



BIOLOGY

BOOKS - NCERT BIOLOGY (ENGLISH)

BIODIVERSITY AND CONSERVATION

Multiple Choice Questions

1. Which of the following countries has the highest biodiversity?

A. Brazil

B. South Africa

C. Russia

D. India

Answer: A



Watch Video Solution

2. Which of the following is not a cause for loss of biodiversity ?

- A. Destruction of habitat
- B. Invasion by alien species
- C. Keeping animals in zoological parks
- D. Over-exploitation of natural resources

Answer: C



Watch Video Solution

3. Which of the following is not an invasive alien species in the Indian context?

A. Lantana

B. Cynodon

C. Parthenium

D. Eichhornia

Answer: B



Watch Video Solution

4. Where among the following will you find pitcher plant?

A. Rain forest of North-East India

B. Sunderbans

C. Thar desert

D. Western ghats

Answer: A



Watch Video Solution

5. Which one of the following is not a major characteristic feature of biodiversity hot spots

- A. Large number of species
- B. Abundance of endemic species
- C. Mostly located in the tropics
- D. Mostly located in the polar regions

Answer: D



Watch Video Solution

6. Match the animals given in column A with their location in column B.

Column A

Column B

(i) Dodo

A. Africa

(ii) Quagga

B. Russia

(iii) Thylacine

C. Mauritius

(iv) Stellar's sea cow

D. Australia

Choose the correct match from the following.

A. i-a, ii-c, iii-b, iv-d

B. i-d, ii-c, iii-a, iv-b

C. i-c, ii-a, iii-b, iv-d

D. i-c, ii-a, iii-d, iv-b

Answer: D



Watch Video Solution

7. What is common to the following plants:

Nepenthes Psilotum, Rauwolfia and Aconitum

?

A. All are ornamental plants

B. All are phylogenetic link species

C. All are prone to over exploitation

D. All are exclusively present in the Eastern

Himalayas

Answer: C



Watch Video Solution

8. The one-horned rhinoceros is specific to which of the following sanctuary ?

A. Bhitar Kanika

B. Bandipur

C. Kaziranga

D. Corbett park

Answer: C



Watch Video Solution

9. Amongst the animal groups given below, which one has the highest percentage of endangered species?

A. Insects

B. Mammals

C. Amphibians

D. Reptiles

Answer: C



[Watch Video Solution](#)

10. Which one of the following is an endangered plant species of India?

A. *Rauwolfia serpentina*

B. *Santalum album* (sandal wood)

C. *Cycas beddonei*

D. All of the above

Answer: D



[Watch Video Solution](#)

11. What is common to Lantana, Eichhornia and Africa catfish?

A. All are endangered species of India

B. All are key stone species

C. All are mammals found in India

D. All the species are neither threatened nor indigenous species of India.

Answer: D



[Watch Video Solution](#)

12. The extinction of passenger pigeon was due to



[Watch Video Solution](#)

13. Which of the following statements is correct ?

A. Parthenium is an endemic species of our country.

B. African catfish is not a threat to indigenous catfishes.

C. Steller's sea cow is an extinct animal.

D. Lantana is popularly known as carrot grass.

Answer: C



Watch Video Solution

14. Among the ecosystem mentioned below, where can one find maximum biodiversity?

A. Mangroves

B. Desert

C. Coral reefs

D. Alpine meadows

Answer: C



Watch Video Solution

15. Which of the following forests is known as the 'lungs of the planet earth'?

A. Taiga forest

B. Tundra forest

C. Amazon rain forest

D. Rainforests of North-East India

Answer: C



Watch Video Solution

16. The active chemical drug reserpine is obtained from

A. Datura

B. Rauwolfia

C. Atropa

D. Papaver

Answer: B



Watch Video Solution

17. Which of the following group exhibit more species diversity

A. Gymnosperms

B. Algae

C. Bryophytes

D. Fungi

Answer: D



Watch Video Solution

18. Which of the below mentioned regions exhibit less seasonal variations ?

A. Tropics

B. Temperates

C. Alpines

D. Both (a) and (b)

Answer: A



Watch Video Solution

19. The historic convention on Biological Diversity held in Rio de Janeiro in 1992 is known as

- A. CITES Convention
- B. The Earth Summit
- C. G-16 Summit
- D. MAB Programme

Answer: B



Watch Video Solution

20. What is common to the techniques (i) in vitro fertilisation, (ii) Cryopreservation and (iii) tissue culture?

A. All are in situ conservation methods.

B. All are ex situ conservation methods.

C. All require ultra modern equipment and large space.

D. All are methods of conservation of extinct organisms.

Answer: B



[Watch Video Solution](#)

Very Short Answer Type Questions

1. What characteristics make a community stable ?



[Watch Video Solution](#)

2. What could have triggered mass extinctions of species in the past ?



[Watch Video Solution](#)

3. What accounts for the greater ecological diversity of India ?



[Watch Video Solution](#)

4. According to David Tilman, greater the diversity, greater is the primary productivity. Can you think of a very low diversity man-made ecosystem that has high productivity ?



 [Watch Video Solution](#)

5. What does 'Red' indicate in the IUCN Red list (2004) ?



[Watch Video Solution](#)

6. Explain as to how protection of biodiversity hot spots alone can reduce up to 30% of the current rate of species extinction.



[Watch Video Solution](#)

7. What is the difference between endemic and exotic species ?



Watch Video Solution

8. How does species diversity differ from ecological diversity ?



Watch Video Solution

9. Why is genetic variation important in the plant *Rauwolfia vomitoria* ?



Watch Video Solution

10. What is Red Data Book ?



Watch Video Solution

11. Define gene pool.



Watch Video Solution

12. What does the term 'Frugivorous' mean ?



Watch Video Solution

13. What is the expanded form of IUCN ?



Watch Video Solution

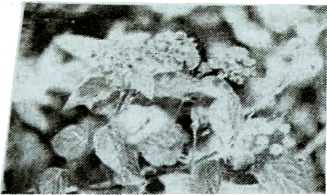
14. Define the terms (i) Bioprospecting (ii)

Endemism



[Watch Video Solution](#)

15. What is common to the species shown in figures A and B ?



A



B



[Watch Video Solution](#)

16. What is common to the species shown in figures A and B ?



A



B



Watch Video Solution

Short Answer Type Questions

1. How is the presently occurring species extinction different from the earlier mass extinctions ?



Watch Video Solution

2. Of the four major causes for the loss of biodiversity (Alien species invasion habitat loss and fragmentation, over-exploitation and co-extinctions) Which according to you is the major cause for the loss of biodiversity ? Give reasons in support.



[Watch Video Solution](#)

3. Discuss one example, based on your day-to-day observations, showing how loss of one

species may lead to the extinction of another.



Watch Video Solution

4. A species area curve is drawn by plotting the number of species against the area. How is it that when a very large area is considered the slope is steeper than that for smaller areas ?



Watch Video Solution

5. Is it possible that productivity and diversity of a natural community remain constant over a time period of, say one hundred years ?



[Watch Video Solution](#)

6. There is greater biodiversity in tropical/subtropical regions than in temperate region. Explain.



[Watch Video Solution](#)

7. Why are the conventional methods not suitable for the assessment of biodiversity of bacteria ?



Watch Video Solution

8. What criteria should one use in categorising a species as threatened ?



Watch Video Solution

9. What could be the possible explanation for greater vulnerability of amphibians to extinctions as compared to other animal groups ?



Watch Video Solution

10. How do scientists extrapolate the total number of species on earth ?



Watch Video Solution

11. Humans benefit from diversity of life. Give two examples.



Watch Video Solution

12. List any two major causes other than anthropogenic causes of the loss of biodiversity.



Watch Video Solution

13. What is an endangered species ? Give an example of an endangered plant and animal species each ?



Watch Video Solution

14. What are sacred groves and their role in biodiversity conservation ?



Watch Video Solution

15. Suggest a place where one can go to study coral reefs, mangrove vegetation and estuaries.



Watch Video Solution

16. Is it true that there is more solar energy available in the tropics ? Explain briefly.



Watch Video Solution

17. What is co-extinction ? Explain with a suitable example ?



[Watch Video Solution](#)

Long Answer Type Questions

1. Elaborate how invasion by an alien species reduces the species diversity of an area.



[Watch Video Solution](#)

2. How can you, as an individual, prevent the loss of biodiversity ?



Watch Video Solution

3. Can you think of a scientific explanation, besides analogy used by Paul Ehrlich, for the direct relationship between diversity and stability of an ecosystem ?



Watch Video Solution

4. Though the conflict between humans and wildlife started with the evolution of man, the intensity of conflict has increased due to the activities of modern man. Justify your answer with suitable examples.



Watch Video Solution

5. What is an ecosystem service ? List any four important ecosystem services provided by the natural ecosystems. Are you in favour or

against levying a charge on the service provided by the ecosystem ?



Watch Video Solution

6. Describe the consumptive use value of biodiversity as food, drugs and medicines, fuel and fibre with suitable examples.



Watch Video Solution

7. Species diversity decreases as we move away from the equator towards the poles. What could be the possible reasons ?



[Watch Video Solution](#)

8. Explain briefly the 'rivet popper hypothesis' of Paul Ehrlich.



[Watch Video Solution](#)

9. The relation between species richness and area for a wide variety of taxa turns out to be a rectangular hyperbola. Give a brief explanation.



Watch Video Solution