



BIOLOGY

BOOKS - NCERT BIOLOGY (ENGLISH)

ENVIRONMENTAL ISSUES

Multiple Choice Questions Mcqs

1. Non-biodegradable pollutants are created by

A. nature

B. excessive use of resource

C. humans

D. natural disasters

Answer:



Watch Video Solution

2. According to the Central Pollution Control Board, particles that are responsible for causing great harm to human health are of diameter

A. 2.50 micrometers

B. 5.00 micrometers

C. 10.00 micrometers

D. 7.5 micrometers

Answer:



Watch Video Solution

3. The material generally used for sound proffing of rooms like a recording studio and auditorium, etc. is

A. cotton

B. coir

C. wood

D. styrofoam

Answer:



Watch Video Solution

4. Compressed Natural Gas (CNG) is

A. propane

B. methane

C. ethane

D. butane

Answer:



Watch Video Solution

5. World's most problematic aquatic weed is

A. Azolla

B. Wolffia

C. Eichhornia

D. Trapa

Answer:



Watch Video Solution

6. Which of the following causes biomagnification ?

A. SO_2

B. Mercury

C. DDT

D. Both (b) and (c)

Answer:



[Watch Video Solution](#)

7. The expanded form of DDT is

- A. dichloro dipheyl trichloroethane
- B. dichloro diethy trichloroethane
- C. dichloro dipyrydyl trichloroethane
- D. dichloro diphenyl tetrachloroacetate

Answer:

 [Watch Video Solution](#)

8. Which of the following materials takes the longest time for biodegradation ?

A. Cotton

B. Paper

C. Bone

D. Jute

Answer:



Watch Video Solution

9. Choose the incorrect statement.

A. The Montreal protocol is associated with the control of emission of ozone depleting substances

B. Methane and carbon dioxide are green house gases

C. Dobson units are used to measure oxygen content

D. Use of incinerators is crucial to disposal of hospital wastes

Answer:



Watch Video Solution

10. Among the following which one causes more indoor chemical pollution ?

- A. Burning coal
- B. Burning cooking gas
- C. Burning mosquito coil
- D. Room spray

Answer:



Watch Video Solution

11. The green scum seen in the freshwater bodies is

A. blue green algae

B. red algea

C. green algae

D. Both (b) and (c)

Answer:



Watch Video Solution

12. The loudness of a sound that a person can withstand without discomfort is about

A. 150 dB

B. 215 dB

C. 30 dB

D. 80 dB

Answer:



Watch Video Solution

13. The major source of noise pollution, world wide is due to:

A. office equipment

B. transport system

C. sugar, textile and paper industries

D. oil refineries and thermal power plants

Answer:



Watch Video Solution

14. Match correctly the following and choose the correct option.

Environment Protection Act	A, 1974
Air prevention and control of Pollution Act	B. 1987
Water Act	C. 1986
Amendment of Air Act to include noise	D. 1981

The correct match is

A. $A \ B \ C \ D$
3 4 1 2

B. $A \ B \ C \ D$
1 3 2 1

C. $A \ B \ C \ D$
4 1 2 3

D.

Answer: $A \ B \ C \ D$
3 4 2 1



[Watch Video Solution](#)

15. Catalytic converters are fitted into automobiles to reduce emission of harmful gases. Catalytic convertes change unburnt hydrocarbons into

A. carbon dioxide and water

B. carbon mono oxide

C. methane

D. carbon dioxide and methane

Answer:



Watch Video Solution

16. Why is it necessary to remove sulphur from petroleum products ?

- A. To reduce the emission of sulphur dioxide in exhaust fumes
- B. To increase efficiency of automobiles engines
- C. To use sulphur removed from petroleum for commercial purposes
- D. To increase the life span of engine silencers

Answer:



Watch Video Solution

17. Which one of the following impurities is easiest to remove from wastewater ?

A. Bacteria

B. Colloids

C. Dissolved solids

D. Suspended solids

Answer:



Watch Video Solution

18. Which one of the following diseases is not due to contamination of water ?

A. Hepatitis -B

B. Jaundice

C. Cholera

D. Typhoid

Answer:



Watch Video Solution

19. Nuisance growth of aquatic plants and bloom-forming algae in natural waters is generally due to high concentrations of

A. carbon

B. sulphur

C. calcium

D. phosphorus

Answer:



Watch Video Solution

20. Algal blooms impart a distinct colour to water due to

A. their pigments

B. excretion of coloured substances

C. formation of coloured chemicals in water

facilitated by physiological degradation of algae

D. absorption of light by algal cell wall

Answer:



Watch Video Solution

21. Match the items in column I and column II and choose the correct option.

Column I

UV

Biodegradable organic matter

DDT

Phosphates

Column II

(i) Biomagnification

(ii) Eutrophication

(iii) Snow blindness

(iv) BOD

The correct match is :

A.

<i>A</i>	<i>B</i>	<i>C</i>	<i>D</i>
2	1	4	3

B.

<i>A</i>	<i>B</i>	<i>C</i>	<i>D</i>
3	2	4	1

C.

<i>A</i>	<i>B</i>	<i>C</i>	<i>D</i>
3	4	1	2

D.

<i>A</i>	<i>B</i>	<i>C</i>	<i>D</i>
3	1	4	2

Answer:



Watch Video Solution

22. In the textbook you came across Three Mile Island and Chernobyl disasters associated with accidental leakage of radioactive wastes. In India we had Bhopal gas tragedy. It is associated with which of the following ?

A. CO_2

B. Methyl isocyanate

C. CFC's

D. Methyl cyanate

Answer:



Watch Video Solution

Very Short Answer Type Questions

1. Use of lead- free petrol or diesel is recommended to reduce the pollutant emitted by automobiles.

What role does lead play?



Watch Video Solution

2. In which year was the Air (Prevention and Control of pollution) Act amended to include noise as air pollution.



[Watch Video Solution](#)

3. Name the city in our country where the entire public road transport runs on CNG.



[Watch Video Solution](#)

4. It is a common practice to undertake of the overhead water tanks. Whate is the possible source

of silt that gets deposited in the water tanks?



Watch Video Solution

5. What is cultural eutrophication?



Watch Video Solution

6. List any two adverse effects of particulate matter on human health.



Watch Video Solution

7. What is the raw material for polyblend?



[Watch Video Solution](#)

8. Blends of polyblend and bitumen, when used, help to increase road life by a factor of three . What is the reason?



[Watch Video Solution](#)

9. Mention any two example of plants used as wind breakers in the agricultural fields.



[Watch Video Solution](#)

 [Watch Video Solution](#)

10. Name an industry which can cause both air and thermal pollution and as well as eutrophication.

 [Watch Video Solution](#)

11. What is an algal bloom ?

 [Watch Video Solution](#)

12. What do you understand by biomagnification?

 [Watch Video Solution](#)

[Watch Video Solution](#)

13. What are the three major kinds or impurities in domestic wastewater?



[Watch Video Solution](#)

14. What is reforestation?



[Watch Video Solution](#)

15. What is the best solution for the treatment of electronic wastes?



[Watch Video Solution](#)

Short Answer Type Questions

1. Is it true that carpets and curtains/ drapes placed on the floor or wall surface can reduce noise level. Explain briefly?



[Watch Video Solution](#)

2. What is hybrid vehicle technology? Explain its advantages with a suitable example?



[Watch Video Solution](#)



[Watch Video Solution](#)

3. Is it true that if the dissolved oxygen level drops to zero, the water will become septic. Given an example which could lower the dissolved oxygen content of an aquatic body.



[Watch Video Solution](#)

4. Name any one green house gas and its possible source of production on a large scale . What are the harmful effects of it ?



[Watch Video Solution](#)

5. It is a common practice to plant trees and shrubs near the boundary walls of buildings. What purpose do they serve?



[Watch Video Solution](#)

6. Why has the National Forest Commission of India recommended a relatively larger forest cover for hills than for plains?



[Watch Video Solution](#)

7. How can slash and burn agriculture become environment friendly?



[Watch Video Solution](#)

8. What is the main idea behind " Joint Forest Management Concept" introduced by the Government of India?



[Watch Video Solution](#)

9. What do you understand by Snow- blindness ?

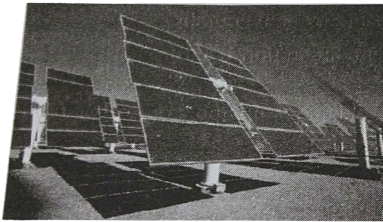


[Watch Video Solution](#)

10. How has DDT caused decline in bird population ?

 [Watch Video Solution](#)

11. Observe the figure A and B given below and answer the following questions



A



B

(i) The power generation by the above two methods is non-polluting, True/False.

(ii) List any two applications of solar energy

(iii) What is a photovoltaic cell?



[Watch Video Solution](#)

Long Answer Type Questions

1. Write a short note on electronic waste. List the various sources of e-wastes and the problems associated with its disposal.



[Watch Video Solution](#)

2. What is organic farming ? Discuss the benefits of organic farming as a viable practise in the context of developing nations like India.



Watch Video Solution

3. Water logging and soil salinity are of the problems that have come in the wake of the Green Revolution. Discuss their causes and adverse effects to the environment.



Watch Video Solution

4. What are multipurpose trees ? Give the botanical and names of any two multipurpose trees known to you and list their uses.



[Watch Video Solution](#)

5. What are the basic characteristics of a modern landfill site. List any three and also mention the reasons for their use.



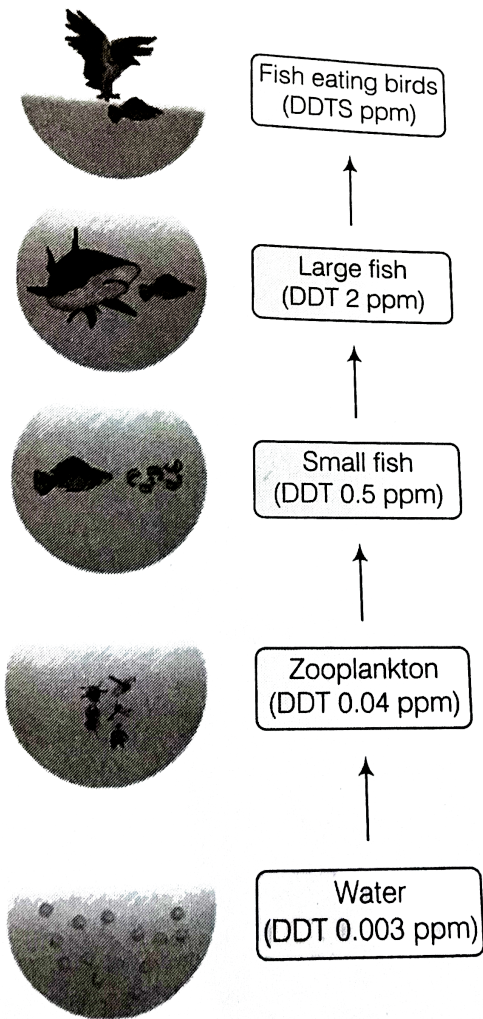
[Watch Video Solution](#)

6. How does an electrostatic precipitator work ?



Watch Video Solution

7. Observe figure and answer the following questions.



- (i) The ecological term used to describe the DDT accumulation at different trophic levels ?
- (ii) List any one effect of DDT accumulation on birds.
- (iii) Will DDT accumulation lead to eutrophication ?

(iv) Does it affect the BOD?

(v) Name disease caused by accumulation of any heavy metal.



Watch Video Solution