



BIOLOGY

BOOKS - NCERT BIOLOGY (ENGLISH)

HUMAN HEALTH AND DISEASES

Very Short Answer Type Questions

1. Certain pathogens are tissue/organ Specific.
Justify the statement with suitable example.



Watch Video Solution

2. The immune system of a person is suppressed. In the ELISA test, it was found positive to a pathogen.

(a) Name the diseases the patient is suffering from.

(b) What are the causative organisms?

(c) Which cells of the body are affected by the pathogen?




[Watch Video Solution](#)

3. Where are B-cells and T-cells formed? How do they differ from each other?



Watch Video Solution

4. Given below are the pairs of pathogens and the diseases caused by them. Which out of these is not a matching pair and why? 



View Text Solution

5. What would happen to immune system, if thymus gland is removed from the body of a person?



[Watch Video Solution](#)

6. Many microbial pathogens enter the gut of humans along with food. What are the preventive barriers to protect the body from such pathogens? What type of immunity do you observe in this case?





[Watch Video Solution](#)

7. Why is mother's milk considered the most appropriate food for a new born infant ?



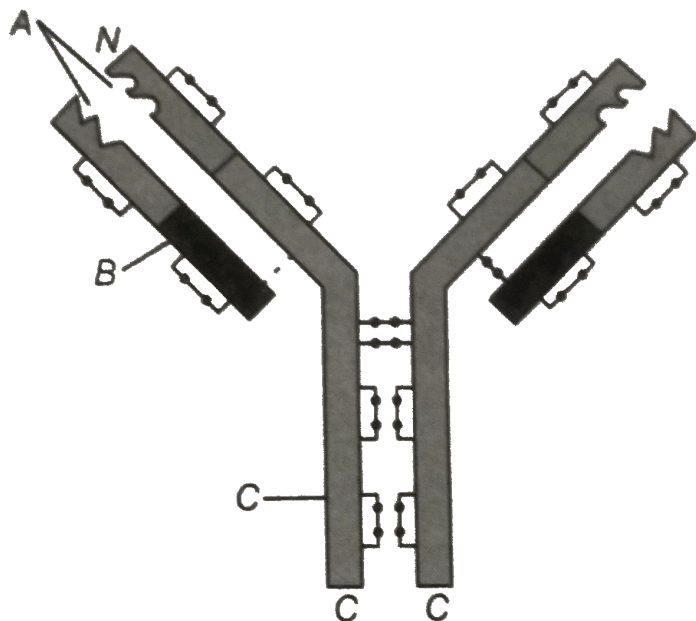
[Watch Video Solution](#)

8. What are interferons? How do interferons check infection of new cells?



[Watch Video Solution](#)

9. In the figure, structure of an antibody molecule is shown. Name the parts A, B and C.



[Watch Video Solution](#)

10. If a regular dose of drug or alcohol is not provided to an addicted person, he shows some withdrawal symptoms. List any four such withdrawal symptoms.



Watch Video Solution

11. Why is it that during changing weather, one is advised to avoid closed, crowded and air conditioned places like cinema halls etc?



Watch Video Solution

12. It is said, that the harmful alleles get eliminated from population over a period of time, yet sickle-cell anaemia is persisting in human population. Why?



Watch Video Solution

13. Lymph nodes are secondary lymphoid organs. Explain the role of lymph nodes in our immune response.



Watch Video Solution

14. Why is an antibody molecule represented as H_2L_2 ?



[Watch Video Solution](#)

15. What does the term 'memory' of the immune system mean?



[Watch Video Solution](#)

16. If a patient is advised anti retroviral therapy, which infection is he suffering from?

Name the causative organism.



Watch Video Solution

Short Answer Type Questions

1. Differentiate between active immunity and passive immunity.



Watch Video Solution

2. Differentiate between benign tumour and malignant tumour.



Watch Video Solution

3. Do you consider passive smoking is more dangerous than active smoking ?



Watch Video Solution

4. Prevention is better than cure'. Comment.



[Watch Video Solution](#)

5. Explain any three preventive measures to control microbial infections.

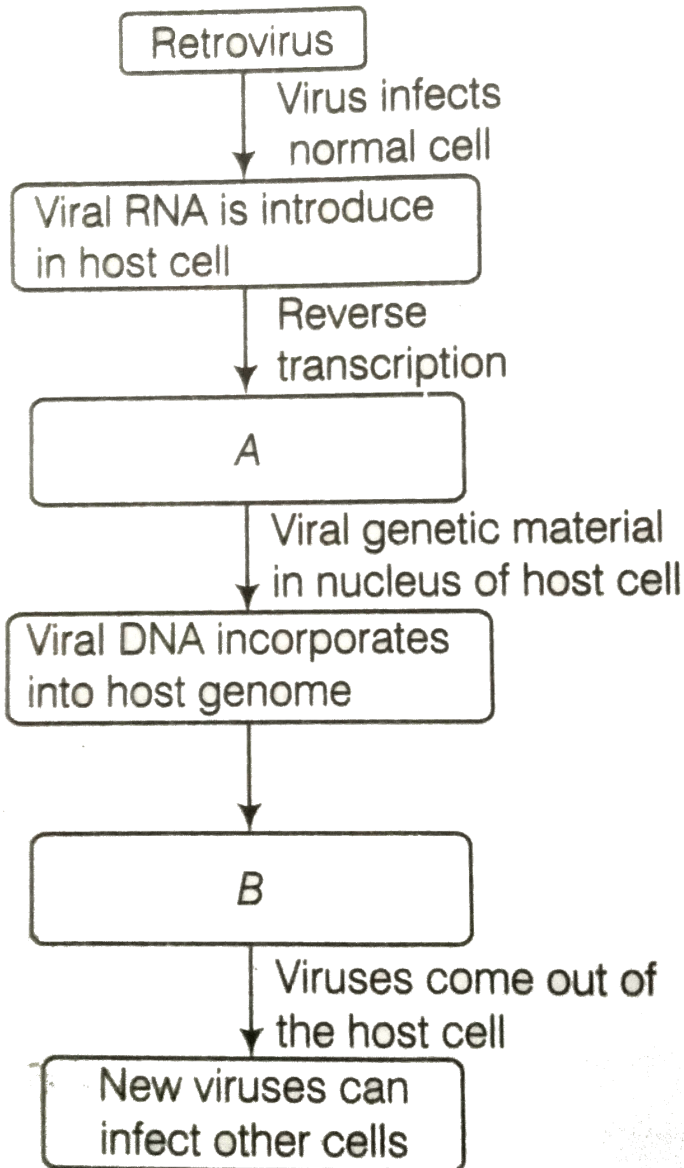


[Watch Video Solution](#)

6. In the given flow diagram, the replication of retro virus in a host is shown. Observe and

answer the following questions.

(a) Fill in (A) and (B)





[Watch Video Solution](#)

7. Maintenance of personal and public hygiene is necessary for prevention and control of many infectious diseases. Justify the statement giving suitable examples.



[Watch Video Solution](#)

8. The following table shows certain diseases, their causative organisms and symptoms. Fill

the gaps.

Diseases	Causative organisms	Symptoms
Ascariasis	<i>Ascaris</i>	---
---	<i>Trichophyton</i>	Appearance of dry, scaly lesions on various parts of the body
Typhoid	---	High fever, weakness, headache, stomach pain and constipation
Pneumonia	<i>Streptococcus pneumoniae</i>	---
---	<i>Rhino viruses</i>	Nasal congestion and discharge, sore throat, cough, headache
Filariasis	---	Inflammation in lower limbs



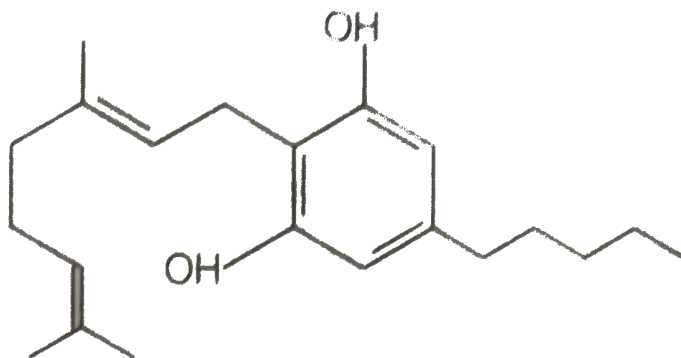
Watch Video Solution

9. The outline structure of a drug is given below.

(a) Which group of drugs does this represent ?

(b) What are the modes of consumption of these drugs?

(c) Name the organ of the body which is affected by consumption of these drugs.



[Watch Video Solution](#)

10. Give the full form of CT and MRI. How are they different from each other? Where are they used?





[Watch Video Solution](#)

11. Many secondary metabolites of plants have medicinal properties. It is their misuse that creates problems. Justify the statement with an example.



[Watch Video Solution](#)

12. Why cannabinoids are banned in sports and games ?



[Watch Video Solution](#)

13. What is secondary metabolism ?



Watch Video Solution

14. Drugs and alcohol give short-term 'high' and long-term 'damages'.



Watch Video Solution

15. Diseases like dysentery, cholera, typhoid, etc., are more common in over crowded human settlements . Why ?



Watch Video Solution

16. From which plant cannabinoids are obtained? Name any two cannabinoids. Which part of the body is effected by consuming these substances ?



Watch Video Solution

17. In the metropolitan cities of India , many children are suffering from allergy/asthma. What are the main causes to this problem. Give some symptoms of allergic reactions.



Watch Video Solution

18. What is the basic principle of vaccination ?
How do vaccines prevent microbial infections?
Name the organism from which hepatitis-B vaccine is produced.



[Watch Video Solution](#)

19. What is cancer? How is a cancer cell different from the normal cell ? How do normal cells attain cancerous nature?



[Watch Video Solution](#)

20. A person shows strong unusual hypersensitive reactions when exposed to certain substances present in the air. Identify

the condition. Name the cells responsible for such reactions. What precaution should be taken to avoid such reactions.



Watch Video Solution

21. For an organ transplant, it is an advantage to have an identical twin.



Watch Video Solution

22. What are lifestyle diseases ? How are they caused ? Name any two such diseases.



Watch Video Solution

23. If there are two pathogenic viruses, one with DNA and other with RNA, which would mutate faster? And why?



Watch Video Solution

1. Represent schematically the life cycle of a malarial parasite.



[Watch Video Solution](#)

2. Compare the life style of people living in the urban areas with those of rural areas and briefly describe how the life style affects their health.



[Watch Video Solution](#)

3. In your view what motivates youngsters to take to alcohol or drugs and how can this be avoided?



[Watch Video Solution](#)

4. In your locality, if a person is addicted to alcohol, what kind of behavioural changes do you observe in that person? Suggest measures to overcome the problem.



[Watch Video Solution](#)

5. What are the methods of cancer detection?

Describe the common approaches for treatment of cancer.



Watch Video Solution

6. Drugs like LSD, barbiturates, amphetamines, etc., are used as medicines to help patients with mental illness. However, excessive doses and abusive usage are harmful. Enumerate the

major adverse effects of such drugs in humans.



Watch Video Solution

7. What is pulse polio programme of Government of India? What is OPV?

Why is it that India is yet to eradicate polio?



Watch Video Solution

8. What are recombinant DNA vaccines? Give two examples of such vaccines. Discuss their advantages.



Watch Video Solution

Others

1. The term 'Health' is defined in many ways. The most accurate definition of the health would be

A. health is the state of body and mind in a balanced condition

B. health is the reflection of a smiling face

C. health is a state of complete physical, mental and social well-being

D. health is the symbol of economic prosperity .

Answer: C



Watch Video Solution

2. The organisms which cause diseases in plants and animals are called

A. pathogens

B. vectors

C. insects

D. worms

Answer: A



Watch Video Solution

3. The chemical test that is used for diagnosis of typhoid is

A. ELISA test

B. ESR test

C. PCR test

D. Widal test

Answer: D



Watch Video Solution

4. Diseases are broadly grouped into infectious and non-infectious diseases. In the list given below, identify the infectious diseases.

(i) Cancer , (ii) Influenza

(iii) Allergy, (iv) Small pox

A. I and II

B. II and III

C. III and IV

D. II and IV

Answer: D



Watch Video Solution

5. The sporozoites that cause infection, when a female *Anopheles* mosquito bites a person, are formed in

- A. liver of human
- B. RBCs of mosquito
- C. salivary glands of mosquito
- D. intestine of human

Answer: C



Watch Video Solution

6. The disease chikungunya is transmitted by

A. house flies

B. Aedes mosquitoes

C. cockroach

D. female Anopheles

Answer: B



Watch Video Solution

7. Many diseases can be diagnosed by observing the symptoms in the patient. Which group of symptoms are indicative of pneumonia ?

A. Difficulty in respiration , fever, chills ,
cough and headache

B. Constipation , abdominal pain, cramps
and blood clots

C. Nasal congestion and discharge, cough,
sore throat and headache

D. High fever, weakness, stomach pain, loss
of appetite and constipation .

Answer: A



Watch Video Solution

8. The genes causing cancer are

A. structural genes

B. expressor genes

C. oncogenes

D. regulatory genes

Answer: C



Watch Video Solution

9. In malignant tumors, the cells proliferate, grow rapidly and move to other parts of the body to form new tumors. This stage of disease is called.

A. metagenesis

B. metastasis

C. teratogenesis

D. mitosis

Answer: B



Watch Video Solution

10. When an apparently healthy person is diagnosed as unhealthy by a psychiatrist, the reason could be that

- A. the patient was not efficient at his work
- B. the patient was not economically prosperous
- C. the patient shows behavioural and social maladjustment
- D. he does not take interest in sports

Answer: C



Watch Video Solution

11. Which of the following are the reason (s) for Rheumatoid arthritis ? Choose the correct option.

(i) The ability to differentiate pathogens or foreign molecules from self cells increases.

(ii) Body attacks self cells.

(iii) More antibodies are produced in the body.

(iv) The ability to differentiate pathogens or foreign molecules from self cells is lost.

A. I and II

B. II and IV

C. III and IV

D. I and III

Answer: B



Watch Video Solution

12. AIDS is caused by HIV. Among the following, which one is not a mode of transmission of HIV ?

A. Transfusion of contaminated blood

B. Sharing the infected needles

C. Shaking hands with infected persons

D. Sexual contact with infected persons

Answer: C



Watch Video Solution

13. Smack' is a drug obtained from the

A. latex of *Papaver somniferum*

B. leaves of *Cannabis sativa*

C. flowers of *Datura pinata*

D. fruits of *Erythroxyl coca*

Answer: A



Watch Video Solution

14. The substance produced by a cell in viral infection that can protect other cells from further infection is

A. serotonin

B. colostrum

C. interferon

D. histamine

Answer: C



Watch Video Solution

15. Transplantation of tissues/organs to save certain patients often fails due to rejection of such tissues/organs by the patient. Which

type of immune response is responsible for such rejections?

- A. Auto-immune response
- B. Humoral immune response
- C. Physiological immune response
- D. Cell-mediated immune response

Answer: D



Watch Video Solution

16. Antibodies present in colostrum which protect the new born from certain diseases is of

A. IgG type

B. IgA type

C. IgD type

D. IgE type

Answer: B



Watch Video Solution

17. Tobacco consumption is known to stimulate secretion of adrenaline and nor-adrenaline. The component causing this could be

A. nicotine

B. tannic acid

C. curaimin

D. catechine

Answer: A



Watch Video Solution

18. Antivenom against snake poison contains

A. antigens

B. antigen-antibody complexes

C. antibodies

D. enzymes

Answer: C



Watch Video Solution

19. Which of the following is not a lymphoid tissue ?

A. Spleen

B. Tonsils

C. Appendix

D. Thymus

Answer: C



Watch Video Solution

20. Which of the following glands is large sized at birth but reduces in size with ageing ?

A. Pineal

B. Pituitary

C. Thymus

D. Thyroid

Answer: C



Watch Video Solution

21. Haemozoin is a

- A. precursor of haemoglobin
- B. toxin from Streptococcus
- C. toxin from Plasmodium species
- D. toxin from Haemophilus species

Answer: C



Watch Video Solution

22. One of the following is not the causal organism for ringworm.

A. Microsporum

B. Trichophyton

C. Epidermophyton

D. Macrosporum

Answer: D



Watch Video Solution

23. A person with sickle cell anaemia is

A. more prone to malaria

B. more prone to typhoid

C. less prone to malaria

D. less prone to typhoid

Answer: C



Watch Video Solution