



BIOLOGY

BOOKS - NCERT BIOLOGY (ENGLISH)

HUMAN REPRODUCTION

Multiple Choice Questions Mcqs

1. Choose the incorrect statement from the following

- A. in birds and mammals internal fertilisation takes place
- B. colostrum contains antibodies and nutrients
- C. polyspermy is prevented by the chemical change in the egg surface
- D. in the human female implantation occurs almost seven days after fertilisation

Answer: C



Watch Video Solution

2. Identify the wrong statements from the following:

- A. High levels of estrogen triggers the ovulatory surge.
- B. Oogonial cells start to proliferate and give rise to functional ova in regular cycles from puberty onwards.
- C. Sperms released from seminiferous tubules are poorly motile / non-motile.
- D. Progesterone level is high during the post ovulatory phase of menstrual cycle.

Answer: B



Watch Video Solution

3. Spot the odd one out from the following structures with reference to the male reproductive system.

A. Rete testis

B. Epididymis

C. Vasa efferentia

D. Isthmus

Answer: D



Watch Video Solution

4. Seminal plasma, the fluid part of semen, is contributed by

(i) seminal vesicle (ii) prostate

(iii) urethra (iv) bulbourethral gland

A. I and II

B. I, II and IV

C. II, III and IV

D. I and IV

Answer: B



Watch Video Solution

5. Spermiation is the process of the release of sperms from

A. seminiferous tubules

B. vas deferens

C. epididymis

D. prostate gland

Answer: A



Watch Video Solution

6. Mature Graffian follicle is generally present in the ovary of a healthy human female around.

- A. 5-8 day of menstrual cycle
- B. 11-17 day of menstrual cycle
- C. 18-23 day of menstrual cycle
- D. 24-28 day of menstrual cycle

Answer: B



[Watch Video Solution](#)

7. Acrosomal reaction of the sperm occurs due to

- A. its contact with zona pellucida of the ova
- B. reactions within the uterine environment of the female
- C. reactions within the epididymal environment of the male
- D. androgens produced in the uterus

Answer: C



Watch Video Solution

8. Which one of the following is not a male accessory gland?

A. Seminal vesicle

B. Ampulla

C. Prostate

D. Bulbourethral gland

Answer: B



Watch Video Solution

9. The immature male germ cells undergo division to produce sperms by the process of spermatogenesis. Choose the correct one with reference to above.

- A. Spermatogonia have 46 chromosomes and always undergo meiotic cell division
- B. Primary spermatocytes divide by mitotic cell division
- C. Secondary spermatocytes have 23 chromosomes and undergo second meiotic division
- D. Spermatozoa are transformed into spermatids

Answer: B



Watch Video Solution

10. Match between the following representing parts of the sperm and their functions

Column I

Column II

- | | |
|-----------------|-----------------------|
| a. Head | (i) Enzymes |
| b. Middle piece | (ii) Sperm motility |
| c. Acrosome | (iii) Energy |
| d. tail | (iv) Genetic material |

A. $\begin{matrix} A & B & C & D \\ 2 & 4 & 1 & 3 \end{matrix}$

- B. $A \ B \ C \ D$
4 3 1 2
- C. $A \ B \ C \ D$
4 1 2 3
- D. $A \ B \ C \ D$
2 1 3 4

Answer: B



[Watch Video Solution](#)

11. Which among the following has 23 chromosomes?

- A. Spermatogonia
- B. Zygote
- C. Secondary oocyte
- D. oogonia

Answer: C



[Watch Video Solution](#)

12. Match the following.

Column I

- A. Trophoblast
- B. Cleavage
- C. Inner cell mass
- D. Implantation

Column II

- 1. Embedding of blastocyst in the endometrium
- 2. Group of cells that would differentiate as embryo
- 3. Outer layer of blastocyst attached to the endometrium
- 4. Mitotic division of zygote

A.

<i>A</i>	<i>B</i>	<i>C</i>	<i>D</i>
2	1	3	4

B.

<i>A</i>	<i>B</i>	<i>C</i>	<i>D</i>
3	4	2	1

C.

<i>A</i>	<i>B</i>	<i>C</i>	<i>D</i>
3	1	2	4

D.

<i>A</i>	<i>B</i>	<i>C</i>	<i>D</i>
2	4	3	1

Answer: B



[View Text Solution](#)

13. Which of the following hormones is not secreted by human placenta?

A. hCG

B. Estrogens

C. Progesterone

D. LH

Answer: D



[Watch Video Solution](#)

14. The vas deferens receives duct from the seminal vesicle and opens into urethra as

A. epididymis

B. ejaculatory duct

C. efferent ductule

D. ureter

Answer: B



[Watch Video Solution](#)

15. Urethral meatus refers to the:

- A. urinogenital duct
- B. opening of vas deferens into urethra
- C. external opening of the urinogenital duct
- D. muscles surrounding the urinogenital duct

Answer: C



Watch Video Solution

16. Morula is a development stage:

- A. between the zygote and blastocyst
- B. between the blastocyst and gastrula
- C. after the impantation
- D. between implantation and parturition

Answer: A



Watch Video Solution

17. The membraneous cover of the ovum at ovulation is:

- A. corona radiata
- B. zona radiata
- C. zona pellucida
- D. chorion

Answer: A



Watch Video Solution

18. Identify the odd one from the following

- A. labia minora

B. fimbriae

C. infundibulum

D. Isthmus

Answer: A



[Watch Video Solution](#)

Very Short Answer Type Questions

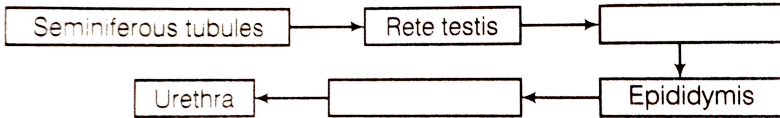
1. Given below are events in human reproduction. Write them in correct sequential order.

Insemination, gemetogenesis, fertilisation, parturition, gestation, implanaton.



[Watch Video Solution](#)

2. The path of sperm transport is given below. Provide the missing steps in blank boxes.



 [Watch Video Solution](#)

3. What is the role of cervix in the human female reproductive system?

 [Watch Video Solution](#)

4. Why are menstrual cycles absent during pregnancy?

 [Watch Video Solution](#)

5. Female reproductive organs and associated functions are given below in column I and II. Fill the blank blanks.

Column I	Column II
Ovaries	Ovulation
Oviduct	<i>A</i>
<i>B</i>	Pregnancy
Vagina	<i>Birth</i>



[Watch Video Solution](#)

6. From where the parturition signals arises-mother or foetus? Mention the main hormone involved in parturition.



[Watch Video Solution](#)

7. What is the significance of epididymis in male fertility?

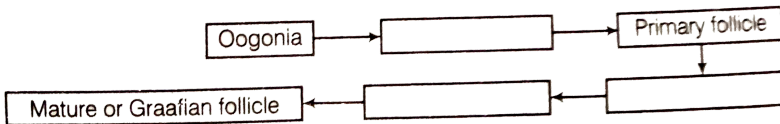


[Watch Video Solution](#)

8. Given the names and functions of the hormones involved in the process of spermatogenesis. Write the names of the endocrine glands from where they are released.

[▶ Watch Video Solution](#)

9. The mother germ cells are transformed into a mature follicle through series of steps. Provide the missing steps in the blank boxes.



[▶ Watch Video Solution](#)

10. During reproduction the chromosome number ($2n$) reduces to half (n) in the gametes and again the original number ($2n$) is restored in the offspring. What are the processes through which these events take place?

[▶ Watch Video Solution](#)

11. What is the difference between a primary oocyte and a secondary oocyte?

[▶ Watch Video Solution](#)

12. What is the significance of ampullary-isthmic junction in the female reproductive tract?

 [Watch Video Solution](#)

13. How does zona pellucida of ovum help in preventing polyspermy?

 [Watch Video Solution](#)

14. Mention the importance of LH surge during menstrual cycle.

 [Watch Video Solution](#)

15. Which type of cell division forms spermatids from the secondary spermatocytes?

 [Watch Video Solution](#)

Short Answer Type Questions

1. A human female experiences two major changes menarche and menopause during her life. Mention the significance of both the events.

 [Watch Video Solution](#)

2. (a) How many spermatozoa are formed from one secondary spermatocyte?

(b) Where does the first cleavage division of zygote take place?

 [Watch Video Solution](#)

3. Corpus luteum in pregnancy has a long life. However if fertilisation does not take place, it remains active only for 10-12 days. Explain.

 [Watch Video Solution](#)

4. What is foetal ejection reflex? Explain how it leads to parturition?

 [Watch Video Solution](#)

5. Except endocrine function, what are the other functions of placenta.



 [Watch Video Solution](#)

6. Why doctors recommend breast feeding during initial period of infant growth?

 [Watch Video Solution](#)

7. What are the events that take place in the ovary and uterus during follicular phase of the menstrual cycle.

 [Watch Video Solution](#)

8. Given below is a flow chart showing ovarian changes during menstrual cycle. Fill in the spaces giving the name of the hormones responsible for the events shown.  

[View Text Solution](#)

9. Given a schematic labelled diagram to represent oogenesis (without descriptions).

 [Watch Video Solution](#)

10. What are the changes in the oogonia during the transition of a primary follicle to Graafian follicle?

 [Watch Video Solution](#)

1. What role does pituitary gonadotropins play during follicular and ovulatory phases of menstrual cycle? Explain the shifts in steroidal secretions.

 [Watch Video Solution](#)

2. Meiotic division during oogenesis is different from that in spermatogenesis. Explain how and why?

 [Watch Video Solution](#)

3. The zygote passes through several developmental stages till implantation. Describe each briefly with suitable diagrams.

 [Watch Video Solution](#)

4. Draw a neat diagram of the female reproductive system and label the parts associated with the following (a) production of gamete, (b) site of

fertilisation (c) site of implantation and (d) birth canal.



Watch Video Solution

5. With a suitable diagram, describe the organisation of mammary gland.



Watch Video Solution