



MATHS

BOOKS - PRINCETON MATHS (ENGLISH)

GRID-INS

Examples

1. If $a + 2 = 6$ and $b + 3 = 21$, what is the value of $\frac{b}{a}$?



[Watch Video Solution](#)

2. Forty percent of the members of the sixth-grade class wore white socks. Twenty percent wore black socks. If twenty-five percent of the remaining students wore gray socks, what percent of the sixth-grade wore socks that were not white, black or gray? (Disregard the % when gridding your answer.)



[Watch Video Solution](#)

3. Grow-Up potting soil is made from only peat moss and compost in a ratio of 3 pounds of peat moss to 5 pounds of compost. IF a bag of Grow-Up potting soil contains 12 pounds of potting soil, how many pounds of peat moss does it contain?



[Watch Video Solution](#)

4. IF $4 < 3x + 2 < 5$, what is one possible value of x ?



[Watch Video Solution](#)

Grid In Drill 1 No Calculator Section

1. IF $a^b = 4$ and $3b=2$, what is the value of a?



[Watch Video Solution](#)

2. IF $4x + 2y = 24$ and $\frac{7y}{2x} = 7$, what is the value of x?



[Watch Video Solution](#)

3. IF $\frac{x^2 + x - 6}{x^2 - 8x + 12} = 4$, What is the value of x ?



[Watch Video Solution](#)

4. IF $-1 \leq a \leq 2$ and $-3 \leq b \leq 2$, What is the greatest possible value of $(a+b)(b-a)$?



[Watch Video Solution](#)

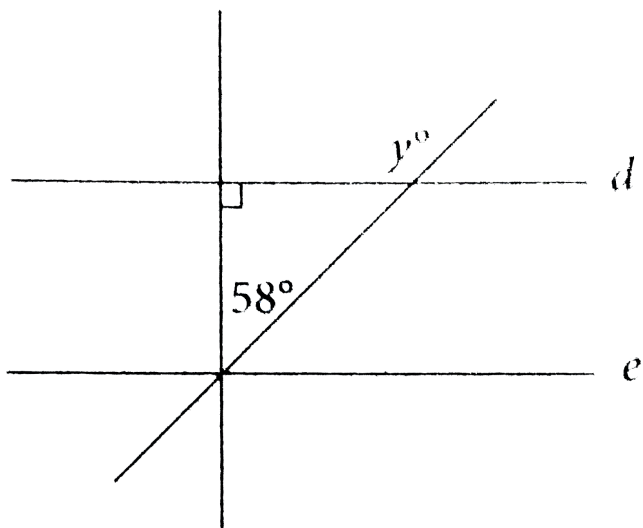
Grid In Drill 2 Calculator Permitted Section

$$1. n = 12 \times 2^{\frac{t}{3}}$$

The number of mice in a certain colony is shown by the formula above, such that n is the number of mice and t is the time, in months, since the start of the colony. IF 2 years have passed since the start of the colony, how many mice does the colony contain now?



[Watch Video Solution](#)



2.

In the figure above, if d is parallel to e , what is the value of y ?

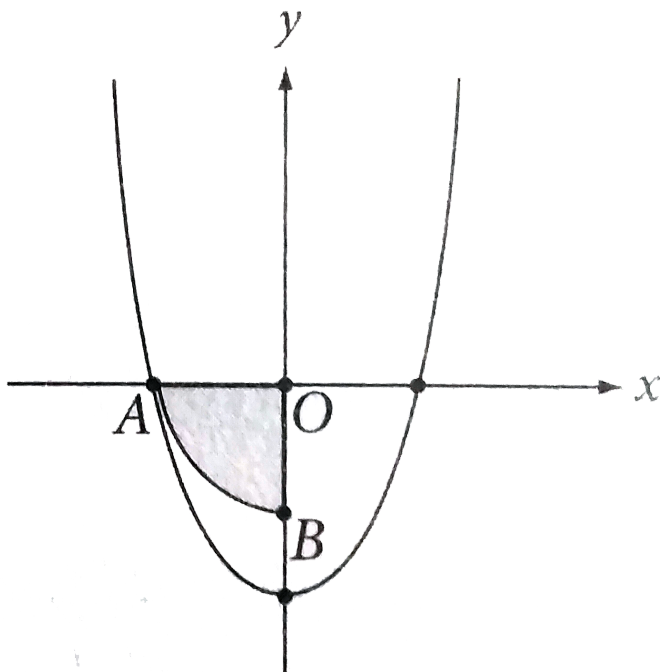


[Watch Video Solution](#)

3. IF Alexandra pays \$56.65 for a table, and this amount includes a tax of 3% on the price of the table, what is the amount, in dollars, that she pays in tax? (Disregard the dollar sign when gridding your answer.)



[Watch Video Solution](#)



4.

In the figure above, AB is the arc of the circle with centre O . Point A lies on the graph of $y = x^2 - b$, where b is a constant. IF the area of shaded region AOB is π , then what is the value of b ?



5. A garden measuring 10 feet by 12 feet, contains individual plots that measure 1 foot by 1 foot...30% of the plots contain bell peppers, 30% contain cherry tomatoes, 25% contain squash, and the remaining 15% contain eggplants. Each bell peppers plot produce 4 cherry tomatoes every 6 days, a squash plot produces 1 squash every 15 days, and an eggplant plot produces 3 eggplants every 10 days.

In a 30-day month , how many vegetables are produced by the 10×12 foot garden?



[Watch Video Solution](#)

6. A garden measuring 10 feet by 12 feet, contains individual plots that measure 1 foot by 1 foot...30% of the plots contain bell peppers, 30% contain cherry tomatoes, 25% contain squash, and the remaining 15% contain eggplants. Each bell peppers plot produce 4 cherry tomatoes every 6 days, a

squash plot produces 1 squash every 15 days, and an eggplant plot produces 3 eggplants every 10 days.

An unusually warm and wet month causes the monthly production of eggplants to double. What is the daily average number of eggplants produced in the garden during a 30-day month at the new rate?



[View Text Solution](#)