



BIOLOGY

BOOKS - SURA BIOLOGY (TAMIL ENGLISH)

Our Environment

Example

1. Identify the fresh water ecosystem.

A. Pond

B. Lake

C. River

D. All of them

Answer:



Watch Video Solution

2. Producers are_____.

A. Animals

B. Birds

C. Plants

D. Snakes

Answer:



Watch Video Solution

3. It is a biodegradable waste

A. Plastic

B. Coconut Shell

C. Glass

D. Aluminium

Answer:



Watch Video Solution

4. It is an undesirable change that occurs in air and water.

A. Recycling

B. Reuse

C. Pollution

D. Reduce

Answer:



Watch Video Solution

5. Usage of chemical pesticides and fertilisers causes ___ pollution.

A. Air pollution

B. Water pollution

C. Noise

D. pollution

Answer:



Watch Video Solution

6. Primary consumers that eat plants are called

_____.



Watch Video Solution

7. Primary consumers that eat plants are called_____.



Watch Video Solution

8. _____ is the process of converting waste material into new material.



Watch Video Solution

9. Water pollution can spread ___ and chemicals.



[Watch Video Solution](#)

10. The 3R's are Reduce, ___ and Recycle.



[Watch Video Solution](#)

11. True or False. If False, give the correct statement: The Pacific ocean is an example of

an aquatic ecosystem.



[Watch Video Solution](#)

12. True or False. If False, give the correct statement: Bacteria and fungi are called decomposers.



[Watch Video Solution](#)

13. True or False. If False, give the correct statement: Human and animal wastes are

examples of non-biodegradable waste.



[Watch Video Solution](#)

14. True or False. If False, give the correct statement: Excessive use of pesticides leads to air pollution.



[Watch Video Solution](#)

15. True or False. If False, give the correct statement: In schools, waste management

rules say that we should separate waste in two categories.



[Watch Video Solution](#)

16. Match the following :

1. Biotic factor	Terrestrial Ecosystem
2. Sewage	Land pollution
3. Fertilizers	Air pollution
4. Desert	Water Pollution
5. Smoke	Animals



[Watch Video Solution](#)

17. Arrange the following in a correct sequence and form a food chain:- Rabbit → Carrot → Eagle → Snake



Watch Video Solution

18. Arrange the following in a correct sequence and form a food chain:- Human-Insect → Algae → Fish



Watch Video Solution

19. Define ecosystem.



Watch Video Solution

20. What are the two types of ecosystems?



Watch Video Solution

21. Write any two things that can be recycled.



Watch Video Solution

22. What are the types of pollution?



[Watch Video Solution](#)

23. Give one example of a food chain in an aquatic ecosystem.



[Watch Video Solution](#)

24. Name some pollutants.



[Watch Video Solution](#)

25. What are the pollutions caused by the objects given below: Loud speaker

A. Loud Speaker

B. Plastic

C.

D.

Answer:



Watch Video Solution

26. What are the pollutions caused by the objects given below: Plastic



Watch Video Solution

27. What is biodegradable waste?



Watch Video Solution

28. How can we reduce water pollution?



Watch Video Solution

29. Write the importance of the food chain.



Watch Video Solution

30. Give two examples of how you can avoid or reduce waste?



Watch Video Solution

31. Write a short note on noise pollution.



[Watch Video Solution](#)

32. What would happen if an organism is removed from the food chain?



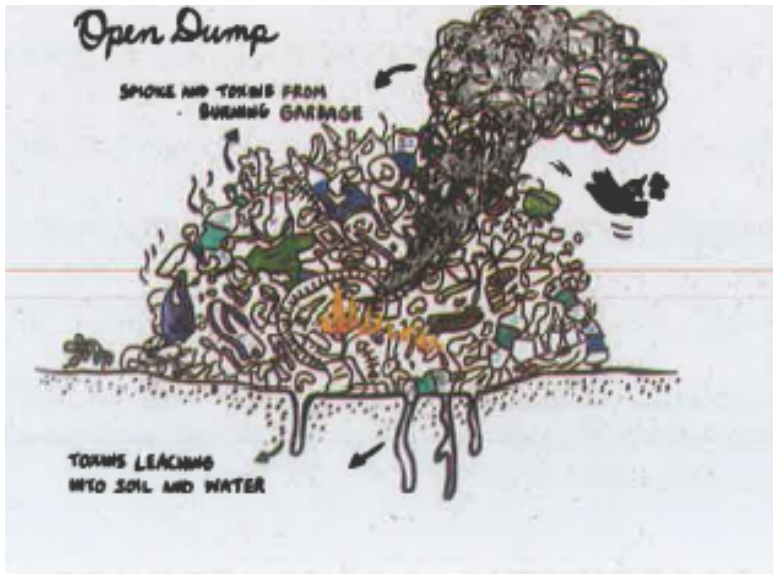
[Watch Video Solution](#)

33. Explain the link between waste and dangerous diseases like dengue and malaria?



[Watch Video Solution](#)

34. See the diagram and answer the following questions: Explain what is happening in the picture?



[Watch Video Solution](#)

35. These are abiotic factors.

(i) sunlight

(ii) Bacteria

(iii) Air

(iv) Plants

A. i and ii

B. i and iii

C. ii and iv

D. iii and iv

Answer:



Watch Video Solution

36. An example for artificial aquatic ecosystem is ____.

A. Forest

B. Pond

C. Garden

D. Aquarium

Answer:



37. ___ are organisms that are able to produce their own Organic food.

- A. Producers
- B. Consumers
- C. Decomposer
- D. Omnivoes

Answer:



38. Plants are producers because they make their own food by_____.

- A. Respiration
- B. Consumers
- C. Photosynthesis
- D. Decomposing

Answer:



Watch Video Solution

39. Natural agents like ___ are the decomposition factors breaking complex forms to simpler unit.

A. Oxygen

B. Water

C. micro organisms

D. All the above

Answer:



Watch Video Solution

40. The average person in India produces ___ kg of waste everyday.

A. 0.45

B. 0.50

C. 0.40

D. 0.55

Answer:



Watch Video Solution

41. Most ____ pollution is caused by the burning of these fossil fuels.

A. Water

B. Land

C. Air

D. Noise

Answer:



Watch Video Solution

42. Among the following which one is not polluted by noise pollution?

A. Sounds of motor vehicles

B. Music from radio

C. Firing crackers

D. Loud music

Answer:



Watch Video Solution

43. _____ Pollution has been directly linked to stress and health impacts such as high blood pressure and hearing loss.

A. Noise

B. Land

C. Water

D. Air

Answer:



Watch Video Solution

44. ____ are called as biotic factors.



[Watch Video Solution](#)

45. ____ is the best example of natural terrestrial ecosystem.



[Watch Video Solution](#)

46. Ecosystem originated without human intervention is called ____.





[Watch Video Solution](#)

47. The ecosystem in water is called ___ ecosystem.



[Watch Video Solution](#)

48. ___ obtained energy from the chemical breakdown of dead organisms.



[Watch Video Solution](#)

49. The sequence of who eats whom in an ecosystem is called as ___.



Watch Video Solution

50. The food chain begins with the energy given by the ____.



Watch Video Solution

51. Garbage buried inside landfills remain here for a long time as they decompose very slowly

and become ____.



Watch Video Solution

52. Polluted ___ affects skin, eyes and respiratory system.



Watch Video Solution

53. Land (Soil) pollution happens when toxic ___ change the natural balance in soil.



Watch Video Solution

54. True or False.If False, give the correct statement: Forest and Mountain regions are the best examples of artificial terrestrial ecosystem.



Watch Video Solution

55. True or False.If False, give the correct statement: Fish and other water creatures and plants are maintained in terrarium.





[Watch Video Solution](#)

56. True or False.If False, give the correct statement: Animal that eat both plants and animals are called as Carnivores.



[Watch Video Solution](#)

57. True or False.If False, give the correct statement: In a food chain frog gets energy by eating grasshopper.



[Watch Video Solution](#)

58. True or False.If False, give the correct statement: The term non-biodegradable is used for those things that can be easily decomposed.



Watch Video Solution

59. True or False.If False, give the correct statement: The process by which waster

materials are used to make new products is called recycling.



[Watch Video Solution](#)

60. True or False.If False, give the correct statement: Expired medicines used batteries are domestic hazardous waste.



[Watch Video Solution](#)

61. True or False.If False, give the correct statement: Loud noise or even loud music can damage our eyes.



[Watch Video Solution](#)

62. Match the following:

I.	Abiotic factor	a)	Deer
II.	Decomposers	b)	Owl
III.	Herbivores	c)	Heat
IV.	Carnivores	d)	Human
V.	Omnivores	e)	Fungi



[Watch Video Solution](#)

63. Match the following:

I.	Avoid the usage	a)	Recycle
II.	Sharing newspapers	b)	Incinerate
III.	Using of fountain pens	c)	Buying packaged food
IV.	Using old clothes to make paper	d)	Reducing
V.	Human anatomical waste	e)	Reusing



[Watch Video Solution](#)

64. Match the following:

I.	Burning coal	a)	Land pollution
II.	Throwing plastic	b)	Noise pollution
III.	Waste water from factories is mixed with river	c)	Air pollution
IV.	Louder horn of vehicle	d)	Water pollution



[Watch Video Solution](#)

65. Analogy:

Biotic factor :Animals ::Abiotic factor: ____.



Watch Video Solution

66. Analogy:

Natural terrestrial ecosystem:Forest:: Artificial
terrestrial ecosystem: ____.



Watch Video Solution

67. Analogy:

Primary Consumer:Goat,Cow::Secondary

Consumer:_____.



Watch Video Solution

68. Analogy:

Biodegradable waste : Leaves,Garden

wastes::Non-biodegradable waste:_____



Watch Video Solution

69. Analogy:

Edaphic factor :Water in soil::Physical factor:_____



[Watch Video Solution](#)

70. List out the following by biotic and abiotic factors. (Sun,plants,animals,air,soil,bacteria,heat,minerals,



[Watch Video Solution](#)

71. Differentiate artificial ecosystem and natural ecosystem.



[Watch Video Solution](#)

72. Define Aquarium.



[Watch Video Solution](#)

73. What are autotrophs?



[Watch Video Solution](#)

74. Define - Heterotrophs.



[Watch Video Solution](#)

75. Differentiate artificial ecosystem and natural ecosystem.



[Watch Video Solution](#)

76. What are decomposers?



[Watch Video Solution](#)

77. Draw a food web.



Watch Video Solution

78. What is reuse ? Give examples.



Watch Video Solution

79. What is Landfill?



Watch Video Solution

80. Give the solid waste Management (SWM) rules.



Watch Video Solution

81. List any four domestic hazardous waste.



Watch Video Solution

82. How can we reduce water pollution?



[Watch Video Solution](#)

83. Give the types of ecosystem by flow chart.



[Watch Video Solution](#)

84. How can air pollution be controlled?



[Watch Video Solution](#)

85. Classify the most significant sources of water pollutants.



Watch Video Solution

86. Briefly explain the different measures to reduce noise pollution.



Watch Video Solution

Exercise

1. Name some domestic hazardous wastes.



[Watch Video Solution](#)

2. Usage of chemical pesticides and fertilisers causes ___ pollution.

A. Air pollution

B. Water pollution

C. Noise pollution

D. None of the above

Answer:



Watch Video Solution

3. An example for artificial aquatic ecosystem is ____.

A. Forest

B. Pond

C. Garden

D. Aquarium

Answer:



Watch Video Solution

4. The average person in India produces ___ kg of waste everyday.

A. 0.45

B. 0.5

C. 0.4

D. 0.55

Answer:



Watch Video Solution

5. Temperature, light and wind are ____ factors.



Watch Video Solution

6. ____ obtained energy from the chemical breakdown of dead organisms.



Watch Video Solution

7. Garbage buried inside landfills remain here for a long time as they decompose very slowly and become_____.



[Watch Video Solution](#)

8. True or False. If False, give the correct statement: Bacteria and fungi are called decomposers.



[Watch Video Solution](#)

9. True or False. If False, give the correct statement: Human and animal wastes are examples of non-biodegradable waste.



[Watch Video Solution](#)

10. Find whether the following sentences are true or false. If false correct the statement.

In a food chain grasshopper gets energy by eating frog.



[Watch Video Solution](#)

11. Arrange the following in a correct sequence and form a food chain:- Human-Insect → Algae → Fish



Watch Video Solution

12. What are the types of pollution?



Watch Video Solution

13. What are the pollutions caused by the objects given below: Loud speaker



Watch Video Solution

14. What are the pollutions caused by the objects given below?

Plastic



Watch Video Solution

15. How can we reduce water pollution?



[Watch Video Solution](#)

16. Match the following

I.	Decomposer	a)	Owl
II.	Herbivores	b)	Human
III.	Carnivores	c)	Deer
IV.	Omnivores	d)	Fungi



[Watch Video Solution](#)

17. Analogy:

Biodegradable waste : Leaves,Garden wastes::Non-biodegradable waste:_____



[Watch Video Solution](#)

18. Analogy:

Biotic factor: Animals::Abiotic factor:_____



[Watch Video Solution](#)

19. What are decomposers?



Watch Video Solution

20. Briefly explain the different measures to reduce noise pollution.



Watch Video Solution

21. How can we reduce air pollution?



Watch Video Solution

