



BIOLOGY

BOOKS - SURA BIOLOGY (TAMIL ENGLISH)

SUMMATIVE ASSESMENT

Exercise

1. People who made mariner's compass for the first time.

A. Indians

B. Europeans

C. Chinese

D. Egyptians

Answer:



Watch Video Solution

2. Which of the following processes add water vapour to the atmosphere?

(i) Transpiration (ii) Precipitation (iii)

Condensation (iv) Evaporation

A. (ii) and (iii)

B. (ii) and (iv)

C. (i) and (iv)

D. (i) and (ii)

Answer:



Watch Video Solution

3. Natural adhesives are made from _____.

A. Protein

B. fat

C. Starch

D. vitamins

Answer: C



Watch Video Solution

4. The saponification of a fat or oil is done using___ solution for hot process.

A. Potassium hydroxide

B. Sodium hydroxide

C. Hydrochloric acid

D. Sodium chloride

Answer: B



Watch Video Solution

5. Usage of chemical pesticides and fertilisers causes ___ pollution.

- A. Air pollution
- B. Water pollution
- C. Noise pollution
- D. None of the above

Answer:



Watch Video Solution

6. Identify the fresh water ecosystem.

A. Pond

B. Lake

C. River

D. All of them

Answer:



Watch Video Solution

7. Natural Mosquito repellent is

A. Nutmag

B. Bamboo

C. Ginger

D. Neem

Answer:



Watch Video Solution

8. Which is the national tree of India?

A. Neem tree

B. Jack tree

C. Banyan tree

D. Mango tree

Answer:



Watch Video Solution

9. _____ is a Operating System

A. Android

B. Chrome

C. Internet

D. Pendrive

Answer: A



Watch Video Solution

10. Write the Properties of magnet.



Watch Video Solution

11. Circle the odd ones and give reasons:
Lift,escalator, electromagnetic train,electric
bulb.



Watch Video Solution

12. Analogy: Population explosion :water scarcity::Recycle:___



[Watch Video Solution](#)

13. Analogy: Ground water:_____Surface water:
Lake.



[Watch Video Solution](#)

14. Differentiate magnetic and non magnetic substance.



Watch Video Solution

15. What is saline water?



Watch Video Solution

16. We could see clouds almost every day. Why doesn't it rain daily?



[Watch Video Solution](#)

17. Why earthworm is called as farmer's friend?



[Watch Video Solution](#)

18. True or False.If False give the correct statement: Maximum iron filings stick in the middle of a bar magnet when it is brought near them.



[Watch Video Solution](#)

19. True or False.If False give the correct statement: A compass can be used to find East-West direction at any place.



Watch Video Solution

20. Classify the most significant sources of water pollutants.



Watch Video Solution

21. Arrange the following in a correct sequence and form a food chain:

Rabbit → Carrot → Eagle → Snake



Watch Video Solution

22. Arrange the following in a correct sequence and form a food chain:- Human-
Insect → Algae → Fish



Watch Video Solution

23. Match the following:

1. Soap	a. $\text{CaSO}_4 \cdot 2\text{H}_2\text{O}$
2. Cement	b. NaOH
3. Fertilizers	c. RCC
4. Gypsum	d. NPK



[Watch Video Solution](#)

24. _____ gas causes tears in our eyes, while cutting onions.



[Watch Video Solution](#)

25. Fill in the blanks:

fertilizer is ecofriendly.



Watch Video Solution

26. Explain the uses of plaster of paris.



Watch Video Solution

27. What are the two types of ecosystem?



Watch Video Solution

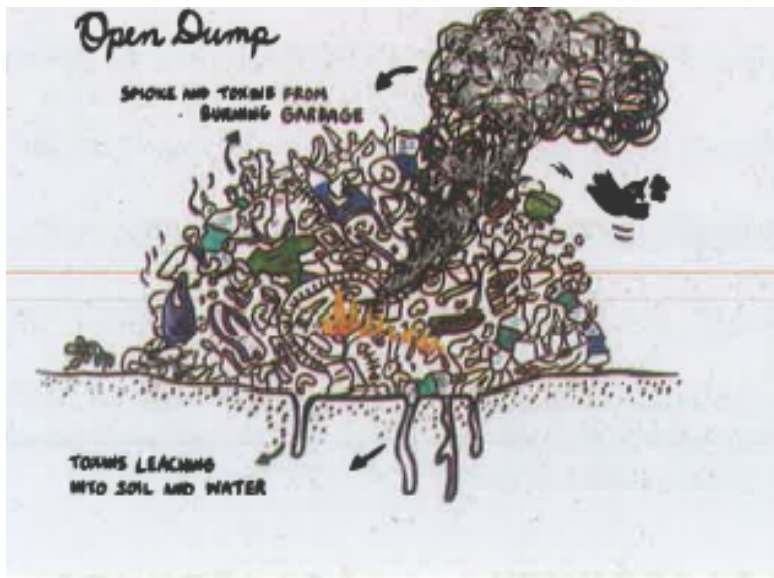
28. What is food?



Watch Video Solution

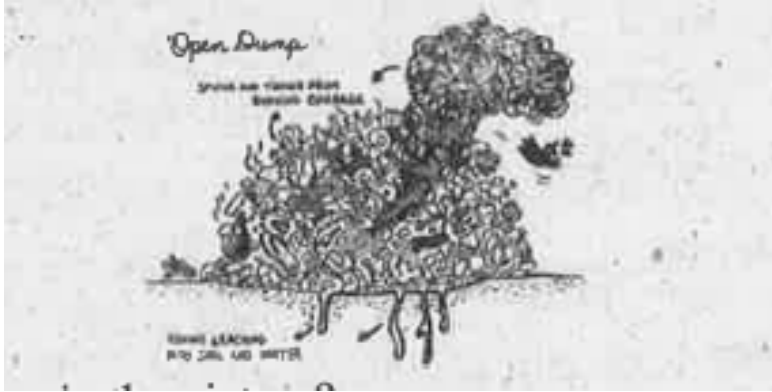
29. See the diagram and answer the following questions: Explain what is happening in the

picture?



[Watch Video Solution](#)

30. See the diagram and answer the following question:



What types of pollution are caused by open dumps?



[Watch Video Solution](#)

31. What is a symbiotic relationship?"



[Watch Video Solution](#)

32. Desert does not have water. Why? Give the reason.



Watch Video Solution

33. Give some examples of System Software.



Watch Video Solution

34. What is Free and Open Source Software?

Give any two examples.



Watch Video Solution

35. You are provided with an iron needle. How will you magnetize it?



Watch Video Solution

36. Take a glass of water with a few pins inside, How will you take out the pins without dipping your hand into water?



Watch Video Solution

37. What is rainwater harvesting? Explain in a few sentences how is it useful in in houses.



Watch Video Solution

38. What is potable water? List down its characteristics.



Watch Video Solution

39. How are detergents manufactured?



[Watch Video Solution](#)

40. Write a short note on noise pollution.



[Watch Video Solution](#)

41. Write short notes on-Timber yielding plants.



[Watch Video Solution](#)

42. What is Hardware and software?



Watch Video Solution