



BIOLOGY

BOOKS - KUMAR PRAKASHAN KENDRA

BIOLOGY (GUJRATI ENGLISH)

**SAMPLE QUESTION PAPER FOR
ANNUAL EXAM**

Section A

1. Which of the following is Archae-bacteria who is living in extreme salty areas ?

(A) Methanogens

(B) Thermophiles

(C) Halophiles

(D) Cyanobacteria

A. Methanogens

B. Thermophiles

C. Halophiles

D. Cyanobacteria

Answer:



Watch Video Solution

2. Match the column :

Column - I		Column - II	
(A)	Perianth	(i)	Lupin
(B)	Persistent	(ii)	Gloriosa
		(iii)	Chilli

(A) _____, (B) _____

(A) _____, (B) _____



Watch Video Solution

3. Match the column :

Column - I		Column - II	
(A)	Heartwood	(i)	Estimates the age of tree.
(B)	Sapwood	(ii)	Transportation of water and minerals from root to leaf.
		(iii)	Provides mechanical support.

(A) _____, (B) _____

(A) _____, (B) _____



[Watch Video Solution](#)

4. Statement A : Wooden doors swell in the monsoon.

Statement R: Swelling due to absorption of water in imbibition process.

(A) Statement A and statement R are correct and statement R is the correct explanation of statement A.

(B) Statement A and statement R are correct and statement R is not the correct explanation of statement A.

(C) Statement A is correct and R is incorrect.

(D) Statement A is incorrect and statement R is correct.

A. Statement A and statement R are correct and statement R is the correct explanation of statement A.

B. Statement A and statement R are correct and statement R is not the correct explanation of statement A.

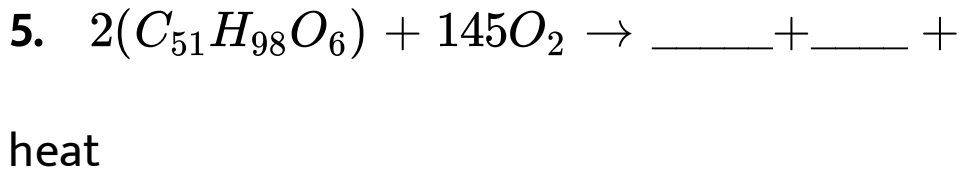
C. Statement A is correct and R is incorrect.

D. Statement A is incorrect and statement R is correct.

Answer:



Watch Video Solution



Watch Video Solution

6. If 10 glucose molecules are used in Anaerobic respiration then how many $NADH_2$ are formed ?



Watch Video Solution

7. Which hormone in plant is highly effective in proper timing for fruit ripening?

(A) ABA

(B) $CH_2 = CH_2$

(C) IAA

(D) GA

A. ABA

B. $CH_2 = CH_2$

C. IAA

D. *GA*

Answer:



Watch Video Solution

8. Calorific value of lipid is



Watch Video Solution

9. State True or False

Marasmus is caused by deficiency of protein

and calorie.



[Watch Video Solution](#)

10. State True or False

Approximately 1600 to 1800 ml of Blood per minute is filtered by kidney.



[Watch Video Solution](#)

11. Where exchange of gases takes place in insects ?



[Watch Video Solution](#)

12. Differentiate between : IC and EC



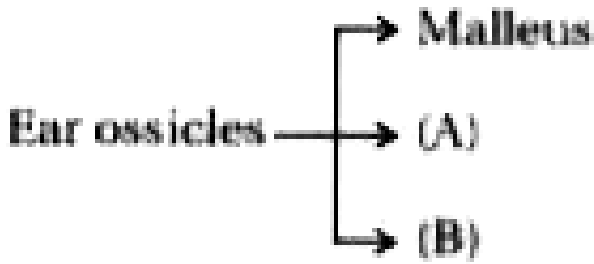
[Watch Video Solution](#)

13. State True or false

H zone in striated muscle consists of thick and thin filament.



[Watch Video Solution](#)



Write the correct names of 'A' and 'B'

 [Watch Video Solution](#)

Section B

1. Write short note on preparation of Herbarium sheet.

 [Watch Video Solution](#)

2. Give information about Bacteria living in extreme habitat.



Watch Video Solution

3. Explain protist having Autotrophic as well as Heterotrophic mode of nutrition.



Watch Video Solution

4. Give difference :

Chondrichthyes and Osteichthyes



[Watch Video Solution](#)

5. Explain third whorl of a typical flower.



[Watch Video Solution](#)

6. Explain tissue which moves particles or mucus in specific direction.



Watch Video Solution

7. List the main differences between mitosis and meiosis.



Watch Video Solution

8. Explain root nodule formation,



Watch Video Solution

9. Explain RQ Value of carbohydrates with equation.



[Watch Video Solution](#)

10. Explain Synovial joint.



[Watch Video Solution](#)

11. Draw a labeled diagram of a cell which can detect, receive and transmit different kinds of

stimuli.



[Watch Video Solution](#)

Section C

1. Describe internal structure of Polyarch Root with figure.



[Watch Video Solution](#)

2. Which of the following features is common to prokaryotes and many eukaryotes ?



[Watch Video Solution](#)

3. Explain living state.



[Watch Video Solution](#)

4. Describe briefly the three physical properties of water which helps in ascent of

water in xylem.



Watch Video Solution

5. Explain Photoperiodism.



Watch Video Solution

6. Explain Function of Renal Tubules.



Watch Video Solution

7. State the location and function of podocyte.



[Watch Video Solution](#)

Section D

1. Explain Hatch-Slack pathway.



[Watch Video Solution](#)

2. Explain the events in the heart which is cyclically repeated.



Watch Video Solution