



MATHS

BOOKS - VIKAS GUPTA MATHS (HINGLISH)

QUADRATIC EQUATIONS

Exercise Single Choice Problems

1. Sum of values of x and y satisfying $3^x - 4^y = 77$, $3^{\frac{x}{2}} - 2^y = 7$ is

A. 2

B. 3

C. 4

D. 5

Answer: D



Watch Video Solution

2. If $f(x) = \prod_{i=1}^3 (x - a_i) + \sum_{i=1}^3 -3a_i - 3x$ where $a_i < a_{i+1}$ for $i = 1, 2$,

then $f(x) = 0$ have

- A. only one distinct real root
- B. exactly two distinct real roots
- C. exactly 3 distinct real roots
- D. 3 equal real roots

Answer: C

 [Watch Video Solution](#)

3. Complete set of real values of 'a' for which the equation

$x^4 - 2ax^2 + x + a^2 - a = 0$ has all its roots real

- A. $\left[\frac{1}{4}, \infty \right)$

B. $[1, \infty)$

C. $[2, \infty)$

D. $[0, \infty)$

Answer: A



Watch Video Solution

4. The cubic polynomial with leading coefficient unity all whose roots are 3 units less than the roots of the equation $x^3 - 3x^2 - 4x + 12 = 0$ is denoted as $f(x)$, then $f'(x)$ is equal to :

A. $3x^2 + 12x + 5$

B. $3x^2 - 4x + 12$

C. $3x^2 + 12x - 5$

D. $3x^2 - 12x - 5$

Answer: A



Watch Video Solution

5. The set of value of $k(k \in R)$ for which the equation $x^2 - 4|x| + 3 - |k - 1| = 0$ will have exactly four real roots, is:

A. $(-2, 4)$

B. $(-4, 4)$

C. $(-4, 2)$

D. $(-1, 0)$

Answer: A



Watch Video Solution

6. The number of integers satisfying the inequality is $\frac{x}{x+6} \leq \frac{1}{x}$

A. 7

B. 8

C. 9

D. 3

Answer: A



[Watch Video Solution](#)

7. The product of uncommon real roots of the polynomials

$p(x) = x^4 + 2x^3 - 8x^2 - 6x + 15$ and $q(x) = x^3 + 4x^2 - x - 10$ is :

A. 4

B. 6

C. 8

D. 12

Answer: B



[Watch Video Solution](#)

8. If $\lambda_1, \lambda_2 (\lambda_1 > \lambda_2)$ are two values of λ for which the expression $f(x, y) = x^2 + \lambda xy + y^2 - 5x - 7y + 6$ can be resolved as a product of two linear factors, then the value of $3\lambda_1 + 2\lambda_2$ is

A. 5

B. 10

C. 15

D. 20

Answer: C



Watch Video Solution

9. if α & β are the roots of the quadratic equation $ax^2 + bx + c = 0$, then the quadratic equation $ax^2 - bx(x - 1) + c(x - 1)^2 = 0$ has roots

A. $\frac{2\alpha + 1}{\alpha - 1}, \frac{2\beta + 1}{\beta - 1}$

B. $\frac{2\alpha - 1}{\alpha + 1}, \frac{2\beta}{\alpha + 1}, \frac{2\beta - 1}{\beta + 1}$

C. $\frac{\alpha + 1}{\alpha - 2}, \frac{\beta + 1}{\beta - 2}$

D. $\frac{2\alpha + 3}{\alpha - 1}, \frac{2\beta + 3}{\beta - 1}$

Answer: A



Watch Video Solution

10. If $a, b \in \mathbb{R}$ distinct numbers satisfying $|a - 1| + |b - 1| = |a| + |b| = |a + 1| + |b + 1|$, Then the minimum value of $|a - b|$ is :

A. 3

B. 0

C. 1

D. 2

Answer: D



Watch Video Solution

11. The set of values of p for which $x^2 - 2px + 3p + 4$ is negative for at least one real x is

A. 3

B. 4

C. 5

D. 6

Answer: C



[Watch Video Solution](#)

12. If $x \in \mathbb{R}$ then $\frac{x^2 + 2x + a}{x^2 + 4x + 3a}$ can take all real values if

A. (1, 2)

B. [0, 1]

C. (0, 1)

D. $(-1, 0)$

Answer: C



[Watch Video Solution](#)

13. If 2 lies between the roots of the equation $t^2 - mt + 2 = 0$, ($m \in \mathbb{R}$)

then the value of $\left[\left(\frac{2|x|}{9+x^2} \right)^m \right]$ is:

(where $[.]$ denotes greatest integer function)

A. 0

B. 1

C. 8

D. 27

Answer: A



[Watch Video Solution](#)

14. The number of integral roots of the equation

$$x^8 - 24x^7 - 18x^5 + 39x^2 + 1155 = 0 \text{ is:}$$

A. 0

B. 2

C. 4

D. 6

Answer: A



[Watch Video Solution](#)

15. If the value of $m^4 + \frac{1}{m^4} = 119$ then the value of $\left| m^3 - \frac{1}{m^3} \right| =$

A. 11

B. 18

C. 24

D. 36

Answer: D



Watch Video Solution

16. If the equation $ax^2 + 2bx + c = 0$ and $ax^2 + 2cx + b = 0$, $a \neq 0$, $b \neq c$, have a common root then their other roots are the roots of the quadratic equation

A. $a^2x(x + 1) + 4bc = 0$

B. $a^2x(x + 1) + 8bc = 0$

C. $a^2x(x + 2) + 8bc = 0$

D. $a^2x(1 + 2x) + 8bc = 0$

Answer: D



Watch Video Solution

17. If $\cos \alpha, \cos \beta$ and γ are the roots of the equation $9x^3 - 9x^2 - x + 1 = 0, \alpha, \beta, \gamma \in [0, \pi]$ then the radius of the circle whose centre is $\left(\sum \alpha, \sum \cos \alpha\right)$ and passing through $(2 \sin^{-1}(\tan \pi/4), 4)$ is :

- A. 2
- B. 3
- C. 4
- D. 5

Answer: B



[Watch Video Solution](#)

18. For real values of x , the value of expression $\frac{11x^2 - 12x - 6}{x^2 + 4x + 2}$

- A. lies between -17 and -3
- B. does not lie between -17 and -3

C. lies between 3 and 17

D. does not lie between 3 and 17

Answer: B



[Watch Video Solution](#)

19. $\frac{x + 3}{x^2 - 2} \geq \frac{1}{x - 4}$ holds for all x satisfying :

A. $-2 < x < 1$ or $x > 4$

B. $-1 < x < 2$ or $x > 4$

C. $x < -1$ or $2 < x < 4$

D. $x > -1$ or $2 < x < 4$

Answer: C



[Watch Video Solution](#)

20. If $x = 4 + 3i$ (where $I = \sqrt{-1}$), then the value of $x^3 - 4x^2 - 7x + 12$ equals:

A. -88

B. $48 + 36i$

C. $-256 + 12i$

D. -84

Answer: A



Watch Video Solution

21. Let $f(x) = \frac{x^2 + x - 1}{x^2 - x + 1}$, then the largest value of $f(x) \forall x \in [-1, 3]$ is:

A. $\frac{3}{5}$

B. $\frac{5}{3}$

C. 1

D. $\frac{4}{3}$

Answer: B



Watch Video Solution

22. Let $f(x) = \frac{x^2 + x - 1}{x^2 - x + 1}$, In above problem, the range of $f(x) \forall x \in [-1, 1]$ is:

A. $\left[-1, \frac{3}{5}\right]$

B. $\left[-1, \frac{5}{3}\right]$

C. $\left[-\frac{1}{3}, 1\right]$

D. $[-1, 1]$

Answer: D



Watch Video Solution

23. If the roots of the equation $\frac{1}{x+a} + \frac{1}{x+b} = \frac{1}{c}$ are equal in magnitude but opposite in sign, then their product, is

A. $-2(p^2 + q^2)$

B. $(p^2 + q^2)$

C. $-\left(\frac{p^2 + q^2}{2}\right)$

D. $-pq$

Answer: C



Watch Video Solution

24. The roots of $a_1x^2 + b_1x + c_1 = 0$ are reciprocal of the roots of the equation $a_2x^2 + b_2x + c_2 = 0$ if

A. $(a_1a_2 - c_1c_2)^2 = (a_1b_2 - b_2c_2)(a_2b_1 - b_2c_1)$

B. $(a_1a_2 - b_1b_2)^2 = (a_2b_2 - b_1c_2)(a_2b_1 - b_2c_1)$

C. $(b_1c_2 - b_2c_1)^2 = (a_1b_2 + b_1c_2)(a_2b_1 - b_2c_1)$

$$D. (b_1c_2 - b_2c_1)^2 = (a_1b_2 + b_1c_2)(a_1b_1 - b_2c_1)$$

Answer: A



Watch Video Solution

25. If $\alpha \neq \beta$ but $\alpha^2 = 5\alpha - 3$, $\beta^2 = 5\beta - 3$, then find the equation whose roots are $\frac{\alpha}{\beta}$ and $\frac{\beta}{\alpha}$.

A. $3x^2 - 25x + 3 = 0$

B. $x^2 + 5x - 3 = 0$

C. $x^2 - 5x + 3 = 0$

D. $3x^2 - 19x + 3 = 0$

Answer: D



Watch Video Solution

26. If the difference between the roots of $x^2 + ax + b = 0$ is same as that of $x^2 + bx + a = 0$ $a \neq b$, then:

A. $a + b + 4 = 0$

B. $a + b - 4 = 0$

C. $a - b - 4 = 0$

D. $a - b + 4 = 0$

Answer: A



[Watch Video Solution](#)

27. If $\tan \theta_1, \tan \theta_2, \tan \theta_3, \tan \theta_4$ are the roots of the equation

$x^4 - x^3 \sin 2\beta + x^2 \cos 2\beta - x \cos \beta - \sin \beta = 0$ then prove that

$$\tan(\theta_1 + \theta_2 + \theta_3 + \theta_4) = \cot \beta$$

A. $\sin \beta$

B. $\cos \beta$

C. $\tan \beta$

D. $\cot \beta$

Answer: D



[Watch Video Solution](#)

28. Show that if the roots of the equation

$$(a^2 + b^2)x^2 + 2x(ac + bd) + c^2 + d^2 = 0$$
 are real, they will be equal

A. real and distinct

B. real and equal

C. imaginary

D. nothing can be said

Answer: C



[Watch Video Solution](#)

29. If α, β are the roots of $ax^2 + bx + c = 0$, the equation whose roots are $2 + \alpha, 2 + \beta$ is

A. $ax^2 + x(4a - b) + 4a - 2b + c = 0$

B. $ax^2 + x(4a - b) + 4a + 2b + c = 0$

C. $ax^2 + x(b - 4a) + 4a + 2b + c = 0$

D. $ax^2 + x(b - 4a) + 4a - 2b + c = 0$

Answer: D



Watch Video Solution

30. Minimum possible number of positive root of the quadratic equation

$$x^2 - (1 + \lambda)x + \lambda - 2 = 0, \lambda \in R$$

A. 2

B. 0

C. 1

D. can not be determined

Answer: C



Watch Video Solution

31. Let α, β be real roots of the quadratic equation $x^2 + kx + (k^2 + 2k - 4) = 0$, then the minimum value of $\alpha^z + \beta^z$ is equal to :

A. 12

B. $\frac{4}{9}$

C. $\frac{16}{9}$

D. $\frac{8}{9}$

Answer: D



Watch Video Solution

32. Polynomial $P(x) = x^2 - ax + 5$ and $Q(x) = 2x^3 + 5x - (a - 3)$

when divided by $x - 2$ have same remainders, then 'a' is equal to

A. 10

B. -10

C. 20

D. -20

Answer: D



[Watch Video Solution](#)

33. If a and b ($\neq 0$) are the roots of the equation $x^2 + ax + b = 0$ then

the least value of $x^2 + ax + b$ is

A. $\frac{2}{3}$

B. $\frac{9}{4}$

C. $-\frac{9}{4}$

D. 1

Answer: C

 [Watch Video Solution](#)

34. Let α, β be the roots of the equation $ax^2 + bx + c = 0$. A root of the equation $a^3x^2 + abcx + c^3 = 0$ is (i) $\alpha + \beta$ (ii) $\alpha^2 + \beta$ (iii) $\alpha^2 - \beta$ (iv) $\alpha^2\beta$

A. $\alpha + \beta$

B. $\alpha^2 + \beta$

C. $\alpha^2 - \beta$

D. $\alpha^2\beta$

Answer: D

 [Watch Video Solution](#)

35. Let a, b, c be the lengths of the sides of a triangle (no two of them are equal) and $k \in \mathbb{R}$. If the roots of the equation $x^2 + 2(a + b + c)x + 6k(ab + bc + ac) = 0$ are real, then:

A. $k < \frac{2}{3}$

B. $k > \frac{2}{3}$

C. $k > 1$

D. $k < \frac{1}{4}$

Answer: A



Watch Video Solution

36. Root(s) of the equation $9x^2 - 18|x| + 5 = 0$ belonging to the domain of definition of the function $f(x) = \log(x^2 - x - 2)$, is (are)

A. $\frac{-5}{3}, \frac{-1}{3}$

B. $\frac{5}{3}, \frac{1}{3}$

C. $\frac{-5}{3}$

D. $\frac{-1}{3}$

Answer: C



Watch Video Solution

37. If $\beta + \cos^2 \alpha, \beta + \sin^2 \alpha$ are the roots of $x^2 + 2bx + c = 0$ and $\gamma + \cos^4 \alpha, \gamma + \sin^4 \alpha$ are the roots of $x^2 + 2Bx + C = 0$, then :

A. $b - B = c - C$

B. $b^2 - B^2 = c - C$

C. $b^2 - B^2 = 4(c - C)$

D. $(b^2 - B^2) = C - C$

Answer: B



Watch Video Solution

38. The minimum value of the expression $|x - p| + |x - 15| + |x - p - 15|$ for 'x' in the range $p \leq x \leq 15$ where x

A. 30

B. 15

C. 10

D. 0

Answer: B



[Watch Video Solution](#)

39. If the quadratic equation

$$4x^2 - 2x - m = 0 \text{ and } 4p(q - r)x^2 - 2p(r - p)x + r(p - q) \equiv 0$$

have a common root such that second equation has equal roots then the value of m will be :

A. 0

B. 1

C. 2

D. 3

Answer: C



Watch Video Solution

40. The range of k for which the inequality

$k \cos^2 x - k \cos x + 1 \geq 0 \forall x \in (-\infty, \infty)$ is:

A. $k > \frac{1}{2}$

B. $k > 4$

C. $\frac{1}{2} \leq k \leq 4$

D. $\frac{1}{2} \leq k \leq 5$

Answer: C



Watch Video Solution

41. If $\frac{1 + \alpha}{1 - \alpha}, \frac{1 + \beta}{1 - \beta}, \frac{1 + \gamma}{1 - \gamma}$ are the roots of the cubic equation $f(x) = 0$ where α, β, γ are the roots of the cubic equation $3x^3 - 2x + 5 = 0$, then the number of negative real roots of the equation $f(x) = 0$ is :

A. 0

B. 1

C. 2

D. 3

Answer: B



Watch Video Solution

42. The sum of all integral values of λ for which $(\lambda^2 + \lambda - 2)x^2 + (\lambda + 2)x < 1 \forall x \in \mathbb{R}$, is:

A. -1

B. -3

C. 0

D. -2

Answer: B

 [Watch Video Solution](#)

43. If $\alpha, \beta, \gamma, \delta \in \mathbb{R}$ satisfy

$$\frac{(\alpha + 1)^2 + (\beta + 1)^2 + (\gamma + 1)^2 + (\delta + 1)^2}{\alpha + \beta + \gamma + \delta} = 4$$

If biquadratic equation

$$a_0x^4 + a_1x^3 + a_2x^2 + a_3x + a_4 = 0$$

has the roots

$$\left(\alpha + \frac{1}{\beta} - 1\right), \left(\beta + \frac{1}{\gamma} - 1\right), \left(\gamma + \frac{1}{\delta} - 1\right), \left(\delta + \frac{1}{\alpha} - 1\right).$$

then the value of $\frac{a_2}{a_0}$ is

A. 4

B. -4

C. 6

D. none of these

Answer: C



[Watch Video Solution](#)

44. If the complete set of value of x satisfying

$|x - 1| + |x - 2| + |x - 3| \geq 6$ is $(-\infty, a] \cup [b, \infty)$, then $a + b =$

A. 2

B. 3

C. 6

D. 4

Answer: D



[Watch Video Solution](#)

45. If exactly one root of the quadratic equation $x^2 - (a + 1)x + 2a = 0$ lies in the interval $(0, 3)$ then the set of value 'a' is given by :

- A. $(-\infty, 0) \cup (6, 0)$
- B. $(-\infty, 0) \cup (6, \infty)$
- C. $(-\infty, 0] \cup [6, \infty)$
- D. $(0, 6)$

Answer: B



[Watch Video Solution](#)

46. The condition that the roots of $x^3 + 3px^2 + 3qx + r = 0$ may be in $H. P.$ is

- A. $2p^3 - 3pqr + r^2 = 0$
- B. $3p^2q - 2pqr + p^2 = 0$
- C. $2q^3 - 3pqr + r^2 = 0$

$$D. r^3 + 3pqr + 2q^3 = 0$$

Answer: C



Watch Video Solution

47. If x is real and $4y^2 + 4xy + x + 6 = 0$, then the complete set of values of x for which y is real, is :

A. $x \leq -2$ or $x \geq 3$

B. $x \leq 2$ or $x \geq 3$

C. $x \leq -3$ or $x \geq 2$

D. $-3 \leq x \leq 2$

Answer: A



Watch Video Solution

48. The solution of the equation $\log_{\cos x^2}(3 - 2x) < \log_{\cos x^2}(2x - 1)$ is:

A. $(1/2, 1)$

B. $(-\infty, 1)$

C. $(1/2, 3)$

D. $(1, \infty - \sqrt{2\pi\pi}, n \in N)$

Answer: A



Watch Video Solution

49. The roots α and β of the quadratic equation $px^2 + qx + r = 0$ are real and of opposite signs. The roots of $\alpha(x - \beta)^2 + \beta(x - \alpha)^2 = 0$ are:

A. positive

B. negative

C. real and of opposite sign

D. imaginary

Answer: C



Watch Video Solution

50. Let a, b and c be three distinct real roots of the cubic $x^3 + 2x^2 - 4x - 4 = 0$. If the equation $x^3 + qx^2 + rx + s = 0$ has roots $\frac{1}{a}, \frac{1}{b}$ and $\frac{1}{c}$, then the value of $(q + r + s)$ is equal to :

A. $\frac{3}{4}$

B. $\frac{1}{2}$

C. $\frac{1}{4}$

D. $\frac{1}{6}$

Answer: C



Watch Video Solution

51. Solution set of the inequality, $2 - \log_2(x^2 + 3x) \geq 0$ is-

A. $[-2, 1]$

B. $[-4, -3] \cup (0, 1)$

C. $(-\infty, -3) \cup (1, \infty)$

D. $(-\infty, -4) \cup [1, \infty)$

Answer: B



Watch Video Solution

52. For what least integral 'k' is the quadratic trinomial

$(k - 2)x^2 + 8x + (k + 4)$ is positive for all real values of x ?

A. $k = 4$

B. $k = 5$

C. $k = 3$

D. $k = 6$

Answer: B

 [Watch Video Solution](#)

53. If roots of the equation $(m - 2)x^2 - (8 - 2m)x - (8 - 3m) = 0$ are opposite in sign then the number of integral values of m is/are :

- A. 0
- B. 1
- C. 2
- D. more than 2

Answer: A

 [Watch Video Solution](#)

54. If $\log_{0.6} \left(\log_6 \left(\frac{x^2 + x}{x + 4} \right) \right) < 0$, then complete set of value of 'x' is:

- A. $(-4, -3) \cup (8, \infty)$
- B. $(-\infty, -3) \cup (8, \infty)$

C. $(8, \infty)$

D. none of these

Answer: A



[Watch Video Solution](#)

55. Two different real numbers α and β are the roots of the quadratic equation $ax^2 + c = 0$, $a, c \neq 0$, then $\alpha^3 + \beta^3$ is:

A. a

B. $-c$

C. 0

D. -1

Answer: C



[Watch Video Solution](#)

56. The least integral value of 'k' for which

$(k - 1)x^2 - (k + 1)x + (k + 1)$ is positive for all real value of x is:

A. 1

B. 2

C. 3

D. 4

Answer: B



[Watch Video Solution](#)

57. If $(-2, 7)$ is the highest point on the graph of $y = -2x^2 - 4ax + \lambda$, then λ equals

A. 31

B. 11

C. -1

D. $-1/3$

Answer: C



Watch Video Solution

58. If $a + b + c = 0, a, b, c \in Q$ then roots of the equation $(b + c - a)x^2 + (c + a - c) = 0$ are:

A. rational

B. irrational

C. imaginary

D. none of these

Answer: A



Watch Video Solution

59. If two roots of $x^3 - ax^2 + bx - c = 0$ are equal in magnitude but opposite in sign. Then:

A. $a + bc = 0$

B. $a^2 = bc$

C. $ab = c$

D. $a - b + c = 0$

Answer: C



[Watch Video Solution](#)

60. If α and β are the real roots of $x^2 + px + q = 0$ and α^4, β^4 are the roots of $x^2 - rx + s = 0$. Then the equation $x^2 - 4qx + 2q^2 - r = 0$ has always $(\alpha \neq \beta, p \neq 0, p, q, r, s \in \mathbb{R})$:

A. one positive and one negative root

B. two positive roots

C. two negative roots

D. can't say anything

Answer: A



Watch Video Solution

61. If $x^2 + px + 1$ is a factor of $ax^3 + bx + c$ then a) $a^2 + c^2 = -ab$ b) $a^2 + c^2 = ab$ c) $a^2 - c^2 = ab$ d) $a^2 - c^2 = -ab$

A. $a^2 + c^2 = -ab$

B. $a^2 + c^2 = ab$

C. $a^2 - c^2 = ab$

D. $a^2 - c^2 = -ab$

Answer: C



Watch Video Solution

62. In a $\triangle ABC$ $\tan \frac{A}{2}, \tan \frac{B}{2}, \tan \frac{C}{2}$ are in H.P., then the value of $\cot \frac{A}{2} \cot \frac{C}{2}$ is :

A. 3

B. 2

C. 1

D. $\sqrt{3}$

Answer: A



[Watch Video Solution](#)

63. Q. Let $f(x) = 10 - |x - 10| \quad \forall x \in [-9, 9]$ If M and m be the maximum and minimum value of $f(x)$ respectively then

A. $M + m = 0$

B. $2M + m = -9$

C. $2M + m = 7$

D. $M = m = 7$

Answer: A



Watch Video Solution

64. Solution of the quadratic equation $(3|x| - 3)^2 = |x| + 7$, which belongs to the domain of the function $y = \sqrt{(x - 4)x}$ is :

A. $\pm \frac{1}{9}, \pm 2$

B. $\frac{1}{9}, 8$

C. $-2, -\frac{1}{9}$

D. $-\frac{1}{9}, 8$

Answer: C



Watch Video Solution

65. Number of real solutions of the equation $x^2 + 3|x| + 2 = 0$ is:

A. 0

B. 2

C. 2

D. -4

Answer: A



[Watch Video Solution](#)

66. If the roots of $x^2 - bx + c = 0$ are two consecutive integers, then

$b^2 - 4c$ is 0 (b) 1 (c) 2 (d) none of these

A. 3

B. -2

C. 1

D. 2

Answer: C



Watch Video Solution

67. If x is real, the maximum value of $\frac{3x^2 + 9x + 17}{3x^2 + 9x + 7}$ is

A. 41

B. 1

C. $\frac{17}{7}$

D. $\frac{1}{4}$

Answer: A



Watch Video Solution

68. If $\frac{x^2 + 2x + 7}{2x + 3} < 6$, $x \in \mathbb{R}$ then

A. $x \in \left(-\infty, -\frac{3}{2} \right) \cup (11, \infty)$

B. $x \in (-\infty, -1) \cup (11, \infty)$

C. $x \in \left(-\frac{3}{2}, -1\right)$

D. $x \in \left(-\infty, -\frac{3}{2}\right) \cup (-1, 11)$

Answer: D



Watch Video Solution

69. If x is real, then range of $\frac{3x - 2}{7x + 5}$ is :

A. $R - \left\{\frac{2}{5}\right\}$

B. $R - \left\{\frac{3}{7}\right\}$

C. $(-\infty, \infty)$

D. $R - \left\{\frac{-2}{5}\right\}$

Answer: B



Watch Video Solution

70. Let A denotes the set of values of x for which $\frac{x+2}{x-4} \leq 0$ and B denotes the set of values of x for which $x^2 - ax - 4 \leq 0$. If B is the subset of A then a cannot take integral value (a) 0, (b) 1 (c) 2 (d) 3

A. 0

B. 1

C. 2

D. 3

Answer: D



Watch Video Solution

71. If the quadratic polynomial $P(x) = (p-3)x^2 - 2px + 3p - 6$ ranges from $[0, \infty)$ for every $x \in R$, then the value of p can be:

A. 3

B. 4

C. 6

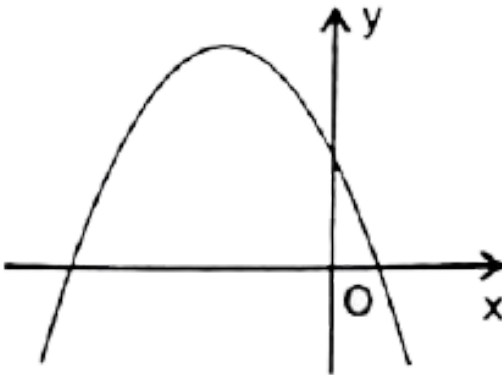
D. 7

Answer: C



Watch Video Solution

72. If graph of the quadratic $y = ax^2 + bx + c$ is given below :



then:

A. $a < 0, b > 0, c > 0$

B. $a < 0, b > 0, c < 0$

C. $a < 0, b < 0, c > 0$

D. $a < 0, b < 0, c < 0$

Answer: C



Watch Video Solution

73. If quadratic equation $ax^2 + bx + c = 0$ does not have real roots, then which of the following may be false (a) $a(a - b + c) > 0$ (b) $c(a - b + c) > 0$ (c) $b(a - b + c) > 0$ (d) $(a + b + c)(a - b + c) > 0$

A. $a(a - b + c) > 0$

B. $c(a - b + c) > 0$

C. $b(a - b + c) > 0$

D. $(a + b + c)(a - b + c) > 0$

Answer: C



Watch Video Solution

74. Minimum values of $y = x^2 - 3x + 5$, $x \in [-4, 1]$ is:

A. 3

B. $\frac{11}{4}$

C. 0

D. 9

Answer: A



[Watch Video Solution](#)

75. If $3x^2 - 17x + 10 = 0$ and $x^2 - 5x + m = 0$ has a common root, then sum of all possible real values of 'm' is:

A. 0

B. $-\frac{26}{9}$

C. $\frac{29}{9}$

D. $\frac{26}{3}$

Answer: C



Watch Video Solution

76. For real numbers x and y , if $x^2 + xy - y^2 + 2x - y + 1 = 0$, then (a) y can not be between 0 and $\frac{8}{5}$ (b) y can not be between $-\frac{8}{5}$ and $\frac{8}{5}$ (c) y cannot be between $-\frac{8}{5}$ and 0 (d) y cannot be between $-\frac{16}{5}$ and 0

A. y can not be between 0 and $\frac{8}{5}$

B. y can not be between $-\frac{8}{5}$ and $\frac{8}{5}$

C. y can not be between $-\frac{8}{5}$ and 0

D. y can not be between $-\frac{16}{5}$ and 0

Answer: C



Watch Video Solution

77. If $3x^4 - 6x^3 + kx^2 - 8x - 12$ is divisible by $x - 3$, then it is also divisible by :

A. $3x^2 - 4$

B. $3x^2 + 4$

C. $3x^2 + x$

D. $3x^2 - x$

Answer: B



[Watch Video Solution](#)

78. The complete set of values of a so that equation

$\sin^4 x + a \sin^2 x + 4 = 0$ has at least one real root is (A) $(-\infty, -5]$

(B) $(-\infty, 4] \cup [4, \infty)$ (C) $(-\infty, -4]$ (D) $[4, \infty)$

A. $(\infty, -5]$

B. $(-\infty, 4] \cup [4, \infty)$

C. $(-\infty, -4]$

D. $[4, \infty)$

Answer: A



[Watch Video Solution](#)

79. Let r_1, s_1, t be the roots of the equation $x^3 + ax^2 + bx + c = 0$, such that $(rs)^2 + (st)^2 + (rt)^2 = b^2 - kac$, then $k =$

A. 1

B. 2

C. 3

D. 4

Answer: B



[Watch Video Solution](#)

80. If the roots of the cubic $x^3 + ax^2 + bx + c = 0$ are three consecutive positive integers, then the value of $\frac{a^2}{b+1} =$

A. 1

B. 2

C. 3

D. 4

Answer: C



[Watch Video Solution](#)

81. Let 'k' be a real number. The minimum number of distinct real roots possible of the equation $(3x^2 + kx + 3)(x^2 + kx - 1) = 0$ is

A. 0

B. 2

C. 3

D. 4

Answer: B

 [Watch Video Solution](#)

82. If r and s are variables satisfying the equation $\frac{1}{r+s} = \frac{1}{r} + \frac{1}{s}$. The value of $\left(\frac{r}{s}\right)^3$ is equal to :

A. 1

B. -1

C. 3

D. not possible to determine

Answer: A

 [Watch Video Solution](#)

83. Let $f(x) = x^2 + ax + b$. If the maximum and the minimum values of $f(x)$ are 3 and 2 respectively for $0 \leq x \leq 2$, then the possible ordered pair(s) of (a,b) is/are

A. $(-2, 3)$

B. $(-3/2, 2)$

C. $(-5/2, 3)$

D. $(-5/2, 2)$

Answer: A



[Watch Video Solution](#)

84. The roots of the equation $|x^2 - x - 6| = x + 2$ are

A. $-2, 2, 4$

B. $0, 1, 4$

C. $-2, 1, 4$

D. 0, 2, 4

Answer: A



[Watch Video Solution](#)

85. If a, b, c be the sides of ABC and equations $ax^2 + bx + c = 0$ and $5x^2 + 12x + 13 = 0$ have a common root, then find $\angle C$.

A. 60°

B. 90°

C. 120°

D. 45°

Answer: B



[Watch Video Solution](#)

86. If α, β and γ are three real roots of the equation

$x^3 - 6x^2 + 5x - 1 = 0$, then the value of $\alpha^4 + \beta^4 + \gamma^4$ is:

A. 250

B. 650

C. 150

D. 950

Answer: B



[Watch Video Solution](#)

87. If one of the roots of the equation $2x^2 - 6x + k = 0$ is $\left(\frac{\alpha + 5i}{2}\right)$,

then the values of α and k are

A. $\alpha = 3, k = 8$

B. $\alpha = \frac{3}{2}, k = 17$

C. $\alpha = -3, k = -17$

D. $\alpha = 3, k = 17$

Answer: D



[Watch Video Solution](#)

88. Let x_1 and x_2 be the real roots of the equation $x^2 - (k - 2)x + (k^2 + 3k + 5) = 0$ then the maximum value of $x_1^2 + x_2^2$ is

A. 19

B. 18

C. $\frac{50}{9}$

D. non-existent

Answer: B



[Watch Video Solution](#)

89. The set of values of a for which $(a - 1)x^2 - (a + 1)x + a - 1 \geq 0$ true for all $x \geq 2$ is

A. $\left(\frac{3}{7}, 1\right]$

B. $(-\infty, 1)$

C. $\left(-\infty, \frac{7}{3}\right]$

D. $\left[\frac{7}{3}, \infty\right)$

Answer: D



[Watch Video Solution](#)

90. If α, β be the roots of $4x^2 - 17x + \lambda = 0, \lambda \in R$ such that $1 < \alpha < 2$ and $2 < \beta < 3$ then the number of integral values of λ is `

A. 1

B. 2

C. 3

D. 4

Answer: B



Watch Video Solution

91. Assume that p is a real number. In order of ${}^3\sqrt{x + 3p + 1} - {}^3\sqrt{x} = 1$ to have real solutions, it is necessary that:

A. $p \geq 1/4$

B. $p \geq -1/4$

C. $p \geq 1/3$

D. $p \geq -1/3$

Answer: B



Watch Video Solution

92. If α, β are the roots of the quadratic equation $x^2 - \left(3 + 2\sqrt{\log_2 3} - 3\sqrt{\log_3 2}\right)x - 2\left(3^{\log_3 2} - 2^{\log_2 3}\right) = 0$, then the value of $\alpha^2 + \alpha\beta + \beta^2$ is equal to :

A. 3

B. 5

C. 7

D. 11

Answer: C



Watch Video Solution

93. If m is the minimum value of $f(x, y) = x^2 - 4x + y^2 + 6y$ when x and y are subjected to the restrictions $0 \leq x \leq 1$ and $0 \leq y \leq 1$, then the value of $|m|$ is _____

A. -1

B. -2

C. -3

D. -5

Answer: C



Watch Video Solution

94. The expression $ax^2 + 2bx + c$, where 'a' is non-zero real number, has same sign as that of 'a' for every real value of x, then roots of quadratic equation $ax^2 + (b - c)x - 2b - c - a = 0$ are: (a) real and equal (b) real and unequal (c) non-real having positive real part (d) non-real having negative real part

A. real and equal

B. real and unequal

C. non-real having positive real part

D. non-real having negative real part

Answer: B



[Watch Video Solution](#)

95. Let a, b and c be the roots of $x^3 - x + 1 = 0$, then the value of

$\left(\frac{1}{a+1} + \frac{1}{b+1} + \frac{1}{c+1} \right)$ equals to :

A. 1

B. -1

C. 2

D. -2

Answer: D



[Watch Video Solution](#)

96. 25. The integer k for which the inequality $x^2 - 2(4k+1)x + 15k^2 - 7k - 6 > 0$ is valid for any real x is (2) 3 (3) 4 (4) 5

A. 2

B. 3

C. 4

D. infinite

Answer: B



Watch Video Solution

97. The number of integral values which can be taken by the expression,

$$f(x) = \frac{x^3 - 1}{(x - 1)(x^2 - x + 1)} \text{ for } x \in R, \text{ is:}$$

A. 1

B. 2

C. 3

D. infinite

Answer: B



Watch Video Solution

98. The complete set of values of m for which the inequality

$$\frac{x^2 - mx - 2}{x^2 + mx + 4} > -1 \text{ is satisfied } \forall x \in R, \text{ is :}$$

A. $m = 0$

B. $-1 < m < 1$

C. $-2 < m < 2$

D. $-4 < m < 4$

Answer: D



Watch Video Solution

99. The complete set of values of a for which the roots of the equation

$$x^2 - 2|a + 1|x| - 1 = 0 \text{ are real is given by :}$$

A. $(-\infty, -2] \cup [0, \infty)$

B. $(-\infty, -1] \cup [0, \infty)$

C. $(-\infty, -1] \cup [1, \infty)$

D. $(-\infty, -2] \cup [1, \infty)$

Answer: A



Watch Video Solution

100. If the quadratic polynomials defined on real coefficient

$P(x) = a_1x^2 + 2b_1x + c_1$ and $Q(x) = a_2x^2 + 2b_2x + c_2$ take positive

values $\forall x \in R$, what can we say for the trinomial

$$g(x) = a_1a_2x^2 + b_1b_2x + c_1c_2?$$

A. $f(x) < 0 \forall x \in R$

B. $f(x) > 0 \forall x \in R$

C. $f(x)$ takes both positive and negative values

D. Nothing can be said about $f(x)$

Answer: B



[Watch Video Solution](#)

101. $x^2 + 4 + 3 \cos(ax + b) = 2x$ has atleast one solution then the value of $a+b$ is :

A. $\frac{\pi}{4}$

B. $\frac{\pi}{3}$

C. $\frac{\pi}{2}$

D. π

Answer: D



[Watch Video Solution](#)

102. Let α, β be the roots of $x^2 - 4x + A = 0$ and γ, δ be the roots of $x^2 - 36x + B = 0$. If $\alpha, \beta, \gamma, \delta$ form an increasing G.P. and $A^t = B$, then

value of 't' equals:

A. 4

B. 5

C. 6

D. 8

Answer: B



[Watch Video Solution](#)

103. How many roots does the following equation possess

$$3^{|x|}(|2 - |x||) = 1?$$

A. 2

B. 3

C. 4

D. 6

Answer: C



Watch Video Solution

104. If $\tan \alpha$ is equal to the integral solution of the inequality $4x^2 - 16x + 15 < 0$ and $\cos \beta$ is equal to the slope of the bisector of the first quadrant, then $\sin(\alpha + \beta)\sin(\alpha - \beta)$ is equal to $\frac{3}{5}$ (b) $\frac{3}{5}$ (c) $\frac{2}{\sqrt{5}}$
(d) $\frac{4}{5}$

A. $-\frac{3}{5}$

B. $-\frac{4}{5}$

C. $\frac{2}{\sqrt{2}}$

D. 3

Answer: B



Watch Video Solution

105. Graph of $f(x) = x$ & $g(x) = 2 + \ln x$, $x > 0$ where e is base of natural log. Graph intersect at=?

- A. once in $(0, 1)$ and never in $(1, \infty)$
- B. once in $(0, 1)$ and once in (e^2, ∞)
- C. once in $(0, 1)$ and one in (e, e^2)
- D. more than twice in $(0, \infty)$

Answer: C



[Watch Video Solution](#)

106. The sum of all the real roots of equation

$$x^4 - 3x^3 - 2x^2 - 3x + 1 = 0 \text{ is}$$

- A. 1
- B. 2
- C. 3

D. 4

Answer: D

 [Watch Video Solution](#)

107. If $\alpha, \beta (\alpha < \beta)$ are the real roots of equation $x^2 - (k + 4)x + k^2 - 12 = 0$ such that $4 \in (\alpha, \beta)$, then the number of integral value of k is equal to

A. 4

B. 5

C. 6

D. 7

Answer: D

 [Watch Video Solution](#)

108. Let α, β be real roots of the quadratic equation $x^2 + kx + (k^2 + 2k - 4) = 0$, then the minimum value of $\alpha^z + \beta^z$ is equal to :

- A. 9
- B. 10
- C. 11
- D. 12

Answer: D



[Watch Video Solution](#)

109. Let $f(x) = a^x - x \ln a$, $a > 1$. Then the complete set of real values of x for which $f'(x) > 0$ is

- A. $(1, \infty)$
- B. $(-1, \infty)$

C. $(0, \infty)$

D. $(0, 1)$

Answer: C



Watch Video Solution

110. If a, b and c are the roots of the equation $x^3 + 2x^2 + 1 = 0$, find

$$\begin{vmatrix} a & b & c \\ b & c & a \\ c & a & b \end{vmatrix}.$$

A. 8

B. -8

C. 0

D. 2

Answer: A



Watch Video Solution

111. Let α, β are the two real roots of equation $x^2 + px + q = 0, p, q \in R, q \neq 0$. If the quadratic equation $g(x) = 0$ has two roots $\alpha + \frac{1}{\alpha}, \beta + \frac{1}{\beta}$ such that sum of roots is equal to product of roots, then the complete range of q is:

- A. $\left[\frac{1}{3}, 3\right]$
- B. $\left(\frac{1}{3}, 3\right]$
- C. $\left[\left(1-\frac{1}{3}\right), 3\right)$
- D. $\left(-\infty, \frac{1}{3}\right) \cup [3, \infty)$

Answer: A



Watch Video Solution

112. If the equation $\ln(x^2 + 5x) - \ln(x + a + 3) = 0$ has exactly one solution for x , then possible integral value of a is:

A. 4

B. 5

C. 6

D. 7

Answer: B



Watch Video Solution

113. $f(x) = x^2 + \frac{1}{x^2} - 6x - \frac{6}{x} + 2$ then min value of $f(x)$

A. -2

B. -8

C. -9

D. -12

Answer: C



Watch Video Solution

114. If $x^2 + bx + b$ is a factor of $x^3 + 2x^2 + 2x + c$ ($c \neq 0$), then $b - c$ is :

A. 2

B. -1

C. 0

D. -2

Answer: C



[Watch Video Solution](#)

115. If roots of $x^3 + 2x^2 + 1 = 0$ are α, β and γ , then the value of $(\alpha\beta)^3 + (\beta\gamma)^3 + (\alpha\gamma)^3$, is:

A. -11

B. 3

C. 4

D. 6

Answer: B



[Watch Video Solution](#)

116. How many roots does the following equation possess

$$3^{|x|}(|2 - |x||) = 1?$$

A. 2

B. 3

C. 4

D. 6

Answer: C



[Watch Video Solution](#)

117. The sum of all the real roots of equation $x^4 - 3x^3 - 2x^2 - 3x + 1 = 0$ is

- A. 1
- B. 2
- C. 3
- D. 4

Answer: D



[Watch Video Solution](#)

118. If α and β are the roots of the quadratic equation $4x^2 + 2x - 1 = 0$

then the value of $\sum_{r=1}^{\infty} (\alpha^r + \beta^r)$ is :

- A. 2
- B. 3
- C. 6

D. 0

Answer: D



[Watch Video Solution](#)

119. The number of value(s) of x satisfying the equation $(2011)^x + (2012)^x + (2013)^x - (2014)^x = 0$ is/are :

A. exactly 2

B. exactly 1

C. more than one

D. 0

Answer: B



[Watch Video Solution](#)

120. If $\alpha, \beta (\alpha < \beta)$ are the real roots of equation $x^2 - (k + 4)x + k^2 - 12 = 0$ such that $4 \in (\alpha, \beta)$, then the number of integral values of k is equal to

A. 4

B. 5

C. 6

D. 7

Answer: D



Watch Video Solution

121. Let α, β be real roots of the quadratic equation $x^2 + kx + (k^2 + 2k - 4) = 0$, then the maximum value of $(\alpha^2 + \beta^2)$ is equal to :

A. 9

B. 10

C. 11

D. 12

Answer: D



[Watch Video Solution](#)

122. The set of values of a for which $(a - 1)x^2 - (a + 1)x + a - 1 \geq 0$ true for all $x \geq 2$ is

A. $(-\infty, 1)$

B. $\left[\frac{7}{3}, \infty\right)$

C. $\left[\frac{3}{7}, \infty\right)$

D. none of these

Answer: B



[Watch Video Solution](#)

123. If the equation $x^2 + ax + 12 = 0$, $x^2 + bx + 15 = 0$ and $x^2(a + b)x + 36 = 0$ have a common positive root, then $b - 2a$ is equal to

- A. -6
- B. 22
- C. 6
- D. -22

Answer: C



[Watch Video Solution](#)

124. The equation $e^{\sin x} - e^{-\sin x} - 4 = 0$ has (A) infinite number of real roots (B) no real roots (C) exactly one real root (D) exactly four real roots

- A. infinite number of real roots

B. no real root

C. exactly one real root

D. exactly four real roots

Answer: B



[Watch Video Solution](#)

125. The difference between the maximum and minimum value of the function $f(x) = 3 \sin^4 x - \cos^6 x$ is :

A. $\frac{3}{2}$

B. $\frac{5}{2}$

C. 3

D. 4

Answer: D



[Watch Video Solution](#)

126. If α, β are the roots of $x^2 - 3x + a = 0$, $a \in \mathbb{R}$ and $1 < \alpha < \beta$,

then find the values of a

A. $\lambda \in \left(2, \frac{9}{4}\right]$

B. $\lambda \in \left(-\infty, \frac{9}{4}\right]$

C. $\lambda \in (2, \infty)$

D. $\lambda \in (-\infty, 2)$

Answer: D



Watch Video Solution

127. If $2x^2 + 5x + 7 = 0$ and $ax^2 + bx + c = 0$ have at least one root common such that $a, b, c \in \{1, 2, \dots, 100\}$, then the difference between the maximum and minimum values of $a + b + c$ is:

A. 196

B. 284

C. 182

D. 126

Answer: C



Watch Video Solution

128. Two particles, A and B, are in motion in the xy -plane. Their coordinates at each instant of time $t (t \geq 0)$ are given by $x_A = t, y_A = 2t, x_B = 1 - t$ and $y_B = t$. The minimum distance between particles A and B is :

A. $\frac{1}{5}$

B. $\frac{1}{\sqrt{5}}$

C. 1

D. $\sqrt{\frac{2}{3}}$

Answer: B



Watch Video Solution

129. If $a \neq 0$ and the equation $ax^2 + bx + c = 0$ has two roots α and β such that $\alpha \leq -3$ and $\beta > 2$, which of the following is always true ?

A. $a(a + |b| + c) > 0$

B. $a(a + |b| + c) < 0$

C. $9a - 3b + c > 0$

D. $(9a - 3b + c)(4a + 2b + c) < 0$

Answer: B



Watch Video Solution

130. The number of negative real roots of the equation

$$(x^2 + 5x)^2 - 24 = 2(x^2 + 5x) \text{ is :}$$

A. 4

B. 3

C. 2

D. 1

Answer: B



Watch Video Solution

131. The number of real values of x satisfying the equation

$$3|x - 2| + |1 - 5x| + 4|3x + 1| = 13 \text{ is:}$$

A. 1

B. 4

C. 2

D. 3

Answer: C

 [Watch Video Solution](#)

132. If $\log_{\cos x} \sin x \geq 2$ and $x \in [0, 3\pi]$ then $\sin x$ lies in the interval

A. $\left[\frac{\sqrt{5} - 1}{2}, 1 \right]$

B. $\left[0, \frac{\sqrt{5} - 1}{2} \right]$

C. $\left[\frac{1}{2}, 1 \right]$

D. none of these

Answer: B

 [Watch Video Solution](#)

133. Let $f(x) = x^2 + bx + c$, minimum value of $f(x)$ is -5, then absolute value of the difference of the roots of $f(x)$ is :

A. 5

B. $\sqrt{20}$

C. $\sqrt{15}$

D. Can't be determined

Answer: B



[Watch Video Solution](#)

134. Sum of all the solutions of the equation $|x - 3| + |x + 5| = 7x$, is :

A. $\frac{6}{7}$

B. $\frac{8}{7}$

C. $\frac{58}{63}$

D. $\frac{8}{45}$

Answer: B



[Watch Video Solution](#)

135. $f(x) = x^2 + \frac{1}{x^2} - 6x - \frac{6}{x} + 2$ then min value of $f(x)$

- A. -2
- B. -8
- C. -9
- D. -12

Answer: C



[Watch Video Solution](#)

136. If $a + b + c = 1$, $a^2 + b^2 + c^2 = 9$ and $a^3 + b^3 + c^3 = 1$, then

$\frac{1}{a} + \frac{1}{b} + \frac{1}{c}$ is (i)0 (ii) -1 (iii)1 (iv)3

- A. $\frac{2}{3}$
- B. 5
- C. 6
- D. 1

Answer: D



Watch Video Solution

137. If roots of $x^3 + 2x^2 + 1 = 0$ are α, β and γ , then the value of $(\alpha\beta)^3 + (\beta\gamma)^3 + (\alpha\gamma)^3$, is :

A. -11

B. 3

C. 0

D. -2

Answer: B



Watch Video Solution

138. If $x^2 + bx + b$ is a factor of $x^3 + 2x^2 + 2x + c (c \neq 0)$, then $b - c$ is :

A. 2

B. -1

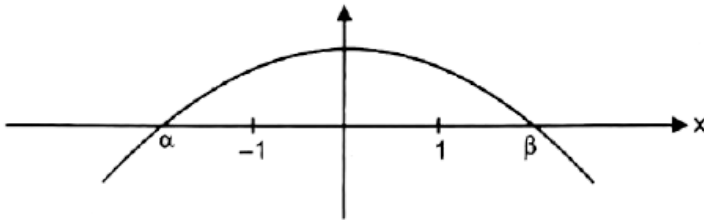
C. 0

D. -2

Answer: C

 Watch Video Solution

139. The graph of quadratic polynomial $f(x) = ax^2 + bx + c$ is shown below



A. $\frac{c}{a}|\beta - \alpha| < -2$

B. $f(x) > 0 \forall x > \beta$

C. $ac > 0$

$$D. \frac{c}{a} > -1$$

Answer: A



Watch Video Solution

140. If $f(x) = \frac{x^2 - 3x + 4}{x^2 + 3x + 4}$, then complete solution of $0 < f(x) < 1$,

is :

A. $(-\infty, \infty)$

B. $(0, \infty)$

C. $(-\infty, 0)$

D. $(0, 1) \cup (2, \infty)$

Answer: B



Watch Video Solution

141. If α, β, γ are the roots of the equation $x^3 + 2x^2 - x + 1 = 0$, then value of $\frac{(2 - \alpha)(2 - \beta)(2 - \gamma)}{(2 + \alpha)(2 + \beta)(2 + \gamma)}$ is :

A. 5

B. -5

C. 10

D. $\frac{5}{3}$

Answer: B



[Watch Video Solution](#)

142. If α and β are roots of the quadratic equation $x^2 + 4x + 3 = 0$, then the equation whose roots are $2\alpha + \beta$ and $\alpha + 2\beta$ is :

A. $x^2 - 12x + 35 = 0$

B. $x^2 + 12x - 33 = 0$

C. $x^2 - 12x - 33 = 0$

D. $x^2 + 12x + 35 = 0$

Answer: D



Watch Video Solution

143. IF a, b, c are real distinct numbers such that $a^3 + b^3 + c^3 = 3abc$, then the quadratic equation $ax^2 + bx + c = 0$ has

- A. Real roots
- B. At least one negative root
- C. Both roots are negative
- D. Non real roots

Answer: A



Watch Video Solution

144. If the equation $x^2 + ax + 12 = 0$, $x^2 + bx + 15 = 0$ and $x^2(a + b)x + 36 = 0$ have a common positive root, then $b - 2a$ is equal to

- A. -6
- B. 22
- C. 6
- D. -22

Answer: C



[Watch Video Solution](#)

145. Consider the equation $x^3 - ax^2 + bx - c = 0$, where a, b, c are rational number, $a \neq 1$. It is given that x_1, x_2 and x_1x_2 are the real roots of the equation. Then $x_1x_2 \left(\frac{a+1}{b+c} \right) =$

- A. 1

B. 2

C. 3

D. 4

Answer: A



[Watch Video Solution](#)

146. The set of values of a for which $(a - 1)x^2 - (a + 1)x + a - 1 \geq 0$ true for all $x \geq 2$ is

A. $(-\infty, . 1)$

B. $\left[\frac{7}{3}, \infty\right)$

C. $\left[\frac{3}{7}, \infty\right)$

D. none of these

Answer: B



[Watch Video Solution](#)

147. The number of real solution of the equation $|x|^2 - 3|x| + 2 = 0$ is

A. 2

B. 4

C. 1

D. 3

Answer: B



[Watch Video Solution](#)

148. The equation $e^{\sin x} - e^{-\sin x} - 4 = 0$ has (A) infinite number of real roots (B) no real roots (C) exactly one real root (D) exactly four real roots

A. infinite number of real roots

B. no real root

C. exactly one real root

D. exactly four real roots

Answer: B



[Watch Video Solution](#)

149. If α, β are the roots of the quadratic equation $x^2 - 2(1 - \sin 2\theta)x - 2\cos^2(2\theta) = 0$, then the minimum value of $(\alpha^2 + \beta^2)$ is equal to

A. -4

B. 8

C. 0

D. 2

Answer: C



[Watch Video Solution](#)

150. If the equation $|\sin x|^2 + |\sin x| + b = 0$ has two distinct roots in $[0, \pi[$ then the number of integers in the range of b is equal to:

A. 0

B. 1

C. 2

D. 3

Answer: D



[Watch Video Solution](#)

151. If $a \neq 0$ and the equation $ax^2 + bx + c = 0$ has two roots α and β such that $\alpha \leq -3$ and $\beta > 2$, which of the following is always true ?

A. $a(a + |b| + c) > 0$

B. $a(a + |b| + c) < 0$

C. $9a - 3b + c > 0$

D. $(9a - 3b + c)(4a + 2b + c) < 0$

Answer: B



Watch Video Solution

152. If α, β are the roots of the quadratic equation $x^2 + px + q = 0$ and γ, δ are the roots of $x^2 + px - r = 0$ then $(\alpha - \gamma)(\alpha - \delta)$ is equal to :

A. $q + r$

B. $q - r$

C. $-(q + r)$

D. $-(p + q + r)$

Answer: C



Watch Video Solution

153. The solution set of the equation

$$\log_{1/3}(2^{x+2} - 4^x) \geq -2, \text{ is}$$

- A. $(-\infty, 2)$
- B. $(-\infty, 2 + \sqrt{13})$
- C. $(2, \infty)$
- D. none of these

Answer: A



[Watch Video Solution](#)

Exercise One Or More Than One Answer Is Are Correct

1. If S is the set of all real x such that $\frac{2x - 1}{2x^3 + 3x^2 + x}$ is $\left(-\infty, -\frac{3}{2}\right)$

b. $\left(-\frac{3}{2}, \frac{1}{4}\right)$ c. $\left(-\frac{1}{4}, \frac{1}{2}\right)$ d. $\left(\frac{1}{2}, 3\right)$ e. None of these

A. $\left(-\infty, -\frac{3}{2}\right)$

B. $\left(-\frac{3}{2}, -\frac{1}{2}\right)$

C. $\left(-\frac{1}{2}, 0\right)$

D. $\left(\frac{1}{2}, 2\right)$

Answer: A::B::D



Watch Video Solution

2. If $kx^2 - 4x + 3k + 1 > 0$ for atleast one $x > 0$, then if $k \in S$ contains :

A. $(1, \infty)$

B. $(0, \infty)$

C. $(-1, \infty)$

D. $\left(-\frac{1}{4}, \infty\right)$

Answer: A::B::D



Watch Video Solution

3. Sum of integral roots of the equation $|x^2 - x - 6| = x + 2$ is

- A. two positive roots
- B. two real roots
- C. three real roots
- D. four real roots

Answer: A:C



[Watch Video Solution](#)

4. If the roots of the equation $x^2 - ax - b = 0 (a, b, \in R)$ are both lying between -2 and 2 , then :

- A. $|a| < 2 - \frac{b}{2}$
- B. $|a| > 2 - \frac{b}{2}$
- C. $|a| < 4$

D. $|a| > \frac{b}{2} - 2$

Answer: A::C::D



Watch Video Solution

5. Consider the equation is real number x and a real parameter λ , $|x - 1| - |x - 2| + |x - 4| = \lambda$ Then for $\lambda \geq 1$, the number of solutions, the equation can have is/are :

A. 1

B. 2

C. 3

D. 4

Answer: A::B::C::D



Watch Video Solution

6. If a and b are two distinct non-zero real numbers such that

$$a - b = \frac{a}{b} = \frac{1}{b} - \frac{1}{a}, \text{ then :}$$

A. $a > 0$

B. $a < 0$

C. $b < 0$

D. $b > 0$

Answer: A:C



[Watch Video Solution](#)

7.

Let

$$f(x) = ax^2 + bx + c, a > 0 \text{ and } f(2 - x) = f(2 + x) \forall x \in R \text{ and } f(x)$$

has 2 distinct real roots, then which of the following is true ?

A. Atleast one roots must be positive

B. $f(2) < f(0) > f(1)$

C. Vertex of graph of $y = f(x)$ is negative

D. Vertex of graph of $y = f(x)$ lies in 3rd quadrat

Answer: A::B::C



Watch Video Solution

8. In the above problem, if roots of equation $f(x) = 0$ are non-real complex, then which of the following is false ?

A. $f(x) = \sin \frac{\pi x}{4}$ must have 2 solutions

B. $4a - 2b + c < 0$

C. If $\log_{f(2)} f(3)$ is not defined, then $f(x) \geq 1 \forall x \in R$

D. All a,b,c are positive

Answer: A::B::D



View Text Solution

9. If exactly two integers lie between the roots of equation $x^2 + ax - 1 = 0$. Then integral value (s) of 'a' is/are :

A. -1

B. -2

C. 1

D. 2

Answer: A::C



[Watch Video Solution](#)

10. If the minimum value of the quadratic expression $y = ax^2 + bx + c$ is negative attained at negative value of x , then :

A. $a > 0$

B. $b > 0$

C. $c > 0$

D. $D > 0$

Answer: A::B::D



Watch Video Solution

11. The quadratic expression $ax^2 + bx + c > 0 \forall x \in R$, then :

A. $13a - 5b + 2c > 0$

B. $13a - b + 2c > 0$

C. $c > 0, D < 0$

D. $a + c > b, D < 0$

Answer: A::B::C::D



Watch Video Solution

12. The possible positive integral value of 'k' for which $5x^2 - 2kx + 1 < 0$ has exactly one integral solution may be divisible by :

- A. 2
- B. 3
- C. 5
- D. 7

Answer: A::C



[Watch Video Solution](#)

13. The coefficient of x in the equation $x^2 + px + q = 0$ was wrongly written as 17 in place of 13 and the roots thus found were -2 and -15. The roots of the correct equation are (A) 15, -2 (B) -3, -10 (C) -13, 30 (D) 4, 13

- A. -1

B. -3

C. -5

D. -10

Answer: B::D



Watch Video Solution

14. If x is real and $x^2 - 3x + 2 > 0$, $x^2 - 3x - 4 \leq 0$, then which one of the following is correct?

A. $|x| \leq 2$

B. $2 \leq x \leq 4$

C. $-1 \leq x \leq 1$

D. $2 < x \leq 4$

Answer: C::D



Watch Video Solution

15. If $5^x + (2\sqrt{3})^{2x} - 169 \leq 0$ is true for x lying in the interval :

A. $(-\infty, 2)$

B. $(0, 2)$

C. $(2, \infty)$

D. $(0, 4)$

Answer: A:B



[Watch Video Solution](#)

16. Let $f(x) = x^2 + ax + b$ and $g(x) = x^2 + cx + d$ be two quadratic polynomials with real coefficients and satisfy $ac = 2(b + d)$. Then which of the following is (are) correct ?

A. Exactly one of either $f(x) = 0$ or $g(x) = 0$ must have real roots.

B. Atleast one of either $f(x) = 0$ or $g(x) = 0$ must have real roots.

C. Both $f(x) = 0$ and $g(x) = 0$ must have real roots.

D. Both $f(x) = 0$ and $g(x) = 0$ must have imaginary roots.

Answer: B

 [Watch Video Solution](#)

17. The expression $\frac{1}{\sqrt{x+2\sqrt{x-1}}} + \frac{1}{\sqrt{x-2\sqrt{x-1}}}$ simplifies to:

A. $\frac{2}{3-x}$ if $1 < x < 2$

B. $\frac{2}{2-x}$ if $1 < x < 2$

C. $\frac{2\sqrt{x-1}}{(x-2)}$ if $x > 2$

D. $\frac{2\sqrt{x-1}}{(x+2)}$ if $x > 2$

Answer: B::C

 [Watch Video Solution](#)

18. if all values of x which satisfies the inequality $\log_{(1/3)}(x^2 + 2px + p^2 + 1) \geq 0$ also satisfy the inequality $kx^2 + kx - k^2 \leq 0$ for all real values of k , then all possible values of p lies in the interval :

A. $[-1, 1]$

B. $[0, 1]$

C. $[0, 2]$

D. $[-2, 0]$

Answer: A::B::C



[Watch Video Solution](#)

19. Which of the following statement(s) is/are correct ?

A. The number of quadratic equations having real roots which remain unchanged even after squaring their roots is 3.

- B. The number of solutions of the equation $\tan 2\theta + \tan 3\theta = 0$, in the interval $[0, \pi]$ is equal to 6.
- C. For $x_1, x_2, x_3 > 0$ the minimum values of $\frac{2x_1}{x_2} + \frac{128x_3^2}{x_2^2} + \frac{x_2^2}{4x_1x_3^2}$ equals 24.
- D. The locus of the mid-points of chords of the circle $x^2 + y^2 - 2x - 6y - 1 = 0$, which are passing through origin is $x^2 + y^2 - x - 3y = 0$.

Answer: A::B::D



[View Text Solution](#)

20. If $(a, 0)$ is a point on a diameter of the circle $x^2 + y^2 = 4$ then $x^2 - 4x - a^2 = 0$ has A) Exactly one real root in $(-1, 0]$ B) Exactly one real root in $[2, 5]$ C) Distinct roots greater than -1 D) Distinct roots less than 5

A. Exactly one real root in $[-1, 0]$

B. Exactly one real root in $[2, 5]$

C. Distinct roots greater than -1

D. Distinct roots less than 5

Answer: A::B::C::D



Watch Video Solution

21. Let $x^2 - px + q = 0$, where $p \in R, q \in R$ have the roots α, β such that $\alpha + 2\beta = 0$ then - (i) $2p^2 + q = 0$ (ii) $2q^2 + p = 0$ (iii) $q < 0$ (iv) none of these

A. $2p^2 + q = 0$

B. $2q^3 + p = 0$

C. $q < 0$

D. $q > 0$

Answer: A::C



Watch Video Solution

22. If a, b, c are rational numbers ($a > b > c > 0$) and quadratic equation $(a + b - 2c)x^2 + (b + c - 2a)x + (c + a - 2b) = 0$ has a root in the interval $(-1, 0)$ then which of the following statement (s) is/are correct ?

A. $a + c < 2b$

B. both roots are rational

C. $ax^2 + 2bx + c = 0$ have both roots negative

D. $cx^2 + 2bx + a = 0$ have both roots negative

Answer: A::B::C::D



Watch Video Solution

23. For the quadratic polynomial $f(x) = 4x^2 - 8ax + a$. the statements (s) which hold good is/are:

A. There is only one integral 'a' for which $f(x)$ is non-negative

$$\forall x \in \mathbb{R}$$

B. For $a < 0$, the number zero lies between the zeroes of the polynomial

C. $f(x) = 0$ has two distinct solutions in $(0, 1)$ for $a \in \left(\frac{1}{7}, \frac{4}{7}\right)$

D. The minimum value of $f(x)$ for minimum value of a for which $f(x)$ is non-negative $\forall x \in \mathbb{R}$ is 0

Answer: A::B::C::D



Watch Video Solution

24. Given a, b, c are three distinct real numbers satisfying the inequality

$a - 2b + 4c > 0$ and the equation $ax^2 + bx + c = 0$ has no real roots.

Then the possible value (s) of $\frac{4a + 2b + x}{a + 3b + 9c}$ is/are:

A. 2

B. -1

C. 3

D. $\sqrt{2}$

Answer: A::C::D



Watch Video Solution

25. Let $f(x) = x^2 - 4x + c \forall x \in R$, where c is a real constant, then which of the following is/are true ?

A. $f(0) > f(1) > f(2)$

B. $f(2) > f(3) > f(4)$

C. $f(1) < f(4) < f(-1)$

D. $f(0) = f(4) > f(3)$

Answer: A::C::D



Watch Video Solution

26. If $0 < a < b < c$ and the roots α, β of the equation $ax^2 + bx + c = 0$ are imaginary, then

A. $|\alpha| = |\beta|$

B. $|\alpha| > 1$

C. $|\alpha| < 1$

D. $|\alpha| = 1$

Answer: A:B

 [Watch Video Solution](#)

27. If satisfies $|x - 1| + |x - 2| + |x - 3| > 6$, then :

A. $x \in (-\infty, 1)$

B. $x \in (-\infty, 0)$

C. $x \in (4, \infty)$

D. $(2, \infty)$

Answer: B::C



Watch Video Solution

28. If both roots of the quadratic equation $ax^2 + x + b - a = 0$ are non real and $b > -1$, then which of the following is/are correct ?

A. $a > 0$

B. $a < b$

C. $3a > 2 + 4b$

D. $3a < 2 + 4b$

Answer: A::B



Watch Video Solution

29. If a, b are two numbers such that $a^2 + b^2 = 7$ and $a^3 + b^3 = 10$, then :

- A. The greatest value of $|a + b| = 5$
- B. The greatest value of $(a + b)$ is 4
- C. The least value of $|a + b|$ is 1
- D. The least value of $|a + b|$ is 1

Answer: A::B::C



[Watch Video Solution](#)

30. The number of non-negative integral ordered pair (s) (x, y) for which $(xy - 7)^2 = x^2 + y^2$ holds is greater than or equal to :

- A. 1
- B. 2
- C. 3

Answer: A::B::C::D



Watch Video Solution

31. If α, β, γ and δ are the roots of the equation $x^4 - bx - 3 = 0$, then an equation whose roots are $\frac{\alpha + \beta + \gamma}{\delta^2}, \frac{\alpha + \beta + \delta}{\gamma^2}, \frac{\alpha + \delta + \gamma}{\beta^2}$, and $\frac{\delta + \beta + \gamma}{\alpha^2}$, is:

A. $3x^4 + bx + 1 = 0$

B. $3x^4 - bx + 1 = 0$

C. $3x^4 + bx^3 - 1 = 0$

D. $3x^4 - bx^3 - 1 = 0$

Answer: D



Watch Video Solution

32. The value of 'k' for which roots of the equation $4x^2 - 2x + k = 0$ are completely in $(-1,1)$ may be equato

A. -1

B. 0

C. 2

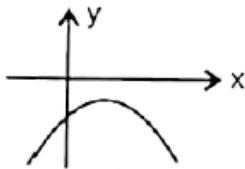
D. -3

Answer: A::B

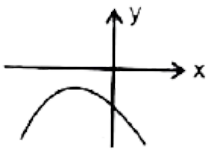


Watch Video Solution

33. If $a, b, c \in R$, then for which of the following graphs of the quadratic polynomial $y = ax^2 - 2bx + c$ ($a \neq 0$), the product (abc) is negative ?



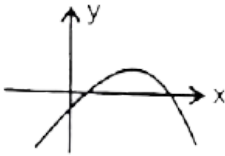
A.



B.



C.



D.

Answer: A::C::D

 [Watch Video Solution](#)

34. $a, b, c, \in R, a \neq 0$ and the quadratic equation $ax^2 + bx + c = 0$ has no real roots, then which one of the following is not true?

A. $(a + b + c)(a - b + c) > 0$

B. $(a + b + c)(a - 2b + 4c) > 0$

$$C. (a - b + c)(4a - 2b + c) > 0$$

$$D. a(b^2 - 4ac) > 0$$

Answer: A::B::D



Watch Video Solution

35. If α and β are the roots of the equation $ax^2 + bx + c = 0$, $a, b, c \in R$, $\alpha \neq 0$ then which is (are) correct:

$$A. \alpha^2 + \beta^2 = \frac{b^2 - 2ac}{c^2}$$

$$B. \frac{1}{\alpha^2} + \frac{1}{\beta^2} = \frac{b^2 - 2ac}{c^2}$$

$$C. \frac{1}{\alpha^3} + \frac{1}{\beta^3} = \frac{abc - b^3}{c^3}$$

$$D. \alpha\beta(\alpha + \beta) = \frac{-bc}{\alpha^2}$$

Answer: A::B::D



Watch Video Solution

36. The equation $\cos^2 x - \sin x + \lambda = 0$, $x \in (0, \pi/2)$ has roots then value(s) of λ can be equal to :

A. 0

B. $1/2$

C. -1

D. $1/2$

Answer: A:C



[Watch Video Solution](#)

37. If the equation $\ln(x^2 + 5x) - \ln(x + a + 3) = 0$ has exactly one solution for x , then possible integral value of a is:

A. -3

B. -1

C. 0

D. 2

Answer: B::C::D



Watch Video Solution

38. The number of non-negative integral ordered pair (s) (x, y) for which $(xy - 7)^2 = x^2 + y^2$ holds is greater then or equal to :

A. 1

B. 2

C. 3

D. 4

Answer: A::B::C::D



Watch Video Solution

39. If $a < 0$, then the value of x satisfying $x^2 - 2a|x - a| - 3a^2 = 0$ is/are

A. $a(1 - \sqrt{2})$

B. $a(1 + \sqrt{2})$

C. $a(-1 - \sqrt{6})$

D. $a(-1 + \sqrt{6})$

Answer: A:D



Watch Video Solution

40. If $0 < a < b < c$ and the roots α, β of the equation $ax^2 + bx + c = 0$ are imaginary, then

A. $|\alpha| = |\beta|$

B. $|\alpha| > 1$

C. $|\beta| < 1$

D. $|\alpha| = 1$

Answer: A::B



Watch Video Solution

41. Solve : $|x - 1| + |x - 2| + |x - 3| > 6$

A. $x \in (-\infty, 1)$

B. $x \in (-\infty, 0)$

C. $x \in (4, \infty)$

D. $(2, \infty)$

Answer: B::C



Watch Video Solution

42. The value of 'k' for which roots of the equation $4x^2 - 2x + k = 0$ are completely in $(-1,1)$ may be equato

A. -1

B. 0

C. 2

D. -3

Answer: A:B



Watch Video Solution

43. Let $\alpha, \beta, \gamma, \delta$ are roots of $x^4 - 12x^3 + \lambda x^2 - 54x + 14 = 0$ If

$\alpha + \beta = \gamma + \delta$, then

A. $\lambda = 45$

B. $\lambda = -45$

C. If $\alpha^2 + \beta^2 < \gamma^2, \delta^2$ then $\frac{\alpha\beta}{\gamma\delta} = \frac{7}{2}$

D. If $\alpha^2 + \beta^2 < \gamma^2 + \delta^2 = \frac{\alpha\beta}{\gamma\delta} = \frac{2}{7}$

Answer: A::C



Watch Video Solution

44. If the points $\left(\frac{a^3}{a-1}, \frac{a^2-3}{a-1}\right)$, $\left(\frac{b^3}{b-1}, \frac{b^3-3}{b-1}\right)$ and $\left(\frac{c^3}{c-1}, \frac{c^3-3}{c-1}\right)$ where

a, b, c are different from 1 lie on the line $lx + my + n = 0$

$$a + b + c = -\frac{m}{l} \quad ab + bc + ca + \frac{n}{l} = 0 \quad abc = \frac{(3m+n)}{l}$$

$$abc - (bc + ca + ab) + 3(a + b + c) = 0$$

A. $a + b + c = -\frac{m}{l}$

B. $abc = \frac{m + \pi}{l}$

C. $ab + bc + ca = \frac{n}{l}$

D. $abc - (ab + bc + ca) + 3(a + b + c) = 0$

Answer: A::C::D



Watch Video Solution

Exercise Comprehension Type Problems

1. Let $f(x) = ax^2 + bx + c$, $a \neq 0$, such that the $f(-1-x) = f(-1+x) \forall x \in R$. Also given that $f(x) = 0$ has no real roots and $4a + b > 0$.

Let $\alpha = 4a - 2b + c$, $\beta = 9a + 3b + c$, $\gamma = 9a - 3b + c$, then which of the following is correct ?

A. $\beta < \alpha < \gamma$

B. $\gamma < \alpha < \beta$

C. $\alpha < \gamma < \beta$

D. $\alpha < \beta < \gamma$

Answer: C



Watch Video Solution

2. Let $f(x) = ax^2 + bx + c, a \neq 0,$ such the $f(-1-x) = f(-1+x) \forall x \in R.$ Also given that $f(x) = 0$ has no real roots and $4a + b > 0.$

Let $p = b - 4a, q = 2a + b,$ then pq is:

- A. negative
- B. positive
- C. 0
- D. nothing can be said

Answer: A

 [Watch Video Solution](#)

3. If α, β the roots of equation $(k + 1)x^2 - (20k + 14)x + 91k + 40 = 0, (\alpha < \beta)k < 0,$ then answer the following questions.

The smaller root (α) lie in the interval :

A. (4, 7)

B. (7, 10)

C. (10, 13)

D. None of these

Answer: A



Watch Video Solution

4. If α, β the roots of equation $(k + 1)x^2 - (20k + 14)x + 91k + 40 = 0$, $(\alpha < \beta)k < 0$, then answer the following questions.

The larger root (β) lie in the interval :

A. (4, 7)

B. (7, 10)

C. (10, 13)

D. None of these

Answer: c



Watch Video Solution

5. Let $f(x) = x^2 + bx + c \forall x \in R, (b, c, \in R)$ attains its least value at $x = -$ and the graph of $f(x)$ cuts y-axis at $y = 2$.

The least valur of $f(9x) \forall x \in R$ is :

A. -1

B. 0

C. 1

D. $3/2$

Answer: C



Watch Video Solution

6. Let $f(x) = x^2 + bx + c \forall x \in R, (b, c, \in R)$ attains its least value at $x = -1$ and the graph of $f(x)$ cuts y-axis at $y = 2$.

The value of $f(-2) + f(0) + f(1) =$

A. 3

B. 5

C. 7

D. 9

Answer: D



[Watch Video Solution](#)

7. Let $f(x) = x^2 + bx + c \forall x \in R, (b, c, \in R)$ attains its least value at $x = -1$ and the graph of $f(x)$ cuts y-axis at $y = 2$. If $f(x) = a$ has two distinct real roots, then complete set of values of a is :

A. $(1, \infty)$

B. $(-2, -1)$

C. $(0, 1)$

D. $(1, 2)$

Answer: A



Watch Video Solution

8. Consider the equation $\log_2^2 x - x - 4\log_2 x - m^2 - 2m - 13 = 0, m \in \mathbb{R}$. Let the real roots of the equation be x_1, x_2 , such that $x_1 < x_2$. The set of all values of m for which the equation has real roots is

(i) $(-\infty, 0)$ (ii) $(0, \infty)$ (iii) $[1, \infty)$ (iv) $(-\infty, \infty)$

A. $(-\infty, 0)$

B. $(0, \infty)$

C. $[1, \infty)$

D. $(-\infty, \infty)$

Answer: D



Watch Video Solution

9. Consider the equation $\log_2^2 x - 4\log_2 x - m^2 - 2m - 13 = 0, m \in R$. Let the real roots of the equation be x_1, x_2 such that $x_1 < x_2$.

The sum of maximum value of x_1 and minimum value of x_2 is :

A. $\frac{513}{8}$

B. $\frac{513}{4}$

C. $\frac{1025}{8}$

D. $\frac{257}{4}$

Answer: D



Watch Video Solution

10. The equation $x^4 - 2x^3 - 3x^2 + 4x - 1 = 0$ has four distinct real roots x_1, x_2, x_3, x_4 such that $x_1 < x_2 < x_3 < x_4$ and product of two roots is unity, then : $x_1x_2 + x_1x_3 + x_2x_4 + x_3x_4 =$

A. 0

B. 1

C. $\sqrt{5}$

D. -1

Answer: B



[Watch Video Solution](#)

11. The equation $x^4 - 2x^3 - 3x^2 + 4x - 1 = 0$ has four distinct real roots x_1, x_2, x_3, x_4 such that $x_1 < x_2 < x_3 < x_4$ and product of two roots is unity, then : $x_2^3 + x_4^3 =$

A. $\frac{2 + 5\sqrt{5}}{8}$

B. -4

C. $\frac{27\sqrt{5} + 5}{4}$

D. 18

Answer: D



Watch Video Solution

12. Let $f(x)$ polynomial of degree 5 with leading coefficient unity such that $f(1)=5, f(2)=4, f(3)=3, f(4)=2, f(5)=1$, then $f(6)$ is equal to

A. 120

B. -120

C. 0

D. 6

Answer: A



Watch Video Solution

13. IF THE MINIMUM VALUE OF AN OBJECTIVE FUNCTION $Z=ax+by$ occurs at two point(3,4) and 4,3

A. 15

B. - 15

C. 21

D. can't be determine

Answer: A



[Watch Video Solution](#)

14. Let $f(x)$ be a polynomial of degree 5 with leading coefficient unity, such that $f(1) = 5$, $f(2) = 4$, $f(3) = 3$, $f(4) = 2$ and $f(5) = 1$, then :

Product of the roots of $f(x)$ is equal to :

A. 120

B. -120

C. 114

D. -114

Answer: A



Watch Video Solution

15. Consider the cubic equation in

$$x, x^3 - x^2 + (x - x^2)\sin\theta + (x - x^2)\cos\theta + (x - 1)\sin\theta\cos\theta = 0$$

whose roots are α, β, γ .

The value of $\left(\frac{\alpha}{2}\right)^2 + \left(\frac{\beta}{2}\right)^2 + \left(\frac{\gamma}{2}\right)^2 =$

A. 1

B. $\frac{1}{2}$

C. $2\cos\theta$

D. $\frac{1}{2}(\sin\theta + \cos\theta + \sin\theta\cos\theta)$

Answer: B



[Watch Video Solution](#)

16. Consider the cubic equation in

$$x, x^3 - x^2 + (x - x^2)\sin\theta + (x - x^2)\cos\theta + (x - 1)\sin\theta\cos\theta = 0$$

whose roots are α, β, γ .

Number of value of θ in $[0, 2\pi]$ for which at least two roots are equal, is :

A. 2

B. 3

C. 4

D. 5

Answer: D



[Watch Video Solution](#)

17. Let $P(x)$ be a quadratic polynomial with real coefficients such that for all real x the relation $2(1 + P(x)) = P(x - 1) + P(x + 1)$ holds. If $P(0) = 8$ and $P(2) = 32$, then Sum of all the coefficients of $P(x)$ is:

A. 20

B. 19

C. 17

D. 15

Answer: B



[Watch Video Solution](#)

18. Let $P(x)$ be quadratic polynomial with real coefficient such tht for all real $x(1)$ the relation $2(1 + P(x)) = P(x - 1) + P(x + 1)$ holds. If $P(0) = 8$ and $P(2) = 32$ then

If the range of $P(x)$ is $[m, \infty)$ then 'm' is less then

A. -12

B. 15

C. -17

D. -5

Answer: C

 [Watch Video Solution](#)

19. Let t be a real number satisfying $2t^3 - 9t^2 + 30 - \lambda = 0$ where $t = x + \frac{1}{x}$ and $\lambda \in R$. If the above cubic has three real and distinct solutions for x then exhaustive set of value of λ be :

A. $3 < \lambda < 10$

B. $3 < \lambda < 30$

C. $\lambda = 10$

D. None of these

Answer: C



Watch Video Solution

20. Let t be a real number satisfying $2t^3 - 9t^2 + 30 - \lambda = 0$ where $t = x + \frac{1}{x}$ and $\lambda \in R$.

if the cubic has exactly two real and distinct solutions for x then exhaustive set of values of λ be:

- A. $\lambda \in (-\infty, 3) \cup (30, \infty)$
- B. $\lambda \in (-\infty, -22) \cup (10, \infty) \cup \{3\}$
- C. $\lambda \in \{3, 30\}$
- D. None of these

Answer: B



Watch Video Solution

21. Let t be a real number satisfying $2t^3 - 9t^2 + 30 - \lambda = 0$ where $t = x + \frac{1}{x}$ and $\lambda \in R$.

If the cubic has four real and distinct solutions for x then exhaustive set of values of λ be :

A. $\lambda \in (3, 10)$

B. $\lambda \in \{3, 10\}$

C. $\lambda \in (-\infty, -22) \cup (10, \infty)$

D. None of these

Answer: A



[View Text Solution](#)

22. Consider a quadratic expression $f(x) = tx^2 - (2t - 1)x + (5x - 1)$
If $f(x)$ can take both positive and negative values then t must lie in the interval

A. $\left(\frac{-1}{4}, \frac{1}{4}\right)$

B. $\left(-\infty, \frac{-1}{4}\right) \cup \left(\frac{1}{4}\right)$

C. $\left(\frac{1}{4}\right) = \{0\}$

D. $(-4, 4)$

Answer: C



Watch Video Solution

23. Consider a quadratic expression $f(x) = tx^2 - (2t - 1)x + (5x - 1)$

If $f(x)$ is non-negative $\forall x \geq 0$ then t lies in the interval

A. $\left[\frac{1}{5}, \frac{1}{4}\right]$

B. $\left[\frac{1}{4}, \infty\right)$

C. $\left[\frac{1}{4}, \frac{1}{4}\right]$

D. $\left[\frac{1}{5}, \infty\right)$

Answer: D

 Watch Video Solution

Exercise Matching Type Problems

(A) The real root(s) of the equation $x^4 - 8x^2 - 9 = 0$ are	(P)	No real roots
(B) The real root(s) of the equation $x^{2/3} + x^{1/3} - 2 = 0$ are	(Q)	-3, 3
(C) The real root(s) of the equation $\sqrt{3x+1} + 1 = \sqrt{x}$ are	(R)	-8, 1

1.

 Watch Video Solution

Exercise Subjective Type Problems

1. Let $f(x) = ax^2 + bx + c$ where a, b, c are integers. If $\sin \frac{\pi}{7} \cdot \sin \frac{3\pi}{7} + \sin \frac{3\pi}{7} \cdot \sin \frac{5\pi}{7} + \sin \frac{5\pi}{7} \cdot \sin \frac{\pi}{7} = f\left(\cos \frac{\pi}{7}\right)$, then find the value of $f(2)$:

 Watch Video Solution

2. Let a, b, c, d be distinct integers such that the equation $(x - a)(x - b)(x - c)(x - d) - 9 = 0$ has an integer root 'r', then the value of $a + b + c + d - 4r$ is equal to :

 [Watch Video Solution](#)

3. Consider the equation $(x^2 + x + 1)^2 - (m - 3)(x^2 + x + 1) + m = 0$, where m is a real parameter. The number of positive integral values of m for which equation has two distinct real roots, is:

 [View Text Solution](#)

4. The number of positive integral values of $m, m \leq 16$ for which the equation $(x^2 + x + 1)^2 - (m - 3)(x^2 + x + 1) + m = 0$, has 4 distinct real root is:

 [Watch Video Solution](#)

5. If the equation $(m^2 - 12)x^4 - 8x^2 - 4 = 0$ has no real roots, then the largest value of m is $p\sqrt{q}$ where p, q are coprime natural numbers, then $p + q =$



[Watch Video Solution](#)

6. The least positive integral value of 'x' satisfying $(e^x - 2)\left(\sin\left(x + \frac{\pi}{4}\right)\right)(x - \log_e 2)(\sin x - \cos x) < 0$



[Watch Video Solution](#)

7. The integral values of x for which $x^2 + 17x + 71$ is perfect square of a rational number are a and b , then $|a - b| =$



[Watch Video Solution](#)

8. Let $p(x) = x^6 - x^5 - x^3 - x^2 - x$ and $\alpha, \beta, \gamma, \delta$ are the roots of the equation $x^4 - x^3 - x^2 - 1 = 0$ then $P(\alpha) + P(\beta) + P(\gamma) + P(\delta) =$

 [Watch Video Solution](#)

9. The number of real values of 'a' for which the largest value of the function $f(x) = x^2 + ax + 2$ in the interval $[-2, 4]$ is 6 will be :

 [Watch Video Solution](#)

10. The number of all values of n , (where n is a whole number) for which the equation $\frac{x - 8}{n - 10} = \frac{n}{x}$ has no solution.

 [Watch Video Solution](#)

11. The number of negative integral values of m for which the expression $x^2 + 2(m - 1)x + m + 5$ is positive $\forall x > 1$ is:



Watch Video Solution

12. If the expression $ax^4 + bx^3 - x^2 + 2x + 3$ has remainder $4x + 3$ when divided by $x^2 + x - 2$, find the value of a and b .



Watch Video Solution

13. The smallest value of k , for which both the roots of the equation, $x^2 - 8kx + 16(k^2 - k + 1) = 0$ are real, distinct and have values at least 4, is



Watch Video Solution

14. If $(x^2 - 3x + 2)$ is a factor of $x^4 - px^2 + q = 0$, then the values of p and q are



Watch Video Solution

15. The expression $x^2 + 2xy + ky^2 + 2x + k = 0$ can be resolved into two linear factors, then $k \in$

 [Watch Video Solution](#)

16. The curve $y = (\lambda - 1)x^2 + 2$ intersects the curve $y = \lambda x + 3$ in exactly one point, if λ equals { - 2, 2} b. {1} c. { - 2} d. {2}

 [Watch Video Solution](#)

17. Find the number of integral values of 'a' for which the range of function

$$f(x) = \frac{x^2 - ax + 1}{x^2 - 3x + 2} \text{ is } (-\infty, \infty),$$

 [Watch Video Solution](#)

18. When x^{100} is divided by $x^2 - 3x + 2$, the remainder is $(2^{k+1} - 1)x - 2(2^k - 1)$, then $k =$

 [Watch Video Solution](#)

19. Let $p(x)$ be a polynomial equation of least possible degree, with rational coefficients, having $\sqrt[3]{7} + \sqrt[3]{49}$ as one of its roots. Then the product of all the roots of $p(x) = 0$ is:

 [Watch Video Solution](#)

20. The range of values k for which the equation $2\cos^4 x - \sin^4 x + k = 0$ has at least one solution is $[\lambda, \mu]$. Find the value of $(9\mu + \delta)$.

 [Watch Video Solution](#)

21. Let $p(x)$ be a polynomial with real coefficient and $p(x) = p'(x) = x^2 + 2x + 1$. Find $P(1)$.

 [Watch Video Solution](#)

22. Find the smallest positive integral value of a for which the greater root of the equation $x^2 - (a^2 + a + 1)x + a(a^2 + 1) = 0$ lies between the roots of the equation $x^2 - a^2x - 2(a^2 - 2) = 0$

 [Watch Video Solution](#)

23. If the equation $x^4 + kx^2 + k = 0$ has exactly two distinct real roots, then the smallest integral value of $|k|$ is:

 [Watch Video Solution](#)

24. Let $p(x) = x^6 - x^5 - x^3 - x^2 - x$ and $\alpha, \beta, \gamma, \delta$ are the roots of the equation $x^4 - x^3 - x^2 - 1 = 0$ then $P(\alpha) + P(\beta) + P(\gamma) + P(\delta) =$

 [Watch Video Solution](#)

25. The number of integral value of $a, a, \in [-5, 5]$ for which the equation: $x^2 + 2(a - 1)x + a + 5 = 0$ has one root smaller than 1 and

the other root greater than 3 is :

 [Watch Video Solution](#)

26. The number of non-negative integral values of $n, n \leq 10$ so that a root of the equation $n^2 \sin^2 x - 2 \sin x - (2n + 1) = 0$ lies in interval $\left[0, \frac{\pi}{2}\right]$ is:

 [Watch Video Solution](#)

27. Let $f(x) = ax^2 + bx + c$, where a, b, c are integers and $a > 1$. If $f(x)$ takes the value $p, a' f$ or two distinct $\int e \geq r$ values of x , then the number of $f(x)$ takes the value $2p$ is :

 [Watch Video Solution](#)

28. If x and y are real numbers connected by the equation $9x^2 + 2xy + y^2 - 92x - 20y + 244 = 0$, then the sum of maximum

value of x and the minimum value of y is :

 [Watch Video Solution](#)

29. Consider two numbers a, b , sum of which is 3 and the sum of their cubes is 7. Then sum of all possible distinct values of a is :

 [Watch Video Solution](#)

30. If $y^2(y^2 - 6) + x^2 - 8x + 24 = 0$ and the minimum value of $x^2 + y^4$ is m and maximum value is M , then find the value of $M - 2m$.

 [Watch Video Solution](#)

31. Consider the equation $x^3 - ax^2 + bx - c = 0$, where a, b, c are rational number, $a \neq 1$. It is given that x_1, x_2 and x_1x_2 are the real roots of the equation. Then $x_1x_2 \left(\frac{a+1}{b+c} \right) =$

 [Watch Video Solution](#)

32. Let α satisfy the equation $x^3 + 3x^2 + 4x + 5 = 0$ and β satisfy the equation $x^3 - 3x^2 + 4x - 5 = 0$, $\alpha, \beta \in R$, then $\alpha + \beta =$

 [Watch Video Solution](#)

33. Let x, y and z are positive reals and $x^2 + xy + y^2 = 2$, $y^2 + yz + z^2 = 1$ and $z^2 + zx + x^2 = 3$. If the value of $xy + zx$ can be expressed as $\sqrt{\frac{p}{q}}$ where p and q are relatively prime positive integral find the value of $p - q$,

 [View Text Solution](#)

34. The number of ordered pairs (a, b) where a, b are integers satisfying the inequality $\min(x^2 + (a - b)x + (1 - a - b)) > \max(-x^2 + (a + b)x - (1 + a + b))$ is :

 [View Text Solution](#)

 [Watch Video Solution](#)

35. The real value of x satisfying ${}^3\sqrt{20x + {}^3\sqrt{20x + 13}} = 13$ can be expressed as $\frac{a}{b}$ where a and b are relatively prime positive integers. Find the value of b ?

 [Watch Video Solution](#)

36. If the range of the values of a for which the roots of the equation $x^2 - 2x - a^2 + 1 = 0$ lie between the roots of the equation $x^2 - 2(a + 1)x + a(a - 1) = 0$ is (p, q) , then find the value of $\left(q - \frac{1}{p}\right)$.

 [Watch Video Solution](#)

37. Find the number of positive integers satisfying the inequality $x^2 - 10x + 16 < 0$.

 [Watch Video Solution](#)

38. If $\sin \theta$ and $\cos \theta$ are the roots of the quadratic equation $ax^2 + bx + c = 0$ ($ax \neq 0$). Then find the value of $\frac{b^2 - a^2}{ac}$.

 [Watch Video Solution](#)

39. Let the inequality $\sin^2 x + a \cos x + a^2 \geq 1 + \cos x$ is satisfied $\forall x \in R$, for $a \in (-\infty, k_1] \cup [k_2, \infty)$, then $|k_1| + |k_2| =$

 [Watch Video Solution](#)

40. α and β are roots of the equation $2x^2 - 35x + 2 = 0$. Find the value of $\sqrt{(2\alpha - 35)^3(2\beta - 35)^2}$

 [Watch Video Solution](#)

41. The sum of all integral values of 'a' for which the equation $2x^2 - (1 + 2a)x + 1 + a = 0$ has an integral root.

 [Watch Video Solution](#)

42. Let $f(x)$ be a polynomial of degree 8 such that $F(r) = \frac{1}{r}, r = 1, 2, 3, \dots, 8, 9$, then $\frac{1}{F(10)} =$

 [Watch Video Solution](#)

43. Let α, β are two real roots of equation $x^2 + px + q = 0, p, q, \in R, q \neq 0$. If the quadratic equation $g(x) = 0$ has two roots $\alpha + \frac{1}{\alpha}, \beta + \frac{1}{\beta}$ such that sum of its roots is equal to product of roots, then number of integral values g can attain is :

 [View Text Solution](#)

44. If $\cos A, \cos B$ and $\cos C$ are the roots of the cubic $x^3 + ax^2 + bx + c = 0$ where A, B, C are the angles of a triangle then find the value of $a^2 - 2b - 2c$.



[Watch Video Solution](#)

45. Find the number of positive integral values of k for which $kx^2 + (k - 3)x + 1 < 0$ for at least one positive x .



[Watch Video Solution](#)