



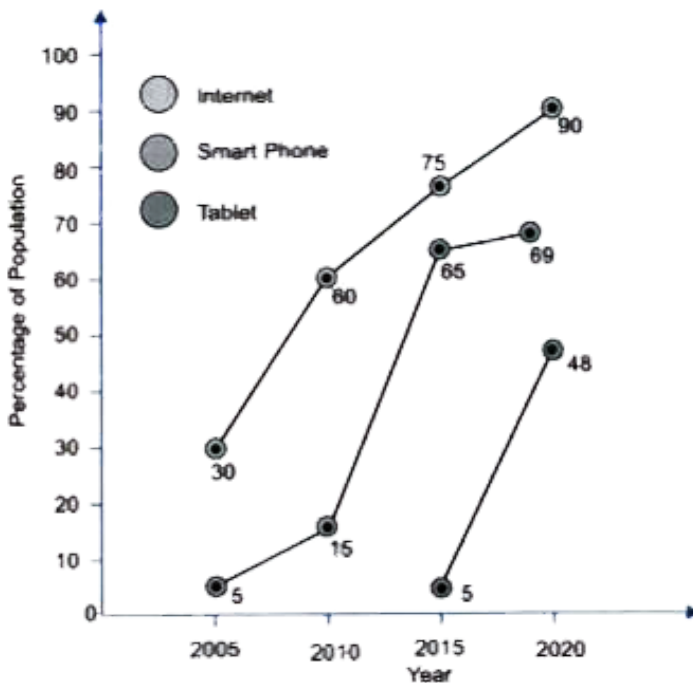
**ENGLISH**

**BOOKS - FULL MARKS ENGLISH  
(HINGLISH)**

**COMPOSITION - II (WRITING  
ANALYTICAL PARAGRAPH ON  
MAP/CHART/REPORT/ LINE GRAPH)**

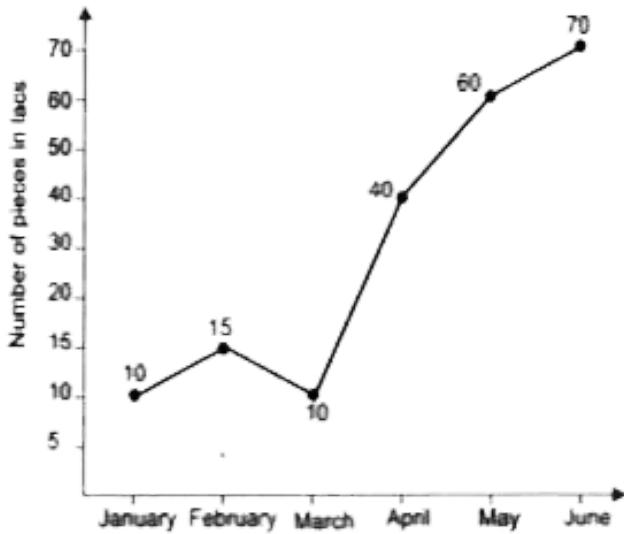
**Question Based On Line Graph**

1. The graph shows the recent technological revolution in India in recent years. Summarises the information by selecting and reporting the main features. Make comparisons where necessary.



2. The line-graph chart given below breaks down the sales history of the famous Lifebuoy brand in soap in the first six months of the year, from January to June. Write an analytic paragraph in 150–200 words after selecting and reporting the main features. Make

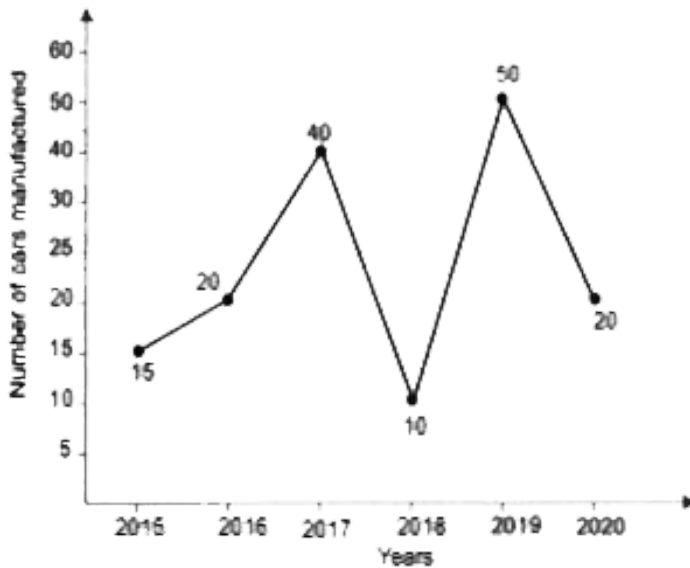
comparisons where necessary.



[View Text Solution](#)

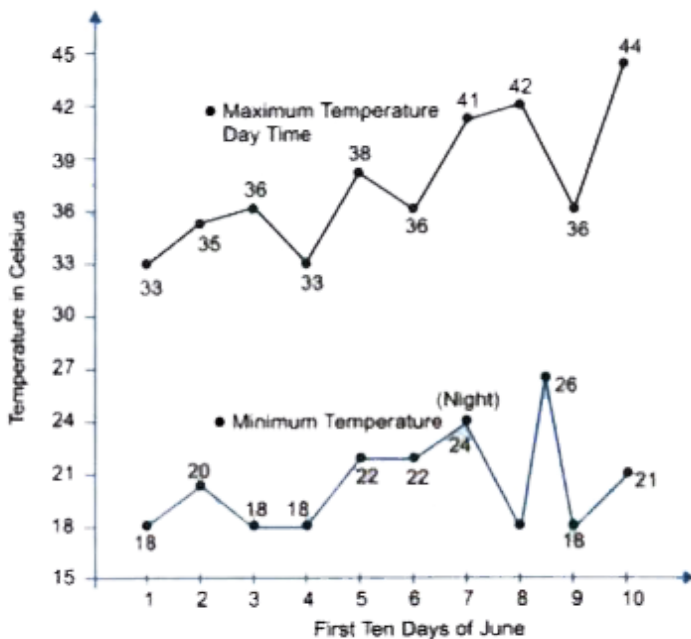
**3.** The line graph given below breaks down the number of cars produced in Standard Automobile Company from 2015 to 2020.

Summarise the information by selecting and reporting the main features. Make comparisons where necessary.



[View Text Solution](#)

4. The line graph given above illustrates the maximum and minimum temperatures in the first ten days of June. Summarise the information by selecting and reporting the main features. Make comparisons where necessary.

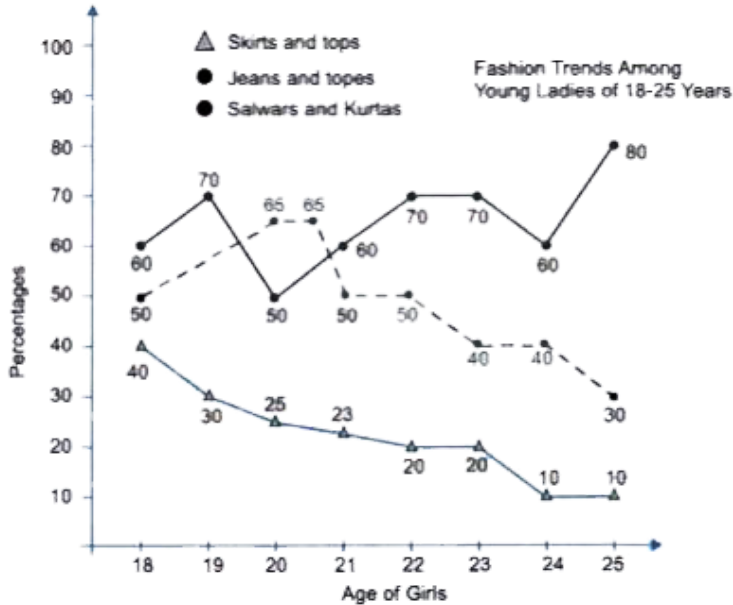




[View Text Solution](#)

5. The line graph shown below illustrates the main trends in garments of young ladies of 18 to 25 years. Summarise and write an analytic paragraph in your own words highlighting the main features and details. Compare wherever

relevant.

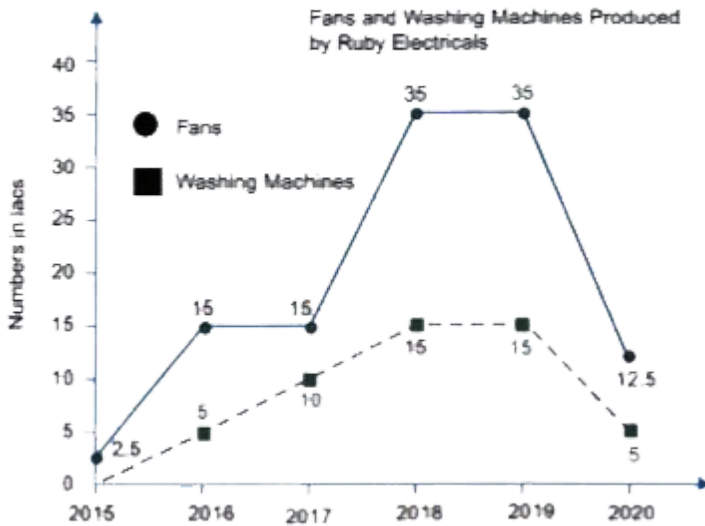


[View Text Solution](#)

6. The line graph given below shows the number of Fans and Washing Machines produced by Ruby Electricals between 2015



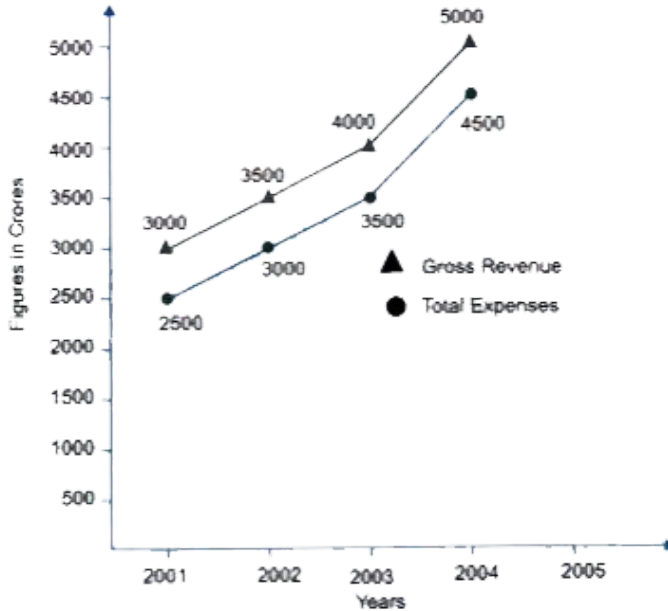
and 2020. Summarise and write an analytic paragraph highlighting the main trends and the necessary details. Compare wherever relevant.



[View Text Solution](#)

7. The Line graph given below represents Railway Finance from 2001-2002 to 2004-2005 (Northern Zone). It breaks down the gross revenue collected as well as the total expenses incurred during these years. Summarise and write an analytic paragraph highlighting the general trend and necessary details. Compare

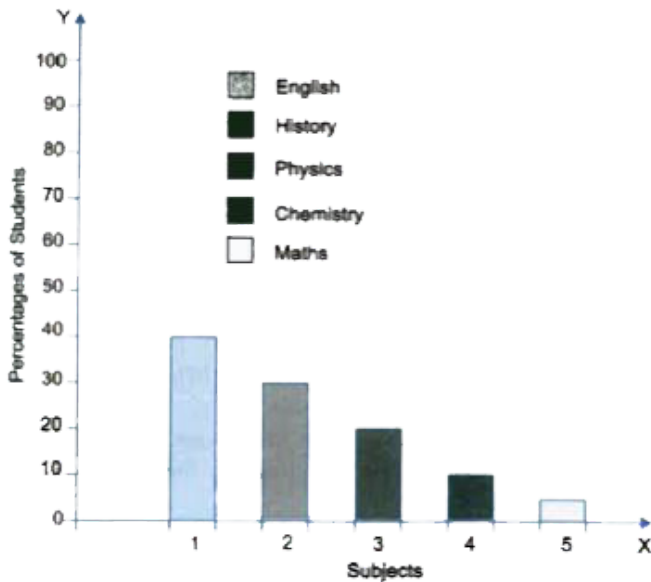
wherever relevant.



[View Text Solution](#)

**Making A Bar Graph Chart**

1. Make a bar chart of a class where students show their preference for different subjects. Forty percent prefer English, 30 percent prefer History, 15 percent prefer Physics, 10 percent. Chemistry and only 5 percent show their preference for Maths.





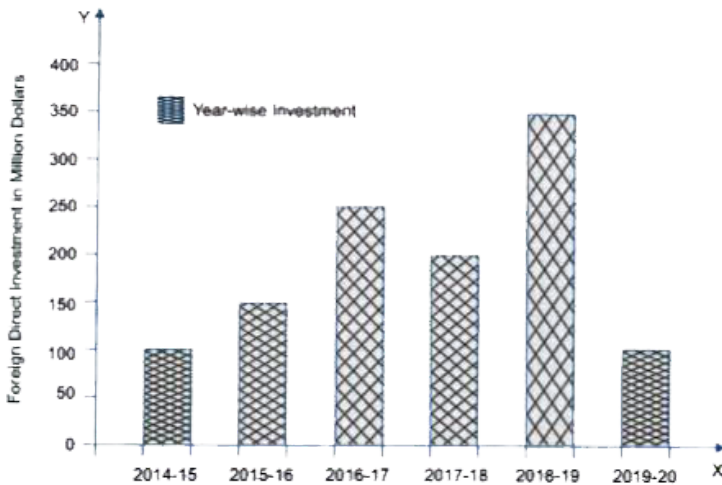
[View Text Solution](#)

2. Given above is the bar graph that represents the Total Sales Turnover of four major corporate giants of India. The figures shown record the total sales turnover in 3rd Quarter (September to December) and 4th Quarter (January to March). Summarise and write an analytic paragraph highlighting the general features and necessary details. Compare where you feel relevant.



[View Text Solution](#)

3. The bar chart given below illustrates the total Foreign Direct Investment (FDI) into India from all over the world. Summarise and write an analytic paragraph selecting the main features and giving all the necessary details. Compare where you find it relevant.

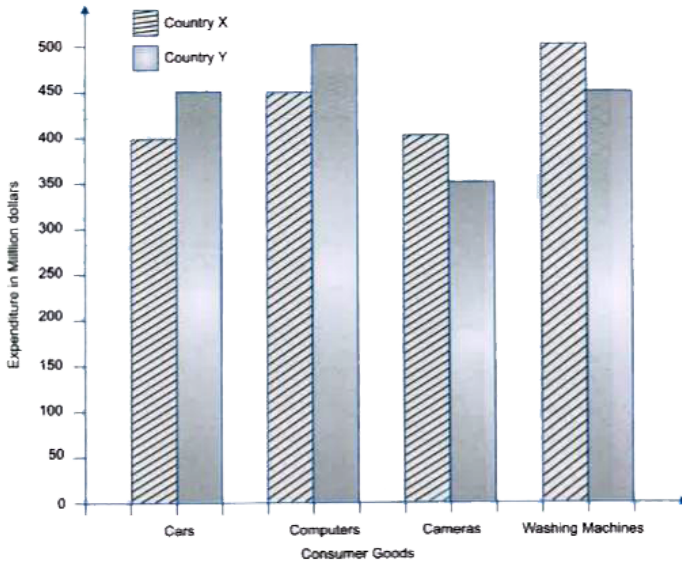




4. The chart below shows the expenditure of two countries X and Y on consumer goods in 2020 in US million dollars.

Summarise and write an analytic paragraph highlighting main features and necessary details in 150-200 words. Compare where

relevant.

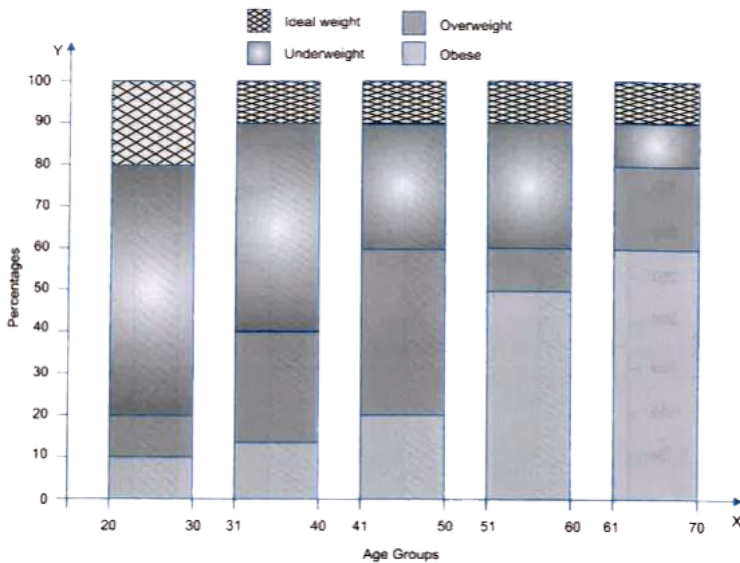


[View Text Solution](#)

5. The chart given below illustrates the weight measurements of people in the United States of America in 2020. Summarise the



information in an analytic paragraph of 150-200 words by selecting and reporting the main features. Make comparisons where relevant.



[View Text Solution](#)

6. The Bar graph given above illustrates the popular games and sports that are played in India and Pakistan. Summarise by writing an analytic paragraph (150-200 words) selecting the main features and details. Compare wherever relevant.



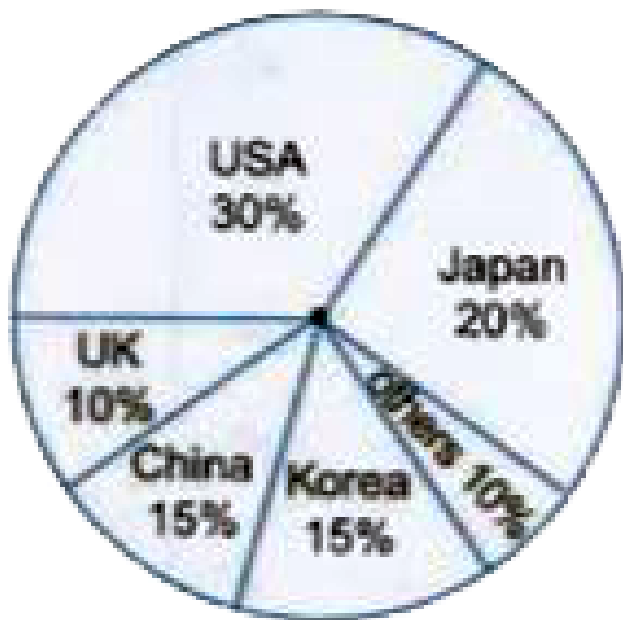
[View Text Solution](#)

**Pie Charts**

1. The following pie chart shows the foreign Direct Investment in India during 2019-2020.

Write an analytic paragraph showing the general trends and the necessary details.

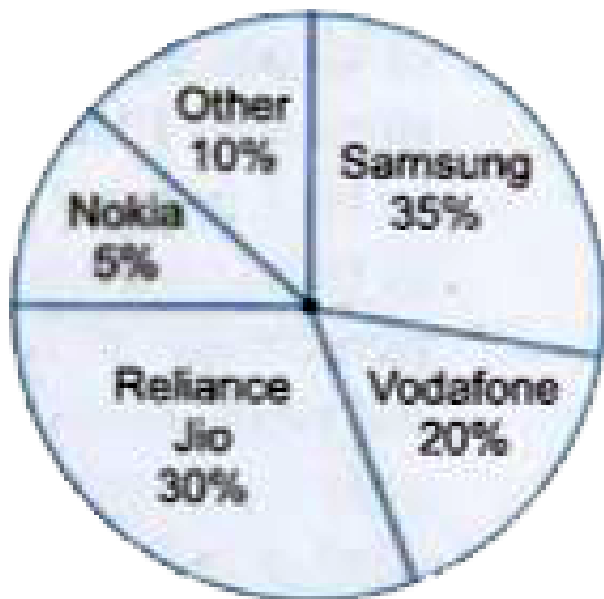
Compare the segments where relevant.



[View Text Solution](#)

2. The pie chart given below represents the sales of mobile phones of the leading companies of the world in India. Summarise and analyse the chart in your own language in about 150-200 words. Give all necessary details

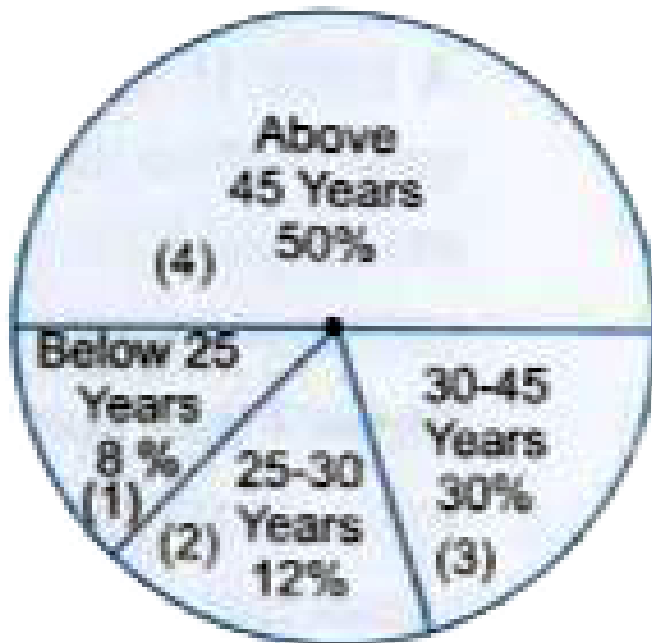
and compare the segments where relevant.



[View Text Solution](#)

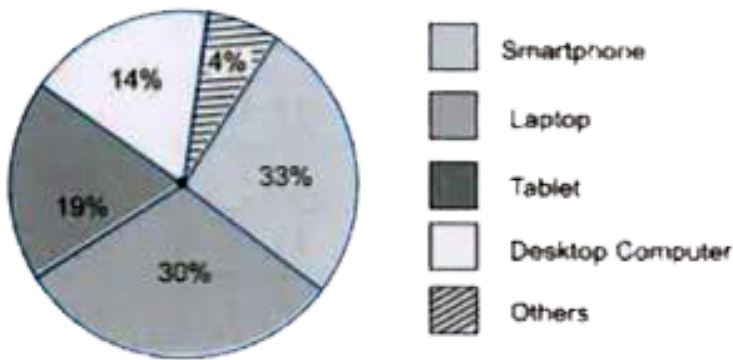
3. The following pie chart represents the distribution of the overseas tourists and their

age profile respectively. Study the chart carefully and write an analytic paragraph (150-200 words) giving the general trends and other necessary details. Don' forget to compare the segments where relevant.



 [View Text Solution](#)

4. The pie-chart given below illustrates how internet users of aged 17+ prefer to browse the web. Summarise by writing an analytic paragraph in 150-200 words given necessary details and the general trend. Compare where relevant.



[View Text Solution](#)

# Numerical Tables

Cities	Kanpur	Mumbai	Kolkata	Delhi	Lucknow
Kanpur	—	22	15	13	7
Mumbai	22	—	25	28	20
Kolkata	15	25	—	18	15
Delhi	13	28	28	—	15
Lucknow	7	15	15	15	—

1.

Read the table given above that describes postal charges among five main cities of India, Kanpur, Mumbai, Kolkata, Delhi and Lucknow. Write a critical and analytic description in a paragraph of 150-200 words. Compare and contrast them wherever possible.



[View Text Solution](#)



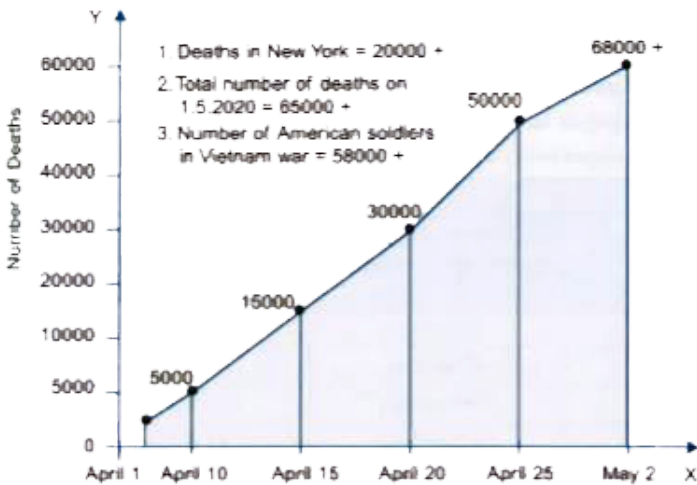
2. The table below gives information about some of the world's most studied languages. Give an analytic description in a paragraph highlighting and reporting the main features. Don't forget to make comparisons where relevant.

Language	A	B	
	Number of people learning the language	Number of native speakers	Number of countries where language is spoken
English	1.5 billion	527 million	101
French	82 million	118 million	51
Chinese	230 million	1.39 billion	33
Spanish	14.5 million	389 million	31
Italian	8 million	67 million	29
Japanese	3 million	123 million	25
Hindi	120 million	637.9 million	23



[View Text Solution](#)

3. In the graph given below we get a shocking picture of deaths in the USA due to Corona Virus that showed a constant upward trend in the month of April 2020. Write an analytic paragraph describing the general trend and other details after analysing the graph.



[View Text Solution](#)

4. Write an analytic paragraph on the number of Corona Virus (COVID-19) cases across Indian states (as on May 1), 2020. Compare and contrast where relevant (first ten).

States	Confirmed	Recovered	Deaths
Maharashtra	10,498	1,773	459
Gujarat	4,395	613	214
Delhi	3,515	1,094	59
Madhya Pradesh	2,660	482	137
Rajasthan	2,584	836	58
Tamil Nadu	2,323	1,258	27
Andhra Pradesh	1,403	321	31
Uttar Pradesh	2,203	1,258	27
Telangana	1,038	397	26
West Bengal	795	139	33



[View Text Solution](#)

5. The given table records the number of employees working in Golden Automobiles in

various departments from 2015 to 2019. Give an analytic description of the table in your own words. Also give necessary comparisons and contrasts wherever possible.

Years	Departments and Number of Employees			
	Production	Sales	Corporate	Accounts
2015	1500	250	500	450
2016	2250	400	450	620
2017	4500	650	300	900
2018	5000	800	350	1230
2019	5050	750	360	1300



[View Text Solution](#)

**Analytic Study Of Reports**

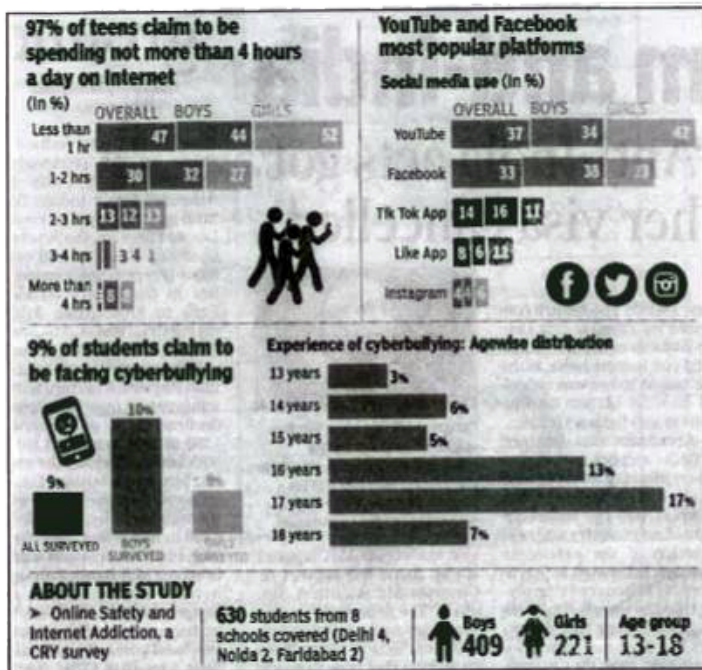
1. The given report presented by Times News Network illustrates the average salaries of India Inc. to its employees for 2020. Summarise by writing an analytic paragraph (150-200 words) highlighting the main features and details. Compare wherever relevant.

**India Inc to give ave hike of 9%: Survey**  
Lower Than Last Yr, But 39% Cos To See Double-Digit Rise



2. A CRY survey about Online safety and Internet Addiction involving 630 students from 8 school illustrates the number of hours teens, both boys and girls, spend on Internet and their liking for social media use. Another issue highlighted by the report is that of 'Cyberbullying. Summarise and write an analytic paragraph presenting the general trend and other details. Compare wherever it

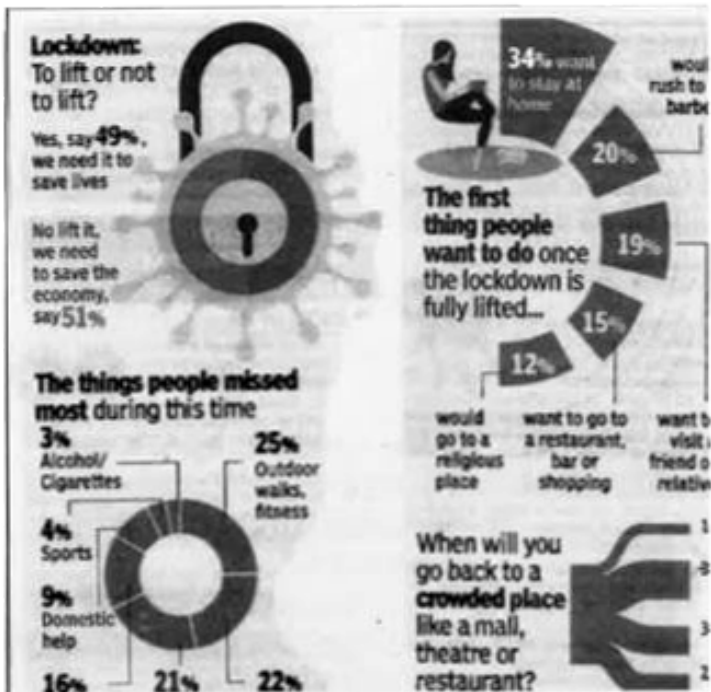
is relevant.



[View Text Solution](#)

3. The survey conducted by TOI involving 11000 respondents what people think about the

lockdowns and the first things they would do if they are lifted. Summarise and write an analytic paragraph highlighting the general trends and other necessary details. Compare wherever relevant.



 [View Text Solution](#)

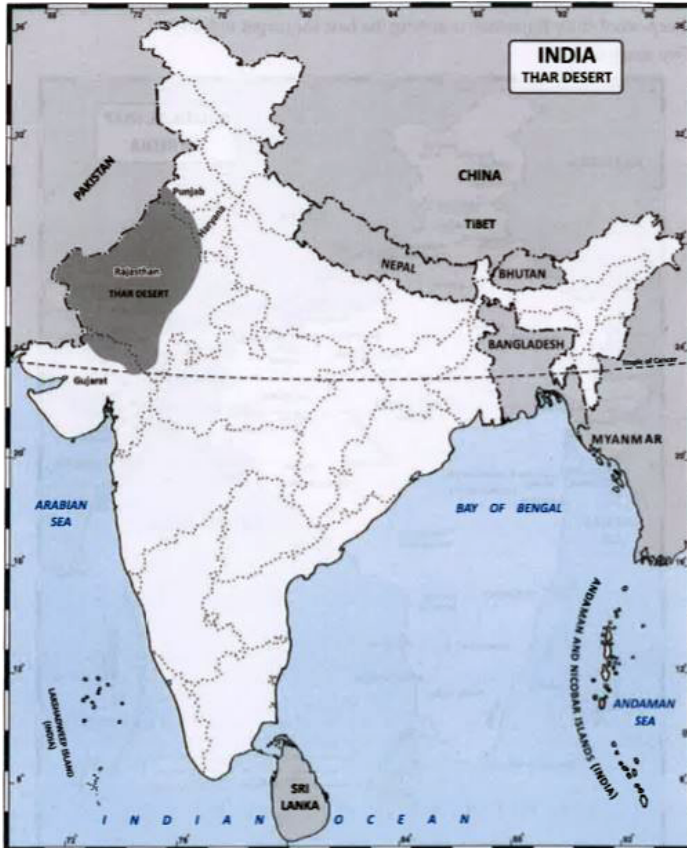


## Analytic Study Of Maps

1. The map given below illustrates the Thar Desert, also known as the Great Indian Desert. As the map represents, it is a large and completely dry region in the northwestern part of the Indian subcontinent. It covers an area of 200,000 km and forms a natural boundary between India and Pakistan. The Thar Desert is the 17th largest desert, and the world's 9th largest sub-tropical desert. About

85 percent of the Desert is located within India. The remaining 15 percent of the Desert is in Pakistan. Even in India, more than 60 percent of the Thar Desert lies in the Indian state of Rajasthan. From Rajasthan it extends into the states of Gujarat, Punjab and Haryana. In Pakistan it lies in the provinces of Sindh and

# Punjab.



[View Text Solution](#)

## 2. Two maps of India

1. Two maps of India



ENGLISH-LL-GRAMMAR-X



different parts of India. After studying the map write an analytic paragraph highlighting the number of major languages and the number of native speakers. Compare and contrast where relevant.





[View Text Solution](#)