



BIOLOGY

BOOKS - SANTRA BIOLOGY (BENGALI ENGLISH)

ENVIRONMENTAL ISSUES

Multiple Choice Questions

1. The term smog was coined by

A. Schmidt

B. hertwig

C. Benedon

D. Des Voeux

Answer: (d)



Watch Video Solution

2. Maximum green house gas is released by which of the country

A. U.S.A

B. India

C. france

D. britian

Answer: (a)



Watch Video Solution

3. Which of following is the most dangerous metal pollutant of automobile exhaust?

A. cadmium

B. mercury

C. copper

D. lead

Answer: (d)



Watch Video Solution

4. Peeling of Ozone umbrella, which protects us from UV rays is called by

A. CO₂

B. PAN

C. CFCs

D. Coal purging

Answer: (c)



Watch Video Solution

5. The formation of Ozone hole is maximum over

A. India

B. africa

C. Europe

D. Antarctica

Answer: (d)



Watch Video Solution

6. The result of Ozone hole is

A. Acid rain

B. uv radiation reaching the earth

C. green house effect

D. global warming

Answer: (c)



Watch Video Solution

7. Green- house effect is due to

A. Carbon monoxid

B. carbondioxide

C. Ammonia

D. Phosphate

Answer: (a)



Watch Video Solution

8. Green house effect refers to

A. Cooling of earth

B. Trapping UV rays

C. Warming of earth

D. Production of cereals

Answer: (c)



Watch Video Solution

9. The true statement about 'green house effect' is that it is caused by

A. CO_2 and O_2

B. MnO_2

C. CO_2 and SO_2

D. CO₂, CFC, CH₄

Answer: (d)



Watch Video Solution

10. Acid rain is due to the pollution of

A. pesticides

B. Dust particle

C. Carbon particles

D. SO₂ and NO₂

Answer: (d)



Watch Video Solution

11. Damage of (O₃) i.e. Ozone layer is due to harmful effects

- A. Carbon dioxide
- B. sulphur dioxide
- C. Organic compound
- D. Chlorofluorocarbon

Answer: (d)



Watch Video Solution

12. The amount of carbon dioxide in atmosphere after pollution will be

- A. Equal to 0.03 percent
- B. less than 0.03 percent
- C. Greater than 0.03 percent
- D. At the previously calculated

Answer: (c)



Watch Video Solution

13. Photochemical smog always contains

A. O_3

B. CH_4

C. CO

D. PO_4

Answer: (d)



Watch Video Solution

14. The supersonic jets causes pollution by the thinning of

A. CO₂ layer

B. SO₂ layer

C. O₂ layer

D. O₃ layer

Answer: (d)



15. The SO₂ pollutin affect which of the cell component?

A. Nucleus

B. vacuole

C. Chlorplast

D. Mitochnodria

Answer: (c)



16. Which among the following is an air pollution indicator?

A. Algae

B. Lichen

C. Fungi

D. ferns

Answer: (b)



Watch Video Solution

17. Green house effect was first described by

A. Suess

B. Fishes

C. Fourior

D. Flemming

Answer: (c)



Watch Video Solution

18. Which of the following components causes waer pollution

A. Ozone

B. Ammonia

C. Phtyplankton

D. industrial wastes

Answer: (d)



Watch Video Solution

19. In minamata Bay of Japan, the animals which remained free from mianmata disease are

A. pigs

B. Rabbits

C. Dog

D. Cats

Answer: (b)



Watch Video Solution

20. Minamata disease was caused by the consumption of

- A. Oyster with lots of pesticide
- B. Fish contaminated with mercury
- C. Seafood containing lot of cadmium
- D. Sea food contaminated with selenium

Answer: (b)



Watch Video Solution

21. When a huge amount of sewage is dumped into a river its BOD

A. Increases

B. Decreases

C. sharply decreases

D. Remain unchanged

Answer: (a)



Watch Video Solution

22. The high amount of E.coli in water , is the indicator of

A. hardness of water

B. industrial pollution

C. sewage pollution

D. presence of chlorine in water

Answer: (c)



Watch Video Solution

23. Pollution of soil is due to

A. Reduction of Soil productivity

B. Addition of waste on soil

C. Excessive use of fertilizers

D. all of these

Answer: (d)



Watch Video Solution

24. The basic component of smog is

A. PAN

B. PBN

C. Ozone

D. all of these

Answer: (d)



Watch Video Solution

25. Respiratory disorder occurs due to automobile exhaust because of

A. water

B. methane

C. Chlorine

D. Carbon monoxide

Answer: (d)



Watch Video Solution

26. Depletion of Ozone layer causes

- A. Skin cancer
- B. Blood cancer
- C. Lung cancer
- D. Brain cancer

Answer: (a)



Watch Video Solution

27. Heat island are produced due to

A. Air pollution

B. Water pollution

C. Land pollution

D. all of these

Answer: (a)



Watch Video Solution

28. One of the important effect of SO_2 on plant is

A. Plasmolysis

B. destruction of cell wall

C. Destruction of chlorophyll

D. Destruction of golgi body

Answer: (c)



Watch Video Solution

29. which of the folliwng causes lung diseases

A. Cotton mill

B. Nuclear reactors

C. petroleum refineries

D. Thermal power plants

Answer: (c)



Watch Video Solution

30. increased skin cancer and higher mutation rates are generally due to

A. acid rain

B. Carbod oxide

C. Ozone depletion

D. Biomagnification

Answer: (c)



Watch Video Solution

31. The msot hazardous metal pollutant of automobile exhaust is

A. Lead

B. copper

C. Mercury

D. cadmium

Answer: (a)



Watch Video Solution

32. The two great industrial tragedies namely, MIC and chenobyl repestively accured whre and when?

A. Bhopal 1980 Ukrain 1990

B. hopal 1986, Ukrain 1988

C. Bhopal 1984, Ukrian 1986

D. Bhopal 1986 , russia 1988

Answer: (c)



Watch Video Solution

33. which of the following metal is pollutant
which causes sterility in human being

A. Mercury

B. Arsenic

C. manganese

D. chromium

Answer: (c)



Watch Video Solution

34. the atmosphere pollutant which is not produced by automobile exhaust is

A. fly ash

B. Carbon monoxide

C. Sulphur dioxide

D. hydrocarbon gas

Answer: (c)



Watch Video Solution

35. The thermal pollution is caused due to the rise in the temperature of air and water to a harmful level . It is due to the heat from

A. Industries

B. Automobiles

C. Power plants

D. all of these

Answer: (c)



Watch Video Solution

36. D.D.T is

A. Not a pollutant

B. An antibiotic

C. A biodegradable pollutant

D. A non degradable pollutant

Answer: (d)



Watch Video Solution

37. The phenomena, where the pollutants pass in higher concentration through the food chain and accumulate to the maximum in the final consumer is called

A. Eutrofication

B. Biogeochemical sycle

C. Biological magnification

D. Biological degradation

Answer: (c)



Watch Video Solution

38. The nuclear power plant causes

A. theermal pollution

B. disposal of radioactive waste

C. emission of hazardous radioactive
element

D. all of these

Answer: (c)



Watch Video Solution

39. which of the following isotopes is the most dangerous to Homo sapiens

A. Cesium-137

B. iodine-131

C. Phosphorus-32

D. Strontium -90

Answer: (d)



Watch Video Solution

40. The noise created at the launching of space rocket measures

A. 100- to 120 db

B. 130 to 150db

C. 160-180 dB

D. 260-240 db

Answer: (d)



Watch Video Solution

41. kNock knee disease is due to

A. hormonal imbalane

B. gnetical abnormality in males

C. Thyrosine (amino acid) deficiency

D. Excess fluoride concentration

Answer: (d)



Watch Video Solution

42. Phosphate pollution is caused by

A. Phosphate rock only

B. agricultural fertilizers only

C. sewage and phosphate rock

D. Swage and agriculture fertilizes.

Answer: (d)



Watch Video Solution

43. which of the following is related with noise pollution

A. Buses

B. trains

C. aeropanes

D. all of these

Answer: (d)



Watch Video Solution

44. CO when mixes with haemoglobin in blood
to produce

A. CO₂

B. COHb

C. CaOH

D. ClO

Answer: (b)



Watch Video Solution

45. The rocket launching explosion is an example of

A. soil pollution

B. air pollution

C. Water pollution

D. Noise pollution

Answer: (d)



Watch Video Solution

46. In the coming years skin related disorder will be more common due to

A. Pollutant in air

B. use of detergents

C. Water pollution

D. Depletion of ozone layer

Answer: (d)



Watch Video Solution

47. Ozone depletion in stratosphere shall result in

A. Forest fire

B. Increased incidence of skin cancer

C. Global warming

D. None of the above

Answer: (b)



Watch Video Solution

48. ultraviolet radiation from sunlight causes a reaction that produces

A. Fluorides

B. Carbon monoxide

C. Sulphur dioxide

D. Ozone

Answer: (d)



Watch Video Solution

49. Noise pollution is measured in

A. hertz

B. Fathoms

C. nanometer

D. Decible

Answer: (d)



Watch Video Solution

50. Lead is

A. Air pollution

B. Soil pullutant

C. Both a and b

D. Noise pollution

Answer: (c)



Watch Video Solution

51. Taj mahal may be destroyed by

A. Flood in Yamuna

B. temperature

C. Air pollution from mathura refinery

D. Destructive to O₃

Answer: (c)



Watch Video Solution

52. Carbon monoxide is harmful to human being as it is

- A. carcinogenic
- B. Antagonistic to CO₂
- C. with higher affinity for haemoglobin
- D. Destructive to O₃

Answer: (c)



 Watch Video Solution

53. Which will not cause atmospheric pollution

A. SO₂

B. CO₂

C. CO

D. H₂

Answer: (d)



Watch Video Solution

54. Pollution is controlled by

A. banning atomic balst

B. use of electrically operated equipments

C. sewage treatment

D. all of these

Answer: (d)



Watch Video Solution

55. High DDT accumulation shall occur in

A. phytoplankton

B. Seagulls

C. Crab

D. Eel

Answer: (b)



Watch Video Solution

56. Drained sewage has BDO

A. More than that of water

B. less than that of water

C. Equal to that of water

D. None of these

Answer: (a)



Watch Video Solution

57. Lichens indicate pollution by

A. O₃

B. SO₂ layer

C. NO₂

D. CO

Answer: (b)



Watch Video Solution

58. Taj Mahal is threatened by pollution of

A. Chlorine

B. sulphur dioxide

C. Hydrogen

D. Oxygen

Answer: (b)



Watch Video Solution

59. World environment day is

A. 43889

B. 5th june

C. 7th august

D. 10th april

Answer: (b)



Watch Video Solution

60. measurement of rate of oxygen utilization by a unit volume of water over a period of time is to measure

A. Fermentation

B. Biomass generation

C. Biosynthetic pathway

D. Biochemical oxygen demand

Answer: (d)



Watch Video Solution

61. Ozone day is

A. january 30th

B. septembher 16

C. april 21th

D. december 25 th

Answer: (d)



Watch Video Solution

62. components of smog is

A. PAN

B. PBN

C. Both a and b

D.

Answer: (b)



Watch Video Solution

63. cadmium pollution is associated with

A. Anaemia

B. Itai-Itai

C. Minamata

D. Pneumoconiosis

Answer: (b)



Watch Video Solution

64. Ozone hole is maximum over

A. Europe

B. antarctica

C. India

D. africa

Answer: (b)



Watch Video Solution

65. Pollution indicator plants are

- A. Are resistant to pollution
- B. Can purify the atmosphere
- C. Are very sensitive to pollutant
- D. Can indicate onset of rain

Answer: (c)



Watch Video Solution

66. Warm ocean surge or perucurrent that recurs after 5-8 years in East pacific along south-America is

A. Elneno

B. Aye Aye

C. Mangox

D. Gull stream

Answer: (b)



Watch Video Solution

67. environmental protection act was passed
in

A. 1968

B. 1986

C. 1981

D. 1975

Answer: (b)



Watch Video Solution

68. which of the following is not used for disinfection of drinking water

A. phenyl

B. chlorine

C. ozone

D. chloramine

Answer: (a)



Watch Video Solution

69. A mutagenic pollutant is

A. Hydrocarbons

B. NO₂

C. Resins

D. Organophosphate

Answer: (a)



Watch Video Solution

70. A non -biodegradable pollutant is

A. Cowdung

B. DDT

C. Green leaves

D. Newsprint

Answer: (b)



Watch Video Solution

71. which one of the following will not control particulate pollutants

A. filter

B. scrubber

C. incinerator

D. electrostatic precipitator

Answer: (c)



Watch Video Solution

72. a chemical used in refergerator & air conditioners & is a source of e

A. Feron

B. Benzene

C. CH₄

D. Benzopyrene

Answer: (a)



Watch Video Solution

73. Gastrointestinal problems are caused by

A. Sound pollution

B. Acid pollution

C. Water pollution

D. soil pollution

Answer: (c)



Watch Video Solution

74. UV -radiation from sunligh produces

A. Fluorides

B. ozone

C. SO₂

D. CO

Answer: (b)



Watch Video Solution

75. Anthracosis is caused by

A. Coal dust

B. silica

C. Iron dust

D. Cane fibre

Answer: (a)



Watch Video Solution

76. which one is non-biodegradable

A. Sewage

B. Live-stock waste

C. market garbage

D. DDT

Answer: (d)



Watch Video Solution

77. Day time sound level in silent zone is

A. 70dB

B. 50 dB

C. 20dB

D. 40dB

Answer: (b)



Watch Video Solution

78. One of the following acts as secondary pollutants

A. Cl_2

B. Br

C. HNO_3

D. NO_2

Answer: (a)



Watch Video Solution

79. Which of the following is a green house gas

A. Oxygen

B. Water vapours

C. methane

D. Carbon

Answer: (c)



Watch Video Solution

80. Which element is the cause of itai-itai

A. Cd

B. Hg

C. As

D. Pb

Answer: (a)



Watch Video Solution

81. which is more hazardous to human health

A. humulin

B. Rotenone

C. DDT

D. Pyrethrum

Answer: (c)



Watch Video Solution

82. Maximum Ozone depletion is caused by

A. CH₄

B. CO₂

C. SO₂

D. CFC

Answer: (d)



Watch Video Solution

83. which one of the following pairs of gases are the major cause for green house effect'

A. CO₂ & N₂O

B. CO₂ & O₃

C. CO₃ & CO

D. CFCs & SO₂

Answer: (a)



Watch Video Solution

84. Measuring BOD is a method used for

A. Workign out the efficiency of RBCs,
about their capacity to cary O₂

B. Measuring the acitivity of yeast

C. Estimating the amount of organic
matter in sewage water

D. Woriking out theefficieency of oil driven
automobile engines

Answer: (c)



Watch Video Solution

85. The Air -Prevention & Control of pollution act came into force in

A. 1981

B. 1985

C. 1990

D. 1975

Answer: (a)



Watch Video Solution

86. In Chamoli district of Garhwal Himalayas the Chipko movement was initiated in

A. 1982

B. 1972

C. 1970

D. 1975

Answer: (b)



Watch Video Solution

Choose More Than One Correct Answers

1. Which of the following are biodegradable ?

A. Glass

B. Paper

C. Cloth

D. Plastic

Answer: (b),(c)



Watch Video Solution

2. Primary air pollutants include

A. H₂S

B. CO₂

C. PAN

D. CO

Answer: (a),(b),(d)



Watch Video Solution

3. Green house gas do not include

A. CH

B. Argon

C. PAN

D. CFC

Answer: (b),(d)



Watch Video Solution

4. which of these can measure pollution of water body

A. B.O.D

B. C.O.D

C. D.O

D. Colour

Answer: (a),(b),(c)



Watch Video Solution

5. Which of these persist in the nature undergo mangification

A. Manganese

B. Iron

C. Arsenic

D. DDT

Answer: (c),(d)



Watch Video Solution

6. which of the following was movements taken against felling of tree?

A. Satyagraha movement

B. chipko movment

C. Bishnoi movement

D. silent valley

Answer: (b),(c),(d)



Watch Video Solution

7. main leaders of chipKo movement were

A. Goura devi

B. Amrita devi

C. Sunderlal Bahuguna

D. Dasholi gram samiti

Answer: (a),(c)



Watch Video Solution

8. which of the following are the protocols undertaken by UNEP?

A. Montreal

B. Veitanam

C. Kyoto

D. Venezuela

Answer: (a),(c)



Watch Video Solution

9. which is not a water borne disease?

A. Cholera

B. Poliomyelitis

C. viral fever

D. Jaundice

Answer: (b),(c)



Watch Video Solution

10. which of the following are wetlands?

A. Palak

B. Chilka

C. Sundarbans

D. dhaulpur

Answer: (a),(b),(c)



Watch Video Solution

Fill In The Blanks

1. Automobiles are the largest source of ____
pollution in cities.



Watch Video Solution

2. Secondary treatment for polluted water are
____ and acitivated sludge method.



Watch Video Solution

3. Afforestation can check the advancement of

___.



Watch Video Solution

4. ___ radiations have high penetrability.



Watch Video Solution

5. DDT is a serious pollutant as it is a _____
pollutant and undergoes ____.



[Watch Video Solution](#)

6. _____ plant has become a troublesome weed in agricultural field.



[Watch Video Solution](#)

7. _____ are major Aerosol pollutant present in jet air air craft emission.



[Watch Video Solution](#)

8. itai Itai disease is Caused by ____ pollution.



[Watch Video Solution](#)

9. COD stands for ____



[Watch Video Solution](#)

10. Minamata disease was first detected in ____.



[Watch Video Solution](#)

11. the DDT is a ____ pollutants .



[Watch Video Solution](#)

12. The electric power plant cause ____
pollution.



[Watch Video Solution](#)

13. ____ is located at Nagpur.





[Watch Video Solution](#)

14. The aquatic wee ____ can reduce water pollution by 75%



[Watch Video Solution](#)

15. The liquied diquied dispersion of aerosals is called_____.



[Watch Video Solution](#)

16. Maximum emission of CO occurs by burning of ____.



[Watch Video Solution](#)

17. ____ of USA was once named as smokey city.



[Watch Video Solution](#)

18. A heavy metal pollutant released in automobile exhaust is ____.



[Watch Video Solution](#)

19. Cadmium pollution caused ___ disease in japan .



[Watch Video Solution](#)

20. the intensity of whisper is aournd ____
decible.



[Watch Video Solution](#)

Mention True And False

1. Smog causes craking of rubber .



[Watch Video Solution](#)

2. The quality of top soil lost maximum in india



[Watch Video Solution](#)

3. Inexpensive defluoridation techniques have been developed in india



Watch Video Solution

4. Growth of lichens on tree are promoted by air pollution



Watch Video Solution

5. Lichens serves as pollution indicator.



[Watch Video Solution](#)

6. cyclone collector are used to remove larger particle.



[Watch Video Solution](#)

7. Maximum noise pollution is residential area is due to traffic.



[Watch Video Solution](#)

8. Indian agriculture soil gets polluted mainly by pesticide.



Watch Video Solution

9. The blue baby syndrome or cyanosis is caused due to pollution by cyanides.



Watch Video Solution

10. First Earth summit was held New Delhi.





[Watch Video Solution](#)

11. The pesticide causes congenital problems.



[Watch Video Solution](#)

12. The CO₂ causes physical death due to oxygen starvation.



[Watch Video Solution](#)

13. acid rain caused due to oxidation of nitrogen and sulphur.



Watch Video Solution

14. Ozone destroys the crops of potato, alfalfa and spinach.



Watch Video Solution

15. The Uv and the Ir rays are ionising radiation.



Watch Video Solution

16. The photochemical smog contains PAN and ozone.



Watch Video Solution

17. The second major nuclear reactors accident occurred at the miles Island of USA.



Watch Video Solution

18. the solid disperesion of aerosols is called dust.



Watch Video Solution

19. Sonic booms are caused by jet planes.



[Watch Video Solution](#)

20. The Bhopal gas tragedy occurred in 1986.



[Watch Video Solution](#)

Very Short Answer Type Questions

1. What are the five main types of pollution ?



[Watch Video Solution](#)

2. Name the major surface waer pollutant from runoff and bathroom water.



Watch Video Solution

3. What photochemical oxidants pollute air ?



Watch Video Solution

4. What is PAN?



Watch Video Solution

5. what are aerosoles?



Watch Video Solution

6. which pollutant contributed by aeroplanes?



Watch Video Solution

7. How can SO₂ pollution of air be checked?



Watch Video Solution

8. why are tall chimneys recommended for factories?



Watch Video Solution

9. what is BOD?



Watch Video Solution

10. Give the sources of pathogen into water.





[Watch Video Solution](#)

11. Name the type of pollutant according to their natural disposal.



[Watch Video Solution](#)

12. Mention th type of pollutants according to their natural disposal.



[Watch Video Solution](#)

13. what is eutrophication?



Watch Video Solution

14. what do mean by nuclear fallow ?



Watch Video Solution

15. which is greater air pollutant, man or nature



Watch Video Solution

16. Name the source of pathogen in water.



Watch Video Solution

17. what is electrically charging pollutant particles and collecting them on an opposite charge called?



Watch Video Solution

18. Give two example of radioactive nucleotide.



Watch Video Solution

19. What are mobile combustion sources?



Watch Video Solution

20. name two types of wetland.



Watch Video Solution

21. name two sources of thermal pollution.



Watch Video Solution

22. Give the cause of Minamata and Itai itai disease.



Watch Video Solution

23. Name the most harmful pesticide.



Watch Video Solution

24. what are ODS?



Watch Video Solution

25. what si ElNino?



Watch Video Solution

26. Expand the term S.P.M.



Watch Video Solution

27. what are aerosols?



Watch Video Solution

28. Who coined the term acid rain



Watch Video Solution

29. what are physical pollutant of water ?



Watch Video Solution

30. Name the most serious water pollutant



Watch Video Solution

31. define eutrophication.



Watch Video Solution

32. what are the main causes of thermal pollution?



Watch Video Solution

33. what is the ill effect of thermal pollution?



Watch Video Solution

34. which disease is associated with tht eating of Hg-contaminated fishes?



Watch Video Solution

35. Give the cause of Knock knee disease.



[Watch Video Solution](#)

36. where is NEERI located?



[Watch Video Solution](#)

37. Name the disease associated with cadmium pollution.



[Watch Video Solution](#)

38. which organism is used to measure of sewage contamination in water bodies?



Watch Video Solution

39. give the term for the increase in the amount of toxic substance in successive trophic levels of a food chains?



Watch Video Solution

40. Name two pollutant which undergo biological magnification.



Watch Video Solution

41. name the great environmentalist who is also a magsaysay award winner.



Watch Video Solution

42. what is the ill -effect of D.D.T. ?



[Watch Video Solution](#)

43. what is sludge?



[Watch Video Solution](#)

44. name the treatment of pollutated water ,
salt like nitrates and phosphates.



[Watch Video Solution](#)

45. what are indices of water pollution.



Watch Video Solution

46. give full form of BOD.



Watch Video Solution

47. what is the BOD of a weak organic waste water body?



Watch Video Solution

48. what is biotic index?



Watch Video Solution

49. What are the sources of phosphate
pollutio of water?



Watch Video Solution

50. which of the following has higher value:

COD or BOD?



[Watch Video Solution](#)

Short Answer Type Question

1. Differentiate between Biodegradable and non biodegradable pollutants.



[Watch Video Solution](#)

2. Name various air pollutant sources.



[Watch Video Solution](#)

3. Name major air pollutant.



[Watch Video Solution](#)

4. What is acid rain ? Who coined the term acid rain ?



[Watch Video Solution](#)

5. What are photochemical oxidants? Name two photochemical oxidants. Give their ill effects.



[Watch Video Solution](#)

6. Give the sources of carbon monoxide and their effects.



[Watch Video Solution](#)

7. What are the ill effects of C.F.C?



[Watch Video Solution](#)

8. what is green house effect?



[Watch Video Solution](#)

9. Name the soruces of water pollution.



[Watch Video Solution](#)

10. What is thermal pollution and state its ill effect?



Watch Video Solution

11. Name two water pollution related disease caused by heavy elements.



Watch Video Solution

12. give the ill effects of nitrated and phosphats of Fertilizers.



Watch Video Solution

13. Define biomagnification. Name tow chemicals which show biomagnification.



Watch Video Solution

14. define Deforestation. What are the causes of deforestation in india.



Watch Video Solution

15. Differentiate between negative soil pollution and positive soil pollution.



Watch Video Solution

16. Briefly illustrate the ill effects of radioactive pollution.



Watch Video Solution

17. What is nuclear fallout? List some radioisotopes present in nuclear fallout?



Watch Video Solution

18. What is the unit of noise pollution ? State two ill effects of it .



Watch Video Solution

19. What is photochemical smog? How does smog affect the biological world?



Watch Video Solution

20. Distinguish between point and non point sources of water pollution.



Watch Video Solution

21. State the consequence of stratospheric ozone depletion,



Watch Video Solution

22. What is pollution?



[Watch Video Solution](#)

23. What is green house effect?



[Watch Video Solution](#)

24. what is global warming



[Watch Video Solution](#)

25. what is acid rain



[Watch Video Solution](#)

26. what is photochemical somog



[Watch Video Solution](#)

27. what is SPM?



[Watch Video Solution](#)

28. What is air pollution ?



Watch Video Solution

29. what is primary pollutant ?



Watch Video Solution

30. what is secondary pollutant ?



Watch Video Solution

31. what is water pollution ?



Watch Video Solution

32. Mention two control process of water pollution?



Watch Video Solution

33. Name four water borne diseases?



Watch Video Solution

34. What is pollution?



Watch Video Solution

35. what is sound pollution?



Watch Video Solution

36. mention three harmful effects of acid rain?



Watch Video Solution

37. what is decible?



Watch Video Solution

38. Name foru sources of noise pollution?



Watch Video Solution

39. what is radioactive pollution



Watch Video Solution

40. what is thermal pollution?



Watch Video Solution

41. what is Ozone hole?



Watch Video Solution

42. what is Earth Summit?



Watch Video Solution

43. Briefly describe about the Silent Valley movement.



Watch Video Solution

Long Answer Type Question

1. What is environmental pollution ? Can pollution of the environment occur without Human intervention.



Watch Video Solution

2. Name the major atmospheric pollutant and their source.



[Watch Video Solution](#)

3. How do the following effect the land resource. (a) deforestation (b) safety way for using Agrochemical (c) Ill effects to land by pesticides (d) By using excessive amount of chemical fertilizer € compost manure.



[Watch Video Solution](#)

4. Explain the following: (a) Green house effect
(b) Ozone hole



Watch Video Solution

5. What is meant by ozone Hole do the CFCs is
ozone depleting substance



Watch Video Solution

6. Write Explanatory notes on (a) effect of air pollution on vegetation (b) BOD (c) thermal pollution (d) radioactive disposal.



Watch Video Solution

7. Write in brief the ill effect of air pollution.



Watch Video Solution

8. Account for the cause of smog, acid rain, and green house effect. How do they effect us?



Watch Video Solution

9. what is scrubbur?



Watch Video Solution

10. What is nuclear fallout and state the ill effect of it.



[Watch Video Solution](#)

11. Define biomagnification ? Discuss the biomagnification of DDT and its ill effect.



[Watch Video Solution](#)

12. Why are nuclear power stations considered as a threat to ecological security.



[Watch Video Solution](#)

13. What is the importance of wet-land? Briefly state about the Eutrophication.



Watch Video Solution

14. Describe about the Chipko Movement, Dasholi Gram Sarajya Mandal (DGSM) movement and Amrita Devi Bishnoi Movement.



Watch Video Solution

1. The eye of octopus and eye of cat show different patterns of structure, yet they perform similar function. This is an example of

A. Analogous organs that have evolved due to divergent evolution.

B. Homologous organs that have evolved due to convergent evolution

C. Homologous organs that have evolved due to divergent evolution.

D. analogous organs tht have evolved due to convergent evolution.

Answer: (d)



Watch Video Solution

2. Selecti the correct statement with respect to locomotion in humans

A. The joint between adjacent vartabra is a fibrous joint

B. A decreased level of progesterone cause osteoporosis in old people .

C. Accumulation of uric acid crystals in joints causes their inflammation.

D. The vertebral column has 10 thoracic vertebrae.

Answer: (c)



Watch Video Solution

3. A phosphoglycerid is always made up of

A. A saturated or unsaturated fatty acid esterified to a phosphate group which is also attached to a glycerol molecule.

B. Only a saturated fatty acid esterified to a glycerol molecule to which a phosphate group is also attached

C. Only an unsaturated fatty acid esterified to a glycerol molecule to which a

phosphate group is also attached.

D. A saturated or unsaturated fatty acid esterified to a glycerol molecule to which a phosphate group is also attached.

Answer: (d)



Watch Video Solution

4. Perisperm differs from endosperm in

- A. Its formation by fusion of secondary nucleus with several sperma
- B. Being a haploid tissue
- C. having no reserve food
- D. Being a diploid tissue.

Answer: (d)



Watch Video Solution

5. A sedentary sea anemone gets attached to the shell lining of hermit crab. The association is

- A. Amensalism
- B. Ectoparasitism
- C. Symbiosis
- D. Commensalism

Answer: (d)



Watch Video Solution

6. The cell mediated immunity inside the human body is carried out by

- A. Erythrocytes
- B. T-lymphocytes
- C. B-lymphocytes
- D. Thrombocytes

Answer: (b)



Watch Video Solution

7. Which of the following are likely to be present in deep sea water?

A. Saprophytic fungi.

B. Archaeobacteria

C. Eubacteria.

D. Blue-green algae

Answer: (c)



Watch Video Solution

8. One of the representatives of phylum arthropoda is

A. Flying fish

B. Cuttlefish

C. sliver fish

D. Puffer fish

Answer: (c)



Watch Video Solution

9. megasporangium is equivalent to

- A. Ovule
- B. Embryo sac
- C. Fruit
- D. nucellus

Answer: (a



Watch Video Solution

10. Kyoto Protocol was endorsed at

A. CoP-4

B. CoP-3

C. CoP-5

D. CoP-6

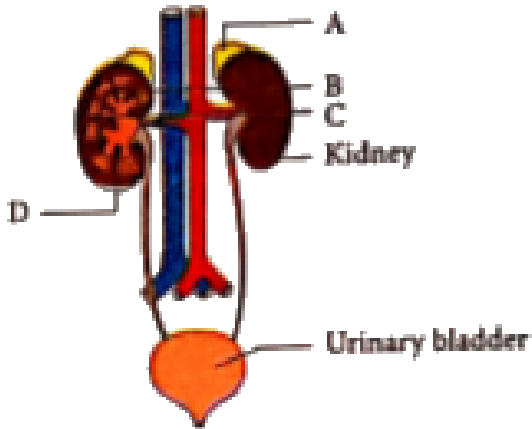
Answer: (b)



Watch Video Solution

11. Figure shows human urinary system with structures labelled A to D. Select option which correctly identifies them and give their

characteristics and /or functions.



A. D-Cortex -outer part of kidney and do not contain any part of nephrons.

B. A-Adrenal gland-located at the anterior part of kidney. Secrete catecholamines which stimulate glycogen breakdown.

C. B-Pelvic broad funnel shaped space inner to hilum, directly connected to loops of Henle.

D. C- medulla -inner zone of kindey and contains complete nephrons.

Answer: (b)



Watch Video Solution

12. In china rose the flowers are

A. Zygomorphic, epigynous with twisted aestivation

B. Actinomorphic, hypogynous with twisted aestivation

C. Actinomorphic, epigynous with valvate aestivation

D. Zygomorphic, hypogynous with imbricate aestivation

Answer: (b)



Watch Video Solution

13. the Golgi complex plays a major role

A. In post translational modification of proteins and glycosylation of lipids.

B. In trapping the light and transforming it into chemical energy

C. In digesting proteins and carbohydrates

D. As energy transferring organelles.

Answer: (a)



[Watch Video Solution](#)

14. what external change are visible after the last moult of a cockroach nymph

- A. Labium develops
- B. mandibles became harder
- C. Anal cerci develop
- D. Both fore wings and hind wings develop

Answer: (d)



[Watch Video Solution](#)

15. Isogamous condition with non-flagellated gametosis found in

A. Fucus

B. Chlamydomonas

C. Spirogyra

D. Volvox

Answer: (c)



Watch Video Solution

16. Transition state structure of the substrate formed during an enzymatic reaction is

- A. Permanent and stable
- B. transient but stable
- C. permanent but unstable
- D. transient and unstable

Answer: (d)



Watch Video Solution

17. Select the answer which correctly matches the endocrine gland with the hormone it secretes and its function/deficiency symptom

Endocrine gland	Hormone	Function/ deficiency symptoms
(a) Corpus luteum	Testosterone	Stimulates Spermatogenesis
(b) Anterior pituitary	Oxytocin	Stimulates uterus contraction during child birth
Endocrine gland	Hormone	Function/ deficiency symptoms
(c) Posterior pituitary	Growth Hormone (GH)	Oversecretion stimulates abnormal growth
(d) Thyroid gland	Thyroxine	Lack of iodine in diet results in goitre



[Watch Video Solution](#)

18. The colonies of recombinant bacteria appear white in contrast to blue colonies of non recombinant bacteria because of

A. Inactivation of glycodiase enzyme in recombinant bacteria

B. Non recombinant bacteria containing betagalactosidase

C. Insertional inactivation of alphagalactosidase in nonrecombinant bacteria

D. Insertional inactivation of
α-galactosidase in recombinant
bacteria

Answer: (d)



Watch Video Solution

19. Monocious plant of Chara shown
occurrence of

- A. upper Cogonium and lower antheridium
on the same plant
- B. Antheridiophore ad archegoniophore on
the same plant
- C. Stamen and carpel on the same plant
- D. upper antheriduium and lowe oogonium
on the same plant

Answer: (a)



Watch Video Solution

20. Advantage of cleistogamy is

A. Vivipary

B. Higher genetic variability

C. More vigorous offspring

D. No dependence on pollinators

Answer: (d)



Watch Video Solution

21. The H-zone in the skeletal muscle fibre is due to

A. Extension of myosin filaments in the central portion of the A-band

B. The absence of myofibrils in the central portion of A-band

C. The central gap between myosin filaments in the A-band

D. The central gap between activ filaments extending through myosin filaments in the A-band.

Answer: (c)



Watch Video Solution

22. Artificial insemination means

A. Introduction of sperms of a healthy donor directly into the ovary

B. transfer of sperms of a healthy donor to a test tube containing ova

C. Transfer of sperms of husband to a test tube containing ova

D. Artificial introduction of sperms of a healthy donor into the vagina

Answer: (d)



Watch Video Solution

23. which group of animals belong to the same phylum?

A. sponge , Sea anemone, starfish

B. malarial parasite, amoeba, Mosquito

C. Earthworm Pinworm, Tapeworm

D. prawn scorpion, Locusta

Answer: (d)



Watch Video Solution

24. Seed coat is not thin, membranous in

A. Gram

B. maize

C. Coconut

D. Groundnut

Answer: (c)



Watch Video Solution

25. If two persons with AB blood group marry and have sufficiently large number of children these children could be classified as A blood group: B blood group in 1:1 ratio. Modern technique of protein electrophoresis reveals presence of both A and B type proteins in AB blood group individuals. This is an example of

A. Complete dominance

B. Codominance

C. Incomplete dominance

D. Partial dominance

Answer: (b)



Watch Video Solution

26. which of the following cannot be detected in a developing foetus by amnicentesis ?

A. jaundice

B. klinefelter syndrome

C. sex of the foetus

D. Down syndrome

Answer: (a)



Watch Video Solution

27. The first stable product of fixation of atmospheric nitrogen in leguminous plants is

A. Glutamate

B. NO_2^-

C. Ammonia

D. NO_3^-

Answer: (c)



Watch Video Solution

28. A biologist studied the population of rats in a barn. He found that the average natality was 250, average mortality 240, immigration 20 and emigration 30. The net increase in population is

A. 0

B. 10

C. 15

D. 5

Answer: (a)



Watch Video Solution

29. Secondary productivity is rate of formation of new organic matter by

A. Decomposer

B. producer

C. Parasite

D. consumer

Answer: (d)



Watch Video Solution

30. Infection of Ascaris usually occurs by

A. Mosquito bite

B. drinking water containing eggs of

Ascaris

C. eating imperfectly cooked pork

D. Tse-tse fly

Answer: (b)



Watch Video Solution

31. The tendency of population to remain in genetic equilibrium may be disturbed by

A. lack of random mating

B. random mating

C. lack of migration

D. lack of mutations

Answer: (a)



Watch Video Solution

32. A good producer of citric acid is

A. Saccharomyces

B. Aspergillus

C. Pseudomonas

D. Clostridium

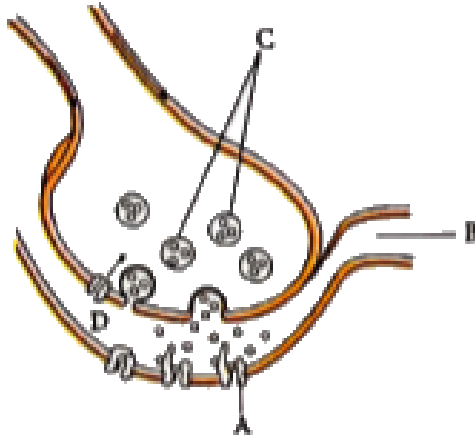
Answer: (b)



Watch Video Solution

33. A diagram showing axon terminal and synapse is given. Identify correctly at least

two of A-D



A. C-Neurotransmitter

B. A-receptor C-Synaptic vesicles

C. B-Synaptic connection D-K⁺

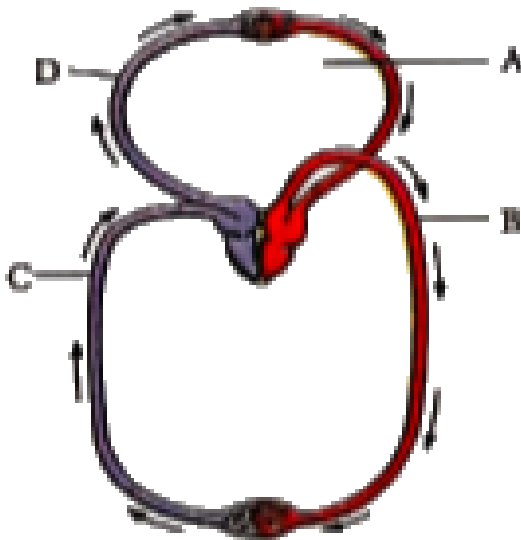
D. A-Neurotransmitter B-Synaptic cleft

Answer: (b)



Watch Video Solution

34. Figure show schematic plan of blood circulation in humans with labels A to D. Indentigfy the labe and give its function/s



A. D-Dorsal aorta -takes blood from heart
to body parts, $PO_2 = 95$ mm Hg

B. A-Pulmonary vein takes impure blood
from body parts, $Po_2 = 60$ mm Hg

C. B-Pulmonary artery -takes blood from
heart to lungs, $PO_2 = 90$ mm Hg

D. C-Vena Cave -taks blood from body parts
to right auricle, $PCO_2 = 45$ mm Hg

Answer: (d)



Watch Video Solution

35. Age of a tree can be estimated by

A. diameter of its heartwood

B. its height and girth

C. biomass

D. number of annual rings

Answer: (d)



Watch Video Solution

36. The process by which organisms with different evolutionary history evolve similar phenotypic adaptations in response to a common environmental challenge, is called

- A. Adaptive radiation
- B. natural selection
- C. Convergent evolution
- D. Non-random evolution

Answer: (c)



Watch Video Solution

37. Interfascicular cambium develops from the cells of

- A. Pericycle
- B. Medullary rays
- C. Xylem parenchyma
- D. Endodermis

Answer: (b)



Watch Video Solution

38. During seed germination its stored food is mobilized by

A. Gibberellin

B. Ethylene

C. Cytokinin

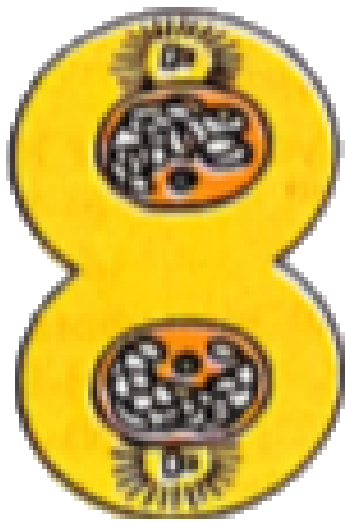
D. ABA

Answer: (c)



Watch Video Solution

39. A stage in cell division is shown in the figure. Select the answer which give correct identification of the stage with its characteristics.

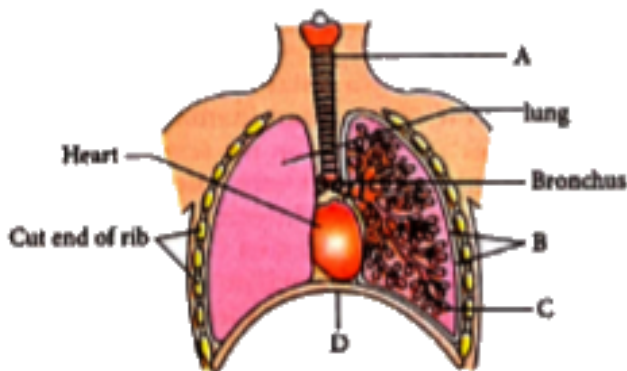


(a) Telophase	endoplasmic reticulum and nucleolus not reformed yet.
(b) Telophase	nuclear envelop reforms, golgi complex reforms.
(c) Late anaphase	chromosomes move away from equatorial plate, golgi complex not present.
(d) Cytokinesis	cell plate formed, mitochondria distributed between two daughter cells.



[Watch Video Solution](#)

40. The figure shows a diagrammatic view of human respiratory system with labels A, B, C and D. Select the option which give correct identification and main function and or characteristic.



A. D-lower end of lungs -diaphragm pulls it down during inspiration

B. A-trachea long tube supported by complete cartilaginous rings for conducting inspired air.

C. B-pleural membrane surround ribs on both sides to provide cushion against rubbing.

D. C-alveoli-thin walled vascular bag like structures for exchange of gases.

Answer: (d)



Watch Video Solution

41. Meiosis takes place in

A. Megaspore

B. Meiocyte

C. Conidia

D. Gemmule

Answer: (b)



Watch Video Solution

42. According to Darwin, the organic evolution is due to

A. Reduced feeding efficiency in one species due to the presence of interfering species.

B. Intraspecific competition

C. Interspecific competition

D. Competition within closely related species.

Answer: (c)



Watch Video Solution

43. Which of the following criteria does not pertain to facilitated transport?

A. Uphill transport

B. Requirement of special membrane proteins

C. High selectivity

D. Transport saturation

Answer: (a)



Watch Video Solution

44. A major site for synthesis of lipids is

A. Nucleoplasm

B. RER

C. SER

D. symplast

Answer: (c)



[Watch Video Solution](#)

45. Natural reservoir of phosphorus is

- A. Fossils
- B. Sea water
- C. Animal bones
- D. Rock

Answer: (d)



[Watch Video Solution](#)

46. which of the metabolites is comon to respiration mediated breakdown of fats, carbohydrates and proteins?

A. AcetyE CoA

B. Glucose-6-phosphate

C. Fructose 1,6-bisphosphate

D. Pyruvic acid

Answer: (a)



Watch Video Solution

47. Which one of the following processes during decomposition is correctly described

A. leaching -water soluble inorganic

nutrients rise to the top layers of soil

B. Fragmentation -Carried out by

organisms such as earth worm

C. humification Lead to the accumulation

of a dark coloured substance humus

which undergoes microbial action at a very fast rate

D. Catabolism-Last stop in the decomposition under fully anaerobic condition.

Answer: (b)



Watch Video Solution

48. If both parents are carriers for thalassemia, which is an autosomal recessive disorder, what are the chances of pregnancy resulting in an affected child?

A. 1

B. no chance

C. 0.5

D. 0.25

Answer: (d)



Watch Video Solution

49. which of the following statements is not true of two genes that show 50% recombination frequency?

A. If the genes are present on the same chromosome, they undergo more than one crossovers in every meiosis.

B. The genes may be on different chromosomes

C. The genes are tightly linked

D. The genes show independent assortment

Answer: (c)



Watch Video Solution

50. One of the legal methods of birth control is

A. By a premature ejaculation during coitus

B. Abortion by taking an appropriate medicine

C. By abstaining from coitus from day 10 to 17 of the menstrual cycle

D. By having coitus at the time of day break

.

Answer: (b)



Watch Video Solution

51. besides paddy fields cyanobacteria are also found inside vegetative part of

A. Psilotum

B. pinus

C. Cycas

D. Equirsetum

Answer: (c)



Watch Video Solution

52. which of the following are correctly matched with respect to their taxonomic classification

A. Sloth anteater, sea urchin, sea cucumber - Echinodermata.

B. Flying fish, cuttlefish, silverfish - Pisces

C. Centipede, millipede, spider, scorpion - Insecta

D. House fly, butterfly, tsetse fly, silverfish - Insecta

Answer: (d)



Watch Video Solution

53. Variation in gene frequencies within populations can occur by chance rather than by natural selection. This is referred to as

A. Genetic load

B. Genetic flow

C. Genetic drift

D. Random mating

Answer: (c)



Watch Video Solution

54. Select the correct match of the digested products in human given in column I with their absorption site and mechanism in column II.

and mechanism in column II.

Column I	Column II
(a) Cholesterol,	large intestine, active absorption
(b) Glycine, glucose	maltose
(c) Fructose, Na ⁺	small intestine, active absorption
(d) Glycerol, fatty acids	small intestine, passive absorption
	duodenum, move as chylomicrons



Watch Video Solution

55. Select the wrong statement

A. Chlamydomonas exhibits both isogamy and anisogamy and fucus shows oogamy.

B. isogametes are similar in structure, function and behaviour

C. Anisogametes differ either in structure, function or behaviour

D. In Oomycetes female gamete is smaller and motile, while male gamete is larger and non-motile.

Answer: (d)



Watch Video Solution

56. which mendelian idea is depicted by a cross in which the F1 generation resembles both the parents

A. Co-dominance

B. Incomplete dominance

C. Law of dominance

D. Inheritance of one gene

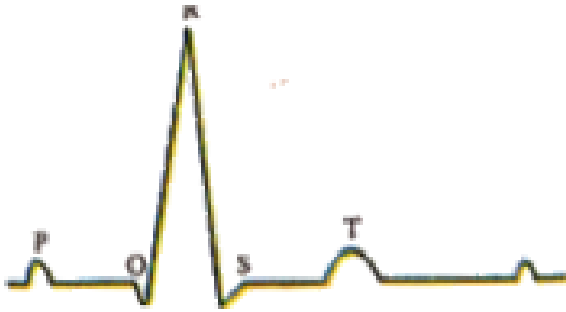
Answer: (d)



Watch Video Solution

57. The diagram given here is the standard ECG of a normal person. The P-wave represents

the



- A. End of systole
- B. Contraction of both the atria
- C. Initiation of the ventricular contraction
- D. Beginning of the systole

Answer: (b)



Watch Video Solution

58. which enzymes will be produced in a cell in which there is a nonsense mutation in the lac Y gene?

A. lactose permease and transacetylase

B. b-galactosidase

C. Lactose permease

D. Transacetylase

Answer: (b)



Watch Video Solution

59. The most abundant intracellular cation is

A. K^+

B. Na^+

C. Ca^{++}

D. H^+

Answer: (a)



Watch Video Solution

60. Which one of the following is not the function of placenta?

A. Secretes oxytocin during parturition

B. Facilitates supply of oxygen and nutrients to embryo

C. Secretes estrogen.

D. Facilitates removal of carbon dioxide and waste material from embryo.

Answer: (a



Watch Video Solution

61. In plant breeding programmes, the entire collection (of plants/seeds) having all the diverse alleles for all genes in a given crop is called

A. Germplasm collection

B. Selection of superior recombinants.

C. Cross-hybridisation among the selected
parents

D. Evaluation and selection of parents.

Answer: (a)



Watch Video Solution

62. which one of the following is not a correct statement?

A. Key is a taxonomic aid for identification of specimens.

B. herbarium houses dried, pressed and preserved plant specimens.

C. Botanical gardens have collection of living plants for reference.

D. A museum has collection of photographs of plants and animals.

Answer: (d)



Watch Video Solution

63. Which one of the following organelle in the figure correctly matches with its function?



A. Rough endoplasmic reticulum, protein synthesis

B. Rough endoplasmic reticulum, formation of glycoproteins

C. Golgi apparatus, protein synthesis

D. Golgi apparatus, formation of glycolipids

Answer: (a)



Watch Video Solution

64. Which of the following represent maximum number of species among global biodiversity?

A. Mosses and ferns

B. Algae

C. Lichens

D. Fungi

Answer: (d)



Watch Video Solution

65. which of the following Bt crops is being grown in Indai by the farmers?

A. Soybean

B. Maize

C. Cotton

D. Brinjal

Answer: (c)



Watch Video Solution

66. Read the following statements (i-v) and answer the question which follows them.

A. In liverworts, mosses, and ferns gametophytes are freeliving.

B. Gymnosperms and some ferns are heterosporous

C. Sexual reproduction in fucus, volvox and albugo is oogamous

D. The sporophyte in liverworts is more elaborate than that in mosses

Answer: (d)



Watch Video Solution

67. The essential chemical components of many coenzymes are

A. Vitamins

B. Proteins

C. Nucleic acids

D. Carbohydrates

Answer: (a)



Watch Video Solution

68. Pigment -containing membranous extensions in some cyanobacteria are

A. chromatophores

B. heterocysts

C. basal bodies

D. pneumatophores

Answer: (a)



Watch Video Solution

69. which one of the following statemets is correct?

A. Tapetum nourished the developing pollend

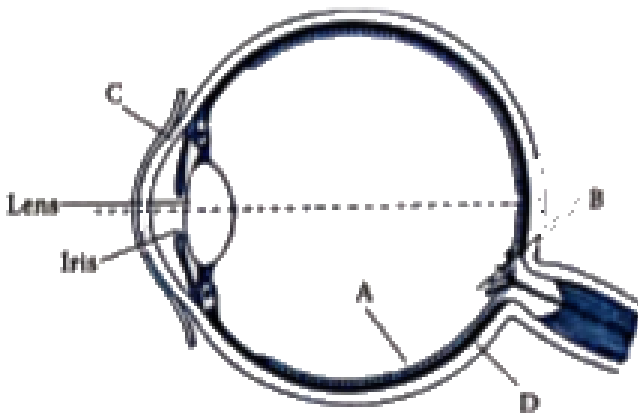
B. Hard outer layer of pollend is called intine

C. sporgeneus tissue is haploid

D. endothecium produces the micropores

Answer: (a)

70. Parts A,B,C and D of the human eyes are shown in the diagram. Select the option which gives correct identification along with its functions/characterstisc



A. D-Choroid -its anterior part forms ciliary body.

B. A-Retina-contains photo receptors-rods and cones.

C. B-Blind spot has only a few rods and cones.

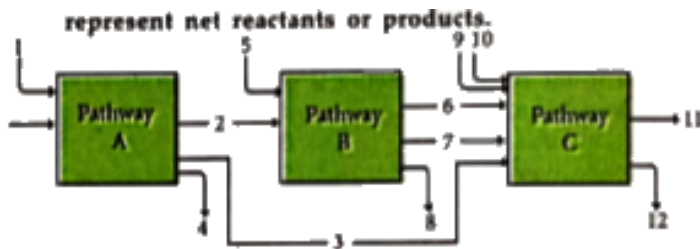
D. C-Aqueous chamber -reflects the light which does not pass through the lens.

Answer: (b)



Watch Video Solution

71. The three boxes in this diagram represent the three major biosynthetic pathways in aerobic respiration. Arrows represent net reactants or products.



A. FED^+ or $FADH_2$

B. NADH

C. ATP

D. H_2O

Answer: (c)



Watch Video Solution

72. The air prevention and Control of Pollution

Act came into force in

A. 1990

B. 1975

C. 1981

D. 1985

Answer: (c)



Watch Video Solution

73. Product of sexual reproduction generally generated

A. large biomass

B. prolonged dormancy

C. new genetic combination leading to variation

D. Longer viability of seeds

Answer: (d)



Watch Video Solution

74. The characteristics and an example of a synovial joint in human is

Characteristics	Examples
(a) lymph filled between two bones, limited movement	gliding joint between carpals
(b) fluid cartilage between two bones, limited movements.	knee joint
(c) Fluid filled between two joints, provides cushion	skull bones
(d) fluid filled synovial cavity between two bones	joint between atlas and axis



[Watch Video Solution](#)

75. Among bitter gourd mustared brinjal pumpkin china rose, lupin, cucumber sunnhemp, gram guava , bean, chilli, plumpetunia, tomato rose, withania, potato

onion, aloe and tulip how many plants have hypogynous flower?

A. Eighteen

B. Six

C. Ten

D. Fifteen

Answer: (d)



Watch Video Solution

76. A pregnant female delivers a baby who suffers from stunted growth, mental retardation, low intelligence quotient and abnormal skin. This is the result of

- A. over secretion of pars distalis
- B. Deficiency of iodine in diet
- C. Low secretion of growth hormone
- D. Cancer of the thyroid gland

Answer: (b)



Watch Video Solution

77. Which of the following is not correctly matched for the organism and its cell wall degrading enzyme?

- A. Fungi-chitinase
- B. bacteria-Lysozyme
- C. Plant cells -Cellulase
- D. Algae methylase

Answer: (d)





Watch Video Solution

78. Menstrual flow occurs due to lack of

- A. Vasopressin
- B. Progesterone
- C. FSH
- D. Oxytocin

Answer: (b)



Watch Video Solution

79. Global warming can be controlled by

A. Increasing deforestation, reducing efficiency of energy usage.

B. Reducing deforestation, cutting down use of fossil fuel.

C. Reducing reforestation, increasing the use of fossil fuel.

D. Increasing deforestation, slowing down the growth of human population.

Answer: (b)



Watch Video Solution

80. Which one of the following is not used for ex situ plant conservation?

- A. Botanical Gardens
- B. Field gene banks
- C. Seeds banks shifting cultivation
- D. shifting cultivation

Answer: (d)



Watch Video Solution

81. During sewage treatment, biogases are produced which include?

A. Hydrogensulphide, nitrogen, methane

B. Methane, hydrogensulphide, carbon dioxide

C. Methane, oxygen, hydrogensulphide

D. Hydrogensulphide, methane, sulphur dioxide

Answer: (d)



Watch Video Solution

82. The diagram shows an important concept in the genetic implication of DNA. Fill in the blank A to C.

A. A-translation B-extension C-Rosalind
franklin

B. A-transcription B-replication C -james
watson

C. A-translation B-translation C-Erevin
chargaff

D. A-transcription B-translation C-Francis
Crick

Answer: (d)



Watch Video Solution

83. DNA fragments generated by the restriction endonucleases in a chemical reaction can be separated by

- A. Restriction mapping
- B. Centrifugationm
- C. Polymerase chain reaction
- D. Electrophoresis

Answer: (d)



Watch Video Solution

84. The complex formed by a pair of synapsed homologous chromosomes is called

- A. Axoneme
- B. Equatorial plate
- C. Kinetochore
- D. Bivalent

Answer: (d)



Watch Video Solution

85. The incorrect statement with regard to hemophilia is

- A. A single protein involved in the clotting of blood is affected
- B. It is a sex-linked disease
- C. It is a recessive disease
- D. It is a dominant disease

Answer: (d)



Watch Video Solution

86. which of the following statements is correct in relation to the endocrine system?

A. Releasing and inhibitory hormones are produced by the pituitary gland.

B. Adenohypophysis is under direct neural regulation of the hypothalamus

C. Organs in the body like gastrointestinal tract, heart kindey and liver do not

produce any hormones.

D. Non-nutrient chemicals produced by the body in trace amount that act as intercellular messenger are known

Answer: (d)



Watch Video Solution

87. Lenticels are involved in

A. Photosynthesis

B. Transpiration

C. gaseous exchange

D. Food transport

Answer: (c)



Watch Video Solution

88. Match the name of the animal (Column I), with one characteristics (column II) and the

phylum/class (column III)to which it belongs

Column-I	Column-II	Column-III
(a) Adamsia	radially symmetrical	Porifera
(b) Petromyzon	ectoparasite	Cyclostomata
(c) Ichthyophis	terrestrial	Reptilia
(d) Limulus	body covered by chitinous exoskeleton	Pisces



[Watch Video Solution](#)

89. what is the correct sequence of sperm formation?

A. Spermatogonia, spermatocyte,
spermatid, spermatozoa

B. Spermatogonia, spermatocyte,
spermatozoa, spermatozoa

C. Spermatogonia, spermatocyte,
spermatozoa, spermatid

D. spermatogonia, spermatozoa,
spermatocyte, spermatid

Answer: (a)



Watch Video Solution

90. Macro molecule chitin is

- A. Simple polysaccharide
- B. Nitrogen containing polysaccharide
- C. Phosphorus containing polysaccharide
- D. sulphur containing polysaccharide

Answer: (b)



Watch Video Solution