



# BIOLOGY

## BOOKS - CHETAN BIOLOGY (TAMIL ENGLISH)

### ANIMAL CLASSIFICATION

**Fill In The Blanks And Rewrite The Statements**

1. Greek philosopher ..... classified animals  
for the first time



[Watch Video Solution](#)

2. The long rod like supporting structure present on the dorsal side of animal body is called .....



[Watch Video Solution](#)

3. According to Robert Whittaker, all multicellular animals are included in kingdom .....





[Watch Video Solution](#)

4. Body organization of unicellular animals is referred to as ..... organization



[Watch Video Solution](#)

5. In case of multicellular animals, the body organization is referred to as .....



[Watch Video Solution](#)

6. Flat worms show ..... organization.



**Watch Video Solution**

7. All higher animals show  
.....organization.



**Watch Video Solution**

8. The cavity between the body and internal  
organs is called .....



**Watch Video Solution**

9. If the body cavity is absent, the animal is called .....



**Watch Video Solution**

10. Body cavity is absent in .....



**Watch Video Solution**

**11.** In Aschelminthes, the body cavity is not formed by mesoderm. So, they are called as

.....



**Watch Video Solution**

**12.** If the body of animals is divided into small, similar units, then such a body is called as

.....



**Watch Video Solution**

**13.** Animals belonging to Porifera have special types of cells called .....



**Watch Video Solution**

**14.** The animals belong to Porifera bear numerous pores on their body called .....



**Watch Video Solution**

**15.** Body of animals from .....is cylindrical or umbrella-like



**Watch Video Solution**

**16.** If the body of a coelenterata is cylindrical, it is called .....



**Watch Video Solution**

**17.** Spicules are made up of .....





[Watch Video Solution](#)

**18.** The precious stone ..... is derived from coral reefs.



[Watch Video Solution](#)

**19.** Annelides have ..... for locomotion.



[Watch Video Solution](#)

20. In arthropods, ..... exoskeleton is present around the body.



[Watch Video Solution](#)

21. Hemichordates are also called .....



[Watch Video Solution](#)

22. Through the point of view of evolution,..... is considered as connecting

link between non-chordates and chordates.



**Watch Video Solution**

**23.** The flying mammal is .....



**Watch Video Solution**

**24.** Reptilians are ..... blooded animals



**Watch Video Solution**

25. Aves are ..... blooded animals.



[Watch Video Solution](#)

## Find The Odd One Out

1. Annelida, Arthropoda, Reptilia, Mollusca.



[Watch Video Solution](#)

2. Protozoa, Cyclostomata, Amphibia, Aves.



[Watch Video Solution](#)

3. Hydra, Sea anemone, Sycon, Coral



[Watch Video Solution](#)

4. Jellyfish, Starfish, Sea-urchin, Planaria.



[Watch Video Solution](#)

5. Earthworm, Crab, Mosquito, Spider.



[Watch Video Solution](#)

6. Scorpion, Earthworm, Nereis, Leech



[Watch Video Solution](#)

7. Spider, Cockroach, Butterfly, Bivalve.



[Watch Video Solution](#)

8. Bat, Whale, Monkey, Ostrich.



[Watch Video Solution](#)

**9. Platyhelminthes, Cnidaria, Arthropoda,  
Annelida**



**Watch Video Solution**

**10. Sycon, Euspongia, Adamsia, Euplectella**



**Watch Video Solution**

**11. Sea anemone, Hydra, Aurelia, Ascaris**



**Watch Video Solution**

**12. Parrot, Bat, Pigeon, Crow.**



**Watch Video Solution**

**13. Bivalve, Butterfly, Octopus, Snail.**



**Watch Video Solution**

**14. Lizard, Snake, Penguin, Python.**





[View Text Solution](#)

**15.** Dog fish, Shark, Rohu, Salamander.



[View Text Solution](#)

**16.** Find the odd one out :

Sea horse, Frog, Toad, Salamander.



[Watch Video Solution](#)

**17.** Find the odd one out:

Kangaroo, Kiwi, Penguin, Peacock



**Watch Video Solution**

**18.** Jellyfish, Starfish, Sea-urchin, Planaria.



**Watch Video Solution**

**19.** Pseudopodia, Cilia, Setae, Ostia.



**Watch Video Solution**

## Complete The Analogy

1. Amoeba : Asymmetrical :: Frog : \_\_\_ \_



[Watch Video Solution](#)

2. Fish : Bilateral symmetry :: Starfish : \_\_\_



[Watch Video Solution](#)

3. Ostia : to take in water : : Oscula : \_\_\_



[Watch Video Solution](#)

4. Liverfluke: hermaphrodite: : Ascaris: \_\_\_\_



[Watch Video Solution](#)

5. Sea anemone : Diploblastic : : Planaria : \_\_\_\_



[Watch Video Solution](#)

6. Shark : Pisces : : Toad : \_\_\_



[Watch Video Solution](#)

7. Aves : Homeotherms : : Reptilia : \_\_\_\_\_



[Watch Video Solution](#)

8. Scolidon : Cartilagenous : : Pomfret : \_\_\_\_\_



[Watch Video Solution](#)

9. Amoeba: Pseudopodia :: Earthworm : \_\_\_\_\_



[Watch Video Solution](#)

10. Scorpion : Arthropoda :: Snail : \_\_\_\_\_



[Watch Video Solution](#)

11. Starfish: Tube feet: : Euglena : \_\_



[Watch Video Solution](#)

12. Largest phylum : Arthropoda : : Second largest phylum: \_\_



Watch Video Solution

13. Salamander : Amphibia :: Balanoglossus :

----



Watch Video Solution

14. Pigeon: Aves : : Bat : \_\_\_\_\_



[Watch Video Solution](#)

15. Herdmania : Urochordata :: Amphioxus \_\_\_\_\_



[Watch Video Solution](#)

16. Starfish : Echinodermata :: Balanoglossus :  
\_\_\_\_\_



[Watch Video Solution](#)



17. Planaria : Platyheminthes :: Filarial worm :

-----



[Watch Video Solution](#)

18. Earthworm : Annelida :: Millipede : \_\_



[Watch Video Solution](#)

**Match The Following**

# 1. Match the following

Column A	Column B
(1) Acoelomate	(a) Starfish
(2) Radially Symmetrical	(b) Frog
(3) Bilaterally Symmetrical	(c) <i>Amoeba</i>



**Watch Video Solution**

## 2. Match the following

Column A	Column B
(1) Porifera	(a) Sea anemone
(2) Coelenterata	(b) <i>Ascaris</i>
(3) Platyhelminthes	(c) <i>Sycon</i>
(4) Aschelminthes	(d) Liverfluke



**Watch Video Solution**

### 3. Match the following

Column A	Column B
(1) Annelida	(a) Jointed appendages
(2) Arthropoda	(b) Segmented body
(3) Mollusca	(c) Flat body
(4) Echinodermata	(d) Soft body
	(e) Spiny body



[Watch Video Solution](#)

#### 4. Match the following

Column A	Column B
(1) Hemichordata	(a) <i>Amphioxus</i>
(2) Cephalochordata	(b) <i>Saccoglossus</i>
(3) Urochordata	(c) <i>Petromyzon</i>
(4) Cyclostomata	(d) <i>Herdmania</i>



Watch Video Solution

#### 5. Match the following

Column A	Column B
(1) Pisces	(a) Lungs
(2) Amphibia	(b) Gills
(3) Aves	(c) Skin



Watch Video Solution

6. Match the following

Column A	Column B
(1) Pisces	(a) Salamander
(2) Amphibia	(b) Penguin
(3) Reptilia	(c) Scoliodon
(4) Aves	(d) Dolphin
(5) Mammalia	(e) Tortoise



Watch Video Solution

## 7. Match the following

Column A	Column B
(1) Tube feet	(a) Hydra
(2) Ventral foot	(b) Nereis
(3) Setae	(c) Snail
(4) Tentacles	(d) Earthworm
(5) Parapodia	(e) Starfish



[Watch Video Solution](#)

## 8. Match the following

<b>Column A (Class)</b>	<b>Column B (Example)</b>
(1) Mammalia	(a) Sea horse
(2) Pisces	(b) Elephant
(3) Reptilia	(c) Toad
(4) Amphibia	(d) Tortoise



**Watch Video Solution**



## 9. Match the following

Column A	Column B
(1) Arthropoda	(a) Head, Foot, Visceral mass
(2) Hemichordata	(b) Head, neck, trunk, tail
(3) Mollusca	(c) Proboscis, collar, trunk
(4) Mammalia	(d) Head, thorax, abdomen



[Watch Video Solution](#)

**State Whether The Following Statement Is True Or False Correct The False Statement**

1. Platyhelminthes show 'organ system grade organization' .



[Watch Video Solution](#)

2. The first man to classify animals was Aristotle



[Watch Video Solution](#)

3. Classification proposed by Aristotle is known as 'Natural method of classification'



[Watch Video Solution](#)

4. In non-chordates, pharyngeal gill-slits are present.



[Watch Video Solution](#)

5. The basic unit of all animals is cell



[Watch Video Solution](#)

6. The human body is bilaterally symmetrical



[Watch Video Solution](#)

7. Animals with true body cavity are called acoelomates.



[Watch Video Solution](#)

**8.** Octopus can change its body colour.



**Watch Video Solution**

**9.** The exoskeleton of echinoderms contain calcium carbonate.



**Watch Video Solution**

**10.** In cyclostomata, the endoskeleton is bony.



**Watch Video Solution**

**11. Bat is a flying mammal**



**Watch Video Solution**

**12. Arthropods are hermaphrodites.**



**Watch Video Solution**

**13. The mouth of Aves is modified into beak.**



**Watch Video Solution**

**14.** Spider belongs to Annelida



**Watch Video Solution**

**15.** Euspongia is a sedentary animal.



**Watch Video Solution**

**16.** Tentacles of coelenterates help in injecting toxin in the body of prey.



[Watch Video Solution](#)

**17.** Ascaris is unisexual.



[Watch Video Solution](#)

**18.** A precious stone called coral is derived from coral reef.



[Watch Video Solution](#)



19. Liverfluke is an ectoparasite



[Watch Video Solution](#)

20. The body of arthropods is covered by a tough cuticle.



[Watch Video Solution](#)

21. Earthworm belongs to phylum Aschelminthes.



[Watch Video Solution](#)

22. The body of molluscs is covered with calcareous spines



[Watch Video Solution](#)

23. In amphibia, exoskeleton is in the form of scales



[Watch Video Solution](#)

24. Amphioxus belongs to urochordata.



[Watch Video Solution](#)

25. Reptiles are homeotherms (warm-blooded )



[Watch Video Solution](#)

26. Petromyzon belongs to class Pisces.



[Watch Video Solution](#)

**27.** In urochordata, notochord is present throughout the body length.



**Watch Video Solution**

**28.** Cnidoblast bearing tentacles are present around the mouth in Porifera.



**Watch Video Solution**

**29.** Platyhelminthes are hermaphrodites.





[Watch Video Solution](#)

## Name The Following

1. Name the following: One Poriferan



[Watch Video Solution](#)

2. Animal having tentacles around mouth.



[Watch Video Solution](#)

3. Animal whose body is made up of segments



[Watch Video Solution](#)

4. Through the point of view of evolution,..... is considered as connecting link between non-chordates and chordates.



[Watch Video Solution](#)

5. Cartilaginous fish



[Watch Video Solution](#)

6. Aquatic mammal



[Watch Video Solution](#)

7. Name the following :

Acoelomate, unicellular animal



[Watch Video Solution](#)

8. Animal showing three germ layers



[Watch Video Solution](#)

9. What are the locomotory organs of Annelids?



[Watch Video Solution](#)

**Answer The Following In One Sentence Each**

1. How are animals classified broadly?



[Watch Video Solution](#)



2. \_\_\_ Was the first to classify animals.



**Watch Video Solution**

3. What is natural system of classification?



**Watch Video Solution**

4. How are chordates further classified?



**Watch Video Solution**

5. Platyhelminthes:



[Watch Video Solution](#)

6. What do you mean by the term 'triploblastic'?



[View Text Solution](#)

7. Why are Aschelminthes called round worms?



**Watch Video Solution**

**8. What is Annelida?**



**Watch Video Solution**

**9. What are the germ layers found in Cnidarians?**



**Watch Video Solution**

**10.** What do you mean by the term Arthropoda?



**Watch Video Solution**

**11.** What is the substance present in the exoskeleton of Arthropods?



**Watch Video Solution**

**12.** Name the largest and the second largest phyla



**Watch Video Solution**

**13.** Name the different parts in which body of Arthropoda is divided.



**Watch Video Solution**

**14.** Name the parts in which the body of Molluscan is divided.



**Watch Video Solution**

**15.** I am a friend of farmers.



**Watch Video Solution**

**16.** What are the parts of the body of Hemichordata?



**Watch Video Solution**

**17.** What are cold-blooded animals?



**Watch Video Solution**

**18.** Which is the main respiratory organ for amphibians?



**Watch Video Solution**

**19.** What do you mean by the term 'Homeotherm'?



**Watch Video Solution**

**20.** Which are the animals from phylum Arthropoda those have shortest and longest life span?



**Watch Video Solution**



1. I am diploblastic and acoelomate. Which phylum do I belong to?



[Watch Video Solution](#)

2. I locomote with tube feet, I have radial symmetry.



[Watch Video Solution](#)

3. I am a friend of farmers.



[Watch Video Solution](#)

4. I lay eggs though I am a mammalian.



[Watch Video Solution](#)

5. My digits are without claws and external ear is absent. Which class do I belong to?



[Watch Video Solution](#)

6. I make pearl in my body.



**Watch Video Solution**

7. I am an annelid ectoparasite that sucks blood.



**Watch Video Solution**

8. I belong to mammalia, but I can fly.



[Watch Video Solution](#)

9. I am a mammal who lives in deep oceans.



[Watch Video Solution](#)

10. I am a small, fish-like marine animal with notochord present throughout the body length.



[Watch Video Solution](#)

**11.** I am an annelid and hermaphrodite



**Watch Video Solution**

**12.** My body is made up of fibres of a protein  
spongin



**Watch Video Solution**

**13.** I am a clever molluscan, I can change my  
colour





[Watch Video Solution](#)

**14.** I am considered as the link between Non-chordates and chordates



[Watch Video Solution](#)

**15.** I am the largest animal



[Watch Video Solution](#)

**16.** My body is radially symmetrical. Water vascular system is present in my body. I am referred as fish though I am not'. What is my name?



**Watch Video Solution**

**17.** I live in your small intestine . Pseudocoelom is present in my thread like body. In which phylum will you include me?



**Watch Video Solution**

18. Though I am multicellular, there are no tissues in my body. What is the name of my phylum?



[Watch Video Solution](#)

**Choose And Write The Correct Option**

1. The first person to perform classification of animals was \_\_\_\_\_



A. Theophrastus

B. Linnaeus

C. Aristotle

D. Meyer

**Answer:**



**Watch Video Solution**

2. Pharyngeal gill-slits are absent in \_\_\_\_\_

A. Non-chordates

B. Chordates

C. Vertebrates

D. Craniates

**Answer:**



**Watch Video Solution**

**3.** In case of multicellular animals, the body organization is referred to as .....

A. protoplasmic

B. cellular grade

C. tissue grade

D. organ system

**Answer:**



**Watch Video Solution**

4. Amoeba is a \_\_\_\_\_ animal.

A. symmetrical

B. Bilaterally symmetrical

C. radially symmetrical

D. asymmetrical

**Answer:**



**Watch Video Solution**

5. Radial symmetry is observed in \_\_\_\_

A. Amoeba

B. Octopus

C. Starfish

D. Fish

**Answer:**



**Watch Video Solution**

6. The animals with three germ layers are called \_\_\_\_\_

A. Diploblastic

B. Monoblastic

C. Triplet

D. Triploblastic

**Answer:**



**Watch Video Solution**

7. The mammal which lays eggs is \_\_\_\_\_

A. Platypus

B. Bat

C. Whale

D. Bear

**Answer:**



**Watch Video Solution**

**8. shows bilaternal symmetry.**

A. Amoeba

B. Starfish

C. Fish

D. Jellyfish

**Answer:**



Watch Video Solution

9. In annelida, \_\_\_\_\_ help in locomotion

A. pseudopodia

B. cilia

C. flagella

D. setae

**Answer:**



Watch Video Solution



10. The warm blooded animals are called \_\_\_\_\_

A. Poikilotherms

B. Homeotherms

C. Ambitherms

D. Parasitic

**Answer:**



**Watch Video Solution**

11. In \_\_\_\_\_ the exoskeleton is absent.

A. Amphibia

B. Aves

C. Reptilia

D. Mammalia

**Answer:**



**Watch Video Solution**

12. The animals which do not possess body cavity are called \_\_\_\_\_

- A. Acoelomate
- B. Coelomate
- C. Pseudocoelomate
- D. Eucoelomate

**Answer:**



**Watch Video Solution**

13. The \_\_\_\_\_ are exclusively marine.

A. Molluscs

B. Coelenterates

C. Annelids

D. Echinoderms

**Answer:**



**Watch Video Solution**

14. In \_\_\_\_\_ the fertilization is external.

A. Frog

B. Bat

C. Snake

D. Parrot

**Answer:**



**Watch Video Solution**

**15.** Which special cells are present in the body of sponges (Porifera)?

A. Collar cells

B. Cnidoblasts

C. Germcells

D. Ectodermal cells

**Answer:**



**Watch Video Solution**

**16.** Which of the following animals' body shows bilateral symmetry?

A. Star fish

B. Jelly fish

C. Earthworm

D. Sponge

**Answer:**



**Watch Video Solution**

**17.** Which of the following animals can regenerate its broken body part?

A. Cockroach

B. Frog

C. Sparrow

D. Star fish

**Answer:**



**Watch Video Solution**

**18.** Bat is included in which class?

A. Amphibia



B. Reptilia

C. Aves

D. Mammalia

**Answer:**



**Watch Video Solution**

**19.** \_\_\_\_\_ has the power of regeneration.

A. Cockroach

B. Star fish

C. Frog

D. Sparrow

**Answer:**



**Watch Video Solution**

**20.** Name the following : (i) A phylum which has acoelomates. \_\_\_\_\_.

A. Annelida

B. Aschelminthes

C. Cnidaria

D. Mollusca

**Answer:**



**Watch Video Solution**

**21. Define Exoskeleton**

A. Pisces

B. Aves

C. Mammalia

## D. Amphibia

**Answer:**



**Watch Video Solution**

**Define**

## 1. Animal Classification



**Watch Video Solution**

## 2. Notochord



[Watch Video Solution](#)

## 3. What are warm blooded animals?



[Watch Video Solution](#)

## 4. Define chordata



[Watch Video Solution](#)

5. What is diploblastic animals?



[Watch Video Solution](#)

6. Write notes on triploblastic animals.



[Watch Video Solution](#)

7. What is hermaphrodite?



[Watch Video Solution](#)

**8. Define the following:**

Amphibians



**Watch Video Solution**

**9. Acoelomate**



**Watch Video Solution**

**10. External Fertilization**



**Watch Video Solution**

## 11. Ectoparasites



[Watch Video Solution](#)

## 12. Cellular grade organization



[Watch Video Solution](#)

## 13. Sedentary animals



[Watch Video Solution](#)



## 14. Segmented body



[Watch Video Solution](#)

**Write Short Notes**

## 1. Germ layers.



[Watch Video Solution](#)

## 2. Body Cavity (Coelom).



[Watch Video Solution](#)

## 3. Body Symmetry.



[Watch Video Solution](#)

## 4. Advantages of animal classification



[Watch Video Solution](#)

## 5. Animal Classification



[Watch Video Solution](#)

## 6. What is the need for classification?



[Watch Video Solution](#)

**Complete The Following Chart As Per The Given Information**

1. Complete the following chart as per the given information



[View Text Solution](#)

2. Complete the flow chart by writing the answers for 'A' and 'B' and define them:

DNA  $\xrightarrow{A}$  *mRNA*  $\xrightarrow{B}$  Chains of Amino  
Acids



[Watch Video Solution](#)

3. Complete the following chart as per the given information



[View Text Solution](#)

4. Complete the following chart as per the given information



[View Text Solution](#)

5. Complete the following chart as per the given information



[View Text Solution](#)

## Label The Following Diagrams

1. Heredmania



[Watch Video Solution](#)

## 2. Petromyzon



[Watch Video Solution](#)

## 3. Nereis



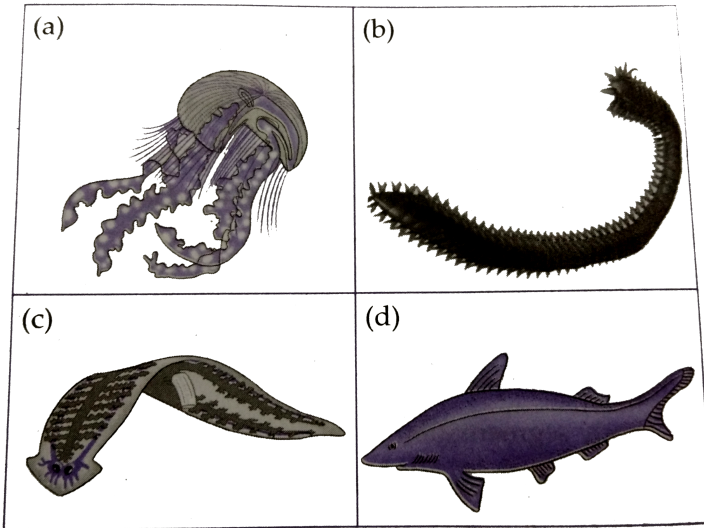
[Watch Video Solution](#)

## 4. Germ layers.



[Watch Video Solution](#)

5. Identify the following diagram



Watch Video Solution

6. Name the body parts in the following diagram







[Watch Video Solution](#)

## 7. Cockroach



[Watch Video Solution](#)

## Answer The Following

1. Which criteria are used for classification of organisms?



[Watch Video Solution](#)

2. How may be the leech used in ayurvedic system of treatment?



[Watch Video Solution](#)

3. Animals like ghariyal and crocodile live in water as well as land . Are they amphibians or reptiles?



[Watch Video Solution](#)

4. Animals like whale, walrus live in water (ocean). Whether they are included in pisces or mammalia?



[Watch Video Solution](#)

5. What is chitin?



[Watch Video Solution](#)

**Distinguish Between**

1. Distinguish between

Butterfly and Bat



**Watch Video Solution**

2. Distinguish between

Non-Chordates and Chordates



**Watch Video Solution**

**3. Distinguish between**

Platyhelminthes and Aschelminthes



**Watch Video Solution**

**4. Distinguish between**

Mollusca and Echinodermata



**Watch Video Solution**

**5. Distinguish between**

**Pisces and Amphibia**



**Watch Video Solution**

**6. Distinguish between**

**Reptilia and Mammalia**



**Watch Video Solution**

7. Distinguish between

Urochordata and Cephalochordata



**Watch Video Solution**

8. Distinguish between

Male Ascaris and Female Ascaris



**Watch Video Solution**

**9. Distinguish between**

Cyclostomata and Pisces



**Watch Video Solution**

**10. Distinguish between**

Mammalia and Aves



**Watch Video Solution**

**Write The Characteristics Of Following Animals  
With Reference To Their Classification**



1. Write the characteristics of following animals with reference to their classification:

Rohu



[Watch Video Solution](#)

2. Write the characteristics of following animals with reference to their classification:

Grasshopper



[Watch Video Solution](#)

3. Write the characteristics of following animals with reference to their classification:

Elephant



[Watch Video Solution](#)

4. Write the characteristics of following animals with reference to their classification:

Penguin



[Watch Video Solution](#)

5. Write the characteristics of following animals with reference to their classification:

Crocodile



**Watch Video Solution**

6. Write the characteristics of following animals with reference to their classification:

Frog



**Watch Video Solution**

7. Write the characteristics of following animals with reference to their classification:

Lizard



[Watch Video Solution](#)

8. Write the characteristics of following animals with reference to their classification:

Jelly fish



[Watch Video Solution](#)

9. Write the characteristics of following animals with reference to their classification:

Centipede



[View Text Solution](#)

10. Write the characteristics of following animals with reference to their classification:

Balanoglossus



[View Text Solution](#)

**11.** Write the characteristics of following animals with reference to their classification:

Amphioxus



**View Text Solution**

**12.** Write the characteristics of following animals with reference to their classification:

Herdmania



**Watch Video Solution**

**13.** Write the characteristics of following animals with reference to their classification:

Petromyzon



**Watch Video Solution**

**14.** Write the characteristics of following animals with reference to their classification:

Bat



**Watch Video Solution**

**15.** Write the characteristics of following animals with reference to their classification:

Bathsponge



**Watch Video Solution**

## **Give The Characteristics Of The Following With Examples**

**1.** Give the characteristics of the following with examples :

Sub phylum Urochordata





[Watch Video Solution](#)

**2. Give the characteristics of the following with examples :**

Sub phylum Cephalochordata



[Watch Video Solution](#)

**3. Give the characteristics of the following with examples :**

Sub phylum Vertebrata (Craniata)





[Watch Video Solution](#)

4. Give the characteristics of the following with examples :

Class Cyclostomata



[Watch Video Solution](#)

5. Give the characteristics of the following with examples :

Class Pisces



[Watch Video Solution](#)

6. Give the characteristics of the following with examples :

Class Amphibia



[Watch Video Solution](#)

7. Give the characteristics of the following with examples :

Class Reptilia



[Watch Video Solution](#)

**8.** Give the characteristics of the following with examples :

Class Aves (Birds)



**Watch Video Solution**

**9.** Give the characteristics of the following with examples :

Class Mammalia



**Watch Video Solution**

# Enlist The Characteristics Of The Following Phyla

## 1. Phylum - Porifera



[Watch Video Solution](#)

## 2. Phylum Coelenterata (Cnidaria)



[Watch Video Solution](#)

## 3. Phylum Platyhelminthes





[Watch Video Solution](#)

#### 4. Phylum Aschelminthes (Nemalhelminthes)



[Watch Video Solution](#)

#### 5. Phylum - Annelida (Segmented worms)



[Watch Video Solution](#)

#### 6. Phylum - Arthropoda





**Watch Video Solution**

## 7. Phylum - Mollusca



**Watch Video Solution**

## 8. Phylum-Echinodermata (Echino-spiny, derma-skin)



**Watch Video Solution**

## 9. Phylum - Hemichordata



[Watch Video Solution](#)

### Give Scientific Reasons

1. Though tortoise lives on land as well as in water , it cannot be included in class - Amphibia.



[Watch Video Solution](#)



2. Our body irritates if it comes in contact with a jelly fish.



**Watch Video Solution**

3. All vertebrates are chordates but all chordates are not vertebrates.



**Watch Video Solution**

4. Balanoglossus is connecting link between nonchordates and chordates.



[Watch Video Solution](#)

5. Body temperature of reptiles is not constant.



[Watch Video Solution](#)

6. Frogs can live on land as well as in water.



[Watch Video Solution](#)

7. Digestive system is feebly developed in endoparasites.



[Watch Video Solution](#)

8. Birds (Aves) are adapted to aerial mode of life



[Watch Video Solution](#)

9. Earthworm is called as friend of farmers.



[Watch Video Solution](#)

10. Poriferans are called sedentary animals.



[Watch Video Solution](#)

11. Why are Poriferans called sedentary animals?



[Watch Video Solution](#)

## Answer The Following Questions

1. To which phylum does Cockroach belong?

Justify your answer with scientific reasons.



[Watch Video Solution](#)

2. What do you mean by 'Notochord'? Explain.



[Watch Video Solution](#)

### 3. How are plants classified?



[Watch Video Solution](#)

## Complete The Following Flow Chart

### 1. Conventional system of Animal classification



[Watch Video Solution](#)

### 2. Complete the chart-Classification of living organisms



**Watch Video Solution**

**3. Complete the chart-Classification of living organisms**



**Watch Video Solution**

**4. Complete the chart-Classification of living organisms**



**Watch Video Solution**

5. Complete the chart-Classification of living organisms



[Watch Video Solution](#)

**Draw Well Labelled Diagrams And Write The Classification**

1. Hydra



[Watch Video Solution](#)



## 2. Jelly fish



[Watch Video Solution](#)

## 3. Planaria



[Watch Video Solution](#)

## 4. Ascaris (Round worm)



[Watch Video Solution](#)

## 5. Earthworm



[Watch Video Solution](#)

## 6. Octopus



[Watch Video Solution](#)

## 7. Balanoglossus



[Watch Video Solution](#)

## 8. Shark



[Watch Video Solution](#)

## 9. Frog



[Watch Video Solution](#)

## 10. Wall Lizard



[Watch Video Solution](#)

## 11. Pigeon



[Watch Video Solution](#)

## 12. Bat



[Watch Video Solution](#)

## 13. Butterfly



[Watch Video Solution](#)

## 14. Starfish



[Watch Video Solution](#)

## 15. Sycon



[Watch Video Solution](#)

## 16. Liverfluke



[Watch Video Solution](#)

## Answer The Following Questions In Brief

1. Write in brief about progressive changes in animal classification?



[Watch Video Solution](#)

2. What is the exact difference between grades of organization and symmetry. Explain with examples.



[Watch Video Solution](#)

3. What types of benefit and harm occur to human from animals of phylum Arthropoda?



**Watch Video Solution**

4. Why has it been said that only insects directly compete with humans for food?



**Watch Video Solution**

**Assignment**

1. \_\_\_\_\_ is considered as connecting link between Non-chordates and Chordates



**Watch Video Solution**

2. State True or False : Arthropods are hermaphrodites



**Watch Video Solution**



3. Find the odd one out: Bat, Whale , Monkey ,  
Ostrich



[Watch Video Solution](#)

4. Amoeba is a \_\_\_\_ animal

- A. Symmetrical
- B. Bilaterally symmetrical
- C. Radially symmetrical
- D. Asymmetrical

**Answer:**



**Watch Video Solution**

5. In \_\_\_\_\_ , the Fertilization is external

A. Frog

B. Bat

C. Snake

D. Parrot

**Answer:**



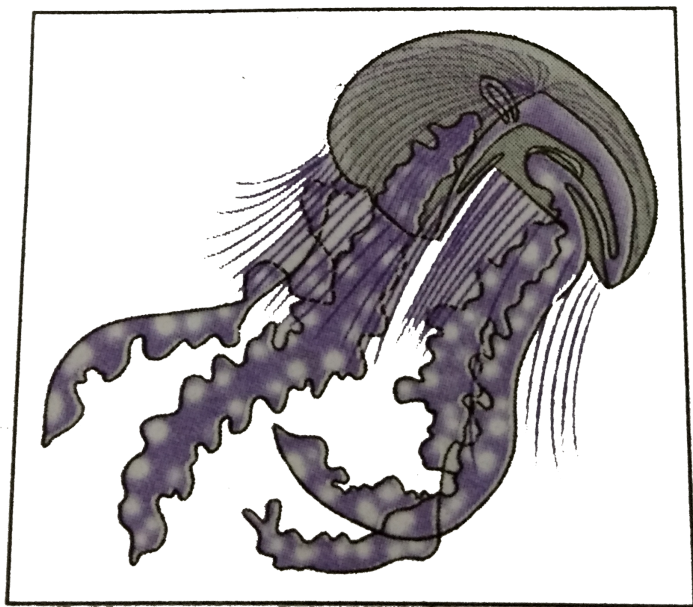
**Watch Video Solution**

**6. Distinguish between :Bat and Butterfly**



**Watch Video Solution**

7. Classify the following :



**Watch Video Solution**

**8. Complete the following table :**

	<b>Animal</b>	<b>Organ for locomotion</b>	<b>Example</b>
(1)			Arthropoda
(2)	Pigeon		

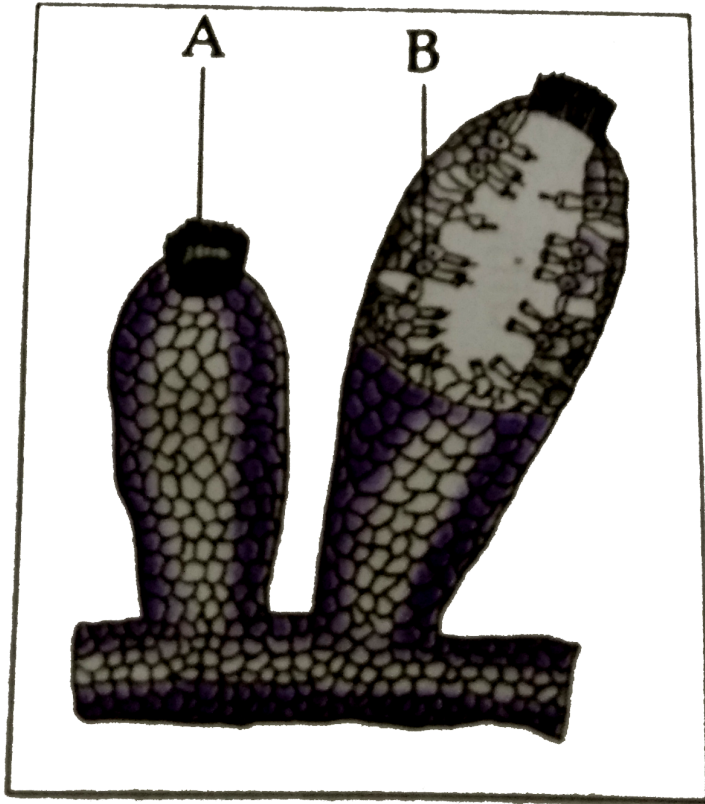


**Watch Video Solution**

**9. (1) Identify the animal**

**(2) Label parts A and B**

(3 ) Write the function of A



Watch Video Solution

**10.** Write the characteristic of Penguins with reference of their classification



**Watch Video Solution**

**11.** Draw a neat labelled diagram of Hydra



**Watch Video Solution**

**12.** Write in brief about progressive changes in animal classification?



[Watch Video Solution](#)

**13.** Enlist benefits and harm occurring to humans from animals of Phylum Arthropoda .



[Watch Video Solution](#)