



BIOLOGY

BOOKS - CHETAN BIOLOGY (TAMIL ENGLISH)

ENVIRONMENTAL MANAGEMENT

Fill In Blanks

1. The interactions between biotic and abiotic factors is called.....

 [Watch Video Solution](#)

2. The science that deals with the study of interactions between biotic and abiotic factors of environment is called.....

 [Watch Video Solution](#)

3. Generally,.....of any material is called its pollution.

 [Watch Video Solution](#)

4. Higher radiation of X-rays can cause.....

 [Watch Video Solution](#)

5. Jivo.....jivanam.

 [Watch Video Solution](#)

6. In human beings, sudden genetic changes are brought about by.....pollution.

 [Watch Video Solution](#)

7. The forest conserved in the name of God is called..... .



[Watch Video Solution](#)

8. Environment consists of basic factors.



[Watch Video Solution](#)

9. Sacred groves are conserved by



[Watch Video Solution](#)

10. More than..... sacred groves have been reported in India.



[Watch Video Solution](#)

11. The World's largest organization engaged in environment activities is..... .

 [Watch Video Solution](#)

12. Habitats of and Are under threat in the Manas Sanctuary.

 [Watch Video Solution](#)

13. Sunderban sanctuary is in

 [Watch Video Solution](#)

14. The occurrence of diversity among the organisms of the same species is called

 [Watch Video Solution](#)

15. tribunal has been established in 2010.

 [Watch Video Solution](#)

16. was responsible for creating forest cover in Kokilamukh jungle.

 [Watch Video Solution](#)

17. In the western ghats, habitats for and of this region have been under threat.

 [Watch Video Solution](#)

18. of the Assam is under threat due to dams and indiscriminate use of water.

 [Watch Video Solution](#)

19. sanctuary of West Bengal is reserved for tigers.

 [Watch Video Solution](#)

20. Giant squirrel is an example of species.

 [Watch Video Solution](#)

21. Out of the total plant species in the entire world 50,000 species are

 [Watch Video Solution](#)

Find The Odd One Out

1. Air, water, animals, minerals.

 [Watch Video Solution](#)

2. Proteins, carbohydrates, fats, water.

 [Watch Video Solution](#)

3. Deer, tiger, frog, lion.

 [Watch Video Solution](#)

4. Water cycle, nitrogen cycle, oxygen cycle, carbon cycle.

 [Watch Video Solution](#)

5. Adverse effects of vision, genetic change, cancerous ulceration, tuberculosis.

 [Watch Video Solution](#)

6. CO_2 , SO_3 , O_3 , ketone.

 [Watch Video Solution](#)

7. Deer, elephant, zebra, wolf.

 [Watch Video Solution](#)

8. CO_2 , dust, ash, asbestos.

 [Watch Video Solution](#)

9. IPCC,IUCN,BNHS,UNEP.

 [Watch Video Solution](#)

10. Asiatic cheetah, himalayan wolf, giant squirrel, pink headed duck.

 [Watch Video Solution](#)

Analogy

1. Mans Sanctuary: Rhino :: Sunderban Sanctuary :.....

 [Watch Video Solution](#)

2. Red panda: Rare species :: Lion tailed monkey:

 [Watch Video Solution](#)

3. Rare species : Musk deer :: Intermediate species :.....

 [Watch Video Solution](#)

4. Endangered species : Lion tailed monkey :: Vulnerable species :.....

 [Watch Video Solution](#)

5. Clause 49 B : Use of articles with animal parts banned :: Clause 49 C
:.....

 [Watch Video Solution](#)

6. Sound pollution Rule : 2000 :: E-waste Rule :.....

 [Watch Video Solution](#)

7. 1980: Forest Conservation Act :: 1986 :.....

 [Watch Video Solution](#)

8. IUCN : International Union for Conservation of Nature :: IPCC:.....

 [Watch Video Solution](#)

9. IPCC: Geneva :: IUCN:.....

 [Watch Video Solution](#)

10. Names of endangered species : Pink pages :: Names of presently safe species :.....

 [Watch Video Solution](#)

1. Manas Sanctuary: Assam:: Sunderbans Sanctuary:

 [Watch Video Solution](#)

2. 1986: Environmental Conservation Act :: 1980:

 [Watch Video Solution](#)

3. Jivo Jivasya Jivanam means that

 [Watch Video Solution](#)

4. Lion tailed monkey is an species.

 [Watch Video Solution](#)

5. Dodo duck is an endangered species.



[Watch Video Solution](#)

6. Sunderban sanctuary is in West Bengal.



[Watch Video Solution](#)

7. National Green Tribunal has been established in 2001.



[Watch Video Solution](#)

8. Names of endangered species is present in green pages .



[Watch Video Solution](#)

1. Wild animals like lion, tiger etc are not important for ecosystem.

 [Watch Video Solution](#)

2. The place where frogs are more, obviously snakes are less in that area.

 [Watch Video Solution](#)

3. The paddy fields are frequently attacked by grasshoppers.

 [Watch Video Solution](#)

4. Human existence is totally impossible without existence of nature.

 [Watch Video Solution](#)

5. Radioactive pollution can cause tuberculosis.

 [Watch Video Solution](#)

6. Forest Conservation Act has been established in 1972.

 [Watch Video Solution](#)

7. Earthquakes are man-made factors affecting environment.

 [View Text Solution](#)

8. Environment is made up of one type of ecosystem.

 [View Text Solution](#)

9. Sound Pollution Control and Prevention Rule was established in 2011.

 [View Text Solution](#)

10. All over the world 76 spots are reported as highly sensitive biodiversity spots.

 [View Text Solution](#)

Food Chain

1. Cow, Tiger, Grass.

 [Watch Video Solution](#)

2. Frog, Insect, Grass, Hawk, Snake.

 [Watch Video Solution](#)

 [Watch Video Solution](#)

3. Tiger, Rabbit, Wolf, Grass.

 [Watch Video Solution](#)

4. Algae, Snake, Insect, Frog, Mongoose.

 [Watch Video Solution](#)

5. Insect, Tree, Fowl, Man.

 [Watch Video Solution](#)

6. Goat, Man, Grass.

 [Watch Video Solution](#)

7. Grasshopper, Snake, Frog, Grass, Eagle.

 [Watch Video Solution](#)

8. Lion, Deer, Grass.

 [Watch Video Solution](#)

9. Insect, Green plant, Frog, Eagle, Snake.

 [Watch Video Solution](#)

Name The Following

1. Secondary Consumers

 [Watch Video Solution](#)

2. Primary Consumers



[View Text Solution](#)

3. Omnivores



[View Text Solution](#)

4. Carnivores



[View Text Solution](#)

5. Abiotic factors



[View Text Solution](#)

6. Autotrophs



[View Text Solution](#)

7. Heterotrophs



[View Text Solution](#)

8. Biotic factors



[View Text Solution](#)

9. Air pollutants



[View Text Solution](#)

10. Eandangered species



[View Text Solution](#)

11. Largest ecosystem



[View Text Solution](#)

12. Rare Species



[View Text Solution](#)

13. Decomposers



[View Text Solution](#)

14. International environment organization.

 [View Text Solution](#)

15. Forest conserved in the name of God.

 [View Text Solution](#)

16. Voluntary Organizations engaged in environmental activities in India.

 [View Text Solution](#)

17. World's largest organization engaged in environmental activities.

 [View Text Solution](#)

18. Diseases caused by radiations



[View Text Solution](#)

19. Water pollutants



[View Text Solution](#)

Make A List Of The Following

1. Animals and plants from jungle ecosystem?



[View Text Solution](#)

2. Animals and plants from grassland ecosystem?



[View Text Solution](#)

3. Animals and plants from pond ecosystem?

 [View Text Solution](#)

Choose And Write The Correct Options

1. How many biodiversity spots are reported all over the World ?

A. 30

B. 34

C. 35

D. 40

Answer: B

 [View Text Solution](#)

2. Which of the following belongs to rare species?

A. Tiger

B. Lion

C. Red panda

D. Lion tailed monkey

Answer: C



[View Text Solution](#)

3. World Biodiversity Day is celebrated on.....

A. 22nd May

B. 5th June

C. 21st March

D. 22nd April

Answer: A



[View Text Solution](#)

4. The Forest Conservation Act was enacted in

A. 1980

B. 1986

C. 1972

D. 1963

Answer: A



[View Text Solution](#)

5. has been established in 2010 for effective implementation of environment related laws.

- A. Forest Conservation Act
- B. Wild life protection Act
- C. Environment conservation Act
- D. Indian Forest Act

Answer: C



[View Text Solution](#)

6. The Chipko centre is a voluntary environmental organization located in.....

- A. Mumbai
- B. Tehri Garhwal
- C. Pune
- D. Trivandrum

Answer: B



View Text Solution

7. The 'Red list' which contains the names of endangered species is prepared by.....

A. WWF

B. IUCN

C. IPCC

D. UNEP

Answer: B



View Text Solution

8. Presently, only% of the Earth's area has been left over with sensitive biodiversity.

A. 3.2

B. 2.3

C. 6.8

D. 15.7

Answer: B



[View Text Solution](#)

9. Is the ecosystem.

A. Ocean

B. Earth

C. Pond

D. Lake

Answer: B



View Text Solution

10. The Molai Jungle is located in Kokilamukh of Jorhat district of

A. Assam

B. Trivandrum

C. Tehri

D. Ahmedabad

Answer: A



View Text Solution

Classify The Following

1. Classify the following into biotic and abiotic factors :

Stone, fungus, soil, green, plants, air, fish, water, sunlight, rat, snake, humidity, frog.



[Watch Video Solution](#)

2. Classify the following into Primary Consumers and Secondary

Consumers : Grasshopper, elephant, frog, deer, fruit eating bats,

fox, tiger, giraffe.



[Watch Video Solution](#)

3. Classify the following into Air Pollutants and Water Pollutants :

Industrial waste, hydrogen sulphide, carbon dioxide, domestic wastes,

sewage, carbon monoxide, dust, asbestos, pesticides used in

agriculture.





[Watch Video Solution](#)

4. Classify the following into Voluntary Organizations and International Environmental Organization : Chipko Centre, Gandhi Peace Foundation, World Wildlife Fund, Bird Life International Centre for Environment Education, Bombay Natural History Society, Green Climate Fund, Kerala Science Literature Council, Intergovernment Panel on Climate Change.



[View Text Solution](#)

5. Classify the following into Producers and Consumers : Grasshopper, Grass, Frog, Green plants, algae, Tulsi, Tiger.



[Watch Video Solution](#)

Define The Following

1. Ecology



[Watch Video Solution](#)

2. Bio-diversity



[View Text Solution](#)

3. Ecosystem



[Watch Video Solution](#)

4. What are autotrophs?



[Watch Video Solution](#)

5. Producers



[Watch Video Solution](#)

6. Consumers



[View Text Solution](#)

7. Primary Consumers



[View Text Solution](#)

8. Secondary Consumers



[Watch Video Solution](#)

9. What is a Habitat ?

 [Watch Video Solution](#)

10. What are decomposers?

 [Watch Video Solution](#)

11. Environment

 [View Text Solution](#)

12. Rare species

 [View Text Solution](#)

13. Vulnerable species

 [View Text Solution](#)

14. What is an endangered species?

 [Watch Video Solution](#)

15. What is genetic diversity?

 [Watch Video Solution](#)

16. Define species diversity.

 [Watch Video Solution](#)

17. What are sacred groves ?



[Watch Video Solution](#)

18. Environmental pollution



[View Text Solution](#)

19. Define food chain.



[Watch Video Solution](#)

20. Draw a food web.



[Watch Video Solution](#)

1. What is ecosystem? What are its different components?

 [View Text Solution](#)

2. What are the types of consumers? What are the criteria for their classification?

 [View Text Solution](#)

3. Write the relationship between lake and birds on tree?

 [View Text Solution](#)

4. What is the difference between food chain and food web?

 [View Text Solution](#)

5. A bird building nest on a tree feeds upon the fishes in nearby pond.

Whether this bird is part of both i.e. tree as well as pond ecosystem?

 [View Text Solution](#)

6. What will be the effect on paddy crop if frog population declines all of a sudden?

 [View Text Solution](#)

7. Number of which consumers will decline and which will increase?

 [View Text Solution](#)

8. What will be the overall effect on the ecosystem?

 [View Text Solution](#)

9. What is an environment?

 [Watch Video Solution](#)

10. What is included in environment?

 [Watch Video Solution](#)

11. Which factors have an effect on the environment?

 [View Text Solution](#)

12. What will happen if number of consumers in environment goes on increasing gradually?

 [View Text Solution](#)

13. What will be the effect of industry established on river bank on the river ecosystem?



View Text Solution

14. What are the types of pollution?



Watch Video Solution

15. What do you mean by natural and artificial pollution?



View Text Solution

16. Collect the names of extinct birds and animals of India?



View Text Solution

17. Which cycles are operated in environment? What is the importance?

 [View Text Solution](#)

18. Which are the different trophic levels in the food chain?

 [View Text Solution](#)

19. What is Smog? State its effects?

 [View Text Solution](#)

20. What do we learn from the story of Jadav Molai Peyang?

 [View Text Solution](#)

1. What is a food chain?



[Watch Video Solution](#)

2. Draw a food web.



[Watch Video Solution](#)

3. What are sacred groves? What is their role in conservation?



[Watch Video Solution](#)

4. Environment Conservation



[View Text Solution](#)

5. Disaster and its management



[View Text Solution](#)

6. Chipko Movement of Bishnoi



[View Text Solution](#)

7. Biodiversity



[View Text Solution](#)

8. Why are green plants called producers ?



[View Text Solution](#)

9. What is the purpose of environmental Conservation Act, 1986 ?

 [View Text Solution](#)

10. What is the role of Ministry of Environment and Forests ?

 [View Text Solution](#)

Chart Table

1. Now a day, we are observing the environmental degradation everywhere. Complete the flow chart given besides with the help of environment.

 [View Text Solution](#)

2. Observe the environment around you. Complete the following flow chart.

 [View Text Solution](#)

3. Based on the air pollution, water pollution and soil pollution, complete the following chart.

 [View Text Solution](#)

4. Fill up the blank boxes and display the completed chart.

 [View Text Solution](#)

Give Scientific Reasons

1. Domestic animals like cockroaches, lizards are ecologically important.



[View Text Solution](#)

2. We should take care of the environmental components of our surroundings.



[View Text Solution](#)

3. The Earth is the largest ecosystem.



[View Text Solution](#)

4. Environmental problems are increasing in the recent times.



[View Text Solution](#)

5. Green plants are called autotrophs.



[View Text Solution](#)

 [View Text Solution](#)

6. Grasshopper is a primary consumer.

 [View Text Solution](#)

7. The protection and conservation of wildlife is necessary.

 [View Text Solution](#)

8. The flow of energy in the ecosystem unidirectional.

 [View Text Solution](#)

9. Decomposers are crucial biotic factors in an ecosystem.

 [View Text Solution](#)

10. In the ecosystem wild animals like lions, tigers, are important.

 [View Text Solution](#)

Explain The Questions

1. Explain various causes of environmental pollution?

 [View Text Solution](#)

2. Enlist incidences of radioactive pollution? Write their effects.

 [View Text Solution](#)

3. Write the types and examples of biodiversity.

 [View Text Solution](#)

4. How are threatened species classified ?



[View Text Solution](#)

5. What are the different types of threatened species ?



[View Text Solution](#)

6. What are abiotic factors ? Write examples.



[View Text Solution](#)

7. Enlist the effects of excessive use of natural resources.



[View Text Solution](#)

8. Suggest some measures at individual level, a person can follow to protect the environment.

 [View Text Solution](#)

9. How can bio-diversity be conserved?

 [View Text Solution](#)

10. How do the interactions take place in the biotic and abiotic factors of ecosystem?

 [View Text Solution](#)

11. Explain the role of producers in the food chain ?

 [View Text Solution](#)

12. What is Eltonian pyramid?

 [Watch Video Solution](#)

13. What happens if there are no decomposers on the Earth ?

 [View Text Solution](#)

14. Pollution depletes the quality of air. Explain with suitable example.

 [View Text Solution](#)

15. How do butterflies contribute to environmental balance?

 [View Text Solution](#)

16. Recognize the following food chain- Describe the ecosystem to which it belongs. Grasshopper → snake → paddy field → Eagle → Frog.

 [View Text Solution](#)

17. What is the meaning of "Jivo Jivasya Jivanam"?

 [View Text Solution](#)

Answer In Detail

1. Explain the statement- 'We have got this Earth planet on lease from our future generations and not as ancestral property from our ancestors'.

 [View Text Solution](#)

2. How will you justify that overcoming the pollution is a powerful way of environmental management?

 [View Text Solution](#)

3. Why is it said that pollution control is important?

 [View Text Solution](#)

4. Which projects will you run in relation to environmental conservation? How?

 [View Text Solution](#)

5. What would be your role in environment management?

 [View Text Solution](#)

6. Write the names of biodiversity hot spots?



[View Text Solution](#)

7. Which are the reasons for endangering the species of plants and animals? How can we save those?



[View Text Solution](#)

8. Why does human have an important place in the environment ?



[View Text Solution](#)

9. Mahatma Gandhi said, 'The Earth is sufficient to satisfy everyone's need but not the greed' Explain?



[View Text Solution](#)

Explain The Diagram

1. What are the meanings of following symbols? Write your role accordingly?



 [View Text Solution](#)

2. 

 [View Text Solution](#)

3. 

 [View Text Solution](#)

4. Some symbols are given below. Find the meaning of those symbols in relation to environment conservation. Make a list of other such symbols.



[View Text Solution](#)

5. 



[View Text Solution](#)

6. 



[View Text Solution](#)

7. 

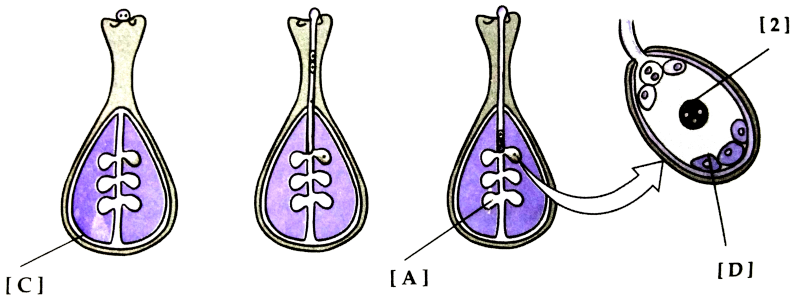


[View Text Solution](#)

8. 

 [View Text Solution](#)

9. Observe the figure and answer the following questions.



(i) Label (A) to (D)

(ii) What process is shown in the diagram ?

(iii) Explain the process

 [Watch Video Solution](#)

10. Write the name and category of each of the component shown in picture.

 [View Text Solution](#)

11. What is necessary to convert this food chain into food web?

 [View Text Solution](#)

12. Prepare a food web of at least 3 food chain.

 [View Text Solution](#)

13. Who is this Man in the above pictue?



 [View Text Solution](#)

14. what was his contribution for ?



[View Text Solution](#)

Assignment 4

1. Fill in the blanks: The World Biodiversity Day is



[View Text Solution](#)

2. Complete the analogy: Rare species : Musk deer :: Indeterminate species :.....



[View Text Solution](#)

3.has been established in 2010 for effective implementation of environment related laws.

- A. Forest Conservation Act
- B. Wild life protection Act
- C. Environment conservation Act
- D. Indian Forest Act

Answer:

 [View Text Solution](#)

4. Define biodiversity.

 [Watch Video Solution](#)

5. Secondary Consumers

 [Watch Video Solution](#)