



GEOGRAPHY

BOOKS - FULL MARKS GEOGRAPHY (HINGLISH)

TOPOGRAPHICAL MAPS

**Ncert Textbook Questions With Answers Answer
The Following Question In About 30 Words**

1. What are topographical maps?



[View Text Solution](#)

Ncert Textbook Questions With Answers

1. Name the organisation which prepares the topographical maps of India.



[View Text Solution](#)

2. Which are the commonly used scales for mapping our country used by the Survey of

India?



[View Text Solution](#)

3. What are contours?



[View Text Solution](#)

4. What does the spacing of contours indicate?



[View Text Solution](#)

5. What are conventional signs?



[View Text Solution](#)

6. Write short notes on

Contours



[View Text Solution](#)

7. Write short notes on

'Marginal Information' in Topographical sheets



[View Text Solution](#)

8. Write short notes on

The Survey of India



[View Text Solution](#)

9. Explain what is meant by 'map interpretation' and what procedure is followed for its interpretation.



[View Text Solution](#)

10. If you are interpreting the cultural features from a topographical sheet, what information would you like to seek and how would you derive this information? Discuss with the help of suitable examples.



[View Text Solution](#)

11. Draw the conventional signs and symbols for the following features-

(i) International Boundary (ii) Bench Mark (iii)

Villages

(iv) Metalled Road (v) Footpath with bridges

(vi) Places of Worship

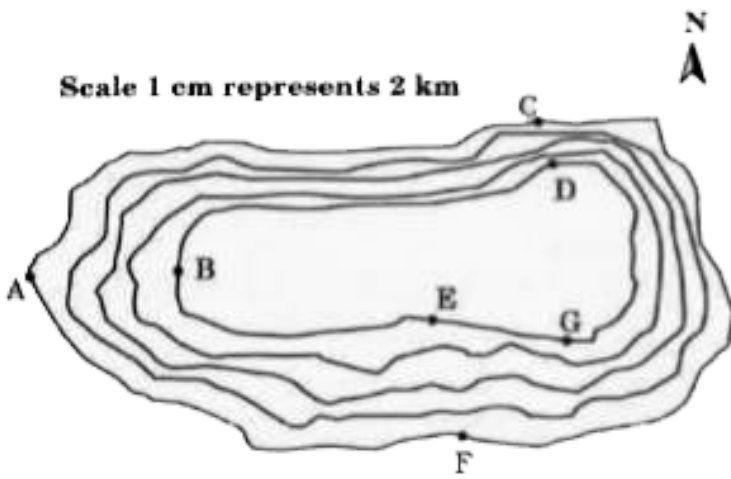
(vii) Railway line



[View Text Solution](#)

Exercise Exercise A

1. Study the contour pattern and answer the following questions.

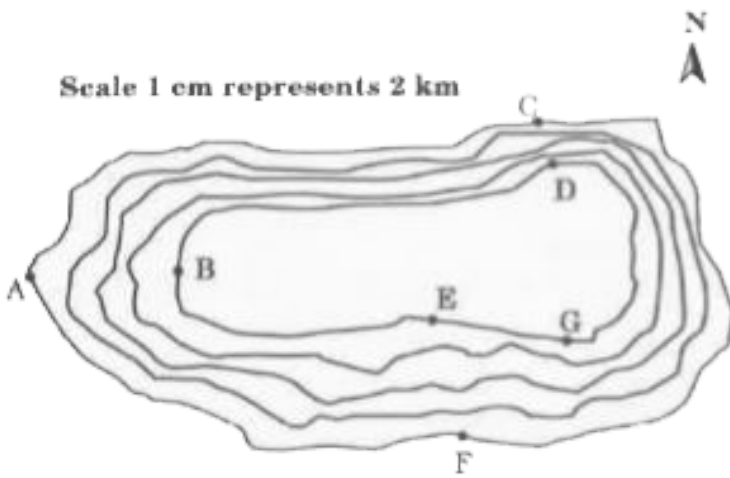


Find out the contour interval in the map.



[View Text Solution](#)

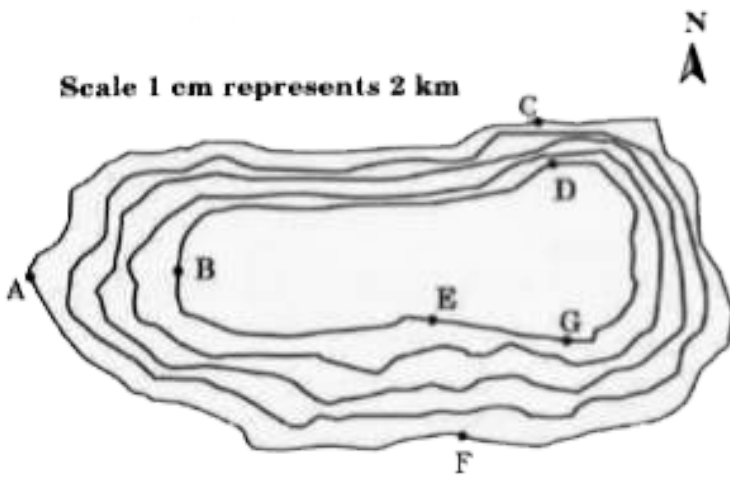
2. Study the contour pattern and answer the following questions.



Find out the map distance between E and F and convert it into ground distance.

 [View Text Solution](#)

3. Study the contour pattern and answer the following questions.

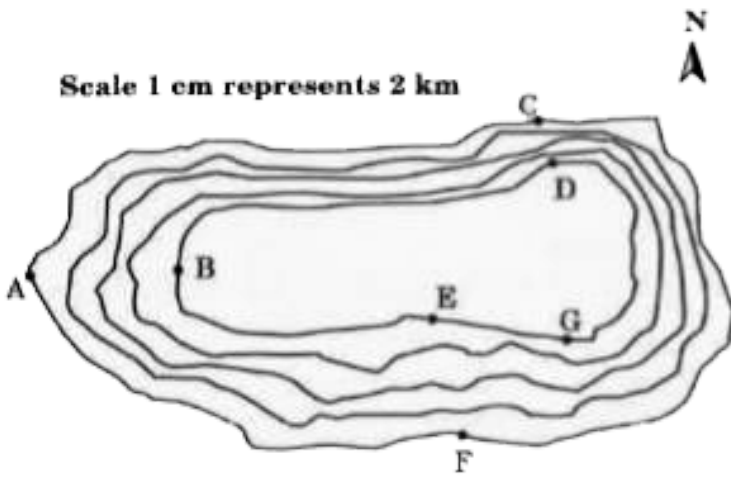


Name the type of slope between A and B, C and D and E and F.

 [View Text Solution](#)

4. Study the contour pattern and answer the following questions.

Scale 1 cm represents 2 km



Find out the direction of E, D and F from G.



[View Text Solution](#)

Exercise Exercise B

1. Study the extract from the topographical sheet No. 63K/12, as shown in the figure below and answer the following questions.



R.F. 1 : 50,000

Fig. Part of the Topographical Sheet No. 63K/12

Convert 1:50,000 into a statement of scale.



[View Text Solution](#)

2. Study the extract from the topographical sheet No. 63K/12, as shown in the figure below and answer the following questions.



R.F. 1 : 50,000

Fig. Part of the Topographical Sheet No. 63K/12

Name the major settlements of the area.



[View Text Solution](#)

3. Study the extract from the topographical sheet No. 63K/12, as shown in the figure below and answer the following questions.



R.F. 1 : 50,000

Fig. Part of the Topographical Sheet No. 63K/12

What is the direction of flow of the river Ganga?



[View Text Solution](#)

4. Study the extract from the topographical sheet No. 63K/12, as shown in the figure below and answer the following questions.



R.F. 1 : 50,000

Fig. Part of the Topographical Sheet No. 63K/12

At which one of the banks of river Ganga, Bhatauli is located?

 [View Text Solution](#)

5. Study the extract from the topographical sheet No. 63K/12, as shown in the figure below and answer the following questions.



R.F. 1 : 50,000

Fig. Part of the Topographical Sheet No. 63K/12

What is the pattern of rural settlements along the right bank of river Ganga?



6. Study the extract from the topographical sheet No. 63K/12, as shown in the figure below and answer the following questions.



R.F. 1 : 50,000

Fig. Part of the Topographical Sheet No. 63K/12

Name the villages/settlements where Post Office/Post and Telegraph Office are located?



[View Text Solution](#)

7. Study the extract from the topographical sheet No. 63K/12, as shown in the figure below and answer the following questions.



R.F. 1 : 50,000

Fig. Part of the Topographical Sheet No. 63K/12

What does the yellow colour in the area refer to?



View Text Solution

8. Study the extract from the topographical sheet No. 63K/12, as shown in the figure below and answer the following questions.



Fig. Part of the Topographical Sheet No. 63K/12

What means of transportation is used to cross the river by the people of Bhatauli village ?



[View Text Solution](#)

Exercise Exercise C

1. Study the extract for topographical sheet 63K/12 shown in the figure given below and answer the following questions.



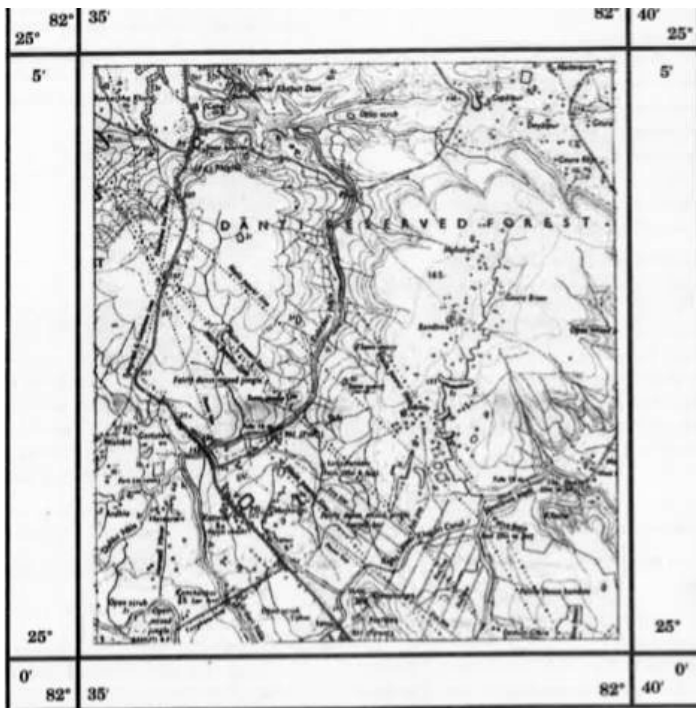
R.F. 1 : 50,000
 Fig: Part of the Topographical Sheet No. 63K/12

Give the height of the highest point on the map.



[View Text Solution](#)

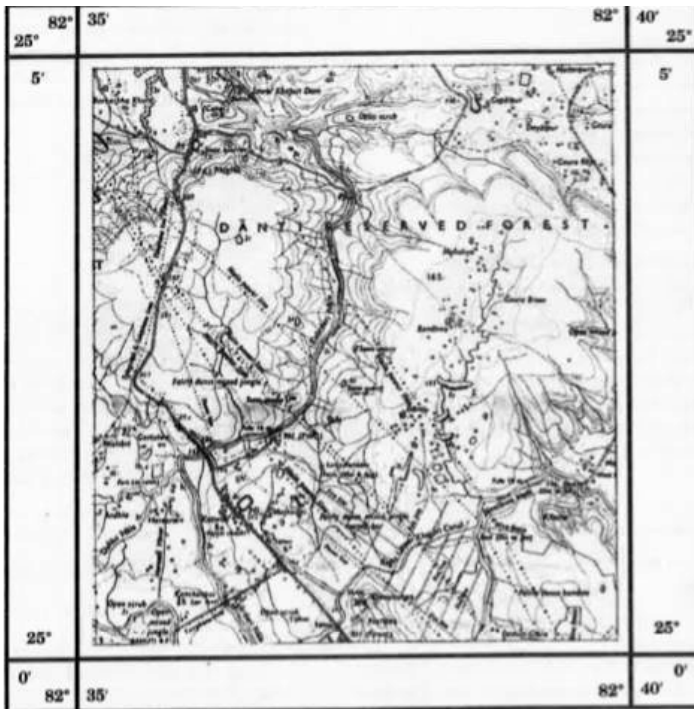
2. Study the extract for topographical sheet 63K/12 shown in the figure given below and answer the following questions.



R.F. 1 : 50,000
Fig: Part of the Topographical Sheet No. 63K/12

River Jamtihwa Nadi is flowing through which quarter of the map?

3. Study the extract for topographical sheet 63K/12 shown in the figure given below and answer the following questions.



R.F. 1 : 50,000

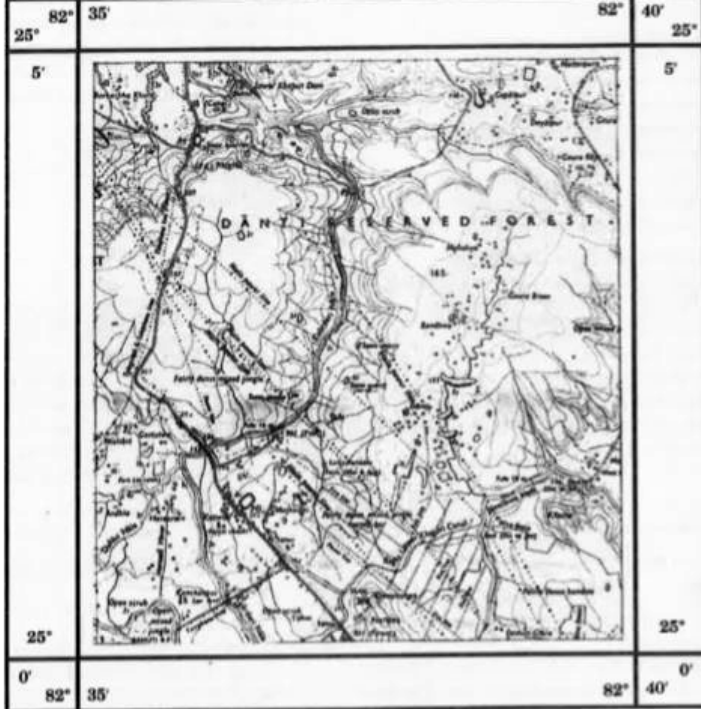
Fig: Part of the Topographical Sheet No. 63K/12

Which is the major settlement located in the east of the Kuardari Nala?



[View Text Solution](#)

4. Study the extract for topographical sheet 63K/12 shown in the figure given below and answer the following questions.



R.F. 1 : 50,000
Fig: Part of the Topographical Sheet No. 63K/12

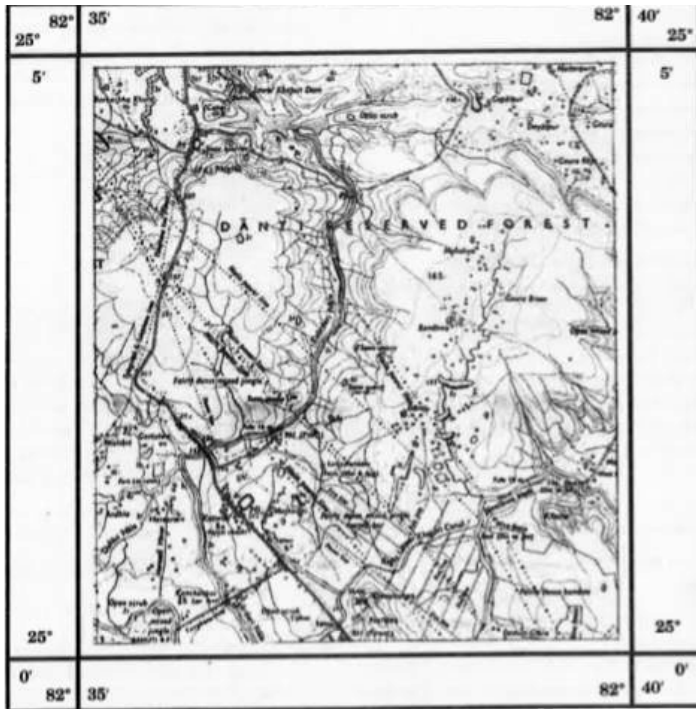
What type of settlement does this area have?



[View Text Solution](#)

5. Study the extract for topographical sheet 63K/12 shown in the figure given below and

answer the following questions.



R.F. 1 : 50,000

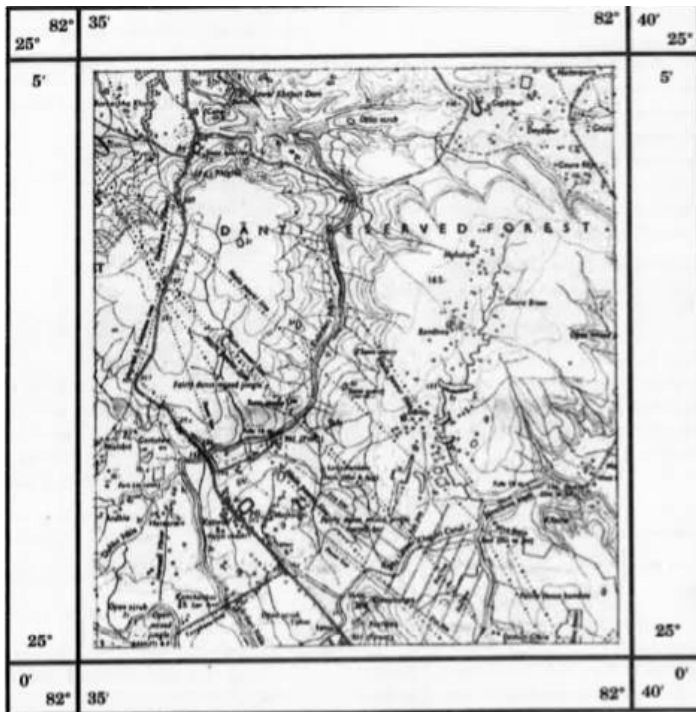
Fig: Part of the Topographical Sheet No. 63K/12

Name the geographical feature represented by white patches in the middle of Sipu Nadi.



[View Text Solution](#)

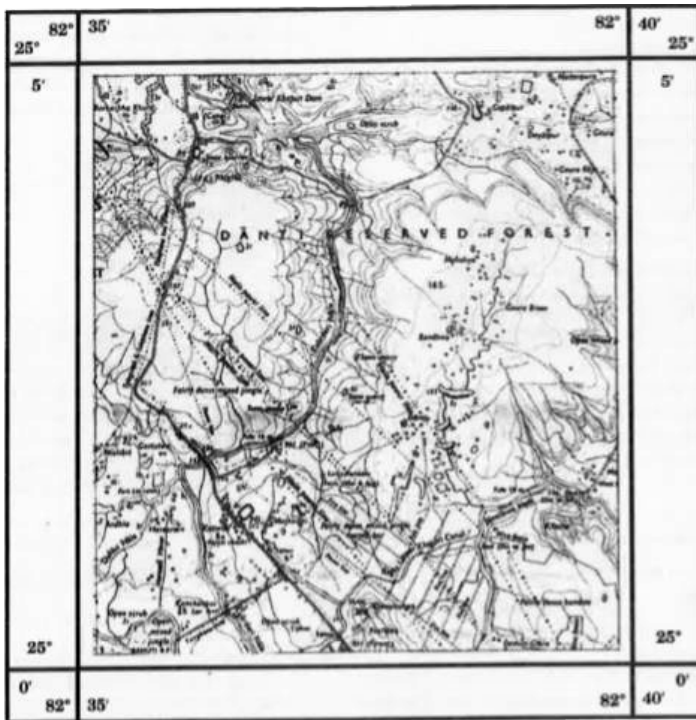
6. Study the extract for topographical sheet 63K/12 shown in the figure given below and answer the following questions.



R.F. 1 : 50,000
Fig: Part of the Topographical Sheet No. 63K/12

Name the two types of vegetation shown on part of the topographical sheet.

7. Study the extract for topographical sheet 63K/12 shown in the figure given below and answer the following questions.



R.F. 1 : 50,000

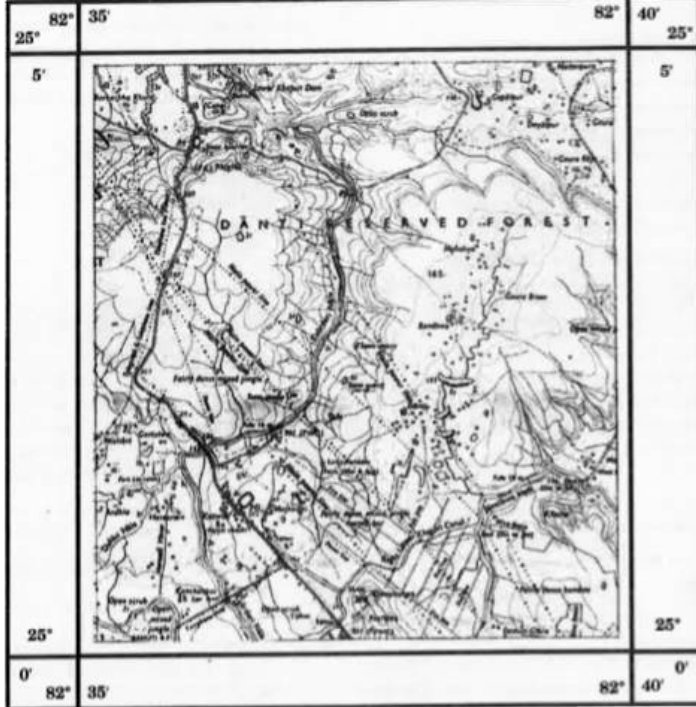
Fig: Part of the Topographical Sheet No. 63K/12

What is the direction of the flow of the Kuardari?



[View Text Solution](#)

8. Study the extract for topographical sheet 63K/12 shown in the figure given below and answer the following questions.



R.F. 1 : 50,000
 Fig: Part of the Topographical Sheet No. 63K/12

In which part of the sheet area is Lower Khajuri Dam located?

 [View Text Solution](#)

Additional Questions With Answers Multiple Choice Questions

1. Which of the following is not a type of settlements?

A. Compact

B. Dispersed

C. Linear

D. Polar.

Answer: A::D





[View Text Solution](#)

2. Which of the following is not a type of urban towns?

A. Mountain towns

B. Capital towns

C. Beauty towns

D. Religious towns.

Answer: A::B::C



[View Text Solution](#)

3. A widely stretched flat-topped high land, with relatively steeper slopes, rising above the adjoining plain or sea is called a:

A. Mountain

B. Valley

C. Spur

D. Plateau.

Answer: A::D



View Text Solution

4. A sudden and more or less perpendicular descent of water from a considerable height in the bed of a river is called a:

A. Spur

B. Valley

C. Waterfall

D. Plateau.

Answer: A::B::C::D



[View Text Solution](#)

5. A tongue of land, projecting from higher ground into the lower is called a:

A. Spur

B. Valley

C. Waterfall

D. Plateau.

Answer: A



[View Text Solution](#)

Additional Questions With Answers Very Short Answer Type Questions

1. How are relief maps different from topographical maps?

 [View Text Solution](#)

2. What methods are used to present topography?





[View Text Solution](#)

3. What are Hachure?



[View Text Solution](#)

4. Define Contour lines.



[View Text Solution](#)

5. Differentiate between vertical interval and horizontal distance.



[View Text Solution](#)

6. What is a Topographic Map?



[View Text Solution](#)

7. Explain different types of settlements shown on a topographical sheet.



[View Text Solution](#)

8. How is density of settlement related to food supply?



[View Text Solution](#)

9. What are linear settlements'?



[View Text Solution](#)

Additional Questions With Answers Short Answer Type Questions

1. What are the features of contours?

 [View Text Solution](#)

2. Explain how do we interpret a topographical sheet?

 [View Text Solution](#)

3. Under which heads is a topographical sheet interpreted? Explain each in short.



[View Text Solution](#)

4. What factors determine the site of settlements?



[View Text Solution](#)

5. Write a short note on map interpretation.



[View Text Solution](#)

Additional Questions With Answers Long Answer Type Questions

1. Explain the steps involved in drawing a Cross-section from their contours in different topographical landforms.



[View Text Solution](#)

2. Under which heads are topographical maps explained?

 [View Text Solution](#)

3. Explain about identification of cultural features from topographical sheets

 [View Text Solution](#)

Additional Questions With Answers Viva Questions

1. What is the purpose of topographical maps?



[View Text Solution](#)

2. Who prepares the topographical maps in India for the entire country?



[View Text Solution](#)

3. What are relief features of the earth?



[View Text Solution](#)

4. Name some of the methods used to depict relief features of the earth. Which of these are most common?



[View Text Solution](#)

5. Name the slope if contours show following features:

(i) Contours in this type of slope are widely spaced in the lower parts and are closely

spaced in the upper parts.

(ii) The contours are widely spaced in the upper parts and are closely spaced in the lower parts.

(iii) The contours representing this type of slope are far apart.

(iv) The contours are closely spaced



[View Text Solution](#)