



# BIOLOGY

## BOOKS - GURUKUL BOOKS & PACKAGING BIOLOGY (HINGLISH)

**MARCH 2016**

### Section I

1. The phenotypic ratio of incomplete dominance is .....

A. 2: 1

B. 1: 2: 1

C. 1: 1: 1

D. 1: 1: 2

**Answer: A::B**



**View Text Solution**

2. The number of purines in a segment of DNA molecule is 68 . What will be the number of pyrimidines in this segment ?

A. 34

B. 43

C. 68

D. 86

**Answer:**



**View Text Solution**

**3. Alcoholic fermentation is brought about by**

.....

A. Lactobacillus

B. Saccharomyces

C. Trichoderma

D. Streptomyces

**Answer: A::C**



**View Text Solution**

4. Which of the following is not a photosynthetic pigment ?

A. Carotene

B. Xanthophyll

C. Phycobillins

D. Anthocyanin

**Answer: A::C**



**View Text Solution**

5. Which one of the following is a stop codon ?

A. UAG

B. UAC

C. AUG

D. UCA

**Answer: A**



**View Text Solution**

6. Pyruvate undergoes oxidative decarboxylation to produce .....

A. 2-PGA

B.  $\alpha$ -Ketone

C. Succinyl-Co-A

D. Acetyl-Co-A

**Answer: A::C**



**Watch Video Solution**

7. Which day is observed as world Environment Day ?

A. 21st may

B. 5 th june

C. 25 th September

D. *13th December*

**Answer:**



**Watch Video Solution**

**8. What is test cross ?**



**View Text Solution**



**9. What is mycoherbicide?**



**Watch Video Solution**

**10. Anticodon**



**Watch Video Solution**

**11. What is Humifucation ?**



**Watch Video Solution**

12. How  $CO_2$  makes idies puffy ?



[View Text Solution](#)

13. What is ecological succession ?



[Watch Video Solution](#)

14. Sketch and label ultrastructure of chloroplast.



[Watch Video Solution](#)

**15.** Write a note on mutational breeding.



**Watch Video Solution**

**16.** Enlist the advantages of biogas.



**Watch Video Solution**

**17.** THE CARBON CYCLE



**Watch Video Solution**

**18.** Give floral adaptations for chiropterophily.



**Watch Video Solution**

**19.** Why the ratio in pleiotropy is 2 :1 Explain it with example.



**Watch Video Solution**

**20.** Give the schematic representation of an overall view of Krebs cycle.



[Watch Video Solution](#)

21. DIFFERENCE BETWEEN CYCLIC AND NON-CYCLIC PHOSPHORYLATION



[Watch Video Solution](#)

22. Give diagrammatic representation to show a perfect pairing and any and any two Wobble pairings.



[View Text Solution](#)

**23.** What is double fertilisation ? Describe the process in brief.



**Watch Video Solution**

**24.** Define r-DNA technology. Give the basic steps in r DNA technology and give any three' examples of the therapeutic products proeduced by r - DNA technology .



**View Text Solution**

## Section II

1. Select and write the most appropriate answer from the given alternatives for each for sub-question :

If centromere is situated in the middle of the chromosome , it is called .....

- A. metacentric
- B. acrocentric
- C. submetacentric
- D. telocentric

**Answer:**



**Watch Video Solution**

2. Which one of the following is useful in treatment of burns and wound heading ?

A. Tissue Plasminogen activator

B. Tissue growth factor

C. *DNA<sub>s</sub>e*

D. Bovine growth factor



**Answer:**



**View Text Solution**

3. Erythroblastosis foetalis is caused when mother is .....

A.  $Rh^{+ve}$

B. with antibody 'a'

C.  $Rh^{-ve}$

D. with antibody 'b'

**Answer:**



**Watch Video Solution**

4. Deposition of fatty substances in the lining of arteries results in .....

- A. arteriosclerosis
- B. atherosclerosis
- C. hyperglycemia
- D. hypotension

**Answer:**



**Watch Video Solution**

5. Struggle between cow and cow for getting grass is called .....

- A. inter-specific
- B. environmental struggle
- C. struggle against natural calamities
- D. intra-specific struggle

**Answer:**



**View Text Solution**

**6.** In which type of adaption forelimbs are modified into wings ?

- A. Aquatic adaption
- B. Volant adaption
- C. Arboreal adaption
- D. Cursorial adapiton

**Answer:**



**Watch Video Solution**

7. Mating of more closely related individuals within the same breed for 4-6 generation is called:-

- A. in-breeding
- B. out-breeding
- C. out-crossing
- D. cross- breeding

**Answer:**



**Watch Video Solution**

**8.** Visit of a veterinary doctor to a dairy farm is mandatory.



**Watch Video Solution**

**9.** Answer in sentence each :

Why aquatic animals can afford to be ammonotelic,



[Watch Video Solution](#)

**10.** Answer in sentence each :

Why PUC is mandatory for all vehicles ?



[View Text Solution](#)

**11.** Organic evolution.



[Watch Video Solution](#)

**12.** Give the genotype of Turner's syndrome



**Watch Video Solution**

**13.** Answer in sentence each :

Write down the full form of R. F.L .P



**View Text Solution**

**14.** Sketch and label T.S of vein



**View Text Solution**

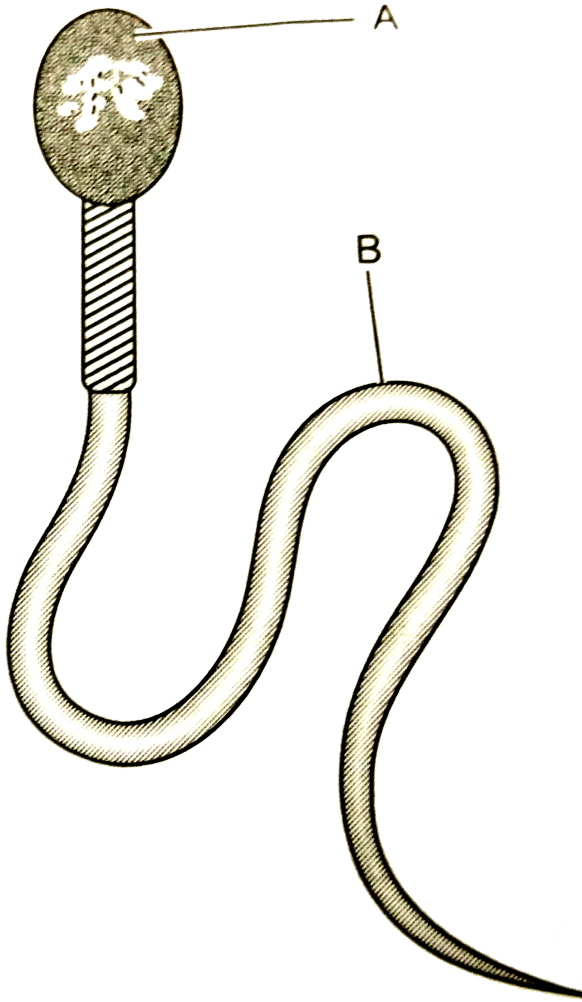


**15.** Give any two factors responsible for genetic variation.



**Watch Video Solution**

**16.** Give the name and function of A and B from the diagram given below.



 [Watch Video Solution](#)

**17.** Write a note on artificial acquired active immunity.



**Watch Video Solution**

**18.** Give the economic importance of fisheries



**Watch Video Solution**

**19. SEX DETERMINATION IN HUMANS**



**Watch Video Solution**

**20.** Describe steady population with the help of a pyramid.



**Watch Video Solution**

**21.** Illustrate any three genes which can be used in gene therapy .



**View Text Solution**

**22.** Describe the structure of a human kidney with the help of a labelled diagram.



**Watch Video Solution**

**23.** With the help of a diagram representation explain the process of gametogenesis .



**View Text Solution**

**24.** Describe the structure of cerebrum .Add a note on the function.



**View Text Solution**