



BIOLOGY

BOOKS - GURUKUL BOOKS & PACKAGING BIOLOGY (HINGLISH)

MARCH 2017

Section I

1. The genotype of human blood group B is

.....

A. $I^A i$

B. $I^B i$

C. $I^A I^A$

D. ii

Answer: B



View Text Solution

2. Breakdown of detritus into smaller particles
is called

A. Fragmentation

B. Leaching

C. Catabolism

D. Humification

Answer: C



Watch Video Solution

3. In Brassica (rapeseed, mustard)

Variety is resistant to Aphids.

A. Pusa A-4

B. Pusa Gaurav

C. Pusa Sawni

D. Pusa Shubra

Answer: B



Watch Video Solution

4. Chloromycetin is obtained from

A. *Sclerotiana libertine*

B. *Aspergillus niger*

C. *Streptomyces griseus*

D. *Streptomyces venezuelae*

Answer: D



Watch Video Solution

5. Theenzyme is used to cut DNA at specific point.

A. DNA polymerase

B. Alkaline phosphatase

C. Restriction endonuclease

D. DNA ligase

Answer: C



Watch Video Solution

6. R.Q for proteins is about

A. 0.7

B. 0.8

C. 0.9

D. 1.0

Answer: C



Watch Video Solution

7. Ozone depletion is occurring widely in the strato-sphere, it leads to ozone hole caused mainly due to

A. Ethylene

B. Methane

C. CFCs

D. CO_2

Answer: C



Watch Video Solution

8. Give an example of the source of thermostable enzyme DNA polymerase.



Watch Video Solution

9. Give any example of the non-edible or poisonous mushroom studied by you.



[Watch Video Solution](#)

10. Name the secondary metabolites in *Catharanthus roseus*.



[Watch Video Solution](#)

11. What is meant by ecological succession ?



[Watch Video Solution](#)

12. Name the organism and enzyme which bring about alcoholic fermentation of sucrose.



[Watch Video Solution](#)

13. Enlist any 'two' floral adaptations in salvia.



[Watch Video Solution](#)

14. Give schematic representation of carbon cycle.



Watch Video Solution

15. What is a 'test cross' ? Explain significance of a test cross.



Watch Video Solution

16. Explain 'Wobble hypothesis' with the help of a suitable diagram.



View Text Solution

17. What is a biopatent? Give any two examples.

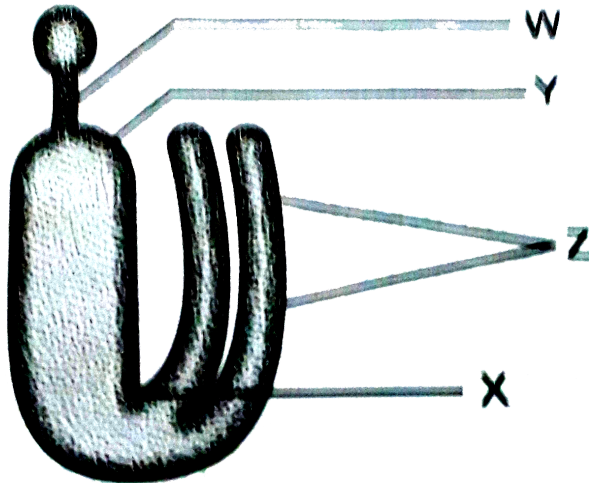
OR

What is biopatent? Explain it with a suitable example.



Watch Video Solution

18. Name the parts W, X, Y and Z from the following figure :



[Watch Video Solution](#)

19. Explain replication of bacteriophage with the help of a suitable diagram.



View Text Solution

20. What are 'biofertilizers' ? Explain them with suitable examples.



Watch Video Solution

21. Anemophily and Entomophily.



[Watch Video Solution](#)

22. Draw a diagram of the longitudinal section of a mature anatropous ovule and label any ten parts in it.



[Watch Video Solution](#)

23. What is 'photophosphorylation' ? Describe non-cyclic photophosphorylation with schematic representation. Give its significance.





[View Text Solution](#)

24. What is 'RNA' ? Explain different types of non-genetic RNA with diagrams and functions.



[View Text Solution](#)

Section II

1. Which of the following has normal vision ?

A. $X^c X^c$

B. $X^c Y$

C. $X^C X^c$

D. $X^c Y^c$

Answer: C



View Text Solution

2. In DNA fingerprinting technique, radioactive DNA probe is obtained from of female banded krait snake.

A. X chromosome

B. Y chromosome

C. X and Y chromosomes

D. Autosome

Answer: B



Watch Video Solution

3. Abortion in the first trimester of pregnancy may occur due to lack of

A. aldosterone

B. testosterone

C. oestrogen

D. progesterone

Answer: D



Watch Video Solution

4. Contribute about 60% of the total volume of the semen.

- A. Prostate glands
- B. Cowper's glands
- C. Seminal vesicles
- D. Bartholin's glands

Answer: C



Watch Video Solution

5. Lowering of blood pressure is related with the producing of

A. ADH

B. ANF

C. GH

D. LH

Answer: B



Watch Video Solution

6. Humulin is used to treat.....

A. Diabetes mellitus

B. Diabetes insipidus

C. Hepatitis

D. Nephritis

Answer: B



View Text Solution

7. The modification of original genetic make-up is focussed by

A. PCR

B. DNA fingerprinting

C. Electrophoresis

D. Gene therapy

Answer: B



Watch Video Solution

8. Which material is used for isolation of DNA in fingerprinting technique ?



Watch Video Solution

9. Give significance of podocyte.



Watch Video Solution

10. Commensalism.



Watch Video Solution

11. What is the function of acrosome ?



Watch Video Solution

12. Distinguish between X and Y chromosomes.

(Mention any 'two' points.)



Watch Video Solution

13. Give any 'two' examples of endangered species.



Watch Video Solution

14. Sketch and label the 'Structure of HIV'.



Watch Video Solution

15. Write a note on erythrocytes.



Watch Video Solution

16. What are the uses of vaccine ?



View Text Solution

17. Explain the process of budding in Hydra with the help of labelled diagram.



Watch Video Solution

18. Name the species used in sericulture. Name the stages in the life cycle of a silk moth in cyclic form.



Watch Video Solution

19. Explain ABO blood group system in human being with a suitable chart.



Watch Video Solution

20. Describe diagrammatic representation of age structure showing declining population.



Watch Video Solution

21. With the help of a neat and labelled diagram, describe reflex arc.



[View Text Solution](#)

22. Sketch and label 'human male reproductive system.'



[View Text Solution](#)

23. Enlist human endocrine glands.

Describe the T.S. of thyroid gland and add a note on deficiency of thyroxine.



View Text Solution

24. Define 'evolution'. Give the principles of Darwin's theory of natural selection. Mention any 'one' objection to it.



Watch Video Solution