



# CHEMISTRY

## PHYSICAL, INORGANIC, AND ORGANIC CHEMISTRY

### CHEMISTRY IN EVERYDAY LIFE

#### Organic Chemistry Chemistry In Every Day Life

1. Which is the correct statement about birth control pills?

A. Contain estrogen only

B. Contain progesterone only.

C. Contain a mixture of estrogen and progesterone derivatives

D. Progesterone enhances ovulation.

**Answer: 3**



**Watch Video Solution**

2. Which one of the following is employed as antihistamine ?

- A. Chloramphenicol
- B. Diphenhydramine
- C. Norothindrone
- D. Omeprazole

**Answer: 2**



**Watch Video Solution**

3. Green chemistry means such reactions which

A. produce colour during reactions

B. reduce the use and production of hazardous chemicals

C. are related to the depletion of ozone layer

D. study the reaction in plants

**Answer: 2**



**Watch Video Solution**

4. Which of the following is not an antiseptic drug ?

A. Iodoform

B. Dettol

C. Gemmexane

D. Gentian violet

**Answer: 3**



**Watch Video Solution**

5. A narrow spectrum antibiotic is active against

A. gram positive or gram negative bacteria

B. gram negative bacteria only

C. single organism or one disease.

D. both gram positive and gram negative bacteria.

**Answer: 1**



**Watch Video Solution**

6. Antibiotic action of Dettol is due to to terpineol and

A. Chlorobenzene

B. Chloroxyleneol

C. Chloroquine

D. Chloramphenicol

**Answer: 2**



**Watch Video Solution**

7. A composite solid propellant is :

A.  $N_2O_4$  + acrylic rubber

B.  $N_2O_4$  + monomethylhydrazine  
(*MMH*)

C. Polyurethane + ammonium perchloride

D. Nitrocellulose + nitroglycerine

**Answer: 3**



**Watch Video Solution**



8. Compound which is added to soap to impart antiseptic properties \_\_\_\_\_.

A. sodium lauryl sulphate

B. sodium dodecylbenzenesulphonate

C. rosin

D. bithional

**Answer: 2**



**Watch Video Solution**

9. The antibiotic used for curing tuberculosis is :

A. Penicillin

B. Streptomycin

C. Tetracycline

D. Chloromycetin

**Answer: 2**



**Watch Video Solution**

10. Which of the following is an azo dye ?

A. orange – *I*

B. Malachite green

C. Indigo

D. Martius yellow

**Answer: 1**



**Watch Video Solution**

11. Which one is an acidic dye ?

A. Methyl orange

B. Congo red

C. Orange – *I*

D. All the three

**Answer: 4**



**Watch Video Solution**

**12.** Which of the following represents a double base propellant ?

A. Nitromethane

B. Nitrocellulose + nitroglycerine

C.  $N_2O_4$  + monomethylhydrazine

D. Liquid  $H_2$  + liquide  $O_2$

**Answer: 2**



**Watch Video Solution**

**13.** Which of the classifications of drugs is useful for doctors?

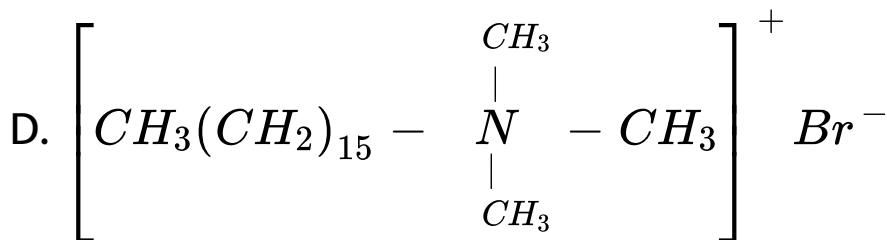
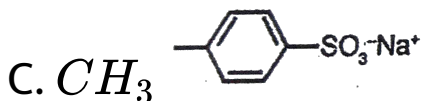
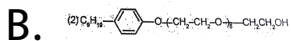
- A. on the basis of chemical structure
- B. on the basis of drug action.
- C. on the basis of molecular targets
- D. on the basis of pharmacological effect.

**Answer: 3**



**Watch Video Solution**

**14.** Which of the following is an example of liquid dishwashing detergent ?



**Answer: 2**



**Watch Video Solution**

**15. Chloroamphenicol is an :**

A. antifertility drug

B. antihistamines

C. antiseptic and disinfectant

D. antibiotic – broad spectrum

**Answer: 2**



**Watch Video Solution**

**16.** Which of the following enhances leathering property of soap?



A. Sodium carbonate

B. Sodium rosinate

C. Sodium stearate

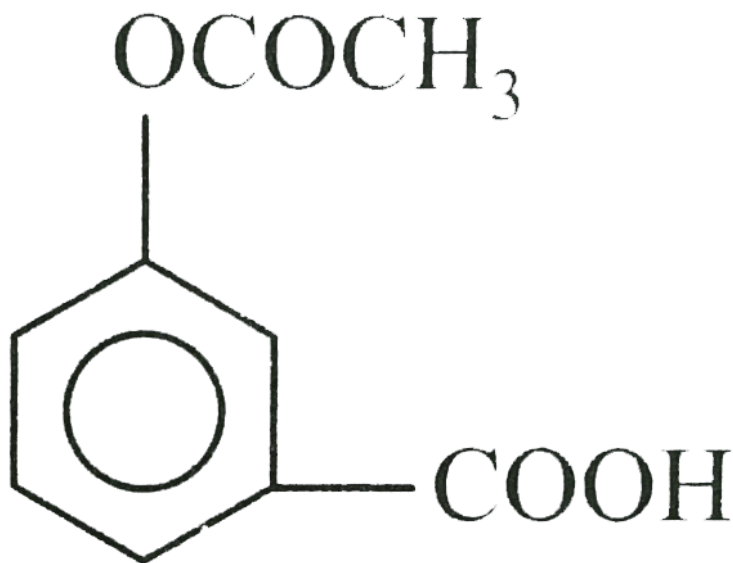
D. Trisodium phosphate

**Answer: 2**



**Watch Video Solution**

17. The compound is used as



A. Antiseptic

B. Antibiotic

C. Analgesic

D. Pesticides

**Answer: 3**



**Watch Video Solution**

**18.** Which one of the following is employed as a tranquilizer ?

A. Equanil

B. Naproxen

C. Tetracycline

D. Chlorpheninamine

**Answer: 1**



**Watch Video Solution**

**19.** Which of the following is not a target molecule for drug function in body ?

A. Carbohydrates

B. Lipids

C. Vitamins

D. Proteins

**Answer: 3**



**Watch Video Solution**

**20.** The "saponification value " of an oil or fat is measured in term of



**Answer: 2**



**Watch Video Solution**

21. The pesticide DDT slowly changes to

- A.  $CCl_3 - CHO$  and chlorobenzene
- B.  $p, p'$  – Dichlorodiphenylethene
- C.  $p, p'$  – Dichlorodiphenyldichloroethane
- D.  $p, p'$  Dichlorodiphenyldichloroethene

**Answer: A**



Watch Video Solution

22. Which of the following chemicals can be added for sweetening of food item at cooking temperature and does not provide calories?

A. Sucrose

B. Glucose

C. Aspartame

D. Sucrolose

**Answer: N/A**



Watch Video Solution

23. Identify the wrong statement in the following :

A. Chlorofluorocarbons are responsible for ozone layer depletion

B. Greenhouse effect is responsible for global warming

C. Acid rain is mostly because of oxides of nitrogen and sulphur



D. Ozone layer does not permit infrared radiation from the sun to reach the earth

**Answer: 2**



**Watch Video Solution**

**24. Phenacetine is used as :**

A. antipyretic

B. antiseptic

C. analgesic

D. antimalarial

**Answer: 1**



**Watch Video Solution**

**25.** Which of the following will not enhance nutritional value of food ?

A. Minerals

B. Artificial sweeteners

C. Vitamins

D. Aminoacids

**Answer: 2**



**Watch Video Solution**

**26.** Chloramine-*T* is a:

A. disinfectant

B. antiseptic

C. analgasic

D. antipyretic

**Answer: 2**



**Watch Video Solution**

27. Which of the following is used as a "morning after pill" in many countries

A. Norethindrone

B. ethynylestradiol

C. mifepristone

D. Bithional

**Answer: 3**



**Watch Video Solution**

**28.** Which of the following is not antidepressants ?

A. Iproniazid

B. Phenelzine

C. Equanil

D. Salvarsan

**Answer: 4**



**Watch Video Solution**

**29.** A drug that is antipyretic as well as analgesic is :

A. chloroquine

B. penicillin

C. Para acetamidophenol

D. chlorpromazine hydrochloride

**Answer: 3**



**Watch Video Solution**

**30.** Which of the following statement is  
INCORRECT ?

A. Cationic detergents have germicidal  
properties

B. Bacteria can degrade the detergents containing highly branched chains

C. Some synthetic detergents can give foam even in ice cold water.

D. Synthetic detergents are not soaps

**Answer: 2**



**Watch Video Solution**



31. Which statement comparing the soap sodium stearate, and the detergent sodium lauryl sulfate is not true ?

A. both form micelles in water dispersion

B. at  $pH$  below 6.5 the soap precipitates,  
the detergent does not

C. the soap is less alkaline ( basic ) than the  
detergent

D. calcium salts of the soap are relatively  
insoluble

**Answer: 3**



**Watch Video Solution**