



BIOLOGY

BOOKS - S DINESH & CO BIOLOGY (HINGLISH)

PLATYHELMINTHES-THE FLAT WORMS

Multiple Choice Questions

1. An important character of platyelminthes is

- A. monoecious
- B. Vitelline glands
- C. Flat animals
- D. Flame cells

Answer: d



Watch Video Solution

2. Flat worms are

- A. Diploblastic
- B. Triploblastic
- C. Monoblastic
- D. None of the above

Answer: b

 Watch Video Solution

3. Coelom in flat worms is

- A. Well developed
- B. Poorly developed
- C. Schizocoel

D. Absent .

Answer: d



Watch Video Solution

4. Animals with self fertilization is

A. paragonimus

B. Dugesia

C. Taenia solium

D. None of the above

Answer: c



Watch Video Solution

5. Which of the following is a free living flat worm

A. Planaria

B. schisosoma

C. Fasciola

D. Taenia

Answer: a



Watch Video Solution

6. Vital system absent in Tapeworm is

A. Nervous system

B. Digestive system

C. Excretory system

D. Reproductive system .

Answer: b



Watch Video Solution

7. in which animal ,pharyex can be everted ?

A. Dugesia

B. Fasciola

C. Taenia

D. Ascaris

Answer: a



Watch Video Solution

8. Respiration in Dugesia is

A. Aeorbic

B. Anaerobic

C. Both

D. None of the above

Answer: a



Watch Video Solution

9. In plalyheminthes

A. Nerve cords are present

B. Nerve cords are absent

C. Nerve nets are present

D. Nerve nets are absent

Answer: a



Watch Video Solution

10. Segaments of Tapeworm are called

- A. Scolex
- B. Cystricercus
- C. Proglottides
- D. Onchospheres

Answer: c

 [Watch Video Solution](#)

11. The tissue in platyhelminthes between viscera and body wall is called

- A. Coelom
- B. Paraenchyma
- C. Mesoderm
- D. Choanderm.

Answer: b

 [Watch Video Solution](#)

12. Tapeworm respire

- A. Through suckers
- B. Through mouth
- C. Through lateral pores or Sterigmata
- D. Anaerobically

Answer: d



Watch Video Solution

13. Animals belonging to plathelminthes are also called . Flat worms because

- A. their head is flat
- B. they have dorsoventrally compressed body
- C. they creep over surface

D. the alimentary canal is flattened .

Answer: b



Watch Video Solution

14. Scolex occurs in

A. Hydra

B. Asaris

C. Taenia

D. liver Fluke

Answer: c



Watch Video Solution

15. Incomplete alimentary cannal occurs in

- A. Fasciola
- B. Ascaris
- C. Wuchereria
- D. Rhabditis

Answer: a

 [Watch Video Solution](#)

16. Which is free swimming stage in the life history of Fasciola?

- A. Miracidium
- B. Sporocyst
- C. Redia
- D. None of the above

Answer: a

 [Watch Video Solution](#)

17. Proglottides of tapeworm proliferate from

- A. Scolex
- B. Other proglottides
- C. Neck
- D. Specipal region in neck

Answer: c



Watch Video Solution

18. Parasitric adaptation of flatworms is

- A. Anaerobic respiration
- B. Secretion of antienzymes
- C. Resistant covering cuticle or integument

D. All of the above

Answer: d



Watch Video Solution

19. The disease caused by Fasciola is

A. Liver rot

B. Cysticercosis

C. Taeniasis

D. None of the above

Answer: a



Watch Video Solution

20. Taenia saginate differs from taenia solium as it lacks

- A. Rostellum
- B. Suckers
- C. Scolex
- D. None of the above

Answer: a

 [Watch Video Solution](#)

21. Apolysis is

- A. Removal of mature proglottides
- B. Removal of immature proglottides
- C. Removal of gravid segments
- D. None of the above

Answer: c

 [Watch Video Solution](#)

22. Regeneration is best shown by flat worm

- A. Fasciola
- B. Planaria / Dugesia
- C. Schistosoma
- D. Echinococcus

Answer: b



Watch Video Solution

23. Which one is blood fluke ?

- A. Schistosoma
- B. Echinococcus
- C. Fasciola

D. Taenia

Answer: a



Watch Video Solution

24. Dog tapeworm is

A. *Schistosoma haematobium*

B. *Opistorchios sinensis*

C. *Taenia nana*

D. *Echinococcus granulosus*

Answer: d



Watch Video Solution

25. The secondary host of taenia saginata is

A. Cow

B. Sheep

C. Pig

D. Both A and B

Answer: d



[Watch Video Solution](#)

26. The secondary host of tenia solium is

A. Buffalo

B. Sheep

C. Pig

D. Goat

Answer: c



[Watch Video Solution](#)

27. In schisosoma

- A. male is longer than female
- B. male is broader than female
- C. male has gynaecophoric canal for holding female
- D. Both B and C

Answer: d



[Watch Video Solution](#)

28. The number of proglottides in taenia solium is about

- A. 500
- B. 900
- C. 300

D. 200

Answer: b



Watch Video Solution

29. Four suckers present on the scolex of tapeworm are meant for

A. Attachment

B. sucking food

C. Crushing food

D. all of the above

Answer: a



Watch Video Solution

30. A cestode with only 3 segments is

A. *Taenia solium*

B. *Diphyllobothrium lattum*

C. *Echinococcus*

D. *Hymenolipis nana*.

Answer: c

 [Watch Video Solution](#)

31. *Fasciola hepatica* is a

A. Endoparasite

B. Free living

C. Ectoparasite

D. Both B and C

Answer: ab

 [Watch Video Solution](#)

32. Cysticercus stage of taenia soilum is found in

- A. Man
- B. Pig
- C. Goat
- D. Sheep

Answer: a



Watch Video Solution

33. Liver Fluke belongs to class

- A. Trematoda
- B. Turbellaria
- C. Cestoda

D. Nematoda

Answer: c



Watch Video Solution

34. The body of tapeworm consists of

- A. Scolex and neck
- B. Scolex and proglottids
- C. Scolex , neck and proglottes
- D. Neck and strobila

Answer: a



Watch Video Solution

35. Tape worm hepatica occurs in

A. Bile duct of sheep

B. Liver of sheep

C. Liver of man

D. Human bile ducts .

Answer: a

 [Watch Video Solution](#)

36. Tape worm is

A. Anoxybiotic

B. Oxybiotic

C. Aerobic

D. None of the above

Answer: a

 [Watch Video Solution](#)

37. Each segment of taenia is

- A. monoecius
- B. Dioecius
- C. Asexual
- D. None of the above

Answer: d



Watch Video Solution

38. Hydatid worm is

- A. Achhissoma indicum
- B. Ancylostoma duodenale
- C. Ecteroebius vermicularis

D. Echinococcus granulosus

Answer: db



Watch Video Solution

39. The infertive stage of Fasciola hepatica is

A. Sporocyst

B. Redia

C. Cercaria

D. Metacercaria

Answer: a



Watch Video Solution

40. Which one of the flatworms has eyes ?

A. Fasciola

B. Dugesia

C. Schistosoma

D. Echinococcus

Answer: a



Watch Video Solution

41. Hexacanth is activated by

A. Bile salts

B. Pancreatic juice

C. Intestinal juice

D. None

Answer: a



Watch Video Solution

42. Hexacanth reaches

- A. Voluntary muscles
- B. Involuntary muscles
- C. Cardiac muscles
- D. none of the above

Answer: ad



Watch Video Solution

43. the disease caused by taenia is

- A. Taeniasis
- B. liver rot
- C. Ascariasis

D. None

Answer: a



[Watch Video Solution](#)

44. Fasciola attaches its self to walls of the bile ducts by means of

- A. Anterior sucker
- B. Adhesive zone
- C. Posterior sucker /acetabulum
- D. Spiny cuticle and posterior sucker

Answer: a



[Watch Video Solution](#)

45. Human infection of taenia solium through food contaminated with

A. Cystecerci

B. Onchospheres

C. Hexacanth

D. Adult worm

Answer: d

 [Watch Video Solution](#)

46. Pig gets infestation of tenia solium contains

A. Onchospheres

B. cysticerci

C. Hexacanth

D. Adult worm

Answer: b

 [Watch Video Solution](#)

47. Scolex of tenia soilum cotsins

- A. Rostellum
- B. Hooks
- C. Suckers
- D. All of the above

Answer: a



[Watch Video Solution](#)

48. Taenia solium attaches it self to the intestinal wall by means of sclex through its

- A. Suckers
- B. Suckers and hooks
- C. Hooks

D. Adhesive glands

Answer: d



Watch Video Solution

49. Fluke occurring in human beings is

A. Fasciolopsis

B. Fasciola

C. Dugesia

D. Echinococcus .

Answer: b



Watch Video Solution

50. in case o human beings hydatid cysts occur over

A. Stomach

B. liver

C. Lungs

D. Both B and C

Answer: c



[Watch Video Solution](#)

51. Primary host of echinococcus granulosus is

A. Sheep or Goat

B. Dog

C. Human beings

D. pig

Answer: b



[Watch Video Solution](#)

52. In Human being ,hydatid worm is

- A. Secondary parasite
- B. Periodic parasite
- C. Incidental parasite
- D. Ectoparasite

Answer: ca



Watch Video Solution

53. Number of proglottides present in Echinococcus granulosus is

- A. 4 – 5
- B. 10 – 15
- C. 25 – 30

D. 250 – 300

Answer: b



Watch Video Solution

54. Beef tapeworm is

A. *Taenia solium*

B. *Taenia saginata*

C. *Hymenolepis nana*

D. *Dipylidium caninum*

Answer: b



Watch Video Solution

55. Beef tapeworm attaches itself to the wall of intestine by means of

A. Hooks

B. Hookless rostellum

C. Suckers

D. Minute spines

Answer: c



Watch Video Solution

56. Onchosphere infection of taenia solium may occur in human being it

Causes

A. Cysticercosis

B. Taeniasis

C. Bilharziasis

D. Enteribiasis

Answer: a

 [Watch Video Solution](#)

57. Pigs pick up tapeworm infection because they are

- A. Coprozonic
- B. Coprophagic
- C. Capsules
- D. Both B and C

Answer: bd

 [Watch Video Solution](#)

58. Echinocystid embryo present over the scolex of tapeworm is called

- A. cysticaria
- B. Bladderworm
- C. Cysticercus

D. Both B and C

Answer: c



Watch Video Solution

59. the larva or embryo present in onchosphere of Tapeworm is called

A. Cysticercus

B. Radia

C. Hexacanth

D. Matacercaria

Answer: d



View Text Solution

60. inside pig , hexacanth larva gives rise to

- A. Cercaria
- B. Bladderworm
- C. Cysticercus
- D. Both B and C

Answer: a

 [Watch Video Solution](#)

61. Protrusible structure present over the scolex of tapeworm is

- A. Rostellum
- B. Sucker
- C. Proglottids
- D. Auricle

Answer: c

 [View Text Solution](#)

62. Stucible strcture present over the scolex of tapeworm is

A. Rosellum

B. Sucker

C. Proglottis

D. Aurricle

Answer: c



[View Text Solution](#)

63. Number and arrangement present over rostellum of tapeworm are

A. 12 – 22 in one whorl

B. 22 – 32 in two whorls

C. 22 – 32 in one whorl

D. 12 – 22 in two whorls

Answer: b



[View Text Solution](#)

64. number of gravid proglottides expelled out at one time is

A. 4 – 5

B. 5 – 10

C. 10 – 20

D. 20 – 40

Answer: a



[Watch Video Solution](#)

65. Infection in which capsules pass out of the body through faeces and urine is

- A. Cysticercosis
- B. Schistosomiasis
- C. Taeniasis
- D. Both B and C

Answer: b



[View Text Solution](#)

66. Schistosoma lives in human body in

- A. Lymph nodes
- B. urinary tract blood vessels
- C. Mesenteric and hepatic portal veins
- D. All of the above

Answer: d



Watch Video Solution

67. the alternate host of schistosome is

A. Snail

B. pig

C. Sheep and goat

D. fish

Answer: a



Watch Video Solution

68. the stage absent in life cycle of schistoma is

A. Miracidium

B. Redia

C. Capsule

D. Cercarria

Answer: b



Watch Video Solution

69. Human infaction of blood Fluke occurs thorough

A. Metacercarria

B. Miracidium

C. capsule

D. Cercaria

Answer: d



Watch Video Solution

70. cercaria of blood Fluke pass into human body through

- A. Ingestion of food
- B. Drinking of contaminated water
- C. Direct penetration through skin
- D. Both B and C.

Answer: d



Watch Video Solution

71. what is true about male blood Fluke ?

- A. Shorter and slender
- B. Longer and slender
- C. Longer and broader
- D. Shorter and broader

Answer: d



[Watch Video Solution](#)

72. In schistosoma , gynecophoral cenal occurs in

- A. male for holding female
- B. male for holding eggs
- C. female for holding male .
- D. Female for holding male

Answer: a



[Watch Video Solution](#)

73. Bilharziasis is infection of

- A. Echinococcus

B. Schistosoma

C. Opisthorchis

D. Fasciola

Answer: b



[Watch Video Solution](#)

74. intestinal Fluke is

A. Fasciola indica

B. Fasciolopsis buski

C. Opisthorchis sinensis

D. Schistosoma japonicum.

Answer: b



[Watch Video Solution](#)

75. chinese or oriental Liver Fluke is

- A. *Opisthorchis sinensis*
- B. *Schistosoma japonicum*
- C. *Fasciola gigantica*
- D. both B and C.

Answer: a



Watch Video Solution

76. liver Fluke of Cattle is

- A. *Fasciola hepatica*
- B. *Fasciola gigantica*
- C. *Schistosoma indicum*
- D. *Schistosoma mansoni*

Answer: b



[Watch Video Solution](#)

77. Lung Fluke is

- A. *Paragonium westermani*
- B. *Schistosoma mansoni*
- C. *Fasciola indica*
- D. *Faciola buski*

Answer: a



[Watch Video Solution](#)

78. Fasciolasis is

- A. Liver rot of sheep

B. Cirrhosis of humans

C. Liver rot of cattle

D. Cirrhosis of pig

Answer: a



Watch Video Solution

79. Fasciola hepatica is

A. Ectoparasite

B. Monogenetic endoparasite

C. Digenetic endoparasite

D. Incidental parasite

Answer: c



Watch Video Solution

80. primary host of taenia solium is

- A. Humans
- B. Pig
- C. Sheep
- D. Snail

Answer: a



[Watch Video Solution](#)

81. primary host of taenia solium is

- A. Snail
- B. pig
- C. Cattle
- D. sheep

Answer: d



Watch Video Solution

82. liver Fluke resides inside

- A. Liver
- B. Bile ducts
- C. Both A and B
- D. Liver and duodenum.

Answer: c



Watch Video Solution

83. Liver Fluke has

- A. Absorptive nutrition

B. saprozoic nutrition

C. Holozic nutrition

D. All the above

Answer: c



Watch Video Solution

84. Liver Fluke living in bile ducts feeds on

A. Bile

B. Blood and lymph

C. Epithelial cells

D. All the above

Answer: d



Watch Video Solution

85. Schistosoma is

- A. hermaphrodite but protandrous
- B. Hermaphrodite but protogynous
- C. Unisexual
- D. Hermaphrodite with self fertilization

Answer: c



Watch Video Solution

86. Fasciola hepatica is

- A. Hermaphrodite with self fertilization
- B. Hermaphrodite with preferably cross fertilization
- C. unisexual
- D. sexually sterile

Answer: b



Watch Video Solution

87. In fasciola hepatica , germination of capsule produces

A. Miracidium

B. Sporocyst

C. Redia

D. Cercaria

Answer: a



Watch Video Solution

88. Miracidium of Liver Fluke is

A. Herbivorous

B. Carnivorous

C. Omnivoous

D. Non feeding

Answer: d



Watch Video Solution

89. Miracidium of Liver Fluke is

A. Free swiming

B. Creeping

C. Non motile

D. Free floating

Answer: a



Watch Video Solution

90. Miracidium gives rise to

- A. sporocyst after entering snail
- B. sporocyst in contact with aquatic vegetation
- C. Redia after entering snail
- D. Redia in contact with aquatic vegetation .

Answer: a



[Watch Video Solution](#)

91. Sheep pick up infection of liver fluke from

- A. Redia
- B. Cercaria
- C. Metacercaria
- D. Capsule

Answer: c



Watch Video Solution

92. Metacercaria of Liver Fluke is

- A. Free swimming stage
- B. Encysted stage
- C. Nonencysted non motile stage
- D. Free floating stage

Answer: b



Watch Video Solution

93. Regeneration is absent in flatworms

- A. Planaria

B. Fasciola

C. Schistosoma

D. Both B and C

Answer: d



Watch Video Solution

94. Pseudoemetamerism occurs in

A. Turbellaria

B. Trematoda

C. Cestoda

D. None of the above

Answer: c



Watch Video Solution

95. mouth of dugesia is

- A. Anterior
- B. Antero - dorsal
- C. Mid- ventral
- D. Antero -ventral

Answer: c



Watch Video Solution

96. Fertilization in internal in

- A. Dugesia
- B. Fasciola
- C. Schistosoma
- D. All the above

Answer: d



Watch Video Solution

97. Dugesia shows

- A. Transverse binary fission
- B. longitudinal binary fission
- C. Oblique binary fission
- D. no binary fission

Answer: a



Watch Video Solution

98. Anterior zone of Dugesia is

- A. Anterior

B. Posterior

C. Dorsal

D. Ventral

Answer: d



Watch Video Solution

99. Flame cells / solenocytes are main excretory structures of

A. Coelenterates

B. Platyhelminthes

C. Annelida

D. Echinodermata

Answer: b



Watch Video Solution

100. Regeneration power can best be studied in

- A. Planaria /Dugesia
- B. Amphioxus
- C. Earthworm
- D. Sponge .

Answer: a



Watch Video Solution

101. the exeretory strutures of flatworwa / taenia are

- A. Flame cells
- B. Nephridia
- C. malpighian tubules
- D. Green glands

Answer: a



Watch Video Solution

102. *Taenia saginata* differs from *Taenia solium* in

- A. Absence of scolex hoods
- B. Absence of scolex hooks and uterine branching
- C. Absence of scolex hooks and presence of both male and female reproductive organs
- D. Presence of scolex hooks

Answer: b



Watch Video Solution

103. *Schistosoma* is a parasite found in

A. Blood

B. Liver

C. Lungs

D. interstine

Answer: a



Watch Video Solution

104. Onchosphere occurs in

A. Ascaris

B. Fasciola

C. Taenia

D. Planaria

Answer: c



Watch Video Solution

105. Bladderworm /cysticercus is the larval stage of

- A. Tapeworm
- B. Roundworm
- C. pinworm
- D. liver Fluke

Answer: a



Watch Video Solution

106. Larva of schistosome is

- A. Cercaria
- B. Planula
- C. cysticercus

D. Muller's larve

Answer: a



[Watch Video Solution](#)

107. what is corrct about taenia ?

- A. male organs occur in posterior proglottids
- B. male organs occur in anterior proglottides
- C. Female organs occur in anterior proglottides
- D. mature proglottides contain both male and female organs

Answer: d



[Watch Video Solution](#)

108. flame cells are associared with

A. Respiration

B. Excretion

C. Nutrition

D. Digestion

Answer: b



[Watch Video Solution](#)

109. What is true about *Taenia saginata*

A. Life history has pig as intermediate host

B. there are two large suckers on scolex

C. Rostellar hooks are absent

D. Rostellum has double circle of hooks

Answer: c



[Watch Video Solution](#)

110. Tapeworm does not possess digestive system as it

- A. does not require solid food
- B. Obtains food through general surface
- C. does not require food
- D. Lives in interstine

Answer: b



[Watch Video Solution](#)

111. which one is not larval stage of flatworms ?

- A. Redia
- B. Cercaria
- C. Bipinaria

D. Miracidium

Answer: c



Watch Video Solution

112. Which constitutes the correct pairing

A. Flatworms - planaria

B. Dogfish - Sea Urchin

C. Fish - Snail

D. None of the above

Answer: a



Watch Video Solution

113. Anus is absent in

A. Fasciola

B. pheretima

C. periplaneta

D. unio

Answer: b



Watch Video Solution

114. Pick up the correctly matched

A. water vascular syaytem - sponage

B. Blubber - kargaaro

C. Marsupium - platyroo

D. flame cell -flatworm

Answer: d



Watch Video Solution

115. Which one of the following is an example of platyhelminthes

- A. Schistosoma
- B. Trypanosoma
- C. Plasmodium
- D. Wuchereria

Answer: a



[Watch Video Solution](#)

116. Cysticerci in pig muscles can remain viable upto

- A. one year
- B. six months
- C. six years

D. one month.

Answer: b



Watch Video Solution

117. Taenia solium is characterised by

- A. Absence of digestive tract
- B. presence of hooks for adhesion
- C. Externally divided body
- D. all the above

Answer: d



Watch Video Solution

118. Both alternation of generation and alternation of hosts are present in

- A. Wuchereria
- B. Fasciola
- C. Taenia
- D. Ascaris

Answer: b



Watch Video Solution

119. Give the correct match in the following

Column I	Column II
A. Flame cells	p. Sponges
B. Collar Cells	q. Hydra
C. Stinging Cells	r. Planaria
- -	s. Ascaris

A. $a = r, b = p, c = q$

B. $a = r, b = p, c = s$

C. $a = r, b = s, c = p$

D. $a = r, b = q, c = s$

Answer: a



Watch Video Solution

120. Laurer's canal is found in

A. Amoeba

B. Paramecium

C. Fasciola

D. Hydra.

Answer: c



Watch Video Solution

121. Which is true of taenia ?

- A. Anterior proglottides contain male organs while ripe proglottids have uterus filled with eggs
- B. all proglottides have both male and female organs
- C. female organs are confined to anterior proglottides .
- D. Male organs are confined to posterior proglottides.

Answer: a



Watch Video Solution

122. Alimentary canal is absent in

- A. Taenia and schistosoma
- B. Ascaris and fasciola
- C. Taenia and Echinococcus

D. tricuris and Fasciola

Answer: c



Watch Video Solution

123. Rhabdites occur in

A. Planaria /Dugesia

B. fasciola

C. Taenia

D. Echinococcus

Answer: a



Watch Video Solution

124. In life history of liver fluke are present (1) Cercaria (2) Metacercaria (3) Sporocyst (4) Redia (5) Miracidium. What is their proper sequence

A. 21354

B. 53412

C. 54213

D. 54312

Answer: b



Watch Video Solution

125. Fasciola hepatica lives in

A. liver of sheep

B. Blood of sheep

C. Interstine of sheep

D. Spleen of sheep

Answer: a



Watch Video Solution

126. Dropping of gravid proglottids by cestodes is called

- A. Autophagy
- B. Autotomy
- C. Paedogenesis
- D. Apolysis

Answer: d



Watch Video Solution

127. Turbellarians are

- A. free living nematodes

B. parastic nematodes

C. free living flatworms

D. parastic trematodes

Answer: c



Watch Video Solution

128. Cercaria stage of *Fasciola hepatica* leads to

A. sporocyst

B. Redia

C. miracidium

D. metacercaria

Answer: d



Watch Video Solution

129. Free swimming ciliated stage of liver fluke is

- A. Redia
- B. Miracidium
- C. Metacercaria
- D. Cercaria

Answer: b



Watch Video Solution

130. Acoelomate animal with protostome nature is

- A. Ascaris
- B. Schistosoma
- C. Taenia
- D. Megasclex

Answer: c



Watch Video Solution

131. A metazoan covered by cilia is

A. paramecium

B. Dugesia

C. fasciola

D. Ascaris

Answer: b



Watch Video Solution

132. For completing its life cycle , Tape worm requires /Intermediate host of Tapeworm is

A. Snail

B. pig

C. Dog

D. Man only

Answer: b



[Watch Video Solution](#)

133. Cysticercus of Taenia develop in

A. Man

B. Goat

C. Sheep

D. pig

Answer: d



[Watch Video Solution](#)

134. Hymenolepis nana is

- A. dog tapeworm
- B. Dwarf tapeworm
- C. Pork tapeworm
- D. Dead man's finger

Answer: b



Watch Video Solution

135. Lung Fluke is

- A. hymenolepic nana
- B. Paragnimus westermani
- C. Schistodoma haematobium

D. Echinococcus graanulosus

Answer: b



[Watch Video Solution](#)

136. which of the following takes foods but has no alimentary canal ?

A. Leech

B. Liver Fluke

C. Ascaris

D. Taenia

Answer: d



[Watch Video Solution](#)

137. Mehli's glands of Tapeworm are associated with

A. Reproduction

B. Excretion

C. Respiration

D. Circulation

Answer: a



Watch Video Solution

138. During its life cycle fasciola hepatica (Liver fluke) infects its intermediate host and primary host at the following larval stages respectively

A. Radia and miracidium

B. Cercaria and redia

C. Metacercaria and cercaria

D. Miracidium and metacercaria

Answer: d



[Watch Video Solution](#)

139. Which one is excretory organ ?

A. Archaeocyte

B. Choanocyte

C. Pinacocyte

D. Solenocyte

Answer: d



[Watch Video Solution](#)

140. An acoelomate animal with bilateral symmetry is

A. jelly fish

B. Liver Fluke

C. Crab

D. Roundworm.

Answer: b



Watch Video Solution

141. *Taenia solium* belongs to phylum

A. Aschelminthes

B. Mollusca

C. Platyhelminthes

D. Annelida

Answer: c



Watch Video Solution

142. *Taenia solium* is attached to intestinal mucosa by

- A. Rostellum
- B. Scolex
- C. Proglottides
- D. Acetabulum.

Answer: a



[Watch Video Solution](#)

143. Triploblastic undegmented acoelomate exhibiting bilateral symmetry and reproducing both asexually and sexually with parasitic forms The above description is characteristic of phylum

- A. porifera
- B. platyhelminthes
- C. cnidaria

D. ctenophore

Answer: b



[Watch Video Solution](#)

144. flame cells are excretory organs of

A. Hydra

B. Hydrilla

C. Cockroach

D. planaria

Answer: d



[Watch Video Solution](#)

145. Cestodes are distinguished from other flatworms by the absence of

- A. Nervous system
- B. Digestive system
- C. Excretory system
- D. Reproductive system .

Answer: b

 [Watch Video Solution](#)

146. gut paraasite belongs to

- A. Gestoda
- B. Cestoda
- C. Turbellaria
- D. Both A and B

Answer: b

 [Watch Video Solution](#)

147. Which is not a characteristic of Taenia ?

- A. Apolysis
- B. Proglottides
- C. Metamerism
- D. Strobila

Answer: c



Watch Video Solution

148. Which one can show self fertilization ?

- A. Earthworm
- B. Liver fluke
- C. Fish

D. Roundworm.

Answer: b



Watch Video Solution

149. Excretory organs of flatworms are

A. Malpighian tubules

B. Nephridia

C. Protonephridia

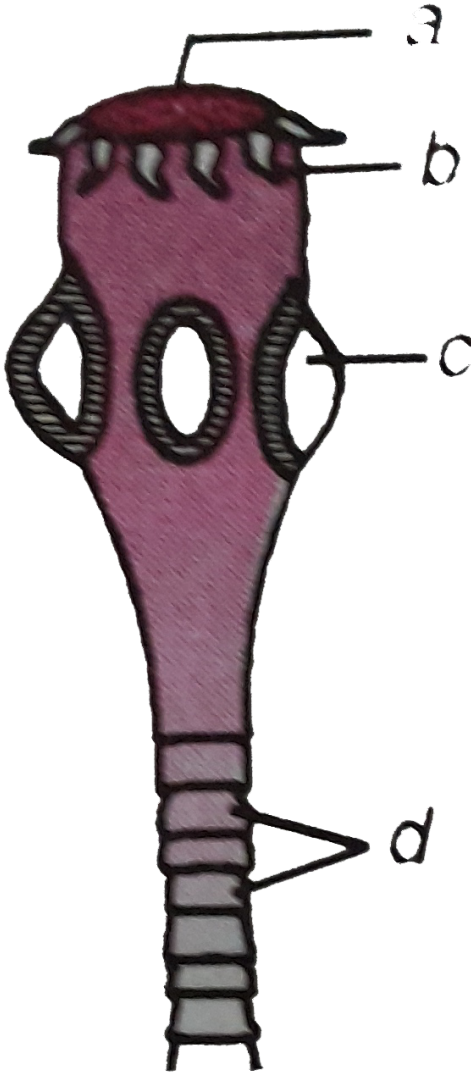
D. Nephron.

Answer: c



Watch Video Solution

150. in the diagram given by the side different parts are indicated by alphabets . Chosse the answer in which these alphbetas correctly match the parts they indicate



A. a - suctorial mouth , b - hooks ,c- sucker ,d- segments

B. a- sucker , b- hairs , c- ring ,d- proglottids

C. a - rostellum , b- hooks , c- sucker , d- proglottids

D. a - mouth b- tentacles , c- sucker , d- segments .

Answer: c

 [Watch Video Solution](#)

151. the animals having parenchyma in space between body wall and gut is

A. Echinococcus

B. Echinus

C. Enterobius

D. Eunice

Answer: a

 [Watch Video Solution](#)

152. intermediate host of schistosome is

- A. Sheep
- B. Snail
- C. Mosquito
- D. pig

Answer: b



Watch Video Solution

153. Which of the following does not have many segments ?

- A. Lobster
- B. Grasshopper
- C. Earthworm

D. Flatworm

Answer: d



Watch Video Solution

154. flatworm differ from roundworms in possessing

- A. Solid mesoderm
- B. Bilateral symmetry
- C. Metamorphosis
- D. Triploblastic body

Answer: a



Watch Video Solution

155. Tapeworms belong to which of the following groups

A. Annelida

B. nematoda

C. Cestoda

D. Trematoda

Answer: c



[Watch Video Solution](#)

156. Which one of the following kinds of animals are triploblastic

A. Sponges

B. Ctenophores

C. Corals

D. Flatworms

Answer: d



[Watch Video Solution](#)

157. Member of phylum plathelminthes are called

- A. Flat worms
- B. Round worms
- C. Segmented worms
- D. Walking worms

Answer: a



[Watch Video Solution](#)

158. Hexacanth of Taenia reaches heart of pig through vein

- A. Post caval vein
- B. Renal vein
- C. Hepatic vein

D. Precaval vein

Answer: a



[Watch Video Solution](#)

159. Which parasite is responsible for causing gigantism in its intermediate host

A. Plasmodium vivax

B. Ascaris lumbricoides

C. Schistosoma

D. Fasciola hepatica

Answer: d



[Watch Video Solution](#)

160. Match the lists with reference to Taenia

I

- (a) mehlis glands
- (b) vitelline glands
- (c) Mesenchymal cells
- (d) Flame cells

II

- (i) tegument formation
- (ii) Osmoregulation and excretion
- (iii) Lubricate passage of capsules into uterus
- (iv) secretion of embryophore
- (v) Capsule formation around zygote

- A.

<i>a</i>	<i>b</i>	<i>c</i>	<i>d</i>
(iii)	(v)	(i)	(ii)
- B.

<i>a</i>	<i>b</i>	<i>c</i>	<i>d</i>
(iii)	(v)	(ii)	(iv)
- C.

<i>a</i>	<i>b</i>	<i>c</i>	<i>d</i>
(v)	(iii)	(i)	(ii)
- D.

<i>a</i>	<i>b</i>	<i>c</i>	<i>d</i>
(iv)	(iii)	(i)	(ii)

Answer: a



Watch Video Solution

161. Liver rot of sheep is caused by

- A. Fasciola hepatica

B. Planaria

C. Turbellaria

D. Bioalium

Answer: b



Watch Video Solution

162. The cercarial stage of liverfluke is produced by

A. Sexual reproduction

B. Asexual multiplication

C. Binary fission

D. Parthinogenesis

Answer: c



Watch Video Solution

163. which one of the following is an actively swimming free - living and nonfeeding stage of liverfluke

- A. Sporocyst
- B. Redia
- C. Cercaria
- D. Metacercaria

Answer: c



[Watch Video Solution](#)

164. Choose the correct combinations

- (a) Tubellaria-mostly free living flat worms with - convoluta mucus forming rhabdites in body wall
- (b) Trematoda - Commonly called flukes and bear - Bilharzia two suckers
- (c) Cestoda -Ecto - and endoparasite , body segmented -Echinococcus
- (d) Phasmodia - Amphids -forming chemoreceptor function -Trichuris

A. (b) and (c)

B. (a) and (b)

C. (a),(c) and (d)

D. (a) ,(b) and (d).

Answer: b



Watch Video Solution

165. Flame cells of flatworms help in

(i) Osmoregulation (ii) Digestion

(iii) Reproduction (iv) Excretion

(v) Bioluminescence ,

A. (ii) only is correct

B. (i) and (iv) are correct

C. (iii) only is correct

D. (i) and (v) only are correct

Answer: b



Watch Video Solution

166. Gut is found in all but one of the following taxonomic group of platyhelminthes

- A. Digenea
- B. Cestoda
- C. Polyclidia
- D. Monogenea

Answer: b



Watch Video Solution

167. A proglottid of Taenia is called gravid only if it has

A. Both male and female reproductive organs well developed

B. Only female organs well developed

C. Well developed uterus filled with eggs

D. Become dead .

Answer: c



Watch Video Solution

168. The passage of eggs in uterus is lubricated by the secretion fromn mehlis ' glands in

A. Liver fluke

B. Ascaris

C. Platypus

D. kangaroo

Answer: a

 [Watch Video Solution](#)

169. Which one of the following life cycle stage of liver Fluke is infective to the intermediate host

- A. Metacercaria
- B. Miracidia
- C. Sporocyst
- D. Cercaria

Answer: b

 [Watch Video Solution](#)

170. Echinococcus is an exemple of

- A. Nemathelminthes
- B. Platyheminthes

C. Bacteria

D. Protista

Answer: b



[Watch Video Solution](#)

Check Your Grasp

1. Binary fission occurs in metazoa in

A. Cestoda

B. Turbellaria

C. Trematoda

D. Nematoda

Answer:



[Watch Video Solution](#)

2. A parasitic flatworm which passes out capsules through urine is

- A. *Opisthorchis sinensis*
- B. *Fasciola gigantica*
- C. *Echinococcus granulosus*
- D. *Schistosoma haematobium*

Answer:

 [Watch Video Solution](#)

3. Germinal lineage hypothesis has been advocated for the larvae of

- A. *Fasciola hepatica*
- B. *Taenia solium*
- C. *Ascaris lumbricoides*
- D. *Necator lumbricoides*

Answer:



[Watch Video Solution](#)

4. which larval stage can be repeated in the life cycle of Fasciola hepatica

A. Miracidium

B. Sporocyst

C. Radia

D. Cercaria

Answer:



[Watch Video Solution](#)

5. In Dugesia the development of young ones is

A. Direct

B. Indirect by three types of larvae

C. indirect by two types of larvae

D. indirect through a larval stage.

Answer:



[Watch Video Solution](#)

6. Schisosomaisis is common in

A. Farmers

B. potters

C. Washermen

D. All the above

Answer:



[Watch Video Solution](#)

7. Tapeworm shows

- A. internal fertilization
- B. self fertilization
- C. Cross fertilization
- D. all the above

Answer:



Watch Video Solution

8. Body is unsegmented and leaf like in

- A. Turbellaria
- B. Trematoda
- C. Both A and B
- D. Cestoda

Answer:



[Watch Video Solution](#)

9. Parity ciliated epidermis occurs in

A. Trematoda

B. Turbellaria

C. Cestoda

D. All the above

Answer:



[Watch Video Solution](#)