



BIOLOGY

BOOKS - S DINESH & CO BIOLOGY (HINGLISH)

STRUCTURAL ORGANISATION IN ANIMALS

Multiple Choice Questions

1. Tissue means

- A. Similar cells having common origin
- B. Similar cells having common origin and functions
- C. Cells having same metabolic activities
- D. Similar cells with same metabolic activity.

Answer: B



Watch Video Solution

2. Simple tissue is defined as

- A. Group of similar cells which are common in origin.
- B. Different types of cells performing same functions
- C. Different types of cells performing same functions
- D. Organised group of cells performing many functions.

Answer: A



Watch Video Solution

3. Compound tissue is defined as

- A. Similar types of cells held together by connective tissue
- B. Different types of cells which are different in structure and function
- C. Different types of cells performing one function

D. Similar cells at different regions performing many functions.

Answer: C



[Watch Video Solution](#)

4. Epithelial cells get nutrient material from

A. Neighbouring cells

B. Blood vessels

C. Lymph vessels

D. Underlying tissue .

Answer: D



[Watch Video Solution](#)

5. Microvilli of epithelial cells

- A. Increase surface area
- B. Protect the cells
- C. Engulf the foreign matter
- D. Give movements to the cells .

Answer: A

 [Watch Video Solution](#)

6. Maximum intercellular substance is found in

- A. Connective tissue
- B. Nervous tissue
- C. Epithelial tissue
- D. Muscular tissue

Answer: A

 [Watch Video Solution](#)

7. Squamous epithelium is also called

- A. Germinal epithelium
- B. Columnar epithelium
- C. Pavement epithelium
- D. Sensory epithelium .

Answer: C



Watch Video Solution

8. Epidermis of skin of vertebrates comprises

- A. Simple epithelium
- B. Stratified epithelium
- C. Transitional epithelium

D. Columnar epithelium.

Answer: B



[Watch Video Solution](#)

9. Ciliated epithelial cells are present in

- A. Buccal cavity of Frog
- B. Stomach of Frog
- C. Pancreatic duct of Pancreas
- D. None of these.

Answer: A



[Watch Video Solution](#)

10. Human mammary glands belong to one of the following types of glands

- A. Simple alveolar
- B. Coiled tubular
- C. Compound tubulo- alveolar
- D. Simple tubular .

Answer: C



[Watch Video Solution](#)

11. Tesselated epithelium is found in

- A. Lining of intestine
- B. Lining of blood vessel
- C. Seminiferous tubule
- D. Uriniferous tubules.

Answer: B



Watch Video Solution

12. Germinal epithelial cells are present in

- A. Seminiferous tubules
- B. Uriniferous tubules
- C. Lining of stomach
- D. Inner lining of trachea.

Answer: A



Watch Video Solution

13. Transitional epithelium is found in

- A. Larynx

B. Vein

C. Kidney

D. Ureter and renal pelvis .

Answer: D



Watch Video Solution

14. Outer layer of skin that frog casts off is composed of

A. Simple squamous epithelium

B. Tesselated epithelium

C. Ciliated epithelium

D. Cuboidal epithelium .

Answer: A



Watch Video Solution

15. Areolar tissue connects

- A. The skin with muscles
- B. Muscles to muscles
- C. Bone to bone
- D. Bone to muscles .

Answer: A



Watch Video Solution

16. Matrix of the connective tissue is secreted by

- A. Fibrocytes
- B. Histiocytes
- C. Mast cells
- D. Plasma cells.

Answer: A



Watch Video Solution

17. Dermis of the skin is formed of

- A. Adipose connective tissue
- B. Epithelial tissue
- C. Muscular tissue.
- D. Areolar connective tissue.

Answer: A



Watch Video Solution

18. Tendon is made up of

- A. Yellow fibrous connective tissue

B. Adipose tissue

C. Modified white fibrous tissue

D. Areolar tissue.

Answer: A::C



Watch Video Solution

19. Yellow fibres are made up of

A. Ossein

B. Elastin

C. Chondrin

D. Collagen.

Answer: B



Watch Video Solution

20. When the glandular cells breakdown completely , the gland is known as

- A. Holocrine gland
- B. Apocrine gland
- C. Merocrine gland
- D. None of the above.

Answer: A



[Watch Video Solution](#)

21. Perichondrium covers the

- A. Bone
- B. Cartilage
- C. Decalcified bone
- D. Dried bone .

Answer: B



Watch Video Solution

22. Hyaline cartilage is present at

- A. The ends of digits
- B. Tip of the nose
- C. Epiglottis of mammals
- D. Articular ends of long bones .

Answer: D



Watch Video Solution

23. Calcified cartilage is present in

- A. Pinna

B. Supra scapula of pectoral girdle of frog

C. Ends of bones

D. Intervertebral discs.

Answer: B



Watch Video Solution

24. The process of bone formation is called

A. Ossification

B. Calcification

C. Calcination

D. None of these.

Answer: A



Watch Video Solution

25. Matrix of cartilage is secreted by

- A. Chondrocytes
- B. Chondroblasts
- C. Osteocytes
- D. Histiocytes.

Answer: B



Watch Video Solution

26. The main difference between bone and cartilage is of

- A. Mineral salts
- B. Blood vessels
- C. Lymph vessels
- D. Haversian canals.

Answer: B



Watch Video Solution

27. 60% inorganic components are present in

- A. Cartilage
- B. Bone
- C. Connective tissue
- D. None of these.

Answer: B



Watch Video Solution

28. RBC that lack nuclei when they are mature are of

- A. Frog

B. Lizard

C. Man

D. Birds.

Answer: C



[Watch Video Solution](#)

29. Blood clot is mainly due to

A. Plasma and RBC

B. Plasma and thrombocytes

C. Heparin and corpuscles

D. Fibrin and corpuscles.

Answer: D



[Watch Video Solution](#)

30. Which of the following is not phagocytic ?

- A. Neutrophils
- B. Monocytes
- C. Lymphocytes
- D. Eosinophils .

Answer: C



[Watch Video Solution](#)

31. Blood platelets are present in the blood of

- A. Fishes
- B. Amphibians
- C. Reptiles
- D. Mammals

Answer: D



Watch Video Solution

32. Agranulocytes normally develop in

- A. Bone marrow
- B. Liver
- C. Lymph glands and spleen
- D. None of these.

Answer: C



Watch Video Solution

33. Granulocytes are produced in

- A. Liver

B. Bone marrow

C. Spleen

D. None of these.

Answer: B



Watch Video Solution

34. Formulation of platelets is known as

A. Haemopoiesis

B. Thrombopoiesis

C. Haemolysis

D. None of these.

Answer: B



Watch Video Solution

35. Percentage of protein is more in

- A. Lymph
- B. Blood
- C. Plasma
- D. W.B.C.

Answer: B



[Watch Video Solution](#)

36. Which of the acts as middle man ?

- A. W.B.C.
- B. Plasma
- C. Blood
- D. Lymph.

Answer: D



[Watch Video Solution](#)

37. In man , the number of R.B.C. per cubic mm of blood is

A. 1 to 3 millions

B. 5 to 5.4 millions

C. Less than one milliion but more than 50 thousand

D. Less than 50 thousand.

Answer: B



[Watch Video Solution](#)

38. Life span of a W.B.C. in man is

A. 100 days

B. 50 days

C. 7 days

D. None of the above.

Answer: C



Watch Video Solution

39. Blood platelets are

A. Nucleated

B. Nucleus is many lobed

C. Nucleus is very small

D. Denucleated .

Answer: D



Watch Video Solution

40. The diameter of RBC is

A. $10.3\mu m$

B. $9.2\mu m$

C. $7.2\mu m$

D. $8.1\mu m$.

Answer: C



Watch Video Solution

41. Formulation of antibodies is the function of

A. Monocytes

B. Neutrophils

C. Basophils

D. Lymphocytes.

Answer: D



Watch Video Solution

42. Life span of mammalian of R.B.C. is

- A. 120 - 128 days
- B. 100 days
- C. Less than 100 days
- D. None of the above.

Answer: A



Watch Video Solution

43. The main difference in the blood and lymph is

- A. Absence of RBC

B. Absence of WBC

C. Number of WBC is less in blood

D. None of these.

Answer: A



[Watch Video Solution](#)

44. Which blood corpuscle is largest in diameter ?

A. Erythrocyte

B. Monocyte

C. Neutrophil

D. Lymphocyte.

Answer: B



[Watch Video Solution](#)

45. Which of the W.B.C. has many lobed nucleus ?

- A. Monocytes
- B. Lymphocytes
- C. Neutrophils
- D. Basophils.

Answer: C



[Watch Video Solution](#)

46. Matrix of bone is arranged

- A. In concentric layers
- B. Not is concentric layers
- C. Matrix forms the ground substance
- D. None of these.

Answer: A



Watch Video Solution

47. Which of the following lack blood supply ?

- A. Bone
- B. Connective tissue
- C. Cartilage
- D. None of these.

Answer: C



Watch Video Solution

48. Volkmann's canal connects

- A. Osteocyte with matrix

B. Different bones

C. Haversian canal with matrix

D. Haversian canal with other Haversian canals.

Answer: D



[Watch Video Solution](#)

49. Ossification of connective tissue results in

A. Cartilage

B. Sesamoid bone

C. Membrane bone

D. None of the above.

Answer: C



[Watch Video Solution](#)

50. Bone has longitudinal canals , called

- A. Central canals
- B. Haversian canals
- C. Volkmann's canals
- D. None of the above.

Answer: B



[Watch Video Solution](#)

51. Hyoid apparatus contains

- A. Hyaline cartilage
- B. Fibrous cartilage
- C. Calcified cartilage
- D. Elastic cartilage .

Answer: A



Watch Video Solution

52. Intervertebral discs are composed of

- A. Hyaline cartilage
- B. Elastic cartilage
- C. Fibrous cartilage
- D. None of the above.

Answer: C



Watch Video Solution

53. Calcified cartilage is found in humans in

- A. Head of femur

- B. Pectoral girdle
- C. Ribs and sternum
- D. Both A and B .

Answer: A

 [Watch Video Solution](#)

54. Ossification is the process by which

- A. Cartilage is formed
- B. Bone is formed
- C. Connective tissue is formed
- D. None of the above.

Answer: B

 [Watch Video Solution](#)

55. Supportive connective tissue means

- A. Tendon
- B. Cartilage and bone
- C. Ligament
- D. Blood and lymph.

Answer: B



[Watch Video Solution](#)

56. Yellow fibres are present in

- A. Bundles
- B. Singly and branched
- C. Singly and unbranched
- D. None of these.

Answer: B



Watch Video Solution

57. Adipose tissues stores

- A. Protein
- B. Carbohydrates
- C. Fat droplets
- D. All the above .

Answer: C



Watch Video Solution

58. In hyaline cartilage , matrix is

- A. Granular

B. Transparent

C. Agranular

D. Semitransparent.

Answer: D



[Watch Video Solution](#)

59. Calcified cartilage is

A. Soft

B. Hard

C. Fibrous

D. None of the above.

Answer: B



[Watch Video Solution](#)

60. Unstriped muscles are present in the

- A. Wall of intestine
- B. Leg muscles
- C. Muscles of fore limb
- D. Heart wall.

Answer: A



Watch Video Solution

61. Muscle fibres having rounded ends are

- A. Unstriped muscles
- B. Smooth muscles
- C. Striped muscles
- D. All the above .

Answer: C



[Watch Video Solution](#)

62. Inter-calated discs are present in

- A. Cardiac muscles
- B. Striped muscles
- C. Unstriated muscles
- D. Ligament .

Answer: A



[Watch Video Solution](#)

63. The cytoplasm of muscle fibre is known as :

- A. Neuroplasm

B. Protoplasm

C. Germplasm

D. Sarcoplasm.

Answer: D



[Watch Video Solution](#)

64. Contractile fibrils of muscles are called

A. Neurofibrils

B. Callogen fibres

C. Myofibrils

D. Yellow fibres.

Answer: C



[Watch Video Solution](#)

65. Each myofibril has a diameter of

- A. 1 to 2 μm
- B. 0.1 to 0.2 μm
- C. .001 to .002 μm
- D. None of the above.

Answer: A



Watch Video Solution

66. Myofibrils show dark and light bands is

- A. Cardiac muscles
- B. Unstriped muscles
- C. Striped muscles
- D. Both A and C.

Answer: D



Watch Video Solution

67. Sarcomere is the unit of

- A. Contraction
- B. Relaxation
- C. Contraction and relaxation
- D. None of the above.

Answer: C



Watch Video Solution

68. Myosin filaments are localized in

- A. Z - Band

B. H-Band

C. A- Band

D. None of the above.

Answer: b



[Watch Video Solution](#)

69. Uninucleate muscles are

A. Smooth muscles

B. Skeletal muscles

C. Voluntary muscles

D. All the above .

Answer: A



[Watch Video Solution](#)

70. Multinucleate muscle cells are

- A. Cardiac muscles
- B. Smooth muscles
- C. Skeletal muscles
- D. All the above .

Answer: C



[Watch Video Solution](#)

71. Which of the muscles are attached to bones ?

- A. Smooth muscles
- B. Skeletal muscles
- C. Cardiac muscles
- D. All the above .

Answer: B



Watch Video Solution

72. Chemical ions responsible for muscle contraction are

- A. Ca^{++} and K^+
- B. Na^+ and K^+
- C. Na^+ and Ca^+
- D. Ca^{++} and Mg^{++} ions.

Answer: D



Watch Video Solution

73. Rhythmical contraction is noticed in

- A. Cardiac muscles

- B. Striped muscles
- C. Unstripped muscles
- D. In all the muscles.

Answer: A

 [Watch Video Solution](#)

74. Muscles get fatigued due to accumulation of

- A. Adenosine triphosphate
- B. CO_2
- C. Lactic acid
- D. Phosphate molecules.

Answer: C

 [Watch Video Solution](#)

75. Mitochondria are more in

- A. Striated muscles
- B. Cardiac muscles
- C. Smooth muscles
- D. All the above .

Answer: B



[Watch Video Solution](#)

76. Striped muscle fibres are held together by

- A. Areolar connective tissue
- B. Adipose tissue
- C. White fibrous tissue
- D. Yellow fibrous tissue.

Answer: A



[Watch Video Solution](#)

77. Major protein constituent of muscle fibre is

- A. Actin
- B. Myosin
- C. Tropomyosin
- D. Reticulin.

Answer: B



[Watch Video Solution](#)

78. Cardiac sphincter muscle is a circular band of

- A. Striated muscles

B. Smooth muscles

C. Cardiac muscles

D. All the above .

Answer: B



Watch Video Solution

79. Cross connections are the characteristic feature of

A. Cardiac muscles

B. Striated muscles

C. Smooth muscles

D. None of the above.

Answer: A



Watch Video Solution

80. Centrosomes are absent in

- A. Nerve cells
- B. Epithelial cells
- C. Germinal cells
- D. All the above .

Answer: A



Watch Video Solution

81. Neurilemma is outer covering of

- A. Blood capillaries
- B. Muscle fibre
- C. Intestine
- D. Nerve fibre.

Answer: D



Watch Video Solution

82. Nervous tissue originates from

- A. Endoderm
- B. Ectoderm
- C. Mesoderm
- D. Mesoderm and ectoderm.

Answer: B



Watch Video Solution

83. Unipolar nerve cell means

- A. Nerve cell with one dendron

B. Nerve cell with many dendrons

C. Nerve cell without dendron

D. None of the above.

Answer: c



[Watch Video Solution](#)

84. Multipolar neuron means

A. With one dendron and one axon

B. With many dendrons and one axon

C. With one dendron and no axons

D. With many dendrons and no axons.

Answer: B



[Watch Video Solution](#)

85. Neuro- fibrils are present in

- A. Cyton
- B. Muscles
- C. Bones
- D. Connective tissue.

Answer: A



Watch Video Solution

86. Plasmalemma of axon is called

- A. Axolemma
- B. Neurilemma
- C. Sacrolemma
- D. None of these.

Answer: A



Watch Video Solution

87. Collateral fibres are given out along its way in

A. Muscle fibre

B. Axon

C. Dendron

D. Dendrites.

Answer: B



Watch Video Solution

88. Myelin sheath is present around the

A. Non- medullated nerve fibre

B. Medullated nerve fibre

C. Medullated and non-medullated nerve fibres

D. Muscle fibres.

Answer: B



[Watch Video Solution](#)

89. Which of the following possesses nodes of Ranvier ?

A. Medullated nerve fibre

B. Non - medullated nerve fibre

C. Muscle fibre

D. Medullated and non-medullated nerve fibres.

Answer: A



[Watch Video Solution](#)

90. The packing cells around nerve cells in brain are called

- A. Histiocytes
- B. Mast cells
- C. Matrix
- D. Neuroglia cells.

Answer: D



Watch Video Solution

91. Bipolar nerve cells are present in

- A. Skin tactile corpuscles
- B. Spinal cord
- C. Retina of eye
- D. All the above .

Answer: C



Watch Video Solution

92. Multipolar nerve cells are present in

- A. Cochlea
- B. Dorsal root ganglia of spinal cord
- C. Retina of eye
- D. Brain.

Answer: D



Watch Video Solution

93. Neuroglia cells are

- A. Astrocytes

B. Oligodendrocytes

C. Microglia

D. All the above .

Answer: D



Watch Video Solution

94. Sensory epithelial cells are modified

A. Nerve cells

B. Columnar cells

C. Glandular cells

D. None of these.

Answer: B



Watch Video Solution

95. Apocrine secretion of gland means

- A. When the product is released but the cell remains intact
- B. When entire contents of cell is discharged with the destruction of the cell
- C. When part of apical cytoplasm is lost
- D. None of these.

Answer: C



Watch Video Solution

96. Wandering cells are

- A. Histiocytes
- B. Mast cells
- C. Leucocytes

D. All the above .

Answer: C



Watch Video Solution

97. Which of the following cells contain fat droplets ?

A. Macrophages

B. Plasma cells

C. Adipose cells

D. Leucocytes.

Answer: C



Watch Video Solution

98. Pigment tissue is present in

A. Choroid

B. Iris

C. Skin

D. All the above .

Answer: D



Watch Video Solution

99. In man the amount of blood is

A. 4 % to 5 %

B. 10 % to 15 %

C. 7 to 8 %

D. More than 15 %

Answer: C



Watch Video Solution

100. Blood plasma is

- A. Alkaline
- B. Acidic
- C. Neutral
- D. None of these.

Answer: A



Watch Video Solution

101. Diapedesis means

- A. Movement of the food in gut
- B. Formation of W.B.C.
- C. The process by which leucocytes squeeze through thin capillary wall

D. Formation of R.B.C.

Answer: C



[Watch Video Solution](#)

102. Number of R.B.C. is more in persons living at hills because

- A. There is less oxygen
- B. Air is more purified
- C. Heat is required to warm the body
- D. None of these.

Answer: A



[Watch Video Solution](#)

103. Name the cells which help in clotting of blood in mammals

- A. Platelets
- B. Thrombocytes
- C. Lymphocytes
- D. Monocytes.

Answer: A

 [Watch Video Solution](#)

104. Respiratory pigment found in R.B.C. is known as

- A. Haemocyanin
- B. Haemoglobin
- C. Haemocyanin and haemoglobin
- D. None of these.

Answer: B

 [Watch Video Solution](#)

105. Haemorrhagic disorder occurs when the platelet count falls to less than

A. 1,50,000 / mm^3

B. 1,00,000/ mm^3

C. 75,000/ mm^3

D. 50,000/ mm^3

Answer: D



Watch Video Solution

106. Collagen is

A. Protein

B. Fat

C. Sugar

D. Starch.

Answer: A



Watch Video Solution

107. Plasma has water to the extent of

A. 80 %

B. 60 %

C. 70 %

D. 90 %

Answer: D



Watch Video Solution

108. Blood platelets are

- A. Nucleated cells
- B. Non- nucleated cells
- C. Non-nucleated cell fragments
- D. Nucleated cell fragments.

Answer: C

 [Watch Video Solution](#)

109. Instead of platelets , the non - mammals possess clotting factor in

- A. Nucleated cells called thrombocytes
- B. RBC
- C. WBC
- D. Plasma.

Answer: A

 [Watch Video Solution](#)

110. Sprain is due to pulling of

- A. Muscles
- B. Ligaments
- C. Tendons
- D. Nerves.

Answer: B



Watch Video Solution

111. Which of the following tissues has the minimum intercellular matrix ?

- A. Blood
- B. Bone
- C. Cartilage

D. Areolar tissue.

Answer: B



Watch Video Solution

112. Collagen fibres are

A. White

B. Yellow

C. Pale

D. Brown .

Answer: A



Watch Video Solution

113. Ligament connects

- A. Muscle to skin
- B. Bone to bone
- C. Muscle to muscle
- D. Muscle to bone .

Answer: B

 [Watch Video Solution](#)

114. Bone marrow is composed of

- A. Areolar tissue and blood vessels
- B. Adipose tissue and fibroblasts
- C. Adipose tissue , areolar tissue and blood
- D. Adipose and areolar tissue .

Answer: C

 [Watch Video Solution](#)

115. Sarcolemma is the outer membrane of

- A. Muscle fibre
- B. Cartilage
- C. Never fibre
- D. Collagen fibre.

Answer: A



Watch Video Solution

116. Power of regeneration is poor in

- A. Brain cell
- B. Bone cell
- C. Chondroblasts

D. Striated muscles.

Answer: A



Watch Video Solution

117. Basic unit of muscle contraction is

A. Actin

B. Myosin

C. Sarcomere

D. Tropomyosin.

Answer: C



Watch Video Solution

118. Muscle immune to fatigue are

- A. Striped
- B. Unstriped
- C. Cardiac
- D. Eye muscles.

Answer: C

 [Watch Video Solution](#)

119. Number of nuclei present in striped muscle fibre is

- A. One
- B. Many
- C. Two
- D. None.

Answer: B

 [Watch Video Solution](#)

120. Characteristics of smooth muscle fibres are

- A. Spindle -shaped , unbranched , unstriated , uninucleate and involuntary
- B. Spindle -shaped , unbranched , unstriped , multinucleate and involuntary
- C. Cylindrical , unbranched , unstriped , multinucleate and involuntary
- D. Cylindrical , unbranched , striated , multinucleate and voluntary.

Answer: A



Watch Video Solution

121. Tendons and ligaments belong to

- A. Muscular tissue

B. Epithelial tissue

C. Fibrous connective tissue

D. Areolar connective tissue.

Answer: C



[Watch Video Solution](#)

122. The cells of cartilage are called

A. Osteocytes

B. Chondrocytes

C. Osteoblasts

D. Odontoblasts.

Answer: B



[Watch Video Solution](#)

123. Difference between bone and cartilage is of

- A. Collagen
- B. Blood vessels
- C. Lymphatic vessels
- D. Haversian canals.

Answer: D



Watch Video Solution

124. Tendon connects

- A. Bone to bone
- B. Bone to muscle
- C. Nerve to muscle
- D. Muscle to muscle .

Answer: B



[Watch Video Solution](#)

125. Endothelium lining a blood vessel is formed of

- A. Ciliated epithelium
- B. Columnar epithelium
- C. Cuboidal epithelium
- D. Simple squamous epithelium .

Answer: D



[Watch Video Solution](#)

126. Ciliated epithelium lines

- A. Stomach

B. Trachea/Bronchus

C. Duodenum

D. Ileum.

Answer: B



[Watch Video Solution](#)

127. The epithelium found in the lining layer of stomach and intestine is

A. Columnar

B. Squamous

C. Stratisfied

D. Pseudostratified.

Answer: A



[Watch Video Solution](#)

128. Epithelium present in cornea , oesophagus , urethra and vagina is

- A. Glandular
- B. Ciliated
- C. Stratified columnar
- D. Stratified squamous .

Answer: D



[Watch Video Solution](#)

129. A bone kept in dil HCl for three days shall

- A. Remain unaltered
- B. Become soft
- C. Break in pieces
- D. Dissolve completely.

Answer: B



Watch Video Solution

130. Heart muscles are

- A. Voluntary and unstriated
- B. Voluntary and striated
- C. Involuntary and striated
- D. Involuntary unstriated.

Answer: C



Watch Video Solution

131. Skeletal tissue found in mammalian pinna is

- A. Calcified cartilage

B. Fibrous cartilage

C. Simple cartilage

D. Elastic cartilage .

Answer: D



Watch Video Solution

132. Tissue connecting bones is

A. Tendon

B. Ligament

C. Areolar tissue

D. Adipose tissue.

Answer: B



Watch Video Solution

133. Striated and voluntary muscles occur in

A. Trachea

B. Lungs

C. Gall bladder

D. Limbs.

Answer: D



Watch Video Solution

134. Heart muscles are

A. Visceral

B. Smooth

C. Skeletal

D. Cardiac.

Answer: D



Watch Video Solution

135. Bundles of striated muscle fibres are enclosed in

- A. Periosteum
- B. Epimysium
- C. Perimysium
- D. Endomysium.

Answer: B



Watch Video Solution

136. Nissal granules occur in

- A. Bone cells

B. Mast cells

C. Nerve cells

D. Chondrocytes .

Answer: C



[Watch Video Solution](#)

137. Nisal granules found in cyton of a neuron and having affinity for basic dyes are composed of

A. DNA

B. RNA

C. Proteins

D. Amino acids

Answer: B



[Watch Video Solution](#)

138. Area of coming together of two neuron ends or between a dendron and axon ends is

- A. Junction
- B. Synapsis
- C. Synapse
- D. Synapticula.

Answer: C



Watch Video Solution

139. Harversian canals are found in

- A. Muscle
- B. Nerve
- C. Cartilage

D. Bone .

Answer: D



Watch Video Solution

140. Membrane lining the marrow cavity is

A. Endosteum

B. Periosteum

C. Perichondrium

D. Pericardium.

Answer: A



Watch Video Solution

141. Haversian canals are found in

- A. Ear
- B. Mammalian bone
- C. Fish and amphibian bone
- D. Simple sponges.

Answer: B

 [Watch Video Solution](#)

142. Blood is a

- A. Epithelial tissue
- B. Nervous tissue
- C. Connective tissue
- D. Muscular tissue.

Answer: C

 [Watch Video Solution](#)

143. Lymph differs from blood in possessing

- A. Only WBC
- B. More RBC and WBC
- C. More RBC and few WBC
- D. More WBC and few RBC.

Answer: A



Watch Video Solution

144. Mineral found in red pigment of vertebrate blood is

- A. Magnesium
- B. Iron
- C. Calcium

D. Copper.

Answer: B



[Watch Video Solution](#)

145. Histamine secreting cells are found in

A. Connective tissue

B. Lungs

C. Muscular tissue

D. Nervous tissue.

Answer: A



[Watch Video Solution](#)

146. Red blood cells are produced/erythropoiesis occurs in

A. Bone marrow

B. Spleen

C. Liver

D. Thymus.

Answer: A



[Watch Video Solution](#)

147. Mast cells occur in

A. Areolar tissue

B. Adipose tissue

C. White fibrous tissue

D. Yellow fibrous tissue.

Answer: A



[Watch Video Solution](#)

148. Transitional epithelium occurs in

- A. Blood vessels
- B. Trachea
- C. Kidney
- D. Ureter/Urinary bladder.

Answer: D



Watch Video Solution

149. Pseudostratified columnar epithelium is found in

- A. Mouth
- B. Stomach/Oesophagus
- C. Kidney

D. Trachea/ Bronchi/Bronchiole/Nasal cavity.

Answer: D



[Watch Video Solution](#)

150. Hardest substance of the body is

A. Bone

B. Enamel

C. Cartilage

D. Tendon.

Answer: B



[Watch Video Solution](#)

151. Haversian canals occur in

A. Humerus

B. Pubis

C. Scapula

D. Clavicle .

Answer: A



Watch Video Solution

152. Multi-unit smooth muscles are found in the wall of

A. Large blood vessels

B. Intestine

C. Stomach

D. Urinary bladder .

Answer: A



Watch Video Solution

153. Large irregular ovoid cells found in areolar tissue are

- A. Fibroblasts
- B. Macrophages
- C. Mast cells
- D. Chromatophores.

Answer: C



Watch Video Solution

154. B- and T-cells required for immune system are produced in

- A. Bone marrow
- B. Liver
- C. Spleen

D. Lymph nodes.

Answer: A



Watch Video Solution

155. Mast cells secrete

A. Serotonin

B. Heparin

C. Histamine

D. All the above .

Answer: D



Watch Video Solution

156. Epithelium forming the inner layer of urinary bladder is

A. Simple squamous

B. Transitional

C. Simple columnar

D. Neurosensory.

Answer: B



Watch Video Solution

157. Human RBCs placed in 1-5 % NaCl solution will

A. Shrink

B. Burst

C. Remain unaffected

D. Swell up.

Answer: A



Watch Video Solution

158. In normal healthy female , the number of RBC/ mm^3 of blood is

A. $6 \cdot 5 - 7 \cdot 0$ million

B. $5 \cdot 5 - 6 \cdot 0$ million

C. $4 \cdot 5 - 5 \cdot 0$ million

D. $3 \cdot 5 - 4 \cdot 0$ million

Answer: C



Watch Video Solution

159. Bone forming cells are

A. Osteoblasts

B. Osteoclasts

C. Chondroclasts

D. Chondroblasts.

Answer: A



[Watch Video Solution](#)

160. Component of blood responsible for producing antibodies is

A. Thrombocytes

B. Monocytes

C. Erythrocytes

D. Lymphocytes.

Answer: D



[Watch Video Solution](#)

161. Afferent nerve fibre carries impulses from

- A. Effector to central nervous system
- B. Receptor to central nervous system
- C. Central nervous system to muscles
- D. Central nervous system to receptors.

Answer: B

 [Watch Video Solution](#)

162. Formation of cartilage bones involves

- A. Deposition of bony matter by osteoblasts and resorption by chondroclasts
- B. Deposition of bony matter by osteoclasts and resorption by chondroblasts
- C. Deposition of bony matter by osteoclasts only
- D. Deposition of bony matter by osteoblasts only.

Answer: A



Watch Video Solution

163. Vitamin K is required for

- A. Formation of thromboplastin
- B. Conversion of fibrinogen to fibrin
- C. Conversion of prothrombin to thrombin
- D. Synthesis of prothrombin .

Answer: D



Watch Video Solution

164. Life span of mammalian of R.B.C. is

- A. 50 days

B. 75 days

C. 120 days

D. 100 days.

Answer: C



Watch Video Solution

165. Horizontal /oblique canals found in long bones of mammals are

A. Haversian canals

B. Volkmann's canals

C. Canaliculi

D. Neural canal.

Answer: B



Watch Video Solution

166. Muscles are connected to humerus by means of

- A. Cartilage
- B. Ligament
- C. Tendon
- D. Adipose tissue.

Answer: C



Watch Video Solution

167. Nodes of Ranvier occur in

- A. Cell body
- B. Right atrium
- C. Right ventricle
- D. Medullated nerve fibres.

Answer: D



Watch Video Solution

168. R.B.C. are found stored in

- A. Bone Marrow
- B. Liver
- C. Spleen
- D. All of the above.

Answer: C



View Text Solution

169. Formation of red blood is called

- A. Haemocytosis

B. Haemolysis

C. Haemopoiesis

D. Haemocytolysis.

Answer: C



Watch Video Solution

170. The surface of nerve fibres bear narrow areas called

A. Schwann cells

B. Schwann nodes

C. Nissl granules

D. Nodes of Ranvier.

Answer: D



Watch Video Solution

171. Besides calcium phosphate the bones contain

- A. Calcium chloride
- B. Magnesium carbonate
- C. Sodium chloride
- D. Potassium/Magnesium phosphate.

Answer: D



[Watch Video Solution](#)

172. Cells of squamous epithelium are

- A. Columnar
- B. Tall with elongated nuclei
- C. Flat plate-like
- D. Cube-like .

Answer: C



Watch Video Solution

173. Fat is stored in

- A. Liver cells
- B. Alveolar tissue
- C. Adipose tissue
- D. Lymph glands.

Answer: C



Watch Video Solution

174. Blood consists of

- A. Plasma + RBC

B. Plasma + WBC + RBC

C. Plasma + RBC + WBC + Platelets

D. Plasma + Bone marrow cells.

Answer: C



[Watch Video Solution](#)

175. Chief difference between RBCs of human and frog is

A. Enucleate RBCs in frog

B. Only human RBCs have haemoglobin

C. Humans RBCs have more nuclei

D. Human RBCs are without nuclei.

Answer: D



[Watch Video Solution](#)

176. Most of the human neurons are

- A. Multipolar
- B. Bipolar
- C. Unipolar
- D. Pseudo-unipolar.

Answer: A



[Watch Video Solution](#)

177. Epithelial tissue with thin flat cells appearing like packed tiles occurs on

- A. Inner lining of cheek
- B. Inner lining of stomach
- C. Inner lining of fallopian tubes
- D. Outer surface of ovary.

Answer: A



Watch Video Solution

178. In Camel, the humps in mainly made of tissue

- A. Areolar
- B. Adipose
- C. Muscular
- D. Skeleton .

Answer: B



Watch Video Solution

179. Blood platelets are present in the blood of

- A. Birds

B. Mammals

C. Reptiles

D. Amphibians.

Answer: B



Watch Video Solution

180. Granulocytes are formed inside

A. Liver

B. Red bone marrow

C. Kidney

D. Small intestine .

Answer: B



Watch Video Solution

181. Blood is

- A. Acidic
- B. Alkaline
- C. Neutral
- D. Variable .

Answer: B



Watch Video Solution

182. Red cell count is carried out by

- A. Haemocytometer
- B. Haemoglobinometer
- C. Sphygmomanometer
- D. Electrocardiogram.

Answer: A



Watch Video Solution

183. In Camel, erythrocytes are

- A. Circular , biconcave , non-nucleated
- B. Oval and nucleated
- C. Circular , biconcave and nucleated
- D. Oval and non-nucleated.

Answer: D



Watch Video Solution

184. Blood clotting requires

- A. Na^+ and K^+

B. Na^+ and prothrombin

C. Na^+ and thromboplastin

D. Ca^{2+} and thromboplastin .

Answer: D



[Watch Video Solution](#)

185. Compound squamous epithelium occurs in

A. Stomach

B. Pharynx

C. Intestine

D. Trachea.

Answer: B



[Watch Video Solution](#)

186. Smooth muscles occur in

- A. Vein
- B. Artery
- C. Uterus
- D. All the above .

Answer: D



Watch Video Solution

187. Mammalian erythrocytes are

- A. Circular
- B. Biconcave
- C. Non-nucleated
- D. All the above .

Answer: D



[Watch Video Solution](#)

188. Muscles develop from

- A. Ectoderm
- B. Mesoderm
- C. Endoderm
- D. All the above .

Answer: B



[Watch Video Solution](#)

189. Bone marrow takes part in

- A. Controlling blood pressure

B. As haemopoietic tissue

C. Assisting kidneys

D. Assisting liver.

Answer: B



[Watch Video Solution](#)

190. Epithelial tissue is

A. Protective covering

B. Reproductive structure

C. Nerve cells

D. Corpuscles.

Answer: A



[Watch Video Solution](#)

191. Muscular tissue is differentiated into

- A. Striped and cardiac
- B. Unstriated , striated and cardiac
- C. Cardiac and unstriated
- D. Striped and unstriated.

Answer: B



Watch Video Solution

192. Units of nervous system are

- A. Cytons
- B. Axons
- C. Neurons
- D. Dendrites.

Answer: C



[Watch Video Solution](#)

193. Agranulocytes are

- A. Eosinophils and neutrophils
- B. Monocytes and lymphocytes
- C. Eosinophils and lymphocytes
- D. Lymphocytes and basophils.

Answer: B



[Watch Video Solution](#)

194. In embryonic stage erythrocytes develop from

- A. Bone marrow

- B. Liver and kidney
- C. Spleen and kidney
- D. Liver and spleen.

Answer: D



[Watch Video Solution](#)

195. Striated muscles are

- A. Syncytial
- B. Multinucleate
- C. With large number of sarcomeres
- D. All the above.

Answer: D



[Watch Video Solution](#)

196. Epithelium of bronchi is

- A. Simple cuboidal
- B. Pseudostratified columnar
- C. Simple squamous
- D. Pseudostratified sensory.

Answer: B



Watch Video Solution

197. Platelets are a source of

- A. Fibrinogen
- B. Calcium
- C. Thromboplastin
- D. Haemoglobin.

Answer: C



[Watch Video Solution](#)

198. Which is unrelated to blood coagulation ?

A. Fibrinogen

B. Fibrin

C. Bilirubin

D. Calcium.

Answer: C



[Watch Video Solution](#)

199. Stratified and non-keratinised squamous epithelium occurs in

A. Epidermis of skin

B. Vagina and cervix

C. Buccal cavity

D. Both B and C.

Answer: D



Watch Video Solution

200. Major component of blood plasma is

A. Water

B. Inorganic substances

C. Organic substances

D. Blood cells .

Answer: A



Watch Video Solution

201. Connective tissue belongs to

- A. Ectoderm
- B. Mesoderm
- C. Endoderm
- D. Any of the above.

Answer: B



[Watch Video Solution](#)

202. Which one is unrelated ?

- A. Keratin
- B. Elastin
- C. Dextrin
- D. Collagen.

Answer: C



Watch Video Solution

203. Thromboplastin required for blood clotting is produced by

- A. Platelets
- B. Erythrocytes
- C. Monocytes
- D. Lymphocytes.

Answer: A



Watch Video Solution

204. Which one has alternate striations and is correctly matched ?

- A. Biceps under autonomous control

B. Iris muscles under control of will

C. Heart muscles , involuntary

D. Muscles of visceral organs under autonomous control .

Answer: C



[Watch Video Solution](#)

205. Maximum number of white blood corpuscles is that of

A. Basophils

B. Neutrophils

C. Monocytes

D. Eosinophils .

Answer: B



[Watch Video Solution](#)

206. Protein present in cartilage is

- A. Cartilagin
- B. Chondrin
- C. Ossein
- D. Oesein.

Answer: B



Watch Video Solution

207. Nissl's granules are made of

- A. Ribosomes/RER
- B. SER
- C. DNA
- D. Golgi bodies.

Answer: A



Watch Video Solution

208. Basement membrane is formed by

- A. Epidermal cells
- B. Endodermal cells
- C. Both A and B
- D. None of the above but present below epithelial cells.

Answer: D



Watch Video Solution

209. Life span of human white blood corpuscles is

- A. 24 hours

B. Less than 10 days

C. 120 days

D. 100 hours.

Answer: B



[Watch Video Solution](#)

210. Inner lining of gut , stomach and liver is made of

A. Simple squamous epithelium

B. Simple columnar epithelium

C. Simple cuboidal epithelium

D. All the above.

Answer: B



[Watch Video Solution](#)

211. Which of the following are involved in body defence ?

- A. Neutrophils
- B. Lymphocytes
- C. Macrophages
- D. All the above.

Answer: D



Watch Video Solution

212. Bone marrow occurs in

- A. Ribs and sternum
- B. Ribs, sternum and cranium
- C. Ribs and cranium
- D. Only ribs.

Answer: B



Watch Video Solution

213. Largest corpuscles in human blood are

- A. Erythrocytes
- B. Monocytes
- C. Lymphocytes
- D. Basophils.

Answer: B



Watch Video Solution

214. Heparin is formed by

- A. Liver cells

B. Plasma cells

C. Blood cells

D. Spleen cells.

Answer: A



Watch Video Solution

215. Prothrombin , albumin and fibrinogen are synthesised by

A. Pancreas

B. Bone marrow

C. Spleen

D. Liver .

Answer: D



Watch Video Solution

216. Regeneration of cartilage can occur from its

- A. Matrix
- B. Plasma
- C. Perichondrium
- D. A piece without perichondrium .

Answer: C



Watch Video Solution

217. Mast cells occur in

- A. Connective tissue
- B. Epithelial tissue
- C. Skeletal tissue
- D. Nervous tissue.

Answer: A



[Watch Video Solution](#)

218. Ground substance of connective tissue is formed of

- A. Phospholipids
- B. Lipids
- C. Monosaccharides
- D. Mucopolysaccharides.

Answer: D



[Watch Video Solution](#)

219. Matrix of hyaline cartilage contains

- A. Collagen

B. Chondrin

C. Ossein

D. All the above.

Answer: B



Watch Video Solution

220. Ends of long bones are covered with

A. Blood cells

B. Ligaments

C. Muscles

D. Cartilage .

Answer: D



Watch Video Solution

221. Erythrocytes of adult mammals are formed in

- A. Spleen
- B. Liver
- C. Bone marrow
- D. Kidney.

Answer: C



Watch Video Solution

222. Histamine is secreted by

- A. Mast cells
- B. Histiocytes
- C. Lymphocytes
- D. Fibroblasts.

Answer: A



Watch Video Solution

223. Blood leucocytes are

- A. Epithelial
- B. Endothelial
- C. Glandular
- D. Connective .

Answer: D



Watch Video Solution

224. Intercalated discs are found in

- A. Skeletal muscle fibres

B. Smooth muscles fibres

C. Cardiac muscle fibres

D. None of the above.

Answer: C



Watch Video Solution

225. One of the factors required for the maturation of erythrocytes is

A. Vitamin B_{12}

B. Vitamin A

C. Vitamin D

D. Vitamin C.

Answer: A



Watch Video Solution

226. Which is not part of nervous tissue ?

- A. Cyton
- B. Axon
- C. Myelin
- D. Intermedin.

Answer: D



[Watch Video Solution](#)

227. Gastric glands are

- A. Simple tubular
- B. Simple coiled tubular
- C. Branched tubular
- D. Compound tubular .

Answer: C



Watch Video Solution

228. Regeneration after injury is absent in

- A. Nervous tissue
- B. Skin epidermis
- C. Tendon
- D. Smooth muscles.

Answer: A



Watch Video Solution

229. What is the oxidation state of iron in haemoglobin ?

- A. Unionic

B. Fe^{2+}

C. Fe^{3+}

D. None of the above.

Answer: B



[Watch Video Solution](#)

230. Chylomicrons are

A. Fat droplets coated with phospholipids

B. Fat droplets coated with cholesterol and protein

C. Undigested proteins

D. Undigested carbohydrates .

Answer: B



[Watch Video Solution](#)

231. Brush bordered epithelium is found in

- A. Trachea
- B. Stomach
- C. Small intestine
- D. Fallopian tube

Answer: C



Watch Video Solution

232. White fibrous tissue is

- A. Nervous
- B. Muscular
- C. Ligament
- D. Tendon.

Answer: D



Watch Video Solution

233. Loose connective tissue is

- A. Areolar
- B. Adipose
- C. Blood
- D. Cartilage.

Answer: A



Watch Video Solution

234. Ensheathing of muscles is called

- A. Tendon

B. Fascia

C. Peritoneum

D. Ligament .

Answer: B



[Watch Video Solution](#)

235. Which one is the principal cation in the plasma of blood ?

A. K^+

B. Na^+

C. Ca^{2+}

D. Mg^{2+}

Answer: B



[Watch Video Solution](#)

236. Ligament is

- A. Modified white fibrous tissue
- B. Inelastic white fibrous tissue
- C. Modified elastic connective tissue
- D. None of the above.

Answer: C



Watch Video Solution

237. Food reserve in muscles is

- A. Glycogen
- B. Fat
- C. Protein
- D. Phosphogen.

Answer: A



[Watch Video Solution](#)

238. Striped muscles are

- A. Syncytial
- B. Uninucleate
- C. Binucleate
- D. Anucleate.

Answer: A



[Watch Video Solution](#)

239. The *pH* of blood is

- A. 8 · 4

B. $7 \cdot 4$

C. $6 \cdot 4$

D. $5 \cdot 4$

Answer: B



Watch Video Solution

240. Which of the following has non-myelinated nerve fibre

A. Cranial nerves

B. Autonomic nerves

C. Optic nerves

D. Spinal nerves .

Answer: B



Watch Video Solution

241. Adjacent epithelial cells are held together by means of

- A. Liposomes
- B. Glyoxisomes/glyoxysomes
- C. Desmosomes
- D. Microsomes.

Answer: C



Watch Video Solution

242. Percentage of haemoglobin in RBCs is

- A. 0.1
- B. 0.2
- C. 0.34
- D. 0.48

Answer: C



Watch Video Solution

243. Vertebrate salivary glands and exocrine part of pancreas are

- A. Apocrine
- B. Holocrine
- C. Both A and B
- D. Merocrine .

Answer: D



Watch Video Solution

244. Immature RBCs fo mammals have

- A. No nucleus

B. Single beaded nucleus

C. Many nuclei

D. Single nucleus .

Answer: D



Watch Video Solution

245. Cytoplasm of a muscle cell is

A. Neuroplasm

B. Sarcoplasm

C. Axoplasm

D. Sarcolemma.

Answer: B



Watch Video Solution

246. Match the columns

Column I	Column II
<i>a</i> Cartilage	<i>p</i> Neurilemma
<i>b</i> Bone	<i>q</i> Sarcolemma
<i>c</i> Muscle Fibre	<i>r</i> Perichondrium
<i>d</i> Neuron	<i>s</i> Periosteum
	<i>t</i> Pericardium

A. a-r , b-s, c-q, d-p

B. a-r , b-t , c-q, d-p

C. a-r, b-s, c-q, d-t

D. a-r,b-s , c-p , d-q

Answer: A



Watch Video Solution

247. Match the columns

	Column I		Column II
<i>a</i>	Erythrocytes	<i>p</i>	Bone
<i>b</i>	Chondrocytes	<i>q</i>	Neuron
<i>c</i>	Osteocytes	<i>r</i>	Cartilage
<i>d</i>	Schwann cells	<i>s</i>	Blood
—	—	<i>t</i>	Adipose Tissue

A. a-s, b-p, c-r, d-q

B. a-s, b-q, c-p, d-t

C. a-s, b-r, c-p, d-q

D. a-s, b-r, c-t, d-p

Answer: C



Watch Video Solution

248. Match the columns

	Column I		Column II
<i>a</i>	Ligament	<i>p</i>	Stores Fat
<i>b</i>	Tendon	<i>q</i>	Connects Bone to Bone
<i>c</i>	Areolar Tissue	<i>r</i>	Connects Muscle to Bone
<i>d</i>	Adipose Tissue	<i>s</i>	Forms Blood cells
—	—	<i>t</i>	Filling Tissue

A. a-q, b-r, c-t, d-s

B. a-q, b-r, c-t, d-p

C. a-q, b-r, c-p, d-s

D. a-q, b-s, c-t, d-q

Answer: B



Watch Video Solution

249. In skeletal muscle Z-line is connected to

A. Actin

B. Myosin

C. Tropomyosin

D. Hensen's line.

Answer: A



Watch Video Solution

250. Processes of osteocytes lie in

A. Dendrites

B. Haversian canals

C. Canaliculi

D. Lamella.

Answer: C



Watch Video Solution

251. Megakaryocytes

- A. Produce leucocytes
- B. Form blood platelets
- C. Are called bone cells.
- D. Are carriers of oxygen.

Answer: B



Watch Video Solution

252. During blood clotting , fibrin is produced by

- A. Thrombokinase
- B. Prothrombin
- C. Liver
- D. Proteolysis.

Answer: B



Watch Video Solution

253. Match column *I* with column *II* and select the correct option from the codes given below

Column I

Column II

- | | | |
|----------------------|-------|--|
| A. Simple columnar | (i) | Wall of heart epithelium |
| B. Cardiac muscle | (ii) | Bone joints |
| C. Adipose tissue | (iii) | Inner lining of stomach and intestine |
| D. Hyaline cartilage | (iv) | Below the skin, in the abdomen, buttocks, th |
| | (v) | Diaphrag |

A. a-r, b-p , c-s , d-q

B. a-r , b-t , c-q ,d-s

C. a-p , b-r , c-s , d-t

D. a-r , b-p , c-t ,d-s

Answer: A



Watch Video Solution

254. Match the columns

	Column I		Column II
<i>a</i>	Harversian Canal	<i>p</i>	Kidney
<i>b</i>	Dendrites	<i>q</i>	Cartilage
<i>c</i>	Sarcolemma	<i>r</i>	Muscle
<i>d</i>	Chondrocytes	<i>s</i>	Nerve cells
—	—	<i>t</i>	Bone

A. a-s, b-t, c-q, d-r

B. a-t, b-s, c-r, d-q

C. a-q, b-r, c-s, d-t

D. a-p, b-r, c-s, d-t

Answer: B



Watch Video Solution

255. Simple epithelium is made of

A. Non-cellular layer of hyaluronic acid

B. Actively dividing cells

C. tightly arranged cells

D. Loosely arranged cells

Answer: D



[Watch Video Solution](#)

256. Cartilage present in trachea , larynx and bronchi is

A. Fibrous

B. Elastic

C. Hyaline

D. Calcified.

Answer: C



[Watch Video Solution](#)

257. In man , the number of R.B.C. per cubic mm of blood is

- A. 4 million
- B. 5 million
- C. 6 million
- D. 0 · 5 million.

Answer: B



Watch Video Solution

258. Goblet cells are

- A. Unicellular glands
- B. Multicellular glands
- C. Stratified epithelium
- D. Dead keratinised cells.

Answer: A



Watch Video Solution

259. Sebaceous glands are

- A. Apocrine
- B. Holocrine
- C. Mesocrine
- D. Eccrine.

Answer: B



Watch Video Solution

260. Glial cells forming blood brain barrier are formed of

- A. Ranvier cells

B. Schwann cells

C. Astrocytes

D. Oligodendroglial cells.

Answer: C



[Watch Video Solution](#)

261. Number of WBCs per mm^3 of human blood is ideally

A. 8000

B. 7000

C. 6500

D. 6000

Answer: A



[Watch Video Solution](#)

262. In the region of joining of two cardiac muscle cells is present

- A. Ligament
- B. Basement
- C. Intercalated disc
- D. Fibres.

Answer: C



Watch Video Solution

263. RBCs are nucleated in

- A. Man
- B. Rabbit
- C. Rat
- D. Frog.

Answer: D



Watch Video Solution

264. Which proteolytic enzyme induce lysis of fibrin during fibrinolysis ?

A. Fibrinogen

B. Plasmin

C. Thrombin

D. VIII Platelet factor.

Answer: B



Watch Video Solution

265. Direction of nerve impulse is reversed in nerve with

A. Axo-axonic

B. Axo-dendritic

C. Axo- axondendritic

D. None of the above.

Answer: A



[Watch Video Solution](#)

266. Cartilage is

A. Non- vascular

B. Poorly vascular

C. Highly vascular

D. Irregularly vascular.

Answer: A



[Watch Video Solution](#)

267. What is sarcomere ?

- A. Z - line to Z-line
- B. Two I - bonds
- C. Two A - bands
- D. Two surfaces of a Z-line.

Answer: A



Watch Video Solution

268. Collagen and elastin are formed by

- A. Macrophages
- B. Fibroblasts
- C. Mast cells
- D. Chondrocytes .

Answer: B



[Watch Video Solution](#)

269. The rarest leucocyte of human blood is

- A. Basophil
- B. Monocyte
- C. Neutrophil
- D. Eosinophil.

Answer: A



[Watch Video Solution](#)

270. Squamous epithelium occurs in inner lining of

- A. Kidney

B. Pancreatic duct

C. Lung alveoli

D. Heart .

Answer: C



Watch Video Solution

271. Platelet plug is associated with

A. Clot retraction

B. Haemostasis

C. Fibrin formation

D. Homeostasis.

Answer: B



Watch Video Solution

272. In nerve cells , proteins are synthesised in

- A. Cell body
- B. Axon
- C. Dendron
- D. Synapses.

Answer: A



Watch Video Solution

273. Bilirubin and biliverdin are derived from

- A. Globin
- B. Haem
- C. Iron
- D. Fat.

Answer: B



Watch Video Solution

274. Protein required for coagulation of blood is

A. Haemoglobin

B. Globulin

C. Fibrinogen

D. Albumin.

Answer: C



Watch Video Solution

275. Branched tubular gland is

A. Salivary

B. Gastric

C. Sebaceous

D. Sweat .

Answer: B



[Watch Video Solution](#)

276. Multinucleate cell is

A. Non - striated muscle

B. Striated muscle

C. Nervous tissue

D. Erythrocyte of reptiles.

Answer: B



[Watch Video Solution](#)

277. Globulin is

- A. Plasma protein
- B. Antigen
- C. Serum
- D. Found in lymphatic tissue.

Answer: A



Watch Video Solution

278. Which is not a component of areolar tissue ?

- A. Macrophage
- B. Plasma cell
- C. Schwann cell
- D. Adipose cell.

Answer: C



Watch Video Solution

279. To prevent clotting , donor's blood is treated with

- A. Sodium glycocholate
- B. Sodium citrate
- C. Heparin
- D. Sodium taurocholate .

Answer: B



Watch Video Solution

280. Blood proteins connected with antibodies are

- A. Albumins

B. β - globulins

C. Gammaglobulins

D. α - globulins .

Answer: C



[Watch Video Solution](#)

281. Ruptured blood cells are not trapped in

A. Liver

B. Spleen

C. Bone marrow

D. Both A and C.

Answer: C



[Watch Video Solution](#)

282. Match the columns

Column I	Column II
<i>a</i> Glycogen	<i>p</i> Hormone
<i>b</i> Globulin	<i>q</i> Binocatalyst
<i>c</i> Steroids	<i>r</i> Antibody
<i>d</i> Thrombin	<i>s</i> Storage Product

A. a-r, b-q, c-s, d-p

B. a-s, b-q, c-p, d-r

C. a-q, b-s, c-r, d-p

D. a-s, b-r, c-p, d-q

Answer: D



Watch Video Solution

283. Characteristic of epithelial tissues is

A. Never produce glands

B. Cells can undergo rapid divisions

C. Abundant vascularisation

D. Large intercellular spaces .

Answer: B



Watch Video Solution

284. Cell body of neuron is called

A. Nissl body

B. Neurolemma

C. Oligodendrocyte

D. Perikaryon.

Answer: D



Watch Video Solution

285. Process of formation of blood is

- A. Haemolysis
- B. Plasmolysis
- C. Haemopoiesis
- D. Haemoneogenesis.

Answer: C



Watch Video Solution

286. Bones are mainly formed by

- A. Calcium and Magnesium
- B. Calcium and Phosphorus
- C. Calcium and Sulphur
- D. Calcium and Iron.

Answer: B



Watch Video Solution

287. Which of the following cells do not form layer and remain structurally separate ?

A. Nerve cells

B. Gland cells

C. Muscle cells

D. Epithelial cells.

Answer: A



Watch Video Solution

288. Nasal septum gets damaged . Its recovery requires cartilage called

- A. Fibrous cartilage
- B. Elastic cartilage
- C. Hyaline cartilage
- D. Calcified cartilage .

Answer: C

 [Watch Video Solution](#)

289. Resorption of bone is carried out by

- A. Osteoclasts
- B. Osteoprogenitors
- C. Osteoblasts
- D. None of the above.

Answer: A

 [Watch Video Solution](#)

290. Hyaline cartilage does not possess

- A. Cells
- B. Lacunae
- C. Fibres
- D. Blood capillaries .

Answer: C



Watch Video Solution

291. Layer of columnar cells with uneven appearance and lining trachea is

- A. Brush border epithelium
- B. Pseudostratified epithelium
- C. Stratified epithelium

D. Ciliated epithelium.

Answer: B



[Watch Video Solution](#)

292. The outer covering of non- myelinated neurons in brain is

A. Neurilemma

B. Axolemma

C. Oolemma

D. Sarcolemma.

Answer: B



[Watch Video Solution](#)

293. Which one is connected with connective tissue alone ?

- A. Blood , bone and skin
- B. Blood , bone and epidermis
- C. Bone , tendon and muscle
- D. Cartilage , adipose tissue and blood.

Answer: D

 [Watch Video Solution](#)

294. Match the columns

	Column I		Column II
(i)	Chondrocyte	(a)	Bone forming
(ii)	Osteocyte	(b)	Cartilage forming
(iii)	Osteoblasts	(c)	Bone maintaing
(iv)	Osteoclast	(d)	Bone eating

- A. (i) -(a) , (ii) - (b) , (iii) - (c) , (iv) - (d)
- B. (i) - (b) , (ii) -(d) , (iii) - (c) , (iv) - (a)
- C. (i) - (b) , (ii) -(c) , (iii) - (a) , (iv) - (d)
- D. (i) - (d) , (ii) - (b) , (iii) - (a) , (iv) -(c).

Answer: C



Watch Video Solution

295. Structure which joints two bones at the joints is formed of

- A. Collagen fibres
- B. Elastic fibres
- C. Chondrocytes
- D. Fibroblasts.

Answer: B



Watch Video Solution

296. A bipolar neuron has

- A. Two axons and two dendrons

- B. One axon and one dendron
- C. Two axon and one dendron
- D. One axon and two dendrons.

Answer: B



[Watch Video Solution](#)

297. Most abundant granulocytes of human blood is

- A. Neutrophil
- B. Eosinophil
- C. Basophil
- D. Monocyte.

Answer: A



[Watch Video Solution](#)

298. In which bones shall have Haversian system

- A. Panther
- B. Python
- C. Pigeon
- D. Pipe Fish.

Answer: A



Watch Video Solution

299. Nissl's granules are absent in

- A. Neuron
- B. Axon
- C. Cyton
- D. Dendrite.

Answer: B



Watch Video Solution

300. Granules contain histamine in

A. Neutrophils

B. Eosinophils

C. Acidophils

D. Basophils.

Answer: D



Watch Video Solution

301. Serum is

A. Plasma of blood

B. Plasma minus gammaglobins

C. Plasma minus fibrinogen

D. Plasma minus Ca^{2+} .

Answer: C



[Watch Video Solution](#)

302. In medullated nerve fibre , nodes of Ranvier represent areas

A. Swellings on axon

B. Myelin sheath touches axon

C. Swelling on cyton

D. Depressions found on cyton.

Answer: B



[Watch Video Solution](#)

303. Largest smooth muscles occur in

- A. Urethra
- B. Uterus of pregnant woman
- C. Leg
- D. Thigh.

Answer: B



Watch Video Solution

304. Fundamental repeating unit of skeletal myofibrils is

- A. Motor unit
- B. Sarcoplasmic reticulum
- C. Sarcomere
- D. Myosin cross bridge.

Answer: C



Watch Video Solution

305. Lining of trachea is made up of

- A. Stratified epithelium
- B. Simple squamous epithelium
- C. Stratified cuboidal epithelium
- D. Pseudostratified epithelium.

Answer: D



Watch Video Solution

306. White fibrous cartilage occurs in

- A. Larynx

B. External ear

C. Trachea

D. Intervertebral discs.

Answer: D



[Watch Video Solution](#)

307. Epithelium lining bronchiole is

A. Columnar and cuboidal

B. Pseudostratified and sensory

C. Squamous and sensory

D. Pseudostratified and columnar.

Answer: A



[Watch Video Solution](#)

308. Collagen is

- A. Lipid
- B. Globular protein
- C. Fibrous protein
- D. Carbohydrate.

Answer: C

 [Watch Video Solution](#)

309. Assertion. RBC production is regulated by kidney.

Reason. Erythropoietin reaches red bone marrow, induces stem cell mitosis and speeds up development of RBC

- A. if both are true with reason being correct explanation
- B. both true but reason not correct explanation
- C. assertion true but reason wrong

D. and both wrong .

Answer: A



[Watch Video Solution](#)

310. Assertion . Histamine is involved in allergic and inflammatory reactions . Reason. Histamine is vasodilator

A. if both are true with reason being correct explanation

B. both true but reason not correct explanation

C. assertion true but reason wrong

D. and both wrong .

Answer: A



[Watch Video Solution](#)

311. Assertion . Mast cells in human body release excessive amount of inflammatory chemicals which cause allergic reactions.

Reason . Allergens in the environment on reaching human body stimulates mast cells in certain individuals

- A. if both are true with reason being correct explanation
- B. both true but reason not correct explanation
- C. assertion true but reason wrong
- D. and both wrong .

Answer: C



[Watch Video Solution](#)

312. Which one of the following is a matching pair of a certain body feature and its value/count in a normal human adult

- A. Urea : 5 - 10 gm/100 ml of blood

B. Blood sugar fasting : 70 - 100 mg/100 ml

C. Total blood volume : 3 - 4 litres

D. ESR in wintrobe method : 9-15 m in males and 20 - 34 m in females.

Answer: B



Watch Video Solution

313. Match the types of WBC listed in column I with the shape of nucleus given under column II . Choose the answer which gives the correct combination of alphabets of two columns .

Column I	Column II
Types of <i>WBC</i>	Shape of Nucleus
<i>a</i> Neutrophils	<i>p</i> Kidney-shaped
<i>b</i> Eosinophils	<i>q</i> S- shaped
<i>c</i> Basophils	<i>r</i> 3 – 5lobes
<i>d</i> Monocytes	<i>s</i> 2lobes
	<i>t</i> disc-shaped

A. $a = r$, $b = t$, $c = p$, $d = q$

B. $a = t$, $b = r$, $c = q$, $d = s$

C. $a = q$, $b = p$, $c = t$, $d = r$

D. $a = r$, $b = s$, $c = q$, $d = p$.

Answer: D



Watch Video Solution

314. In which of the following tissues is the matrix not product of synthesis of its cells?

A. Vascular tissue

B. Osseus tissue

C. Loose connective tissue

D. Adipose tissue.

Answer: A



Watch Video Solution

315. Which one of the following contains the largest quantity of extracellular material ?

- A. Striated muscle
- B. Areolar tissue
- C. Stratified epithelium
- D. Myelinated nerve fibres.

Answer: B



Watch Video Solution

316. Cells of germinal epithelium are

- A. Cuboidal
- B. Columnar
- C. Squamous
- D. Ciliated.

Answer: A



[Watch Video Solution](#)

317. Antibodies are formed by

A. Plasma cells

B. Histiocytes

C. Mast cells

D. None of the above.

Answer: A



[Watch Video Solution](#)

318. What used to be described as Nissl granules in a nerve cell are now identified as

A. Cell metabolites

B. Fat granules

C. Ribosomes

D. Mitrochondria.

Answer: C



[Watch Video Solution](#)

319. Epithelium covering in tongue is

A. Pseudostratified

B. Squamous keratinised

C. Squamous non-keratinised

D. Simple cuboidal.

Answer: C



[Watch Video Solution](#)

320. Intervertebral discs are composed of

- A. Hyaline
- B. Fibrous
- C. Elastic
- D. Calcified .

Answer: B



Watch Video Solution

321. Neuroglial cells are

- A. Secretory cells
- B. Sensory cells
- C. Non-sensory supporting cells

D. Sensory and supporting cells.

Answer: C



[Watch Video Solution](#)

322. Normal level of haemoglobin per 100 ml of blood in a woman is

A. 18 g

B. 14 g

C. 12 g

D. 10g

Answer: B



[Watch Video Solution](#)

323. How do the basophils help in body defence?

- A. Phagocytosis of pathogens
- B. Cell mediated and antibody immunity
- C. Inhibit allergic reaction
- D. Heparin secretion for preventing thrombosis.

Answer: D

 [Watch Video Solution](#)

324. Pancreas is

- A. Exocrine
- B. Endocrine
- C. Both A and B
- D. None of the above.

Answer: C

 [Watch Video Solution](#)

325. The tissue that forms the inner lining of blood vessels is

- A. Epithelium
- B. Connective
- C. Muscle
- D. Nervous .

Answer: A



Watch Video Solution

326. Both erythrocytes and leucocytes are formed in

- A. Thymus
- B. Bone marrow
- C. Arterial walls

D. Lymph nodes.

Answer: B



Watch Video Solution

327. In a neuron , Schwann cells occur in association with

A. Axon

B. Soma

C. Dendrite

D. Axon hillock .

Answer: A



Watch Video Solution

328. ____ acts as a shock absorber to cushion when tibia and femur came together

- A. Ligament
- B. Cartilage
- C. Tendon
- D. Disc.

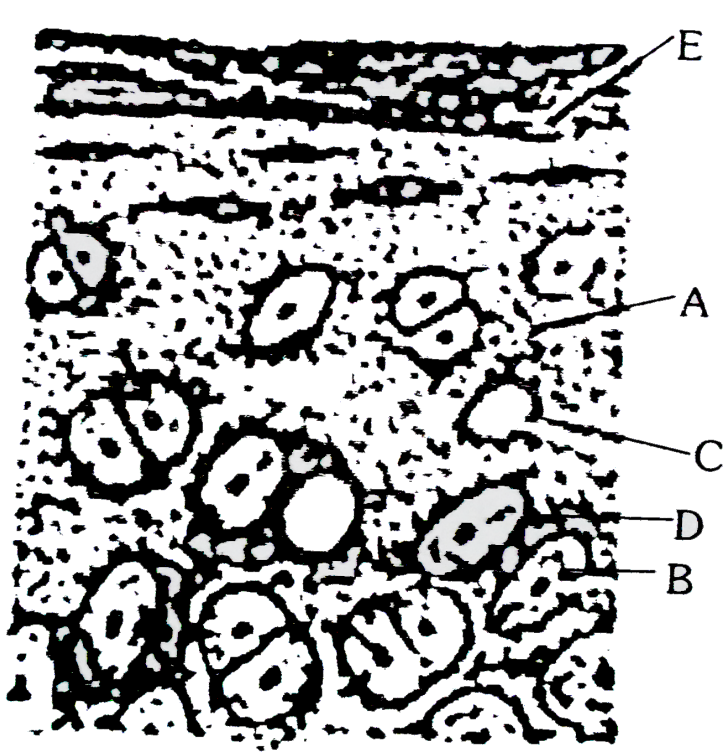
Answer: B



[Watch Video Solution](#)

329. In the diagram of section of Hyaline cartilage, the different parts have been indicated by alphabets, choose the answer in which these

alphabets correctly match with parts they indicate



A. a- chondrin, b - chondrocyte , c - lacun , d - capsular matrix , e -
perichondrium

B. a- chondrin , b - lacuna , c - chondrocyte , d- capsular matrix, e -
perichondrium

C. a- perichodrium , b - chondrocyte , c - lacuna , d - capsular matrix , e -
chondrin

D. a - capsular matrix , b - chondrocyte , c - lacuna , d - perichondrium ,
e - chondrin.

Answer: A



Watch Video Solution

330. Volkman's canals occur in

A. Cartilage

B. Liver

C. Bone

D. Internal ear.

Answer: C



Watch Video Solution

331. Which is not the property of yellow fibres

- A. Contain elastin
- B. Fewer in number
- C. Straight and branched
- D. Provide toughness and strength

Answer: D



Watch Video Solution

332. Which one has abundant white fibres

- A. Tendon
- B. Ligament
- C. Cartilage
- D. Bone.

Answer: A



Watch Video Solution

333. Lining layer of fallopian tubes, nasal passages , bronchi and bronchioles consists of

- A. Squamous columnar epithelium
- B. Ciliated columnar epithelium
- C. Stratified and branched
- D. Cubical epithelium .

Answer: B



Watch Video Solution

334. Major constituent of connective tissue is

- A. Collagen
- B. Carbohydrate
- C. Lipid
- D. Cholesterol.

Answer: A

 [Watch Video Solution](#)

335. Collagen fibres are secreted by

- A. Histiocytes
- B. Fibroblasts
- C. Mast cells
- D. Macrophages.

Answer: B

 [Watch Video Solution](#)

336. Thousand of years old mummies are still in condition as they were before due to non- destruction of

- A. Collagen fibres
- B. White elastin fibres
- C. Yellow elastin fibres
- D. Veins .

Answer: C



Watch Video Solution

337. Which identifies striated muscles ?

- A. Cylindrical , striped and branched
- B. Cylindrical , striped and uninucleate
- C. Spindle , unbranched and uninucleate

D. Cylindrical , syncytial and unbranched .

Answer: D



[Watch Video Solution](#)

338. Which of the following is not syncytial ?

A. Skeletal muscles

B. Tongue muscles

C. Abdominal muscles

D. Smooth muscles.

Answer: D



[Watch Video Solution](#)

339. Which is true of contractile tissue of sphincter ?

1. Mesodermal 2. Contain stretch receptors

3. Rhythmicity 4 . Indefatigible

A. All the four

B. Only 1, 2 and 3

C. Only 1, 2 and 4

D. Only 1, 3 and 4.

Answer: B



Watch Video Solution

340. Choose the odd pair

A. Areolar connective tissue - Collagen

B. Epithelium - Keratin

C. Muscle fibre - Actin

D. Neuron - Melanin.

Answer: D



Watch Video Solution

341. In vertebrates , laying down of bone is often preceded by

A. Cartilage

B. Chitin

C. Platelets

D. Starch.

Answer: A



Watch Video Solution

342. Which is exclusively compound saccular ?

- A. Salivary
- B. Mammary
- C. Sebaceous
- D. Pancreas.

Answer: B

 [Watch Video Solution](#)

343. Conditionl of having a number of nuclei in a muscle fibre is

- A. Polykaryon
- B. Coenocytic
- C. Syncytial
- D. Endoduplication .

Answer: C

 [Watch Video Solution](#)

344. What should be given if an anaemic person has large immature nucleated erythrocytes ?

- A. Iron
- B. Thiamine
- C. Folic acid and cobalamine
- D. Riboflavin.

Answer: C



Watch Video Solution

345. Areolar connective tissue joins

- A. Integument with muscles
- B. Bones with muscles
- C. Bone with bone

D. Fat body with muscles.

Answer: A



Watch Video Solution

346. Match the columns

Column I	Column II
<i>a</i> Squamous	1. Intestinal glands
<i>b</i> Cuboidal	2. Trachea
<i>c</i> Columnar	3. Ovary
<i>d</i> Ciliated	4. Blood vessels
<i>e</i> Pseudostratified	5. Bronchioles

A. a - 5 , b - 4 , c - 2 , d-1 , e-3

B. a - 4 , b - 3 , c-1 , d-5 , e-2

C. a - 4 , b-3 , c-1 , d-2 , e - 5

D. a - 4 , b-5 , c-1 , d-2 , e-3

Answer: B



Watch Video Solution

347. Match the columns

Column I	Column II
<i>a</i> Neutrophils	1. single large nucleus
<i>b</i> Eosinophils	2. 2 – 3lobed nucleus
<i>c</i> Basophils	3. Kidney-shaped nucleus
<i>d</i> Lymphocytes	4. 2 – 7lobed nucleus
<i>e</i> Monocytes	5. Bilobed nucleus

A. a-4 , b-1 , c- 3 , d- 5 , e-2

B. a - 2 , b- 5 , c-1 , d- 4 , e - 3

C. a - 4 , b - 5 , c -2 , d-1 , e- 3

D. a - 2 , b - 4 , c - 5 , d- 3 , e-1

Answer: C



Watch Video Solution

348. Which is a transparent tissue ?

A. Tendon

B. Ligament

C. Fibrous cartilage

D. Hyaline cartilage.

Answer: D



Watch Video Solution

349. Anticoagulant hirudin is found in

A. Scorpion

B. Snake

C. Leech

D. Lizard.

Answer: C



Watch Video Solution

350. Ringer solution contains.

- A. Na^+ and K^+ ions
- B. $Na^+ + Cl^-$ ions
- C. $K^+ + Cl^-$ ions
- D. $Na^+ + K^+ + Cl^-$ ions.

Answer: A



[Watch Video Solution](#)

351. In heart , there are conducting cardiac muscles which consist of fibres called

- A. Myonemes
- B. Purkinje fibres
- C. Telodendria
- D. Columnae carneae.

Answer: B



Watch Video Solution

352. Strong, dense inextensible connective tissue with parallel collagen fibres that connect a muscle with bone is

- A. Elastic tissue
- B. Yellow tissue
- C. Ligament
- D. Tendon.

Answer: D



Watch Video Solution

353. Which one is wrongly matched

A. Squamous epithelium - Skin of Frog

B. Columnar epithelium - Peritoneum of body cavity

C. Ciliated epithelium - Bronchioles

D. Stratified cuboidal epithelium - Oesophagus.

Answer: B



[Watch Video Solution](#)

354. What is correct

A. Neuron = Cyton + Dendrite + Axon + Synapse

B. Lymph = Plasma + RBC + WBC

C. Blood = Plasma + RBC + WBC + Blood platelets

D. Plasma = Blood - Lymphocytes.

Answer: C



[Watch Video Solution](#)

355. Non-keratinised stratified epithelium occurs in

- A. Vagina and cervix
- B. Body cavity and anal canal
- C. Vagina , cervix and buccal cavity
- D. Vagina , cervix , buccal cavity and anal canal .

Answer: D



Watch Video Solution

356. Alveoli of lungs are lined by

- A. Squamous epithelium
- B. Columnar epithelium
- C. Cuboidal epithelium

D. Stratified cuboidal epithelium.

Answer: A



Watch Video Solution

357. Myelin sheath is formed from

A. Nerve cells

B. Glial cells

C. Schwann cells

D. None of the above.

Answer: C



Watch Video Solution

358. Non-cellular layer that connects epithelium to connective tissue is

- A. Dermis
- B. Epidermis
- C. Basement membrane
- D. None of the above.

Answer: C

 [Watch Video Solution](#)

359. Ligament is mainly formed by

- A. Collagen
- B. Elastin
- C. Reticulin
- D. Myosin.

Answer: B

 [Watch Video Solution](#)

360. Three lobed nuclei occur in

- A. Monocytes
- B. Eosinophils
- C. Neutrophils
- D. Basophils.

Answer: D



Watch Video Solution

361. Heparin is secreted by

- A. Oxyntic cells
- B. Mast cells
- C. Goblet cells

D. All the above.

Answer: B



[Watch Video Solution](#)

362. Blood clotting vitamin is

A. A

B. B_6

C. B_{12}

D. K

Answer: D



[Watch Video Solution](#)

363. Which is not phagocytic

A. Monocyte

B. Lymphocyte/Basophil

C. Neutrophil

D. Histiocyte.

Answer: B



Watch Video Solution

364. Cell junctions will be frequent in

A. Thrombocytes

B. Tendon

C. Hyaline cartilage

D. Ciliated epithelium.

Answer: D



Watch Video Solution

365. Which will not coagulate

- A. Blood serum
- B. Blood plasma
- C. Lymph
- D. Whole blood.

Answer: A



Watch Video Solution

366. Which one of the following pairs of structures distinguishes a nerve cell from other types of cell

- A. Vacuole and fibres
- B. Nucleus and mitochondria
- C. Perikaryon and dendrites

D. Flagellum and medullary sheath.

Answer: C



Watch Video Solution

367. Match the columns and find correct combination :

Column I

Column II

- | | |
|-------------------------|---------------------|
| (a) Squamous epithelium | 1. Below skin |
| (b) Hyaline cartilage | 2. Bowman's capsule |
| (c) Adipose tissue | 3. Wall of stomach |
| (d) Smooth muscles | 4. Trachea |
| | 5. Duct of glands |

A. (a) - 5 , (b) - 4 , (c) - 1 , (d) - 3

B. (a) - 5 , (b) - 1 , (c) - 4 , (d) - 2

C. (a) - 2 , (b) - 4 , (c) - 1 , (d) - 3

D. (a) - 2 , (b) - 1 , (c) - 4 , (d) - 3

Answer: C



Watch Video Solution

368. Myelin sheath is not found around nerve fibres of

- A. Fishes
- B. Egg laying mammals
- C. Frog
- D. Cyclostomates.

Answer: D



[Watch Video Solution](#)

369. Bone marrow does not occur in

- A. Reptiles
- B. Birds
- C. Amphibians
- D. Fishes .

Answer: B



Watch Video Solution

370. Non -excitable variously shaped cells found between neurons are

- A. Glial cells
- B. Schwann cells
- C. Dendrites
- D. Nissl bodies .

Answer: A



Watch Video Solution

371. An embryonic connective tissue is

- A. Wolman's jelly

B. Wharton's jelly

C. Wright's jelly

D. None of the above .

Answer: B



[Watch Video Solution](#)

372. Rupture of urinary bladder is prevented by

A. Transitional epithelium

B. Pseudostratified epithelium

C. Stratified cuboidal epithelium

D. Stratified columnar epithelium.

Answer: A



[Watch Video Solution](#)

373. Cell junction facilitating cell to cell communication is

- A. Tight junction
- B. Adhering junction
- C. Gap junction
- D. Desmosomes

Answer: C



Watch Video Solution

374. Structurally olfactory cells are

- A. Unipolar neurons
- B. Multipolar neurons
- C. Bipolar neurons
- D. Neurochemically specialised neurons.

Answer: C



Watch Video Solution

375. Fluid with variable amount of materials is

- A. Urine
- B. Cerebrospinal fluid
- C. Blood
- D. Lymph.

Answer: D



Watch Video Solution

376. Type of tissue that forms glands is

- A. Epithelial

B. Muscular

C. Squamous

D. Cuboidal.

Answer: A



Watch Video Solution

377. Which is not a cellular element of blood ?

A. T-cell

B. B-cell

C. Plasma

D. Monocyte.

Answer: C



Watch Video Solution

378. Carotene pigment occurs in the cells of

- A. Dermis
- B. Epidermis
- C. Adipose tissue
- D. Both B and C.

Answer: B



Watch Video Solution

379. Debove's membrane is a layer of

- A. Epithelial tissue
- B. Muscular tissue
- C. Nervous tissue
- D. Connective tissue.

Answer: D



Watch Video Solution

380. Lining of intestine and kidney in human being is

- A. Ciliated
- B. Brush bordered
- C. Keratinised
- D. Squamous.

Answer: B



Watch Video Solution

381. Which part of neuron is covered by fatty sheath ?

- A. Axon

B. Cyton

C. Dendrite

D. Node of Ranvier.

Answer: A



Watch Video Solution

382. Nerve cells do not divide as they lack

A. Nucleus

B. Golgi body

C. Mitochondria

D. Centrosome.

Answer: D



Watch Video Solution

383. Which leucocytes release histamine , serotonin and heparin ?

- A. Eosinophils
- B. Basophils
- C. Monocytes
- D. Neutrophils.

Answer: B



Watch Video Solution

384. Most active phagocytic white blood cells are

- A. Lymphocytes and macrophages
- B. Neutrophils and eosinophils
- C. Eosinophils and lymphocytes
- D. Neutrophils and monocytes.

Answer: B



[Watch Video Solution](#)

385. Which prevents conversion fo prothrombin to thrombin in an undamaged blood vessel ?

A. Thromboplastin

B. Fibrinogen

C. Heparin

D. Calcium.

Answer: C



[Watch Video Solution](#)

386. Brush border of small intestine cells is formed of

- A. Microvilli
- B. Cilia
- C. Villi
- D. Circular folds.

Answer: A

 [Watch Video Solution](#)

387. Macrophages are modified

- A. Eosinophils
- B. Neutrophils
- C. Monocytes
- D. Basophils.

Answer: C

 [Watch Video Solution](#)

388. Which one is connective tissue ?

- A. Neuron
- B. Nephrons
- C. Islet of Langerhans
- D. Blood.

Answer: D



Watch Video Solution

389. Cell junctions called tight , adhering and gap junctions are found in

- A. Neural tissue
- B. Muscular tissue
- C. Connective tissue

D. Epithelial tissue.

Answer: D



Watch Video Solution

390. The supportive structure of our pinna is also found in

A. Tip of nose

B. Ear ossicles

C. Vertebrae

D. Nails .

Answer: A



Watch Video Solution

391. DNA is absent in

A. Mature spermatozoan

B. Mature RBC

C. Hair root

D. Enucleated ovum.

Answer: B



[Watch Video Solution](#)

392. Mature mammalian RBC is unusual because it

A. Exhibits diapedesis

B. Has no nucleus

C. Is colourless

D. Can change its shape.

Answer: B



[Watch Video Solution](#)

393. In normal healthy individual percentage of adult and foetal haemoglobin , HbA: HbA₂: HbF is

- A. 96 : 2 : 2
- B. 50 : 45 : 5
- C. 45 : 45 : 10
- D. 80 : 10 : 10.

Answer: A



[Watch Video Solution](#)

394. Siderocyte si RBC having

- A. Herring bodies
- B. Russel bodies
- C. Pappenheimer bodies

D. Schuffner's dots.

Answer: C



[Watch Video Solution](#)

395. Myelin of nerve fibres of CNS is produced and maintained by

A. Microglia

B. Schwann cells

C. Astrocytes

D. Oligodendrocytes.

Answer: D



[Watch Video Solution](#)

396. Number of leucocytes in decreasing order in human blood is

A. Eosinophils > basophils > neutrophils

B. Neutrophils > eosinophils > basophils

C. Basophils > eosinphils > neutrophils

D. Eosinophils > neutrophils > basophils.

Answer: B

 [Watch Video Solution](#)

397. Match the columns :

Column I

Column II

- | | |
|----------------|------------------------------------|
| 1. Cuboidal | (a) Epidermis of skin |
| 2. Ciliated | (b) Inner lining of blood vessels |
| 3. Columnar | (c) Inner surface of gall bladder |
| 4. Squamous | (d) Inner lining of fallopian tube |
| 5. Keratinized | (e) Lining of pancreatic dust |

A. 1-e , 2-d , 3-c , 4-b , 5-a

B. 1-e , 2-d , 3 - b , 4 -c , 5-a

C. 1- c , 2-d , 3-e , 4-b , 5-a

D. 1- c , 2-e , 3 -d , 4 -a , 5 -b

Answer: A



Watch Video Solution

398. Schwann cells are associated with

- A. Skeletal muscle
- B. Connective tissue
- C. Nervous tissue
- D. Cardiac muscle

Answer: C



Watch Video Solution

399. Epimysium perimysium and endomysium occur in

- A. Blood vessel
- B. Striated muscle
- C. Nerve
- D. Uterus.

Answer: B

 [Watch Video Solution](#)

400. The area where medullary sheath is absent in the nerve fibre is

- A. Nissal granules
- B. Schwann cells
- C. Node of Ranvier
- D. Schwann node.

Answer: C

 [Watch Video Solution](#)

401. Vitamin K is required for

- A. Synthesis of prothrombin
- B. Change of prothrombin to thrombin
- C. Reaction fo calcium with prothrombin
- D. All the above.

Answer: A



Watch Video Solution

402. Which of the following is not a connecting tissue

- A. Blood
- B. Bone
- C. Lymph

D. Nerve.

Answer: D



Watch Video Solution

403. Skin is

- A. Cuboidal epithelium
- B. Stratified epithelium
- C. Columnar epithelium
- D. Pseudostratified epithelium.

Answer: D



Watch Video Solution

404. Match the animals listed in column I to blood listed in column II

Column I	Column II
<i>a</i> Man	<i>p</i> Plasma and cells are colourless
<i>b</i> Earthworm	<i>q</i> Plasma colourless and nucleated RBC
<i>c</i> Cockroach	<i>r</i> Plasma colourless and enucleated RBC
<i>d</i> Frog	<i>s</i> Plasma red and nucleated colourless RBC
	<i>t</i> Plasma and RBC have haemoglobin.

A. a-r , b-s , c-p , d-q

B. a-s , b-t , c-r , d-q

C. a- p , b-s , c-q , d- r

D. a-t , b-r , c-p , d-s.

Answer: A



Watch Video Solution

405. Stereocilia occur in

A. Columnar epithelium of stomach

B. Pseudostratified columnar epithelium of epididymis

C. Pseudostratified columnar epithelium of trachea

D. Stratified columnar epithelium of pharynx.

Answer: B



[Watch Video Solution](#)

406. In the clotting mechanism pathway , thrombin activates factors

A. VIII , X ,V

B. XI , VIII , X

C. XI , IX , X

D. XI , VIII , V.

Answer: D



[Watch Video Solution](#)

407. Originating in bone marrow , circulating in blood for 1-2 days migrating to connective tissue and forming macrophages is a characteristic of

- A. Monocytes
- B. Basophils
- C. Eosinophils
- D. Lymphocytes.

Answer: A



[Watch Video Solution](#)

408. Matrix of bone and cartilage can be distinguished by the presence of

- A. Lacuna
- B. Chromatophores
- C. Haversian canals

D. Adipose cells.

Answer: C



Watch Video Solution

409. Multi-lobed nucleus and granular cytoplasm are characteristics of which of the WBCs

A. Neutrophils

B. Monocytes

C. Lymphocytes

D. Eosinophils.

Answer: A



Watch Video Solution

410. Which of the following blood cells help in blood coagulation

- A. RBCs
- B. Lymphocytes
- C. Thrombocytes
- D. Basophils.

Answer: C



Watch Video Solution

411. The outer covering of cartilage is called

- A. Peritoneum
- B. Periosteum
- C. Endosteum
- D. Perichondrium.

Answer: D



Watch Video Solution

412. The blood does not clot inside the body because of

- A. Oxygenation of blood
- B. Absence of fibrinogen in blood
- C. Movement of blood
- D. Heparin in blood .

Answer: D



Watch Video Solution

413. RBC count is carried out by

- A. Haemocytometer

B. Haemoglobinometer

C. Sphygmomanometer

D. Electrocardiogram.

Answer: A



Watch Video Solution

414. Fibroblasts , macrophages and mast cells are present in

A. Cartilage tissue

B. Areolar tissue

C. Adipose tissue

D. Glandular epithelium

Answer: B



Watch Video Solution

415. Find out the wrong match

- A. Eosinphils - allergic response
- B. Basophils - secrete histamine and serotonin
- C. Monocytes - secrete heparin
- D. Lymphocytes - immune response

Answer: C



Watch Video Solution

416. Which of these is not found in connective tissue

- A. Collagen fibres
- B. Basement membrane
- C. Hyaluronic acid
- D. Fluid.

Answer: B



[Watch Video Solution](#)

417. The study of tissues is known as

A. Physiology

B. Ecology

C. Histology

D. Anatomy.

Answer: C



[Watch Video Solution](#)

418. Which type of epithelium is involved in a function to move particles or mucus in specific direction

A. Squamous epithelium

B. Cuboidal epithelium

C. Columnar epithelium

D. Ciliated epithelium.

Answer: D



[Watch Video Solution](#)

419. The kind of epithelium which forms inner walls of blood vessels is

A. Columnar epithelium

B. Ciliated columnar epithelium

C. Squamous epithelium

D. Cuboidal epithelium .

Answer: C



[Watch Video Solution](#)

420. Cartilage is a type of

- A. Connective tissue
- B. Epithelial tissue
- C. Skeletal tissue
- D. Muscular tissue.

Answer: C



Watch Video Solution

421. Columnar epithelium is found in

- A. Trachea
- B. Stomach
- C. Lungs

D. Uterus.

Answer: B



Watch Video Solution

422. They are phagocytic in nature

- A. Neutrophil, monocyte and basophil
- B. Neutrophil , monocyte and macrophage
- C. Neutrophil , basophil and macrophage
- D. Acidophil, basophil and lymphocyte.

Answer: B



Watch Video Solution

423. Which human cell does not contain mitochondria

- A. Nerve cells
- B. Red blood cell
- C. White blood cell
- D. Liver cell.

Answer: B

 [Watch Video Solution](#)

424. WBC is called true cell because of

- A. Presence of nucleus
- B. Phagocytosis
- C. Polymorphism
- D. None of the above.

Answer: A

 [Watch Video Solution](#)

425. Cardiac muscle occurs in

- A. Epicardium
- B. Endocardium
- C. Myocardium
- D. All the above.

Answer: C



Watch Video Solution

426. Which is most abundant in the body

- A. Nervous tissue
- B. Muscle tissue
- C. Epithelial tissue

D. Connective tissue.

Answer: D



[Watch Video Solution](#)

427. Muscles contain a red coloured oxygen storing pigment called

A. Haemoglobin

B. Myoglobin

C. Erythrocytin

D. Haemolymph.

Answer: B



[Watch Video Solution](#)

428. Major protein in thick filaments of skeletal muscle fibre in

A. Myosin

B. Actin

C. Tropomyosin

D. Troponin.

Answer: A



[Watch Video Solution](#)

429. Blood cells involved in inflammatory reactions are

A. Basophils

B. Eosinophils

C. Monocytes

D. Neutrophils.

Answer: A



[Watch Video Solution](#)

430. Which statements about muscle contractions are true

- (i) Acetylcholine is released when neural signal reaches motor end plate
- (ii) Muscle contraction is initiated by a signal sent by CNS via a sensory neuron
- (iii) During muscle contraction , isotropic band gets elongated
- (iv) Repeated activation of the muscle can lead to lactic acid accumulation

A. *i* and *iv*

B. *i* and *iii*

C. *ii* and *iii*

D. *i* , *ii* and *iii*

Answer: A



Watch Video Solution

431. Ciliated columnar epithelium occurs in

- A. Bile duct and oesophagus
- B. Eustachian tube and stomach lining
- C. Fallopian tubes and bronchioles
- D. Fallopian tubes and urethra.

Answer: C



Watch Video Solution

432. Type of muscle present in our

- A. Heart are involuntary and unstriated smooth muscles
- B. Intestine are striated and involuntary
- C. Thigh are striated and voluntary
- D. Upper arm are smooth muscle fibres fusiform in shape.

Answer: C



Watch Video Solution

433. Serum is

- A. Blood without fibrinogen
- B. Blood without corpuscles and fibrinogen
- C. Lymph
- D. Lymph without corpuscles .

Answer: B



Watch Video Solution

434. Tendon and ligament are examples of

- A. Loose connective tissue

- B. Special connective tissue
- C. Dense irregular connective tissue
- D. Dense regular connective cell.

Answer: D

 [Watch Video Solution](#)

435. Which is not a neuroglial cell

- A. Oligodendrocyte
- B. Microglia
- C. Astrocyte
- D. Chondrocyte.

Answer: D

 [Watch Video Solution](#)

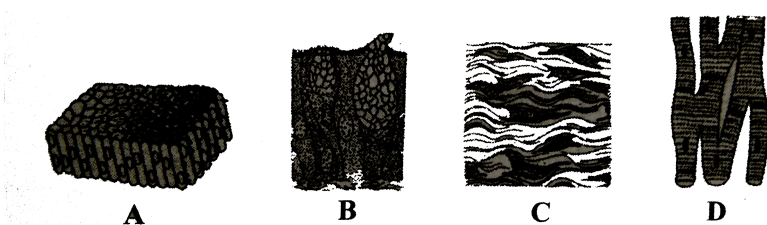
436. Supportive skeletal structures in the human external ears and nose tip are of

- A. Ligament
- B. Areolar tissue
- C. Bone
- D. Cartilage.

Answer: D

 [Watch Video Solution](#)

437. The four figures (A, B, C and D) given below represent four different types of animal tissues. Which one of these is correctly identified in the given options along with its correct location and function ?



A. b-Glandular epithelium - Intestine - Secretion

B. c - Collagen fibres - Cartilage - Attach skeletal muscles to bone

C. d- Smooth muscle tissue - Heart - Heart contraction

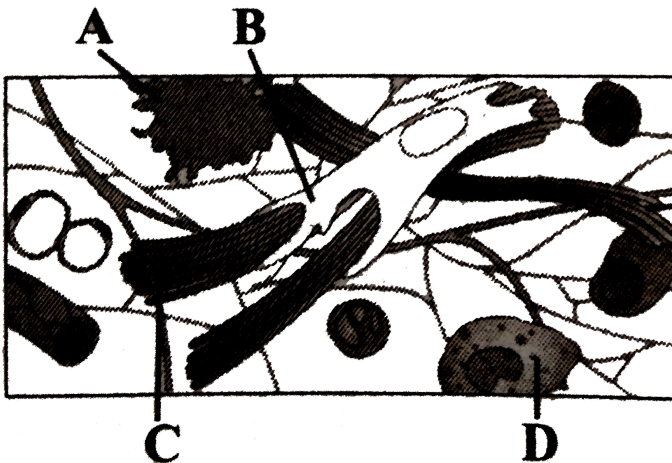
D. a - Columnar epithelium - Nephron - Secretion and Absorption.

Answer: A

 [Watch Video Solution](#)

438. Given is the diagrammatic sketch of a certain type of connective tissue
tissue

Identify the parts labelled as A,B,C and D and select the correct option.



A. Macrophage , Fibroblast , Collagen fibres , Mast cell

B. Mast Cell, Macrophage , Fibroblast , Collagen fibres

C. Macrophage, Collagen fibres , Fibroblast , Mast cell

D. Mast Cell, Collagen Fibres , Fibroblast , Macrophage.

Answer: A



[Watch Video Solution](#)

439. The cell membranes of adjacent cells are fused at this cell junction

A. Macula adherens

B. Zonula adherens

C. Zoluna occludens

D. Nexus.

Answer: C



[Watch Video Solution](#)

440. Which salt predominates in bone matrix

- A. Sodium chloride
- B. Sodium carbonate
- C. Calcium phosphate
- D. Magnesium phosphate .

Answer: C



Watch Video Solution

441. In adult human beings , growth and cell division stop in

- A. Skin cells
- B. Bone marrow
- C. Testes and ovary

D. Bone cells.

Answer: D



Watch Video Solution

442. Epithelium with single layer of tall and slender cells with microvilli on their free surface occurs in

- A. Fallopian tube
- B. Nephron
- C. Blood vessels
- D. Lumen of alimentary canal.

Answer: D



Watch Video Solution

443. Read the following statements and select the correct option

- (i) Blood cells secrete fibres of structural proteins called collagen and elastin
- (ii) Neuroglial cells protect and support the nephrons
- (iii) Osteocytes are present in spaces called lacunae
- (iv) Striated muscle fibres are bundled together in a parallel fashion
- (v) Biceps are involuntary and striated.

- A. (iii) and (iv) alone are wrong
- B. (i), (ii) and (v) alone are wrong
- C. (ii), and (iv) alone are wrong
- D. (i) and (iii) alone are wrong .

Answer: B



Watch Video Solution

444. Which is wrongly matched

A. Fusiform fibres - Smooth muscle

B. Cartilage - Areolar tissue

C. Unicellular glandular cells - Goblet cells

D. Saliva - Exocrine secretion

Answer: B



[Watch Video Solution](#)

445. Polysaccharide found in cartilage matrix is

A. Collagen

B. Hylaine

C. Ossein

D. Chondroitin.

Answer: D



[Watch Video Solution](#)

446. Collagen fibres are characteristic of tissue

- A. Muscle
- B. Epithelial
- C. Connective
- D. Nervous.

Answer: C



Watch Video Solution

447. Mummies of Egypt still have their arteries preserved due to the presence of

- A. Yellow elastic connective tissue fibres
- B. Cartilage
- C. Valves

D. White fibrous connective tissue fibres.

Answer: A



Watch Video Solution

448. Which of the following is a transparent tissue ?

A. Tendon

B. Hyaline cartilage

C. Fibrous cartilage

D. All the above.

Answer: B



Watch Video Solution

449. Mucus secreting cells of epithelial tissue are

A. Plasma cells

B. Mast cells

C. Goblet cells

D. Zymogen cells.

Answer: C



Watch Video Solution

450. The connective tissue that helps in maintaining body temperature in neonates is

A. Densed regular tissue

B. Brown adipose tissue

C. White adipose tissue

D. Areolar tissue.

Answer: B

451. Arrange the following in ascending order of their number per mm^3 present in blood

- (a) Basophils
- (b) Lymphocytes
- (c) Eosinophils
- (d) Neutrophils
- (e) Monocytes.

A. $a \rightarrow c \rightarrow b \rightarrow d \rightarrow e$

B. $c \rightarrow a \rightarrow d \rightarrow e \rightarrow b$

C. $c \rightarrow a \rightarrow d \rightarrow b \rightarrow e$

D. $a \rightarrow c \rightarrow e \rightarrow b \rightarrow d.$

Answer: D

452. Match the lists

I

- (a) Simple squamous epithelium
- (b) Simple cuboidal epithelium
- (c) Nonciliated simple columnar epithelium
- (d) Transitional epithelium
- (e) Pseudostratified nonciliated columnar epithelium

II

- (i) Ureters
- (ii) Epididymis
- (iii) Lining of alveoli
- (iv) Lining of the stomach
- (v) Mucosa of the small intestine





- A. a b c d e
(A) (iii) (iv) (v) (i) (ii)
- B. a b c d e
(B) (i) (ii) (iv) (iii) (v)
- C. a b c d e
(C) (v) (iii) (ii) (iv) (i)
- D. a b c d e
(D) (ii) (iv) (iii) (v) (i)

Answer: A



Watch Video Solution

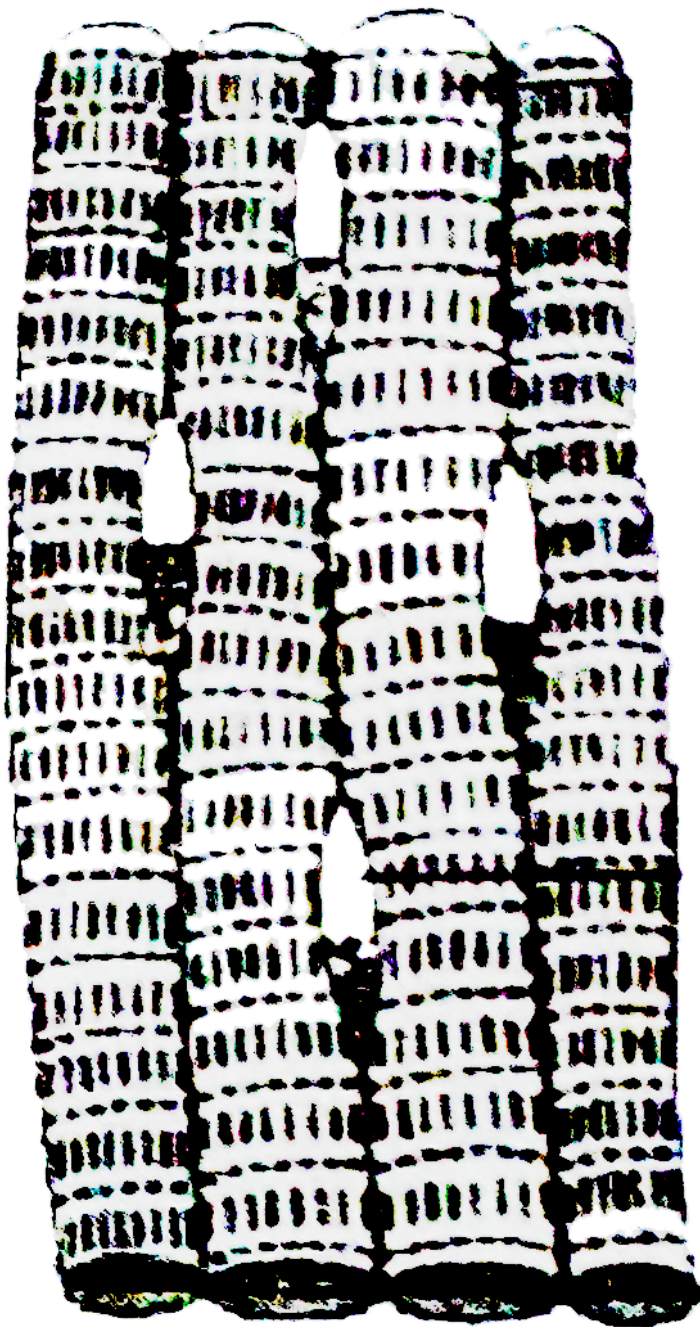
453. Select the option having all the correct characteristics.

Structure	Percentage of WBCs	Function
(A) 	0.3 – 0.5	Phagocytic
(B) 	0.5 – 1.0	Secrete histamine and serotonin
(C) 	30 – 40	Defence against parasites
(D) 	30 – 40	Allergic reactions



Watch Video Solution

454. Identify the tissue shown in the diagram and match with its characteristics and its location



A. Cardiac muscles, unbranched muscles , found in the walls of heart

B. Striated muscles tapering at both ends , attached with bones of ribs.

C. Skeletal muscles , show striations and closely attached with bones of the limbs

D. Smooth muscles , show branching , found in the walls of heart .

Answer: C



Watch Video Solution

455. Histology is study of

A. Tissues

B. Cells

C. Structure discernible with naked eyes

D. Changes in form and structure during development.

Answer: A



[Watch Video Solution](#)

456. Originating in bone marrow , circulating in blood for 1-2 days migrating to connective tissue and forming macrophages is a characteristic of

- A. Lymphocytes
- B. Basophils
- C. Eosinophils
- D. Monocytes.

Answer: D



[Watch Video Solution](#)

457. Read the statements and choose the correct option

1. Neuroglial cells protect and support the neurons
2. Cartilage has a hard and nonpliable matrix rich in magnesium salts

3. Smooth muscles are striated
4. Chondrocytes are bone forming cells
5. Biceps are parallelly bundled.

- A. 2 and 5 alone are wrong
- B. 2, 3 and 4 alone are wrong
- C. 1, 3 and 5 alone are wrong
- D. 1 and 5 alone are wrong .

Answer: B



Watch Video Solution

458. Which is unspecialised loose connective tissue

- A. Nervous system
- B. Blood
- C. Adipose tissue

D. Areolar tissue.

Answer: D



Watch Video Solution

459. The inner lining of ducts of sweat glands and pancreatic duct is formed of epithelium

- A. Pseudostratified
- B. Transitional
- C. Stratified cuboidal
- D. Stratified non-keratinised squamous.

Answer: C



Watch Video Solution

460. Dense regular connective tissue is present in

- A. Ligament and tendon
- B. Joint capsule and Wharton's jelly
- C. Periosteum and endosteum
- D. Pericardium and heart valves.

Answer: A



Watch Video Solution

461. The structural unit of bone is

- A. Chondrin
- B. Cyton
- C. Osteon
- D. Ossein.

Answer: C



Watch Video Solution

462. Read the following statements and choose the correct answer.

- (i) Gap junctions cement adjacent cells together.
- (ii) Areolar tissue contains fibroblasts , macrophages and mast cells.
- (iii) Tight junctions facilitate the cells to communicate with each other
- (iv) Adhering junctions help to stop substances from leaking across tissues
- (v) Cells of connective tissue except blood secrete fibres of structural proteins called elastin.

A. *i* and ii and iii only are wrong

B. *i* , iii and iv only are wrong

C. iii and v only are wrong

D. *i* , ii and v only are wrong .

Answer: B



Watch Video Solution

463. Choose the correctly matched pair

- A. Adipose tissue - Dense connective tissue
- B. Areolar tissue - Loose connective tissue
- C. Cartilage - Loose connective tissue
- D. Tendon - Specialized connective tissue.

Answer: B



Watch Video Solution

464. Choose the correctly matched pair

- A. Moist surface of buccal cavity - Glandular epithelium

B. Tubular parts of nephrons - Cuboidal episthelium

C. Inner surface fo bronchioles - Squamous epithelium

D. Inner lining of salivary ducts - Ciliated epithelium.

Answer: B



[Watch Video Solution](#)

465. All the following are examples of connective tissue except

A. Tendons

B. Ligaments

C. Muscle

D. Adipose tissue.

Answer: C



[Watch Video Solution](#)

466. Which one is a specialised connective tissue among these

- A. Adipose tissue
- B. Bone
- C. Areolar tissue
- D. Fibroblasts.

Answer: B



Watch Video Solution

467. Muscles of heart are

- A. Striated and voluntary
- B. Nonstriated and voluntary
- C. Striated unbranched and involuntary
- D. Striated , branched and involuntary .

Answer: D



[Watch Video Solution](#)

468. Skeletal muscle fibre is a "Syncytium" which means it is

- A. Made up of many fibres
- B. Made up of many proteins
- C. Long and slender
- D. Multinucleated.

Answer: D



[Watch Video Solution](#)

469. Choose the wrong statement with reference to smooth muscles

- A. Myofibrils show alternate dark and light bands

B. They are spindle-shaped uninucleate cells

C. Their contractions are under the control of autonomous nervous system

D. They exhibit prolonged contractions.

Answer: A

 [Watch Video Solution](#)

470. Wharton's jelly present in umbilical cord is an example of

A. Adipose tissue

B. Mucus connective tissue

C. Areolar tissue

D. Elastic connective tissue.

Answer: B

 [Watch Video Solution](#)

471. Assertion (A). In cardiac muscles , impulses are transmitted rapidly .
Reason (R) . Gap junctions allow quick passage of ions from one cell to the other.

- A. Both A and R are true and R is correct explanation of A
- B. Both A and R are true but R is not correct explanation of A
- C. A is true but R is false
- D. A is false but R is true.

Answer: A



[Watch Video Solution](#)

472. The tissue covering the external surface of animal and internal surface of visceral organs is

- A. Adipose tissue

B. Connective tissue

C. Cartilaginous tissue

D. Epithelial tissue.

Answer: D



Watch Video Solution

473. Smooth muscles are

A. Voluntary, spindle-shaped , uninucleate

B. Involuntary , fusiform , nonstriated

C. Voluntary , multinucleate , cylindrical

D. Involuntary , cylindrical , striated.

Answer: B



Watch Video Solution

474. Choose the incorrect statement from the following

- A. Tendons attach muscle to bone
- B. Ciliated epithelium is the modified columnar epithelium
- C. Adipose tissue is a type of dense connective tissue
- D. Cartilage is made up of chondrocytes.

Answer: C



Watch Video Solution

475. The kind of epithelial cells that form a lining of neck of renal tubule is

- A. Glandular
- B. Columnar
- C. Ciliated cuboidal
- D. Ciliated columnar.

Answer: C



Watch Video Solution

476. Choose the wrong statement

- A. Tight junctions help to stop substances from leaking across a tissue
- B. Adhering junctions perform cementing to keep neighbouring cells together
- C. Gap junctions facilitate the cells to communicate with each other by connecting the nuclei of adjoining cells
- D. The main function of cuboidal epithelium are secretion and absorption.

Answer: C



Watch Video Solution

477. Match the following

I

- (i) Squamous epithelium
- (ii) Dense regular connective
- (iii) Glandular epithelium
- (iv) Specialised connective
- (v) Dense irregular connective tissue

II

- (a) Bone
- (b) Skin tissue
- (c) Air sacs of lungs
- (d) Tendon
- (e) Goblet cells

A. i-b , ii - e, iii-c , iv -d , v-a

B. i-c , ii-e , iii-a , iv-b , v-d

C. i-c , ii-d , iii-e , iv-a , v-b

D. i-e , ii-a, iii-b , iv-d , v-c

Answer: C



Watch Video Solution

478. Statement (S) White adipose tissue is predominant in infants and has several small lipid droplets and numerous mitochondria

Reason. White fat is metabolically less active

- A. Both S and R are correct , R is correct explanation to S
- B. Both S and R are correct . R is not correct explanation to S
- C. S is correct but R is incorrect
- D. S is not correct but R is correct .

Answer: D

 [Watch Video Solution](#)

- 479.** Choose the correct statements with reference to hyaline cartilage
- (a) It is bluish white translucent and glass like cartilage
 - (b) Matrix shows collagen fibres and elastin fibres
 - (c) It forms embryonic endoskeleton in cyclostomes and adult cartilage fishes
 - (d) It is the strongest cartilage with perichondrium.
- A. b , c and d
 - B. a and c

C. a ,b and d

D. b and c.

Answer: B



[Watch Video Solution](#)

480. Desmosome are

A. Specialised thickened areas that facilitate cell adhesion

B. Site for storage of lecithin and pigment

C. Reservoir for peroxidases and catalases

D. Found in E. coli and Streptococcus.

Answer: A



[Watch Video Solution](#)

481. Which type of tissue correctly matches with its location

- A. Cuboidal epithelium - Lining of stomach
- B. Smooth muscle - Wall of intestine
- C. Areolar tissue - Tendons
- D. Transitional epithelium - Tip of nose.

Answer: B



Watch Video Solution

482. In the figure which option gives the correct identification

- A. d-unicellular glandular epithelium , goblet cells , secrete saliva
- B. b-squamous epithelium , walls of blood vessels , form a diffusion boundary
- C. a- cubidal epithelium , ducts of glands , secretion and absorption

D. c-columnar epithelium , lining of stomach , secreion and absorbtion.

Answer: D



[View Text Solution](#)

483. Gerdy's fibres we

A. Ligament of neck

B. Ligament of ankle

C. Ligament of palm

D. Ligament of face.

Answer: C



[Watch Video Solution](#)

[Check Your Grasp](#)

1. In origin , epithelium is

- A. Ecotodermal
- B. Mesodermal
- C. Endodermal
- D. All the above.

Answer: D



[Watch Video Solution](#)

2. Stereocilia occurs on some of the cells lining

- A. Digestive tract
- B. Male reproductive tract
- C. Female reproductive tract
- D. Urinary tract.

Answer: B



Watch Video Solution

3. Mucoïd connective tissue occurs in

- A. Subcutaneous regions
- B. Around reproductive organs
- C. Umbilical cord
- D. Placenta.

Answer: C



Watch Video Solution

4. Brown fat occurs in

- A. Embryo

B. Liver

C. Around kidneys

D. Eye cushion.

Answer: A



Watch Video Solution

5. The term histology was coined by

A. Malpighi

B. Bichat

C. Mayer

D. Hertwig.

Answer: C



Watch Video Solution

6. An epithelium lacking basement membrane is

- A. Sensory
- B. Glandular
- C. Pseudostratified
- D. Transitional.

Answer: D



[Watch Video Solution](#)

7. Most abundant protein of the body is

- A. Collagen
- B. Elastin
- C. Reticulin
- D. Keratin.

Answer: A



[Watch Video Solution](#)

8. Major constituent of human body is

- A. Skeleton
- B. Mucles
- C. Connective tissue
- D. Extracellular fluid.

Answer: B



[Watch Video Solution](#)

9. Largest erythrocytes occur in

- A. Llama

B. Whale

C. Amphiuma

D. Musk Deer.

Answer: C



Watch Video Solution

10. The tissue with least power of regeneration is

A. Bone

B. Cartilage

C. Adipose tissue

D. Nervous.

Answer: D



Watch Video Solution

