

## BIOLOGY

### BOOKS - MTG BIOLOGY (ENGLISH)

## TRANSPORT IN PLANTS

#### Means Of Transport

1. Statement 1: the process of diffusion does not require any input of energy.

Statement 2: Diffusion involves movement of

particles from a region of higher concentration to a region of lower concentration.

A. Both statements 1 and 2 are correct.

B. Statement 1 is correct but statement 2 is incorrect.

C. Statement 1 is incorrect but statement 2 is correct.

D. Both statements 1 and 2 are incorrect.

**Answer: A**



**Watch Video Solution**



2. Movement of the molecules of solids, gases or liquids from the region of their higher concentration to the region of their lower concentration is known as

A. diffusion

B. osmosis

C. imbibition

D. active transport.

**Answer: A**



**Watch Video Solution**

3. The process of diffusion is involved in

- A. respiration
- B. photosynthesis
- C. transpiration
- D. all of these.

**Answer: D**



**Watch Video Solution**

4. The type of diffusion in which substances move across the membrane along their concentration

gradient in the presence of certain carriers or transport proteins is called as

- A. simple diffusion
- B. facilitated diffusion
- C. osmosis
- D. active transport.

**Answer: B**



**Watch Video Solution**

## 5. Facilitated diffusion

- A. needs a carrier protein
- B. is an active process
- C. occurs against the concentration gradient
- D. needs ATP.

**Answer: A**



**Watch Video Solution**

6. Select the incorrect statement regarding facilitated diffusion.

- A. It is a very specific process.

B. It is a passive process.

C. It helps the hydrophilic substances to be transported across the membrane.

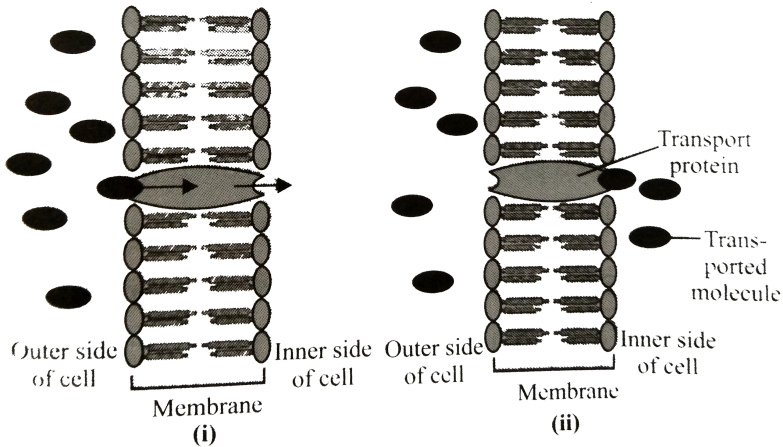
D. It is faster than active process.

**Answer: D**



**Watch Video Solution**

7. Refer to the given figure. What does it represent?



A. Simple diffusion

B. Facilitated diffusion

C. Osmosis

D. Active transport.

**Answer: B**



8. When transport proteins simultaneously move two molecules across a membrane in the same direction ,the process is called

A. uniport

B. antiport

C. symport

D. diffusive port.

**Answer: C**



**Watch Video Solution**

9. In passive transport across a membrane, when two protein molecules move in opposite direction it is called as

A. uniport

B. antiport

C. symport

D. co-port.

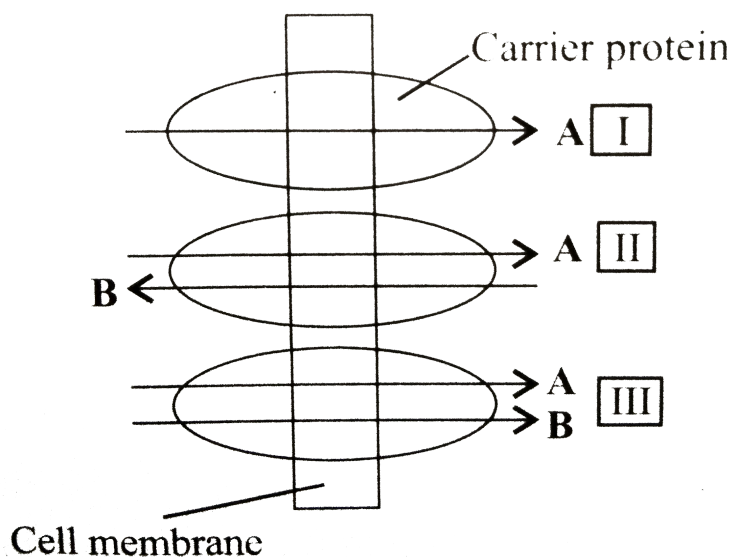
**Answer: B**



**Watch Video Solution**



10. The given figure shows transport of two molecules *A* and *B* through three different modes of facilitated diffusion. Select the correct option regarding it.



- |    |              |           |            |
|----|--------------|-----------|------------|
|    | <i>I</i>     | <i>II</i> | <i>III</i> |
| A. | (a) Uniport  | Symport   | Antiport   |
|    | <i>I</i>     | <i>II</i> | <i>III</i> |
| B. | (a) Uniport  | Antiport  | Symport    |
|    | <i>I</i>     | <i>II</i> | <i>III</i> |
| C. | (a) Antiport | Uniport   | Symport    |

	<i>I</i>	<i>II</i>	<i>III</i>
D. (a)	Antiport	Symport	Uniport

**Answer: B**



**View Text Solution**

11. Smaller, lipid soluble diffuse faster through cell membrane, but the movement of hydrophilic substances is facilitated by certain transporters which are chemically

A. proteins

B. carbohydrates

C. lipids

D. phospholipids.

**Answer: A**



**Watch Video Solution**

**12.** Which of the following is true about Active transport?

A. uses energy to pump molecules against the concentration gradient

B. is as active process

C. is carried out by membrane proteins

D. all of these.

**Answer: D**



**Watch Video Solution**

**13.** Uphill transport *I. e.* movement of substances from their lower concentration to their higher concentration occurs in

A. simple diffusion

B. facilitated diffusion

C. active transport

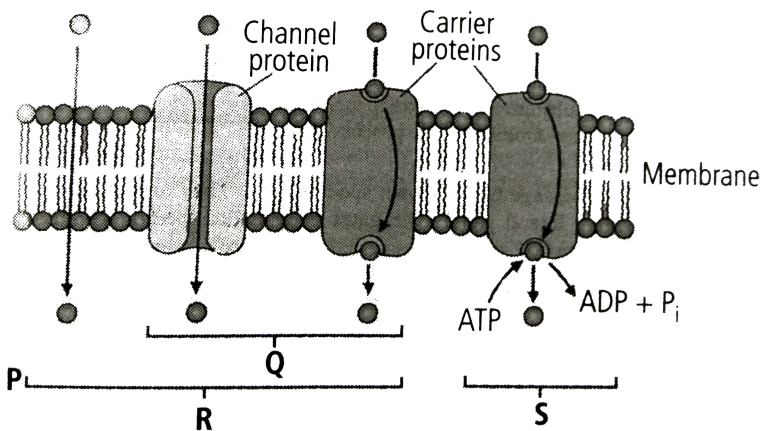
D. both (b) and (c).

Answer: C



View Text Solution

14. Refer to the given figure and identify  $P$ ,  $Q$ ,  $R$  and  $S$ .



A.

<i>P</i>	<i>Q</i>	<i>R</i>	<i>S</i>
Facilitated diffusion	Simple diffusion	Active transport	Passive transport

B.

<i>P</i>	<i>Q</i>	<i>R</i>	<i>S</i>
Simple diffusion	Facilitated diffusion	Passive transport	Active transport

C.

<i>P</i>	<i>Q</i>	<i>R</i>	<i>S</i>
Simple diffusion	Facilitated diffusion	Active transport	Passive transport

D.

<i>P</i>	<i>Q</i>	<i>R</i>	<i>S</i>
Facilitated diffusion	Simple diffusion	Passive transport	Active transport

**Answer: B**



**View Text Solution**

15. Refer to the given table and select the option that correctly fills the blanks in it.

Property	Simple diffusion	Facilitated transport	Active transport
Highly selective	<b>A</b>	Yes	<b>B</b>
Uphill transport	No	<b>C</b>	Yes
Requires ATP	No	<b>D</b>	Yes

- A. *A B C D*  
*No Yes No No*
- B. *A B C D*  
*Yes Yes Yes No*
- C. *A B C D*  
*No No No Yes*
- D. *A B C D*  
*No Yes Yes Yes*

**Answer: A**



[View Text Solution](#)

## Plant Water Relations

1. Osmosis is a special kind of diffusion, through which water diffuses across the cell membrane the rate and direction of osmosis depends upon

- A. pressure gradient
- B. concentration gradient
- C. both (*a*) and (*b*)
- D. none of these.



**Answer: C**



**Watch Video Solution**

2. The given table shows properties of four cell systems  $A$ ,  $B$ ,  $C$  and  $D$  the maximum rate of inward diffusion of water will be observed in which of these system ?

System	Intracellular concentration of water	Extracellular concentration of water
A	0.09 M	0.11 M
B	0.2 M	0.5 M
C	0.05 M	0.7 M
D	0.03 M	0.6 M

A. System  $A$

B. System  $B$

C. System  $C$

D. System  $D$

**Answer: C**



**Watch Video Solution**

**3.** If some solute is dissolved in pure water, its water potential

A. remains same

B. increases

C. decreases

D. first decreases then increases.

**Answer: C**



**Watch Video Solution**

**4.** Read the following statements and select the correct option.

Statement (i) Pure water has the highest water potential, *i. e.* zero.

Statement (ii) Process of diffusion does not require

any input of energy.

Statement (iii) Water moves from the system containing water at higher water potential to the one having lower water potential.

A. Statements (i) and (ii) are correct.

B. Statements (ii) and (iii) are correct.

C. Statements (i) and (iii) are correct.

D. Statements (i), (ii) and (iii) are correct.

**Answer: D**



**Watch Video Solution**

5. If  $\Psi_w$  = water potential,  $\Psi_s$  = solute potential,  $\Psi_p$  = pressure potential then select the correct equation showing their inter-relation.

A.  $\Psi_w = \Psi_s - \Psi_p$

B.  $\Psi_w = \Psi_s + \Psi_p$

C.  $\Psi_s = \Psi_w + \Psi_p$

D.  $\Psi_w = \Psi_s = \Psi_p$

**Answer: B**



**View Text Solution**

6. Water potential of a flaccid cell will be

A.  $\Psi_w = \Psi_s$

B.  $\Psi_s = \Psi_p$

C.  $\Psi_w = 0$

D.  $\Psi_w = \Psi_s - \Psi_p$

**Answer: A**



**Watch Video Solution**

7. Water passes into a cell due to

A. Op

B. DPD

C. turgor pressure

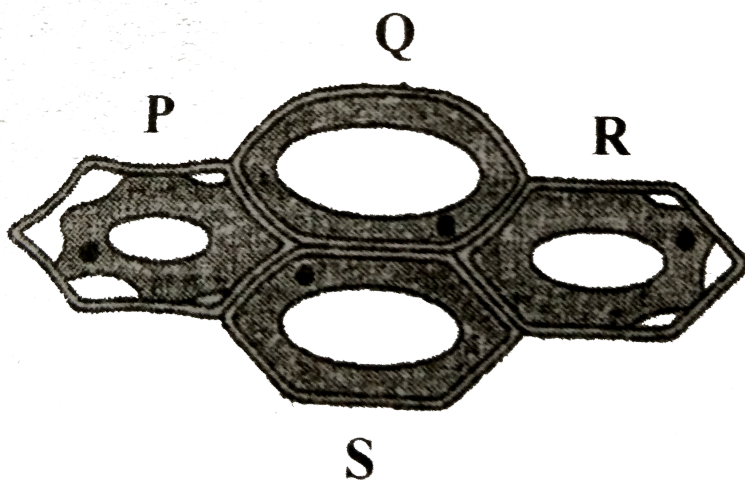
D. diffusion.

**Answer: B**



**Watch Video Solution**

8. Which out of the four plant cells ( $P$ ,  $Q$ ,  $R$  and  $S$ ) would not exhibit any wall pressure?



A.  $P$  and  $Q$

B.  $Q$  and  $S$

C.  $P$  and  $R$

D.  $R$  and  $S$

**Answer: C**



**Watch Video Solution**



9. In a fully turgid cell

A.  $\Psi_w = \Psi_s + \Psi_\rho$

B.  $\Psi_w = \text{zero}$

C.  $\Psi_w = -\Psi_s - \Psi_\rho$

D.  $\Psi_w = \Psi_s = \Psi_\rho$

**Answer: B**



**Watch Video Solution**

10. Cell wall of plant cell is

- A. semi-permeable
- B. selectively permeable
- C. fully permeable
- D. impermeable.

**Answer: C**



**Watch Video Solution**

**11.** Read the given statements and select the correct ones.

A membrane which permits the passage of pure solvent molecules to pass through it and not the

solute particles is called semi-permeable.

A membrane which allows some substances to pass through it more readily than other is known as selectively / differentially permeable.

All living biological membranes are perfectly semi-permeable.

A. (a) and (ii)

B. (ii) and (iii)

C. (i) and (iii)

D. (i), (ii) and (iii)

**Answer: A**



**Watch Video Solution**

**12.** Which of the following biological membrane is semi-permeable?

A. Fish and animal bladders

B. Egg membrane

C. Plasma membrane of cell

D. all of these.

**Answer: D**



**Watch Video Solution**

**13.** The plant cell cytoplasm is surrounded by both cell wall and cell membrane. The specificity of transport of substances is mostly across the cell membrane, because

- A. cell membrane is impermeable
- B. cell membrane is selectively permeable
- C. cell membrane is fully permeable
- D. cell wall is impermeable

**Answer: B**



**View Text Solution**

**14.** Movement of solvent molecule from a region of its higher concentration to a region of its lower concentration through a semi-permeable membrane is referred to as

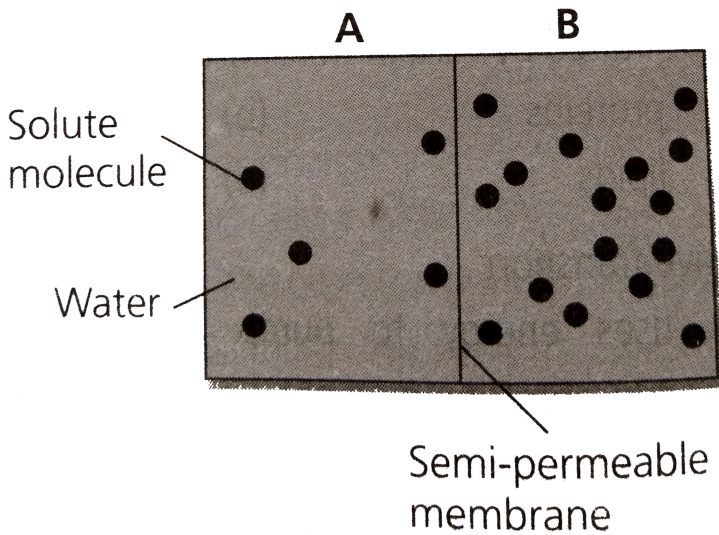
- A. simple diffusion
- B. facilitated diffusion
- C. osmosis
- D. active transport.

**Answer: C**



**View Text Solution**

15. Refer to the given figure and select the correct statement.



- A. Solution of chamber *B* has a lower water potential than chamber *A*.
- B. Solution of chamber *A* has lower solute potential than chamber *B*.

C. Solution of chamber  $B$  has lower solute potential than chamber  $A$ .

D. Both (a) and (c)

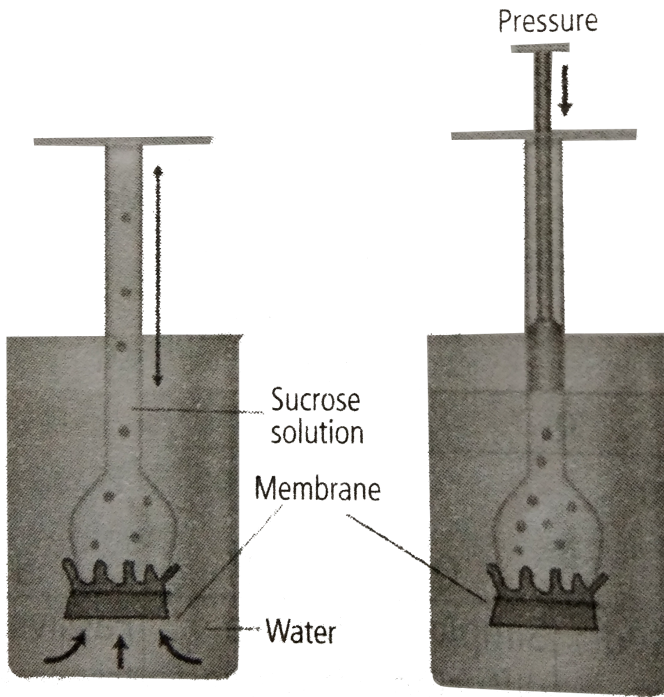
**Answer: D**



**View Text Solution**

**16.** Refer to the given figure and select the correct option regarding this.





A. Water will diffuse across the membrane to raise the level of solution in the funnel.

B. Pressure can be applied to raise the water movement into the funnel.

C. Sucrose solution is an osmotically active solution which cannot absorb water.

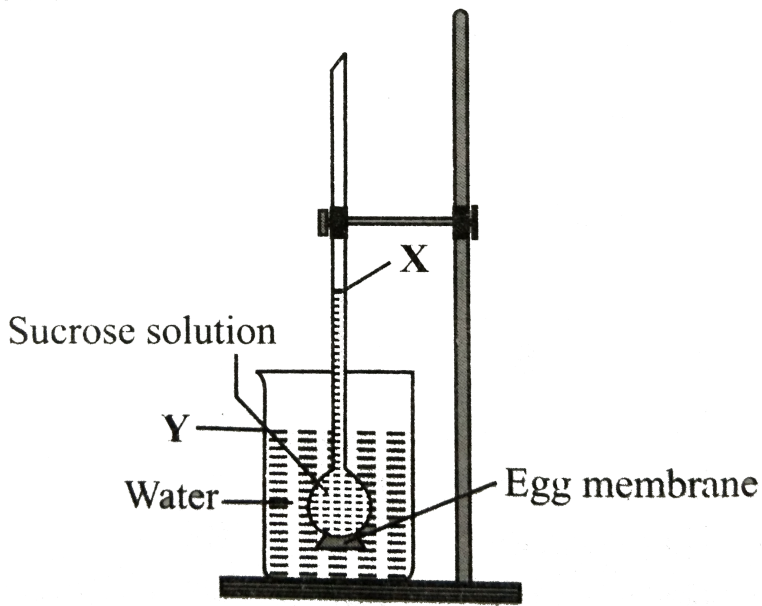
D. all of these.

**Answer: A**



**View Text Solution**

**17.** Given figure represents demonstration of osmosis by egg membrane osmoscope.



After few days which of the following would have occurred?

- A. A rise in level *X* and a drop in level *Y*.
- B. A drop in level *X* and a drop in level *Y*.
- C. A rise in level *X* and a rise in level *Y*.
- D. A drop in level *X* and a rise in level *Y*.

Answer: A



View Text Solution

18. If  $DPD$  represents diffusion pressure deficit,  $OP$  is the osmotic pressure and  $TP$  is the turgor pressure then which of the following equations is correct?

A.  $DPD = OP = TP$

B.  $DPD = OP + TP$

C.  $DPD = OP - TP$

D.  $DPD = OP$

**Answer: C**



**View Text Solution**

19. Water moves from a cell with \_\_\_\_ *DPD* to a cell with \_\_\_\_ *DPD*.

A. higher, lower

B. lower, higher

C. lower, lower

D. higher, higher

**Answer: B**



20. Two adjacent cells  $A$  and  $B$  are being studied.

Cell  $A$  has  $OP$  of 10 atm and  $TP$  of 6 atm. Cell  $B$  has  $OP$  of 10 atm and  $TP$  of 4 atm.

Movement of water will occur from

- A. cell  $A$  to cell  $B$
- B. cell  $B$  to cell  $A$
- C. no movement of water
- D. cannot be determined.

**Answer: A**



21. If a cell  $A$  with  $DPD = 5$  bars is connected to cells  $B$ ,  $C$  and  $D$  whose  $OP$  and  $TP$  are respectively 5 and 5, 10 and 4 and 8 and 3 the flow of water will be

A.  $C \rightarrow A$ ,  $B$  and  $D$

B.  $A$  and  $D \rightarrow B$  and  $C$

C.  $A \rightarrow B$ ,  $C$  and  $D$

D.  $B \rightarrow A$ ,  $C$  and  $D$

**Answer: D**



22. Which option is true for a fully turgid cell ?

A.  $OP = DPD$

B.  $OP = Zero$

C.  $DPD = Zero$

D.  $TP = zero$

**Answer: C**



**View Text Solution**



**23.** If a cell  $A$  with  $DPD_5$  atm is surrounded by many cells with  $DPD_4$  atm then

A. the net movement of water will be from cell  $A$  to the surrounding cells

B. net movement of water will be from the surrounding cell to cell  $A$

C. water will not move at all

D. water movement will depend on other unknown factors.

**Answer: B**



24. The cell  $A$  has an osmotic potential of  $-20$  bars and a pressure potential of  $+6$  bars. What will be its water potential?

A.  $-14\bar{s}$

B.  $+14\bar{s}$

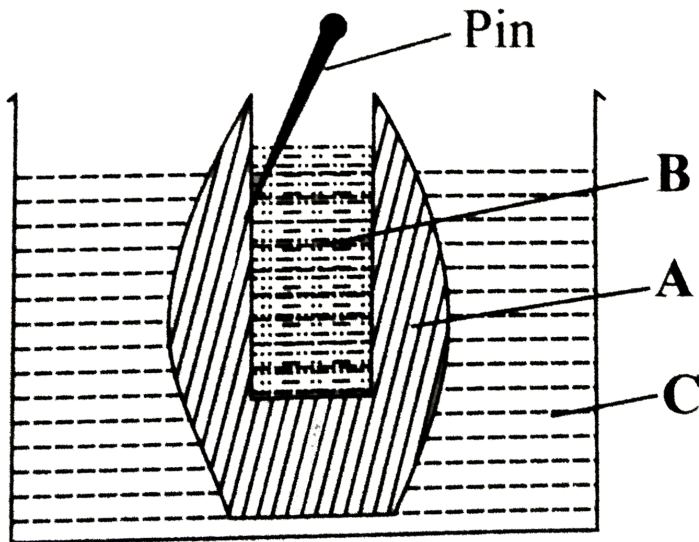
C.  $-20\bar{s}$

D.  $-26^-$

**Answer: A**



25. The given figure shows set up of potato osmoscope experiment. Select the option that correctly identifies the labels *A*, *B* and *C*



- |    |                 |                |                |
|----|-----------------|----------------|----------------|
|    | <i>A</i>        | <i>B</i>       | <i>C</i>       |
| A. | Peeled potato   | Water          | Sugar solution |
|    | <i>A</i>        | <i>B</i>       | <i>C</i>       |
| B. | Peeled potato   | Sugar solution | Water          |
|    | <i>A</i>        | <i>B</i>       | <i>C</i>       |
| C. | Unpeeled potato | Sugar solution | Water          |

	<i>A</i>	<i>B</i>	<i>C</i>
D.	Unpeeled potato	Water	Sugar solution

**Answer: B**



**View Text Solution**

**26.** Which of the following occupies the space between the cell wall and the shrunken protoplast in a plasmolysed cell?

- A. Isotonic solution
- B. Hypotonic solution
- C. Hypertonic solution

D. water

Answer: C



View Text Solution

27. Match column I with column II and select the correct option from the codes given below.

Column I	Column II
----------	-----------

A Hypotonic	No net flow of water
-------------	----------------------

B Hypertonic	(ii) Water moves into the cell
--------------	--------------------------------

C Isotonic	(iii) Water moves out of the cell
------------	-----------------------------------

A.  $A - (ii)$ ,  $B - (iii)$ ,  $C - (i)$

B.  $A - (iii)$ ,  $B - (ii)$ ,  $C - (i)$

C.  $A - (i)$ ,  $B - (ii)$ ,  $C - (iii)$

D.  $A - (ii)$ ,  $B - (i)$ ,  $C - (iii)$

**Answer: A**



**View Text Solution**

**28.** A flowering plant is planted in an earthen pot and irrigated. Urea is added in high amounts to make the plant grow faster but after some time the plant died. This may be due to \_\_\_\_\_

A. exosmosis

B. endosmosis

C. water logging

D. suffocation

**Answer: A**



**View Text Solution**

**29.** The concentration of solute in four cells is  $0.4m$ .

They are placed in four separate containers *I*, *II*, *III* and *IV* filled with saline water of concentrations  $0.1M$ ,  $0.4M$ ,  $2M$  and  $3M$  respectively. In container will the cell swell?

A. *I*

B. *II*

C. *III*

D. *IV*

**Answer: A**



**View Text Solution**

**30.** Use of excessive fertilisers causes wilting due to

A. endomosis

B. exomosis

C. imbibition



D. none of these.

**Answer: B**



**View Text Solution**

**31.** To initiate cell plasmolysis, the salt solution should be

A. Isotonic

B. hypertonic

C. hypotonic

D. none of these.

**Answer: B**



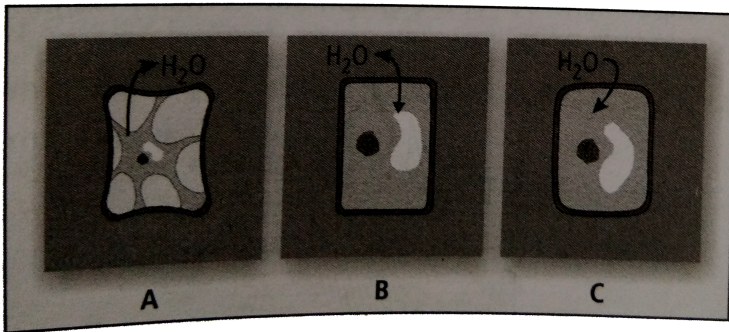
**View Text Solution**

**32.** Salt is added to preserve meat pickles etc.  
because salting kills bacteria by the process of

- A. dissolution
- B. distillation
- C. plasmolysis
- D. imbibition.

**Answer: C**

33. Refer to the given figure and identify cell *A*, *B* and *C*.



- A. *A* – Plasmolysed, *B* – Flaccid, *C* – Turgid
- B. *A* – Flaccid, *B* – Turgid, *C* – Plasmolysed
- C. *A* – Turgid, *B* – Plasmolysed, *C* – Flaccid
- D. *A* – Turgid, *B* – Flaccid, *C* – Plasmolysed

**Answer: A**



**View Text Solution**

**34.** Statement 1: Plant cells do not rupture when placed in distilled water.

Statement 2: Animal cells rupture when placed in distilled water

A. Both statements 1 and 2 are correct.

B. Statement 1 is correct but statement 2 is incorrect.

C. Statement 1 is incorrect but statement 2 is correct.

D. Both statements 1 and 2 are correct.

**Answer: A**



**Watch Video Solution**

**35.** Statement 1: Plasmolysis is bursting of cell membrane when a cell is kept in a hypertonic solution.

Statement 2: Hypertonic solution causes endosmosis.

A. Both statements 1 and 2 are correct.

B. Statement 1 is correct but statement 2 is incorrect.

C. Statement 1 is incorrect but statement 2 is correct.

D. Both statements 1 and 2 are incorrect.

**Answer: D**



**Watch Video Solution**

**36.** A plasmolysed cell can be deplasmolysed by placing it in

A. pure water or hypotonic solution

B. hypertonic solution

C. isotonic solution

D. saturated solution.

**Answer: A**



**Watch Video Solution**

**37.** The restoration of turgidity in a plasmolysed cell when placed in a hypotonic solution is caused by

A. hydration

B. electrolysis

C. plasmolysis

D. deplasmolysis

**Answer: D**



**Watch Video Solution**

**38.** Read the given statements that refer to different stages of plasmolysis. Select the correct option regarding them.

(i) First stage of plasmolysis, when osmotic concentration of cell sap is just equivalent to that of



external solution.

(ii) Protoplast withdraws itself from corners of the cell wall

(iii) Protoplast gets detached from the cell wall and attains a spherical shape.

(I)	(II)	(III)
A. Incipient plasmolysis (I)	Limiting Plasmolysis (II)	Evident Plasmolysis (III)
B. Limiting plasmolysis (I)	Incipient plasmolysis (II)	plasmolysis Evident (III)
C. Limiting plasmolysis (I)	Evident Plasmolysis (II)	Incipient Plasmolysis (III)
D. Evident plasmolysis	Incipient Plasmolysis	Limiting Plasmolysis

**Answer: B**



[Watch Video Solution](#)

**39.** Pressure exerted by cell wall to balance turgor pressure is called

- A. wall pressure
- B. DPD
- C. water potential
- D. osmotic pressure

**Answer: A**



[View Text Solution](#)

**40.** The hydrostatic pressure developed inside the cell on the cell wall due to endosmosis is called

- A. osmotic potential
- B. diffusion pressure
- C. wall pressure
- D. turgor pressure

**Answer: D**



**View Text Solution**

**41.** Absorption of water from soil by seeds increases the \_\_\_\_\_ thus helping seedlings to come out of soil.

A. DPD

B. diffusion pressure

C. imbibition pressure

D. solute potential

**Answer: C**



**View Text Solution**

**42.** Which of the following statements is correct ?

A. Cells shrink in hypertonic solution and swell in hypotonic solution.

B. Imbibition is a special type of diffusion when water is absorbed by non living parts.

C. Most of water flow in the roots occur via the apoplast.

D. all of these.

**Answer: D**



**Watch Video Solution**

**43.** The practice of breaking of rocks during rainy season by inserting wooden pegs in them is based on the phenomenon of

A. imbibition pressure

B. turgor pressure

C. osmosis pressure

D. wall pressure

**Answer: A**



**View Text Solution**

44. Which of the following statements is correct?

- A. Bacteria do not survive in salted pickles because they get plasmolysed in hypertonic medium.
- B. Osmotic potential is numerically equal to the osmotic pressure but is negative in sign.
- C. Kneading of wheat flour is accompanied by release of heat which is due to imbibition
- D. all of these.

**Answer: D**



**Watch Video Solution**

45. Select the incorrect statement regarding imbibition.

A. Imbibition is the phenomenon of adsorption of water or any other liquid without forming solution

B. The liquid which is imbibed is called as imbibate.

C. There occurs a decrease in volume of imbibant during imbibition.



D. water is absorbed by germinating seeds through imbibition.

**Answer: C**



**Watch Video Solution**

**46.** Statement 1: It becomes difficult to open and shut the wooden doors and windows during rainy season.

Statement 2: Wooden doors and windows imbibe water in rainy season and thus their volume is increased.

A. Both statements 1 and 2 are correct.

B. Statement 1 is correct but statement 2 is incorrect.

C. Statement 1 is incorrect but statement 2 is correct.

D. Both statements 1 and 2 are incorrect.

**Answer: A**



**View Text Solution**

**Long Distance Transport Of Water**

1. The most important factor for absorption of water in plants is

- A. living cell
- B. force of capillarity
- C. imbibition
- D. cohesive force of water

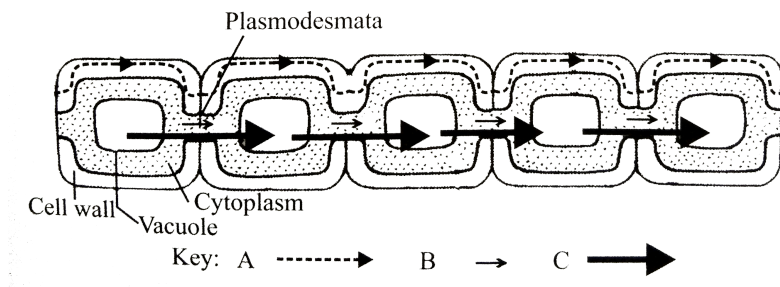
**Answer: A**



**View Text Solution**

2. The given figure shows three different types of pathways of intercellular movement of water in

plants identify *A*, *B* and *C* and select the correct option.



- |    |          |          |          |
|----|----------|----------|----------|
|    | A        | B        | C        |
| A. | Apoplast | Symplast | Vacuolar |
|    | A        | B        | C        |
| B. | Symplast | Apoplast | Vacuolar |
|    | A        | B        | C        |
| C. | Symplast | Vaculor  | Apoplast |
|    | A        | B        | C        |
| D. | Apoplast | Vaculor  | Symplast |

**Answer: A**



**View Text Solution**

3. In apoplast pathway water moves exclusively through the

- A. plasmodesmata
- B. cell walls
- C. intercellular spaces
- D. both (b) and (c).

**Answer: D**



**View Text Solution**

4. In which of the following pathways, movement of water occurs from one cell to another cell through plasmodesmata?

- A. Apoplast pathway
- B. Symplast pathway
- C. Vacuolar pathway
- D. transmembrane pathway

**Answer: B**



**View Text Solution**

5. Following are the differences between apoplast pathway and symplast pathway.

	Apoplast pathway	Symplast pathway
(i)	It consists of non-living parts of plant body, <i>i.e.</i> , cell walls and intercellular spaces.	It consists of living parts of plant body, <i>i.e.</i> , protoplasts connected by plasmodesmata.

(ii)	There is little resistance in the movement of water.	Some resistance occurs in the movement of water through symplast.
(iii)	It is slightly slower.	It is faster.
(iv)	Metabolic state of root directly affects apoplast pathway.	Metabolic state of root does not affect symplast pathway.

A. *(iii) only*

B. *(i) and (iii) only*

C. *(iii) and (iv) only*

D. (ii) and (iii) *only*

**Answer: C**



**View Text Solution**

6. In \_\_\_\_\_ pathway, water crosses atg least two membranes for each cell in its path *i. e.* , plasma membrane on entering and ecxiting).

A. Apoplast

B. symplast

C. transmembrane



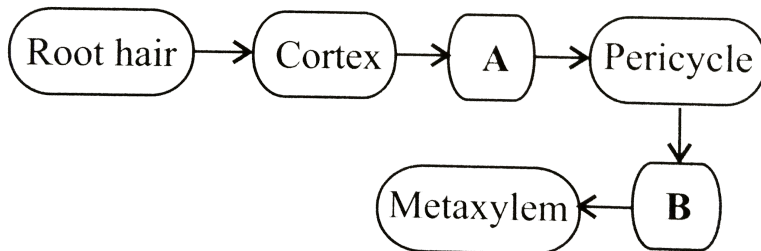
D. both (a) and (c)

**Answer: C**



**View Text Solution**

7. In the given flow chart the flow of water is shown from soil to xylem of the root. Identify the tissues involved in steps *A* and *B*



A. A -Hypodermis , B - protoxylem

B. A - Medullary rays ,B - Phloem

C. A - Endodermis , B - Phloem

D. A - "Endodermis", B -"Protoxylem"

**Answer: D**



**View Text Solution**

**8. Water will move from the root hair through cortex**

**if the water potentials are**

A.	Root hair	Cortex	Xylem
	0	0	0

B.	Root hair	Cortex	Xylem
	- 2	- 1	0

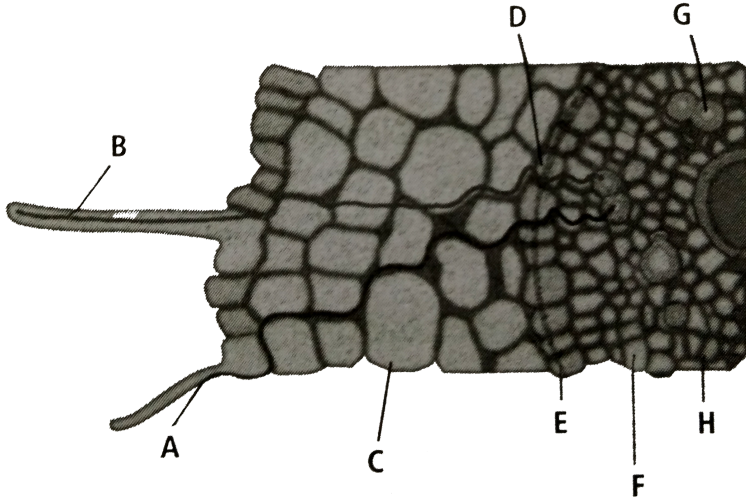
	Root hair	Cortex	Xylem
C.	0	- 1	- 2
	Root hair	Cortex	Xylem
D.	0	+ 1	+ 2

**Answer: C**



**View Text Solution**

**9.** Refer to the given figure Identify the labelled parts ( $A - H$ ) and select the correct option.



A. A-Symplastic path,B-Apoplastic path,C-Cortex,  
 D-Endodermis,E-Casparian strips,F-Pericycle,  
 G-Xylem,H-Phloem

B. A-Apoplastic path ,B-Symplastic path,C-Cortex,  
 D-Endoermis,E-Casparian strips,F-Pericycle,  
 G-Xylem,H-Phloem

C. A-Apoplastic path,B-Symplastic path ,C-Cortex,  
D-Endodermis,E-Casparian strips,F- Pericycle,  
G-Phloem,H-Xylem

D. A-Symplastic path ,B-Apoplastic path ,C-  
Cortex,G-Phloem,H-Xylem

D-Endodermis ,E-Casparian strips ,F-Pericycle,  
G-Phloem,H-Xylem

**Answer: B**



**View Text Solution**

10. In submerged hydrophytes, the absorption of water takes place through

A. root

B. stem

C. leaf

D. general surface of plant.

**Answer: D**



**View Text Solution**

11. If a soft stemmed plant is cut horizontally near the base of its stem with a sharp blade on early morning of a humid day, drops of solution ooze through cut stem. This is due to

- A. guttation
- B. bleeding
- C. transpiration pull
- D. root pressure.

**Answer: D**



**View Text Solution**

12. Loss or excretion of water in the form of liquid droplets from the margins and tips of leaves is called

A. transpiration

B. guttation

C. bleeding

D. precipitation.

**Answer: B**



**View Text Solution**

**Transpiration**



1. Select the option which correctly satisfies the same relationship.

Stomata : Transpiration : : Hydathode : \_\_\_\_\_

A. Guttation

B. Root pressure

C. Bleeding

D. Oozing

**Answer: A**



**View Text Solution**

2. Which of the following statements is incorrect?

A. Endodermis is impervious to water due to the presence of suberised Casparian strips,

B. Xylem vessels and tracheids, being non-living are parts of the apoplast.

C. Ascent of sap is best explained by root pressure theory.

D. none of these.

**Answer: C**



**View Text Solution**

3. Ascent of sap is best explained by

A. mass (bulk) flow

B. pulsation theory

C. root pressure

D. cohesion-tension transpiration pull.

**Answer: D**



**View Text Solution**

4. The transpiration-driven ascent of xylem sap depends mainly upon\_\_\_\_\_ property of water.

A. cohesion

B. adhesion

C. surface tension

D. all of these.

**Answer: D**



**View Text Solution**

5. Loss of water in the form of vapours from the living tissues of aerial plant parts is called

A. transpiration

B. guttation

C. bleeding

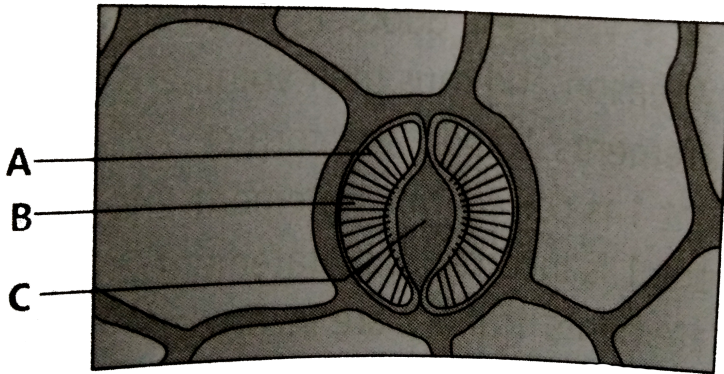
D. precipitation.

**Answer: A**



**View Text Solution**

6. Refer to the given figure



Select the correct statement regarding the labelled parts  $A - C$

A. The inner wall of  $B$  towards  $C$  is thick and elastic.

B. The opening and closing of the stomata is due to change in the turgidity of  $B$

C. The opening of the stoma is aided due to the orientation of  $A$  in the cell walls of  $B$ .

D. all of these.

**Answer: D**



**View Text Solution**

7. Amphistomatic leaf with stomata distributed equally on both the surface is an example of

A. isobilateral leaf

B. dorsiventral leaf

C. xerophytic leaf

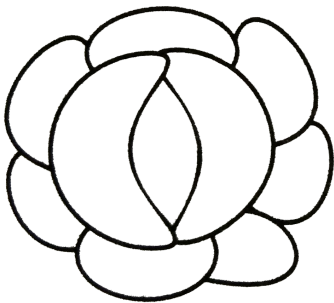
D. hydrophytic leaf.

**Answer: A**

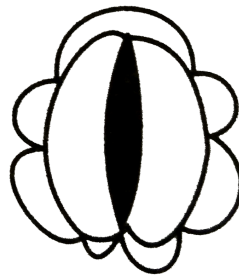


**View Text Solution**

8. The given figure shows two states of a stomata



**(i)**



**(ii)**



In which of the conditions (i) and (ii), guard cells will have higher water content?

A. (i) *only*

B. (ii) *only*

C. Equal in both

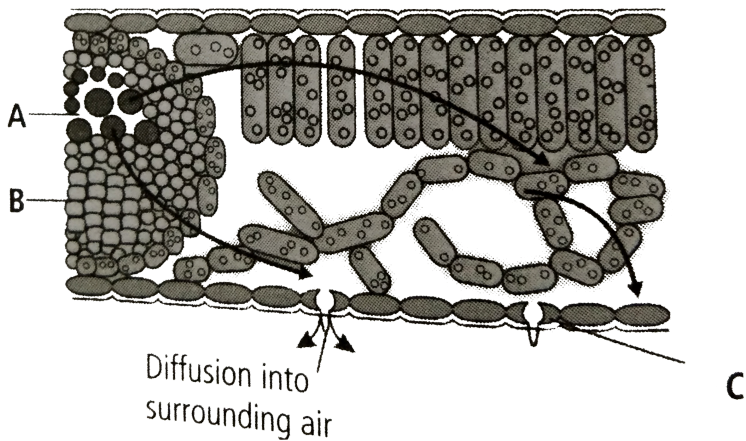
D. No water content in both

**Answer: A**



**View Text Solution**

9. Refer to the given figure and select the option which correctly identifies  $A$ ,  $B$  and  $C$



- |    |          |          |               |
|----|----------|----------|---------------|
|    | <i>A</i> | <i>B</i> | <i>C</i>      |
| A. | Xylem    | Phloem   | Stomatal pore |
|    | <i>A</i> | <i>B</i> | <i>C</i>      |
| B. | Pnloem   | Xylem    | Stomatal pore |
|    | <i>A</i> | <i>B</i> | <i>C</i>      |
| C. | Pnloem   | Xylem    | Guard cell    |
|    | <i>A</i> | <i>B</i> | <i>C</i>      |
| D. | Xylem    | Pnloem   | Guard cell    |

**Answer: D**



**View Text Solution**

**10.** Match column *I* with column *II* and select the correct option from the codes given below.

**Column I**

Dixon and Jolly

Stomata

Manometer

Capillary water

Potometer

**Column II**

(i) Root pressure

(ii) Only water available to plants

(iii) Transpiration

(iv) Transpiration pull

(v) Rate of transpiration

**A.**

$A - (iv), B - (iii), C - (v), D - (ii), E - (i)$

**B.**

$A - (i), B - (iii), C - (iv), D - (ii), E - (v)$

**C.**

$A - (iv), B - (iii), C - (i), D - (ii), E - (v)$

D.

$A - (v), B - (iv), C - (iii), D - (ii), E - (i)$

**Answer: C**



**Watch Video Solution**

11. Water moves up against gravity and even for a tree of 20m height the tip receives water within two hours . The most important physiological phenomenon which is responsible for the upward movement of water is \_\_\_\_\_

A. guttation

B. evaporation

C. transpiration

D. none of these.

**Answer: C**



**View Text Solution**

**12.** The bulliform cells of leaves lose their turgidity during excessive

A. assimilation

B. transpiration

C. photosynthesis

D. respiration.

**Answer: B**



**View Text Solution**

**13.** Match column *I* with column *II* and select the correct option from the codes given below.

**Column I**

- A. Vein ending
- B. Necessary evil
- C. Semi-permeable membrane
- D. Cohesion
- E. Stomata closure

**Column II**

- (i) Transpiration
- (ii) Osmosis
- (iii) Transpiration pull
- (iv) Guttation
- (v) ABA

A.

$$A - (iv), B - (i), C - (iii), D - (ii), E - (v)$$

B.

$$A - (iv), B - (i), C - (ii), D - (iii), E - (v)$$

C.

$$A - (iii), B - (iv), C - (i), D - (ii), E - (iv)$$

D.

$$A - (i), B - (ii), C - (iii), D - (iv), E - (v)$$

**Answer: B**



**View Text Solution**

## Uptake And Transport Of Mineral Nutrients

1. Concetration of miverals in the soil is usually \_\_\_\_\_ than the concentration minerals in the root.

A. lower

B. higher

C. similar

D. none of these.

**Answer: A**



**View Text Solution**



2. Which of the following statements is correct ?

A. Ions are absorbed from the soil by both passive and active transport.

B. Transport proteins of pericycle cells are control points, where a plant adjusts the quantity and types of solutes, that reach the xylem.

C. Root endodermis possesses lignin which actively transport ions in one direction only.

D. Most minerals enter the root by passive transport into the cytoplasm of epidermal cells.

**Answer: A**



**View Text Solution**

3. Which of the following elements are most readily mobilised?

- A. Phosphorus sulphur, nitrogen and potissum
- B. Calcium, sulphur, nitrogen and phosphorus
- C. phosphorus, sulphur,nitrogen and calcium
- D. Potassium, sulphur, nitrogen and calcium

**Answer: A**



## Phloem Transport Flow From Source To Sink

1. Statement 1: Xylem transport is unidirectional.

Statement 2: Phloem transport is bi-directional.

A. Both statements 1 and 2 are correct.

B. Statement 1 is correct but statement 2 is incorrect.

C. Statement 1 is Incorrect but statement 2 is correct.

D. Both statement 1 and 2 are incorrect.

**Answer: A**



**Watch Video Solution**

2. Unidirection flow fo water minerals, some organic nitrogen and hormones occurs through

A. xylem

B. phloem

C. root

D. vascular tissue.

**Answer: A**





[View Text Solution](#)

3. The manufactured food in a green plant moves from the leaves to other parts through

A. xylem

B. phloem

C. cortex

D. pith

**Answer: B**



[View Text Solution](#)

4. Multi-directional flow of a variety of organic and inorganic solutes occurs through

- A. xylem
- B. vascular tissue
- C. phloem
- D. root

**Answer: C**



**View Text Solution**

5. phloem sap is mainly made of

- A. water and sucrose
- B. water and minerals
- C. oligosaccharides and hormones
- D. sucrose only.

**Answer: A**

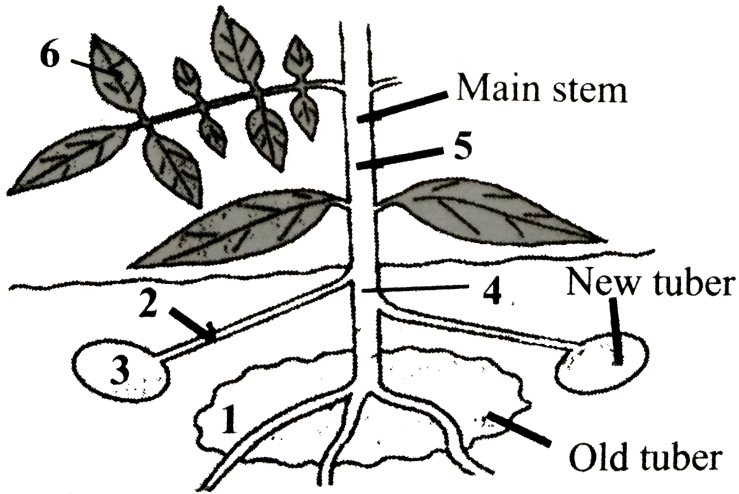


**View Text Solution**

**6.** The given diagram shows a potato plant forming new tubers.

Which route would be taken by most of the food at

this time



A. 1 → 4 → 2 → 3

B. 6 → 5 → 2 → 3

C. 1 → 4 → 5 → 6

D. 6 → 5 → 4 → 1

**Answer: B**



**Watch Video Solution**



7. Mass flow hypothesis was first described by

A. Swanson

B. Buchman

C. Kursanov

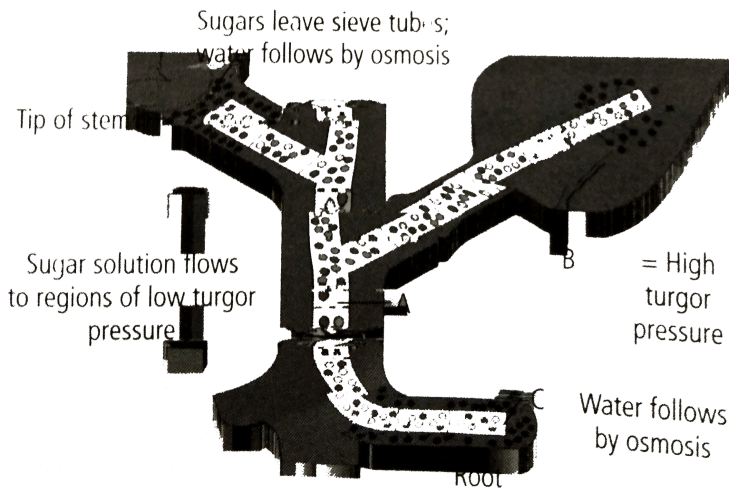
D. Munch.

**Answer: D**



**View Text Solution**

8. Refer to the given figure representing mechanism of translocation and select the option which correctly identifies *A*, *B* and *C*



A. A- phloem ,B- Sugars enter tube , C-`Sugars leave sieve tube

B. A- Xylem , B - Sugars enter tube , C - Sugars leave sieve tube

C. A- Xylem , B- Sugars leave sieve tube , C - Sugars enter sieve tube

D. A- Phloem , B - Sugars leave sieve tube , C - Sugars enter phloem, It can be demonstrated by

**Answer: A**



**Watch Video Solution**

9. Organic substances such as sugars are translocated in the phloem. It can be demonstrated by

A. ringing the stem

B. root pressure

C. grafting

D. defoliation.

**Answer: A**



**View Text Solution**

**10.** A girdled plant (upto bast) may survive for some time but it will eventually die, because

A. water will not move downwards

B. water will not move upwards

C. sugars and other organic materials will not  
move downwards

D. sugars and other organic materials will not  
move upwards.

**Answer: C**



**View Text Solution**

**11. Ringing/girdling experiments demonstrate**

A. phloem is responsible for translocation of food

B. Xylem is responsible for ascent of sap

C. Transpiration pull

D. Both (a) and (b)

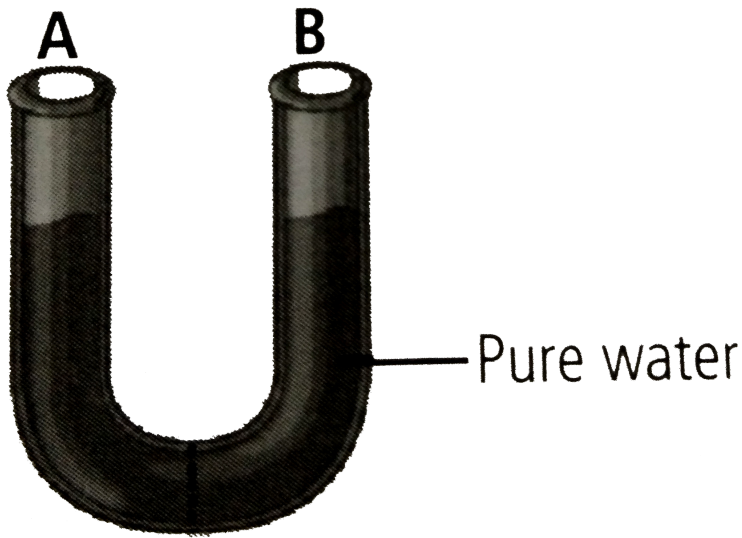
**Answer: D**



**View Text Solution**

## Higher Order Thinking Skills

1. Given figure shows  $U$  – shaped tube with two hands  $A$  and  $B$  separated by a semi-permeable membrane



(i) Adding solute to the right side lowers the value of  $\Psi_s$  causing water to move to the right side of the tube.

(ii) Applying positive pressure to the left side decreases the value of  $\Psi_p$  causing water to move to the right side of the tube.

(iii) Applying negative pressure to the left side decreases the value of  $\Psi_p$  causing water to move to

the right side of the tube.

Which of the above statements is / are true?

- A. (i) and (ii)
- B. (i) only
- C. (iii) only
- D. (i), (ii) and (iii)

**Answer: B**

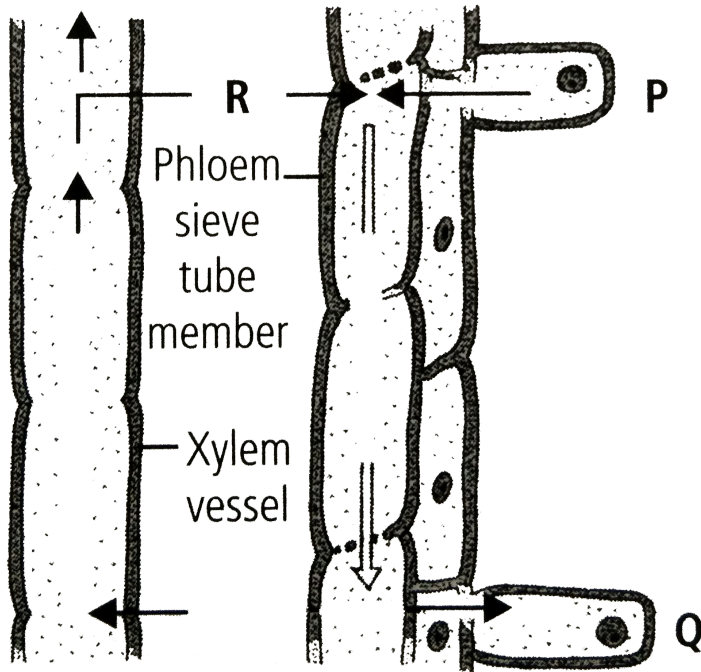


**Watch Video Solution**

2. Given figure demonstrates the translocation of organic solutes according to pressure flow



hypothesis.



Which out of the following statements is incorrect regarding this?

A. A continuous high osmotic concentration is maintained in region *P*, which loads a sieve

tube element by passively transporting solute molecules into it,

B. R shows the movement of  $H_2O$  into sieve tube elements from nearby xylem vessels by osmosis

C. Translocation of organic solutes takes place from region  $P$  with high turgor pressure to region  $Q$  with low turgor pressure

D. In region  $Q$  material is either consumed or is converted into insoluble storage forms resulting in decreased osmotic pressure.

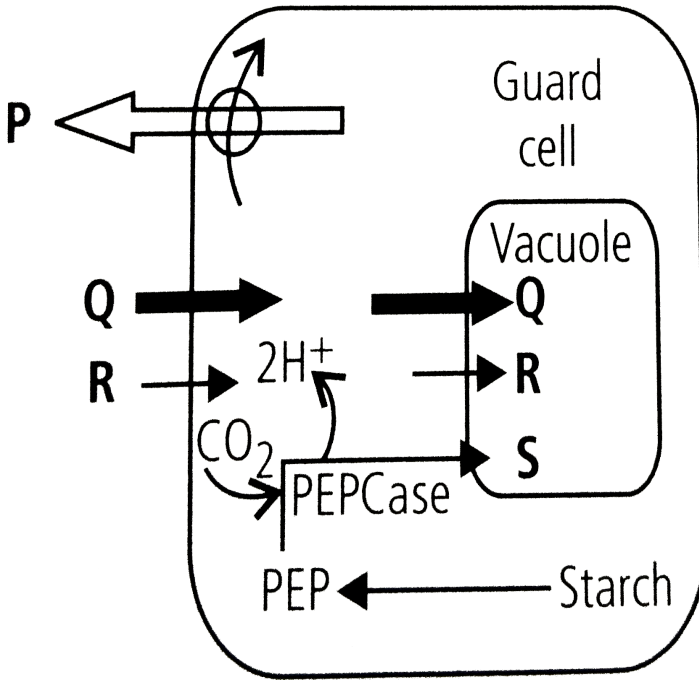
**Answer: A**



[View Text Solution](#)

3. Stomatal opening and closing involves the role of various ions. In the given figure arrows depict the movement of certain ions during stomatal opening in light. Identify the ions ( $P$ ,  $Q$ ,  $R$  and  $S$ ) and

select the correct option.



- A.  $P$   $Q$   $R$   $S$   
 Malate<sup>2-</sup>  $\text{K}^+$   $\text{Cl}^-$   $\text{H}^+$
- B.  $P$   $Q$   $R$   $S$   
 $\text{K}^+$   $\text{H}^+$   $\text{Cl}^-$  Malate<sup>2-</sup>
- C.  $P$   $Q$   $R$   $S$   
 $\text{H}^+$   $\text{K}^+$   $\text{Cl}^-$  Malate<sup>2-</sup>
- D.  $P$   $Q$   $R$   $S$   
 $\text{K}^+$  Malate<sup>2-</sup>  $\text{H}^+$   $\text{Cl}^-$

**Answer: C**



**Watch Video Solution**

4. Stomatal movements are influenced by a number of environmental factors, Which of the following statements is / are incorrect regarding this?

(ii) Blue light keeps stomata open during the day promoting the movement of  $K_+$  ions into guard cells.

(ii) Increased  $CO_2$  concentration reduces the pH of guard cells which promotes conversion of sugar into starch ultimately causing closure of stomata.

(iii) Absciscic acid under stress conditions, causes

rapid movement of  $K^+$  ions into guard cells.

Highly concentrated sucrose or salt solution when applied over to stomata results in stomata opening.

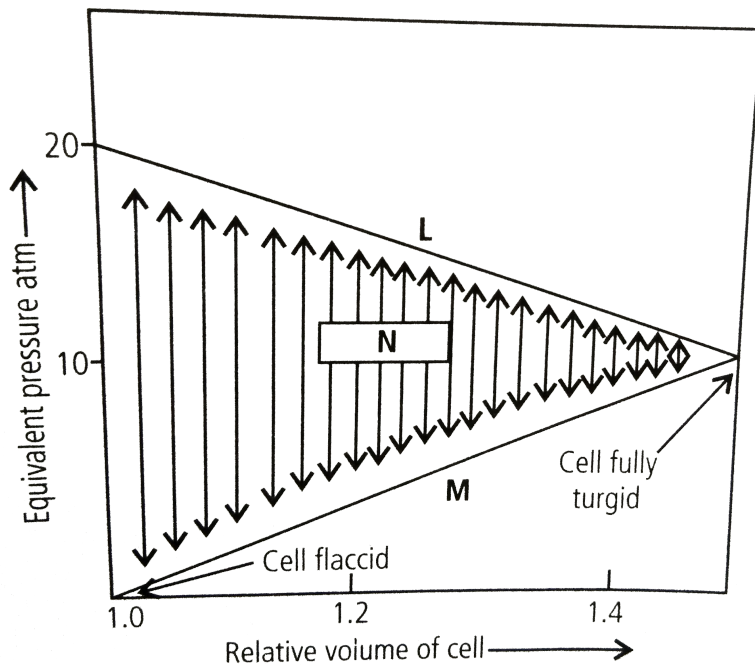
- A. (i) and (ii)
- B. (iii) and (iv)
- C. (iii) only
- D. (iv) only

**Answer: B**



**Watch Video Solution**

5. Given diagram illustrates the changes that occur when a plant cell takes up water. Identify  $L$ ,  $M$  and  $N$  and select the incorrect statement the given diagram



A.  $N$  is the diffusion pressure deficit which becomes zero when  $L$  and  $M$  are equal in

magnitude.

B. In a flaccid cell value of  $N$  becomes equal to that of  $L$

C.  $M$  represents osmotic pressure which increases when a flaccid cell takes up water.

D.  $L$  represents solute potential which decreases with the increase in turgidity of the cell .

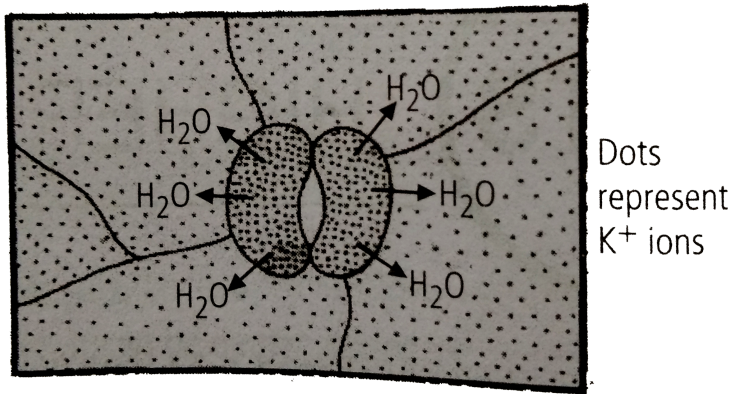
**Answer: C**



**Watch Video Solution**



6. the given diagram illustrates stomata closing the major mistake in the diagram is that



- A. the concentration of the  $K_+$  should be more outside the guard cells
- B. the concentration of the  $K_+$  should be equal on both inside and outside

C. the peripheral walls of the guard cells should be thicker

D. the water should move inside the guard cells.

**Answer: A**



**View Text Solution**

7. On a warm summer day the transpiration pull is the main force that drives from root parenchyma into the root xylem. The table shows values of  $\Psi_p$  (pressure potential ) and  $\Psi_s$  (solute potential) in root xylem and root parenchyma , in kPa. In which of the

options (a-d) would transpiration pull cause water to move from root parenchyma into the root xylem?

Root parenchyma		Root xylem	
A. $\Psi_p$	$\Psi_s$	$\Psi_p$	$\Psi_s$
200	-190	-200	5
Root parenchyma		Root xylem	
B. $\Psi_p$	$\Psi_s$	$\Psi_p$	$\Psi_s$
-200	220	65	-5
Root parenchyma		Root xylem	
C. $\Psi_p$	$\Psi_s$	$\Psi_p$	$\Psi_s$
200	-220	65	-5
Root parenchyma		Root xylem	
D. $\Psi_p$	$\Psi_s$	$\Psi_p$	$\Psi_s$
200	-220	-65	-5

**Answer: D**



**Watch Video Solution**

## Exemplar Problems

1. Which of following statements does not apply to reverse osmosis?

A. It is used for water purification

B. In this technique pressure greater than osmotic pressure is applied to the system

C. It is a passive process.

D. It is an active process.

**Answer: C**



**View Text Solution**

2. Which one of the following will not directly affect transpiration?

A. Temperature

B. Light

C. Wind speed

D. Chlorophyll content of leaves

**Answer: D**



**View Text Solution**

3. The lower surface of leaf will have more number of stomata in a

A. dorsiventral leaf

B. isobilateral leaf

C. both (a) and (b)

D. none of these.

**Answer: A**



**Watch Video Solution**

4. The form of sugar transported through phloem is

A. glucose

B. fructose

C. Sucrose

D. ribose

**Answer: C**



**Watch Video Solution**

**5. The process of guttation takes place**

A. when the root pressure is high and the rate of  
transpiration is low

B. when the root pressure is low and the rate of transpiration is high

C. when the root pressure equals the rate of transpiration

D. when the root pressure as well as rate of transpiration are high.

**Answer: A**



**Watch Video Solution**

**6. Which of the following is an example of imbibition ?**



- A. Uptake of water by root hair
- B. Exchange of gases in stomata
- C. Swelling of seed when put in soil
- D. Opening of stomata

**Answer: C**



**Watch Video Solution**

7. When a plant undergoes senescence, the nutrients may be

- A. accumulated

B. bound to cell wall

C. translocated

D. none of these.

**Answer: C**



**Watch Video Solution**

8. Water potential of pure water at standard temperature is equal to

A. 10

B. 20

C. zero

D. none of these.

**Answer: C**



**Watch Video Solution**

9. Choose the correct option Mycorrhiza is a symbiotic association of fungus with root system which helps in

*A.* absorption of water

*B.* mineral nutrition

*C.* translocation

*D.* gaseous exchange.

A. Only  $A$

B. Only  $B$

C. Both  $A$  and  $B$

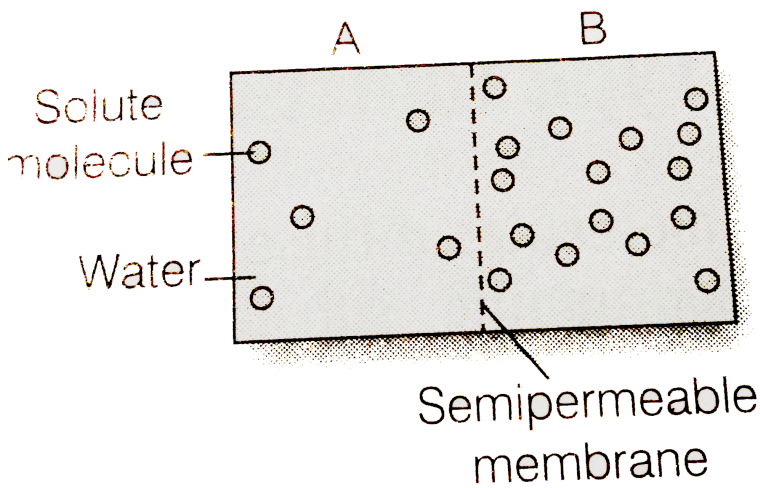
D. Both  $B$  and  $C$

**Answer: C**



**Watch Video Solution**

**10.** Based on the figure given below which of the following statements is not correct ?



A. Movement of solvent molecules will take place from chamber *A* to *B*.

B. Movement of solute will take place from *A* to *B*

C. Presence of a semi-permeable is a prerequisite for this process to occur.

D. the direction and rate of osmosis depends on both the pressure gradient and concentration gradient.

**Answer: B**



**Watch Video Solution**

**11. Match the following and choose the correct option.**

A. Leaves (i) Anti-transpirant

B. Seed (i) transpirant

C. Roots (iii) Negative osmotic potential

D Aspirin (iv) Imbibition

E Plasmolysed cell (v) Absorption

A.

$A - (ii), B - (iv), C - (v), D - (i), E - (iii)$

B.

$A - (iii), B - (ii), C - (iv), D - (i), E - (v)$

C.

$A - (i), B - (ii), C - (iii), D - (iv), E - (v)$

D.

$A - (v), B - (iv), C - (iii), D - (ii), E - (i)$

**Answer: A**



**Watch Video Solution**

**12. Mark the mismatched pair.**

A. Amyloplast - Store protein granule

B. Elaioplast - Store oils or fats

C. Chloroplasts - Contain chlorophyll pigments

D. Chromoplasts - Contain coloured pigments  
other than chlorophyll

**Answer: A**



**Watch Video Solution**



1. Statement 1: the process of diffusion does not require any input of energy.

Statement 2: Diffusion involves movement of particles from a region of higher concentration to a region of lower concentration.

A. Both statements 1 and 2 are correct.

B. Statement 1 is correct but statement 2 is incorrect.

C. Statement 1 is incorrect but statement 2 is correct.

D. Both statements 1 and 2 are incorrect.

**Answer: A**



**Watch Video Solution**

2. Movement of the molecules of solids, gases or liquids from the region of their higher concentration to the region of their lower concentration is known as

A. diffusion

B. osmosis

C. imbibition

D. active transport.

**Answer: A**



**Watch Video Solution**

**3.** The process of diffusion is involved in

A. respiration

B. photosynthesis

C. transpiration

D. all of these.

**Answer: D**



[Watch Video Solution](#)

4. The type of diffusion in which substances move across the membrane along their concentration gradient in the presence of certain carriers or transport proteins is called as

- A. simple diffusion
- B. facilitated diffusion
- C. osmosis
- D. active transport.

**Answer: B**



**Watch Video Solution**

## 5. Facilitated diffusion

- A. needs a carrier protein
- B. is an active process
- C. occurs against the concentration gradient
- D. needs ATP.

**Answer: A**



**Watch Video Solution**

6. Select the incorrect statement regarding facilitated diffusion.

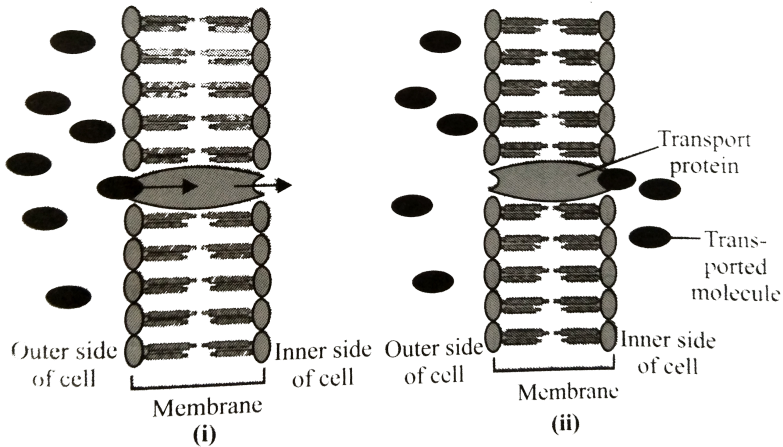
- A. It is a very specific process.
- B. It is a passive process.
- C. It helps the hydrophilic substances to be transported across the membrane.
- D. It is faster than active process.

**Answer: D**



**Watch Video Solution**

7. Refer to the given figure. What does it represent?



A. Simple diffusion

B. Facilitated diffusion

C. Osmosis

D. Active transport.

**Answer: B**



8. When transport proteins simultaneously move two molecules across a membrane in the same direction ,the process is called

A. uniport

B. antiport

C. symport

D. diffusive port.

**Answer: C**



**Watch Video Solution**



9. In passive transport across a membrane, when two protein molecules move in opposite direction it is called as

A. uniport

B. antiport

C. symport

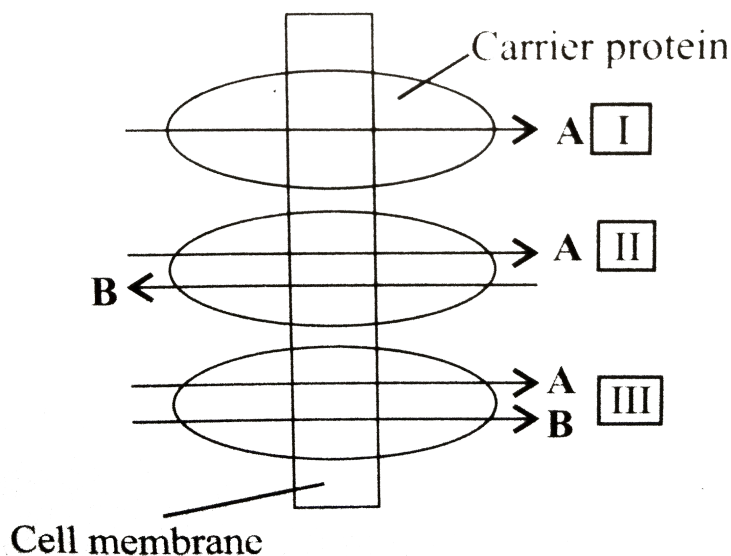
D. co-port.

**Answer: B**



**Watch Video Solution**

10. The given figure shows transport of two molecules *A* and *B* through three different modes of facilitated diffusion. Select the correct option regarding it.



- |    |              |           |            |
|----|--------------|-----------|------------|
|    | <i>I</i>     | <i>II</i> | <i>III</i> |
| A. | (a) Uniport  | Symport   | Antiport   |
|    | <i>I</i>     | <i>II</i> | <i>III</i> |
| B. | (a) Uniport  | Antiport  | Symport    |
|    | <i>I</i>     | <i>II</i> | <i>III</i> |
| C. | (a) Antiport | Uniport   | Symport    |

	<i>I</i>	<i>II</i>	<i>III</i>
D. (a)	Antiport	Symport	Uniport

**Answer: B**



**View Text Solution**

11. Smaller, lipid soluble diffuse faster through cell membrane, but the movement of hydrophilic substances is facilitated by certain transporters which are chemically

A. proteins

B. carbohydrates

C. lipids

D. phospholipids.

**Answer: A**



**Watch Video Solution**

**12.** Which of the following is true about Active transport?

A. uses energy to pump molecules against the concentration gradient

B. is as active process

C. is carried out by membrane proteins

D. all of these.

**Answer: D**



**Watch Video Solution**

**13.** Uphill transport *I. e.* movement of substances from their lower concentration to their higher concentration occurs in

A. simple diffusion

B. facilitated diffusion

C. active transport

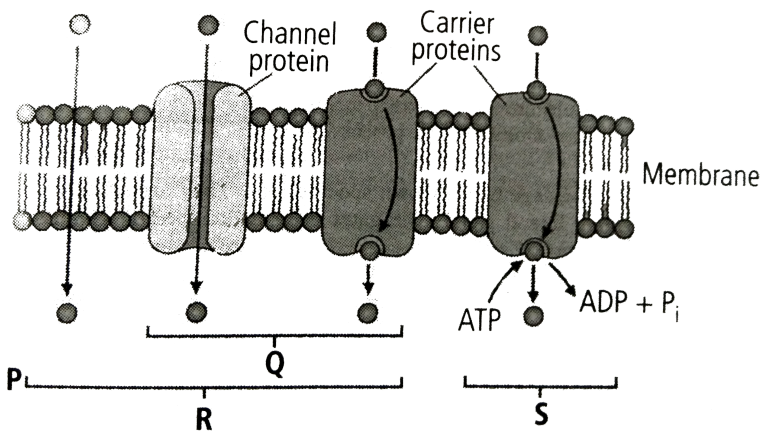
D. both (b) and (c).

Answer: C



View Text Solution

14. Refer to the given figure and identify  $P$ ,  $Q$ ,  $R$  and  $S$ .



A.

<i>P</i>	<i>Q</i>	<i>R</i>	<i>S</i>
Facilitated diffusion	Simple diffusion	Active transport	Passive transport

B.

<i>P</i>	<i>Q</i>	<i>R</i>	<i>S</i>
Simple diffusion	Facilitated diffusion	Passive transport	Active transport

C.

<i>P</i>	<i>Q</i>	<i>R</i>	<i>S</i>
Simple diffusion	Facilitated diffusion	Active transport	Passive transport

D.

<i>P</i>	<i>Q</i>	<i>R</i>	<i>S</i>
Facilitated diffusion	Simple diffusion	Passive transport	Active transport

**Answer: B**



**View Text Solution**

15. Refer to the given table and select the option that correctly fills the blanks in it.

Property	Simple diffusion	Facilitated transport	Active transport
Highly selective	<b>A</b>	Yes	<b>B</b>
Uphill transport	No	<b>C</b>	Yes
Requires ATP	No	<b>D</b>	Yes

- A. *A B C D*  
*No Yes No No*
- B. *A B C D*  
*Yes Yes Yes No*
- C. *A B C D*  
*No No No Yes*
- D. *A B C D*  
*No Yes Yes Yes*

**Answer: A**





[View Text Solution](#)

16. Osmosis is a special kind of diffusion, through which water diffuses across the cell membrane the rate and direction of osmosis depends upon

- A. pressure gradient
- B. concentration gradient
- C. both (*a*) and (*b*)
- D. none of these.

**Answer: C**



[Watch Video Solution](#)

17. The given table shows properties of four cell systems  $A$ ,  $B$ ,  $C$  and  $D$  the maximum rate of inward diffusion of water will be observed in which of these system ?

System	Intracellular concentration of water	Extracellular concentration of water
A	0.09 M	0.11 M
B	0.2 M	0.5 M
C	0.05 M	0.7 M
D	0.03 M	0.6 M

A. System  $A$

B. System  $B$

C. System  $C$

D. System  $D$

**Answer: C**



**Watch Video Solution**

**18.** If some solute is dissolved in pure water, its water potential

A. remains same

B. increases

C. decreases

D. first decreases then increases.

**Answer: C**



**Watch Video Solution**

**19.** Read the following statements and select the correct option.

Statement (i) Pure water has the highest water potential, *i. e.* zero.

Statement (ii) Process of diffusion does not require any input of energy.

Statement (iii) Water moves from the system containing water at higher water potential to the one having lower water potential.

- A. Statements (i) and (ii) are correct.
- B. Statements (ii) and (iii) are correct.
- C. Statements (i) and (iii) are correct.
- D. Statements (i), (ii) and (iii) are correct.

**Answer: D**



**Watch Video Solution**

20. If  $\Psi_{h_w}$  = water potential,  $\Psi_s$  = solute potential,  $\Psi_p$  = pressure potential then select the correct equation showing their inter-relation.

A.  $\Psi_w = \Psi_s - \Psi_\rho$

B.  $\Psi_w = \Psi_s + \Psi_\rho$

C.  $\Psi_s = \Psi_w + \Psi_\rho$

D.  $\Psi_w = \Psi_s = \Psi_\rho$

**Answer: B**



**View Text Solution**

**21. Water potential of a flaccid cell will be**

A.  $\Psi_w = \Psi_s$

B.  $\Psi_s = \Psi_\rho$

C.  $\Psi_w = 0$

D.  $\Psi_w = \Psi_s - \Psi_p$

**Answer: A**



**Watch Video Solution**

**22. Water passes into a cell due to**

A. Op

B. DPD

C. turgor pressure

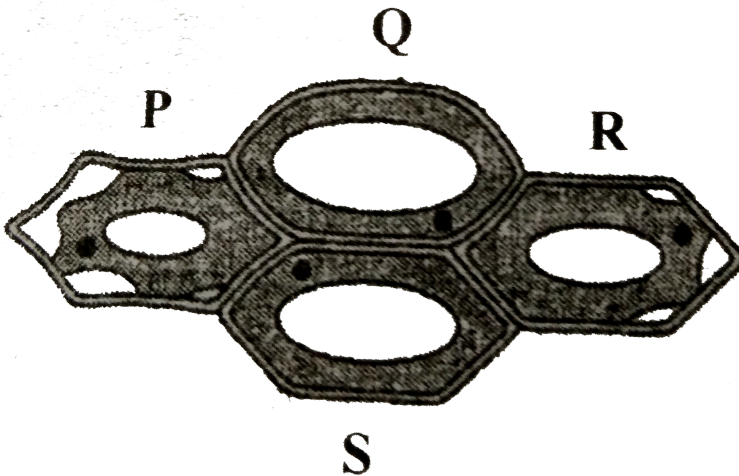
D. diffusion.

Answer: B



Watch Video Solution

23. Which out of the four plant cells ( $P$ ,  $Q$ ,  $R$  and  $S$ ) would not exhibit any wall pressure?



A.  $P$  and  $Q$

B.  $Q$  and  $S$



C.  $P$  and  $R$

D.  $R$  and  $S$

**Answer: C**



**Watch Video Solution**

**24.** In a fully turgid cell

A.  $\Psi_w = \Psi_s + \Psi_\rho$

B.  $\Psi_w = \text{zero}$

C.  $\Psi_w = -\Psi_s - \Psi_\rho$

D.  $\Psi_w = \Psi_s = \Psi_\rho$

**Answer: B**



**Watch Video Solution**

**25. Cell wall of plant cell is**

- A. semi-permeable
- B. selectively permeable
- C. fully permeable
- D. impermeable.

**Answer: C**



**Watch Video Solution**

**26.** Read the given statements and select the correct ones.

A membrane which permits the passage of pure solvent molecules to pass through it and not the solute particles is called semi-permeable.

A membrane which allows some substances to pass through it more readily than other is known as selectively / differentially permeable.

All living biological membranes are perfectly semi-permeable.

A. (a) and (ii)

B. (ii) and (iii)

C. (i) and (iii)

D. (i), (ii) and (iii)

**Answer: A**



**Watch Video Solution**

**27.** Which of the following biological membrane is semi-permeable?

A. Fish and animal bladders

B. Egg membrane

C. Plasma membrane of cell

D. all of these.

**Answer: D**



**Watch Video Solution**

**28.** The plant cell cytoplasm is surrounded by both cell wall and cell membrane. The specificity of transport of substances is mostly across the cell membrane, because

A. cell membrane is impermeable

B. cell membrane is selectively permeable

C. cell membrane is fully permeable

D. cell wall is impermeable

**Answer: B**



**View Text Solution**

**29.** Movement of solvent molecule from a region of its higher concentration to a region of its lower concentration through a semi-permeable membrane is referred to as

A. simple diffusion

B. facilitated diffusion

C. osmosis

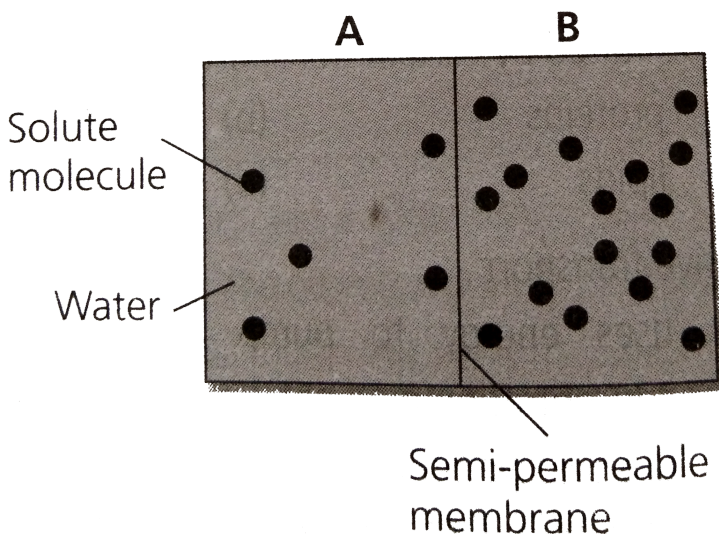
D. active transport.

**Answer: C**



**View Text Solution**

**30.** Refer to the given figure and select the correct statement.



A. Solution of chamber  $B$  has a lower water potential than chamber  $A$ .

B. Solution of chamber  $A$  has lower solute potential than chamber  $B$ .

C. Solution of chamber  $B$  has lower solute potential than chamber  $A$ .

D. Both (a) and (c)

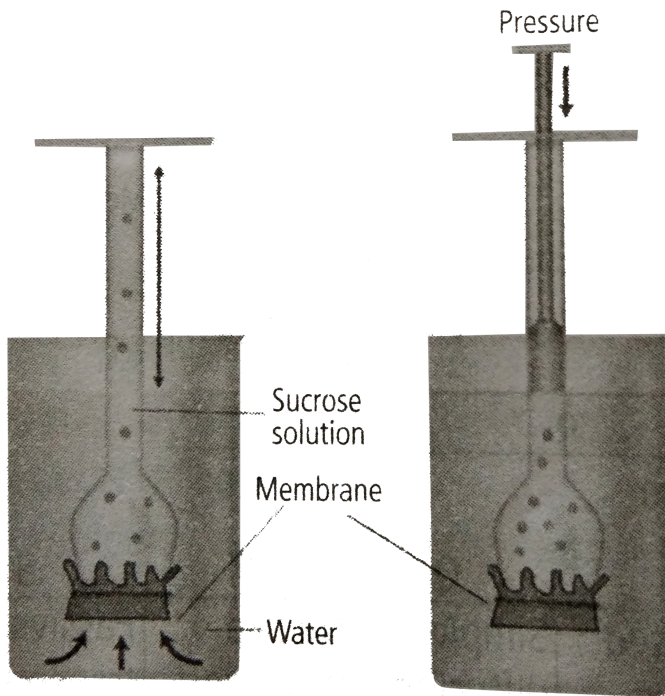
**Answer: D**



**View Text Solution**



31. Refer to the given figure and select the correct option regarding this.



A. Water will diffuse across the membrane to raise the level of solution in the funnel.

B. Pressure can be applied to raise the water movement into the funnel.

C. Sucrose solution is an osmotically active solution which cannot absorb water.

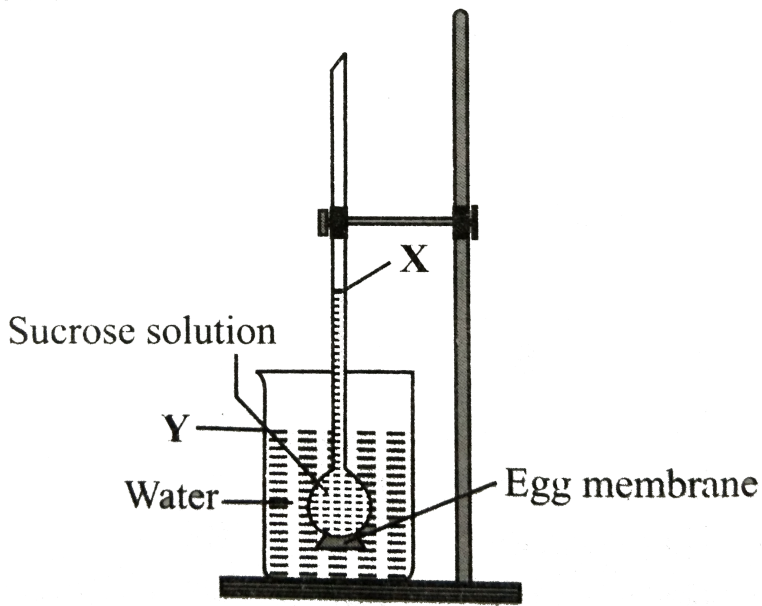
D. all of these.

**Answer: A**



**View Text Solution**

**32.** Given figure represents demonstration of osmosis by egg membrane osmoscope.



After few days which of the following would have occurred?

- A. A rise in level *X* and a drop in level *Y*.
- B. A drop in level *X* and a drop in level *Y*.
- C. A rise in level *X* and a rise in level *Y*.
- D. A drop in level *X* and a rise in level *Y*.

Answer: A



View Text Solution

33. If  $DPD$  represents diffusion pressure deficit,  $OP$  is the osmotic pressure and  $TP$  is the turgor pressure then which of the following equations is coorect?

A.  $DPD = OP = TP$

B.  $DPD = OP + TP$

C.  $DPD = OP - TP$

D.  $DPD = OP$

**Answer: C**



**View Text Solution**

**34.** Water moves from a cell with \_\_\_\_ *DPD* to a cell with \_\_\_\_ *DPD*.

A. higher, lower

B. lower, higher

C. lower, lower

D. higher, higher

**Answer: B**



35. Two adjacent cells  $A$  and  $B$  are being studied.

Cell  $A$  has  $OP$  of 10 atm and  $TP$  of 6 atm. Cell  $B$  has  $OP$  of 10 atm and  $TP$  of 4 atm.

Movement of water will occur from

- A. cell  $A$  to cell  $B$
- B. cell  $B$  to cell  $A$
- C. no movement of water
- D. cannot be determined.

**Answer: A**



36. If a cell  $A$  with  $DPD = 5$  bars is connected to cells  $B$ ,  $C$  and  $D$  whose  $OP$  and  $TP$  are respectively 5 and 5, 10 and 4 and 8 and 3 the flow of water will be

- A.  $C \rightarrow A$ ,  $B$  and  $D$
- B.  $A$  and  $D \rightarrow B$  and  $C$
- C.  $A \rightarrow B$ ,  $C$  and  $D$
- D.  $B \rightarrow A$ ,  $C$  and  $D$

**Answer: D**



37. Which option is true for a fully turgid cell ?

A.  $OP = DPD$

B.  $OP = Zero$

C.  $DPD = Zero$

D.  $TP = zero$

**Answer: C**



**View Text Solution**



**38.** If a cell  $A$  with  $DPD_5$  atm is surrounded by many cells with  $DPD_4$  atm then

A. the net movement of water will be from cell  $A$  to the surrounding cells

B. net movement of water will be from the surrounding cell to cell  $A$

C. water will not move at all

D. water movement will depend on other unknown factors.

**Answer: B**



**39.** The cell  $A$  has an osmotic potential of  $-20$  bars and a pressure potential of  $+6$  bars. What will be its water potential?

A.  $-14\bar{s}$

B.  $+14\bar{s}$

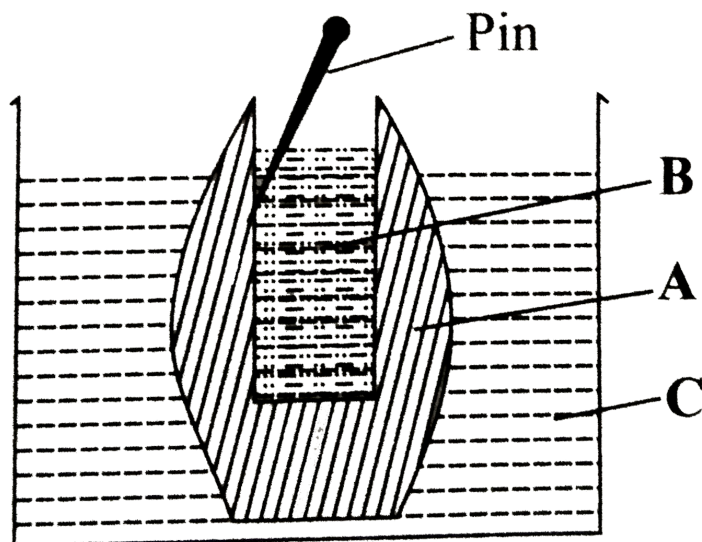
C.  $-20\bar{s}$

D.  $-26^-$

**Answer: A**



40. The given figure shows set up of potato osmoscope experiment. Select the option that correctly identifies the labels *A*, *B* and *C*



- |    |                 |                |                |
|----|-----------------|----------------|----------------|
|    | <i>A</i>        | <i>B</i>       | <i>C</i>       |
| A. | Peeled potato   | Water          | Sugar solution |
|    | <i>A</i>        | <i>B</i>       | <i>C</i>       |
| B. | Peeled potato   | Sugar solution | Water          |
|    | <i>A</i>        | <i>B</i>       | <i>C</i>       |
| C. | Unpeeled potato | Sugar solution | Water          |

	<i>A</i>	<i>B</i>	<i>C</i>
D.	Unpeeled potato	Water	Sugar solution

**Answer: B**



**View Text Solution**

**41.** Which of the following occupies the space between the cell wall and the shrunken protoplast in a plasmolysed cell?

- A. Isotonic solution
- B. Hypotonic solution
- C. Hypertonic solution

D. water

Answer: C



View Text Solution

42. Match column I with column II and select the correct option from the codes given below.

Column I	Column II
----------	-----------

A Hypotonic	No net flow of water
-------------	----------------------

B Hypertonic	(ii) Water moves into the cell
--------------	--------------------------------

C Isotonic	(iii) Water moves out of the cell
------------	-----------------------------------

A.  $A - (ii)$ ,  $B - (iii)$ ,  $C - (i)$

B.  $A - (iii)$ ,  $B - (ii)$ ,  $C - (i)$

C.  $A - (i)$ ,  $B - (ii)$ ,  $C - (iii)$

D.  $A - (ii)$ ,  $B - (i)$ ,  $C - (iii)$

**Answer: A**



**View Text Solution**

**43.** A flowering plant is planted in an earthen pot and irrigated. Urea is added in high amounts to make the plant grow faster but after some time the plant died. This may be due to \_\_\_\_\_

A. exosmosis

B. endosmosis

C. water logging

D. suffocation

**Answer: A**



**View Text Solution**

**44.** The concentration of solute in four cells is  $0.4m$ .

They are placed in four separate containers *I*, *II*, *III* and *IV* filled with saline water of concentrations  $0.1M$ ,  $0.4M$ ,  $2M$  and  $3M$  respectively. In container will the cell swell?

A. *I*

B. *II*

C. *III*

D. *IV*

**Answer: A**



**View Text Solution**

**45.** Use of excessive fertilisers causes wilting due to

A. endomosis

B. exomosis

C. imbibition



D. none of these.

**Answer: B**



**View Text Solution**

**46.** To initiate cell plasmolysis, the salt solution should be

A. Isotonic

B. hypertonic

C. hypotonic

D. none of these.

**Answer: B**



**View Text Solution**

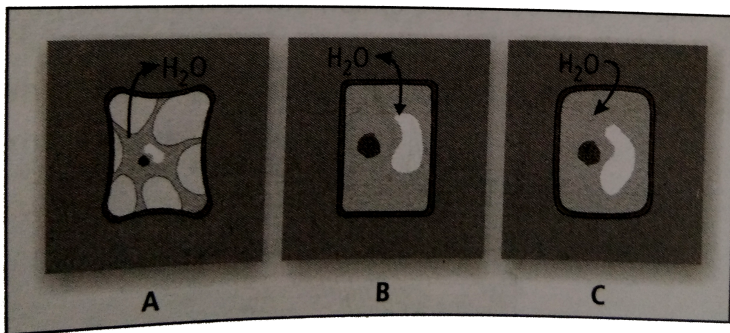
47. Salt is added to preserve meat pickles etc. because salting kills bacteria by the process of

- A. dissolution
- B. distillation
- C. plasmolysis
- D. imbibition.

**Answer: C**



48. Refer to the given figure and identify cell *A*, *B* and *C*.



A. *A* – Plasmolysed, *B* – Flaccid, *C* – Turgid

B. *A* – Flaccid, *B* – Turgid, *C* – Plasmolysed

C. *A* – Turgid, *B* – Plasmolysed, *C* – Flaccid

D. *A* – Turgid, *B* – Flaccid, *C* – Plasmolysed

**Answer: A**



**View Text Solution**

**49.** Statement 1: Plant cells do not rupture when placed in distilled water.

Statement 2: Animal cells rupture when placed in distilled water

A. Both statements 1 and 2 are correct.

B. Statement 1 is correct but statement 2 is incorrect.

C. Statement 1 is incorrect but statement 2 is correct.

D. Both statements 1 and 2 are correct.

**Answer: A**



**Watch Video Solution**

**50.** Statement 1: Plasmolysis is bursting of cell membrane when a cell is kept in a hypertonic solution.

Statement 2: Hypertonic solution causes endosmosis.

A. Both statements 1 and 2 are correct.

B. Statement 1 is correct but statement 2 is incorrect.

C. Statement 1 is incorrect but statement 2 is correct.

D. Both statements 1 and 2 are incorrect.

**Answer: D**



**Watch Video Solution**

**51.** A plasmolysed cell can be deplasmolysed by placing it in

A. pure water or hypotonic solution

B. hypertonic solution

C. isotonic solution

D. saturated solution.

**Answer: A**



**Watch Video Solution**

**52.** The restoration of turgidity in a plasmolysed cell when placed in a hypotonic solution is caused by

A. hydration

B. electrolysis

C. plasmolysis

D. deplasmolysis

**Answer: D**



**Watch Video Solution**

**53.** Read the given statements that refer to different stages of plasmolysis. Select the correct option regarding them.

(i) First stage of plasmolysis, when osmotic concentration of cell sap is just equivalent to that of



external solution.

(ii) Protoplast withdraws itself from corners of the cell wall

(iii) Protoplast gets detached from the cell wall and attains a spherical shape.

(I)	(II)	(III)
A. Incipient plasmolysis (I)	Limiting Plasmolysis (II)	Evident Plasmolysis (III)
B. Limiting plasmolysis (I)	Incipient plasmolysis (II)	plasmolysis Evident (III)
C. Limiting plasmolysis (I)	Evident Plasmolysis (II)	Incipient Plasmolysis (III)
D. Evident plasmolysis	Incipient Plasmolysis	Limiting Plasmolysis

**Answer: B**



[Watch Video Solution](#)

**54.** Pressure exerted by cell wall to balance turgor pressure is called

- A. wall pressure
- B. DPD
- C. water potential
- D. osmotic pressure

**Answer: A**



[View Text Solution](#)

55. The hydrostatic pressure developed inside the cell on the cell wall due to endosmosis is called

A. osmotic potential

B. diffusion pressure

C. wall pressure

D. turgor pressure

**Answer: D**



**View Text Solution**

**56.** Absorption of water from soil by seeds increases the \_\_\_\_\_ thus helping seedlings to come out of soil.

A. DPD

B. diffusion pressure

C. imbibition pressure

D. solute potential

**Answer: C**



**View Text Solution**

57. Which of the following statements is correct ?

A. Cells shrink in hypertonic solution and swell in hypotonic solution.

B. Imbibition is a special type of diffusion when water is absorbed by non living parts.

C. Most of water flow in the roots occur via the apoplast.

D. all of these.

**Answer: D**



**Watch Video Solution**

**58.** The practice of breaking of rocks during rainy season by inserting wooden pegs in them is based on the phenomenon of

A. imbibition pressure

B. turgor pressure

C. osmosis pressure

D. wall pressure

**Answer: A**



**View Text Solution**

**59.** Which of the following statements is correct?

- A. Bacteria do not survive in salted pickles because they get plasmolysed in hypertonic medium.
- B. Osmotic potential is numerically equal to the osmotic pressure but is negative in sign.
- C. Kneading of wheat flour is accompanied by release of heat which is due to imbibition
- D. all of these.

**Answer: D**



**Watch Video Solution**

**60.** Select the incorrect statement regarding imbibition.

A. Imbibition is the phenomenon of adsorption of water or any other liquid without forming solution

B. The liquid which is imbibed is called as imbibate.

C. There occurs a decrease in volume of imbibant during imbibition.



D. water is absorbed by germinating seeds through imbibition.

**Answer: C**



**Watch Video Solution**

**61.** Statement 1: It becomes difficult to open and shut the wooden doors and windows during rainy season.  
Statement 2: Wooden doors and windows imbibe water in rainy season and thus their volume is increased.

A. Both statements 1 and 2 are correct.

B. Statement 1 is correct but statement 2 is incorrect.

C. Statement 1 is incorrect but statement 2 is correct.

D. Both statements 1 and 2 are incorrect.

**Answer: A**



**View Text Solution**

**62.** The most important factor for absorption of water in plants is

A. living cell

B. force of capillarity

C. imbibition

D. cohesive force of water

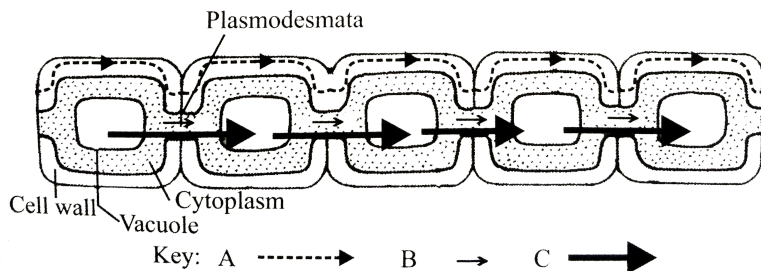
**Answer: A**



**View Text Solution**

**63.** The given figure shows three different types of pathways of intercellular movement of water in plants identify *A*, *B* and *C* and select the correct

option.



- |    | A        | B        | C        |
|----|----------|----------|----------|
| A. | Apoplast | Symplast | Vacuolar |
| B. | Symplast | Apoplast | Vacuolar |
| C. | Symplast | Vaculor  | Apoplast |
| D. | Apoplast | Vaculor  | Symplast |

**Answer: A**



**View Text Solution**

**64.** In apoplast pathway water moves exclusively through the

- A. plasmodesmata
- B. cell walls
- C. intercellular spaces
- D. both (b) and (c).

**Answer: D**



**View Text Solution**

**65.** In which of the following pathways, movement of water occurs from one cell to another cell through plasmodesmata?

- A. Apoplast pathway
- B. Symplast pathway
- C. Vacuolar pathway
- D. transmembrane pathway

**Answer: B**



**View Text Solution**

**66.** Following are the differences between apoplast pathway and symplast pathway.

	<b>Apoplast pathway</b>	<b>Symplast pathway</b>
(i)	It consists of non-living parts of plant body, <i>i.e.</i> , cell walls and intercellular spaces.	It consists of living parts of plant body, <i>i.e.</i> , protoplasts connected by plasmodesmata.

(ii)	There is little resistance in the movement of water.	Some resistance occurs in the movement of water through symplast.
(iii)	It is slightly slower.	It is faster.
(iv)	Metabolic state of root directly affects apoplast pathway.	Metabolic state of root does not affect symplast pathway.

A. *(iii) only*

B. *(i) and (iii) only*

C. *(iii) and (iv) only*

D. (ii) and (iii) *only*

**Answer: C**



**View Text Solution**

**67.** In \_\_\_\_\_ pathway, water crosses at least two membranes for each cell in its path *i. e.* , plasma membrane on entering and exiting).

A. Apoplast

B. symplast

C. transmembrane



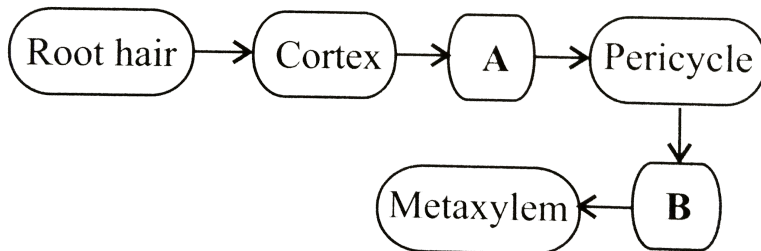
D. both (a) and (c)

**Answer: C**



**View Text Solution**

**68.** In the given flow chart the flow of water is shown from soil to xylem of the root. Identify the tissues involved in steps *A* and *B*



A. A -Hypodermis , B - protoxylem

B. A - Medullary rays ,B - Phloem

C. A - Endodermis , B - Phloem

D. A - "Endodermis", B -"Protoxylem"

**Answer: D**



**View Text Solution**

**69.** Water will move from the root hair through cortex if the water potentials are

A.	Root hair	Cortex	Xylem
	0	0	0

B.	Root hair	Cortex	Xylem
	- 2	- 1	0

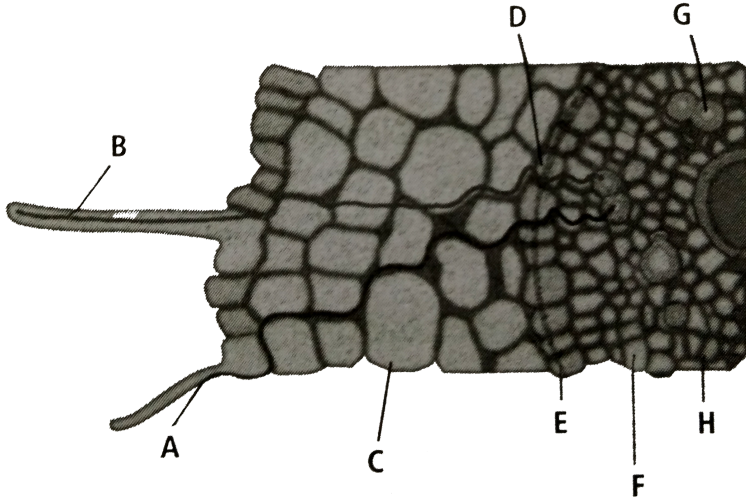
	Root hair	Cortex	Xylem
C.	0	- 1	- 2
	Root hair	Cortex	Xylem
D.	0	+ 1	+ 2

**Answer: C**



**View Text Solution**

**70.** Refer to the given figure Identify the labelled parts ( $A - H$ ) and select the correct option.



A. A-Symplastic path,B-Apoplastic path,C-Cortex,  
 D-Endodermis,E-Casparian strips,F-Pericycle,  
 G-Xylem,H-Phloem

B. A-Apoplastic path ,B-Symplastic path,C-Cortex,  
 D-Endoermis,E-Casparian strips,F-Pericycle,  
 G-Xylem,H-Phloem

C. A-Apoplastic path,B-Symplastic path ,C-Cortex,

D-Endodermis,E-Casparian strips,F- Pericycle,

G-Phloem,H-Xylem

D. A-Symplastic path ,B-Apoplastic path ,C-

Cortex,G-Phloem,H-Xylem

D-Endodermis ,E-Casparian strips ,F-Pericycle,

G-Phloem,H-Xylem

**Answer: B**



**View Text Solution**

71. In submerged hydrophytes, the absorption of water takes place through

A. root

B. stem

C. leaf

D. general surface of plant.

**Answer: D**



**View Text Solution**

**72.** If a soft stemmed plant is cut horizontally near the base of its stem with a sharp blade on early morning of a humid day, drops of solution ooze through cut stem. This is due to

- A. guttation
- B. bleeding
- C. transpiration pull
- D. root pressure.

**Answer: D**



**View Text Solution**

**73.** Loss or excretion of water in the form of liquid droplets from the margins and tips of leaves is called

A. transpiration

B. guttation

C. bleeding

D. precipitation.

**Answer: B**



**View Text Solution**



**74.** Select the option which correctly satisfies the same relationship.

Stomata : Transpiration : : Hydathode : \_\_\_\_\_

- A. Guttation
- B. Root pressure
- C. Bleeding
- D. Oozing

**Answer: A**



**View Text Solution**

**75.** Which of the following statements is incorrect?

- A. Endodermis is impervious to water due to the presence of suberised Casparian strips,
- B. Xylem vessels and tracheids, being non-living are parts of the apoplast.
- C. Ascent of sap is best explained by root pressure theory.
- D. none of these.

**Answer: C**



**View Text Solution**

**76.** Ascent of sap is best explained by

- A. mass (bulk) flow
- B. pulsation theory
- C. root pressure
- D. cohesion-tension transpiration pull.

**Answer: D**



**View Text Solution**

77. The transpiration-driven ascent of xylem sap depends mainly upon\_\_\_\_\_ property of water.

- A. cohesion
- B. adhesion
- C. surface tension
- D. all of these.

**Answer: D**



**View Text Solution**

**78.** Loss of water in the form of vapours from the living tissues of aerial plant parts is called

A. transpiration

B. guttation

C. bleeding

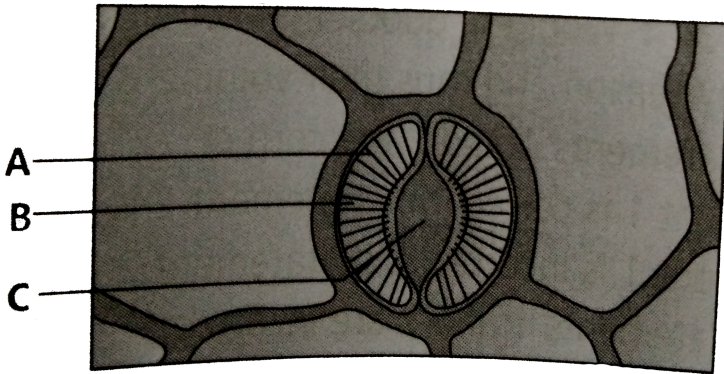
D. precipitation.

**Answer: A**



**View Text Solution**

79. Refer to the given figure



Select the correct statement regarding the labelled parts  $A - C$

- A. The inner wall of  $B$  towards  $C$  is thick and elastic.
- B. The opening and closing of the stomata is due to change in the turgidity of  $B$

- C. The opening of the stoma is aided due to the orientation of  $A$  in the cell walls of  $B$ .
- D. all of these.

**Answer: D**



**View Text Solution**

**80.** Amphistomatic leaf with stomata distributed equally on both the surface is an example of

- A. isobilateral leaf
- B. dorsiventral leaf

C. xerophytic leaf

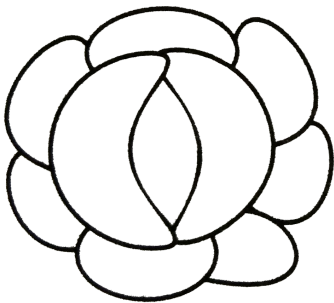
D. hydrophytic leaf.

**Answer: A**

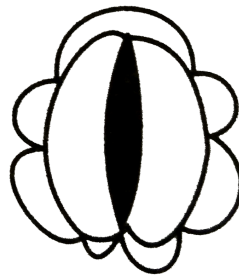


**View Text Solution**

**81.** The given figure shows two states of a stomata



**(i)**



**(ii)**



In which of the conditions (i) and (ii), guard cells will have higher water content?

A. (i) *only*

B. (ii) *only*

C. Equal in both

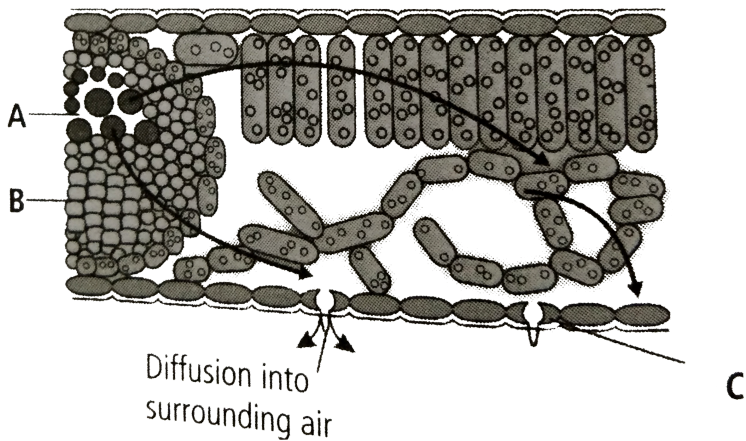
D. No water content in both

**Answer: A**



**View Text Solution**

**82.** Refer to the given figure and select the option which correctly identifies *A*, *B* and *C*



- |    |          |          |               |
|----|----------|----------|---------------|
|    | <i>A</i> | <i>B</i> | <i>C</i>      |
| A. | Xylem    | Phloem   | Stomatal pore |
|    | <i>A</i> | <i>B</i> | <i>C</i>      |
| B. | Pnloem   | Xylem    | Stomatal pore |
|    | <i>A</i> | <i>B</i> | <i>C</i>      |
| C. | Pnloem   | Xylem    | Guard cell    |
|    | <i>A</i> | <i>B</i> | <i>C</i>      |
| D. | Xylem    | Pnloem   | Guard cell    |

**Answer: D**



**View Text Solution**

**83.** Match column *I* with column *II* and select the correct option from the codes given below.

**Column I**

Dixon and Jolly

Stomata

Manometer

Capillary water

Potometer

**Column II**

(i) Root pressure

(ii) Only water available to plants

(iii) Transpiration

(iv) Transpiration pull

(v) Rate of transpiration

**A.**

$A - (iv), B - (iii), C - (v), D - (ii), E - (i)$

**B.**

$A - (i), B - (iii), C - (iv), D - (ii), E - (v)$

**C.**

$A - (iv), B - (iii), C - (i), D - (ii), E - (v)$

D.

$A - (v), B - (iv), C - (iii), D - (ii), E - (i)$

**Answer: C**



**Watch Video Solution**

**84.** Water moves up against gravity and even for a tree of  $20m$  height the tip receives water within two hours . The most important physiological phenomenon which is responsible for the upward movement of water is \_\_\_\_\_

A. guttation

B. evaporation

C. transpiration

D. none of these.

**Answer: C**



**View Text Solution**

**85.** The bulliform cells of leaves lose their turgidity during excessive

A. assimilation

B. transpiration

C. photosynthesis

D. respiration.

**Answer: B**



**View Text Solution**

**86.** Match column *I* with column *II* and select the correct option from the codes given below.

**Column I**

- A. Vein ending
- B. Necessary evil
- C. Semi-permeable membrane
- D. Cohesion
- E. Stomata closure

**Column II**

- (i) Transpiration
- (ii) Osmosis
- (iii) Transpiration pull
- (iv) Guttation
- (v) ABA

A.

$$A - (iv), B - (i), C - (iii), D - (ii), E - (v)$$

B.

$$A - (iv), B - (i), C - (ii), D - (iii), E - (v)$$

C.

$$A - (iii), B - (iv), C - (i), D - (ii), E - (iv)$$

D.

$$A - (i), B - (ii), C - (iii), D - (iv), E - (v)$$

**Answer: B**



**View Text Solution**

87. Concetration of miverals in the soil is usually \_\_\_\_\_ than the concentration minerals in the root.

A. lower

B. higher

C. similar

D. none of these.

**Answer: A**



**View Text Solution**

88. Which of the following statements is correct ?



A. Ions are absorbed from the soil by both passive and active transport.

B. Transport proteins of pericycle cells are control points, where a plant adjusts the quantity and types of solutes, that reach the xylem.

C. Root endodermis possesses lignin which actively transport ions in one direction only.

D. Most minerals enter the root by passive transport into the cytoplasm of epidermal cells.

**Answer: A**



[View Text Solution](#)

**89.** Which of the following elements are most readily mobilised?

- A. Phosphorus sulphur, nitrogen and potassium
- B. Calcium, sulphur, nitrogen and phosphorus
- C. phosphorus, sulphur, nitrogen and calcium
- D. Potassium, sulphur, nitrogen and calcium

**Answer: A**



[View Text Solution](#)

**90.** Statement 1: Xylem transport is unidirectional.

Statement 2: Phloem transport is bi-directional.

A. Both statements 1 and 2 are correct.

B. Statement 1 is correct but statement 2 is incorrect.

C. Statement 1 is Incorrect but statement 2 is correct.

D. Both statement 1 and 2 are incorrect.

**Answer: A**



**Watch Video Solution**

**91.** Unidirection flow fo water minerals, some organic nitrogen and hormones occurs through

A. xylem

B. phloem

C. root

D. vascular tissue.

**Answer: A**



**View Text Solution**

**92.** The manufactured food in a green plant moves from the leaves to other parts through

A. xylem

B. phloem

C. cortex

D. pith

**Answer: B**



**View Text Solution**

**93.** Multi-directional flow of a variety of organic and inorganic solutes occurs through

- A. xylem
- B. vascular tissue
- C. phloem
- D. root

**Answer: C**



**View Text Solution**

**94.** phloem sap is mainly made of

- A. water and sucrose
- B. water and minerals
- C. oligosaccharides and hormones
- D. sucrose only.

**Answer: A**

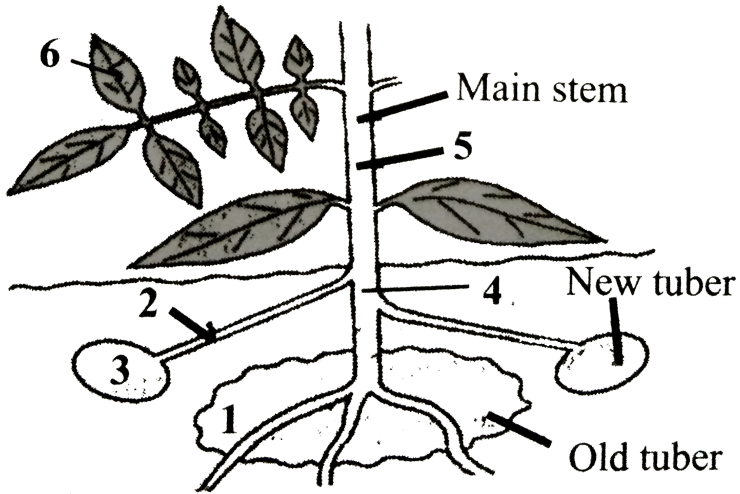


**View Text Solution**

**95.** The given diagram shows a potato plant forming new tubers.

Which route would be taken by most of the food at

this time



A.  $1 \rightarrow 4 \rightarrow 2 \rightarrow 3$

B.  $6 \rightarrow 5 \rightarrow 2 \rightarrow 3$

C.  $1 \rightarrow 4 \rightarrow 5 \rightarrow 6$

D.  $6 \rightarrow 5 \rightarrow 4 \rightarrow 1$

**Answer: B**



**Watch Video Solution**



96. Mass flow hypothesis was first described by

A. Swanson

B. Buchman

C. Kursanov

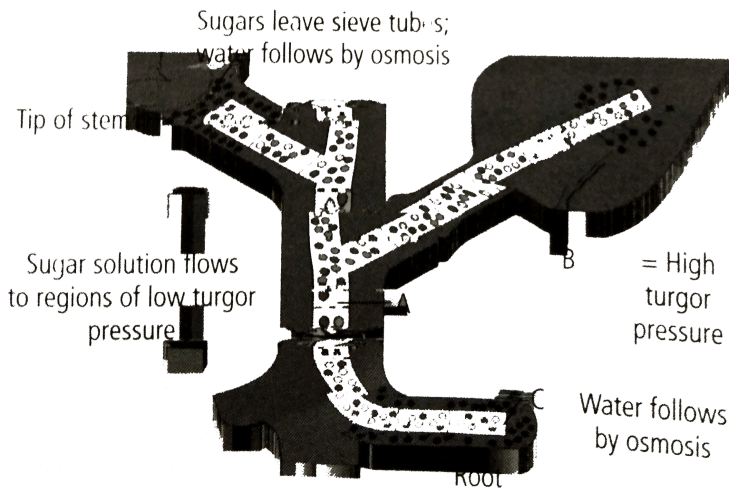
D. Munch.

**Answer: D**



**View Text Solution**

97. Refer to the given figure representing mechanism of translocation and select the option which correctly identifies *A*, *B* and *C*



A. A- phloem ,B- Sugars enter tube , C- Sugars leave sieve tube

B. A- Xylem , B - Sugars enter tube , C - Sugars leave sieve tube

C. A- Xylem , B- Sugars leave sieve tube , C - Sugars enter sieve tube

D. A- Phloem , B - Sugars leave sieve tube , C - Sugars enter phloem, It can be demonstrated by

**Answer: A**



**Watch Video Solution**

**98.** Organic substances such as sugars are translocated in the phloem. It can be demonstrated by

A. ringing the stem

B. root pressure

C. grafting

D. defoliation.

**Answer: A**



**View Text Solution**

**99.** A girdled plant (upto bast) may survive for some time but it will eventually die, because

A. water will not move downwards

B. water will not move upwards

C. sugars and other organic materials will not  
move downwards

D. sugars and other organic materials will not  
move upwards.

**Answer: C**



**View Text Solution**

**100.** Ringing/girdling experiments demonstrate

A. phloem is responsible for translocation of food

B. Xylem is responsible for ascent of sap

C. Transpiration pull

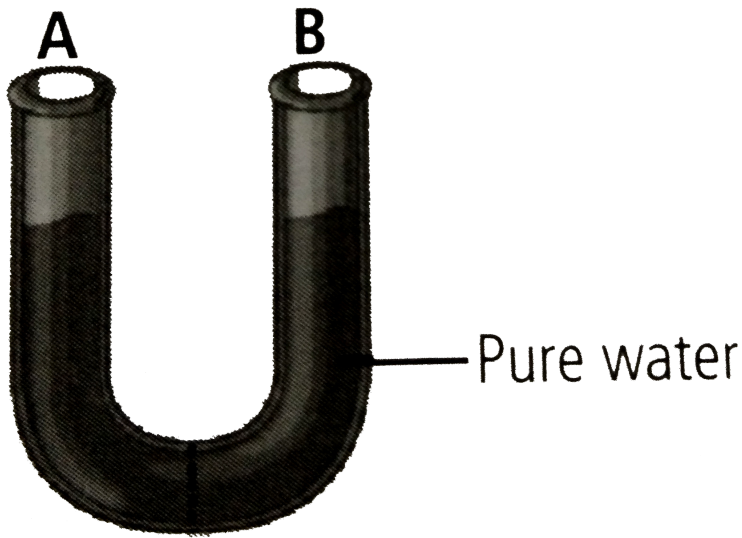
D. Both (a) and (b)

**Answer: D**



**View Text Solution**

**101.** Given figure shows  $U$  – shaped tube with two hands  $A$  and  $B$  separated by a semi-permeable membrane



(i) Adding solute to the right side lowers the value of  $\Psi_s$  causing water to move to the right side of the tube.

(ii) Applying positive pressure to the left side decreases the value of  $\Psi_p$  causing water to move to the right side of the tube.

(iii) Applying negative pressure to the left side decreases the value of  $\Psi_p$  causing water to move to

the right side of the tube.

Which of the above statements is / are true?

- A. (i) and (ii)
- B. (i) only
- C. (iii) only
- D. (i), (ii) and (iii)

**Answer: B**

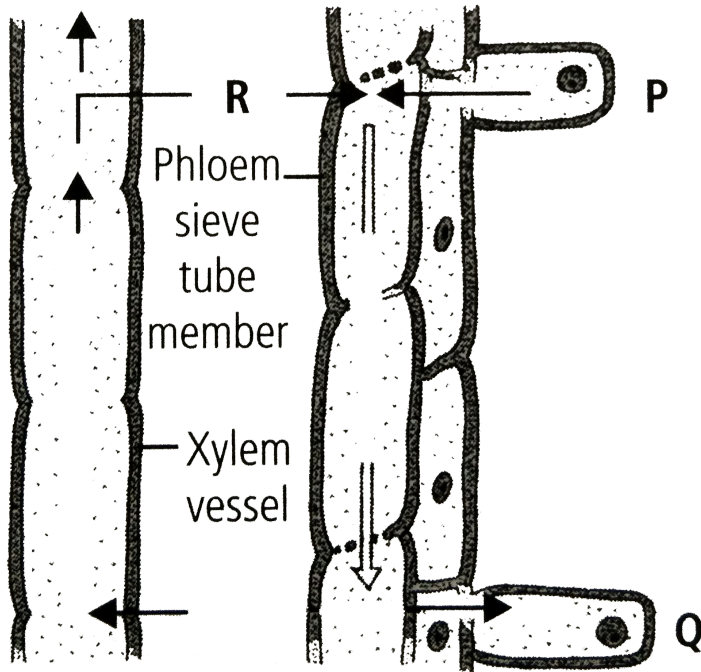


**Watch Video Solution**

**102.** Given figure demonstrates the translocation of organic solutes according to pressure flow



hypothesis.



Which out of the following statements is incorrect regarding this?

A. A continuous high osmotic concentration is maintained in region *P*, which loads a sieve

tube element by passively transporting solute molecules into it,

B. R shows the movement of  $H_2O$  into sieve tube elements from nearby xylem vessels by osmosis

C. Translocation of organic solutes takes place from region  $P$  with high turgor pressure to region  $Q$  with low turgor pressure

D. In region  $Q$  material is either consumed or is converted into insoluble storage forms resulting in decreased osmotic pressure.

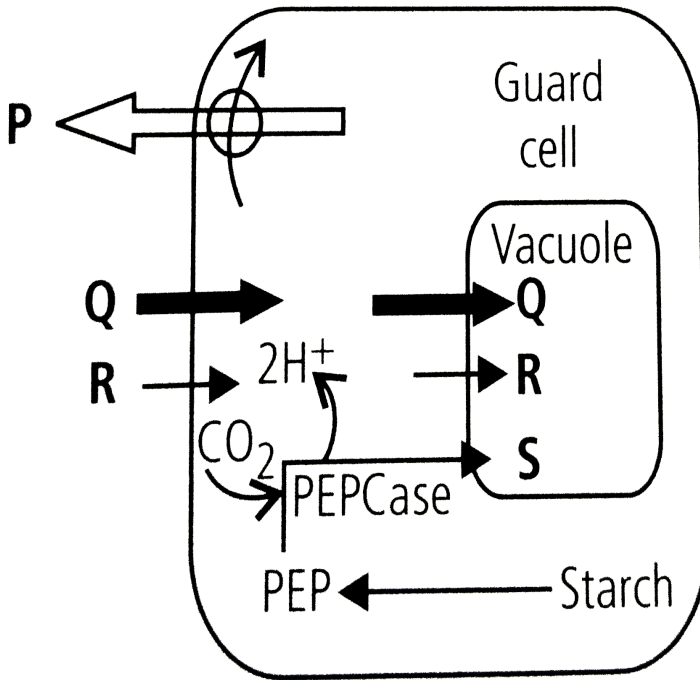
**Answer: A**



[View Text Solution](#)

**103.** Stomatal opening and closing involves the role of various ions. In the given figure arrows depict the movement of certain ions during stomatal opening in light. Identify the ions ( $P$ ,  $Q$ ,  $R$  and  $S$ ) and

select the correct option.



- A.  $P$   $Q$   $R$   $S$   
 Malate<sup>2-</sup>  $K^+$   $Cl^-$   $H^+$
- B.  $P$   $Q$   $R$   $S$   
 $K^+$   $H^+$   $Cl^-$  Malate<sup>2-</sup>
- C.  $P$   $Q$   $R$   $S$   
 $H^+$   $K^+$   $Cl^-$  Malate<sup>2-</sup>
- D.  $P$   $Q$   $R$   $S$   
 $K^+$  Malate<sup>2-</sup>  $H^+$   $Cl^-$

**Answer: C**



**Watch Video Solution**

**104.** Stomatal movements are influenced by a number of environmental factors, Which of the following statements is /are incorrect regarding this?

(ii) Blue light keeps stomata open during the day promoting the movement of  $K_+$  ions into guard cells.

(ii) Increased  $CO_2$  concentration reduces the pH of guard cells which promotes conversion of sugar into starch ultimately causing closure of stomata.

(iii) Abscissic acid under stress conditions, causes rapid movement of  $K^+$  ions into guard cells.

Highly concentrated sucrose or salt solution when applied over to stomata results in stomata opening.

A. (i) and (ii)

B. (iii) and (iv)

C. (iii) only

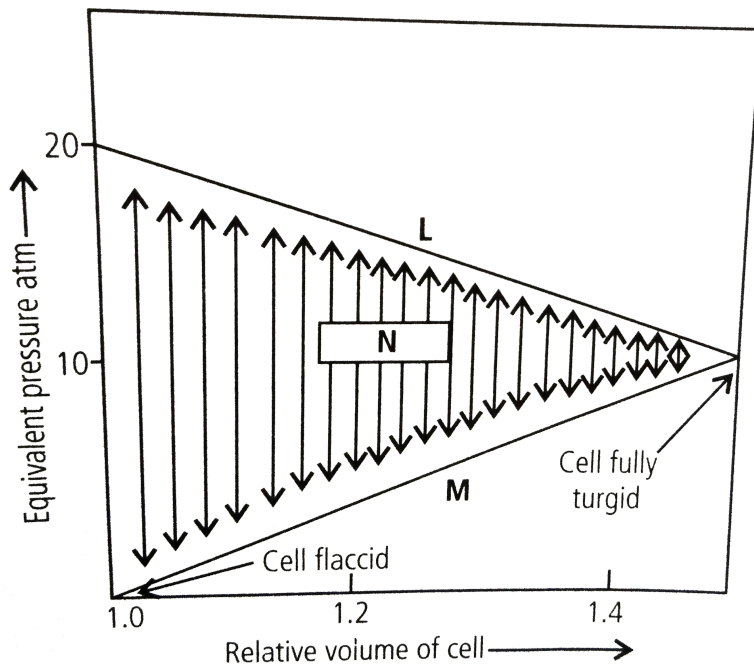
D. (iv) only

**Answer: B**



**Watch Video Solution**

**105.** Given diagram illustrates the changes that occur when a plant cell takes up water. Identify  $L$ ,  $M$  and  $N$  and select the incorrect statement the given diagram



A.  $N$  is the diffusion pressure deficit which becomes zero when  $L$  and  $M$  are equal in

magnitude.

B. In a flaccid cell value of  $N$  becomes equal to that of  $L$

C.  $M$  represents osmotic pressure which increases when a flaccid cell takes up water.

D.  $L$  represents solute potential which decreases with the increase in turgidity of the cell .

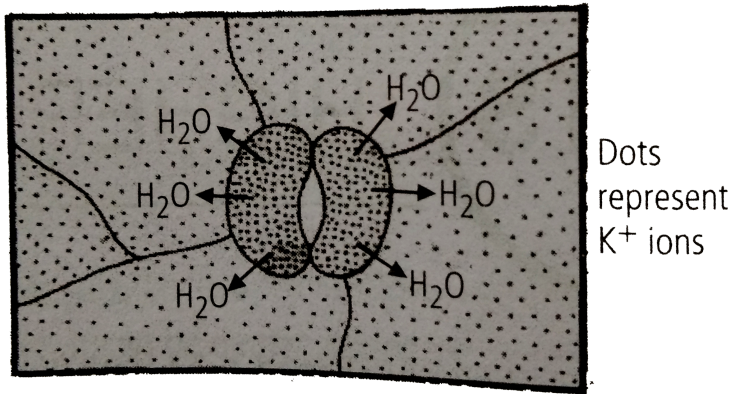
**Answer: C**



**Watch Video Solution**



106. the given diagram illustrates stomata closing  
the major mistake in the diagram is that



- A. the concentration of the  $K^+$  should be more outside the guard cells
- B. the concentration of the  $K^+$  should be equal on both inside and outside

C. the peripheral walls of the guard cells should be thicker

D. the water should move inside the guard cells.

**Answer: A**



**View Text Solution**

**107.** On a warm summer day the transpiration pull is the main force that drives from root parenchyma into the root xylem. The table shows values of  $\Psi_p$  (pressure potential ) and  $\Psi_s$  (solute potential) in root xylem and root parenchyma , in kPa. In which of the

options (a-d) would transpiration pull cause water to move from root parenchyma into the root xylem?

Root parenchyma		Root xylem	
A. $\Psi_p$	$\Psi_s$	$\Psi_p$	$\Psi_s$
200	-190	-200	5
Root parenchyma		Root xylem	
B. $\Psi_p$	$\Psi_s$	$\Psi_p$	$\Psi_s$
-200	220	65	-5
Root parenchyma		Root xylem	
C. $\Psi_p$	$\Psi_s$	$\Psi_p$	$\Psi_s$
200	-220	65	-5
Root parenchyma		Root xylem	
D. $\Psi_p$	$\Psi_s$	$\Psi_p$	$\Psi_s$
200	-220	-65	-5

**Answer: D**



**Watch Video Solution**

**108.** Which of following statements does not apply to reverse osmosis?

A. It is used for water purification

B. In this technique pressure greater than osmotic pressure is applied to the system

C. It is a passive process.

D. It is an active process.

**Answer: C**



**View Text Solution**

**109.** Which one of the following will not directly affect transpiration?

A. Temperature

B. Light

C. Wind speed

D. Chlorophyll content of leaves

**Answer: D**



**View Text Solution**

**110.** The lower surface of leaf will have more number of stomata in a

- A. dorsiventral leaf
- B. isobilateral leaf
- C. both (a) and (b)
- D. none of these.

**Answer: A**



**Watch Video Solution**

**111.** The form of sugar transported through phloem is

A. glucose

B. fructose

C. Sucrose

D. ribose

**Answer: C**



**Watch Video Solution**

**112.** The process of guttation takes place

- A. when the root pressure is high and the rate of transpiration is low
- B. when the root pressure is low and the rate of transpiration is high
- C. when the root pressure equals the rate of transpiration
- D. when the root pressure as well as rate of transpiration are high.

**Answer: A**



**Watch Video Solution**



**113.** Which of the following is an example of imbibition ?

- A. Uptake of water by root hair
- B. Exchange of gases in stomata
- C. Swelling of seed when put in soil
- D. Opening of stomata

**Answer: C**



**Watch Video Solution**

**114.** When a plant undergoes senescence, the nutrients may be

- A. accumulated
- B. bound to cell wall
- C. translocated
- D. none of these.

**Answer: C**



**Watch Video Solution**

**115.** Water potential of pure water at standard temperature is equal to

A. 10

B. 20

C. zero

D. none of these.

**Answer: C**



**Watch Video Solution**

**116.** Choose the correct option Mycorrhiza is a symbiotic association of fungus with root system which helps in

*A.* absorption of water

*B.* mineral nutrition

*C.* translocation

*D.* gaseous exchange.

A. Only *A*

B. Only *B*

C. Both *A* and *B*

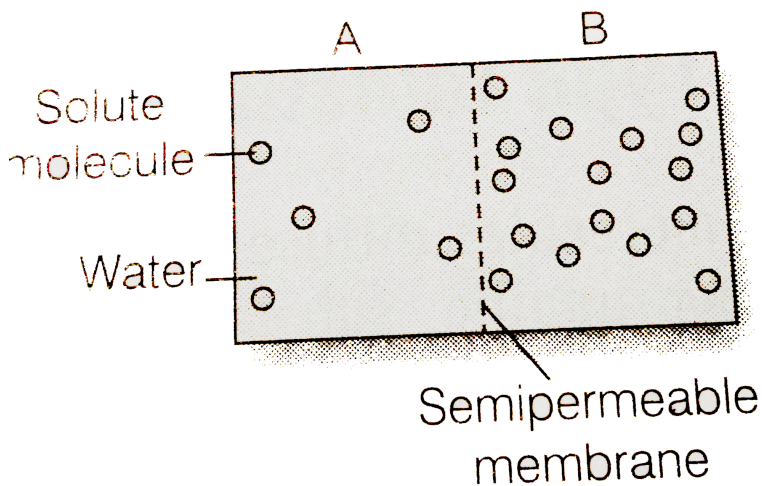
D. Both *B* and *C*

Answer: C



Watch Video Solution

117. Based on the figure given below which of the following statements is not correct ?



- A. Movement of solvent molecules will take place from chamber  $A$  to  $B$ .
- B. Movement of solute will take place from  $A$  to  $B$
- C. Presence of a semi-permeable is a prerequisite for this process to occur.
- D. the direction and rate of osmosis depends on both the pressure gradient and concentration gradient.

**Answer: B**



**Watch Video Solution**

**118.** Match the following and choose the correct option.

A. Leaves (i) Anti-transpirant

B. Seed (i) transpirant

C. Roots (iii) Negative osmotic potential

D Aspirin (iv) Imbibition

E Plasmolysed cell (v) Absorption

A.

$A - (ii), B - (iv), C - (v), D - (i), E - (iii)$

B.

$A - (iii), B - (ii), C - (iv), D - (i), E - (v)$

C.

$A - (i), B - (ii), C - (iii), D - (iv), E - (v)$

D.

$A - (v), B - (iv), C - (iii), D - (ii), E - (i)$

**Answer: A**



**Watch Video Solution**

**119.** Mark the mismatched pair.

A. Amyloplast - Store protein granule

B. Elaioplast - Store oils or fats



C. Chloroplasts - Contain chlorophyll pigments

D. Chromoplasts - Contain coloured pigments

other than chlorophyll

**Answer: A**



**Watch Video Solution**