



# BIOLOGY

## BOOKS - NCERT EXEMPLAR BIOLOGY (HINGLISH)

### CONTROL AND COORDINATION

#### Control And Coordination

1. Which of the following statements is correct about receptors?

- A. Gustatory receptors detect taste while olfactory receptors detect smell
- B. Both gustatory and olfactory receptors detect smell
- C. Auditory receptors detect smell and olfactory receptor detect taste
- D. Olfactory receptor detect taste and gustatory receptor smell

**Answer: A**



**Watch Video Solution**

## 2. Electrical impulse travels in a neuron from

A. Dendrite → Axon → Axonal end → Cell  
body

B. Cell body → dendrite → Axon →  
Axonal end

C. Dendrite → Cell body → Axon →  
Axonal end

D. Axonal end → Axon → Cell body →

Dendrite

**Answer: C**



**Watch Video Solution**

**3.** In a synapse, chemical signal is transmitted from

A. dendritic end of one neuron to axonal end of another neuron

B. axon to cell body of the same neuron

C. cell body to axonal end of the same  
neuron

D. axonal end of one neuron to dendritic  
end of another neuron

**Answer: D**



**Watch Video Solution**

**4. In neuron, conversion**

A. cell body

B. axonal end

C. dendritic end

D. axon

**Answer: B**



**Watch Video Solution**

5. Which is the correct sequence of the compounds of a reflex arc

A. Receptors → Muscles → Sensory

neuron → Motor neuron → Spinal

cord

B. Receptors → Motor neuron → Spinal

cord → Sensory neuron → Muscle

C. Receptors → Spinal cord → Sensory

neuron → Motor neuron → Muscle

D. Receptors → Sensory neuron → Spinal

cord → Motor neuron → Muscle

**Answer: D**



Watch Video Solution

6. Which of the following statements are true?

(i) Sudden action in response to something in the environment is called reflex action

(ii) Sensory neurons carry signals from spinal cord to muscles.

(iii) Motor neurons carry signals from spinal cord to muscles.

(iv) The path through which signals are transmitted from a receptor to a muscle or a gland is called reflex arc.



A. i and ii

B. ii and iii

C. i,iii and iv

D. i and iv

**Answer: C**



**Watch Video Solution**

7. Which of the following statements are true about the brain?

(i) The main thinking part of brain is hind

brain.

(ii) Centres of hearing, smell, memory, sight, etc., are located in fore brain

(iii) Involuntary actions like salivation, vomiting, blood pressure are controlled by the medulla in the hind brain.

(iv) Cerebellum does not control posture and balance of the body.

A. The main thinking part of brain is hind  
brain

B. Centres of hearing, smell, memory, sight, etc., are located in fore brain.

C. Involuntary actions like salivation, vomiting, blood pressure controlled by the medulla in the hind brain.

D. Cerebellum does not control posture and balance of the body.

**Answer: C**



**Watch Video Solution**

8. Posture and balance of the body is controlled by

A. cerebrum

B. cerebellum

C. medulla

D. pons

**Answer: B**



**Watch Video Solution**

9. Spinal cord originates from

A. cerebrum

B. medulla

C. pons

D. cerebellum

**Answer: B**



**Watch Video Solution**

10. The movement of shoot towards light is

- A. geotropism
- B. hydrotropism
- C. chemotropism
- D. phototropism

**Answer: D**



**Watch Video Solution**

**11.** The main function of abscisic acid in plants is to

A. increase the length of cells

B. promote cell division

C. inhibit growth

D. promote growth of stem

**Answer: C**



**Watch Video Solution**

12. Which of the following is not associated with growth of plant?

A. Auxin

B. Gibberellins

C. Cytokinins

D. Abscisic acid

**Answer: D**



**Watch Video Solution**



**13.** Iodine is necessary for the synthesis of which hormone?

A. Adrenaline

B. Thyroxin

C. Auxin

D. Insulin

**Answer: B**



**Watch Video Solution**

**14.** Choose the incorrect statement about insulin

A. It is produced from pancreas

B. It regulates growth and development of the body

C. It regulates blood sugar level

D. Insufficient secretion of insulin will cause diabetes

**Answer: B**



**Watch Video Solution**

15. Select the mis-matched pair

A. Adrenaline-Pituitary gland

B. Testosterone-Testes

C. Estrogen-Ovary

D. Thyroxin-Thyroid gland

**Answer: A**



**Watch Video Solution**

**16.** The shape of guard cells changes due to change in the

- A. protein composition of cells
- B. temperature of cells
- C. amount of water in cells
- D. position of nucleus in the cells

**Answer: C**



**Watch Video Solution**

17. The growth of tendril in pea plants is due to

A. effect of light

B. effect of gravity

C. rapid cell divisions in tendrillar cells that are away from the support

D. rapid cell divisions in tendrillar cells in contact with the support

**Answer: C**



[Watch Video Solution](#)

**18.** The growth of pollen tubes towards ovules is due to

- A. hydrotropism
- B. chemotropism
- C. geotropism
- D. phototropism

**Answer: B**



[Watch Video Solution](#)

**19.** The movement of sunflower in accordance with the path of sun is due to

A. phototropism

B. geotropism

C. chemotropism

D. hydrotropism

**Answer: A**



**Watch Video Solution**

20. The substance that triggers the fall of mature leaves and fruits from plants is due to

A. Auxin

B. gibberellin

C. abscisic acid

D. cytokinin

**Answer: C**



**Watch Video Solution**



21. Which of the following statements about transmission of nerve impulse is incorrect ?

A. Nerve impulse travels from dendritic end towards axonal end

B. At the dendritic end electrical impulses bring about the release of some chemicals which generate an electrical impulse at the axonal end of another neuron.

C. The chemicals released from the axonal end of one neuron cross the synapse and generate a similar electrical impulse in a dendrite of another neuron

D. A neuron transmits electrical impulses not only to another neuron but also to muscle and gland cells

**Answer: B**



**Watch Video Solution**

22. Involuntary actions in the the body are controlled by

- A. medulla in fore brain
- B. medulla in mid brain
- C. medulla in hind brain
- D. medulla in spinal cord

**Answer: C**



**Watch Video Solution**

23. Which of the following is not an involuntary action?

A. Vomiting

B. Salivation

C. Heart beat

D. Chewing

**Answer: D**



**Watch Video Solution**

24. When a person is suffering from severe cold, he or she cannot

A. differentiate the taste of an apple from that of an ice cream

B. differentiate the smell of a perfume from that of an agarbatti

C. differentiate red light from green light

D. differentiate a hot object from a cold object.

**Answer: B**



**Watch Video Solution**

**25.** What is the correct direction of flow of electrical impulses?



**Answer: C**



**Watch Video Solution**

**26.** Which statement is not true about thyroxine?

A. Iron is essential for the synthesis of thyroxine

B. It regulates carbohydrates, protein and fat metabolism in the body

C. Thyroid gland requires iodine to synthesise thyroxine

D. Thyroxine is also called thyroid hormone

**Answer: A**



**Watch Video Solution**

27. Dwarfism results due to

A. Excess secretion of thyroxine

B. Less secretion of growth hormone



C. Less secretion of adrenaline

D. Excess secretion of growth hormone

**Answer: B**



**Watch Video Solution**

**28.** Dramatic changes of body features associated with puberty are mainly because of secretion of

A. oestrogen from testes and testosterone  
from ovary

B. estrogen from adrenal gland and  
testosterone from pituitary gland

C. testosterone from testes and estrogen  
from ovary

D. testosterone from thyroid gland and  
estrogen from pituitary gland

**Answer: C**



**Watch Video Solution**

**29.** A doctor advised a person to take an injection of insulin because

A. his blood pressure was low

B. his heart was beating slowly

C. he was suffering from goitre

D. his sugar level in blood was high

**Answer: D**



**Watch Video Solution**

**30.** The hormone which increase the fertility in males is called

A. oestrogen

B. testosterone

C. insulin

D. growth hormone

**Answer: B**



**Watch Video Solution**

**31.** Which of the following endocrine glands is unpaired?

A. Adrenal

B. Testes

C. Pituitary

D. Ovary

**Answer: C**



**Watch Video Solution**

32. Junction between two neurons is called

- A. cell junction
- B. neuro muscular junction
- C. neural joint
- D. synapse

**Answer: D**



**Watch Video Solution**

**33.** In humans, the life processes are controlled and regulated by

A. reproductive and endocrine systems

B. respiratory and nervous systems

C. endocrine and digestive systems

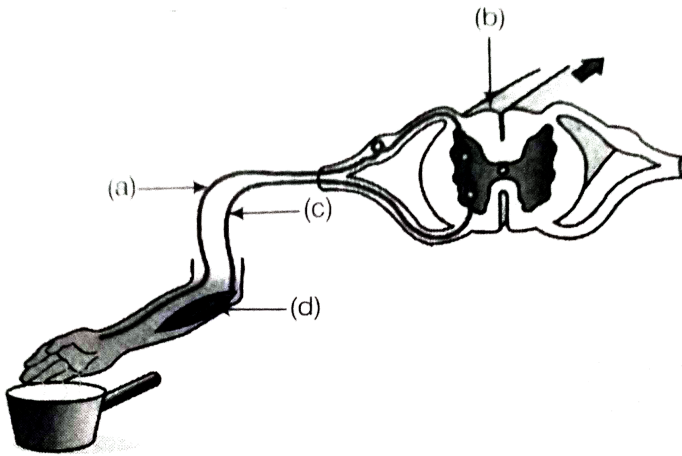
D. nervous and endocrine systems

**Answer: D**



**Watch Video Solution**

**34.** Label the parts (a), (b), (c) and (d) and show the direction of flow of electrical signals in given figure.



**Watch Video Solution**

**35.** Name the plant hormones responsible for the following

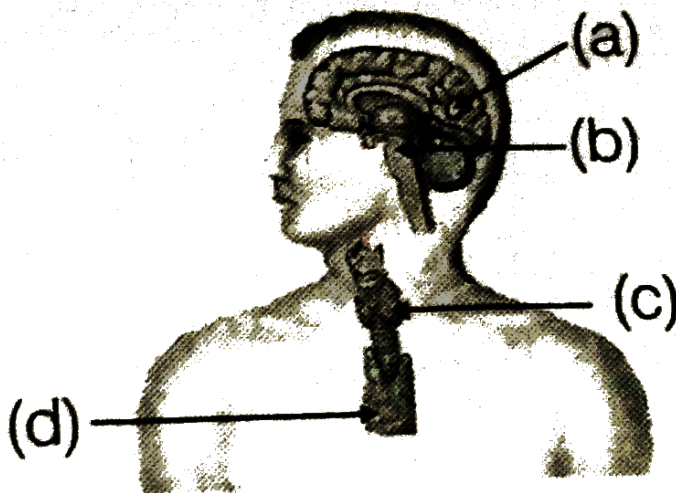


(a) elongation of cells (b) growth of stem

(c ) promotion of cell division (d) falling of senescent leaves

 [Watch Video Solution](#)

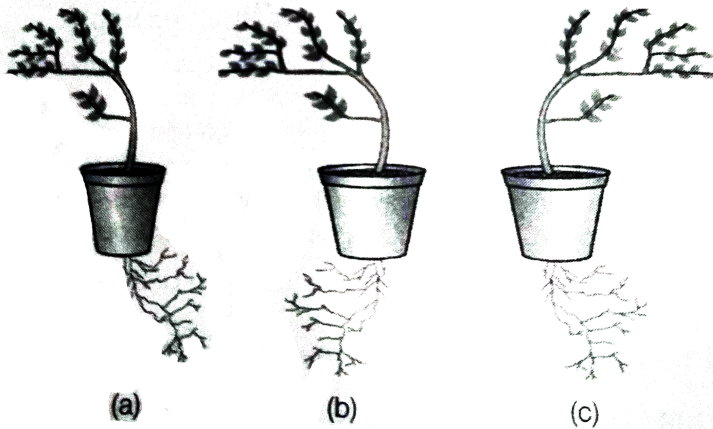
36. Label the endocrine gland in figure





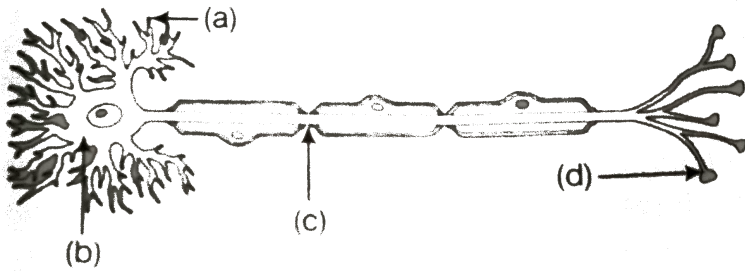
Watch Video Solution

37. In figure (a), (b) and (c), which appears more accurate and why?



Watch Video Solution

38. Label the part of a neuron in Figure below



Watch Video Solution

39. Match the terms of column I with those of column II.

| Column I                                       | Column II |
|--|-----------|
| A. Olfactory receptors                         | 1. Tongue |
| B. Thermo receptors<br>(temperature receptors) | 2. Eye    |
| C. Gustatoreceptors                            | 3. Nose   |
| D. Photoreceptors                              | 4. Skin   |



**Watch Video Solution**

**40.** What is a tropic movement? Explain with an example.



**Watch Video Solution**

**41.** What will happen if intake of iodine in our diet is low?



**Watch Video Solution**

**42.** What happens at the synapse between two neurons?



**Watch Video Solution**

**43.** Answer the following

(a) which hormone is responsible for the changes noticed in females at puberty?

(b) Dwarfism results due to deficiency of which hormone?

(c) Blood sugar level rises due to deficiency of which hormone?

(d) Iodine is necessary for the synthesis of which hormone?



[Watch Video Solution](#)

**44.** Answer the following

(a) Name the endocrine gland associated with brain?

(b) Which gland secretes digestive enzymes as well as hormones?

(c) Name the endocrine gland associated with kidneys?

(d) Which endocrine gland is present in males but not in females?



[Watch Video Solution](#)

**45.** Draw the structure of a neuron and explain its function.



[Watch Video Solution](#)

**46.** What are the major parts of the brain? Mention the functions of different parts.



[Watch Video Solution](#)

**47.** What constitutes the central and peripheral nervous systems? How are the components of central nervous system protected?



[Watch Video Solution](#)

**48.** Mention one function for each of these hormones



(a) Thyroxin (b) Insulin (c) Adrenaline (d)

Growth hormone

(e) Testosterone



[Watch Video Solution](#)

**49.** Name various plant hormones. Also give their physiological effects on plant growth and development.



[Watch Video Solution](#)

**50.** What are reflex actions? Give two examples. Explain a reflex arc



**Watch Video Solution**

**51.** Nervous and hormonal systems together perform the function of control and coordination in human beings.' Justify the statement.



**Watch Video Solution**

**52.** How does chemical coordination take place in animals?



**Watch Video Solution**

**53.** Why is the flow of signals in a synapse from axonal end of one neuron to dendritic end of another neuron but not the reverse?



**Watch Video Solution**