



BIOLOGY

BOOKS - NCERT BIOLOGY (HINGLISH)

PHOTOSYNTHESIS IN HIGHER PLANTS

Multiple Choice Question Mcqs

1. Which metal ion is a constituent of chlorophyll?

A. Iron

B. Copper

C. Magnesium

D. Zinc

Answer: C



Watch Video Solution

2. Which pigment acts directly to convert light energy to chemical energy?

A. Chlorophyll-a

B. Chlorophyll-b

C. Xanthophyll

D. Carotenoid

Answer: A



Watch Video Solution

3. Which range of wavelength (in nm) is called photosynthetically active radiation (PAR)?

A. 100-390

B. 390-430

C. 400-700

D. 760-100,00

Answer: C



Watch Video Solution

4. The most effective wavelength of visible light in photosynthesis is in the region of

A. Blue

B. Green

C. Red

D. Violet

Answer: C



Watch Video Solution

5. Chemosynthetic bacteria obtain energy from

A. sun

B. infrared ray

C. organic substances

D. inorganic chemicals

Answer: D



Watch Video Solution

6. Energy required for ATP synthesis in PSII comes from

- A. proton gradient
- B. electron gradient
- C. reduction of glucose
- D. oxidation of glucose

Answer: A



Watch Video Solution

7. During light reaction in photosynthesis the following are formed.

A. ATP and sugar

B. hydrogen, O_2 and sugar

C. ATP, hydrogen donor and O_2

D. ATP, hydrogen and O_2 donor

Answer: C



Watch Video Solution

8. Dark reaction in photosynthesis is called so because

- A. it can occur in dark also
- B. it does not depend on light energy
- C. it cannot occur during day light
- D. it occurs more rapidly at night

Answer: B



Watch Video Solution

9. PEP is primary CO_2 acceptor in

- A. C_4 plants

B. C_3 plant

C. C_2 plants

D. both C_3 and C_4 plants

Answer: A



Watch Video Solution

10. Splitting of water is associated with

A. photosystem I

B. lumen of thylakoid

C. both photosystem I and II

D. inner surface of thylakoid membrane

Answer: D



Watch Video Solution

11. The correct sequency of flow of electons in the light reaction is

A. PS II, plastoquinone, cytochromes, PS I,
ferredoxin

B. PS I, plastoquinone, cytochromes, PS II,
ferredoxin

C. PS I, ferredoxin, PS II

D. PS I, plastoquinone, cytochromes, PS II,
ferredoxin

Answer: A



Watch Video Solution

12. The enzyme that is not found in a C_3 plant is

A. RuBP carboxylase

B. PEP carboxylase

C. NADP reductase

D. ATP synthase

Answer: B



Watch Video Solution

13. The reaction that is responsible for the primary fixation of CO_2 is catalysed by

- A. RuBP carboxylase
- B. PEP carboxylase
- C. RuBP carboxylase and PEP carboxylase
- D. PGA synthase

Answer: C



Watch Video Solution

14. When CO_2 is added to PEP. The first stable product synthesised is

A. pyruvate

B. glyceraldehyde-3-phosphate

C. phosphoglycerate

D. oxaloacetate

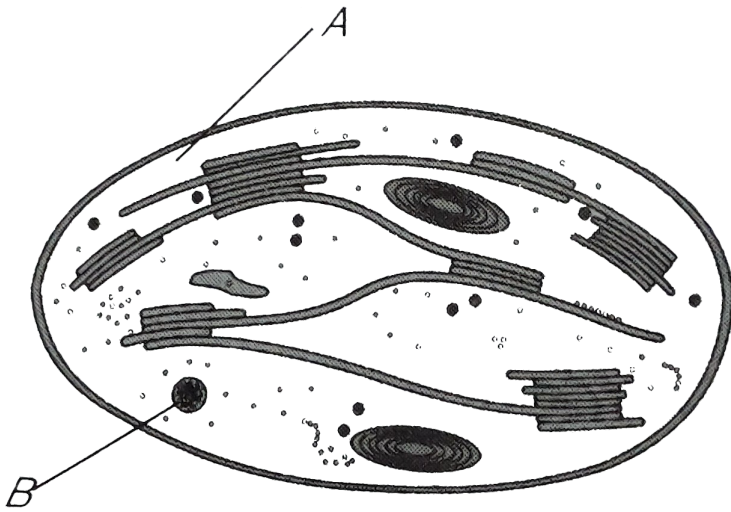
Answer: D



Watch Video Solution

Very Short Answer Type Questions

1. Examine the figure



(a) Is this structure present in animal cell of plant cell ?

(b) Can these be passed on to the progeny?

How ?

(c) Name the metabolic processes taking place in the places marked (A) and (B).



[Watch Video Solution](#)



Based on the above equation, answer the following questions

(a) Where does this reaction take place in plants ?

(b) What is the significance of this reaction ?



[Watch Video Solution](#)

3. Cynobacteria and some other photosynthesis bacteria don't have chloroplasts. How do they conduct photosynthesis ?



[Watch Video Solution](#)

4. (a) NADP reductase enzymes is located on

(b) Breakdown of proton gradient leads to release of



Watch Video Solution

5. Can girdling experiments be done in monocots ? If yes, How ? If no, why not ?



Watch Video Solution

6. $3CO_2 + 9ATP + 6NADPH +$ water \rightarrow
Glyceraldehyde 3-phosphate
 $+9ADP + 6NADP + 8Pi$.

Analyse the above reaction and answer the

following question.

(a) How many molecules of ATP and NADPH are required to fix one molecule of CO_2 ?

(b) Where in the chloroplast does this process occur ?



[Watch Video Solution](#)

7. Does moonlight support photosynthesis ?

Find out .



[Watch Video Solution](#)

8. Some of these terms/chemicals are associated with the C_4 cycle. Explain.

(a) Hatch Slack pathway

(b) Calvin cycle

(c) PEP carboxylase (b) Bundle sheath cells



[Watch Video Solution](#)

9. Where is NADP reductase enzyme located in the chloroplast? What is the role of this enzyme in proton gradient development?



[Watch Video Solution](#)

10. ATPase enzyme consists of two parts. What are those parts ? How are they arranged in the thylakoid membrane ? Conformational change occur in which part of the enzyme ?



[Watch Video Solution](#)

11. Which products formed during the light reaction of photosynthesis are used to drive

the dark reaction ?



Watch Video Solution

12. What is the basis for designating C_3 and C_4 pathways of photosynthesis ?



Watch Video Solution

Short Answer Type Question

1. Succulents are known to keep their stomata closed during the day to check transpiration.

How do they meet their photosynthetic CO_2 requirements ?



[Watch Video Solution](#)

2. Chlorophyll-'a' is primary pigment for the light reaction. What are assessory pigments ?

What is their role in photosynthesis ?



[Watch Video Solution](#)

3. Do reaction of photosynthesis called ,as 'Dark Reaction' need light ? Explain



[Watch Video Solution](#)

4. How are photosynthesis and respiration related to each other ?



[Watch Video Solution](#)

5. If a green plant is kept in dark with proper ventilation, can this plant carry out photosynthesis ? Can anything be given as supplement to maintain its growth or survival ?



[Watch Video Solution](#)

6. Photosynthetic organisms occur at different depths in the ocean. Do they receive qualitatively and quantitatively the same light

? How do they adapt to carry out photosynthesis under these conditions.



Watch Video Solution

7. In tropical rain forests, the canopy is thick and shorter plants growing below it, receive filtered light. How are they able to carry out photosynthesis ?



Watch Video Solution

8. What conditions enable RuBisCO to function as an oxygenase ? Explain the ensuing process.



Watch Video Solution

9. Why does the rate of photosynthesis decrease at higher temperatures ?



Watch Video Solution

10. Explain how during light reaction of photosynthesis, ATP synthesis is a chemiosmotic phenomenon.



Watch Video Solution

11. Find out how Melvin Calvin worked out the complete biosynthetic pathway for synthesis of sugar.



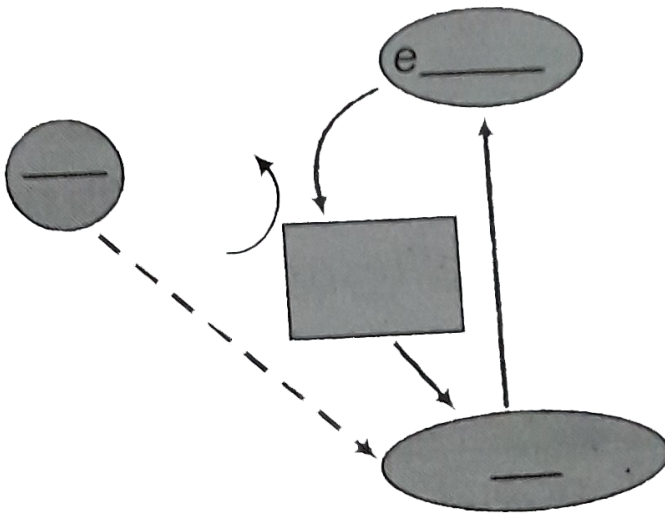
View Text Solution

12. Six turns of Calvin cycle are required to generate one mole of glucose. Explain.



Watch Video Solution

13. Complete the flow chart for cyclic photosphorylation of the photosystem -I.



[Watch Video Solution](#)

14. In what kind of plants do you come across 'Kranz' anatomy? To which conditions are those plants better adapted? How are these

plants better adapted than the plants which lack this anatomy.



[Watch Video Solution](#)

15. A process is occurring throughout the day, in 'X' organis. Cells are participating in this process. During this process ATP, CO_2 and water are evolved. It is not a light dependent process.

(a) Name the process

(b) Is it a catabolic or an anabolic process ?

(c) What could be the raw material of this process ?



[Watch Video Solution](#)

16. Tomatoes, carrot and chillies are red in colour due to the presence of one pigment. Name the pigment. Is it a photosynthetic pigments ?



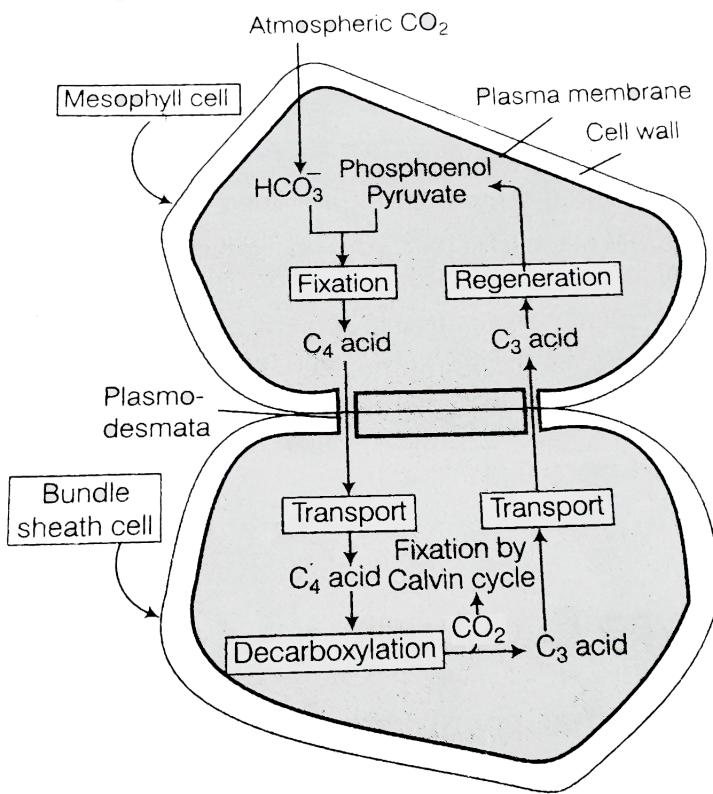
[Watch Video Solution](#)

17. Why do we believe chloroplasts and mitochondria to be semi-autonomous organelle ?



Watch Video Solution

18. Observe the diagram and answer the following .



(a) Which group of plants exhibit these two type cells ?

(b) What is the first product of C₄ cycle ?

(c) Which enzyme is there is bundle sheath cells and mesophyll cells ?



19. A cyclic process is occurring in C_3 plant, which is light dependent and needs O_2 . This process energy rather it consumes energy (a)

Can you name the given process ?

(b) Is it essential for survival ?

(c) What are the end products of this process ?

(d) Where does it occur ?



20. Suppose Euphorbia and Maize are grown in the tropical area.

(a) Which one of them do you think will be able to survive under such conditions?

(b) Which one of them is more efficient in terms of photosynthetic activity?

(c) What differences do you think are there in their leaf anatomy?



[Watch Video Solution](#)

Long Answer Type Question

1. Is it correct to say that photosynthesis occurs only in leaves of a plant? Besides leaves, what are the other parts that may be capable of carrying out photosynthesis? Justify.



[Watch Video Solution](#)

2. The entire process of photosynthesis consists of a number of reactions. Where in the cell do each of these take place?

(a) Synthesis of ATP and NADPH.....

(b) Photolysis of water

(c) fixation of CO_2

(d) Synthesis of sugar molecule

(e) Synthesis of starch.....



Watch Video Solution

3. Which property of the pigment is responsible for its ability to initiate the process of photosynthesis ? Why is the rate of photosynthesis higher in the red and blue regions of the spectrum of light ?



[Watch Video Solution](#)

4. What can we conclude from the statement that the action and absorption spectrum of photosynthesis overlaps? At which wavelength do they show peaks. ?



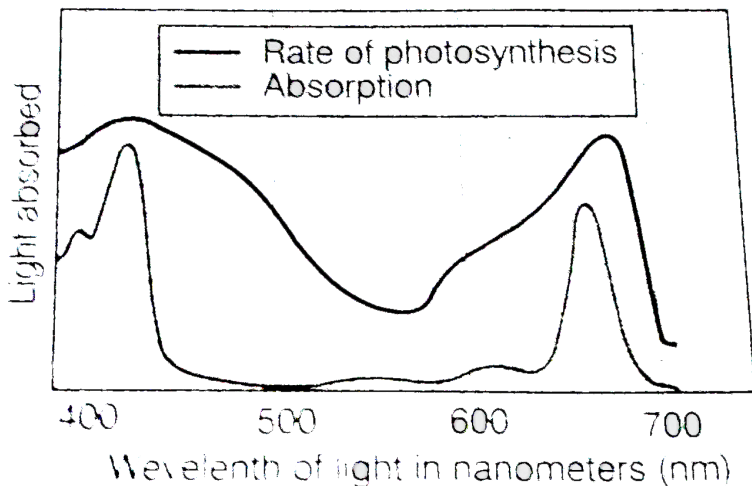
[View Text Solution](#)

5. Under what condition are C_4 plants superior to C_3



[Watch Video Solution](#)

6. In the figure given below, the black line (upper) indicates action spectrum for photosynthesis and the lighter line (lower) indicates the absorption spectrum of chlorophyll-a, answer the following



(a) What does the action spectrum indicate?

How can we plot an action spectrum ? Explain with an example.

(b) How can we derive an absorption spectrum for any substance ?

(c) If chlorophyll-a is responsible for light reaction of photosynthesis, why do the action spectrum and absorption spectrum not overlap ?



[View Text Solution](#)

7. What are the important events and end products of the light reactions?

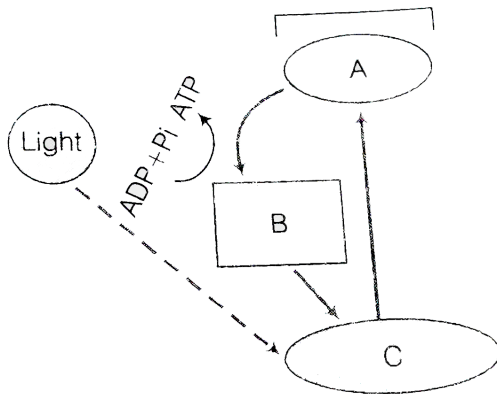


[View Text Solution](#)

8. In the diagram shown below label A,B,C .

What type of phosphorylation is possible in

this ?



B-Electron transport system



[View Text Solution](#)

9. Why is the RuBisCo enzyme more appropriately called RUBP carboxylase-oxygenase and what important role does it play in photosynthesis ?



[Watch Video Solution](#)

10. What special anatomical features are displayed by leaves of C_4 plants ?

How do they provide advantage over the structure of C_3 plants ?



[Watch Video Solution](#)

11. Name the two important enzymes of C_3 and C_4 pathway, respectively. What important

role do they play in fixing CO_2 ?



[Watch Video Solution](#)

12. Why is RuBisCo enzyme the most abundant enzyme in the world ?



[Watch Video Solution](#)

13. Why does not photorespiration take place in C_4 plants ?



[Watch Video Solution](#)

