



BIOLOGY

BOOKS - NCERT BIOLOGY (HINGLISH)

ORGANISMS AND POPULATIONS

Organisms And Populations

1. Autecology is the

A. relation of a population to its environment

B. relation of an individual to its environment

C. relation of a community to its environment

D. relation of a biome to its environment

Answer: B



Watch Video Solution

2. Ecotone is

A. a polluted area

B. the bottom of a lake

C. a zone of transition between two communities

D. a zone of developing community

Answer: C



Watch Video Solution

3. Biosphere is

A. a component in the ecosystem

B. composed of the plants present in the
soil

C. life in the outer space

D. composed of all living organisms
present on earth which interact with the
physical environment

Answer: D



4. Ecological niche is

A. the surface area of the ocean

B. an ecologically adapted zone

C. the physical position and functional role
of a species within the community

D. formed of all plants and animals living at
the bottom of a lake

Answer: C



Watch Video Solution

5. According to Allen's Rule, the mammals from colder climates have

A. shorter ears and longer limbs

B. longer ears and shorter limbs

C. longer ears and longer limbs

D. shorter ears and shorter limbs

Answer: D



6. Salt concentration (salinity) of the sea measured in parts per thousand is

A. 10 – 15

B. 30 – 70

C. 0 – 5

D. 30 – 35

Answer: D



7. Formation of tropical forests needs mean annual temperature and mean annual precipitation as

A. $18 - 25^{\circ}C$ and $150 - 400cm$

B. $5 - 15^{\circ}C$ and $50 - 100cm$

C. $30 - 50^{\circ}C$ and $100 - 150cm$

D. $5 - 15^{\circ}C$ and $100 - 200cm$

Answer: A



Watch Video Solution

8. Which of the following forest plants controls the light conditions at the ground ?

A. Lianas and climbers

B. Shrubs

C. Tall trees

D. Herbs

Answer: C



Watch Video Solution

9. What will happen to a well growing herbaceous plant in the forest if it is transplanted outside the forest in a park?

A. It will grow normally

B. It will grow well because it is planted in the same locality

C. It may not survive because of change in its micro climate

D. It grows very well because the plant gets
more sunlight

Answer: C



Watch Video Solution

10. If a population of 50 Paramecium present in a pool increases to 150 after an hour, what would be the growth rate of population ?

A. 50 per hour

B. 200 per hour

C. 5 per hour

D. 100 per hour

Answer: D



Watch Video Solution

11. What would be the percent growth or birth rate per individual per hour for the same population mentioned in the previous question (Question 10)?

A. 100

B. 200

C. 50

D. 150

Answer: B



Watch Video Solution

12. A population has more young individuals compared to the older individuals. What

would be the status of the population after some years ?

A. It will decline

B. It will stabilise

C. It will increase

D. It will first decline and then stabilise

Answer: C



Watch Video Solution

13. What parameters are used for tiger census in our country's national parks and sanctuaries ?

A. Pug marks only

B. Pug marks and faecal pellets

C. Faecal pellets only

D. Actual head counts

Answer: B



Watch Video Solution

14. Which of the following would necessarily decrease the density of a population in a given habitat ?

A. Natality $>$ mortality

B. Immigration $>$ emigration

C. Mortality and emigration

D. Natality and immigration

Answer: C



Watch Video Solution

15. A protozoan reproduces by binary fission. What will be the number of protozoans in its population after six generations ?

A. 128

B. 24

C. 64

D. 32

Answer: C



Watch Video Solution

16. In 2005, for each of the 14 million people present in a country, 0.028 were born and 0.008 died during the year. Using exponential equation, the number of people present in 2015 is predicted as

A. 25 millions

B. 17 millions

C. 20 millions

D. 18 millions

Answer: B



Watch Video Solution

17. Amensalism is an association between two species where

A. one species is harmed and other is benefitted

B. one species is harmed and other is unaffected

C. one species is benefitted and other is unaffected

D. both the species are harmed.

Answer: B



Watch Video Solution

18. Lichens are the associations of

A. bacteri and fungus

B. algae and bacterium

C. fungus and algae

D. fungus and virus

Answer: C



Watch Video Solution

19. Which of the following is a partial root parasite ?

A. Sandal wood

B. Mistletoe

C. Orobanche

D. Ganoderma

Answer: A



Watch Video Solution

20. Which one of the following organisms reproduces sexually only once in its life time ?

A. Banana plant

B. mango

C. Tomato

D. Eucalyptus

Answer: A



Watch Video Solution

21. Species that can tolerate narrow range of temperature are called.....



Watch Video Solution

22. What are eurythermic species?



Watch Video Solution

23. Organisms that can tolerate a wide range of salt concentration are termed as



Watch Video Solution

24. Define stenohaline species.



Watch Video Solution

25. What is the interaction between two species called?



Watch Video Solution

26. In commensalism:



Watch Video Solution

27. The phenomenon in which one species inhibits the growth another species is called :



Watch Video Solution

28. Mycorrhiza is a



Watch Video Solution

29. Emergent land plants that can tolerate the salinities of the sea are called.



Watch Video Solution

30. Why do high altitude areas have brighter sunlight and lower temperatures as compared

to the plains?



Watch Video Solution

31. Homeostasis is



Watch Video Solution

32. AESTIVATION



Watch Video Solution

33. What is diapause and its significance ?



Watch Video Solution

34. What would be the growth rate pattern, when the resources are unlimited?



Watch Video Solution

35. What are the organisms that feed on plant sap and other plant parts called?



Watch Video Solution

36. What is high altitude sickness? Write its symptoms.



Watch Video Solution

37. Give a suitable example for somnambulism.



Watch Video Solution

38. Define ectoparasite and endoparasite and give suitable examples.



Watch Video Solution

39. What is brood parasitism? Explain with the help of an example.



Watch Video Solution

40. Why are coral reefs not found in the regions from West Bengal to Andhra Pradesh but are found in Tamil Nadu and on the east coast of India?



Watch Video Solution

41. If a freshwater fish is placed in an aquarium containing sea water, will the fish be able to survive? Explain giving reasons.



Watch Video Solution

42. Why do all the freshwater organisms have contractile vacuoles whereas majority of marine organisms lack them?



Watch Video Solution

43. Define heliophytes and sciophytes. Name a plant from your locality that is either heliophyte or sciophyte.



Watch Video Solution

44. Why do submerged plants receive weaker illumination than exposed floating plants in a lake?



Watch Video Solution

45. In a sea shore, the benthic animals live in sandy, muddy and rocky substrate and accordingly developed the following adaptations.

(a) Burrowing

(b) Building cubes

(c) Holdfasts/peduncle

Find the suitable substratum against each adaptation.



[Watch Video Solution](#)

46. Categorise the following plants into hydrophytes, halophytes, mesophytes and xerophytes. Give reasons for your answers.

(a) Salvinia (b) Opuntia

(c) Rhizophora (d) Mangifera



Watch Video Solution

47. In a pond, we see plants which are free-floating, rooted - submerged, rooted emergent rooted with floating leaves. Write the type of plants against each of them.

	Plant Name	Type
(a)	<i>Hydrilla</i>	
(b)	<i>Typha</i>	
(c)	<i>Nymphaea</i>	
(d)	<i>Lemna</i>	
(e)	<i>Vallisneria</i>	



Watch Video Solution

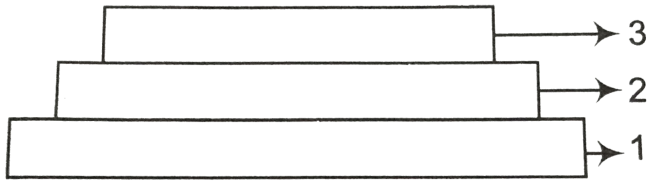
48. The density of a population in a habitat per unit area is measured in different units.

Write the unit of measurement against the following

- (a) Bacteria
- (b) Banyan
- (c) Deer
- (d) Fish



Watch Video Solution



49.

(a) Label the three tiers 1, 2, 3 given in the above age pyramid.

(b) What type of population growth is represented by the above age pyramid?



[Watch Video Solution](#)

50. In an association of two animal species, one is a termite which feeds on wood and the

other is a protozoan *Trichonympha* present in the gut of the termite. What type of association they establish?



[Watch Video Solution](#)

51. Lianas are vascular plants rooted in the ground and maintain erectness of their stem by making use of other trees for support. They do not maintain direct relation with those trees. Discuss the type of association the lianas have with the trees.



[Watch Video Solution](#)

52. Give the scientific names of any two microorganisms inhabiting the human intestine.



[Watch Video Solution](#)

53. What is a tree line?



[Watch Video Solution](#)

54. Define 'zero population growth rate'. Draw a age pyramid for the same.



Watch Video Solution

55. List any four characters that are employed in human population census.



Watch Video Solution

56. Give one example for each of the following types

(a) Migratory animal (b) Camouflaged animal

(c) Predator animal (d) Biological control agent

(e) Phytophagous animal (f) Chemical defense agent



Watch Video Solution

57. Fill in the blanks

Species A	Species B	Type of Interaction	Example
+	-	_____	_____
+	+	_____	_____
+	_____	Commensalism	_____



Watch Video Solution

58. Observe the set of 4 figures A, B, C and D and answer the following questions.

I. Which one of the figures shows mutualism?

II. What kind of association is shown in D?

III. Name the organisms and the association in

C.

IV. What role is the insect performing in B?



Fig. (A)

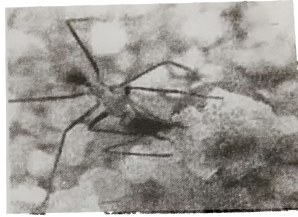


Fig. (B)

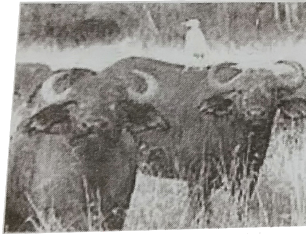


Fig. (C)



Fig. (D)



Watch Video Solution

59. Comment on the following figure: I, II and III, A, B, C, D, G, P, Q, R, S are species.

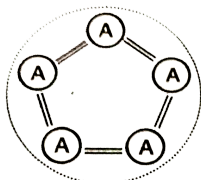


Fig. I

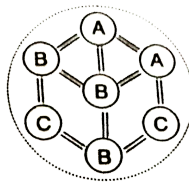


Fig. II

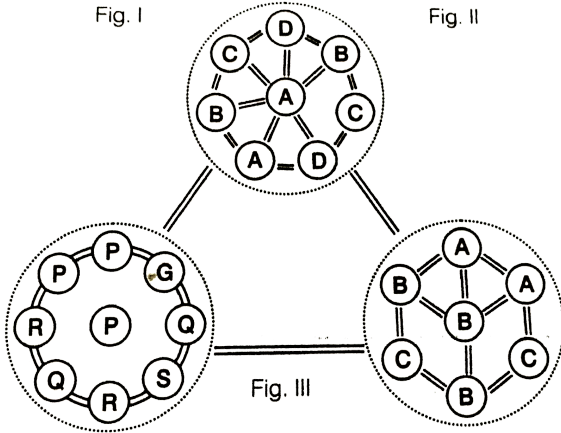


Fig. III



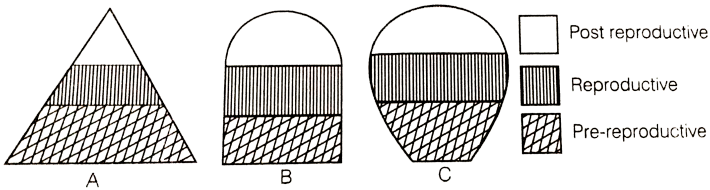
[Watch Video Solution](#)

60. An individual and a population has certain characteristics. Name these attributes with definitions.



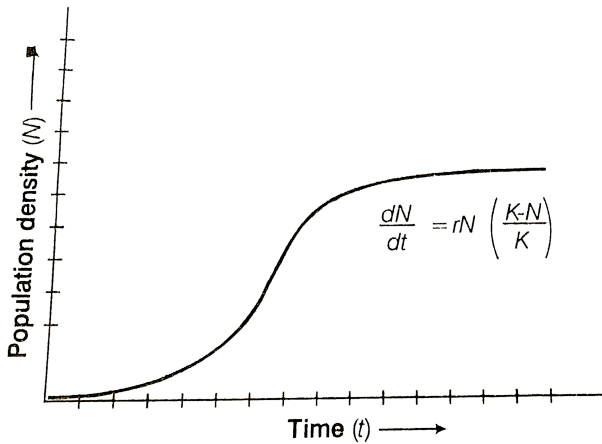
Watch Video Solution

61. The following diagrams are the age pyramids of different populations. Comment on the status of these populations.



Watch Video Solution

62. Comment on the growth curve given below.



[Watch Video Solution](#)

63. A population of *Paramecium caudatum* was grown in a culture medium. After 5 days the culture medium became overcrowded with

Paramecium and had depleted nutrients. What will happen to the population and what type of growth curve will population attain? Draw the growth curve.



[Watch Video Solution](#)

64. Discuss the various types of positive interactions between species.



[Watch Video Solution](#)

65. In an aquarium two herbivorous species of fish are living together and feeding on phytoplanktons. As per the Gause's principle, one of the species is to be eliminated in due course of time, but both are surviving well in the aquarium. Give possible reasons.



Watch Video Solution

66. While living in and on the host species, the animal parasite has evolved certain

adaptations. Describe these adaptations with examples.



[Watch Video Solution](#)

67. Do you agree that regional and local variations exist within each biome?

Substantiate your answer with suitable example.



[Watch Video Solution](#)

68. Which element is responsible for causing soil salinity? At what concentration does the soil become saline?



Watch Video Solution

69. Does light factor affect the distribution of organisms? Write a brief note giving suitable examples of either plants or animals.



Watch Video Solution

70. Give one example for each of the following

I. Eurythermal plant species.....

II. A hot water spring organism.....

III. An organism seen in deep ocean
trenches.....

IV. An organism seen in compost pit.....

V. A parasitic angiosperm.....

VI. A stenothermal plant species.....

VII. Soil organism.....

VIII. A benthic animal.....

IX. Antifreeze compound seen in antarctic
fish.....





Watch Video Solution