



## PHYSICS

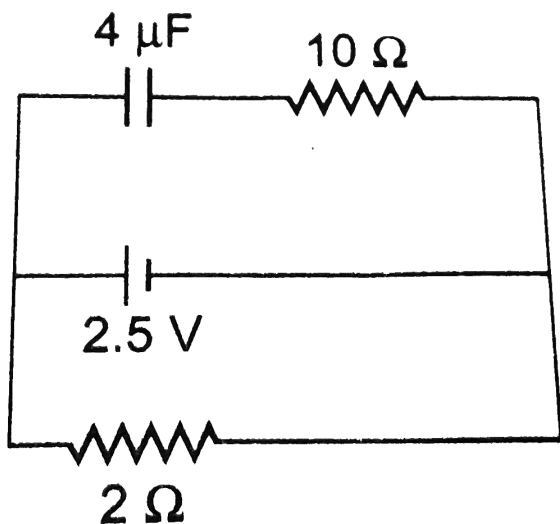
### BOOKS - NCERT PHYSICS (HINGLISH)

# ELECTROSTATIC POTENTIAL AND CAPACITANCE

## Electrostatic Potential And Capacitance

1. A capacitor of  $4\mu F$  is connected as shown in the figure. The internal resistance of the

battery is  $0.5\Omega$ . The amount of charge on the capacitor plates will be



- A. 0
- B.  $4\ \mu\text{C}$
- C.  $16\ \mu\text{C}$
- D.  $8\ \mu\text{C}$

**Answer: D**



**Watch Video Solution**

2. A positively charged particle is released from rest in a uniform electric field. The electric potential energy of the charge.

A. remains a constant because the electric field is uniform

B. increases because the charge moves along the electric field

C. decreases because the charge moves  
along the electric field

D. decreases because the charge moves  
opposite to the electric field

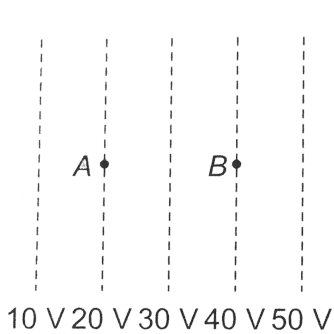
**Answer: C**



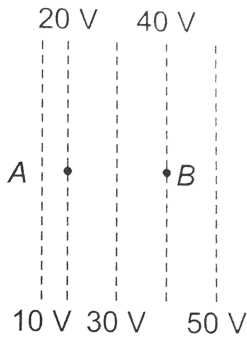
**Watch Video Solution**

**3.** Figure shows some equipotential lines distributed in space. A charged object is

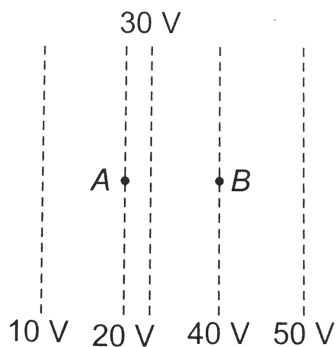
moved from point  $A$  to point  $B$ .



**Fig. (i)**



**Fig. (ii)**



**Fig. (iii)**

A. The work done in Fig. (i) is the greatest

B. The work done in fig. (ii) is least

C. The work done is the same in Fig. (i), fig (ii) and fig (iii)

D. The work done in fig. (iii) is greater than fig. (ii) but equal to that in

**Answer: C**



**Watch Video Solution**

4. The electrostatic potential on the surface of a charged conducting sphere is  $100V$ . Two statements are made in this regard

$S_1$ : at any inside the sphere, electric intensity is zero.

$S_2$ : at any point inside the sphere, the electrostatic potential is  $100V$ .

A.  $S_1$  is true but  $S_2$  is false.

B. Both  $S_1$  and  $S_2$  are false.

C.  $S_1$  is true,  $S_2$  is also true and  $S_1$  is the cause of  $S_2$ .

D.  $S_1$  is true,  $S_2$  is also true but the statements are independent.

**Answer: C**



**Watch Video Solution**

5. Equipotentials at a great distance from a collection of charges whose total sum is not zero are approximately

A. spheres

B. planes

C. paraboloids

D. ellipsoids



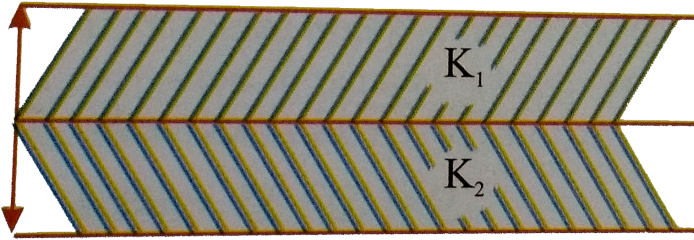
**Answer: A**



**Watch Video Solution**

6. A parallel plate capacitor is made of two dielectric blocks in series. One of the blocks has thickness  $d_1$  and dielectric constant  $K_1$  and the other has thickness  $d_2$  and dielectric constant  $K_2$  as shown in figure. This arrangement can be through as a dielectric slab of thickness  $d( = d_1 + d_2)$  and effective

dielectric constant  $K$ . The  $K$  is.



- A.  $\frac{K_1 d_1 + K_2 d_2}{d_1 + d_2}$
- B.  $\frac{K_1 d_1 + K_2 d_2}{K_1 + K_2}$
- C.  $\frac{K_1 K_2 (d_1 + d_2)}{(K_1 d_1 + K_2 d_2)}$
- D.  $\frac{2K_1 + K_2}{K_1 + K_2}$ .

**Answer: C**



**Watch Video Solution**

7. Consider a uniform electric field in the  $\hat{z}$  direction. The potential is a constant.

A. in all space

B. for any  $x$  for a given  $z$

C. for any  $y$  for a given  $z$

D. on the  $x$ - $y$  plane for given  $z$

**Answer: B::C::D**



**Watch Video Solution**

## 8. Equipotential surfaces

- A. are closer in regions of large electric fields compared to regions of lower electric field
- B. will be more crowded near sharp edges of a conductor.
- C. will be more crowded near regions of large charge densities
- D. will always be equally spaced.

**Answer: A::B::C**



**Watch Video Solution**

9. The work done to move a charge along an equipotential from  $A$  to  $B$

A. cannot be defined as  $-\int_A^B E \cdot dl$

B. must be defined as  $-\int_A^B E \cdot dl$

C. is zero

D. can have a non-zero value

**Answer: C**



**Watch Video Solution**

**10.** In a region of constant potential

A. the electric field is uniform

B. the electric field is zero

C. there can be no charge inside the region

D. the electric field shall necessarily change

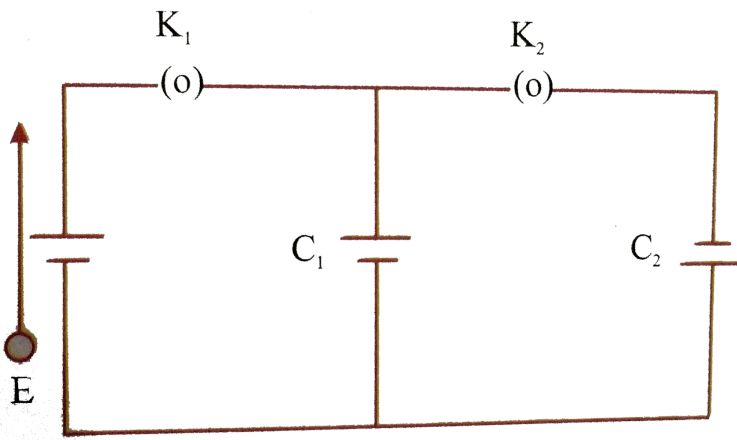
if a charge is placed outside the region.

**Answer: B::C**



**Watch Video Solution**

**11.** In the circuit shown in figure , initially key  $K_1$  is closed and key  $K_2$  is open. Then  $K_1$  is opened and  $K_2$  is closed (order is important).  
[Take  $Q'_1$  and  $Q'_2$  as charges on  $C_1$  and  $C_2$  and  $V_1$  and  $V_2$  as voltage respectively].



Then

A. charge on  $C_1$  gets redistributed such

$$\text{that } V_1 = V_2$$

B. charge on  $C_1$  gets redistributed such

$$\text{that } Q_1' = Q_2'$$

C. charge on  $C_1$  gets redistributed such

$$\text{that } C_1 V_1 + C_2 V_2 = C_1 E$$



D. charge on  $C_1$  gets redistributed such

$$\text{that } Q_1' + Q_2' = Q.$$

**Answer: A**



**Watch Video Solution**

**12.** If a conductor has a potential  $V \neq 0$  and there are no charges anywhere else outside, then

A. there must be charges on the surface on  
inside itself

B. there cannot be any charge in the body  
of the conductor

C. there must be charges only on the  
surface

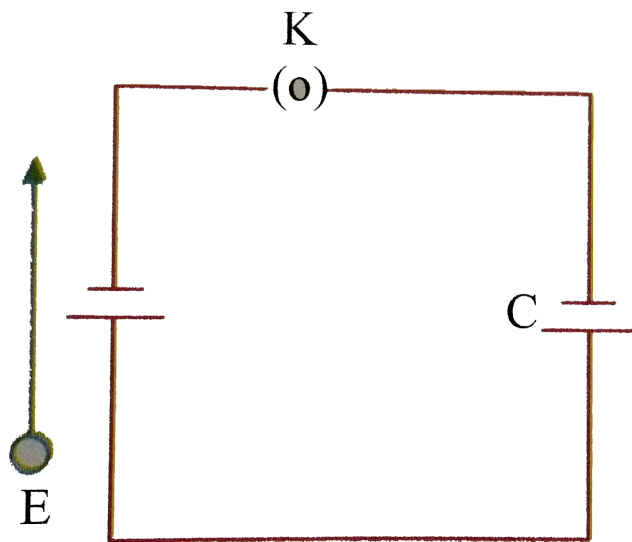
D. there must be charges inside the surface

**Answer: A::B**



**Watch Video Solution**

13. A parallel plate capacitor is connected to a battery as shown in figure. Consider two situations :



A : Key  $K$  is kept closed and plates of capacitors are moved apart using insulating handle.

B : Key  $K$  is opened and plates of capacitors are moved apart using insulating handle.

Choose the correct options (s).

A. In A  $Q$  remains same but  $C$  changes.

B. In B  $V$  remains same but  $C$  changes

C. In A  $V$  remains same and hence  $Q$  changes.

D. In B  $Q$  remains same and hence  $V$  changes.

**Answer: C**



[Watch Video Solution](#)

14. Consider two conducting spheres of radii  $R_1$  and  $R_2$  with  $R_1 > R_2$ . If the two are at the same potential, the larger sphere has more charge than the smaller sphere. State whether the charge density of the smaller sphere is more or less than that of the larger one.



[Watch Video Solution](#)

**15.** Do free electrons travel to region of higher potential or lower potential?



**Watch Video Solution**

**16.** Can there be a potential difference between two adjacent conductors carrying the same charge ?



**Watch Video Solution**

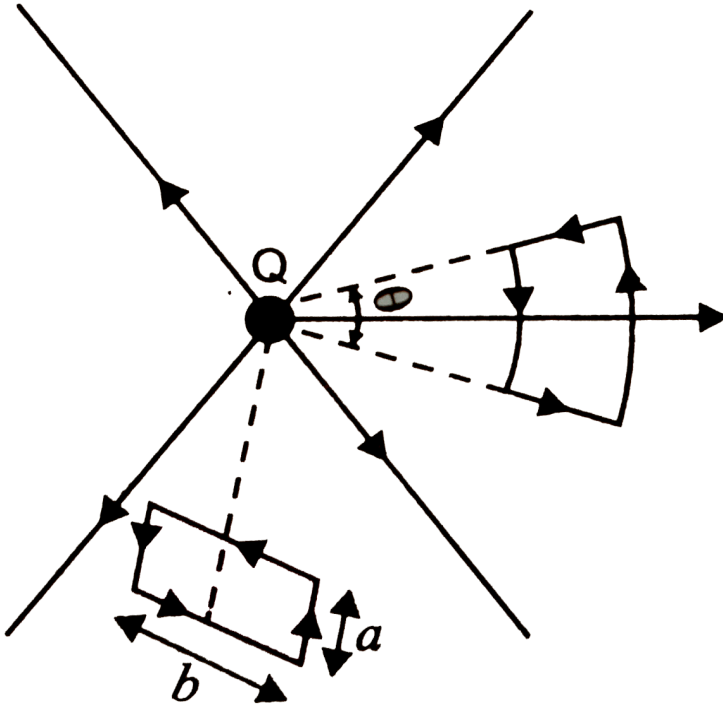
**17.** Can the potential function have a maximum or minimum in free space ?



**Watch Video Solution**

**18.** A test charge  $q$  is made to move in the electric field of a point charge  $Q$  along two different closed paths. Fig. First path has sections along and perpendicular loop of the same area as the first loop. How does the work

done compare in the two cases?



[Watch Video Solution](#)

**19.** Prove that a closed equipotential surface with no charge within itself must enclose an



equipotential volume.



[Watch Video Solution](#)

**20.** A capacitor has some dielectric between its plates, and the capacitor is connected to a DC source. The battery is now disconnected and then the dielectric is removed. State whether the capacitance, the energy stored in it, electric field, charge stored and the voltage will increase or remain constant.



[Watch Video Solution](#)

21. Prove that, if an insulated, uncharged conductor is placed near a charged conductor and no other conductors are present, the uncharged body must be intermediate in potential between that of the charged body and that of infinity.



[Watch Video Solution](#)

22. Calculate potential energy of a point charge  $-q$  placed along the axis due to a

charge  $+Q$  uniformly distributed along a ring of radius  $R$ . Sketch P.E. as a function of a axial distance  $z$  from the center of the ring, Looking at graph, can you see what happen if  $-q$  is displaced slightly from the centre of the ring (along the axis) ?



[Watch Video Solution](#)

**23.** Calculate potential on the axis of a ring due to charge  $Q$  uniformly distributed along the ring of radius  $R$ .



Watch Video Solution

24. Find the equation of the equipotentials for an infinite cylinder of radius  $r_0$  carrying charge of linear density  $\lambda$ .



Watch Video Solution

25. Two point charges of magnitude  $+q$  and  $-q$  are placed at  $(-d/2, 0, 0)$  and  $(d/2, 0, 0)$  respectively. Find the equation of the

equipotential surface where the potential is zero.



[Watch Video Solution](#)

**26.** A parallel plate capacitor is filled by a dielectric whose relative permittivity varies with the applied voltage ( $U$ ) as  $\epsilon = \alpha U$  where  $\alpha = 2V^{-1}$ . A similar capacitor with no dielectric is charged to  $U_0 = 78V$ . It is then connected to the uncharged capacitor with

the dielectric. Find the final voltage on the capacitors.



[Watch Video Solution](#)

**27.** A capacitor is made of two circular plates of radius  $R$  each, separated by a distance  $d \ll R$ . The capacitor is connected to a constant voltage. A thin conducting disc of radius  $r \ll R$  and thickness  $t \ll r$  is placed at a center of the bottom plate. Find

the minimum voltage required to lift the disc if the mass of the disc is  $m$ .

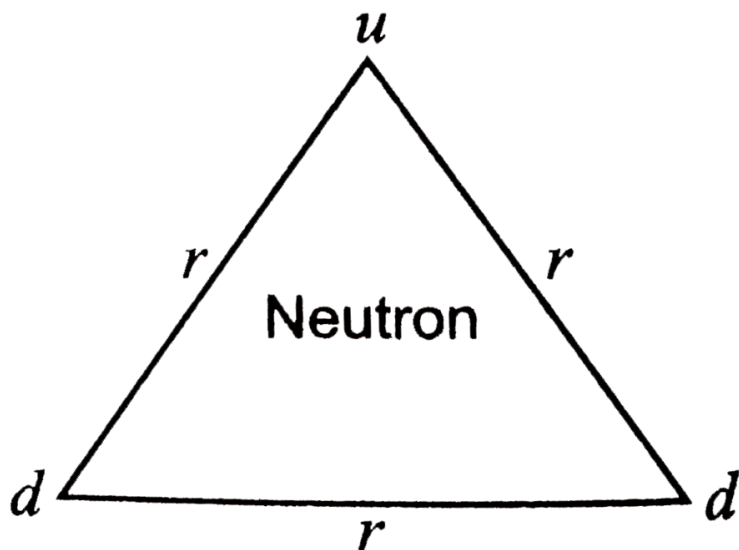


**Watch Video Solution**

**28.** (a) In a quark model of elementary particles, a neutron is made of one up quarks [charge  $(2/3)e$ ] and two down quarks [charges  $-(1/3)e$ ]. Assume that they have a triangle configuration with side length of the order of  $10^{-15}m$ . Calculate electrostatic potential energy of neutron and compare it

with its mass 939 MeV.

(b) Repeat above exercise for a proton which is made of two up and one down quark.



[Watch Video Solution](#)



**29.** Two metal spheres, one of radius  $R$  and the other of radius  $2R$ , both have same surface charge density  $\sigma$ . They are brought in contact and separated. What will be new surface charge densities on them ?



**Watch Video Solution**

**30.** In the circuit shown in Fig, initially  $K_1$  is closed and  $K_2$  is open . What are the charges on each capacitor.

Then  $K_1$  was opened and  $K_2$  was closed (order is important). What will be the charge on each capacitor now ? [ $C = 1\mu F$ ]



[Watch Video Solution](#)

**31.** Calculate potential on the axis of a disc of radius  $R$  due to a charge  $Q$  uniformly distributed on its surface.



[Watch Video Solution](#)

**32.** Two charges  $q_1$  and  $q_2$  are placed at  $(0,0,d)$  and  $(0,0,-d)$  respectively. Find locus of points where the potential is zero.



**Watch Video Solution**

**33.** Two charges  $-q$  each are separated by distance  $2d$ . A third charge  $+q$  is kept at midpoint  $O$ . find potential energy of  $+q$  as function of small distance  $x$  from  $O$  due to  $-q$  charges. Sketch PE Vs/ $x$  and convince yourself

that the charge at 0 is in an unstable equilibrium.



**Watch Video Solution**