



## PHYSICS

### BOOKS - PEARSON IIT JEE FOUNDATION

### MOVEMENT - AN AMAZING ACTIVITY

#### Example

1. List the similarities and differences between a fish and a bird.



Watch Video Solution

#### Very Short Answer Type Questions

1. ....is the ability of an organism to move from one place to another.



[Watch Video Solution](#)

2. Number of bones present in a leg of human being is



[Watch Video Solution](#)

3. .... System gives protection to inner delicate organs.



[View Text Solution](#)

4. ....helps in the generation of blood cells.



[View Text Solution](#)

5. The place where two bones meet is called.....



[View Text Solution](#)

6. .... is the chain of small bones joined together supporting the body.



**View Text Solution**

7. Bpmes possess.....at the end to reduce friction.



**View Text Solution**

8. Joint between humerus and radio-ulna is



**Watch Video Solution**

9. .... of birds are modified fore limbs.



**Watch Video Solution**

10. The connective tissue that connects a muscle to a bone is



[Watch Video Solution](#)

11. In cockroach arolium is helpful in:



[Watch Video Solution](#)

12. Earthworms move on smooth surface with the help of



[Watch Video Solution](#)

13. The tip of the nose is made up of .....



[View Text Solution](#)



14. The shoulder blade is called as



**Watch Video Solution**

15. Name the skeletal joint which permits movement in one direction only.



**Watch Video Solution**

16. Which of the following joints allow movement in many directions ?

A. Pivot joint

B. Hinge joint

C. Ball and socket joint

D. Gliding joint

**Answer: C**



[Watch Video Solution](#)

17. The connective tissue which mainly consists of yellow elastic fibers and binds the bones together is known as

A. Tendon

B. Ligament

C. Cartilage

D. Bone

**Answer: B**



[Watch Video Solution](#)

18. Which of these are parts of hindlimbs ?

(i) Femur

(ii) Humerus

(iii) Tarsals

(iv) Wrist

A. I and ii

B. I and iii

C. ii and iii

D. I and iv

**Answer: B**



**View Text Solution**

**19.** The only movable bone in the skull is

A. Lower jaw

B. Upper jaw

C. Cheek bone

D. Nasal bone

**Answer: A**



**Watch Video Solution**

**20.** Which animal has backbone and ribs interconnected with each other ?

A. Fish

B. Snail

C. Cockroach

D. Snake

**Answer: D**



**View Text Solution**

**21.** Birds have bones which are

A. Fish

B. Snakes

C. Birds

D. Human beings

**Answer: C**



**Watch Video Solution**

**22.** Identify the bony framework connecting the chest bone and backbone.

A. Vertabrate

B. Muscles

C. Diaphragm

D. Ribcage

**Answer: D**



[View Text Solution](#)

**23.** Where do you find the fixed joint in the human body ?

- A. Elbow
- B. Skull
- C. Knee
- D. Neck

**Answer: B**



[View Text Solution](#)

**24.** Identify the characteristics features of diatoms

- A. There pairs of legs and two pairs of wings.
- B. Two pairs of legs and three pairs of wings.

C. Three pairs of legs but no wings.

D. Two pairs of wings but no legs.

**Answer: A**



**Watch Video Solution**

**25.** The longest bone in the human body is :

A. Humerus

B. Femur

C. Radius

D. Vertebral column

**Answer: B**



**Watch Video Solution**

**26.** Lifting of hand is by the contraction of muscles.



**Watch Video Solution**

**27.** In birds, breastbones are modified to hold flight muscles and help in the movement.



**View Text Solution**

**28.** The girdle that supports hip region is called pectoral girdle.



**Watch Video Solution**

**29.** Clavicle is also known as breastbone.



**View Text Solution**



30. Endoskeleton is seen in earthworm.



[View Text Solution](#)

### Short Answer Type Questions

1. Why does your chest move up and down when you breathe ?



[View Text Solution](#)

2. Explain the role of muscles in body movemtns.



[Watch Video Solution](#)

3. Distinguish between skeleton and joint.



[View Text Solution](#)

4. Write a note on the functions of pelvic girrdle.



**View Text Solution**

5. Give the importance of vertebral column in human beings.



**Watch Video Solution**

6. Setae of erthworm helps in locomotion. Discuss.



**View Text Solution**

7. Mention the type of skeleton present in earthworm.



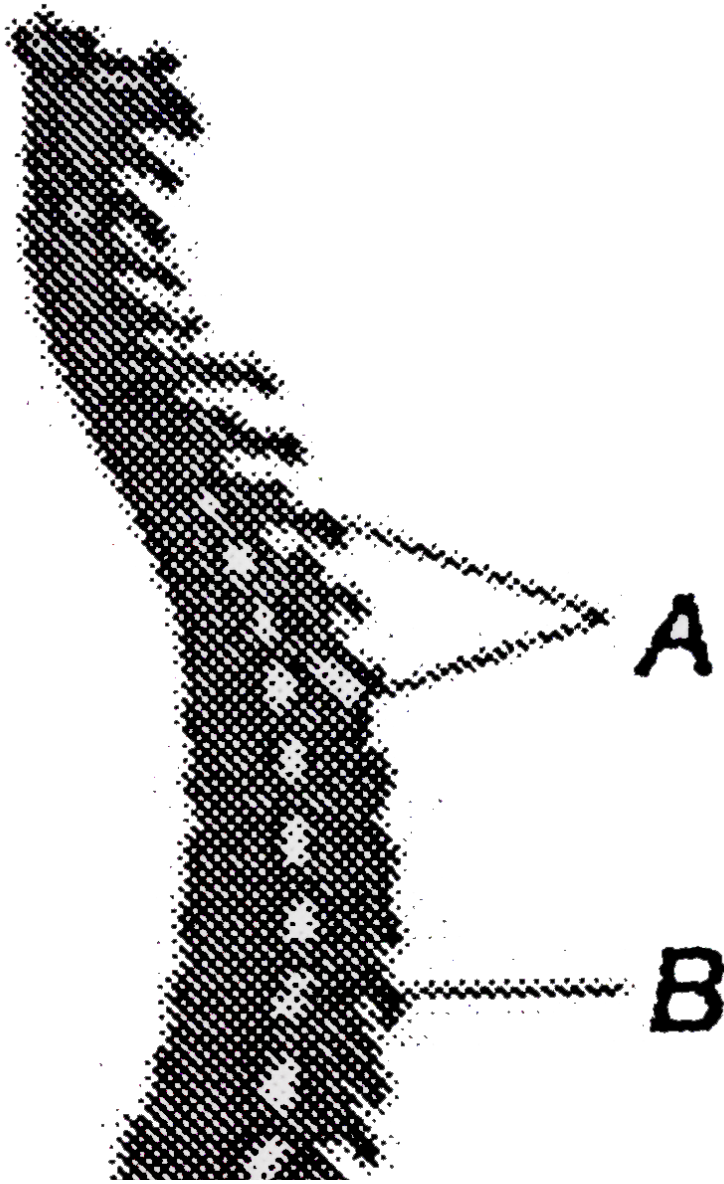
**View Text Solution**

8. Answer the question given below on the basis of the figure given.

(i) Identify the above figure and label the parts A and B.

(ii) How many small bones are present in this part ?

(iii) Identify the organ which passes through the hollow tube.





**View Text Solution**

**9. Give scientific reasons.**

Fish has a streamlined body.



**Watch Video Solution**

10. Teeth are not considered as bones.



Watch Video Solution

11. Give scientific reasons.

Bones of skull are immovable.



Watch Video Solution

12. Spinal cord is the most vital part in human body.



View Text Solution

## Concept Application

1. पसलियों की अन्तिम दो युग्मों को फ्लोटिंग रिब्स कहा जाता है क्योंकि



Watch Video Solution

2. Why do snakes move in zigzag manner ?



[View Text Solution](#)

3. What is the role of biceps and triceps in lifting weight ?



[View Text Solution](#)

4. Physical exercise help in keeping our bones healthy.



[Watch Video Solution](#)

5. The number of bones in an adult is less than that in an infant.



[View Text Solution](#)

6. When a fracture occurs, bones heal naturally without any treatment.



[View Text Solution](#)

## Assessment Test

1. .... : Earthworm :: Foot : Snail



[View Text Solution](#)

2. Wrist : Gliding joint :: Elbow : .....



[View Text Solution](#)

3. 12 pairs : Ribs :: 33 : .....



[View Text Solution](#)

4. Skeleton : Supports :: ..... : Connects



**View Text Solution**

5. Humerus : Upper arm :: ..... : Thigh



**View Text Solution**

6. Feathers, fins, shell, foots.



**View Text Solution**

7. Femur, humerus, tibia, fibula.



**View Text Solution**



**8.** Pick the odd one out.

Elbow, knee, neck, skull.



**Watch Video Solution**

**9.** Skull, vertebral column, sternum, limbs.



**View Text Solution**

**10.** Biceps, triceps, diaphragm, knee cap.



**View Text Solution**

**11.** The pectoral girdle links the arms with vertebral column.



**View Text Solution**

12. Knee joint is the ball and socket joint.



**View Text Solution**

13. A snail moves with the help of the shell.



**View Text Solution**

14. The backbone in the earthworm helps in movement.



**View Text Solution**

15. Breaking of bones is known as fracture.



**View Text Solution**

16. Match Column I with Column II.

Column I	Column II
(A) Lower jaw in human beings	(a) Snakes
(B) Powerful chest muscles	(b) Snail
(C) Strong muscles attached to ribs	(c) Earthworm
(D) Moves by circular and longitudinal muscles	(d) Birds
(E) Foot helps in the movement	(e) Movable



[View Text Solution](#)

17. Give two examples for ball and socket joints.



[View Text Solution](#)

18. Name the bones that form pectoral, girdle in human beings.



[View Text Solution](#)

**19.** Identify the joint present in the following.

A. Knee joint

B. Ankle

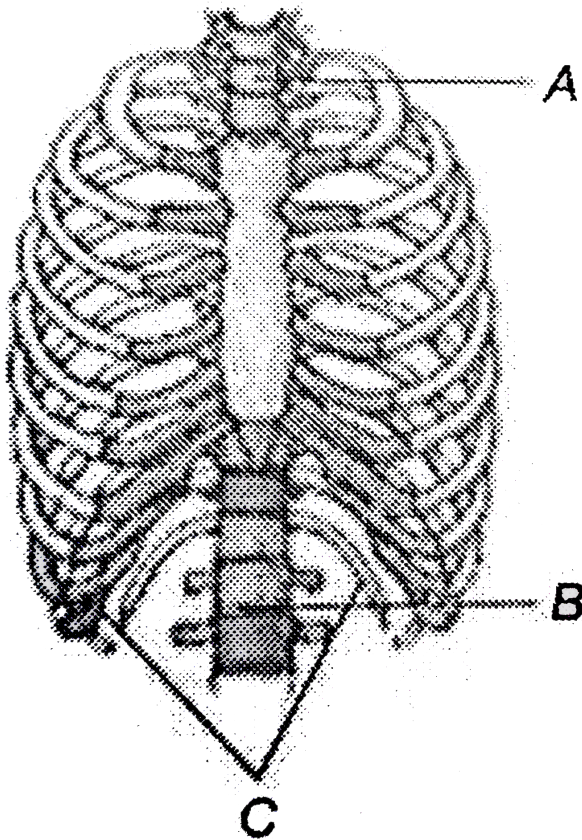
C. Between skull and spine

D. Elbow

**Answer: A**



**View Text Solution**



20.

A. Identify the above figure and label the parts A, B and C.

B. What is the number of bones in it ?

C. What is the significance of C ?

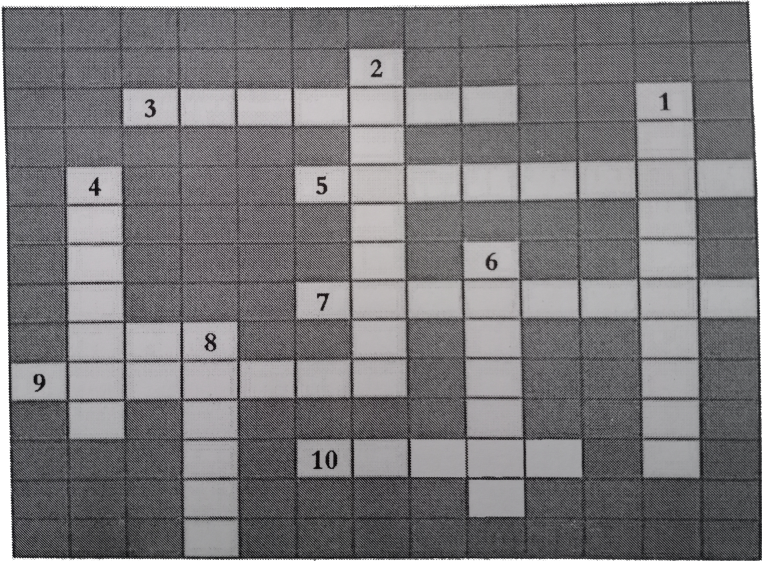
D. The given figure indicates which organ and what organs does it protect ?

Answer: A



View Text Solution

Crossword



1.

Across

- 3. Brain box
- 5. Protect spinal cord
- 7. Organs to smell in insects
- 9. Bone in upper arm
- 10. Place where two bones meet

Down

- 1. Place where blood cells originate
- 2. Fibres connecting bones to bones
- 4. Breastbone
- 6. Fibres connecting muscles to bone
- 8. Thigh bone



View Text Solution



[view Text Solution](#)