



BIOLOGY

BOOKS - CENGAGE BIOLOGY (HINGLISH)

CHEMICAL COORDINATION AND INTEGRATION

Exercise

1. Which of the following hormones is/are stored in Her ring bodies?

- A. Somatochrinin
- B. Vasopressin
- C. Oxytocin
- D. Both (2) and (3)

Answer: D



Watch Video Solution

2. Which of the following is an incorrect match?

- A. Thyroxine - Iodinated tyrosine
- B. Aldosterone - Polypeptide hormone
- C. Estrogen - Steroid hormone
- D. Thyrotropin - Glycoprotein hormone

Answer: B

 Watch Video Solution

3. Which of the following hormones prevent water loss in urine?

- A. Oxytocin
- B. Vasopressin
- C. Somatocrinin

D. Somatostatin

Answer: B



Watch Video Solution

4. Which of the following lobes of pituitary atrophies during fetal development and is smaller in adults ?

A. Pars distalis

B. Pars intermedia

C. Adenohypophysis

D. Neurohypophysis

Answer: B



Watch Video Solution

5. Which of the following anterior pituitary hormones is linked directly to body whereas other hormones mostly control other glands ?

- A. Somatotropin
- B. Somatocrinin
- C. Somatostatin
- D. Pitocin

Answer: A



[Watch Video Solution](#)

6. Which of the following pituitary hormones is known to have diabetogenic effect ?

- A. TSH
- B. LH
- C. GH

D. PRL

Answer: C



Watch Video Solution

7. Pituitary gland is lodge in a body cavity of which skull bone ?

A. Temporal

B. Occipital

C. Sphenoid

D. Parietal

Answer: C



Watch Video Solution

8. Which of the following statements is incorrect ?

- A. Pars intermedia atrophies during fetal development.
- B. Pituitary gland is lodged in sella turcica.
- C. Neurohypophysis synthesizes two hormones.
- D. Herring bodies are present in neurohypophysis.

Answer: C

 [Watch Video Solution](#)

9. Supra optic nuclei (in hypothalamus) secrete the hormone

- A. ADH
- B. Oxytocin
- C. Pitocin
- D. Both (2) and (3)

Answer: A

 [Watch Video Solution](#)

10. Which of the following hormones is secreted by corticotrophs in humans ?

A. ACTH

B. MSH

C. PRL

D. Both (1) and (2)

Answer: D



[Watch Video Solution](#)

11. Which of the following can be included under heterocrine gland ?

A. Thyroid

B. Pineal gland

C. Gonads

D. Thymus

Answer: C



[Watch Video Solution](#)

12. Which of the following technique is used to measure the hormones, their precursor, and their metabolic and products quantitatively in the living body ?

A. RIA

B. Chromatography

C. Oscilloscope

D. None of these

Answer: A



[Watch Video Solution](#)

13. Hypophysis is linked with hypothalamus through

- A. Isthmus
- B. Infundibulum
- C. Epiphysis
- D. Intermediate lobe

Answer: B



[Watch Video Solution](#)

14. Regulating hormones from hypothalamus reach adenohipophysis through

- A. Neuron
- B. Neuroendocrine cells
- C. Portal blood vessel
- D. Diffusion

Answer: C



Watch Video Solution

15. Cell type responsible for the release of MSH is

- A. Somatotroph
- B. Lactotroph
- C. Corticotroph
- D. None of these

Answer: C



Watch Video Solution

16. The disproportionate growth of bones of body parts due to the over secretion of GH after adolescence is known as

- A. Gigantism
- B. Acromegaly
- C. Dwarfism
- D. None of these

Answer: B

 [Watch Video Solution](#)

17. The primary target of the hormones of hypothalamus is

- A. Pineal gland
- B. Thymus
- C. Pituitary
- D. Testis

Answer: C

 [Watch Video Solution](#)

18. The anterior pituitary hormone that does not stimulate another endocrine gland is

- A. Somatotrophin
- B. Thyrotrophin
- C. Gonadotrophin
- D. Adrenocorticotrophin

Answer: A



Watch Video Solution

19. Luteinizing hormone (LH) in females

- A. Helps in the appearance of secondary sexual characters
- B. Stimulates ovary to secrete oestradiol
- C. Helps in release of the ovum from the ovary

D. Controls the blood pressure

Answer: C



Watch Video Solution

20. On the surgical removal of pituitary gland, there is a fall of sodium level and rise in potassium in serum. This is because

- A. Oxytocin is no longer available from pituitary
- B. Atrophy of adrenal medulla
- C. Atrophy of adrenal cortex
- D. LTH from pituitary is no longer available

Answer: C



Watch Video Solution

21. Continued secretion of milk is maintained by

A. Prolactin

B. LH

C. Relaxin

D. TSH

Answer: A



[Watch Video Solution](#)

22. Which one of the following is called as milk ejection hormone and birth hormone ?

A. Vasopressin

B. Oxytocin

C. Somatotrophic hormone

D. Pancreozymin

Answer: B



Watch Video Solution

23. Which pituitary hormone is responsible for enhancing the arterial blood pressure by causing the narrowing of arterioles ?

A. ACTH

B. Somatotropin

C. ADH

D. LTH

Answer: C



Watch Video Solution

24. The largest endocrine gland is

A. Thyroid gland

B. Adrenal gland

C. Thymus

D. Pituitary gland

Answer: A



Watch Video Solution

25. Maximum iodine is stored in

A. Parathyroid

B. Thyroid

C. Pituitary

D. All of these

Answer: B



Watch Video Solution

26. The failure of thyroid secretion from infancy leading to dwarfism and mental retardation is included under

- A. Grave's disease
- B. Cretinism
- C. Simple goiter
- D. Myxedema

Answer: B



Watch Video Solution

27. Name the non-iodinized hormone secreted by parafollicular cells of thyroid.

- A. Calcitonin
- B. Oxytocin

C. Vasopression

D. Gonadotropin

Answer: A



Watch Video Solution

28. Exophthalmic goiter is caused due to

A. Hyperthyroidism

B. Hypothyroidism

C. Hyperparathyroidism

D. Hypoparathyroidism

Answer: A



Watch Video Solution

29. Symptoms such as pot-bellied, pigeon-like chest, protrudin tongue, and mental retardation are of

- A. Myxedema
- B. Cretinism
- C. Cushing's syndrome
- D. Addison's disease

Answer: B



[Watch Video Solution](#)

30. Hormone responsible for cretinism is

- A. Thyroxine
- B. Parathormone
- C. Growth Hormone
- D. Calcitonin

Answer: A



[Watch Video Solution](#)

31. Excessive amount of calcium is regulated by

- A. Thyroxine
- B. Calcitonin
- C. Epinephrine
- D. Progesterone

Answer: B



[Watch Video Solution](#)

32. Increase in the excitability of nerves and muscles leading to sustained contraction of the muscles of larynx, face, hand and feet is due to

- A. Hyperactivity of thyroid
- B. Hyperactivity of parathyroid
- C. Hypoactivity of thyroid
- D. Hypoactivit of parathyroid

Answer: D

 [Watch Video Solution](#)

33. Hormone secrete during allergy is

- A. Glucocorticoid
- B. Mineralocorticoid
- C. Insulin
- D. Thyroxine

Answer: A

 [Watch Video Solution](#)

34. Deficiency in the activity of adrenal cortex leads to

- A. Cushing's disease
- B. Conn's syndrome
- C. Addison's disease
- D. Simmonds's disease

Answer: C



Watch Video Solution

35. One of the following symptoms pertain to Addison's disease.

- A. Low plasma Na^+ , high plasma K^+ , increased urinary Na^+ , low blood sugar, vomiting, nausea, and diarrhea.

- B. High blood sugar, obesity, wasting of limb muscles, fall in plasma K^+ , high blood Na^+ , rise in blood volume, and high blood pressure.
- C. Stunted growth, retarded sexual development, and mental backwardness.
- D. Increased heart beat, rise in blood pressure, nervousness, bulging eyes, and warm skin.

Answer: A



Watch Video Solution

36. Adrenal virilism results to

- A. Poor secretion of sex corticoids
- B. Excess secretion of sex corticoids
- C. Excess secretion of aldosterone

D. Poor secretion of aldosterone

Answer: B



[Watch Video Solution](#)

37. Secretion of aldosterone in birds, man, and other mammals is stimulated by

- A. Fall in the concentration of Na^+ in blood plasma
- B. Rise in the concentration of K^+ in blood plasma
- C. Both (1) and (2)
- D. Fall in the Ca^{++} concentration in blood plasma

Answer: C



[Watch Video Solution](#)

38. A patient who excretes large quantity of sodium in urine has

- A. Diseased adrenal medulla
- B. Diseased adrenal cortex
- C. Diseased pancreas
- D. Diseased thymus

Answer: B



[Watch Video Solution](#)

39. After receiving a hormonal shot, an asthma patient will get relief in exhaling the air. The hormone injected will be

- A. Oxytocin
- B. Adrenaline
- C. Insulin
- D. Thyroxine

Answer: B



[Watch Video Solution](#)

40. The hormones produced during emotional stress is

- A. Melatonin
- B. Thyroxine
- C. Calcitonin
- D. Adrenaline

Answer: D



[Watch Video Solution](#)

41. When the normal heart of a man is injected with physiological concentration of adrenaline, it shows

- A. Systolic arrest
- B. Decreased rate
- C. Sustained increased rate
- D. First increased then normal rate

Answer: D

 [Watch Video Solution](#)

42. The hormone somatostatin is responsible for inhibiting the motility and absorption in the digestive tract. It also inhibits the release of insulin and glucagon hormone and is released by which type of cells of pancreas ?

- A. Alpha
- B. Beta
- C. Delta
- D. F cells

Answer: C



Watch Video Solution

43. Which of the following is the function of insulin ?

- A. Promotes synthesis of fats from glucose by adipose tissue
- B. Promotes protein sythesis by promoting the uptake of amino acids
by liver and muscle cells
- C. Promotes the conversion of glucose into glycogen
- D. All of these

Answer: D



Watch Video Solution

44. The organ which was considered vestigial till recently but now confirmed to be endocrine gland is

- A. Thymus
- B. Pancreas
- C. Pineal
- D. Pituitary

Answer: C

 [Watch Video Solution](#)

45. Which of the statements is incorrect w.r.t. melatonin hormone ?

- A. Shows diurnal variation
- B. Antigonadal hormone
- C. Secreted by pineal body
- D. Poorly vascularized

Answer: D

 [Watch Video Solution](#)

46. Mammalian thymus' is mainly concerned with

- A. Regulation of body temperature
- B. Regulation of body growth
- C. Immunological functions
- D. Secretion of thyrotropin

Answer: C



[Watch Video Solution](#)

47. Which of the following glands grows to the maximum size at puberty and then diminishes gradually

- A. Thymus
- B. Pituitary
- C. Thyroid

D. Adrenal

Answer: A



[Watch Video Solution](#)

48. Relaxin is secreted by which endocrine gland ?

A. Corpus luteum

B. Pituitary

C. Pineal

D. Ovary

Answer: A



[Watch Video Solution](#)

49. Gynecomastia condition can develop due to

- A. Temporary increase in circulating estrogen in neonates
- B. Temporary increase in circulating estrogen at puberty
- C. Decreased testosterone in later life
- D. All of these

Answer: D

 [Watch Video Solution](#)

50. Placental hormone called chorionic gonadotropin (HCG) which stimulates secretion of progesterone by the ovary during pregnancy is

- A. Proteinaceous in nature
- B. Steroid in nature
- C. Biogenic amine
- D. Both (1) and (2)

Answer: D



[Watch Video Solution](#)

51. High-pitch juvenile voice in males can be retained by

- A. Ovariectomy
- B. Castration
- C. Synorchidism
- D. Eunuchoidism

Answer: B



[Watch Video Solution](#)

52. Find the odd one out with respect to the site of hormone production

- A. Epinephrine, nor -epinephrine, thyroxine
- B. FSH, STH, TSH
- C. Progesterone, testosterone, mineralocorticoid

D. Insulin, glucagon, oxytocin

Answer: B



Watch Video Solution

53. Find the odd one out.

A. Glucocorticoids, mineralocorticoids, sex corticoids

B. Nor-epinephrine, epinephrine, adrenaline

C. Relaxin, oestrogen, progestrone

D. Insulin, glucagon, thymosin

Answer: D



Watch Video Solution

54. Which of the following act as secondary messenger ?

A. cAMP

B. ATP

C. ADP

D. DNA

Answer: A



Watch Video Solution

55. Which of the following product of PIP_2 diffuses into the cytoplasm triggering the release of Ca^{2+} for intracellular calcium-mediated processes ?

A. IP_3

B. DG

C. cAMP

D. Protein kinase

Answer: A



[Watch Video Solution](#)

56. The secondary messenger which show antagonistic effect to c-AMP in heart muscle is

A. Ca^{2+}

B. Inositol triphosphate (IP_3)

C. DAG

D. c-GMP

Answer: D



[Watch Video Solution](#)

57. The hormone which acts through intracellular receptor protein is

A. Growth hormone

B. Prolactin

C. Thyroxine

D. Adrenaline

Answer: C



[Watch Video Solution](#)

58. During mechanism of action of insulin, protein kinase C is activated by

A. PIP_2

B. IP_3

C. DAG

D. Ca^{2+}

Answer: C



[View Text Solution](#)

59. Which of the following act as secondary messenger ?

A. DG

B. IP_3

C. cAMP

D. All of these

Answer: D



[Watch Video Solution](#)

60. Production, secretion, and ejection of milk requires the synergistic effects of prolactin and

A. Estrogen

B. Progesterone

C. Oxytocin

D. All of these

Answer: D



[Watch Video Solution](#)

61. Which of the following hormones is used in transplantation surgery to suppress immunity, and thus, chances of organ rejection by recipient's body is decreased ?

A. Thyroxine

B. Cortisol

C. Aldosterone

D. Steroid hormone

Answer: B



[Watch Video Solution](#)

62. Which of the following diseases is not related with hyperor hyposecretion of hormones ?

- A. IDDM
- B. NIDDM
- C. Grave's disease
- D. Gull's disease

Answer: B



[Watch Video Solution](#)

63. Mark incorrect match.

- | | | |
|-----|--------------------|--------------------------|
| A. | Hormone category | Characteristic |
| (1) | Cortisol steroid | Anti inflammatory |
| B. | Hormone category | Characteristic |
| (2) | FSH glycoprotein | second messenger is cAMP |
| C. | Hormone category | Characteristic |
| (3) | Thyroxine phenolic | Water- soluble hormone |
| D. | Hormone category | Characteristic |
| (4) | Estrogen | Lipid soluble |

Answer: C



Watch Video Solution

64. Which of the following character is not related to adrenal virilism ?

- A. Male-type external sex characters in female
- B. Deep voice
- C. Gynecomastia
- D. Appearance of beard and moustaches

Answer: C



Watch Video Solution

65. Which of the following disorder is not due to hypersecretion of a hormone ?

A. Osteitis fibrosa cystica

B. Grave's disease

C. Cushing's syndrome

D. Addison's disease

Answer: D



Watch Video Solution

66. Which of the following is an action not produced by sympathico-adrenal system ?

A. Constriction of skin and visceral smooth muscle

B. Dilation of arterioles of heart and skeleton muscles

C. Constriction of pupils

D. Dilation of bronchioles

Answer: C

 [Watch Video Solution](#)

67. Mark the second messenger in case of heart in response to parasympathetic nervous system.

A. cAMP

B. cGMP

C. IP_3

D. DG

Answer: B

 [View Text Solution](#)

68. Effect of thyroxine on B.M.R is

A. Increase

B. Decrease

C. Uncertain

D. No effect

Answer: A



Watch Video Solution

69. Neurohypophysis secretes-

A. Vasopressin and growth hormone

B. Oxytocin and estrogen

C. Vasopressin and oxytocin

D. Vasopressin and estrogen

Answer: C



Watch Video Solution

70. Adrenal cortex produces

- A. Adrenaline
- B. Epinephrine
- C. Aldosterone
- D. Calcitonin

Answer: C



[Watch Video Solution](#)

71. When parathyroid gland degenerates, which activity is disturbed ?

- A. Growth
- B. Calcium concentration
- C. Potassium concentration
- D. Sodium concentration

Answer: B



Watch Video Solution

72. Effect of prolactin hormone is on

- A. Liver
- B. Pancreas
- C. Mammary glands
- D. Bones

Answer: C



Watch Video Solution

73. Dwarfism is due to

- A. Absence of insulin

- B. Hyposecretion of GH during childhood
- C. Hyposecretion of GH during adult stage
- D. Excessive secretion of adrenaline

Answer: B



[Watch Video Solution](#)

74. Glucagon is produced by

- A. Peptic cell
- B. Oxyntic cells
- C. Alpha cells
- D. Beta cells

Answer: C



[Watch Video Solution](#)

75. The female sex hormone is

- A. Estrogen
- B. Androgen
- C. Insulin
- D. Adrenaline

Answer: A



Watch Video Solution

76. The function of thymus is

- A. Immunity
- B. Growth
- C. Formation of RBCs
- D. Emergency hormone

Answer: A



Watch Video Solution

77. Vasopressin performs

- A. Muscle contraction
- B. Increases blood pressure
- C. Decreases in blood pressure
- D. Both (1) and (2)

Answer: B



Watch Video Solution

78. Progesterone is secreted by

- A. Corpus luteum

B. Thyroid

C. Thymus

D. Testis

Answer: A



Watch Video Solution

79. Insulin is secreted by

A. Pituitary

B. Adrenels

C. Thyroid

D. Islets of Langerhans

Answer: D



Watch Video Solution

80. Ca^{2+} level is controlled by

- A. Thyroid
- B. Hypothalamus
- C. Pituitary
- D. Thyroid and parathyroids

Answer: D



[Watch Video Solution](#)

81. Which of the following is not secreted by pituitary gland

- A. Thyroxine
- B. FSH
- C. GH
- D. ACTH

Answer: A



Watch Video Solution

82. Iodine is present in the secretion of

- A. Adrenal
- B. Thyroid
- C. Pancreas
- D. Pituitary

Answer: B



Watch Video Solution

83. Which is correct

- A. Glucagon and insulin are secreted by same cells

B. Glucagon and insulin are secreted by different cells.

C. Glucagon and insulin are secreted by different cells and have opposite effect.

D. None of the above

Answer: C

 [Watch Video Solution](#)

84. Which is gland is often referred in connection with AIDS ?

A. Thymus

B. Thyroid

C. Adrenal

D. Pancreas

Answer: A

 [Watch Video Solution](#)

85. A temporary endocrine gland formed in ovary after ovulation is

- A. Corpus uteri
- B. Corpus albicans
- C. Corpus callosum
- D. Corpus luteum

Answer: D



[Watch Video Solution](#)

86. Endocrine gland for combating emergency is

- A. Adrenal cortex
- B. Adrenal medulla
- C. Pancreas

D. Parathyroid

Answer: B



[Watch Video Solution](#)

87. Glucagon produced by α -cells of islets of Langerhans

- A. Converts glucose to glycogen
- B. Converts glycogen to glucose
- C. Decreases concentration of glucose in blood
- D. None of these

Answer: B



[Watch Video Solution](#)

88. Basal metabolic rate is under control of

- A. Glucagon
- B. Insulin
- C. Thyroxine
- D. Both (1) and (2)

Answer: C

 [Watch Video Solution](#)

89. Hormones involved in carbohydrate metabolism are

- A. Insulin, glucagon, epinephrine, and parathormone
- B. Insulin, glucagon, epinephrine, and glucocorticoids
- C. Insulin, glucagon, glucocorticoids, and calcitonin
- D. Insulin, glucagon, nor-epinephrine, and melatonin

Answer: B

 [Watch Video Solution](#)

90. Blood calcium is increased by administration of

- A. Glucagon
- B. Thyroxine
- C. Parathormone
- D. Calcitonin

Answer: C



Watch Video Solution

91. Parathormone deficiency causes

- A. Goiter
- B. Hypocalcemia
- C. Hypercalcemia

D. All of the above

Answer: B



Watch Video Solution

92. Which hormone facilitates child birth/parturition ?

A. Oxytocin

B. FSH

C. LH

D. Prolactin

Answer: A



Watch Video Solution

93. Insulin is a/an

- A. Vitamin
- B. Proteinaceous hormone
- C. Amine hormone
- D. Steroid

Answer: B

 [Watch Video Solution](#)

94. FSH is involved in

- A. Ovulation
- B. Spermatogenesis
- C. Control of blood sugar
- D. Growth

Answer: B

 [Watch Video Solution](#)

95. GH controls growth through

A. rRNA

B. tRNA

C. mRNA

D. None of the above

Answer: C



[Watch Video Solution](#)

96. Thyroxine is

A. Vitamin

B. Enzyme

C. Hormone

D. Excretory product

Answer: C



Watch Video Solution

97. Hormone is a /an

A. Enzyme

B. Chemical messenger

C. Excretory product

D. Glandular secretion

Answer: B



Watch Video Solution

98. Pituitary gland is found in

- A. Trachea
- B. Abdomen
- C. Gonads
- D. Brain

Answer: D

 [Watch Video Solution](#)

99. Thyrocalcitonin

- A. Elevates K^+ level in blood
- B. Lowers Ca^{++} level in blood
- C. Elevates Ca^{2+} level in blood
- D. None of the above

Answer: B

 [Watch Video Solution](#)

100. Hormone connected with increase rate if gluconeogenesis, blood pressure and heart beat is

- A. Insulin
- B. Glucagon
- C. Adrenaline
- D. FSH

Answer: C



Watch Video Solution

101. Removal or absence of thymus in early life shall bring about

- A. Lack of lymphocytes
- B. Lack of antibodies
- C. Lack of lymph nodes

D. All the above

Answer: A



[Watch Video Solution](#)

102. Which one controls the secretion of oestrogen

A. HCG

B. Progesterone

C. LH

D. FSH

Answer: D



[Watch Video Solution](#)

103. Adrenal gland is derived from

- A. Ectoderm
- B. Mesoderm
- C. Endoderm
- D. Both (1) and (3)

Answer: A

 [Watch Video Solution](#)

104. Removal of thymus gland in the early life of an experimental mammal will cause

- A. Lack of lymphocytes
- B. Lack of antibodies
- C. Lack of lymph nodes and lymph vessels
- D. All of the above

Answer: A



[Watch Video Solution](#)

105. The hormones controlling secondary sexual characters include

- A. Thyroxine
- B. FSH and LH
- C. GH and FSH
- D. Testosterone and estrogen

Answer: D



[Watch Video Solution](#)

106. Endocrine gland responsible for immunity is

- A. Pineal
- B. Thymus
- C. Pituitary

D. Adrenal

Answer: B



[Watch Video Solution](#)

107. Which hormone promotes cell division , protein synthesis and bone growth

A. ADH

B. ACTH

C. PTH

D. GH

Answer: D



[Watch Video Solution](#)

108. Which of the following takes part in salt balancing?

- A. Mineralocorticoid
- B. Glucocorticoid
- C. Somatotrophin
- D. None

Answer: A



Watch Video Solution

109. Which one exclusively comprises endocrine glands

- A. Pituitary, salivary, adrenals, ovary, testis
- B. Pituitary, thyroid, adrenals, ovary, testis
- C. Salivary, thyroid, adrenals, ovary, testis
- D. Adrenels, ovary, testis, salivar, liver

Answer: B



[Watch Video Solution](#)

110. Thyroxin is secreted by which gland ?

- A. Adrenel
- B. Parathyroid
- C. Pituitary
- D. Thyroid gland

Answer: D



[Watch Video Solution](#)

111. Thymosin stimulates

- A. Milk secretion

B. Erythrocytes

C. T-lymphocytes

D. Melanocytes

Answer: C



Watch Video Solution

112. Which gland is concerned with salt equilibrium in body

A. Anterior pituitary

B. Pancreas

C. Adrenal

D. Thyroid

Answer: C



Watch Video Solution

113. Steroid hormones

- A. have only cell surface receptors
- B. are lipophobic
- C. act through altering the activity of proteins in the target cell
- D. are produced by only adrenal cortex

Answer: C



Watch Video Solution

114. A temporary endocrine gland formed in ovary after ovulation is

- A. Corpus callosum
- B. Corpus albicans
- C. Corpus luteum
- D. Corpus striata

Answer: C



Watch Video Solution

115. Insulin differs from growth hormone in the fact that it

- A. Increases activity of m-RNA and ribosomes
- B. Increases the permeability of cell membrane
- C. Affects the metabolism of fats by inducing lipogenesis
- D. Increases protein synthesis

Answer: C



Watch Video Solution

116. Melanin protects from

- A. UV rays

B. Visible rays

C. Infrared rays

D. X-rays

Answer: A



[Watch Video Solution](#)

117. Which of the following act as local messenger ?

A. Carrier protein

B. Glycoprotein

C. Phospholipid

D. Glycolipid

Answer: A



[Watch Video Solution](#)

118. Which of the following pairs correctly matches a hormone with the disease resulting from its deficiency ?

- A. Insulin-Diabetes insipidus
- B. Thyroxine - Tetany
- C. Parathyroid hormone - Diabetes mellitus
- D. Luteinizing hormone - Failure of ovulation

Answer: D



Watch Video Solution

119. Which hormone causes dilation of blood vessels, in creased oxygen consumption, and gluconeogenesis ?

- A. Adrenalin
- B. Glucagon
- C. ACTH

D. Insulin

Answer: A



Watch Video Solution

120. Sertoli cells are regulated by the pituitary hormone known as

A. Prolactin

B. LH

C. FSH

D. GH

Answer: C



Watch Video Solution

121. Which one of the following is not a secondary messenger in hormone action ?

- A. Sodium
- B. cAMP
- C. cGMP
- D. Calcium

Answer: A



[Watch Video Solution](#)

122. Insulin is secreted by

- A. α -cell of islets of Langerhans
- B. δ -cell of islets of Langerhans
- C. β -cell of islets of Langerhan
- D. Pancreatic acimar cell

Answer: B



Watch Video Solution

123. ADH responsible for the reabsorption of water and reduction of urine secretion is synthesized by

- A. Posterior pituitary gland
- B. Juxtaglomerular apparatus
- C. Anterior pituitary gland
- D. Hypothalamus

Answer: D



Watch Video Solution

124. In heart cells, which of the following serves as a secondary messenger, speeding up muscle cell contraction in response to

adrenaline ?

A. cAMP

B. cGMP

C. GTP

D. ATP

Answer: A



[View Text Solution](#)

125. Which of the following endocrine gland functions as a biological clock and neurosecretory transducer ?

A. Adrenal gland

B. Thyroid gland

C. Pineal gland

D. Thymus gland

Answer: C



Watch Video Solution

126. Match the hormones in column I with their functions in column II.

Column I	Column II
(a) FSH	(i) Prepare endometrium for implantation
(b) LH	(ii) Develop female secondary Sexual characters
(c) Progesterone	(iii) Contraction of uterine wall
(d) Estrogen	(iv) Development of corpus luteum
	(v) Maturation of Graafian follicle

A. (a) - (v), (b) - (iv), (c) - (i), (d)- (ii)

B. (a) - (iii), (b) - (iv), (c) - (i), (d)- (ii)

C. (a) - (iv), (b) - (iii), (c) - (ii), (d)- (i)

D. (a) - (i), (b) - (ii), (c) - (iii), (d)- (iv)

Answer: A



Watch Video Solution

127. LH and FSH are collectively called

- A. Oxytocin
- B. Somatotrophins
- C. Luteotrophic
- D. Gonadotropin

Answer: D



[Watch Video Solution](#)

128. Mammalian thymus is mainly concerned with

- A. Regulation of body temperature
- B. Regulation of body growth
- C. Immunological functions
- D. Secretion of thyrotropin

Answer: C



Watch Video Solution

129. During emergency, which of the following hormone is secreted ?

- A. Aldosterone
- B. Thyroxine
- C. Adrenaline
- D. Calcitonin

Answer: C



Watch Video Solution

130. Prolactin is secreted by

- A. Adenohypophysis

B. Neurohypophysis

C. Adrenal cortex

D. Adrenal mudulla

Answer: A



Watch Video Solution

131. Fight and flight hormone is

A. Thyroid gland

B. Thymus gland

C. Adrenal gland

D. Parathyroid gland

Answer: A



Watch Video Solution

132. Blood pressure is controlled by

- A. Thyroid gland
- B. Thymus gland
- C. Adrenal gland
- D. Parathyroid gland

Answer: C



Watch Video Solution

133. Hormone responsible for ovulation is

- A. LH
- B. GSH
- C. Progesterone
- D. Testosterone

Answer: A



Watch Video Solution

134. Match the items in column I with those given in column II.

Column I	Column II
a. ADH	i. Pituitary
b. ACTH	ii. Mineralocorticoid
c. Aldosterone	iii. Diabetes mellitus
d. Insulin	iv. Diabetes insipidus
e. Testosterone	v. Vasodilator

A. a- I, b-iv, c-ii, d-iii, e-v

B. a-iv, b-ii, c-I, d-iii, e-v

C. a-iv, b-I, c-ii, d-iii, e-v

D. a-iv, b-I, c-iii, d-ii, e-iv

Answer: C



Watch Video Solution

135. A patient of diabetes mellitus excreted glucose in urine even when he was kept in a carbohydrate-free diet. It is because

- A. Fats are catabolized to form glucose
- B. Amino acids are catabolized in liver
- C. Amino acids are discharged in blood stream from liver
- D. Glycogen from muscles are discharged in blood stream from liver

Answer: D



[Watch Video Solution](#)

136. Placenta produces which hormone ?

- A. GH
- B. Gastrin
- C. ACTH
- D. Progesterone

Answer: D



Watch Video Solution

137. The hormone that controls the level of calcium and phosphorus in the blood is secreted by

- A. Thyroid
- B. Parathyroid
- C. Pituitary
- D. Thymus

Answer: B



Watch Video Solution

138. FSH is secreted by

- A. Adernal cortex
- B. Anterior lobe of pituitary gland
- C. Middle lobe of pituitary gland
- D. Posterior lobe of pituitary gland

Answer: B

 [Watch Video Solution](#)

139. Which hormone is responsible for maintenance of preganancy ?

- A. HCG
- B. Progesterone
- C. Estrogen
- D. Prostaglandin

Answer: B

 [Watch Video Solution](#)

140. If ADH level of blood is less, then

- A. Volume of urine increases
- B. Volume of urine decreases
- C. Volume of normal
- D. Volume of urine is unaffected

Answer: A



Watch Video Solution

141. Increased glucose level in human is called

- A. Hypoglycemia
- B. Hyperglycemia
- C. Hyposuria

D. Hypersuria

Answer: B



Watch Video Solution

142. Spermatogenesis is influenced by

A. Progesterone

B. FSH

C. TSH

D. LTH

Answer: B



Watch Video Solution

143. Hormone responsible for ovulation is

A. FSH

B. LH

C. Testosterone

D. Oestrogen

Answer: B



[Watch Video Solution](#)

144. Progesterone is secreted by

A. Corpus luteum

B. Corpus albicans

C. Corpus callosum

D. Corpus striatum

Answer: A



[Watch Video Solution](#)

145. Female hormone is

- A. Progesterone
- B. Estrogen
- C. Estradiol
- D. All of these

Answer: D



Watch Video Solution

146. Blood pressure is controlled by

- A. Thyroid gland
- B. Thymus gland
- C. Adrenal gland

D. Parathyroid gland

Answer: C



Watch Video Solution

147. The non-nutrient chemicals which acts as intercellular messengers and are produced in trace amounts are known as

A. Enzymes

B. Mucous

C. Hormones

D. None

Answer: C



Watch Video Solution

148. The effect caused by non-functioning of islets of Langerhans is

- A. Heart beat rate increase
- B. Increased BMR
- C. Hyperglycaemia
- D. Tetany

Answer: C



Watch Video Solution

149. The emergency hormone is

- A. Throxine
- B. Adrenaline
- C. Insulin
- D. Progesterone

Answer: B



Watch Video Solution

150. Parathormone induces

- A. Increase in blood sugar level
- B. Decrease in serum calcium level
- C. Increase in serum calcium level
- D. Decrease in blood sugar level

Answer: C



Watch Video Solution

151. Which one secretes fight and flight hormone ?

- A. Pituitary gland

B. Pineal gland

C. Adrenal gland

D. Thyroid gland

Answer: C



Watch Video Solution

152. The name secondary messenger is given to

A. ATP

B. Cyclic AMP

C. AMP

D. Both ATP and AMP

Answer: B



Watch Video Solution

153. The function of glucagon hormone is

- A. To increase glyconogenesis
- B. To decrease blood sugar level
- C. To release glucose from liver cells and glycogenolysis promotion
- D. To increase the absorbtion of glucose and fatty acids through cell

Answer: C



Watch Video Solution

154. Which of the following pituitary hormone is a direct action hormone

?

- A. MSH
- B. ICSH
- C. ACTH
- D. TSH

Answer: A



[Watch Video Solution](#)

155. Adrenal gland is derived from

- A. Ectoderm
- B. Mesoderm
- C. Ectoderm and mesoderm
- D. Ectoderm and endoderm

Answer: C



[Watch Video Solution](#)

156. We know that thyroxine controls metabolism body. An autoimmune disease where the body owns antibodies attack the cells of the thyroid is called

- A. Hyperthyroidism
- B. Hashimoto's disease
- C. Grave's disease
- D. Turner syndrome

Answer: B

 [Watch Video Solution](#)

157. A health disorder that results from the deficiency of thyroxine in adults and is characterized by (i) a low metabolic rate, (ii) increase in body weight, and (iii) tendency to retain water in tissues is

- A. Cretinism
- B. Myxedema
- C. Simple goiter
- D. Hypothyroidism

Answer: B



Watch Video Solution

158. Goiter can occur as a consequence of all of the following except

- A. Grave's disease
- B. Iodine deficiency
- C. Pituitary adenoma
- D. Excessive intake of exogenous thyroxine

Answer: D



Watch Video Solution

159. The hormone that increases the blood calcium level and decreases its excretion by kidneys is :

- A. insulin
- B. thyroxine
- C. calcitonin
- D. parathormone

Answer: D

 [Watch Video Solution](#)

160. Which of the following hormones does not contain a polypeptide ?

- A. Insulin
- B. Oxytocin
- C. Prostaglandin
- D. Antidiuretic hormone

Answer: C

 [Watch Video Solution](#)

161. Steroid hormones easily pass through plasma membrane by simple diffusions because by

- A. Are lipid-soluble
- B. Are water-soluble
- C. Enter through pores
- D. Contains carbon and hydrogen

Answer: A



[Watch Video Solution](#)

162. Estrogen and testosterone are steroid hormones, and most likely bind to

- A. Cytoplasmic receptors
- B. Membrane ions channels

C. Enzyme-linked membrane receptors

D. G-protein liked membrane receptors

Answer: A



[Watch Video Solution](#)

163. Which is a 32-amino-acid water-soluble peptide hormone ?

A. Gastrin

B. Calcitonin

C. Glucagon

D. Insulin

Answer: B



[Watch Video Solution](#)

164. Parathormone influences calcium absorption in the small intestine by regulating the metabolism of

- A. Vitamin C
- B. Vitamin D
- C. Vitamin B_6
- D. Enterogastrone

Answer: B



Watch Video Solution

165. Toxic agents present in food which interfere with thyroxine synthesis lead to the development of

- A. Toxic goiter
- B. Cretinism
- C. Simple goiter

D. Thyrotoxicosis

Answer: C



[View Text Solution](#)

166. Endemic goiter is a state of

- A. Increased thyroid function
- B. Normal thyroid function
- C. Decreased thyroid function
- D. Moderate thyroid function

Answer: C



[Watch Video Solution](#)

167. The hormone which regulates sleep-wake cycle in man is

- A. Oxytocin
- B. Vasopressin
- C. Thyroxine
- D. Melatonin

Answer: D

 [Watch Video Solution](#)

168. Which one of the following pairs is incorrectly matched ?

- A. Glucagon-Beta cells (Source)
- B. Somatostatin-Delta cells (Source)
- C. Corpus luteum - Relaxin (Secretion)
- D. Diabetes mellitus (Disease)

Answer: A

 [Watch Video Solution](#)

169. Which of the following is not a function of insulin ?

- A. Increases the permeability of cell membrane to glucose
- B. Increases the oxidation of glucose in the cells
- C. Initiates the conversion of glycogen to glucose
- D. Initiates the formation of helatic glycogen from excess of glucose

Answer: C



Watch Video Solution

170. Human chorionin gonadotropin is secreted by

- A. Chorion
- B. Amnion
- C. Corpus luteum

D. Placenta

Answer: D



Watch Video Solution

171. Which of the following hormones helps in the contraction of uterus during child birth ?

A. ADH

B. Androgen

C. Oxytocin

D. Glucocorticoid

Answer: C



Watch Video Solution

172. Which of the following hormones stimulates the secretion of milk from female ?

- A. LH
- B. Prolactin
- C. Oxytocin
- D. Progesterone

Answer: B



[Watch Video Solution](#)

173. Parathormone is secreted during

- A. Increased blood calcium level
- B. Decreased blood calcium level
- C. Increased blood sugar level
- D. Decrease blood sugar level

Answer: B



Watch Video Solution

174. The formation of egg and sperm is affected by`

- A. LH
- B. MSH
- C. TSH
- D. FSH

Answer: D



Watch Video Solution

175. ACTH is secreted by

- A. Thyroid gland

B. Thymus gland

C. Pituitary gland

D. Islets of Langerhans

Answer: C



Watch Video Solution

176. Study the following table and select the correct option.

Endocrine Gland	Hormone	Deficiency Disorder
<i>I. Neurohypophysis</i>	Vasopressin	Diabetes insipidus
<i>II. Adrenal cortex</i>	Corticosteroids	Addison disease
<i>III. Parathyroid gland</i>	Parathorone	Myxoedema
<i>IV. Thyroid gland</i>	Calcitonin	Acromegaly

A. II and III

B. I and II

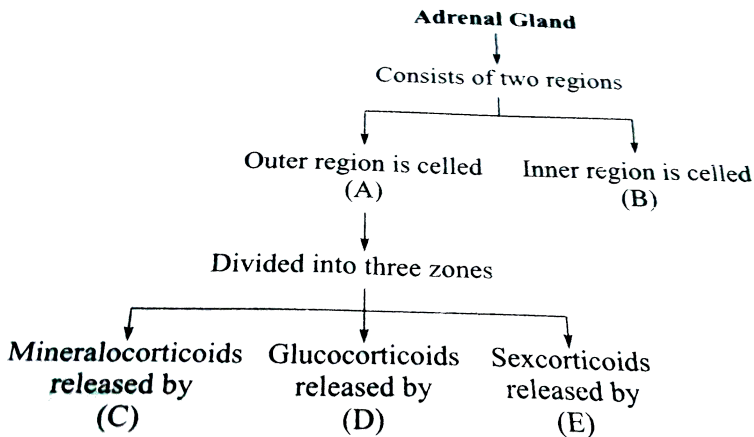
C. III and IV

D. I and IV

Answer: B

 Watch Video Solution

177. Study the given flow chart, and identify A, B, C, D and E.



A. A-Cortex, B- Medulla, C-Zona glomoerulosa, D- Zona reticulata, E-

Zona fasciculata

B. A-Cortex, B- Medulla, C-Zona glomerulosa, D- Zona fasciculata, E-

Zona reticulata

C. A-Medulla, B-Cortex , C-Zona glomoerulosa, D- Zona fasciculata , E-

Zona reticulata

D. A-Medulla, B-Cortex , C-Zona glomerulosa, D- Zona reticulata, E-

Zona fasciculata

Answer: B



Watch Video Solution

178. Mark the correct matching regarding the hormone chemical nature and function :

A.

	Hormone	Chemical nature	Function
(1)	Gonadotrophins	Steroid	Development of follicle

B.

	Hormone	Chemical nature	Function
(2)	Collip's hormone	Catecholamine	Stimulate bone resorption

C.

	Hormone	Chemical nature	Function
(3)	Somatostatin	Peptide	Stimulate secretion of G

D.

	Hormone	Chemical nature	Function
(4)	Cortisol	Steroid	Stimulate gluconeogenesis lipog

Answer: D



Watch Video Solution

179. Two hormones (a) and (b) synthesize in hypothalamus and transport in pituitary gland through (c) and (d) respectively.

A. a = oxytocin \Rightarrow c = portal circulation

b = ADH \Rightarrow d = direct release

B. a = ADH \Rightarrow c = axonal transport

b = TSHRF \Rightarrow d = portal circulation

C. a = ACTH \Rightarrow c = axonal transport

b = MSH \Rightarrow d = portal circulation

D. a = TSHRF \Rightarrow c = axonal transport

b = ADH \Rightarrow d = portal circulation

Answer: B



Watch Video Solution

180. Assertion : Diabetes insipidus is marked by excessive urination and too much thirst for water.

Reason : Anti-diuretic hormone (ADH) is released by the posterior lobe of pituitary gland.

- A. If both Assertion and Reason are true and the Reason is the correct explanation of the Assertion.
- B. If both Assertion and Reason are true, but the Reason is not the correct explanation of the Assertion.
- C. If Assertion is true, but Reason is false.
- D. If both Assertion and Reason are false.

Answer: B



[Watch Video Solution](#)

181. Assertion : Insulin is not given orally.

Reason : Insulin hormone is lipid-soluble and directly enters inside the cell membrane.

- A. If both Assertion and Reason are true and the Reason is the correct explanation of the Assertion.
- B. If both Assertion and Reason are true, but the Reason is not the correct explanation of the Assertion.
- C. If Assertion is true, but Reason is false.
- D. If both Assertion and Reason are false.

Answer: C



[Watch Video Solution](#)

182. Assertion : Chorionic gonadotrophin prevents corpus luteum from involuting.

Reason : It has the property similar to luteinizing hormone.

- A. If both Assertion and Reason are true and the Reason is the correct explanation of the Assertion.
- B. If both Assertion and Reason are true, but the Reason is not the correct explanation of the Assertion.
- C. If Assertion is true, but Reason is false.
- D. If both Assertion and Reason are false.

Answer: A



[Watch Video Solution](#)

183. Assertion : Thyroxine shows calorogenic effect.

Reason : Thyroxine shows calorogenic effect.

Reason : Thyroxine increases catabolism, produces energy and increases body temperature.

- A. If both Assertion and Reason are true and the Reason is the correct explanation of the Assertion.
- B. If both Assertion and Reason are true, but the Reason is not the correct explanation of the Assertion.
- C. If Assertion is true, but Reason is false.
- D. If both Assertion and Reason are false.

Answer: A



[Watch Video Solution](#)

184. Assertion : Inhibin is secreted by the corpus luteum.

Reason : They inhibit the FSH and GnRH production.

- A. If both Assertion and Reason are true and the Reason is the correct explanation of the Assertion.
- B. If both Assertion and Reason are true, but the Reason is not the correct explanation of the Assertion.
- C. If Assertion is true, but Reason is false.
- D. If both Assertion and Reason are false.

Answer: B



Watch Video Solution

185. Assertion : Adrenal gland have dual origin.

Reason : The aderenal cortex develops from endoderm while adrenal medulla develops from mesoderm.

- A. If both Assertion and Reason are true and the Reason is the correct explanation of the Assertion.

B. If both Assertion and Reason are true, but the Reason is not the correct explanation of the Assertion.

C. If Assertion is true, but Reason is false.

D. If both Assertion and Reason are false.

Answer: C

 [Watch Video Solution](#)

186. Assertion : Vasopression is also called as antidiuretic hormone.

Reason : Vasopressin reduces the loss of water in urine by increasing water reabsorbtion in nephrons.

A. If both Assertion and Reason are true and the Reason is the correct explanation of the Assertion.

B. If both Assertion and Reason are true, but the Reason is not the correct explanation of the Assertion.

C. If Assertion is true, but Reason is false.

D. If both Assertion and Reason are false.

Answer: A

 [Watch Video Solution](#)

187. Assertion : Oxytocin is also known as anti-diuretic hormone (ADH).

Reason : Oxytocin can cause an increase in the renal reabsorption of water.

- A. If both Assertion and Reason are true and the Reason is the correct explanation of the Assertion.
- B. If both Assertion and Reason are true, but the Reason is not the correct explanation of the Assertion.
- C. If Assertion is true, but Reason is false.
- D. If both Assertion and Reason are false.

Answer: D



[Watch Video Solution](#)

188. Assertion : The failure of secretion of hormone vasopressin causes diabetes mellitus in the patient.

Reason : Vasopressin reduces the volume of urine by increasing the reabsorption of water from the urine.

- A. If both Assertion and Reason are true and the Reason is the correct explanation of the Assertion.
- B. If both Assertion and Reason are true, but the Reason is not the correct explanation of the Assertion.
- C. If Assertion is true, but Reason is false.
- D. If both Assertion and Reason are false.

Answer: D



[Watch Video Solution](#)

189. Assertion : Adrenal cortex is called the gland for "fight, fright, and flight."

Reason : The hormones adrenaline and nor-adrenaline help the body to combat against stress and emergency conditions.

- A. If both Assertion and Reason are true and the Reason is the correct explanation of the Assertion.
- B. If both Assertion and Reason are true, but the Reason is not the correct explanation of the Assertion.
- C. If Assertion is true, but Reason is false.
- D. If both Assertion and Reason are false.

Answer: D



[Watch Video Solution](#)

1. Feeling the tremors of an earthquake a scared resident of seventh floor of a multistoried building starts climbing down the stairs rapidly. Which hormone initiated this action ?

- A. Gastrin
- B. Thyroxin
- C. Adrenaline
- D. Glucagon

Answer: C



Watch Video Solution

2. A person is having problems with calcium and phosphorus metabolism in his body. Which one of the following glands may not be functioning properly ?

- A. Thyroid
- B. Parathyroid

C. Parotid

D. Pancreas

Answer: B



Watch Video Solution

3. Which part of ovary in mammals acts as an endocrine gland after ovulation ?

A. Vitelline membrane

B. Graffian follicle

C. Stroma

D. Germinal epithelium

Answer: B



Watch Video Solution

4. Which one of the following pairs of organs includes only the endocrine glands ?

- A. Thymus and testes
- B. Adrenal and ovary
- C. Parathyroid and adrenal
- D. Pancreas and parathyroid

Answer: C



[Watch Video Solution](#)

5. The blood calcium level is lowered by the deficiency of

- A. Both calcitonin and parathormone
- B. Calcitonin
- C. Parathormone
- D. Thyroxine

Answer: C



Watch Video Solution

6. In human adult females, oxytocin

- A. Stimulates pituitary to secrete vasopressin
- B. Causes strong uterine contractions during parturition
- C. Is secreted by anterior pituitary
- D. Stimulates the growth of mammary glands

Answer: B



Watch Video Solution

7. Low Ca^{++} in the body fluid may be the cause of

- A. Tetany

B. Anaemia

C. Angina pectoris

D. Gout

Answer: A



Watch Video Solution

8. What is correct to say about the hormone action in humans ?

A. The secretion of thymosin is stimulated with aging.

B. In females, FSH first binds with specific receptors on ovarian cell membrane.

C. FSH stimulates the secretion of estrogen and progesterone.

D. Glucagon is secreted by β -cells of islets of Langerhans and stimulates glycogenolysis.

Answer: B



[Watch Video Solution](#)

9. In a normal pregnant woman, the amount of total gonadotropin activity was assessed. The result expected was

- A. High levels circulating HCG to stimulate endometrial thickening.
- B. High levels of FSH and LH in uterus to stimulates endometrial thickening.
- C. High level of circulating HCG to stimulate estrogen and progesterone synthesis.
- D. High level of circulating FSH and LH in the uterus to stimulate implatation of the embryo.

Answer: C



[Watch Video Solution](#)

10. A person entering an empty room suddenly finds a snake right in front on opening the door. Which one of the following is likely to happen in his neuro-hormonal control system ?

- A. Neurotransmitters diffuse rapidly across the cleft and transmit a nerve impulse.
- B. Hypothalamus activates the parasympathetic division of brain.
- C. Sympathetic nervous system is activated releasing epinephrine and nor-epinephrine from adrenal cortex.
- D. Sympathetic nervous system is activated releasing epinephrine and nor-epinephrine from adrenal medulla.

Answer: D



[Watch Video Solution](#)

11. Which one of the following pairs of hormones are the examples of those that can easily pass through the cell membrane of the target cell and bind to a receptor inside it (mostly in the nucleus)

- A. Thyroxin, insulin
- B. somatostatin, oxytocin
- C. Cortisol, testosterone
- D. Insulin, glucagon

Answer: C



Watch Video Solution

12. Injury to adrenal cortex is not likely to affect the secretion of which one of the following ?

- A. Aldosterone
- B. Both Andostenedione and Dehydroepiandrosterone

C. Adrenaline

D. Cortisol

Answer: C



Watch Video Solution

13. Match the source gland with its respective hormone as well as the function.

A.

Source	Gland	Hormone	Function
(1)	Thyroid	Thyroxine	Regulates blood calcium level

B.

Source	Gland	Hormone	Function
(2)	Anterior pituitary	Oxytocin	Contraction of uterus muscle

C.

Source	Gland	Hormone	Function
(3)	Posterior pituitary	Vasopressin	Stimulates respiration

D.

Source	Gland	Hormone	Function
(4)	Corpus luteum	Estrogen	Supports Pregnancy

Answer: C

14. Which of the following statements is correct in relation to the endocrine system ?

- A. Organs in the body such as gastrointestinal tract, heart, kidney, and liver do not produce any hormones.
- B. Non-nutrient chemicals produced by the body in trace amount that act as intercellular messengers are known as hormones
- C. Releasing and inhibitory hormones are produced by the pituitary gland.
- D. Adenohypophysis is under direct neural regulation of the hypothalamus.

Answer: B

15. A pregnant female delivers a baby who suffers from stunted growth, mental retardation, low intelligence quotient, and abnormal skin. This is the result of

- A. Low secretion of growth hormone
- B. Cancer of the thyroid gland
- C. Over secretion of pars distalis
- D. Deficiency of iodine in diet.

Answer: D



Watch Video Solution

16. Identify the hormone with its correct matching of source and function

:

- A. Oxytocin - posterior pituitary, growth and maintenance of mammary glands.

B. Melatonin - pineal gland, regulates the normal rhythm of sleepwake cycle.

C. Progesterone- corpus-luteum, stimulation of growth and activities of female secondary sex organs.

D. Atrial natriuretic factor- ventricular will increases the blood pressure.

Answer: B



[Watch Video Solution](#)

17. Fight-or - flight reaction causes activation of :

A. the parathyroid glands, leading to increased metabolic rate.

B. the kidney, leading to suppression of renin angiotensin-aldosterone pathway.

C. the adrenal medulla, leading increased secretion of epinephrine and norepinephrine.

D. the pancreas leading to a reduction in the blood sugar levels.

Answer: C

 [Watch Video Solution](#)

18. A chemical signal that has both endocrine and neural roles is :

A. Cortisol

B. Melatonin.

C. Calcitonin

D. Epinephrine

Answer: D

 [Watch Video Solution](#)

19. Which one of the following hormones is not involved in sugar metabolism ?

A. Glucagon

B. Cortisone

C. Aldosterone

D. Insulin

Answer: C



[Watch Video Solution](#)

20. Which of the following events is not associated with ovulation in human female ?

A. L H surge

B. Decrease in estradiol

C. Full development of Graafian follicle

D. Release of secondary oocyte

Answer: B



Watch Video Solution

21. Which one of the following hormones thought synthesised elsewhere, is stored and released by the master gland ?

A. Melanocyte stimulating hormone

B. Antidiuretic hormone

C. Luteinizing hormone

D. Prolactin

Answer: B



Watch Video Solution

22. Which of the following pairs of hormones are not antagonistic (having opposite effects) to each other ?

- A. Parathormone-Calcitonin
- B. Insuline-Glucagon
- C. Aldosterone-Atrial Natriuretic Factor
- D. Relaxin- Inhibin

Answer: D



[Watch Video Solution](#)

23. Which hormones do stimulate the production of pancreatic juice and bicarbonate ?

- A. Cholecystokinin an secretin
- B. Insulin and glucagon
- C. Angiotensin and epinephrine

D. Gastrin and insulin

Answer: A



Watch Video Solution

24. Graves' disease is caused due to :

- A. Hyposecretion of adrenal gland
- B. Hypersecretion of adrenal gland
- C. Hyposecretion of thyroid gland
- D. Hypersecretion of thyroid gland

Answer: D



Watch Video Solution

25. Name a peptide hormone which acts mainly on hepatocytes, adipocytes and enhances cellular glucose uptake and utilization :

- A. Secretin
- B. Gastrin
- C. Insulin
- D. Glucagon

Answer: C



[Watch Video Solution](#)

26. The posterior pituitary gland is not a 'true' endocrine gland because

- A. It is under the regulation of hypothalamus
- B. It secretes enzymes
- C. It is provided with a duct
- D. It only stores and releases hormones

Answer: D



Watch Video Solution