



BIOLOGY

BOOKS - CENGAGE BIOLOGY (HINGLISH)

DIGESTION AND ABSORPTION

Exercises

1. Nutrition involving engulfment of whole or parts of a plant or animal in solid or liquid state is known as

A. Saprophytic

B. Holophytic

C. Holozoic

D. Autotrophic

Answer: C

 [Watch Video Solution](#)

2. Vitamins and water are included unde

A. Micronutrients or proximate principles of food

B. Micronutrients or protective principles of food

C. Macronutrients or proximate principles of food

D. Macronutrients or protective principles of food

Answer: B



[Watch Video Solution](#)

3. In coelenterates, digestion is

- A. Intracellular
- B. Extracellular
- C. Both (1) and (2)
- D. None of these

Answer: C



[Watch Video Solution](#)

4. Types of teeth in human are

- A. Homodont, lophodont, diphyodont
- B. Heterodont, selenodont, monophyodont
- C. Bunodont, thecodont, heterodon
- D. Diphyodont, heterodont, acrodont

Answer: C



[View Text Solution](#)

5. Dental formula for the monophyodont teeth of human is

A. $\frac{0021}{0021}$

B. $\frac{0003}{0003}$

C. $\frac{2120}{2120}$

D. $\frac{2121}{2121}$

Answer: A

 [Watch Video Solution](#)

6. The enamel part of tooth is secreted by

A. Odontoblast, mesoderma

B. Ameloblast, mesodermal

C. Odontblast, ectodermal

D. Ameloblast, ectodermal

Answer: D



[Watch Video Solution](#)

7. Regurgitation of food from stomach is prevented by

- A. Pyloric sphincter
- B. Cardiac sphincter
- C. Circular muscle
- D. Muscularis mucosae

Answer: B



[Watch Video Solution](#)

8. Which of the following can be taken as true stomach in ruminants

A. Rumen

B. Reticulum

C. Omasum

D. Abomasum

Answer: D



Watch Video Solution

9. The first and largest chamber in the stomach of ruminants such as cattle, buffalo, sheep, goat, and

camel is

- A. Reticulum
- B. Rumen
- C. Omasum
- D. Abomasum

Answer: B



Watch Video Solution

10. Zymogen cells or chief cells secrete

- A. HCl
- B. Mucous

C. Pepsinogen

D. Trypsin

Answer: C



Watch Video Solution

11. The HCl of gastric juice is produced by

A. Chief cells

B. Oxyntic cells

C. Goblet cells

D. Columnar cells

Answer: B



[Watch Video Solution](#)

12. Before opening into duodenum, hepatopancreatic ampulla possesses a thickening called

- A. Plicae circulares
- B. Sacculus rotundus
- C. Sphincter of Boyden
- D. Sphincter of Oddi

Answer: D



[Watch Video Solution](#)

13. Crypts of Lieberkuhn are present in

- A. Pancreas and secrete pancreatic juice
- B. Small intestine and secrete digestive enzymes
- C. Stomach and secrete dilute HCl
- D. Stomach and secrete trypsin

Answer: B



Watch Video Solution

14. Sphincter of Boyden which helps in the filling up of gall bladder is present in

- A. Ductus choledochus

B. Duct of Wirsung

C. Ampulla of Vater

D. Duct of Santorini

Answer: A



Watch Video Solution

15. The smallest part of colon and lacking mesentery is

A. Ascending

B. Descending

C. Transverse

D. Sigmoid

Answer: A

 [Watch Video Solution](#)

16. Lamina propria is associated with which part of the alimentary canal?

- A. Mucosa
- B. Submucosa
- C. Muscularis extema
- D. Serosa

Answer: A

 [Watch Video Solution](#)

17. Auerbach's plexus is present in

A. Submucosa

B. Between mucosa and submucosa

C. Between circular and longitudinal muscles of
muscularis interne

D. Between circular and longitudinal muscles of
muscularis extema

Answer: D



Watch Video Solution

18. Oblique muscle layer is present in

- A. Stomach
- B. Duodenum
- C. Colon
- D. All of these

Answer: A



Watch Video Solution

19. Brunner's glands occur in

- A. Mucosa, duodenum
- B. Mucosa, ileum
- C. Submucosa, duodenum

D. Submucosa, ileum

Answer: C

 [Watch Video Solution](#)

20. Brunner 's glands are intestinal glands and secrete

A. Mucus

B. Enzymes

C. Enzymes and mucus

D. None of these

Answer: A

 [Watch Video Solution](#)

21. Which of the following papillae are without taste buds in human tongue?

A. Circumvallate

B. Fungiform

C. Fusiform

D. Filiform

Answer: D



Watch Video Solution

22. The Ph of amylases present in saliva is

A. 6.7

B. 7.4

C. 8

D. 2.5

Answer: A



Watch Video Solution

23. Tonsils are enlargements of

A. Lymphoid tissue

B. Adenoid tissue

C. Larynx

D. Sub-lingual gland

Answer: A

 [Watch Video Solution](#)

24. One of the following ion is used for the activation of pty-alin and maltase

- A. Sodium ions
- B. Potassium ions
- C. Chloride ions
- D. None of these

Answer: C



[Watch Video Solution](#)

25. The largest gland in the human body is

A. Liver

B. Pancreas

C. Gastric gland

D. Adrenal

Answer: A



[Watch Video Solution](#)

26. Cholecystitis refers to

A. Gall bladder

B. Stomach

C. Spleen

D. Lungs

Answer: A



Watch Video Solution

27. Alkaline nature of bile is due to

A. NaCl

B. $NaHCO_3$

C. KOH

D. NaOH

Answer: B

 [Watch Video Solution](#)

28. The enzyme enterokinase helps in the conversion of

- A. Casein into paracasein
- B. Pro-rennin into rennin
- C. Trypsinogen into trypsin
- D. Proteins into peptides

Answer: C

 [Watch Video Solution](#)

29. Milk protein casein is coagulated digested by

A. Pepsin

B. Trypsin

C. Rennin

D. Both (1) and (3)

Answer: D



Watch Video Solution

30. Chyme formed in stomach is further transformed into

A. Chyle

B. Colloidal material

C. Soft solid substance

D. Fats

Answer: A



Watch Video Solution

31. Paneth cells are found in

A. Crypts of Lieberkuhn

B. Peyer 's patches

C. Islets of Langerhans

D. Gastric glands

Answer: A

 [Watch Video Solution](#)

32. In acute constipation, purgatives that are common to stimulate intestinal peristalsis and evacuation of fluid feces contain salts of

A. Sodium

B. Magnesium

C. Potassium

D. Calcium

Answer: B



Watch Video Solution

33. A prolonged constipation may cause

A. Hemorrhoids

B. Ulcers

C. Cholera

D. Dysentery

Answer: A



Watch Video Solution

34. Functional units of food absorption are

A. Crypts of Lieberkuhn

B. Peyer's patches

C. Villi

D. Brunner's glands

Answer: C

 [Watch Video Solution](#)

35. Pungent odour of faeces is due to

A. Skatole

B. Methyl mercaptan

C. Hydrogen sulphide

D. Ammonia

Answer: A



Watch Video Solution

36. Mark the odd one

A. Gastrin

B. Trypsin

C. Secretin

D. Enterocrinin

Answer: B



[Watch Video Solution](#)

37. Which one of the following hormones inhibits gastric secretion

- A. Enterogastrone
- B. GIP
- C. Both (1) and (2)
- D. Enterocrinin

Answer: C



[Watch Video Solution](#)

38. If you chew on a piece of bread long enough, it will begin to taste sweet because

- A. The sugar contents are drawn out
- B. Ptyline converts starch into maltose
- C. It does not taste sweet
- D. The taste buds are stimulated by chewing

Answer: B

 [Watch Video Solution](#)

39. Digestion is completed in

- A. Duodenum

B. Ileum

C. Stomach

D. Cloaca

Answer: B



Watch Video Solution

40. Enterocrinin acts on

A. Gall bladder

B. Intestinal glands

C. Trypsinogen

D. Gastric glands

Answer: B

 [Watch Video Solution](#)

41. Lactose is hydrolysed into

A. Glucose + Maltose

B. Glucose+ Fructose

C. Fructose

D. Glucose + Galactose

Answer: D

 [Watch Video Solution](#)

42. In small intestine, the pH value is

A. 7

B. 8

C. 8.5-9.0

D. 2.5-4.5

Answer: B



Watch Video Solution

43. The blood capillaries of intestinal villi cannot absorb

A. Glucose

B. Salts

C. Fatty acids and glycerides

D. Amino acids

Answer: C

 [Watch Video Solution](#)

44. Which of the following vegetarian meals will supply all essential amino acids in correct proportions for synthesizing human proteins?

A. Spinach and beans

B. Corn and rice

C. Beans and rice

D. Peas and beans

Answer: C

 [Watch Video Solution](#)

45. Vitamin-containing cobalt cyanide linkage is

A. A

B. B_1

C. B_6

D. B_{12}

Answer: D

 [Watch Video Solution](#)

46. Recently discovered vitamin having anti-cancer properties is

A. Vitamin B_5

B. Vitamin B_{15}

C. Vitamin B_{17}

D. Vitamin Q

Answer: C

 [Watch Video Solution](#)

47. Tonics made out of the liver are very effective in curing hnmepoietic disorder because

- A. They contain proteins
- B. They contain RBC_s
- C. They contain bile juice
- D. They contain vitamin B_{12}

Answer: D



Watch Video Solution

48. Find the odd one out

- A. Vitamin K, prothrombin
- B. Zinc, carbonic anhydrase
- C. Vitamin B_1 , paralysis

D. Sulfur, phosphatase

Answer: D

 [Watch Video Solution](#)

49. The people dependent exclusively on maize diet , are more likely to suffer from

A. Pellagra

B. Rickets

C. Beriberi

D. Pernicious anaemia

Answer: A



Watch Video Solution

50. Pernicious anaemia is caused by deficiency of vitamin

A. B_1

B. B_{12}

C. C

D. D

Answer: B



Watch Video Solution

51. A man is said to be starving when

- A. Food that he eats does not meet the loss of energy
- B. Food that he eats meets the loss of energy
- C. He begins to store reserve food
- D. None of these

Answer: A



Watch Video Solution

52. The black tongue disease in dogs is associated with the deficiency of

- A. Menadione
- B. Niacin

C. Retinol

D. Calciferol

Answer: B



Watch Video Solution

53. Maximum number of teeth in a eutherian mammal is

A. 50, Opossum

B. 44, Horse

C. 36, Lemur

D. 34, Kangaroo

Answer: A



[Watch Video Solution](#)

54. Canines are completely absent in

A. Rabbit

B. Squirrel

C. Rat

D. All of these

Answer: D



[Watch Video Solution](#)

55. Which of the following is present in the saliva of all mammals?

- A. Mucin
- B. Salivary amylase
- C. Diastase
- D. Amylopsin

Answer: A



Watch Video Solution

56. Which of the following statements are incorrect with regard to deglutition

- A. The first buccal phase of deglutition is voluntary
- B. Larynx rises
- C. Epiglottis closes off the trachea
- D. None of these

Answer: D



Watch Video Solution

57. The substances which increase biliary synthesis from liver e.g. bile salts are called as

- A. Choloretic
- B. Cholagogues

C. Chloragogen

D. Cholecystokinin-Pancreozymin

Answer: A

 [Watch Video Solution](#)

58. Which of the following digestive enzyme coagulates blood by hydrolyzing fibrinogen to fibrin? It also helps predatory mammals to digest the blood they drink from their prey

A. Pepsin

B. Trypsin

C. Thrombin

D. Carboxypeptidase

Answer: B

 [Watch Video Solution](#)

59. In sodium-dependent glucose transport, i.e., symport or co-transport

A. Na^+ is transported passively from the lumen into the gut, glucose is transported against concentration gradient

B. Na^+ and glucose both are transported actively into the gut from lumen

C. Na^+ and glucose both are transported passively

D. Na^+ is transported actively and glucose passively

Answer: A

 [Watch Video Solution](#)

60. Which statement is not true regarding the digestive system of frog?

A. Oxyntic cells are present in stomach

B. Small intestine is made up of two parts: duodenum and ileum

C. A large number of true villi are present with ileum

D. The function of rectum is to absorb water

Answer: C

 [View Text Solution](#)

61. Vermiform appendix is present in

(a) Frog

(b) Rabbit

(c) Human

A. (c) only

B. (b) and (c) only

C. (a) and (b) only

D. All three

Answer: B



Watch Video Solution

62. The infection by a protozoan such as Entamoeba can lead to colitis which is characterized by

- A. Loose motion
- B. Bloody feces
- C. Dehydration
- D. All of these

Answer: D



Watch Video Solution

63. Which of the following can be taken as provitamins

A. Ergosterol

B. Carotene

C. Calciferol

D. Both (1) and (2)

Answer: D



Watch Video Solution

64. Which of the following can be taken as isotelic vitamins?

A. Thiamine and phylioquinone

B. Calciferol and niacin

C. Phylloquinone and menadione

D. Retinol and riboflavin

Answer: C



Watch Video Solution

65. People recovering from long illness are often advised to include the alga *Spirulina* in their diet because it:

A. Makes the food easy to digest

B. Is rich in protein and vitamin B_{12}

C. Has antibiotic properties

D. Restores the intestinal flora

Answer: B

 [Watch Video Solution](#)

66. Which one of the following pairs is not correctly matched

- A. Vitamin C-Scurvy
- B. Vitamin B_2 -Pellagra
- C. Vitamin B_{12} -Pernicious anemia
- D. Vitamin B_6 -Beri-beri

Answer: D

 [Watch Video Solution](#)

67. Cells of the pancreas are not digested by their own enzymes because

- A. Enzymes are secreted in inactive form
- B. Cells are lined by mucous membrane
- C. Enzymes are released only when needed
- D. None of the above

Answer: A

 [View Text Solution](#)

68. Cholecystokinin is secretion of

- A. Duodenum that causes contraction of gall bladder
- B. Goblet cells of ileum the stimulate secretion of succus entericus
- C. Liver and controls secondary sex characters
- D. Stomach that stimulates pancreas to release juice

Answer: A



Watch Video Solution

69. Enzyme trypsinogen is changed to trypsin by

A. Gastrin

B. Enterogastrone

C. Enterokinase

D. Secretin

Answer: C



Watch Video Solution

70. Castle's intrinsic factor is connected with internal absorption of

A. Pyridoxine

B. Riboflavin

C. Thiamine

D. Cobalaminc

Answer: D

 [Watch Video Solution](#)

71. Aminopeptidase, a digestive enzyme a produces

A. Dipeptides

B. Smaller peptides

C. Peptones

D. Amino group

Answer: B



[Watch Video Solution](#)

72. Highest B.M.R. occurs in

A. Elephant

B. Rabbit

C. Human

D. Whale

Answer: B



[Watch Video Solution](#)

73. Excessive intake of alcohol causes

- A. Jaundice
- B. Dermatitis
- C. Liver cirrhosis
- D. Lung fibroses

Answer: C



Watch Video Solution

74. Muscular contractions of alimentary canal are

- A. Circulation
- B. Deglutition
- C. Churning

D. Peristalsis

Answer: D

 [Watch Video Solution](#)

75. Vitamin D is produced in human body by

A. Muscles

B. Nerves

C. Skin

D. None of these

Answer: C

 [Watch Video Solution](#)

76. Fatty acids and glycerol are first absorbed by

- A. Lymph vessels
- B. Blood
- C. Blood capillaries
- D. Hepatic portal Vein

Answer: A

 [Watch Video Solution](#)

77. During rest, metabolic requirements are minimum. This is indicated by

- A. Pulse
- B. Breathing
- C. O_2 in take and CO_2 output
- D. All the above

Answer: D

 [Watch Video Solution](#)

78. During prolonged fasting

- A. First fats are used up, followed by carbohydrates from liver and muscles, and protein in the end

B. First carbohydrates are used up, followed by fats and proteins towards end

C. First lipids, followed by proteins and carbohydrates towards end

D. None of the above

Answer: B



[View Text Solution](#)

79. In which animal, tongue controls the temperature?

A. Rabbit

B. Dog

C. Man

D. Cow

Answer: B



Watch Video Solution

80. The largest gland in the human body is

A. Pancreas

B. Duodenum

C. Liver

D. Thyroid

Answer: C



[Watch Video Solution](#)

81. Which food substance is absorbed during digestion?

A. Carbohydrates

B. Proteins

C. Vitamins

D. Fats

Answer: C



[Watch Video Solution](#)

82. Which substance of saliva destroy harmful bacteria

A. Cerumin

B. Chyme

C. Lysozyme

D. Secret

Answer: C



View Text Solution

83. Which hormones induces secretion of succus entencus

A. Insulin

B. Secretin and cholycystokinin

C. Glucagon

D. Secretin

Answer: D

 [View Text Solution](#)

84. If the dental formula of Rabbit is $2033/1023$. What does it show

- A. Total number of teeth in rabbit is 15.
- B. Number of total incisors in rabbit is 3.
- C. Diastema is present between incisors and premolars
- D. In the formula, 2033 is for adults and 1023 is for young ones.

Answer: C



Watch Video Solution

85. Which of the following is not a disaccharide

- A. Glucose
- B. Fructose
- C. Sucrose
- D. Galactose

Answer: C



Watch Video Solution

86. Which is correct about the bile?

- A. It is synthesized by gall bladder and also stored there
- B. It is an enzyme which emulsifies the fats
- C. It contain bile salts and bile pigments
- D. Bilirubin present in it decomposes fats

Answer: C



View Text Solution

87. When all the peptide bonds of a protein have been broken down . The result would be

A. Amide

B. Oligosaccharide

C. Polypeptide

D. Amino acid

Answer: D



Watch Video Solution

88. Hydrolysis of lipid yields : —

A. Fats

B. Fatty acids and glycerol

C. Mannose and glycerol

D. Maltose and fatty acid

Answer: B

 [Watch Video Solution](#)

89. Which of the following vessel in rabbit starts with capillaries and ends in capillaries

Which one of the following vein breaks up into capillaries

A. Pulmonary artery

B. Renal vein

C. Hepatic portal vein

D. Renal artery

Answer: C



Watch Video Solution

90. Glucose and galactose unite to form

A. Maltose

B. Sucrose

C. Isomaltose

D. Lactose

Answer: D



View Text Solution

91. Dental formula in human beings is

A. $\frac{2123}{2123}$

B. $\frac{2123}{2124}$

C. $\frac{2122}{2122}$

D. $\frac{2132}{2132}$

Answer: A



Watch Video Solution

92. Vitamin C is

A. Ascorbic acid

B. Citric acid

C. Phosphoric acid

D. Glutamic acid

Answer: A

 [Watch Video Solution](#)

93. Brunner's gland are found in which of the following layers

A. Submucosa of stomach

B. Mucosa of ileum

C. Submucosa of duodenum

D. Mucosa of oesophagus

Answer: C

 [Watch Video Solution](#)

94. The chief function of bile is to :

- A. Digest fat by enzymatic action
- B. Emulsify fats for digestion
- C. Eliminate waste products
- D. Regulate digestion of proteins

Answer: B

 [Watch Video Solution](#)

95. The toxic substance are detoxicated in the human body by

A. Lungs

B. Kidney

C. Liver

D. Stomach

Answer: C



Watch Video Solution

96. Crypts of Lieberkühn are found in between the villi.

They have secrete

A. Glucagon

B. Succus entericus

C. Insulin

D. None

Answer: B



Watch Video Solution

97. Parotid salivary gland are present

A. Below the tongue

B. Below the external auditory canal

C. Below the eye orbit

D. In the angle between two jaws

Answer: B

 [Watch Video Solution](#)

98. The end product of carbohydrate metabolism is

A. CO_2 and H_2O

B. NH_3 and CO_2

C. NH_3 and H_2O

D. CO_2

Answer: A

 [Watch Video Solution](#)

99. Pepsinogen is secreted by

A. Argentaffin cells

B. Goblets cells

C. Chief cells

D. Parietal cells

Answer: C



Watch Video Solution

100. The muscular contraction in the alimentary canal is known as

A. Systole

B. Diastole

C. Peristalsis

D. Metachronal

Answer: C



Watch Video Solution

101. How many teeth in man grows twice in life

A. 32

B. 28

C. 20

D. 12

Answer: C

 [View Text Solution](#)

102. End products of protein hydrolysis are

A. Mixture of amino acids

B. Sugars

C. Peptides

D. 25 amino acids

Answer: A

 [Watch Video Solution](#)

103. The hormone "secretin" stimulates the secretion of

A. Pancreatic juice

B. Bile juice

C. Salivary juice

D. Gastric juice

Answer: A



[View Text Solution](#)

104. Brunner's glands are present in

A. Ileum

B. Duodenum

C. Stomach

D. Oesophagus

Answer: B



View Text Solution

105. Chymotrypsinogen is produced by

A. Liver

B. Pancreas

C. Stomach

D. Duodenum

Answer: B

 [Watch Video Solution](#)

106. Scurvy disease is caused by the deficiency of vitamin

A. B complex

B. C

C. K

D. D

Answer: B

 [Watch Video Solution](#)

107. Which teeth of human are shovel-shaped and used for nibbling ,cutting and tearing

A. Canine

B. Incisor

C. Molar

D. Premolar

Answer: B



Watch Video Solution

108. HCl is secreted by which of the following cells of stomach?

- A. Chief cells
- B. Parietal cell (oxyntic cells)
- C. Peptic cells
- D. Goblet cells

Answer: B

 [Watch Video Solution](#)

109. Fatty liver syndrome is due to excessive intake of

- A. Morphine

B. Alcohol

C. Tobacco

D. Both(1) and (2)

Answer: B



View Text Solution

110. Glisson 's capsules are present in

A. Liver

B. Lung

C. Kidney

D. Stomach

Answer: A



Watch Video Solution

111. Puly cavity if teeth is linked by

- A. Odontoblast
- B. Chondroblast
- C. Osteoblast
- D. Amyloblast

Answer: A



Watch Video Solution

112. Secretion of gastric juice is controlled by

- A. Gastrin
- B. Cholecystokinin
- C. Enterogastrin
- D. None of these

Answer: A

 [Watch Video Solution](#)

113. The enzyme present in saliva is

- A. Maltase
- B. Ptyalin

C. Sucrase

D. Invertase

Answer: B



Watch Video Solution

114. The metal present in vitamin B_{12} is

A. Cobalt

B. Copper

C. Zinc

D. Magnesium

Answer: A



[Watch Video Solution](#)

115. Kupffer cells are found in

- A. Liver
- B. Pancreas
- C. Small intestine
- D. Large intestine

Answer: A



[Watch Video Solution](#)

116. Crypts of Lieberkuhn are found in

- A. Intestine
- B. Stomach
- C. Oesophagus
- D. All of these

Answer: A



Watch Video Solution

117. Succus entericus is also called

- A. Gastric juice
- B. Intestine juice
- C. Bile juice

D. Saliva

Answer: B

 [Watch Video Solution](#)

118. Dental formula of rabbit is

A. $\frac{2033}{1023}$

B. $\frac{2133}{1023}$

C. $\frac{2023}{1023}$

D. $\frac{1303}{1203}$

Answer: A

 [Watch Video Solution](#)

119. Deamination occurs in :

A. Kidney

B. Liver

C. Nephron

D. Both (I) and(2)

Answer: D



Watch Video Solution

120. Digestion of protein is completed in

A. Stomach

B. Duodenum

C. Ileum

D. Duodenum and ileum

Answer: D



Watch Video Solution

121. Enterogasterone is

A. Hormone secreted by mucosa

B. Enzyme secreted by mucosa

C. Hormone secreted by duodenal mucosa

D. Secreted by endocrine gland related to digestion

Answer: C



Watch Video Solution

122. Which one of the following hormones inhibits gastric secretion

A. Enterogasterone

B. Gastrin

C. CCK

D. PZ

Answer: A

 [Watch Video Solution](#)

123. Teeth of rabbits are

- A. Thecodont
- B. Diphyodont
- C. Heterodont
- D. All of these

Answer: D

 [Watch Video Solution](#)

124. Bile secretion is proportional to the concentration of

A. Protein

B. Fat

C. Carbohydrate

D. None of these

Answer: B



Watch Video Solution

125. Secretion of pancreatic juice is stimulated by

A. Gastrin

B. Secretin

C. Enterogastrone

D. Enterokinase

Answer: B

 [Watch Video Solution](#)

126. Just as hydrochloric acid is to pepsinogen, so is

- A. Hemoglobin oxygen
- B. Enterokinase to trypsinogen
- C. Bile juice to fat
- D. Glucagon to glycogen

Answer: B

 [Watch Video Solution](#)

127. What is the function of goblet cells?

- A. Production of enzyme
- B. Production of mucin
- C. Production of hormone
- D. Production of HCl

Answer: B



Watch Video Solution

128. Lysozymes are found in

A. In saliva and tears both

B. In tears

C. In saliva

D. In mitochondria

Answer: A



Watch Video Solution

129. Secretion of gastric juice is stopped by

A. Secretin

B. Enterogastrone

C. Enterokinin

D. Gastrin

Answer: B

 [Watch Video Solution](#)

130. Which of the following is different from other?

A. Gastrin

B. Ptyalin

C. Glucagon

D. Secretin

Answer: B

 [Watch Video Solution](#)

131. Trypsin differs from pepsin in digestion of protein

- A. Carbohydrate in alkaline medium in stomach
- B. Protein in alkaline medium in stomach
- C. Protein in acidic medium in stomach
- D. Protein in alkaline medium duodenum

Answer: D



Watch Video Solution

132. Pancreatic juice is

- A. Alkaline in nature
- B. Acidic in nature
- C. Enzymatic in nature
- D. Both acidic and alkaline in nature

Answer: A



Watch Video Solution

133. Scurvy disease is due to : —

- A. Presence of h-factor in blood
- B. Deficiency of vitamin E
- C. Virus

D. Deficiency of vitamin C

Answer: D

 [Watch Video Solution](#)

134. Vitamin *D* is called :

A. Riboflavin

B. Ascorbic acid

C. Niacin

D. Calciferol

Answer: D

 [Watch Video Solution](#)

135. From which of the following, pepsin is secreted

A. Lungs

B. Stomach

C. Salivary gland

D. Sebaceous gland

Answer: B



Watch Video Solution

136. Crypts of Lieberkuhn are involved in

A. Secretion of succus entericus

B. Secretion of rennin

C. Secretion of ptyalin

D. digestion of food

Answer: A



Watch Video Solution

137. Which one of the following vitamins can be synthesized by bacteria inside the gut

A. B_1

B. A

C. E

D. B_{12}

Answer: A



Watch Video Solution

138. Vitamin-C is mainly helpful in

A. Growth of bones

B. Formation of connective tissue

C. Treatment of anemia

D. Formation of visual pigment

Answer: B



[Watch Video Solution](#)

139. A person who is addict of alcohol gets his liver destroyed because

- A. Liver stores excess of protein
- B. Liver stores excess of fat
- C. Liver stores excess of starch
- D. Liver stores excess of glycogen

Answer: B



[Watch Video Solution](#)

140. Bilirubin and biliverdin are present in

A. Pancreatic juice

B. Saliva

C. Bile juice

D. Intestinal juice

Answer: C



View Text Solution

141. Brunner's gland are found in which of the following layers

A. Submucosa of stomach

B. Submucosa of duodenum

C. Mucosa of oesophagus

D. Mucosa of ileum

Answer: B



Watch Video Solution

142. Which of the following does not belong to vitamin B group

A. Riboflavin

B. Nicotin

C. Cyanocobalamine

D. Tocopherol

Answer: D

 [Watch Video Solution](#)

143. Deficiency of which vitamin causes night blindness

A. Vitamin C

B. Vitamin D

C. Vitamin A

D. Vitamin D

Answer: C

 [Watch Video Solution](#)

144. Certain B vitamins are

- A. Enzymes
- B. Coenzymes
- C. Hormone
- D. Digestive substance

Answer: B



Watch Video Solution

145. Deficiency of thiamine causes

A. Beri-beri

B. Rickets

C. Caries

D. Pellagera

Answer: A



Watch Video Solution

146. The anti-sterility or anti-reproductive vitamin is:

A. Vitamin B_{12}

B. Vitamin D

C. Vitamin E

D. Vitamin A

Answer: C

 [Watch Video Solution](#)

147. The longitudinal muscular folds of inner wall of stomach are called :

A. Papilla of Vater

B. Rugae

C. Villi

D. Fissure

Answer: B



[Watch Video Solution](#)

148. Phagocytic cells of liver are

- A. Dieter 's cells
- B. Kupffer 's cells
- C. Hensen cells
- D. Aciner cells

Answer: B



[Watch Video Solution](#)

149. The crypts of lieberkuhn secrete ,

A. Gastrin

B. Rennin

C. Cholecystikin

D. Succus entricus

Answer: D



Watch Video Solution

150. The amount of gastric juice secreted per day from man's stomach is about

A. 500-1000 mL

B. 2000-3000 mL

C. 100-500 mL

D. 10-15 mL

Answer: A

 [Watch Video Solution](#)

151. In adults the deficiency of vitamin D causes :

A. Rickets

B. Beri-beri

C. Scurvy

D. Osteomalacia

Answer: A



[Watch Video Solution](#)

152. The function of enterogasterone hormone is

- A. Control excretion
- B. Inhibit gastric juice secretion
- C. Regulate the absorption of food
- D. Stimulate gastric glands to release gastric juice

Answer: B



[Watch Video Solution](#)

153. One of the following is not an enzyme of digestive system

- A. Enterokinase
- B. Amylase
- C. Trypsin
- D. Enterogasterone

Answer: D



Watch Video Solution

154. Secretin stimulates production of

- A. Saliva

B. Gastrin

C. Bile

D. Pancreatic juice

Answer: D



Watch Video Solution

155. Peyer's patches are found on the ileum in

A. Enterokinase

B. Lymphocyte

C. Mucous

D. Trypsin

Answer: B



Watch Video Solution

156. Which teeth are absent in rabbit ' ?

- A. Incisor
- B. Canine
- C. Molar
- D. Premolar

Answer: B



Watch Video Solution

157. In mammals, carbohydrates are stored in the form of

- A. Lactic acid in muscles
- B. Glycogen in liver and muscles
- C. Glucose in liver and muscles
- D. Glycogen in liver and spleen

Answer: B



Watch Video Solution

158. The cells in the wall of intestine are stimulated to produce secretin by

- A. Cholecystokinin

B. Bile juice

C. Acid in chyme

D. Gastrin

Answer: C



Watch Video Solution

159. Types of teeth in rabbit are

A. Thecodont

B. Acrodont

C. Pleurodont

D. Homodont

Answer: A



Watch Video Solution

160. Bile is formed in

A. Gall bladder

B. Liver

C. Spleen

D. Blood

Answer: B



Watch Video Solution

161. Beri-beri, Scurvy and Rickets are respectively caused by

A. B_1 , D and C

B. B_1 , C and D

C. D, B_1 and A

D. A, D and C

Answer: B

 [Watch Video Solution](#)

162. Which of the following pair is characterised by swollen lips, thick pigmented skin of hands and legs and irritability

A. Thiamine-Beri-beri

B. Protein-Kwashiorkor

C. Nicotinamide-Pellagra

D. Iodine-Goiter

Answer: C



Watch Video Solution

163. Maximum number of enzymes occur in

A. Omnivores

B. Herbivores

C. Carnivores

D. None of the above

Answer: A

 [Watch Video Solution](#)

164. Inhibition of gastric and stimulation of gastric, pancreatic and bile secretions are controlled by hormones.

A. Gastrin, secretin, enterokinase, and CCK

B. Enterogastrone, gastrin, pancreaticozym, and CCK

C. Gastrin, enterogastrone, CCK, and pancreaticozym

D. Secretin, enterogastrone, secretin, and enterokinase

Answer: B



Watch Video Solution

165. Lacteal take part

- A. Digestion of milk
- B. Absorption of fat
- C. Digestion of lactic acid
- D. None of the above

Answer: B



Watch Video Solution

166. A dental disease characterised by mottling of teeth is due to the presence of certain chemical element in drinking water. Which of the following is that element?

A. Fluorine

B. Chlorine

C. Boron

D. Mercury

Answer: A



Watch Video Solution

167. Function of HCl in stomach is to

- A. Kill microorganisms of food
- B. Facilitate absorption of food
- C. Dissolve enzymes
- D. Activate pepsinogen to pepsin

Answer: D



Watch Video Solution

168. Contraction of gall bladder is induced by

- A. CCK
- B. PZ
- C. Secretin

D. Enterogasterone

Answer: A

 [Watch Video Solution](#)

169. Enamel of teeth is secreted by : —

A. Ameloblast

B. Odontoblast

C. Osteoblast

D. Osteoclast

Answer: A

 [Watch Video Solution](#)

170. Which is caused by deficiency of protein ?

A. Rickets

B. Scurvy

C. Kwashiorkor

D. Carotenemia

Answer: C



Watch Video Solution

171. Lactose is composed of

A. Glucose + Galactose

B. Glucose+ Fructose

C. Glucose + Glucose

D. Glucose+ Mannose

Answer: A



Watch Video Solution

172. Vitamin which induced maturation of R.B.C. : —

A. B_1

B. A

C. B_{12}

D. D

Answer: C

 [Watch Video Solution](#)

173. The lower jaw in mammals is made up of

A. Dentary

B. Maxilla

C. Premaxilla

D. Palatine

Answer: A

 [Watch Video Solution](#)

174. Secretion of gastric juice is controlled by

- A. Gastrin
- B. Enterogasterone
- C. Secretin
- D. Hepatocrinin

Answer: A

 [Watch Video Solution](#)

175. Cholecystikin and secretin are secreted by

A. Stomach

B. Ileum

C. Duodenum

D. Colon

Answer: A



Watch Video Solution

176. In stomach, after physical and chemical digestion, food is called

A. Chyme

B. Chyle

C. Amino acid

D. Bolus

Answer: A



Watch Video Solution

177. A normal human being requires how much calories per day?

A. 2500 kcal

B. 4000 kcal

C. 5000 kcal

D. 686 kcal

Answer: A

 [Watch Video Solution](#)

178. Fully digested food reaches to liver by

- A. Hepatic portal vein
- B. Hepatic artery
- C. Hepatic vein
- D. All of the above

Answer: A

 [Watch Video Solution](#)

179. Dental formula of adolescent human being before 17 years : —

A. $\frac{2122}{2122}$

B. $\frac{2123}{2123}$

C. $\frac{2102}{2102}$

D. $\frac{2023}{2023}$

Answer: A

 [Watch Video Solution](#)

180. In mammals, milk is digested by the action of

A. Rennin

B. Amylase

C. Intestinal bacteria

D. Invertase

Answer: A



View Text Solution

181. Which food should be eaten in the deficiency of rhodopsin eyes ?

A. Carrot and ripe papaya

B. Guava and banana

C. Mango and Potato

D. None

Answer: A

 [Watch Video Solution](#)

182. Which one is correctly matched?

A. Vit. E-Tocopherole

B. Vit. D-Riboflavin

C. Vit. B-Calciferole

D. Vit. A-Thiamine

Answer: A

 [Watch Video Solution](#)

183. Most abundant organic compound on earth is

- A. Protein
- B. Cellulose
- C. Lipids
- D. Steroids

Answer: B

 [Watch Video Solution](#)

184. Stool of a person is whitish grey coloured due to malfunction of which of the following organs?

A. Pancreas

B. Spleen

C. Kidney

D. Liver

Answer: D



Watch Video Solution

185. Fluoride pollution initially affects

A. Brain

B. Heart

C. Teeth

D. Kidney

Answer: C



Watch Video Solution

186. Which one of the following pairs is not correctly matched

- A. Vitamin C-Scurvy
- B. Vitamin B_2 -Pellagra
- C. Vitamin B_{12} -Pemicious anaemia
- D. Vitamin B_6 -Beri-beri

Answer: D

187. Which one of the following elements plays an important role in biological nitrogen fixation

or

Browning of cauliflower takes due to deficiency of which one of the following elements

A. Copper

B. Manganese

C. Zinc

D. Molybdenum

Answer: D





[Watch Video Solution](#)

188. Ptyalin is an enzyme of

- A. Salivary juice
- B. Pancreatic juice
- C. Intestinal juice
- D. None of these

Answer: A



[Watch Video Solution](#)

189. Injury to vagus nerve in humans is not likely to affect

A. Gastrointestinal movement

B. Pancreatic secretion

C. Cardiac movements

D. Tongue movements

Answer: D



Watch Video Solution

190. Which one of the following is the correct matching of a vitamin , its nature and its deficiency disease

A. Vitamin K- Fat-soluble-Beri -beri

B. Vitamin A- Fat-soluble- Beri -beri

C. Vitamin K- Water-soluble-Pellagra

D. Vitamin A- Fat-soluble-Night blindness

Answer: D

 **Watch Video Solution**

191. Match the column I,II,and III .Select the correct option :

Column-I	Column-II	Column-III
A. Submaxillary gland	i. Below the tongue	a. Stenson's duct
B. Sublingual gland	ii. Cheeks	b. Wharton's duct
C. Parotid gland	iii. Lower jaw	c. Bartholin's duct

A. A-i-a, B-ii-b, C-iii-c

B. A-iii-a, B-i-c, C-ii-b

C. A-ii-b, B-i-c, C-iii-a

D. A-iii-b, B-i-c, C-ii-a

Answer: D



View Text Solution

192. Choose the correct option from following tabel:

Column-I	Column-II	Column-III
A. Kupffer's cells	i. HCl	a. Bactericidal enzymes
B. B-cells	ii. Small Intes-tine	b. Activation of pro-enzymes in gastric juice
C. Oxyntic cells	iii. Liver	c. Regulation of glucose level in blood
D. Paneth cells	iv. Pancreas	d. Phagocytosis of dead cells

A. C-ii-d, B-i-c, A-iii-a, D-iv-b

B. C-i-b, D-ii-a, A-iii-d, B-iv-c

C. C-ii-b, B-i-d, C-iv-a, D-iii-c

D. A-iii-d, A-i-c, C-ii-b, D-iv-a

Answer: B



Watch Video Solution

193. Match column the correct option from table

Column-I (Sphincter)	Column-II (Location)
A. Sphincter of an internus	i. Opening of hepatopancreatic ampulla into duodenum
B. Cardiac sphincter	ii. Between duodenum and posterior stomach
C. Sphincter of Oddi	iii. Guarding the terminal part of alimentary canal
D. Ileocaecal sphincter	iv. Between oesophagus and anterior stomach
E. Pyloric sphincter	v. Between small intestine and large intestine

A. A-(iii), B-(ii), C-(iv), D-(i), E-(v)

B. A-(ii), B-(v), C-(i), D-(iv), E-(iii)

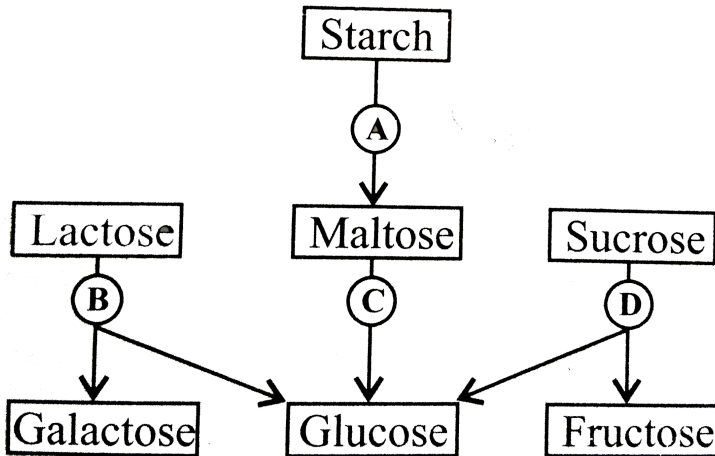
C. A-(iii), B-(iv), C-(i), D-(i), E-(ii)

D. A-(iv), B-(iii), C-(i), D-(ii), E-(v)

Answer: C

 Watch Video Solution

194. The given flowchart shows the fate of carbohydrates during digestion in the human alimentary canal. Identify the enzymes acting at stages indicated as A,B,C and D and select the correct option.



A. A-amylase, B-maltase, C- lactase. D-invertase

B. A-amylase, B-maltase, C- invertase, D- lactase

C. A-amylase, B--invertase, C-maltase, D-lactase

D. A-amylase, B-lactase, C-maltase, D--invertase

Answer: D

 **Watch Video Solution**

195. Match the column I, II and III to select the correct answer

Column I	Column II	Column III
A. Epiglottis	a. Membranous	i. Large intestine
B. Caecum	b. Diphyodont	ii. Pharynx
C. Dentition	c. Symbiotic bacteria	iii. Tongue
D. Fernulum	d. Cartilaginous flap	iv. Teeth

A. A-d-i, B-c-ii, C-b-iv, D-a-iii

B. A-d-ii, B-c-i, C-b-iv, D-a-iii

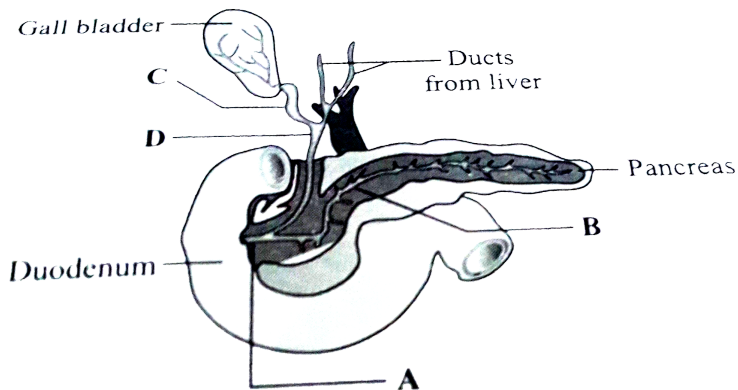
C. A-d-ii, B-b-iv, C-c-i, D-a-ii

D. A-a-iii, B-c-i, C-b-iv, D-l-ii

Answer: B

 **Watch Video Solution**

196. In the given figure, what will happen if duct D has been get blocked



A. Digestion of protein get stopped

B. No digestion of lipids in intestine

C. Less digestion of proteins (Protease) in small intestine

D. Both (2) and (3)

Answer: B



Watch Video Solution

197. Match the following:

- | | |
|--------------|---|
| A. Mucosa | (a) Bases of villi |
| B. Villi | (b) Small intestine |
| C. Submucosa | (c) Villi and rugae |
| D. Crypts | (d) Nerves, blood and lymphatic vessels |

A. A-b, B-c, C-a, D-d

B. A-a, B-l, C-b, D-c

C. A-c, B-b, C-i, D-a

D. A-b, B-c, C-i, D-a

Answer: C



Watch Video Solution

198. Which of the following controls the peristaltic movement of the intestine

A. Sacral plexus

B. Brnchiul plexus

C. Meissners plexus

D. Aucrhudts plcxus

Answer: C

 [Watch Video Solution](#)

199. Brush bordered epithelium is found in

A. Trachea

B. Stomach

C. Small intestine

D. Fallopiian tube

Answer: C

 [Watch Video Solution](#)

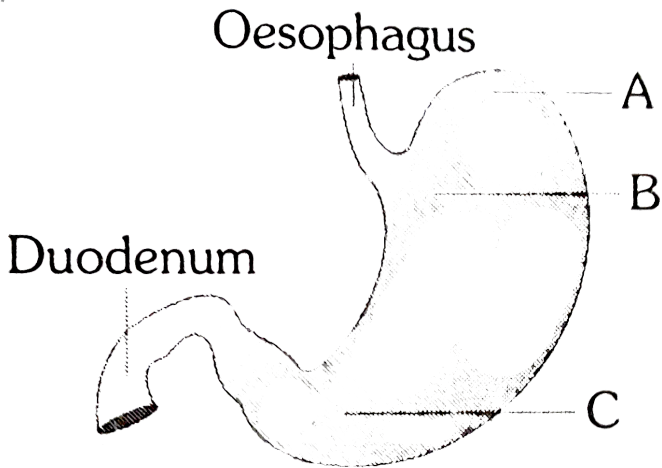
200. Vermiform appendix is a part of

- A. Alimentary canal
- B. Nervous system
- C. Vascular system
- D. Reproductive system

Answer: A

 [Watch Video Solution](#)

201. The given diagram represent anatomical region of human stomach. Identify A, B and C

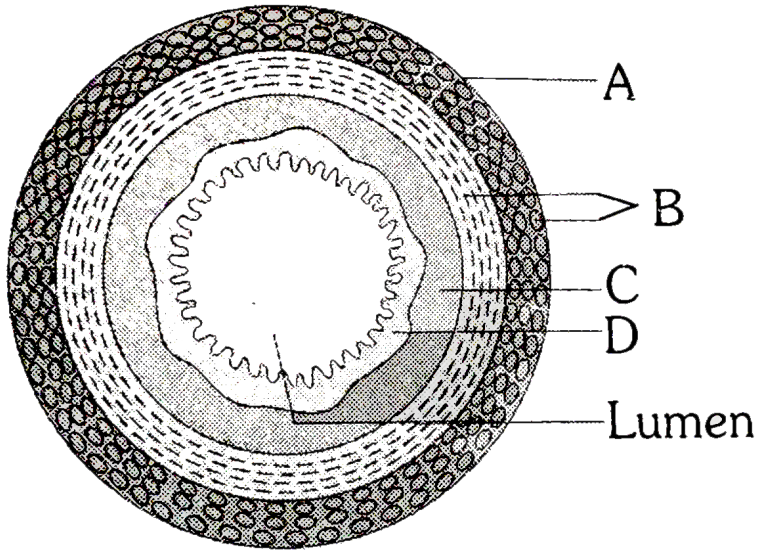


- A. A - Pyloric, B - Fundus, C - Cardiac
- B. A - Fundus, B - Cardiac, C - Pyloric
- C. A- Cardiac, B - Fundus, C - Pyloric
- D. A - Fundus, B - Pyloric, C - Cardiac

Answer: B

 [Watch Video Solution](#)

202. The given diagram inductes the TS of Gut, Identify A, B and C



A. A- Serosa, B - Submucosa, C - Muscularis, D-Mucosa

B. A- Serosa, B - Muscularis, C - Mucosa, D - Submucosa

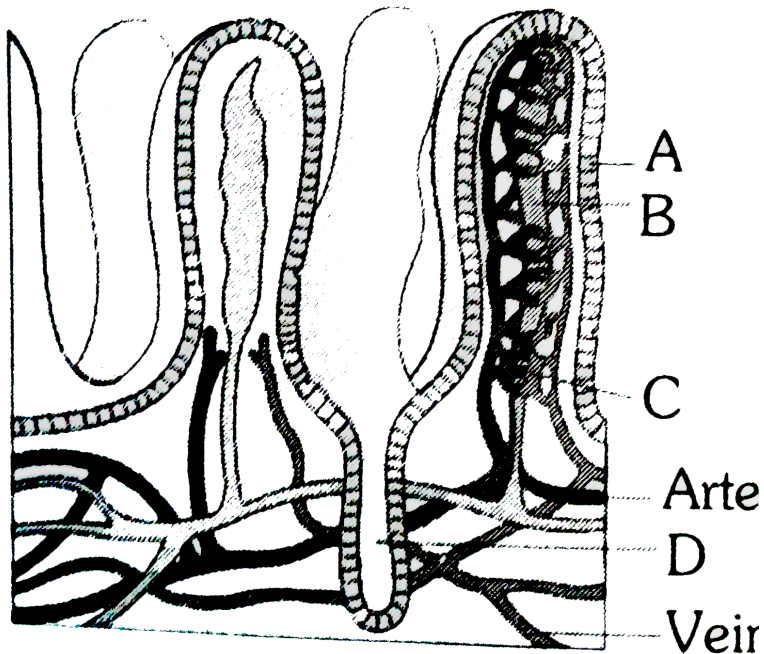
C. A- Muscularis, B - Serosa, C - Submucosa, D-Mucosa

D. A-Serosa, B-Muscularis, C-Submucosa, D-Mucosa

Answer: D

 Watch Video Solution

203. The given figure shows a section of small intestinal mucosa showing villi, Identify A to D



A. A-Crypts, B - Lacteal, C-Capillaries, D - Villi

B. A - Villi, B - Lacteal, C - Crypts, D - Capillaries

C. A- Lacteal, B - Villi, C - Capillaries, D - Crypts

D. A- Villi, B - Lacteal, C - Capillaries, D - Crypts

Answer: D



Watch Video Solution

204. The predominant antibody in saliva is

A. IgG

B. IgA

C. IgM

D. IgD

Answer: B



Watch Video Solution

205. In humans, Glisson capsule is associated with

- A. Digestive system
- B. Excretory system
- C. Nervous system
- D. Reproductive system

Answer: A



Watch Video Solution

206. Parotid salivary gland are present

- A. below the tongue
- B. below the ear
- C. below the eye orbit
- D. at the angle between two jaws

Answer: B

 [Watch Video Solution](#)

207. Match the entities of column I with column II and choose the right option from the codes given below

Column I**Column II**

- | | |
|----------------------|--|
| A. Cardiac sphincter | i. Hepatopancreatic duct |
| B. Pyloric sphincter | ii. Joins gall bladder to common bile duct |
| C. Sphincter of oddi | iii. Opening of stomach into duodenum |
| D. Cystic ducts | iv. Opening of oesophagus into stomach |

A. A B C D
iv iii i ii

B. A B C D
iv iii ii i

C. A B C D
iii iv i ii

D. A B C D
ii i iii iv

Answer: A



View Text Solution

208. Match the entities of column I with column II and select the right answer from the codes given below

Column-I**Column-II**

- | | |
|-------------------------|-------------------------------|
| A. Hepatic lobule | i. Sub-mucosal gland |
| B. Brunner's gland | ii. Base of villi |
| C. Crypts of Leiberkuhn | iii. Glisson's capsule |
| D. Sphincter of Oddi | iv. Gall bladder |
| E. Cystic duct | v. hepato—pancreatic duct |
| F. Gastric gland | vi. Parietal and mucous cells |

A. A B C D E F
iii i ii v iv vi

B. A B C D E F
iv iii i ii v iv

C. A B C D E F
iii i v ii vi iv

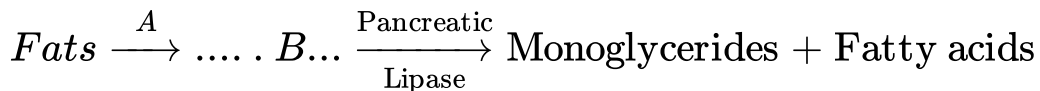
D. A B C D E F
iii i vi v iv vi

Answer: A



Watch Video Solution

209. Fill in the blanks with appropriate options to complete the given equation



A. A - Lysozyme, B - Polyglycerides

B. A - Lysozyme, B - Diglycerides

C. A- Lipase, B - Diglycerides

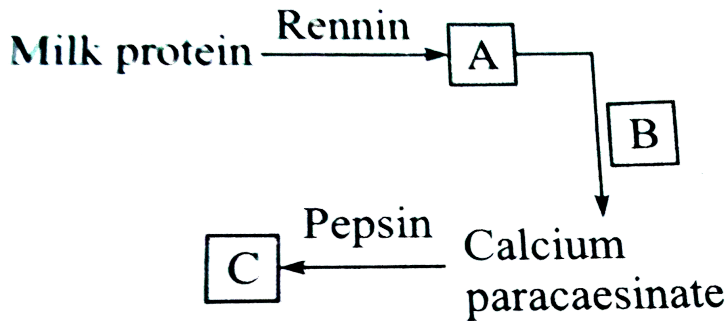
D. A- Lipase, B - Polyglycerides

Answer: C



Watch Video Solution

210. Complete the given equation and choose the correct option accordingly



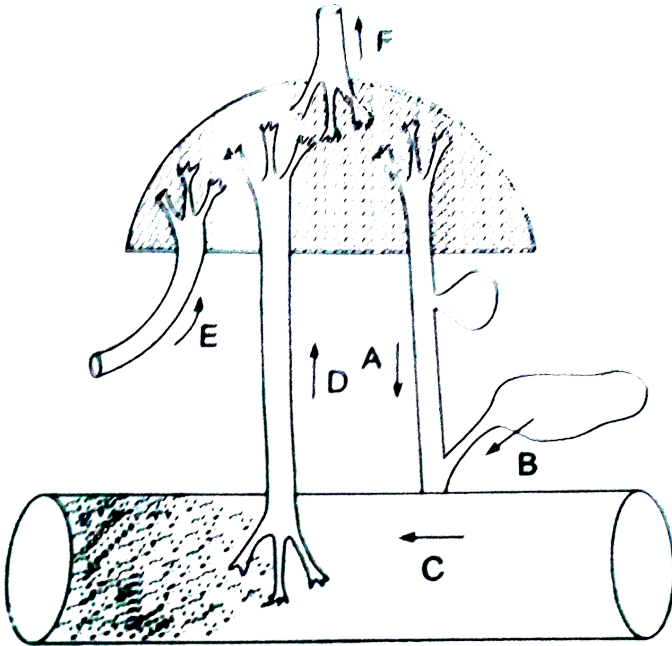
- A. A - Caesin, B - Ca^{2+} C-peptones
- B. A - Ca^{2+} , - B- Peptones, C-Caesin
- C. A- Paracasein, B - Ca^{2+} , C - Peptones
- D. A - Ca^{2+} , B - Paracasein, C - Peptones

Answer: C



Watch Video Solution

211. The diagram given below [Fig. 16.18] shows how things get to and from the liver. They are labelled as A, B, C, D, E and F. Which one of the following labellings is correct



Choose the correct option

- A. A is the hepatic portal vein and E is the hepatic vein
- B. C is the intestine and F is the hepatic portal vein

C. Dis the hepatic portal vein and F is the hepatic vein.

D. Bis the pancreatic artery and Eis the hepatic artery

Answer: C

 [Watch Video Solution](#)

212. Assertion: Gastrectomy can lead to iron-deficiency or anaemia.

Reason: HCl of gastric juice converts Fe^{3+} into Fe^{2+} which makes iron absorbable.

 [Watch Video Solution](#)

213. Assertion: Cholagogues are substances that cause the contraction of gall bladder.

Reason: These substances cause release of CCK-PZ from duodenum



[Watch Video Solution](#)

214. Assertion: Aptyalism patients have higher than normal incidences of dental caries.

Reason: Aptyalism is caused by the action of parasympathetic nervous system



[Watch Video Solution](#)

215. Assertion: In humans, the duct of Wirsung from pancreas combines with bile duct before opening into duodenum.

Reason: Blockage in the duct of Wirsung will hamper the endocrine function of pancreas



[Watch Video Solution](#)

216. Assertion: In acute constipation, purgative containing magnesium salts are generally used.

Reason: The osmotic effect of Mg^{2+} in the intestinal lumen prevents Water reabsorption from intestine. Mg^{2+} increases the solute concentration in the intestinal lumen because Mg^{2+} is absorbed very slowly



Watch Video Solution

Archives

1. Which one of the following is a fat-soluble vitamin and its related deficiency disease

- A. Ascorbic acid-Scurvy
- B. Retinol-Xerophthalmia
- C. Cobalamine-Beri-beri
- D. Calciferol-Pellagra

Answer: B



Watch Video Solution

2. Which one of the following mammalian cells is not capable of metabolising glucose to carbon-dioxide aerobically?

- A. Red blood cells
- B. White blood cells
- C. Unstriated muscle cells
- D. Liver cells

Answer: A



Watch Video Solution

3. Which of the following is the correct matchin of the site of action on the given substrate, the enzyme acting state upon it and the end product

A. Small intestine - Proteins → Pepsin → Amino acids

B. Stomach-Fats → Lipase → Micelles

C. Duodenum - Triglycerides → Trypsin → Monoglycerides

D. Small intestine - Starch → α -amylase → Disaccharide (Maltose)

Answer: D



Watch Video Solution

4. What will happen if the secretion of parietal cells of gastric glands is blocked with an inhibitor?

A. In the absence of HCl secretion, inactive pepsinogen is not converted into the active enzyme pepsin

B. Enterokinase will not be released from the duodenal mucosa and so trypsinogen is not converted to trypsin

C. Gastric juice will be deficient in chymosin

D. Gastric juice will be deficient in pepsinogen

Answer: A



5. When breast feeding is replaced by less nutritive food low in proteins and calories, the infants below the age of one year are likely to suffer from

- A. Pellagra
- B. Marasmus
- C. Rickets
- D. Kwashiorkor

Answer: B

6. A young infant may be feeding entirely on mother's milk which is white in colour but the stools which the infant passes out is quite yellowish. The yellow colour of stool is due to

- A. Pancreatic juice poured into duodenum
- B. Intestinal juice
- C. Bile pigments passed through bile juice
- D. Undigested milk protein casein

Answer: C



Watch Video Solution

7. Which one of the following statements is true regarding digestion and absorption of food in humans?

A. About 60% of starch is hydrolysed by salivary amylase in our mouth

B. Oxyntic cells in our stomach secrete the proenzyme pepsinogen

C. Fructose and amino acids are absorbed through intestinal mucosa with the help of carrier ions like Na^+

D. Chylomicrons are small lipoprotein particles that are transported from intestine into blood capillaries

Answer: C



Watch Video Solution

8. Which one of the following pairs of food components in human reaches the stomach totally undigested

- A. Starch and cellulose
- B. Protein and starch
- C. Starch and fat
- D. Fat and cellulose

Answer: D



Watch Video Solution

9. Carrier ions like Na^+ facilitate the absorption of substance like

- A. Amino acids and glucose
- B. Glucose and fatty acids
- C. Fatty acids and glycerol
- D. Fructose and some amino acids

Answer: A

 [Watch Video Solution](#)

10. If for some reason our goblet cells are non-functional, this will adversely effect

- A. Production of somatostatin
- B. Secretion of sebum from the sebaceous glands
- C. Maturation of sperms
- D. Smooth movement of food down the intestine

Answer: D



Watch Video Solution

11. Consumption of which one of the following foods can prevent the kind of blindness associated with vitamin 'A' deficiency?

- A. Canolla
- B. Golden rice

C. Bt-Brinjal

D. Flaver Savr tomato

Answer: B

 [Watch Video Solution](#)

12. Currgisis of liver is caused by the chronic intake of

A. Alcohol

B. Tobacco (chewing)

C. Cocaine

D. Opium

Answer: A



[Watch Video Solution](#)

13. Anxiety and eating spicy food together in an otherwise normal human, may lead to

- A. Jaundice
- B. Diarrhoea
- C. Vomiting
- D. Indigestion

Answer: D



[Watch Video Solution](#)

14. Two friends are eating together on a dining table. One of them suddenly starts coughing while swallowing some food. This coughing would have been due to improper movement of

- A. Tongue
- B. Epiglottis
- C. Diaphragm
- D. Neck

Answer: B



Watch Video Solution

15. The purplish red pigment rhodopsin contained in the rods type of photoreceptor cells of the human eye, is a derivative of

- A. Vitamin A
- B. Vitamin B 1
- C. Vitamin C
- D. Vitamin D

Answer: A



Watch Video Solution

16. Where do certain symbiotic microorganisms normally occur in human body

- A. Caecum
- B. Oral lining and tongue surface
- C. Vermiform appendix and rectum
- D. Duodenum

Answer: A



Watch Video Solution

17. Select the correct match of the digested products in humans given in column I with their absorption site and

mechanism in Column II

	Column I	Column II
(a)	Cholesterol, maltose	Large intestine, active absorption
(b)	Glycine, glucose	Small intestine, active absorption
(c)	Fructose, Na ⁺	Small intestine, passive absorption
(d)	Glycerol, fatty acids	Duodenum, move as chylomicrons



[Watch Video Solution](#)

18. The initial step in digestion of milk in infant is carried out by

A. Lipase

B. Trypsin

C. Rennin

D. Pepsin

Answer: C



Watch Video Solution

19. Fructose is absorbed into the blood through mucosa cells of intestine by process called

- A. active transport
- B. facilitated transport
- C. simple diffusion
- D. co-transport mechanism

Answer: B

20. Which of the following statements is not correct?

- A. Acini are present in the pancreas and secrete carboxy-peptidase
- B. Brunner's glands are present in the submucosa of stomach and secrete pepsinogen
- C. Goblet cells are present in the mucosa of intestine and secrete mucus
- D. Oxyntic cells are present in the mucosa of stomach and secrete HCl

Answer: C



[Watch Video Solution](#)

21. Gastric juice of infants contains

- A. amylase, rennin, pepsinogen
- B. maltase, pepsinogen, rennin
- C. nuclease, pepsinogen, lipase
- D. pepsinogen, lipase, rennin

Answer: D



[Watch Video Solution](#)

22. The primary dentition in human differs from permanent dentition in not having one of the following type of teeth

A. Incisors

B. Canine

C. Premolars

D. Molars

Answer: C



Watch Video Solution

23. The enzyme that is not present in succus entericus is

A. lipase

B. maltase

C. nucleases

D. nucleosidase

Answer: B



Watch Video Solution

24. In the stomach, gastric acid is secreted by the

A. gastrin secreting cells

B. parietal cells

C. peptic cells

D. acidic cells

Answer: B

 [Watch Video Solution](#)

25. Which of the following guards the opening of hepatopancreatic duct into the duodenum

- A. Semilunar valve
- B. Ileocaecal valve
- C. Pyloric sphincter
- D. Sphincter of Oddi

Answer: D



Watch Video Solution