



PHYSICS

BOOKS - HC VERMA PHYSICS (HINGLISH)

ALTERNATING CURRENT

Examples

1. The peak value of an alternating current is 5A and its frequency is 60Hz. Find its rms value. How long will the current IS 5 A and its frequency is 60 Hz. Find its rms value.

 [Watch Video Solution](#)

2. Find the reactance of a capacitor ($C = 200\mu F$) when it is connected to (a) a $10Hz AC$ source, (b) a $50Hz AC$ source and (c) a $500Hz AC$ source.

 [Watch Video Solution](#)

3. An inductor ($L = 200mH$) is connected to an AC source of peak $emf 210V$ and frequency $50Hz$. Calculate the peak current. What is the instantaneous voltage of the source when the current is at its peak value?



[Watch Video Solution](#)



Watch Video Solution

4. An LCR series circuit with $L = 100\text{mH}$, $C = 100\mu\text{F}$, $R = 120\Omega$ is connected to an AC source of $emf \varepsilon = (30\text{V})\sin(100\text{s}^{-1})t$. Find the impedance, the peak current and the resonant frequency of the circuit.



Watch Video Solution

5. A radio set operates at 6VDC . A transformer with 18 turns in the secondary coil is used to step down the input $220\text{VACemf} \rightarrow 6\text{VACemf}$. This ACemf is then rectified by another circuit to give 6VDC

which is fed to the radio. Find the number of turns in the primary.



[Watch Video Solution](#)

Worked Out Examples

1. A resistance of 20Ω is connected to a source of alternating current rated $110V, 50Hz$. Find (a) the *rms* current, (b) the maximum instantaneous current in the resistor and (c) the time taken by the current to change from its maximum value to the rms value.



[Watch Video Solution](#)

2. The current in a discharging LR circuit is given by

$$I = i_0 e^{-\frac{t}{\tau}}$$
 where τ is the time constant of the

circuit. Calculate the rms current for the period $t = 0$

to $t = \tau$.



Watch Video Solution

3. A coil having a resistance of 50.0Ω and an

inductance of 0.500henry is connected \rightarrow an AC

source of 110 volts, 50.0 cycle//s. Find the rms value

of the current in the circuit.



Watch Video Solution

4. A capacitor of capacitance $100\mu F$ and a coil of resistance 50Ω and inductance $0.5H$ are connected in series with a $110V, 50Hz AC$ source. Find the rms value of the current.



[Watch Video Solution](#)

5. A capacitor of capacitance $12.0\mu F$ is joined to an AC source of frequency $200Hz$. The rms current in the circuit is $2.00A$. (a) Find the rms voltage across the capacitor. (b) Find the average energy stored in the electric field between the plates of the capacitor.



[Watch Video Solution](#)

6. A series AC circuit contains an inductor ($20mH$), a capacitor ($100\mu F$), a resistor (50Ω) and an AC source of $12V, 50Hz$. Find the energy dissipated in the circuit in $1000s$.



[Watch Video Solution](#)

7. An inductor of inductance $100mH$ is connected in series with a resistance, a variable capacitance and an AC source of frequency $2.0kHz$. What should be the value of the capacitance so that maximum current may be drawn into the circuit?





Watch Video Solution

8. An inductor coil joined to a $6V$ battery draws a steady current of $12A$. This coil is connected to a capacitor and an AC source of rms voltage $6V$ in series. If the current in the circuit is in phase with the emf, find the rms current.



Watch Video Solution

Short Answer

1. What is the reactance of a capacitor connected to a constant DC source?



[Watch Video Solution](#)

2. The voltage and current in a series AC circuit are given by

$$V = V_0 \cos \omega t \text{ and } I = i_0 \sin \omega t.$$

What is the power dissipated in the circuit?



[Watch Video Solution](#)

3. Two alternating currents are given by

$$i_1 = i_0 \sin \omega t \text{ and } i_2 = i_0 \sin \left(\omega t + \frac{\pi}{3} \right).$$

Will the rms values of the currents be equal or different?



[Watch Video Solution](#)

4. Can the peak voltage across the inductor be greater than the peak voltage of the source in an LCR circuit?



[Watch Video Solution](#)

5. In a circuit containing a capacitor and an AC source, the current is zero at the instant the source voltage is maximum. Is it consistent with Ohm's law?



[Watch Video Solution](#)

6. An AC source is connected to a capacitor. Will the rms current increase, decrease or remain constant if a dielectric slab is inserted into the capacitor?



[Watch Video Solution](#)

7. When the frequency of the AC source in an LCR circuit equals the resonant frequency, the reactance of the circuit is zero. Does it mean that there is no current through the inductor or the capacitor?



[Watch Video Solution](#)

8. When an AC source is connected to a capacitor there is a steady-state current in the circuit. Does it mean that the charges jump from one plate to the other to complete the circuit?



[Watch Video Solution](#)

9. A current $i_1 = i_{10} \sin \omega t$ passes through a resistor of resistance R . How much thermal energy is produced in one time period? A current $i_2 = -i_0 \sin \omega t$ passes through the resistor. How much thermal energy is produced in one time period? If i_1 and i_2 both pass through the resistor simultaneously, how much thermal energy is produced? Is the principle of superposition obeyed in this case?



[Watch Video Solution](#)

10. Is energy produced when a transformer steps up the voltage?



Watch Video Solution

11. Can you have an AC series circuit in which there is a phase difference of (a) 180^0 (b) 120^0 between the emf and the current?



Watch Video Solution

12. A resistance is connected to an AC source. If a capacitor is included in the series circuit, will the

average power absorbed by the resistance increase or decrease? If an inductor of small inductance is also included in the series circuit, will the average power absorbed increase or decrease further?

 [Watch Video Solution](#)

13. Can a hot-wire ammeter be used to measure a direct current having a constant value? Do we have to change the graduation?

 [Watch Video Solution](#)

1. A capacitor acts as an infinite resistance for

A. DC

B. AC

C. DC as well as AC

D. Neither AC nor DC

Answer: A



Watch Video Solution

2. An AC source producing emf

$$\varepsilon = \varepsilon_0 [\cos(100\pi s^{-1})t + \cos(500\pi s^{-1})t]$$

is connected in series with a capacitor and a resistor.

The steady-state current in the circuit is found to be

$$I = i_1 \cos[(100\pi s^{-1}t + \varphi_1)] + i_2 \cos[(500\pi s^{-1})t + \phi_2]$$

.

A. $i_1 > i_2$

B. $i_1 = i_2$

C. $i_1 < i_2$

D. The information is insufficient to find the relation between i_1 and i_2 .

Answer: C



Watch Video Solution

3. The peak voltage in a $220V AC$ source is

A. $220V$

B. about $160V$

C. about $310V$

D. $440V$

Answer: C



Watch Video Solution

4. An AC source is rated $220V, 50Hz$. The average voltage is calculated in a time interval of $0.01s$. It

A. must be zero

B. may be zero

C. is never zero

D. is $\left(\frac{220}{\sqrt{2}}\right)V$

Answer: B



Watch Video Solution

5. The magnetic field energy in an inductor changes from maximum value to minimum value in $5.0ms$ when connected to an AC source. The frequency of the source is

A. 20 Hz

B. 50 Hz

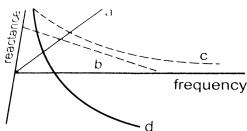
C. 200 Hz

D. 500 Hz

Answer: B

 [Watch Video Solution](#)

6. Which of the following plots may represent the reactance of a series LC combination?





Watch Video Solution

7. A series AC circuit has a resistance of 4Ω and a reactance of 3Ω . The impedance of the circuit is

A. 5Ω

B. 7Ω

C. $\frac{12}{7}\Omega$

D. $\frac{7}{12}\Omega$

Answer: A



Watch Video Solution

8. Transformers are used

- A. in DC circuits only
- B. in AC circuits only
- C. in both DC and AC circuits
- D. neither in DC nor in AC circuits

Answer: B



[Watch Video Solution](#)

9. An alternating current is given by

$$I = i_1 \cos \omega t + i_2 \sin \omega t.$$

The rms current is given by

A. $\frac{i_1 + i_2}{\sqrt{2}}$

B. $\frac{|i_1 + i_2|}{\sqrt{2}}$

C. $\sqrt{\frac{i_1^2 + i_2^2}{2}}$

D. $\sqrt{\frac{i_1^2 + i_2^2}{\sqrt{2}}}$

Answer: C



Watch Video Solution

10. An alternating current having peak value $14A$ is used to heat a metal wire. To produce the same heating effect, a constant current i can be used where i is

A. $14A$

B. about $20A$

C. $7A$

D. about $10A$

Answer: D



Watch Video Solution

11. A constant current of $2.8A$ exists in a resistor. The rms current is

A. $2.8A$

B. about $20A$

C. $1.4A$

D. undefined for a direct current

Answer: A



Watch Video Solution

Objective 2

1. An inductor, a resistor and a capacitor are joined in series with an AC source. As the frequency of the

source is slightly increased from a very low value, the reactance

- A. of the inductor increases
- B. of the resistor increases
- C. of the capacitor increases
- D. of the circuit increases

Answer: A



Watch Video Solution

2. The reactance of a circuit is zero. It is possible that the circuit contains

- A. an inductor and a capacitor
- B. an inductor but no capacitor
- C. a capacitor but no inductor
- D. None of the Above

Answer: A

 [Watch Video Solution](#)

3. In an AC series circuit, the instantaneous current is zero when the instantaneous voltage is maximum. Connected to the source may be a

- A. pure inductor

B. pure capacitor

C. pure resistor

D. combination of an inductor and a capacitor

Answer: A::B::D



Watch Video Solution

4. An inductor-coil having some resistance is connected to an AC source. Which of the following quantities have zero average value over a cycle?

A. Current

B. Induced emf in the inductor

C. Joule heat

D. Magnetic energy stored in the inductor

Answer: A::B::D



Watch Video Solution

5. The AC voltage across a resistance can be measured using

A. a potentiometer

B. a hot-wire voltmeter

C. a moving-coil galvanometer

D. a moving magnet galvanometer

Answer: B



Watch Video Solution

6. To convert mechanical energy into electrical energy, one can use

A. DC dynamo

B. AC dynamo

C. motor

D. transformer

Answer: A::B::D



Watch Video Solution

7. An AC source rated $100V(rms)$ supplies a current of $10A(rms)$ to a circuit. The average power delivered by the source

- A. must be $1000W$
- B. may be $1000W$
- C. may be greater than $1000W$
- D. may be less than $1000W$

Answer: B::D



Watch Video Solution

Exercises

1. Find the time required for a $50Hz$ alternating current to change its value from zero to the rms value.



Watch Video Solution

2. The household supply of electricity is at $220V$ (rms value) and $50Hz$. Find the peak voltage and the least

possible time in which the voltage changes from the rms value to zero.

 [Watch Video Solution](#)

3. A bulb rated $60W$ at $220V$ is connected across a household supply of alternating voltage of $220V$. Calculate the maximum instantaneous current through the filament.

 [Watch Video Solution](#)

4. An electric bulb is designed to operate at $12V$ *sDC*. If this bulb is connected to an AC

source and gives normal brightness, what would be the peak voltage of the source?



[Watch Video Solution](#)

5. The peak power consumed by a resistive coil when connected to an AC source is $80W$. Find the energy consumed by the coil in 1000 seconds which is many times larger than the time period of the source.



[Watch Video Solution](#)

6. The dielectric strength of air is $3.0 \times 10^6 \frac{V}{m}$. A parallel-plate air-capacitor has area $20cm^2$ and plate

separation 0.10mm . Find the maximum rms voltage of an AC source which can be safely connected to this capacitor.



[Watch Video Solution](#)

7. The current in a discharging LR circuit is given by $I = i_0 e^{-\frac{t}{\tau}}$ where τ is the time constant of the circuit. Calculate the rms current for the period $t = 0$ to $t = \tau$.



[Watch Video Solution](#)

8. A capacitor of capacitance $10\mu F$ is connected to an oscillator giving an output voltage $\varepsilon = (10V)\sin\omega t$. Find the peak currents in the circuit for $\omega = 10s^{-1}, 100s^{-1}, 500s^{-1}, 1000s^{-1}$.

 [Watch Video Solution](#)

9. A coil of inductance $5.0mH$ and negligible resistance is connected to the oscillator of the previous problem. Find the peak currents in the circuit for $\omega = 100s^{-1}, 500s^{-1}, 1000s^{-1}$.

 [Watch Video Solution](#)

10. A coil has a resistance of 10Ω and an inductance of 0.4 henry. It is connected to an AC source of $6.5V$, $\frac{30}{\pi}$, $\frac{30}{\pi}Hz$. Find the average power consumed in the circuit.



Watch Video Solution

11. A resistor of resistance 100Ω is connected to an AC source $\varepsilon = (12V)\sin(250\pi s^{-1})t$. Find the energy dissipated as heat during $t = 0$ to $t = 1.0ms$.



Watch Video Solution

12. In a series RC circuit with an AC source, $R = 300\Omega$, $C = 25\mu F$, $\varepsilon_0 50V$ and $v = \frac{50}{(\Pi)Hz}$. Find the peak current and the average power dissipated in the circuit.

 [Watch Video Solution](#)

13. An electric bulb is designed to consume $55W$ when operated at 110 volts. It is connected to a $220V$, $50Hz$ line through a choke coil in series. What should be the inductance of the coil for which the bulb gets correct voltage?

 [Watch Video Solution](#)

14. In a series LCR circuit with an AC source, $R = 300\Omega$, $C = 20\mu F$, $L = 1.0\text{henry}$, $\varepsilon_{rms} = 50V$ and $\nu = \frac{50}{\pi}Hz$. Find (a) the rms current in the circuit and (b) the rms potential differences across the capacitor, the resistor and the inductor. Note that the sum of the rms potential differences across the three elements is greater than the rms voltage of the source.



Watch Video Solution

15. Consider the situation of the previous problem.

Find the average electric field energy stored in the capacitor and the average magnetic field energy stored in the coil.



Watch Video Solution

16. An inductance of $2.0H$, a capacitance of $18\mu F$ and a resistance of $10k\Omega$ are connected to an AC source of $20V$ with adjustable frequency. (a) What frequency should be chosen to maximize the current in the circuit? (b) What is the value of this maximum current?

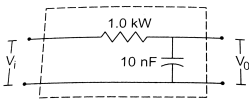
 [Watch Video Solution](#)

17. A coil a capacitor and an AC source of rms voltage $24V$ are connected in series. By varying the frequency of the source, a maximum rms current of 6 A is observed. If coil is connected is at DC battery of emf 12 volt and internal resistance 4Ω , then current through it in steady state is

 [Watch Video Solution](#)

18. Figure shows a typical circuit for low-pass filter. An AC input $V_i = 10mV$ is applied at the left end and

the output V_0 is received at the right end. Find the output voltages for $v = 10kHz, 100kHz, 1.0MHz$ and $10.0MHz$. Note that as the frequency is increased the output decreases and hence the name low-pass filter.



 [Watch Video Solution](#)

19. A transformer has 50 turns in the primary and 100 in the secondary. If the primary is connected to a $220VDC$ supply, what will be the voltage across the secondary?

 [Watch Video Solution](#)

watch video solution