



PHYSICS

BOOKS - SUNIL BATRA 41 YEARS IITJEE PHYSICS (HINGLISH)

ELECTROMAGNETIC INDUCTION AND ALTERNATING CURRENT

Jee Main And Advanced

1. A uniform wound solenoidal coil of self inductance 1.8×10^{-4} henry and resistance 6 ohm is broken up into two identical coils. These identical coils are then connected in parallel across a 15-volt battery of negligible resistance. The time constant for the current in the circuit is.....seconds and the steady state current through the battery isamperes.



Watch Video Solution

2. In a straight conducting wire, a constant current is flowing from left to right due to a source of emf. When the source is switched off, the direction of the induced current in the wire will.....



Watch Video Solution

3. An e.m.f. Can be induced between the two ends of a straight copper wire when it is moved through a uniform magnetic field.



Watch Video Solution

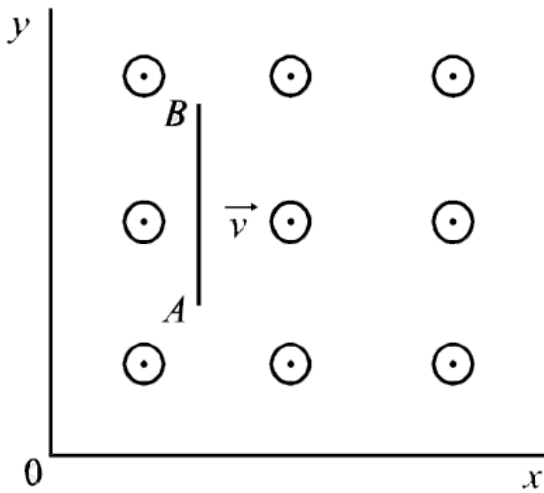
4. A coil of metal wire is kept stationary in a non-uniform magnetic field. An e.m.f. Is induced in the coil.



Watch Video Solution

5. A conducting rod AB moves parallel to the x-axis (see Fig.) in a uniform magnetic field pointing in the positive z-direction. The end A of the rod

gets positively charged.



Watch Video Solution

6. A thin circular ring of area A is held perpendicular to a uniform magnetic field of induction B . A small cut is made in the ring and a galvanometer is connected across the ends such that the total resistance of the circuit is R . When the ring is suddenly squeezed to zero area, the charge flowing through the galvanometer is

A. $\frac{BR}{A}$

B. $\frac{AB}{A}$

C. ABR

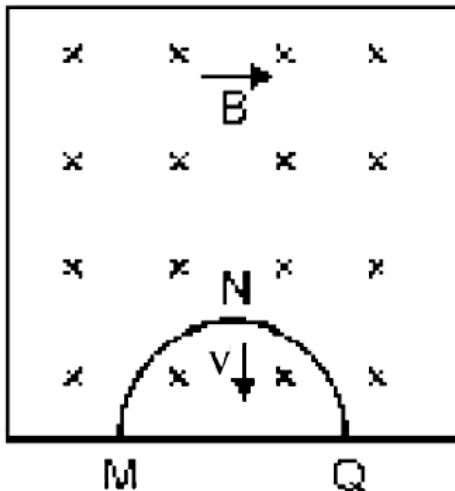
D. $\frac{B^2 A}{R^2}$

Answer: B



Watch Video Solution

7. A thin semi-circular conducting ring of radius R is falling with its plane vertical in horizontal magnetic induction $\left(\vec{B}\right)$. At the position MNQ the speed of the ring is v , and the potential difference developed across the ring is



A. zero

B. $Bv\pi R^2 / 2$ and M is higher potential

C. πRBv and Q is at higher potential

D. $2RBv$ and Q is at higher potential

Answer: D



Watch Video Solution

8. Two identical circular loops of metal wire are lying on a table without touching each other. Loop A carries a current which increases with time. In response, the loop B

A. remain stationary

B. is attracted by the loop-A

C. is repelled by the loop-A

D. rotates about its CM, with CM fixed

Answer: C



Watch Video Solution

9. A coil of inductance 8.4 mH and resistance $6(\Omega)$ is connected to a 12 V battery. The current in the coil is 1.0 A at approximately the time

A. 500s

B. 25 s

C. 35 s

D. 1 ms

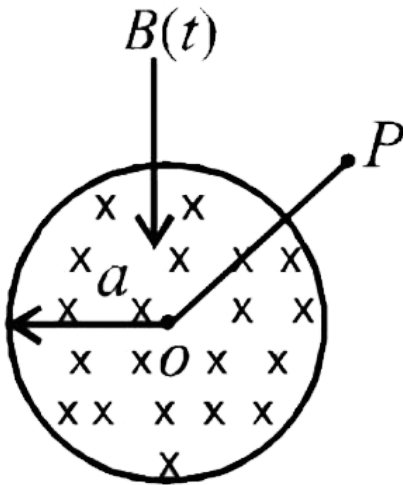
Answer: D



Watch Video Solution

10. A uniform but time-varying magnetic field $B(t)$ exists in a circular region of radius a and is directed into the plane of the paper, as shown.

The magnitude of the induced electric field at point P at a distance r from the centre of the circular region



- A. is zero
- B. decreases as $1/r$
- C. Increases as r
- D. decreases as $1/r^2$

Answer: B



Watch Video Solution

11. A coil of wire having inductance and resistance has a conducting ring placed coaxially within it. The coil is connected to a battery at time $t=0$, so that a time-dependent current $I_1(t)$ starts following through the coil. If $I_2(t)$ is the current induced in the ring, and $B(t)$ is the magnetic field at the axis of the coil due to $I_1(t)$ then as a function of time ($t > 0$), the product $I_2(t)B(t)$

- A. Increases with time
- B. decreases with time
- C. does not vary with time
- D. passes through a maximum

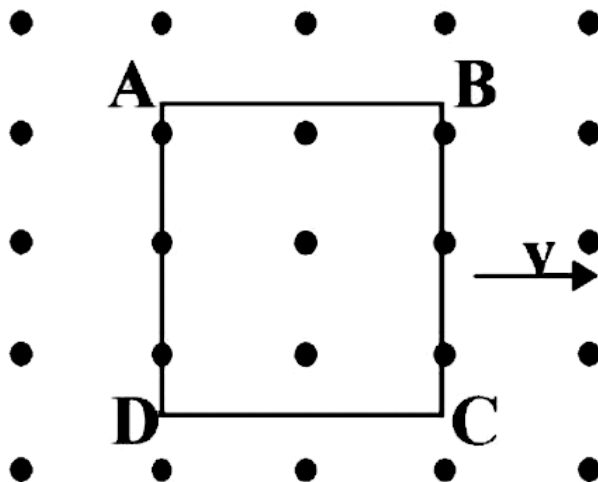
Answer: B



Watch Video Solution

12. A metallic square loop ABCD is moving in its own plane with velocity v in a uniform magnetic field perpendicular to its plane as shown in the

figure. An electric field is induced



A. in AD, but not in BC

B. in BC, but not in AD

C. neither in AD nor in BC

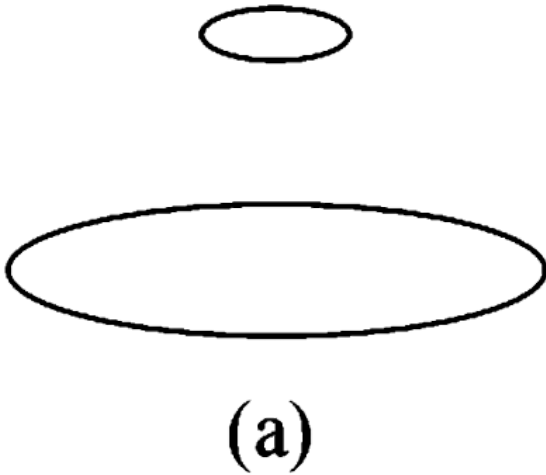
D. in both AD and BC

Answer: D



Watch Video Solution

13. Two circular coils can be arranged in any of the three situation shown in the figure. Their mutual inductance will be

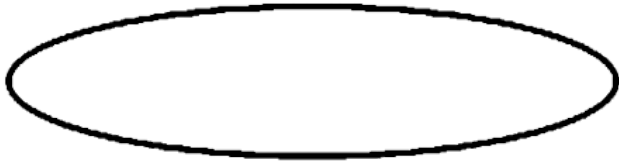


,



(b)

,



(c)

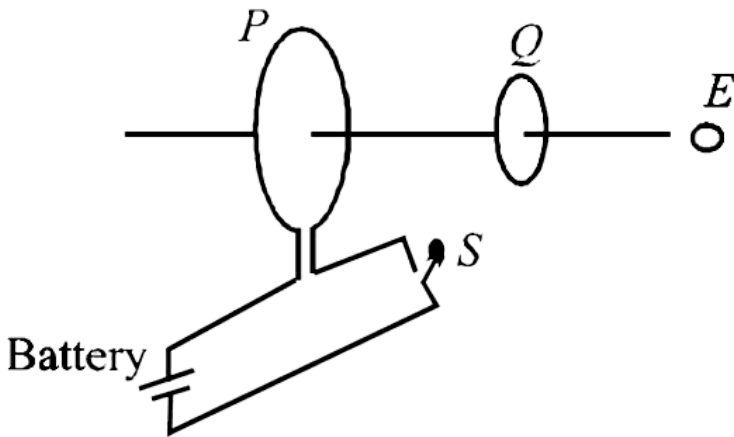
- A. maximum in situation (a)
- B. maximum in situation (b)
- C. maximum in situation (c)
- D. the same in all situation

Answer: A



Watch Video Solution

14. As shown in the figure, P and Q are two coaxial conducting loops separated by some distance. When the switch S is closed, a clockwise current I_P (as seen by E) and an induced current I_{Q1} flows in Q. The switch remains closed for a long time. when S is opened, a current I_{Q2} flows in Q. Then the direction I_{Q1} and I_{Q2} (as seen by E) are



- A. respectively clockwise and anti-clockwise
- B. both clockwise

C. both anti-clockwise

D. respectively anti-clockwise and clockwise

Answer: D



Watch Video Solution

15. A short-circuited coil is placed in a time-varying magnetic field. Electrical power is dissipated due to the current induced in the coil. If the number of turns were to be quadrupled and the wire radius halved, the electrical power dissipated would be

A. halved

B. the same

C. doubled

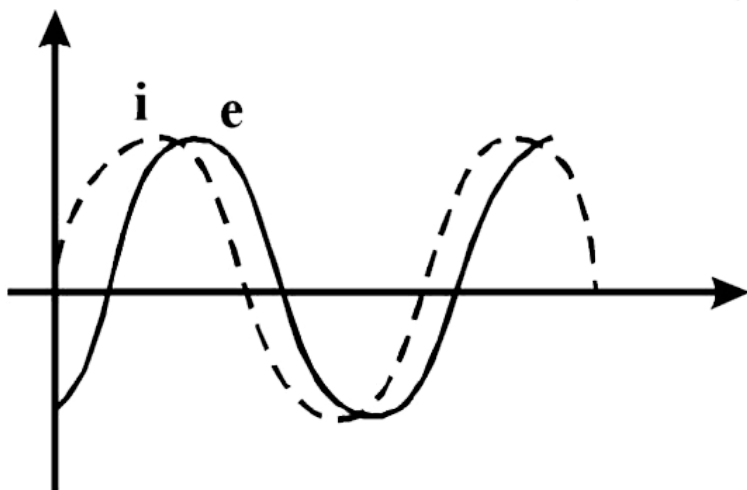
D. quadrupled

Answer: B



Watch Video Solution

16. When an AC source of $emf e = E_0 \sin(100t)$ is connected across a circuit i in the circuit, the phase difference between the emf e and the current i in the circuit is observed to be $(\pi/4)$, as shown in the diagram. If the circuit consists possibly only of R-C or R-L or L-C in series, find the relationship between the two elements



A. $R = 1k\Omega, C = 10\mu F$

B. $R = 1k\Omega, C = 1\mu F$

C. $R = 1k\Omega, L = 10\mu F$

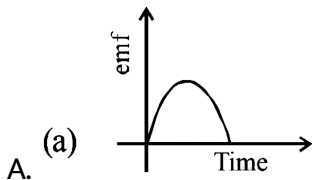
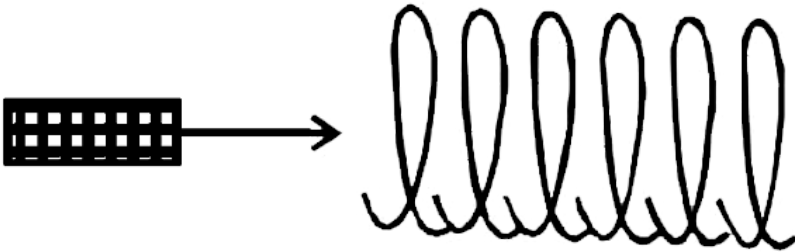
D. $R = 1k\Omega, L = 1\mu F$

Answer: A

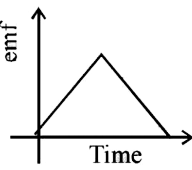


Watch Video Solution

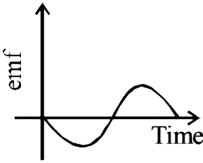
17. A small bar magnet is being slowly inserted with constant velocity inside a solenoid as shown in figure. Which graph best represents the relationship between emf induced with time



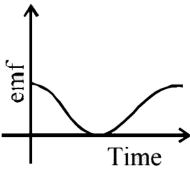
B. (b)



C. (c)



D. (d)



Answer: C



Watch Video Solution

18. An infinitely long cylinder is kept parallel to an uniform magnetic field B directed along positive z -axis. The direction of induced current as seen from the z -axis will be

A. zero

B. anticlockwise of the +ve z axis

C. clockwise of the +ve z axis

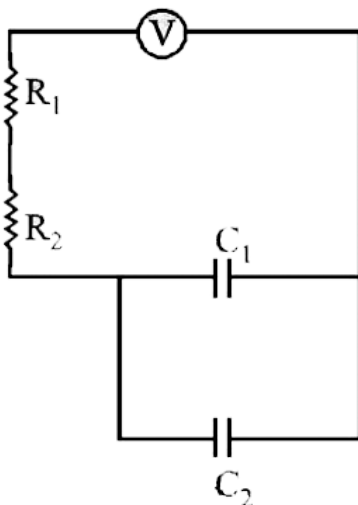
D. along the magnetic field

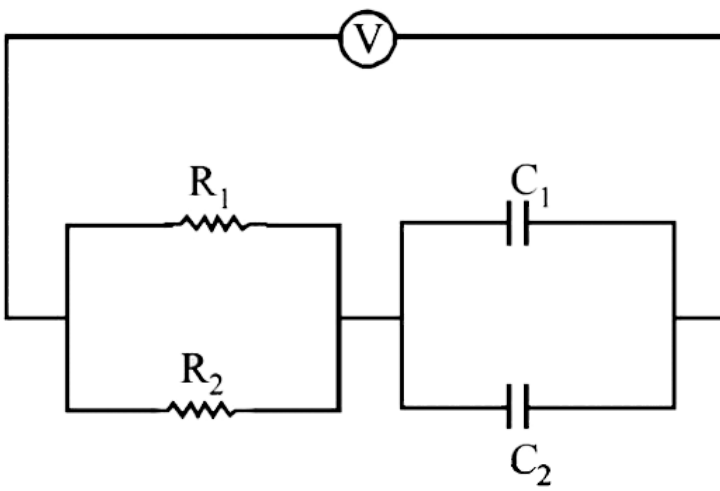
Answer: A



Watch Video Solution

19. Find the time constant τ (in) fo the given RC circuits in the given order respectively





$$(R_1) = 1\Omega, (R_2) = 2\Omega, C_1 = 4\mu F, C_2 = 2\mu F$$

A. $18, 4, \frac{8}{9}$

B. $18, \frac{8}{9}, 4$

C. $4, 18, \frac{8}{9}$

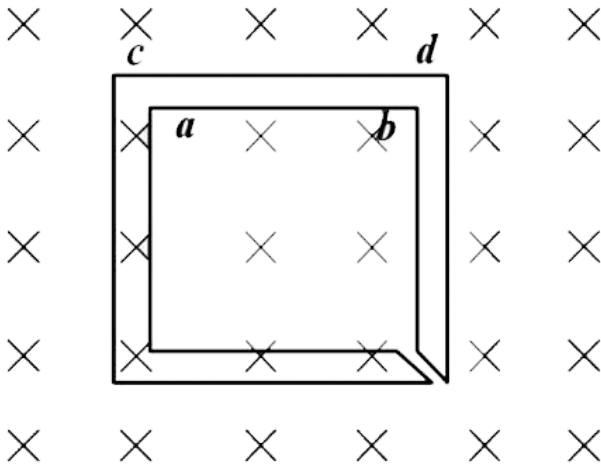
D. $4, 8/9, 18$

Answer: B



Watch Video Solution

20. The figure shows certain wire segments joined together to form a coplanar loop. The loop is placed in a perpendicular magnetic field in the direction going into the plane of the figure. The magnitude of the field increases with time I_1 and I_2 are the currents in the segments ab and cd . Then,



A. $(I_1) > (I_2)$

B. $(I_1) < (I_2)$

C. (I_1) is in the direction ba and (I_2) is in the direction cd

D. (I_1) is in the direction ab and (I_2) is in the direction dc

Answer: D



[Watch Video Solution](#)

21. An AC voltage source of variable angular frequency (ω) and fixed amplitude V_0 is connected in series with a capacitance C and an electric bulb of resistance R (inductance zero). When (ω) is increased

- A. the bulb glows dimmer
- B. the bulb glows brighter
- C. total impedance of the circuit is unchanged
- D. total impedance of the circuit increases

Answer: B



[Watch Video Solution](#)

22. L , C and R represent the physical quantities, inductance, capacitance and resistance respectively. The combination(s) which have the dimensions of frequency are

A. $1/RC$

B. R/L

C. $1/\sqrt{LC}$

D. C/L

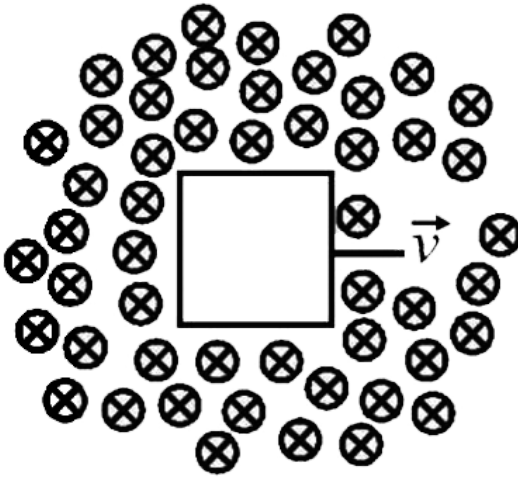
Answer: A::B::C



Watch Video Solution

23. A conducting square loop of side L and resistance R moves in its plane with a uniform velocity v perpendicular to one of its sides. A magnetic induction B , constant in time and space, pointing perpendicular and into the plane of the loop exists everywhere.

The current induced in the loop is



- A. BLv / R clockwise
- B. BLv / R anticlockwise
- C. $2BLv / R$ anticlockwise
- D. zero

Answer: D



Watch Video Solution

24. Two different coils have self-inductances $L_1 = 8mH$ and $L_2 = 2mH$.

The current in one coil is increased at a constant rate. The current in the second coil is also increased at the same constant rate. At a certain instant of time, the power given to the two coil is the same. At that time, the current, the induced voltage and the energy stored in the first coil are i_1 , V_1 and W_1 respectively. Corresponding values for the second coil at the same instant are i_2 , V_2 and W_2 respectively. Then:

A. $\frac{i_1}{i_2} = \frac{1}{4}$

B. $\frac{i_1}{i_2} = 4$

C. $\frac{W_1}{W_2} = \frac{1}{4}$

D. $\frac{V_1}{V_2} = 4$

Answer: A::C::D



Watch Video Solution

25. A small square loop of wire of side l is placed inside a large square loop of wire of side L ($L > l$). The loops are co-planer and their centres coincide. The mutual inductance of the system is proportional to

A. l/L

B. l^2/L

C. L/l

D. L^2/l

Answer: B



Watch Video Solution

26. The SI unit of inductance, the henry, can be written as

A. weber/ampere

B. volt-second/ampere

C. $j\omega \frac{e}{(\text{ampere})^2}$

D. ohm-second

Answer: A::B::C::D



Watch Video Solution

27. A metal rod moves at a constant velocity in a direction perpendicular to its length. A constant, uniform magnetic field exists in space in a direction perpendicular to the rod as well as its velocity. Select the correct statement(s) from the following

- A. The entire rod is at the same electric potential.
- B. There is an electric field in the rod.
- C. The electric potential is highest at the centre of the rod and decreases towards its ends.
- D. The electric potential is lowest at the centre of the rod, and increases towards its ends.

Answer: B



Watch Video Solution

28. A series R-C circuit is connected to AC voltage source. Consider two cases, (A) when C is without a dielectric medium and (B) when C is filled with dielectric of constant 4. The current I_R through the resistor and voltage V_C across the capacitor are compared in the two cases. Which of the following is/ are true?

A. $I_R^A > I_R^B$

B. $I_R^A < I_R^B$

C. $V_A^C > V_B^C$

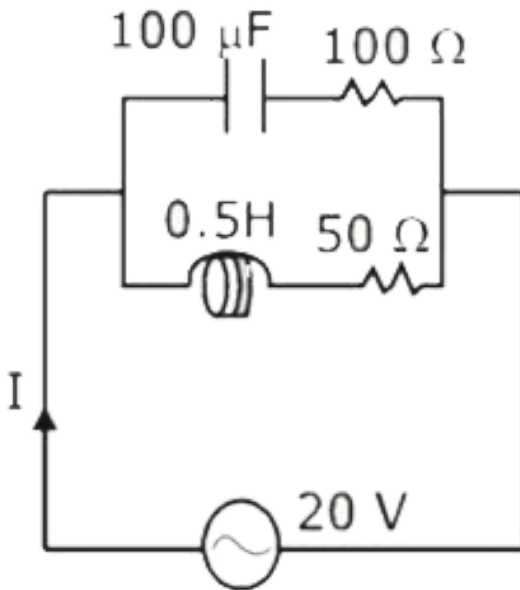
D. $V_A^C > V_B^C$

Answer: A::C



Watch Video Solution

29. In the given circuit, the AC source has $\omega = 100 \text{ rad/s}$. Considering the inductor and capacitor to be ideal, the correct choice(s) is (are)



- A. the current through the circuit, I is 0.3 A.
- B. the current through the circuit, I is $0.3\sqrt{2}$ A.
- C. The voltage across 100Ω resistor $= 10\sqrt{2}V$
- D. The voltage across 50Ω resistor $= 10V$

Answer: A::C



Watch Video Solution

30. A current-carrying infinitely long wire is kept along the diameter of a circular wire loop, without touching it. The correct statement(s) is (are)

- A. The emf induced in the loop is zero if the current is constant.
- B. The emf induced in the loop is finite if the current is constant.
- C. The emf induced in the loop is zero if the current is decreases at a steady rate.
- D. The emf induced in the loop is infinite if the current is decreases at a steady rate.

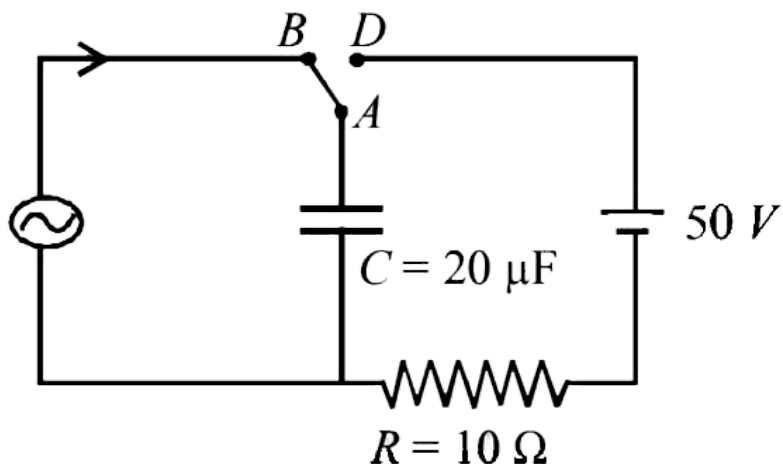
Answer: A



Watch Video Solution

31. At time $t = 0$, terminal A in the circuit shown in the figure is connected to B by a key and an alternating current $I(t) = I_0 \cos(\omega t)$,

with $I_0 = 1A$ and $(\omega) = 500rad s^{-1}$ starts flowing in it with the initial direction shown in the figure. At $t = (7\pi/6\omega)$, the key is switched from B to D. Now onwards only A and D are connected. A total charge Q flows from the battery to charge the capacitor fully. If $C=20(\mu)F$, $R = 10(\Omega)$ and the battery is ideal with emf of $50 V$, identify the correct statement(s).



A. Magnitude of the maximum charge on the capacitor before

$$t = \frac{7\pi}{6\omega} \text{ is } 1 \times 10^{-3} C$$

B. The current in the left part of the circuit just before $t = \frac{7\pi}{6\omega}$ is clockwise

C. Immediately after A is connected to D, the current R is $10A$.

D. $Q = 2 \times 10^{03} C$

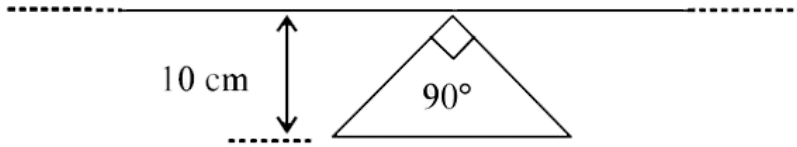
Answer: C::D



Watch Video Solution

32. A conducting loop in the shape of a right angled isosceles triangle of height 10 cm is kept such that 90° vertex is very close to an infinitely long conducting wire (see the figure). The wire is electrically insulated from the loop. The hypotenuse of the triangle is parallel to the wire. Current in the triangular loop is in counterclockwise direction and increased at a constant rate of $10 A s^{-1}$. Which of the following statement(s) is(are)

true?



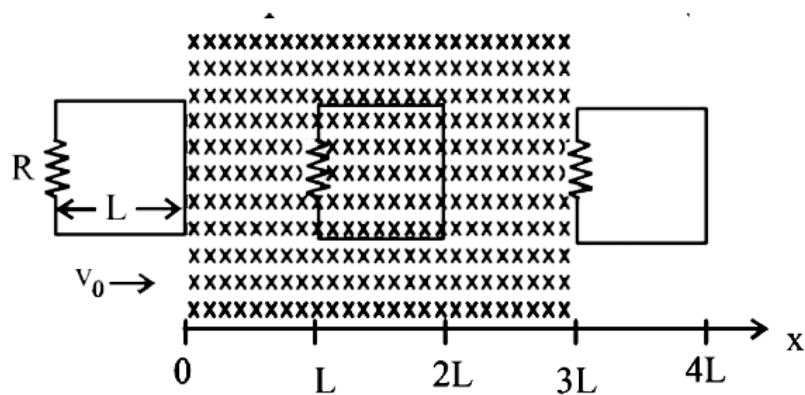
- A. The magnitude of induced emf in the wire is $\left(\frac{\mu_0}{\pi}\right)$ volt
- B. If the loop is rotated at a constant angular speed about the wire, an additional emf of $\frac{\mu_0}{\pi}$ volt is induced in the wire
- C. The induced current in the wire is in opposite direction to the current along the hypotenuse
- D. There is a repulsive force between the wire and the loop

Answer: A::D

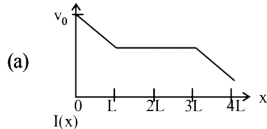


Watch Video Solution

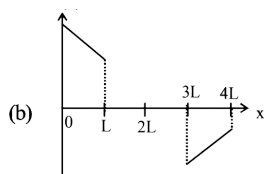
33. A rigid wire loop of square shape having side of length L and resistance R is moving along the x -axis with a constant velocity v_0 in the plane of the paper. At $t = 0$, the right edge of the loop enters a region of length $3L$ where there is a uniform magnetic field B_0 into the plane of the paper, as shown in the figure. For sufficiently large v_0 the loop eventually crosses the region. Let x be the location of the right edge of the loop. Let $v(x)$, $I(x)$ and $F(x)$ represent the velocity of the loop, current in the loop, and force on the loop, respectively, as a function of x . Counter-clockwise current is taken as positive.



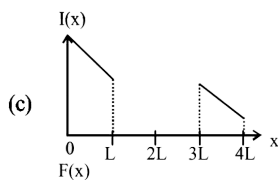
. Which of the following schematic plot(s) is (are) correct? (Ignore gravity)



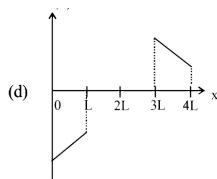
A.



B.



C.



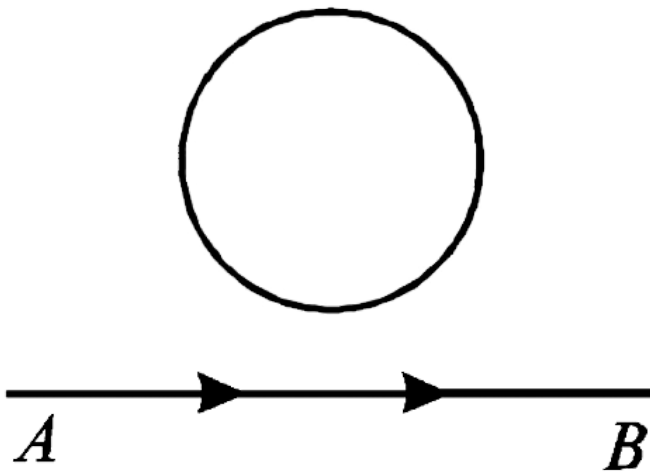
D.

Answer: A::B



Watch Video Solution

34. A current from A to B is increasing in magnitude. What is the direction of induced current. If any, in the loop as shown in the figure?



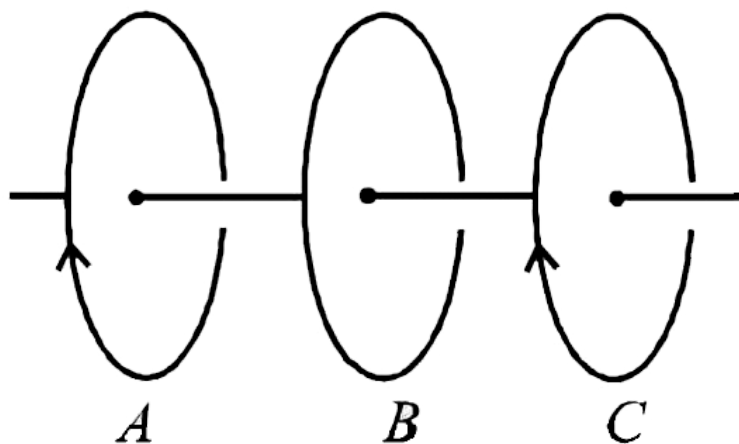
[Watch Video Solution](#)

35. The two rails of a railway track, insulated from each other and the ground, are connected to a milli voltmeter. What is the reading of the milli voltmeter when a train travels at a speed of 180 km/h along the track, given that the vertical component \neq of earth's magnetic field is $0.2 \times 10^{-4} \text{ weber/m}^2$ & the rails are separated by 1 meter?



[Watch Video Solution](#)

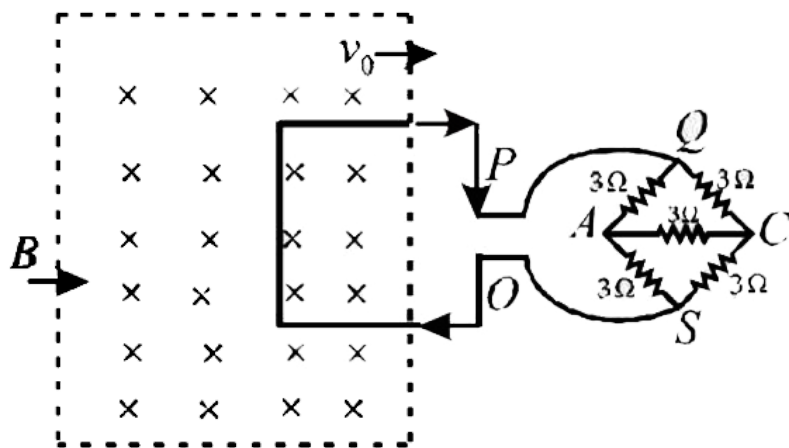
36. Three identical closed coils A, B and C are placed with their planes parallel to one another. Coils A and C carry equal currents as shown in fig. Coils B and C are fixed in position and coil A is moved towards B with uniform motion. Is there any induced current in B? If no, give reasons. If yes mark the direction of the induced current in the diagram.



Watch Video Solution

37. A square metal wire loop of side 10 cm and resistance 1 ohm is moved with a constant velocity (v_0) in a uniform magnetic field of induction $B = 2 \text{ weber/m}^2$ as shown in the figure. The magnetic field lines are

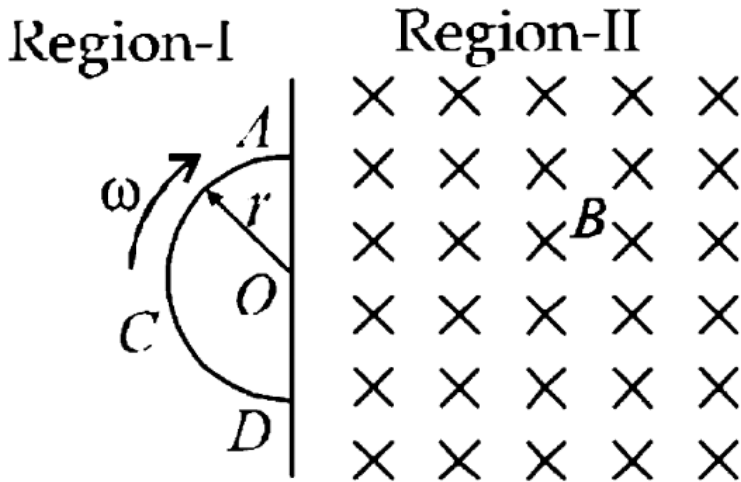
perpendicular to the plane to the loop (directed into the paper). The loop is connected to a network of resistors each of value 3 ohms. The resistances of the lead wire OS and PQ are negligible. What should be the speed of the loop so as to have a steady current of 1 milliampere in the loop? Given the direction of current in the loop.



Watch Video Solution

38. Space is divided by the line AD into two regions. Region I is field free and the Region II has a uniform magnetic field B direction into the plane of the paper. ACD is a semicircular conducting loop of radius r with center at O, the plane of the loop being in the plane of the paper. The loop is

now made to rotate with a constant angular velocity ω about an axis passing through O and the perpendicular to the plane of the paper. The effective resistance of the loop is R.



(i) obtain an expression for the magnitude of the induced current in the loop.

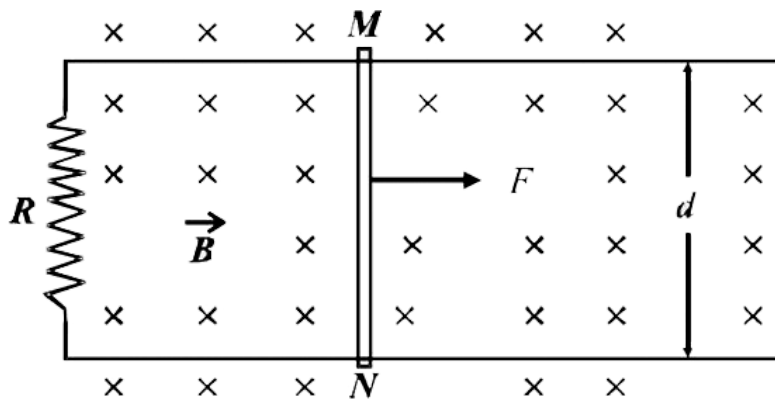
(ii) Show the direction of the current when the loop is entering into the Region II.

Plot a graph between the induced e.m.f and the time of rotation for two periods or rotation.



Watch Video Solution

39. Two long parallel horizontal rails are a distance d apart and each having a resistance λ per unit length. They are joined at one end by a resistance R . A perfectly conducting rod MN of mass m is free to slide along the rails without friction (see figure). There is a uniform magnetic field of induction B normal to the plane of the paper and directed into the paper. A variable force F is applied to the rod MN such that, as the rod moves, a constant current flows through R .

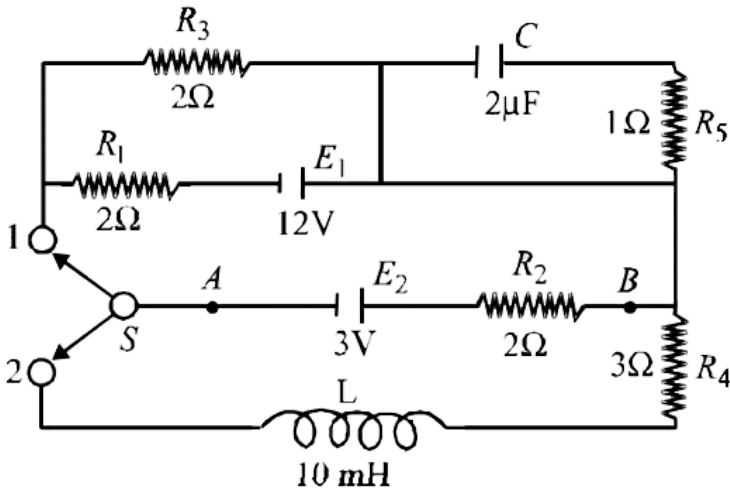


- (i) Find the velocity of the rod and the applied force F as function of the distance x of the rod from R .
- (ii) What fraction of the work done per second by F is converted into heat?



Watch Video Solution

40. A circuit containing a two position switch S is shown in fig.



(a) The switch S is in position '1'. Find the potential difference $V_A - V_B$ and the rate of production of joule heat in (R_1).

(b) If now the switch S is put in position 2 at $t=0$ find

(i) steady current in (R_4) and

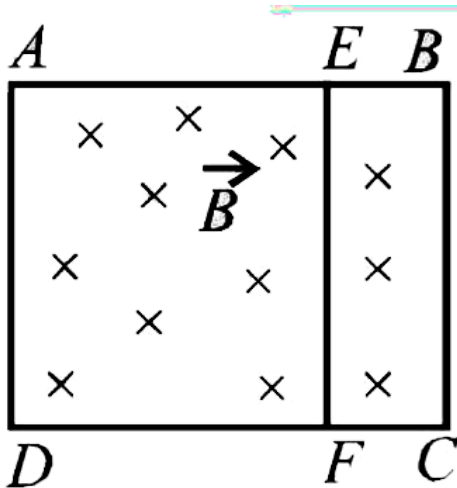
(ii) the time when current in (R_4) is half the steady value.

Also calculate the energy stroed in the inductor L at that time.



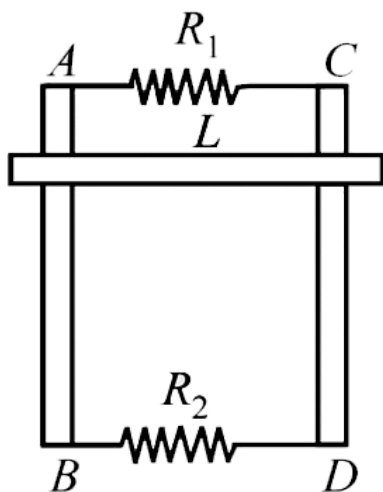
Watch Video Solution

41. A rectangular frame ABCD, made of a uniform metal wire, has a straight connection between E and F made of the same wire, as shown in fig. AEFD is a square of side 1m, and $EB=FC=0.5\text{m}$. The entire circuit is placed in steadily increasing, uniform magnetic field directed into the plane of the paper and normal to it. The rate of change of the magnetic field is 1T/s . The resistance per unit length of the wire is $1\omega/m$. Find the magnitude and directions of the currents in the segments AE, BE and EF.



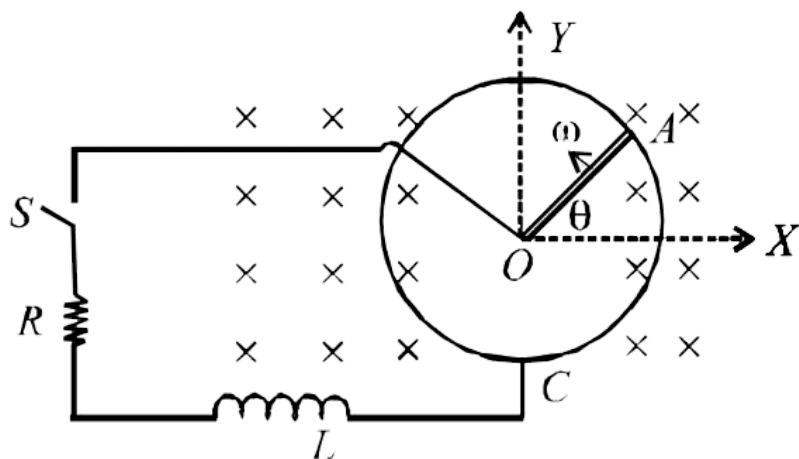
Watch Video Solution

42. Two parallel vertical metallic rails AB and CD are separated by 1m. They are connected at two ends by resistance (R_1) and (R_2) as shown in fig. A horizontal metallic bar L of mass 0.2 kg slides without friction vertically down the rails under the action of gravity. There is a uniform horizontal magnetic field of 0.6 Tesla perpendicular to the plane of the rails. It is observed that when the terminal velocity is attained, the power dissipated in (R_1) and (R_2) are 0.6 watt and 1.2 watt respectively. Find the terminal velocity of the bar L and the values of (R_1) and (R_2).



Watch Video Solution

43. A metal rod OA of mass 'm' and length 'r' is kept rotating with a constant angular speed ω in a vertical plane about a horizontal axis at the end O. The free end A is arranged to slide without friction along fixed conduction circular ring in the same plane as that of rotation. A uniform and constant magnetic induction \vec{B} is applied perpendicular and into the plane of rotation as shown in the figure below. An inductor L and an external resistance R are connected through a switch S between the point O and a point C on the ring to form an electrical circuit. Neglect the resistance of the ring and the rod. Initially, the switch is open.



- (a) What is the induced emf across the terminals of the switch?
- (b) The switch S is closed at time $t=0$.
 - (i) Obtain an expression for the current as a function of time.

(ii) In the steady state, obtain the time dependence of the torque required to maintain the constant angular speed, given that the rod OA was along the positive X-axis at $t=0$.



[Watch Video Solution](#)

44. A solenoid has an inductance of 10 henry and a resistance of 2 ohm. It is connected to a 10 volt battery. How long will it take for the magnetic energy to reach $1/4$ of its maximum value?



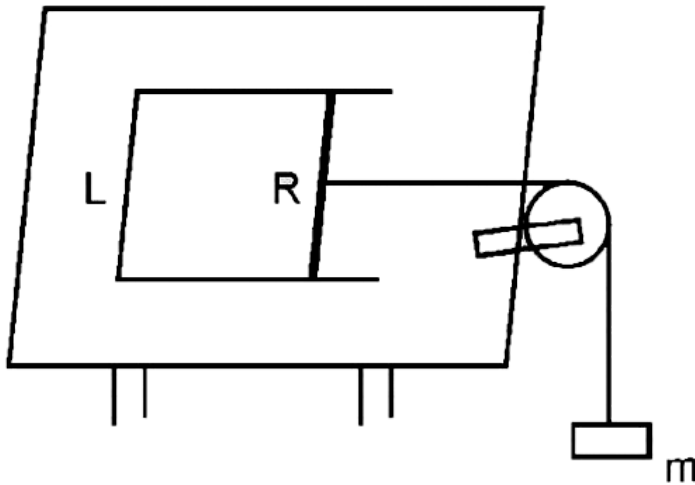
[Watch Video Solution](#)

45. A pair of parallel horizontal conducting rails of negligible resistance shorted at one end is fixed on a table. The distance between the rails is L . A conducting massless rod of resistance R can slide on the rails frictionlessly. The rod is tied to a massless string which passes over a pulley fixed to the edge of the table, A mass m , tied to the other end of the string hangs vertically. A constant magnetic field B exists perpendicular to the table. If the system is released from rest, calculate.

(i) the terminal velocity achieved by the rod, and

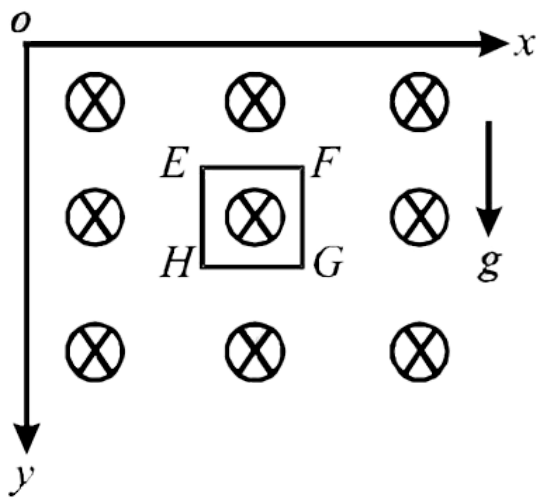
the acceleration of the mass at the instant when the velocity of the rod is

half the terminal velocity.



Watch Video Solution

46. A magnetic field $B = B_0(y/a)(\hat{k})$ is into the paper in the $+z$ direction, B_0 and a are positive constants. A square loop EFGH of side a , mass m and resistance R , in x - y plane, starts falling under the influence of gravity see figure. Note the direction of x and y axis in figure.



Find

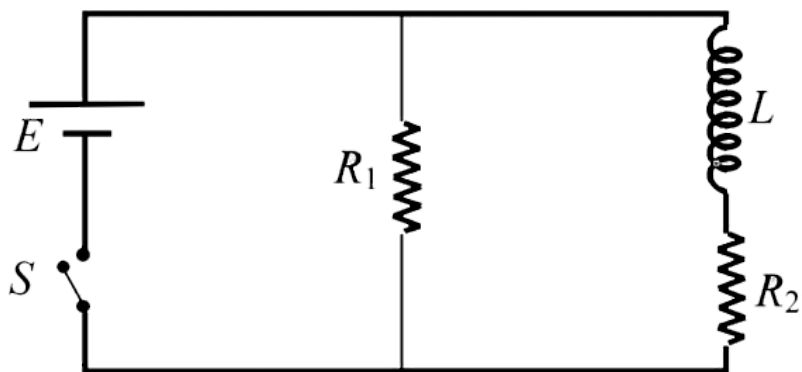
- (a) the induced current in the loop and indicate its direction.
- (b) the total Lorentz force acting on the loop and indicate its direction,
and
- (c) an expression for the speed of the loop, $v(t)$ and its terminal value.



Watch Video Solution

47. An inductor of inductance $L=400 \text{ mH}$ and resistor of resistance $R_1 = 2(\Omega)$ and $R_2 = 2(\Omega)$ are connected to a battery of emf $E = 12 \text{ V}$ as shown in the figure. The internal resistance of the battery is negligible. The switch S is closed at time $t = 0$. What is the potential drop across L as

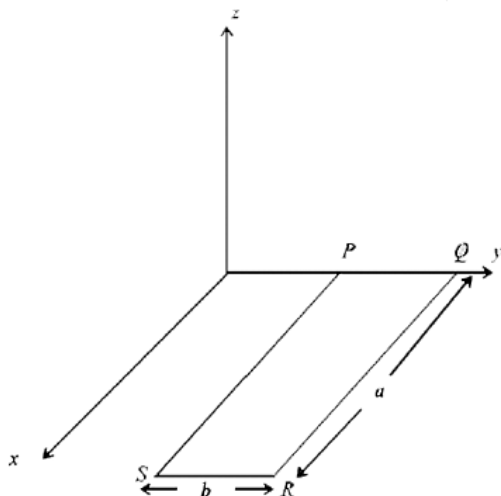
a function of time? After the steady state is reached, the switch is opened. What is the direction and the magnitude of current through R_1 as a function of time?



Watch Video Solution

48. A rectangular loop PQRS made from a uniform wire has length a , width b and mass m . It is free to rotate about the arm PQ, which remains hinged along a horizontal line taken as the y -axis (see figure). Take the vertically upward direction as the z -axis. A uniform magnetic field $\vec{B} = (3\hat{i} + 4\hat{k})B_0$ exists in the region. The loop is held in the x - y plane and a current I is passed through it. The loop is now released and is

found to stay in the horizontal position in equilibrium



- What is the direction of the current I in PQ ?
- Find the magnetic force on the arm RS .
- Find the expression for I in terms of B_0 , a , b and m



Watch Video Solution

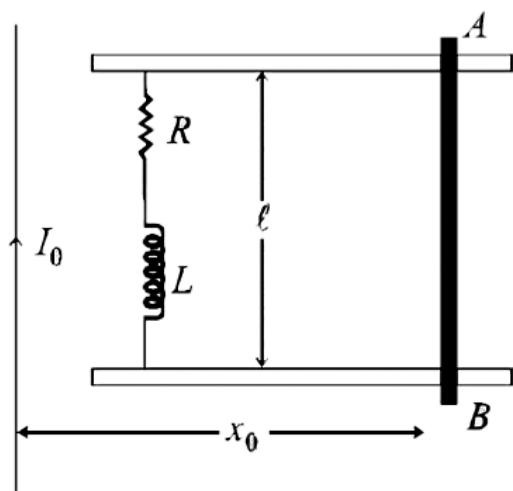
49. A metal bar AB can slide on two parallel thick metallic rails separated by a distance l . A resistance R and an inductance L are connected to the rails as shown in the figure. A long straight wire carrying a constant current I_0 is placed in the plane of the rails and perpendicular to them as shown. The bar AB is held at rest at a distance x_0 from the long wire. At

$t=0$, it is made to slide on the rails away from wire. Answer the following questions.

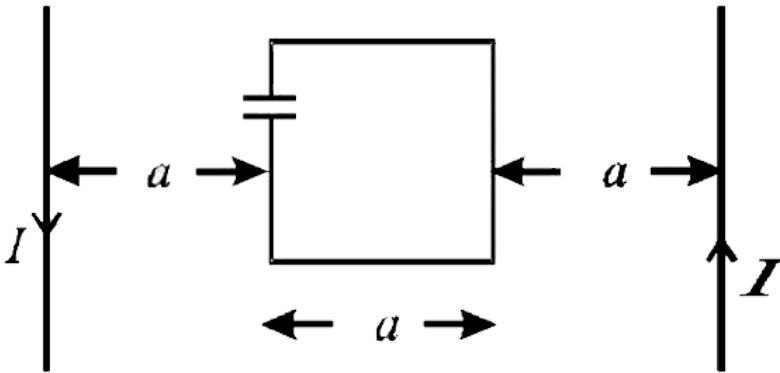
(a) Find a relation among i , $\frac{di}{dt}$ and $\frac{d\phi}{dt}$, where i is the current in the circuit and ϕ is the flux of the magnetic field due to the long wire through the circuit.

(b) It is observed that at time $t=T$, the metal bar AB is at a distance of $2x_0$ from the long wire and the resistance R carries a current (i_1). Obtain an expression for the net charge that has flown through resistance R from $t=0$ to $t=T$.

(c) The bar is suddenly stopped at time T . The current through resistance R is found to be $\frac{i_1}{4}$ at time $2T$. Find the value of $\frac{L}{R}$ in terms of the other given quantities.



50. A square loop of side 'a' with a capacitor of capacitance C is located between two current carrying long parallel wires as shown. The value of I in the wires is given as $I = (I_0)\sin \omega t$.

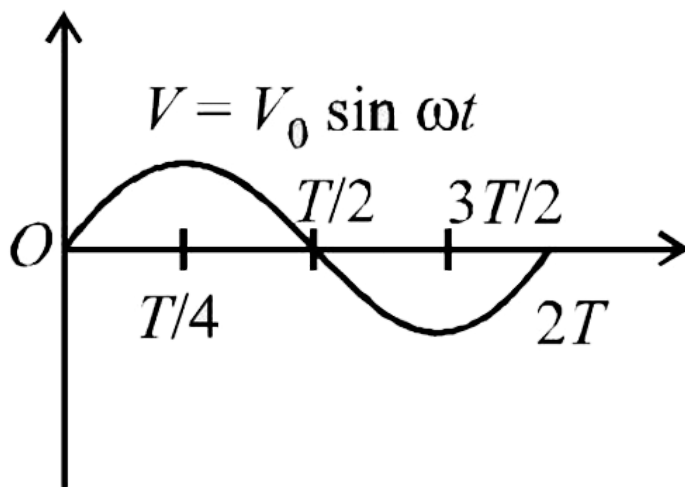


- Calculate maximum current in the square loop.
- Draw a graph between charges on the upper plates of the capacitor vs time.



Watch Video Solution

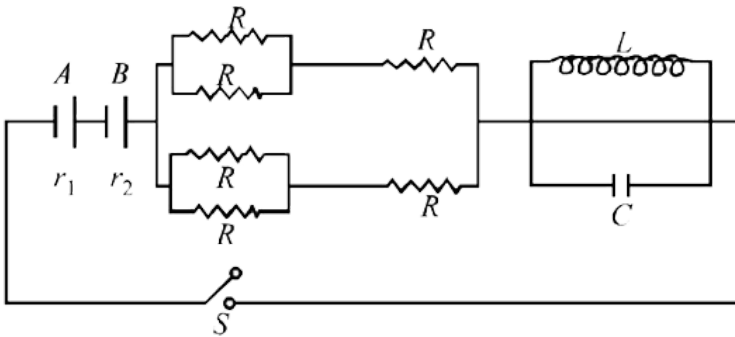
51. In a series L-R circuit ($L = 35mH$ and $R = 11\Omega$), a variable emf source ($V = V_0 \sin \omega t$) of $V_{rms} = 220V$ and frequency 50 Hz is applied. Find the current amplitude in the circuit and phase of current with respect to voltage. Draw current-time graph on given graph ($\pi = \frac{22}{7}$).



Watch Video Solution

52. In the figure both cells A and B are of equal emf. Find R for which potential difference across battery A will be zero, long time after the switch is closed. Internal resistance of batteries A and B (r_1) and (r_2)

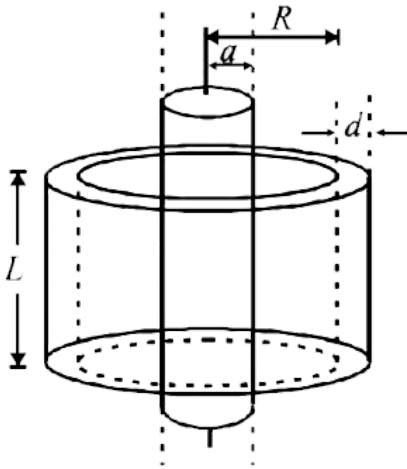
respectively ($r_1 > r_2$).



Watch Video Solution

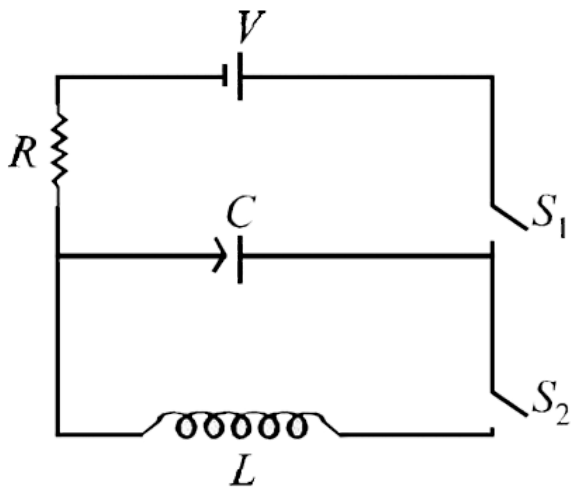
53. A long solenoid of radius a and number of turns per unit length n is enclosed by cylindrical shell of radius R . Thickness d ($d \ll R$) and length L . A variable current $i = i_0 \sin \omega t$ flows through the coil. If the resistivity of the material of cylindrical shell is (ρ) , find the induced current in the

shell.



Watch Video Solution

54. In the given circuit the capacitor (C) may be charged through resistance R by a battery V by closing switch (S_1). Also when (S_1) is open and (S_2) is closed the capacitor is connected in series with inductor (L).



At the start, the capacitor was uncharged. when switch (S_1) is closed and (S_2) is kept open, the time constant of this circuit is τ . which of the following is correct

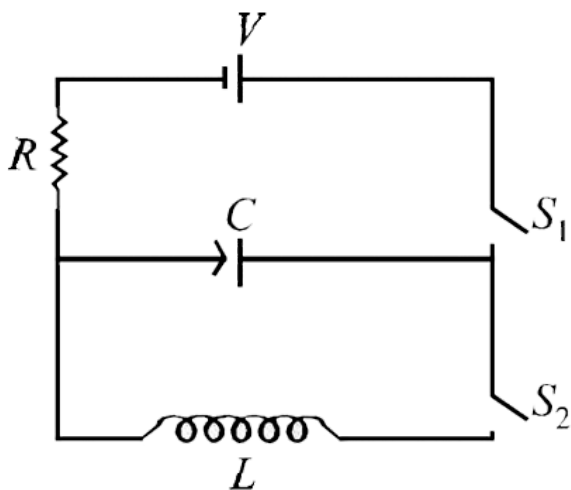
- A. after interval τ charge on the capacitor is $\frac{CV}{2}$
- B. after interval 2τ charge on the capacitor is $(CV)(1 - e^{-2})$
- C. the work done by the voltage source will be half of the heat dissipated when the capacitor is fully charged
- D. after time interval 2τ , charge on the capacitor is $CV(1 - e^{-1})$

Answer: B



Watch Video Solution

55. In the given circuit the capacitor (C) may be charged through resistance R by a battery V by closing switch (S_1). Also when (S_1) is open and (S_2) is closed the capacitor is connected in series with inductor (L).



When the capacitor gets charged completely, (S_1) is opened and (S_2) is closed, Then,

A. at $t=0$ energy stored in the circuit is purely in the form of magnetic energy

B. at any time $t > 0$, current in the circuit is in the same direction

C. at $t = 0$, there is no exchange of energy between the inductor and capacitor

D. at any time $t > 0$, instantaneous current in the circuit may be

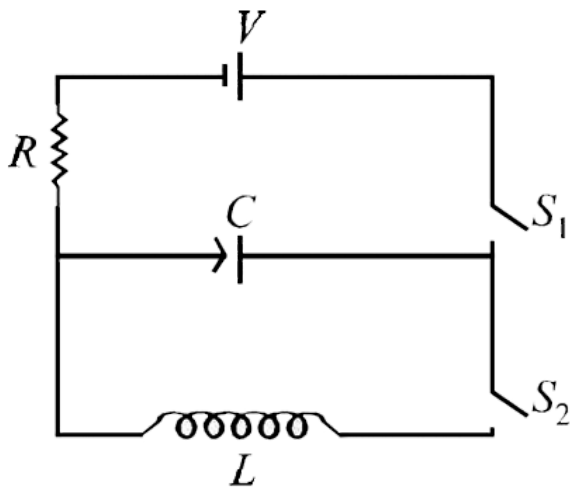
$$V \sqrt{\frac{C}{L}}$$

Answer: D



Watch Video Solution

56. In the given circuit the capacitor (C) may be charged through resistance R by a battery V by closing switch (S_1). Also when (S_1) is open and (S_2) is closed the capacitor is connected in series with inductor (L).



Given that the total charge stored in the LC circuit is (Q_0). for $t \geq 0$, the charge on the capacitor is

A. $Q = Q_0 \cos\left(\frac{\pi}{2} + \frac{t}{\sqrt{LC}}\right)$

B. $Q = Q_0 \cos\left(\frac{\pi}{2} - \frac{t}{\sqrt{LC}}\right)$

C. $Q = -LC \frac{d^2 Q}{dt^2}$

D. $Q = -\frac{1}{\sqrt{LC}} \frac{d^2 Q}{dt^2}$

Answer: C



Watch Video Solution

57. A thermal power plant produced electric power of 600kW at 4000V, which is to be transported to a place 20 km away from the power plant for consumer's usage. It can be transported either directly with a cable of large current carrying capacity or by using a combination of step-up and step-down transformers at the two ends. The drawback of the direct transmission is the large energy dissipation. In the method using transformers, the dissipation is much smaller. In this method a step-up transformer is used at the plant side so that the current is reduced to a smaller value. At the consumers' end, a step-down transformer is used to supply power to the consumers at the specified lower voltage. It is reasonable to assume that the power cable is purely resistive and the transformers are ideal with power factor unity. All the currents and voltages mentioned are values.

If the direct transmission method with a cable of resistance $0.4(\omega) km^{-1}$ is used, the power dissipation (in %) during transmission is

A. 20

B. 30

C. 40

D. 50

Answer: A



Watch Video Solution

58. A thermal power plant produced electric power of 600kW at 4000V, which is to be transported to a place 20 km away from the power plant for consumer's usage. It can be transported either directly with a cable of large current carrying capacity or by using a combination of step-up and step-down transformers at the two ends. The drawback of the direct transmission is the large energy dissipation. In the method using transformers, the dissipation is much smaller. In this method a step-up transformer is used at the plant side so that the current is reduced to a smaller value. At the consumer's end, a step-down transformer is used to supply power to the consumers at the specified lower voltage. It is reasonable to assume that the power cable is purely resistive and the transformers are ideal with power factor unity. All the currents and

voltage mentioned are values.

In the method using the transformers assume that the ratio of the number of turns in the primary to that in the secondary in the step-up transformer is 1:10 if the power to the consumers has to be supplied at 200V, the ratio of the number of turns in the primary to that in the secondary in the step-down transformer is

A. 200: 1

B. 150: 1

C. 100: 1

D. 50: 1

Answer: B



Watch Video Solution

59. A point charges Q is moving in a circular orbit of radius R in the x - y plane with an angular velocity ω . This can be considered as equivalent to a loop carrying a steady current $\frac{Q\omega}{2\pi}$. A uniform magnetic field along the

positive z-axis is now switched on, which increases at a constant rate from 0 to B in one second. Assume that the radius of the orbit remains constant. The application of the magnetic field induces an emf in the orbit. The induced emf is defined as the work done by an induced electric field in moving a unit positive charge around a closed loop. It is known that, for an orbiting charge, the magnetic dipole moment is proportional to the angular momentum with a proportionality constant λ .

The change in the magnetic dipole moment associated with the orbit, at the end of the time interval of the magnetic field change, is

A. $\frac{BR}{4}$

B. $\frac{BR}{2}$

C. BR

D. 2BR

Answer: B



Watch Video Solution

60. A point charges Q is moving in a circular orbit of radius R in the x - y plane with an angular velocity ω . This can be considered as equivalent to a loop carrying a steady current $\frac{Q\omega}{2\pi}$. A uniform magnetic field along the positive z -axis is now switched on, which increases at a constant rate from 0 to B in one second. Assume that the radius of the orbit remains constant. The application of the magnetic field induces an emf in the orbit. The induced emf is defined as the work done by an induced electric field in moving a unit positive charge around a closed loop. It is known that, for an orbiting charge, the magnetic dipole moment is proportional to the angular momentum with a proportionality constant λ .

The change in the magnetic dipole moment associated with the orbit at the end of the time interval of the magnetic field change, is

A. $-\lambda BQR^2$

B. $-\lambda \frac{BQR^2}{2}$

C. $\lambda \frac{BQR^2}{2}$

D. $\lambda(BQR^2)$

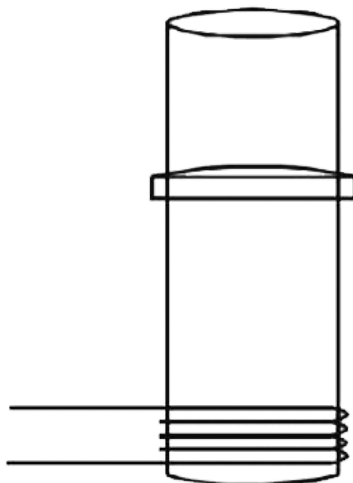
Answer: B



Watch Video Solution

61. Statement-1: A vertical iron rod has coil of wire wound over it at the bottom end. An alternating current flows in the coil. The rod goes through a conduction ring as shown in the figure. The ring can float at a certain height above the coil.

Statement -2: In the above situation a current is induced in the ring which interacts with the horizontal components of the magnetic field to produce an average force in the upward direction.



- A. Statement-1 is true, statement-2 is true, Statement-2 is a correct explanation for Statement-1
- B. Statement-1 is true, statement-2 is true, Statement-2 is NOT a correct explanation for Statement-1
- C. Statement-1 is true, statement-2 is False
- D. Statement-1 is false, Statement-2 is True.

Answer: A



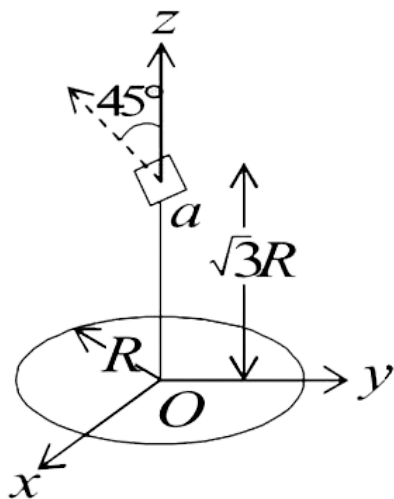
Watch Video Solution

62. A series R-C combination is connected to an AC voltage of angular frequency $\omega = 500 \text{ radian/s}$. If the impedance of the R-C circuit is $R\sqrt{1.25}$, the time constant (in millisecond) of the circuit is



Watch Video Solution

63. A circular wire loop of radius R is placed in the x - y plane centered at the origin O . A square loop of side a ($a < R$) having two turns is placed with its centre at $z = \sqrt{3}R$ along the axis of the circular wire loop, as shown in figure. The plane of the square loop makes an angle of 45° with respect to the z -axis. If the mutual inductance between the loops is given by $\frac{\mu_0 a^2}{2^{p/2} R}$, then the value of p is



Watch Video Solution

64. Two inductors L_1 (inductance 1 mH, internal resistance 3Ω) and L_2 (inductance 2 mH, internal resistance 4Ω), and a resistor R (resistance 12Ω)

are all connected in parallel across a 5 V battery. The circuit is switched on at time $t=0$. The ratio of the maximum to the minimum current (I_{\max} / I_{\min}) drawn from the battery is



Watch Video Solution

65. The power factor of an AC circuit having resistance (R) and inductance (L) connected in series and an angular velocity ω is

A. $R / \omega L$

B. $R / (R^2 + \omega^2 L^2)^{1/2}$

C. $\omega L / R$

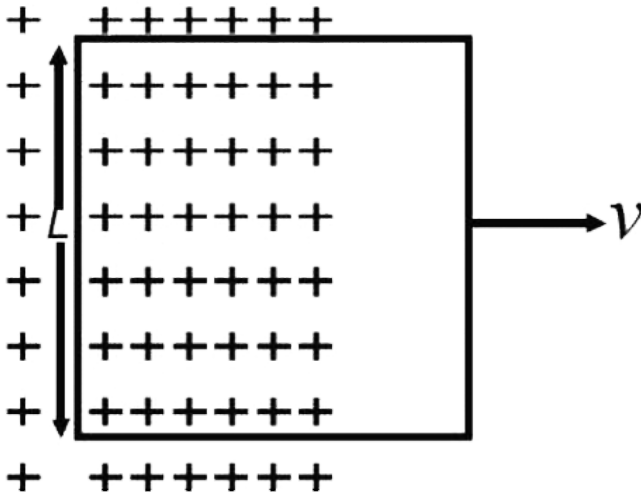
D. $R / (R^2 - \omega^2 L^2)^{1/2}$

Answer: B



Watch Video Solution

66. A conducting square loop of side L and resistance R moves in its plane with a uniform velocity v perpendicular to one of its sides. A magnetic induction B constant in time and space, pointing perpendicular and into the plane of the loop exists everywhere with half the loop outside the field, as shown in figure. The induced emf is

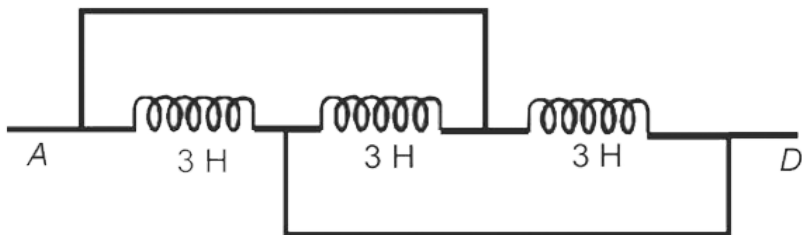


- A. zero
- B. RvB
- C. vBL/R
- D. vBL

Answer: D

[Watch Video Solution](#)

67. The inductance between A and D is



A. 3.66 H

B. 9 H

C. 0.66 H

D. 1 H

Answer: D

[Watch Video Solution](#)

68. In a transformer, number of turns in the primary coil are 140 and that in the secondary coil are 280. If current in primary coil is 4A, then that in the secondary coil is

A. 4A

B. 2A

C. 6A

D. 10A

Answer: B



Watch Video Solution

69. Two coils are placed close to each other. The mutual inductance of the pair of coils depends upon.

A. the rates at which currents are changing in the two coils

- B. relative position and orientation of the two coils
- C. the materials of the wires of the coils
- D. the currents in the two coils

Answer: B



Watch Video Solution

70. When the current changes from $+2\text{A}$ to -2A in 0.5 second an emf of 8V is induced in a coil. The coefficient of self-induction of the coil is

- A. 0.2H
- B. 0.4H
- C. 0.8H
- D. 0.1H

Answer: D



Watch Video Solution

71. In an oscillating LC circuit the maximum charge on the capacitor is Q . The charges on the capacitor when the energy is stored equally between the electric and magnetic field is

A. $\frac{Q}{2}$

B. $\frac{Q}{\sqrt{3}}$

C. $\frac{Q}{\sqrt{2}}$

D. Q

Answer: C



Watch Video Solution

72. The core of any transformer is laminated so as to

A. reduce the energy loss due to eddy currents

B. make it light weight

C. make it robust and strong

D. increase the secondary voltage

Answer: A



Watch Video Solution

73. Alternating current can not be measured by D.C. Ammeter because

A. Average value of current for current for complete cycle is zero

B. AC changes direction

C. A.C can not pass through D.C Ammeter will get damaged.

D. None of these

Answer: A



Watch Video Solution

74. In an LCR series a.c. Circuit the voltage across each of the components L, C and R is 50V. The voltage across the LC combination will be

- A. 100V
- B. $50\sqrt{2}V$
- C. 50V
- D. 0V(zero)

Answer: D



Watch Video Solution

75. A coil having n turns and resistance $R\Omega$ is connected with a galvanometer of resistance $4R\Omega$. This combination is moved in time t seconds from a magnetic field W_1 weber to W_2 weber. The induced current in the circuit is

A. $-\frac{W_2 - W_1}{Rnt}$

B. $-\frac{n(W_2 - W_1)}{5Rt}$

C. $-\frac{W_2 - W_1}{5Rnt}$

D. $-\frac{n(W_2 - W_1)}{Rt}$

Answer: B



Watch Video Solution

76. In a uniform magnetic field of induced B a wire in the form of a semicircle of radius r rotates about the diameter of the circle with an angular frequency ω . The axis of rotation is perpendicular to the field. If the total resistance of the circuit is R , the mean power generated per period of rotation is

A. $\frac{(B\pi r\omega)^2}{2R}$

B. $\frac{(B\pi r^2\omega)^2}{8R}$

C. $\frac{B\pi r^2\omega}{2R}$

D. $\frac{(B\pi r\omega^2)^2}{8R}$

Answer: B



Watch Video Solution

77. in a LCR circuit capacitance is chagned from C to $2C$. For the resomat frequency to remain unchanged, the inductance should be chagned from L to

A. $L/2$

B. $2L$

C. $4L$

D. $L/4$

Answer: A



Watch Video Solution

78. A metal conductor of length 1m rotates vertically about one of its ends at angular velocity 5 radians per second. If the horizontal component of earth's magnetic field is $0.2 \times 10^{-4} T$, then the emf developed between the two ends of the conductor is

A. 5mV

B. $50(\mu)V$

C. $5\mu V$

D. 50mV

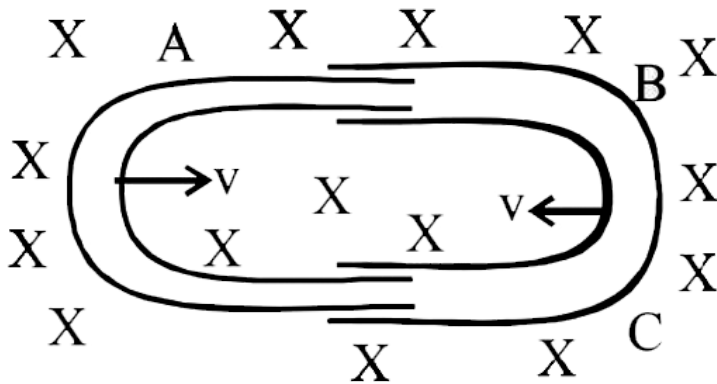
Answer: B



Watch Video Solution

79. One conducting U tube can slide inside another as shown in figure, maintaining electrical contacts between the tubes. The magnetic field B is perpendicular to the plane of the figure. If each tube moves towards the other at a constant speed v . Then the emf induced in the circuit in terms

of B , l and v where l is the width of each tube will be



A. $-Blv$

B. Blv

C. $2Blv$

D. zero

Answer: C



Watch Video Solution

80. The self inductance of the motor of an electric fan is 10H . In order to impart maximum power at 50 Hz , it should be connected to a capacitance of

A. $8\mu\text{F}$

B. $4\mu\text{F}$

C. $2\mu\text{F}$

D. $1\mu\text{F}$

Answer: D



Watch Video Solution

81. The phase difference between the alternating current and emf is $\frac{\pi}{2}$.

Which of the following cannot be the constituent of the circuit?

A. R, L

B. C alone

C. L alone

D. L,C

Answer: A



Watch Video Solution

82. A circuit has a resistance of 12 ohm and an impedance of 15 ohm. The power factor of the circuit will be

A. 0.4

B. 0.8

C. 0.125

D. 1.25

Answer: B



Watch Video Solution

83. A coil of inductance 300mH and resistance $2\ \Omega$. The current reaches half of its steady state value in

- A. 0.1 s
- B. 0.05 s
- C. 0.3 s
- D. 0.15 s

Answer: A



Watch Video Solution

84. Which of the following units denotes the dimension $\frac{ML^2}{Q^2}$, where Q denotes the electric charge?

- A. Wb/m^2
- B. Henry (H)
- C. H/m^2

D. Weber(Wb)

Answer: B



Watch Video Solution

85. In a series resonant LCR circuit the voltage across R is 100 volts and $R = 1k(\Omega)$ with $C = 2(\mu)F$. The resonant frequency (ω) is $200rad/s$. At resonance the voltage across L is

A. $2.5 \times 10^{-2}V$

B. $40V$

C. $250V$

D. $4 \times 10^{-3}V$

Answer: C



Watch Video Solution

86. In an AC generator, a coil with N turns, all of the same area A and total resistance R , rotates with frequency (ω) in a magnetic field B . The maximum value of emf generated in the coils is

A. $N. A. B. R. \omega$

B. $N. A. B$

C. $N. A. B. R$

D. $N. A. B. \omega$

Answer: D



Watch Video Solution

87. The flux linked with a coil at any instant 't' is given by

$$\phi = 10t^2 - 50t + 250$$

The induced emf at $t = 3s$ is

A. $-190V$

B. $-10V$

C. 10V

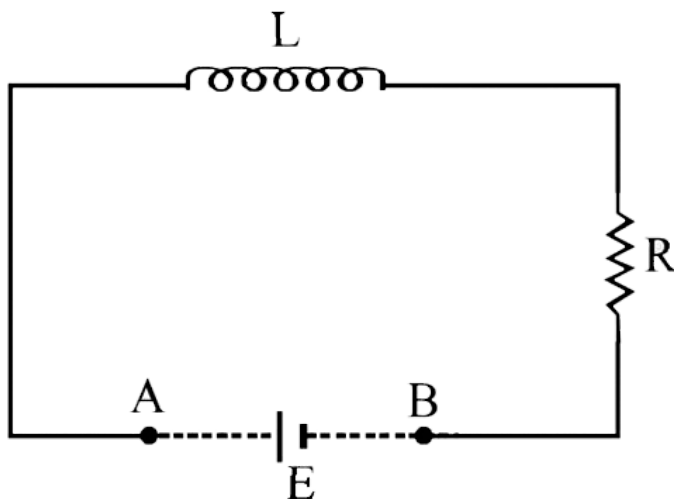
D. 190V

Answer: B



Watch Video Solution

88. An inductor ($L = 100mH$), a resistor ($R = 100(\Omega)$) and a battery ($E = 100V$) are initially connected in series as shown in the figure. After a long time the battery is disconnected after short circuiting the point A and B. The current in the circuit 1 ms after the short circuit is



A. $1/eA$

B. eA

C. $0.1A$

D. $1A$

Answer: A



Watch Video Solution

89. In an a.c. Circuit the voltage applied is $E = E_0 \sin(\omega)t$. The resulting current in the circuit is $I = I_0 \sin\left((\omega)t - \left(\frac{\pi}{2}\right)\right)$. The power consumption in the circuit is given by

A. $P = \sqrt{2}E_0I_0$

B. $P = \frac{E_0I_0}{\sqrt{2}}$

C. $P = \text{zero}$

D. $P = \frac{E_0I_0}{2}$

Answer: C



Watch Video Solution

90. An ideal coil of 10H is connected in series with a resistance of $5(\Omega)$ and a battery of 5V . 2second after the connections is made, the current flowing in ampere in the circuit is

A. $(1 - e^{-1})$

B. $(1 - e)$

C. e

D. e^{-1}

Answer: A



Watch Video Solution

91. Two coaxial solenoids are made by winding thin insulated wire over a pipe of cross-sectional area $A = 10\text{cm}^2$ and length $= 20\text{cm}$. If one of the solenoid has 300 turns and the other 400 turns, their mutual inductance is

A. $2.4\pi \times 10^{-5} H$

B. $4.8\pi \times 10^{-4} H$

C. $4.8\pi \times 10^{-5} H$

D. $2.4\pi \times 10^{-4} H$

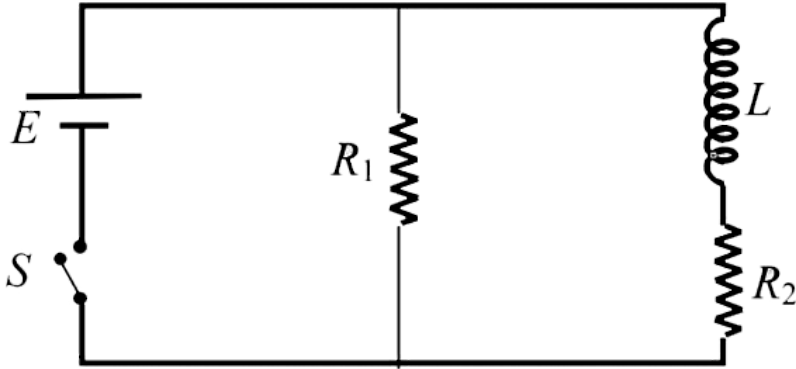
Answer: D



Watch Video Solution

92. An inductor of inductance $L = 400 \text{ mH}$ and resistor of resistance $R_1 = 2(\Omega)$ and $R_2 = 2(\Omega)$ are connected to a battery of emf $E = 12 \text{ V}$ as shown in the figure. The internal resistance of the battery is negligible. The switch S is closed at time $t = 0$. What is the potential drop across L as

a function of time? After the steady state is reached, the switch is opened. What is the direction and the magnitude of current through R_1 as a function of time?



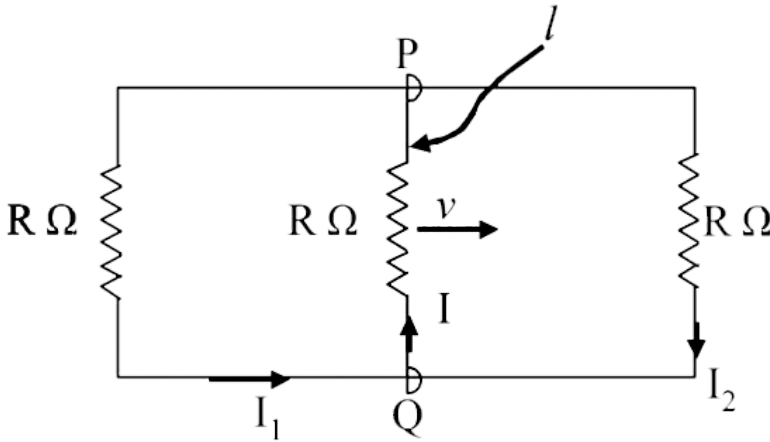
- A. $\frac{12}{t}e^{-3t}V$
- B. $6\left(1^{-t/0.2}V\right)$
- C. $12e^{-5t}V$
- D. $6e^{-5t}V$

Answer: C



Watch Video Solution

93. A rectangular loop has a sliding connector PQ of length l and resistance $R(\Omega)$ and it is moving with a speed v as shown. The set-up is placed in a uniform magnetic field going into the plane of the paper. The three currents I_1 , I_2 and I are



A. $I_1 = -I_2 = \frac{Blv}{6R}, I = \frac{2Blv}{6R}$

B. $I_1 = I_2 = \frac{Blv}{3R}, I = \frac{2Blv}{3R}$

C. $I_1 = I_2 = I = \frac{Blv}{R},$

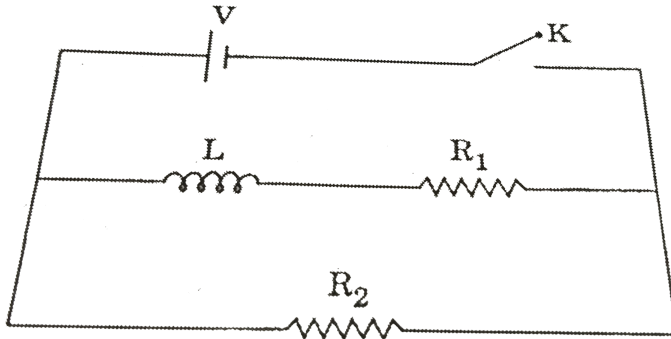
D. $I_1 = I_2 = \frac{Blv}{6R}, I = \frac{Blv}{3R}$

Answer: B



Watch Video Solution

94. In the circuit shown below, the key K is closed at $t = 0$. The current through the battery is



- A. $\frac{VR_1R_2}{\sqrt{R_1^2 + R_2^2}} \text{ at } t = 0$ and $\frac{V}{R^2} \text{ at } t = \infty$
- B. $\frac{V}{R^2} \text{ at } t = 0$ and $\frac{V(R_1 + R_2)}{R_1R_2} \text{ at } t = \infty$
- C. $\frac{V}{R^2} \text{ at } t = 0$ and $\frac{VR_1R_2}{\sqrt{R_1^2 + R_2^2}} \text{ at } t = \infty$
- D. $\frac{v(R_1 + R_2)}{R_1R_2} \text{ at } t = 0$ and $\frac{V}{R_2} \text{ at } t = \infty$

Answer: B



Watch Video Solution

95. In a series LCR circuit $R = 200(\Omega)$ and the voltage and the frequency of the main supply is 220V and 50 Hz respectively. On taking out the capacitance from the circuit the current lags behind the voltage by 30° . On taking out the inductor from the circuit the current leads the voltage by 30° . The power dissipated in the LCR circuit is

- A. 305 W
- B. 210 W
- C. Zero W
- D. 242 W

Answer: D



Watch Video Solution

96. A boat is moving due east in a region where the earth's magnetic field is $5.0 \times 10^{-5} \text{ N A}^{-1} \text{ m}^{-1}$ due north and horizontal. The boat carries a vertical aerial 2 m long. If the speed of the boat is 1.50 m s^{-1} , the magnitude of the induced emf in the wire of aerial is

A. 0.75 mV

B. 0.50 mV

C. 0.15 mV

D. 1 mV

Answer: C



Watch Video Solution

97. A fully charged capacitor C with initial charge q_0 is connected to a coil of self inductance L at $t=0$. The time at which the energy is stored equally between the electric and the magnetic fields is

A. $\frac{\pi}{4}\sqrt{LC}$

B. $2\pi\sqrt{LC}$

C. \sqrt{LC}

D. $\pi\sqrt{LC}$

Answer: A



Watch Video Solution

98. A resistor 'R' and $2(\mu)F$ capacitor in series is connected through a switch to 200 V direct supply. Across the capacitor is a neon bulb that lights up at 120 V. Calculate the value of R to make the bulb light up 5 s after the switch has been closed. ($\log_{10} 2.5 = 0.4$)

A. $1.7 \times 10^5 \Omega$

B. $2.7 \times 10^6 \Omega$

C. $3.3 \times 10^7 \Omega$

D. $1.3 \times 10^4 \Omega$

Answer: B



Watch Video Solution

99. A coil is suspended in a uniform magnetic field, with the plane of the coil parallel to the magnetic lines of force. When a current is passed through the coil it starts oscillating, It is very difficult to stop. But if an aluminium plate is placed near to the coil, it stops. This is due to :

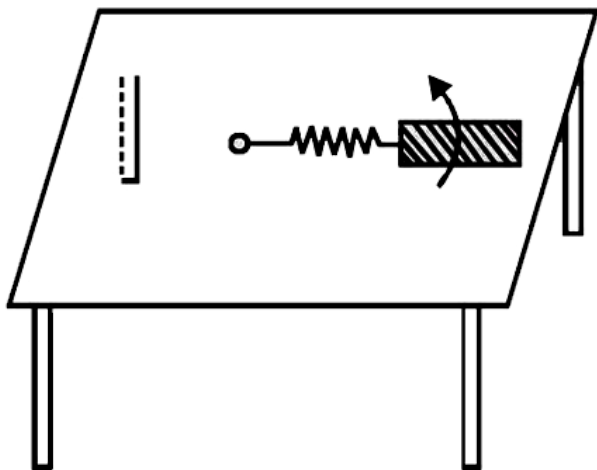
- A. development of air current when the plate is placed
- B. Induction of electrical charge on the plate
- C. Shielding of magnetic lines of force as aluminium is a paramagnetic material.
- D. electromagnetic induction in the aluminium plate giving rise to electromagnetic damping.

Answer: D



Watch Video Solution

100. A metallic rod of length ' l ' is tied to a string of length $2l$ and made to rotate with angular speed ω on a horizontal table with one end of the string fixed. If there is a vertical magnetic field ' B ' in the region, the e.m.f. Induced across the ends of the rod is



- A. $\frac{2B\omega l^2}{2}$
- B. $\frac{3B\omega l^2}{2}$
- C. $\frac{4B\omega l^2}{2}$
- D. $\frac{5B\omega l^2}{2}$

Answer: D



Watch Video Solution

101. A circular loop of radius 0.3 cm lies parallel to a much bigger circular loop of radius 20 cm. The centre of the small loop is on the axis of the bigger loop. The distance between their centres is 15 cm. If a current of 2.0 A flows through the smaller loop, then the flux linked with bigger loop is

A. $9.1 \times 10^{-11} \text{ weber}$

B. $6 \times 10^{-11} \text{ weber}$

C. $3.3 \times 10^{-11} \text{ weber}$

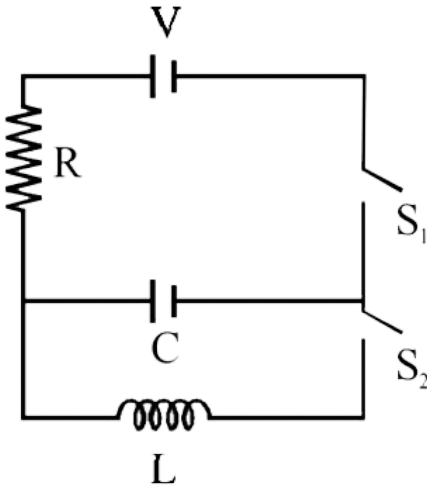
D. $6.6 \times 10^{-11} \text{ weber}$

Answer: A



Watch Video Solution

102. In an LCR circuit as shown below both switches are open initially. Now switch S_1 kept open. (q is charge on the capacitor and $\tau = RC$ is Capacitive time constant). Which of the following statement is correct?



A. work done by the battery is half of the energy dissipated in the resistor

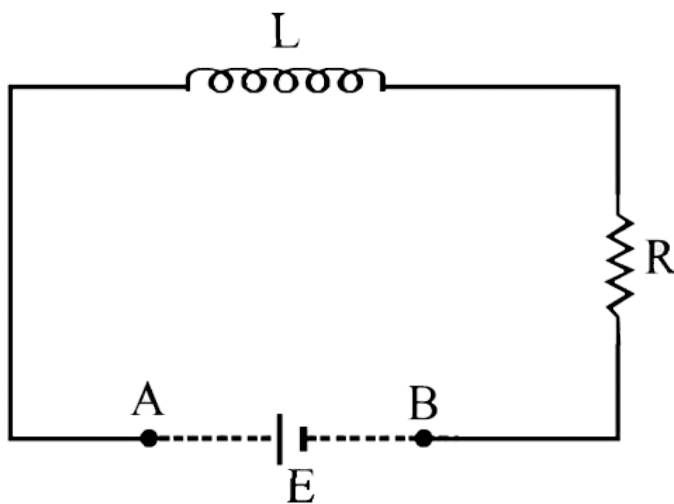
B. $\tau = RC$, $q = CV/2$

C. $\tau = 2(RC)$, $q = CV(1 - e^{-2})$

D. $\tau = 2(RC)$, $q = CV(1 - e^{-1})$

Answer: C

103. An inductor ($L = 100mH$), a resistor ($R = 100(\Omega)$) and a battery ($E = 100V$) are initially connected in series as shown in the figure. After a long time the battery is disconnected after short circuiting the point A and B. The current in the circuit 1 ms after the short circuit is



A. $\frac{e}{1 - e}$

B. 1

C. -1

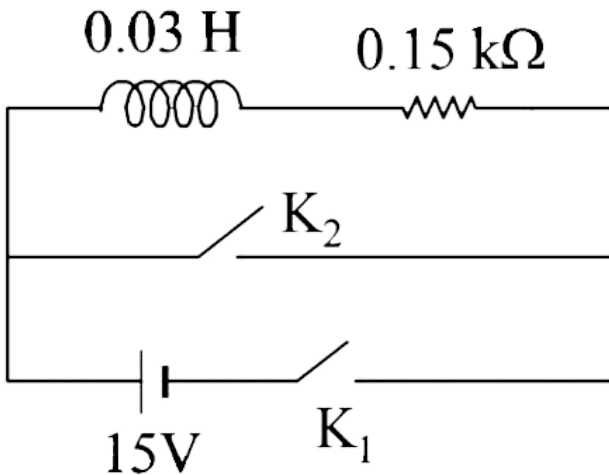
D. $\frac{1 - e}{e}$

Answer: C



Watch Video Solution

104. An inductor ($L = 0.03 \text{ H}$) and a resistor ($R = 0.15 \text{ k}(\Omega)$) are connected in series to a battery of 15 V EMF in a circuit shown below. The key K_1 is opened and Key K_2 is closed simultaneously. At $t = 1 \text{ ms}$, the current in the circuit will be ($e^5 = 150$)



- A. 6.7 mA
- B. 0.67 mA
- C. 100 mA

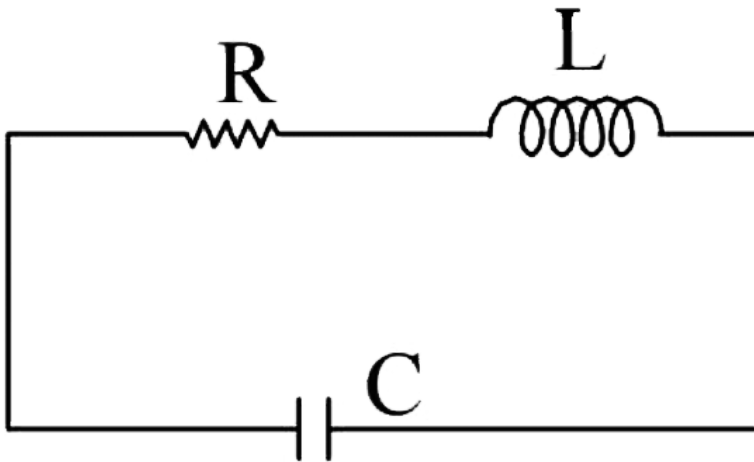
D. 67mA

Answer: B



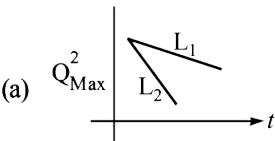
Watch Video Solution

105. An LCR circuit is equivalent to a damped pendulum. In an LCR circuit the capacitor is charged to (Q_0) and then connected to the L and R as shown below.

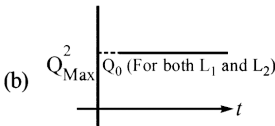


If a student plots graphs of the square of maximum charge (Q_{\max}^2) on the capacitor with time (t) for two different values L_1 and L_2 ($L_1 > L_2$)

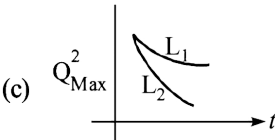
of L then which of the following represents this graph correctly? (plots are schematic and not drawn to scale).



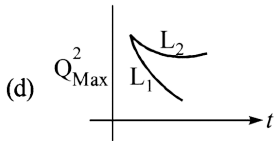
A.



B.



C.



D.

Answer: C



Watch Video Solution

106. Two coaxial solenoids of different radius carry current I in the same direction. \vec{F}_1 be the magnetic force on the inner solenoid due to the outer one and \vec{F}_2 be the magnetic force on the outer solenoid due to the inner one. Then

A. \vec{F}_1 is radially inward and \vec{F}_2

B. \vec{F}_1 is radially outwards and $\vec{F}_2 = 0$

C. $\vec{F}_1 = \vec{F}_2 = 0$

D. \vec{F}_1 is radially inwards and \vec{F}_2 is radially outwards

Answer: C



Watch Video Solution

107. An are lamp requires a direct current of 10A at 80V to function. If it is connected to a 220V(rms), 50 Hz AC supply, the series inductor needed for it to work is close to:

A. 0.044H

B. 0.065H

C. 80H

D. 0.08H

Answer: B



Watch Video Solution