



## CHEMISTRY

### BOOKS - NEET PREVIOUS YEAR (YEARWISE + CHAPTERWISE)

## POLYMERS

#### Exercise

1. Natural rubber has :

- A. All trans-configuration
- B. Alternate cis-and trans-configuration
- C. Random cis-and trans-configuration

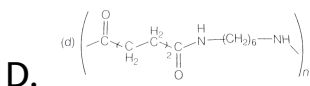
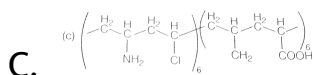
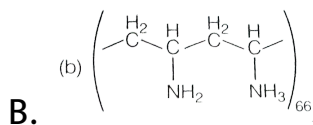
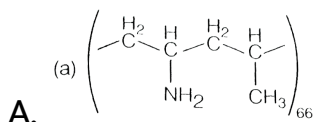
## D. All cis-configuration

**Answer: D**



**Watch Video Solution**

2. Which one of the following represent nylon 6,6 polymer?



**Answer: D**



[Watch Video Solution](#)

3. Biodegradable polymer which can be produced from glycine and aminocaproic acid.

A. nylon 2-nylon 6

B. PHBV

C. buna-N

D. nylon-6,6

**Answer: A**



[Watch Video Solution](#)

4. Caprolactam is used for the manufacture of :

A. nylon-6

B. teflon

C. terylene

D. nylon-6-

**Answer: A**



**Watch Video Solution**

5. Which of the following organic compounds polymerize to form the polyester Dacron?

A. Propylene and para- $\text{OH}(\text{C}_6\text{H}_4) - \text{OH}$

B. Benzoic acid and ethanol

C. Terephthalic acid and ethylene glycol

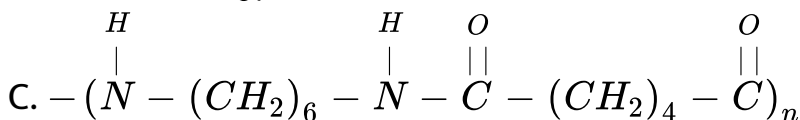
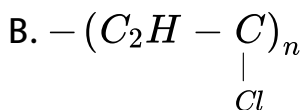
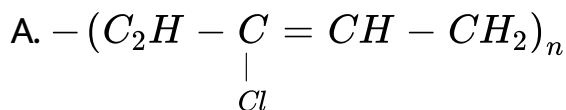
D. Benzoic acid and para- $OH(C_6H_4) - OH$

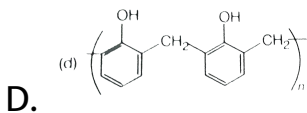
**Answer: C**



**Watch Video Solution**

6. Which one of the following is an example of a thermosetting polymer?

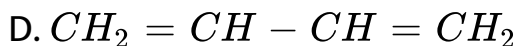
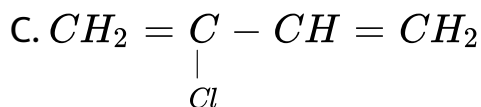
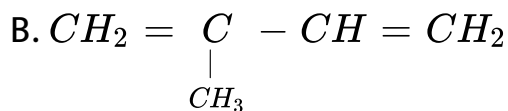




**Answer: D**

 **Watch Video Solution**

7. Which is the monomer of neoprene in the following?



**Answer: C**





[Watch Video Solution](#)

8. Nylon is an example of

A. polyester

B. polysaccharide

C. polyamide

D. polythene

**Answer: C**



[Watch Video Solution](#)

9. Which one of the following is not a condensation polymer?

A. Melamine

B. Glyptal

C. Dacron

D. Neoprene

**Answer: D**



**Watch Video Solution**

**10.** Which of the following statements is false

A. Artificial silk is derived from cellulose

B. nylon-66 is an example of elastomer

C. The repeat unit in natural rubber is isoprene



D. Both starch and cellulose are polymers of glucose

**Answer: B**



**Watch Video Solution**

**11. Of the following which one is classified as polyester polymer?**

A. Bakelite

B. Melamine

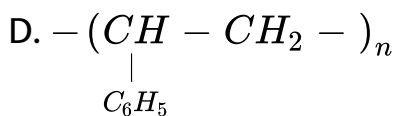
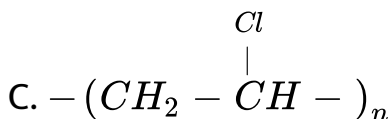
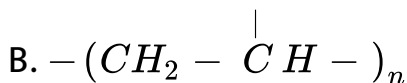
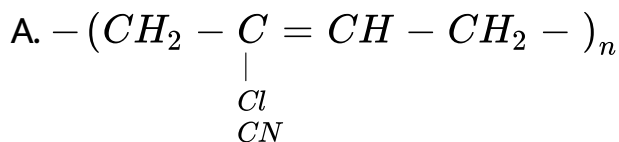
C. Nylon-66

D. Terylene

**Answer: D**

[Watch Video Solution](#)

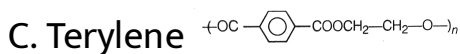
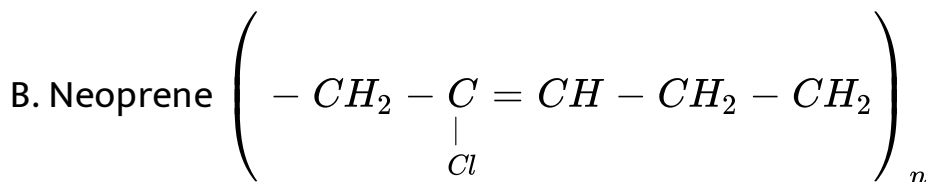
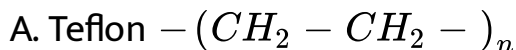
12. Which of the following structures represents neoprene polymers?



**Answer: A**

[Watch Video Solution](#)

13. Structures of some common polymers are given. Which one is not correctly represented?



66



**Answer: B**



**Watch Video Solution**

14. Which one of the following statements is not true ?

- A. In vulcanisation, different chains make rubber harder and stronger
- B. Natural rubber has the trans-configuration at every double bond
- C. Buna-S is a copolymer of butadiene and styrene
- D. Natural rubber is a 1,4-polymer of isoprene

**Answer: B**



**Watch Video Solution**

15.  $\sim [NH(CH_2)NHCO(CH_2)_4CO] \sim$  is a

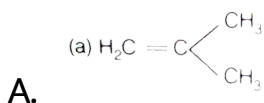
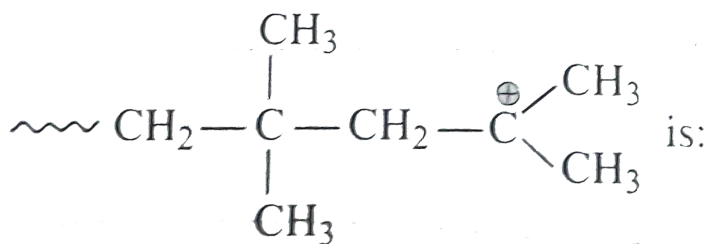
- A. copolymer

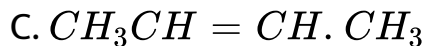
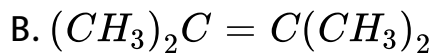
- B. addition polymer
- C. thermosetting polymer
- D. homopolymer

**Answer: A**

 **Watch Video Solution**

16. The monomer of the polymer





**Answer: A**



**Watch Video Solution**

**17. Which one of the following is a chain growth polymer?**

A. Starch

B. Nucleic acid

C. Polystyrene

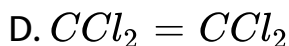
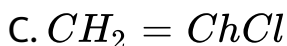
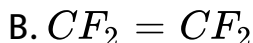
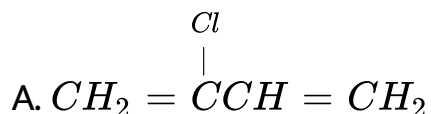
D. Protein

**Answer: C**



**Watch Video Solution**

**18.** Which one of the following monomers gives the polymer neoprene on polymerization?



**Answer: A**



**Watch Video Solution**

19. Acrilan is a hard, horny and a high melting material.

Which of the following represent its structure?

- A.  $\left( \text{CH}_2 - \underset{\text{COOC}_2\text{H}_5}{\underset{|}{\text{CH}}} - \right)_n$
- B.  $\left( \text{CH}_2 - \underset{\text{Cl}}{\underset{|}{\text{CH}}} - \right)_n$
- C.  $\left( \text{CH}_2 - \underset{\text{CN}}{\underset{|}{\text{CH}}} - \right)_n$
- D.  $\left( -\text{CH}_2 - \underset{\text{COOCH}_3}{\underset{|}{\overset{\text{CH}_3}{\text{C}}}} - \right)_n$

**Answer: C**



**Watch Video Solution**



20. Cellulose is polymer of

A. glucose

B. fructose

C. ribose

D. sucrose

**Answer: A**



**Watch Video Solution**

21. Monomer of  $\left[ \begin{array}{c} CH_3 \\ | \\ - C - CH_2 - \\ | \\ CH_3 \end{array} \right]_n$  is

A. 2-methylpropene

B. styrene

C. propylene

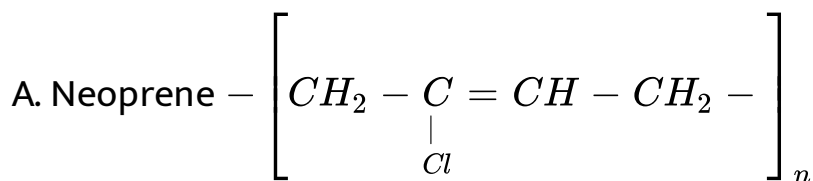
D. ethene

**Answer: A**

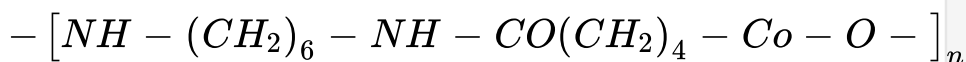


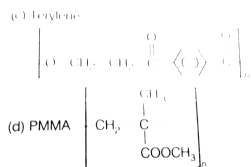
**Watch Video Solution**

**22. Which one of the following is not correctly matched ?**

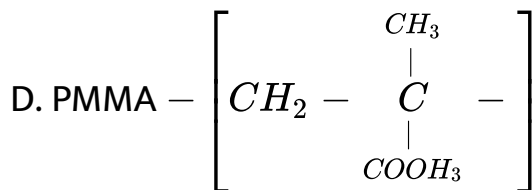


B. Nylon-66





C. Terylene



Answer: C



Watch Video Solution

23.  $\text{CH}_2 = \text{CH}_2$  is a monomer of

A. buna-S

B. teflon

C. glyptal

D. nylon-6

**Answer: B**



**Watch Video Solution**

**24.** Natural rubber is a polymer of

A. butadiene

B. ethyne

C. styrene

D. isoprene

**Answer: D**



**Watch Video Solution**

25. Terylene is a condensation polymer of ethylene glycol and

- A. benzoic acid
- B. phthalic acid
- C. salicylic acid
- D. terephthalic acid

**Answer: D**



**Watch Video Solution**

26. Which one of the following is used to make 'non-stick' cookware?

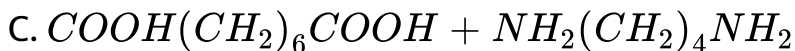
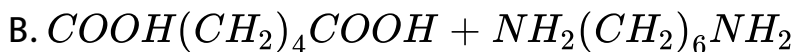
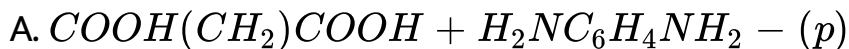
- A. PVC
- B. Polystyrene
- C. Polyethylene terephthalate
- D. Polytetrafluoro ethylene

**Answer: D**



**Watch Video Solution**

**27.** Nylon - 6,6 is a polyamide obtained by the reaction of





**Answer: B**



**Watch Video Solution**

**28.** In elastomer, intermolecular forces are

A. strong

B. weak

C. nil

D. None of the above

**Answer: B**



**Watch Video Solution**

**29.** Bakelite is prepared by the reaction between

- A. urea and formaldehyde
- B. ethylene glycol
- C. phenol and formaldehyde
- D. tetramethylene glycol

**Answer: C**



**Watch Video Solution**