



BIOLOGY

BOOKS - A2Z BIOLOGY (HINGLISH)

HUMAN HEALTH AND DISEASES

Section A Topicwise Questions Topic 1 Common Disease In Humans

1. For the prevention and control of malaria the most important measure is

A. Doors and window should be provided with wire mesh

B. Spraying of insecticides in ditches drainage areas and swamps

C. Control or eliminate the vectors and their breeding places

D. Introducing Gambusia fish in ponds

Answer: C



Watch Video Solution

2. Dysentery is caused by

A. *Entamoeba histolytica*

B. *Entamoeba coli*

C. *Escherichia coli*

D. Bacteria

Answer: D



Watch Video Solution

3. concept of crop-cafeteria and crop-scheduling was given by

A. M.S. Swaminathan

B. Norman Borlaug

C. Both A and B

D. P.Maheshwari

Answer: A



Watch Video Solution

4. Sexual phases (gametocyte) of Plasmodium occurs in :

A. salivary glands of mosquito

B. Human RBC

C. Intestine of mosquito

D. Human liver

Answer: B



Watch Video Solution

5. Blood circulation was discovered by

A. Willian Harvery

B. Hippocrates

C. Carl Landsteiner

D. Landsteiner and Weiner

Answer: A



Watch Video Solution

6. What are the benefits of being healthy ?

(a) Healthy person is more efficient at work

(b) Health increases longevity of people

(c) Health reduces infant mortality

(d) Health reduces maternal mortality

A. a,b and c

B. b,c and d

C. a,c and d

D. a,b,c and d

Answer: D



Watch Video Solution

7. The most important thing (s) for maintaining good health is / are

A. Balanced diet

B. Personal hygiene

C. Regular exercise

D. All of the above

Answer: D



Watch Video Solution

8. When the functioning of one or more or systems of the body is adversely affected, characterised by various signs and symptoms, this is called

- A. Allergy
- B. Toxicity
- C. Immunity
- D. Disease

Answer: D



Watch Video Solution

9. Match the columns I and II, and choose the correct combination from the options given.

Column I

Column II

a. Typhoid

1. Chronic inflammation of lymphatic vessels

b. Pneumonia

2. Dry scaly lesions on skin

c. Filariasis

3. Chill and high fever recurring every 3-4 days

d. Ringworm

4. Alveoli filled with fluid

e. Malaria

5. Intestinal perforations

A. $a - 1, b - 2, c - 3, d - 5, e - 4$

B. $a - 5, b - 4, c - 1, d - 2, e - 3$

C. $a - 1, b - 2, c - 1, d - 2, e - 3$

D. $a - 5, b - 4, c - 1, d - 3, e - 2$

Answer: B



Watch Video Solution

10. A wide range of organism belonging to bacteria viruses fungi protozoans helminths etc, could cause diseases in men . Such disease causing organisms are called

- A. Allergens
- B. Carcinogens
- C. Parasites
- D. Pathogens

Answer: D



Watch Video Solution

11. Which of the following human parasites require mosquito to complete their life cycle

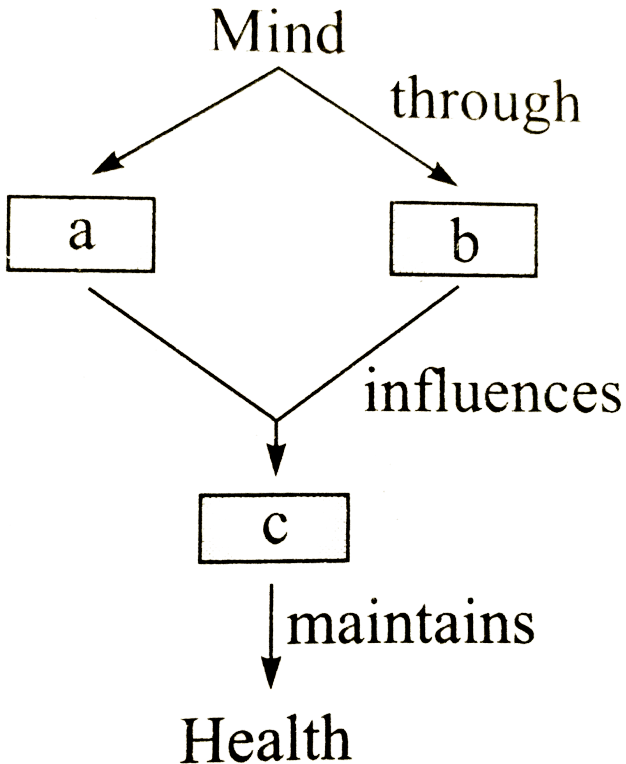
- A. *Ascaris lumbricoides* and *Wuchereria bancrofti*
- B. *Ascaris lumbricoides* and *Leishmania donovani*
- C. *Leishmania donovani* and *Plasmodium ovale*
- D. *Plasmodium ovale* and *Wuchereria bancrofti*

Answer: D



Watch Video Solution

12. Fill in the blanks :



- A. a-neural system b-endocrine system c-immune system
- B. b-neural system c- endocrine system a-immune system
- C. a-neural system c-endocrine system b-immune system
- D. c-neural system b- endocrine system a-immune system

Answer: A



Watch Video Solution

13. Chikungunya disease spreads through the bite of which mosquito

- A. *Aedes aegypti* mosquito
- B. *Culex* mosquito
- C. *Anopheles* mosquito
- D. None of the above

Answer: A



Watch Video Solution

14. Dengue fever is transmitted by

A. Anopheles mosquito

B. culex mosquito

C. Aedes mosquito

D. Tik-Tik fly

Answer: C



Watch Video Solution

15. Diseases which are easily transmitted from one person to another , are called

A. Infectious diseases

B. Non-infectious diseases

C. Deficiency diseases

D. Genetic disorders

Answer: A

 [Watch Video Solution](#)

16. Match the columns I and II and choose the correct combination from the options given.

Column I	Column II
(a) African sleeping sickness	I. <i>Sacculina</i>
(b) Dumdum fever	II. <i>Haemophilus influenzae</i>
(c) Pneumonia	III. <i>Leishmania donovani</i>
(d) Parasitic castration	IV. <i>Trypanosoma gambiense</i>
	V. <i>Leishmania tropica</i>

A. $a - IV, b - III, c - II, d - I$

B. $a - III, b - IV, c - II, d - I$

C. $a - III, b - I, c - II, d - IV$

D. $a - IV, b - III, c - I, d - V$

Answer: A



Watch Video Solution

17. Cerebral malignant malaria is caused by

A. Plasmodium falciparum

B. Plasmodium malariae

C. Plasmodium vivax

D. Plasmodium ovale

Answer: A



Watch Video Solution

18. Disease like malaria and filariasis are transmitted through insect vectors. Vectors can be controlled by introducing fish

A. Labeo

B. Gambusia

C. Hista

D. Catla

Answer: B



Watch Video Solution

19. Interal bleeding, muscular, pain, blockage of intestinal passage and anaemia are symptoms of infection by

A. Wuchereria

B. Trichophyton

C. Ascaris

D. Plasmodium

Answer: C



Watch Video Solution

20. The infective state of malarial parasite Plasmodium that enters human body is

- A. Sporozoites
- B. Merozoites
- C. Trophozoites
- D. Gametocytes

Answer: A



Watch Video Solution

21. Widal Test is carried out to test :

- A. Malaria
- B. Pneumonia
- C. Jaundice
- D. Typhoid

Answer: D



Watch Video Solution

22. Plasmodium vivax causes

- A. Benign tertian malaria
- B. Malignant tertian malaria

C. Quartan malaria

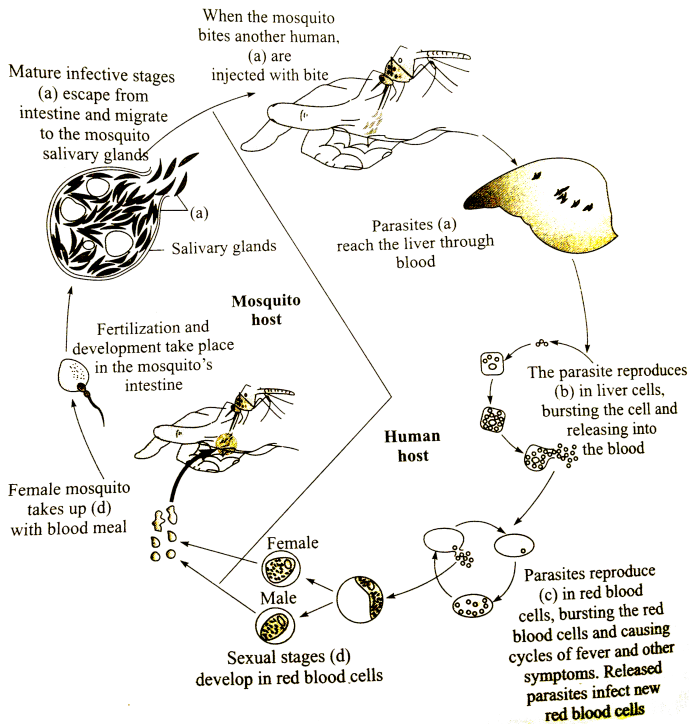
D. Mild malaria

Answer: A



Watch Video Solution

23. Recognise the figure and find out the correct matching .



A. a-gametocytes d-sporozoites , c- asexually ,b-sexually

B. d-gametocytes, d-sporozoites ,b- asexually , c-sexually

C. a-gametocytes ,d-sporozoites ,b- asexually ,c-sexually

D. d-gametocytes ,a-sporozoites, b- asexually , c- asexually

Answer: D



View Text Solution

24. Tikka is a

- A. Fungal disease
- B. Viral disease
- C. Bacterial disease
- D. Protozoan disease

Answer: A



Watch Video Solution

25. Which one is caused by virus

A. Typhoid

B. Tuberculosis

C. Polio

D. Diphtheria

Answer: C



Watch Video Solution

26. Incubation period of Plasmodium vivax is

A. 14 days

B. 28 days

C. 10 days

D. 12 days

Answer: A



Watch Video Solution

27. Which of the following is the infective stage of the malarial parasite (Plasmodium)

or

The stage of plasmodium that contains rhoptries is

A. Merozoite

B. Sporozoite

C. Gametocyte

D. Trophozoite

Answer: A



Watch Video Solution

28. Which causes oriental sore

A. Trypanosoma gambiense

B. Trypanosoma cruzi

C. Leishmania tropica

D. Leishmania donovani

Answer: C



Watch Video Solution

29. Which of the following is a commonest bacterial disease?

A. Small pox

B. Influenza

C. T.B

D. Rabies

Answer: C

 [Watch Video Solution](#)

30. *Leishmania donovani* is transmitted by

A. Glossina

B. Triatoma bugs

C. Phlebotomus

D. Culex

Answer: C

 [Watch Video Solution](#)

31. Identify the wrongly matched pair:

A. Typhoid -Widal test

B. Plague -Viral disease

C. Malignant malaria -Plasmodium falciparum

D. Common cold-Rhinovirus

Answer: B



Watch Video Solution

32. Match the columns I and II and choose the correct combination from the options given.

Column I

Column II

- | | |
|----------------|-----------------------------------|
| (1) Typhoid | (a) <i>Haemophilus influenzae</i> |
| (2) Pneumonia | (b) <i>Trichophyton</i> |
| (3) Filariasis | (c) <i>Plasmodium</i> |
| (4) Ringworm | (d) <i>Salmonella typhi</i> |
| (5) Malaria | (e) <i>Wuchereria malayi</i> |

A. 1 – d, 2 – a, 3 – e, 4 – b, 5 – c

B. 1 – a, 2 – c, 3 – b, 4 – e, 5 – d

C. 1 – b, 2 – d, 3 – e, 4 – c, 5 – a

D. 1 – b, 2 – c, 3 – e, 4 – d, 5 – a

Answer: A



Watch Video Solution

33. Which one is vehicle born/spread by housefly ?

A. Typhoid

B. Cancer

C. Rabies

D. Mumps

Answer: A



Watch Video Solution

34. A mosquito borne viral disease is

- A. Malaria and Chaga's disease
- B. Yellow fever and Dengue
- C. Filariasis and Typhus
- D. Kala-azar and Diphtheria

Answer: B



Watch Video Solution

35. Causative agent of T.B. is

- A. Salmonella
- B. Mycobacterium

C. Streptococcus

D. Pneumococcus

Answer: B



Watch Video Solution

36. A droplet infection is

A. Tetanus

B. Pneumonia

C. Syphilis

D. Typhoid

Answer: B



[Watch Video Solution](#)

37. A person preparing food like Mary Mallon can be a major source of spread of disease

- A. Pneumonia
- B. Syphilis
- C. Cancer
- D. Typhoid

Answer: D



[Watch Video Solution](#)

38. BCG vaccine provides protection against

A. Measles

B. T.B.

C. Cholera

D. Small pox

Answer: B



Watch Video Solution

39. Which of these is most infectious disease

A. AIDS

B. Hepatitis-B

C. Malaria

D. Cough and cold

Answer: D



Watch Video Solution

40. Leprosy is also called

A. Hansen's disease

B. Infantile paralysis

C. Xenopsylla

D. Yersinia

Answer: A



Watch Video Solution

41. Insect that spreads plague is

A. Anopheles

B. Pediculus

C. Xenopsylla

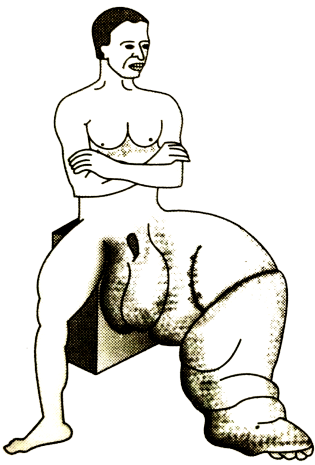
D. Yersinia

Answer: C

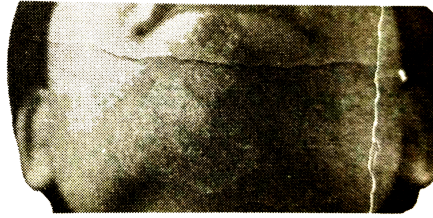


Watch Video Solution

42. People shown in the pictures are affected by certain diseases. Identify the correct options about these diseases.



(a)



(b)

- A. a-caused by *Wuchereria bancrofti* and *w. Malayi* b-caused by *Epidermophyton* and *Microsporum*
- B. a-Elephantiasis , b-ringworm
- C. a-caused by nematode, b-caused by fungi
- D. All of the above

Answer: D



Watch Video Solution

43. Which pair of disease is viral ?

A. AIDS ,syphilis

B. Typhoid, Tetanus

C. Rabies Mumps

D. Cholera ,T.B.

Answer: C



Watch Video Solution

44. Which of the following causes plague ?

A. Salmonella typhimurium

B. Trichinella spairalis

C. *Yersinia pestis*

D. *Leishmania donovani*

Answer: C



Watch Video Solution

45. 'Small pox' (*Variola*) disease is caused by

A. Virus

B. Bacterium

C. Helminth

D. Protozoan

Answer: A



[Watch Video Solution](#)

46. T.B. is cured by

- A. Griseofulvin
- B. Ubiquinone
- C. Streptomycin
- D. Eucitl

Answer: C



[Watch Video Solution](#)

47. Which one of the sexually transmitted diseases is correctly matched with its pathogen ?

- A. Urethritis -Bacillus anthracis
- B. Syphilis -Treponema pallidum
- C. Gonorrhoea -Entamoeba histolytica
- D. Soft sore -Bacillus brevis

Answer: B



Watch Video Solution

48. Leprosy is due to a

- A. Monocystis
- B. TMV
- C. Mycobacterium
- D. Salmonella

Answer: C



Watch Video Solution

49. Toxin produced by tetanus affects

- A. Voluntary muscles
- B. Involuntary muscles
- C. both voluntary and involuntary
- D. jaw bones

Answer: A



Watch Video Solution

Section A Topicwise Questions Topic 2 Innate Immunity
Acquired Immunity Active And Passive Immu

1. The immunoglobulin disulfides do not join:

- A. Two heavy chains
- B. Light chain with heavy chain
- C. Two light chains
- D. All of the above

Answer: C



Watch Video Solution

2. Antigen binding site is present on which terminal of peptide chain in antibodies

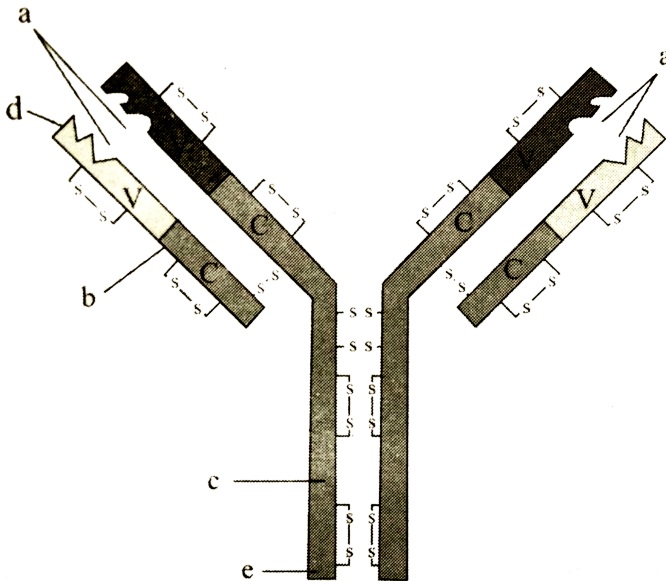
- A. N-terminal
- B. C-terminal
- C. Either N- or C- terminal
- D. In between N-and C- terminals

Answer: A



Watch Video Solution

3. Recognise the figure and find out the correct matching



- A. b-light chain c-heavy chain ,d-N terminal e-C terminal , a-
antigen binding site
- B. b-light chain c-heavy chain e-N terminal d-C terminal ,
a-antigen binding site
- C. c-liht chain b-heavy chain d-N terminal e-C terminal ,a-
antigen binding site

D. c- light chain ,b- heavy chain ,a-N temimal d-C terminal

,e-antigen binding site

Answer: A



[View Text Solution](#)

4. The overall ability of the host to fight the disease causing organisms conferred by the immune system is called

A. Allergy

B. Auto -immunity

C. Immunity

D. both B and C

Answer: C



Watch Video Solution

5. When a host is exposed to antigens which may be in the form of living or dead microbes or other proteins antibodies are produced in the host body. This type of immunity is called

- A. Active immunity
- B. Passive immunity
- C. Auto immunity
- D. Allergy

Answer: A

 [Watch Video Solution](#)

6. Antibodies are:

- A. Gamma Globulins
- B. Vitamins
- C. Albumins
- D. Sugars

Answer: A

 [Watch Video Solution](#)

7. T-lymphocytes mature in

A. Pancreas

B. Spleen

C. Bone marrow

D. Thymus

Answer: D



Watch Video Solution

8. Interferons act against viral infection by

A. Protecting other cells against virus

B. Functioning as macrophages

C. Providing antibodies

D. Directly destroying genetic material of virus

Answer: A



Watch Video Solution

9. Perspiration contains an enzyme that kills bacteria. The enzyme is:

- A. Lipase
- B. Lysozyme
- C. Protease
- D. Reductase

Answer: B



Watch Video Solution

10. Rejection of transplanted organ is prevented by regular use of

A. Cyclosporin

B. Calcitonin

C. Thrombin

D. Pyroxin

Answer: A



Watch Video Solution

11. Memory cells are formed from

A. Erythropoietic stem cells

B. Monocytes

C. T-lymphocytes

D. B-lymphocytes

Answer: C



Watch Video Solution

12. Interferons were discovered by

A. Zinder and Lederberg

B. Isaac and Lindemann

C. Temin

D. Saferman and Morris

Answer: B



Watch Video Solution

13. Characters of acquired immunity are

- A. Difference between self and non-self
- B. Specificity of antigen
- C. Retains memory
- D. All of the above

Answer: D



Watch Video Solution

14. Each immunoglobulin has two heavy chains & two light chains, the antigen binding site is present in

- A. Variable region of heavy chain
- B. Variable region of light chain
- C. Constant region of light chain
- D. Variable region of both heavy and light chain

Answer: D



Watch Video Solution

15. Which substance , on introduction into human body forms antibodies

- A. Antigen
- B. antibody
- C. Histamine
- D. both A and B

Answer: A



Watch Video Solution

16. Immune response to first encounter with an antigen is called:

- A. Primary immune response
- B. Secondary immune response
- C. Memory

D. Clonal selection

Answer: A



Watch Video Solution

17. An antiviral substance produced in response to viral infection for restricting its multiplication is

A. Antigen

B. Antivirion

C. Interferon

D. Virion

Answer: C



Watch Video Solution

18. An example of innate immunity is:

A. PMNL -neutrophils

B. B-lymphocytes

C. T-lymphocytes

D. TH cells

Answer: A

 Watch Video Solution

19. Element required to maintain structure of immunoglobulin is

A. S

B. Ca

C. P

D. Fe

Answer: A



Watch Video Solution

20. It helps in the differentiation of cells of the immune system:

A. Cortisol

B. Thyroxine

C. Thymosin

D. Steroid

Answer: C



Watch Video Solution

21. A person has developed interferons in his body. He seems to carry an infection of

A. Tetanus

B. Malaria

C. Measles

D. Typhoid

Answer: C



Watch Video Solution

22. Damage to thymus in a child may lead to

- A. Loss of cell mediated immunity
- B. Loss of antibody mediated immunity
- C. A reduction in stem cell production
- D. Reduction in haemoglobin content of blood

Answer: A

 Watch Video Solution

23. In the immune system, interferons are a part of

- A. Physiological barriers

B. Macrophages

C. Physical barriers

D. Cytokine barriers

Answer: D



Watch Video Solution

24. Macrophages are derived from

A. Neutrophils

B. Lymphocytes

C. Monocytes

D. Basophils

Answer: C



Watch Video Solution

25. The term 'active immunity' means

- A. Resistance developed before disease
- B. Resistance developed after disease
- C. Increased heart beat
- D. Increased flow of blood

Answer: B



Watch Video Solution

26. Which one of the following acts as a physiological barrier to the entry of microorganisms in human body

- A. Monocytes
- B. Skin
- C. Epithelium of urinogenital tract
- D. Tears

Answer: D



Watch Video Solution

27. Surgical removal of the thymus gland of a newborn shall result in the failure to produce:

- A. Monocytes
- B. B-lymphocytes
- C. T-lymphocytes
- D. Basophils

Answer: C

 [Watch Video Solution](#)

28. Obstacle to large scale transplantation of organs is

- A. Insufficiency of organ donors
- B. Immunological rejection of foreign bodies
- C. Religious or ethnic considerations
- D. Lack of effective surgical techniques

Answer: B



Watch Video Solution

29. A cell-coded protein that is formed in response to infection with most animal viruses is called

- A. Antigen
- B. Antibody
- C. Interferon
- D. Histone

Answer: C



Watch Video Solution

30. Antigens are present:

- A. Inside cytoplasm
- B. Inside nucleus
- C. ON nuclear envelope
- D. On cell surface

Answer: D



Watch Video Solution

31. Antibody

- A. Induces formation of antigen
- B. Helps in production of WBC

C. is formed by WBC

D. None of the above

Answer: C



Watch Video Solution

32. A compound produced by an organism which inhibits the growth of another organisms is :

A. Antigen

B. Antibody

C. Antibiotic

D. Antiallergin

Answer: B



Watch Video Solution

33. Immunity acquired after an infection is

- A. Active immunity
- B. Passive immunity
- C. Innate immunity
- D. Both B and C

Answer: A



Watch Video Solution

34. A molecule that elicits an immune response is called

- A. Antigen
- B. Antibody
- C. Carcinogen
- D. Mutagen

Answer: A



Watch Video Solution

35. Immune system is made up of

- A. Humoral system
- B. Humoral and cell mediated systems

C. Antigen induced antibodies

D. Humoral and fibrous systems

Answer: B

 [Watch Video Solution](#)

36. Macrophages are also known as

A. Phagocytes

B. B-cells

C. NK cells

D. Malaria

Answer: A



[Watch Video Solution](#)

37. Interferons have been used in the treatment of

- A. Ascariasis
- B. Influenza
- C. Filariasis
- D. Giardiasis

Answer: B



[Watch Video Solution](#)

38. How many variable segments are present in the basic structure of antibody molecules

A. One

B. Two

C. Three

D. Four

Answer: D



Watch Video Solution

39. Shape of antibody is like

A. X

B. Z

C. Y

D. O

Answer: C



Watch Video Solution

Section A Topicwise Questions Topic 3 Vaccination And Immunisation Allergies Auto Immunity And

1. Sometime due to genetic and other unknown reasons, the body attacks self-cells .this results in damage to the body and is called

- A. Allergy
- B. Auto-immunity
- C. Immunisation
- D. Contact inhibition

Answer: B



Watch Video Solution

2. Memory-based acquired immunity evolved in

- A. Higher vertebrates
- B. Lower vertebrates
- C. Lower invertebrates
- D. All of the above

Answer: A



Watch Video Solution

3. The human immune system consist of

- A. Lymphoid organs and soluble molecules
- B. Lymphoid tissues
- C. Lymphoid cells and antibodies
- D. All of the above

Answer: D



Watch Video Solution

4. the immune system plays an important role in

(a) Recognition of foreign antigens

(b) Responds to antigens and remembers them

(c) Allergic -immune diseases

(e) Orgain transplantation

A. b,c and e

B. a and b only

C. a,b,c and d

D. a,b,c,d and e

Answer: D



Watch Video Solution

5. Peyer's patches are found in

A. Small intestine

B. Large intestine

C. Stomach

D. Vermiform appendix

Answer: A

 [Watch Video Solution](#)

6. Immature lymphocytes differentiates into antigen-sensitive lymphocytes in the

A. Primary lymphoid organs

B. Secondary lymphoid organs

C. Both A and B

D. None of the above

Answer: A



Watch Video Solution

7. Fill in the blanks

Thea..... Lymphoid organs provide the sites for interaction of lymphocytes with antigen which then proliferate to becomeb.....

2 . The thymus is a lobed organ located near the heart and beneath the ...C.....

3. Spleen has a large reservoir ofd.....

A. a-primary ,b-antigen sensitive cells ,c-collar bone ,d-lymphocytes

B. a-secondary ,b-receptor cells ,c-breastbone,d-erythrocytes

C. a-parimary ,b-effector cells,c-breast bone ,d-lymphocytes

D. a-secondary ,b-effectore cells,c-breastbone ,d-erythrocytes

Answer: D

 [Watch Video Solution](#)

8. MALT is

A. macrophage associated lymphoid tissue

B. macrophages associated lymphoid tumor

C. mucosa associated lymphoid tumor

D. mucosa associated lymphoid tissue

Answer: D



Watch Video Solution

9. Lymphoid tissues are located within the lining of the

A. Respiratory tracts

B. Digestive tracts

C. Urogenital tracts

D. All of the above

Answer: D



[Watch Video Solution](#)

10. AIDS was first reported in U.S.A in

A. 1981

B. 1984

C. 1987

D. 1974

Answer: A



[Watch Video Solution](#)

11. The term 'antitoxin' refers to a preparation containing

A. Antigens to the toxin

B. antibodies to the toxin

C. Mixture of antigen and antibodies that given in tetanus

D. Memory B and R cells

Answer: B



Watch Video Solution

12. Which of the following are the reason (s) for Rheumatoid arthritis ? Choose the correct option.

(i) The ability to differentiate pathogens or foreign molecules from self cells increases.

(ii) Body attacks self cells.

(iii) More antibodies are produced in the body.

(iv) The ability to differentiate pathogens or foreign molecules from self cells is lost.

A. ii,iii and iv

B. ii and iv

C. ii, iii and iv

D. I and iv

Answer: B



Watch Video Solution

13. At new place you suddenly starts sneezing and wheezing .

The statement correctly correlate this condition

(i) This is exaggerated response of the immune system

(ii) symptoms are watery eyes and running nose

(iii) Due to the release of chemical like adrenaline steroids and histamine

(iv) Antibodies produced to these are IgE type

(v) Rheumatoid arthritis is an example

A. I,ii,ii,iv are true

B. I, iii ,iv are true

C. I,ii,iv are true

D. All are correct except v

Answer: C



Watch Video Solution

14. The principle of immunization or vaccination is based on which property of immune system

- A. To produce antibodies
- B. To retain memory
- C. To differentiate self and non-self
- D. All of the above

Answer: B



Watch Video Solution

15. Exaggerated response of immune system to certain antigen is known as :-

A. active immunity

B. passive immunity

C. auto immunity

D. allergy

Answer: D



Watch Video Solution

16. Read the statement and choose the correct option

(I) Secretion of interferons is a physiological barrier of innate immunity

II. T-lymphocytes are responsible for cell mediated immunity

III. Injection given against snake venom is a type of active immunisation

IV. Antibodies produced during allergic reactions are of IgA type

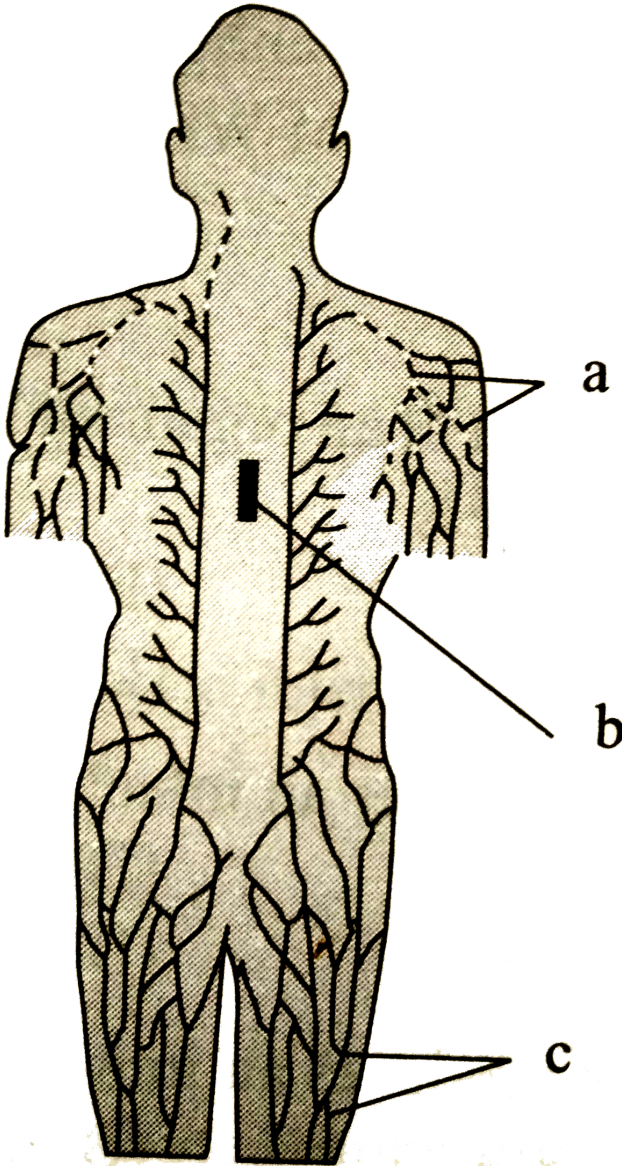
- A. I and II alone are correct
- B. II and IV alone are correct
- C. I alone is correct
- D. II alone is correct

Answer: D



Watch Video Solution

17. Recognise the figure and find out the correct matching



A. a-lymphatic vessels, b-thymus, c-lymph nodes

B. c-lymphatic vessels, a-thymus, b-lymph nodes

C. b-lymphatic vessels ,c-thymus, a-lymph nodes

D. c-lymphatic vessels,b-thymus ,a-lymph nodes

Answer: D

 [Watch Video Solution](#)

18. Antiserum contains

A. antigen

B. antibody

C. white blood corpuscles

D. red blood corpuscles

Answer: B



Watch Video Solution

19. Immunoglobulin that increases in number during allergy is

A. IgA

B. IgE

C. IgG

D. IgM

Answer: B



Watch Video Solution

20. Inflammatory response in allergy is caused by the released of one of the following by mast cells

- A. antibodies
- B. antigens
- C. histamine
- D. all of the above

Answer: C

 [Watch Video Solution](#)

21. Which is introduced during small pox vaccination ?

- A. antibodies

B. leucocytes

C. antibiotics

D. attenuated virus

Answer: D



Watch Video Solution

22. hypersensitivity to an allergy is due to

A. Increase in temperature

B. Food habits

C. Age

D. aberrant functioning of immune system

Answer: D



Watch Video Solution

23. A kind of allergy is

A. asthma

B. yellow eyes

C. mumps

D. typhoid

Answer: A



Watch Video Solution

24. A non-infectious unnatural and unusual reaction of a person to any substance or condition for which he is hypersensitive is termed as

- A. immunity
- B. allergy
- C. infection
- D. toxin

Answer: B



Watch Video Solution

25. Passive immunity is obtained through injecting

A. antibiotics

B. vaccines

C. antibodies

D. antigens

Answer: C



Watch Video Solution

26. One of the inflammatory reactions induced by histamines

is:

A. vasoconstriction of blood vessels

B. vasodilation of peripheral blood vessels

C. increased vascular permeability

D. accelerated blood clotting

Answer: B



Watch Video Solution

27. Vaccination protects a person from disease because it

A. helps in better digestion

B. increases RBC count

C. produces antibodies

D. corrects body heating system

Answer: C



Watch Video Solution

28. The treatment of snake-bite by antivenom is an example of

- A. artificial acquired active immunity
- B. artificial acquired passive immunity
- C. Natural acquired passive immunity
- D. specific natural immunity

Answer: B



Watch Video Solution

29. Match the column I and II, and choose the correct combination from the options given

Column I**Column II**

- | | |
|-----------------------|--|
| a. Natural active | p. Immunity devised by heredity |
| b. Artificial passive | q. From mother foetus through placenta |
| c. Artificial active | r. Injection of antiserum |
| d. Natural passive | s. Fighting infection naturally |
| | t. Induced vaccination |

A. a-s, b-t, c-q, d-r

B. a - p, b - q, c - r, d - t

C. a - t, b - s, c - r, d - p

D. a - s, b - r, c - r, d - q

Answer: D



Watch Video Solution

30. Which of the following properties of acquired immunity is the basis of vaccination?

A. specificity

B. memory

C. diversity

D. discrimination between self and non-self

Answer: B



Watch Video Solution

31. Which is not an autoimmune disease

A. grave's disease

B. pernicious anaemia

C. Rheumatoid arthritis

D. insomnia

Answer: D

 [Watch Video Solution](#)

32. Edward Junner prepared the vaccine for smallpox virus by using:

A. attenuated small pox virus

B. small doses of small pox virus

C. attenuated cow's pox virus

D. large does of small pox virus

Answer: C



Watch Video Solution

33. Who among the following is recognized as the father of immunology?

A. Rober koch

B. Ferdinand Kohn

C. Louis Pasteur

D. Edward jenner

Answer: D



Watch Video Solution

34. Which of the following vaccines are injected to babies at the age of $1\frac{1}{2}$, $2\frac{1}{2}$ and $3\frac{1}{2}$ months

- A. Polio and BCG
- B. BCG and DPT-Hib
- C. DPT -Hib and Polio
- D. BCG and hepatitis B

Answer: C



Watch Video Solution

35. TAB vaccine is useful against

- A. polio

B. pertussis

C. diphtheria

D. typhoid

Answer: D



Watch Video Solution

36. Vaccine against rabies was first developed by

A. jenner

B. shull

C. pasteur

D. Goror

Answer: C



Watch Video Solution

37. Vaccine against rabies was first developed by

- A. Louis pasteur
- B. Edward jenner
- C. george snell
- D. peter goror

Answer: B



Watch Video Solution

38. vaccine for tuberculosis is known as

A. TAB vaccine

B. BCG vaccine

C. DPT

D. OPV

Answer: B



Watch Video Solution

39. DPT vaccine a combination vaccine is effective in humans against

A. diabetes , polio and tetanus

B. diphtheria , plague and tetanus

C. diphtheria , pertussis and typhoid

D. diphtheria, pertussis and tetanus

Answer: D

 [Watch Video Solution](#)

Section A

1. Drugs used to quickly reduce the symptoms of allergy



A. I,ii and iii

B. I, ii and iv

C. ii and iii

D. I and ii

Answer: C



View Text Solution

2. Withdrawal syndrome is characterized by



A. I,ii, iii , and iv

B. I, ii,and iii

C. I, iii,iv and v

D. I, iii, iv and vi

Answer: D



View Text Solution

3. Which of the following drugs are normally used as medicines to help patients cope with mental illnesses like depression and insomnia?



A. a,b and c

B. b,c and d

C. a,c and d

D. a,b,c and d

Answer: A

 [View Text Solution](#)

Section A Topicwise Questions Topic 4 Aids

1. NACO stands for

- A. national AIDS control organisation
- B. national AIDS and Cancer organisation
- C. non-governmental AIDS control organisation
- D. nation Associated combined organisation

Answer: A

 [Watch Video Solution](#)

2. In our country the organisations which are doing a lot to educate people about AIDS

A. NACO

B. NGOs

C. CDRI

D. Both A and B

Answer: D



Watch Video Solution

3. AIDS was first reported ina..... and in the lastb..... years or so, it kills more thanc.....persons

A. a-india , b-25 ,c- 25×10^5

B. a-USA , b-30,c- 25×10^6

C. a-USA,b-25, c – 2.5×10^7

D. a-India , b – 25, c – 2, 5 $\times 10^6$

Answer: C



Watch Video Solution

4. Incubation period of AIDs is generally

A. 5-10 months

B. 10-12years

C. 12-18years

D. 5-10 years

Answer: D



Watch Video Solution

5. Transmission of HIV infection generally occurs by

- A. sexual contact with infected person
- B. transfusion of contaminated blood
- C. by sharing infected needles
- D. All of the above

Answer: D



Watch Video Solution

6. Full form of the AIDS is

- A. acquired immuno deficiency syndrome
- B. `acquired immunity deficiency syndrome
- C. acquired immuno deficient syndrome
- D. acquired immunity deficient syndrome

Answer: A



Watch Video Solution

7. AIDS is caused by a:

- A. Retrovirus
- B. viroid

C. DNA virus

D. protein

Answer: A



Watch Video Solution

8. Which of the following day is celebrated as 'World AIDS Day'?

A. 1st November

B. 5th June

C. 1st December

D. 31st December

Answer: C



Watch Video Solution

9. AIDS does not spread through

A. By using a syringe used by an AIDS patient

B. Through contact with clothes of an AIDS patient

C. Through a mother with AIDS to the foetus during pregnancy

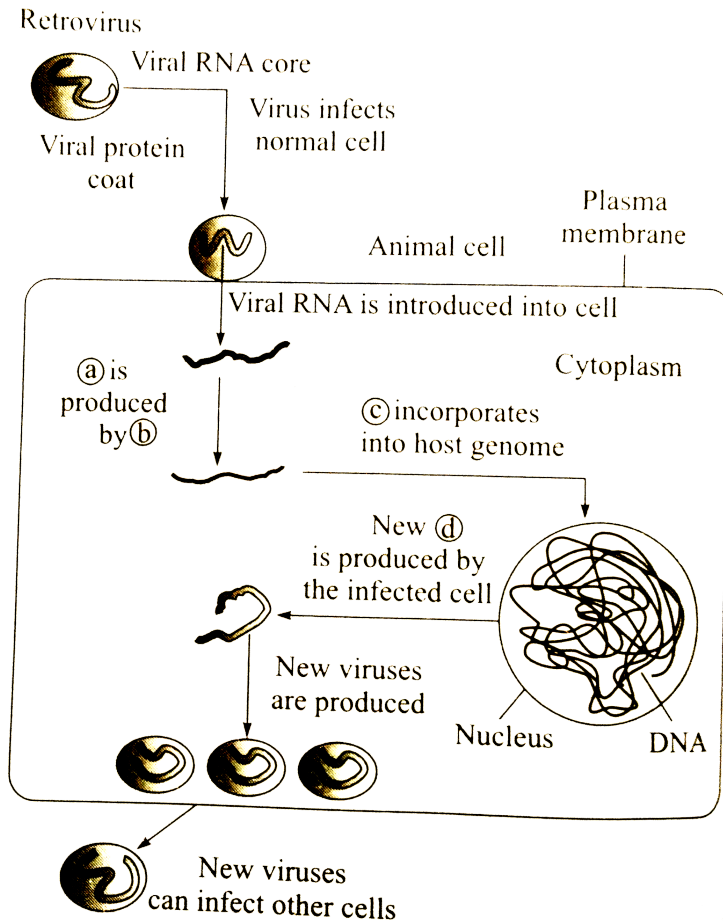
D. Through breastfeeding by a mother to a child if the mother is suffering from AIDS.

Answer: B



Watch Video Solution

10. Recognise the figure and find out the correct matching



A. a-viral RNA ,b-RNA polymerase ,c-viral DNA ,d-viral RNA

B. a-viral RNA ,b-reverse transcriptase ,c-viral RNA ,d-viral DNA

C. a-viral DNA ,b-DNA polymerase,c-viral DNA ,d-viral RNA

D. a-viral DNA ,b-reverse transcriptase,c-viral DNA,d-viral RNA

Answer: D



Watch Video Solution

11. Choose the wrong statement regarding AIDS:

A. It is an immunodeficiency diseases

B. If is caused by retrovirus HIV

C. HIV selectively infects and Kills B-lymphocytes

D. Genome RNA replicates via DNA intermediate

Answer: C



Watch Video Solution

12. Enzyme responsible for replication of HIV in macrophages is

- A. RNA polymerase
- B. DNA ligase
- C. DNA polymerase
- D. Reverse transcriptase

Answer: D



Watch Video Solution

13. Choose the wrong statement:

- A. Time lag between infection and appearance of AIDS is a few hours to a week
- B. HIV has RNA as genetic material
- C. HIV replicates in T_4 lymphocytes
- D. ARV drugs are only partially effective in AIDS treatment

Answer: A

 Watch Video Solution

14. AZT is the treatment of:

A. Malaria

B. AIDS

C. T.B.

D. Kala-azar

Answer: B



Watch Video Solution

15. AIDS, Mumps, Measles, Chicken Pox, Polio, Influenza and Rabies are caused by

A. fungi

B. Bacteria

C. Viruses

D. Protozoa

Answer: C



Watch Video Solution

16. AIDS disease was first reported in

A. Russia

B. France

C. U.S.A

D. Germany

Answer: C



Watch Video Solution

17. AIDS related complex (ARC) is a disease which leads to fever, swollen lymph nodes, night sweats, loss in weight etc. represents

- A. Initial form of AIDS
- B. Not linked to AIDS
- C. Severe form of AIDS
- D. None of the above

Answer: A



[Watch Video Solution](#)

18. Chicken pox' is caused by

A. varicella virus

B. adeno virus

C. variola virus

D. S.V. 40 virus

Answer: A



Watch Video Solution

19. Which one is correctly matched

A. Oncogenes -A geing

B. initiation factors -Amino acid activation

C. Replication fork -mRNA

D. AIDS virus -Reverse transcriptase

Answer: D



Watch Video Solution

Section A Topicwise Questions Topic 5 Cancer

1. Medicinal plant harvested from wild for anticancer compound is

- A. *Raxus baccata*
- B. *Datura stramonium*
- C. *Rauwolfia serpentina*
- D. *Ocimum sanctum*

Answer: A

2. fill in the blanks :

(i) ina.....a priedce of the suspected tissue cut into thin sections is stained and examined under microscope (.....b.....) by a pathologist .

(ii) In radiographyc.... Are used

(iii) In CT scand.....are used.

A. a-gamma ,b-histopathological studies ,c-X rayss d-
gamma rays

B. b-biopsy,a-histopathological studies ,d-x rays, c-gamma
rays

C. a-biopsy ,b-histopathological studies ,c-X rays d-X ray

D. b-biopsy ,a-histopathological studies ,c-X rays d-
gamma rays

Answer: C

 [Watch Video Solution](#)

3. Most cancers are treated by combination of :-

(a) Surgery

(b) Radiotherapy

(c) Chemotherapy

A. Surgery

B. Radiotherapy

C. Chemotherapy

D. combination of A,B and C

Answer: D



Watch Video Solution

4. Tumor cells have been shown to avoid detection and destruction by immune system Therefore the patient are given certain substance called biological response modifiers (BRM) which activates their immune system and helps in destroying the tumor. Identify the BRM

A. Alpha interferon

B. Alpha lactalbumin

C. Alpha -1 antitrypsin

D. Gamma globulin

Answer: A



Watch Video Solution

5. Match the columns I and II and choose the correct combination from the options given.

Column I

- a. Neoplasm
- b. Benign tumour
- c. Carcinomas
- d. Sarcoma
- e. Lymphomas

Column II

- 1. Hematopoietic cell tumour
- 2. Bone cartilage tissue cancer
- 3. Malignant tumour
- 4. Cancer of epithelial tissues
- 5. Noncancerous tumour
- 6. Initiation of new tumors

A. a-3,b-5,c-4,d-2,e-1

B. a-6,b-4,c-3,d-2,e-1

C. a-3,b-5,c-4,d-1,e-2

D. a-2,b-5,c-4,d-3,e-6

Answer: A



Watch Video Solution

6. Which type of cancer is found in lymph nodes and spleen

A. Carcinoma

B. Sarcoma

C. Leukemia

D. Lymphomas

Answer: D



Watch Video Solution

7. Lung cancer is caused by

- A. Coal mining
- B. Chromium fluoride
- C. Cement factory
- D. Bauxite mining

Answer: B

 [Watch Video Solution](#)

8. The treatment of cancer with X-rays or γ -rays is called:

- A. Radiotherapy

B. Chemotherapy

C. Hormone therapy

D. Immunotherapy

Answer: A



Watch Video Solution

9. The one used for treatment of thyroid cancer is

A. U-238

B. Ra-224

C. C-14

D. I-131

Answer: D



Watch Video Solution

10. Cancer is

- A. Air borne
- B. Viral disease
- C. Enviromental disorder
- D. Cellular disease

Answer: D



Watch Video Solution

11. Which of the following is an example of carcinoma?

- A. Cancer of lymph gland
- B. cancer of muscle
- C. cancer of blood
- D. melanoma cancer of skin

Answer: D



Watch Video Solution

12. The cancer of the epithelial cells is called:

- A. Carcinoma
- B. Sarcoma

C. Leukemia

D. Lipoma

Answer: A



Watch Video Solution

13. Bronchogenic carcinoma is the cancer of

A. Breast

B. Intestine

C. Lungs

D. Liver

Answer: C



[Watch Video Solution](#)

14. Burkitt's lymphoma is caused by

A. HBV

B. Reovirus

C. E-B virus

D. HV-8

Answer: C



[Watch Video Solution](#)

15. Hodgkin's disease is an example of:

A. Osteoma

B. Lymphoma

C. Leukemia

D. Carcinoma

Answer: B



Watch Video Solution

16. Cell affected by leukemia are

A. Plasma cells

B. Thrombocytes

C. Leucocytes

D. Erythrocytes

Answer: C



Watch Video Solution

17. Genes involved in cancer are

A. Cancer genes

B. Oncogenes

C. Tumour genes

D. Regulator genes

Answer: B



Watch Video Solution

18. Sarcoma is cancer of

- A. Epithelial tissue
- B. Mesodermal tissue
- C. blood
- D. Endodermal tissue

Answer: B



Watch Video Solution

19. Which is not cancer

- A. Leukemia
- B. Glaucoma

C. Carcinoma

D. Sarcoma

Answer: B



Watch Video Solution

20. Blood cancer is excess production of leucocytes . It is

Or

Blood cancer is also known as

A. Leukemia

B. Thrombosis

C. Haemophilia

D. Haemolysis

Answer: A



Watch Video Solution

21. Metastasis is:

- A. Rapid division in cancer cells
- B. Regeneration of cancer cells
- C. Spread of cancer cells to new sites
- D. All of the above

Answer: C



Watch Video Solution

22. Cancer is generally caused due to activation oftoand/or inactivation of

- A. Oncogen ,tumour suppressor gene, protooncogene
- B. Tumour sppressor gene, oncogene, protooncogene
- C. Protooncogene , oncogene , tumour supressor gene
- D. Oncogene, protooncogene, tumour suppressor gene

Answer: C



Watch Video Solution

23. Nulcear leakage is:

- A. Carcinogenic

B. Immunosuppressant

C. Autoimmunising

D. Infectious

Answer: A



Watch Video Solution

24. Treatment of cancer can be made by

A. Radiation therapy

B. Surgery

C. Immunotherapy

D. All of the above

Answer: D



Watch Video Solution

25. Metastasis is associated with:

- A. Benign tumor
- B. Malignant tumor
- C. both benign and malignant tumor
- D. Crown gall tumor

Answer: B



Watch Video Solution

26. Cervical cancer can be caused by

- A. Chlamydia
- B. Human papilloma virus
- C. Herpes Simplex virus
- D. neisseria gonorrhoeae

Answer: B



Watch Video Solution

27. Carcinoma is cancer of

- A. Lymphocytes
- B. Erythrocytes

C. Ectoderm and endoderm / Epithelial tissue

D. White blood corpuscles

Answer: C

 [Watch Video Solution](#)

Section A Topicwise Questions Topic 6 Drugs And Alcohol Abuse Adolescence And Drug Alcohol Abuse

1. The side -effects of use of anabolic steroids in males do not include

A. Increased aggressiveness

B. Mood swings

C. Liver dysfunction

D. excessive hair growth on face and body

Answer: D

 [Watch Video Solution](#)

2. Person who take drugs intravenously are much more likely to acquire serious infections like

A. AIDS

B. Hepatitis-B

C. Cancer

D. Both A and B

Answer: D



Watch Video Solution

3. A drug after administration causes depression and slows down body functions. The receptors for his drug are present in the

- A. CNS and GIT
- B. Brain
- C. Cardiovascular system
- D. spinal cord

Answer: A



Watch Video Solution

4. In the adolescent male or female premature closure of the growth centres of the long bone may result in

- A. Increased aggressiveness
- B. Kidney and liver dysfunction
- C. Mood swings
- D. Stunted growth

Answer: D



Watch Video Solution

5. Match the columns I and II and choose the correct combination from the options given

Column I

- a. Opioids
- b. Cannabinoids
- c. Coka alkaloids

Column II

- 1. Snorting and injection
- 2. Inhalation and oral ingestion
- 3. Snorting

A. a-1,b-2,c-3

B. a-3,b-2,c-1

C. a-2,b-1,c-3

D. a-1,b-3,c-2

Answer: A



Watch Video Solution

6. Erythroxylum coca is native to

A. South america

B. South africa

C. North America

D. East africa

Answer: A



Watch Video Solution

7. Which of the following drugs are often abused ?

a.Barbiturates b. Amphetamines c.Benzodiazepines d.LSD

A. a,b and c

B. b,c and d

C. a,c and d

D. a,b,c and d

Answer: A



Watch Video Solution

8. When any substance taken for a purpose other than medicinal use or in amounts / frequency that impairs one's physical physiological or psychological functions it constitutes

- A. Dependence
- B. Withdrawal syndrome
- C. Adolescence
- D. Drug abuse

Answer: D

 [Watch Video Solution](#)

9. Tobacco contains an alkaloid called

A. Nicotine

B. Morphine

C. Codeine

D. all of the above

Answer: A

 [Watch Video Solution](#)

10. which of the following age group is called adolescence

A. 12-18 years

B. 18-21years

C. 15-24 years

D. 18-25 years

Answer: A



Watch Video Solution

11. The tendency of the body to manifest a characteristic and unpleasant withdrawal syndrome if regular dose of drugs/alcohol is abruptly discontinued is

A. Addiction

B. Dependence

C. Adolescence

D. vandalism

Answer: B



Watch Video Solution

12. The immediate adverse effects of drugs and alcohol abuse are manifested in the form of

A. Reckless behaviour

B. Vandalism

C. Violence

D. All of the above

Answer: D



Watch Video Solution

13. Excessive doses of drugs may lead to coma and death due to

- A. Respiratory failure
- B. Heart failure
- C. Cerebral hemorrhage
- D. All of the above

Answer: D



Watch Video Solution

14. Which of the following substance are misused by certain sportspersons to enhance their performance?

- A. narcotic analgesics
- B. Anabolic steroids
- C. Diuretics and certain hormones
- D. all of the above

Answer: D



Watch Video Solution

15. Measures which are useful for prevention and control of alcohol and drugs abuse among adolescents

(a) Avoid undue peer pressure

(b) Education and counselling

(c) Seeking help from parents and peers

(d) Looking for danger signs

(e) Seeking professional and medical help

A. a,b and c

B. b,c and d

C. b,c , d and e

D. a,b,c,d and e

Answer: D



Watch Video Solution

16. Which is common between AIDS and Hepatitis -B ?

(i) both are viral diseases

(ii) Both are transmitted by infected needles and syringes

(iii) Both are infectious diseases

(iv) Both are chronic diseases

(v) Both are ultimately fatal

A. ii, iii, iv and v

B. I, ii, iii and v

C. I, ii, iii, iv and v

D. ii, iii, and v

Answer: C



Watch Video Solution

17. Side-effects of use of anabolic steroids in female include

(1) Masculinisation

- (ii) Premature baldness
- (iii) Breast enlargement
- (iv) Deepening of voice
- (v) Abnormal menstrual cycle
- (vi) Depression

A. I, ii , iv , v and vi

B. I, ii, v and vi

C. I, iv , v and vi

D. I, iii, iv , v and v

Answer: C



Watch Video Solution

18. Fatty liver syndrome is due to excessive intake of

A. Morphine

B. Tobacco

C. Alcohol

D. Both B and C

Answer: C



Watch Video Solution

19. Sportspeople frequently abuse drug

A. Morphine

B. Cocaine

C. Heroin

D. Cannabinoids

Answer: D



Watch Video Solution

20. Cigarette smoking causes

- A. Lung cancer
- B. baldness
- C. colour blindness
- D. none of these

Answer: A



Watch Video Solution

21. Hashish and Ganja are obtained from

- A. Erythroxyllum
- B. Nicotiana
- C. Papaver
- D. Cannabis

Answer: D



Watch Video Solution

22. Cirrhosis of liver

- A. Shrinkage and fibrosis of liver
- B. Swelling of liver

C. Cancer of liver

D. Accumulation of bile in liver due to obstruction

Answer: A

 [Watch Video Solution](#)

23. Dipsomania is

A. A type of depression

B. Insanity due to psychosis

C. Severe addiction to alcohol

D. Tendency to take much water

Answer: C

24. Recognise the figure and find out the correct matching



(a)



(b)

A. 'a' produces depressant while 'b' influences cardiovascular system

B. Receptors of 'a' are present in CNS and GIT while for 'b' are present principally in brain

C. 'a' produces smack while 'b' produces charas

D. All of the above

Answer: D



Watch Video Solution

25. Which one is obtained by acetylation of morphine

A. Smack / heroin

B. Charas

C. Cocaine

D. Benzodiazepine

Answer: A

 [Watch Video Solution](#)

26. Cocaine interferes with which neurotransmitter transportation?

- A. Serotonin
- B. Dopamine
- C. Epinephrine
- D. Acetylcholine

Answer: B

 [Watch Video Solution](#)

27. In liver alcohol is converted into a more toxic substance called

- A. Acetadehyde
- B. Formaldehyde
- C. Hydrogen cyanide
- D. Methane

Answer: A



Watch Video Solution

28. Excessive consumption of alcohol is

- A. Alcoholism

B. Drug addiction

C. Hallucination

D. Intoxication

Answer: A



Watch Video Solution

29. Heroin is got from plant of family

A. Leguminosae

B. Papaveraceae

C. Liliaceae

D. Solanaceae

Answer: B



Watch Video Solution

30. Use of Cannabis product results in

- A. Alteration in perception thoughts feelings
- B. Depressed brain activity and feeling calmness
- C. Suppressed brain function and relief pain
- D. Stimulation of nervous system increase alertness and activity

Answer: A



Watch Video Solution

31. Brown sugar is

- A. Barbiturate
- B. Heroin
- C. LSD
- D. Hashish

Answer: B



Watch Video Solution

32. Analgesic drugs

- A. form tissues
- B. Relieve pain

C. Relieve fatigue

D. Cause pain

Answer: B



Watch Video Solution

33. The drug that functions as depressant of CNS is

A. Amphetamine

B. Caffeine

C. Opium

D. Cocaine

Answer: C



[Watch Video Solution](#)

34. Narcotics are

- A. Amphetamine and caffeine
- B. Morphine and heroine
- C. LSD and cocaine
- D. Barbiturate and benzodiazepine

Answer: B



[Watch Video Solution](#)

35. Opium is obtained from part of papaver somniferum

A. Unripe fruit

B. Ripe fruit

C. Root

D. Inflorescence

Answer: A



Watch Video Solution

36. Morphine extracted from opium is

A. Latex

B. Alkaloid

C. Resin

D. Tannin

Answer: B



Watch Video Solution

Section B Assertion Reasoning Questions

1. Assertion. AIDS is caused by HIV, a retrovirus.

Reason. Retroviruses have RNA genome.

- A. If both assertion and reason are true and the reason is the correct explanation of the assertion.
- B. If both assertion and reason are true but reason is not the correct explanation of the assertion.
- C. If assertion is true but reason is false.

D. If both assertion and reason are false.

Answer: B



Watch Video Solution

2. Assertion : Sporozoites of malarial parasite enter human body by biting of new born female Anopheles whose mother was carrier.

Reason : male and female gametocyte of Malarial parasite develop in human intesline.

A. If both assertion and reason are true and the reason is the correct explanation of the assertion.

B. If both assertion and reason are true but reason is not the correct explanation of the assertion.

C. If assertion is true but reason is false.

D. If both assertion and reason are false.

Answer: D



Watch Video Solution

3. Assertion : Health for a long time was considered as a state of body and mind where there was a balance of certain humors.

Reason : This is what early Greeks like Hippocrates as well as indian Ayurveda system of medicine asserted.

- A. If both assertion and reason are true and the reason is the correct explanation of the assertion.
- B. If both assertion and reason are true but reason is not the correct explanation of the assertion.
- C. If assertion is true but reason is false.
- D. If both assertion and reason are false.

Answer: A

 [Watch Video Solution](#)

4. Assertion : Previously it was thought that persons with blackbille belonged to not personality and would have fevers.

Reason : The demonstration of normal body temperature in

persons with blackbille using thermometer approved the 'good ' humor hypthesis.

- A. If both assertion and reason are true and the reason is the correct explanation of the assertion.
- B. If both assertion and reason are true but reason is not the correct explanation of the assertion.
- C. If assertion is true but reason is false.
- D. If both assertion and reason are false.

Answer: C



Watch Video Solution

5. Assertion : Health is affected by genetic disorders.

Infections and life style

Reason : Mind and mental state can affect our health.

A. If both assertion and reason are true and the reason is the correct explanation of the assertion.

B. If both assertion and reason are true but reason is not the correct explanation of the assertion.

C. If assertion is true but reason is false.

D. If both assertion and reason are false.

Answer: B



[View Text Solution](#)

6. Assertion : Health is defined as a state of complete physical mental and social well-being .

Reason : Health is only defined as a state of physical fitness / absence of disease

- A. If both assertion and reason are true and the reason is the correct explanation of the assertion.
- B. If both assertion and reason are true but reason is not the correct explanation of the assertion.
- C. If assertion is true but reason is false.
- D. If both assertion and reason are false.

Answer: C



Watch Video Solution

7. Assertion : AIDS is infectious disease which is fatal .

Reason: Cancer is a non- infectious disease and is major cause of death.

A. If both assertion and reason are true and the reason is the correct explanation of the assertion.

B. If both assertion and reason are true but reason is not the correct explanation of the assertion.

C. If assertion is true but reason is false.

D. If both assertion and reason are false.

Answer: B



Watch Video Solution

8. Assertion : The pathogens can enter our body by various means multiply and interfere with normal vital activities resulting in morphological and functional damage.

Reason : All parasites are pathogens.

A. If both assertion and reason are true and the reason is the correct explanation of the assertion.

B. If both assertion and reason are true but reason is not the correct explanation of the assertion.

C. If assertion is true but reason is false.

D. If both assertion and reason are false.

Answer: C



Watch Video Solution

9. Assertion : In severe cases the lips and finger nails may turn gray to bluish in colour in common cold.

Reason : Dysentery plague , diphtheria and typhoid are viral diseases.

- A. If both assertion and reason are true and the reason is the correct explanation of the assertion.
- B. If both assertion and reason are true but reason is not the correct explanation of the assertion.
- C. If assertion is true but reason is false.
- D. If both assertion and reason are false.

Answer: D



Watch Video Solution

10. Assertion : Droplets resulting from cough or sneezes of an infected person are either inhaled directly or transmitted through contaminated objects such as pens , books cups, doorknobs computer keyboard or mouse and cause typhoid in a healthy person.

Reason : Pneumonia is characterised by nasal congestion and discharge sore throat hoarseness cough headache tiredness etc , which usually last for 3-7 days

A. If both assertion and reason are true and the reason is the correct explanation of the assertion.

B. If both assertion and reason are true but reason is not the correct explanation of the assertion.

C. If assertion is true but reason is false.

D. If both assertion and reason are false.

Answer: D



Watch Video Solution

11. Assertion : Houseflies acts as mechanical carriers in amoebic dysentery.

Reason : A moebiasis typhoid and ascariasis are transmitted by contaminated food and water

A. If both assertion and reason are true and the reason is the correct explanation of the assertion.

B. If both assertion and reason are true but reason is not the correct explanation of the assertion.

C. If assertion is true but reason is false.

D. If both assertion and reason are false.

Answer: B

 [Watch Video Solution](#)

12. Assertion : Pneumonia and common cold are air -borne diseases.

Reason : Dengue malaria filaria and chikungunya are vector borne diseases

A. If both assertion and reason are true and the reason is the correct explanation of the assertion.

B. If both assertion and reason are true but reason is not the correct explanation of the assertion.

C. If assertion is true but reason is false.

D. If both assertion and reason are false.

Answer: B

 [Watch Video Solution](#)

13. Assertion : A large number of infectious diseases like polio , diphtheria , pneumonia and tetanus have been controlled to a large extent by the use of vaccines.

Reason : Discovery of antibiotics and various other drugs has also enabled us to effectively treat non-infectious diseases.

- A. If both assertion and reason are true and the reason is the correct explanation of the assertion.
- B. If both assertion and reason are true but reason is not the correct explanation of the assertion.
- C. If assertion is true but reason is false.
- D. If both assertion and reason are false.

Answer: C



Watch Video Solution

14. Assertion : Innate immunity is specific type of defence that present at the time of birth

Reason : Acquired immunity is non-specific type of defence which is characterised by memory .

- A. If both assertion and reason are true and the reason is the correct explanation of the assertion.
- B. If both assertion and reason are true but reason is not the correct explanation of the assertion.
- C. If assertion is true but reason is false.
- D. If both assertion and reason are false.

Answer: D



Watch Video Solution

15. Assertion : Innate immunity is accomplished by providing different types of barriers to the entry of the foreign agents into our body.

Reason Acquired immunity is accomplished by B-lymphocytes and T-lymphocytes.

- A. If both assertion and reason are true and the reason is the correct explanation of the assertion.
- B. If both assertion and reason are true but reason is not the correct explanation of the assertion.
- C. If assertion is true but reason is false.
- D. If both assertion and reason are false.

Answer: B



16. Assertion : PMNL are type of lymphocytes and natural killer cells are type of neutrophils

Reason : macrophages in the tissues are physiological barriers.

- A. If both assertion and reason are true and the reason is the correct explanation of the assertion.
- B. If both assertion and reason are true but reason is not the correct explanation of the assertion.
- C. If assertion is true but reason is false.
- D. If both assertion and reason are false.

Answer: D

17. Assertion : Each antibody is represented as H_2L_2

Reason : Each antibody molecule has four nucleotide chains two small celled light chains and two longer called heavy chains

- A. If both assertion and reason are true and the reason is the correct explanation of the assertion.
- B. If both assertion and reason are true but reason is not the correct explanation of the assertion.
- C. If assertion is true but reason is false.
- D. If both assertion and reason are false.

Answer: C



Watch Video Solution

18. Assertion : Hepatitis -B vaccine produced from yeast .

Reason : Recombinant DNA technology has allowed the production of antigenic polypeptides of pathogen in bacteria or yeast.

- A. If both assertion and reason are true and the reason is the correct explanation of the assertion.
- B. If both assertion and reason are true but reason is not the correct explanation of the assertion.
- C. If assertion is true but reason is false.
- D. If both assertion and reason are false.

Answer: A



Watch Video Solution

19. Assertion: The substance which produces allergy are called allergens ,

Reason : Common allergens are mites in dust pollens and animal dander.

A. If both assertion and reason are true and the reason is the correct explanation of the assertion.

B. If both assertion and reason are true but reason is not the correct explanation of the assertion.

C. If assertion is true but reason is false.

D. If both assertion and reason are false.

Answer: B



Watch Video Solution

20. Assertion : Symptoms of the allergic reactions include sneezing watery eyes running nose and difficulty in breathing .

Reason : Allergy is due to chemicals like anti -histamine adrenalin and steroids.

A. If both assertion and reason are true and the reason is the correct explanation of the assertion.

B. If both assertion and reason are true but reason is not the correct explanation of the assertion.

C. If assertion is true but reason is false.

D. If both assertion and reason are false.

Answer: C

 [Watch Video Solution](#)

21. Assertion : More and more children in metro cities of India suffer from allergies and asthma due to sensitivity to the environment .

Reason : The protected environment provided to the children in early life in the metro cities.

- A. If both assertion and reason are true and the reason is the correct explanation of the assertion.
- B. If both assertion and reason are true but reason is not the correct explanation of the assertion.
- C. If assertion is true but reason is false.
- D. If both assertion and reason are false.

Answer: A

 [Watch Video Solution](#)

22. Assertion : Acquired immunity is based on the ability to differentiate foreign organisms (pathogens) from self-cells.

Reason : Higher vertebrates can distinguish foreign molecules as well as foreign organisms.

- A. If both assertion and reason are true and the reason is the correct explanation of the assertion.
- B. If both assertion and reason are true but reason is not the correct explanation of the assertion.
- C. If assertion is true but reason is false.
- D. If both assertion and reason are false.

Answer: B



Watch Video Solution

23. Assertion : The primary lymphoid organs are bone marrow and tonsils.

Reason : Secondary lymphoid organs are spleen , lymphnodes thymus Peyer's patches of small intestine and appendix.

- A. If both assertion and reason are true and the reason is the correct explanation of the assertion.
- B. If both assertion and reason are true but reason is not the correct explanation of the assertion.
- C. If assertion is true but reason is false.
- D. If both assertion and reason are false.

Answer: D



24. Assertion : Lymph nodes serve to trap the micro-organisms or other antigens which happen to get into the lymph and tissue fluid.

Reason : Antigen trapped in the lymph nodes are responsible for activation of lymphocytes present there and cause the immune response.

- A. If both assertion and reason are true and the reason is the correct explanation of the assertion.
- B. If both assertion and reason are true but reason is not the correct explanation of the assertion.
- C. If assertion is true but reason is false.
- D. If both assertion and reason are false.

Answer: B



Watch Video Solution

25. Assertion : The spleen is a large bean shaped organ.

Reason : Spleen mainly contains lymphocytes and phagocytes

- A. If both assertion and reason are true and the reason is the correct explanation of the assertion.
- B. If both assertion and reason are true but reason is not the correct explanation of the assertion.
- C. If assertion is true but reason is false.
- D. If both assertion and reason are false.

Answer: B



Watch Video Solution

26. Assertion : Spleen acts as a filter of the blood

Reason : spleen trapped blood -borne microorganisms

- A. If both assertion and reason are true and the reason is the correct explanation of the assertion.
- B. If both assertion and reason are true but reason is not the correct explanation of the assertion.
- C. If assertion is true but reason is false.
- D. If both assertion and reason are false.

Answer: A



Watch Video Solution

27. Assertion : MALT constitutes about fifteen per cent of the lymphoid tissue in human body.

Reason : The bone marrow is the main lymphoid organ where all blood cells excluding lymphocytes are produced.

- A. If both assertion and reason are true and the reason is the correct explanation of the assertion.
- B. If both assertion and reason are true but reason is not the correct explanation of the assertion.
- C. If assertion is true but reason is false.
- D. If both assertion and reason are false.

Answer: D



Watch Video Solution

28. Assertion : AIDS is not a congenital disease.

Reason : AIDS is the deficiency of immune system acquired during the lifetime of an individual.

- A. If both assertion and reason are true and the reason is the correct explanation of the assertion.
- B. If both assertion and reason are true but reason is not the correct explanation of the assertion.
- C. If assertion is true but reason is false.
- D. If both assertion and reason are false.

Answer: A



Watch Video Solution

29. Assertion : Cancer causing viruses are called oncogenic viruses have genes called cellular oncogenes.

Reason : Proto oncogenes or c-onc have been identified in the cancerous cells.

- A. If both assertion and reason are true and the reason is the correct explanation of the assertion.
- B. If both assertion and reason are true but reason is not the correct explanation of the assertion.
- C. If assertion is true but reason is false.

D. If both assertion and reason are false.

Answer: D



Watch Video Solution

30. Assertion : MRI generate three dimensional image of the internals of an object.

Reason : Antigens against cancer specific antibodies are also used for detection of certain cancers.

A. If both assertion and reason are true and the reason is the correct explanation of the assertion.

B. If both assertion and reason are true but reason is not the correct explanation of the assertion.

C. If assertion is true but reason is false.

D. If both assertion and reason are false.

Answer: D

 [Watch Video Solution](#)

31. Assertion : Majority of the chemotherapy drugs have side effects like hair loss and anemia.

Reason : Techniques of the molecular biology can be applied to detect genes in individuals with inherited susceptibility to certain cancers.

A. If both assertion and reason are true and the reason is the correct explanation of the assertion.

B. If both assertion and reason are true but reason is not the correct explanation of the assertion.

C. If assertion is true but reason is false.

D. If both assertion and reason are false.

Answer: B

 [Watch Video Solution](#)

32. Assertion : Majority of the drugs abused by humans are obtained from fungi.

Reason : Some are also obtained from flowering plants.

A. If both assertion and reason are true and the reason is the correct explanation of the assertion.

B. If both assertion and reason are true but reason is not the correct explanation of the assertion.

C. If assertion is true but reason is false.

D. If both assertion and reason are false.

Answer: D



Watch Video Solution

33. Assertion : Tobacco has been used for human beings for more than four centuries.

Reason : smoking is associated with increased incidences of cancers of lung, urinary bladder and throat bronchitis emphysema , coronary heart disease gastric ulcer. etc,

- A. If both assertion and reason are true and the reason is the correct explanation of the assertion.
- B. If both assertion and reason are true but reason is not the correct explanation of the assertion.
- C. If assertion is true but reason is false.
- D. If both assertion and reason are false.

Answer: B



Watch Video Solution

34. Assertion: HIV infection more often spreads due to conscious behaviour patterns and is not something that happens inadvertently , like pneumonia or typhoid.

Reason : Of course , infection of AIDS in blood transfusion patients newborns (from mother) etc. may takes place due to poor monitoring.

- A. If both assertion and reason are true and the reason is the correct explanation of the assertion.
- B. If both assertion and reason are true but reason is not the correct explanation of the assertion.
- C. If assertion is true but reason is false.
- D. If both assertion and reason are false.

Answer: B



Watch Video Solution

35. Assertion : Radiography CT and MRI are very useful to detect cancers of internal organs

Reason : They all use non-ionising radiations.

A. If both assertion and reason are true and the reason is the correct explanation of the assertion.

B. If both assertion and reason are true but reason is not the correct explanation of the assertion.

C. If assertion is true but reason is false.

D. If both assertion and reason are false.

Answer: C



Watch Video Solution

Section D Chapter End Test

1. An insect regarded as greatest mechanical carrier of disease is

A. Pediculus

B. Cimex

C. Musca

D. Xenopsylla

Answer: C



Watch Video Solution

2. In hot summer and cold winter, the number of malaria cases as well as Anopheles declines. Reappearance of malaria in humid warm conditions is due to

- A. Surviving malarial parasites in human carries
- B. Surviving sporozoites in surviving mosquitoes
- C. Monkeys
- D. Mosquito larvae in permanent waters

Answer: C



Watch Video Solution

3. Diphtheria is connected with

A. Lungs

B. Throat

C. Blood

D. Liver

Answer: B



Watch Video Solution

4. Diphtheria is due to toxin released by

A. Dead bacteria

B. Living bacteria

C. virus

D. Immune cells

Answer: B



Watch Video Solution

5. James Phipps and Ali Marvow are related to viral disease that has disappeared

- A. Cow pox
- B. Small pox
- C. Chicken pox
- D. Tuberculosis

Answer: B



Watch Video Solution

6. There is oozing of semisolid material which forms a tough membrane over air passage .The disease is

A. T.B

B. Tetanus

C. Pertussis

D. Diphtheria

Answer: D



Watch Video Solution

7. A disease transferred from mother to child through placenta is

A. German Measles

B. Syphilis

C. AIDS

D. All of the above

Answer: D



Watch Video Solution

8. Human papilloma virus causes

A. German measles

B. Hepatitis

C. Gonorrhoea

D. Genital warts

Answer: D



Watch Video Solution

9. Zoonotic disease transmitted to humans is

- A. Measles
- B. Diphtheria
- C. Measles
- D. Rabies

Answer: D



Watch Video Solution

10. Disease associated with secretion of toxin is

A. Tetanus

B. T.B.

C. Food poisoning

D. AIDS

Answer: A



Watch Video Solution

11. Diphtheria is characterised by

A. Suffocation

B. Hydrophobia

C. Dehydration

D. Gum bleeding

Answer: A



Watch Video Solution

12. Hepatitis B is also called:

A. Epidemic jaundice

B. Catarrhal jaundice

C. Serum jaundice

D. Infectious jaundice

Answer: C



[Watch Video Solution](#)

13. Bacterium concerned with pertussis is

- A. Bacillus
- B. Diplococcus
- C. Bordetella pertussis
- D. Mycobacterium

Answer: C



[Watch Video Solution](#)

14. A disease which causes maximum deaths in children is

- A. diphtheria
- B. Measles
- C. Tuberculosis
- D. Whooping cough

Answer: C

 [Watch Video Solution](#)

15. Hepatitis B vaccine is a:

- A. First generation vaccine
- B. Second generation vaccine
- C. Third generation vaccine
- D. Fourth generation vaccine

Answer: B



Watch Video Solution

16. Monoclonal antibodies are produced from hybrid cells, called hybridomas. The cells employed to obtain these hybridoma cells are:

- A. T-lymphocytes and myeloma cells
- B. B-lymphocytes and carcinoma cells
- C. B-lymphocytes and myeloma cells
- D. Lymphoma cells and bone marrow cells

Answer: C



Watch Video Solution

17. Vaccination works by producing

- A. Antibody which stays in blood
- B. Memory lymphocytes
- C. constant stimulation of immune system
- D. All of the above

Answer: B



Watch Video Solution

18. Bursa of Fabricius is an important organ of birds. This organ is associated with

- A. Generation of basophils
- B. Generation of B-cells
- C. Metabolism of fatty acids
- D. Production of uric acid

Answer: B



Watch Video Solution

19. Antibodies in our body are complex

- A. Lipoproteins
- B. Steroids
- C. Prostaglandins
- D. Glycoproteins

Answer: D



Watch Video Solution

20. Antibody formed of five immunoglobulin units/pentamer is

A. IgG

B. IgM

C. IgA

D. IgD

Answer: B



Watch Video Solution

21. Short term immunity is provided by

A. Lysozyme

B. Serum

C. vaccine

D. Colostrum

Answer: D



Watch Video Solution

22. Irrational fear of disease is

A. Algophobia

B. Mysophobia

C. Pathophobia

D. Haematophobia

Answer: C

 [Watch Video Solution](#)

23. Marijuana, Ganja and LSD are

A. Narcotic

B. Hallucinogens

C. Stimulants

D. All of the above

Answer: B

 [Watch Video Solution](#)

24. Suspension of attenuated pathogen that stimulates antibody formation is:

- A. Antitoxin
- B. Antibiotic
- C. Vaccine
- D. Sera

Answer: C

 [Watch Video Solution](#)

25. Study of interaction of antigen and antibody in blood is

A. Haematology

B. Serology

C. Cryobiology

D. Angiology

Answer: B



Watch Video Solution

26. Coffee and tea are

A. Fermented beverages

B. Alcoholic beverages

C. Distilled beverage

D. Nonalcoholic beverages

Answer: D



Watch Video Solution

27. Grafting of tissue or organ between individuals of different species is called

A. Xenograft

B. Isograft

C. Autograft

D. Allograft

Answer: A



Watch Video Solution

28. Which Ig is produced in primary immune response

or

Which antibody is first to be released into blood following an infection

A. IgA

B. IgE

C. IgM

D. IgG

Answer: C



Watch Video Solution

29. Cells obtained from cancerous tumours are known as

A. Lymphocytes

B. Monoclonal cells

C. Hybridomas

D. Myelomas

Answer: D



Watch Video Solution

30. Conversion of antigen into harmless insoluble matter by antibody is

A. Neutralisation

B. Opsonization

C. Activation

D. Agglutination

Answer: D



Watch Video Solution

31. Which is a unit of immune system

A. Lymphocyte

B. Erythrocyte

C. Chondrocyte

D. Parasite

Answer: A



Watch Video Solution

32. A person showing unpredictable moods, out-bursts of emotions, quarrelsome behavior and conflicts with others is suffering from

- A. Addictive disorders
- B. Schizaophrenia
- C. Borderline personality disorder
- D. Mood disorders

Answer: C



Watch Video Solution

33. The best HLA (Human Leucocyte Antigen) match for trans- plants in order to preference is:

A. Parent > sibling > twin > Unrelated donor

B. sibling > Twin > Parent > Unrelated donor

C. Twin > Sibling > Parent > Unrelated donor

D. Twin > Unrelated donor > Parent > Sibling

Answer: C



Watch Video Solution

34. Hypotensive tranquilliser drug reserpine is obtained from roots of

- A. Ferula asafoetida
- B. Rausolfia serpentina
- C. papaver somniferum
- D. curcuma longa

Answer: B

 [Watch Video Solution](#)

35. Drug addict shows symptoms of depressed brain activity, Feeling of calmness, relaxation, drowsiness. Possibly the addiction is of

- A. valium
- B. amphetamine

C. morphine / pethidine

D. marijuana / hashish

Answer: A



Watch Video Solution

36. Antibody is connected with

A. Immune system

B. digestive system

C. respiratory system

D. skeletal system

Answer: A

 [Watch Video Solution](#)

37. Antibodies are produced by

- A. Histiocytes
- B. mast cells
- C. plasma cells
- D. Fibroblasts

Answer: C

 [Watch Video Solution](#)

38. What is true about T-lymphocytes in mammals?

- A. There are three main types -cytotoxica helper and suppressor
- B. They originate in lymphoid tissues
- C. They scavenge damaged cells and cellular debris
- D. They are produced in thyroid

Answer: A



Watch Video Solution

39. A person is injected with the globulin against hepatitis.

This is

- A. Artificially acquired active immunity
- B. Naturally acquired active immunity

C. Artificially acquired passive immunity

D. Naturally acquired passive immunity

Answer: C



Watch Video Solution

40. Migration of phagocytes and other leucocytes towards the place of infection occurs through

A. Thrombosis

B. Diapedesis

C. Emboly

D. Phagocytosis

Answer: B



Watch Video Solution

41. Stimulant present in Cola ,Tea and Cocoa is

A. Cocaine

B. Caffeine

C. Amphetamine

D. Tannin

Answer: B



Watch Video Solution

42. Which one is correctly matched

- A. Cocaine - Opiate narcotic
- B. Bhang -Analgesic
- C. Reserpine -Tranquilliser
- D. Morphine - Hallucinogen

Answer: C



Watch Video Solution

43. Beer is fermented from

- A. molasses
- B. grape

C. barley

D. wheat

Answer: C



Watch Video Solution

44. Some protection is provided against carcinogens by

A. penicillic acid

B. aflatoxin

C. streptomycin

D. tocopherol / vit.E

Answer: D



[Watch Video Solution](#)

45. A communicable disease is

- A. kwashiorkor
- B. Diphtheria
- C. Diabetes
- D. Hypertension

Answer: B



[Watch Video Solution](#)

46. Filaria disease is also known as elephantiasis because

- A. Disease occurs in elephant
- B. Disease caused by elephant
- C. Disease transmitted by elephant
- D. Swelling in body parts and lymph nodes seen

Answer: D



Watch Video Solution

47. Zygote of which one is motile

- A. Hydra
- B. Plasmodium
- C. Ascaris
- D. Entamoeba

Answer: B



Watch Video Solution

48. Inflammation reaction is brought about by

- A. mast cells
- B. Macrophages
- C. Plasma cells
- D. Adipose cells

Answer: A



Watch Video Solution

49. Heroin is obtained from the plant:

A. tobacco

B. poppy / papaver

C. datura

D. cannabis

Answer: B



Watch Video Solution

50. In alcoholics, liver gets damaged as it:

A. accumulation of fats

B. storage of glycogen

C. secretion of more bile

D. detoxification of alcohol

Answer: A



Watch Video Solution

Others

1. Increased asthmatic attacks in certain seasons are due to

A. Inhalation of seasonal pollen

B. Heat and humidity

C. Low temperature

D. Eating preserved fruits

Answer: A



Watch Video Solution

2. Lysozyme found in saliva, perspiration and tears , destroys

- A. Certain fungi
- B. Certain bacteria
- C. all viruses
- D. Most virus infected cells

Answer: B



Watch Video Solution

3. Patients suffering from cholera are given saline drop as

- A. Na^+ stops transmission of nerve impulse and hence sensation of pain
- B. NaCl supplies energy
- C. Na^+ helps retain water in the body
- D. NaCl functions as fuel for cellular activities

Answer: C



Watch Video Solution

4. What is true of the psychotropic drug ?

- A. Morphine leads to delusions and disturbed emotions

B. Barbiturates cause relaxation and temporary euphoria

C. Hashish causes after though perceptions and hallucinations

D. Opium stimulates nervours system and causes hallucination

Answer: C



Watch Video Solution

5. Antigen binding site in an antibody is found between:

A. Two light chains

B. two heavy chains

C. one heavy and one light chain

D. Both B and C depending upon nature of antigen.

Answer: C



Watch Video Solution

6. To which type of barriers under innate immunity, do the saliva in the mouth and the tears the eyes, belong?

A. Physiological barriers

B. Physical barriers

C. Cytokine barriers

D. Cellular barriers

Answer: A



Watch Video Solution

7. Match the column I and II, and choose the correct combination from the options given.

Column I

- a. Amoebiasis
- b. Diphtheria
- c. Cholera
- d. Syphilis

Column II

- i. *Treponema pallidum*
- ii. Use only sterilised food and water
- iii. DPT vaccine
- iv. Use oral rehydration therapy

A. a-i,b-ii,c-iii,d-iv

B. a-ii,b-iii,c-iv,d-i

C. a-i,b-ii,c-iv,d-iii

D. a-ii,b-iv,c-i,d-iii

Answer: B



[Watch Video Solution](#)

8. Rejection of organ transplant is due to

A. NK cells

B. B-cells

C. Cytotoxic T-cells

D. Suppressor T-cells

Answer: C



[Watch Video Solution](#)

9. The most commonly used marker enzyme in clinical diagnosis of prostate cancer is:

A. Amylase

B. λ -GTPase

C. Alkaline phosphatase

D. Acid phosphatase

Answer: D



Watch Video Solution

10. A person likely to develop tetanus is immunized by administering

or

When a quick immune response is required due to infection of a deadly microbes, the patient is injected with

- A. Weakened germs
- B. Pre-formed antibodies
- C. Dead germs
- D. Wide spectrum antibodies

Answer: B

 [Watch Video Solution](#)

11. Use of antihistamines and steroid give a quick relief from

- A. Nausea
- B. Headache
- C. Allergy
- D. Cough.

Answer: C



Watch Video Solution

12. The letter "T" in T-lymphocyte refers to

- A. Thyroid
- B. Thymus
- C. Thalamus
- D. Tonsil

Answer: B



Watch Video Solution

13. What is correct ?

A. Malignant tumours may exhibit metastasis

B. Patients who have undergone surgery are given cannabinoids to relieve pain

C. Benign tumours show metastasis

D. Heroin accelerates body functions

Answer: A



Watch Video Solution

14. Neutrophils secrete chemicals for attracting neutrophils, monocytes, eosinophils, attachment to endothelium and

dilating capillaries

- A. Cytokines
- B. Monokines
- C. Leucotrienes
- D. Lymphokines

Answer: A



Watch Video Solution

15. Select the correct statement from the ones given below

- A. Morphine is often given to a person who have undergone surgery as a pain killer.

B. Chewing tobacco lowers blood pressure and heart rate.

C. Cocaine is given to patients after surgery as it stimulates recovery.

D. Barbiturates when given to criminals makes them tell the truth.

Answer: A



Watch Video Solution

16. Which of the following techniques is safest for the detection of cancer ?

A. Magnetic resonance imaging

B. Radiography

C. computed tomography

D. Histopathological study

Answer: A

 [Watch Video Solution](#)

17. Which one of the following cannot be used for preparation of vaccination against plague ?

A. Heat killed suspension of virulent bacteria

B. formaline inactivated suspension of virulent bacteria

C. Avirulent live bacteria

D. Synthetic capsular polysaccharide material

Answer: C



Watch Video Solution

18. Select the correct statement about diseases and immunisation

- A. If due to some reason B-and T-lymphocytes are damaged the body will not product antibody against a pathogen.
- B. Injection of dead/inactivated pathogens causes passive immunity
- C. Certain protozoans have been used in mass production of hepatitis-B vaccine.

D. Injection of snake antivenom against snake bite is an example of active immunisation.

Answer: A

 [Watch Video Solution](#)

19. A certain patient is suspected to be suffering from Acquired Immuno Deficiency Syndrome. Which diagnostic technique will you recommend for its detection

A. Ultrasound

B. WIDAL

C. ELISA

D. MRI

Answer: C



Watch Video Solution

20. Where will you look for the sporozoites of malarial parasite ?

A. Spleen of infected humans

B. Salivary glands of freshly moulted female Anopheles mosquito

C. Saliva of infected female Anopheles mosquito

D. Red blood corpuscles of human suffering from malaria

Answer: C



Watch Video Solution

21. Common cold is not cured by antibiotics because it is

- A. Caused by a virus
- B. Caused by Gram (+) bacterium
- C. Caused by Gram (-) bacterium
- D. Not an infectious disease

Answer: A

 [Watch Video Solution](#)

22. Which one of the following options gives the correct matching of a disease with its causative organism and mode of infection?



[Watch Video Solution](#)

23. Which is correct :common cold -droplet transmission 2. typhoid- contaminated food 3.AIDS- shaking hand 4. ringworm- using infected towels

A. 1 and 2

B. 1 and 3

C. 1,2 and 4

D. 3 and 4

Answer: C



[Watch Video Solution](#)

24. The type of immunoglobulin present in the colostrum secreted by mammary glands is:

A. IgA

B. IgG

C. IgD

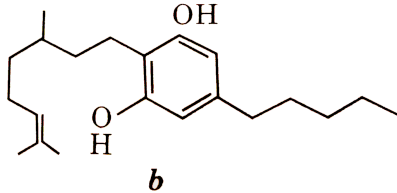
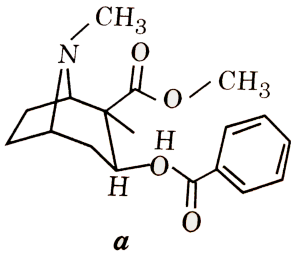
D. IgE

Answer: A



Watch Video Solution

25. Identify and select the right option giving source and use



A. a-cocaine ,*Erythroxylum coca*, Accelerates dopamine transport.

B. b-Heroin ,*Cannabis sativa* ,Depressant,slows down body functions

C. b-Cannabinoid ,*Atropa belladonna* ,Produces hallucination

D. a-Morphine ,*Papaver somniferum* ,sedative and pain killer.

Answer: D



Watch Video Solution

26. Which is correctly named , printed and described

A. *Musca domestica* -Common house lizard a reptile

B. *Plasmodium falciparum* -Protozoan pathogen causing
the most serious type of malaria

C. *Felis tigris*-Indian tiger well protected in Gir forests

D. *E.coli*-*Entamoeba coli* commonly occurring bacterium
in human intestine

Answer: B



Watch Video Solution

27. Motile elongate zygote of Plasmodium occurs in

- A. Gut of female Anopheles
- B. Salivary glands of Anopheles
- C. Human RBCs
- D. Human liver

Answer: A



Watch Video Solution

28. Common cold differs from pneumonia in, that

- A. Pneumonia is communicable while common cold is deficiency disease
- B. Pneumonia can be prevented by bacterial vaccine while common cold has no effective vaccine.
- C. Pneumonia is caused by a virus while common cold is caused by bacterium *Haemophilus influenzae*.
- D. Pneumonia infects alveoli while common cold affects nose and respiratory passage.

Answer: D



Watch Video Solution

29. Which one is not property of cancer cells

- A. They show contact inhibition
- B. Divide in uncontrolled manner.
- C. Compete with normal cells for vital nutrients
- D. Do not remain confined to area of formation.

Answer: A

 [Watch Video Solution](#)

30. Which is correctly matched ?

- A. Antitetanus and antsnake bite injections -Active immunity
- B. Polymorphonuclear leucocytes and monocytes-Cellular barrier

C. Saliva in mouth and tears in eyes-Physical barriers

D. Mucus coating epithelium urinogenital tract and HCl
in stomach- physiological barriers

Answer: B

 [Watch Video Solution](#)

31. Athlete's foot' disease is caused by

A. Tinea pedis

B. Tinia capitis

C. Candida albicans

D. Rickettsia

Answer: A



Watch Video Solution

32. Rare cancer which is marker for AIDS is

- A. Lukemia
- B. Kaposi's carcinoma
- C. Retinoblastoma
- D. Squamous cell carcinoma

Answer: B



Watch Video Solution

33. HIV destroys selectively

- A. T-cytotoxic cells
- B. T-helper cells
- C. B-memory cells
- D. B-effector cells

Answer: B



Watch Video Solution

34. Disease restriction to particular area or population is

- A. Endemic
- B. Epidemic

C. Pandemic

D. sporadic

Answer: A



Watch Video Solution

35. Which is caused by virus?

A. Diphtheria

B. Poliomyelitis

C. Tuberculosis

D. Syphilis

Answer: B



[Watch Video Solution](#)

36. Name of the disease caused by a bacterium.

- A. Plague
- B. Mumps
- C. Dengue
- D. Sleeping sickness

Answer: A



[Watch Video Solution](#)

37. The pathogen *Haemophilus influenzae* is responsible for the disease:

A. Influenze

B. Pneumonia

C. Plague

D. Diphtheria

Answer: B



Watch Video Solution

38. Ringworm'a common infectious disease in man causing dry scaly lesions on the skin and scalp is caused by

A. Bacteria

B. Round worms

C. Filarial worms

D. Fungi

Answer: D



Watch Video Solution

39. At which stage of HIV infection does one usually show symptoms of AIDS

A. When the infected retro-virus enters host cells

B. When HIV damages large number of helper T-lymphocytes

C. When the viral DNA is produced by reverse transcriptase

D. Within 15 days of sexual contact with the infected person

Answer: B

 [Watch Video Solution](#)

40. Which of the following fungi contains hallucinogens

- A. *Amanita muscaria*
- B. *Neurospora* species
- C. *Ustilago* species
- D. *Morchella esculenta*

Answer: A



[Watch Video Solution](#)

41. Which is hallucinogenic drug?

- A. Morphine
- B. Lysergic acid diethylamide
- C. Opium
- D. Caffeine

Answer: B



[Watch Video Solution](#)

42. Which is the particular type of drug that is obtained from the plant whose one flowering branch is shown below?



- A. Pain-killer
- B. Hallucinogen
- C. Depressant
- D. Stimulant

Answer: C



Watch Video Solution

43. HIV responsible for AIDS in human is a:

- A. ssDNA virus
- B. dsDNA virus
- C. ssRNA virus
- D. dsRNA virus

Answer: C



Watch Video Solution

44. infective stage of malaria in man is

- A. Ookinete

B. Sporozoite

C. Merozoite

D. Schizont

Answer: B



Watch Video Solution

45. HIV that causes, AIDS first starts destroying

A. Helper T-lymphocytes

B. Thrombocytes

C. B-Lymphocytes

D. Leucocytes

Answer: A



Watch Video Solution

46. The active form of *Entamoeba-histolytica* feeds upon

A. food in intestine

B. blood only

C. Erythrocytes , mucosa and submucosa of colon

D. mucosa and submucosa of colon only

Answer: C



Watch Video Solution

47. Which of the following immunoglobulins does constitute the largest percentage in human milk ?

A. Ig M

B. Ig A

C. Ig G

D. Ig D

Answer: B



Watch Video Solution

48. If you suspect major deficiency of antibodies in a person, to which of the following would you look for confirmatory evidence

- A. serum albumins
- B. Haemocytes
- C. Serum globulins
- D. Fibrinogen in plasma

Answer: C

 [Watch Video Solution](#)

49. Grafted kidney may be rejected in a patient due to

- A. Cell-mediated immune response
- B. Passive immune response
- C. Innate immune response
- D. Humoral immune response

Answer: A



Watch Video Solution

50. Match each disease with its correct type of vaccine

(A)	Tuberculosis	(I)	Harmless virus
(B)	Whooping cough	(II)	Inactivated toxin
(C)	Diphtheria	(III)	Killed bacteria
(D)	Polio	(IV)	Harmless bacteria

	(A)	(B)	(C)	(D)
(a)	(III)	(II)	(IV)	(I)
(b)	(IV)	(III)	(II)	(I)
(c)	(I)	(II)	(IV)	(III)
(d)	(II)	(I)	(III)	(IV)

A. (a)-(iv),(b)-(iii),(c)-(ii),(d)-(i)

B. (a)-(i),(b)-(ii),(c)-(iv),(d)-(iii)

C. (a)-(ii),(b)-(i),(c)-(iii),(d)-(iv)

D. (a)-(iii),(b)-(ii),(c)-(iv),(d)-(i)

Answer: A



Watch Video Solution

51. Which immunoglobulin is responsible for allergic response in human body ?

A. IgA

B. IgD

C. IgE

D. IgG

Answer: C



Watch Video Solution

52. In the life history of plasmodium vivax Schuffner's dots are present on the surface of

- A. Infected erythrocytes
- B. Sporozoite
- C. Ookinete
- D. Infected hepatocyte

Answer: A

 Watch Video Solution

53. Hard drug includes

A. Smack

B. Ganja

C. Charas

D. Tobacco

Answer: A



Watch Video Solution

54. Helper cells are distinguished from cytotoxic T-cells by the presence of

A. CD_2

B. $(CD_4$

C. CD_3

D. IL-2 receptor

Answer: B



Watch Video Solution

55. Antivenom injection contains preformed antibodies while polio drops that are administered into the body contain

- A. Gamma globulin
- B. Attenuated pathogens
- C. Activated pathogens
- D. Harvested antibodies

Answer: B



Watch Video Solution

56. In higher vertebrates, the immune system can distinguish self-cells and non-self. If this property is lost due to genetic abnormality and it attacks self-cells, then it leads to

- A. Auto-immune disease
- B. Active immunity
- C. Allergy response
- D. Graft rejection

Answer: A



57. Asthma may be attributed to

- A. Inflammation of the trachea
- B. Accumulation of fluid in the lungs
- C. Bacterial infection of the lungs
- D. Allergic reaction of the mast cells in the lungs

Answer: D



Watch Video Solution

58. Which of the following sets of disease is caused by bacteria

- A. Tetanus and mumps

B. Herpes and influenza

C. Cholera and tetanus

D. Typhoid and smallpox

Answer: C



Watch Video Solution

59. Transplantation of tissues/organs to save certain patients often fails due to rejection of such tissues/organs by the patient. Which type of immune response is responsible for such rejections?

A. Cell -mediated immune response

B. Hormonal immune response

C. Physiological immune response

D. Autoimmune response

Answer: A



Watch Video Solution

60. MALT constitutes about _____ percent of the lymphoid tissue in human body

A. 20 %

B. 70 %

C. 10 %

D. 50 %

Answer: D



Watch Video Solution

61. which part of poppy plant is used to btain the drug "smack"?

A. Flowers

B. Latex

C. Roots

D. Leaves

Answer: B



Watch Video Solution

62. Which of the following is not an autoimmune disease

- A. Psoriasis
- B. Rheumatoid arthritis
- C. Alzheimer's disease
- D. Vitiligo

Answer: C



Watch Video Solution

63. In which disease does mosquito transmitted pathogen cause chronic inflammation of lymphatic vessels

- A. Elephantiasis

B. Ascariasis

C. Ringworm disease

D. Amoebiasis

Answer: A



Watch Video Solution

64. According to Hugo de Vries, the mechanism of evolution is

A. Multiple step mutations

B. Saltation

C. Phenotypic variations

D. Minor mutations

Answer: B



Watch Video Solution

65. Lysis of foreign cell is initiated by antibodies of:

A. IgM

B. IgA

C. IgE

D. IgM and IgG

Answer: A



Watch Video Solution

66. The crystal of lead zirconate is a key component of

- A. electroencephalography
- B. electrocardiography
- C. magnetoencephalography
- D. sonography

Answer: D



Watch Video Solution

67. Which one of the following is a matching pair of a drug and its category?

- A. Amphetamines-stimulant

B. Lysergic acid -narcotic dimethyl amide

C. Heroin -Psychotropic

D. Benzodiazepam-pain killer

Answer: A



Watch Video Solution

68. Electron beam therapy is a kind of radiation therapy to treat

A. enlarged prostate gland

B. gall bladder stoner by breaking them

C. certain types of cancer

D. kidney stones

Answer: C



Watch Video Solution

69. Severe Acute Respiratory Syndrome (SARS)

A. is caused by a variant of pneumococcus pneumoniae

B. is caused by a variant of the common cold virus
(corona virus)

C. is an acute form of asthma

D. affects non-vegetarians much faster than the
vegetarians

Answer: B



Watch Video Solution

70. The treatment of snake-bite by antivenine is an example of

- A. artificially acquired active immunity
- B. artificially acquired passive immunity
- C. naturally acquired passive immunity
- D. specific natural immunity

Answer: B



Watch Video Solution

71. Antigen binding site in an antibody is found between:

A. two light chains

B. two heavy chains

C. one heavy and one light chains

D. either between two light chains or between one heavy and one light chain depending upon the nature of antigen

Answer: C



Watch Video Solution

72. An insect bite may result in inflammation of that spot.

This is triggered by the alarm chemicals such as

A. histamine and dopamine

B. histamine arid kinins

C. interferons and oponin

D. interferons nad histones

Answer: B



Watch Video Solution

73. A young drug addict used to show symptoms of depressed brain activity, feeling of calmnes , relaxation and drowsiness. Possibly he was taking:

A. Amphetamine

B. Marijuana

C. Pethadine

D. Valium

Answer: D



Watch Video Solution

74. A person showing unpredictable moods, out-bursts of emotions, quarrelsome behavior and conflicts with others is suffering from

- A. borderline personality disorder (BPD)
- B. mood disorder
- C. addictive disorder
- D. schizophrenia

Answer: A



[Watch Video Solution](#)

75. When children play bare footed in pools of dirty water and flood water, they may suffer from disease like:

- A. leptospirosis and bilharzia
- B. malaria amoebic dysentery and leptospirosis
- C. milharizia infective hepatitis and diarrhoea
- D. guinea worm infection elephantiasis and amoebic dysentery

Answer: A



[Watch Video Solution](#)

76. Which one of the following is a matching pair of a drug and its category?

- A. Amphetamines-stimulant
- B. Lysergic acid-narcotic dimethyl amide
- C. Heroin-psychotropic
- D. Benzodiazepam- painkiller

Answer: B



Watch Video Solution

77. An insect bite may result in inflammation of that spot.

This is triggered by the alarm chemicals such as

- A. histamine and dopamine

- B. histamine and kinins
- C. interferons and opsonin
- D. interferons and histones

Answer: B

 [Watch Video Solution](#)

78. Antigen binding site in an antibody is found between:

- A. two light chains
- B. two heavy chains
- C. one heavy and one light chain
- D. either between two light chains or between one heavy and one light chain depending upon the nature of

antigen

Answer: D



Watch Video Solution

79. A malfunction of the lymph nodes would most likely interfere with the

- A. release of carbon dioxide into the lymph
- B. filtering of glucose from the lymph
- C. release of oxygen into the lymph
- D. filtering of bacteria from the lymph

Answer: D



Watch Video Solution

80. The antigen -binding sites are present where on the antibody molecule

- A. on light chain as well as on heavy chain
- B. on light chain only
- C. on variable region and constant region of light chain
- D. on heavy chain only

Answer: A

 Watch Video Solution

81. Antigen is a substance which

- A. lowers body temperature
- B. destroys harmful bacteria
- C. triggers the immune system
- D. is used as an antidote to poison

Answer: C

 [Watch Video Solution](#)

82. Which of the following is a pentameric immunoglobulin and is produced first in a primary response to an antigen

- A. I_gG
- B. I_gM
- C. I_gA

D. I_gE

Answer: B



Watch Video Solution

83. Opium is obtained from part of papaver somniferum

A. *Oryza sativa*

B. *Coffea arabica*

C. *Thea sinensis*

D. *Papaver somniferum*

Answer: D



Watch Video Solution

84. Blood bank of body is : —

A. Heart

B. Lungs

C. Spleen

D. Liver

Answer: C



Watch Video Solution

85. Which of the following is an autoimmune disorder?

A. Myasthenia gravis

B. Osteoporosis

C. Muscular dystrophy

D. Gout

Answer: A



Watch Video Solution

86. Which one is a correct match?

A. Bhang - Analgesic

B. Cocaine - Opiate narcotics

C. Morphine - Hallucinogen

D. Barbiturate - Tranquiliser

Answer: D



Watch Video Solution

87. Which of the following is based upon the principle of antigen - antibody interaction?

A. PCR

B. ELISA

C. r-DNA technology

D. RNA

Answer: B



Watch Video Solution

88. Which of the following pathogens is not transmitted by a vector

- A. Salmonella typhi
- B. Alpha virus
- C. Plasmodium
- D. Wuchereria bancrofti

Answer: A

 [Watch Video Solution](#)

89. Which of the following is not derived from plants

- A. Opioids

B. DDT

C. Cocaine

D. Cannabinoids

Answer: B



Watch Video Solution

90. The common means of transmission of AIDS is

A. sexual intercourse

B. blood transfusion

C. placental transfer

D. all of these

Answer: D



Watch Video Solution

91. Human immuno deficiency virus (HIV) has a protein coat and a genetic material which is

- A. Single stranded DNA
- B. Single stranded RNA
- C. Double stranded RNA
- D. Double stranded DNA

Answer: B



Watch Video Solution

92. Which one of the following pairs of diseases is viral as well as transmitted by mosquitoes ?

- A. Elephantiasis and dengue
- B. Yellow fever and sleeping sickness
- C. Encephalitis and sleeping sickness
- D. yellow fever and dengue.

Answer: D



Watch Video Solution

93. Assertion : Plasmodium vivax is responsible for malaria.

Reason : Malaria is caused by polluted water.

- A. If both assertion and reason are true and the reason is a correct explanation of the assertion.
- B. In both assertion and reason are true but reason is not a correct explanation of the assertion.
- C. if the assertion is true but reason is false.
- D. If both the assertion and reason are false

Answer: C

 [Watch Video Solution](#)

94. Assertion : Histamine is related with allergic and inflammatory reactions

Reason : Histamine is a vasodilator

- A. If both assertion and reason are true and the reason is a correct explanation of the assertion.
- B. In both assertion and reason are true but reason is not a correct explanation of the assertion.
- C. if the assertion is true but reason is false.
- D. If both the assertion and reason are false

Answer: B

 [Watch Video Solution](#)

95. Assertion (A): Many visitors to the hills suffer from skin and respiratory allergy problems.

Reason (R): Conifer trees produce a large quantity of wind-borne pollen grains.

- A. If both assertion and reason are true and the reason is a correct explanation of the assertion.
- B. In both assertion and reason are true but reason is not a correct explanation of the assertion.
- C. if the assertion is true but reason is false.
- D. If both the assertion and reason are false

Answer: B



Watch Video Solution

96. Assertion (A) : Severe Acute Respiratory Syndrome (SARS) originated in China.

Reason (R): China is the most populated country of the world.

A. If both assertion and reason are true and the reason is a correct explanation of the assertion.

B. In both assertion and reason are true but reason is not a correct explanation of the assertion.

C. if the assertion is true but reason is false.

D. If both the assertion and reason are false

Answer: B



Watch Video Solution

97. Assertion (A) : Dope test is used to estimate the level of blood alcohol by analyzing the breath of persons drinking alcohol. Reason (R) : A drunken person usually feels tense and is less talkative.

A. If both assertion and reason are true and the reason is a correct explanation of the assertion.

B. In both assertion and reason are true but reason is not a correct explanation of the assertion.

C. if the assertion is true but reason is false.

D. If both the assertion and reason are false

Answer: D



Watch Video Solution

98. Assertion : LSD and marijuana are clinically used as analgesics.

Reason : Both these drugs suppress brain function.

A. If both assertion and reason are true and the reason is a correct explanation of the assertion.

B. In both assertion and reason are true but reason is not a correct explanation of the assertion.

C. if the assertion is true but reason is false.

D. If both the assertion and reason are false

Answer: C



Watch Video Solution

99. Assertion (A): A person who has received a cut and is bleeding needs to be given antitetanus treatment.

Reason(R): Antitetanus injection provides immunity by producing antibodies for tetanus.

A. If both assertion and reason are true and the reason is a correct explanation of the assertion.

B. In both assertion and reason are true but reason is not a correct explanation of the assertion.

C. if the assertion is true but reason is false.

D. If both the assertion and reason are false

Answer: C



Watch Video Solution

100. Assertion (A) : Cancer cells are virtually immortal until the body in which they reside dies.

Reason (R): Cancer is caused by damage to genes regulating the cell they division cycle.

A. If both assertion and reason are true and the reason is a correct explanation of the assertion.

B. In both assertion and reason are true but reason is not a correct explanation of the assertion.

C. if the assertion is true but reason is false.

D. If both the assertion and reason are false

Answer: B



Watch Video Solution

101. Assertion : Antigen can be easily recognized because it has antigenic determinants

Reason : The recognition ability is innate

A. If both assertion and reason are true and the reason is a correct explanation of the assertion.

B. In both assertion and reason are true but reason is not a correct explanation of the assertion.

C. if the assertion is true but reason is false.

D. If both the assertion and reason are false

Answer: B



Watch Video Solution

102. Assertion : Escherichia coli, Shigella sp. And salmonella sp. Are all responsible for diarrhoeal diseases.

Reason : Dehydration is common to all types of diarrhoeal disease and adequate supply of fluids and electrolytes should be ensured.

- A. If both assertion and reason are true and the reason is a correct explanation of the assertion.
- B. In both assertion and reason are true but reason is not a correct explanation of the assertion.
- C. if the assertion is true but reason is false.
- D. If both the assertion and reason are false

Answer: B



Watch Video Solution

103. Assertion : Cannabis sativa is a powerful anti-depressant.

Reason : Hashish and Marijuana are derived from it .

A. If both assertion and reason are true and the reason is a correct explanation of the assertion.

B. In both assertion and reason are true but reason is not a correct explanation of the assertion.

C. if the assertion is true but reason is false.

D. If both the assertion and reason are false

Answer: D



Watch Video Solution

104. Assertion: Epstein - Barr virus is an oncovirus.

Reason: It stimulates the growth of cancer.

- A. If both assertion and reason are true and the reason is a correct explanation of the assertion.
- B. In both assertion and reason are true but reason is not a correct explanation of the assertion.
- C. if the assertion is true but reason is false.
- D. If both the assertion and reason are false

Answer: A



Watch Video Solution

105. Assertion : HIV infected person are prone to opportunistic diseases.

Reason : Immune system weakens during HIV infection.

A. If both assertion and reason are true and the reason is a correct explanation of the assertion.

B. In both assertion and reason are true but reason is not a correct explanation of the assertion.

C. if the assertion is true but reason is false.

D. If both the assertion and reason are false

Answer: A



Watch Video Solution

106. Assertion . Mast cells in human body release excessive amount of inflammatory chemicals which cause allergic reactions.

Reason . Allergens in the environment on reaching human body stimulates mast cells in certain individuals

- A. If both assertion and reason are true and the reason is a correct explanation of the assertion.
- B. In both assertion and reason are true but reason is not a correct explanation of the assertion.
- C. if the assertion is true but reason is false.
- D. If both the assertion and reason are false

Answer: A



Watch Video Solution

107. Assertion : Interferons are a type of antibodies produced by body cells infected by bacteria.

Reason : Interferons stimulate inflammation at the site of injury.

A. If both assertion and reason are true and the reason is a correct explanation of the assertion.

B. In both assertion and reason are true but reason is not a correct explanation of the assertion.

C. if the assertion is true but reason is false.

D. If both the assertion and reason are false

Answer: D



Watch Video Solution

108. Assertion (A): Organ transplantation patients are given immunosuppressive drugs.

Reason (R): Transplanted tissue has antigens which stimulate the specific immune response of the recipient.

- A. If both assertion and reason are true and the reason is a correct explanation of the assertion.
- B. In both assertion and reason are true but reason is not a correct explanation of the assertion.
- C. if the assertion is true but reason is false.
- D. If both the assertion and reason are false

Answer: A



109. Assertion : Interferons are effective against viruses.

Reason : Proteins which can be synthesized only by genetic engineering are effective against viruses.

- A. If both assertion and reason are true and the reason is a correct explanation of the assertion.
- B. In both assertion and reason are true but reason is not a correct explanation of the assertion.
- C. if the assertion is true but reason is false.
- D. If both the assertion and reason are false

Answer: C

110. Assertion: The antibodies separated from serum are homogenous.

Reason : Monoclonal antibodies are homogenous immunological reagents.

- A. If both assertion and reason are true and the reason is a correct explanation of the assertion.
- B. In both assertion and reason are true but reason is not a correct explanation of the assertion.
- C. if the assertion is true but reason is false.
- D. If both the assertion and reason are false

Answer: C





[Watch Video Solution](#)

111. Assertion: Filarial worm is transmitted to humans by Culex mosquito

Reason : Culex prefers to breed in fresh water

- A. If both assertion and reason are true and the reason is a correct explanation of the assertion.
- B. In both assertion and reason are true but reason is not a correct explanation of the assertion.
- C. if the assertion is true but reason is false.
- D. If both the assertion and reason are false

Answer: C



[Watch Video Solution](#)

112. Assertion : IgM is a type of immunoglobulin which cannot cross the placenta

Reason : IgM is a pentamer immunoglobulin jointed by I-chain

- A. If both assertion and reason are true and the reason is a correct explanation of the assertion.
- B. In both assertion and reason are true but reason is not a correct explanation of the assertion.
- C. if the assertion is true but reason is false.
- D. If both the assertion and reason are false

Answer: A



113. Assertion : Artificially acquired passive immunity results when antibodies or lymphocytes produced outside the host are introduced into a host.

Reason : A bone marrow transplant given to a patient with genetic immunodeficiency is an example of artificially acquired active immunity.

- A. If both assertion and reason are true and the reason is a correct explanation of the assertion.
- B. In both assertion and reason are true but reason is not a correct explanation of the assertion.
- C. if the assertion is true but reason is false.
- D. If both the assertion and reason are false

Answer: B



Watch Video Solution