



BIOLOGY

BOOKS - UNIVERSAL BOOK DEPOT 1960 BIOLOGY (HINGLISH)

DIGESTION AND ADSORPTION

Digestion And Adsorption

1. The lower jaw in mammals is made up of

- A. Dentary
- B. Maxilla
- C. Premaxilla
- D. Palatine

Answer: A



[Watch Video Solution](#)

2. Dental formula of rabbit is

A. $\frac{1023}{1023}$

B. $\frac{3023}{3023}$

C. $\frac{1023}{2023}$

D. $\frac{2033}{1023}$

Answer:



[Watch Video Solution](#)

3. Which one has a developed canine

A. Polar bear

B. Walrus

C. Male elephant

D. Rhinoceros

Answer: B



Watch Video Solution

4. The hardest substance of vertebrate body is

or

Crown of teeth is covered by is

A. Keratin

B. Enamel

C. Dentine

D. Chondrin

Answer: B



Watch Video Solution

5. On the tongue of rabbit which type of papillae are present

- A. Circumvallate
- B. Circumvallate and foliate
- C. Foliate
- D. Fungiform

Answer: C



[Watch Video Solution](#)

6. The back flow of faecal matter in the large intestine is prevented by the presence of

- A. Serosa
- B. Sub-mucosa
- C. Muscularis
- D. Mucosa

Answer:



Watch Video Solution

7. In mammals the teeth are

or

Teeth of rabbits and humans are

- A. Epiglottis
- B. Sphincter of Oddi
- C. Ileo-Caecal valve
- D. Gastro-oesophageal sphincter

Answer: C



Watch Video Solution

8. Which of the following gastric cells indirectly help in erythropoiesis

- A. Heterodont, thecodont and diphyont
- B. Thecodont, heterodont and diphyodont
- C. Diphyodont, thecodont and heterodont
- D. Hetrodont, diphyodont and thecodont

Answer: A

 [Watch Video Solution](#)

9. Which of the following gastric glands indirectly help in erythropoiesis?

- A. Chief cells
- B. Mucous cells
- C. Goblet cells
- D. Parietal cells

Answer: D

 [Watch Video Solution](#)

10. A pair of small lymphatic tissue present at the sides of root tongue is called is

- A. Villi
- B. Lumen
- C. Rugae
- D. Crypts of Lieberkuhn

Answer: C



[Watch Video Solution](#)

11. Vomerine teeth are present is

- A. Thyroid
- B. Tonails
- C. Epiglotts Adenoids

D. Adenoids

Answer: B



Watch Video Solution

12. The function of tongue in

A. Man

B. Reptiles

C. Frogs

D. Rabbits

Answer: C



View Text Solution

13. The function of tongue is to

- A. Help in the act of swallowing
- B. Help in mixing saliva with the food
- C. Help in speaking
- D. All the above

Answer: D

 [Watch Video Solution](#)

14. The Primary dentition in human differ from permanent dentition is not having one of the following type of teeth

or

A baby boy aged two years is admitted to play school and passes through a dental observed that boy that had twenty teeth. Which teeth were absent

- A. Premolars
- B. Molars

C. Incisors

D. Canine

Answer: A



Watch Video Solution

15. Taste buds for bitter taste are found on tongue at

A. Tip

B. On basal surface

C. Posterior part

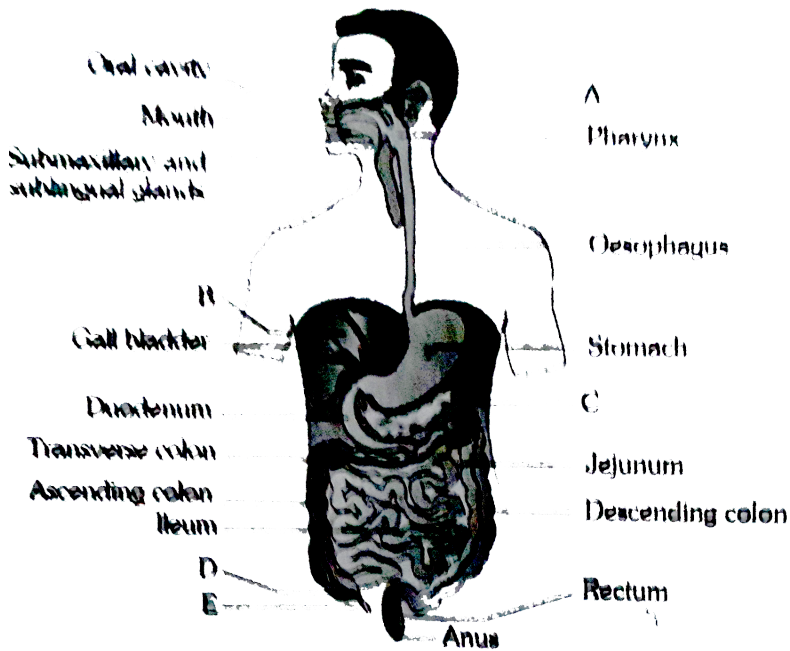
D. Lateral sides

Answer: C



Watch Video Solution

16. The given figure shows the human digestive system. Identify A, B, C,D and E respectively



A. A-Parotid gland, B-liver, C- Caecum, D-Pancreas, E-Vermiform appendix

B. A-Parotid gland, B-Caecum, C- Pancreas, D-Liver , E-Vermiform appendix

C. A-Parotid gland, B-Pancreas, C- Liver, D-Caecum,, E-Vermiform appendix

D. A-Parotid gland, B-liver, C- Pancreas, D-Caecum,, E-Vermiform appendix

Answer: D

 [Watch Video Solution](#)

17. Two friends are eating together on a dining table. One of them suddenly starts coughing while swallowing some food. This coughing would have been due to improper movement of

- A. Tongue
- B. Epiglottis
- C. Diaphragm
- D. Neck

Answer: B

 [Watch Video Solution](#)

18. If for some reason our goblet cells are non-functional, this will adversely effect

- A. Smooth movement of food down the instestine
- B. Production of somatostain
- C. Secretion of sebum from the sebaceous glands
- D. Maturation of sperms

Answer: A



[Watch Video Solution](#)

19. In mammals the digestion of starch starts from

- A. Mouth
- B. Stomach
- C. Oesophagus

D. Doudenum

Answer: A



[Watch Video Solution](#)

20. If the dental formul of Rabbit is 2033/1023. What does it show

- A. Total number of teeth in Rabbit is 15
- B. Number of total incisors in Rabbit is 3
- C. Diastema is present between incisors & premolars
- D. In the formula 2033 is for adult and 1023 is for young ones

Answer: C



[Watch Video Solution](#)

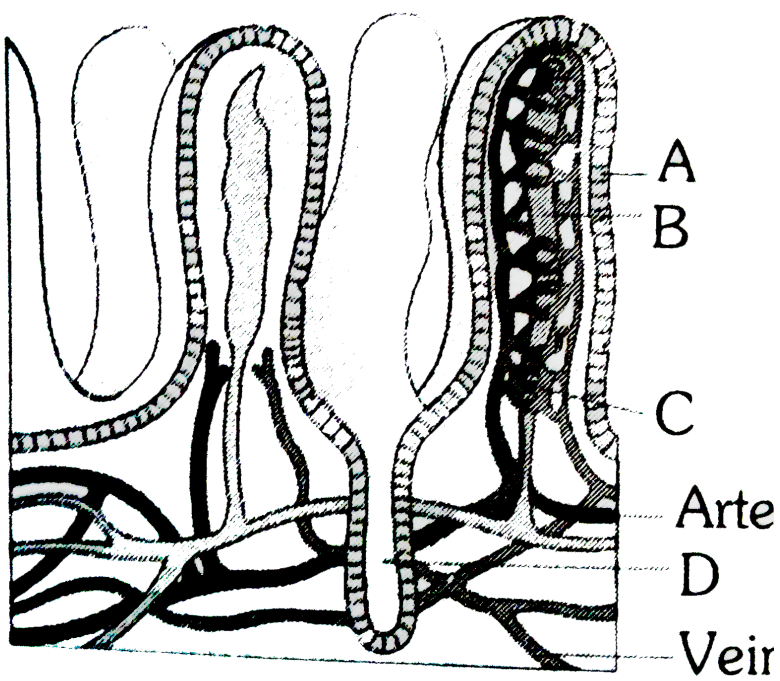
21. Which of the following teeth are lophodont

- A. Incisor and canine
- B. Premolar and molar
- C. Canine and premolar
- D. Premolar and incisor

Answer: B

 [Watch Video Solution](#)

22. The given figure shows a section of small intestinal mucosa showing villi, Identify A to D



A. A-Crypts, B-Lacteal, C-Capillaries, D-Villi

B. A-Villi, B-Lacteal, C-Crypts, D-Capillaries

C. A-Lacteal, B-Villi, C-Capillaries, D-Crypts

D. A-Villi, B-Lacteal, C-Capillaries, D-Crypts

Answer: D



Watch Video Solution

23. Tusk of an elephant is an enormously enlarged

- A. Upper canine
- B. Lower incisor
- C. Upper incisor
- D. Lower canine

Answer: C



Watch Video Solution

24. The type of muscle present in the alimentary canal is

- A. Smooth muscle fibre
- B. Striped muscle fibre
- C. Cardiac muscle fibre
- D. Both a and b

Answer: A



[Watch Video Solution](#)

25. Which of the following is vestigial teeth found in human

- A. Incisors
- B. Premolar
- C. Diphyodont
- D. Wisdom tooth

Answer: D



[Watch Video Solution](#)

26. Teeth in frog are

- A. Acrodont
- B. Homodont
- C. Polyphyodont

D. All the above

Answer: D



Watch Video Solution

27. Puly cavity if teeth is linked by

A. Odotoblast

B. Chondroblast

C. Osteoblast

D. Amyloblast

Answer: A



Watch Video Solution

28. Lacteals are central lymph vessls which are found in

- A. Liver
- B. Pancreas
- C. Villi
- D. Spleen

Answer: C

 [Watch Video Solution](#)

29. In the wall of alimentary canal which is/are is true sequence from outer to inner

- A. Serosa, longitudinal muscle, mucosa, sub mucosa
- B. Mucosa, serosa, long muscle
- C. Serosa, long muscle, circular, sub-mucosa, mucosa
- D. Serosa, long muscle, circular, sub-mucosa, mucosa

Answer: C

 [Watch Video Solution](#)

30. Dental formula of human being

A. I_2, C_2, P_1, M_3

B. I_2, C_2, P_2, M_3

C. I_3, C_1, P_2, M_2

D. I_2, C_2, P_3, M_1

Answer: B

 [Watch Video Solution](#)

31. Some of the animals eat their feces to digest the cellulose contents again, such animals are known as

A. Sanguivorous

B. Frugivorous

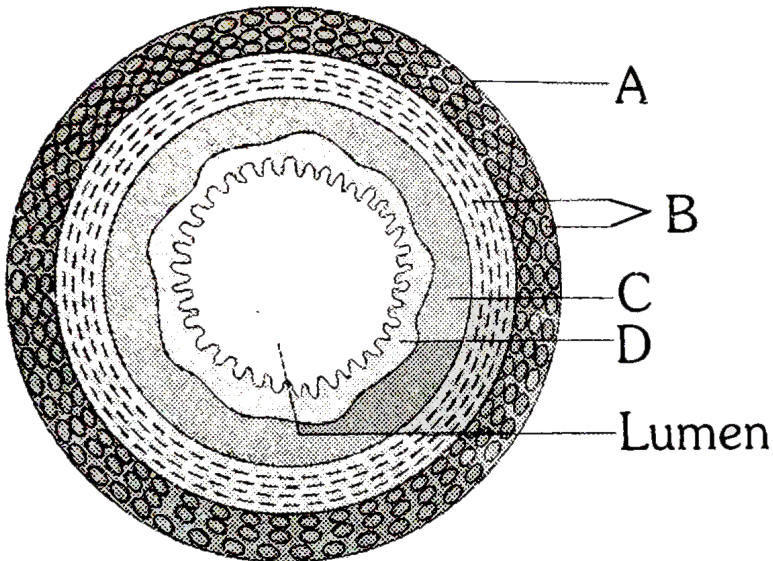
C. Coprophagous

D. Deteritvorous

Answer: C

 Watch Video Solution

32. The given diagram inductes the TS of Gut, Identify A, B and C



A. A-Serosa, B-Submucosa, C-Muscularis, D-Mucosa

B. A-Serosa, B-Muscularis, C-Mucosa, D-Submucosa

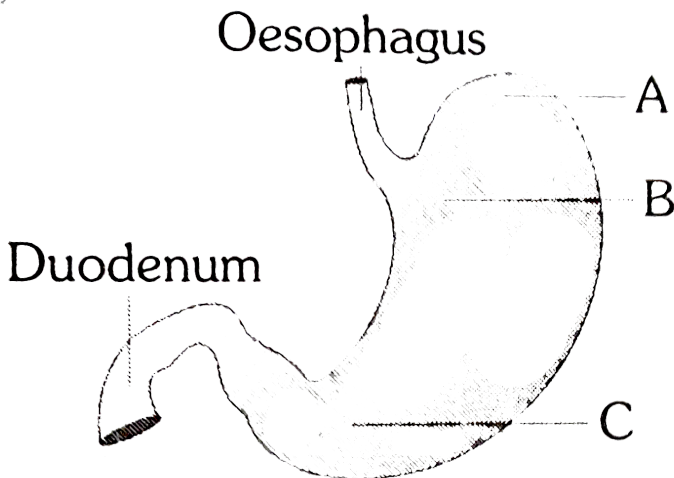
C. A-Muscularis, B-Serosa, C-Submucosa, D-Mucosa

D. A-Serosa, B-Muscularis, C-Submucosa, D-Mucosa

Answer: D

 [Watch Video Solution](#)

33. The given diagram represent anatomical region of human stomach. Identify A, B and C



A. A-Fundus, B-Cardiac, C-Pyloric

B. A-Pyloric, B-Fundus, C-Cardiac

C. A-Cardiac,, B-Fundus,C-Pyloric

D. A-Fundus, B-Pyloric,C-Cardiac

Answer: B



[Watch Video Solution](#)

34. The muscular contraction in the alimentary canal is known as

A. Systole

B. Diastole

C. Peristalsis

D. Metachorna

Answer: C



[Watch Video Solution](#)

35. Fundic part of stomach is

- A. Present in rabbit but absent in frog
- B. Absent in rabbit but present in frog
- C. Absent in both rabbit and frog
- D. Present in both rabbit and frog

Answer: A



Watch Video Solution

36. HCl is secreted by

- A. Zymogen cells
- B. Oxyntic cells
- C. Kupffer cells
- D. Mucous cells

Answer: B



Watch Video Solution

37. "Chief cells" or "Zymogen cells" secrete the enzymes of the gastric juice, are found in the

- A. Isthmus of the gland
- B. Neck of the tabular gland
- C. Base of the tubular reigon
- D. All the above

Answer: C



Watch Video Solution

38. Inner lining of gut, stomach and liver is made of

A. Simple squamous epithelium

B. Simple columnar epithelium

C. Simple cuboidal epithelium

D. Compound epithelium

Answer: B



[Watch Video Solution](#)

39. The mucosal lining of the oesophagus of mammals is made up of

A. Simple columnar epithelium

B. Squamous epithelium

C. Stratified columnar eqithelum

D. Stratified columnar epithelium

Answer: B



[Watch Video Solution](#)

40. Mucosa is thickest in

- A. Stomach
- B. Oesophagus
- C. Intestine
- D. Rectum

Answer: B



[Watch Video Solution](#)

41. Which of the following is correct pairing of the site of action and the substrate of renin

- A. Stomach-Casein
- B. Stomach-Fat
- C. Small Intestine-Protein

D. Mouth-Starch

Answer: A



Watch Video Solution

42. The site of protein digestion is

or

A rabbit eats a lot of grass. Then its digestion starts in

A. Gullet

B. Stomach

C. Small Intestine

D. Oral Cavity

Answer: B



Watch Video Solution

43. The stomach of ruminants is mainly divided into four parts, but in camel which one part is missing

A. Abomasum

B. Omasum

C. Reticulum

D. Rumen

Answer: B



[Watch Video Solution](#)

44. Match column I with column II and then choose the correct option

{:(,,"Column-I",,"Column-II"),(,(A),"Goblet cells",(1),"Antibacterial agent"),(, (B),"Lysozyme",(2),"Mucus"),(,(C),,"Saliva",(3),"HCl"),(,(D),"Oxyntic cells", (4),"Sublingual gland "):}

A. A-3,B-1,C-4,D-2

B. A-1,B-3,C-4,D-2

C. A-2,B-3,C-1,D-4

D. A-2,B-1,C-4,D-3

Answer: E



[Watch Video Solution](#)

45. During chain elongation peptide bond is formed between carboxyl group of 1st amino acid group of 2nd amino acid by

A. Aminoacyl transferase

B. Aminoacyl synthetase

C. Peptidyl transferase

D. Chloramphenicol

Answer: C



[View Text Solution](#)

46. Peyer's patches contain

- A. Mucus
- B. Sebum
- C. Lymphocytes
- D. Red blood cells

Answer: C



Watch Video Solution

47. Narrower distal end of stomach is called

- A. Cardiac
- B. Duodenum
- C. Pharynx
- D. Pylorus

Answer: D



[Watch Video Solution](#)

48. Aggregates of lymphoid tissue present in the distal portion of the small intestine are known as

- A. Villi
- B. Peyer's patches
- C. Rugae
- D. Choroid plexus

Answer: B



[Watch Video Solution](#)

49. Wisdom teeth are

A. Last molars

B. Last premolars

C. Incisors

D. Canines

Answer: A



Watch Video Solution

50. Peyer's patches are found on the ileum in

A. Fishes

B. Reptiles

C. Birds

D. Mammals

Answer: D



Watch Video Solution

51. Water is largely absorbed in

- A. Stomach
- B. Oesophagus
- C. Small Intestine
- D. Colon(Large Intestine)

Answer: D



Watch Video Solution

52. Crypts of Lieberkuhn are found in between the villi. They have secrete

- A. Glucogon
- B. Succus entericus
- C. Insulin

D. None

Answer: B



Watch Video Solution

53. Both the crown and root of a tooth is covered by a layer of bony hard substance called

A. Enamel

B. Dentine

C. Bony socket

D. Cementum

Answer: B



Watch Video Solution

54. Which of the following nerves innervates alimentary canal

A. Oculomotor

B. Abducens

C. Trigeminal

D. Vagus

Answer: D



[Watch Video Solution](#)

55. Goblet cells are

A. Unicellular mucous gland

B. Multicellular mucous gland of stomach

C. Tubula-velolar gland

D. All the above

Answer: A



[Watch Video Solution](#)

56. Which of the following is correct regarding diastema

- A. Gap between bones
- B. Gap between the teeth/Absence of certain teeth
- C. Gap between nerves
- D. Gap between cells

Answer: B



[Watch Video Solution](#)

57. Brunner's gland are found in which of the following layers

- A. Submucosa of stomach

B. Mucosa of ileum

C. Submucosa of duodenum

D. Mucosa of oesophagus

Answer: C



Watch Video Solution

58. Pepsinogen is secreted by

A. Chief cells

B. Parietal cells

C. Gastric glands

D. Intestinal cells

Answer: A



Watch Video Solution

59. Intestinal villi are mainly concerned with

OR

The process by which digested food of the alimentary canal passes through its mucous membrane into circulatory system is called as

- A. Assimilation
- B. Secretion
- C. Ultrafiltration
- D. Absorbtion

Answer: D



[Watch Video Solution](#)

60. Crypts of Lieberkuhn is example for

- A. Simple tubular gland
- B. Coiled tubular gland

C. Compound alveolar gland

D. Compound tubular gland

Answer: A



Watch Video Solution

61. Brush bordered epithelium is found in

A. Trachea

B. Stomach

C. Small Intestine

D. Fallopian tube

Answer: C



Watch Video Solution

62. Vermiform appendix is a part of

- A. Alimentary canal
- B. Nervous system
- C. Vascular system
- D. Reproductive system

Answer: A



[Watch Video Solution](#)

63. How many kind of cells are found in islet of Langerhans

- A. 1
- B. 2
- C. 3
- D. 4

Answer: D

 [Watch Video Solution](#)

64. Which of the following statement is not correct

- A. Goblet cells are present in the mucosa of stomach and secrete mucus
- B. Oxyntic cells are present in the mucosa of stomach and secrete HCl
- C. Acini are present in the pancreas and secrete carboxypeptidase
- D. Brunner's glands are present in the submucosa of stomach and secrete pepsinogen

Answer: D

 [Watch Video Solution](#)

65. Fat digestion is facilitated by

- A. Bile juice
- B. Pancreatic juice
- C. Gastric juice
- D. None of these

Answer: A

 [Watch Video Solution](#)

66. The predominant antibody in saliva is

- A. IgF
- B. IgA
- C. IgM
- D. IgD

Answer: B

 [Watch Video Solution](#)

67. In humans, Glisson capsule is associated with

- A. Digestive system
- B. Excretory system
- C. Nerous system
- D. Reproductive system

Answer: A



Watch Video Solution

68. Parotid salivary gland are present

- A. Below the tongue
- B. Below the ear
- C. Below the eye orbit

D. In the angular between two jaws

Answer: B



Watch Video Solution

69. Pissiform cells loaded with zymogen granules can be seen in

A. Liver

B. Pancreas

C. Ovary

D. Kidney

Answer: B



View Text Solution

70. Pancreatic juice contains

- A. Trypsin, lipase and maltase
- B. Pepsin, trypsin and maltase
- C. Trypsin, chymotrypsin, amylase and lipase
- D. Trypsin, pepsin and amylase

Answer: C

 [Watch Video Solution](#)

71. Gastric juice of infants contains

- A. Nuclease, pepsinogen, lipase
- B. Pepsinogen, lipase, renin
- C. Amylase, renin, pepsinogen
- D. Maltase, pepsinogen, renin

Answer: B

 [Watch Video Solution](#)

72. Ptyalin is

- A. Strongly acidic
- B. Slightly acidic
- C. Slightly neutral
- D. Strongly alkaline

Answer: B



Watch Video Solution

73. Liver in our body stores

- A. Vitamin A
- B. Vitamin D
- C. *Vita* min B_{12}

D. All the above

Answer: D



View Text Solution

74. Argentaffin cells are found in

A. Pancreas

B. Interna ear

C. Gastric glands

D. Liver

Answer: C



Watch Video Solution

75. Ph of gastric juice is

A. 2

B. 4

C. 6

D. 8

Answer: A



Watch Video Solution

76. Which of the following guards the opening of hepatopancreatic duct into the duodenum

A. Semilunar valve

B. Ileocaecal valve

C. Pyloric sphincter

D. Sphincter of Oddi

Answer: D

 [Watch Video Solution](#)

77. In pancreas, pancreatic juice and hormones are secreted by

- A. Same cell
- B. Different cells
- C. Same cells at different time
- D. None of these

Answer: B

 [Watch Video Solution](#)

78. The Ph of amylases present in saliva is

- A. 6
- B. 6.8
- C. 7.2

D. 8

Answer: B



Watch Video Solution

79. Characteristic of mammalian liver is

- A. kupffer's cells and leucocytes
- B. Leucocytes and cannaliculae
- C. Glisson's capsules and Kupffer, cells
- D. Glisson's capsules and leucocytes

Answer: C



Watch Video Solution

80. The Ph of succus entericus is

OR

In intestine, Ph value is

A. 7.6

B. 6.6

C. 5.6

D. 2

Answer: A



[Watch Video Solution](#)

81. Succus entericus is the name given to

A. Junction between ileum and large intestine

B. Intestinal juice

C. Swelling in the gut

D. Appendix

Answer: B



Watch Video Solution

82. Liver of rabbit is made up of

A. 4 lobes

B. 6lobes

C. 5lobes

D. 7lobes

Answer: B



Watch Video Solution

83. Which of the following statement is correct

- A. Argentaffin cells produces serotonin
- B. Villikin is secreted by large intestine
- C. In cheilosis, deficiency nutrient is nicotinamide
- D. Bleeding disease occur due to deficiency of vitamin E.

Answer: B

 [View Text Solution](#)

84. Which of the following is the symptom of Ulcerative colitis

- A. Watery stools containing blood and mucus
- B. Difficulty in swallowing
- C. Loss of appetite
- D. Eye turn yellow

Answer: C

 [View Text Solution](#)

85. Which one of the following is not the reason for very high load of bilirubin in a newborn

- A. Excessive red blood corpuscles in the newborn burst, releasing the bilirubin
- B. The liver of the newborn is too young to cope up with the heavy load of bilirubin
- C. Mother's milk contain a high amount of bilirubin
- D. Insoluble bilirubin in the intestine is reabsorbed by the blood

Answer: A



[View Text Solution](#)

86. Saliva is secreted from

- A. Submaxillary and sublingual glands

B. Gastric gland

C. Pancreas

D. Gall bladders

Answer: B



Watch Video Solution

87. The number of salivary glands in man is

A. Two paris

B. Three pairs

C. Four pairs

D. Five pairs

Answer: B



Watch Video Solution

88. Ptyalin is an enzyme of

- A. Salivary juice
- B. Pancreatic juice
- C. Intestinal juice
- D. All the above

Answer: A



[Watch Video Solution](#)

89. The enzymes responsible for the digestion of starch in food on man is present in

- A. The salivary and gastric secretions
- B. The salivary and pancreatic secretions
- C. The gastric and pancreatic secretions
- D. The gastric and duodenal secretions

Answer: B



[Watch Video Solution](#)

90. A lubricant, mucin in saliva is made up of

- A. Glycoprotein
- B. Polysaccharides
- C. Phospholipids
- D. Myosin

Answer: C



[Watch Video Solution](#)

91. The toxic substance are detoxicated in the human body by

- A. Lungs

B. Kidneys

C. Liver

D. Stomach

Answer: A



Watch Video Solution

92. The trypsin enzyme is secreted by

A. Stomach

B. Duodenum

C. Pancreas

D. Liver

Answer: B



Watch Video Solution

93. Bilirubin and biliverdin are found

- A. Blood
- B. Bile
- C. Pancreatic juice
- D. Saliva

Answer: A



[Watch Video Solution](#)

94. Match the names of glands column-I with the location given under column-II, choose the answer which gives combination of the alphabets of the two columns

{:(,,"Column-I",,"Column-II"),(A),"Cryptus of Lieberkuhn",(1),"Loop of duodenum"),(B),"Pancreas",(2),"Stomach"),(C),"Adrenal gland", (3),"Intestine"),(D),"Gastic gland",(4),"kidney"):

A. A=r, B=p, C=q, D=s

B. A=r, B=p, C=s, D=q

C. A=q, B=s, C=r, D=p

D. A=p, B=r, C=s, D=q

Answer: B

 [Watch Video Solution](#)

95. The bile secreted by the liver cells passes into the gall bladder through

A. Hepato-pancreatic duct

B. Cystic duct

C. Hepatic duct

D. Hepato-gall duct

Answer: A



[Watch Video Solution](#)

96. Which of the following is not a human salivary gland

- A. Parotid
- B. Submaxillary
- C. Sublingual
- D. Infra-orbital

Answer: D



[Watch Video Solution](#)

97. Which is correct about the bile of rabbit

- A. It is synthesized by gall bladder & also stored there
- B. It is an enzyme which emulsify the fats
- C. It contains bile salts & bile pigments

D. Billirubin present in it decomposed fats

Answer: C



View Text Solution

98. Which of the following diggestive juices have the minimum Ph

A. Bile

B. Saliva

C. Gastric juice

D. Pancreatic juice

Answer: C



Watch Video Solution

99. Putrefying bacteria are found in

A. Intestine

B. Colon

C. Stomach

D. Liver

Answer: B



[Watch Video Solution](#)

100. The glucose is converted into glycogen in liver and stored in :

A. Liver

B. Liver and muscles

C. Liver and spleen

D. Spleen and muscles

Answer: B



[Watch Video Solution](#)

101. Gastric juice contains.

- A. Pepsin, rennin, lipase
- B. Pepsin, amylase, rennin
- C. Pepsin, amylase, trypsin
- D. Lipase, rennin, trypsin

Answer: A



Watch Video Solution

102. Enzyme arginase is found in

- A. Mouth cavity
- B. Stomach
- C. Intestine

D. Liver

Answer: D



[Watch Video Solution](#)

103. A young infant may be feeding entirely on mother's milk which is white in colour but the stools which the infant passes out is quite yellowish. The yellow colour of stool is due to

- A. Intestinal juice
- B. Bile pigments passed through bile
- C. Undigested milk protein casein
- D. Pancreatic juice poured into duodenum

Answer: B



[Watch Video Solution](#)

104. Kupffer cells of liver are

- A. Loose connective tissue
- B. Phagocytic cell
- C. Mass cell
- D. Fat cell

Answer: B



Watch Video Solution

105. Bile secretion is proportional to the concentration of

- A. Protein
- B. Fat
- C. Carbohydrates
- D. None of these

Answer: B



Watch Video Solution

106. The special feature of bile juice is that it

- A. Has no enzyme
- B. Has amylase
- C. Contain lipase
- D. *Contains H_2O*

Answer: A



Watch Video Solution

107. Cells of the liver manufacture

- A. Diastese

B. Amylase

C. Lipase

D. Insulin

Answer: A



[View Text Solution](#)

108. Succus entericus is secreted by

A. Islets of Langerhans

B. Gastric gland

C. Uterine crypt and endometrium

D. Crypts of Lieberkuhn and Brunner's gland

Answer: D



[Watch Video Solution](#)

109. In which of the following proteins are absent

- A. Pancreatic juice
- B. Saliva
- C. Bile
- D. Intestinal juice

Answer: C



Watch Video Solution

110. Which word best describes the action of bile on fats

- A. Neutralises
- B. Diagests
- C. Emulsifies
- D. Absorbs

Answer: C



Watch Video Solution

111. Ph of the pancreatic juice is about

A. 6.4

B. 8.4

C. 12

D. 7

Answer: B



Watch Video Solution

112. One of the following is specific function of the liver. Mark it

A. Excretion

B. Glycogenolysis

C. Digestion

D. Histolysis

Answer: B



[Watch Video Solution](#)

113. Surgical removal of gall bladder in human beings would lead to

A. Impairment of the digestion of fat

B. Increased acidity in the intestine

C. Jaundice

D. None of these

Answer: A



[Watch Video Solution](#)

114. Which one of the following does not produce any digestive enzyme

- A. Intestinal mucosa
- B. Gastrin mucosa
- C. Pancreas
- D. Liver

Answer: D



[Watch Video Solution](#)

115. Kupffer cells are found in

- A. Mouth
- B. Liver
- C. Kidney
- D. Stomach

Answer: B



Watch Video Solution

116. Which of the following pairs of the kind of cells and their secretion of correctly matchd

- A. Oxyntic cells - A secretion with Ph between 2.0 and 3.0
- B. Alpha cells of islets - Secretion that decrease blood sugar level
- C. Kupffer cells - Digestive enzyme that hydrolyses nucleic acids
- D. Sebaceous glands - A secretion that evaporates for cooling

Answer: A



Watch Video Solution

117. Liver is called the reticular gland because

A. The shape is reticular

B. It contains reticular tissue

C. Lobules branches and anastomose with one another to form to network

D. Hepatic duct and cystic duct to form the bile duct

Answer: C



Watch Video Solution

118. Enterokinase and lactase are found in

A. Saliva

B. Bile

C. Pancreatic

D. Intestinal juice

Answer: D



[Watch Video Solution](#)

119. The largest gland in the human body is

- A. Liver
- B. Brain
- C. Pancreas
- D. Thyroid

Answer: A



[Watch Video Solution](#)

120. Cholesterol is synthesised in

- A. Pancreas
- B. Brunner's gland
- C. Spleen

D. Liver

Answer: D



Watch Video Solution

121. Match the types of cells listed under column I with the secretion given column II. Choose the answer which gives the correct combination of the alphabets of the two columns

{:(,,"Column-I",,"Column-II"),(,(A),"Beta cells",,(1),"Lysosyme"),(,(B),"Mast cells",,(2),"Histamine"),(,(C),"Paneth cells",,(3),"Insulin"),(,(D),"Acinar cells",,(4),"Pancreatic enzymes"):

A. A=r, B=s,C=p,D=q

B. A=s, B=q,C=p,D=r

C. A=r, B=q,C=p,D=s

D. A=q, B=r,C=p,D=s

Answer: C



[Watch Video Solution](#)

122. Caudate is the part of

- A. Left lobe of liver
- B. Right lobe of liver
- C. Spigelian lobe of liver
- D. All the above

Answer: B



[Watch Video Solution](#)

123. Amount of saliva secreted daily in humans is

- A. 250ml
- B. 500ml
- C. 100ml

D. 1000ml

Answer: D



Watch Video Solution

124. Lysozymes are found in

A. Saliva

B. Tears

C. Saliva and tears both

D. Mitichondria

Answer: C



Watch Video Solution

125. The amount of gastric juice secreted per day from man's stomach is about

- A. 500ml to 10000ml
- B. 2000ml to 3000ml
- C. 100ml to 500ml
- D. 10ml to 5ml

Answer: B



Watch Video Solution

126. Which cells of *CryptosofLieberkuhn* secrete antibacterial lysozyme

- A. Argentaffin cells
- B. Paneth cells
- C. Zymogen cells
- D. Kupffer cells

Answer: B



Watch Video Solution

127. Fructose is absorbed into the blood through mucosa cells of intestine by process called

- A. Simple diffusion
- B. Co-transport mechanism
- C. Active transport
- D. Facilitated transport

Answer: D



Watch Video Solution

128. Which one of the following pairs of food components in human reaches the stomach totally undigested

A. Protein and starch

B. Fat and starch

C. Fat and cellulose

D. Starch and cellulose

Answer: C



Watch Video Solution

129. In vertebrates, lacteals are found in

A. Ileum

B. Ischium

C. Oesophagus

D. Ear

Answer: A



Watch Video Solution

130. If pancreas is removed, the components which remain undigested by

A. Carbohydrates

B. Fats

C. Protein

D. All the above

Answer: D



Watch Video Solution

131. Chylomicrons are

A. Undigested proteins

B. Undigested carbohydrates

C. Fat droplets coated with glycerol and protein

D. Fat droplets coated with phospholipids

Answer: C



Watch Video Solution

132. Which enzymes are likely to act on the blaked potatoes eaten by a man, starting from the mouth and as it moves down the alimentary canal

A. Pancreatic amylase → to salivary amylase → lipases

B. Disaccharidas like maltase → lipases → nuleases

C. Salivary amylase → Pancreatic amalyase → disaccharidases

D. Salivary maltase → carboxylic peptidase → tyrpsinogen

Answer: C



Watch Video Solution

133. Trypsin is a digestive enzyme which occurs in mammals and digests

- A. Starch in buccal cavity in an alkaline medium
- B. Protein in stomach in an acidic medium
- C. Protein in duodenum in an acidic medium
- D. Protein in duodenum in an alkaline medium

Answer: D



Watch Video Solution

134. The major site of protein breakdown to form free amino acids, is the

- A. Kidney
- B. Spleen
- C. Liver
- D. Bone-marrow

Answer: C



Watch Video Solution

135. The first phase in the breakdown of glucose in animal cell is

- A. Glycolysis
- B. Electron transport system
- C. Fermentation
- D. Kerb's cycle

Answer: A



Watch Video Solution

136. Digestion of both starch and protein is done by

- A. Gastric juice

B. Gastric lipase

C. Pancreatic juice

D. Ptylin

Answer: C



Watch Video Solution

137. The end product of carbohydrate metabolism is

A. CO_2 and H_2O

B. NH_3 and CO_2

C. NH_3 and H_2O

D. CO_2

Answer: A



Watch Video Solution

138. What one of the following statements about glycogen is correct

- A. It is disaccharide stored in liver which can react with ammonia to form proteins
- B. It is synthesised in the liver and takes part in the formation of bile and lipase, besides being a source of energy
- C. It is a polysaccharide which is synthesised and stored in liver cells
- D. It is synthesised in blood and stored in liver and muscles to provide glucose in time of need

Answer: C



[Watch Video Solution](#)

139. Which one of the following statements is true regarding digestion and absorption of food in humans

- A. Oxyntic cells in our stomach secrete the proenzyme pepsinogen

- B. Fructose and amino acids are absorbed through intestinal mucosa with the help of carrier ions like Na^+
- C. Chylomicrons are small lipoprotein particles that are transported from intestine into blood capillaries
- D. About 60% of starch is hydrolysed by salivary amylase in our mouth

Answer: B



Watch Video Solution

140. Fats and lipids are absorbed in

- A. Lymph capillaries
- B. Blood capillaries
- C. Hepatic portal vein
- D. None of these

Answer: A



[Watch Video Solution](#)

141. One of the following movements in our body is not completely involuntary, identify it

- A. Deglutition
- B. Peristalsis
- C. Systole of the ventricles
- D. Dilation of pupil of the eye

Answer: A



[Watch Video Solution](#)

142. In the gastrointestinal tract the Meissner's plexus and the Auerbach's plexus occur respectively in the

- A. Lamina propria and muscularis mucosa

B. Submucosa and muscularis externa

C. Submucosa and mucosa

D. Mucosa and muscularis externa

Answer: B



Watch Video Solution

143. Emulsified fat is digested by

or

Bile salts as activator of which enzyme

A. Lipase

B. Lipase and hydrolase

C. Bile salts

D. Bile pigments

Answer: A



[Watch Video Solution](#)

144. Lactals are found in

- A. Liver
- B. Lungs
- C. Kidney
- D. Villus of intestine

Answer: D



[Watch Video Solution](#)

145. Which of the following is the correct matchin of the site of action on the given substrate, the enzyme acting state upon it and the end product

- A. small intestine: →Proteins pepsin Amino acids
- B. Stomach: →Fats Lipase micelles

C. Duodenum → Triglycerides Trypsin monoglycerides

D. Small intestine: → Starch α Amylase Disaccharide

Answer: D



Watch Video Solution

146. If for some reason the parietal cells of the gut epithelium become partially non-functional, what is likely to happen

- A. The pancreatic enzymes and specially the trypsin and liase will not work efficiently
- B. The Ph of stomach will fall abruptly
- C. Steapsin will be more effective
- D. Protein will not be adequately hydrolysed by pepsin into proteoses and peptones

Answer: D

 [Watch Video Solution](#)

147. Which of the following is secreted by pancreas

- A. Dipetidases
- B. Amylase
- C. α – Dextrins
- D. Pepsin

Answer: B

 [Watch Video Solution](#)

148. Most digestion and absorption of food takes place in

- A. Stomach
- B. Small intestine
- C. Large intestine

D. Caecum

Answer: B



Watch Video Solution

149. Essentially the word 'digestion' means

- A. Burning of food
- B. Oxidation of food Hydrolysis of food
- C. Breakdown of food
- D.

Answer: D



Watch Video Solution

150. Emulsification of fats is brought about by

A. Bile pigments

B. Bile salts

C. Pancreatic juice

D. HCl

Answer: B



[Watch Video Solution](#)

151. Sacculus rotundus is present in

A. Duodenum of rabbit

B. Ileum of frog

C. Ileum of rabbit

D. Colon of rabbit

Answer: C



[Watch Video Solution](#)

152. Which one the following will not take place when gulcose is taken as food

A. Ingestion

B. Digestion

C. Absorption

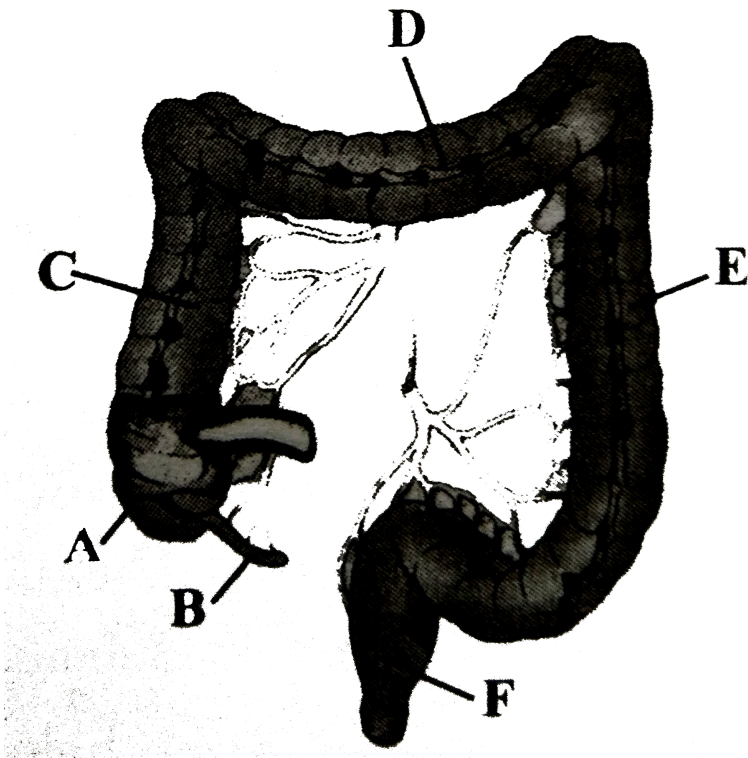
D. Assimilation

Answer: B



Watch Video Solution

153. The diagram of large intestine of man is given here. Identify the parts labelled as A,B,C,D,E and F



[▶ Watch Video Solution](#)

154. Some proteolytic enzymes are

- A. Trypsin, Erepin , pepsin
- B. Amylopsin, steapsin, ptyallin
- C. Urease, zymase, dehydrogenase

D.

Answer: A



Watch Video Solution

155. Choose the wrong statement

- A. Lipase and nucleases are not present in pancreatic juice
- B. Goblet cells secrete mucus
- C. Brunner's glands are sub-mucosal glands
- D. Carboxypeptidase catalyses conversion of proteins, peptones to dipeptides

Answer: A



Watch Video Solution

156. Rennin acts on milk proteins and converts

- A. Casinogen into casien
- B. Casein into paracasein
- C. Caseinogen into paracasein
- D. Paracasein into caseinogen

Answer: B



Watch Video Solution

157. Lacteals are associated with

- A. Secretion of lactic acid
- B. Absorption of long chain fatty acids
- C. Absorption of short chain fatty acids
- D. Production of lymph

Answer: B



[Watch Video Solution](#)

158. In gluconeogenesis

- A. Glucose is polymerized into glycogen
- B. Glycogen is broken into glucose
- C. Carbohydrates are synthesized from amino acids/lipids
- D. Glucose is broken into pyruvic acid

Answer: C



[Watch Video Solution](#)

159. Carrier ions like Na^+ facilitate the absorption of substance like

- A. Fructose and some amino acids

B. Amino acids and glucose

C. Glucose and fatty acids

D. Fatty acids and glycerol

Answer: A



Watch Video Solution

160. The pH of the digestive juices within the human small intestine is between 7.5 and 8.5. This environment is slightly

A. Basic

B. Acidic

C. Neutral

D. None of these

Answer: A



Watch Video Solution

161. Trypsin differs from pepsin in that

- A. It digests protein in alkaline medium while pepsin does so in acidic medium
- B. Both (a) and (b)
- C. None of these
- D.

Answer: A



Watch Video Solution

162. Digestion of starch takes place in

- A. Stomach and duodenum
- B. Buccal cavity and duodenum
- C. Buccal cavity and oesophagus

D. Duodeum only

Answer: B



Watch Video Solution

163. Ptyalin is inactive by a component of gastric juice

A. Pepsin

B. Mucus

C. Rennin

D. HC

Answer: D



Watch Video Solution

164. Function of HCl in stomach is to

A. Kill micro - organisms of food

B. Facilitate absorption of food

C. Dissolve enzymes

D. Activate pepsinogen to pepsin

Answer: D



Watch Video Solution

165. Lipids, which can be found in oil based salad dressings and ice cream, during digestion are splitted into

or

The main function of Lacteals in the human small intestine is the absorption of

A. Fatty acids and glycerol

B. Glycerol and amino acids

C. Glucose and fatty acids

D. Glucose and amion acids

Answer: A



Watch Video Solution

166. In horse, rabbits, hares, the cellulose gets digested in the

A. Caecum

B. Stomach

C. Appendix

D. Rumen

Answer: A



View Text Solution

167. Part of the stomach which opens into the duodenum

A. Cardic

B. Pyloric

C. Fundus

D. Body

Answer: B



[Watch Video Solution](#)

168. Energy relased by carabohydrate, facts, protein is

A. 4.1, 9.45, 5.65

B. 4.1, 5.65, 9.40

C. 5.4, 6.5, 8.9

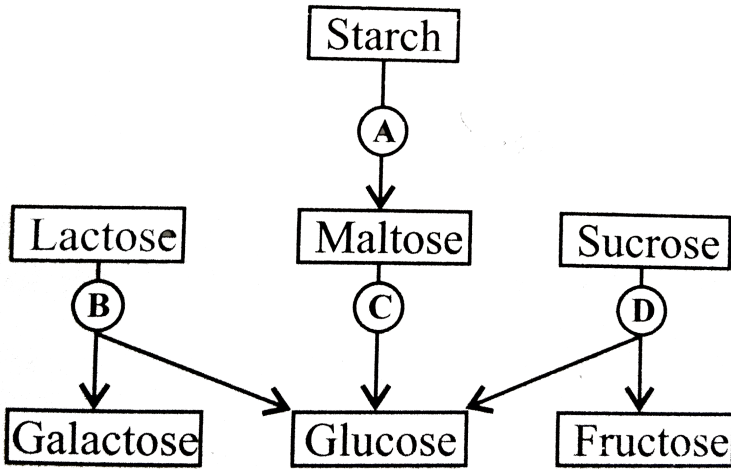
D. 5.0, 7.8, 10.5

Answer: A



[View Text Solution](#)

169. The given flowchart shows the fate of carbohydrates during digestion in the human alimentary canal. Identify the enzymes acting at stages indicated as A,B,C and D and select the correct option.



- A. A = amylase, B= maltase, C= lactase, D= invertase
- B. A = amylase, B= maltase , C= invertase , D= lactase.
- C. A= amylase, B= invertase, C= maltase , D= lactase
- D. A = amylase, B= lactase, C= maltase, D= invertase

Answer: D



Watch Video Solution

170. The food that enters intestine from stomach is called

- A. Chyle
- B. Chyme
- C. Fundus
- D. None of these

Answer: B



Watch Video Solution

171. End products of protein hydrolysis are

- A. Mixture of amino acids
- B. Sugars
- C. Peptides

D. 25 amino ac, is

Answer: A



Watch Video Solution

172. The amount of bile released in proportion to the amount of

- A. Fat in meal
- B. Protein in meal
- C. Carbohydrates in meal
- D. All of the above

Answer: A



Watch Video Solution

173. Which one the following is the matching pair of digestive enzyme and substrate

- A. Rennin-Protein
- B. Amylase- Lactose
- C. Trypsin- Starch
- D. Invertase- Maltose

Answer: A



[View Text Solution](#)

174. Digestion of which component of the food is likely to be most adversely affected if the pH of stomach is made neutral

- A. Sucrose
- B. Starch
- C. Protein

D. Fat

Answer: C



Watch Video Solution

175. IN man cellulose is degested in

A. The caecum

B. The colon

C. The appendix

D. Not digested at all

Answer: D



Watch Video Solution

176. Milk protein is acted upon by a gastric enzyme

or

Which one the following enzyme carries on the initial step in the digestion of milk in humans

- A. Casein
- B. Rennin
- C. Pepsin
- D. Casinogen

Answer: B



[Watch Video Solution](#)

177. Bile salt

- A. Acts as emulsifying agent
- B. Helps in absorption of fatty acids, cholesterol etc

C. Stimulate the bile production in liver

D. All of the above

Answer: D



[Watch Video Solution](#)

178. Maltase converts

A. Maltose to glucose at pH greater than 7

B. Maltase to glucose at pH less than 7

C. Maltose to alcohol

D. Strach to maltose at higher pH than 7

Answer: A



[Watch Video Solution](#)

179. Duodenum has characteristic Brunner's glands which secrete two hormones called

- A. Prolactin, parathormone
- B. Estradiol, progesterone
- C. Kinase, estrogen
- D. Secertin, cholecystokinin

Answer: D



[View Text Solution](#)

180. The function of erepsin in the process of digestion is to convert

- A. Fats into amino acids
- B. Proteins in amino acids
- C. Polysaccharide into disaccharides
- D. Disaccharide into monosaccharides

Answer: B



Watch Video Solution

181. Just as hydrochloric acid is to pepsinogen, so is

- A. Enterokinase to trypsinogen
- B. Haemoglobin to oxygen
- C. Bile juice to fat
- D. Glucose to glycogen

Answer: A



Watch Video Solution

182. In ileum which of the following is absorbed

- A. Vitamin K

B. Bile salts

C. Glucose

D. Fat

Answer: C



[View Text Solution](#)

183. Bile salts are poured into the alimentary canal where they are necessary for the absorption of

A. Na^+ and Ca^{++}

B. Fat soluble vitamins

C. Amino acids and monosaccharides

D. All the nutrients are emulsified in chyme

Answer: B



[Watch Video Solution](#)

184. fatty substance are emulsified by

- A. Lipase enzyme
- B. Bilirubin and biliverdin
- C. HCl
- D. Sodium salts of glycocholic and taurocholic acids

Answer: D



[Watch Video Solution](#)

185. Which of the following option best represents the enzyme composition of pancreatic juice

- A. Amylase, peptidase , trypsinogen,rennin
- B. Amylase, pepsin, trypsinogen ,maltase
- C. Peptidase, amylase, pepsin, rennin

D. Lipase, amylase , trypsinogen, procarboxypeptidase

Answer: D

 [Watch Video Solution](#)

186. What will happen if the secretion of parietal cells of gastric glands is blocked with an inhibitor?

- A. In the absence of HCl secretion , inactive pepsinogen is not converted into the active enzyme pepsin
- B. Enterokinase will be not be released from the duodenal mucosa and so trypsinogen is not converted to trypsin
- C. Gastric juice will be deficient in chymosin
- D. Gastric juice will be deficient in pepsinogen

Answer: A

 [Watch Video Solution](#)

187. Pancreatic secretion and gall bladder contraction are stimulated by

- A. Gastrin
- B. Ebterocrinin
- C. Eterogastrone
- D. Cholecystokinin pancreozymine

Answer: d



View Text Solution

188. Digestion is brought about by

- A. Hormones
- B. Neurotransmitters
- C. Growth factors
- D. Enzymes

Answer: d



View Text Solution

189. Salivary amylase of saliva begins begins digestion of

- A. Proteins
- B. Fats
- C. Carbohydrates
- D. All of these

Answer: c



Watch Video Solution

190. In humans one of the constituents of the pancreatic juice which is poured into the duodenum is

A. Trypsin

B. Enterokinase

C. Trypsinogen

D. Chymotrypsin

Answer: c



Watch Video Solution

191. Match the columns and choose the correct option

I

II

- | | | |
|---------------------------|---|------------------------|
| <i>a</i> Salivary amylase | 1 | Protiens |
| <i>b</i> Bile salts | 2 | Milk proteins |
| <i>c</i> Rennin | 3 | Starch |
| <i>d</i> Pepsin | 4 | Lipids |
| <i>e</i> Strepsin | 5 | Emulsification of fats |

A. (A)-(5),(B)-(4),(C)-(1),(D)-(2), (E)-(3)

B. (A)-(2),(B)-(3),(C)-(4),(D)-(5),(E)-(1)

C. (A)-(2),(B)-(4),(C)-(3),(D)-(1), (E)-(5)

D. (A)-(3), (B)-(5), (C)-(1), (D)-(2), (E)-(4)

Answer: D



Watch Video Solution

192. Which of the following statement is correct

A. Though secretin is an enzyme, it is not involved in digestion

B. Secretin is an enzyme and so it helps digestion

C. Secretin is a hormone but it plays a role in digestion

D. Secretin is a hormone and hence it does not play any role in digestion

Answer: c



View Text Solution

193. Enzyme which hydrolyses starch to maltose is

- A. Maltase
- B. Invertase
- C. Lipase
- D. Amylase

Answer: d



Watch Video Solution

194. Enzymes which acts similarly are called as

- A. Isoenzymes
- B. Cofactor
- C. Coenzymes
- D. All of above

Answer: a



[View Text Solution](#)

195. Zymogen cells of gastric glands produce

- A. Hydrochloric acid
- B. Mucus
- C. Pepsin
- D. Trypsin

Answer: c



[Watch Video Solution](#)

196. If this enzyme is absent in our small intestine, digestion of proteins in our body would be severely affected. identify the enzyme.

A. Pancreatic amylase

B. Maltase

C. Lipase

D. Enterokinase

Answer: d



[Watch Video Solution](#)

197. Prorennin is produced by

A. Zymogene cells

B. Islet of langerhans

C. Sertoil cells

D. Hepatocytes

Answer: a



[Watch Video Solution](#)

198. Enzyme Rennin is secreted by

- A. Cells of stomach
- B. Cells of intestine
- C. The cortical cells of kidney
- D. The cells of juxtaglomerular apparatus of kidney

Answer: a



View Text Solution

199. The digestive enzyme that is not found in human pancreatic juice is

- A. Nucleotidase
- B. Nuclease
- C. Trypsin

D. Lipase

Answer: a



[View Text Solution](#)

200. Deoxyribonuclease, ribonuclease and Carboxypeptidase are secreted by

A. Liver

B. Stomach

C. Pancreas

D. Stomach

Answer: c



[View Text Solution](#)

201. Bile synthesis occurs in

- A. Liver
- B. Duodenum
- C. Pancreas
- D. Stomach

Answer: a



View Text Solution

202. Which one of the following four secretions is correctly matched with its source, target and nature of action?

	Secretion	Source	Target	Action
(A)	Gastrin	Stomach lining	Oxyntic cells	Production of HCl
(B)	Inhibin	Sertoli cells	Hypothalamus	Inhibition of secretion of gonadotropin releasing hormone
(C)	Enterokinase	Duodenum	Gall bladder	Release of bile juice
(D)	Atrial natriuretic factor (ANF)	Sinoatrial node (SAN) M-Cells of atria	Juxtaglomerular apparatus (JGA)	Inhibition of release of renin

 [Watch Video Solution](#)

203. Which one of the following enzymes initiates protein digestion

- A. Aminoperptidase
- B. Carboxypeptidase
- C. Trypsin
- D. Pepsin

Answer: d

 [Watch Video Solution](#)

204. Pepsin is produced by

- A. Salivary glands
- B. Stomach
- C. Duodenum
- D. Small intestine

Answer: b



View Text Solution

205. Which one of the following is a matching pair of substrate and its particular digestive enzyme?

- A. Lactose-Renin
- B. Starch-Maltase

C. Fat-Steapsin

D. Casein-Trypsin

Answer: c



Watch Video Solution

206. Glucagon secreted by the alpha-cells of the islets of Langerhans does this function

- A. Glucagon converts glucose into glycogen and increses the concentration of blood sugar
- B. Glucagon converts glycogen into glucose and increases the concentration of blood sugar
- C. Glucagon converts glucose into glycogen
- D. None of these

Answer: b

207. Match the following and choose the correct combination from the

Column I		Column II	
A.	Ptyalin	1.	Lipids
B.	Pepsin	2.	Starch
C.	Steapsin	3.	DNA
D.	Nuclease	4.	Proteins

options given

A. A-1,B-3,C-2,D-4

B. A-1,B-4,C-3,D-2

C. A-4,B-3,C-1,D-2

D. A-2,B-3,C-1,D-4

Answer: c

208. Cells of the pancreas is not digested by their own enzymes because

- A. Enzymes are secreted in inactive form
- B. Cells are not lined by mucous membrane
- C. Enzymes are released only when needed
- D. None of above

Answer: a

 [View Text Solution](#)

209. When fat is in the stomach the secretion of gastrin is inhibited. This inhibition is due to

- A. Presence of fat
- B. Non-stimulation of vagus
- C. Slow digestion of fat
- D. Release of enterogastron

Answer: c

 [View Text Solution](#)

210. Hormone that stimulates stomach to secrete gastric juice is

- A. Secretin
- B. Gastron
- C. Cholecystolinin
- D. Gastrin

Answer: d

 [Watch Video Solution](#)

211. Cholecystokinin is secretion of

- A. Stomach which stimulates pancreas tpo release the pancreatic juice
- B. Liver sybthesised from cholesterol and controls secondary sexual characters

- C. Duodenumand makes the gall bladder to contract and release bile
- D. Goblet cells of ileum and stimulates the secretion of succus entericus

Answer: c



Watch Video Solution

212. In rabbit proteins are digested by

- A. Pepsin and trypsin
- B. Trypsin and steapsin
- C. Steapsin and pepsin
- D. All the above

Answer: a



View Text Solution

213. Which of the following is not a proteolytic enzyme

- A. Pepsin and trypsin
- B. Trypsin and steapsin
- C. Erepsin
- D. Renin

Answer: d



[View Text Solution](#)

214. Identify the correct set which shows the same of enzymes from where it is secreted and substrate upon which it acts

- A. Pepsin-stomach wall-casein
- B. Ptyalin-intestine-maltose
- C. Chymotrypsin-salivary gland-lactose
- D. Ptyalin-pancreas-lipid CoA

Answer: a



[View Text Solution](#)

215. Eenzyme trypsin converts

- A. Fats into fatty acids
- B. Starch and glycogen into maltose
- C. Proteins into peptons
- D. Sucrose into glucose and fructose

Answer: c



[Watch Video Solution](#)

216. Islets of Langerhans produce

- A. Insulin

B. Rennin

C. Ptyalin

D. HCl

Answer: a



[View Text Solution](#)

217. Which of the following is a gastro-intestinal enzyme

A. Cholinestrase

B. Enterokinase

C. Secretin

D. Prolactin

Answer: b



[View Text Solution](#)

218. Secretin

- A. Stimulates enzyme secretion by pancreas, inhibits acid secretion in stomach, stimulates gall bladder
- B. Stimulates bicarbonate secretion by pancreas, inhibits acid secretion in stomach, stimulates bicarbonate secretion by liver
- C. Stimulates acid secretion in stomach. Potentiates action of CCK, inhibits intestinal movement
- D. Stimulates gall bladder, inhibits acid secretion in stomach, stimulates bicarbonates secretion by pancreas

Answer: d



[View Text Solution](#)

219. Gastro-intestinal hoemone that stimulates insulin secretion is

A. Gastrin

B. *CCK*

C. Secretin

D. GIP

Answer: d



Watch Video Solution

220. Gastic enzymes are

A. Pepsinogen

B. Prorennin

C. Gastric lipase

D. All of these

Answer: d



View Text Solution

221. Enzymes, vitamins and hormones can be classified into a single category of biological chemicals, because all of them

- A. Are proteins
- B. Enhance the oxidative metabolism
- C. Aid the regulating mechanism
- D. Are synthesised within the body of an organism

Answer: c



View Text Solution

222. The hormone 'secretin' stimulates secretion of

- A. Pancreatic juice
- B. Bile juice
- C. Salivary juice

D. Gastric juice

Answer: a



[View Text Solution](#)

223. What is common among amylase, rennin and trypsin?

- A. These all are proteins
- B. These all are proteolytic enzymes
- C. These are produced in stomach
- D. These act a pH lower than 7

Answer: a



[Watch Video Solution](#)

224. Cholecystokinin and duocrinin are secreted by

A. Intestine

B. Pancreas

C. Adrenal cortex

D. Thyroid gland

Answer: a



View Text Solution

225. Which part of body secretes the hormone secretin?

A. lieum

B. Stomach

C. Duodenum

D. Oesophagus

Answer: c



Watch Video Solution

226. Substrate for lipase is

- A. Protein
- B. Carbohydrate
- C. Lipid
- D. Nucleic acid

Answer: c



Watch Video Solution

227. Which of the following hormones induce secretion of succus entericus

- A. Insulin
- B. Secretin and cholecystokinin
- C. Glucagon

D. Secretin

Answer: b



View Text Solution

228. Cholecystokinin is

A. Enzyme

B. Bile-pigment

C. Gastro-intestinal hormone

D. Lipid

Answer: c



Watch Video Solution

229. When breast feeding is replaced by less nutritive food low in proteins and calories, the infants below the age of one year are likely to suffer from

- A. Marasmus
- B. Rickets
- C. Kwashiorkor
- D. Pellagra

Answer: a



Watch Video Solution

230. Statements

- A. The element which is very important for the production of thyroxine is iodine
- B. Vitamin B_6 is otherwise known as niacin or nicotinic acid

C. Fructose is a monosaccharide and is a hexose sugar

D. Globulin is an example for a conjugated protein of the above statements

Answer: b



[Watch Video Solution](#)

231. The number of essential amino acids in adult human is

A. Nine

B. Eight

C. Four

D. Seven

Answer: b



[Watch Video Solution](#)

232. Which one of the following statements is not correct

- A. Retinal is a derivative of vitamin C
- B. Rhodopsin is the purplish red protein present in rods only
- C. Retinal is the light absorbing portion of visual photopigments
- D. In retina the rods have the photopigment rhodopsin while cones have three different photopigments

Answer: a



Watch Video Solution

233. Inadequate protein intake leads to kwashiorkor. The subsequent edema is most closely related to inadequate synthesis of which protein

- A. Gamma globulin
- B. Glucagon
- C. Insulin

D. Albumin

Answer: d



Watch Video Solution

234. Hypochromic microcytic anaemia and leucopenia are caused by the deficiency of Respectively

- A. Pyridoxine and riboflavin
- B. Pyridoxine and folacin
- C. Biotin and folacin
- D. Biotin and cyanocobalamin

Answer: b



Watch Video Solution

235. Liver necrosis and muscular dystrophy are caused by the lack of this trace element

- A. Arsenic
- B. Molybdenum
- C. Zinc
- D. Selenium

Answer: d



Watch Video Solution

236. This trace element is needed for insulin to exert its maximal effect in glucose uptake

- A. Vanadium
- B. Chromium
- C. Molybdenum

D. Selenium

Answer: b



Watch Video Solution

237. Which of the following is a reducing sugar

A. Sucrose

B. Galactose

C. Gluconic acid

D. β -methyl galactoside

Answer: b



Watch Video Solution

238. What is the common between amino acids, fatty acids and glycerol

- A. These are all rich source of calories
- B. These are the builders of protoplasm
- C. These are the end products of digestion of two categories of food constituents
- D. These can be stored in the form of fat

Answer: c



Watch Video Solution

239. The smallest structural units of proteins are called

- A. Amino acids
- B. Peptides
- C. Proteoses
- D. Peptones

Answer: a



[Watch Video Solution](#)

240. In human per cent of body weight of carbohydrates, lipids and proteins respectively is

A. 1,15,17

B. 15,17,7,

C. 7,17,15

D. 17,15,7

Answer: a



[Watch Video Solution](#)

241. During prolonged fasting

A. The first to be used up are carbohydrates,next fat is withdrawn and proteins are metabolised at the last

- B. The first to be used up are the fats, next carbohydrates are withdrawn from stored glycogen in the liver and muscles and proteins are withdrawn at the last
- C. First lipids are used up, then proteins and finally carbohydrate
- D. None of these

Answer: a



Watch Video Solution

242. To get sufficient carbohydrates one should take

- A. Meat
- B. Rice
- C. Carrots
- D. Ground nuts

Answer: b



[Watch Video Solution](#)

243. Glucose and amino acids are absorbed in the intestine by

- A. Active transport
- B. Passive transport
- C. Selective absorption
- D. Osmosis

Answer: a



[Watch Video Solution](#)

244. Milk protein is

- A. Rennin
- B. Casein
- C. Galactose

D. Glycine

Answer: b



Watch Video Solution

245. Unsaturated fatty acids have

A. Palmitic acid

B. Stearic acid

C. Oleic acid

D. One or more double bonds

Answer: d



Watch Video Solution

246. Which one of the following set is a polysaccharide group

- A. Glucose,fructose, lactose
- B. Starch ,glycogen, cellulose
- C. Sucrose,maltose,glucose
- D. Galactose,starch,sucrose

Answer: b

 [Watch Video Solution](#)

247. Lactose is composed of

- A. Glucose + fructose
- B. Glucose + glucose
- C. Glucose + galactose
- D. Fructose + galactose

Answer: c

 [Watch Video Solution](#)

248. The anhydro bond of proteins are called

- A. Glycosidic
- B. Peptide
- C. Ester
- D. Diester

Answer: b



Watch Video Solution

249. Role of carbohydrates is to function as

- A. Catalyst
- B. Source of energy
- C. Enzyme

D. Buiding material

Answer: b



[Watch Video Solution](#)

250. Digestion of protein takes place in

- A. Duodenum and stomach
- B. Stomach and oesophagus
- C. Small and large intestine
- D. Intestine and rectum

Answer: a



[Watch Video Solution](#)

251. Amino acids not synthesized in the body are called

A. Non-essential

B. Active

C. Essential

D. Inactive

Answer: c



[Watch Video Solution](#)

252. Essential : non-essential amino acid is

A. Lysine : leucine

B. Methionine : threonine

C. Valine : tyrosine

D. Alanine : cystine

Answer: c



[Watch Video Solution](#)

253. Most abundant mineral of animal body is

- A. Iron
- B. Sodium
- C. Potassium
- D. Calcium

Answer: d



Watch Video Solution

254. Which element is the cause of itai disease

- A. Hg
- B. Pb
- C. Cd

D. As

Answer: c



Watch Video Solution

255. Which of the following is not a vitamin deficiency disease

A. Addison's disease

B. Goitre

C. Keratomalacia

D. Xerophthalmia

Answer: b



Watch Video Solution

256. Choose the correct non-protein amino acid

A. Hydroxyproline

B. Hydroxylsine

C. Cystine

D. γ amino butyric acid

Answer: d



Watch Video Solution

257. Thiamine (B_1) deficiency results in

A. Wernickes' syndromes

B. Korsakoffs' syndromes

C. Osteonecrosis

D. Tunnel vision

Answer: a



Watch Video Solution

258. Vitamin D is synthesised by one of the following with the help of sunlight

- A. Skin
- B. Gall bladder
- C. Liver
- D. Pancreas

Answer: a



Watch Video Solution

259. Water soluble vitamins are

- A. Vitamin A,B and C
- B. Vitamin B and C
- C. Vitamins C and D

D. None of these

Answer: b



Watch Video Solution

260. Which of the following elements is a constituent of biotin

A. Magnesium

B. Calcium

C. Phosphorus

D. Sulphur

Answer: d



Watch Video Solution

261. Which of the following are required in minimum amount by human

A. Iron, iodine, carbon, manganese, copper, O_2

B. Iron, iodine, manganese, copper, zinc, fluorine

C. Iron, iodine, manganese, zinc, hydrogen

D. Nitrogen, oxygen, zinc, fluorine

Answer: b

 [Watch Video Solution](#)

262. Which is not used up in human body

A. Calcium

B. Phosphorus

C. Zinc

D. Barium

Answer: d

 [Watch Video Solution](#)

263. Simple storage protein that coagulates upon heating but remains soluble in dilute salt solution is correctly exemplified by

- A. Globulin
- B. Albumin
- C. Histone
- D. Collagen

Answer: b



Watch Video Solution

264. Fat soluble vitamins are

- A. Vitamin A,B and C
- B. Vitamin A ,B and D
- C. Vitamins A,D,E and K

D. Vitamin C and D

Answer: c



Watch Video Solution

265. Vitamin C is

A. Ascorbic acid

B. Nicotinic acid

C. Lipoic acid

D. Aspartic acid

Answer: a



Watch Video Solution

266. A pregnant female delivers a baby who suffers from stunted growth , mental retardation, low intelligence quotient and abnormal skin. This is the result of

- A. Over secretion of pars distalis
- B. Deficiency of iodine in diet
- C. Low secretion of growth hormone
- D. Cancer of the thyroid gland

Answer: b



Watch Video Solution

267. Main difference between brown fat and white fat is that the cells of brown fat

- A. Are multicoloured
- B. Have more mitochondria

C. Are polygonal in shape

D. All the above

Answer: b



Watch Video Solution

268. Collagen is a

A. Phosphoprotein

B. Globulin

C. Derived protein

D. Scleroprotein

Answer: d



Watch Video Solution

269. Higher animals cannot synthesize few fatty acids which are very essential for their growth and development. These fatty acids are typically

- A. Saturated
- B. Cycle
- C. Unsaturated
- D. Branched

Answer: c



Watch Video Solution

270. Which vitamin gets destroyed by heating

- A. Vitamin A
- B. Vitamin E
- C. Vitamin C
- D. Vitamin K

Answer: c



Watch Video Solution

271. Continued consumption of a diet rich in butter, red meat and eggs for a long period may lead to

- A. Vitamin A toxicity
- B. Kidney stones
- C. Hypercholesterolemia
- D. Urine laden with ketone bodies

Answer: c



Watch Video Solution

272. Term "vitamin" was given by

A. James Lind

B. Sterling

C. Funk

D. J.C. Drummond

Answer: c



Watch Video Solution

273. In vertebrate 's body mainly the food is stored in the form of

A. Fat

B. Fat and glycogen

C. Glycogen

D. Proteins

Answer: b



Watch Video Solution

274. Which of the following vitamins is water soluble as well as an antioxidant

A. Vitamin B_1

B. Vitamin A

C. Vitamin D

D. Vitamin C

Answer: d



[Watch Video Solution](#)

275. Zinc is associated with

A. Glycosylation

B. Immunization

C. Sulfation

D. Transcription

Answer: b



[Watch Video Solution](#)

276. Vitamin K is required for

- A. Converting prothrombin to thrombin
- B. Synthesis of prothrombin
- C. Calcium combination with prothrombin
- D. All of the above

Answer: b



[Watch Video Solution](#)

277. Iron is present in which one of the following

A. Glycophorin

B. Nuclein

C. Lectin

D. Catalase

Answer: d



Watch Video Solution

278. A balanced diet does not include

A. Carbohydrates and fats

B. Nucleic acids and enzymes

C. Proteins and vitamin

D. Minerals and salts

Answer: b



Watch Video Solution

279. Vitamin D is synthesized in skin, by the action of sunlight on

- A. Cholesterol
- B. 7-hydrox cholesterol
- C. Cephalo-cholesterol
- D. Ortho-phenoxy cholesterol

Answer: b



Watch Video Solution

280. Which one is an amino acid

- A. Pepsin
- B. Proline
- C. Cysteine

D. Renin

Answer: b



Watch Video Solution

281. Cyanocobalamine is essential for the formation of

A. RBC

B. WBC

C. Lymph

D. Platelets

Answer: a



Watch Video Solution

282. Salivary amylase is also known as

A. Ptyalin

B. Gastrin

C. Glyoxylase

D. Pepsin

Answer: a



Watch Video Solution

283. Beri-beri was discovered by

A. Funk

B. G.E. Foxan

C. Eijkman

D. Admiral Takaki

Answer: c



Watch Video Solution

284. In a normal adult, ascending order of concentration of following molecules is

A. $K > Na > Fe > Cu$

B. $Na > K > Cu > Fe$

C. $Fe > Na > K > Cu$

D. $Na > Fe > K > Cu$

Answer: a



Watch Video Solution

285. Megaloblastic anaemia of pregnancy is caused by the deficiency of

A. Vitamin B_{12}

B. Vitamin B_{12} and folic acid

C. Folic acid

D. Vitamin D

Answer: b



Watch Video Solution

286. A non-essential amino acid is

A. Lysine

B. Methionine

C. Alanine

D. Isoleucine

Answer: c



Watch Video Solution

287. Which of the following is not an unsaturated fatty acid (essential)

- A. Oleic acid
- B. Linoleic acid
- C. Linolenic acid
- D. Stearic acid

Answer: d

 [Watch Video Solution](#)

288. Flurine helps in maintaining the

- A. Dentine to deposit normally in teeth
- B. Enamel deposition and prevents the dental carries
- C. Erythropoiesis
- D. Absorption of certain substances by the cell

Answer: b

 [Watch Video Solution](#)

289. Which one of the following is a fat-soluble vitamin and its related deficiency disease

- A. Ascorbic acid - Scurvy
- B. Retinol - Xerophthalmia
- C. Cobalamine - Beri-beri
- D. Calciferol - Pellagra

Answer: b



Watch Video Solution

290. Cod and shark liver oil is a source of

- A. Energetic nutrients
- B. Constructive nutrients
- C. Energetic and constructive nutrients

D. Protective nutrients

Answer: d



[Watch Video Solution](#)

291. Certain vitamin B acts as

A. Enzymes

B. Coenzymes

C. Digestive enzymes

D. Hormones

Answer: b



[Watch Video Solution](#)

292. Which one of the following vitamins is manufactured in human liver

A. Vitamin A

B. Vitamin D

C. Vitamin C

D. Vitamin K

Answer: a



Watch Video Solution

293. Deficiency of it, causes loss of appetite, mental confusion, fatigue and muscle depreciation

A. Vitamin-K

B. Vitamin -C

C. Thiamine

D. Riboflavin

Answer: c

 [Watch Video Solution](#)

294. The following are needed for blood -clotting in mammals

- A. C^{++} and Vitamin E
- B. Ca^{++} and Vitamin K
- C. Ca^{++} and Vitamin A
- D. K^+ and Vitamin K

Answer: b

 [Watch Video Solution](#)

295. Which of the following is mismatched

- A. VitaminK-Beri-beri
- B. Vitamin C - Scurvy
- C. VitaminA-Xerophthalmia

D. Vitamin D- Rickets

Answer: a



Watch Video Solution

296. In beri-beri

- A. The coagulation time increases
- B. Dermatitis in organs exposed to sun rays
- C. The depigmentation of skin and hair starts
- D. The affect over peripheral nervous system, gastrointestinal tract and cardiovascular is pronounced

Answer: d



Watch Video Solution

297. Examination of blood of a person suspected of having anaemia, shows large, immature, nucleated erythrocytes without haemoglobin. Supplementing his diet with which of the following is likely to alleviate his symptoms

- A. Riboflavin
- B. Iron compounds
- C. Thiamine
- D. Folic acid and cobalamine

Answer: d



Watch Video Solution

298. In mammals vitamin synthesised by the intestinal bacteria is

- A. Pantothenic acid
- B. B_{12} (Cyanocobalamine)

C. Biotin and folacin

D. Choline

Answer: b



Watch Video Solution

299. Which of the following helps in synthesis of DNA cell division

A. Nicotinimide

B. Biotin

C. Folic acid

D. Pantothenic acid

Answer: c



Watch Video Solution

300. Which one is the most abundant protein in the animal world

- A. Trypsin
- B. Haemoglobin
- C. Collagen
- D. Insulin

Answer: c



Watch Video Solution

301. Defective red blood corpuscles can be seen when there is a deficiency of

- A. Retinol
- B. Vitamin K
- C. Vitamin B_2 (Riboflavin)
- D. Vitamin B_6 (Pyridoxine)

Answer: d



Watch Video Solution

302. General metabolism of the body will be affected due to the deficiency of

- A. Sodium
- B. Calcium
- C. Iodine
- D. Cobalt

Answer: a



Watch Video Solution

303. Infertility is believed to be due to the lack of vitamin

A. A

B. B

C. C

D. E

Answer: d



Watch Video Solution

304. Animals consuming only plant materials are referred as

A. Herbivores

B. Carnivores

C. Omnivores

D. Insectivores

Answer: a



Watch Video Solution

305. A person suffers from beri-beri, rickets and scurvy if he is not taking adequate amounts of

- A. Vitamin B_{12} A and C
- B. Vitamin B_1 , D and C
- C. Vitamin A, B and E
- D. Vitamin B_6 , and K

Answer: b



Watch Video Solution

306. Riboflavin (B_2 or G) is concerned with

- A. Maintenance of epithelial cells of skin
- B. Iron porphyrin proteins
- C. Metal containing pigments

D. Oxidation process and intermediate metabolisam

Answer: a



[Watch Video Solution](#)

307. A nutrient not required/has no function in plants except in Fabaceae, but essential nutrient of animals whose deficiency makes a person anemic as it is an integral part of vitamin B_{12} , and this nutrient is

- A. Iron
- B. Calcium
- C. Cobalt
- D. Cadmium

Answer: c



[Watch Video Solution](#)

308. Rickets in children and osteomalacia in adults is caused by the deficiency of

- A. Vitamin A
- B. Vitamin B and C
- C. Vitamin C
- D. Vitamin D (calciferol)

Answer: d



[Watch Video Solution](#)

309. Which one of the following is the best source for vitamin A (Antixerophthalmic)

- A. Apples
- B. Carrots
- C. Honey

D. Peanuts

Answer: b



Watch Video Solution

310. Angiotensinogen is a protein produced and secreted by

A. Liver cells

B. Juxtaglomerular (JG) cells

C. Macula densa cells

D. Endothelial cells (cells lining the blood vessels)

Answer: a



Watch Video Solution

311. Which one of the following is dominant intracellular cation

A. Potassium

B. Chloride

C. Phosphate

D. Calcium

Answer: a



[Watch Video Solution](#)

312. Vitamin B_{12} is available to ruminants by

A. Plants

B. Micro-organisms in caecum

C. Animals

D. All of the above

Answer: b



[Watch Video Solution](#)

313. A vitamin which is generally excreted in human urine is

OR

Earliest known vitamin is

A. C

B. K

C. A

D. D

Answer: a



[Watch Video Solution](#)

314. The richest sources of vitamin B_{12} are

A. Rice and hen's egg

B. Carrot and chicken's breast

C. Goat's liver and Spirulina

D. Chocolate and green gram

Answer:



Watch Video Solution

315. To which of the following family do folic acid and pantothenic acid belong

A. Vitamin K

B. Vitamin A

C. Vitamin C

D. Vitamin B complex

Answer: D



Watch Video Solution

316. Which of the following is the correct match

- A. Vitamin A - calciferol
- B. Vitamin E - tocopherol
- C. VitaminD- thiamine
- D. Vitamin K - ascorbic acid

Answer: B



Watch Video Solution

317. Pellagra is caused due to the deficiency of

- A. Thiamine
- B. Ascorbic acid
- C. Niacin (Nicotinic Acid) (B_5)
- D. Calciferol

Answer: C



[Watch Video Solution](#)

318. One of the factors required for the maturation of erythrocytes is

- A. Vitamin D
- B. Vitamin A
- C. Vitamin B_{12}
- D. Vitamin C

Answer: C



[Watch Video Solution](#)

319. Which of the best source for vitamin B_1

- A. Cod liver oil

B. Egg

C. Whole wheat bread

D. Curd

Answer: C



Watch Video Solution

320. Xerophthalmia in children and nyctalopia (Night blindness) in adults is caused by the deficiency of vitamin

A. A

B. D

C. E

D. K

Answer: A



Watch Video Solution

321. Which one of the following is very rich in magnesium

- A. Meat
- B. Egg
- C. Soybean
- D. Milk

Answer: C



[Watch Video Solution](#)

322. Which one of the following pairs is not correctly matched

- A. Vitamin B_1 - Beri - beri
- B. Vitamin B_5 - Pellagra
- C. Vitamin B_{12} - Pernicious anaemia
- D. Vitamin B_6 - Loss of appetite

Answer: D



[Watch Video Solution](#)

323. Which one is correctly matched

- A. Vitamin E - Thiamine
- B. Vitamin D - Riboflavin
- C. Vitamin B_1 - Tocopherol
- D. Vitamin B_{12} - Cyanocobalamine

Answer: E



[Watch Video Solution](#)

324. Which of the following is a fat soluble vitamin

- A. Thiamine

B. Folic acid

C. Ascorbic acid

D. Tocopherol

Answer: D



Watch Video Solution

325. Excessive intake of vitamin D leads to bone reabsorption and

A. Beri-beri

B. Hypercalcemia

C. Hyperkeratosis

D. Kerotomalacia

Answer: B



Watch Video Solution

326. Vitamin B_{12} is helpful

- A. In the absorption of fats
- B. To stimulate the liver
- C. To stimulate the bone marrow
- D. To increase life span of RBC

Answer: C



Watch Video Solution

327. Starch is converted to maltose by the action of

- A. Invertase
- B. Amylase
- C. Sucrase
- D. Maltase

Answer: B



Watch Video Solution

328. Recently discovered vitamin having anti-cancer properties is

- A. Vitamin B_5
- B. Vitamin B_{15}
- C. Vitamin B_{17}
- D. Vitamin Q

Answer: C



Watch Video Solution

329. How many of the twenty amino acids are essential amino acids for children

A. 6

B. 8

C. 10

D. 7

Answer: C



[Watch Video Solution](#)

330. The vitamin nicotinamide can be synthesized in our body from

A. Tyrosine

B. Valine

C. Tryptophan

D. Phenyl alanine

Answer: C



[Watch Video Solution](#)

331. Rhodopsin is synthesised with the help of

A. Vitamin A - calciferol

B. Vitamin B_{12}

C. Vitamin D

D. Vitamin B_6

Answer: A



Watch Video Solution

332. For normal absorption and deposition of calcium and phosphate the vitamin that is very necessary

A. B_1

B. B_2

C. A

D. D

Answer: D



Watch Video Solution

333. Calcium deficiency in the body occurs in the absence of

A. B_1

B. B_2

C. A

D. D

Answer: A



Watch Video Solution

334. Nutrition involving engulfment of the whole or part of a plant or an animal in solid or in liquid state is known

	Column I		Column II
(a)	Kwashiorkor	(p)	Iron
(b)	General Anaemia	(q)	Menadione
(c)	Dermatitis	(r)	Protein
(d)	Marasmus	(s)	Pyridoxin
(e)	Bleeding	(t)	Biotin

A. Holozoic

B. Saprozoic

C. Parasitic

D. Symbiotic

Answer: D

 [Watch Video Solution](#)

335. Match the following nutrition/vitamin deficiencies in column I with causes/deficiencies in column II and choose the correct option from the

answer key

A. (a) - (p) ,(b)-(t) , (c)-(q) , (d)-(r) , (e)-(s)

B. (a)-(t) , (b)-(q), (c)-(r) , (d)-(s) , (e)-(p)

C. (a)-(q) , (b)-(r), (c)-(s),(d)-(p) ,(e)-(t)

D. (a)-(r) ,(b)-(p),(c)-(t),(d)-(s),(e)-(q)

Answer: C



Watch Video Solution

336. Iodine test used to detect

A. Protein

B. Fat

C. Carbohydrate

D. Chitin

Answer: A



[Watch Video Solution](#)

337. Which one of the following is antioxidant vitamin

A. Vitamin C, E, A

B. Vitamin B_1 , B_4

C. Vitamin A, D, E

D. Vitamin B_3 , B_5

Answer: B



[Watch Video Solution](#)

338. Vitamin-C is mainly helpful in

A. Growth of bones

B. Formation of connective tissue

C. Treatment of anaemia

D. Formation of visual pigment

Answer: C



Watch Video Solution

339. Continuous bleeding from an injured part of body is due to deficiency of

A. Vitamin A - calciferol

B. Vitamin B

C. Vitamin K

D. Vitamin E

Answer: A



Watch Video Solution

340. Which group of three of the following five statements (1-5) contain all three correct statements regarding beri-beri

- 1 . A crippling disease prevalent among the native population of sub-Saharan Africa
2. A deficiency disease caused by lack of thiamine (vitamin B_1)
3. A nutritional disorder in infants and young children when the diet is persistently deficient in essential protein
- 4 . Occurs in those countries where the staple diet is polished rice
- 5 . The symptoms are pain from neuritis , paralysis , muscle wasting , progressive oedema mental deterioration and finally heart failure .

A. 2 , 4 and 5

B. 1 , 2 and 4

C. 1 , 3 and 5

D. 2 , 3 and 5

Answer: C



Watch Video Solution

341. Burning feet syndrome' is due to deficiency of

- A. Vitamin D
- B. Vitamin A
- C. Vitamin B_3
- D. Vitamin B_5

Answer: A



[Watch Video Solution](#)

342. A patient of diabetes mellitus excretes glucose in urine even when he is kept in a carbohydrates free diet . It is because

- A. Fats are catabolised to form glucose
- B. Amino acids are catabolised in liver
- C. Amino acids are discharged in blood stream from liver

D. Glycogen from muscles is released in blood stream .

Answer: C



Watch Video Solution

343. The disease due to inflammation of vermiform appendix of digestive system is known as

- A. Amoebic dysentery
- B. Intestinal cancer
- C. Appendicitis
- D. None of the above

Answer: A



Watch Video Solution

344. Which of the following is related with vitamin B_2

OR

Riboflavin is essential in our diet , as it is required for the synthesis of

A. FMN/FAD

B. NAD

C. NADH

D. $NADH_2$

Answer: A



Watch Video Solution

345. The method of intake of food in case of ciliate Paramecium

A. Holozoic

B. Saprozoic

C. Saprophytic

D. Parasitic

Answer: B



[Watch Video Solution](#)

346. Which one of the following is a matching pair of a certain body feature and its value/count in a normal human adult

A. Urea 5 - 10 mg/100 ml of blood

B. Blood sugar 80-100 mg/100 ml

C. Total blood volume 3-4 litres

D. ESR in Wintrobe method 9-15 mm per hour in males and 20-34 mm per hour in females

Answer: A



[Watch Video Solution](#)

347. Average kilocalorie of energy needed by woman is

- A. Less than man
- B. More than man
- C. Equal to man
- D. Cannot be predicted

Answer: A



Watch Video Solution

348. An average man needs approximately

- A. 2900 K cal. energy/day
- B. 500 K cal. energy/day
- C. 1000 K cal. energy/day
- D. 2000 K cal. energy/day

Answer: B



[Watch Video Solution](#)

349. The people dependent exclusively on maize diet , are more likely to suffer from

- A. Rickets
- B. Pellagra
- C. Beri-beri
- D. Dysentery

Answer: C



[Watch Video Solution](#)

350. Vasco de Gama (1498) sailed to explore India with 180 companions but most of them died due to

A. Rickets

B. Pellagra

C. Scurvy

D. Xerophthalmia

Answer: B



Watch Video Solution

351. Anti-infection vitamin is

A. B_{12}

B. A

C. D

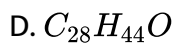
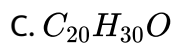
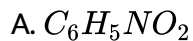
D. D

Answer: C



Watch Video Solution

352. Chemical formula of 'Retinol-1' is



Answer: D



Watch Video Solution

353. Vitamin essential for formation of collagen is

A. A

B. E

C. B_{12}

D. C

Answer: C



[Watch Video Solution](#)

354. Which one of the following is the correct matching of a vitamin , its nature and its deficiency disease

- A. Vitamin A - Fat-soluble - Beri-beri
- B. Vitamin K - water- soluble - Pellagra
- C. Vitamin A - Fat-soluble - Night blindness
- D. Vitamin- K - Fat-soluble - Beri-beri

Answer: B



[Watch Video Solution](#)

355. Vitamin E is also known as

- A. Decalcifying vitamin
- B. Antisterility vitamin
- C. Prothrombin vitamin
- D. Antiemophilic vitamin

Answer: A



Watch Video Solution

356. Vitamin A was discovered by

- A. McCollum and Davis
- B. Funk
- C. Hopkin
- D. Eijkmann

Answer: D



Watch Video Solution

357. Organisms , which obtain energy by oxidation of reduced inorganic compounds are

- A. Phototrophs
- B. Saprozoic
- C. Copro-heterotrophs
- D. Chemo-autotrophs

Answer: C



Watch Video Solution

358. Which vitamin is destroyed by ultraviolet rays

A. A

B. D

C. E

D. K

Answer: D



[Watch Video Solution](#)

359. E.coil in human colon behave as

A. Parasite

B. Commensal

C. Saprophyte

D. Mutualism

Answer: C



[Watch Video Solution](#)

360. Vitamin M is

- A. Nicotinic acid
- B. Pantothenic acid
- C. Folic acid
- D. Ascorbic acid

Answer: C



Watch Video Solution

361. The vitamin isolated from egg yolk by Kogl and Tonnis in 1943 was

- A. Vitamin K
- B. Vitamin M
- C. Vitamin H

D. Vitamin B_9

Answer: B



Watch Video Solution

362. The vitamin which helps in carbohydrates metabolism during glycolysis and TCA cycle is

A. Riboflavin

B. Thiamine

C. Folic acid

D. Pantothenic acid

Answer: A



Watch Video Solution

363. Which one of the following pairs is not correctly matched

- A. Vitamin B_6 - Beri-beri
- B. Vitamin C - Scurvy
- C. Vitamin B_5 - Pellagra
- D. Vitamin B_{12} - Pernicious anaemia

Answer: B



Watch Video Solution

364. Which set includes neurotic vitamins

- A. Vitamin B_{12} , B_5 , B_2
- B. Vitamin B_2 , B_6 , B_{12}
- C. Vitamin A, D, E
- D. Vitamin B_6 , B_{12} , K

Answer: A



Watch Video Solution

365. Which one of the following vitamins can be synthesized by bacteria inside the gut

A. B_1

B. A

C. D

D. K

Answer: B



Watch Video Solution

366. Cow's milk is slightly yellowish in colour due to the presence of

- A. Carotene
- B. Riboflavin
- C. Xanthophyll
- D. Xanthophyll and carotene

Answer: D

 [Watch Video Solution](#)

367. The water soluble materials pass through the proteins called

- A. Glycoprotein
- B. Glycocalyx
- C. Extrinsic proteins
- D. Channel proteins

Answer: C

 [Watch Video Solution](#)

368. Which combination is incorrect

- A. Niacine- Pellagra
- B. Thiamine - Beri-beri
- C. Vitamin K - Sterility
- D. Vitamin D - Rickets

Answer: B



Watch Video Solution

369. Vitamins , we must consume daily are

- A. Fat soluble
- B. Water soluble
- C. Both (a) and (b)

D. None of these

Answer: A



[Watch Video Solution](#)

370. Besides having C , H , O which one of the following also contains N , S , P etc.

A. Protein

B. Fat

C. Carbohydrate

D. Vitamin

Answer: D



[Watch Video Solution](#)

371. Which of the following does not belong to vitamin B group

A. Riboflavin

B. Nicotin

C. Cyanocobalamine

D. Tocopherol

Answer: C



Watch Video Solution

372. Milk sugar is

A. Sucrose

B. Galactose

C. Lactose

D. Glucose

Answer: D



Watch Video Solution

373. Which of the following is not a source of vitamin A

- A. Carrot
- B. Mango
- C. Apple
- D. Yeast

Answer: C



Watch Video Solution

374. What does the doctor advise to the patients suffering from high blood cholesterol

- A. Red mutton with fat layer
- B. Vegetable and margerin
- C. Vegetable oil such as ground-nut oil
- D. Pure deshi ghee or butter

Answer: V

 [Watch Video Solution](#)

375. Deficiency of copper causes

- A. Pellagra
- B. Anaemia and damage to CNS
- C. Influenza
- D. Xerophthalmia

Answer: B

 [Watch Video Solution](#)

376. The main cause of anaemia (Hypochromic or macrocytic) is

- A. Deficiency of Ca
- B. Deficiency of Fe
- C. Deficiency of Na
- D. Deficiency of Mg

Answer: D



Watch Video Solution

377. Mode of nutrition in Amoeba is

- A. Saprozoic
- B. Holophytic
- C. Coprozoic

D. Holozoic

Answer: C



[Watch Video Solution](#)

378. Balanced diet should have approximately

- A. $\frac{1}{5}$ protein , $\frac{3}{5}$ fat and $\frac{1}{5}$ carbohydrate
- B. $\frac{3}{5}$ protein , $\frac{1}{5}$ fat and $\frac{1}{5}$ carbohydrate
- C. $\frac{1}{5}$ protein , $\frac{1}{5}$ fat and $\frac{3}{5}$ carbohydrate
- D. $\frac{1}{2}$ protein , $\frac{1}{4}$ fat and $\frac{3}{5}$ carbohydrate

Answer: D



[Watch Video Solution](#)

379. Holophytic nutrition is found in

A. Amoeba

B. Giardia

C. Entamoeba

D. Euglena

Answer: C



Watch Video Solution

380. Fish - liver oils contain large amounts of

A. Vitamin K

B. Vitamin E - tocopherol

C. Vitamin A and D

D. Vitamins B_2 and C

Answer: C



Watch Video Solution

381. Conversion of milk to curd improves its nutritional value of increasing the amount of

- A. Vitamin D
- B. Vitamin A
- C. Vitamin B_{12}
- D. Vitamin E

Answer: C



Watch Video Solution

382. Select what is not true of intestinal villi among followings.

- A. They possess microvilli
- B. They increase the surface area
- C. They are supplied with capillaries and the lacteal vessels

D. They only participate in digestion of fats

Answer: D



Watch Video Solution

383. Hepato-pancreatic duct opens into the duodenum and carries

A. Bile

B. Pancreatic juice

C. Both bile and pancreatic juice

D. Saliva

Answer: C



Watch Video Solution

384. One of the following is not a common disorder associated with digestive system.

- A. Tetanus
- B. Diarrhoea
- C. Jaundice
- D. Dysentery

Answer: A



Watch Video Solution

385. A gland not associated with the alimentary canal is

<i>A.</i> Biomarcromolecules of food	<i>i.</i> Alimaentary canal and associated gland
<i>B.</i> human digestive system	<i>ii.</i> Embedded in jawbones
<i>C.</i> Stomach	<i>iii.</i> Outer wall of visceral
<i>D.</i> Thecodont	<i>iv.</i> Converted into simple substance
<i>E.</i> Serosa	<i>v.</i> J-shaped bag like structure

A. Pancreas

B. Adrenal

C. Liver

D. Salivary glands

Answer: B



Watch Video Solution

386. Match the two columns and select the correct among options given

A. $A - ii, B - i, C - v, D - iii, E - iv$

B. $A - iv, B - i, C - v, D - ii, E - iii$

C. $A - i, B - ii, C - iii, D - iv, E - v$

D. $A - i, B - iii, C - ii, D - iv, E - v$

Answer: B



View Text Solution

387. Match the two column and select the right one among option given

Column I Column II

Duodenum (i) A cartilaginous flap

Epiglottis (ii) Small blind sac

Glottis (iii) 'C' shaped structure emerging from the stomach

Caecum (iv) Opening of wind pipe

A. $A - i, B - ii, C - iii, D - iv$

B. $A - iv, B - iii, C - ii, D - i$

C. $A - iii, B - i, C - iv, D - ii$

D. $A - ii, B - iv, C - i, D - iii$

Answer: C



Watch Video Solution

388. Match the enzymes with their respective substrates and choose the right one among options given.

Column I	Column II
Lipase	(i) Dipeptides
Nuclease	(ii) Fats
Carboxypeptidase	(iii) Nucleic acids
Cipeptidases	(iv) Proteins, peptones and proteoses

A. $A - ii, B - iii, C - i, D - iv$

B. $A - iii, B - iv, C - iv, D - ii$

C. $A - iii, B - i, C - iv, D - ii$

D. $A - ii, B - iii, C - iv, D - i$

Answer: D



Watch Video Solution

389. Liver is the largest gland and is associated with various functions, choose one which is not correct.

A. Metabolism of carbohydrate

B. Digestion of fat

C. Formation of bile

D. Secretion of hormone called gastric

Answer: D



Watch Video Solution

390. Mark the right statement among the following.

- A. Trypsinogen is an inactive enzyme
- B. Trypsinogen is secreted by intestinal mucosa
- C. Enterokinase is secreted by pancreas
- D. Bile contains trypsin

Answer: A



Watch Video Solution

391. This is the common passage for bile and pancreatic juices

- A. Ampulla of Vater
- B. Ductus Choledochus
- C. Duct of Wirsung
- D. Duct of Santorini

Answer: A

 [Watch Video Solution](#)

392. Digestion in Hydra takes place within

- A. Pelvic cavity
- B. Abdominal cavity
- C. Pericardial cavity
- D. Gastrovascular cavity

Answer: D

 [Watch Video Solution](#)

393. Which is the characteristic lining of stomach of mammals .

- A. Paneth cells
- B. Deiter cells
- C. Oxyntic cells
- D. Kupffer cells

Answer: C



Watch Video Solution

394. Fatty acid and glycerol are first taken up from alimentary canal by

- A. Villi
- B. Blood capillaries
- C. Hepatic portal vein

D. Lymph vessels

Answer: D



Watch Video Solution

395. Erythropoiesis starts in

A. Kidney

B. Liver

C. Spleen

D. Red bone marrow

Answer: B



Watch Video Solution

396. In rabbit the colour of bile juice is

- A. Colourless due to the presence of sodium and potassium taurocholate
- B. Green due to the accumulation of biliverdin
- C. Red due to the accumulation of haemoglobin
- D. Yellow due to the presence of bilirubin

Answer: B



Watch Video Solution

397. During absorption of carbohydrates in the blood the most rapidly transported monosaccharide is

- A. Glucose
- B. Galactose
- C. Fructose
- D. Sucrose

Answer: B



Watch Video Solution

398. The wall of the stomach is protected against the action of HCl by

- A. Epidermal layer
- B. Mesodermal layer
- C. Mucous layer
- D. Muscular layer

Answer: C



Watch Video Solution

399. Column I contains names of the sphincter muscles of the alimentary canal and column II contains their locations. Match them properly and

choose the correct answer

	Column I		Column II
A.	Sphincter of ani internus	1.	Opening of hepatopancreatic duct into duodenum
B.	Cardiac sphincter	2.	Between duodenum and posterior stomach
C.	Sphincter of Oddi	3.	Guarding the terminal part of alimentary canal
D.	Ileocaecal sphincter	4.	Between oesophagus and anterior stomach
E.	Pyloric sphincter	5.	Between small intestine and bowel

A. A-3, B-2,C-4,D-1,E-5

B. A-2,B-5,C-1,D-4,E-3

C. A-3,B-4,C-1,D-5,E-2

D. A-4,B-3,C-1,D-2,E-5

Answer: C



Watch Video Solution

400. The pungent odour of faeces is due to presence of

- A. indole
- B. Skatole
- C. Various gases
- D. All the above

Answer: D

 [Watch Video Solution](#)

401. Maximum percentage of lipoprotein is present in

- A. Chylomicron
- B. HDL
- C. VDL
- D. VLDL

Answer: a

 [Watch Video Solution](#)

402. Where do certain symbiotic microorganisms normally occur in human body

- A. Caecum
- B. Oral lining and tongue surface
- C. Vermiform appendix and rectum
- D. Duodenum

Answer: a



Watch Video Solution

403. For the enzyme action

- A. Value of K_m is unchange
- B. Value of K_m is low
- C. Value of K_m is constant

D. Value of Km is high

Answer: b



[Watch Video Solution](#)

404. Inhibition of gastric secretion is brought about by

or

Which of these is not enzyme of digestive system

A. Cholecystokinin

B. Pancreozymin

C. Gastrin

D. Entrogastron

Answer: d



[Watch Video Solution](#)

405. A principal gastrointestinal hormone is

- A. Prolactin
- B. Choline esterase
- C. Secretin
- D. Acetyl

Answer: c



Watch Video Solution

406. The activator of intestinal juice is

or

Mechanical stimulation of villi by the food produces a hormone which is known as

- A. Succus entericus
- B. Secretin

C. Enterocrinin

D. Enterozymase

Answer: c



Watch Video Solution

407. Anxiety and eating spicy food together in an otherwise normal human, may lead to

A. Indigestion

B. Jaundice

C. Diarrhoea

D. Vomiting

Answer: a



Watch Video Solution

408. Wisdom teeth in human is

- A. 3rd molar & 4 in number
- B. 3rd molar & 2 in number
- C. 2nd molar & 4 in number
- D. 2nd molar & 2 in number

Answer: a



Watch Video Solution

409. In the stomach, gastric acid is secreted by the

- A. Gastrin secreting cells
- B. Parietal cells
- C. Peptic cells
- D. Acidic cells

Answer: b



Watch Video Solution

410. Which of the following can be called 'animal starch'?

A. Hemicellulose

B. Glucose

C. Glycogen

D. Chitin

Answer: c



Watch Video Solution

411. One of the following is needed for the conversion of trypsinogen into trypsin

or

Trypsinogen is an inactivate enzyme secreted by the pancreas. It is activated by

- A. HCl
- B. Enterokinase
- C. Liapse
- D. Zymase

Answer: b



Watch Video Solution

412. Leison in ventromedial hypothalmus

- A. Increase hunger
- B. Decrease hunger
- C. Do not change hunger
- D. Stop eating

Answer: b



Watch Video Solution

413. Antihæmorrhagic vitamin is

- A. Vitamin A
- B. Vitamin B
- C. Vitamin C
- D. Vitamin K

Answer: d



Watch Video Solution

414. The mine worker are most likely to suffer from

- A. Beri-beri

B. Osteomalacia

C. Scurvy

D. Xerophthalmia

Answer: b



Watch Video Solution

415. Write proper option by matching column I, II and III

Column I (Name)		Column II (Enzyme)		Column III (Function)	
(i)	Gastric Juice	(P)	Chymo- trypsinogen	(A)	Dipeptide convert into amino acid
(ii)	Intestinal Juice	(Q)	Ptyalin	(B)	Proteoses convert into small polypeptides
(iii)	Saliva	(R)	Renin	(C)	Casein convert into paracasein
(iv)	Pancreat ic juice	(S)	Erepsin	(D)	Conversion of starch into maltose

A. (i-R-C)(ii-S-A)(iii-Q-B)(iv-P-D)

B. (i-R-C)(ii-S-A)(iii-Q-D)(iv-P-B)

C. (i-S-D)(ii-R-C)(iii-P-B)(iv-Q-A)

D. (i-Q-A)(ii-P-C)(iii-R-B)(iv-S-D)

Answer: b



Watch Video Solution

416. Wound healing is enhanced by a Vitamin

A. A

B. C

C. D

D. E

Answer: b



Watch Video Solution

417. Which of the following pair is characterised by swollen lips, thick pigmented skin of hands and legs and irritability

- A. Iodine -Goitre
- B. Protein - Kwashiorkor
- C. Thiamine- Beri-Beri
- D. Nicotinamide- Pellagra

Answer: d



Watch Video Solution

418. Select the mismatch between a vitamin and its deficiency disease, among the following

- A. Riboflavin-slow clotting of blood
- B. Niacin - damage to skin and lining of intestine
- C. Ascorbic acid-scurvy

D. Thiamine-damage to nerves and heart.

Answer: a



[Watch Video Solution](#)

419. The delicious food generally makes mouth watery. It is due to

A. Hormonal response

B. Neural reponse

C. Olfactory response

D. Optic response

Answer: b



[Watch Video Solution](#)

420. A triglyceride molecule has or A typical fat molecule is made up of

- A. Three fattyacids with one glycerol molecule
- B. three fattyacids with two glycerol molecule
- C. Two fattyacids with two glycerol molecules
- D. One fattyacid with one glycerol molecule

Answer: a

 [Watch Video Solution](#)

421. Excessive stimulatio of vagus nerve in human may lead to

- A. Hoarse voice
- B. Peptic ulcers
- C. Efficient digestion of proteins
- D. Irregular contraction of diaphragm

Answer: b

 [Watch Video Solution](#)

422. Protein deficiency in children is called

Or

In Africa and South-east Asia, people like to have much bread and butter than pulses. They suffer

- A. Obesity
- B. Marasmus
- C. Diabetes
- D. Kwashiorkor

Answer: d



Watch Video Solution

423. The intestine is different from the stomach by the presence of

- A. Digestive gland

B. Villi

C. Sub-mucosa

D. Serosa

Answer: b



Watch Video Solution

424. In the empty stomach, mucosal folds appear, They are called

A. Fiveoles

B. Ancinura angularis

C. Rugae

D. None

Answer: c



Watch Video Solution

425. Which of the following controls the peristaltic movement of the intestine

- A. Sacral plexus
- B. Brachial plexus
- C. Discoidal plexus
- D. Auerbach's plexus

Answer: d



Watch Video Solution

426. Secretin hormone is secreted by

- A. Liver
- B. Pancreas
- C. Intestine
- D. Brunner's glands

Answer: d



Watch Video Solution

427. Consider the following statements

A. The anti pellagra vitamin is nicotinamide present in milk, yeast, meat and leafy vegetables

B. Crypts of Leiberkuhn are present in the liver

C. Steapsin is the pancreatic amylase

A. A and B correct

B. B and C correct

C. A and C correct

D. B and C incorrect

Answer: d



Watch Video Solution

428. Digestion process in humans is

- A. Extracellular
- B. Intracellular
- C. Intercellular
- D. Both (a) and (c)

Answer: d



Watch Video Solution

429. Mumps are caused due to Excessive cold

- A. Excessive cold
- B. Viral infection in tonsils
- C. Viral infection of parotid salivary glands
- D. Viral infection of zygomatic glands

Answer: c



Watch Video Solution

430. The folds of Kerkring are developed in

- A. Duodenum
- B. Jejunum
- C. Ileum
- D. Large intestine

Answer: b



Watch Video Solution

431. Mackel's diverticulum is found in

- A. Ileum

B. Appendix

C. Pylorus

D. Rectum

Answer: a



[Watch Video Solution](#)

432. Which of the following carries glucose from digestive tract to liver

A. Hepatic artery

B. Pulmonary vein

C. Hepatic portal vein

D. Renal portal system

Answer: c



[Watch Video Solution](#)

433. Which of the following sugar is absorbed from the small intestine by facilitated diffusion

- A. Fructose
- B. Glucose
- C. Sucrose
- D. Lactose

Answer: A



[Watch Video Solution](#)

434. Mammals drink water and also obtain it from

- A. Break down of glycogen into glucose
- B. Secretion of saliva
- C. Conversion of oxyhaemoglobin to haemoglobin
- D. Oxidation of glucose

Answer: D

 Watch Video Solution

435. Select the correct match of the digested products in humans given in column I with their absorption site and mechanism in Column II

	Column I	Column II
(a)	Cholesterol, maltose	Large intestine, active absorption
(b)	Glycine, glucose	Small intestine, active absorption
(c)	Fructose, Na^+	Small intestine, passive absorption
(d)	Glycerol, fatty acids	Duodenum, move as chylomicrons

 Watch Video Solution

436. A healthy person eats the following diet- 5gm raw sugar, 4gm albumin, 10 gm pure buffalo ghee adulterated with 2 gm vegetable ghee (

hydrogenated vegetable oil) and 5 gm lignin. How many calories he is likely to get

A. 126

B. 164

C. 112

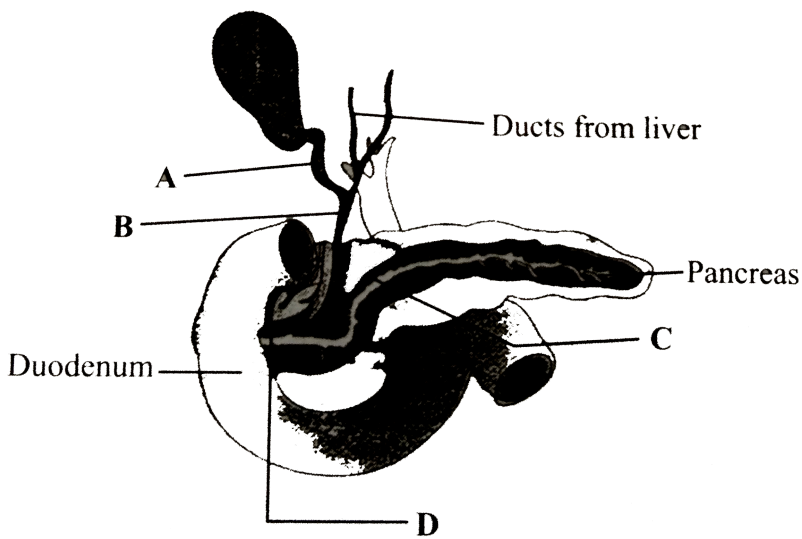
D. 144

Answer: d



Watch Video Solution

437. The given diagram shows a duct system of liver, gall bladder and pancreas. Write the names of ducts from A to D.



A. A- Cystic duct, B- Pancreatic duct, C-Bile duct, D-Hepto- pancreatic duct

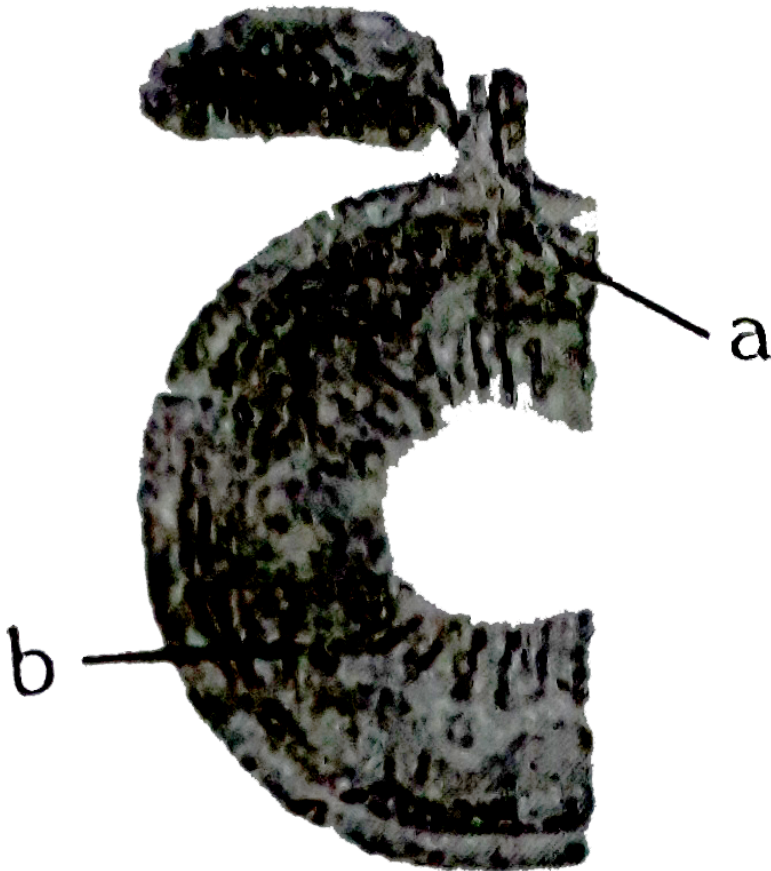
B. A- Cystic duct, B-Bile duct , C- Hepto- pancreatic duct , D- Pancreatic duct

C. A- Bile duct, B-Cystic duct, C- Pancreatic duct, D- Hepto- pancreatic duct

D. A- Cystic duct , B-Bile duct, C- Pancreatic duct, D- Hepto- pancreatic duct

Answer: d

438. Which option is correct for the region labelled as 'a' and 'b' in the given diagram of transverse section of gut



A. a= Nerve,

b= Circular muscle

B. a=Sub mucosal plexus of vessels,

b= Mucosal gland

C. a= Villi

b=Mucosal gland

D. a=Longitudinal muscle,

Muscularis mucosa

Answer: b



Watch Video Solution

439. Pituitary gland is located in 'a' , which is a 'b' and 'c' done

A. a= sella turcica, b=Raised surface, c=Ethmoid

B. a=Reketh's pouch, b=Depression, c=Nasal

C. a=Sella turcial, b=Depression, c=Sphenoid

D. a=Reketh's pauch, b=Depression, c=Sphenoid

Answer: c

 [Watch Video Solution](#)

440. The enzyme that is not present in succus entericus is

A. Nucleases

B. Nucleosidase

C. Lipase

D. Maltase

Answer: a

 [Watch Video Solution](#)

441. Good vision depends on adequate intake of carotene rich food

Select the best option from the following statements

(A) Vitamin A derivatives are formed from carotene

(B) The photopigments are embedded in the membrane discs of the inner segment

(C) Retinal is a derivative of Vitamin A

(D) Retinal is a light absorbing part of all the visual photopigments

A. (A) and (B)

B. (A), (C) and (D)

C. (A) and (C)

D. (B), (C) and (D)

Answer: B



Watch Video Solution

442. Read the assertion and reason carefully to mark the correct option out of the option given below:

Assertion: Blood sugar level falls rapidly after hepatectomy.

Reason: The glycogen of the liver is the principal source of blood sugar

- A. If both the assertion and the reason are true and the reason is a correct explanation of the assertion
- B. If both the assertion and the reason are true but the reason is a not correct explanation of the assertion
- C. If the assertion is true but the reason is false
- D. If both the assertion and reason are false

Answer: a



Watch Video Solution

443. Read the assertion and reason carefully to mark the correct option out of the option given below:

Assertion: Arachidic acid is an unstruated fatty acid

Reason: There are present one or more double bods between carbon atoms in unsaturated fatty acid

- A. If both the assertion and the reason are true and the reason is a correct explanation of the assertion
- B. If both the assertion and the reason are true but the reason is a not correct explanation of the assertion
- C. If the assertion is true but the reason is false
- D. If both the assertion and reason are false

Answer: d



Watch Video Solution

444. Read the assertion and reason carefully to mark the correct option out of the option given below:

Assertion: Rumen of alimentary canal of ruminant animals harbour numerous bacteria and protozoa.

Reason : Bacteria and protozoa help in the secretion of gastric juice in the rumen.

- A. If both the assertion and the reason are true and the reason is a correct explanation of the assertion
- B. If both the assertion and the reason are true but the reason is a not correct explanation of the assertion
- C. If the assertion is true but the reason is false
- D. If both the assertion and reason are false

Answer: c



Watch Video Solution

445. Read the assertion and reason carefully to mark the correct option out of the option given below:

Assertion: Many tube like glands are present in the wall of small intestine.

Reason : These glands secrete enzymes DNase and RNase into the intestinal juice.

- A. If both the assertion and the reason are true and the reason is a correct explanation of the assertion
- B. If both the assertion and the reason are true but the reason is a not correct explanation of the assertion
- C. If the assertion is true but the reason is false
- D. If both the assertion and reason are false

Answer: c



Watch Video Solution

446. Read the assertion and reason carefully to mark the correct option out of the option given below:

Assertion: Minerals are not biologically active substance.

Reason : Some individuals suffer anaemia due to deficiency of copper.

- A. If both the assertion and the reason are true and the reason is a correct explanation of the assertion
- B. If both the assertion and the reason are true but the reason is a not correct explanation of the assertion
- C. If the assertion is true but the reason is false
- D. If both the assertion and reason are false

Answer: d



Watch Video Solution

447. Read the assertion and reason carefully to mark the correct option out of the option given below:

Assertion: Thick layers of muscles are present in the wall of alimentary canal.

Reason: These muscles help in the mixing of food materials with the enzymes coming from different glands in the alimentary canal.

- A. If both the assertion and the reason are true and the reason is a correct explanation of the assertion
- B. If both the assertion and the reason are true but the reason is a not correct explanation of the assertion
- C. If the assertion is true but the reason is false
- D. If both the assertion and reason are false

Answer: a



Watch Video Solution

448. Assertion : In alcoholic fermentation, the hexose molecule is converted into glucose and fructose.

Reason : Alcoholic fermentation is anaerobic respiration brought about by enzyme zymase.

- A. If both the assertion and the reason are true and the reason is a correct explanation of the assertion
- B. If both the assertion and the reason are true but the reason is a not correct explanation of the assertion
- C. If the assertion is true but the reason is false
- D. If the assertion is false but reason is true

Answer: d



Watch Video Solution

449. Read the assertion and reason carefully to mark the correct option out of the option given below:

Assertion: Insulin is secreted by α -cells of islets of langerhans of pancreas.

Reason :Insulin promotes conversion of glusoce to glycogen.

- A. If both the assertion and the reason are true and the reason is a correct explanation of the assertion
- B. If both the assertion and the reason are true but the reason is a not correct explanation of the assertion
- C. If the assertion is true but the reason is false
- D. If the assertion is false but reason is true

Answer: d



Watch Video Solution

450. Read the assertion and reason carefully to mark the correct option out of the option given below:

Assertion: Carbohydrates are more suitable for the production of energy

in the body than proteins and fats.

Reason : Carbohydrates can be stored in the tissues as glycogen for use in the production of energy, whenever necessary.

- A. If both the assertion and the reason are true and the reason is a correct explanation of the assertion
- B. If both the assertion and the reason are true but the reason is a not correct explanation of the assertion
- C. If the assertion is true but the reason is false
- D. If both the assertion and reason are false

Answer: b



[Watch Video Solution](#)

451. Read the assertion and reason carefully to mark the correct option out of the option given below:

Assertion: The amino acid glycine comes under the category of

nonessential amino acids.

Reason : This due to the fact that it can not be synthesised in the body.

- A. If both the assertion and the reason are true and the reason is a correct explanation of the assertion
- B. If both the assertion and the reason are true but the reason is a not correct explanation of the assertion
- C. If the assertion is true but the reason is false
- D. If both the assertion and reason are false

Answer: c



Watch Video Solution

452. Read the assertion and reason carefully to mark the correct option out of the option given below:

Assertion: Scurvy is caused by deficiency of vitamin.

Reason :Deficiency of ascorbic acid causes scurvy.

- A. If both the assertion and the reason are true and the reason is a correct explanation of the assertion
- B. If both the assertion and the reason are true but the reason is a not correct explanation of the assertion
- C. If the assertion is true but the reason is false
- D. If both the assertion and reason are false

Answer: a



Watch Video Solution

453. Read the assertion and reason carefully to mark the correct option out of the option given below:

Assertion: The main part of carbohydrate digestion takes place in small intestine.

Reason : Here pancreatic amylase converts carbohydrates into lactose.

- A. If both the assertion and the reason are true and the reason is a correct explanation of the assertion
- B. If both the assertion and the reason are true but the reason is a not correct explanation of the assertion
- C. If the assertion is true but the reason is false
- D. If both the assertion and reason are false

Answer: c



Watch Video Solution

454. Read the assertion and reason carefully to mark the correct option out of the option given below:

Assertion: In alcoholic drink, the alcohol is converted into glucose in the liver.

Reason : Liver cells are able to produce glucose form alcohol by back fermentation.

- A. If both the assertion and the reason are true and the reason is a correct explanation of the assertion
- B. If both the assertion and the reason are true but the reason is a not correct explanation of the assertion
- C. If the assertion is true but the reason is false
- D. If both the assertion and reason are false

Answer: d



Watch Video Solution

455. Read the assertion and reason carefully to mark the correct option out of the option given below:

Assertion: Adult human being is not perfect in digestin of milk.

Reason: With age, man produces little or no lactase in the intestinal juice.

- A. If both the assertion and the reason are true and the reason is a correct explanation of the assertion

- B. If both the assertion and the reason are true but the reason is a not correct explanation of the assertion
- C. If the assertion is true but the reason is false
- D. If both the assertion and reason are false

Answer: a

 [View Text Solution](#)

456. Read the assertion and reason carefully to mark the correct option out of the option given below:

Assertion: Trypsin helps in blood digestion of predator animals.

Reason : Trypsin hydrolyses fibrinogen.

- A. If both the assertion and the reason are true and the reason is a correct explanation of the assertion
- B. If both the assertion and the reason are true but the reason is a not correct explanation of the assertion

C. If the assertion is true but the reason is false

D. If both the assertion and reason are false

Answer: a



Watch Video Solution

457. Read the assertion and reason carefully to mark the correct option out of the option given below:

Assertion: Volume and fluidity of intestinal contents have increased in a person.

Reason : The person drank sea water.

A. If both the assertion and the reason are true and the reason is a correct explanation of the assertion

B. If both the assertion and the reason are true but the reason is a not correct explanation of the assertion

C. If the assertion is true but the reason is false

D. If both the assertion and reason are false

Answer: a

 [Watch Video Solution](#)

458. Read the assertion and reason carefully to mark the correct option out of the option given below:

Assertion: Sea-faring fisherman sometimes eat raw fish.

Reason: They can be deficient of Vitamin B_1 .

- A. If both the assertion and the reason are true and the reason is a correct explanation of the assertion
- B. If both the assertion and the reason are true but the reason is a not correct explanation of the assertion
- C. If the assertion is true but the reason is false
- D. If both the assertion and reason are false

Answer: a



[Watch Video Solution](#)

459. Read the assertion and reason carefully to mark the correct option out of the option given below:

Assertion: Starch is hydrolysed by ptyalin to maltose.

Reason : Sucrase hydrolyses sucrose to lactose.

- A. If both the assertion and the reason are true and the reason is a correct explanation of the assertion
- B. If both the assertion and the reason are true but the reason is a not correct explanation of the assertion
- C. If the assertion is true but the reason is false
- D. If both the assertion and reason are false

Answer: d



[Watch Video Solution](#)

460. Read the assertion and reason carefully to mark the correct option out of the option given below:

Assertion: Cold blooded animals have no fat layer.

Reason : Cold blooded animals use their fat for metabolic process during hibernation.

- A. If both the assertion and the reason are true and the reason is a correct explanation of the assertion
- B. If both the assertion and the reason are true but the reason is a not correct explanation of the assertion
- C. If the assertion is true but the reason is false
- D. If both the assertion and reason are false

Answer: b



[View Text Solution](#)

461. Read the assertion and reason carefully to mark the correct option out of the option given below:

Assertion: Absorption of digested food mainly occurs in the stomach.

Reason : Stomach produces the hormone gastrin and the intrinsic factor and it liquifies ingested food.

- A. If both the assertion and the reason are true and the reason is a correct explanation of the assertion
- B. If both the assertion and the reason are true but the reason is a not correct explanation of the assertion
- C. If the assertion is true but the reason is false
- D. If the assertion is false but reason is true

Answer: d



Watch Video Solution