



BIOLOGY

BOOKS - UNIVERSAL BOOK DEPOT 1960 BIOLOGY (HINGLISH)

MORPHOLOGY OF ANIMALS

Morphology Of Animals

1. Frogs and toads belong to the order

A. Anura

B. Apoda

C. Caudata

D. Gymnophiona

Answer: A

 [Watch Video Solution](#)

2. The cloaca in frog is a common chamber for the urinary tract, reproductive tract and

- A. Alimentary canal
- B. Portal system
- C. Hepaticportal vessels
- D. Notochord

Answer: A

 [Watch Video Solution](#)

3. Which one of the following is not a characteristic feature of frog

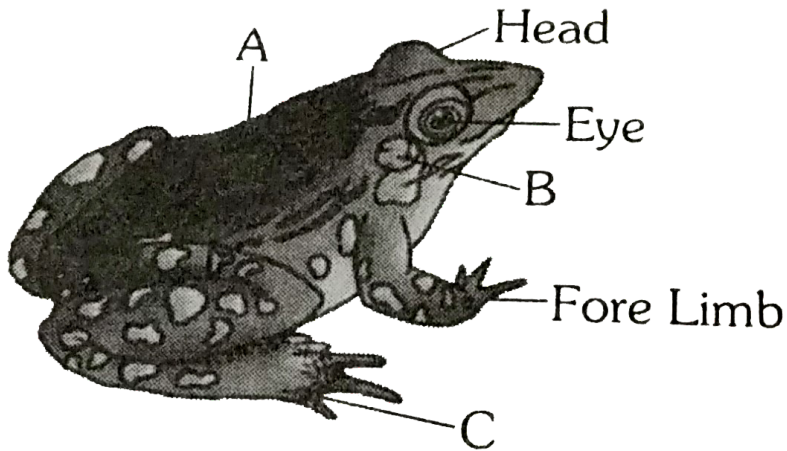
- A. The skin is moist and slimy
- B. Each of the fore limbs and hind limbds end in five digits
- C. Hepatic portal and renal portal systems are present
- D. Skin, buccal cavity and lungs are the respiratory organs

Answer: B



Watch Video Solution

4. See the following figure and identify A to C respectively.



A. Neck, Tympanum, Hind limb

B. Trunk, Tympanum, Hindi limb

C. Neck, Brown eye spot, Web

D. Trunk, Tympanum, Web

Answer: D



Watch Video Solution

5. The scientific name of common toad is

- A. *Hyla arborea*
- B. *Xenopus laevis*
- C. *Bufo melanostictus*
- D. *Bombinator igneus*

Answer: C



Watch Video Solution

6. The toad possesses

- A. Bifid tongue, slippery skin and mucous glands
- B. Salivary glands, mucous glands and parotid glands
- C. Parotid glands, warty skin and semicircular snout

D. Slippery skin, yellow pigment and abundant mucous glands

Answer: C



Watch Video Solution

7. Parotid glands are found in

A. Bufo

B. Hyla

C. Rana

D. Alytes

Answer: A



Watch Video Solution

8. Which statement is true about the venous blood vessels of frog

- A. Lingual and submandibular unite to form the internal jugular
- B. Musculo-cutaneous and brachial unite to form the subclavian
- C. The ventral abdominal vein drains into the posterior vena cava
- D. The pelvic veins unite to form the renal portal vein

Answer: B



[View Text Solution](#)

9. Frog hibernate during

A. Winter

B. Spring

C. Summer

D. autumm

Answer: A



Watch Video Solution

10. The summer sleep of frog is termed as

A. Neoteny

B. Aestivation

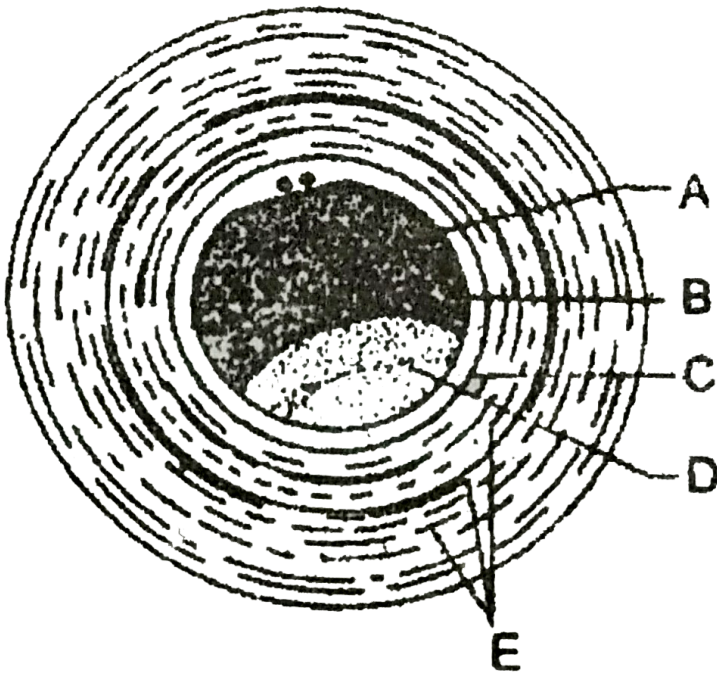
C. Paedogenesis

D. Hibernation

Answer: B

 Watch Video Solution

11. The following is a diagram of the just spawned frog's egg, with the parts labelled from A to E. Identify the parts and choose the correct option from those given below



A. A= cytoplasm, B = plasma membrane, C = vitelline membrane, D = yolk, E = jelly coat

B. A = cytoplasm, B = vitelline membrane, C = plasma membrane, D = yolk, E = jelly coat

C. A = yolk, B = plasma membrane , C = vitelline membrane, D = cytoplasm, E = jelly coat

D. A = yolk, B = jelly coat, C = vitelline membrane = D cytoplasm, E = plasma membrane

Answer: A



Watch Video Solution

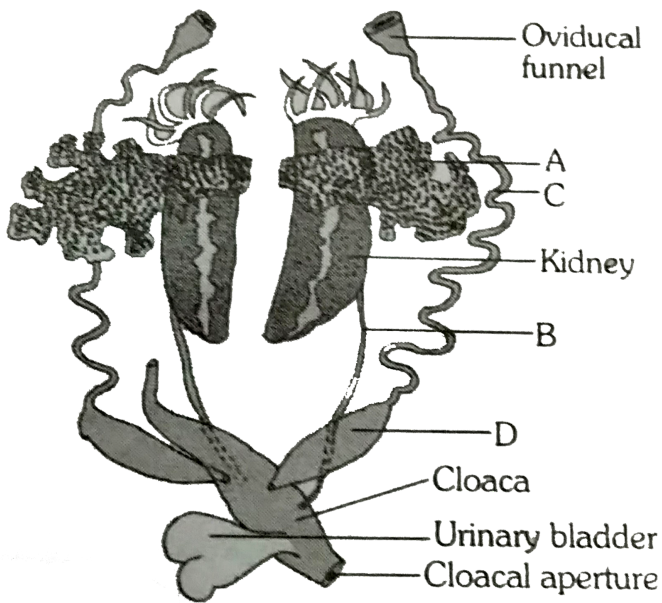
12. Dissection of frog is done from ventral side because

- A. Ventralskin is soft
- B. Abdominal vein is present ventrally
- C. Vertebral column is present on dorsal side
- D. All of these

Answer: C

 [Watch Video Solution](#)

13. The given figure is related with female reproductive system of frog. Identify A to D



- A. *A* *B* *C* *D*
 Ovary Urinogenital duct Bidder's canal Oviduct
- B. *A* *B* *C* *D*
 Ovary Urinogenital duct Oogvisac Oviduct
- C. *A* *B* *C* *D*
 Ovary Urinogenital duct Bidder's canal Oviduct
- D. *A* *B* *C* *D*
 Ovary Ureter Oviduct Ovisac

Answer: D

 **Watch Video Solution**

14. Male frogs can croak louder than females because of

- A. Vocal sacs
- B. Stronger
- C. Larger in size
- D. Larger sound box

Answer: A



Watch Video Solution

15. Croaking of frog is

- A. Hunger call
- B. Danger call
- C. Muscial tone

D. Sex call for female

Answer: D



Watch Video Solution

16. The development of frog is

A. Direct

B. Indirect

C. Parthenogenetic

D. None of these

Answer: B



Watch Video Solution

17. How many eggs are laid by a female frog at a time

- A. 100 - 200
- B. 500 - 1000
- C. 2500 - 3000
- D. 5000 - 6000

Answer: C



Watch Video Solution

18. The opening of rectum in frog is called

- A. Vestibule
- B. Cloaca
- C. Coccyx

D. None of the above

Answer: B



Watch Video Solution

19. A common cloacal aperture is found in

A. Rana

B. Nereis

C. Rabbit

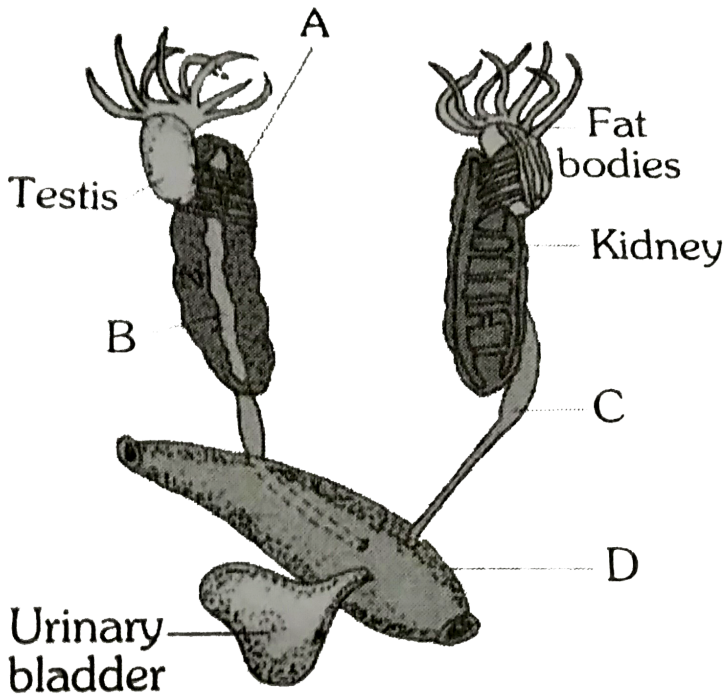
D. Pheretima

Answer: A



Watch Video Solution

20. Observe the following figure indicating the male reproductive system of frog. Identify A,B, C and D



A.

<i>A</i>	<i>B</i>	<i>C</i>	<i>D</i>
Vasa efferentia	Thyroid gland	Urinogenital duct	Cloaca

B.

<i>A</i>	<i>B</i>	<i>C</i>	<i>D</i>
Vase efferentia	Adrenal gland	Urinogenital duct	Cloaca

C.

<i>A</i>	<i>B</i>	<i>C</i>	<i>D</i>
Bidder's canal	Adrenal gland	Urinogential duct	Cloaca

D.

<i>A</i>	<i>B</i>	<i>C</i>	<i>D</i>
Bidder's canal	Adrenal gland	Urinogential duct	Rectum

Answer: B



[Watch Video Solution](#)

21. Disappearance of the tadpole tail during metamorphosis is brought about by

- A. Endoplasmic
- B. Golgi bodies
- C. Lysosomes
- D. Peroxisomes

Answer: C



Watch Video Solution

22. The number of fingers in the hindlimb of frog is

A. 4

B. 5

C. 6

D. 7

Answer: B



Watch Video Solution

23. In the buccal cavity of frog the internal nares are

- A. One
- B. Two
- C. Fused
- D. Absent

Answer: B



Watch Video Solution

24. Mucus helps frog in making

- A. Dry skin
- B. Moist skin
- C. Rough skin
- D. Thick skin

Answer: B



Watch Video Solution

25. Acrosome of the sperm of frog helps in fertilization by

- A. Activating the oocyte to engulf the sperm
- B. Inducing formation of cone of reception in oocyte
- C. Stimulating oocyte to undergo second maturation division
- D. Secreting sperm lysin to dissolve covering membrane of oocyte

Answer: D



Watch Video Solution

26. Chromatophores in skin of frog found in stratum

- A. Corneum
- B. Compactum
- C. Germinativum
- D. Mostly spongiosum

Answer: D



Watch Video Solution

27. One of the main functions of frog's skin is

- A. Diffusion of respiratory gases
- B. Absorption of ultraviolet rays to produce vitamin D
- C. Storage of excess food in the form of subcutaneous fat

D. Excretion of nitrogenous waste in the form of uric acid

Answer: A

 [Watch Video Solution](#)

28. When a sperm enters an egg of frog

- A. First polar body is formed
- B. First meiotic division occurs
- C. Second meiotic division occurs
- D. Fertilization process is completed

Answer: C

 [Watch Video Solution](#)

29. In frog, jelly around the eggs is deposited in

- A. Ovary
- B. Oviduct
- C. Water after fertilization
- D. Water during fertilization

Answer: B



[Watch Video Solution](#)

30. Consider the following four statements (*A – D*) related to the common frog *Rana tigrina* and select the correct option stating which ones are true (T) and which ones are false (F)

Statements :

(A) On dry land it would die due to lack of O_2 of its mouth is

forcibly kept closed for a few days

(B) It has four-chambered heart

(C) ON dry land it turns uricotelic from ureotelic

(D) Its life-history is carried out in pond water

A. (A) (B) (C) (D).
F F T T

B. (A) (B) (C) (D).
F T T F

C. (A) (B) (C) (D).
T F F T

D. (A) (B) (C) (D).
T T F F

Answer: C



Watch Video Solution

31. A Bidder's canal in each kidney of frog

A. Runs longitudinally in lateral region of kidney

B. Runs longitudinally in medial region of kidney

C. Runs transversely across the width of anterior part of kidney

D. Runs transversely across the width of posterior part of kidney

Answer: B



Watch Video Solution

32. In frog, the surface of attachment of tongue is

A. Palatine

B. Sphenoid

C. Hyoid apparatus

D.

Answer: D



Watch Video Solution

33. Read the statements with regard to frog. Which of the statement(s) is/are correct and incorrect

1. The medulla oblongata passes out through foramen of Monro and continues into spinal cord

2. Vasa efferentia are 10 -12 in number that arise from testes

3. Ovaries have no functional connection with kidneys

4. Frogs are uricotellic

A. 1,2 and 3 are correct but 4 is incorrect

B. 1 and 2 are correct while 3 and 4 are incorrect

C. 2 and 3 are correct while 1 and 4 are incorrect

D. 2,3 and 4 are correct while 1 is incorrect

Answer: C

 [Watch Video Solution](#)

34. In frog pyloric sphincter is located between

- A. Fundus and phlorus
- B. Cardiac and fundus
- C. Oesophagus and pharynx
- D. Stomach and duodenum

Answer: D

 [Watch Video Solution](#)

35. In frog, digestion of fats occurs mostly in

A. Rectum

B. Stomach

C. Duodenum

D. Small intestine

Answer: D



Watch Video Solution

36. A fully grown tadpole larva of frog respire through

A. Gills

B. Skin

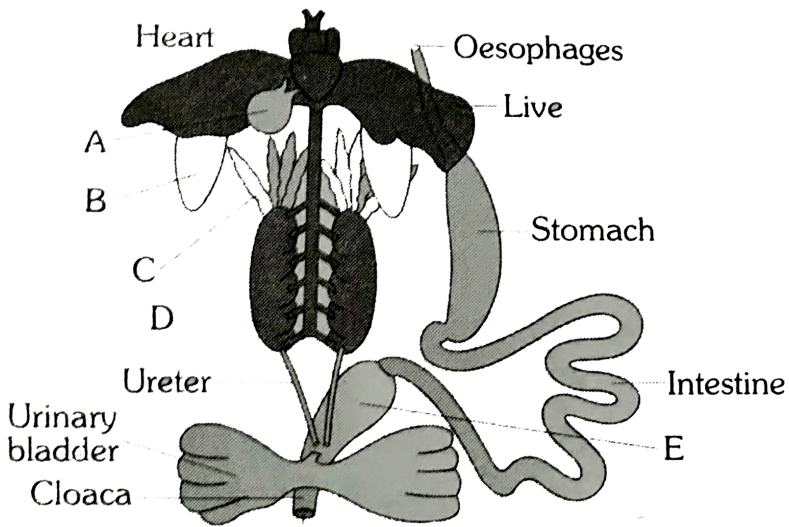
C. Lungs

D. Tail fin

Answer: A

 Watch Video Solution

37. The given figure is related to diagrammatic representation of internal organs of frog. Identify A to E



- A. *A* *B* *C* *D* *E*
Gall bladder Lung Fat bodies Kidney Rectum
- B. *A* *B* *C* *D* *E*
Gall bladder Lung Testis Kidney Rectum

- C.

<i>A</i>	<i>B</i>	<i>C</i>	<i>D</i>	<i>E</i>
Gall bladder	Lung	Fat bodies	Testis	Rectum
- D.

<i>A</i>	<i>B</i>	<i>C</i>	<i>D</i>	<i>E</i>
Gall bladder	Lung	Ovary	Testis	Rectum

Answer: A

 [Watch Video Solution](#)

38. If the mouth of frog is kept open for some time, it dies because it is unable to

- A. Eat
- B. Drink
- C. Breath
- D. None of these

Answer: C

 [Watch Video Solution](#)



[Watch Video Solution](#)

39. During hibernation, frog respire with

- A. Lung only
- B. Moist skin only
- C. Buccal cavity only
- D. External gills and lungs

Answer: B



[Watch Video Solution](#)

40. Oxygen carrier or the respiratory pigment in blood of frog and other vertebrates is

- A. Myoglobin

B. Cytochrome

C. Haemoglobin

D. Haemocyanin

Answer: C



Watch Video Solution

41. A frog must swallow air to expand the lungs because frog

A. Has no diaphragm

B. Has no vagus nerve

C. Is relatively primitive vertebrate

D. Normally breathe through its skin

Answer: A



[Watch Video Solution](#)

42. In frog, glottis is controlled by muscles of

- A. Sternum
- B. Vocal cords
- C. Pectoral girdle
- D. Arytenoid cartilages

Answer: D



[Watch Video Solution](#)

43. The lungs in frogs are

- A. Compact spongy masses

- B. Thin-walled elastic, hollow bags
- C. Thick-walled nonelastic, hollow bags
- D. Thick-walled nonelastic solid masses

Answer: B



Watch Video Solution

44. In frog, respiration occurs by

- A. Lungs
- B. Trachea
- C. Gills only
- D. Both (a) and (b)

Answer: A

 [Watch Video Solution](#)

45. In which of these animals, skin serves as an accessory organ of respiration

- A. Bird
- B. Frog
- C. Lizard
- D. Rabbit

Answer: B

 [Watch Video Solution](#)

46. In frog, cutaneous respiration takes place

- A. Always
- B. Only on land
- C. Only in water with pulmonary respiration
- D. Only in water pulmonary respiration is not occurring

Answer: A



Watch Video Solution

47. The epithelial lining of respiratory system in frog is derived by

- A. Ectoderm
- B. Endoderm
- C. Mesoderm
- D. Mesoderm and endoderm

Answer: B



Watch Video Solution

48. Frogs differ from humans in possessing

- A. Nucleated red blood cells
- B. Thyroid as well as parathyroid
- C. Paired cerebral hemispheres
- D. Hepatic portal system

Answer: A



Watch Video Solution

49. Heart of frog differs from that of man by presence of
or

Heart of rat differs from that of frog by the absence of

- A. Two aortae
- B. Mitral value
- C. Sinus vanosus
- D. Four-chambers

Answer: C



Watch Video Solution

50. The sinus venosus is located on

- A. Dorsal surface of the heart of frog

- B. Ventral surface of the heart fo frog
- C. Dorsal surface of the heart of rabbit
- D. Ventral surface on the heart of rabbit

Answer: A

 [Watch Video Solution](#)

51. In frog

- A. Acetylochine is the only neurotransmitter
- B. Noradrenaline is the only neurotransmitter
- C. Both acetylochine and noradrenaline act as neurotransmitters

D. Neither acetylcholine nor noradrenaline acts as
neuronutransmitter

Answer: C

 [Watch Video Solution](#)

52. Amphibian heart is

- A. One-chambered
- B. Three-chambered
- C. Two-chambered
- D. Four-chambered

Answer: B

 [Watch Video Solution](#)

53. Ureters act as urinogenital ducts in

- A. Frog's both males and females
- B. Frog's males
- C. Human males
- D. Human females

Answer: B



Watch Video Solution

54. Mesorchium in frog refers to

- A. Fold of peritoneum between a kidney and a testis
- B. Internal tissue of testes

C. Capsules of testes

D. None of these

Answer: A



[Watch Video Solution](#)

55. When heart of frog is cut, it will

A. Not beat at all

B. Stop beating soon after

C. Continue to beat for a long time it kept dry

D. Continue to beat for a long time it kept moist

Answer: D



[Watch Video Solution](#)

56. The heart of frog beats at the rate of

- A. 25 times/min.
- B. 64 times/min
- C. 72 times/min
- D. 100 times/min

Answer: B



Watch Video Solution

57. The venous system of frog differs from that of rabbit in having

- A. Hepatic vein

- B. THree vena cavae
- C. Renal portal system
- D. Hepatic portal system

Answer: C



Watch Video Solution

58. In frog the vein that carries blood from tongue is termed

- A. Lingual
- B. Azygous
- C. Cutaneous
- D. Anterior abdominal

Answer: A

 [Watch Video Solution](#)

59. Sciatic vein of frog opens in

- A. Heart
- B. Kidney
- C. Pelvic region
- D. Liver

Answer: C

 [Watch Video Solution](#)

60. Chromatophores in frog's skin are controlled by

- A. Hormones

B. Environement

C. Nervous activity

D. Nervous and hormonal activities

Answer: A



Watch Video Solution

61. Match the following column I with column II and choose the correct combination.

Column I

Column II

(a) Earthworm (i) Gizzard

(b) Cockroach (ii) Caecum

(c) Frog (iii) Clitellum

(d) Rat (iv) Cloaca

A. (a) – (i), (b) – (ii), (c) – (iv), (d) – (iii)

B. (a) – (iii), (b), – (i), (c) – (iv), (d) – (ii)

C. (a) – (iii), (b) – (i), (c) – (ii), (d) – (iv)

D. (a) – (i), (b) – (iii), (c) – (iv), (d) – (ii)

Answer: B



Watch Video Solution

62. Fenestra ovalis in frog is the

A. Air-filled cavity of middle ear

B. Communication between pharynx and tympanic cavity

C. External opening of tympanic cavity covered by tympanic membrane

D. Opening of auditory capsule which separates middle ear from internal ear

Answer: D



Watch Video Solution

63. Main excretory organs in a frog are

A. Skin

B. Lungs

C. Kidneys

D. Malpighain tubules

Answer: C



Watch Video Solution

64. In frog, sclerotic is

- A. Bony
- B. Fibrous
- C. Cartilaginous
- D. None of these

Answer: B



Watch Video Solution

65. The ciliated funnels on the ventral side of the kidney in frog are called

- A. Ostia
- B. Nephrostomes
- C. Corpora adiposa
- D. Bidder's organ

Answer: B



Watch Video Solution

66. How do you differentiate a frog from a toad

- A. Frog has no exoskeleton but toad had scales
- B. Frog respire through lungs but toad respire through skin
- C. Frog has a tail but toad has not tail
- D. Frog has no parotid glands but toad has a pair of parotid glands

Answer: D



Watch Video Solution

67. In frog the urinar bladder is

- A. Absent
- B. Paired
- C. Bilobed
- D. None of these

Answer: C



Watch Video Solution

68. When an electric shock is given to the leg of a pithed frog it

- A. Blinks its eyes
- B. Shows no response
- C. Put out its tongue

D. None of these

Answer: D

 [Watch Video Solution](#)

69. Which of these is an ear ossicle in frog

A. Incus

B. Auricle

C. Malleus

D. Columella auris

Answer: D

 [Watch Video Solution](#)

70. Nitrogenous excretory product of tadpole of frog is

- A. Urea
- B. Guanine
- C. Uric acid
- D. Ammonia

Answer: D



Watch Video Solution

71. A frog has

- A. Eyes but not lids
- B. Jaws but no teeth
- C. Hands but not fingers

D. Ears but not pinnae

Answer: D

 [Watch Video Solution](#)

72. Which of the following is absent in frog

A. External ear

B. Middle ear

C. Internal ear

D. None of these

Answer: A

 [Watch Video Solution](#)

73. Which part of the brain of frog is called pallium

- A. Roof of paracoel
- B. Floor of epicoel
- C. Roof of rhinocoel
- D. Roof of metacoel

Answer: A



View Text Solution

74. Number of spinal nerves in frog is

- A. Ten only
- B. Ten pairs
- C. Twelve pairs

D. Twenty pairs

Answer: B

 [Watch Video Solution](#)

75. What will happen if the eyes of a frog are covered by paper

- A. Frog will soon die
- B. Frog will not move
- C. Frog will not do nay thing
- D. Frog will move to one side only

Answer: C

 [Watch Video Solution](#)

76. The second cranial nerve of frog is

- A. Optic
- B. Vagus
- C. Auditory
- D. Trochlear

Answer: A



Watch Video Solution

77. Eighth cranial nerves of frog connects the brain to

- A. Nose
- B. Ears
- C. Tongue

D. Pharynx

Answer: B



Watch Video Solution

78. Select the correct route for the passage of sperms in male frogs

A. Testes → Bidder's canal → Kidney → Vasa efferentia
→ Urinogenital duct → Cloaca

B. Testes → Vasa efferentia → Kidney → Seminal vesicle
→ Urinogenital duct → Cloaca

C. Testes → Vasa efferentia → Bidder's canal → Ureter
→ Cloaca

D. Testes → Vasa efferentia → Kidney → Bidder's canal
→ Urinogenital duct → Cloaca

Answer: D



Watch Video Solution

79. Frog's heart when taken out of the body continues to beat for sometime

Select the best option from the following statements

- (A) Frog is a poikilotherm
- (B) Frog does not have any coronary circulation
- (C) Heart is "Myogenic" in nature
- (D) Heart is autoexcitable

A. Only (C)

B. Only (D)

C. (A) and (B)

D. (C) and (D)

Answer: D



Watch Video Solution

80. The most important mammalian character of rat is

A. Hair

B. Pinna

C. Diaphragm

D. Mammary glands

Answer: D



Watch Video Solution

81. The second layer of epidermis in rate integument is

- A. Stratum lucidum
- B. Stratum germinativum
- C. Stratum corneum
- D. Startum granulosum

Answer: A



Watch Video Solution

82. In rat, testes lie in

- A. Scrotum
- B. Thoracic cavity

C. Abdominal cavity

D. Retroperitoneal position

Answer: A



Watch Video Solution

83. Rats are

A. Arboreal

B. Fossorial

C. Scansorial

D. None of these

Answer: B



Watch Video Solution

84. The common brown rat is

- A. *Rattus rattus*
- B. *Rattus melta*
- C. *Rattus norvegicus*
- D. *Bandicota bengalensis*

Answer: C



Watch Video Solution

85. The three parts of the limb of a rat from proximal to distal end are

- A. Autopodium, zeugopodium and stylopodium

B. Styopodium, zeugopodium and autopodium

C. Stylopodium, autopodium and zeugopodium

D. Zeugopodium, autopodium and stylopodium

Answer: B



Watch Video Solution

86. Accessory glands associated with the genital organs in female rate are

(i) Vestibular Bartholins (ii) Cowper's glands

(iii) Ampullary glands (iv) Vesicular gland

A. (i) and (ii)

B. (iii) and (ii)

C. (iv) only

D. (i) only

Answer:



Watch Video Solution

87. The chromosome number in *Rattus rattus* is

A. 40

B. 42

C. 44

D. 38

Answer: B



Watch Video Solution

88. How many nipples are present in a femal rat

- A. Two pairs
- B. One pairs
- C. Three pairs
- D. Six pairs

Answer: D



Watch Video Solution

89. The teeth of rat are

- A. Homodont, acrodont and diphyodont
- B. Heterodont, thecodont and diphyodont
- C. Heterodont, thecodont and polyphydonot

D. Heterodont, pleurodont and polyphyodont

Answer: B



Watch Video Solution

90. Which of the following teeth are absent in a rat

A. Canines and molars

B. Incisors and molars

C. Incisors and premolars

D. Canines and premolars

Answer: D



Watch Video Solution

91. The total number of teeth in a rat

A. 10

B. 16

C. 20

D. 28

Answer: B



Watch Video Solution

92. Which type of placenta is found in a rat

A. Epitheliochorial

B. Haemochorial

C. Haemoendothelial

D. Endotheliochorial

Answer: C



Watch Video Solution

93. A diastema is found in

A. Rat

B. Man

C. Both

D. None

Answer: A



Watch Video Solution

94. Premolars are absent in

A. Rat

B. Elephant

C. Both of these

D. None of these

Answer: C



Watch Video Solution

95. The life span of rat is about

A. Two years

B. Four years

C. Six years

D. Eight years

Answer: B



Watch Video Solution

96. Which of the following is present in a rat not in a frog

A. Ileum

B. Jejunum

C. Stomach

D. Duodenum

Answer: B



Watch Video Solution

97. Select the false statement

- A. In rats the teeth are heterodont and thecodont
- B. In female rats, the urinary and genital apertures are located above anus
- C. In female rats, six pairs of nipples are present on the ventral surface of the trunk
- D. In rats, 12 pairs of cranial nerves and 33 pairs of spinal nerves are present

Answer: B



Watch Video Solution

98. Which type of circulation is found in rat

- A. Ope and double
- B. Open and single
- C. Closed and single
- D. Closed and double

Answer: D



Watch Video Solution

99. Gestation period of rat is

- A. 20-22 days
- B. 28-32 days
- C. 52-65 days
- D. 60-65 days

Answer: A



Watch Video Solution

100. The site of fertilization in rat is

A. Vagina

B. Uterus

C. Vestibule

D. Fallopian tube

Answer: D



Watch Video Solution

101. How many meninges are present in rat

- A. Two
- B. Three
- C. Four
- D. Many

Answer: B



Watch Video Solution

102. Which aortic arch is present in a rat

- A. Left
- B. Right
- C. Both
- D. None

Answer: A



Watch Video Solution

103. Hepatic portal system collect blood from

- A. Liver
- B. Lungs
- C. Kidney
- D. Alimentary canal

Answer: D



Watch Video Solution

104. Which of the following is absent in a rat

A. Tonsils

B. Renal portal

C. Gall bladder

D. All of these

Answer: D



Watch Video Solution

105. The kidney in rat are

A. Holonephros

B. Pronephros

C. Mesonephros

D. Metanephros

Answer: D



Watch Video Solution

106. Where do you find Graafian follicles of a rat

A. Ovary

B. Brain

C. Kidney

D. Thyroid

Answer: A



Watch Video Solution

107. Rat is

A. Oviparous

B. Viviparous

C. Ovoviviparous

D. Parthenogenetic

Answer: B



Watch Video Solution

108. Frog has

A. 4 fingers in hand and 5 toes in foot

B. 5 fingers in hand and 5 toes in foot

C. 5 fingers in hand and 4 toes in foot

D. 6 fingers in hand and 5 toes in foot

Answer: A



Watch Video Solution

109. Layer of actively dividing cells in skin of frog is termed as stratum

- A. Malpighi
- B. Corneum
- C. Compactum
- D. Spongiosum

Answer: A



Watch Video Solution

110. When a frog is transferred from $20^{\circ}C$ to $30^{\circ}C$, its body temperature

- A. Falls to $15^{\circ}C$
- B. Rises to $30^{\circ}C$
- C. Falls to $12^{\circ}C$
- D. Remain unchanged

Answer: B



Watch Video Solution

111. Which of the following statement is true with reference to teeth in frog

- A. The lower jaw is toothless

- B. The upper jaw is toothless
- C. Both lower and upper jaws are toothless
- D. Both lower and upper jaws are toothed

Answer: A



Watch Video Solution

112. Which of the following part is not a part of the small intestine of frog

- A. Ileum
- B. Jejunum
- C. Duodenum
- D. None of these

Answer: B



Watch Video Solution

113. In frog, pancreas produces

- A. Two digestive enzymes, one hormone
- B. Three digestive enzymes, one hormone
- C. Three digestive enzymes, two hormones
- D. Three digestive enzymes, three hormones

Answer: B



Watch Video Solution

114. Stomach of frog does not have

- A. Fundic part
- B. Cardiac part
- C. Pyloric part
- D. All of these

Answer: A



Watch Video Solution

115. Contraction of sternohyal muscles during breathing in frog

- A. Closes glottis
- B. Opens the nostrils
- C. Raises floor of oral cavity
- D. Lowers floor of oral cavity

Answer: D



Watch Video Solution

116. Pylangium in frog is found in

- A. Atrium
- B. Ventricle
- C. Sinus venosus
- D. Conus arteriosus

Answer: D



Watch Video Solution

117. A spiral valve is present in

- A. Sinus venosus of frog's heart
- B. Right auricle of rabbit's heart
- C. Pylangium of the conus arteriosus of frog's heart
- D. Synangium of the conus arteriosus of frog's heart

Answer: C



Watch Video Solution

118. Three chambered heart of frog is not as efficient as fourchambered human heart because

- A. Heart muscles are not strong
- B. It does not hold enough blood
- C. Ventricle does not pump blood properly
- D. Oxygenated and deoxygenated blood mix up

Answer: D



Watch Video Solution

119. Velocity of conduction of nerve impulse in frog is

- A. Faster than sound
- B. 30 metre per second
- C. 300 metre per second
- D. None of these

Answer: D



Watch Video Solution

120. Which one of these are never present in frog's ovary

- A. Oogonia
- B. Corpus luteum
- C. Ovarian follicles
- D. Germinal epithelium

Answer: B



Watch Video Solution

121. There is no gall bladder in

- A. Rat
- B. Horse
- C. Whale
- D. All of these

Answer: D



Watch Video Solution

122. The clitellium is a distinct part in the body of earthworm, it is found in

- A. Segments 13 - 14 - 15
- B. Segments 14 - 15 - 16
- C. Segments 12 - 13 - 14
- D. Segments 15 - 16 - 17

Answer: B



Watch Video Solution

123. Setae help in locomotion in earthworm but not uniformly present in all the segments. Select among the following that represents setae

- A. 1st segment
- B. Last segment
- C. Clitellar segment
- D. 20th – 22nd segment

Answer: D

 [Watch Video Solution](#)

124. During breeding season, nuptial pad is found in the thumb of

- A. Male frog
- B. Female frog
- C. Both of these
- D. None of these

Answer: A



Watch Video Solution

125. The glands present in the skin of frog are

- A. Sweat and mucous
- B. Sweat and mammary
- C. Mucous and poisonous
- D. Sweat and sebaceous

Answer: C



Watch Video Solution

126. The structure present in man but absent in frog is

- A. Pancreas
- B. Thyroid gland
- C. Adrenal gland
- D. Salivary gland

Answer: D



Watch Video Solution

127. The epithelial lining of the alveoli of frog's lungs facing lung cavity is

- A. Columnar and ciliated
- B. Squamous and ciliated
- C. Squamous and nonciliated
- D. Columnar and nonciliated

Answer: A



Watch Video Solution

128. RBCs of rat are

- A. Small, round, nonnucleated and biconcave
- B. Small, round, nonnucleated and biconvex

C. Small, oval, nonnucleated and biconcave

D. Small, round, nucleated and biconcave

Answer: A



Watch Video Solution

129. The jaws, eye orbits and nasal chambers in frog are supplied by

A. Occipital arteries

B. Vertebral arteries

C. External carotid arteries

D. Internal carotid arteries

Answer: A



130. Which one is the correct statement in regard to frog

- A. Fertilization occurs in uteri
- B. Ova from ovary are shed into infundibuli, pass through oviducts and stored in uteri
- C. Testes develop inside kidney, so that sperms are able to reach the urinogential ducts
- D. Male and female frogs are similar but gonads appear at the time of reproduction

Answer: B

131. Anterior abdominal vein in frog is formed by union of

- A. Right and left pelvic veins
- B. Right and left sciatic veins
- C. Right and left femoral veins
- D. Right and left dorsolumbar veins

Answer: A



Watch Video Solution

132. Which of the following is true of hibernating gland in rat

- A. It is gland formed during hibernation
- B. It secretes digestive enzymes to metabolise fat

C. Its secretion regulates the body temperature during winter sleep

D. It is not a gland at all, but a multicellular adipose tissue

Answer: D



Watch Video Solution

133. Glands of Swammerdam are related with

A. Spinal nerves of frog

B. Cranial nerves of frog

C. Endocrine system of frog

D. Alimentary canal of frog

Answer: A

 [Watch Video Solution](#)

134. Bidder's canal is meant for passage of

- A. Ova
- B. Urine
- C. Sperms
- D. All of these

Answer: C

 [Watch Video Solution](#)