



BIOLOGY

BOOKS - UNIVERSAL BOOK DEPOT 1960 BIOLOGY (HINGLISH)

PROTISTA

Protista

1. Nutrition in protists is

- A. Holophytic
- B. Holozoic
- C. Saprozoic
- D. All of these

Answer: D



[Watch Video Solution](#)

2. Which of the following is a slime mould

- A. Rhizopus
- B. Physarum
- C. Thiobacillus
- D. Anabaena

Answer: B



[Watch Video Solution](#)

3. The thalloid body of a slime mould (Myxomycetes) is known as

- A. Fruiting body
- B. Mycelium
- C. Protonema

D. Plasmodium

Answer: D



Watch Video Solution

4. Which of the following are the characters of dinoflagellates

A. Planktonic golden yellow alage with soap box like structure

B. Marine red biflagellated protista

C. Appear yellow, green, brown, blue and red in colour

D. Biflagellated organisms with pellicle

E. Saprophytic (or) parasitic unicellular forms

A. A, B and C only

B. B, D and E only

C. C, D and E only

D. B and E only

Answer: C



[Watch Video Solution](#)

5. Planktons are organisms which

- A. Float on water surface
- B. Are free swimmers
- C. Are deep sea forms
- D. Are burrowing forms

Answer: A



[Watch Video Solution](#)

6. If phytoplanktons are destroyed in the sea, then

- A. No effect will be seen
- B. Primary consumers will grow luxuriently
- C. It will affect the food chain

D. Algae will get more space to grow

Answer: C



Watch Video Solution

7. Which one of the following is a saprophytic protist

A. Desmid

B. Slime mould

C. Euglena

D. Gonyaulax

Answer: B



Watch Video Solution

8. Slime moulds in the division Myxomycota (true slime moulds) have

- A. Pseudoplasmodia
- B. Spores that develop into free living amoeboid cells
- C. Spores that develop into flagellated gametes
- D. Feeding stages consisting of solitary individual cells

Answer: C

 [Watch Video Solution](#)

9. Auxospores and hormocysts are formed respectively by

- A. Some cyanobacteria and many diatoms
- B. Several cyanobacteria and several diatoms
- C. Some diatoms and several cyanobacteria
- D. Several diatoms and a few cyanobacteria

Answer: D

 [Watch Video Solution](#)

10. Flagellum of Astasia/Euglena is

- A. Pantonematic
- B. Acronematic
- C. Pantachronematic
- D. Stichonematic

Answer: D



[Watch Video Solution](#)

11. The slime moulds are characterized by the presence of

- A. Elaters
- B. Pseudoelaters
- C. Capillitium

D. Capitulum

Answer: C



Watch Video Solution

12. Diatoms are

A. Fungi

B. Planate

C. Protista

D. Protozoans

Answer: C



Watch Video Solution

13. Red oceanic tides can be due to

A. Diatoms

B. Dinophyceae

C. Red algae

D. Blue-green algae

Answer: B



[Watch Video Solution](#)

14. Murein is not found in the cell wall of

A. Nostoc

B. Eubacteria

C. Cyanobacteria

D. Diatoms

Answer: D



[Watch Video Solution](#)

15. Slime moulds belong to

- A. Fungi
- B. Protista
- C. Monera
- D. Plantae

Answer: B



Watch Video Solution

16. Spore producing body of a cellular slime mould is

- A. Pseudoplasmodium
- B. Plasmodium
- C. Sporangium

D. Sporophore

Answer: C



Watch Video Solution

17. Transverse groove present in dinoflagellates is

A. Sulcus

B. Cingulum

C. Annulus

D. Both (B) and (c)

Answer: D



Watch Video Solution

18. Protistan genome has

- A. Membrane bound nucleoproteins embedded in cytoplasm
- B. Free nucleic acid aggregates
- C. Gene containing nucleoproteins condensed together in loose mass
- D. Nucleoprotein in direct contact with cell substance

Answer: A

 [Watch Video Solution](#)

19. Which protist reproduces both by binary fission and conjugation

- A. Amoeba
- B. Paramecium
- C. Euglena
- D. Monocystis

Answer: B

 [Watch Video Solution](#)

20. Protists obtain food as

- A. Photosynthesisers, symbionts and holotrophs
- B. Photosynthesisers
- C. Chemosynthesisers
- D. Holotrophs

Answer: A



[Watch Video Solution](#)

21. Which one is not protozoan protist

- A. Plasmodium vivax
- B. Paramecium caudatum
- C. Enterobius vermicularis

D. *Trypanosoma gambiense*

Answer: C



Watch Video Solution

22. Which of the following animals is having longitudinal binary fission

A. *Euglena*

B. *Plasmodium*

C. *Planaria*

D. *Paramecium*

Answer: A



Watch Video Solution

23. *Euglena* is

- A. Ciliate
- B. Sporozoan
- C. Flagellate
- D. Sarcodine

Answer: C

 [Watch Video Solution](#)

24. Protozoans are able to live efficiently due to their

- A. Motility
- B. Rapid reproduction
- C. Ability to manufacture food
- D. Specialised organelles

Answer: D

 [Watch Video Solution](#)

25. Characteristics spores of diatoms are

- A. Ascospores
- B. Basidiospores
- C. Auxospores
- D. Zoospores

Answer: C



Watch Video Solution

26. Unlike other algae, diatoms do not readily decay due to

- A. Siliceous wall
- B. Mucilaginous wall
- C. Water proof cell wall

D. Nonliving cells

Answer: A



Watch Video Solution

27. Which one of the following can photosynthesise its food

A. Hydra

B. Paramecium

C. Monocystis

D. Euglena

Answer: D



Watch Video Solution

28. Sexual reproduction in protists with diploid chromosomes involves

- A. Cyst formation
- B. Zygotic meiosis
- C. Gametangial meiosis
- D. Binary fission

Answer: C

 [Watch Video Solution](#)

29. Diatom frustule/shell is made of

- A. Silica
- B. Lime
- C. Magnesium carbonate
- D. Calcium

Answer: A

 [Watch Video Solution](#)

30. Which one of the following is a unicellular, nonmotile desmid

- A. Chlorobium
- B. Clostridium
- C. Chromatium
- D. Cosmarium

Answer: D



Watch Video Solution

31. Protists contains

- A. Euglena, Dinoflagellates and Yeast
- B. Amoeba, Paramecium, Hydra
- C. Euglena, Paramecium, Mushroom

D. Amoeba, Paramecium and Dinoflagellates

Answer: D



[Watch Video Solution](#)

32. Ceratium is

A. Dinoflagellate

B. Diatom

C. Slime mould

D. Sporozoan

Answer: A



[Watch Video Solution](#)

33. The class of phylum protozoa to which 'Noctiluca' belongs is

A. Rhizopoda

B. Sporozoa

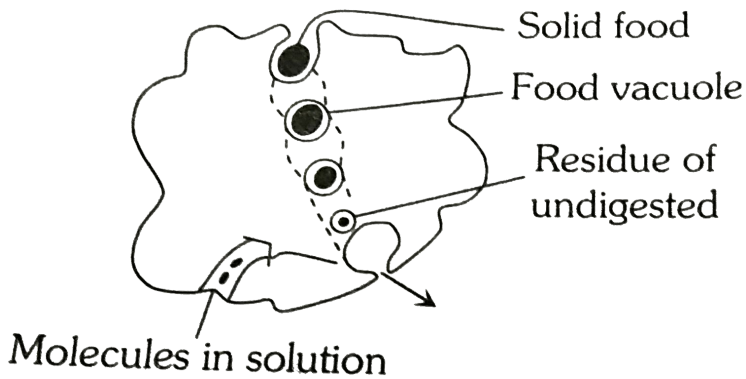
C. Mastigophora

D. Ciliata

Answer: C

 [Watch Video Solution](#)

34. In the diagram, which of the following processes are shown in Amoeba



A. Exocytosis

B. Phagocytosis

C. Pinocytosis

D. All of these

Answer: B



[Watch Video Solution](#)

35. Slimy mass of protoplasm with many nuclei and an Amoeba like thalloid body is a characteristic feature of

A. Ascomycetes

B. Actinomycetes

C. Phycomycetes

D. Myxomycetes

Answer: D



[Watch Video Solution](#)

36. The class of Trichonympha is

- A. Calcaria
- B. Scyphozoa
- C. Sporozoa
- D. Mastigophora

Answer: D



[Watch Video Solution](#)

37. The infection of Entamoeba histolytica takes place by

- A. Trophozoite
- B. Binucleated cyst
- C. Trinucleated cyst
- D. Quadrinucleated cyst

Answer:



Watch Video Solution

38. Paramecium is a

- A. Protozoan
- B. Bacterium
- C. Virus
- D. Annelid

Answer: A



Watch Video Solution

39. Which is not locomotory organ of protozoa

- A. Cilia

B. Flagella

C. Pseudopodia

D. Parapodia

Answer: D



Watch Video Solution

40. Monocystics belong to the order

A. Gregarinida

B. Coccidia

C. Microsporidia

D. Sarcosporidia

Answer: A



View Text Solution

41. Which protozoan is unlikely to have a contractile vacuole

- A. Euglena
- B. Paramecium
- C. Ameoba
- D. Plasmodium

Answer: D



Watch Video Solution

42. *Entamoeba histolytica* is a human parasite usually found in

- A. Liver
- B. Lung
- C. Mouth
- D. Intestine

Answer: D



Watch Video Solution

43. The protozoan parasite which possesses a food vacuole is

A. Leptomonas Plasmodium

B. Plasmodium

C. Trypanosome

D. Leishmania

Answer: B



Watch Video Solution

44. Which one of the following pairs is correctly matched

A. Aedes-plague

B. Anopheles-malaria

C. House fly-yellow fever

D. Body louse-typhoid

Answer: B



[Watch Video Solution](#)

45. Total parasites belong to protozoan group

A. Sporozoa

B. Ciliata

C. Sarcodina

D. Zooflagellata

Answer: A



[Watch Video Solution](#)

46. Which of the following classes of protozoa is exclusively endoparasite

A. Mastigophora

B. Sarcodina

C. Opalinata

D. Sporozoa

Answer: D



Watch Video Solution

47. Match the following and choose the correct combination from the options given

Column I (Group Protista)

Column II(Example)

A. Chrysophytes

i. Paramecium

B. Dinoflagellates

ii. Euglena

C. Euglenoids

iii. Gonyaulax

D. Protozoans

iv. Diatoms

A. A-i, B-iii, C-ii, D-iv

B. A-ii, B-iv, C-iii, D-i

C. A-iii, B-iv, C-I, D-ii

D. A-iv, B-iii, C-ii, D-i

Answer: D



Watch Video Solution

48. Which is not true for Paramecium

A. Under unfavourable conditions, forms cysts

B. Presence of large number of cilia on whole body surface

C. Contain contractile vacuoles for osmoregulation

D. Use pseudopodia for capturing prey

Answer: D



Watch Video Solution

49. Which of the following combinations of characters is true for slime moulds?

- A. Parasite, Plasmodium without walls, spores dispersed by air currents
- B. Saprophytic, Plasmodium without walls, spores dispersed by water
- C. Parasitic, Plasmodium without walls, spores dispersed by water
- D. Saprophytic, Plasmodium without walls, spores dispersed by air currents

Answer: D



[Watch Video Solution](#)

50. Slipper animalcule is

- A. Paramecium
- B. Trypanosoma
- C. Entamoeba

D. Protozoa

Answer: A



[Watch Video Solution](#)

51. In life cycle of Plasmodium, exflagellation is seen in

A. Microgametocytes

B. Trophozoites

C. Macrogametocytes

D. Merozoites

Answer: A



[Watch Video Solution](#)

52. Man in the life cycle of Plasmodium is

- A. Primary host
- B. Secondary host
- C. Intermediate host
- D. None of these

Answer: A

 [Watch Video Solution](#)

53. Which of the following unicellular organism has a macronucleus for trophic function and one or more micronuclei for reproduction

- A. Euglena
- B. Amoeba
- C. Paramecium
- D. Trypanosoma

Answer: C

 [Watch Video Solution](#)

54. Pseudopodia is a characteristic feature of which class

- A. Mastigophora
- B. Sarcodina
- C. Sporozoa
- D. Ciliata

Answer: B

 [Watch Video Solution](#)

55. Animals of class ciliata

- A. Have two nuclei
- B. Are autotrophs
- C. reproduce sexually

D. Possess cilia

Answer: A



Watch Video Solution

56. Excretion in Amoeba occurs through

A. Nucleus

B. Parapodia

C. Plasmlemma

D. Contractile vacuole

Answer: C



Watch Video Solution

57. The reason of pseudopodium formation is

- A. Chemical changes
- B. Difference in the viscosity
- C. Difference in the pressure
- D. Change in the temperature

Answer: B

 [Watch Video Solution](#)

58. Who discovered malaria parasite

- A. Sir Ronald Ross
- B. Charles Laveran
- C. Patrick Manson
- D. Grassi

Answer: B

 [Watch Video Solution](#)

59. Sporogony of malarial parasite occurs in

- A. Liver of man
- B. RBCs of man
- C. Stomach wall of mosquito
- D. Salivary glands of mosquito

Answer: C



Watch Video Solution

60. which of the following is not true nutrition in Amoeba

- A. Photoheterotrophic
- B. Phagocytosis
- C. Intracellular

D. Holozoic

Answer: A



Watch Video Solution

61. Which is filter feeder

A. Amoeba

B. Leech

C. Spider

D. Paramecium

Answer: D



View Text Solution

62. Sexual mode of reproduction in protozoa is

A. Anisogamy

B. Plasmotomy

C. Autogamy

D. Schizogony

Answer: A



[Watch Video Solution](#)

63. Paramoecium exhibits cytoplasmic inheritance through

A. Chromosome

B. Nuclear gene

C. Kappa particles

D. DNA

Answer: C



[Watch Video Solution](#)

64. Class sporozoa of phylum protozoa is characterised by

- A. Flagella
- B. Cilia
- C. Parasitism
- D. None of these

Answer: C



Watch Video Solution

65. Primary grouping of protozoan protists is based on

- A. Locomotor organelles
- B. Size and shape
- C. Mode of feeding

D. Mode of reproduction

Answer: A



Watch Video Solution

66. Amoeba was described in detail

A. Ronald Ross

B. Aristotle

C. Hirshfield

D. Rossenhoff

Answer: C



View Text Solution

67. Conjugation in protozoa is found in

A. Sarcodina

B. Flagellata

C. Sporozoa

D. Ciliata

Answer: D



Watch Video Solution

68. Which one of the following represents class Mastigophora

A. Monocystis

B. Paramecium

C. Trypanosome

D. Amoeba

Answer: C



Watch Video Solution

69. Maurer's dots occurs in human RBCs infected by

- A. Plasmodium falciparum
- B. Plasmodium ovale
- C. Plasmodium vivax
- D. Plasmodium malariae

Answer: A



[View Text Solution](#)

70. Which one show bioluminescence

- A. Noctiluca
- B. Polysytmella
- C. Entamoeba

D. Suctoria

Answer: A



[Watch Video Solution](#)

71. Protists are

1. Unicellular and prokaryote
2. Unicellular and eukaryote
3. Multicellular and eukaryote
4. Autotroph and heterotroph

A. 1+2+3

B. 2+3+4

C. 3+4

D. 2+4

Answer: D



[Watch Video Solution](#)

72. Locomotory organ of sporozoa is

- A. Tentacles
- B. Reticulocytes
- C. Legs
- D. None of the above

Answer: D



[Watch Video Solution](#)

73. Paramecium ingests food through

- A. Cytoproct
- B. Cytopyge
- C. Cytopharynx

D. Cytostome

Answer: D



Watch Video Solution

74. When a fresh-water protozoan possessing a contractile vacuole, is placed in a glass containing marine water, the vacuole will

- A. Increase in size
- B. Decrease in size
- C. Increase in number
- D. Disappear

Answer: D



Watch Video Solution

75. Which is false for nutrition in Amoeba

- A. Omnivorous
- B. Pseudopodia feeder
- C. Holozoic nutrition
- D. Photoautotroph

Answer: D



[Watch Video Solution](#)

76. Which is not related with the sexual reproduction in protozoans

- A. Cytogamy
- B. Autogamy
- C. Conjugation
- D. Schizogony

Answer: D



Watch Video Solution

77. All protozoans have

- A. Pseudopodia
- B. Eukaryotic organisation
- C. Contractile vacuole
- D. Holozonic nutrition

Answer: B



Watch Video Solution

78.is not true Euglena

- A. Presence of Chl.-'a' and 'b'

B. Presence of protoplasmic capsule

C. Presence of cellulose cell wall

D. Presence of proteinaceous pellicle

Answer: C



Watch Video Solution

79. A metazoa without tissue organisation is called

A. Parazoa

B. Protozoa

C. Eumetazoa

D. Dermatozoa

Answer: A



View Text Solution

80. Passive food ingestion in Amoeba is known as

- A. Import
- B. Invagination
- C. Circumfluence
- D. Circumvallation

Answer: A



[Watch Video Solution](#)

81. Reproduction in Paramecium is controlled by

- A. Flagella
- B. Micronucleus
- C. Macronucleus
- D. Cell wall

Answer: B



Watch Video Solution

82. Trichonympha is a symbiont in alimentary canal of

- A. Earthworm
- B. Snails
- C. Hermit Crab
- D. Termite

Answer: D



Watch Video Solution

83. In which of the following binary fission is not seen

- A. Plasmodium

B. Amoeba

C. Euglena

D. Paramecium

Answer: A



Watch Video Solution

84. Amoeba is a member of Phylum

A. Porifera

B. Protozoa

C. Annelida

D. Mollusca

Answer: B



Watch Video Solution

85. which of the followinf is a flagellated protozoan

- A. Amoeba
- B. Entamoeba
- C. Plasmodium
- D. Trypanosomes

Answer: D



Watch Video Solution

86. Mammalian kindly resemble contractile vacuole of Amoeba in excretion of

- A. Glucose
- B. Excess water
- C. Urea
- D. Ammonia

Answer: B



[Watch Video Solution](#)

87. In Paramecium, both autogamy and Conjugation are sexual processes because of

- A. Gene recombination
- B. Involvement of two individuals
- C. Fusion of two haploid nuclei
- D. Rejuvenation

Answer: C



[Watch Video Solution](#)

88. All stages of Plasmodium are digested in stomach of female Anopheles except

A. Sporozoites

B. Gametocytes

C. Erythrocytes

D. Merozoites

Answer: B



View Text Solution

89. Which one of the following genus of insects prefer to breed in clean water and their larvae lie parallel to the surface of water

A. Anopheles

B. Culex

C. Aedes

D. Phlebotomus

Answer: A

 [Watch Video Solution](#)

90. The stage of *Entamoeba histolytica* that causes intestinal ulceration is

- A. Trophozoite
- B. Metacystic trophozoite
- C. Binucleate stage
- D. Tetranucleate stage

Answer: A

 [Watch Video Solution](#)

91. If a pond dries, *Amoeba*

- A. Reproduces
- B. Encysts
- C. Degenerates

D. Behaviour is uncertain

Answer: B



[Watch Video Solution](#)

92. Which of the following is not correct with respect to malaria

- A. RBC's rupture and release haemozoin which causes chills
- B. Sporozoites multiply in blood
- C. Female anopheles mosquito is the vector
- D. Malignant malaria is caused by Plasmodium falciparum

Answer: B



[Watch Video Solution](#)

93. The active form of Entamoeba-histolytica feeds upon

- A. Mucosa and submucosa of colon only
- B. Food in intestine
- C. Blood only
- D. Erythrocytes, mucosa and submucosa of colon

Answer: D

 [Watch Video Solution](#)

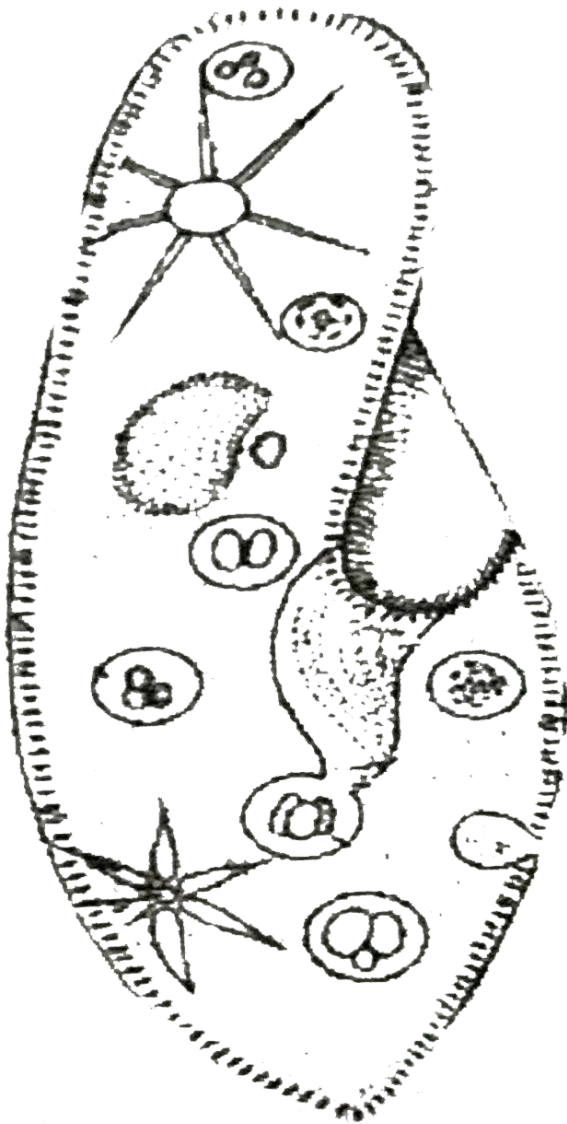
94. Microphagial nutrition occurs in

- A. Amphioxus
- B. Insects
- C. Paramecium
- D. Hydra

Answer: C

 [Watch Video Solution](#)

95. Which structure is formed at the time of exchange of gamete nuclei in given animal during sexual reproduction



- A. Plasmodesmata
- B. Cytoplasmic filaments
- C. Internal tube
- D. Cytoplasmic bridge

Answer: D

 [Watch Video Solution](#)

96. Entamoeba differs from Amoeba is not having

- A. Nucleus
- B. Pseudopodia
- C. Ectoplasm
- D. Contractile vacuole

Answer: D

 [Watch Video Solution](#)

97. The cilia in Paramecium are

- A. All equal
- B. All unequal
- C. Longer at posterior end
- D. Longer at anterior end

Answer: C



Watch Video Solution

98. Sprinkling oil over ponds would control malaria because

- A. Fishes die
- B. Water gets polluted
- C. Larvae are asphyxiated

D. Mosquitoes are repelled

Answer: C



Watch Video Solution

99. Which of the following is not a character of protista

- A. Protists are prokaryotic
- B. Some protists have cell walls
- C. Mode of nutrition is both autotrophic and heterotrophic
- D. Body organization is cellular

Answer: A



Watch Video Solution

100. Transverse binary fission occurs in

A. Euglena

B. Amoeba

C. Hydra

D. Paramecium

Answer: D



[Watch Video Solution](#)

101. Living Amoeba is

A. Pale blue

B. Transparent

C. Light green

D. Transluscent

Answer: D



[Watch Video Solution](#)

102. Discovery of Amoeba was made by

- A. Jenner
- B. Rossenhoff
- C. Hofkins
- D. Twait

Answer: B



[View Text Solution](#)

103. Chrysoytes, Euglenoids, Dinoflaegellates and Slime moulds are included in the kingdom

- A. Monera
- B. Protista
- C. Fungi

D. Animalia

Answer: B



Watch Video Solution

104. Paramecium moves about by

A. Pseudopodia

B. Cilia

C. Flagella

D. Looping and crawling

Answer: B



Watch Video Solution

105. In which group of organisms the cell walls form two thin overlapping shells which fit together

- A. Euglenoids
- B. Dinoflagellates
- C. Slime moulds
- D. Chrysopytes

Answer: D



[Watch Video Solution](#)

106. Locomotory structures of Amoeba are

- A. Cilia
- B. Flagella
- C. Pseudopodia
- D. None of the above

Answer: C



[Watch Video Solution](#)

107. Mode of nutrition in Trypanosoma is

- A. Saprozoic
- B. Parasitic
- C. Autotropic
- D. Phototropic

Answer: B



[Watch Video Solution](#)

108. Quartan malaria is due to

Your patient shows paroxysms of malaria after every 72 hours. Which

species of plasodium will be considered responsible to cause the infection

A. Plasmodium falciparum

B. P.vivax

C. P.ovale

D. P.malariae

Answer: D



Watch Video Solution

109. Malignant tertian malaria is due to

Or

Cerebral malaria is due to

A. Plasmodium falciparum

B. P.vivax

C. P.ovale

D. P. malariae

Answer: A



[Watch Video Solution](#)

110. Male mosquito (Anopheles) does not transmit malarial parasite because

- A. It lacks blood sucking mouth parts
- B. It catches fever
- C. It is too small to carry parasite
- D. The parasite is killed in its stomach

Answer: A



[Watch Video Solution](#)

111. Highest incubation period occurs in Plasmodium

- A. P.malariae
- B. P.vivax
- C. P.ovale
- D. P. falciparum

Answer: A



[Watch Video Solution](#)

112. Entamoeba histolytica infection occurs through

- A. Contaminated water and food
- B. Sweat
- C. Birds droppings
- D. Mosquito bites

Answer: A



[Watch Video Solution](#)

113. Malarial parasite is

- A. Polygenetic
- B. Digenic
- C. Monogenetic
- D. Monomorphic

Answer: B



[Watch Video Solution](#)

114. Type of pseudopodia present in Amoeba proteus is

- A. Lobopodia

B. Axopodia

C. Filopodia

D. Exopodia

Answer: A



[Watch Video Solution](#)

115. Erythrocytic phase of *Plasmodium vivax* is completed in

A. 24 hours

B. 72 hours

C. 36 hours

D. 48 hours

Answer: D



[Watch Video Solution](#)

116. Schuffer's dots observed in erythrocytes are due to

- A. Filaria
- B. Malaria
- C. Kala-azar
- D. Giardia

Answer: B



[Watch Video Solution](#)

117. The part of life cycle of maarial parasite Plasmodium vivax, that is passed in female Anopheles is

- A. Sexual cycle
- B. Pre-erythrocytic schizogony
- C. Exoerythrocytic schizogony
- D. Post-erythrocytic schizogony

Answer: A



Watch Video Solution

118. Erythrocytic cycle of Plasmodium occurs in

- A. Liver
- B. Spleen
- C. RBC
- D. Gut

Answer: C



Watch Video Solution

119. Which one is correct pairing

- A. Hydra-Anthozoa

B. Paramecium-Arachnida

C. Plasmodium-Sporozoa

D. Amoeba-Ciliata

Answer: C



Watch Video Solution

120. Presence of two types of nuclei, micronucleus and macronucleus, is characteristic of protistan group

A. Sporozoa

B. Ciliata

C. Flagellata

D. Sarcodina

Answer: B



Watch Video Solution

121. Which one resides in the mouth of human beings

- A. Entamoeba coli
- B. Entamoeba histolytica
- C. Entamoeba gingivalis
- D. Amoeba proteus

Answer: C



[Watch Video Solution](#)

122. Which one does not spread disease

- A. Entamoeba coli
- B. Entamoeba histolytica
- C. E. gingivalis
- D. Plasmodium ovale

Answer: A



[Watch Video Solution](#)

123. Which one is monogenetic parasite

A. Plasmodium

B. Liver Fluke

C. Taenia solium

D. Entamoeba histolytica

Answer: D



[Watch Video Solution](#)

124. Amoeba touched with needle will

A. Die

B. Divide quickly

C. Develop pseudopodia

D. Move away

Answer: D



[Watch Video Solution](#)

125. Inactive stage of *Trypanosoma gambiense* is

A. Metacyclic

B. Crithidial

C. Leptomonas

D. Leishmania

Answer: A



[Watch Video Solution](#)

126. Which does not occur in sporozoa

- A. Cilia
- B. Pseudopodia
- C. Flagella
- D. None of the above

Answer: D



Watch Video Solution

127. In malaria, which causes chills and fever

Or

Metabolic waste responsible for malaria fever is called

Or

The poisonous substance released as a result of rupturing of schizont in RBC of malaria patient is

- A. Hematinj
- B. Haemozoin
- C. Schuffner's granules
- D. Hematocrit

Answer: B

 [Watch Video Solution](#)

128. Development and functioning of gametocytes of Plasmodium in the body of Mosquito are dependent upon

- A. Temperature
- B. Food in intestine
- C. Position
- D. All the above

Answer: A



[Watch Video Solution](#)

129. Who was awarded Nobel Prize in 1902 for discovery of oocyst of Plasmodium

Or

Who discovered oocysts in the stomach of female Anopheles

Or

Malaria is transmitted by "Anopheles". This was discovered by

- A. Golgi
- B. Ronald Ross
- C. Laveran
- D. Shortt

Answer: B



[Watch Video Solution](#)

130. Which is spindle-shaped mobile with microtubules

- A. Sporont
- B. Ookinete
- C. Cryptozoite
- D. Sporozoite

Answer: D



[Watch Video Solution](#)

131. Infection of *Entamoeba histolytica* is prevented by

- A. Avoiding kissing
- B. Avoiding clothes of patient
- C. Uncontaminated food
- D. None of the above

Answer: C



Watch Video Solution

132. Trichocyst takes part in

- A. Defence
- B. Reproduction
- C. Nutrition
- D. Osmoregulation

Answer: A



Watch Video Solution

133. Cyst wall of Euglena is formed of

- A. Silica

B. Carbohydrate

C. Proteins

D. Calcium

Answer: B



[Watch Video Solution](#)

134. Posterior end of Amoeba is characterised by

A. Plasmid

B. Amphid

C. Uripygium

D. Lack of food vacuoles

Answer: D



[Watch Video Solution](#)

135. Multiple fission in Plasmodium is

- A. Gamogamy
- B. Schizogony
- C. Sporulation
- D. None of these

Answer: B



[Watch Video Solution](#)

136. Development of gametocyte from merozoite of Plasmodium occurs in

- A. Red blood corpuscles
- B. Liver cells
- C. Stomach of female Anopheles
- D. All of the above

Answer: A



Watch Video Solution

137. A cyst of *Entamoeba histolytica* produces trophozoites

A. 1

B. 2

C. 4

D. 18

Answer: C



Watch Video Solution

138. Which one is not a symptom of *Entamoeba histolytica* infection

A. Relapsing fever

B. Abdomial pain

C. Blood in stool

D. Irregular bowels

Answer: A



Watch Video Solution

139. Malarial species found in South America and West Africa is

A. Plasmodium falciparum

B. P.vivax

C. P.malariae

D. P.ovale

Answer: D



Watch Video Solution

140. Recurrence of high temperature in malaria at intervals is due to completion of

- A. Erythrocytic schizogony
- B. Sporogony
- C. Gamogony
- D. Exoerythrocytic schizogony

Answer: A



[Watch Video Solution](#)

141. Symptoms of malaria in spleen and skin are due to

- A. Schffner's granules
- B. Haemozoin
- C. Hamaton
- D. Blood sugar

Answer: B



Watch Video Solution

142. *Entamoeba histolytica* excretes through

- A. Food vacuole
- B. General surface
- C. Contractile vacuole
- D. Malpighian tubes.

Answer: B



Watch Video Solution

143. What is common about *Trypanosoma*, *Noctiluca*, *Monocystis* and *Giardia*

- A. They produce spores
- B. These are all parasites
- C. These are all unicellular protists
- D. They have flagella

Answer: C

 [Watch Video Solution](#)

144. Which one of the following is a characteristic feature of Chrysophytes

- A. They are parasite forms which cause disease in animals
- B. They have a proteins rich layer called pellicle
- C. They have indestructible wall layer deposited with silica
- D. They are commonly called dinoflagellates

Answer: C

 [Watch Video Solution](#)

145. Infective slage of *Entamoeba histolytica* is

- A. Trophozoite
- B. Pre-cyst
- C. Uninucleate cyst
- D. Tetranucleate cyst

Answer: D

 [Watch Video Solution](#)

146. Sandfly is causative agent of

- A. Kala-azar
- B. Sleeping sickness
- C. Typhoid

D. Dysentery

Answer: A



[Watch Video Solution](#)

147. *Leishmania tropica* produces

A. Sleeping sickness

B. Kala-azar

C. Dysentery

D. Oriental sores

Answer: D



[Watch Video Solution](#)

148. *Trypanosoma brucei* produces

- A. Sleeping sickness
- B. Kala-azar
- C. Dysentery
- D. A disease of animals

Answer: A

 [Watch Video Solution](#)

149. Which of the following does not belong to the kingdom Protista

- A. Chrysophytes
- B. Euglenoids
- C. Ascomycetes
- D. Dinoflagellates

Answer: C

 [Watch Video Solution](#)

150. Protozoan found commensal in human colon is

- A. Entamoeba coli
- B. P.vivax
- C. A. aegypti
- D. All the above

Answer: A



[Watch Video Solution](#)

151. Symptoms of paroxysms in malaria are due to

- A. Sporozoites
- B. Gametocyte
- C. Pre-erythrocytic cycle

D. Erythrocytic cycle

Answer: D



[Watch Video Solution](#)

152. Relapsing malaria is due to

A. Plasmodium falciparum and P. vivax

B. Plasmodium ovale and P. vivax

C. Plasmodium falciparum and P. ovale

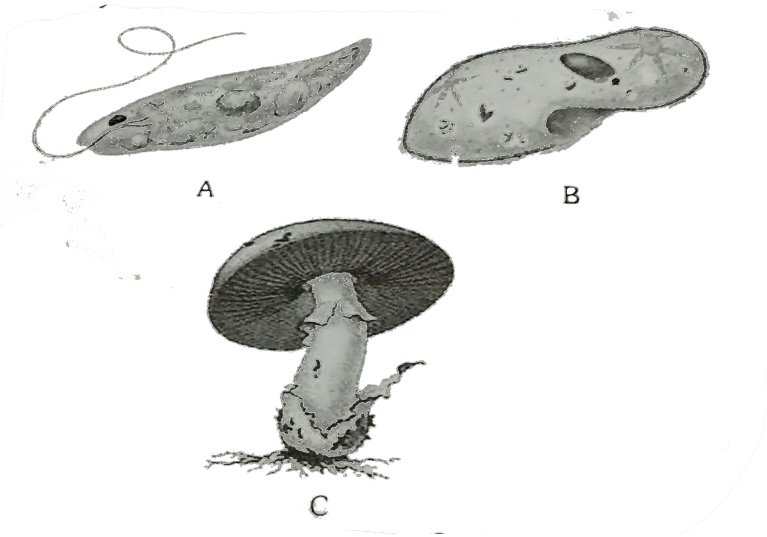
D. P. falciparum only

Answer: B



[Watch Video Solution](#)

153. Study the following figures and identify A, B and C



A. A-Euglena, B-Paramecium, C_Aspergillus

B. A- Planaria, B- Paramecium, C- Agaricus

C. A- Euglena, B-Planaria, C-Agaricus

D. A - Euglena, B - Paramecium, C-Agaricus

Answer: D

 [Watch Video Solution](#)

154. Signet ring stage of Plasmodium represents

- A. Beginning of schizogony in liver cells
- B. End of schizogony in RBC
- C. Beginning of schizogony in RBC
- D. Beginning of sporogony in humans

Answer: C



[View Text Solution](#)

155. Amoeba is eukaryotic because it possesses

- A. Plasmid
- B. Nucleus
- C. Plasmalemma
- D. DNA

Answer: B



View Text Solution

156. Incubation period of Plasmodium vivax is

- A. 14 days
- B. 20 days
- C. 30 days
- D. 45 days

Answer: A



View Text Solution

157. In Amoeba, contractile vacuole is present

- A. Near trailing end

- B. Near advancing end
- C. At the middle of body
- D. Any where inside body

Answer: A



[View Text Solution](#)

158. Select the wrong statement

- A. Diatoms are microscopic and float passively in water
- B. The walls of diatoms are easily destructible
- C. Diatomaceous earth's is formed by the cell walls of diatoms
- D. Diatoms are chief producers in the oceans

Answer: B



[Watch Video Solution](#)

159. Ciliates differ from all other protozoans in

- A. Using flagella for locomotion
- B. Having a contractile vacuole for removing excess water
- C. Using pseudopodia for capturing prey
- D. Having two types a nuclei

Answer: D



Watch Video Solution

160. The major function of contractile vacuole is

- A. Excretion
- B. Circulation
- C. Osmoregulation
- D. All the above

Answer: C



[Watch Video Solution](#)

161. Centric discoid form of diatom is

- A. Diploneis
- B. Coscinodiscus
- C. Stephanodiscus
- D. Camphyloneis

Answer: B



[View Text Solution](#)

162. Which of the following can be used as bacteriaological filter

- A. Gelidium

B. Batrachospermum

C. Oscillatoria

D. Cymbella

Answer: D



View Text Solution

163. Two species of Amoeba X and Y were kept in fresh water and got adapted. Species X developed to contractile vacuole. When both were transferred to sea water and got adapted, both X and Y lost their contractile vacuole. Form these observation we conclude that

A. Both X and Y are marine species

B. Species Y is marine and X is fresh water

C. Species X is marine and Y is fresh water

D. Both X and Y are fresh water

Answer: C



View Text Solution

164. Amoeba reacts

- A. Negatively to strong light and positively to weak light
- B. Positively to strong light and negatively to weak light
- C. Unaffected by light intensity
- D. Positive to both strong and weak light

Answer: A



Watch Video Solution

165. Which is wrong combination

- A. Haemocyanin-Prawn

- B. Haemoglobin in mammals - RBC
- C. Haemoglobin in plasma - Pheretima
- D. Haemozoin - Plasmodium cytoplasm

Answer: D



[Watch Video Solution](#)

166. Plasmodium, the malarial parasite, belongs to class

- A. Sarcodina
- B. Ciliata
- C. Sporozoa
- D. Dinophyceae

Answer: C



[Watch Video Solution](#)

167. Periodic appearance of malaria symptoms occurs due to periodic

- A. Entry of merozoites into erythrocytes
- B. Attack of liver cells by merozoites
- C. Formation of signet ring
- D. Release of pyrogen in blood

Answer: D



[View Text Solution](#)

168. Motile elongate zygote of Plasmodium occurs in

- A. Human RBCs
- B. Human liver
- C. Salivary glands of mosquito (Anopheles)
- D. Gut of mosquito (Anopheles)

Answer: D



Watch Video Solution

169. In Ameoba, pseudopodia are formed due to

- A. Contact with food
- B. Sol \Leftrightarrow gel change
- C. Movement towards area of higher temperature
- D. All the above

Answer: B



View Text Solution

170. Which stage of Plasmodium is infective for Mosquito

- A. Trophozoite

B. Gametocyte

C. Ookinete

D. Sporozoite

Answer: B



Watch Video Solution

171. Chromatid bodies occurs in Entamoeba during

A. Precyst stage

B. Early cysts

C. Tetranucleate

D. Trophozoites

Answer: B



Watch Video Solution

172. Amoeba stops producing pseudopodia during

- A. Alkaline condition
- B. Starvation
- C. Acidic condition
- D. Touch

Answer: B



[View Text Solution](#)

173. After how many days could a patient commonly feel malaria from the time of biting of mosquito

- A. 2-8 days
- B. 8-10 days
- C. 10-20 days
- D. 20-30 days

Answer: B



Watch Video Solution

174. Microfossils often present in petroleum producing formations are those of

- A. Radiolarians
- B. Diatoms
- C. Helizoans
- D. Foraminiferans

Answer: D



Watch Video Solution

175. Amoeba moves when

- A. Upper part of plasma-gel changes to plasmasol
- B. Lower part of plasmasol changes into gel
- C. Upper part of plasmasol changes into plasmagel
- D. All the above

Answer: C

 [Watch Video Solution](#)

176. A person suffering from a disease caused by Plasmodium experiences recurring chill and fever at the time when

- A. The sporozites released from RBCs are being rapidly killed and broken down inside spleen
- B. The trophozoites reach maximum growth and give out certain toxins

C. The parasite after its rapid multiplication inside RBCs ruptures them, releasing the stage to enter fresh RBCs

D. The microgametocytes and megagametocytes are being destroyed by the WBCs

Answer: C

 [Watch Video Solution](#)

177. Destruction of nucleus in Amoeba results in

A. Immediate death

B. Slowing down of metabolic activity and ultimate death

C. Quick locomotion

D. No change

Answer: B

 [Watch Video Solution](#)

178. Exoerythrocytic schisogony of Plasmodium takes place in

- A. RBC
- B. Leucocytes
- C. Liver in which cryptomerozoites are formed
- D. Liver in which metacryptomerozoites are formed

Answer: D



[Watch Video Solution](#)

179. In Plasmodium, gametocytes are formed form

- A. Schizont
- B. Trophozoite
- C. Sporozoite

D. Merozoite

Answer: D



[Watch Video Solution](#)

180. If all ponds and puddles are destroyed, the organism likely to be destroyed is

A. Leishmania

B. Trypanosoma

C. Ascaris

D. Plasmodium

Answer: D



[Watch Video Solution](#)

181. The chill and fever recurring after 48 hours in benign tertian malaria is due to

- A. Plasmodium vivax
- B. P. malariae
- C. P. falciparum
- D. None of the above

Answer: A



[Watch Video Solution](#)

182. In malaria, shivering occurs when

- A. Schizonts enter R.B.C.
- B. Sporozoites enter human body
- C. Merozoites are liberated from R.B.C. alongwith toxin
- D. Signet ring stage is attained

Answer: C



Watch Video Solution

183. Which one of the following sets of items in the option a-d are correctly categorized with one exception in it

A. Items Category Exception
UAA, UAG, UGA Stop codons *UAG*

B. Items Category Exception
Kangaroo, Koala, Wombat Australian marsupials Wombat

C.

Items Category Exception
Plasmodium, Cuscuta, Trypanosoma Protozoan parasites Cuscuta

D. Items Category Exception
Typhoid, Phenunomia, Diphtheria Bactrial disease Diphtheria

Answer: C



View Text Solution

184. Which of the following diseases is caused by a protozoan

- A. Influenza
- B. babesiosis
- C. Blastomycosis
- D. Syphilis

Answer: B

 [Watch Video Solution](#)

185. All eukaryotic unicellular organisms belong to

- A. Monera
- B. Protista
- C. Fungi
- D. Bacteria

Answer: B

 [Watch Video Solution](#)

186. Select the wrong statement

- A. Cell wall is present in members of Fungi and Plantae
- B. Mushrooms belong to Basidiomycetes
- C. Pseudopodia are locomotory and feeding structures in Sporozoans
- D. Mitochondria are the powerhouse of the cell in all kingdom except Monera

Answer: C



Watch Video Solution

187. Assertion : Slime moulds show alternation of generation.

Reason : The sporangia bearing slime moulds represents haplophase.

- A. If both the assertion and the reason are true but the reason is not correct explanation of the assertion

- B. If both the assertion and the reason are true and the reason is a correct explanation of the assertion
- C. If the assertion is true but the reason is false
- D. If both the assertion and reason are false

Answer: C

 [Watch Video Solution](#)

188. Assertion : Sandfly transmits Kala-azar.

Reason : In Kala-azar, the parasite damages the brain.

- A. If both the assertion and the reason are true but the reason is not a correct explanation of the assertion
- B. If both the assertion and the reason are true and the reason is a correct explanation of the assertion
- C. If the assertion is true but the reason is false

D. If both the assertion and reason are false

Answer: C

 [Watch Video Solution](#)

189. Assertion : *Trichomonas vaginalis* causes infection only in women.

Reason : *Trichomonas buccalis* lives in the buccal cavity.

- A. If both the assertion and the reason are true but the reason is not correct explanation of the assertion
- B. If both the assertion and the reason are true and the reason is a correct explanation of the assertion
- C. If the assertion is true but the reason is false
- D. If the assertion is false but the reason is true

Answer: D

 [Watch Video Solution](#)

190. Assertion : Euglena is studied as an animal as well as a plant.

Reason : Euglena is more an animal than a plant.

- A. If both the assertion and the reason are true but the reason is not correct explanation of the assertion
- B. If both the assertion and the reason are true and the reason is a correct explanation of the assertion
- C. If the assertion is true but the reason is false
- D. If both the assertion and reason are false

Answer: B



[Watch Video Solution](#)

191. Assertion : Amoeba contains a contractile vacuole.

Reason : It helps in both digestion and osmoregulation.

- A. If both the assertion and the reason are true but the reason is not correct explanation of the assertion
- B. If both the assertion and the reason are true and the reason is a correct explanation of the assertion
- C. If the assertion is true but the reason is false
- D. If both the assertion and reason are false

Answer: C



Watch Video Solution

192. Assertion : Amoebiasis is caused by Amoeba.

Reason : The protist feed on red blood corpuscles.

- A. If both the assertion and the reason are true but the reason is not correct explanation of the assertion

- B. If both the assertion and the reason are true and the reason is a correct explanation of the assertion
- C. If the assertion is true but the reason is false
- D. If the assertion is false but the reason is true

Answer: D

 [Watch Video Solution](#)

193. Assertion : Erythrocytic merozoites form gametocytes.

Reason : Gametocytes are of two - male and female

- A. If both the assertion and the reason are true but the reason is not correct explanation of the assertion
- B. If both the assertion and the reason are true and the reason is a correct explanation of the assertion
- C. If the assertion is true but the reason is false

D. If both the assertion and reason are false

Answer: B



Watch Video Solution

194. Assertion : Plasmodium causes disease in female Anopheles mosquitoes.

Reason : Female Anopheles mosquitoes feed on human blood.

- A. If both the assertion and the reason are true but the reason is not correct explanation of the assertion
- B. If both the assertion and the reason are true and the reason is a correct explanation of the assertion
- C. If the assertion is true but the reason is false
- D. If the assertion is false but the reason is true

Answer: D



[Watch Video Solution](#)

195. Assertion : Malarial fever appear at merzoite stage of Plasmodium.

Reason : The infective stage of Plasmodium is sporozoite.

- A. If both the assertion and the reason are true but the reason is not correct explanation of the assertion
- B. If both the assertion and the reason are true and the reason is a correct explanation of the assertion
- C. If the assertion is true but the reason is false
- D. If both the assertion and reason are false

Answer: B



[View Text Solution](#)

196. Assertion : Schizogony is an asexual reproduction of female Anopheles mosquito.

Reason : It takes place only in human liver cells.

- A. If both the assertion and the reason are true but the reason is not correct explanation of the assertion
- B. If both the assertion and the reason are true and the reason is a correct explanation of the assertion
- C. If the assertion is true but the reason is false
- D. If both the assertion and reason are false

Answer: C



[Watch Video Solution](#)

197. During endocytosis,

- A. The cell divides its cytoplasm during mitosis
- B. The cell digests itself
- C. The cell engulfs and internalises materials using its membrane

D. The cell enables the extracellular digestion of large molecules

Answer: C



Watch Video Solution

198. Cell wall are preserved as fossils in one of the following

A. Dinophyceae

B. Bacillariophyceae

C. Cyanophyceae

D. Euglenophyceae

Answer: B



Watch Video Solution

199. Chief advantage of encystment to an Amoeba is

- A. The chance to get rid of accumulated waste products
- B. The ability to survive during adverse physical conditions
- C. The ability to live for some time without ingesting food
- D. Protection from parasites and predators

Answer: B

 [Watch Video Solution](#)

200. In which of the following animal dimorphic nucleus is found

- A. *Amoeba proteus*
- B. *Plasmodium vivax*
- C. *Paramecium*
- D. *Trypanosoma gambiense*

Answer: C

 [Watch Video Solution](#)

201. Amoeba is called immortal and it is scattered all over the world due to

- A. Conjugation
- B. Regeneration
- C. Binary fission
- D. Sexual reproduction

Answer: C



Watch Video Solution

202. Mode of feeding in free living protozoans is

- A. Holozoic
- B. Saprozoic
- C. Both (a) and (b)

D. None of these

Answer: C



Watch Video Solution

203. Select the matching pair

A. Giardia-diarrhea

B. Plasmodium -pyorrhoea

C. Leishmania - diarrhea

D. Trypanosoma - kala-azar

Answer: A



Watch Video Solution

204. In Trypanosoma gambiense

- A. Reproduction is by multiple fission
- B. There are two nuclei, a micronucleus and a macronucleus
- C. There are two locomotory organelles, flagellum and an undulating membrane
- D. Tse-tse fly has no role to play in life cycle

Answer: D



Watch Video Solution

205. Trypanosoma finally invades

- A. Brain
- B. Liver
- C. Blood
- D. Cerebrospinal fluid

Answer: D



[Watch Video Solution](#)

206. These organisms are fungus like in one phase of their life cycle and Amoeba like in another phase of their life cycle

- A. Diatoms
- B. Slime molds
- C. Dinoflagellates
- D. Water molds

Answer: B



[Watch Video Solution](#)

207. Which infective stage of the plasmodium contained by the female Anopheles that transfer into human body and causes malaria

- A. Mesozoites

B. Gametocyte

C. Sporozoite

D. Schizont

Answer: C



[Watch Video Solution](#)

208. In patient suffering from malaria, the cells having Schuffner's granules are

A. Gametocytes

B. Signet ring trophozoites

C. Infected erythrocytes

D. Infected liver cells

Answer: C



[Watch Video Solution](#)

209. Which is true about Trypanosoma ?

- A. Polymorphic
- B. Monogenetic
- C. Facultative parasite
- D. Non-pathogenic

Answer: A



[Watch Video Solution](#)

210. Type of nutrition present in Entamoeba is

- A. Saprozoic
- B. Parasitic
- C. Autotrophic
- D. None of these

Answer: B



[Watch Video Solution](#)

211. Common trait between Amoeba and leucocyte is

- A. Encystment
- B. Pseudopodia
- C. Sporulation
- D. Contractile vacuole

Answer: B



[Watch Video Solution](#)

212. Which is correct

- A. Slime moulds are haploid

- B. Protozoan lack cell wall
- C. Dinoflagellates lack cell wall
- D. Pellicle is absent in Euglena

Answer: B



[Watch Video Solution](#)

213. Amoeba takes food through

- A. Phagocytosis
- B. Pinocytosis
- C. Endocytosis
- D. All the above

Answer: D



[Watch Video Solution](#)

214. Which is absent in Amoeba ?

- A. Golgi apparatus
- B. Lysosome
- C. Centriole
- D. Plasmalemma

Answer: C



Watch Video Solution

215. Amoeba sticks to substratum by means of

- A. Rough surface
- B. Plasmalemma
- C. Protein
- D. None of the above

Answer: B



Watch Video Solution

216. In Plasmodium, diploid stage is

- A. Oocyst
- B. Gamont
- C. Schizont
- D. Sporozoite

Answer: A



Watch Video Solution

217. *E. histolytica* does not show

- A. Binary fission

B. Budding

C. Encystation

D. Excystation

Answer: B



[Watch Video Solution](#)

218. Just as *Xenopsylla* is to *Yersinia pestis*, so is:

A. *Glossina palpalis* to *Wuchereria bancrofti*

B. *Culex* to *Plasmodium falciparum*

C. *Homo sapiens* to *Taenia solium*

D. *Phlebotomus* to *Leishmania donovani*

Answer: D



[Watch Video Solution](#)

219. Hyaline cap in Amoeba is formed

- A. Around food vacuole
- B. Around contractile vacuole
- C. Around nucleus
- D. In front of pseudopodium

Answer: D



[View Text Solution](#)

220. Binary fission in Amoeba occurs by

- A. Amitosis
- B. Mitosis
- C. Meiosis
- D. None of these

Answer: B



Watch Video Solution

221. Which animal exhibits sexual dimorphism

A. Lobosa

B. Ciliata

C. Sporozoans

D. Radiolarians

Answer: A



View Text Solution

222. During conjugation in Paramecium

A. Out of the four micronuclei formed, three nuclei degenerate

B. Out of the twelve macronuclei formed, four nuclei degenerate

C. Zygote nucleus undergoes eight successive divisions in each conjugant

D. Out of the sixteen nuclei formed zygote, 12 become macronuclei and 4 micronuclei

Answer: A



Watch Video Solution

223. In humans, schizont stage of Plasmodium is found in

A. Liver cells only

B. Liver, spleen and blood cells

C. RBCs and liver cells

D. RBCs only

Answer: C



[Watch Video Solution](#)

224. Malaria parasite harm liver cells

- A. In erythrocytic cycle
- B. After erythrocytic cycle
- C. Before erythrocytic cycle
- D. None of these

Answer: C



[View Text Solution](#)

225. Select the mismatch

- A. Frankia - Alnus
- B. Rhodospirillum - Mycorrhiza
- C. Anabaena - Nitrogen fixer

D. Rhizobium - Alfalfa

Answer: B



Watch Video Solution