

BIOLOGY

BOOKS - UNIVERSAL BOOK DEPOT 1960 BIOLOGY (HINGLISH)

REPRODUCTIVE HEALTH

Reproductive Health

1. The term 'Health' is defined in many ways. The most accurate definition of the health would be

A. Health is the state of body and mind in a balanced condition

B. Health is the reflection of a smiling face

C. Health is a state of complete physical, mental and social well-being

D. Health is the symbol of economic prosperity

Answer: C



Watch Video Solution

2. Increased IMR and decreased MMR in a population will

A. Cause rapid increase in growth rate

B. Result in decline in growth rate

C. Not cause significant change in growth rate

D. Result in an explosive population/exp

Answer: c

 [Watch Video Solution](#)

3. A national level approach to build up a reproductively healthy society was taken up in our country in

A. 1950s

B. 1960s

C. 1980s

D. 1990s

Answer: a

 [Watch Video Solution](#)

4. World Health Day is celebrated every year on

A. 7th March

B. 7th April

C. 7th July

D. 7th May

Answer: B



Watch Video Solution

5. A stable population is one which has got

A. No growth of population in the last decade

B. Constant rate of growth of population in the last decade

C. Slow growth of population in the last decade

D. Growth of 20% in excess than the last decade

Answer: B



Watch Video Solution

6. Now -a-days India is under which stage of demographic cycle

- A. Early expanding
- B. Late expanding
- C. Phase of decline
- D. High stationary

Answer: b



Watch Video Solution

7. If India's population is increasing at the rate of 13.6 million per year, then what percentage of total increase in world's population in one calendar year is contributed by the Indians

A. 0.1

B. 0.17

C. 0.15

D. 0.2

Answer: b



Watch Video Solution

8. The age groups in a population are classified by

A. Reproduction rate

B. Death rate

C. Age of marriage

D. Sex ratio

Answer: a



Watch Video Solution

9. Sex ratio' means

A. Number of males/1000 femeles

B. Number of frmales/1000 males

C. Both

D. None

Answer: b

 [Watch Video Solution](#)

10. From the sexually transmitted diseases mentioned below, identify the one which does not specifically affect the sex organs.

- A. Syphilis
- B. AIDS
- C. Gonorrhoea
- D. Genital warts

Answer: B

 [Watch Video Solution](#)

11. Which of the following is not a sexually transmitted disease

A. Acquired Immuno Deficiency Syndrome (AIDS)

B. Trichomoniasis

C. Gonorrhoea

D. Syphilis

Answer: c



Watch Video Solution

12. One of these causes nongonococcal urethritis

A. *Treponema pallidum*

B. *Neisseria gonorrhoeae*

C. *Chlamydia trachomatis*

D. HSV-1

Answer: c



Watch Video Solution

13. Profuse, yellowish, greenish frothy smelling discharge from vagina is due to infection of

- A. *Troponema pallidum*
- B. *Chlamydia*
- C. *Trichomonas vaginalis*
- D. *Neisseria*

Answer: c



Watch Video Solution

14. Genital warts are due to sexually transmitted disease spread by

- A. Herpes virus
- B. Papilloma virus
- C. Hepatitis A
- D. Trichomonas

Answer: B



[Watch Video Solution](#)

15. The sexually transmitted disease, that can affect both the male and the female genitals and may damage the eyes of babies born of infected mothers is

Or It is disease which mainly affects mucous membrane of

urinogenital tract. In males, burning feeling on passing urine, after a yellow discharge occurs, that is accompanied by fever, headache and feeling of illness. Its name is

- A. AIDS
- B. Syphilis
- C. Gonorrhoea
- D. Hepatitis

Answer: c

 [Watch Video Solution](#)

16. Which of the following represents the correct match of a sexually transmitted infection with its pathogen ?

- A. Urethritis-Bacillus anthracis

B. Soft sore- Bacillus brevis

C. Syphilis - Treponema pallidum

D. Gonorrhoea- Entamoeba histalytica

Answer: C



Watch Video Solution

17. Which one of the following groups includes are sexually transmitted diseases

A. AIDS, syphilis, cholera

B. HIV, malaria, trichomoniasis

C. Gonorrhoes, hepatitis-B, chlamydia

D. Hepatitis-B, haemophilia, AIDS

Answer: C



Watch Video Solution

18. Which one of the following statements is correct regarding sexually Transmitted Diseases (STD)

- A. A person may contact syphilis by sharing milk with one already suffering from the disease
- B. Hemophilia is one of STD
- C. Genital herpes and sickle-cell anaemia are both STD
- D. The chances of a 5 year boy contacting a STD are very little

Answer: a



Watch Video Solution

19. Match the following sexually transmitted diseases (Column-I) with their causative agent (Column-II) and select the correct option

	Column-I		Column-II
(A)	Gonorrhoea	(i)	HIV
(B)	Syphilis	(ii)	<i>Neisseria</i>
(C)	Genital Warts	(iii)	<i>Treponema</i>
(D)	AIDS	(iv)	Human Papilloma - Virus

- A. (A) (B) (C) (D)
(a) (ii) (iii) (iv) (i)
- B. (A) (B) (C) (D)
(b) (iii) (iv) (iv) (ii)
- C. (A) (B) (C) (D)
(c) (iv) (ii) (iii) (i)
- D. (A) (B) (C) (D)
(d) (iv) (iii) (ii) (i)

Answer: a



Watch Video Solution

20. Given below are four methods (A-D) and their modes of action (a-d) in achieving contraception. Select their correct matching for the four options that follow

Method	Mode of Action
A The pill	(a) Prevents sperms
B Condom	(b) Prevents implantation
C Vasectomy	(c) Prevents ovulation
D Copper T	(d) Suman contains no sperma

A. A-©,B-(d), C-(d), D-(b)

B. A-(c), B-(d),C-(a),D-(d)

C. A-(c), B-(a),C-(d),D-(b)

D. A-(d), B-(a),C-(b),D-©

Answer: c



Watch Video Solution

21. Which of the following two statements are correct ?

- (i) Medical termination of pregnancy (MTP) during first trimester is generally safe
- (ii) Generally chances of conception are nil until mother breast-feeds the infant upto two years
- (iii) Intrauterine devices like copper-T are effective contraceptives
- (iv) Contraception pills may be taken upto one week after coutus to prevent conception.

A. A,C

B. A,B

C. B,C

D. C,D

Answer: a



[Watch Video Solution](#)

22. Which of these is used to control human population

A. Estrogen+ progesterone

B. IUCD and MTP

C. Tubectomy & Vasectomy

D. All of these

Answer: D



[Watch Video Solution](#)

23. What is the function of copper-T

A. Cheeks mutation

- B. Stops fertilization
- C. Stop zygote formation
- D. Stops obliteration of blastocoel

Answer: B



Watch Video Solution

24. Assisted reproductive to technology. IVF involves transfer of

- A. Zygote into the uterus
- B. Embryo with 16 blastomers into the fallopin tube
- C. Ovum into the fallopian tube
- D. Zygote into the fallopian tube

Answer: d

 [Watch Video Solution](#)

25. Surgical removal or cutting and ligation of the ends of oviduct or small part of the fallopian tube is removed or tied up is known as

- A. Tubectomy
- B. Oviductomy
- C. Vasectomy
- D. Ovariectomy

Answer: A

 [Watch Video Solution](#)

26. Surgical removal of testes is known as

A. Testectomy

B. Gonadectomy

C. Castration

D. None

Answer: c



Watch Video Solution

27. Progesterone pill helps in preventing pregnancy by allowing

A. Ova formation

B. Fertilization

C. Implantation

D. None of these

Answer: a



Watch Video Solution

28. Test tube baby means a baby born when

- A. It develops from a non-fertilized egg
- B. It developed in a test tube
- C. It is developed through tissue culture method
- D. The ovum is fertilised externally and thereafter implanted
in the uterus

Answer: D



Watch Video Solution

29. Which of the following is wrongly matched

- A. IUI - semen collected from husband or donor is artificially introduced either into the vagina or into the uterus
- B. GIFT - transfer of embryos with more than 8 blastomeres into the Fallopian tube
- C. ICSI - sperm directly injected into the ovum
- D. ZIFT - transfer of embryos with up to 8 blastomeres into the Fallopian tube

Answer: b



[Watch Video Solution](#)

30. Surrogate mother is used for

- A. Induction of lactation
- B. Artificially inseminated female
- C. Future mother with transplanted embryo
- D. Artificial insemination

Answer: c



Watch Video Solution

31. Surgical removal of uterus is called

- A. Vasectomy
- B. Tubectomy
- C. Hysterectomy
- D. Anantomy

Answer: C



Watch Video Solution

32. Which of the following birth control measures can be considered as the safest ?

- A. The rhythm method
- B. The use of physical barriers
- C. Termination of unwanted pregnancy
- D. Sterllization techniques

Answer: d



Watch Video Solution

33. The success of birth control programmes in controlling population growth is dependent on

- A. Use of contraceptives
- B. Tubectomy
- C. Vasectomy
- D. Acceptability of the above by the people

Answer: d



[Watch Video Solution](#)

34. Trade name of weekly oral contraceptive pill is

- A. Mala
- B. Saheli

C. Mala A

D. Mala D

Answer: b



Watch Video Solution

35. Daily oral contraceptive pill is

A. Mala C

B. Mala N and Mala D

C. Mala A

D. Mala D

Answer: b



Watch Video Solution

36. Amniocentesis involves the analysis of

- A. Amnion
- B. Body fluid of amniotes
- C. Amino acids of protein
- D. Amniotic fluid

Answer: d



[Watch Video Solution](#)

37. Which one of the following is tested by the technique of amniocentesis

or The permissible use of the technique amniocentesis is for

- A. Biochemical abnormalities in the foetus
- B. Errors of metabolism in the foetus
- C. Chromosomal abnormalities (genetic abnormality) in the foetus (Karyotype)
- D. All of the above

Answer: c



Watch Video Solution

38. Foetal sex can be determined by examining cells from the amniotic fluid by looking for

- A. Barr bodies
- B. Autosomes
- C. Chiasmata

D. Kinetochore

Answer: a



Watch Video Solution

39. Amniocentesis is a process to

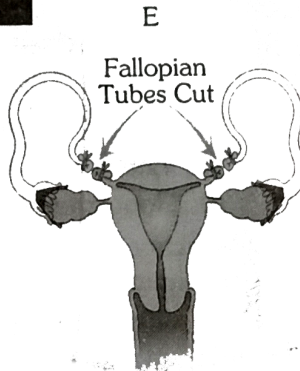
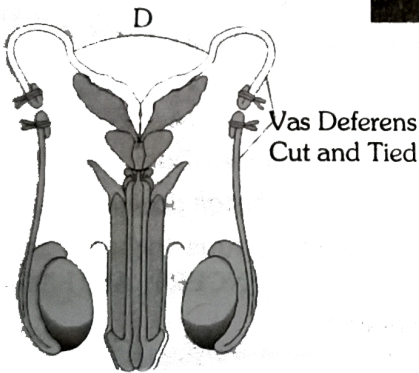
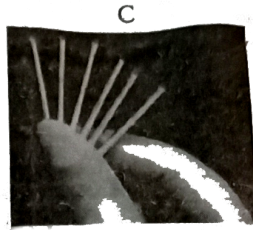
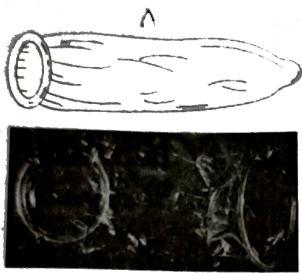
- A. Determine any disease in heart
- B. Determine any hereditary disease in the embryo
- C. Know about the disease of brain
- D. All of these

Answer: b



Watch Video Solution

40. Match the following figures with the related method of birth control



- 1 Tubectomy 2 Vasectomy
- 3 Implants 4 Condoms
- 5 Copper T 6 Cervical caps

A. A-6,B-5,C-4,D-1,E-2

B. A-4,B-5,C-3,D-2,E-1

C. A-3,B-5,C-3,D-1,E-2

D. A-6,B-5,C-3,D-2,E-1

Answer: b



Watch Video Solution

41. In amniocentesis, the fluid is taken from

- A. Foetal blood
- B. Mother's blood
- C. Baby fluid mother
- D. Fluid surrounding foetus

Answer: d



Watch Video Solution

42. Cu ions released from copper releasing intrauterine devices (IUDs)

- A. Prevent ovulation
- B. Make uterus unsuitable for implantation
- C. Increase phagocytosis of sperms
- D. Supperss sperm motility

Answer: c,d



Watch Video Solution

43. The "World Intellectual Property Day" is observed on

- A. Febuary, 29th
- B. June, 30th

C. April, 26th

D. September, 5th

Answer: c



Watch Video Solution

44. The technique called Gamete intra Fallopian Transfer (GIFT) is recommended for those females

A. Whose cervical canal is too narrow to allow passage for the sperms

B. Who can not provide suitable environment for fertilisation

C. Who can not produce an ovum

D. Who can not retain the foetus inside uterus

Answer: c



Watch Video Solution

45. Medical Termination of pregnancy (MTP) is considered safe up to how many weeks of pregnancy

- A. Six weeks
- B. Eight weeks
- C. Twelve weeks
- D. Eighteen weeks

Answer: c



Watch Video Solution

46. Which of the following is the most widely accepted method of contraception in india at present ?

- A. IUDs (Intra uterine devices)
- B. Cervical caps
- C. Tubectomy
- D. Diphrangms

Answer: a



Watch Video Solution

47. One of the following is not a method of contraception- which one

- A. Condoms

B. Pills of a combination of oxytocin and vasopressin

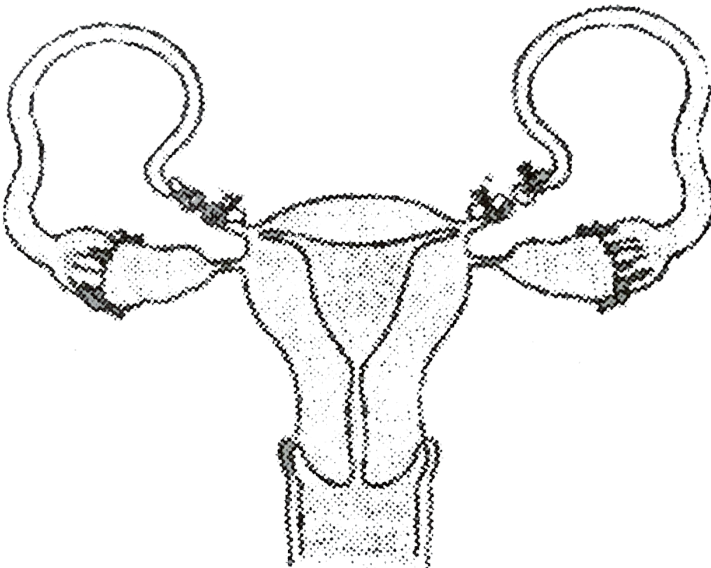
C. Lippes loop

D. Tubectomy

Answer: b

 [Watch Video Solution](#)

48. What is the figure given below showing in particular ?



A. Ovarian cancer

B. Uterine cancer

C. Tubectomy

D. Vasectomy

Answer: c



Watch Video Solution

49. Match the contraceptive methods given under column I with their examples given under column II and select the correct option from the given codes

Column I

Column II

A. Chemical

(i)

Tubectomy and vasectomy

B. IUDs

(ii)

Copper T and loop

C. Barriers

(iii)

Condom and cervical cap

D. Sterilisation

(iv)

Spermicidal jelly and foam

(v)

Coitus interruptus and calender method

A. $A=s, B=q, C=r, D=p$

B. $A=s, B=t, C=q, D=r$

C. $A=p, B=t, C=q, D=t$

D. $A=p, B=q, C=t, D=p$

Answer: a



Watch Video Solution

50. One of the legal methods of birth control is

A. By a premature ejaculation during coitus

B. Abortion by taking an appropriate medicine

C. By abstaining from coitus from day 10 to 17 of the menstrual cycle

D. By having coitus at the time of day break

Answer: b



Watch Video Solution

51. In context of Amniocentesis, which of the following statement is incorrect

- A. It is usually done when a women is between 14-16 weeks pregnant
- B. It is used for prenatal sex determination
- C. It can be used for detection of Down syndrome
- D. It can be used for detection of Cleft palate

Answer: d

52. Which of the following approaches does not give the defined action of contraceptive

(a)	Barrier methods	Prevent fertilization
(b)	Intra uterine devices	Increase phagocytosis of sperms, suppress sperm motility and fertilizing capacity of sperms
(c)	Hormonal contraceptives	Prevent/retard entry of sperms, prevent ovulation and fertilization
(d)	Vasectomy	Prevents spermatogenesis

A. "Barrier methods" "Prevent fertilization"

B. "Intra uterine device" "Increase phogocytosis of sperms, suppress sperm motility and frtilizing capacity of sperms"

C. "Hormonal contraceptives" "Prevent/retry of sperms, prevent ovulation and fertilization"

D. "Vasectomy" "Prevents spermatogenesis"

Answer: d



Watch Video Solution

53. The contraceptive 'SAHELI'

- A. Blocks estrogen receptors in the uterus, preventing eggs from getting implanted.
- B. Increase the concentration of estrogen and prevents ovulation in females
- C. Is an IUD
- D. Is a post-coital contraceptive

Answer: a

 [Watch Video Solution](#)

54. The method of directly injecting a sperm into ovum in assisted reproductive technology is called

A. GIFT

B. ZIFE

C. ICSI

D. ET

Answer: c

 [Watch Video Solution](#)

55. Increased IMR and decreased MMR in a population will

- A. Cause rapid increase in growth rate
- B. Result in decline in growth rate
- C. Not cause significant change in growth rate
- D. Result in an explosive population

Answer: c



Watch Video Solution

56. Intensity lactating mothers do not generally conceive due to the

- A. Suppression of gonadotropins
- B. Hyper secretion of gonadotropins
- C. Suppression of gametic transport
- D. Suppression of fertilization

Answer: a



Watch Video Solution

57. Sterilisation techniques are generally full proof methods of contraception with least side effects. Yet, this is the last option for the couples because

(i) It is almost irreversible

(ii) of the misconception that it will reduce sexual urge/drive

(iii) it is a surgical procedure

(iv) of lack of sufficient facilities in many parts of the country

Choose the correct option

A. It is almost irreversible

B. Of the misconception that it will reduce sexual urge

C. It is a surgical procedure

D. Of lack of sufficient facilities in many parys of the country

Answer: d



Watch Video Solution

58. A national level approach to build up a reproductively healthy society was taken up in our country in

A. 1950s

B. 1960s

C. 1980s

D. 1990s

Answer: a



Watch Video Solution

59. Emergency contraceptives are effective if used within

- A. 72 hrs of coitus
- B. 72 hrs of ovulation
- C. 72 hrs of menstruation
- D. 72 hrs of implantation

Answer: c



Watch Video Solution

60. Diaphragms are contraceptive device used by the females.

Choose the correct option from the statement given below

- A. They are introduced into the uterus

- B. They are placed to cover the cervical region
- C. They act as physical barriers for sperm entry
- D. They act as spermicidal agents

Answer: c



Watch Video Solution

61. The correct surgical procedure as a contraceptive method is

- A. Ovariectomy
- B. Hysterectomy
- C. Vasectomy
- D. Castration

Answer: c



[Watch Video Solution](#)

62. From the sexually transmitted diseases mentioned below, identify the one which does not specifically affect the sex organs.

A. Syphilis

B. AIDS

C. Gonorrhoea

D. Genital warts

Answer: b



[Watch Video Solution](#)

63. Condoms are one of the most contraceptives because of the following reasons

- A. These are effective barriers for insemination
- B. They do not interfere with coital act
- C. These help in reducing the risk of STDs
- D. All of the above

Answer: d



Watch Video Solution

64. Choose the correct statement regarding the ZIFT procedure

- A. Ova collected from a female donor are transferred to the fallopian tube to facilitate zygote formation

B. Zygote is collected from a female donor and transferred to the fallopian tube

C. Zygote is collected from a female donor and transferred to the uterus

D. Ova collected from a female donor and transferred to the uterus

Answer: b



Watch Video Solution

65. The study of human population statistically is known as

A. Chromology

B. Demography

C. Population science

D. Sinography

Answer: b



Watch Video Solution

66. Assisted Reproductive Tecnology does not include

A. Zygote extra fallopian transfer

B. In vitro fertilization and embryo transfer

C. Artificial insemination

D. Gamete intra fallopian transfer

Answer: a



Watch Video Solution

67. What is the full form of RCH

- A. Reproduction and Child Health Care
- B. Reproduction, Contraception and Health
- C. Reproductive and Child Health
- D. None

Answer: c



[Watch Video Solution](#)

68. What is true for natural methods of contraception

- A. They increase phagocytosis of sperms
- B. They employ barriers to prevent fertilization

C. They are natural ways of avoiding chances fertilization

D. They are surgical methods and are terminal methods

Answer: c



Watch Video Solution

69. MPT is practised mainly to

A. Get rid of unwanted female child legally

B. Get rid of unwanted pregnancies due to failure of
contraception or rapes

C. Both(a) and (b)

D. Decrease population size

Answer: b

 [Watch Video Solution](#)

70. STDs lead to

- A. Itching. Fluid discharge, slight pain, swelling etc.
- B. Pelvic inflammatory Diseases (PID), ectopic pregnancy, still births, infertility, abortion etc.
- C. Both (a) and (b)
- D. None

Answer: c

 [Watch Video Solution](#)

71. Assisted reproductive technologies (ART) do not include

A. GIFT and ZIFT

B. CVS and IUCD

C. IUI and ET

D. Intra uterine ET

Answer: b



Watch Video Solution

72. What is the popular name of IVE

A. Amniocentesis

B. Tubectomy

C. Test tube baby

D. GIFT

Answer: c



Watch Video Solution

73. Surgical methods of contraception prevent

- A. Gamete formation
- B. Gamete motility
- C. Both (a) and (b)
- D. Spermatogenesis only

Answer: b



Watch Video Solution

74. Birth control pills check ovulation in female by inhibiting the secretion of

- A. Follicle stimulating hormone
- B. Luteinizing hormone
- C. Both
- D. None

Answer: c



Watch Video Solution

75. Which of the following is a hormone releasing Intra Uterine Device (IUD)

- A. Cervical cap

B. Vault

C. Multiload 375

D. LNG -20

Answer: d



Watch Video Solution

76. July 11 is observed as

A. World population day

B. No tobacco day

C. World environment day

D. World health day

Answer: a

 [Watch Video Solution](#)

77. Most literate state of India is

- A. Kerala
- B. Goa
- C. U.P.
- D. Sikkim

Answer: a

 [Watch Video Solution](#)

78. Who one of the following is awarded Noble prize in physiology/Medicine 2010 for in vitro fertilization

A. Rober Edwards

B. Patrick Stiptoe

C. Gibert Brown

D. Dr. Carig Venter

Answer: a



Watch Video Solution

79. The Test -tube Babby programme employs which one of the following techiques

A. Intra cytoplasmic sperm injection (ICSI)

B. Intra uterine insemination (IUI)

C. Gamete intra fallopia transfer (GIFT)

D. Zygote intra fallopian transfer (ZIFT)

Answer: d



Watch Video Solution

80. What is false for ZIFT

- A. ZIFT-Zygote intra Fallopian Transfer
- B. It follow IVF
- C. Zygote early embryo
- D. Embryos with more than 8 blastomers are transferred to the uterus

Answer: d



Watch Video Solution

81. In vitro fertilisation is a technique that involves transfer of which one of the following into the Fallopian tube ?

- A. Zygote only
- B. Embryo only, upto 8 cell stage
- C. Either zygote or early embryo upto 8 cell stahe
- D. Embryo of 32 cell stage

Answer: c



Watch Video Solution

82. Choose the right one among the statements given below.

- A. IUDs are generally inserted by the user herself
- B. IUDs increase phagocytosis reaction in the uterus

C. IUDs suppress gametogenesis

D. IUDs once inserted need not be replaced

Answer: b



Watch Video Solution

83. Following statements are given regarding MTP. Choose the correct options given below.

(i) MTPs are generally advised during first trimester

(ii) MTPs are used as a advised during first trimester

(iii) MTPs are always surgical

(iv) MTPs require the assistance of qualified medical personnel.

A. (i) and (iii)

B. (ii) and (iii)

C. (i) and (iv)

D. (i) and (ii)

Answer: c



[Watch Video Solution](#)

84. What is the drawback of amniocentesis

A. It may injure the foetus

B. It may injure the foetus

C. It is wrong I n 50% cases

D. It is misused intermination of female pregnancies

Answer: d



[Watch Video Solution](#)

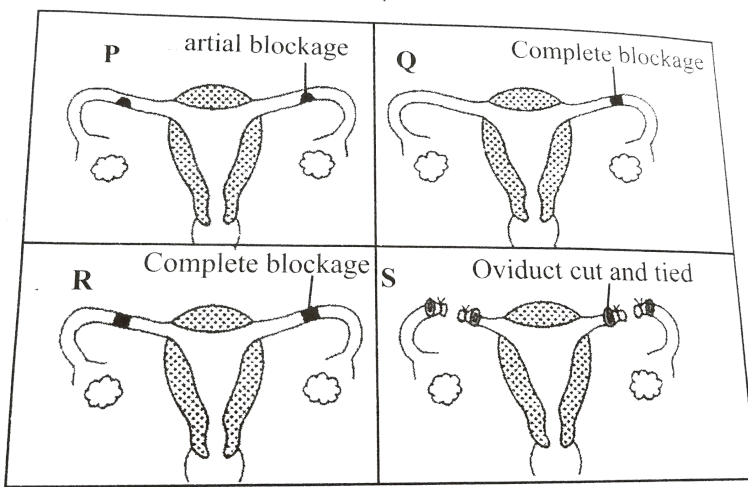
85. Which of the following cannot be detected in a developing foetus by amniocentesis

- A. Jaundice
- B. Klinefelter syndrome
- C. Sex of the foetus
- D. Down syndrome

Answer: a

 [Watch Video Solution](#)

86. The accompanying diagram shows the uterine tubes of four women (P,Q,R and S)



In which two women is fertilisation impossible at present ?

- A. P and Q
- B. Q and R
- C. R and S
- D. S and P

Answer: c

 [Watch Video Solution](#)

87. Progestasert in and IUD which makes the uterus unsuitable and cervix hostile to the sperms as they are

- A. Hormone releasing IUDs
- B. Copper releasing IUDs
- C. Ideal contraceptive
- D. Non-medicated IUDs

Answer: a



Watch Video Solution

88. In case of a couple where the male is having a very low sperm count, which technique will be suitable for fertilisation

- A. Intrauterine transfer

B. Gamete intracytoplasmic fallopian transfer

C. Artificial Insemination

D. Intracytoplasmic sperm injection

Answer: c



Watch Video Solution

89. Assertion : Test tube baby has raised severla legal problem.

Reason : It involves in vitro fertilization followed by embryo transfer.

A. If both the assertion and the reason are true and the reason is a correct explanation of the assertion

B. If both the assertion and reason are true but the reason is not a correct explanation of the assertion

C. If the assertion is true but the reason is false

D. If both the assertion and reason are false

Answer: b



Watch Video Solution

90. Assertion : Natality rate increases the population size and population density both.

Reason : Natality increase the number of individuals in an area by births.

A. If both the assertion and the reason are true and the reason is a correct explanation of the assertion

B. If both the assertion and reason are true but the reason is not a correct explanation of the assertion

C. If the assertion is true but the reason is false

D. If both the assertion and reason are false

Answer: a



Watch Video Solution

91. Assertion : Use of condom is a sageguard against AIDS and sexual diseases beside checking pregnancy.

Reason : Certain contraceptives are planted under the skin of the upper arm to prevent pregnancy.



Watch Video Solution

92. Assertion : Biologically, woman is superior to man.

A women provides nutrition to developing foetus during

gestation and also nourishes the body on her milk after its birth.



[Watch Video Solution](#)

93. Amniocentesis is the withdrawal of amniotic fluid in

A. Menopause

B. Lactation

C. Gestation

D. Pregnancy

Answer: d



[Watch Video Solution](#)

94. When environmental conditions are non-limiting what will happen

- A. Maximum mortality and minimum natality
- B. Mortality minimum
- C. Natality minimum
- D. Motality maximum

Answer: a



Watch Video Solution

95. The lone term planing for human civilization is

- A. Increase in food production
- B. Colonisation of rerely populated area

C. Control of human diseases

D. None of the above

Answer: b



Watch Video Solution

96. At what stage the embryo is implanted in the uterus

A. Immediate after fertilization

B. After 16 cells stage

C. After 64 cells stage

D. After 32 cells stage

Answer: d



Watch Video Solution

97. What is the purpose of tubectomy

- A. To prevent embryonic tubectomy
- B. To prevent sexual intercourse
- C. To prevent fomation of eggs
- D. To prevent fertilization

Answer: d



[Watch Video Solution](#)

98. "Saheli" - a new oral contraceptive for rthe females, was developed by the scientists at which institute

- A. C.D.R.I. - Lucknow

B. I.I.Sc. - Benglore

C. C.S.I.R. - New Delhi

D. I.C.M.R. - New Delhi

Answer: a



Watch Video Solution

99. Artificial insemination means

A. Introduction of sperms of a healthy donor directly into the

ovary

B. Transer of sperms of a healthy donor to a test tube

containing ova

C. Transfer of sperms of husband to a test tube containing ova

D. Artificial introduction of sperm of a healthy donor into the vagina

Answer: d



Watch Video Solution