



# BIOLOGY

**BOOKS - UNIVERSAL BOOK DEPOT**

**1960 BIOLOGY (HINGLISH)**

## EVOLUTION

### Evolution

1. Stanley Miller proposed origin of life by

A. Chemical synthesis

B. Abiogenesis

C. Biogenesis

D. None of these

**Answer: A**



**Watch Video Solution**

2. Hot dilute soup was given by

A. Oparin

B. Haldane

C. Urey

D. None of these

**Answer: B**



**Watch Video Solution**

**3. Which of the following statements is incorrect**

A. J.B.S. Haldane-law of continuity of  
germplasm

B. Louis Pasteur-germ theory of disease  
and immunology

C. de Vries-mutation theory

D. Lemaitre-big bang theory

**Answer: A**



**Watch Video Solution**



4. Which one of the following experiments suggests that simplest living organisms could not have originated spontaneously from non-living matter

A. Larvae could appear in decaying organic matter

B. Microbes did not appear in stored meat

C. Microbes appeared from unsterilized organic matter

D. Meat was not spoiled, when heated and kept sealed in a vessel.

**Answer: D**

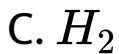


**Watch Video Solution**

5. Which of the following was most likely to have been absent in free form in the primordial atmosphere at the time of origin of life

Or

Miller performed experiment to prove molecular evolution of life. Which molecule was not present in Miller's experiment



**Answer: A**



**Watch Video Solution**

6. Nucleoprotein gave most probably the first sign of

A. Life

B. Amino acids

C. Soil

D. Sugar

**Answer: A**



**Watch Video Solution**

7. The complex organic compounds that may have first evolved in the direction of origin of life on earth, may have been

- A. Proteins and amino acids
- B. Proteins and nucleic acids
- C. Urea and nucleic acids
- D. Urea and amino acids

**Answer: B**



**Watch Video Solution**

**8.** In his classic experiment on the formation of amino acids. Stanley Miller passed an electric discharge in a mixture of

Or

Stanley Miller has put the Oparin-Haldane theory to test in 1953 by creating in the laboratory, the probable condition of the primitive earth. In the experiment, simple amino acids were synthesized from which of the following mixture as observed after 18 days

A. Steam,  $CH_4$ ,  $H_2$  and  $NH_3$

B.  $CH_4$ ,  $CO_2$ ,  $O_2$  and  $H_2$

C.  $NH_3$ ,  $O_2$ ,  $H_2$  and steam

D.  $CH_4$ ,  $H_2$ ,  $N_2$  and steam

**Answer: A**



**Watch Video Solution**

9. The scientist related with the over throw or the "Theory of spontaneous generation" and experiments with swan-necked flasks is

A. Von Helmont

B. Louis Pasteur

C. Miller

D. Haeckel

**Answer: B**



**Watch Video Solution**

**10.** According to chemosynthetic generation theory, the sequence of origin of life may be considered as :



A. Amino acid-protein-chlorophyll

B. Chlorophyll-starch-glycogen

C. Nucleic acid-amino acid-chlorophyll

D. chloropyll-nucleic acid -amino acid

**Answer: A**



**Watch Video Solution**

**11.** The idea of spontaneous generation was first refuted by

A. L.Pasteur

B. L. Spallanzani

C. F. Redi

D. S.L. Miller

**Answer: C**



**Watch Video Solution**

**12.** The idea of Natural Selection as the fundamental process of evolutionary changes was reached

A. By Alfred Russel Wallace in 1901

B. Independently by Charles Darwin and  
Alfred Russel Wallace in 1859

C. Independently by Charles Darwin and  
Alfred Russel Wallace in 1990

D. By Charles Darwin in 1866

**Answer: B**



**Watch Video Solution**

**13.** Which one of the following is incorrect about the characteristics of protobionts (coacervates and microspheres) as envisaged in the abiogenic origin of life)

A. They were partially isolated from the surroundings

B. They could maintain an internal environment

C. They were able to reproduce

D. They could separated combinations of molecules from the surrounding

**Answer: C**



**Watch Video Solution**

**14. Abiogenesis means**

- A. Origin of life from non-living organisms
- B. Origin of life from living organisms
- C. Origin of viruses and microbes

D. None of these

**Answer: A**



**Watch Video Solution**

**15.** About how long ago was the earth formed

A. 4.6 billion years ago

B. 10 billion years ago

C. 3.0 billion years ago

D. 20 billion years ago

**Answer: A**



**Watch Video Solution**

**16.** Type of nutrition in the primitive cells

Or

It is believed that the organisms first inhabited earth's surface were

A. Heterotrophic or holozoic

B. Heterophytic or holophytic

C. Saprophytic

D. Saprozoic

**Answer: A**



**Watch Video Solution**

**17.** Louis Pasteur's view on the origin of life is that

A. Life originated within six days

B. Life originated spontaneously from the living organisms only



C. Life originated spontaneously from the non-living substances

D. Life came from each other planet

**Answer: B**



**Watch Video Solution**

**18.** First cell produced on earth is

A. Protobiont

B. Protozoa

C. Metazoa

D. None of these

**Answer: A**



**Watch Video Solution**

**19.** Select the correct statement from the following

A. Darwinian variations are small and directionless

B. Fitness is the end result of the ability to adapt and gets selected by nature

C. All mammals except whales and camels have seven cervical vertebrae

D. Mutations are random and directional

**Answer: B**



**Watch Video Solution**

20. The organism which appeared first on earth is known as

A. Eubiont

B. Probiont

C. Eobiont

D. True biont

**Answer: C**



**Watch Video Solution**

21. The concept of chemical evolution is based on

A. Crystallization of chemicals

B. Interaction of water, air and clay under intense heat

C. Effect of solar radiation on chemicals

D. Possible origin of life by combination of chemicals under suitable environmental conditions

**Answer: D**



Watch Video Solution

22. Which one of the following amino-acids was not found to be synthesized in Miller's experiment

A. Glutamic acid

B. Alanine

C. Glycine

D. Aspartic acid

**Answer: A**



Watch Video Solution

**23.** There is not life on moon because there is no

A. Carbon

B. Nitrogen

C. Water

D. Silicates

**Answer: C**



24. According to available evidence life evolved through the process of

- A. Abiogenesis
- B. Biogenesis
- C. Special creation
- D. Spontaneous generation

**Answer: A**





25. In the early earth, water and  $CO_2$  were produced by the combination of  $O_2$  with

A. Ammonia and methane

B. Hydrogen

C. Organic matter

D. Sulphates and nitrates

**Answer: A**



**Watch Video Solution**

**26.** The prebiotic atmosphere of the earth was of a reducing nature. It was transformed into an oxidizing atmosphere of present day to the emergence of

- A. Cyanobacteria
- B. Angiosperms
- C. Photosynthetic bacteria
- D. Eukaryotic algae

**Answer: A**



**Watch Video Solution**

27. Formation of which complex molecules was noticed by Urey and Miller when subjected substances like  $NH_3$ ,  $CH_4$ ,  $H_2O$  etc. to electric discharge

A. Aquaregia

B.  $H_2SO_4$

C.  $HCN$

D. Amino acids

**Answer: D**



**Watch Video Solution**

**28.** The idea that life origination from pre-existing life is referred as

- A. Biogenesis theory
- B. Special creation theory
- C. Abiogenesis theory
- D. Extraterrestrial theory

**Answer: A**



**Watch Video Solution**

**29.** Origin of life' was written by

A. Darwin

B. Oparin

C. Gray

D. Smith

**Answer: B**



Watch Video Solution

30. Coacervates are

A. Protobionts having

polysaccharide+protein +  $H_2O$

B. Protein aggregate

C. Protein and lipid aggregates

D. None of these

**Answer: A**



[Watch Video Solution](#)

31. The most vital process for the existence of life on earth is

- A. Communication in animals
- B. Photosynthesis by plants
- C. Reproduction in plants and animals
- D. Respiration in animals

**Answer: B**



[Watch Video Solution](#)

**32.** The four elements that make up 99% of all elements found in a living system are

A. H, O, C, N

B. C, H, O, S

C. C, H, O, P

D. C, N, O, P

**Answer: A**



**Watch Video Solution**



**33.** Which of the following is the correct sequence of chemical substance produced during the origin of life on the earth

A. Water. Amino acid, nucleic acid and enzyme

B. Glucose, amino acid, nucleic acid and protein

C. Amino acid, ammonium phosphate and nucleic acid

D. Ammonia, amino acid, protein and nucleic acid

**Answer: A**



**Watch Video Solution**

**34.** Which is responsible for origin on life

A. Spontaneous generation

B. Special creation

C. Catastrophy

D. Chemosynthesis

**Answer: D**



**Watch Video Solution**

**35.** Life originated in

A. Precambrian era

B. Proterozoic era

C. Mesozoic era

D. Caenozoic era

**Answer: A**



**Watch Video Solution**

**36. Origin of life took place in/on**

A. Water

B. Air

C. Mountains

D. Land

**Answer: A**



Watch Video Solution

37. The presence of salts (NaCl and others) in animal body fluid gives an inference that life originated in the

- A. Salt solution
- B. Rain water
- C. Primitive ocean
- D. None of the above

**Answer: C**



Watch Video Solution

38. According to one of the most accepted theory the earth atmosphere before any life had originated consisted of  $H_2O$ ,  $H_2$ ,  $NH_2$  and



D. None of these

**Answer: A**



**Watch Video Solution**

**39.** Under certain condition scientist have obtained cell-like structures. These are known as

A. Microbes

B. Protists

C. Coacervates

D. Prebiotic soup

**Answer: C**



**Watch Video Solution**

**40.** Chemical theory of origin of life was given

by

Or

Who proposed that the first form of life could

have come from pri-existing non living organic

molecules

A. Stanley Miller



B. Oparin and Haldane

C. Louis Pasteur

D. Spallanzani

**Answer: B**



**Watch Video Solution**

**41.** The abiogenesis occurred about how many billion years ago

A. 1.2 billion

B. 1.5 billion

C. 2.5 billion

D. 3.5 billion

**Answer: D**



**Watch Video Solution**

**42.** Theory of special creation was given by

A. Weismann

B. Helmont

C. Manpertuis

D. Father Saurez

**Answer: D**



**Watch Video Solution**

**43.** The spark-discharge apparatus to test chemical evolution of life was designed by

Or

The first experiment on chemical evolution and origin of life was carried out by

A. Oparin and Haldane

B. Miller and Urey

C. Jacob and Monad

D. Dixon and Jolley

**Answer: B**



**Watch Video Solution**

**44.** Coacervates are

A. Colloid droplets

B. Contain nucleoprotein

C. Both (a) and (b)

D. Protobiont

**Answer: C**



**Watch Video Solution**

**45.** Theory of catastrophism was supported by

A. Louis Pasteur

B. A.I. Oparin

C. Cuvier

D. Haldane

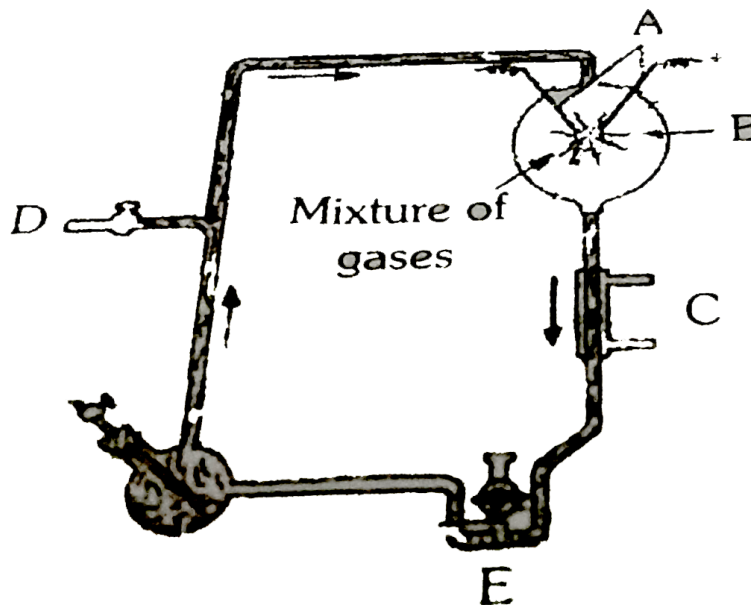
**Answer: C**



**Watch Video Solution**

**46.** The diagram represents Miller's experiment. Choose the correct combination

of labelling



A. A-electrodes,

$B - NH_3 + H_2 + H_2O + CH_4$ , C-cold

water, D-vacuum, E-U trap

B. A-electrodes,



water, D-vacuum, E-U trap

C. A-electrodes,  $B - NH_3 + H_2O$ , C-hot

water, D-tap, E-U trap

D. A-electrodes,



C-steam, D-vacuum, E-U trap

**Answer: A**



**Watch Video Solution**



**47.** Coacervates were experimentally produced  
by

A. Urey and Miller

B. Jacob and Monod

C. Fischer and Huxley

D. Sidney Fox and Oparin

**Answer: D**



**Watch Video Solution**

**48.** Synthesis of amino acids to prove that amino acids were formed in primitive ocean was experimentally proved by

Or

Who performed an experiment to prove that organic compounds were the basis of life

A. Sydney Fox

B. Oparin

C. Haldane

D. Stanley Miller

**Answer: D**



**Watch Video Solution**

**49.** Big bang theory was proposed by

A. Kant

B. Lemaitre

C. K.Bahadur

D. Weismann

**Answer: B**



Watch Video Solution

50. Gases found in primitive atmosphere are

A.  $CH_4$ ,  $NH_3$ ,  $H_2$ ,  $H_2O$

B.  $CH_4$ ,  $NH_3$ ,  $CO_2$ ,  $H_2O$

C.  $CH_4$ ,  $H_2O$ ,  $CO_2$

D.  $CH_2$ ,  $O_2$ ,  $CO_2$

**Answer: A**



Watch Video Solution

51. The most accepted and recent theory of organic evolution

A. Natural selection theory

B. Phase theory

C. Synthetic theory

D. Mutation theory

**Answer: C**



**Watch Video Solution**

52. A population will not exist in Hardy-Weinberg equilibrium if

- A. There are no mutations
- B. There is no migration
- C. The population is large
- D. Individuals mate selectively

**Answer: D**



**Watch Video Solution**

53. The greatest evolutionary change enabling the land vertebrates to be completely free from water , was the development of

A. Four legs

B. Lungs

C. Shelled eggs and internal fertilization

D. Four chambered heart

**Answer: C**



**Watch Video Solution**

54. Haeckel's theory of recapitulation (Biogenetic law) means that

- A. All organisms start as an egg
- B. Life history of an animal reflects its evolutionary history
- C. Progeny of an organism resembles its parents
- D. Body parts one lost are regenerated

**Answer: B**



**Watch Video Solution**



55. Evolution of different species in a given area starting from a point and spreading to other geographical areas is known as

- A. Adaptive radiation
- B. Natural selection
- C. Migration
- D. Divergent evolution

**Answer: A**



[Watch Video Solution](#)

56. There was no life in

- A. Azoic era
- B. Mesozoic era
- C. Palaeozoic era
- D. Cenozoic era

**Answer: A**



[Watch Video Solution](#)

57. Occurrence of endemic species in South America and Australia is due to

- A. Extinction of these species from other regions
- B. Continental separation
- C. Absence of terrestrial route to these places
- D. Retrogressive evolution

**Answer: B**



Watch Video Solution

58. The origin of mammal like reptiles occurred in

- A. Triassic period
- B. Permian period
- C. Jurassic period
- D. Tertiary period

**Answer: B**



Watch Video Solution

59. Another term for adaptive evolution is

- A. Clinal change
- B. Microevolution
- C. Macro-evolution
- D. Speciation

**Answer: B**



**Watch Video Solution**

60. The first life on earth came in water and evidences indicate that life originated in one of the following eras

A. Palaeozoic

B. Mesozoic

C. Cenozoic

D. Proterzoic

**Answer: D**



**Watch Video Solution**

61. Mutations which normally happen randomly are considered one of the materials for evolution because they

A. Are stable

B. Contribute to new variation in organism

C. Cause death of organism

D. None of these

**Answer: B**



**Watch Video Solution**

62. Which epoch is of human civilization

A. Pliocene

B. Holocene

C. Palaeocene

D. Pleistocene

**Answer: B**



**Watch Video Solution**



**63.** Which one of these was a flying dinosaur

A. Triceratops

B. Tyrannosaurus

C. Stegosaurus

D. Pteranodon

**Answer: D**



**Watch Video Solution**

**64.** Now unit of evolution is called

A. Population

B. Genus

C. Order

D. Species

**Answer: A**



**Watch Video Solution**

**65.** The major cause of evolution of genes and protein is

A. Point mutation

B. Chromosomal aberration

C. Sexual reproduction

D. Gene duplication and divergence

**Answer: A**



**Watch Video Solution**

66. Recapitulation theory (Biogenetic law) explains "Ontogeny repeats Phylogeny". It was given by

- A. Lamarck
- B. Haeckel
- C. Darwin
- D. Robert Hooke

**Answer: B**



**Watch Video Solution**

**67.** Goldschmidt has classified evolution into micro, macro, and mega evolution. Which one of the following is referred to as micro-evolution

- A. Evolution at variety level
- B. Evolution at sub species level
- C. Evolution at species and genus level
- D. Evolution at family level

**Answer: B**



**Watch Video Solution**

**68.** The pioneers in the field of 'organic evolution' are

A. Karl landsteiner, Huga de Vries, Malthus

B. Darwin, Hugo de Vries, Lamarck, Huxley

C. Lamarck, Karl landsteiner, Malthus  
deVries

D. Darwin, Lamarck, Karl landsteiner,  
deVries

**Answer: B**



**Watch Video Solution**

**69.** A common means of sympatric speciation is

A. Polyploidy

B. Temporal segregation of breeding season

C. Spatial segregation of mating sites

D. Imposition of geographic barrier

**Answer: B**



**Watch Video Solution**

**70.** A star fish with six arms may be a case of

A. Variation

B. Evolution

C. Autotomy

D. Mutation



**Answer: A**



**Watch Video Solution**

71. Which of the following variations are temporary and have nothing to do with the last or next generation

- A. Hereditary variations
- B. Discontinuous variations
- C. Environmental variations
- D. None of these

**Answer: C**



**Watch Video Solution**

**72. Sibling species are also known as**

- A. Sub species
- B. Genus
- C. Subline species
- D. Biological races

**Answer: D**



**Watch Video Solution**

**73.** Closely related varying different in trait expresses

A. Convergent evolution

B. Divergent evolution

C. Parallel evolution

D. None of these

**Answer: C**



74. Which one of the following is not important for evolution

- A. Mutation
- B. Recombination
- C. Genetic drift
- D. Somatic variation

**Answer: D**



**75.** The basic unit of animal population which is communal interbreeding, in a species is known as

A. Cline

B. Sun-species

C. Sibling species

D. Deme

**Answer: D**



**Watch Video Solution**

76. One of the important consequences of geographical isolation is

A. No change in the isolated fauna

B. Preventing Speciation

C. Speciation through reproductive isolation

D. Random creation of new species

**Answer: C**



Watch Video Solution

77. Which is not a pre-zygotic isolation mechanism

A. Geographical isolation

B. Ecological isolation

C. Seasonal isolation

D. Hybrid sterility

**Answer: D**



Watch Video Solution

**78.** An evolutionary process giving rise to new species adapted to new habitats and ways of life is called

A. Adaptive radiation

B. Atavism

C. Reversion

D. Genetic drift

**Answer: A**





79. Evolution means

A. History of race

B. Development of race

C. History and Development of race with variations

D. Progressive development of the race

**Answer: C**



**80.** Inclusive fitness theory is proposed by

A. Darwin

B. Lamarck

C. Weismann

D. Hamilton

**Answer: D**



**Watch Video Solution**

**81.** The principle that gives the geneticists a tool to determine when evolution is occurring is

- A. Chemiosmotic theory
- B. Hardy- Weinberg principle
- C. Malthusian principle
- D. Cloning theory

**Answer: B**



**Watch Video Solution**

**82.** The Hardy-Weinberg principle cannot operate if

A. The population is very large

B. Frequent mutation occur in the population

C. The population has no chance of interaction with other populations

D. Free interbreeding occurs among all members of the population

**Answer: B**



**Watch Video Solution**

**83.** Which one of the following is not a living fossil

Or

Missing link in evolution is

A. Archaeopteryx

B. Peripatus

C. King crab

D. Sphenodon

**Answer: A**



**Watch Video Solution**

**84.** Inorganic evolution means

A. Formation of molecules

B. Formation of cell

C. Evolution of new species

D. Same as organic evolution

**Answer: A**



**Watch Video Solution**

**85.** Most modern breed of the domestic dog have evolved as a result of

- A. Natural selection
- B. Artificial selection
- C. Sexual selection
- D. Reproductive isolation

**Answer: B**



**Watch Video Solution**

**86.** Read the following statements and choose the correct option

A. Increase in melanized moths after industrialization in Great Britain is a proof for natural selection

B. When more individuals of a population acquire a mean character value, it is called disruption



C. Changes in allelic frequency in a population will lead to Hardy Weinberg equilibrium

D. Genetic drift changes the existing gene ot allelic frequency in future generations

A. B alone is correct

B. D alone is correct

C. A and D alone are correct

D. A and C alone are correct

**Answer: C**



**Watch Video Solution**

**87.** A mutation from the wild to a new type is called

- A. Reverse mutation
- B. Frame-shift mutation
- C. Gibberish mutation
- D. Forward mutation

**Answer: D**



**Watch Video Solution**

**88.** Ultimate source of organic variation is the process which provide raw materials for evolution is

Or

The concept of sudden genetic change which breeds true in a species is represented as

A. Sexual reproduction

B. Meiosis

C. Mutation

D. Independent assortment

**Answer: C**



**Watch Video Solution**

**89.** Genetic species concept was given by

- A. Lamarck
- B. Lotsy
- C. Ernst Mayr
- D. Linnaeus

**Answer: B**



Watch Video Solution

90. Which era is dubbed as the age of prokaryotic microbes

A. Phanerozoic

B. Proterozoic

C. Precambrian

D. Archean

**Answer: C**



91. The presence of gill slits in the embryos of all vertebrates support the theory of

- A. Recapitulation
- B. Organic evolution
- C. Metamorphosis
- D. Biogenesis

**Answer: A**



92. Which of the following pairs is correctly matched

A. Streamlined body-Aquatic adaptation

B. Excessive perspiration-Xerophytic adaptation

C. Parasitism-Intra-specific relationship

D. Uricotelism-Aquatic habitat

**Answer: A**



**Watch Video Solution**

93. As per modern synthetic theory organic evolution depends upon

A. Mutation, reproductive isolation and natural selection

B. Gene recombination and natural selection

C. Mutation and natural selection

D. All of these



**Answer: D**



**Watch Video Solution**

**94. H.J. Muller was awarded Nobel Prize for**

- A. Discovering that ionising radiations can cause mutation
- B. Gene mapping in *Drosophila*
- C. Reduction in nuclear weapons

D. Discovered that chemicals can cause gene mutation

**Answer: A**



**Watch Video Solution**

**95.** Evolution in which the animals of two different gene ecology show too much similarity with one another, as a result of adaptation is termed as

Or

Similarity developed in distantly related groups as an adaptation to the same function is called

- A. Parallel evolution
- B. Retrogressive evolution
- C. Progressive evolution
- D. Convergent evolution

**Answer: D**



**Watch Video Solution**

**96.** Biological species concept emphasizes on

A. Geographical isolation

B. Reproductive isolation

C. Physiological isolation

D. None of these

**Answer: B**



**Watch Video Solution**

97. Mutations are mainly responsible for controlling

- A. Increasing populations rate
- B. Maintaning genetic continuity
- C. Variation in organisms
- D. Extinction of organisms

**Answer: C**



**Watch Video Solution**

98. The alien species introduced into Lake Victoria that was responsible for the extinction of cichlid fishes is

- A. African catfish
- B. Water hyacinth
- C. Carrot grass
- D. Nile perch

**Answer: D**



**Watch Video Solution**

99. Single step large mutation leading to speciation is also called

- A. Founder effect
- B. Saltation
- C. Branching descent
- D. Natural selection

**Answer: B**



**Watch Video Solution**

**100.** Geographic and reproductive isolation are most closely associated with

Or

The origin of species from pre-existing species is

- A. Speciation
- B. Extinction
- C. Over production
- D. Competition

**Answer: A**





Watch Video Solution

**101.** A species is produced by loss or disappearance of a few characters found in parents it is termed as

- A. Progressive species
- B. Retrogressive species
- C. Successive species
- D. Digressive species

**Answer: B**



Watch Video Solution

**102.** Which one of the following scientists is not related with organic evolution

A. Erasmus Darwin

B. Charles Darwin

C. Darlington

D. T.R. Malthus

**Answer: C**



**103.** According to the theory of mutation by Hugo de Vries

A. Only small mutation takes part in variation

B. Only large mutation takes part in variation

C. Both small and large mutation cause variation in species

D. None of the above

**Answer: C**



**Watch Video Solution**

**104.** Which is basis of evolution

A. Cell

B. Individual

C. Population

D. Species

**Answer: D**



**Watch Video Solution**

**105.** The example of recapitulation theory is

- A. Embryonic membranes of reptiles
- B. Tadpole larva of frog
- C. Placenta of mammals
- D. Canine teeth of dog

**Answer: B**



Watch Video Solution

**106.** The importance of random accumulation of small genetic changes sufficient to explain evolution

A. Haeckel

B. Mayr

C. Darwin

D. Lamarck

**Answer: B**



Watch Video Solution

**107.** The principle of organic evolution envisages

A. No change in complexity

B. Decreasing complexity

C. Increasing complexity

D. Drastic changes

**Answer: C**



**108.** Radiations with successful adaptations in case of insects is a result of

- A. Genetic divergence
- B. Micro-evolution
- C. Macro-evolution
- D. Mega-evolution

**Answer: C**





**109.** Finding of miller's experiment on origin of life has provided evidence for the

- A. Theory of special creation
- B. Theory of organic evolution
- C. Theory of biogenesis
- D. Theory of abiogenesis

**Answer: B**



**Watch Video Solution**

**110.** What is evolution

- A. Development of DNA from nucleotides
- B. Development of organism through time
- C. Development of a cell from chemicals
- D. None of these

**Answer: B**



**Watch Video Solution**

## 111. Abiogenetic theory of origin states

A. Spontaneous generation

B. Organic evolution due to chemical reaction

C. Origin of life due to pre-existing organisms

D. Origin of life from blue green algae

**Answer: A**



**Watch Video Solution**

**112.** Evolutionary convergence is characterized by

A. Development of characteristics by random mating

B. Replacement of common characteristics in different group

C. Development of dissimilar set of characteristics in related groups

D. Development of a common set of characteristics in group of different ancestry

**Answer: D**



**Watch Video Solution**

**113.** Which of the following is related with reproductive isolation

A. Genetic isolation

B. Temporal isolation

C. Behavioural isolation

D. All of these

**Answer: D**



**Watch Video Solution**

**114.** The existence of marsupials in Australia and New Zealand prove

A. Genetic drift

B. Geological period

C. Continental drift

D. Both (b) and (c)

**Answer: D**



**Watch Video Solution**

**115.** The life beings above which level

A. Molecule

B. Amino acids

C. Mixture

D. Compound

**Answer: B**



**Watch Video Solution**

**116.** In Hardy-Weinberg equation, the frequency of heterozygous individual is represented by

A.  $q^2$



B.  $p^2$

C.  $2pq$

D.  $pq$

**Answer: C**



**Watch Video Solution**

**117.** According to Hugo de Vries, the mechanism of evolution is

A. Multiple step mutations

B. Saltation

C. Phenotypic variations

D. Minor mutations

**Answer: B**



**Watch Video Solution**

**118.** The first seed plants appeared during

A. Silurian era

B. Devonian era

C. Carboniferous era

D. Cretaceous era

**Answer: B**



**Watch Video Solution**

**119.** The wings of a bird and the wings of an insect are

A. Analogous structures and represent convergent evolution

B. Phylogenetic structures and represent  
divergent evolution

C. Homologous structures and represent  
convergent evolution

D. Homologous structures and represent  
divergent evolution

**Answer: A**



**Watch Video Solution**

**120.** Homologous organs explain

A. Convergent evolution

B. Divergent evolution

C. Pedogenesis

D. Prodigality

**Answer: B**



**Watch Video Solution**

**121.** Below are listed some pairs of characters.

The homologous pair is

- A. Forelimbs of dog and camel
- B. Insect wing and bat wing
- C. Feathers of birds and fins of fish
- D. Lens of vertebrate and arthropod

**Answer: A**



**Watch Video Solution**

122. Which is a vestigial organ of python

A. Nose

B. Hind limbs

C. Scales

D. Teeth

**Answer: B**



**Watch Video Solution**

**123.** The formation of two species from one ancestral species is known as

A. Convergent evolution

B. Phyletic evolution

C. Allopatry

D. Divergent evolution

**Answer: D**



**Watch Video Solution**



124. Which one is not a vestigial organ in man

A. Vermiform appendix

B. Plica semilunaris

C. Ear muscles

D. Malleus

**Answer: D**



**Watch Video Solution**

125. The humming bird, hawk and the humming moth illustrate

Or

What is common to whale seal and shark

- A. Adaptive radiation
- B. Homology
- C. Convergent evolution
- D. Divergent evolution

**Answer: C**



Watch Video Solution

126. Which one of the following options gives one correct example each of convergent evolution and divergent evolution

	<b>Convergent evolution</b>	<b>Divergent evolution</b>
(a)	Eyes of octopus and mammals	Bones of forelimbs of vertebrates
(b)	Thorns of Bougainvillia and tendrils of Cucurbita	Wings of butterflies and birds
(c)	Bones of forelimbs of vertebrates	Wings of butterfly and birds
(d)	Thorns of Bougainvillia and tendrils of Cucurbita	Eyes of Octopus and mammals



Watch Video Solution

127. Which one illustrates palaeontological evidence in favour of organic evolution

A. Duck billed platypus

B. Pappered moth

C. Archaeopteryx

D. Darwin's finches

**Answer: C**



**Watch Video Solution**

**128.** Which of the following is the earliest era

A. Coenozoic

B. Mesozoic

C. Paleozoic

D. Pre-cambrian

**Answer: C**



**Watch Video Solution**

**129.** Mass extinction at the end of Mesozoic era was probably due to

A. Continental drift

B. The collisions of earth with large meteorities

C. Massive glaciations

D. Change in earth's orbit

**Answer: B**



**Watch Video Solution**

**130.** The age of rock is calculated on the basis of

- A. Types of fossils present
- B. Number of strata present
- C. Amount of uranium present
- D. Amount of lead present

**Answer: D**



**Watch Video Solution**

**131.** Which one of the following sets includes all homologous organs

A. Hind legs of pig, duck and kangaroo

B. Wings of bats, butterfly and bird

C. Sting of honey bee, scorpion and snake

D. Tail of rat, peacock and cockroach

**Answer: A**



**Watch Video Solution**



**132.** Fossils are dated now by

- A. Stratigraphic position
- B. Amount of calcium residue
- C. Association with other animals
- D. Radioactive carbon ( $C^{14}$ ) contents

**Answer: D**



**Watch Video Solution**

**133.** Which one of the following are analogous structures

- A. Thoms of Bougainvillea and tendrils of Cucurbita
- B. Flipper of dolphin and legs of horse
- C. Wings of bat and wings of pigeon
- D. Gills of prawn and lungs of man

**Answer: C::D**



**Watch Video Solution**

**134.** Homologous organs are

A. Leg of man, leg of horse, wing of bat

B. Hand of man, tail of horse, wing of bat

C. Hand of man, forelimb of horse, wing of bat, whale's flippers

D. Head of man, leg of horse, wing of bat

**Answer: C**



**Watch Video Solution**

**135.** Which one of the following groups are not analogous organs

A. Wings of birds and wings of butterfly

B. Eye of octopus and eye of mammals

C. Flippers of penguin and flippers of  
dolphin

D. Thorns of bougainvillea and tendrils of  
Cucurbita

**Answer: D**



Watch Video Solution

**136.** Amphibians were dominant during

A. Carboniferous

B. Silurian

C. Ordovician

D. Cambrian

**Answer: A**



Watch Video Solution

**137.** Evolution of unicellular organism was in the era

A. Proterozoic

B. Palaeozoic

C. Archaeozoic

D. Mesozoic

**Answer: C**



**Watch Video Solution**

**138.** Origin of first toothed birds and gymnoperms took place during

A. Cretaceous

B. Triassic

C. Jurassic

D. Permian

**Answer: C**



**Watch Video Solution**

**139.** Wings of birds and forelimbs of horse are \_\_\_\_\_ organs

A. Analogous

B. Homologous

C. Vestigial

D. None of these

**Answer: B**



**Watch Video Solution**



**140.** Earliest reptiles evolved in the period

- A. Ordovician
- B. Silurian
- C. Devonian
- D. Carboniferous

**Answer: A**



**Watch Video Solution**

**141.** First mammals appeared in the period

A. Triassic

B. Jurassic

C. Cretaceous

D. Tertiary

**Answer: A**



**Watch Video Solution**

**142.** Which of the following are homologous organs

A. Wings of Birds and Locust

B. Wings of Bat and Butterfly

C. Leg of Cockroach and fog

D. Wings of Birds and pactoral fins of fish

**Answer: D**



**Watch Video Solution**

**143.** Man evolved in

A. Triassic period

B. Jurassic

C. Permian period

D. Pliocene

**Answer: D**



**Watch Video Solution**

**144.** Which one of the following in birds, indicated their reptilian ancestry

- A. Two special chamber crop and gizzard in their digestive tract
- B. Eggs with a calcareous shell
- C. Scales on their hind limbs
- D. Four chambered heart

**Answer: C**



**Watch Video Solution**

**145.** Connecting link between annelida and mollusca is

A. Neopilina

B. Nautilus

C. Glochidium larva

D. Veliger larva

**Answer: A**



**Watch Video Solution**

**146.** Forelimbs of cat, lizard used in walking, forelimbs of whale used in swimming and forelimbs of bats used in flying are an example of

- A. Homologous organs
- B. Convergent evolution
- C. Analogous organs
- D. Adaptive radiation

**Answer: A**



**Watch Video Solution**

147. Which one of the following periods is largely associated with extinction of dinosaurs and the increase in flowering plants and reptiles

A. Jurassic

B. Triassic

C. Cretaceous

D. Permian

**Answer: C**





Watch Video Solution

**148.** Organs that have different embryonic origin but perform similar functions are

A. Homologous organs

B. Analogous organs

C. Vestigial organs

D. Atavism

**Answer: B**



Watch Video Solution

**149.** Role of isolation in evolution is

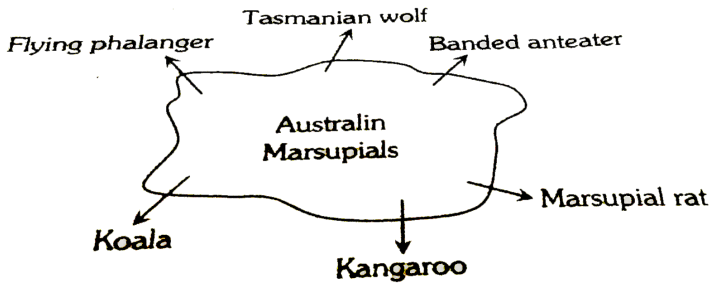
- A. Differentiation of species
- B. Maintenance of species
- C. Evolutionary divergence
- D. Extermination of species

**Answer: C**



**Watch Video Solution**

150. The given figure shows an example of



- A. Divergent revolution
- B. Recapitulation
- C. Parallel evolution
- D. Convergent evolution

**Answer: A**



**Watch Video Solution**

**151.** Which one is not a true fossil

A. Placoderm

B. Limulus

C. Archeopteryx

D. Therapside

**Answer: B**



**Watch Video Solution**

**152.** Tendril of Cucurbita & thorns of Bougainvillea are

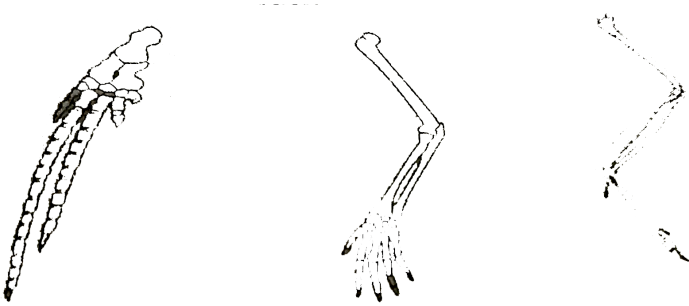
- A. Vestigial organ
- B. Analogous organs
- C. Homologous organ
- D. None of these

**Answer: C**



**Watch Video Solution**

153. The following structures shows that



- A. They have nothing to do with each other
- B. They are analogous
- C. They are vestigial structures
- D. They are homologous

**Answer: D**



**Watch Video Solution**

**154.** A living connective link which provides evidence for organic evolution

A. Archaeopteryx between reptiles and mammals

B. Lung fish between pisces and reptiles

C. Duck bill platypus between reptiles and mammals

D. Sphenodon between reptiles and birds

**Answer: C**



**Watch Video Solution**

**155.** The splint bone of present day horse is a vestige of

A. Fourth toe

B. First toe

C. Second toe

D. Second and fourth toes in limbs



**Answer: D**



**Watch Video Solution**

**156.** Vestigial organs occur as

- A. Useless because of incomplete development
- B. Inefficient parts
- C. fully developed but useless
- D. Analogous

**Answer: A**



**Watch Video Solution**

**157.** Occurrence of vestigial organs is not explained by

- A. Theory of organic evolution
- B. Theory of special creation
- C. Scala naturae
- D. Natural classification system

**Answer: B**



**Watch Video Solution**

**158.** Vestigial pelvic girdle and bones of hind limbs are the characteristic of

A. Whales

B. Dolphins

C. Sharks

D. Seal

**Answer: A**



**Watch Video Solution**

**159.** Variation in gene frequencies within populations can occur by chance rather than by natural selection. This is referred to as

Or

Random unidirectional change in allele frequencies that occur by chance in all population and especially in small populations is known as

A. Genetic load

B. Genetic flow

C. Genetic drift

D. Random mating

**Answer: C**



**Watch Video Solution**

**160.** Which one of the following sets of structure includes only analogous organs

A. Wings of butterfly, housefly and bat

B. Hind legs of horse, grasshopper and bat

C. Hands of man, monkey and kangaroo

D. Mandibles of cockroach, mosquito and  
honey bee

**Answer: A**



**Watch Video Solution**

**161.** Which of the following is commonly called "age of mammals and birds"

A. Mesozoic

B. Coenozoic

C. Palaeozoic

D. Azoic

**Answer: B**



**Watch Video Solution**

**162.** The eye of octopus and eye of cat show different patterns of structure, yet they perform similar function. This is an example of

A. Analogous organs that have evolved due to divergent evolution

B. Homologous organs that have evolved due to convergent evolution

C. Homologous organs that have evolved due to convergent evolution



D. Analogous organs that have evolved due to convergent evolution

**Answer: D**



**Watch Video Solution**

**163.** Appearance of ancestral characters in the new borns, such as tail, monstral face, gill slits, multiple mammae etc. are known as

Or

Presence of tail in a child is an example of

A. Homologous

B. Analogous

C. Atavism

D. Vestigial

**Answer: C**



**Watch Video Solution**

**164.** Which one is not a vestigial organ

A. Wings of Kiwi

B. Coccyx in man

C. Pelvic girdle of Python

D. Flipper of seal

**Answer: D**



**Watch Video Solution**

**165.** Basic principles of embryonic development were stated by

A. Von Baer

B. Haeckel

C. Darwin

D. Weismann

**Answer: A**



**Watch Video Solution**

**166.** Parallelism is

A. Adaptive divergence in evolution

B. Adaptive convergence of widely different species in evolution

C. Adaptive convergence of closely related species in evolution

D. None of these

**Answer: C**



**Watch Video Solution**

**167.** Allopatric speciation is due to

A. Mutation

B. Geographical separation of populations

C. Migration of member of a species from  
one to other populations

D. Hybridization between closely related  
species

**Answer: B**



**Watch Video Solution**

**168.** Correct sequence is

A. Palaeozoic → Mesozoic → Coenozoic

B. Mesozoic → Archaeozoic →

Proterozoic

C. Palaeozoic → Archaeozoic →

Coenozoic

D. Archaeozoic → Palaeozoic →

Proterozoic

**Answer: A**

---



[Watch Video Solution](#)

**169.** Vestigial organ in man is

- A. Extra-abdominal muscles
- B. Thumb
- C. Conjunctiva
- D. Body hairs

**Answer: D**



[Watch Video Solution](#)



**170.** Fossil X is older than fossil Y. Most evident answer is

A. Fossil Y has got some of the vestigial organs which are functional in X

B. Fossil Y has got homologous and analogous organs of fossil X

C. Fossil X is found in deeper sedimentation than Y

D. Fossil Y was found in better state than that of X

**Answer: A**



**Watch Video Solution**

**171.** Age of fossils in the past was generally determined by radiocarbon method and other methods involving radioactive elements found in the rocks. More precise methods, which were used recently and led to the revision of

the evolutionary periods for different groups of organisms, includes

A. Electron spin resonance (ESR) and fossil

DNA

B. Study of carbohydrates/proteins in rocks

C. Study of carbohydrates/proteins in

fossils

D. Study of conditions of fossilization

**Answer: A**



**Watch Video Solution**

172. Living fossil is

A. Latimeria

B. Uromastix

C. Archaeopteryx

D. All the above

**Answer: A**



**Watch Video Solution**

**173.** Two or more species occupying identical or overlapping areas are known as

- A. Sympatric species
- B. Allopatric species
- C. Sibling species
- D. Polytypic species

**Answer: A**



**Watch Video Solution**

**174.** The earliest site where human civilization and crop cultivation started was presumably:

A. Around Caspian and Mediterranean seas

B. Around river Nile

C. Chinese river valley

D. All of these

**Answer: A**



**Watch Video Solution**

**175.** Jurassic period of the Mesozoic era is characterised by

A. Dinosaurs become extinct and angiosperms appear

B. Flowering plants and first dinosaurs appear

C. Gymnosperms are dominant plant and first birds appear

D. Radiation of reptiles and origin of mammal-like reptiles

**Answer: C**



**Watch Video Solution**

**176.** The rocks that contain fossil are

Or

The fossil are preserved in

A. Metamorphic rocks

B. Igneous rocks

C. Sedimentary rocks

D. All the above



**Answer: C**



**Watch Video Solution**

**177.** Convergent evolution is illustrated by

- A. Dogfish and whale
- B. Rat and dog
- C. Bacterium and protozoan
- D. Starfish and cuttle fish

**Answer: A**



Watch Video Solution

**178.** Analogous organs have arisen in the evolutionary process through

A. Recombination

B. Mutation

C. Hybridisation

D. Adaptation

**Answer: D**



**179.** Presence of gills in the tadpole of frog indicates that

- A. Frogs will have gills in future
- B. Frogs evolved from gilled ancestors
- C. Fishes were amphibious in the past
- D. Fishes evolved from frog-like ancestors

**Answer: B**



**180.** Distribution in space is called

- A. Geological distribution
- B. Geographical distribution
- C. Zoological distribution
- D. Cosmos distribution

**Answer: D**



**Watch Video Solution**

**181.** Which of the following were abundant in mesozoic era

Or

Birds are evolved from

A. Mammals

B. Reptiles

C. Insects

D. Fishes

**Answer: B**



**Watch Video Solution**

**182.** Two zoogeographical regions separated by high mountain ranges are

- A. Palaearctic and Oriental
- B. Oriental and Australian
- C. Nearctic and Palaearctic
- D. Beotropical and Ethiopian

**Answer: A**



**Watch Video Solution**

**183.** Which of the following is connecting link showing organic evolution

A. Plumnaeus

B. Pontobdella

C. Macropus

D. Peripatus

**Answer: D**



**Watch Video Solution**

**184.** Being all mammals, whale, dolphins, bat, monkey and horse have some common character but they also show conspicuous differences. This is due to phenomenon of

- A. Normalisation
- B. Genetic drift
- C. Convergence
- D. Divergence

**Answer: D**



**Watch Video Solution**



**185.** The study of fossil is called

Or

The field in which zoology and geology are very intimately connected, is

Or

Existence of coal/petroleum can be known from the study of

A. Herpatology

B. Cytology

C. Palaeontology

## D. Organic evolution

**Answer: C**



**Watch Video Solution**

**186.** A species is taxonomically

A. A group evolutionary related

populations

B. A population with common

characteristics as evolutionary base of

variation

C. A fundamental unit in the phylogenetic history of organisms

D. A basic category to which most taxonomic information is attached

**Answer: C**



**Watch Video Solution**

**187.** The earliest fossil form in the phylogeny of horse is

A. Merychippus

B. Eohippus

C. Equus

D. Mesohippus

**Answer: B**



**Watch Video Solution**

**188.** Which one of the following is a pair homologous organs

A. Lungs of rabbit and gills of rohu

B. Wings of bat and wing of butterfly

C. Pectoral fin of rohu and the forelimb of horse

D. Wing of grasshopper and wing of crow

**Answer: C**



**Watch Video Solution**

**189.** Which is not true Archaeopteryx

A. Jaws are modified into beak

B. Tail is bony and long

C. Fore limbs are modified into wings

D. Connecting link between birds and mammals

**Answer: D**



**Watch Video Solution**

**190.** Who discovered the fossil of archaeopteryx from bavaria (Germany)

- A. Thomas Huxley
- B. Hermann von Meyer
- C. Colin Harrison
- D. Andreas Wagner

**Answer: D**



**Watch Video Solution**

**191.** Vestigeal organ in human being is

A. Incisor

B. Canines

C. Molar

D. Premolar

**Answer: C**



**Watch Video Solution**



**192.** Fossil found in Mandla district of MP is

A. 260 million years old

B. 100 million years old

C. 50 million years old

D. 20 million years old

**Answer: B**



**Watch Video Solution**

**193.** Which is connecting link between Reptiles and Aves

A. Archaeopteryx

B. Peripatus

C. Ornithorynchus

D. Loligo

**Answer: A**



**Watch Video Solution**

**194.** Analogous structures are a result of

- A. Divergent evolution
- B. Convergent evolution
- C. Shared ancestry
- D. Stabilizing selection

**Answer: A**



**Watch Video Solution**

**195.** The wings of an insect and a bat exhibit

A. Homology

B. Analogy

C. Atavism

D. Connecting link

**Answer: B**



**Watch Video Solution**

**196.** Which of the following are homologous organs

- A. Wings of bird and wings of insect
- B. Wings of bat and wings of cockroach
- C. Wings of bird and hands of human
- D. Nails of human being and claws in animals

**Answer: C**



**Watch Video Solution**

**197.** Which of the following is vestigial organ in humans

- A. Muscles of ear pinna
- B. Nictitating membrane
- C. Mammary glands in males
- D. All of the above

**Answer: D**



**Watch Video Solution**

**198.** Which is incorrect

- A. Wings of insect and birds are analogous
- B. Wings of insects and bats are analogous
- C. Wings of insects and birds are homologous
- D. Wings of bats and birds are homologous

**Answer: C**



**Watch Video Solution**

**199.** Deviation of homologous are caused by

- A. Time consequence along
- B. Gradual changes in structure
- C. Drastic changes in structure
- D. No changes in structure

**Answer: B**



**Watch Video Solution**



**200.** The term for similarity in organ structure seen in great diversity is

Or

The similarity of bone structure in the forelimbs of many vertebrates is an example on

- A. Homology
- B. Convergent evolution
- C. Analogy
- D. Adaptive radiation

**Answer: A**



**Watch Video Solution**

**201.** Which one of the following is a living fossil

A. Sphenodon

B. Heloderma

C. Rabbit

D. Frog

**Answer: A**



**Watch Video Solution**

**202.** Fossil are studied for

A. Tracing evolutionary history of organisms

B. Studying extinct organisms

C. Providing jobs to scientist

D. Both 'a' and 'b'

**Answer: D**



**Watch Video Solution**

**203.** Two organs which are similar in structure and origin, but not necessarily in function are called

Or

The organs of different species that are related to each other through common descent though becomes functionally different are called

A. Homologous

B. Analogous

C. Apocrine

D. None of these

**Answer: A**



**Watch Video Solution**

**204.** Wings of pigeon, mosquito and bat show

A. Atavism

B. Mutation

C. Divergent evolution

D. Convergent evolution

**Answer: D**



**Watch Video Solution**

**205.** Peripatus is known as a connecting link, because it has the characters of both

A. Aves and Fishes

B. Reptiles and Birds

C. Fishes and Amphibians

D. Arthropoda and Annelids

**Answer: D**



**Watch Video Solution**

**206.** Which of the following is the most evident source of evolution

A. Fossils

B. Embryos

C. Morphology

D. Vestigeal organs

**Answer: A**



**Watch Video Solution**

**207.** Which of the following is not vestigeal in human

A. Coccyx



B. Nail

C. Third molar

D. Abdomen

**Answer: B**



**Watch Video Solution**

**208.** Ancestral amphibians were tetrapods that evolved during

A. Jurassic period

B. Cretaceous period

C. Devonian period

D. Carboniferous period

**Answer: C**



**Watch Video Solution**

**209.** Examples of vestigial organs in the human body are

A. Wisdom tooth, coccyz, vermiform appendix, nail

B. Coccyx , wisdom tooth

C. Coccyx, vermiform appendix, wisdom tooth, pancrease

D. Auricular muscles, coccyx, nail wisdom tooth

**Answer: B**



**Watch Video Solution**

**210.** The dinosaurs were maximum during the period of

A. Jurassic (Mesozoic)

B. Triassic

C. Cretaceous

D. Palaeocene

**Answer: A**



**Watch Video Solution**

**211.** Archeopteryx a transitional fossil between birds and reptiles was discovered from the rocks of following period

- A. Jurassic
- B. Archeozoic era
- C. Cretaceous
- D. Triassic

**Answer: A**



**Watch Video Solution**

**212.** In term of evolutionary origin, which one of the following is correct

- A. Birds are closer to mammals
- B. Birds are closer to reptiles
- C. Both bats and birds originated from the same ancestor group
- D. Birds originated from animals flying lizards

**Answer: D**



**Watch Video Solution**

**213.** Among the following sets of examples for divergent evolution, select the incorrect option

- A. Forelimbs of man, bat and cheetah
- B. Heart of bat, man and cheetah
- C. Brain of bat, man and cheetah
- D. Eye of octopus, bat and man

**Answer: D**



**214.** Germplasm theory Lamarck's principle was given by

Or

Lamarck's acquired characters are not inherited and have no evolutionary value. This statement was given by

A. Weismann

B. Darwin

C. Lamarck



D. Hugo de Vries

**Answer: A**



**Watch Video Solution**

**215.** Author of "Philosophique Zoologique" is

A. Mendel

B. Darwin and Wallace

C. Lamarck

D. Darwin

**Answer: C**



**Watch Video Solution**

**216.** The scientist regarded as Neo-Lamarckist are

- A. August Weismann and T.H. Morgan
- B. Hardly Weinberg
- C. Correns, Tshermak and Hugo de Vries
- D. Kammerer and Mc Dougall

**Answer: D**



**Watch Video Solution**

217. When an organ is used it will develop and if it not used, it weakens to become vestigeal.

Who could have said their theory

Or

The idea of use and disuse of organs was given by

A. Darwin

B. de Vries

C. Lamarck

D. Mendel

**Answer: C**



**Watch Video Solution**

**218.** The basis of Lamarckism is

A. Development of organ

B. Reduction of organ

C. Effect of metabolism

D. Effect of environment

**Answer: D**



**Watch Video Solution**

**219.** Lamarckian theory deals with

A. Acquired characters

B. Germplasm

C. Struggle for existence

## D. Mutation

**Answer: A**



**Watch Video Solution**

**220.** Key point of Lamarck's view about organic evolution is that every offspring

A. Is similar to its parents

B. Inherits characters acquired by the parental generation

C. Shows struggle for existence

D. Repeats phylogeny in its ontogeny

**Answer: B**



**Watch Video Solution**

**221.** Theory of inheritance of acquired characters was put forth by

A. Lamarck

B. Weismann

C. Galton

D. de Vries

**Answer: A**



**Watch Video Solution**

**222.** Most popular example of Lamarck is

A. African Giraffe

B. Snakes

C. Both (a) and (b)



D. Primose

**Answer: C**



**Watch Video Solution**

**223.** A scientist who worked on rats cut their tails upto 21 successive generations but at last he formed that tail remained normal. By this experiment theory of which scientist is disapproved

A. Darwin

B. Lamarck

C. Hogo de Vries

D. Mendal

**Answer: B**



**Watch Video Solution**

**224.** Who was the first to dicard the idea of fixity of species

A. Jean Baptiste Lamarck

B. Charles Darwin

C. Robert Hooke

D. William Harvey

**Answer: A**



**Watch Video Solution**

**225. Who wrote the "Origin of Species"**

A. G.J. Mendal

B. Lamarck

C. de Vries

D. Charles

**Answer: D**



**Watch Video Solution**

**226.** A scientist who gave a theory very similar to that given by Darwin was

Or

Co-worker of Darwin was

A. Malthus

B. Wallace

C. Goldstein

D. Mendel

**Answer: B**



**Watch Video Solution**

**227.** Industrial melanism is an example of

A. Natural selection

B. Mutation

C. Neo lamarckism

D. Neo darwinism

**Answer: A**



**Watch Video Solution**

**228.** Name of the ship in which Charles Darwin went for his expedition

A. Siboga

B. Beagle

C. Sea gull

D. Atlantic

**Answer: B**



**Watch Video Solution**

**229.** The finch species of Galapagos island are grouped according to their food sources.

Which of the following is not a finch food

A. Carrion

B. Insects

C. Tree buds

D. Seeds

**Answer: A**



**Watch Video Solution**

**230.** Darwin gave the theory of evolution was based on



A. Survival of the fittest

B. Natural selection

C. Mutation

D. Descent with modifications

**Answer: B**



**Watch Video Solution**

**231.** According to the Neo-Darwinian theory, which of the following is responsible for the origin of new species

A. Mutations

B. Useful variations

C. Mutations together with natural  
selection

D. Hybridization

**Answer: C**



**Watch Video Solution**

**232.** There is more competition for survival between

- A. Same animals of same niche
- B. Different animals of same niche
- C. Same animals of different niche
- D. Different animals of different niche

**Answer: A**



**Watch Video Solution**

**233.** Who gave the 'Theory of pangenesis'

Or

Who is related with 'Galapagos Island'

A. Lamarck

B. Wallace

C. Haeckel

D. Darwin

**Answer: D**



**Watch Video Solution**

**234.** In the case of peppered moth (*Biston betularia*) the black-coloured form became dominant over the light-coloured form in England during industrial revolution. This is an example of

A. Natural selection whereby the darker forms were selected

B. Appearance of the darker coloured individuals due to very poor sunlight

C. Protective mimicry

D. Inheritance of darker colour character  
acquired due to the darker environment

**Answer: A**



**Watch Video Solution**

**235.** If mating is random, population is large and mutation does not occur, then gene frequencies of population from generation to generation remain constant. This was put forwarded by

A. Lederberg

B. Wallace

C. Hardly Weinberg

D. Haeckel

**Answer: C**



**Watch Video Solution**

**236.** Darwin's Finches are an excellent example of

- A. Brood parasitism
- B. Connecting links
- C. Adaptive radiation
- D. Seasonal migration

**Answer: C**



**Watch Video Solution**

**237.** By performing the replica plating experiment, Lederberg supported the



A. Gene mutations theory

B. Natural selection theory

C. Lamarck theory

D. Darwinian theory

**Answer: B**



**Watch Video Solution**

**238.** Match the scientists and their contributions in the field of evolution

Name of the Scientist		Contributions	
A.	Charles Darwin	1.	Mutation theory
B.	Lamarck	2.	Germ plasm theory
C.	Hugo de Vries	3.	Philosophie Zoologique
D.	Ernst Haeckel	4.	The Origin of species
E.	August Weismann	5.	Biogenetic law
		6.	Essay on population

A. A-4, B-3, C-1, D-5, E-2

B. A-4, B-3, C-5, D-1, E-6

C. A-4, B-4, C-5, D-3, E-1

D. A-2, B-3, C-1, D-5, E-2

**Answer: A**



**Watch Video Solution**

**239.** Darwinian theory was unable of explain

- A. The significance of minute variations
- B. Presence of vestigeal of useless organs
- C. The presence of over specialized organs
- D. All of the above

**Answer: D**



**Watch Video Solution**

**240.** Hardy-Weinberg equilibrium is known to be affected by gene flow, genetic drift, mutation, genetic recombination and

- A. Evolution
- B. Limiting factors
- C. Saltation
- D. Natural selection

**Answer: D**



**Watch Video Solution**

**241.** According of Darwin, the organic evolution is due to

- A. Reduce feeding efficiency in one species due to the presence of interfering species
- B. Intraspecific competition
- C. Interspecific competition
- D. Competition within closely related species

**Answer: C**



**Watch Video Solution**

**242.** In forming the theory of evolution by natural selection, Darwin was greatly influenced by

- A. Mutations of Hugo de Vries
- B. Malthus idea of population control
- C. Environmental factors
- D. Lamarck acquired characters

**Answer: B**



**Watch Video Solution**

**243.** 'Origin of Species' was published in

A. 1809

B. 1858

C. 1956

D. 1859

**Answer: D**



Watch Video Solution

**244.** Darwin's Finches" refers to

A. Fossils of birds collected by Darwin at  
Galapagos islands

B. A type of birds present on Galapagos  
islands

C. Migratory birds collected by Darwin at  
Galapagos island



D. Fossils of reptiles collected by Darwin at  
Galapagos island

**Answer: B**



**Watch Video Solution**

**245.** The Darwinian fitness of an organism is a  
measure of

A. Its ability, relative to others in the  
population to pass its genes to the next

generation

B. The number of offspring it produces

C. Its lifespan

D. Its physical vigour

**Answer: D**



**Watch Video Solution**

**246.** According to Darwin, evolution is .....

A. A sudden but discontinuous process

B. A slow gradual and continuous process

C. A slow, sudden and discontinuous process

D. A slow and discontinuous process

**Answer: B**



**Watch Video Solution**

**247.** By the statement 'Survival of the Fittest'.

Darwin meant that

A. The strongest of all species survives

B. The most intelligent of the species survives

C. The cleverest of the species survives

D. The most adaptable of the species to changes survives

**Answer: D**



**Watch Video Solution**

**248.** The idea of "survival of the fittest" was given by

A. Darwin

B. Herbert Spencer

C. Malthus

D. Lyell

**Answer: B**



**Watch Video Solution**

**249.** The correct meaning of natural selection is

- A. Loss of uncompetant
- B. Survival of the fittest
- C. Variation
- D. Struggle for existence

**Answer: B**



**Watch Video Solution**

250. Industrial melanism was highlighted by

- A. *Mimosa pudica*
- B. *Triticum aestivum*
- C. *Biston betularia*
- D. Rock python

**Answer: C**



**Watch Video Solution**

**251.** Whose bicentenary is the year 2009

A. Darwin

B. Edward Jenner

C. Stanley Miller

D. T.H. Morgan

**Answer: A**



**Watch Video Solution**



252. Natural Selection Theory of Darwin is objected to, because it

A. Stress upon slow and small variations

B. Stress upon interspecific competition

C. Explains that natural calamities take a heavy annular toll of lives

D. Explains, adaptation of certain inherited characters

**Answer: A**





[Watch Video Solution](#)

**253.** The Descent of Man' was published by

A. Charles Darwin in 1871

B. Charles Darwin in 1859

C. Hugo de Vries 1901

D. Lamarck in 1809

**Answer: A**



[Watch Video Solution](#)

**254.** Appearance of dark-coloured peppered moths among the light-coloured ones as a result of increased industrial pollution is an example of

- A. Disruptive selection
- B. Stabilising selection
- C. Directional selection
- D. None of the above

**Answer: C**



**Watch Video Solution**

255. de Vries discarded the principle of

A. Darwin

B. Lamarck

C. Haeckel

D. Mendel

**Answer: A**



**Watch Video Solution**

**256.** In which case Darwin theory is wrong

A. Arrival of the fittest

B. Survival of the fittest

C. Origin of species

D. High efficiency of reproduction

**Answer: A**



**Watch Video Solution**

**257.** Main basis of Neo-Darwinism is

Or

Initiating force of evolution is

A. Struggle for existence

B. Variations

C. Survival of the fittest

D. Gene theory

**Answer: B**



**Watch Video Solution**

**258.** Darwin could not properly explain the theory of evolution due to lack of

A. Evidence

B. Variations

C. Speciation

D. Genetics

**Answer: D**



**Watch Video Solution**

**259.** Darwin judged the fitness of an individual by

- A. Ability to defend itself
- B. Strategy of obtain food
- C. Number of offspring
- D. Dominance over other individuals

**Answer: C**



**Watch Video Solution**



**260.** Prodigality of reproduction in darwinism refers to

A. Every organism produces numerous offspring

B. Successful organism produce numerous offspring

C. Only a few individuals are able to reproduce

D. Only a few individuals are able to survive

**Answer: B**



**Watch Video Solution**

**261.** If Darwin's theory of pangenesis shows similarity with theory of inheritance of acquired character then what shall be correct according to it

A. Useful organs become strong and developed while useless organs become

extinct. These organs help in struggle  
for survival

B. Size of organs increase with ageing

C. Development of organs is due to  
willpower

D. There should be some physical basis  
inheritance

**Answer: C**



**Watch Video Solution**

**262.** Darwinism explains all the following except

- A. Within each species, there are variations
- B. Organisms tend to produce more number of offspring than can survive
- C. Offspring with better traits that overcome connecting are best suited for the environment
- D. Variations are inherited from parents to offspring through genes

**Answer: D**



**Watch Video Solution**

**263.** Which one of these is not a case of artificial selection

A. Shetland pony

B. Great dane dog

C. Broccoli

D. Peppered moth

**Answer: D**



**Watch Video Solution**

**264.** The diversity in the type of beaks of finches adapted to different feeding habits on the galapagos islands, as observed by Darwin provides evidence for

- A. Origin of species by natural selection
- B. Intraspecific variations
- C. Intraspecific competition

## D. Interspecific competition

**Answer: A**



**Watch Video Solution**

**265.** What is the most important factor for the success of animal population

A. Natality

B. Unlimited food

C. Adaptability

D. Interspecific activity

**Answer: C**



**Watch Video Solution**

**266.** Development of patagia in animals is an

A. Cave adaptation

B. Volant adaptation

C. Aquatic adaptation

D. Arboreal adaptation



**Answer: B**



**Watch Video Solution**

**267.** Which one of the following was not given by Darwin's theory of evolution

- A. Struggle for existence
- B. Over production
- C. Natural selection
- D. Genetic drift

**Answer: D**



**Watch Video Solution**

**268.** Development of unrelated groups of animals along parallel lines in adaptation to a similar environment is called

- A. Adaptive convergence
- B. Adaptive radiation
- C. Adaptive divergence
- D. Adaptive induction

**Answer: A**



**Watch Video Solution**

**269.** Darwin in his 'Natural Selection Theory' did not believe in any role of which one of the following in organic evolution

- A. Discontinuous variations
- B. Parasites, predators and natural enemies
- C. Survival of the fittest
- D. Struggle for existence

**Answer: A**



**Watch Video Solution**

**270.** Industrial melanism is an example of

A. Defensive adaptation of skin against ultraviolet radiations

B. Drug resistance

C. Darkening of skin due to smoke from industries

D. Protective resemblance with the surrounding

**Answer: D**



**Watch Video Solution**

**271.** Which one of the following phenomena supports Darwin's concept of natural selection in organic evolution?

A. Development of transgenic animals

B. Production of 'Dolly' the sheep by cloning

C. Prevalence of pesticide resistant insects

D. Development of organs from 'stem cells' for organ transplantation

**Answer: C**



**Watch Video Solution**

272. The biologist who has been called the "Darwin of the 20<sup>th</sup> century", was

- A. Linnaeus
- B. Ernst Mayr
- C. Diener
- D. Whittaker

**Answer: B**



**Watch Video Solution**

273. According to Darwinism fossil of organisms found in south America resembles most, the fossil of

Or

Most primitive living mammals which provided an evidence of organic evolution from geographical distribution are found in

A. North America

B. Africa

C. Australia

D. Both (a) and (b)



**Answer: C**



**Watch Video Solution**

**274.** Darwin's finches discovered from the Galapagos island provided evidence in favour of

- A. Camouflage
- B. Mimicry
- C. Biogeographical evidence of evolution
- D. Seasonal migration

**Answer: C**



**Watch Video Solution**

**275.** The classical example of adaptive radiation in development of new species is

- A. Darwin finches
- B. Marsupials of Australia
- C. Giant turtle
- D. All of these

**Answer: D**



**Watch Video Solution**

**276.** Theory of natural selection was proposed by

A. Darwin

B. Lamarck

C. de Vries

D. Theophrastus

**Answer: A**



**Watch Video Solution**

**277. Neo-Darwinism is**

- A. Natural selection theory
- B. Modern mutation theory
- C. Modern synthetic theory
- D. Population theory

**Answer: C**



Watch Video Solution

**278.** Which of the following had the smallest brain capacity

- A. Homo sapiens
- B. Homo neanderthalensis
- C. Homo habilis
- D. Homo erectus

**Answer: C**



**279.** The brain capacity of Homo erectus was

A. 800 to 1300 cc

B. 1650 cc

C. 650 cc

D. 1400 cc

**Answer: A**



**280.** Dubois in 1891 found the fossil of Java ape man. It is

Or

Which one of the following is highly evolved

A. *Sinanthropus pekinensis*

B. *Homo erectus*

C. *Homo rhodesiensis*

D. *Homo sapiens*

**Answer: B**



**View Text Solution**

281. Human belong to the family

A. Hominidae

B. Pongidae

C. Hylobatidae

D. Ramapithecus

**Answer: A**



**Watch Video Solution**



**282.** Peking man' is known as

Or

Which of the primate is the closest relative of man

A. Australopithecus

B. Sinanthropus

C. Pithecanthropus

D. Homo sapiens

**Answer: B**



**Watch Video Solution**

**283.** The recent ancestors of modern man were

A. Java ape man and Peking man

B. Peking man and Rhodesian Man

C. Rhodesian man and Cro-Magnon man

D. Cro-Magnon man and Neanderthal man

**Answer: D**



**Watch Video Solution**

**284.** The age of the fossil of Dryopithecus on the geological time scale is

A.  $75 \times 10^6$  years back

B.  $25 \times 10^6$  years back

C.  $2.5 \times 10^6$  years back

D.  $50 \times 10^6$  years back

**Answer: B**



**Watch Video Solution**

**285.** Which of the following is true for 'Homo sapiens'

- A. Protruded mouth
- B. Cranial capacity of 1450 c.c
- C. Omnivorous
- D. Developed chin

**Answer: B**



**Watch Video Solution**

**286.** Neanderthal man differs from modern man in

- A. Receding jaws
- B. Protruding jaws
- C. Could make good tools
- D. Could make good pictures

**Answer: B**



**Watch Video Solution**

**287.** Homo erectus' is the zoological name of

Or

Thick skull, cranial capacity about 1075 c.c., low fore head, absence of chin and large canine were present in

A. Cro-Magnon man

B. Peking man

C. Nut cracker man

D. Neanderthal man

**Answer: B**



Watch Video Solution

**288.** During evolution of man many changes have taken place in his ancestral characters. Which one of the following is an insignificant change

A. Change of diet from hard tough fruits and roots into soft food

B. Qualitative improvement in the structure of hands skills for making tools

C. Disappearance of tail

D. Improvement in speech for  
communication and social behaviour

**Answer: C**



**Watch Video Solution**

**289.** The first fossil of Australopithecus was  
discovered in

A. Australopithecus



B. Zinjanthropus

C. Pithecanthropus

D. Plesianthropus

**Answer: A**



**Watch Video Solution**

**290.** The first fossil of Australopithecus was discovered in

A. Olduvai Gorge, Tanzania

B. Fayum deposits of Egypt

C. Siwalik hills in India

D. Taung in South Africa

**Answer: D**



**Watch Video Solution**

**291.** Oldest tool maker is

Or

Which primitive man used stones to produce  
fire

A. African man

B. Java man

C. Proconsul

D. China man

**Answer: B**



**Watch Video Solution**

**292. Homo sapiens/Homo Erectus evolved in**

A. Miocene

B. Oligocene

C. Pliocene

D. Pleistocene

**Answer: D**



**Watch Video Solution**

**293.** Cro-Magnon man was

A. Herbivorous

B. Frugivorous

C. Sanguivorous

D. Carnivorous

**Answer: D**



**Watch Video Solution**

**294.** The prehistoric ancestor of man which existed during late pleistocene, is

Or

The extinct human who lived 1,00,000 to 40,000 years ago, in Europe, Asia and parts of

africa, with short stature, heavy eyebrows, retreating fore heads, large jaws with heavy teeth, stocky bodies a lumbering gait and stooped posture was

A. Australopithecus

B. Zinjanthropus

C. Neanderthal man

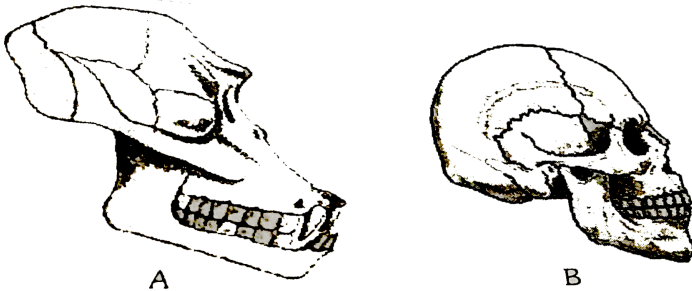
D. Atlantic man

**Answer: C**



**Watch Video Solution**

295. The given illustrate shows the skull of two different mammals. Which of the following accurately describes the difference between these skulls



A. Skull A is the skull of an ape and skull B is the skull of human

B. Skull A is of a primate and skull B is not  
of a primate

C. Skull A has more brain capacity than  
skull B

D. Skull A has more teeth than skull B

**Answer: A**



**Watch Video Solution**



**296.** The cranial capacity of Java ape man was about

A. 560 c.c

B. 900 c.c

C. 1,300 c.c

D. 1,000 c.c

**Answer: B**



**Watch Video Solution**

297. Anthropometry is useful in the study of

A. Human evolution

B. Human habits

C. Human nature

D. Human brains

**Answer: A**



**Watch Video Solution**

**298.** Evolution of man is possible because our ape like ancestors has

- A. Migratory instinct
- B. Developed brain
- C. Binocular vision
- D. Large cranial capacity

**Answer: D**



**Watch Video Solution**

**299.** Which of the following stood erect first

Or

The extinct human ancestor, who ate only fruits and hunted with stone weapons was

A. Java man

B. Peking man

C. Australopithecus

D. Cro-Magnon man

**Answer: C**



**Watch Video Solution**

**300.** The modern man evolved

- A. 10,000 years ago
- B. 25,000 years ago
- C. 2,50,000 years ago
- D. 5,00,000 years ago

**Answer: A**



**Watch Video Solution**

**301.** Who first discovered fossils of 'Ramapithecus'

A. Dubois

B. R.Dart

C. G.E. Lewis

D. J.K. Fuhlort

**Answer: C**



**Watch Video Solution**

302. In evolution.....evolved 1<sup>st</sup> time in annelida

- A. Cephalization
- B. True coelome
- C. Bilateral symmetry
- D. Triploblastic nature

**Answer: B**



**Watch Video Solution**

**303.** Man was originated in which of the following era

A. Paleocene

B. Pliocene

C. Miocene

D. Devonian

**Answer: B**



**Watch Video Solution**



**304.** Proper burial of dead bodies, for the first time started which prehistoric man's period

A. Peking man

B. Java man

C. Neanderthal man

D. Cro-Magnon man

**Answer: C**



**Watch Video Solution**

**305.** The most recent and direct prehistoric ancestor of present man is

- A. Cro-Magnon
- B. Preneanderthal
- C. Neanderthal
- D. None of the above

**Answer: A**



**Watch Video Solution**

**306.** The modern man differs from the apes in

A. Protruding eyes

B. Sparse body hair

C. Wearing of clothes

D. Arms shorter than legs

**Answer: D**



**Watch Video Solution**

**307.** Bipedal locomotion is advantageous because it

- A. Releases fore limbs to perform the important functions
- B. Increases the speed
- C. Reduces body weight
- D. Provides better support to the body

**Answer: A**



**Watch Video Solution**

**308.** There are two opposing views about origin of modern man. According to one view Homo erectus in Asia were the ancestors of modern man. A study of variation of DNA however suggested African origin of modern man. What kind of observation of DNA variation could suggest this

- A. Greater variation in Asia than in Africa
- B. Greater variation in African than in Asia
- C. Similar variation in African and Asia

D. Variations only in Asia and no variation  
in Africa

**Answer: B**



**Watch Video Solution**

**309.** The highest cranial capacity is/was  
present in

A. Java man

B. Peking man

C. Handy man

D. Modern man

**Answer: D**



**Watch Video Solution**

**310.** Common origin of man and chimpanzee is best shown by

A. Dental formula

B. Cranial capacity

C. Binocular vision

D. Chromosome number

**Answer: D**



**Watch Video Solution**

**311.** Fossils of Australopithecus were first found in

A. America

B. Australia



C. S.Africa

D. E.Africa

**Answer: C**



**Watch Video Solution**

**312.** Ancestors of mammals belongs to

A. Ornithischia

B. Therapsida

C. Silusidea

D. Chelonia

**Answer: B**



**Watch Video Solution**

**313.** Early Africa man was discovered in 1948 by Leakey. It was

A. Homo habilis

B. Gigantopithecus

C. Proconsul

D. Homo erectus

**Answer: A**



**Watch Video Solution**

**314.** Australopithecus had a cranial capacity

A. 800 c.c

B. 500 c.c

C. 600 c.c

D. 700 c.c

**Answer: B**



**Watch Video Solution**

**315.** The closest relative of modern man is considered to be

A. Chimpanzee

B. Orangutan

C. Apes

D. Gibbon

**Answer: A**



**Watch Video Solution**

**316.** Among the human ancestors the brain size was more than 1000 CC in

- A. Homo neanderthalensis
- B. Homo erectus
- C. Ramapithecus
- D. Homo habilis

**Answer: A**



**Watch Video Solution**

**317.** The fossil of Cro-Magnon were found in

A. Algeria-In ternifine deposits

B. Germany-In ravines

C. France-Rack shelters

D. Africa-Olduvi

**Answer: C**



Watch Video Solution

**318.** Cranial capacity of Cro-Magnon was

A. 1600 c.c

B. 1350 c.c

C. 1075 c.c

D. 1450 c.c

**Answer: A**



Watch Video Solution

**319.** The lowest capacity of cranium was found in the

A. Neanderthal man

B. Australopithecus

C. Cro-Magnon man

D. Java man

**Answer: B**



**Watch Video Solution**



**320.** What kind of evidence suggested that man is more closely related with chimpanzee than with other hominoid apes

A. Evidence from fossil remains, and the fossil mitochondosomes, DNA alone

B. Evidence from DNA extracted from sex chromosomes, autosomes and mitochondria

C. Evidence from DNA from sex chromosomes only

D. Comparison of chromosomes

morphology only

**Answer: B**



**Watch Video Solution**

**321.** Which of the following is more close to man

A. Pro-consul

B. Dryopithecus

C. Gibbon

D. Orangutan

**Answer: B**



**Watch Video Solution**

**322.** Cranial capacity of Neanderthal man is

A.  $1350 - 1500\text{cm}^3$

B.  $1400 - 1450\text{cm}^3$

C.  $915 - 1250\text{cm}^3$

D.  $750 - 900\text{cm}^3$

**Answer: B**



**Watch Video Solution**

**323.** Cranial capacity of modern man is

A.  $350 - 400\text{cm}^3$

B.  $500 - 1000\text{cm}^3$

C.  $915 - 1700\text{cm}^3$

D.  $1350 - 1500\text{cm}^3$

**Answer: D**



**Watch Video Solution**

**324.** Which one of the following statements is correct

A. Homo erectus is the ancestor of man

B. Cro-magnon man's fossils has been found in Ethiopia

C. Australopithecus is the real ancestor of  
modern man

D. Neanderthal man is the direct ancestor  
of Homo sapiens

**Answer: D**



**Watch Video Solution**

**325.** Which of the following is the most  
primitive ancestor of man

Or

The primate which existed 15 mya among these was

Or

Which fossil man has been known from Shivalik hills in India

A. Australopithecus

B. Ramapithecus

C. Homo habilis

D. Homo neanderthalensis

**Answer: B**



**326.** Biological name of the Java man is

A. Homo erectus

B. Homo sapiens

C. Homo habilis

D. Pithecanthropus erectus (Homo erectus  
erectus)

**Answer: D**





**327.** Island (continent) where largest number of human fossils have been discovered

A. Europe

B. Africa

C. America

D. Asia

**Answer: B**



**Watch Video Solution**

**328.** What was the most significant trend in the evolution of modern man (*Homo sapiens*) from his ancestors

- A. Shortening of jaws
- B. Binocular vision
- C. Increasing cranial capacity
- D. Upright posture

**Answer: D**



**Watch Video Solution**

**329.** Evolution of man took place in

Or

Geological evidence for most primitive mammal is found in

A. Central Africa

B. Central Asia

C. Australia

D. America

**Answer: A**



**Watch Video Solution**

**330.** When the entire sole rests on the ground during walking as in case of a man, it is known as

A. Plantigrade

B. Digitigrade

C. Perikaryon

D. Hallux

**Answer: A**



**331.** Largest cranial capacity was found in

Or

Which primitive man resembles with modern man

A. Neanderthal man

B. Cro-Magnon man

C. Java ape man

D. Peking man

**Answer: B**



**Watch Video Solution**

**332.** The fossils of *Sinanthropus pekinensis* have been discovered in which epoch

A. Pleistocene

B. Pliocene

C. Eocene

D. Palaeocene

**Answer: A**



**Watch Video Solution**

**333.** In *Homo habilis*, 'habilis' refers to

- A. Wandering species
- B. Ancient man
- C. Modern man
- D. Tool maker

**Answer: D**



Watch Video Solution

**334.** Which of the following is the correct order of evolutionary history of man

A. Peking man, heidelberg man,

neanderthal, cro-magnon

B. Peking man, homosapiens, cro-magnon,

neanderthal

C. Peking man, neanderthal, homosapiens,

heidelberg,



D. Peking man, cro-magnon, homosapiens,  
neanderthal

**Answer: A**



**Watch Video Solution**

**335.** Which one of the following character  
differentiate man from other mammals

A. Superior Intelligence

B. Power of speech

C. Social life

D. Greater cranial capacity

**Answer: D**



**Watch Video Solution**

**336.** Which of the following was the transitional stage (connective link) between apes and humans

A. Homo habilis

B. Homo erectus

C. Australopithecus ramidus

D. Australopithecus africanus

**Answer: C**



**Watch Video Solution**

**337.** Which of the following shows the smallest cranial capacity?

A. Gorilla

B. Chimpanzee

C. Modern man

D. Java ape man

**Answer: B**



**Watch Video Solution**

**338.** Ancestor of man who first exhibited bipedal gait

A. Australopithecus

B. Cro-Magnon man

C. Java ape man

D. Peking man

**Answer: A**



**Watch Video Solution**

**339.** Homo sapiens originated how many years ago

A. About  $1\frac{1}{2}$  lakh years ago

B. About 2 lakh years ago

C. About  $2\frac{1}{2}$  lakh years ago

D. About 3 lakh years ago

**Answer: A**



**Watch Video Solution**

**340.** Pithecanthropus erectus fossil was found  
in

A. China

B. Japan

C. Java

D. Texas

**Answer: C**



**Watch Video Solution**

**341.** Neanderthal man lived in

A. Desert

B. Deep forest

C. Mountains

D. Cave

**Answer: D**



**Watch Video Solution**

**342.** In human evolution which is most recent

A. Middle Paleolithic

B. Upper Paleolithic

C. Neolithic



D. Mesolithic

**Answer: C**



**Watch Video Solution**

**343.** Which one of the following is direct ancestor of modern man

A. Australopithecus

B. Ramapithecus

C. Homo erectus

D. Homo habilis

**Answer: C**



**Watch Video Solution**

**344.** Which of the following is used as an atmospheric pollution indicator

- A. Lepidoptera
- B. Lichens
- C. Lycopersicon

D. Lycopodium

**Answer: B**



**Watch Video Solution**

**345.** The theory of spontaneous generation stated that

A. Life arose from living forms only

B. Life can arise from both living and non-living

C. Life can arise from non-living things only

D. Life arises spontaneously, neither from living nor from the non-living

**Answer: C**



**Watch Video Solution**

**346.** Animal husbandry and plant breeding programmes are the examples of

A. Reverse evolution

B. Artificial selection

C. Mutation

D. Natural selection

**Answer: B**



**Watch Video Solution**

**347.** Palaentological evidences for evolution refer to the

A. Development of embryo

B. Homologous organs

C. Fossils

D. Analogous organs

**Answer: C**



**Watch Video Solution**

**348.** The bones of forelimbs of whale, bat, cheetah and man are similar in structure, because

- A. One organism has given rise to another
- B. They share a common ancestor
- C. They perform the same function
- D. They have biochemical similarities

**Answer: B**



**Watch Video Solution**

**349.** Analogous organs arise due to

- A. Divergent evolution

B. Artificial selection

C. Genetic drift

D. Convergent evolution

**Answer: D**



**Watch Video Solution**

**350.**  $(p + q)^2 = p^2 + 2pq + q^2 = 1$  represents

an equation used in

A. population genetics



B. Mendelian genetics

C. Biometrics

D. Molecular genetics

**Answer: A**



**Watch Video Solution**

**351.** Appearance of antibiotic-resistant bacteria is an example of

A. Adaptive radiation

B. Transduction

C. Pre-existing variation in the population

D. Divergent evolution

**Answer: C**



**Watch Video Solution**

**352.** Evolution of life shows that life forms had a trend of moving from

A. Land to water

B. Dryland to wet land

C. Fresh water to sea water

D. Water to land

**Answer: D**



**Watch Video Solution**

**353.** Viviparity is considered to be more evolved because

A. The young ones are left on their own

B. The young ones are protected by a thick shell

C. The young ones are protected inside the mother's body and are looked after they are born leading to more chances of survival

D. The embryo takes a long time to develop

**Answer: C**



**Watch Video Solution**

**354.** Fossils are generally found in

- A. Sedimentary rocks
- B. Igneous rocks
- C. Metamorphic rocks
- D. Any type of rock

**Answer: A**



**Watch Video Solution**

**355.** For the MN-blood group system, the frequencies of M and N alleles are 0.7 and 0.3 respectively. The expected frequency of MN-blood group bearing organisms is likely to be

A. 42 %

B. 49 %

C. 9 %

D. 58 %

**Answer: A**



Watch Video Solution

**356.** Which type of selection explains industrial melanism observed in moth, *Biston bitularia*

- A. Stabilising
- B. Directional
- C. Disruptive
- D. Artificial

**Answer: B**



**Watch Video Solution**

**357.** The most accepted line of descent in human evolution is

A. Australopithecus → Ramapithecus

→ Homo sapiens → Homo habilis

B. Homo erectus → Homo habilis →

Homo sapiens

C. Ramapithecus → Australopithecus

→ Homo habilis → Homo erectus

→ Homo sapiens



D. Australopithecus → Ramapithecus

→ Homo erectus → Homo habilis

→ Homo sapiens

**Answer: C**



**Watch Video Solution**

**358.** Which of the following is an example for link species

A. Lobe fish

B. Dodo bird

C. Sea weed

D. Chimpanzee

**Answer: D**



**Watch Video Solution**

**359.** Match the scientists listed under column 'I' with ideas listed Column 'II'



A. A-i, B-iv, C-ii, D-iii

B. A-iv, B-i, C-ii, D-iii

C. A-ii, B-iv, C-iii, D-i

D. A-iv, B-iii, C-ii, D-i

**Answer: B**



**View Text Solution**

**360.** In 1953 S.L. Miller created primitive earth conditions in the laboratory and gave experimental evidence for origin of first form

of life pre-existing non-living organic molecules. The primitive earth condition created include

A. Low temperature, volcanic storms, atmosphere rich in oxygen

B. Low temperature, volcanic storms, reducing atmosphere

C. High temperature, volcanic storms, non-reducing atmosphere

D. High temperature, volcanic storms,

reducing atmosphere containing

$CH_4NH_3$  etc

**Answer: D**



**Watch Video Solution**

**361.** Variations during mutations of meiotic recombinations are

A. Random and directionless

B. Random and directional

C. Small and directional

D. Random , small and directional

**Answer: A**



**Watch Video Solution**

**362.** The 2000 year old seed excavated from King Herod's place at dead sea belong to

A. *Dendrocalamus strictus*

B. *Lupine articus*

C. Phoenix

D. *Strobilanthus kunthiana*

**Answer: C**



**Watch Video Solution**

**363.** If you go back in the history approx. 4500 million years back when atmosphere was reducing the organism were

A. Autotroph, aerobic

B. chemo-autotroph, anaerobic

C. Chemo-heterotroph, anaerobic

D. Heterotroph, anaerobic

**Answer: C**



**Watch Video Solution**

**364.** The ancestors of modern day Frogs and Salamanders are



A. Ichthyophis

B. Jawless fish

C. Amphioxus

D. Coelocanth

**Answer: D**



**Watch Video Solution**

**365.** Following are the statements regarding the origin of life

(A) The earliest organisms that appeared on

the earth were non-green and presumably anaerobes

(B) The first autotrophic organisms were the chemoautotrophs that never released oxygen.

Of the above statements which one of the following options is correct

A. (A) is correct but (B) is false

B. (B) is correct but (A) is false

C. Both (A) and (B) correct

D. Both (A) and (B) false

**Answer: C**



Watch Video Solution

**366.** Given below are four statements (A-D) each with one or two blanks. Select the option which correctly fills up the blanks in two statements:

(A) Wings of butterfly and birds look alike and are the results of i, evolution.

(B) Miller showed that  $CH_4$ ,  $H_2$ ,  $NH_3$  and i, when exposed to electric discharge in a flask resulted in formation of ii.

(C) Vermiform appendix is a i organ and an ii

evidence of evolution.

(D) According to Darwin evolution took place due to i and ii of the fittest.

A. (D)-(i) Small variations, (ii) Survival (A)-(i)

Convergent

B. (A)-(i) Convergent, (B)-(i)Oxygen, (ii)

nucleosides

C. (B)-(i) Water vapour, (ii) Amino acids (C)-

(i) Rudimentary, (ii) Anatomical

D. (C)-(i) Vestigial, (ii) Anatomical (D)-(i)

Mutations, (ii) Multiplication

**Answer: A**



**Watch Video Solution**

**367.** A species that contains two or more sub-species are called

A. Sibling species

B. Sub-species pool

C. Polytypic species

D. Biological races

**Answer: C**



**Watch Video Solution**

**368.** Animals living in colder region have shorter tail and ears as compared to the animals living in warmer regions. This phenomenon is called

A. Bergman's law

B. Gloger's law

C. Allen's law

D. Jordan's law

**Answer: C**



**Watch Video Solution**

**369.** The characters such as pointed elongated snout, strong and stout forelimbs, well

developed claws are observed in  
\_\_\_\_\_adaptation

A. Arboreal

B. Aerial

C. Cursorial

D. Fossorial

**Answer:**



**Watch Video Solution**



**370.** Trilobites were evolved during which of the following period

A. Silurian

B. Cambrian

C. Ordovician

D. Pre-cambrian

**Answer: B**



**Watch Video Solution**

**371.** Which one of the following evidences does not favour the Lamarckian concept of inheritance of acquired characters

A. Melanization in peppered moth in industrial areas

B. Presence of webbed toes in aquatic birds

C. Lack of pigment in cave-dwelling animals

D. Absence of limbs in snakes

**Answer: C**



**Watch Video Solution**

**372.** 'In different races, there may be difference in culture and ways of living but capacity in all is the same". It was the opinion of

A. Darwin

B. Wallace

C. Lamarck

D. Shapiro

**Answer: B**



Watch Video Solution

**373.** Present day mammals have their predecessor in

A. Therapsids

B. Diapsids

C. Synapsids

D. Anapsids

**Answer: A**



**374.** Adaptation of a species is its

- A. Ecdysis
- B. Metamosphosis
- C. Acquired character
- D. Hereditary character

**Answer: D**



**375.** Which one of the following sequence was proposed by Darwin and Wallace for organic evolution

A. Variation, natural selection, overproduction, constancy of population size

B. Overproduction, variations, constancy of population size, natural selection

C. Variations, constancy of population size, overproduction, natural selection

D. Overproduction, constancy of population size, variations, natural selection

**Answer: D**



**Watch Video Solution**

**376.** In the developmental history of mammalian heart, it is observed that it passes through a two-chambered fish-like heart, three-chambered frog-like heart and finally

four-chambered stage. To which hypothesis can this above cited statement be approximated

- A. Biogenetic law
- B. Hardy Weinberg law
- C. Lamarck's principle
- D. Mendelian principle

**Answer: A**



**Watch Video Solution**



**377.** Organisms which obtain energy by the oxidation of reduced inorganic compounds are called

- A. Saprozoic
- B. Chemoautotrophs
- C. Photoautotrophs
- D. Coproheterotroph

**Answer: B**



**Watch Video Solution**

**378.** Some of the important evidences of organic evolution are

A. Occurrence of homologous and vestigial organs

B. Occurrence of analogous and vestigial organs

C. Occurrence of homologous and analogous organs

D. Occurrence of analogous organs only

**Answer: A**



**Watch Video Solution**

**379.** Flagella of prokaryotic and eukaryotic cells differ in

- A. Microtubular organization and type of movement
- B. Microtubular organization and function
- C. Type of movement and placement in cell

D. Location in cell and mode of unctioning

**Answer: A**



**Watch Video Solution**

**380.** Indicate the completely correct statement about human races

- A. All human races can interbreed but most will produce infertile young ones
- B. Different human races cannot interbreed

C. Some human races can interbreed

D. All human races can interbreed and  
produce fertile offspring

**Answer: D**



**Watch Video Solution**

**381.** Correct sequence is stages in the evolution of the modern man, (Homo sapiens),  
is

A. Neanderthal man, Australopithecus, Cro-magnon man, Homo erectus, modern man

B. Australopithecus, Homo erectus, Neanderthal man, Cro-man, modern man

C. Homo erectus, Australopithecus, Neanderthal man, Cro-magnon man, modern man

D. Australopithecus, Neanderthal man, Cro-magnon man, Homo erectus, modern

man

**Answer: B**



**Watch Video Solution**

**382.** Which of the following sets represents the correct sequence of the evolution of man

A. Kenyapithecus-Australopithecus- Homo habilis- Pithecanthropus-Homo sapiens

B. Kenyapithecus-Australopithecus-

Pithecanthropus-Homo habilis- -Homo sapiens

C. Australopithecus - Kenyapithecus-Homo

habilis-Pithecanthropus-Homo sapiens

D. Pithecanthropus-Australopithecus,

Kenyapithecus-Homo habilis-Homo sapiens

**Answer: A**



**Watch Video Solution**



**383.** In recent years, DNA sequence (nucleotide sequence) of mt-DNA and Y chromosomes were considered for the study of human evolution, because

A. They can be studied from the samples of fossils remains

B. They are small, and therefore, easy to study

C. They are uniparental in origin and do not take part in recombination

D. Their structure is known in greater detail

**Answer: C**



**Watch Video Solution**

**384.** The early stage human embryo distinctly possesses

A. Gills

B. Gill slits

C. External ear (Pinna)

D. Eye brows

**Answer: B**



**Watch Video Solution**

**385.** Select the wrong pair

A. Haldane - Hot dilute soup

B. Oparin - Protobiont

C. Fox - Coacervates

D. Spallanzani - Abiogenesis

**Answer: D**



**Watch Video Solution**

**386.** Which of the following was expert in making tools, weapons painting etc

Or

Whose drew excellent pictures of animals ib

caves, made tools, curved ornaments from ivory stone arrows etc

- A. Java ape man
- B. Peking man
- C. Cro-Magnon man
- D. Rhodesian man

**Answer: C**



**Watch Video Solution**

**387.** Select the correct match

A. Gibbon-Cercopithecoidea

B. Lemur- Prosimii

C. New world monkey-Hominoidea

D. Tarsier- Anthropeidea

**Answer: B**



**Watch Video Solution**

**388.** Fossil contents of the alimentary canal are termed as

A. Casts

B. Coprolites

C. Impressions

D. Trails

**Answer: B**



**Watch Video Solution**

**389.** Species is

- A. Population of individuals having same genotypes and phenotypes
- B. A group of individuals inhabiting a geographical area
- C. A group of interbreeding populations
- D. Population of one type

**Answer: C**



**Watch Video Solution**



**390.** Which one of the following statements is correct regarding evolution of mankind

- A. Neanderthal man and Cro-Magnon man were living at the same time
- B. Australopithecus was living in Australia
- C. Homo erectus is preceded by Homo habilis
- D. None of these

**Answer: C**



**391.** Match the evolution concepts and their proposers and select the right option



A. i-C, ii-D, iii-A, iv-B

B. i-D, ii-C, iii-B, iv-A

C. i-D, ii-B, iii-C, iv-A

D. i-B, ii-C, iii-A, iv-D

**Answer: A**



[View Text Solution](#)

**392.** A potential danger to a population that has been greatly reduced in number is the

- A. Hardy-Weinberg disequilibrium
- B. Tendency towards assortative mating
- C. Reduced gene flow
- D. Loss of genetic variability

**Answer: D**



**393.** An isolated population of humans with approximately equal numbers of blue-eyed and brown-eyed individuals was decimated by an earthquake. Only a few brown-eyed people remained to form the next generation. This kind of change in the gene pool is called a

- A. Hardy-Weinberg equilibrium
- B. Blocked gene flow
- C. Bottleneck effect

D. Founder effect

**Answer: C**



**Watch Video Solution**

**394.** The tendency of population to remain in genetic equilibrium may be disturbed by

A. Lack of random mating

B. Random mating

C. Lack of migration

D. Lack of mutations

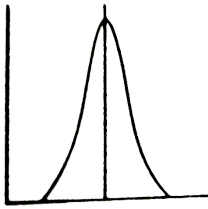
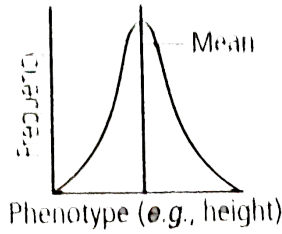
**Answer: A**



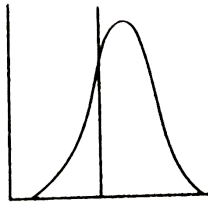
**Watch Video Solution**

**395.** Following is the digrammatic representation of the operation of natural selection on different traits. Which of the following options correctly identifies all the

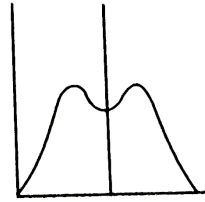
three graphs A,B and C?



A



B



C

A. A-Directional, B-Disruptive, C-Stabilising

B. A-Stabilising, B-Disruptive, C-Directional

C. A-Stabilising , B-Directional, C-Disruptive

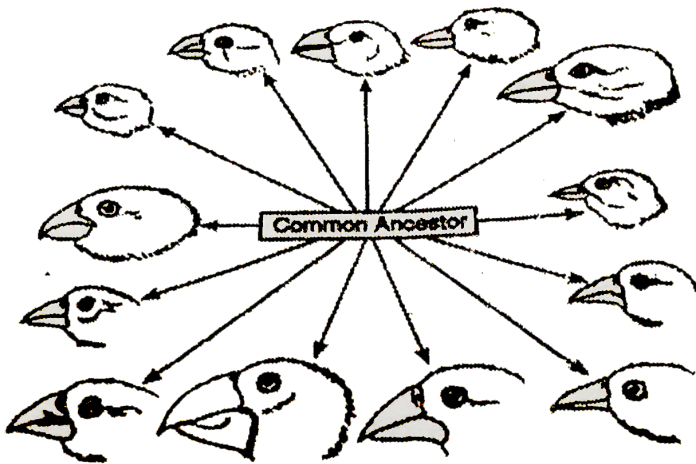
D. A-Directional, B- Stabilising, C-Disruptive

**Answer: C**



Watch Video Solution

396. The diversity within the wild bird species in the given figure can best explained by which process



A. Natural selection



B. Adaptive radiation

C. Ecological succession

D. Both (a) and (b)

**Answer: D**



**Watch Video Solution**

**397.** A molecule that can act as a genetic material must fulfill the traits given below, except

- A. It should provide the scope for slow changes that are required for evolution
- B. It should be able to express itself in the form of 'Mendelian characters'
- C. It should be able to generate its replica
- D. It should be unstable structurally and chemically

**Answer: D**



**Watch Video Solution**

**398.** Interspecific hybridization in the mating of

A. More closely related individuals within same breed for 4-6 generations

B. Animals within same breed without having common ancestors

C. Two different related species

D. Superior males and females of different breeds

**Answer: C**



**Watch Video Solution**

**399.** Which of the following is the correct sequence of events in the origin of life

I. Formation of protobionts

II. Synthesis of organic monomers

III. Synthesis of organic polymers

IV. Formation of DNA-based genetic systems

A. II, III, IV, I

B. I, II, III, IV

C. I, III, II, IV

D. II, III, I, IV

**Answer: D**



**Watch Video Solution**

**400.** Assertion: We have lost all the direct evidence of origin of life.

Reason : The person responsible to protect the evidence were not skilled.

A. If both the assertion and the reason are true and the reason is a correct explanation of the assertion

B. If both the assertion and reason are true but the reason is not a correct explanation of the assertion

C. If the assertion is true but the reason is false

D. If both the assertion and reason are false

**Answer: C**



**Watch Video Solution**

**401.** Assertion : Ginkgo biloba is living fossil.

Reason : Organisms which have persisted and remain unchanged for the past several million years while their relative disappeared.

A. If both the assertion and the reason are true and the reason is a correct explanation of the assertion

B. If both the assertion and reason are true but the reason is not a correct explanation of the assertion

C. If the assertion is true but the reason is false

D. If both the assertion and reason are false

**Answer: A**



**Watch Video Solution**



**402.** Assertion : Leaf butterfly and stick insect show mimicry to dodge their enemies.

Reason : Mimicry is a method to acquire body colour blinding with the surroundings.

A. If both the assertion and the reason are true and the reason is a correct explanation of the assertion

B. If both the assertion and reason are true but the reason is not a correct explanation of the assertion

C. If the assertion is true but the reason is false

D. If both the assertion and reason are false

**Answer: A**



**Watch Video Solution**

**403.** Natural selection is the outcome of difference in survival and reproduction among individuals that show variation in one or more

traits.

Reason : Adaptive forms of a given trait tend to become more common, less adaptive ones become less common or disappear.

A. If both the assertion and the reason are true and the reason is a correct explanation of the assertion

B. If both the assertion and reason are true but the reason is not a correct explanation of the assertion

C. If the assertion is true but the reason is false

D. If both the assertion and reason are false

**Answer: A**



**Watch Video Solution**

**404.** Assertion: Coacervates are believed to be the precursors of life. Itbegt Reason :

Coacervates were self-duplicating aggregates of proteins surrounded by lipid molecules.

A. If both the assertion and the reason are true and the reason is a correct explanation of the assertion

B. If both the assertion and reason are true but the reason is not a correct explanation of the assertion

C. If the assertion is true but the reason is false

D. If both the assertion and reason are false

**Answer: C**



**Watch Video Solution**

**405.** Assertion : From evolutionary point of view, human gestation period is believed to be shortening.

Reason : One major evolutionary trend in humans has been the larger head undergoing

relatively faster growth rate in the foetal stage.

A. If both the assertion and the reason are true and the reason is a correct explanation of the assertion

B. If both the assertion and reason are true but the reason is not a correct explanation of the assertion

C. If the assertion is true but the reason is false

D. If both the assertion and reason are false

**Answer: D**



**Watch Video Solution**

**406.** Assertion : Cell like aggregates of complex organic compounds are called coacervates.

Reason : Coacervates have power to grow and divide.



A. If both the assertion and the reason are true and the reason is a correct explanation of the assertion

B. If both the assertion and reason are true but the reason is not a correct explanation of the assertion

C. If the assertion is true but the reason is false

D. If both the assertion and reason are false

**Answer: B**



**Watch Video Solution**

**407.** Assertion : The modern horse evolved during pliocene epoch.

Reason: It arose from Pliohippus.

A. If both the assertion and the reason are true and the reason is a correct explanation of the assertion

B. If both the assertion and reason are true but the reason is not a correct explanation of the assertion

C. If the assertion is true but the reason is false

D. If the assertion is false but reason is true

**Answer: D**



**Watch Video Solution**

**408.** Assertion : Homologous organs have common ancestry and similar function.

Reason : Analogous organs have unlike origin and dissimilar function.

A. If both the assertion and the reason are true and the reason is a correct explanation of the assertion

B. If both the assertion and reason are true but the reason is not a correct explanation of the assertion

C. If the assertion is true but the reason is  
false

D. If both the assertion and reason are  
false

**Answer: D**



**Watch Video Solution**

**409.** Assertion : New world and old world  
monkeys are alike.

Reason : Old world monkeys are closer to man

A. If both the assertion and the reason are true and the reason is a correct explanation of the assertion

B. If both the assertion and reason are true but the reason is not a correct explanation of the assertion

C. If the assertion is true but the reason is false

D. If the assertion is false but reason is true

**Answer: D**



Watch Video Solution

**410.** Assertion : The theory of survival of the fittest is widely misunderstood.

Reason : Evolution does not always increase the chances of a species survival and species do not survive when much changes happen rapidly.

A. If both the assertion and the reason are true and the reason is a correct explanation of the assertion

B. If both the assertion and reason are true but the reason is not a correct explanation of the assertion

C. If the assertion is true but the reason is false

D. If both the assertion and reason are false

**Answer: A**



**Watch Video Solution**



**411.** Assertion : All primates have a common ancestry.

Reason : The most primate was shrew like animals.

A. If both the assertion and the reason are true and the reason is a correct explanation of the assertion

B. If both the assertion and reason are true but the reason is not a correct explanation of the assertion

C. If the assertion is true but the reason is false

D. If both the assertion and reason are false

**Answer: B**



**Watch Video Solution**

**412.** Assertion : Most evolutionary trees place information about the pattern of relationship among organisms on the vertical axis and

information about time on the horizontal axis.

Reason : An evolutionary trees depicts the pattern of relationships among parents and their offsprings.

A. If both the assertion and the reason are true and the reason is a correct explanation of the assertion

B. If both the assertion and reason are ture but the reason is not a correct explanation of the assertion

C. If the assertion is true but the reason is false

D. If both the assertion and reason are false

**Answer: D**



**Watch Video Solution**

**413.** Assertion : Chimpanzee is the closest relative of present day humans.

Reason : The banding pattern in the autosome number 3 and 6 are remarkably similar.

A. If both the assertion and the reason are true and the reason is a correct explanation of the assertion

B. If both the assertion and reason are true but the reason is not a correct explanation of the assertion

C. If the assertion is true but the reason is false

D. If both the assertion and reason are  
false

**Answer: A**



**Watch Video Solution**

**414.** Assertion : *Dryopithecus africanus* is a common ancestor of man and great apes.

Reason : It gave rise to *Ramapithecus*.

A. If both the assertion and the reason are true and the reason is a correct explanation of the assertion

B. If both the assertion and reason are true but the reason is not a correct explanation of the assertion

C. If the assertion is true but the reason is false

D. If both the assertion and reason are false

**Answer: B**



**Watch Video Solution**

**415.** Assertion : Cro-magnon man has more intelligence than the man of present time.

Reason : He is regarded as most recent ancestor of today's man.

A. If both the assertion and the reason are true and the reason is a correct explanation of the assertion



B. If both the assertion and reason are true but the reason is not a correct explanation of the assertion

C. If the assertion is true but the reason is false

D. If both the assertion and reason are false

**Answer: B**



**Watch Video Solution**

**416.** Assertion : Mutations cause evolution.

Reason : Ancon sheep and hornless cattle are developed by inducing mutation.

A. If both the assertion and the reason are true and the reason is a correct explanation of the assertion

B. If both the assertion and reason are true but the reason is not a correct explanation of the assertion

C. If the assertion is true but the reason is false

D. If both the assertion and reason are false

**Answer: B**



**Watch Video Solution**

**417.** Assertion : Darwin's finches show a variety of beaks and cactus seeds.

Reason : Ancestral seed-eating stock of

Darwin's finches radiated out from South American mainland to different geographical areas of the Galapagos Island, where they found competitor-free new habitats.

A. If both the assertion and the reason are true and the reason is a correct explanation of the assertion

B. If both the assertion and reason are true but the reason is not a correct explanation of the assertion

C. If the assertion is true but the reason is false

D. If both the assertion and reason are false

**Answer: A**



**Watch Video Solution**

**418.** Assertion : Geographical isolation brings about sympatric speciation.

Reason : Reproductive isolation brings about allopatric speciation.

A. If both the assertion and the reason are true and the reason is a correct explanation of the assertion

B. If both the assertion and reason are true but the reason is not a correct explanation of the assertion

C. If the assertion is true but the reason is false

D. If both the assertion and reason are false

**Answer: D**



**Watch Video Solution**

**419.** Assertion : Homo habilis was the first tool maker.

Reason : He was cave-dweller.

A. If both the assertion and the reason are true and the reason is a correct explanation of the assertion

B. If both the assertion and reason are true but the reason is not a correct explanation of the assertion

C. If the assertion is true but the reason is false

D. If both the assertion and reason are false



**Answer: B**



**Watch Video Solution**

**420.** Assertion : Formation of new species is called speciation.

Reason : The deme has a common gene pool.

A. If both the assertion and the reason are true and the reason is a correct explanation of the assertion

B. If both the assertion and reason are true but the reason is not a correct explanation of the assertion

C. If the assertion is true but the reason is false

D. If both the assertion and reason are false

**Answer: B**



**Watch Video Solution**

**421.** Assertion : Comparative biochemistry provides a strong evidence in favour of common ancestry of living beings.

Reason : Genetic code is universal.

A. If both the assertion and the reason are true and the reason is a correct explanation of the assertion

B. If both the assertion and reason are true but the reason is not a correct explanation of the assertion

C. If the assertion is true but the reason is false

D. If both the assertion and reason are false

**Answer: B**



**Watch Video Solution**

**422.** Assertion : Atavism is the reappearance of disappeared ancestral characters.

Reason : Third molars and hair on body are examples of atavism.

A. If both the assertion and the reason are true and the reason is a correct explanation of the assertion

B. If both the assertion and reason are true but the reason is not a correct explanation of the assertion

C. If the assertion is true but the reason is false

D. If both the assertion and reason are  
false

**Answer: C**



**Watch Video Solution**

**423.** Assertion : Evolution of man is the example of progressive evolution.

Reason : Tapeworm is developed due to retrogressive evolution.

A. If both the assertion and the reason are true and the reason is a correct explanation of the assertion

B. If both the assertion and reason are true but the reason is not a correct explanation of the assertion

C. If the assertion is true but the reason is false

D. If both the assertion and reason are false

**Answer: B**



**Watch Video Solution**

**424.** Assertion : Human ancestors never used their tails and so the tails expressing gene has disappeared in them.

Reason : Lamarck's theory of evolution is popularly called theory of continuity of germ plasm.



A. If both the assertion and the reason are true and the reason is a correct explanation of the assertion

B. If both the assertion and reason are true but the reason is not a correct explanation of the assertion

C. If the assertion is true but the reason is false

D. If both the assertion and reason are false

**Answer: D**



**Watch Video Solution**

**425.** Assertion : Petrified fossils contain hard parts of organisms.

Reason : Moulds and casts lack the remains of organisms.

A. If both the assertion and the reason are true and the reason is a correct explanation of the assertion

B. If both the assertion and reason are true but the reason is not a correct explanation of the assertion

C. If the assertion is true but the reason is false

D. If both the assertion and reason are false

**Answer: B**



**Watch Video Solution**

**426.** Geologically one of the following eras is known as "golden age of Reptiles" or "Golden age of Dinosaurs"

A. Mesozoic

B. Cenozoic

C. Palaeozoic

D. None of the above

**Answer: A**



**Watch Video Solution**

**427.** How many years are considered in one minute in Geological clock

- A. 52,000 years
- B. 1,87,500,000 years
- C. 3,25,000 years
- D. 1,90,000 years

**Answer: D**



**Watch Video Solution**

**428.** Species diversity generally increases as one proceeds from

A. Low altitude to high altitude, and from low latitude to high latitudes

B. High altitude to low altitude, and from low latitudes to high latitudes

C. High altitudes to low altitudes, and from high latitudes to low latitudes

D. Low altitudes to high altitudes, and from high latitudes to low latitudes

**Answer: C**



**Watch Video Solution**

**429.** What is correct

A. Natural selection is responsible for extinction of dinosaurs

B. Lion and leopard have convergent evolution

C. Homo habilis and homo erectus are  
closely related

D. Biston betularia shows cryptic  
camouflage

**Answer: D**



**Watch Video Solution**

**430.** To be evolution of successful, a mutation  
must occur in



A. Germplasm DNA

B. Somatoplasm DNA

C. RNA

D. Cytoplams

**Answer: A**



**Watch Video Solution**

**431.** Hardy and weinberg principle explaints

A. Genetic equilibrium

B. Non random mating

C. Evolutionary force

D. All of the above

**Answer: A**



**Watch Video Solution**

**432.** In case of evolution which of the following statements is not correct

A. Fossilized animals provided important information to trace evolution

B. Wing of birds and forelimbs of cows are homologous

C. In higher animals early development stages are similar

D. Variation among individuals are not important in natural selection

**Answer: A**



**Watch Video Solution**

**433.** Homeostasis is

A. Disturbance in regulatory control

B. Tendency to resist internal changes

C. Plant and animal extracts used in  
homeopathy

D. A tendency to change with change in  
environment

**Answer: B**



Watch Video Solution

**434.** What does the term 'reproductive isolation' refers to

A. An individual is unable to fertilise itself

B. Genes are not exchanged between two population

C. Individuals from two population never mate

D. Individuals from two populations never produce offsprings

**Answer: B**



**Watch Video Solution**

**435.** When two related populations occupy geographically or spatially separate areas, they are called.

OR

The organisms separated by geographical barriers are termed

- A. Allopatric population
- B. Quantum population
- C. Saltational population
- D. Parapatric population

**Answer: A**



**Watch Video Solution**

**436.** Major radiation of mammals birds and pollinating insects took place in which epoch

A. oligocene

B. eocene

C. pliocene

D. paleocene

**Answer: D**



**Watch Video Solution**