



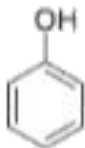
CHEMISTRY

BOOKS - KVPY PREVIOUS YEAR

KVPY 2021

Part I Chemistry

1. The acidity is



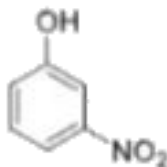
I



II

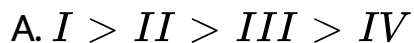


III



IV

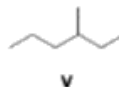
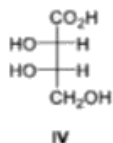
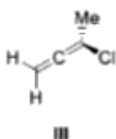
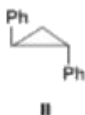
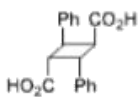
follows the order



Answer:

 Watch Video Solution

2. Among the following



the compound which can exhibit optical activity are :

A. only II , IV and V

B. only IV and V

C. only I , II and IV

D. only I , II and IV

Answer:



[Watch Video Solution](#)

3. A molecule which has 1° , 2° and 3° carbon atom is :

A. 2 , 3 , 4-trimethylpentane

B. chlorocyclohexane

C. 2,2-dimethylcyclohexane

D. methylcyclohexane

Answer:



Watch Video Solution

4. Which of the following can be purified by steam distillation?

A. acetone

B. aniline

C. glucose

D. ethanol

Answer:

 [Watch Video Solution](#)

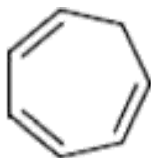
5. Among the following the most acidic compound is :



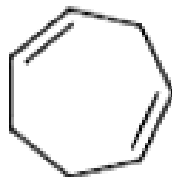
A.



B.



C.



D.

Answer:

 [Watch Video Solution](#)

6. A closed 10 L vessel contains 1 L water gas (1:1 $CO:H_2$) and 9 L air (20 % O_2 by volume) at STP . The contents of the vessel are ignited . The number of moles of CO_2 in the vessel is closed to :

A. 0.22

B. 0.022

C. 0.90

D. 3.60

Answer:



[Watch Video Solution](#)

7. A certain metal has a work function of $\Phi = 2 \text{ eV}$. It is irradiated first with 1 W of 400 nm light and later with 1 W of 800 nm light. Among the following, the correct statement is :

[Given : Planck constant (h) = $6.626 \times 10^{-34} \text{ m}^2 \text{ kgs}^{-1}$,

Speed of light (c) = $3 \times 10^8 \text{ ms}^{-1}$]

- A. Both colors of light give rise to same number of photoelectrons
- B. 400 nm light gives rise to less energetic photoelectrons than 800 nm light
- C. 400 nm light leads to more photoelectrons
- D. 800 nm light leads to more photoelectrons

Answer:



Watch Video Solution

8. Among the following the correct statement about the chemical equilibrium is :

A. Equilibrium constant is independent of temperature

B. Equilibrium constant tells us how fast the reaction reaches equilibrium

C. At equilibrium the forward and the backward reaction stop so that concentrations of reactants and products are constant

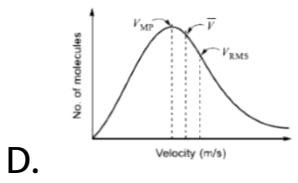
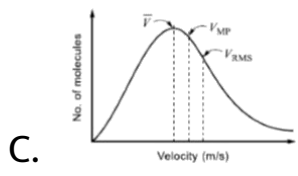
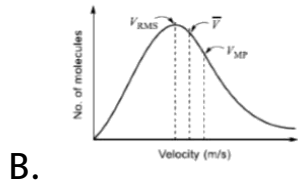
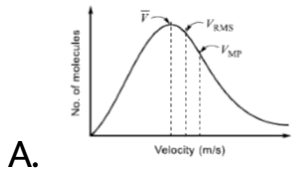
D. Equilibrium constant is independent of whether you start the reaction with reactants or products .

Answer:



Watch Video Solution

9. Among the following , the plot that shows the correct marking of most probable velocity (V_{MP}) average velocity (\vec{V}) and root mean square velocity (V_{RMS}) is :



Answer:

 [Watch Video Solution](#)

10. The correct set of quantum numbers for the unpaired electron of Cu atom is :

A. $n = 3, l = 2, m = -2, s = +\frac{1}{2}$

B. $n = 3, l = 2, m = +2, s = -\frac{1}{2}$

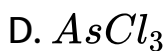
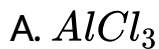
C. $n = 4, l = 0, m = 0, s = +\frac{1}{2}$

D. $n = 4, l = 1, m = +1, s = +\frac{1}{2}$

Answer:

 [Watch Video Solution](#)

11. Among the following, the most polar molecule is :

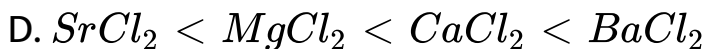
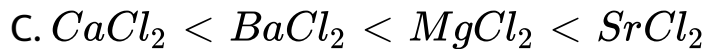
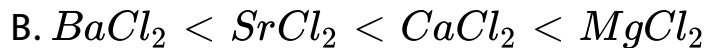
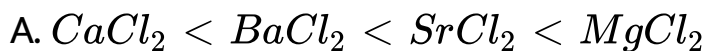


Answer:



Watch Video Solution

12. The covalent characters of $CaCl_2$, $BaCl_2$, $SrCl_2$ and $MgCl_2$ follow the order :



Answer:



Watch Video Solution

13. Among the following, the correct statement is :

A. 100. has four significant figures

B. 1.00×10^2 has four significant figures

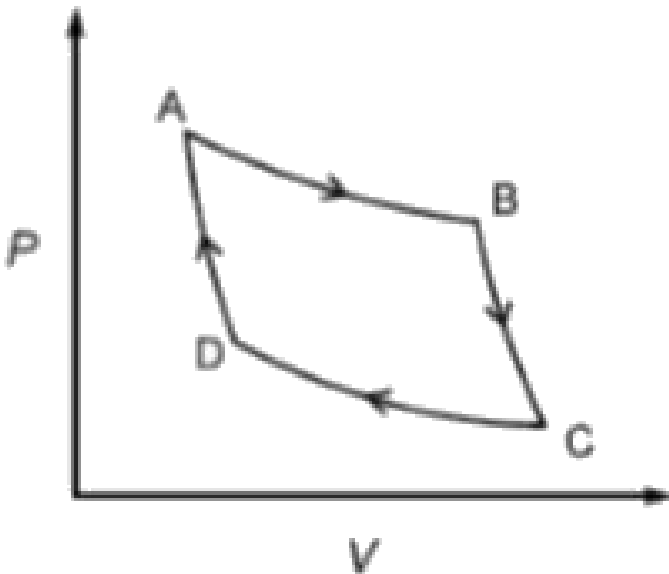
C. 2.005 has four significant figures

D. 0.0025 has four significant figures

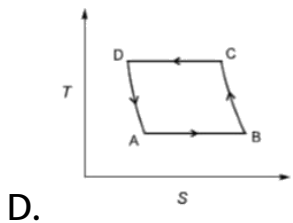
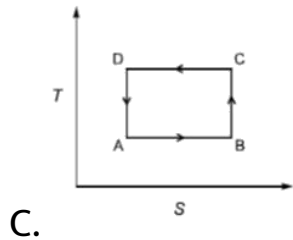
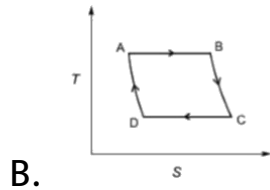
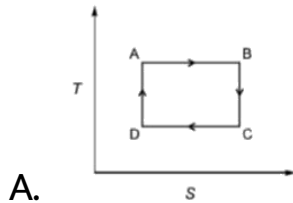
Answer:

 [Watch Video Solution](#)

14. A thermodynamic cycle in the pressure (P) - volume (V) plane is given below :



AB and CD are isothermal processes while BC and DA are adiabatic processes. The same cycle in the temperature (T) - entropy (S) plane is :



Answer:

 [Watch Video Solution](#)

15. The first ionization potential (IP) of the elements Na, Mg, Si, P, Cl and Ar are 5.14, 7.65, 8.15, 10.49, 12.97 and 15.76 eV, respectively. The IP (in eV) of K is closest to :

- A. 13.3
- B. 18.2
- C. 4.3
- D. 6.4

Answer:





Watch Video Solution

16. Which ONE of the following chemicals serves as a substrate for carbonic anhydrase ?

A. O_2

B. CO_2

C. NO_2

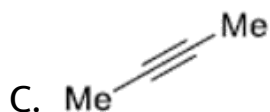
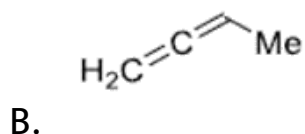
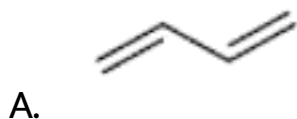
D. CO

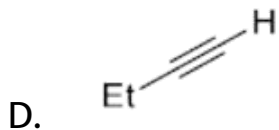
Answer:



Watch Video Solution

1. A hydrocarbon X with molecular formula C_4H_6 decolorizes bromine water and forms a white precipitate in ethanolic $AgNO_3$ solution. Treatment of X with $HgCl_2$ in aqueous H_2SO_4 produces a compound, which gives a yellow precipitate when treated with I_2 and NaOH. The structure of X is :



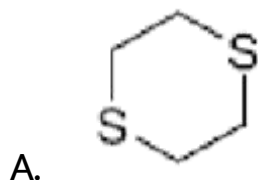


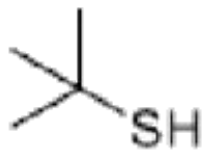
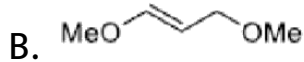
Answer:

 [Watch Video Solution](#)

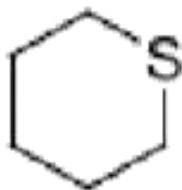
2. 0.102 g of an organic compound X was oxidized with fuming nitric acid. The resulting solution, after reaction with an excess of aqueous $BaCl_2$ produced 0.233 g of $BaSO_4$ as a precipitate, compound X is likely to be :

[Given : Atomic wt. of Ba = 137]





C.



D.

Answer:

 [Watch Video Solution](#)

3. The specific heat of a certain substance is $0.86 \text{ Jg}^{-1}\text{K}^{-1}$. Assuming ideal solution behavior. The energy required (in J) to heat 10 g of 1 molal of its

aqueous solution from 300 K is closed to :

[Given molar mass of the substance = 58 g mol^{-1} ,

specific heat of water = $4.2 \text{ J g}^{-1} \text{ K}^{-1}$]

A. 401.7

B. 424.7

C. 420

D. 86

Answer:

 [Watch Video Solution](#)

4. Strength of a H_2O_2 solution is labelled as 1.79 N. its strength can also be expressed as closest to :

A. 20 volume

B. 5 volume

C. 10 volume

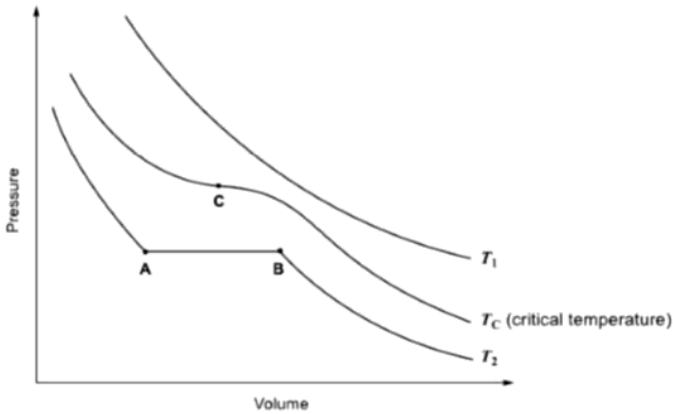
D. 15 volume

Answer:



Watch Video Solution

5. The isotherms of a gas are shown below :



Among the following

(i) At T_1 , the gas cannot be liquified

(ii) At point B, liquid starts to appear at T_2

(iii) T_C is the highest temperature at which the gas can be liquified

(iv) At point A , a small increase in pressure condense the whole system to a liquid.

teh correct statements are :

A. only(i) and (ii)

B. only (i) (iii) and (iv)

C. only (ii),(iii) and (iv)

D. (i) , (ii), (iii) and (iv)

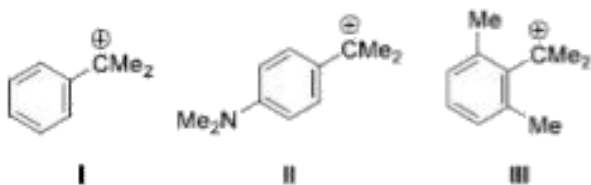
Answer:



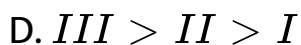
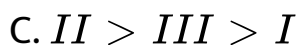
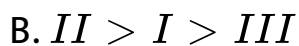
Watch Video Solution

Part I Chemistry

1. The stability of



follows the order :



Answer:

 [Watch Video Solution](#)

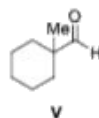
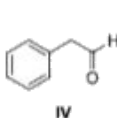
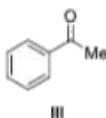
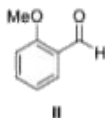
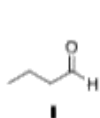
2. Among the following, the biodegradable polymer is :

- A. polylactic acid
- B. polyvinyl chloride
- C. bakelite
- D. teflon

Answer:

 [Watch Video Solution](#)

3. Among the following,



the compounds which can be reduced with formaldehyde and conc.aq. KOH, are :

- A. only II and V
- B. only I and V
- C. only II and III
- D. only I, II and IV

Answer:

 [Watch Video Solution](#)

4. An organic compound that is commonly used for sanitizing surfaces is :

A. acetylsalicylic acid

B. chloramphenicol

C. aspartame

D. cetyltrimethyl ammonium bromide

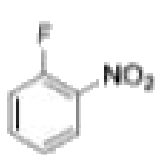
Answer:



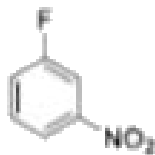
Watch Video Solution

5. The rates of reaction of NaOH with

The rates of reaction of NaOH with



I



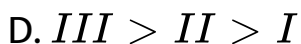
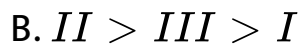
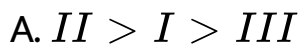
II



III

follow the order:

follow the order :



Answer:

 [Watch Video Solution](#)

6. The best reagent for converting, 2-phenylpropanamide into 1-phenylethanamine is....

A. $H_2, Pd / C$

B. $Br_2, NaOH$

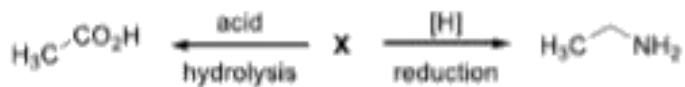
C. $LiAlH_4, Et_2O$

D. $NaBH_4, MeOH$

Answer:

 [Watch Video Solution](#)

7. The compound X in the following reaction scheme



is :

- A. acetonitrile
- B. methyl isocyanide
- C. acetaldehyde
- D. nitromethane

Answer:



[Watch Video Solution](#)

8. A nucleus X captures a β particle and then emits a neutron and γ ray to form Y.

A. isomorphs

B. isotopes

C. isobars

D. isotones

Answer:

 [Watch Video Solution](#)

9. The boiling point (in $^{\circ}C$) of 0.1 molal aqueous solution of $CuSO_4 \cdot 5H_2O$ at 1 bar is closest to :

[Given : Ebullioscopic (molal boiling point elevation)

constant of water, $K_b = 0.512 \text{ K Kg mol}^{-1}$]

A. 100.36

B. 99.64

C. 100.1

D. 99.9

Answer:



Watch Video Solution

10. A weak acid is titrated with a weak base. Consider the following statements regarding the pH of the solution at the equivalence point :

(i) pH depends on the concentration of acid and base.

(ii) pH is independent of the concentration of acid and base.

(iii) pH depends on the pK_a of acid and pK_b of base.

(iv) pH is independent of the pK_a of acid and pK_b of base.

The correct statements are :

A. only (i) and (iii)

B. only (i) and (iv)

C. only (ii) and (iii)

D. only (ii) and (iv)

Answer:



Watch Video Solution

11. Products are favored in a chemical reaction taking place at a constant temperature and pressure. Consider the following statements :

(i) The change in Gibbs energy for the reaction is negative.

(ii) the total change in Gibbs energy for the reaction and the surroundings is negative.

(iii) The change in entropy for the reaction is positive.

(iv) The total change in entropy for the reaction and the surrounding is positive.

The statements which are ALWAYS true are :

A. only (i) and (iii)

B. only (i) and (iv)

C. only (ii) and (iv)

D. only (ii) and (iii)

Answer:



Watch Video Solution

12. A mixture of toluene and benzene forms a nearly ideal solution. Assume P_B° and P_T° to be the vapor pressures of pure benzene and toluene, respectively. The slope of the line obtained by plotting the total vapor pressure to the mole fraction of benzene is :

A. $P_B^\circ - P_T^\circ$

B. $P_T^\circ - P_B^\circ$

C. $P_B^\circ + P_T^\circ$

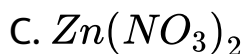
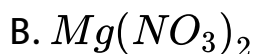
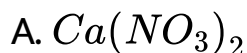
D. $(P_B^\circ + P_T^\circ) / 2$

Answer:



Watch Video Solution

13. Upon dipping a copper rod, the aqueous solution of the salt that can turn blue is:



D. $AgNO_3$

Answer:



Watch Video Solution

14. Treatment of alkaline $KMnO_4$ solution with KI solution oxidizes iodide to:

A. I_2

B. IO_4^-

C. IO_3^-

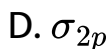
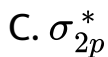
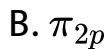
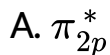
D. IO_2^-

Answer:



Watch Video Solution

15. If an extra electron is added to the hypothetical molecule C_2 this extra electron will occupy the molecular orbital:

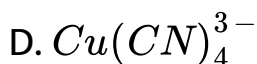
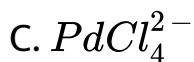
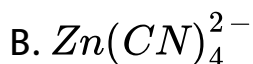
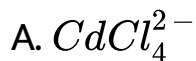


Answer:



Watch Video Solution

16. Among the following the square planar geometry is exhibited by:



Answer:

 [Watch Video Solution](#)

17. The correct pair of orbitals involved in π -bonding between metal and CO in metal carbonyl complexes is:

A. metal d_{xy} and carbonyl π_x^*

B. metal d_{xy} and carbonyl π_t

C. metal $d_{x^2 - y^2}$ and carbonyl π_x^*

D. metal $d_{x^2 - y^2}$ and carbonyl π_x

Answer:



Watch Video Solution

18. The magnetic moment (in μ_B) of $[\text{Ni}(\text{dimethylglyoximate})_2]$ complex is closest to:

A. 5.37

B. 0.00

C. 1.73

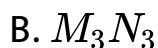
D. 2.25

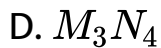
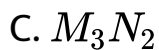
Answer:



[Watch Video Solution](#)

19. A compound is formed by two elements M and N. Element N forms hexagonal closed pack array with $\frac{2}{3}$ of the octahedral holes occupied by M. The formula of the compound is:





Answer:



Watch Video Solution

20. If the velocity of the revolving electron of He^+ in the first orbit ($n=1$) is v . the velocity of the electron in the second orbit is:

A. v

B. $0.5v$

C. $2v$

D. $0.25v$

Answer:



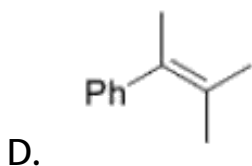
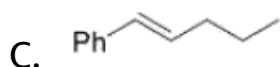
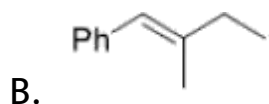
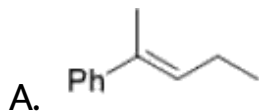
[Watch Video Solution](#)

Part II Chemistry

1. An organic compound X with molecular formula $C_{11}H_{14}$ gives an optically active compound on hydrogenation. Upon ozonolysis, X produces a mixture of compounds - P and Q, Compound P gives a yellow precipitate when treated with I_2 and NaOH but does not reduce Tollens' reagent. Compound Q does not give any yellow precipitate with I_2 and NaOH but gives Fehling's

test. The compound X Q does not give any yellow precipitate with I_2 and NaOH but gives Fehling 's test .

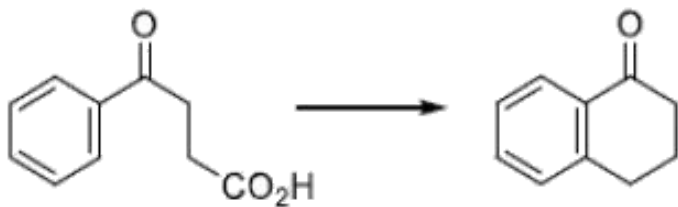
The compound X is



Answer:

 [Watch Video Solution](#)

2. The following transformation



can be carried out in three steps. The reagents required for these three steps in their correct order. Are :

A. (i) $NaBH_4$, (ii) PCl_5 , (iii) *anh.* $AlCl_3$

B. (i) $SOCl_2$, (ii) *anh.* $AlCl_3$, (iii) $Zn(Hg) / HCl$

C. (i) $Zn(Hg) / HCl$, (ii) $SOCl_2$, (iii) *anh.* $AlCl_3$

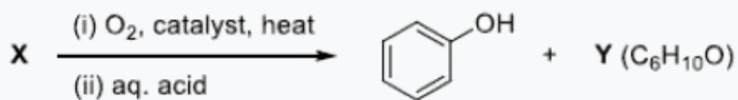
D.

(i) *conc.* H_2SO_4 , (ii) $H_2N - NH_2 \cdot H_2O$, (iii) KOH ,

ethylene glycol, Δ

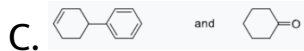
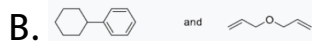
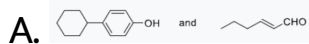
Answer:

 Watch Video Solution



3.

X and Y, respectively, are :

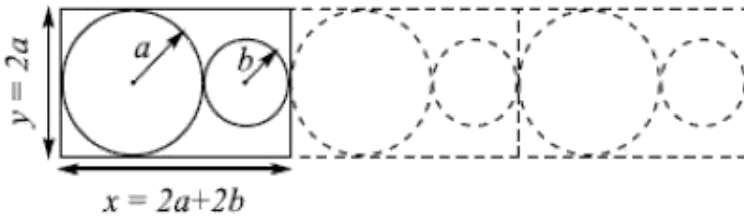


Answer:



Watch Video Solution

4. A two-dimensional solid is made by alternating circles with radius a and b such that the sides of the circles touch. The packing fraction is defined as the ratio of the area under the circles to the area under the rectangle with sides of the length x and y .



The ratio $r = b/a$ for which the packing fraction is minimized is closed to :

A. 0.41

B. 1

C. 0.5

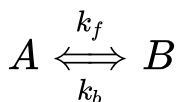
D. 0.32

Answer:



Watch Video Solution

5. Consider a reaction that is first order in both direction



Initially only A is present, and its concentration is A_0 .

Assume A_t and A_{eq} are the concentrations of A at time

't' and at equilibrium, respectively. The time 't' at which

$$A_t = (A_0 + A_{eq}) / 2 \text{ is,}$$

$$\text{A. } t = \frac{\ln\left(\frac{3}{2}\right)}{(k_f + k_b)}$$

$$\text{B. } t = \frac{\ln\left(\frac{3}{2}\right)}{(k_f - k_b)}$$

$$\text{C. } t = \frac{\ln 2}{(k_f + k_b)}$$

$$\text{D. } t = \frac{\ln 2}{(k_f + k_b)}$$

Answer:



Watch Video Solution

6. The reaction

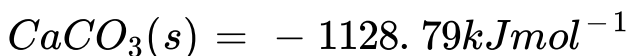
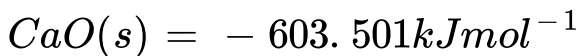


is in equilibrium in a closed vessel at 298 K . The partial pressure (in atm) of CO_2 (g) in the reaction vessel is

closest to :

[Given : the change in Gibbs energies of formation at

298 K and 1 bar for



Gas constant $R = 8.314 JK^{-1} mol^{-1}$]

A. 1.13×10^{-23}

B. 0.95

C. 1.05

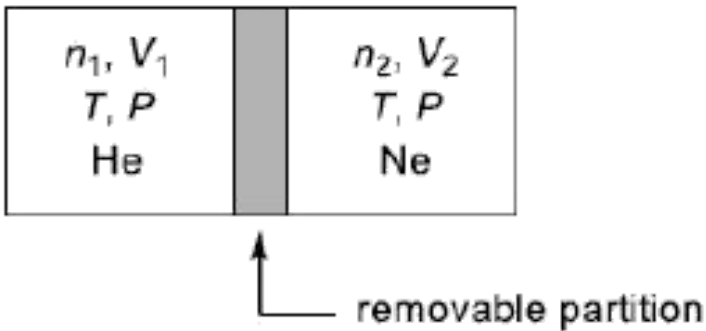
D. 8.79×10^{23}

Answer:



Watch Video Solution

7. A container is divided into two compartments by a removable partition as shown below :



In the first compartment n_1 moles of ideal gas He is present in a volume V_1 . In the second compartment, n_2 moles of ideal gas Ne is present in a volume V_2 . The temperature and pressure in both the compartments are T and P respectively. Assuming R is the gas constant. the total change in entropy upon removing the partition when the gases mix irreversibly is :

$$\text{A. } n_1 R \ln \frac{v_1}{v_1 + v_2} + n_2 R \ln \frac{v_2}{v_1 + v_2}$$

$$\text{B. } n_1 R \ln \frac{v_1 + v_2}{v_1} + n_2 R \ln \frac{v_1 + v_2}{v_2}$$

$$\text{C. } (n_1 + n_2) R \ln \frac{n_1 v_1}{n_2 v_2}$$

$$\text{D. } (n_1 + n_2) R \ln \frac{n_2 v_2}{n_1 v_1}$$

Answer:



Watch Video Solution

8. Number of stereoisomers possible for the octahedral complexes $[Co(NH_3)_3Cl_3]$ and $[Ni(en)_2Cl_2]$

, respectively, are : [en = 1,2-ethylenediamine]

A. 2 and 4

B. 4 and 3

C. 3 and 2

D. 2 and 3

Answer:



Watch Video Solution

9. When a mixture of NaCl , $\text{K}_2\text{Cr}_2\text{O}_7$ and conc. H_2SO_4 is heated in a dry test tube, a red vapour (X) is evolved. This vapour (X) turns an aqueous solution of NaOH yellow due to the formation of Y. X and Y, respectively, are:

A. CrCl_3 and $\text{Na}_2\text{Cr}_2\text{O}_7$

B. $CrCl_3$ and Na_2CrO_4

C. CrO_2Cl_2 and Na_2CrO_4

D. $Cr_2(SO_4)_3$ and $Na_2Cr_2O_7$

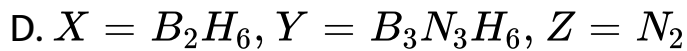
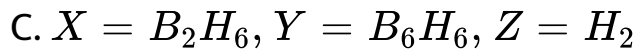
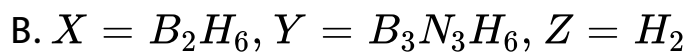
Answer:



Watch Video Solution

10. Sodium borohydride upon treatment with iodine produces a Lewis acid (X), which on heating with ammonia produces a cyclic compound (Y) and a colorless gas (Z). X, Y and Z are:

A. $X = BH_3$, $Y = BH_3NH_3$, $Z = N_2$



Answer:



Watch Video Solution