



BIOLOGY

BOOKS - GR BATHLA & SONS BIOLOGY (HINGLISH)

ADOLESCENCE AND DRUGS/ALCOHOL ABUSE

Multiple Choices Questions

1. Which one of the following is a mental illness?

- A. Epilepsy
- B. Neurosis
- C. Psychosis
- D. All of these

Answer: D



Watch Video Solution

2. Which of the following is not a mental disorder?

- A. Neurosis
- B. Epilepsy
- C. Meningitis
- D. psychosis

Answer: C

 Watch Video Solution

3. Which of the following is equivalent to madness?

- A. Epilepsy
- B. Psychosis
- C. Neurosis

D. All of these

Answer: B



Watch Video Solution

4. Which one is a severe mental disorder?

A. Epilepsy

B. Psychosis

C. Neurosis

D. All of these

Answer: C



Watch Video Solution

5. Which of the following is a Psychotic symptom?

- A. Delusions
- B. Mania
- C. Depression
- D. All of these

Answer: D

 [Watch Video Solution](#)

6. Phobias are generally associated with:

- A. neurosis
- B. epilepsy
- C. Psychosis
- D. none of these

Answer: A

 [Watch Video Solution](#)

7. Which type of people complain of vague aches?

- A. Psychotic
- B. Neurotic
- C. Epileptic
- D. All of these

Answer: B



[Watch Video Solution](#)

8. Which type of mental disorder is characterized by fits of convulsion?

- A. Neurosis
- B. Psychosis
- C. Epileptic

D. none of these

Answer: C



Watch Video Solution

9. The symptoms of epilepsy are:

A. foaming at mouth

B. stiffening of the body

C. loss of consciousness

D. All of the about

Answer: D



Watch Video Solution

10. A tendency of recurrent seizures is known as :

A. epilepsy

B. neurosis

C. Psychosis

D. none of these

Answer: A



Watch Video Solution

11. Shock treatment (ECT) is suited for the treatment of :

A. smoking

B. alcoholism

C. mental disorders

D. none of these

Answer: C



Watch Video Solution

12. mental depression is caused by diminished activity of :

- A. dopamine
- B. norepinephrine
- C. histamine
- D. all of these

Answer: B



Watch Video Solution

13. Central Institute of mental Reterdation (CIMR) is situated at:

- A. Agra
- B. New Delhi
- C. Guwahati

D. Triuvananthapuram

Answer: D

 [Watch Video Solution](#)

14. The initial stage of the drug addiction called:

- A. tolerance
- B. dependence
- C. habituation
- D. all of these

Answer: C

 [Watch Video Solution](#)

15. The final stage of drug addiction leads to :

- A. drug immunity
- B. drug dependence
- C. drug resistance
- D. all of these

Answer: B

 [Watch Video Solution](#)

16. The use of tobacco was originated in :

- A. America
- B. India
- C. Australia
- D. Germany

Answer: A

 [Watch Video Solution](#)

17. Tobacco smoke contains:

- A. tar
- B. carbon monoxide
- C. Polycyclic aromatic hydrocarbon
- D. All of the about

Answer: D



[Watch Video Solution](#)

18. Which component of tabacco smoke is carcinogenic?

- A. Carbon monoxide
- B. Nicotine
- C. Polycyclic aromatic hydrocarbons

D. (d)Both (b) and (c)

Answer: D



[Watch Video Solution](#)

19. Smoking of tobacco adds:

A. carbon dioxide

B. sulphur dioxide

C. carbon monoxide

D. none of these

Answer: C



[Watch Video Solution](#)

20. Smoking addiction is harmful because it produces polycyclic aromatic hydrocarbons which cause :

- A. cancer
- B. increase in blood sugar level
- C. reduction in oxygen transport
- D. reterdation of growth of foetus

Answer: A



[Watch Video Solution](#)

21. Which of the following diseases is associated with smoking?

- A. Bronchitis
- B. Emphysema
- C. Lung cancer
- D. All of these

Answer: D



Watch Video Solution

22. Tobacco contain:

A. codenine

B. nicotine

C. morphine

D. cocaine

Answer: B



Watch Video Solution

23. The substance that causes addiction to tabacco is:

A. nicotine

B. cocaine

C. caffeine

D. none of these

Answer: A



Watch Video Solution

24. Nicotine can cause:

A. cramps

B. vomiting

C. diarrhoea

D. all of these

Answer: D



Watch Video Solution

25. Benzopyrene is found in :

- A. tomato
- B. alcohol
- C. tobacco
- D. brinjal

Answer: C



Watch Video Solution

26. Tobacco smokers have an increased risk of:

- A. lung cancer
- B. kidney cancer
- C. bladder cancer
- D. all of these

Answer: D



[Watch Video Solution](#)

27. World Health Day is celebrated every year on

A. 43616

B. 43643

C. 43577

D. 43800

Answer: A



[Watch Video Solution](#)

28. Smoking leads to the hypersecretion of:

A. serotonin

B. thyroxine

C. adrenaline

D. histamine

Answer: C



Watch Video Solution

29. Central Tobacco Research Institute is situated at:

A. Bangalore

B. Nagpur

C. Rajahmundry

D. Hyderabad

Answer: C



Watch Video Solution

30. Tunnel vision' is associated with:

- A. smoking
- B. mental health
- C. alcoholism
- D. drug addiction

Answer: C



Watch Video Solution

31. The factor that contributes most to the development of cirrhosis is:

- A. alcoholism
- B. high blood sugar
- C. high blood urea
- D. high cholesterol

Answer: A

 [Watch Video Solution](#)

32. Alcohol is the most socially accepted narcotic drug. Excessive consumption of alcohol leads to:

- A. loss of memory
- B. cirrosis of liver
- C. state of hallucination
- D. suppression of brain function

Answer: B

 [Watch Video Solution](#)

33. The factore responsible for cirrhosis of liver is

 [Watch Video Solution](#)

34. Fatty liver is syndrome ' is associated with:

- A. smoking
- B. alcoholism
- C. drug addiction
- D. all of these

Answer: B



[Watch Video Solution](#)

35. In alcoholics, liver gets damaged as it:

- A. secretes more bile
- B. stores excess of glycogen
- C. accumulates excess of fats

D. All of the above

Answer: C



Watch Video Solution

36. Alcohol addiction harmful because it causus:

- A. cancer
- B. rise in blood suger level
- C. deposition of protein in liver
- D. deposition of extra fat in liver

Answer: D



Watch Video Solution

37. The liver damage by alcohol is due to:

- A. fat deposition in liver
- B. overload of detoxification
- C. cancerous growth in liver
- D. higher levels of sugar consumption by liver

Answer: A

 [Watch Video Solution](#)

38. Alcohol adversely affects:

- A. reaction time
- B. alertness
- C. coordination of lowers blood:
- D. all of these

Answer: D

 [Watch Video Solution](#)

39. Alcohol addiction lowers blood:

- A. suger
- B. cholesterol
- C. calcium
- D. all of these

Answer: A



Watch Video Solution

40. Consider the following statements: Assertion (A) : Most of the detoxification reactions of drugs and alcohol take place in the liver cells.

Reason (R) : The smooth ER of liver cells contains an oxidase called cytochroma P-450. Select the answer using the codes given below: Answer codes:

- A. Both (A) and (R) are true and (R) is the correct explanation of (A)
- B. Both (A) and (R) are true but (R) is not the correct explanation of (A)
- C. (A) is true but (R) is false
- D. (A) is false but (R) is true

Answer: A

 [Watch Video Solution](#)

41. The effect of alcohol on the CNS is as a:

- A. stimulant
- B. promoter
- C. depressant
- D. none of these

Answer: C

 [Watch Video Solution](#)

42. Which part of the brain is most affected by the alcohol ?

- A. Cerebrum
- B. Pons varolii
- C. Carebellum
- D. Medulla oblongata

Answer: C



Watch Video Solution

43. The heavy drinkers are often dehydrated due to:

- A. lack of metabolism
- B. hypersecretion of ADH
- C. hyposecretion of ADH

D. high rate of metabolism

Answer: B



Watch Video Solution

44. "Alcohol provokes the desire but takes away the performance" is a statement with reference to the effect of alcohol on sexual behaviour by:

A. John Keats

B. Leo Tolstoy

C. William Shakespeare

D. George Bernard Shaw

Answer: C



Watch Video Solution

45. Driving after drinking is not advised due to intoxication:

- A. judgement and coordination disturb
- B. affects vision and behaviour
- C. reaction time delays
- D. All of the above

Answer: D



Watch Video Solution

46. Assertion (A) : Dope test is used to estimate the level of blood alcohol by analyzing the breath of persons drinking alcohol. Reason (R) : A drunken person usually feels tense and is less talkative.

- A. Both (A) and (R) are true and (R) is the correct explanation of (A)
- B. Both (A) and (R) are true but (R) is not the correct explanation of (A)
- C. (A) is true but (R) is false

D. Both(A) and (R) are false

Answer: D

 [Watch Video Solution](#)

47. Assertion (A): Alcohol acts as sedative. Reason (R): Sweating is enhanced by alcohol and so it is endothermic .

- A. Both (A) and (R) are true and (R) is the correct explanation of (A)
- B. Both (A) and (R) are true but (R) is not the correct explanation of (A)
- C. (A) is true but (R) is false
- D. Both(A) and (R) are false

Answer: C

 [Watch Video Solution](#)

48. Korsakoff's syndrome is related to:

- A. alcohol abuse
- B. drug abuse
- C. smoking abuse
- D. none of these

Answer: A



Watch Video Solution

49. mood altering drug are:

- A. analgesic
- B. psychotropic
- C. antipyretic
- D. allergen

Answer: B



Watch Video Solution

50. Cental Drug Research Institute is situated at:

- A. Kanpur
- B. Lucknow
- C. Bangalore
- D. New Delhi

Answer: B



Watch Video Solution

51. Sleeping pills are made from:

- A. LSD

B. cocaine

C. Barbiturates

D. Amphetamines

Answer: C



Watch Video Solution

52. Which of the following drugs induce deep sleep in higher dose?

A. Sedatives

B. Narcotics

C. Hallucinogens

D. Stimulant

Answer: A



Watch Video Solution

53. Sedative may produce a feeling of:

- A. calmness
- B. relaxatin
- C. drowsiness
- D. all of these

Answer: D



Watch Video Solution

54. Barbiturates are extensively used as:

- A. antiseptics
- B. sedatives
- C. stimulants
- D. disinfectants

Answer: B



Watch Video Solution

55. Which one is a correct match?

- A. Bhang -Analgesic
- B. cocaine - Opiate narcotics
- C. morphine - Hallucinogen
- D. Barbiturate - Tranquillizer

Answer: D



Watch Video Solution

56. Which of the following is a synthetic drug?

- A. LSD

B. Opium

C. Cocaine

D. Barbiturate

Answer: D



Watch Video Solution

57. Which one of the following is correct statement regarding the particular psychotropic drug specified?

A. Morphine leads to delusions and disturbed emotions

B. Berbiturates cause relaxation and temporary euphoria

C. Hashish causes after thought perceptions and hallucinations

D. Opium stimulator nervous system and causes hallucinations

Answer: B



Watch Video Solution

58. Nembutal is a:

- A. narcotic
- B. stimulant
- C. Barbiturate
- D. hallucinogen

Answer: C



[Watch Video Solution](#)

59. Which one of the following depresses brain activity and produces feelings of calmness, relaxation and drowsiness?

- A. Valium
- B. Hashish
- C. Morphine

D. Amphetamines

Answer: A



Watch Video Solution

60. A young drug addict used to show symptoms of depressed brain activity, feeling of calmness, relaxation and drowsiness. Possibly he was taking:

A. Pethidine

B. valium

C. marijuana

D. Amphetamine

Answer: B



Watch Video Solution

61. Which one of the following is a stimulant?

- A. LSD
- B. Opium
- C. Heroin
- D. cocaine

Answer: D



[Watch Video Solution](#)

62. Cocaine is obtained from:

- A. seeds
- B. bark
- C. roots
- D. leaves

Answer: D



[Watch Video Solution](#)

63. Both (A) and (R) are true and (R) is the correct explanation of (A)

- A. Both (A) and (R) are true and (R) is the correct explanation of (A)
- B. Both (A) and (R) are true but (R) is not the correct explanation of (A)
- C. (A) is true but (R) is false
- D. Both (A) and (R) are false

Answer: C



[View Text Solution](#)

64. Which of the following stimulates the heart?

- A. LSD

B. Hashish

C. Mescaline

D. Epinephine

Answer: D



Watch Video Solution

65. Which one of the following statements is false?

A. Mescaline is a stimulant

B. Psychoactive drug have the ability to alter the activity of the nervous system

C. Adolescence is marked by accelerated physical growth, development of reproductive organs and changes in functioning of the neuroendocrine system

D. hallucinogen can alter a person's thoughts, feelings and perceptions

Answer: A



Watch Video Solution

66. An analgesic is a:

- A. Pain causing drug
- B. fatiguecausing drug
- C. pain reliving drug
- D.

Answer: C



Watch Video Solution

67. Thalidomide, a nonbarbiturate sedative drug given to pregnant women, was withdrawn in 1961 because it resulted in phocomelia or:

- A. limb defect
- B. early abortion
- C. erythroblastosis foetalis
- D. poor development of foetus

Answer: A



[Watch Video Solution](#)

68. Heroin, a synthetic drug is derived from:

- A. ganja
- B. Opium
- C. bhang
- D. charas

Answer: B



Watch Video Solution

69. Opium is obtained from:

- A. Cannabis sativa
- B. Claviceps purpurea
- C. Paraver somniferum
- D. Rauwolfia serpentina

Answer: C



Watch Video Solution

70. Heroin is obtained by:

- A. alkylation of cocaine

- B. acetylation of morphine
- C. hydroxylation of morphine
- D. methylation of benzodiazepines

Answer: b



[Watch Video Solution](#)

71. Narcotics are obtained from:

- A. Digitalis purpurea
- B. papaver somniferum
- C. Solanum tuberosum
- D. Foeniculum vulgare

Answer: B



[Watch Video Solution](#)

72. opium poppy is a plant belonging to the family:

- A. Solanaceae
- B. Apocyanaceae
- C. Papaveraceae
- D. none of these

Answer: C



[Watch Video Solution](#)

73. Which part of poppy plant yields opium?

- A. Dried seeds
- B. dried leaves
- C. Dried roots
- D. Latex from unripe pods

Answer: D



Watch Video Solution

74. The morphine obtained from opium is a/an:

- A. Pome
- B. alkaloid
- C. latex
- D. amphetamines

Answer: B



Watch Video Solution

75. Which of the following drugs act by depressing the central nervous system?

A. caffeine

B. opiates

C. Cocaine

D. amphetamines

Answer: B



Watch Video Solution

76. The "rush" is produced by the intake of:

A. Sedatives

B. opiates

C. stimulants

D. cocaine

Answer: B



Watch Video Solution

77. Heroin is obtained from the plant:

- A. Poppy
- B. Datura
- C. Tobacco
- D. Cannabis sp.

Answer: A



Watch Video Solution

78. Heroin is obtained from the plant of the family:

- A. Liliaceae
- B. Solanaceae
- C. Leguminosae

D. Papaveraceae

Answer: D



Watch Video Solution

79. Which of these is the most dangerous narcotics?

A. Heroin

B. Codeine

C. Opium

D. Morphine

Answer: A



Watch Video Solution

80. Heroin is:

A. diacetyl morphine

B. triacetyl morphine

C. tetraacetyl morphine

D. monoacetyl morphine

Answer: A



[Watch Video Solution](#)

81. Which of the following is not a hallucinogen?

A. LSD

B. Haroin

C. Charas

D. Marijuana

Answer: B



[Watch Video Solution](#)

82. Which of the following is a narcotic drug?

- A. Heroin
- B. Codeine
- C. Morphine
- D. All of these

Answer: D



[Watch Video Solution](#)

83. Which of the following suppresses brain function and relieves intense pain?

- A. Opium
- B. Morphine
- C. Heroin

D. All of these

Answer: D



Watch Video Solution

84. An opium derivative is:

A. brown sugar

B. ganja

C. hashish-charas

D. all of these

Answer: A



Watch Video Solution

85. The term 'brown sugar ' is used for:

- A. acetyl salicylate
- B. 9-tetrahydrocannabinol
- C. lysergic acid diethylamide
- D. diacetylmorphine hydrochloride

Answer: D

 [Watch Video Solution](#)

86. Which of the following is an opiate narcotics?

- A. LSD
- B. Barbiturate
- C. Morphine
- D. Amphetamine

Answer: C

 [Watch Video Solution](#)

87. Amphetamimes are:

- A. narcotics
- B. sedatives
- C. Hallucinogens
- D. Stimulants

Answer: D



[Watch Video Solution](#)

88. Which one of the following is a matching pair of a drug and its category?

- A. Heroin -Psychotropic
- B. Benzodiazepam -Pain killar
- C. Amphetamines -Stimulant

D. Lysergic acid dimethyl amide -Narcotic

Answer: C



[Watch Video Solution](#)

89. The synthetic drugs structurally similar to adrenaline are:

A. analgesics

B. barbiturates

C. Hallucinogens

D. amphetamines

Answer: D



[Watch Video Solution](#)

90. Sleep is prevented by:

A. Valium

B. barbiturates

C. amphetamines

D. benzodiazepines

Answer: C



[Watch Video Solution](#)

91. Caffeine, amphetamine and cocaine are:

A. sedatives

B. stimulants

C. hallucinogens

D. tranquilizers

Answer: B



[Watch Video Solution](#)

92. Cocaine is obtained from the leaves of:

- A. *Thea sinensis*
- B. *Embllica offinalis*
- C. *Erythroxyton coca*
- D. *Theobroma cacao*

Answer: C



Watch Video Solution

93. Cigarette smoke causes:

- A. baldness
- B. lung cancer
- C. colour dirnks

D. none of these

Answer: D



Watch Video Solution

94. Caffeine is a stimulant present in:

A. coffee

B. tea

C. cold drinks

D. all of these

Answer: D



Watch Video Solution

95. Drugs which induce dreamy state of unconsciousness are

- A. sedatives
- B. barbiturate
- C. stimulant
- D. hallucinogen

Answer: D

 [Watch Video Solution](#)

96. Hallucinogens:

- A. are pain killers
- B. nerve stimulants
- C. are never depressants
- D. alter thoughts, feeling and perceptions

Answer: D

 [Watch Video Solution](#)

97. LSD is obtained from:

- A. Cannabis sativa
- B. Erythroxylon coca
- C. Claviceps purpurea
- D. Papaver somniferum

Answer: C



Watch Video Solution

98. Narcotic drugs like charas, bhang and ganja are extracted from:

- A. hemp plant
- B. coca plant
- C. poppy seeds

D. fungus called ergot

Answer: A



Watch Video Solution

99. Ergot, which is an important source of a drug is obtained from:

A. Agaricus

B. Ephedra

C. Claviceps

D. Commiphora

Answer: C



Watch Video Solution

100. LDS is:

- A. Sedatives
- B. tranquillizer
- C. stimulants
- D. hallucinogen

Answer: D

 [Watch Video Solution](#)

101. Addiction of LSD will eventually lead to:

- A. hallucination
- B. damage to lungs
- C. damage to kidneys
- D. mental and emotional disturbances

Answer: A

 [Watch Video Solution](#)

102. LSD is derived from ergot, an extract got from fruiting body of fungus *Claviceps purpurea*, however, bhang, ganja and charas are obtained from the dried of *Cannabis sativa*.

A. stems

B. leaves

C. flowers

D. leaves and flower

Answer: D



[Watch Video Solution](#)

103. LSD (Lysergic acid diethylanide) is prepared from:

A. ergot fungus

B. bark of Cinchona

C. leaves of Atropa

D. root of Rauwolfia

Answer: A



[Watch Video Solution](#)

104. Which of the following are hallucinogens?

A. Ganja

B. Charas

C. Bhang

D. All of these

Answer: D



[Watch Video Solution](#)

105. Ingestion of marijuana leads to illusions and alters the thoughts, feeling and perception of a person. Marijuana is a:

- A. narcotic
- B. sedatives
- C. hallucinogen
- D. stimulant

Answer: C



[Watch Video Solution](#)

106. Given below are assertion and reason. Point out if both are true with reason being correct explanation (A), Both are true but reason is not correct explanation (B), assertion is true but reason is wrong (C), and both are wrong (D).

Assertion. LSD and marijuana are clinically used as analgesics

Reason. Both these drugs suppress brain function

- A. Both (A) and (R) are true and (R) is the correct explanation of (A)
- B. Both (A) and (R) are true but (R) is not the correct explanation of (A)
- C. (A) is true but (R) is false
- D. Both(A) and (R) are false

Answer: D

 **Watch Video Solution**

107. Match the following:

Set I		Set II	
A	LSD	1	Euphorian effect
B	Disulfiram	2	Parasympathetic
C	Cocaine	3	<i>Cannabis</i>
D	Scopolamine	4	Ergot alkaloid
E	Hashish	5	Antabuse

A. A = 4, B = 5, C = 1, D = 2, E = 3

B. A = 4, B = 1, C = 5, D = 2, E = 3

C. A = 4, B = 5, C = 2, D = 1, E = 3

D. A = 5, B = 4, C = 1, D = 2, E = 3

Answer: A



Watch Video Solution

108. Match list I (drug) with list II (action) and select the correct answer using the codes gives below the lists:

List I		List II	
A	LSD	1	Sedative
B	Barbiturate	2	Depressant
C	Alcohol	3	Stimulant
D	Tobacco	4	Hallucinogen

A. A = 2, B = 4, C = 1, D = 3,

B. A = 4, B = 1, C = 2, D = 3,

C. A = 1, B = 2, C = 4, D = 3,

D. A = 3, B = 4, C = 2, D = 1

Answer: B



Watch Video Solution

109. Match list I (drug) with list II (action) and select the correct answer using the codes gives below the lists:

List I		List II	
A	LSD	1	<i>Papaver</i>
B	Opium	2	<i>Claviceps</i>
C	Cocaine	3	<i>Cannabis</i>
D	Hashish	4	<i>Erythroxyton</i>

A. A = 2, B = 4, C = 1, D = 3,

B. A = 3, B = 2, C = 1, D = 4,

C. A = 2, B = 1, C = 4, D = 3,

D. A = 4, B = 3, C = 2, D = 1

Answer: C



Watch Video Solution

110. Antihæmorrhagic ergot alkaloids are got from

- A. algae
- B. fungi
- C. Cinchona
- D. bryophytes

Answer: B



[Watch Video Solution](#)

111. Hashish, marijuana and LSD are:

- A. toxins
- B. hallucinogens
- C. stimulants
- D. none of these

Answer: B



[Watch Video Solution](#)

112. Hashish and charas are obtained from:

- A. Cannabis sativa
- B. Rauwolfia serpentina
- C. Papaver somniferum
- D. Claviceps purpurea

Answer: A



[Watch Video Solution](#)

113. A drug called reserpine was discovered by:

- A. Hansen
- B. Jal Vakil
- C. Paul Ehrlich

D. Alexander Wood

Answer: B



Watch Video Solution

114. Reserpine alkaloid is a drug extracted from the roots of

- A. *Ferula foetida*
- B. *Atropa belladonna*
- C. *Digitalis purpurea*
- D. *Rauwolfia serpentina*

Answer: D



Watch Video Solution

115. Reserpine is a:

- A. analgesic
- B. antibiotoc
- C. antipyretic
- D. antihypertensive

Answer: D

 [Watch Video Solution](#)

116. Rauwolfia serpentina belongs to the family:

- A. Rubiaceae
- B. Malvaceae
- C. Apocynaceae
- D. Solanacese

Answer: C

 [Watch Video Solution](#)

117. Which of the following is not a source of drug?

- A. *Dalbergia sissoo*
- B. *Claviceps purpurea*
- C. *Cannabis sativa*
- D. *Papaver somniferum*

Answer: A



Watch Video Solution

118. From which part of *Atropa belladonna* is the drug 'belladonna' obtained?

- A. stems
- B. Leaves
- C. flowers

D. leaves and flower

Answer: D



[Watch Video Solution](#)

119. The drug 'belladonna' is obtained from:

A. Atropa

B. Capsicum

C. Solanum

D. Rauwolfia

Answer: A



[Watch Video Solution](#)

120. Atropa belladonna yields the medicine used for:

- A. gastric ulcers
- B. checking the eyes
- C. leprosy
- D. constipation

Answer: B

 [Watch Video Solution](#)

121. Stramonium is a drug obtained from the plant species of

- A. Ocimum
- B. Datura
- C. Rauwolfia
- D. Asphodelus

Answer: B

 [Watch Video Solution](#)

122. Profound confusion, memory loss and changes in personality are some of the symptoms of:

- A. progeria
- B. Schizophrenia
- C. Parkinson's disease
- D. Alzheimer's disease

Answer: B



[Watch Video Solution](#)

123. Which one of the following pairs is not correctly matched?

- A. Streptomyces -Antibiotic
- B. Rhizobium -Biofertilizer
- C. Serratia -Drug addiction

D. Spirulina -Single cell protein

Answer: C



Watch Video Solution

124. A person showing unpredictable moods, out-bursts of emotions, quarrelsome behavior and conflicts with others is suffering from

- A. Schizophrenia
- B. Mood disorders
- C. Addictive disorders
- D. Borderline Personality Disorder (BPD)

Answer: D



Watch Video Solution

125. Central Council for Research in Yoga and Naturopathy (CCRYN) is an organization that funds reseach in the given field in our country. It is located in:

- A. New Delhi
- B. Rishikash
- C. Bangalore
- D. Hyderabad

Answer: A



Watch Video Solution

126. In which of the following disorder, person will become hypersensitive about ones look?

- A. mood
- B. Phobia

C. Anxiety

D. Hypochondria

Answer: D



Watch Video Solution

127. Which of the following is used in eye inflammation and for curing night blindness?

A. Eclipta alba

B. Atropa belladonna

C. Cichorium intybus

D. Emilia sonchifolia

Answer: D



Watch Video Solution

128. Psychological disorder which is characterised by sadness, hopelessness, low self esteem, decline in interest, energy, Concentration and changes in sleep pattern and appetite is called

- A. Mood disorder
- B. anxiety disorder
- C. attention deficit disorder
- D. obsessive-compulsive disorder

Answer: A



Watch Video Solution

129. International Day against Drug Abuse and Trafficking is:

- A. 43642
- B. 43697
- C. 43739

D. 43495

Answer: A



Watch Video Solution

130. Which of the following damages gastric mucosa if taken along with alcohol?

A. Aspirin

B. Hashish

C. Valium

D. Barbiturate

Answer: A



Watch Video Solution

131. Simultaneous use of alcohol and valium:

- A. Causes drowsiness
- B. Decreases coordination
- C. increases sedative effect
- D. damages gastric mucosa

Answer: C



Watch Video Solution

132. Heroin is extracted from

- A. *Erythroxylon coca*
- B. *Cannabis sativa*
- C. *Papaver somniferum*
- D. *Atropa belladonna*

Answer: C



Watch Video Solution

133. Opiate narcotic drugs are

- A. hypnotic
- B. anaigestic
- C. anti-amxiety
- D. anti-histamina

Answer: B



Watch Video Solution

134. Drug that increases cardiovascular effects is

- A. insulin

B. cocaine

C. barbiturate

D. benzodiazepine

Answer: B



Watch Video Solution

135. An alkaloid called 'reserpine' is extracted from:

A. Roots of serpentina

B. Leaves of Sarpaganda

C. Roots of Ashwaganda

D. Leaves of Ashwaganda

Answer: A



Watch Video Solution

136. Nuerasthenia refers to:

- A. mental inability to concentrate on or enjoy things
- B. traumatic experience like rape
- C. disorder of sensory perception
- D. undue concern about health

Answer: A



Watch Video Solution

137. Which of the following is correct for LSD, morphine and charas respectively?

- A. Claviceps, papaver, somniferum, Cannabis
- B. Claviceps, Cannabis, Papaver, somniferum
- C. Claviceps, Cannabis, Rauwolfia
- D. Claviceps, Fusarium, Cannabis

Answer: A



[Watch Video Solution](#)

138. Assertion (A) : Fatty liver syndrome occurs by alcoholism. Reason (R) : Alcoholics have a rate of carcinoma 10 times higher than that expected in the general population.

- A. Both (A) and (R) are true and (R) is the correct explanation of (A)
- B. Both (A) and (R) are true but (R) is not the correct explanation of (A)
- C. (A) is true but (R) is false
- D. Both(A) and (R) are false

Answer: B



[Watch Video Solution](#)

139. Match the following and choose the correct answer:

Column I		Column II	
A	Phobia	1	Maladaptive habit
B	Neurosis	2	Undue concern about health
C	Hypochondria	3	Lack of sleep
D	Insomnia	4	Intense fear

A. A = 2, B = 1, C = 4, D = 3,

B. A = 4, B = 1, C = 2, D = 3,

C. A = 2, B = 1, C = 3, D = 4,

D.

Answer: B



Watch Video Solution

140. Select the correct statement from the ones given below

A. Barbiturates when given to criminals make them tell the truth

- B. Morphine is often given to persons who have undergone surgery as a pain killer
- C. Chewing tobacco lowers blood pressure and heart rate
- D. Cocaine is given to patients after surgery as it stimulates recovery

Answer: B

 [Watch Video Solution](#)

141. Every time when the dosage of drug has to be increased to achieve the same kick, that initially occurred in response to a smaller dose, the condition is known as

- A. tolerance
- B. addiction
- C. rebound effect
- D. withdrawal symptoms

Answer: A



Watch Video Solution

142. Which of the following is an opioid drug ?

- A. Haroin
- B. Cocaine
- C. marijuana
- D. Hashish

Answer: A



Watch Video Solution

143. Nicotine and cocaine are

- A. resins

B. tannins

C. alkaloids

D. peptides

Answer: C



Watch Video Solution

144. Excessive consumption of alcohol is

A. alcoholism

B. intoxication

C. hallucination

D. drug addiction

Answer: A



Watch Video Solution

145. Alcoholism may lead to:

- A. Skin cancer
- B. Viral disease
- C. Eye infections
- D. Liver cirrhosis

Answer: D



Watch Video Solution

146. Cirrhosis of liver

- A. Cancer of liver
- B. Swelling of liver
- C. Shrinking and fibrosis of liver
- D. Accumulation of bile in the liver due to obstruction

Answer: C



[Watch Video Solution](#)

147. Alcohol affects mental and motor functions because

- A. It causes degeneration of contractile fibres of muscles
- B. It crosses blood brain barrier
- C. It is quickly absorbed in gut
- D. it raises blood pressure

Answer: B



[Watch Video Solution](#)

148. Marijuana is extracted from



[Watch Video Solution](#)

149. Which one is obtained by acetylation of morphine

- A. Ganja
- B. Smack
- C. Charas
- D. Hashish

Answer: B



[Watch Video Solution](#)

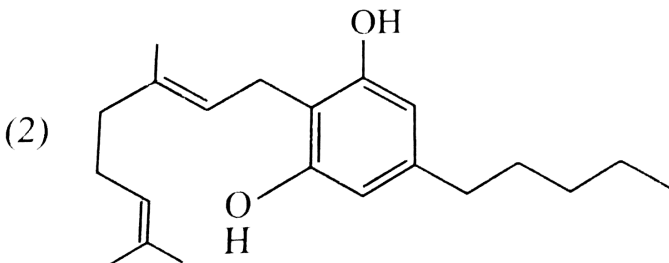
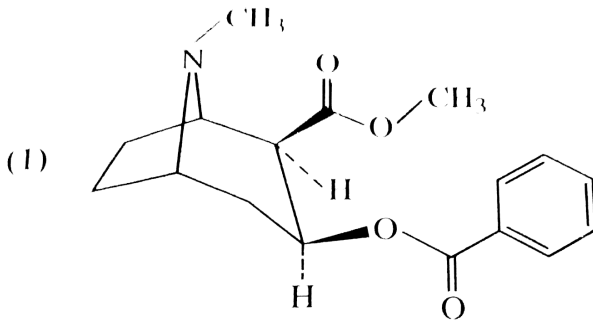
150. Cocaine interferes with which neurotransmitter transportation?

- A. Dopamine
- B. Serotonin
- C. Norepinephrine
- D. All of these

Answer: A

 Watch Video Solution

151. Identify the molecules (1) and (2) shown below and select the right option giving their source and use.



A.

Molecule	Source	Use
(1) Cocaine	Erythroxylum coca	Accelerates the transtort of dopam

B.

Molecule	Source	Use
(1)Heroin	Cannabis sativa	Depressant and slows down body functions

C.

Molecule	Source	Use
(1)Cannabinoid	Atropa belladonna	Produces hallucinations

D.

Molecule	Source	Use
(1)Morphine	Papaver somniferum	Sedative and pain killer

Answer: D



[View Text Solution](#)

152. Sports persons frequently abuse drug

A. heroin

B. cocaine

C. morphine

D. amphetamine

Answer: D



[Watch Video Solution](#)

153. Consumption of alcohol leads to

- A. lowering of blood glucose level of the body
- B. accumulation of acetaldehyde in liver
- C. synthesis of fat in liver
- D. all of the above

Answer: D



Watch Video Solution

154. Addiction of LSD will eventually lead to:

- A. hallucination
- B. damage to lungs
- C. damage to kidneys

D. mental and emotional disturbances

Answer: D



[Watch Video Solution](#)

155. Which one of the following drugs depresses (switch off) the activities of central nervous system, is known as sedative and also gives feeling of calmness, relaxation or drowsiness?

A. Opium

B. Heroin

C. Cocaine

D. Barbiturate

Answer: D



[Watch Video Solution](#)

156. Which is particular type of drug that is obtained from the plant



A. Stimulant

B. Pain-killar

C. Depressant

D. Hallucinogen

Answer: D



Watch Video Solution

157. Which is/are wrongly matched

1. Alkaloid - codein
2. Lectin-Morphine
3. Toxin -Abrin
4. Terpene - Curcumin

- A. I and II only
- B. II and III only
- C. III and IV only
- D. II and IV only

Answer: D



Watch Video Solution

158. Heroine is :

- A. a cannabinoid
- B. commonly called 'coke' or 'crack'
- C. 3, 6-diacetylmorphine (chemically)
- D. used to treat mental illnesses like depression and insomnia

Answer: C

 [Watch Video Solution](#)

159. In alcoholics, liver gets damaged as it:

- A. accumulation of excess glycogen
- B. accumulation of excess fat
- C. excess detoxification
- D. excess demination

Answer: B

 [Watch Video Solution](#)

160. Smack and Crack are produced from

- A. Cannabis sativa and Atropa belladonna
- B. Erythroxyton coca and Atropa belladonna
- C. Cannabis sativa and Papaver somniferum
- D. Papaver somniferum and Erythroxyton coca

Answer: D



Watch Video Solution

161. Which of the following options are correct

1. Heroin-Stimulant
2. Marijuana-Cardiovascular
3. Cocaine-Hallucination
4. Morphine-Sedative

A. 2,3 and 4

B. 1,2 and 4

C. 1, 2 and 3

D. 1, 3 and 4

Answer: A



[Watch Video Solution](#)

162. It is a stimulant:

A. Opium

B. valium

C. Novacaine

D. Mescaline

Answer: C



[Watch Video Solution](#)

Tobacco Smoking

1. Tobacco is used for:

- A. snuffing
- B. chewing
- C. smoking
- D. all of these

Answer: D



[Watch Video Solution](#)

Alcoholism

1. Which organ in the body is most affected by excessive intake of alcohol?

A. Liver

B. Brain

C. Lungs

D. Stomach

Answer: A



[Watch Video Solution](#)

Drugs

1. Any chemical substance that alters: the function of one or more body organs is called:

A. drug

B. toxin

C. antigen

D. allergen

Answer: A



[Watch Video Solution](#)

Exemplar Problems

1. The term 'Health' is defined in many ways. The most accurate definition of the health would be

- A. health is the reflection of a smiling face.
- B. health is the symbol of economic prosperity.
- C. health is the state of body and mind in a balanced condition.
- D. health is a state of complete physical, mental and social well-being.

Answer: d



[Watch Video Solution](#)

2. The organisms which cause diseases in plants and animals are called

A. Vectors

B. Insects

C. Worms

D. Pathogens

Answer: d



Watch Video Solution

3. The chemical test that is used for diagnosis of typhoid is

A. ESR -Test

B. PCR - Test

C. Widal - Test

D. ELISA - Test

Answer: c



Watch Video Solution

4. Diseases are broadly grouped into infectious and non-infectious diseases. In the list given below, identify the infectious diseases.

(i) Cancer , (ii) Influenza

(iii) Allergy, (iv) Small pox

A. i and ii

B. ii and iv

C. ii and iii

D. iii and iv

Answer: b



Watch Video Solution

5. The sporozoites that cause infection, when a female Anopheles mosquito bites a person, are formed in

- A. Liver of human
- B. RBCs of mosquito
- C. Intestine of human
- D. Salivary glands of mosquito

Answer: d



[Watch Video Solution](#)

6. The disease chikungunya is transmitted by

- A. House flies
- B. Aedes mosquitoes
- C. Cockroach
- D. Female Anopheles

Answer: b



Watch Video Solution

7. Many diseases can be diagnosed by observing the symptoms in the patient. Which group of symptoms are indicative of pneumonia ?

- A. Difficulty in respiration, fever, chills, cough, headache
- B. Constipation, abdominal pain, cramps, blood clots
- C. Nasal congestion and discharge, cough, sorethroat, heanache
- D.

Answer: a



Watch Video Solution

8. The genes causing cancer are

A. oncogenes

B. regulatory genes

C. structural genes

D. expressor genes

Answer: a



Watch Video Solution

9. In malignant tumors, the cells proliferate, grow rapidly and move to other parts of the body to form new tumors. This stage of disease is called.

A. mitosis

B. metastasis

C. metagenesis

D. teratogenesis

Answer: b



Watch Video Solution

10. When an apparently healthy person is diagnosed as unhealthy by a psychiatrist, the reason could be that

- A. he dose not take interest in sports.
- B. the patient was not efficient at his work .
- C. the patient was not economically prosperous.
- D. the patient shows behavioural and social maladjustment.

Answer: d



Watch Video Solution

11. Which of the following are the reason (s) for Rheumatoid arthritis ?

Choose the correct option.

- (i) The ability to differentiate pathogens or foreign molecules from self cells increases.
- (ii) Body attacks self cells.
- (iii) More antibodies are produced in the body.
- (iv) The ability to differentiate pathogens or foreign molecules from self cells is lost.

- A. i and ii
- B. i and iii
- C. ii and iv
- D. iii and iv

Answer: c



Watch Video Solution

12. AIDS is caused by HIV. Among the following, which one is not a mode of transmission of HIV ?

- A. Sharing the infected needles
- B. Transfusion of contaminated blood
- C. Shaking hands with infected persons.
- D. Sexual contact with infected persons

Answer: c

 [Watch Video Solution](#)

13. Smack' is a drug obtained from the

- A. latex of papavr somniferum
- B. leaves of Cannabis sativa
- C. fruits of Erythroxyll coca
- D. flowers of Dature

Answer: a

 [Watch Video Solution](#)

14. The substance produced by a cell in viral infection that can protect other cells from further infection is

- A. serotonin
- B. colostrum
- C. interferon
- D. histamine

Answer: c



Watch Video Solution

15. Transplantation of tissues/organs to save certain patients often fails due to rejection of such tissues/organs by the patient. Which type of immune response is responsible for such rejections?

- A. auto-immune response

- B. humoral immune response
- C. Physiological immune response
- D. cell-mediated immune response

Answer: d



[Watch Video Solution](#)

16. Antibodies present in colostrum which protect the new born from certain diseases is of

- A. Ig G type
- B. Ig A type
- C. Ig D type
- D. Ig E type

Answer: b



[Watch Video Solution](#)

17. Tobacco consumption is known to stimulate secretion of adrenaline and nor-adrenaline. The component causing this could be

- A. Nicotine
- B. Curamin
- C. Catechin
- D. Tannic acid

Answer: a



Watch Video Solution

18. Antivenom against snake poison contains

- A. Antigens
- B. Enzymes
- C. Antibodies

D. Antigen-antibody complexes

Answer: c



Watch Video Solution

19. Which of the following is not a lymphoid tissue ?

A. Spleen

B. Tonsils

C. Thymus

D. Appendix

Answer: d



Watch Video Solution

20. Which of the following glands is large sized at birth but reduces in size with ageing ?

- A. Pineal
- B. Thymus
- C. Pituitary
- D. Thyroid

Answer: b



[Watch Video Solution](#)

21. Heamozoin is a:

- A. Precursor of heamoglobin
- B. toxin from streptococcus
- C. toxin from Plasmodium species
- D. toxin from Heamopilus species

Answer: c



Watch Video Solution

22. One of the following is not the causal organism for ringworm.

- A. Microsporidion
- B. Trichophyton
- C. Epidermophyton
- D. Macrosporium

Answer: d



Watch Video Solution

23. A person with sickle cell anaemia is

- A. less prone to malaria

B. less prone to typhoid

C. more prone to malaria

D. more prone to typhoid

Answer: a



Watch Video Solution

Questions Based On Ncert Text

1. Consider the following statements.

A. Health increases productivity and brings economic prosperity

B. Among non-infectious diseases, AIDS is the major cause of death.

C. Malarial fever can be confirmed by Widal test.

D. Balanced diet, personal hygiene and regular exercise are very important to maintain good health.

A. B and C are correct

B. B and D are correct

C. A and B are correct

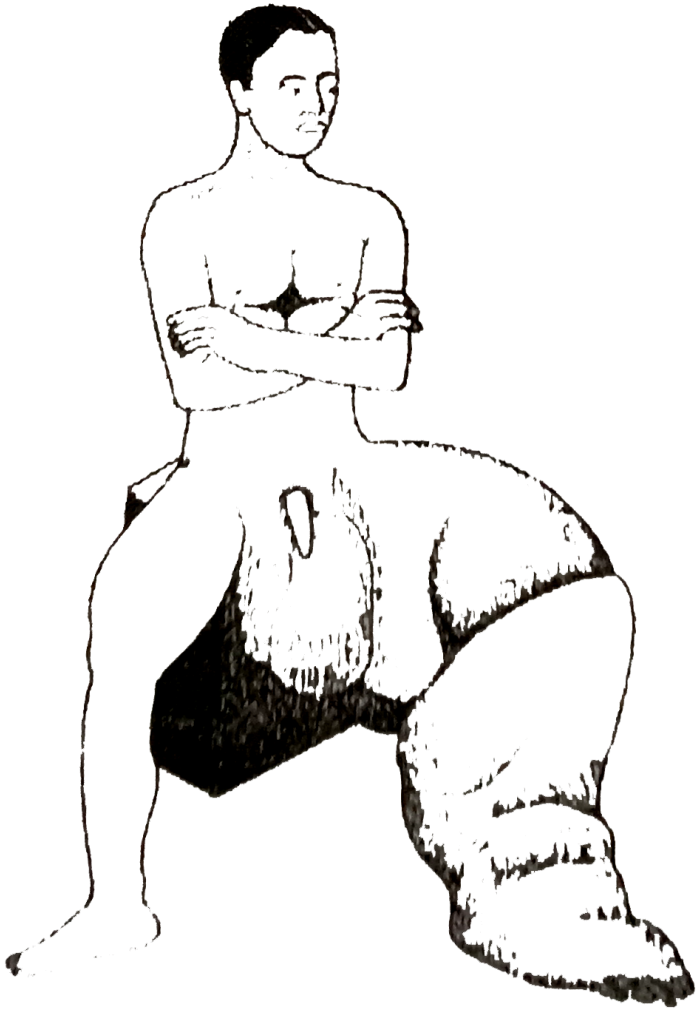
D. A and D are correct

Answer: d



Watch Video Solution

2. Diagram showing inflammation in one of the lower limbs is given below: Identify the causative agent of this disease:



A. *Giardia lamblia*

B. *Fasciola hepatica*

C. *Wuchereria bancrofti*

D. *Dracunculus medinensis*

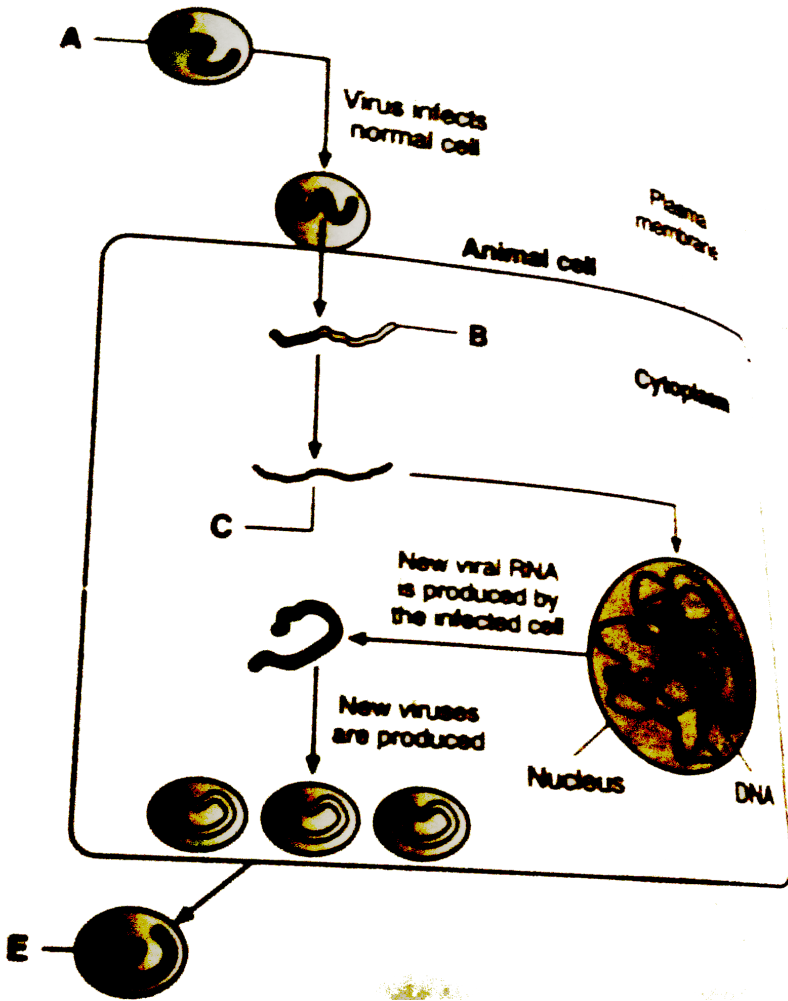
Answer: c



Watch Video Solution

3. Schematic diagram of the replication of retrovirus is given below.

Identify the labelling A - E and select the correct option:



A- Retrovirus, B- Viral RNA, C- Viral DNA, D- Plasma membrane, E- New

Virus

A- New Virus, B- Viral RNA, C- Viral DNA, D- Plasma membrane, E-

Retrovirus

C. A-Retrovirus, B-Viral DNA, C-Viral DNA, D-Plasma membrane, E-New
Virus

D. A-Viral RNA, B-Retrovirus, C-Virus DNA, D-Plasma membrane, E-New
Virus

Answer: a

 [View Text Solution](#)

4. Read the following five statements (A to E) about cancer and select the option with all correct statements:

(A) Cancer cells do show a property called contact inhibition.

(B) Cancer is one of the most dreaded diseases of human beings.

(C) Cancer causing viruses called oncogenic viruses have genes called viral oncogenes.

(D) Ionising radiations like X-rays and gamma rays and non-ionizing radiations like UV cause DNA repair and prevent cancer.

(E) Cancer detection is based on biopsy and histopathological studies of the tissue.

A. (A), (D) and (E)

B. (B), (C) and (E)

C. (A), (C) and (D)

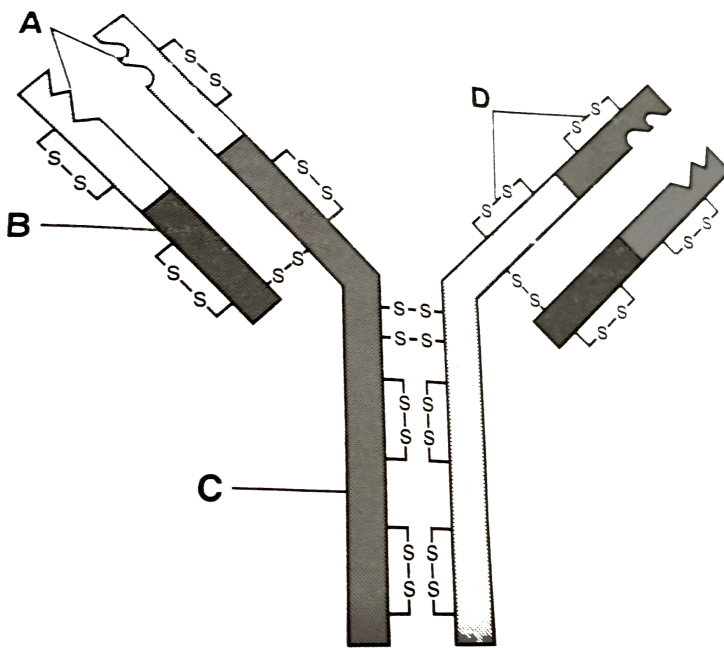
D. (A), (B) and (D)

Answer: b



Watch Video Solution

5. Diagrammatic view of an antibody molecule is given below. Identify A, B, C and D by selecting the correct option:



A. A - Antigen binding site, B - Light chain, C - Heavy chain, D - disulphide bonds

B. A - Antigen binding site, B - Heavy chain, C - Light chain, D - Disulphide bonds

C. A - Disulphide bonds, B - Light chine, C - Heavy chain, D - Antigen binding site

D. A - Light chain, B - Antigen binding site, C - Heavy chain, D - Disulphide bonds

Answer: a



Watch Video Solution

6. Which one of the following statements about AIDS is incorrect?

- A. AIDS is caused by the Human Immuno deficiency Virus (HIV), a member of a group of viruses called retrovirus
- B. AIDS is not spread by mere touch or physical contact, it spreads only through body fluids.
- C. A widely used diagnostic test for AIDS is Wayson stain test
- D. AIDS has no cure, prevention is the best option.

Answer: c



View Text Solution

7. Select the correct option:

- (A) Physical barrier (i) saline in mouth
(B) Physiological (ii) Neutrophils and monocytes
(C) Cellular barriers (iii) Interferons
(D) Cytokine barriers (iv) skin

- A. (A) (B) (C) (D)
(ii) (i) (iv) (iii)
- B. (A) (B) (C) (D)
(iv) (i) (ii) (iii)
- C. (A) (B) (C) (D)
(iv) (iii) (i) (ii)
- D. (A) (B) (C) (D)
(iv) (iii) (i) (ii)

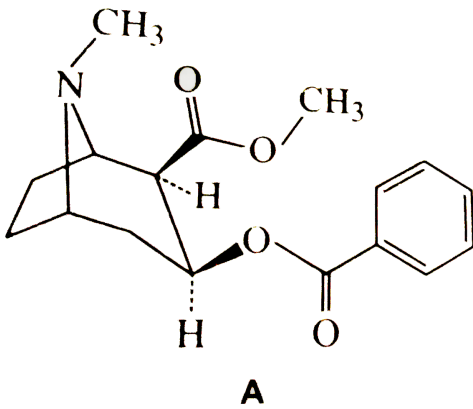
Answer: b



[View Text Solution](#)

8. The chemical structure of drug and image of its source are given below .

Identify them by selecting the correct option:



- A. A - Morphine, B - Papaver somniferum
- B. A - Cocaine, B - Erythroxyllum coca
- C. A - Heroione, B - Cannabis sativa
- D. A - Cannbinoid, B - Atropa belladonna

Answer: a

[Watch Video Solution](#)

9. Consider the following statements with respect to allergy.

A. Allergy is due to the release of chemicals like heparin and adrenaline from the mast cells.

B. The exaggerated response of the immune system to certain antigens present in the environment is called allergy.

C. The use of chemicals like anti-histamine, adrenaline and steroids aggravate the symptoms of allergy.

D. Common examples of allergens are mites in dust, pollens, animals dander, etc.

A. A and C are correct

B. A and d are correct

C. A and B are correct

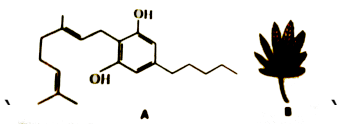
D. B and D are correct

Answer: d



Watch Video Solution

10. The skeletal structure of a molecule of a drug and image of its source are given below. Identify them by selecting the correct option:



- A. A - Morphine, B - Leaves of Thea sinensis
- B. A - Heroine molecule, B - Lesves of Papaver sonmiferum
- C. A - Cannabinoid molecule, B - Leaves of Cannabis sativa
- D. A - Cocaine molecule, B - Leaves of Atropa belladonna

Answer: c

[Watch Video Solution](#)

11. Which one of the following statements is wrong?

- A. Entamoeba histolytica, a protozoan parasite in the large intestine of humen, causes, amoebiasis.
- B. The B -lyympocytes produce proteins called antibodies.

C. Innate immunity is non-specific type of defence, that is present at the time of birth.

D. Malignant malaria caused by Plasmodium vivax.

Answer: d



View Text Solution