



## **BIOLOGY**

# **BOOKS - GR BATHLA & SONS BIOLOGY (HINGLISH)**

## **REPRODUCTIVE HEALTH**

### **Multiple Choice Questions**

1. Select the statement which is not correct about reproductive health ?

A. It refers to the healthy reproductive organs with normal functions

B. It is an insignificant part of general health and a central feature of human development

C. It is a state of complete physical , mental and social well-being

D. It deals with the reproductive processes, functions and system at all stages of life

**Answer: B**

---



[Watch Video Solution](#)

2. Prenatal defects in the foetus can be detected by

A. MRI

B. Laparoscopy

C. Genetic engineering

D. Amniocentesis

**Answer: D**



[Watch Video Solution](#)

3. In India,"Family-planning Programme" was started in :

A. 1947

B. 1950

C. 1952

D. 1955

**Answer: C**



**Watch Video Solution**

4. Contraceptive oral pills used by females help in birth control by :

A. Killing of ova

B. Killing of sperms

C. preventing ovulation

D. forming barrier between sperms and ova

**Answer: C**



**Watch Video Solution**

5. Most important component of oral contraceptive is :

A. LH

B. GH

C. Thyroxine

D. Progesterone

**Answer: D**



**Watch Video Solution**

6. Progesterone present in contraceptive pill is meant for preventing :

A. ovulation

B. cleavage

C. fertilization

D. implantation of zygote

**Answer: A**



**Watch Video Solution**

7. Depo-Provera refers to :

A. implant

B. oral contraceptive

C. intrauterine device

D. injectable contraceptive

**Answer: D**



**Watch Video Solution**

8. A method of birth control is :



A. HTF

B. GIFT

C. IUDs

D. IVF-ET

**Answer: C**



**Watch Video Solution**

**9. Which of the following methods of birth control can cause excessive menstrual bleeding and pain ?**

A. Condom

B. Cervical cap

C. Oral contraceptive

D. Intrauterine device

**Answer: D**



**Watch Video Solution**

**10. Most effective contraceptive method for ladies is :**

A. ECP

B. MTP

C. Cu-T

D. Rhythm method

**Answer: C**



**Watch Video Solution**

**11. Copper-T/loop prevents:**

A. cleavage

B. fertilization

C. ovulation

D. zygote formation

**Answer: B**



**Watch Video Solution**

**12. Copper-T:**

A. acts as a barrier

B. prevents cleavage

C. suppresses fertilization

D. prevents implantation of blastocysts

**Answer: C**



**Watch Video Solution**

**13.** Cu ions released from copper-released Intra Uterine Devices (IUDs):

A. make uterus unsuitable for implantation

B. increase phagocytosis of sperms

C. suppress sperm motility

D. prevent ovulation

**Answer: C**



**Watch Video Solution**

**14. Which one is safest method of birth control**

**?**

A. The rhythm method

B. Sterilization techniques

C. Use of physical barriers

D. Termination of unwanted pregnancy

**Answer: B**



**Watch Video Solution**

**15.** Tubectomy a method of population control  
is performed on

A. males only

B. females only

C. both males and females

D. only pregnant females

**Answer: B**



**Watch Video Solution**

**16.** Purpose of tubectomy is to prevent

A. fertilization

B. coitus

C. egg formation



D. embryonic development

**Answer: A**



**Watch Video Solution**

**17. which is related to males ?**

A. Oral pill

B. Tubectomy

C. Vesectomy

D. None of these

**Answer: C**



**Watch Video Solution**

**18.** Cutting or putting ligatures around male duct is called:

- A. tubectomy
- B. vasectomy
- C. salpingectomy
- D. None of these

**Answer: B**



**Watch Video Solution**

**19. Preventive birth control measure is :**

A. MTP

B. Test tube babies

C. Preventing union of sperm and ovum

D. Preventing sperms from entering uterus

**Answer: C**



[Watch Video Solution](#)

20. Fertilization of ovum can be prevented by:

A. tubal ligation

B. vasectomy

C. use of IUDs

D. all of these

**Answer: D**



[Watch Video Solution](#)

**21.** In IVF technique , fusion of ovum and sperm occurs in:

A. uterus

B. vagina

C. fallopian tube

D. culture medium

**Answer: D**



**Watch Video Solution**

22. This is the method of birth control :

A. HIF

B. GIFT

C. IUDs

D. IVF-ET

**Answer: C**



**Watch Video Solution**

23. Given below are four methods (A-D) and their modes of action (a-d) in achieving contraception. Select their correct matching for the four options that follow

Method		Mode of Action
A The pill	(a)	Prevents sperms
B Condom	(b)	Prevents implantation
C Vasectomy	(c)	Prevents ovulation
D Copper T	(d)	Saman contains no sperma

A. A=3,B=1,C=4,D=2

B. A=2,B=3,C=1,D=3

C. A=4,B=1,C=2,D=3

D. A=3,B=4,C=1,D=2

**Answer: A**



**Watch Video Solution**

**24.** Which of the following methods of birth control is effective , easy to use and inexpensive ?

A. IUD

B. Condom

C. Implant

D. Diaphragm



**Answer: B**



**Watch Video Solution**

**25. Condom "Nirodh" is manufacture by:**

A. Hindutan Lever Ltd

B. Hindutan Letex Ltd

C. Both (a) and (b)

D. None of the above

**Answer: B**

 [Watch Video Solution](#)

**26.** Which of the following is mechanical barrier used in birth control ?

A. Loop

B. Copper-T

C. Diaphragm

D. Dalcon shield

**Answer: C**

 [Watch Video Solution](#)

27. Which one is not included in barrier methods of birth control ?

- A. Diaphragms
- B. Lippers loop
- C. Cervical caps
- D. Vaults

**Answer: B**



**Watch Video Solution**

**28.** Consider the statements given below regarding contraception and answer as directed thereafter:

(1) Medical Termination of Pregnancy (MTP) during first trimester is generally safe

(2) Generally chances of contraception are nil until mother breast-feeds the infant upto two years

(3) Intrauterine devices like copper-T are effective contraceptives

(4) Contraceptive pill may be taken upto one week after coitus to prevent conception

A. 1 and 2

B. 2 and 3

C. 3 and 4

D. 1 and 3

**Answer: D**



**Watch Video Solution**

**29.** In vitro fertilization is a technique that involves transfer of which one of the following into the fallopian tube?

- A. Either zygote or early embryo upto 8 cell stage
- B. Embryo only, upto 8 cell stage
- C. Embryo of 32 cell stage
- D. Zygote only

**Answer: A**



**Watch Video Solution**

**30. Medical Termination of Pregnancy (MTP) is**  
considered safe up to how many weeks of

pregnancy ?

- A. Six weeks
- B. Eight weeks
- C. Twelve weeks
- D. Eighteen weeks

**Answer: C**



**Watch Video Solution**

**31.** Which one of the following is the mostly widely accepted method of contraceptive in India, as at present ?

A. Tubectomy

B. Diaphragms

C. Cervical caps

D. IUDs (Intra uterine devices)

**Answer: D**



**Watch Video Solution**



**32. Saheli' is :**

- A. a diaphragm for females
- B. a diaphragm used by males
- C. an oral contraceptive for females
- D. a surgical method of sterilization method  
for males

**Answer: C**



**Watch Video Solution**

**33.** Saheli'-a new oral contraceptive for females was developed by the scientists at which institute ?

A. I.I. Sc-Banglore

B. C.S.I.R-New Delhi

C. C.D.R.I-Lucknow

D. I.C.M.R-New Delhi

**Answer: C**



**Watch Video Solution**

**34.** Saheli, a new oral contraceptive for the females developed by Indian scientist is a:

- A. steroidal preparation
- B. hormonal preparation
- C. non-steroidal preparation
- D. toxic preparation to kill sperms

**Answer: C**



**Watch Video Solution**

**35.** The technique called Gamete intra Fallopian Transfer (GIFT) is recommended for those females

A. who cannot produce an ovum

B. who cannot retain the foetus inside uterus

C. who cannot provide suitable environment for fertilization

D. whose cervical cannal is too narrow to allow passage for the sperms

**Answer: A**



**Watch Video Solution**

**36.** The non-medicated IUD is :

A. LNG-20

B. Copper-T

C. Lippes loop

D. Progestasert

**Answer: C**



37. Which one of the following cannot be consider as Assisted Reproductive Technology (ART) ?

A. In vitro fertilization (IVF)

B. Medical termination of pregnancy (MTP)

C. Gamete intrafallopain transfer (GIFT)

D. Intra cytoplasmic sperm injection (ICSI)

**Answer: B**



Watch Video Solution

**38.** In Assisted Reproductive Technology , the method in which a sperm is directly injected into the ovum is called :

A. GIFT

B. ET

C. ZIFT

D. ICSI

**Answer: D**



[Watch Video Solution](#)

**39.** Oral contraceptive pill is composed of :

- A. estrogen and testosterone
- B. estrogen and progesterone
- C. estrogen and growth hormone
- D. progesterone

**Answer: B**



[Watch Video Solution](#)



40. The test-tube baby programme employs which one of the following techniques ?

A. Intra uterine insemination (IUI)

B. Gamete intra Fallopian transfer (GIFT)

C. Zygote intra Fallopain transfer (ZIFT)

D. Intra cytoplasmic sperm injection (ICSI)

**Answer: C**



**Watch Video Solution**

41. Match the contraceptive method given under column I with their examples given under column II . Select the correct choice from those given below. :

Method	Mode of action
A The pill	1 Prevents sperm reaching cervix
B Condom	2 Prevents implantation
C Vasectomy	3 Prevents ovulation
D Copper-T	4 Semen contains no sperm

A. A=p,B=r,C=q,D=t

B. A=s,B=q,C=t,D=p

C. A=s, B=t ,C=q, D=r

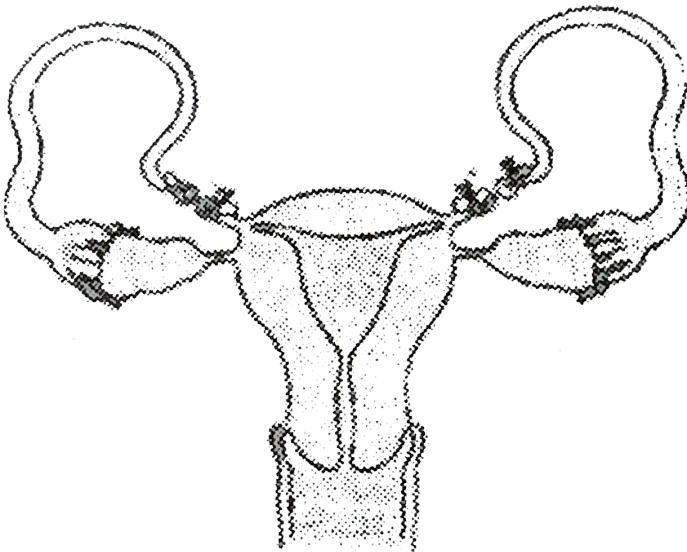
D. A=s, B=q, C=r ,D=p

**Answer: D**



**Watch Video Solution**

**42.** What is the figure given below showing in particular ?



A. Tubectomy

B. Vasectomy

C. Ovarian cancer

D. Uterine cancer

**Answer: A**



**Watch Video Solution**

**43.** A vasectomy prevents :

A. production of semen

B. a man from having an erection

C. productions of sperm in the testes

D. movement of sperm into the urethra

**Answer: D**



**Watch Video Solution**

**44.** One of the legal methods of birth control is

A. by having coitus at the time of day break

B. by a premature ejaculation during coitus

C. abortion by taking an appropriate medicine

D. by abstaining from coitus from day 10 to 17 of the menstrula cycle

**Answer: C**



**Watch Video Solution**

**45. Artificial insemination means**

A. transfer of sperms of husband to a test tube containing ova

B. artificial introduction of sperm of a healthy donor into the vagina

C. introduction of sperms of a healthy donor directly into the ovary

D. transfer of sperms of a healthy donor to a test tube containing ova

**Answer: B**



**Watch Video Solution**

**46.** Induced abortion is also called .

A. IUD

B. PID

C. STD

D. MTP

**Answer: D**



**Watch Video Solution**



47. Oral contraceptive pregnancy by :

- A. killing the ovum
- B. blocking fertilization
- C. preventing ovulation
- D. preventing implantation

**Answer: C**



**Watch Video Solution**

**48.** Which of the following is a hormone releasing IUD ?

A. Cu7

B. LNG-20

C. Cu-T

D. Multiload 375

**Answer: B**



**Watch Video Solution**

**49.** Assisted reproductive to technology. IVF involves transfer of

A. embryo with 16 blastomeres into the fallopian tube.

B. zygote into the fallopian tube

C. ovum into the fallopian tube

D. zygote into the uterus.

**Answer: B**



**Watch Video Solution**

50. Tubectomy is a method of sterilization in which :

A. uterus is removed surgically

B. ovaries are removed surgically

C. small part of vas deferens is removed or tied up.

D. small part of the fallopian tube is removed or tied up.

**Answer: D**





[Watch Video Solution](#)

51. In which technique, the donor semen is artificially introduced in to the uterus?

- A. Intra-uterine insemination
- B. Intra-vaginal insemination
- C. Gamete intra Fallopian transfer
- D. Intra cytoplasmic sperm injection

**Answer: A**



[Watch Video Solution](#)

52. IUDs which are used by females :

A. act as spermicidal jellies.

B. block the entry of sperms into vagina.

C. are implanted under the skin and they release progesterone and estrogen.

D. release copper ions in the uterus that increase phagocytosis of sperm

**Answer: D**



**Watch Video Solution**

53. The technique used to block the passage of sperm in male is \_\_\_\_\_

A. tubectomy

B. vasectomy

C. rhythm method

D. coitus interruptus

**Answer: B**



**Watch Video Solution**

54. In case of a couple where the male is having a very low sperm count, which technique will be suitable for fertilisation

A. Intra uterine transfer

B. Artificial insemination

C. Intra cytoplasmic sperm injection

D. Gamete intra cytoplasmic fallopian transfer

**Answer: B**



Watch Video Solution



55. Which of the following statements is wrong ?

A. Test tube baby grows inside test tube.

B. Test tube baby grows following uterine fertilization.

C. Test tube baby grows following uterine mother's womb.

D. Test tube away grows within surrogate mother's womb.

**Answer: A**



**View Text Solution**

**56.** Which is the hormonal method of birth control ?

A. Pill

B. IUD

C. Femidom

D. Vasectomy

**Answer: A**



**Watch Video Solution**

**57. Which of the following is not a sexually transmitted disease ?**

A. Syphilis

B. Encephalitis

C. Trichomoniasis

D. Acquired Immuno Deficiency Syndrome

**Answer: B**



**Watch Video Solution**

**58.** A contraceptive pill prevents ovulation by :

A. blocking fallopian tube

B. inhibiting release of FSH and LH

C. Stimulating release of FSH and LH

D. causing immediate degeneration of  
released unsuitable

**Answer: B**



**Watch Video Solution**

**59.** Progestasert is an IUD which makes the uterus unsuitable and cervix hostile to the sperms as they are

- A. ideal contraceptive
- B. copper releasing IUDs
- C. non-medicated IUDs
- D. hormone releasing IUDs

**Answer: D**



**Watch Video Solution**

**60.** Assisted reproductive technologies (ART) do not include

A. Artificial insemination

B. Gamete intra Fallopian transfer

C. Zygote extra fallopian transfer

D. In vitro fertilization and embryo transfer

**Answer: C**



**Watch Video Solution**

**61.** A childless couple can be assisted to have a child through a technique called GIFT. The full form of this technique is :

- A. gamete intra fallopian transfer
- B. germ cell internal fallopian transfer
- C. gamete inseminated fallopian transfer
- D. gamete internal fertilization and transfer

**Answer: A**



**Watch Video Solution**

**62. Amniocentesis involves examination of :**

A. membrane

B. skin cells

C. sex organs

D. amino acids

**Answer: B**





Watch Video Solution

63. Which of the following approaches does not give the defined action of contraceptive

(a)	Barrier methods	Prevent fertilization
(b)	Intra uterine devices	Increase phagocytosis of sperms, suppress sperm motility and fertilizing capacity of sperms
(c)	Hormonal contraceptives	Prevent/retard entry of sperms, prevent ovulation and fertilization
(d)	Vasectomy	Prevents spermatogenesis



Watch Video Solution

**64.** In context of Amniocentesis, which of the following statement is incorrect

A. It is usually done when a woman is between 14-16 weeks pregnant.

B. It can be used for detection of Down syndrome

C. It can be used for detection of Cleft palate.

D. It is used for prenatal sex determination.

**Answer: C**



**Watch Video Solution**

**65. Which of the following is hormone releasing IUD ?**

A. LNG-20

B. Cu7

C. Lippes loop

D. Multiload 375

**Answer: A**



**Watch Video Solution**

**66.** Which of the following is incorrect regarding vasectomy?

- A. Irreversible sterility
- B. Vasa deferentia is cut and tied
- C. No sperm occurs in seminal fluid
- D. No sperm occurs in epididymis

**Answer: D**



**Watch Video Solution**

**67.** Embryo with more than 16 blastomeres formed due to in vitro fertilization is transferred into :

A. Cervix

B. Uterus

C. Fimbriae

D. Fallopian tube

**Answer: B**



**Watch Video Solution**

**68.** The method of directly injecting a sperm into ovum in assisted reproductive technology is called

- A. ET
- B. ICSI
- C. GIFT
- D. ZIFT

**Answer: B**



**Watch Video Solution**

**69.** Increased IMR and decreased MMR in a population will

- A. result in decline in growth rate
- B. result in an explosive population
- C. cause rapid increase in growth rate
- D. not cause significant change in growth rate

**Answer: D**



**Watch Video Solution**

**70.** Intensity lactating mothers do not generally conceive due to the

- A. suppression of fertilisation
- B. suppression of gonadotropins
- C. suppression of gametic transport
- D. hyper secretion of gonadotropins



**Answer: B**



**Watch Video Solution**

**71.** Sterilisation techniques are generally full proof methods of contraception with least side effects. Yet, this is the last option for the couples because

(i) It is almost irreversible

(ii) of the misconception that it will reduce sexual urge/drive

(iii) it is a surgical procedure

(iv) of lack of sufficient facilities in many parts of the country

Choose the correct option

A. I and ii

B. ii and iii

C. ii and iv

D. I, ii , iii and iv

**Answer: D**



**Watch Video Solution**

72. A national level approach to build up a reproductively healthy society was taken up in our country in

A. 1950s

B. 1960s

C. 1980s

D. 1990s

**Answer: A**



**Watch Video Solution**

**73.** Emergency contraceptives are effective if used within

- A. 72 hrs if coitus
- B. 72 hrs of ovulation
- C. 72 hrs of menstruation
- D. 72 hrs of implantation

**Answer: A**



**Watch Video Solution**

74. Choose the right one among the statements given below.

A. IUDs suppress gametogenesis

B. IUDs once inserted need not be replaced.

C. IUDs are general inserted by the user herself.

D. IUDs increase phagocytosis reaction in the uterus

**Answer: D**





75. Following statements are given regarding MTP. Choose the correct options given below.

(i) MTPs are generally advised during first trimester

(ii) MTPs are used as a advised during first trimester

(iii) MTPs are always surgical

(iv) MTPs require the assistance of qualified medical personnel.

A. ii and iii

B. ii and iii

C. I and iv

D. I and ii

**Answer: C**



**Watch Video Solution**

**76.** From the sexually transmitted diseases mentioned below, identify the one which does not specifically affect the sex organs.

A. Syphilis

B. AIDS

C. Gonorrhoea

D. Genital warts

**Answer: B**



**Watch Video Solution**

77. Condoms are one of the most contraceptives because of the following reasons



- A. these are effective barriers for insemination.
- B. these help in reducing the risk of STDs.
- C. they do not interface with coital act.
- D. all of the above

**Answer: D**



**Watch Video Solution**

**78.** Choose the correct statement regarding the ZIFT procedure

A. Ova collected from a female donar are transferred to the fallopian tube to facilitate zygote formation.

B. Zygote is collected from a female donar and transferred ot the fallopian tube.

C. Zygote is collected from a female donar and transferred to the uterus.

D. Ova collected from a female donar and transferred to the uterus.

**Answer: B**

---



[Watch Video Solution](#)

79. The correct surgical procedure as a contraceptive method is

A. Vasectomy

B. Castration

C. Ovarieetomy

D. Hysterectomy

**Answer: A**



[Watch Video Solution](#)

**80.** Diaphragms are contraceptive devices used by the females. Choose the correct option from the statements given below

(i) They are introduced into the uterus

(ii) They are placed to cover the cervical region

(iii) They acts as physical barriers for sperm entry

(iv) They act as spermicidal agents.

A. I and ii

B. I and iii

C. ii and iii

D. iii and iv

**Answer: C**



**Watch Video Solution**

**81.** Consider the following statements and select the option stating which ones are true (T) and which ones are false (F)

- (i) Abortions could happen spontaneously too
- (ii) Infertility is the inability to produce viable

offspring due to defects in the female partner only.

(iii) Complete lactation could help in contraception

(iv) Creating awareness can help create a reproductively healthy society.

A. B and D are correct

B. B and C are correct

C. A and B are correct

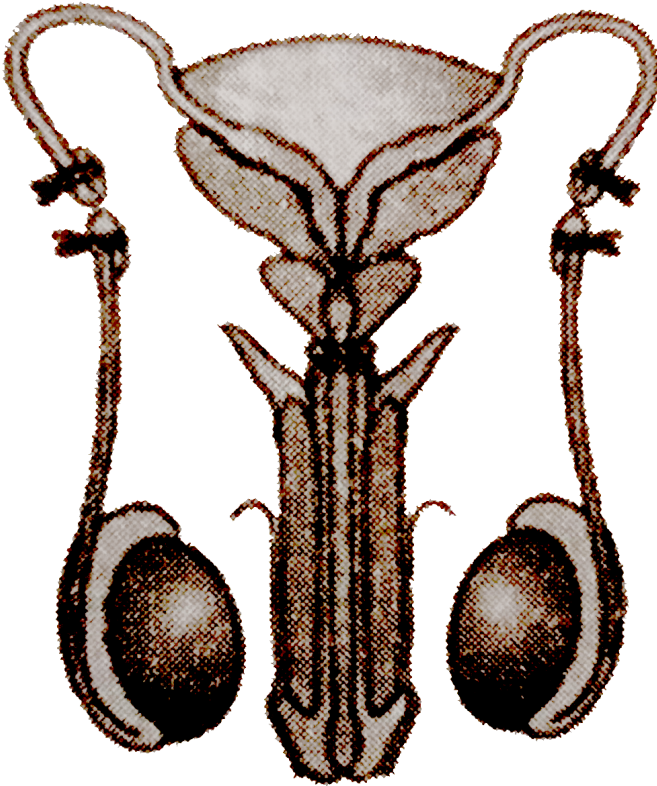
D. A and D are correct

**Answer: A**



Watch Video Solution

82. Identify the figure given below ?



A. Tubectomy

B. vasectomy

C. Cryptorchidism

D. Prostate cancer

**Answer: B**



**Watch Video Solution**

**83.** Match the column I with column II, choose the answer which gives the correct



combination of the two columns:

Column I	Column II
(a) Natural control	i. Nirodh
(b) Barrier method	ii. Saheli
(c) IUD	iii. Tubectomy
(d) Surgical method	iv. LAM
(e) Oral contraceptive	v. Lippes loop

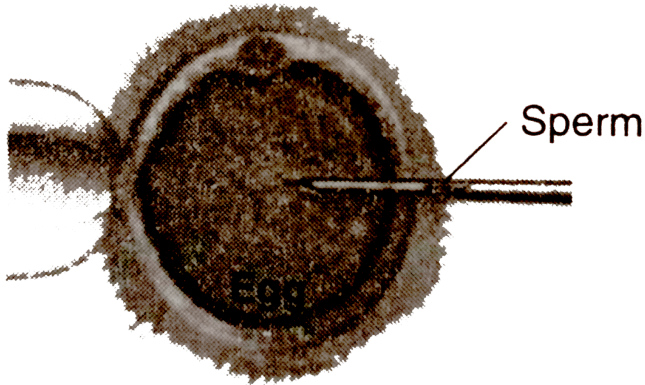
- A. (a) (b) (c) (d) (e)  
(ii) (iv) (v) (iv) (iii)
- B. (a) (b) (c) (d) (e)  
(ii) (iv) (iii) (v) (i)
- C. (a) (b) (c) (d) (e)  
(iv) (i) (v) (iii) (ii)
- D. (a) (b) (c) (d) (e)  
(iv) (i) (v) (ii) (iii)

**Answer: C**



**Watch Video Solution**

84. What is the figure given below showing one of the assisted reproductive technologies?



A. ZIFT

B. IUT

C. GIFT

D. ICSI

**Answer: D**



**Watch Video Solution**

**85.** Read the following five statements (A to E) and select the option with all correct statements :

Surgical method contraceptive prevents the meeting of male and female gametes.

(B) The hormonal IUD is less effective at preventing pregnancy than the copper IUD.

(C) Oral pills are very popular contraceptives

among educated urban women.

(D) embryo transfer technique, 8-celled embryos are transferred into the fallopian tube.

Both vasectomy and tubectomy are highly effective contraceptive methods with good reversibility.

A. (A), (D) and (E)

B. (B), (C) and (E)

C. (A),(B) and (D)

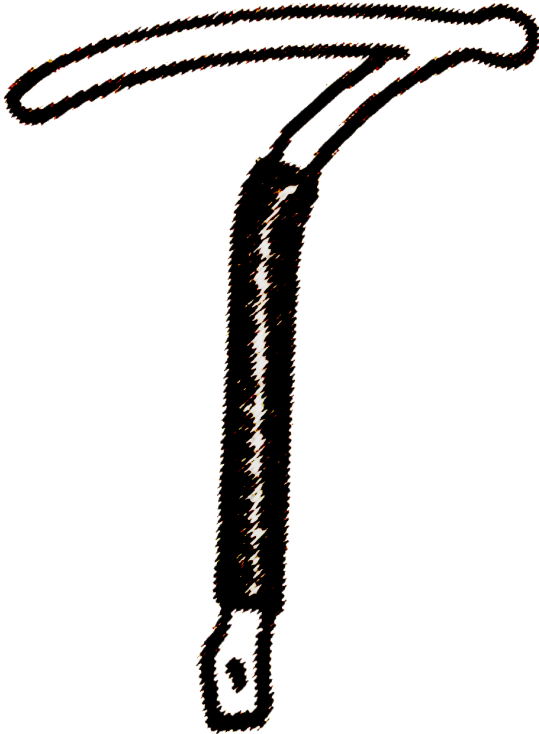
D. (A), (C) and (D)

**Answer: D**



Watch Video Solution

86. Identify the image give below used as an IUD ?



A. Cu7

B. CuT

C. Multiload 375

D. Progestasert

**Answer: A**



**Watch Video Solution**

**87.** Match the column I with the column II, choose the answer which gives the correct

combination of the two columns:

Column I	Column II
(a) AIDS	i. HPV
(b) Syphilis	ii. HIV
(c) Chancroid	iii. <i>Haemophilus</i>
(d) Gonorrhoea	iv. <i>Treponema</i>
(e) Genital warts	v. <i>Neisseria</i>

- A. (a) (b) (c) (d) (e)  
(ii) (i) (v) (iv) (iii)
- B. (a) (b) (c) (d) (e)  
(ii) (iii) (v) (i) (iv)
- C. (a) (b) (c) (d) (e)  
(ii) (iv) (iii) (v) (i)
- D. (a) (b) (c) (d) (e)  
(iii) (iv) (ii) (v) (i)

**Answer: C**



**Watch Video Solution**

**88.** Which one of the following statements is wrong ?

A. The national 'family planning program' was launched in India as early as 1951.

B. MTPs are considered relatively safe upto second trimester.

C. Contraceptive methods are commonly used to prevent unwanted pregnancies.

D. In India, Nirodh is popularly marketed condom made of latex.



**Answer: B**



**Watch Video Solution**

**89.** Match the column I with the column II, choose the answer which gives the correct combination for the two columns :

<b>Column I</b>	<b>Column II</b>
(a) Condom	i. Contain copper
(b) Diaphragm	ii. Sheath for penis
(c) IUD	iii. Implant under skin
(d) Depo-Provera	iv. covers cervix
(e) Norplant	v. Injectionable contraceptive

A. (a) (b) (c) (d) (e)  
(ii) (iv) (iii) (v) (i)

- B. (a) (b) (c) (d) (e)  
(ii) (i) (v) (iv) (iii)
- C. (a) (b) (c) (d) (e)  
(iv) (i) (v) (iii) (ii)
- D. (a) (b) (c) (d) (e)  
(ii) (iv) (i) (v) (iii)

**Answer: D**



**Watch Video Solution**

**90.** Which one of the following statements is incorrect?

A. Medical termination of pregnancy is legalised in out country.

B. Coitus interruptus is one of the oldest forms of contraceptive methods known to man.

C. In vitro fertilization (IVF) is a simple, cost-effective procedure for infertile couples.

D. Saheli is the world's first non-steroidal oral contraceptive pills.

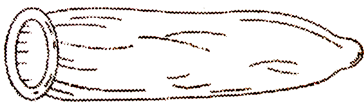
**Answer: C**

---



**Watch Video Solution**

**91.** A diagram showing two contraceptive sheaths are given below. Correctly identify them with functions :



**(A)**



**(B)**

A. A-Male condom for penis, collects semen

B-Female condom, sheaths vaginal walls

B. A-female condom, sheaths vaginal walls

B-Male condom for penis, collects semen

C. A-Male condom, sheaths vaginal walls

B-Female condom for penis, collects  
semen

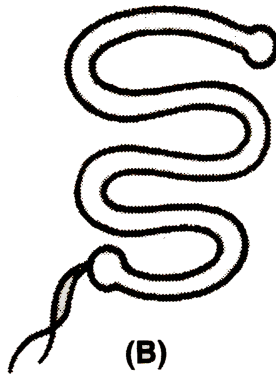
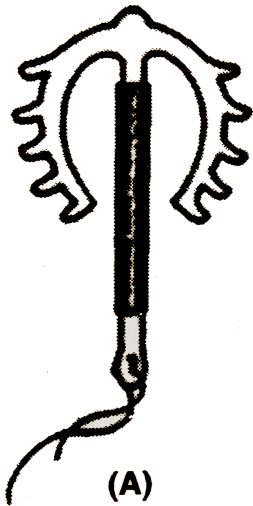
D. None of the above

**Answer: A**



**Watch Video Solution**

92. Two Intra Uterine Devices (IUD) are given below. Correctly identify them by selecting the option:



A. A-LNG-20, non-medicated IUD

B-Lippes loop, hormonal IUD

B. A-Multiload 375,non-medicated IUD

B-Lippes loop, non-medicated IUD

C. A-Lippes loop, hornonal IUD

B-Copper T , non-medicated IUD

D. A-Lippes loop, hormonal IUD

B-Copper 7, non-medicated IUD

**Answer: B**



**Watch Video Solution**

93. Select the correct option :

(a) Population explosion	i. Clomid
(b) Emergency contraception	ii. Family planning
(c) MTP	iii. Morning after pill
(d) Fertility drug	iv. Surgical abortion
(e) Population control	v. High birth rate

A. (a) (b) (c) (d) (e)  
(v) (iii) (iv) (i) (ii)

B. (a) (b) (c) (d) (e)  
(ii) (i) (v) (iv) (iii)

C. (a) (b) (c) (d) (e)  
(iv) (i) (v) (iii) (ii)

D. (a) (b) (c) (d) (e)  
(v) (iv) (i) (ii) (iii)

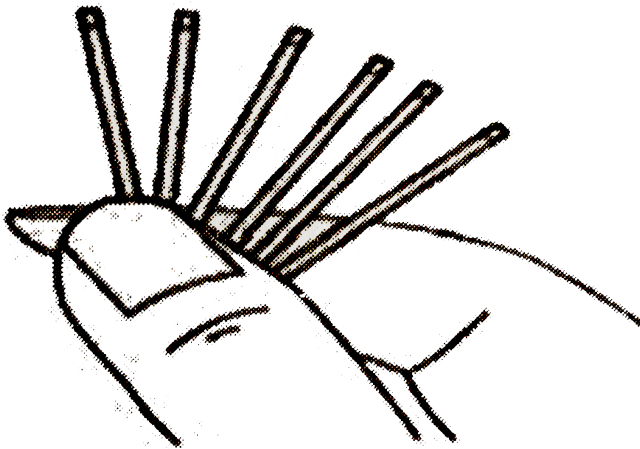
**Answer: A**



**Watch Video Solution**



94. Identify the image of the device give below used as capsules surgically implanted under skin slowly release hormone that blocks ovulation?



A. Levonorgestrel

B. Pregelastert

C. Norplant

D. Depo-Provera

**Answer: C**



**Watch Video Solution**

**95.** Read the following statements and choose the correct options.

I. Seheli-the new oral contraceptive for the females contains a steroidal preparation.

II. Reproductive and Child Health (RCH)

Programme was launched in India in October 1997.

III. In addition to preventing pregnancy, the birth control pill can have all sorts of side effects.

IV. Sterilisation procedure in the female is called 'vasectomy'.

V. Multiple births is a real side effect to the fertility drugs.

A. II only is correct

B. II III and V are correct

C. III and IV only are correct

D. I and IV only are correct

**Answer: B**



**Watch Video Solution**

## Assertion Reason Type Questions

1. (A) : Each and every organism is capable to live only for a limited period of time.

(R) : The period from birth to the natural death of an organism is termed its life-span.

- A. If both (A) and (R) are true and (R) is the correct explanation of (A)
- B. If both (A) and (R) are true but (R) is not the correct explanation of (A)
- C. If (A) is true but (R) is true
- D. If both (A) and (R) are false.

**Answer: b**



**Watch Video Solution**

2. (A): Each organism has adopted its own mechanism of reproduction.

(R) : Living organisms show enormous diversity.

A. If both (A) and (R) are true and (R ) is the correct explanation of (A)

B. If both (A) and (R) are true but (R ) is not the correct explanation of (A)

C. If (A) is true but (R) is true

D. If both (A) and (R) are false.

**Answer: a**



**Watch Video Solution**

**3. (A) :** A spore is a small , microsopic , unicellular reproductive body.

**(R) :** Spores are produced by bacteria and protozoa.

**A.** If both (A) and (R) are true and (R ) is the correct explanation of (A)

B. If both (A) and (R) are true but (R) is not the correct explanation of (A)

C. If (A) is true but (R) is true

D. If both (A) and (R) are false.

**Answer: b**



**Watch Video Solution**

4. (A) : Sexual reproduction involves the formation and union of two gametes.



(R) : Gametes produced involves the formation and union of two gametes.

A. If both (A) and (R) are true and (R ) is the correct explanation of (A)

B. If both (A) and (R) are true but (R ) is not the correct explanation of (A)

C. If (A) is true but (R) is false

D. If both (A) and (R) are false.

**Answer: c**



**Watch Video Solution**

5. (A): A haploid parent produces gametes by meiotic division.

(R) Majority of animals possess a haploid body.

A. If both (A) and (R) are true and (R) is the correct explanation of (A)

B. If both (A) and (R) are true but (R) is not the correct explanation of (A)

C. If (A) is true but (R) is false

D. If both (A) and (R) are false.

**Answer: d**



**Watch Video Solution**

6. (A): In majority of algae, fishes and amphibians external fertilization takes place.

(R): These organisms reproduce in water.

A. If both (A) and (R) are true and (R) is the correct explanation of (A)

B. If both (A) and (R) are true but (R) is not the correct explanation of (A)

C. If (A) is true but (R) is true

D. If both (A) and (R) are false.

**Answer: a**



**Watch Video Solution**

7. (A): Sexually reproducing organisms begin life as a single cell.

(R) : Zygote is a vital link that ensures continuity of species.

A. If both (A) and (R) are true and (R ) is the correct explanation of (A)

B. If both (A) and (R) are true but (R ) is not the correct explanation of (A)

C. If (A) is true but (R) is true

D. If both (A) and (R) are false.

**Answer: b**



**Watch Video Solution**

8. (A) : Parthenogenesis means the growth and development of an egg without fertilization.

(R) : Most species that reproduce parthenogenetically also engage in sexual reproduction.

A. If both (A) and (R) are true and (R ) is the correct explanation of (A)

B. If both (A) and (R) are true but (R ) is not the correct explanation of (A)

C. If (A) is true but (R) is true

D. If both (A) and (R) are false.

**Answer: b**



**Watch Video Solution**

9. (A) : Lower plants usually reproduce by asexual means.

(R) : It helps rapid growth and multiplication in lesser time without involvement of gametes.

A. If both (A) and (R) are true and (R ) is the correct explanation of (A)

B. If both (A) and (R) are true but (R) is not the correct explanation of (A)

C. If (A) is true but (R) is true

D. If both (A) and (R) are false.

**Answer: a**



**Watch Video Solution**

**10. (A):** Progressive degeneration of sexuality is a primitive character in plants.



(R) : Sporophytic phase predominates in thallophytes and bryophytes.

A. If both (A) and (R) are true and (R) is the correct explanation of (A)

B. If both (A) and (R) are true but (R) is not the correct explanation of (A)

C. If (A) is true but (R) is false

D. If both (A) and (R) are false.

**Answer: d**



**Watch Video Solution**

11. (A) : Accessory organs of the flowers are sterile parts.

(R) : They develop as modified leaves for protecting the essential organs.

A. If both (A) and (R) are true and (R ) is the correct explanation of (A)

B. If both (A) and (R) are true but (R ) is not the correct explanation of (A)

C. If (A) is true but (R) is true

D. If both (A) and (R) are false.

**Answer: b**



**Watch Video Solution**

**12. (A) :** Pollens are produced in microsporangia after meiotic division.

**(R) :** They are discharged at 4-celled stage representing male gametophyte.

A. If both (A) and (R) are true and (R) is the correct explanation of (A)

B. If both (A) and (R) are true but (R) is not the correct explanation of (A)

C. If (A) is true but (R) is true

D. If both (A) and (R) are false.

**Answer: c**



**Watch Video Solution**

**13. (A) :** Exine of pollen is chiefly made up of sporopollenin.

(R): Sporopollenin is chemically a polymer of fructose.

A. If both (A) and (R) are true and (R) is the correct explanation of (A)

B. If both (A) and (R) are true but (R) is not the correct explanation of (A)

C. If (A) is true but (R) is false

D. If both (A) and (R) are false.

**Answer: c**



**Watch Video Solution**

14. (A) : Ovule is an integumented megasporangium .

(R) It does not dehisce at maturity and retains megaspore permanently inside.

A. If both (A) and (R) are true and (R ) is the correct explanation of (A)

B. If both (A) and (R) are true but (R ) is not the correct explanation of (A)

C. If (A) is true but (R) is true

D. If both (A) and (R) are false.

**Answer: a**



**Watch Video Solution**

15. (A) : Incampylotropous type the body of ovule is horseshoe shaped.

(R) : the micropyle and chalaza do not lie in a straight line.

A. If both (A) and (R) are true and (R ) is the correct explanation of (A)

B. If both (A) and (R) are true but (R) is not the correct explanation of (A)

C. If (A) is true but (R) is true

D. If both (A) and (R) are false.

**Answer: a**



**Watch Video Solution**

**16. (A) :** Cleistogamous flowers are usually self pollinated.



(R) : These remain unopened and are found underground.

A. If both (A) and (R) are true and (R ) is the correct explanation of (A)

B. If both (A) and (R) are true but (R ) is not the correct explanation of (A)

C. If (A) is true but (R) is true

D. If both (A) and (R) are false.

**Answer: a**



**Watch Video Solution**

17. (A) : All graminaceous flowers are always wing pollinated.

(R) : They produce very little pollen grains which are smooth and dry.

A. If both (A) and (R) are true and (R ) is the correct explanation of (A)

B. If both (A) and (R) are true but (R ) is not the correct explanation of (A)

C. If (A) is true but (R) is true

D. If both (A) and (R) are false.

**Answer: c**



**Watch Video Solution**

**18. (A) :** Insect visit flowers to collect honey.

**(R):** Attraction of floweres prevents the insects from damaging other parts of the plant.

A. If both (A) and (R) are true and (R ) is the correct explanation of (A)

B. If both (A) and (R) are true but (R) is not the correct explanation of (A)

C. If (A) is true but (R) is false

D. If both (A) and (R) are false.

**Answer: d**



**Watch Video Solution**

**19. (A) :** Mammalian ova produces an enzyme hyaluronidase.

(R): This enzyme is required to promote cleavage divisions after fertilization.

A. If both (A) and (R) are true and (R) is the correct explanation of (A)

B. If both (A) and (R) are true but (R) is not the correct explanation of (A)

C. If (A) is true but (R) is false

D. If both (A) and (R) are false.

**Answer: d**



**Watch Video Solution**

20. (A) : Testes of mammals are present outside abdominal cavity in scrotal sacs.

(R) : Maturation of sperm needs low temperature

A. If both (A) and (R) are true and (R) is the correct explanation of (A)

B. If both (A) and (R) are true but (R) is not the correct explanation of (A)

C. If (A) is true but (R) is true

D. If both (A) and (R) are false.

**Answer: a**



**Watch Video Solution**

**21. (A) :** Whales and elephants have abdominal testes.

**(R) :** Being poililothermous cooling of testes is not required in these animals

A. If both (A) and (R) are true and (R ) is the correct explanation of (A)

B. If both (A) and (R) are true but (R) is not the correct explanation of (A)

C. If (A) is true but (R) is false

D. If both (A) and (R) are false.

**Answer: c**



**Watch Video Solution**

**22. (A) :** Leyding cells are found without seminiferous tubules of testes.



(R) : These cells provide nourishment to development spermatozoa.

A. If both (A) and (R) are true and (R ) is the correct explanation of (A)

B. If both (A) and (R) are true but (R ) is not the correct explanation of (A)

C. If (A) is true but (R) is true

D. If both (A) and (R) are false.

**Answer: d**



**Watch Video Solution**

**23. (A) :** Androgens are sometimes called anabolic steroids

**(R) :** They stimulate the growth of muscles.

A. If both (A) and (R) are true and (R) is the correct explanation of (A)

B. If both (A) and (R) are true but (R) is not the correct explanation of (A)

C. If (A) is true but (R) is false

D. If both (A) and (R) are false.

**Answer: a**



**Watch Video Solution**

**24. (A) :** Cowpers glands are present in male mammals.

**(R) :** Their secretion is acidic promoting sperm motility.

A. If both (A) and (R) are true and (R ) is the correct explanation of (A)

B. If both (A) and (R) are true but (R) is not the correct explanation of (A)

C. If (A) is true but (R) is false

D. If both (A) and (R) are false.

**Answer: c**



**Watch Video Solution**

**25. (A) :** The oocyte of a mammal is enclosed in a perforated membrane called theca externa.

(R) : This membrane secretes the female hormone progesterone.

A. If both (A) and (R) are true and (R) is the correct explanation of (A)

B. If both (A) and (R) are true but (R) is not the correct explanation of (A)

C. If (A) is true but (R) is false

D. If both (A) and (R) are false.

**Answer: d**



**Watch Video Solution**

**26. (A):** Fertilization in mammals occurs in uterus.

**(R) :** The embryo get implanted before cleavage divisions.

A. If both (A) and (R) are true and (R ) is the correct explanation of (A)

B. If both (A) and (R) are true but (R ) is not the correct explanation of (A)

C. If (A) is true but (R) is true

D. If both (A) and (R) are false.

**Answer: d**



**Watch Video Solution**

27. (A) : The clitoris is a small finger-like structure in females.

(R) : It consists of erectile tissue and is homologous to penis of male.

A. If both (A) and (R) are true and (R ) is the correct explanation of (A)

B. If both (A) and (R) are true but (R) is not the correct explanation of (A)

C. If (A) is true but (R) is true

D. If both (A) and (R) are false.

**Answer: b**



**Watch Video Solution**

**28. (A) :** If acrosome is removed from a sperm it will fail to penetrate into ovum



(R) : Acrosome produces sperm lysins called hyaluronidase.

A. If both (A) and (R) are true and (R ) is the correct explanation of (A)

B. If both (A) and (R) are true but (R ) is not the correct explanation of (A)

C. If (A) is true but (R) is true

D. If both (A) and (R) are false.

**Answer: a**



**Watch Video Solution**

**29. (A) :** Menopause occurs in females at the age of 45-50 years.

**(R) :** Ability to reproduce is lost in females after menopause.

A. If both (A) and (R) are true and (R ) is the correct explanation of (A)

B. If both (A) and (R) are true but (R ) is not the correct explanation of (A)

C. If (A) is true but (R) is true

D. If both (A) and (R) are false.

**Answer: b**



**Watch Video Solution**

**30. (A) :** The cleavage in mammalian ova is simple holoblastic.

**(R):** The eggs of mammal are macrolecithal and telolecithal.

A. If both (A) and (R) are true and (R ) is the correct explanation of (A)

B. If both (A) and (R) are true but (R) is not the correct explanation of (A)

C. If (A) is true but (R) is true

D. If both (A) and (R) are false.

**Answer: c**



**Watch Video Solution**

**31. (A) :** The process of delivery of the foetus is called parturition.

(R) : It is induced by a complex neuro-endocrine mechanism.

A. If both (A) and (R) are true and (R ) is the correct explanation of (A)

B. If both (A) and (R) are true but (R ) is not the correct explanation of (A)

C. If (A) is true but (R) is false

D. If both (A) and (R) are false.

**Answer: b**



**Watch Video Solution**

32. (A) : Barrier methods of contraceptive are available only for females.

(R) : It prevents the first cleavage divisions of zygote.

A. If both (A) and (R) are true and (R ) is the correct explanation of (A)

B. If both (A) and (R) are true but (R ) is not the correct explanation of (A)

C. If (A) is true but (R) is true

D. If both (A) and (R) are false.

**Answer: d**



**Watch Video Solution**

**33. (A) :** Sterilization procedure in the male is called vasectomy.

**(R) :** In this epididymis is removed preventing sperm maturity and motility.

A. If both (A) and (R) are true and (R ) is the correct explanation of (A)

B. If both (A) and (R) are true but (R) is not the correct explanation of (A)

C. If (A) is true but (R) is false

D. If both (A) and (R) are false.

**Answer: c**



**Watch Video Solution**

**34. (A) : IUDs are effective contraceptive devices in females.**



(R) : These increase phagocytosis of sperms within uterus.

A. If both (A) and (R) are true and (R ) is the correct explanation of (A)

B. If both (A) and (R) are true but (R ) is not the correct explanation of (A)

C. If (A) is true but (R) is false'

D. If both (A) and (R) are false.

**Answer: a**



**Watch Video Solution**

**35. (A) :** Government of India legalised MTP in the year 1971.

**(R) :** It is mainly meant to get rid of unwanted pregnancies.

A. If both (A) and (R) are true and (R ) is the correct explanation of (A)

B. If both (A) and (R) are true but (R ) is not the correct explanation of (A)

C. If (A) is true but (R) is true

D. If both (A) and (R) are false.

**Answer: a**



**Watch Video Solution**

**36. (A) :** 'Saheli' is the world's first nonsteroidal oral contraceptive pill.

**(R) :** It has been developed b Central Drug Research Institute, Lucknow.

A. If both (A) and (R) are true and (R ) is the correct explanation of (A)

B. If both (A) and (R) are true but (R) is not the correct explanation of (A)

C. If (A) is true but (R) is true

D. If both (A) and (R) are false.

**Answer: a**



**Watch Video Solution**