

## BIOLOGY

### BOOKS - TRUEMAN BOOK COMPANY BIOLOGY (HINGLISH)

### HUMAN HEALTH AND DISEASE

#### Multiple Choice Questions

1. Which of the following is a set of bacterial diseases?

A. Cholera, typhoid and mumps

B. Diphtheria, leprosy and plague

C. Malaria, mumps and poliomyelitis

D. Tetanus, tuberculosis and measles

**Answer: B**



**Watch Video Solution**

2. Which of the following disease is not transmitted through contaminated water?

A. Typhoid

B. Diphtheria

C. Hepatitis A

D. Amoebiasis

**Answer: B**



**Watch Video Solution**

**3. BCG stands for**

A. Bacterio-chemical gangrene

B. Bacteria culture growth

C. Bacillus Calmette Guerin

D. Bacterial cell genome

**Answer: C**



**Watch Video Solution**

**4. Mantoux test is for**

- A. scarlet fever
- B. diphtheria
- C. rheumatoid fever
- D. tuberculosis

**Answer: D**



**Watch Video Solution**



5. Which of the following diseases is not caused by virus

A. AIDS

B. Rabies

C. Mumps

D. Tuberculosis

**Answer: D**



**Watch Video Solution**

6. Food poisoning (botulism) is caused by the infection of a species of

A. Azotobacter

B. Clostridium

C. Lactobacillus

D. Rhizobium

**Answer: B**



**Watch Video Solution**

7. Fever, delirium, slow pulse, abdominal tenderness and rose coloured rash indicate the disease.

A. measles

B. tetanus

C. typhoid

D. chickenpox

**Answer: C**



**Watch Video Solution**

8. Which of the following is not immunized by triple antigen?

A. Typhoid

B. tetanus

C. Diphtheria

D. Whooping cough

**Answer: A**



**Watch Video Solution**

9. A common disease of domesticated animals is

A. anthrax

B. syphilis

C. cholera

D. diphtheria

**Answer: A**



**Watch Video Solution**

**10.** Anthrax spores are extremely resistant to environmental changes and therefore may be used in

- A. viral research
- B. bio terrorism
- C. industrial processes
- D. biochemical mutations

**Answer: B**



**Watch Video Solution**

**11. ATS inoculation protects our body from**

- A. tetanus
- B. tuberculosis

C. trachoma

D. typhoid

**Answer: A**



**Watch Video Solution**

**12. Toxin produced by tetanus affects**

A. jaw bones

B. voluntary muscles

C. cardiac muscles

D. respiratory system

**Answer: B**



**Watch Video Solution**

**13. Bubonic plague is transmitted by**

A. Aedes

B. Xenopsylla

C. Cockroach

D. Anopheles

**Answer: B**



**Watch Video Solution**



14. Match the following bacteria with the diseases and choose the correct option

Column I	Column II
A <i>Treponemapollidum</i>	1. Plague
B <i>Yersinia pestis</i>	2. Anthrax
C <i>Bacillus anthracis</i>	3. Syphilis
D <i>Vibrio</i>	4. Cholera

A. A = 1, B = 3, C = 2, D = 4

B. A = 3, B = 1, C = 2, D = 4

C. A = 2, B = 3, C = 1, D = 4

D. A = 4, B = 3, C = 1, D = 2

**Answer: B**



[Watch Video Solution](#)

15. Which of the following is not a serological test for early diagnosis of syphilis?

- A. Montaux test
- B. VDRL
- C. Widal test
- D. All of the above

**Answer: B**



[Watch Video Solution](#)

16. Hansen's disease is another name for:

A. plague

B. leprosy

C. tetanus

D. none of these

**Answer: B**



**Watch Video Solution**

17. Which of the following is a eye infecting disease ?

A. Influenza

B. Trachoma

C. Anthrax

D. diphtheria

**Answer: B**



**Watch Video Solution**

**18. Varicella virus causes**

A. smallpox

B. influenza

C. chickenpox

D. respiratory infection

**Answer: C**



**Watch Video Solution**

**19.** Which of the following occurs only in humans?

A. Rabies

B. Malaria

C. Anthrax

D. Mumps

**Answer: D**



**Watch Video Solution**

**20.** Mumps is a viral disease caused by the inflammation of:

- A. parotid gland
- B. sublingual gland
- C. infraorbital gland
- D. submaxillary gland

**Answer: A**





[Watch Video Solution](#)

21. Which of the following diseases is not transmitted by houseflies ?

A. Cholera

B. Typhoid

C. Dysentery

D. Yellow fever

**Answer: D**



[Watch Video Solution](#)

22. The vector of 'breakbone fever' is:

A. Culex

B. Aedes

C. Anopheles

D. none of these

**Answer: B**



**Watch Video Solution**

23. Which one of the following pairs of disease can spread through blood transfusion



A. Hepatitis and AIDS

B. Hay fever and AIDS

C. Asthma and Hepatitis

D. Diabetes mellitus and Malaria

**Answer: A**



**Watch Video Solution**

**24.** Which of the following is sexually transmitted disorder?

A. Hepatitis E

B. Hepatitis B

C. Hepatitis A

D. typhoid

**Answer: B**



**Watch Video Solution**

**25. AIDS virus has**

A. single stranded DNA

B. single stranded RNA

C. double stranded dNA

D. double stranded RNA

**Answer: B**



**Watch Video Solution**

**26.** The confirmatory test used to diagnose AIDS is:

A. ESR

B. Widal

C. ELISA

D. Western Blot

**Answer: D**



[Watch Video Solution](#)

27. Western Blot test the assay detects:

A. WBCs

B. RBSs

C. TLC & DLC

D. Antibodies

**Answer: D**



[Watch Video Solution](#)

**28.** Expand ELISA

A. Enzyme Linked Immuno Sorbent Assay

B. Enzyme Linked Ion Sorbent Assay

C. Enzyme Linked Inductive Assay

D. None of the above

**Answer: A**



**Watch Video Solution**

**29.** 'AIDS day' is celebrated on:

A. 5<sup>th</sup> June

B. 1<sup>st</sup> October

C. 11<sup>th</sup> July

D. 1<sup>st</sup> December

**Answer: D**



**Watch Video Solution**

**30. Polio virus enters through:**

A. food and water

B. respiratory tract

C. urinogential tract

D. inoculation by mosquito

**Answer: A**



**Watch Video Solution**

**31.** The region in the body where the polio virus multiplies:

A. muscle cells

B. nerve cells

C. intestinal cells

D. none of these

**Answer: C**



**Watch Video Solution**

**32. Trypanosomiasis is transmitted by:**

A. louse

B. mayfly

C. tsetse fly

D. sandfly

**Answer: C**





[Watch Video Solution](#)

33. Select the incorrect pair

A. Xenopsylla - Plague

B. Culex - Malaria

C. Glossina - Trypanosomiasis

D. Aedes - Yellow fever

**Answer: B**



[Watch Video Solution](#)

**34.** Black water fever is caused by:

- A. Plasmodium vivax
- B. Plasmodium malareie
- C. Plasmodium ovale
- D. Plasmodium falciparum

**Answer: D**



**Watch Video Solution**

**35.** Cerebral malaria is caused by Plasmodium:

A. ovale

B. vivax

C. falciparum

D. all of these

**Answer: C**



**Watch Video Solution**

**36.** Infection of Ascaris occurs by

A. tsetse fly

B. mosquito bite

C. imperfectly cooked pork

D. contaminated food and water

**Answer: D**



**Watch Video Solution**

**37. Culex causes the disease:**

A. malaria

B. filariasis

C. yellow fever

D. sleeping sickness

**Answer: B**



**Watch Video Solution**

**38. Blood cancer is called:**

A. thrombosis

B. leukaemia

C. haemolysis

D. haemophilia

**Answer: B**



**Watch Video Solution**

**39.** The spread of cancerous cells to distant sites is termed

A. metastasis

B. metachrosis

C. metagenesis

D. metamorphosis

**Answer: A**



**Watch Video Solution**

**40.** Cancer of cervix is caused by:

- A. Pep pills
- B. Fatty diet
- C. Epstein-Barr Virus
- D. Human Papilloma Virus

**Answer: D**



**Watch Video Solution**

**41.** To which category multiple sclerosis belong?

A. Immunodeficiency diseases

B. Auto-immune diseases

C. Hypersensitivity

D. All of the above

**Answer: B**



**Watch Video Solution**

**42.** Cancer is generally caused due to activation of

.....to .....and/or inactivation of .....



A. Oncogene, tumour suppressor gene,  
protooncogene

B. Tumour suppressor gene, oncogene,  
protooncogene

C. Oncogene, protooncogene, tumour suppressor  
gene

D. Protooncogene, oncogene, tumour suppressor  
gene

**Answer: D**



**Watch Video Solution**

43. Which of the following diseases is associated with smoking?

A. Bronchitis

B. Emphysema

C. Lung cancer

D. All of these

**Answer: D**



**Watch Video Solution**

**44.** The substance that causes addiction to tobacco is:

A. nicotine

B. cocaine

C. caffeine

D. none of these

**Answer: A**



**Watch Video Solution**

45. Which organ in the body is most affected due to excessive intake of alcohol?

A. Liver

B. Intestines

C. Lungs

D. Spleen

**Answer: A**



**Watch Video Solution**

**46.** The factor that contributes most to the development of cirrhosis is:

- A. alcoholism
- B. high blood sugar
- C. high blood urea
- D. high cholesterol

**Answer: A**



**Watch Video Solution**

**47.** Fatty liver is syndrome ' is associated with:

- A. smoking
- B. alcoholism
- C. tea addiction
- D. measles

**Answer: B**



**Watch Video Solution**

**48.** The effect of alcohol on the CNS is as a:

- A. stimulant
- B. promoter

C. depressant

D. transmitter

**Answer: C**



**Watch Video Solution**

**49. Sleeping pills are made from:**

A. LSD

B. Cocaine

C. Barbiturates

D. Amphetamines

**Answer: C**



**Watch Video Solution**

**50. Which one is a correct match?**

- A. Bhang - Analgesis
- B. Cocaine - Opiate narcotics
- C. Morphine - Hallucinogen
- D. Barbiturate - Tranquilizer

**Answer: D**



**Watch Video Solution**



51. Which of the following is a synthetic drug?

A. LSD

B. Opium

C. Cocaine

D. Pethidine

**Answer: D**



**Watch Video Solution**

52. One of the following is a stimulant

A. LSD

B. Opium

C. Heroin

D. Cocaine

**Answer: D**



**Watch Video Solution**

**53. Cocaine is obtained from**

A. seeds and fruits

B. bark

C. roots

D. leaves and young twigs

**Answer: D**



**Watch Video Solution**

**54.** Thalidomide, a nonbarbiturate sedative drug given to pregnant women, was withdrawn in 1961 because it resulted in phocomelia or:

A. limb defect

B. early abortion

C. erythroblastosis foetalis

D. poor development of foetus

**Answer: A**



**Watch Video Solution**

**55.** Heroin, a synthetic drug is derived from:

A. ganja

B. opium

C. bhang

D. charas

**Answer: B**



**Watch Video Solution**

**56. Which part of poppy plant yields opium?**

- A. Dried seeds
- B. Dried leaves
- C. Dried roots
- D. Latex from unripe pods

**Answer: D**



**Watch Video Solution**

57. Heroin is:

- A. diacetyl morphine
- B. triacetyl morphine
- C. tetraacetyl morphine
- D. monoacetyl morphine

**Answer: A**



**Watch Video Solution**

58. Which of the following is not a hallucinogen?

A. LSD

B. Heroin

C. Charas

D. Marijuana

**Answer: B**



**Watch Video Solution**

**59.** Which of the following suppresses brain function and relieves intense pain?

A. Cocaine

B. Morphine

C. Amphetamine

D. All of these

**Answer: B**



**Watch Video Solution**

**60.** An opium derivative is:

A. brown sugar

B. ganja

C. hashish-charas



D. all of these

**Answer: A**



**Watch Video Solution**

**61.** The term 'brown suger ' is used for:

A. acetyl salicylate

B. 9-tetrahydrocannabinol

C. lysergic acid diethylamide

D. diacetylmorphine hydrochloride

**Answer: D**



[Watch Video Solution](#)

62. Drugs which induce dreamy state of unconsciousness are

- A. sedative
- B. barbiturate
- C. stimulant
- D. hallucinogen

**Answer: D**



[Watch Video Solution](#)

**63.** Ergot, which is an important source of a drug is obtained from:

A. Agaricus

B. Ephedra

C. Claviceps

D. Commiphora

**Answer: C**



**Watch Video Solution**

**64.** Match list I (drug) with list II (action) and select the correct answer using the codes gives below the lists:

` ([##GRB\\_OBJ\\_BIO\\_IIND\\_C60\\_E01\\_111\\_Q01.png](#)" width="80%")>

A. A = 2, B = 4, C = 1, D = 3

B. A = 4, B = 1, C = 2, D = 3

C. A = 1, B = 2, C = 4, D = 3

D. A = 3, B = 4, C = 2, D = 1

**Answer: B**



**Watch Video Solution**

65. *Atropa belladonna* yields the medicine used for:

A. malaria

B. checking the eyes

C. leprosy

D. constipation

**Answer: B**



**Watch Video Solution**

**66.** Which of the following damages gastric mucosa if taken along with alcohol?

A. Aspirin

B. Hashish

C. Valium

D. Barbiturate

**Answer: A**



**Watch Video Solution**

**67.** Study of interaction of antigen and antibody in blood is

A. serology

B. nephrology

C. angiology

D. haematology

**Answer: A**



**Watch Video Solution**

**68.** All of the following represent non-specific mechanisms of body defence except:

A. IgM

B. lysozyme

C. stomach acid

D. phagocytosis

**Answer: A**



**Watch Video Solution**



**69.** Neutrophils and monocytes are important cells participating in:

- A. phagocytosis
- B. perforin production
- C. passive immunity
- D. antibody production

**Answer: A**



**Watch Video Solution**

70. A person is injected with the globulin against hepatitis. This is

- A. naturally acquired active immunity
- B. naturally acquired passive immunity
- C. artificially acquired active immunity
- D. artificially acquired passive immunity

**Answer: D**



**Watch Video Solution**

71. Rejection of tissue or organ transplants is brought about mainly by:

- A. Suppressor T-cell
- B. B-cells
- C. Cytotoxic T-cells
- D. Memory T-cells

**Answer: C**



**Watch Video Solution**

72. Which cell of immune system cause pore formation at the surface of the plasma membrane

- A. B-cell
- B. Killer T-cell
- C. Helper T-cell
- D. Suppressor T-cell

**Answer: B**



**Watch Video Solution**

73. Memory cells are formed from:

A. monocytes

B. eosinophils

C. neutrophils

D. lymphocytes

**Answer: D**



**Watch Video Solution**

**74.** Among the organs of the body that are rich in mature T-cells and B-cells are:

A. Liver and gallbladder

B. Spleen and lymph nodes

C. Brain and spinal cord

D. Small and large intestine

**Answer: B**



**Watch Video Solution**

**75. Given:**

1. Kupffer cells , 2. T-lymphocytes

3. B-lymphocytes , 4. Megakaryocytes

Of the above tissue macrophages are:

A. 1 only

B. 1, 2 and 3 only

C. 1, 2, 3 and 4

D. 4 only

**Answer: A**



**Watch Video Solution**

**76.** Shape of antibody is like

A. A

B. P

C. O

D. Y

**Answer: D**



**Watch Video Solution**

**77.** Each immunoglobulin has two heavy chains & two light chains, the antigen binding site is present in

- A. variable region of light chain
- B. variable region of heavy chain
- C. variable region of both heavy and light chain
- D. constant region of both light and heavy chain



**Answer: C**



**Watch Video Solution**

**78.** The most important long acting antibody representing about 80% of the antibody that is able to pass across the placenta is:

A. IgD

B. IgG

C. IgM

D. IgA

**Answer: B**



**Watch Video Solution**

**79.** Immunoglobulin present in tears is:

A. IgG

B. IgE

C. IgA

D. IgM

**Answer: C**



**Watch Video Solution**

80. The type of immunoglobulin whose function is possible antigen recognition by B-cells may be:

A. IgA

B. IgD

C. IgE

D. IgG

**Answer: B**



**Watch Video Solution**

**81.** Recognition and digestion by phagocytosis due to coated surface of antibodies is:

- A. Opsonization
- B. Immunization
- C. T-cell immunization
- D. B-cell immunization

**Answer: A**



**Watch Video Solution**

**82.** The function of IgE is:

A. activation of B-cells

B. mediate in allergic response

C. present on lymphocytes surface as receptors

D. protection from inhaled and ingested pathogens

**Answer: B**



**Watch Video Solution**

**83.** column I lists the components of body defense and column II lists the corresponding descriptions.

Match the two columns. Choose the correct option

from those given

<b>Column I</b>		<b>Column II</b>	
A. Active natural immunity	p.	Injection of gamma globulins	
B. First line of defense	q.	Complement proteins and interferons	
C. Passive natural immunity	r.	Direct contact with the pathogens that have entered inside	
D. Second line of defense	s.	Surface barriers	
	t.	Antibodies transferred through the placenta	

A. A = s, B = r, C = t, D = q

B. A = r, B = s, C = q, D = t

C. A = r, B = s, C = t, D = q

D. A = t, B = r, C = q, D = p

**Answer: C**



**Watch Video Solution**

**84.** Immunity due to injection of diphtheria toxoid is an example of:

- A. naturally acquired active immunity
- B. naturally acquired passive immunity
- C. artificially acquired active immunity
- D. artificially acquired passive immunity

**Answer: C**



**Watch Video Solution**

**85.** Which of the following disease is due to an allergic reaction

A. Goitre

B. Skin cancer

C. Hay fever

D. Enteric fever

**Answer: C**



**Watch Video Solution**

**86.** Antihistamine pills are to nullify:



A. malaria

B. Typhoid

C. allergic reaction

D. autoimmune diseases

**Answer: C**



**Watch Video Solution**

**87.** When a person dies after stung by a bee followed by the administration of penicillin, death may be due to

A. prophylactic shock

B. anaphylactic shock

C. autoimmunity

D. sedation

**Answer: B**



**Watch Video Solution**

**88.** 'Histamines' the inflammation producing substances are produced by which cells of the body?

A. Mast cells

B. Collagen fibres

C. Macrophages

D. Sustentacular cells

**Answer: A**



**Watch Video Solution**

**89.** Edward Junner prepared the vaccine for smallpox virus by using:

A. attenuated cowpox virus

B. attenuated smallpox virus

C. large does of smallpox virus

D. small does of smallpox virus

**Answer: A**



**Watch Video Solution**

**90.** Which type of graft is used in plastic surgery?

A. Isograft

B. Allograft

C. Autograft

D. Xenograft

**Answer: C**



**Watch Video Solution**

**91.** Grafting of tissue or organ between individuals of different species is called

A. autograft

B. isograft

C. xenograft

D. allograft

**Answer: C**





[Watch Video Solution](#)

**92.** The rejection of organ transplanting in humans is prevented by using:

A. aspirin

B. thrombin

C. calcitonin

D. cyclosporine

**Answer: D**



[Watch Video Solution](#)

93. Which one of the following provide nonspecific pathogen defence for the body?

A. T-cells

B. B-cells

C. Phagocytes

D. Stem cells

**Answer: C**



**Watch Video Solution**

**94.** Which of the following provides immunity to digestive tract against antigen?

A. IgA

B. IgD

C. IgG

D. IgE

**Answer: A**



**Watch Video Solution**



**95.** How many variable segments are present in the basic structure of antibody molecules

A. One

B. Two

C. Four

D. Three

**Answer: C**



**Watch Video Solution**

96. How many polypeptide chains are present in gamma immunoglobulin

or

How many variable segments are present in the basic structure of antibody molecule

A. 6

B. 2

C. 7

D. 4

**Answer: D**



**Watch Video Solution**

97. Match the type of immunity listed in column I with the examples listed in column II. Choose the answer that gives the correct combination of alphabets of the two columns

Column I Types of immunity		Column II Example	
A.	Natural active	p.	Immunity developed by heredity
B.	Artificial passive	q.	From mother to foetus through placenta
C.	Artificial active	r.	Injection of antiserum to travellers
D.	Natural passive	s.	Fighting infections naturally
		t.	Induced by vaccination

A. A = p, B = q, C = r, D = t

B. A = s, B = r, C = t, D = q

C. A = s, B = t, C = q, D = r

D. A = t, B = s, C = r, D = p

**Answer: B**



**Watch Video Solution**

**98.** In the immune system, interferons are a part of

- A. macrophages
- B. cellular barriers
- C. physical barriers
- D. cytokine barriers

**Answer: D**



[Watch Video Solution](#)

99. Which of the following cells does not exhibit phagocytic activity ?

A. Monocyte

B. Basophil

C. neutrophils

D. Macrophage

**Answer: B**



[Watch Video Solution](#)

**100.** All the following are related to innate immunity except

- A. Anamnestic response
- B. Interferons
- C. PMNL - neutrophils
- D. Monocytes

**Answer: A**



**Watch Video Solution**

**101.** Thymic hypoplasia is a disease of infancy in which the child is deprived of a thymus. Which of the following is expected to occur in an infant with thymic hypoplasia?

- A. Onset of respiratory distress and breathing difficulties
- B. B-cells fail to mature and are not effective
- C. Cell-mediated immunity is weak or non-existent
- D. An increase in immunoglobulin (anti-body) levels

**Answer: C**



102. Go through the following matches

Organism	Disease caused	Group of the organism
(i) <i>Varicella zoster</i>	Mumps	Virus
(ii) <i>Balantidium coli</i>	Ciliary dysentery	Bacteria
(iii) <i>Shigella</i>	Diarrhoea	Bacteria
(iv) <i>Treponema pallidum</i>	Syphilis	Bacteria

Which of these are correct?

A. (ii) & (iii)

B. (ii),(iii) & (iv)



C. (i), (ii) & (iv)

D. (i), (iii) & (iv)

**Answer: B**



**Watch Video Solution**

**103.** Go through the following matches

<b>Drug</b>	<b>Group</b>	<b>Source</b>
(i) Cocaine	Tranquiliser	<i>Erythroxyton coca</i>
(ii) LSD	Hallucinogen	<i>Claviceps-purpure a</i>
(iii) Bhang	Hallucinogen	<i>Cannabis sativa</i>
(iv) Ampheta- mine	CNS stimulant	<i>Papaverso- miniferum</i>

Which of these are correct?

A. (iii) & (iv)

B. (i), (iii) & (iv)

C. (ii) and (iii)

D. All are correct

**Answer: C**



**Watch Video Solution**

**104.** Go through the following Statements

(i) Cocaine interferes with the transport of neurotransmitter dopamine

(ii) *Atropa belladonna* and *Datura* are used by criminals for stupefying, roadside robbery and kidnapping etc.

(iii) Nicotine stimulates adrenal gland to release adrenaline and nor-adrenaline into blood circulation, both of which raise blood pressure and increase heart rate.

(iv) Pethidine, commonly called smack is chemically diacetylmorphine which is obtained by acetylation of morphine .

Which of these are correct?

A. (i) & (iii)

B. (i), (iii) & (iv)

C. (i), (ii) & (iii)

D. All are correct

**Answer: C**



**Watch Video Solution**

**105.** Find the correct match

Disease	Pathogen	Main organ affected
(1) Typhoid	Bacteria	Liver
(2) Ringworm	Fungus	Skin
(3) Filariasis	Common Round worm	Lymphatic vessels
(4) Dysentery	Protozoa	Duodenum

A. 1

B. 2

C. 3

D. 4

**Answer: B**



**View Text Solution**

**106.** Find the correct statement

A. 'Smack' is derived from 'Cannabis sativa.'

B. Now AIDS is completely treatable with anti-retroviral drugs.

C. Bone marrow, thymus and lymph nodes are the primary lymphoid organs.

D. MALT constitutes about 50 percent of lymphoid tissue in human body

**Answer: D**



**Watch Video Solution**

**107.** Which of the following can prove to be a life saving drug in anaphylactic shock?

A. Zidovudine

B. Penicillin

C. Acetylcholine

D. Glucocorticoids

**Answer: D**



**Watch Video Solution**

**108.** There is oozing of semisolid material which forms a tough membrane over air passage .The disease is

A. whooping cough

B. diphtheria

C. pulmonary tuberculosis

D. measles

**Answer: B**



**Watch Video Solution**

**109.** Which structure is directly affected in typhoid fever?

A. Tongue

B. Stomach



C. Payer's Patches

D. Rectum

**Answer: C**



**View Text Solution**

**110.** Which of the following diseases can be controlled by antibiotics?

A. Polio

B. AIDS

C. Measles

D. Trachoma

**Answer: D**



**Watch Video Solution**

**111.** Choose the incorrectly matched pair

- A. B cells - Humoral immunity
- B. Cytokines - interferons
- C. Passive immunity - Long lasting
- D. Antibodies - immunoglobulins

**Answer: C**



Watch Video Solution

112. Select the wrong statement

A. Main side effects of anabolic steroids in females are masculinisation, excessive hair growth, enlargement of clitoris and deep voice while in males these include acne, reduction in size of testicles and breast enlargement.

B. With repeated use of drugs, the tolerance level of receptors present in our body increases and consequently receptors respond

only to higher doses of drugs leading to greater intake and addiction.

C. Tumor cells avoid detection and destruction by immune system and therefore patients are given biological response modifiers like some interferons which activate the immune system.

D. Atropabelladone and Datura have hallucinogenic properties and cause symptoms like excessive salivation, hot humid skin and constricted pupils

**Answer: D**

---



Watch Video Solution

113. Select the correct match

Common names of worm or disease	Scientific name of organism	Intermediate host/vector
(1) Guinea worm	<i>Dracunculus medinensis</i>	Cyclops
(2) Filarial worm	<i>Wuchereria bancrofti</i>	Absent

(3) African sleeping sickness	<i>Leishmaniadonovani</i>	Glossina
(4) Hookwork	<i>Ancylostomaduodenale</i>	palpalis Pig



Watch Video Solution

**114.** Injured cells release a substance for dilation of blood vessels and increase the permeability of their walls so that the healing materials can be transported to the site of wound. This substance is

- A. Histamine
- B. Dopamine
- C. Angiotensinogen
- D. Pyrogen

**Answer: A**



**Watch Video Solution**

115. Go through the following matches

Disease	Vector
(i) Chikungunya	- <i>Aedes</i>
(ii) Dengue fever	- <i>Aedes</i>
(iii) Trypanosoma	- <i>Glossinapalpalis</i>
(iv) Trachoma	- <i>Culex</i>
(v) Plague	- <i>Mansonia</i>

Which of these are correct ?

A. (i), (iii) & (iv)

B. (i), (ii) & (iii)

C. (ii), (iii) & (iv)

D. All are correct

**Answer: B**

 [Watch Video Solution](#)

**116.** The sporozoites that cause infection, when a female Anopheles mosquito bites a person, are formed in

- A. Liver of the person
- B. RBCs of mosquito
- C. salivary glands of mosquito
- D. intestine of mosquito

**Answer: D**

 [Watch Video Solution](#)



**117.** Many diseases can be diagnosed by observing the symptoms in the patient. Which group of symptoms are indicative of pneumonia ?

A. Difficulty in respiration, fever, chills, cough, headache

B. Constipation, abdominal pain, cramps, blood clots

C. Nasal congestion and discharge, cough, sorethroat, headache

D. High fever, weakness, stomach pain, loss of appetite and constipation

**Answer: A**



**Watch Video Solution**

**118.** In malignant tumors, the cells proliferate, grow rapidly and move to other parts of the body to form new tumors. This stage of disease is called.

A. metagenesis

B. metastasis

C. teratogenesis

D. mitosis

**Answer: B**



**Watch Video Solution**

**119.** Which of the following are the reason(s) for Rheumatoid arthritis? Choose the correct option.

(i) Lymphocytes becomes more active

(ii) Body attacks self cells

(iii) More antibodies are produced in the body

(iv) The ability to differentiate pathogens or foreign molecules from self cells is lost

A. (i) and (ii)

B. (ii) and (iv)

C. (iii) and (iv)

D. (i) and (iii)

**Answer: B**



**Watch Video Solution**

**120.** The substance produced by a cell in viral infection that can protect other cells from further infection is

A. serotonin

B. colostrum

C. interferon

D. histamine

**Answer: C**



**Watch Video Solution**

**121.** Transplantation of tissues/organs to save certain patients often fails due to rejection of such tissues/organs by the patient. Which type of immune response is responsible for such rejections?

- A. Auto - immune response
- B. Humoral immune response
- C. Physiological immune response
- D. Cell - mediated immune response

**Answer: D**



**Watch Video Solution**

**122.** Antibodies present in colostrum which protect the new born from certain diseases is of

- A. ig G type

B. IgA type

C. Ig D type

D. Ig E type

**Answer: B**



**Watch Video Solution**

**123.** Antivenom against snake poison contains

A. Antigens

B. Antigen-antibody complexes

C. Antibodies

## D. Enzymes

**Answer: C**



**Watch Video Solution**

**124.** Which of the following glands is large sized at birth but reduces in size with ageing ?

A. Pineal

B. Pituitary

C. Thymus

D. Thyroid



**Answer: C**



**Watch Video Solution**

**125.** Haemozoin is a

A. a precursor of haemoglobin

B. a toxin released from Streptococcus infected  
cells

C. a toxin released from Plasmodium infected  
cells

D. a toxin released from Haemophilus infected cells

**Answer: C**



**Watch Video Solution**

**126.** A person with sickle cell anaemia is

- A. More prone to malaria
- B. More prone to typhoid
- C. Less prone to malaria
- D. Less prone to typhoid

**Answer: C**



**Watch Video Solution**

**127.** Assertion (A): Many visitors to the hills suffer from skin and respiratory allergy problems.

Reason (R): Conifer trees produce a large quantity of wind-borne pollen grains.

A. If both Assertion and Reason are true and the Reason is the correct explanation of the Assertion, then mark a.

B. If both Assertion and Reason are true but the Reason is not the correct explanation of the Assertion, then mark b.

C. If Assertion is true statement but Reason is false, then mark c.

D. If both Assertion and Reason are false statements, then mark d.

**Answer: A**



**Watch Video Solution**

**128.** Assertion: Tapeworm, roundworm and pinworm are endoparasites of human intestine.

Reason: Improperly cooked food is the source of intestinal infections.

A. If both Assertion and Reason are true and the

Reason is the correct explanation of the

Assertion, then mark a.

B. If both Assertion and Reason are true but the

Reason is not the correct explanation of the

Assertion, then mark b.

C. If Assertion is true statement but Reason is false, then mark c.

D. If both Assertion and Reason are false statements, then mark d.

**Answer: B**



**Watch Video Solution**

**129.** Which institute is correct matched with its location ?

A. National Institute of Virology - Pune

B. National Institute of Communicable Disease -  
Lucknow

C. Central Drug Research Institute - Kasauli

D. National Institute of Nutrition - Mumbai

**Answer: A**



**Watch Video Solution**

**130.** A young drug addict used to show symptoms of depressed brain activity, feeling of calmness, relaxation and drowsiness. Possibly he was taking:

A. Amphetamine

B. Marijuana

C. Hashish

D. Valium

**Answer: D**



**Watch Video Solution**

**131.** Assertion (A): Organ transplantation patients are given immunosuppressive drugs.

Reason (R): Transplanted tissue has antigens which



stimulate the specific immune response of the recipient.

A. If both Assertion and Reason are true and the Reason is the correct explanation of the Assertion, then mark a.

B. If both Assertion and Reason are true but the Reason is not the correct explanation of the Assertion, then mark b.

C. If Assertion is true statement but Reason is false, then mark c.

D. If both Assertion and Reason are false statements, then mark d.

**Answer: A**



**Watch Video Solution**

**132.** Assertion (A): A person who has received a cut and is bleeding needs to be given antitetanus treatment.

Reason(R): Antitetanus injection provides immunity by producing antibodies for tetanus.

- A. If both Assertion and Reason are true and the Reason is the correct explanation of the Assertion, then mark a.
- B. If both Assertion and Reason are true but the Reason is not the correct explanation of the Assertion, then mark b.
- C. If Assertion is true statement but Reason is false, then mark c.
- D. If both Assertion and Reason are false statements, then mark d.

**Answer: A**

---



**133.** Assertion : LSD and marijuana are clinically used as analgesics.

Reason : Both these drugs suppress brain function.

- A. If both Assertion and Reason are true and the Reason is the correct explanation of the Assertion, then mark a.
- B. If both Assertion and Reason are true but the Reason is not the correct explanation of the Assertion, then mark b.

C. If Assertion is true statement but Reason is false, then mark c.

D. If both Assertion and Reason are false statements, then mark d.

**Answer: D**



**Watch Video Solution**

**134.** In DPT, T stands for

A. Tuberculosis

B. Tetanus

C. Trichomoniasis

D. Taeniasis

**Answer: B**



**Watch Video Solution**

135. Find out the wrong match

Disease	Causative agent	Mode of spread
(1) AIDS	Human Immuno deficiency virus	Sexual contact and contaminated blood
(2) Common cold	<i>Rhino</i> virus	Droplet infection
(3) Ascariasis	<i>Ascaris</i>	Bite of female mosquito vector
(4) Typhoid	<i>Salmonella typhi</i>	Food and contaminated water



Watch Video Solution

136. Cancer cells are more easily damaged by radiation than normal cells because they are:

- A. Different in structure
- B. Non-dividing
- C. Starved of mutation
- D. Undergoing rapid division

**Answer: D**



**Watch Video Solution**

**137. Antibodies in our body are complex**

- A. Lipoproteins
- B. Steroids



C. Prostaglandins

D. Glycoproteins

**Answer: D**



**Watch Video Solution**

**138.** If you suspect major deficiency of antibodies in a person, to which of the following would you look for confirmatory evidence

A. Serum globulins

B. Fibrinogen in the plasma

C. Haemocytes

D. Serum albumins

**Answer: A**



**Watch Video Solution**

**139.** Which type of white blood cells are concerned with the release of histamine and the natural anticoagulant heparin ?

A. Monocytes

B. Neutrophils

C. Basophils

D. Eosinophils

**Answer: C**



**Watch Video Solution**

**140.** Most active phagocytic white blood cells are

A. Neutrophils and monocytes

B. Neutrophils and eosinophils

C. Lymphocytes and macrophages

D. Eosinophils and lymphocytes

**Answer: C**



**Watch Video Solution**

**141.** To which type of barriers under innate immunity, do the saliva in the mouth and the tears the eyes, belong?

- A. Physical barriers
- B. Cytokine barriers
- C. Cellular barriers
- D. Physiological barriers

**Answer: D**



**Watch Video Solution**

**142.** Match column I with column II and select the correct option from codes given below.

Column I	Column II
Amoebiasis	(i) Treponema pallidum
Diphtheria	(ii) Houseflies as mechanical carriers
Cholera	(iii) DPT vaccine
Syphilis	(iv) Oral rehydration therapy

A. A - (ii), B - (iii), C - (iv), D - (i)

B. A - (i), B - (ii), C - (iii), D - (iv)

C. A - (ii), B - (iv), C - (i), D - (iii)

D. A - (ii), B - (i), C - (iii), D - (iv)

**Answer: A**



**Watch Video Solution**

**143.** Which one of the following is correct statement regarding the particular psychotropic drug specified?

A. Barbiturates cause relaxation and temporary euphoria

B. Hashish causes after thought perceptions and hallucinations

C. Opium stimulates nervous system and causes hallucinations

D. Morphine leads to delusions and disturbed emotions

**Answer: B**



**Watch Video Solution**

**144.** Cornea transplant in humans is almost never rejected. This is because

- A. It is a non-living layer
- B. Its cells are least penetrable by bacteria
- C. It has no blood supply
- D. It is composed of encucleated cells

**Answer: C**



**Watch Video Solution**

**145.** The letter "T" in T-lymphocyte refers to

- A. Tonsil
- B. Thymus



C. Thyroid

D. Thalamus

**Answer: B**



**Watch Video Solution**

**146.** Which of the following is a pair of viral diseases

A. Dysentery, Common Cold

B. Typhoid, Tuberculosis

C. Ringworm, AIDS

D. Common Cold, AIDS

**Answer: D**



**Watch Video Solution**

**147.** A person likely to develop tetanus is immunized by administering

or

When a quick immune response is required due to infection of a deadly microbes, the patient is injected

with

A. Wide spectrum antibiotics

B. Weakened germs

C. Dead germs

D. Preformed antibodies

**Answer: D**



**Watch Video Solution**

**148.** Which one of the following statements is correct ?

A. Heroin accelerates body functions.

B. Malignant tumours may exhibit metastasis

C. Patients who have undergone surgery are given cannabinoid to relieve pain.

D. Benign tumours show the property of metastasis.

**Answer: A**



**Watch Video Solution**

**149.** Globulins contained in human blood plasma are primarily involved in

A. Oxygen transport in the blood

B. Clotting of blood

C. Defence mechanisms of body

D. Osmotic balance of body fluids

**Answer: C**



**Watch Video Solution**

**150.** Use of antihistamines and steroid give a quick relief from

A. Cough

B. Headache

C. Allergy

D. Nausea

**Answer: C**



**Watch Video Solution**

**151.** Ringworm in humans is caused by:

A. Viruses

B. Bacteria

C. Fungi

D. Nematodes

**Answer: C**



**Watch Video Solution**

**152.** Which one of the following statements is correct with respect to AIDS?

- A. The causative HIV retrovirus enters helper T-lymphocytes thus reducing their numbers
- B. The HIV can be transmitted through eating food together with an infected person
- C. Drug addicts are least susceptible to HIV infection

D. AIDS patients are being fully cured cent per cent with proper care and nutrition

**Answer: A**



**Watch Video Solution**

**153.** Select the correct statement from the ones given below

A. Cocaine is given to patients after surgery as it stimulates recovery



B. Barbiturates when given to criminals make them tell the truth

C. Morphine is often given a persons who have undergone surgery as a pain killer

D. Chewing tobacco lowers blood pressure and heart rate

**Answer: C**



**Watch Video Solution**

**154.** At which stage of HIV infection does one usually show symptoms of AIDS

- A. When the infecting retrovirus enter host cells
- B. When viral DNA is produced by reverse transcriptase
- C. When HIV replicates rapidly in helper T-lymphocytes and damages large number of these
- D. Within 15 days of sexual contact with an infected person

**Answer: C**



**Watch Video Solution**

155. Which one of the following acts as a physiological barrier to the entry of microorganisms in human body

A. Epithelium of Urogenital tract

B. Tears

C. Monocytes

D. Skin

**Answer: B**



**Watch Video Solution**

**156.** A certain patient is suspected to be suffering from Acquired Immuno Deficiency Syndrome Which diagnostic technique will you recommend for its detection?

A. ELISA

B. MRI

C. Ultra sound

D. WIDAL

**Answer: A**



**Watch Video Solution**

**157.** Which one of the following is not a property of cancerous cells whereas the remaining three are

- A. They do not remain confined in the area of formation
- B. They divide in an uncontrolled manner
- C. They show contact inhibition
- D. They compete with normal cells for vital nutrients

**Answer: C**



**Watch Video Solution**

**158.** Common cold differs from pneumonia in, that

A. Pneumonia can be prevented by a live attenuated bacterial whereas the common cold has no effective vaccine.

B. Pneumonia is caused by a virus while the common cold is caused by the bacterium *Haemophilus influenzae*

C. Pneumonia pathogen infects alveoli whereas the common cold affects nose and respiratory passage but not the lungs

D. Pneumonia is a communicable disease whereas the common cold is a nutritional deficiency disease

**Answer: C**



**Watch Video Solution**

**159.** In which one of the following options the two examples are correctly matched with their particular

type of immunity?

Examples	Type of immunity
(1) Anti-tetanus and anti-snake bite injections	Active immunity
(2) Saliva in mouth and Tears in eyes	Physical barriers
(3) Mucus coating of epithelium lining the urinogenital tract and the HCl in stomach	Physiological barriers
(4) Polymorphonuclear leukocytes and monocytes	Cellular barriers



[Watch Video Solution](#)



**160.** Cirrhosis of liver is caused by the chronic in-take of

A. Alcohol

B. Tobacco (Chewing)

C. Cocaine

D. Opium

**Answer: A**



**Watch Video Solution**

**161.** The pathogen *Microsporium* responsible for ringworm disease in humans belongs to the same Kingdom of organisms as that of

- A. *Taenia*, a tapeworm
- B. *Wuchereria*, a filarial worm
- C. *Rhizopus*, a mould
- D. *Ascaris*, a round worm

**Answer: C**



**Watch Video Solution**

**162.** Which one of the following option gives the correct matching of a disease with its causative organism and mode of infection



**Watch Video Solution**

**163.** Common cold is not cured by antibiotics because it is

- A. Caused by a virus
- B. Caused by a Gram-positive bacterium
- C. Caused by a Gram-negative bacterium
- D. Not an infectious disease

**Answer: A**



**Watch Video Solution**

**164.** Select the correct statement with respect to diseases and immunisation

A. If due to some reason B-and T-lymphocytes are damaged, the body will not produce antibodies against a pathogen.

B. Injection of dead/inactivated pathogens causes passive immunity

C. Certain protozoans have been used to mass produce hepatitis B vaccine

D. Injection of snake antivenom against snake bite is an example of active immunisation

**Answer: A**



**Watch Video Solution**

**165.** Read the following four statements (A-D)

(a) Colostrum is recommended for the new born because it is rich in antigens

(b) Chikengunya is caused by a Gram negative

bacterium

(c) Tissue culture has proved useful in obtaining virus-free plants

(d) Beer is manufactured by distillation of fermented grape juice

How many of the above Statements are wrong

A. Four

B. One

C. Two

D. Three

**Answer: D**



**Watch Video Solution**

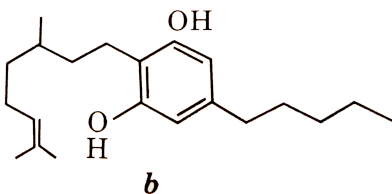
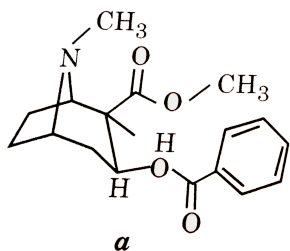
**166.** Which one of the following statements is correct with respect of immunity ?

- A. Antibodies are protein molecules, each of which has four light chains
- B. Rejection of a kidney graft is, the function of B-lymphocytes
- C. Preformed antibodies need to be injected to treat the bite by a viper snake
- D. The antibodies against small pox pathogen are produced by T-lymphocytes

Answer: C

 Watch Video Solution

167. Identify and select the right option giving source and use



 Watch Video Solution

168. What is not true about innate immunity?



A. First line of defence

B. Includes all defence elements with which an individual is born

C. Lysozyme and interferons are part of it

D. Specific in nature

**Answer: D**



**Watch Video Solution**

**169.** Which of the following relaxes muscles and relieves anxiety?

A. Hallucinogens

B. Tranquiliser

C. Stimulants

D. Opiates

**Answer: B**



**Watch Video Solution**

**170.** What is 'pap smear'?

A. Screening test for detection of cervix cancer

- B. Diagnostic test for detection of Human papilloma virus from cervix and vagina
- C. Testing blood smear from cervix
- D. Screen test for detection of breast cancer

**Answer: A**



**Watch Video Solution**

**171. Which organism causes Pertussis?**

- A. Bordetella
- B. Corynebacterium

C. Mycobacterium

D. Clostridium

**Answer: A**



**Watch Video Solution**

**172. Find the mismatch**

A. Sleeping sickness - Trypanosoma

B. Syphilis - Trichuris

C. Typhoid - Salmonella

D. Kala azar - Leishmania

**Answer: B**



**Watch Video Solution**

**173.** The maturation and development of T-lymphocytes takes place in

A. Thymus

B. Spleen

C. Lymph nodes

D. MALT constitutes about 50 percent of lymphoid tissue in human body

**Answer: A**



**Watch Video Solution**

**174.** The antibodies in the blood are secreted by

- A. Neutrophils
- B. Basophils
- C. Monocytes
- D. Lymphocytes

**Answer: D**



**Watch Video Solution**

175. The most common organ involved in extraintestinal amoebiasis is

A. Liver

B. Lungs

C. Brain

D. Spleen

**Answer: A**



**Watch Video Solution**

**176.** Interferons have been used in the treatment of

A. Ascariasis

B. Influenza

C. Filariasis

D. Giardiasis

**Answer: B**



**Watch Video Solution**

**177.** The term humor in humoral immunity implies



A. Hormones

B. Bone marrow

C. Plasma and lymph

D. Cerebrospinal fluid

**Answer: C**



**Watch Video Solution**

**178.** Interferons are

A. Protein products of macrophages which  
destroy microbes

B. Proteins secreted by virus infected cells which protect non-infected cells from further viral infection

C. Allergens

D. Antibodies molecules

**Answer: B**



**Watch Video Solution**

**179.** Which of the following properties of acquired immunity is the basis of vaccination?

A. Specificity

B. Diversity

C. Memory

D. Discrimination between Self and Non-self

**Answer: C**



**Watch Video Solution**

**180.** Which one is not included in the category of physiological barriers to prevent microbial growth?

A. Acid in the Stomach

B. Saliva in the Mouth

C. Tears from Eyes

D. Virus-infected cells secrete Interferons

**Answer: D**



**Watch Video Solution**

**181.** Polio is caused by

A. Bacteriophage

B. Virus with a single strand RNA

C. Virus with a single strand DNA

D. Virus with double strand DNA

**Answer: B**



**Watch Video Solution**

**182.** Which one of the following pairs of diseases is viral as well as transmitted by mosquitoes ?

- A. Elephantiasis and Dengue
- B. Yellow fever and sleeping sickness
- C. Encephalitis and sleeping sickness
- D. Yellow fever and Dengue

**Answer: D**



**Watch Video Solution**

**183.** Which Ig is produced in primary immune response

or

Which antibody is first to be released into blood following an infection

A. IgA

B. IgE

C. IgG

D. IgM

**Answer: D**



**Watch Video Solution**

**184.** Magic bullets are the:

- A. recombinant vaccines
- B. monoclonal antibodies
- C. chemotherapy drugs for cancer
- D. anabolic steroids

**Answer: B**



[Watch Video Solution](#)

**185.** If the person shows the production of interferons in his body, changes are that he is suffering from

A. anthrax

B. Malaria

C. measles

D. tetanus

**Answer: C**



[Watch Video Solution](#)



**186.** Globulins contained in human blood plasma are primarily involved in

- A. defence mechanisms of body
- B. osmotic balance of body fluids
- C. oxygen transport in the blood
- D. clotting of blood

**Answer: A**



**Watch Video Solution**

**187.** Match column I with column II and choose the

correct answer:

Column-I

*A* Neoplasm

*B* Benign tumour

*C* Carcinomas

*D* Sarcomas

*E* Lymphomas

Column-II

1. Haematopoietic cell tumours

2. Bone, cartilage tissue cancers

3. Malignant tumour

4. Cancer of epithelial tissues

5. Non-cancerous tumour

6. Initiation of new tumours

A. *A B C D E*  
3 5 4 2 1

B. *A B C D E*  
3 5 4 1 2

C. *A B C D E*  
5 3 4 2 1

D. *A B C D E*  
5 4 3 2 1

**Answer: A**

 [Watch Video Solution](#)

**188.** Which of the following statements is false ?

- A. TMV has a double-stranded RNA molecule
- B. Most plant viruses are RNA viruses
- C. The bacteriophage has a double-stranded DNA molecule
- D. Most animal viruses are DNA viruses

**Answer: A**

 [Watch Video Solution](#)

**189.** *Aedes aegypti* is a vector for:

A. both dengue and yellow fever

B. dengue fever

C. yellow fever

D. Japanese encephalitis

**Answer: A**



**Watch Video Solution**

**190.** 'Athlete's foot' disease is caused by

A. Tinea pedis

B. Tinea capitis

C. Candida albicans

D. Rickettsia

**Answer: A**



**Watch Video Solution**

**191.** Which one of the following groups includes are sexually transmitted diseases

A. AIDS, syphilis, cholera

B. HIV, malaria, trichomoniasis

C. Gonorrhoea, hepatitis-B, chlamydia

D. Hepatitis-B, haemophilia, AIDS

**Answer: C**



**Watch Video Solution**

**192.** Infection of Ascaris usually occurs by :

A. Tse-tsefly

B. mosquito bite

C. drinking water containing eggs of Ascaris.

D. eating imperfectly cooked pork

**Answer: C**



**Watch Video Solution**

**193.** The cell-mediated immunity inside the human body is carried out by

A. Thrombocytes

B. Erythrocytes

C. T-lymphocytes

D. B-lymphocytes

**Answer: C**



**Watch Video Solution**

**194.** Which is particular type of drug that is obtained from the plant





A. Pain-killer

B. Hallucinogen

C. depressant

D. Stimulant

**Answer: B**



**Watch Video Solution**

**195.** At which stage of HIV infection does one usually show symptoms of AIDS

A. When the viral DNA is produced by transcriptase

B. Within 15 days of sexual contact with an infected retro virus enters host cells

C. When the infected retro virus enters host cells

D. When HIV damages large number of helper T-lymphocytes

**Answer: D**



**Watch Video Solution**

**196.** Which of the following endoparasites of humans does show viviparity

A. *Enterobius vermicularis*

B. *Trichinella spiralis*

C. *Ascaris lumbricoides*

D. *Ancylostoma duodenale*

**Answer: B**



**Watch Video Solution**

**197.** Which of the following is not a sexually transmitted disease ?

A. Acquired Immuno Deficiency Syndrome (AIDS)

B. Trichomoniasis

C. Encephalitis

D. Syphilis

**Answer: C**



**Watch Video Solution**

**198.** HIV that causes, AIDS first starts destroying

- A. Leucocytes
- B. Helper T-Lymphocytes
- C. Thrombocytes
- D. B-Lymphocytes

**Answer: B**



**Watch Video Solution**

**199.** The active form of *Entamoeba-histolytica* feeds upon

- A. mucosa and submucosa of colon
- B. food in intestine
- C. blood only
- D. erythrocytes, mucosa and submucosa of colon

**Answer: D**



**Watch Video Solution**

200. Which of the following viruses is not transferred through semen of an infected male

- A. Human immunodeficiency virus
- B. Chikungunya virus
- C. Ebola virus
- D. Hepatitis B virus

**Answer: B**



**Watch Video Solution**

**201.** Match the disease with its correct type of vaccine

- |                    |                        |
|--------------------|------------------------|
| (A) tuberculosis   | (i) harmless virus     |
| (B) whooping cough | (ii) inactivated toxin |
| (C) diphtheria     | (iii) Killed bacteria  |
| (D) polio          | (iv) harmless bacteria |

A.    *A*    *B*    *C*    *D*  
(iii) (ii) (iv) (i)

B.    *A*    *B*    *C*    *D*  
(iv) (iii) (ii) (i)

C.    *A*    *B*    *C*    *D*  
(i) (ii) (iv) (iii)

D.    *A*    *B*    *C*    *D*  
(ii) (i) (iii) (iv)

**Answer: 2**



**Watch Video Solution**



**202.** Which of the following immunoglobulins does constitute the largest percentage in human milk ?

A. Ig D

B. Ig M

C. Ig A

D. Ig G

**Answer: C**



**Watch Video Solution**

**203.** Grafted kidney may rejected in a patient due to

- A. Humoral immune response
- B. Cell-mediated immune response
- C. Passive immune response
- D. Innate immune response

**Answer: B**



**Watch Video Solution**

**204.** Which of the following diseases is caused by a protozoan

- A. Syphilis

B. influenza

C. Babesiosis

D. Blastomycosis

**Answer: C**



**Watch Video Solution**

**205.** In higher vertebrates, the immune system can distinguish self-cells and non-self. If this property is lost due to genetic abnormality and it attacks self-cells, then it leads to

A. Graft rejection

B. Auto-immune diseases

C. Active immunity

D. Allergic response

**Answer: B**



**Watch Video Solution**

**206.** Antivenom injection contains preformed antibodies while polio drops that are administered into the body contain

A. Harvested antibodies

B. Gamma globulin

C. Attenuated pathogens

D. Activated pathogens

**Answer: C**



**Watch Video Solution**

**207.** Asthma may be attributed to

A. Allergic reaction of the mast cells in the lungs

B. Inflammation of the trachea

C. Accumulation of fluid in the lungs

D. Bacterial infection of the lungs

**Answer: A**



**Watch Video Solution**

**208.** Which of the following sets of disease is caused by bacteria

- A. Cholera and tetanus
- B. Typhoid and smallpox
- C. Tetanus and mumps
- D. Herpes and influenza

**Answer: A**



**Watch Video Solution**

**209.** Which of the following is correct regarding AIDS causative agent HIV

A. HIV is enveloped virus containing one molecules of single-stranded RNA and one molecule of reverse transcriptase.

B. HIV is enveloped virus that contains two identical molecule of single stranded RNA and two molecules of reverse transcriptase.

C. HIV is unenveloped tetrovirus

D. HIV does not escape but attacks the acquired immune response.

**Answer: B**



**Watch Video Solution**

**210.** MALT constitutes about \_\_\_\_\_ percent of the lymphoid tissue in human body

A. 50 %

B. 20 %



C. 70 %

D. 10 %

**Answer: A**



**Watch Video Solution**

**211.** Transplantation of tissues/organs to save certain patients often fails due to rejection of such tissues/organs by the patient. Which type of immune response is responsible for such rejections?

A. Autoimmune response

B. Cell-mediated immune response

C. Hormonal immune response

D. Physiological immune response

**Answer: B**



**Watch Video Solution**

**212.** Which of the following is an autoimmune disease?

A. Vitiligo

B. Alzheimer's disease

C. Rheumatoid arthritis

D. Psoriasis

**Answer: B**



**Watch Video Solution**

**213.** Which part of poppy plant is used to obtain the drug 'Smack'?

A. Leaves

B. Roots

C. Latex

D. Flowers

**Answer: C**



**Watch Video Solution**