



BIOLOGY

BOOKS - TRUEMAN BOOK COMPANY

BIOLOGY (HINGLISH)

NEET - 2013 (HUMAN SYSTEMS)

Mcqs

1. Which of the following statements is correct in relation to the endocrine system.

A. Non-nutrient chemicals produced by the body in trace amount that act as intercellular messenger are known as hormones.

B. Releasing and inhibitory hormones are produced by the pituitary gland.

C. Adenohypophysis is under direct neural regulation of the hypothalamus.

D. Organs in the body like gastrointestinal tract, heart, kidney and liver do not

produce any hormone

Answer: 1



Watch Video Solution

2. What is the correct sequence of sperm formation?

A. Spermatogonia, spermatozoa, spermatocyte, spermatid

B. Spermatogonia, spermatocyte, spermatid, spermatozoa

C. Spermatid, spermatocyte, spermatogonia. spermatozoa

D. Spermatogonia, spermatocyte, spermatozoa, spermatid

Answer: 2



Watch Video Solution

3. Artificial insemination means

A. artificial introduction of sperms of a healthy donor into the vagina

B. introduction of sperms of a healthy donor directly into the ovary

C. transfer of sperms of a healthy donor to a test tube containing ova

D. transfer of sperms of husband to a test tube containing ova

Answer: A



Watch Video Solution

4. Which one of the following is not the function of placenta?

- A. Facilitates removal of carbon dioxide and waste material from embryo.
- B. Secretes oxytocin during parturition.

C. Facilitates supply of oxygen and nutrients to embryo.

D. Secretes estrogen

Answer: B



Watch Video Solution

5. Select the correct statement with respect to locomotion in humans

A. The vertebral column has 10 thoracic vertebrae

B. The joint between adjacent vertebrae is a fibrous joint

C. A decreased level of progesterone causes osteoporosis in old people.

D. Accumulation of uric acid crystals in joints causes their inflammation.

Answer: D



Watch Video Solution

6. Which of the following cannot be detected in a developing foetus by amniocentesis?

- A. Down syndrome
- B. Jaundice
- C. Klinefelter syndrome
- D. Sex of the foetus

Answer: B



Watch Video Solution

7. The most abundant intracellular cation is

A. H^+

B. K^+

C. Na^+

D. Ca^+

Answer: B



Watch Video Solution

8. If two persons with 'AB' blood group marry and have sufficiently large number of children, these children could be classified as 'A' blood group : 'AB' blood group : 'B' blood group in 1 : 2 : 1 ratio. Modern technique of protein electrophoresis reveals presence of both 'A' and 'B' type proteins in 'AB' blood group individuals. This is an example of

- A. Partial dominance
- B. Complete dominance
- C. Codominance

D. Incomplete dominance

Answer: 3



Watch Video Solution

9. One of the legal methods of birth control is

A. by having coitus at the time of day break

B. by a premature ejaculation during coitus

C. abortion by taking an appropriate
medicine

D. by abstaining from coitus from day 10 to
17 of the menstrual cycle

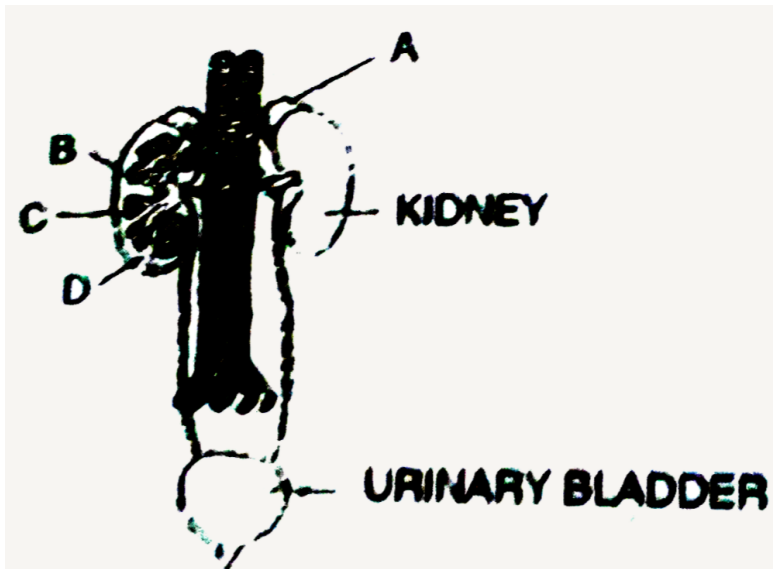
Answer: 4



Watch Video Solution

10. Figure shows human urinary system with structures labelled A to D. Select option which correctly identifies them and gives their

characteristics and/or functions



A. C- Medulla - inner zone of kidney and contains complete nephrons

B. D-Cortex-outer part of kidney and do not contain any part of nephrons.

C. A - Adrenal gland -located at the anterior part of kidney. Secrete Cat- echolamines which stimulate glyco- gen breakdown

D. B-Pelvis-broad funnel shaped space inner to hilum, directly connected to loops of Henle.

Answer: 3



View Text Solution

11. The H-zone in the skeletal muscle fibre is due to

A. The central gap between actin filaments extending through myosin filaments in the A-band

B. Extension of myosin filaments in the central portion of the A-band.

C. The absence of myofibrils in the central portion of A-band

D. The central gap between myosin filaments in the A-band.

Answer: A



Watch Video Solution

12. Product of sexual reproduction generally generates

A. New genetic combination leading to variation

B. Large biomass

C. Longer viability of seeds

D. Prolonged dormancy

Answer: 1



Watch Video Solution

13. Menstrual flow occurs due to lack of

A. Oxytocin

B. Vasopressin

C. Progesterone

D. FSH

Answer: C



Watch Video Solution

14. The diagram given here is the standard ECG of a normal person. The P-wave represents the



A. Beginning of the systole

B. End of systole

C. Contraction of both the atria

D. Initiation of the ventricular contraction

Answer: 3



View Text Solution