



BIOLOGY

NEET & AIIMS

Mock test 31

Example

1. Substitution of a purine base with a pyrimidine base or vice versa is called

A. Transition

B. Transversion

C. Deletion

D. Addition

Answer: B



Watch Video Solution

2. Mutation that occurs due to addition of a part of chromosome so that gene(s) is/are represented twice, is called

A. Addition

B. Insertion

C. Duplication

D. Transition

Answer: C



Watch Video Solution

3. In case of chronic myelogenous leukemia, which one of the following is called "Philadelphia chromosome"?

A. Chromosome 22

B. Chromosome 21

C. Chromosome 9

D. Chromosome 5

Answer: A



Watch Video Solution

4. In paracentric inversion

A. Centrosome is involved

B. Centrosome is splitted into two halves

C. Inverted segment does not carry
centromere

D.

Answer: C



Watch Video Solution

5. Select correct option w.r.t. trisomy
aneuploidy

- A. Down's syndrome
- B. Klinefeller's syndrome
- C. turner's syndrome
- D. All except (3)

Answer: D



Watch Video Solution

6. Who is considered as "father of actinobiology"?

A. H.J. Muller

B. C. Auerbach

C. T.H. Morgan

D. G.J. Mendel

Answer: A



Watch Video Solution

7. Gibberish mutation is caused by

A. Xanthine

B. Hypoxanthine

C. Acridines

D. Base analogous

Answer: B



Watch Video Solution

8. Select the incorrect state w.r.t. mutagens (a) 5 methyl cytosine and 5 hydroxymethyl cytosine are natural base analogues (b) 5-bromouracil is a structural analogue of

thymine © 2-aminopurine is an artificial base analogue of guanine (d) Nitrous acid deaminates adenine to hypoxanthine which is complementary to thymine. (e) Guanine is converted to xanthine by Nitrous acid which pairs with cytosine

A. (b), (d), & (e)

B. © & (d)

C. (a), (d), & (e)

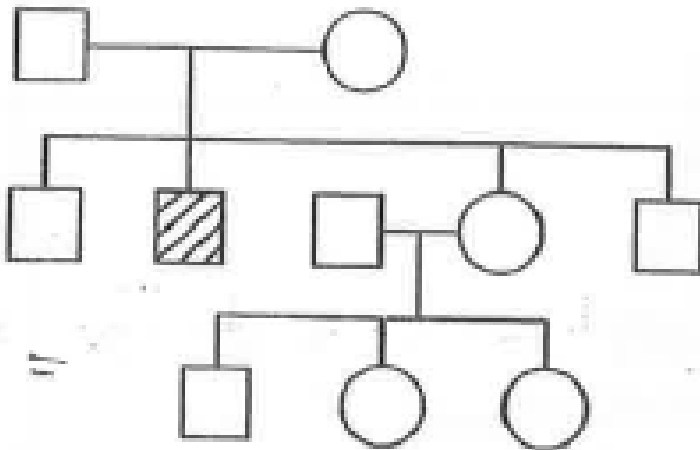
D. all except (e)

Answer: B



[View Text Solution](#)

9. Study the given chart and select the correct option w.r.t. genetic disorders.



A. Autosomal recessive

B. Autosomal dominant

C. Autosomal dominant

D. Holandric gene

Answer: A

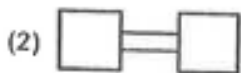


Watch Video Solution

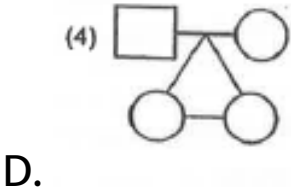
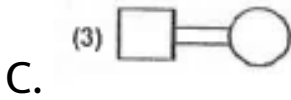
10. Consanguineous mating is denoted by



A.



B.



Answer: C

 [Watch Video Solution](#)

11. Which of the following techniques cannot be used to determine the genetic defect of an embryo?

A. Ultrasound

B. CVS

C. PUBS

D. Amniocentesis

Answer: A



Watch Video Solution

12. Which of the following cannot be regarded as characteristic of ideal contraceptive?

A. User friendly

B. No side effect

C. irreversible

D. Effective against pregnancy

Answer: C



Watch Video Solution

13. From the following contraceptive methods.

How many methods prevent the spread of

Femshield, Condom, Cyclofem, Lippes loop
Saheli, Norplant, LNG-20

STDs?

A. 1

B. 4

C. 2

D. 8

Answer: C



Watch Video Solution

14. Which of the following contraceptive method has least failure rate?

A. Barrier method

B. Implanted contraceptive

C. Oral contraceptive

D. IUDs

Answer: B



Watch Video Solution

15. Which of the following is correct match?

A. Tubectomy Inhibits gametogenesis

B. Cu-7 Prevents ovulation

C. POP Inhibits LH production

D. Saheli Inhibits FSH production

Answer: C



Watch Video Solution

16. Which of the following contraceptive contains synthetic progesterone only and is placed subdermally?

A. Saheli

B. Cyclofem

C. Mala D

D. Implanon

Answer: D



Watch Video Solution

17. MTP is comparatively safe upto _____ of pregnancy. Select the option which fills the blank correctly.

A. 12 weeks

B. 20 weeks

C. 30 weeks

D. 22 weeks

Answer: A



Watch Video Solution

18. Which of the following contains an anti-progesterone preparation and used as emergency contraception?

A. Mifepristone

B. Triquilar

C. LNG-20

D. Cyclofem

Answer: A



Watch Video Solution

19. Which of the following is a correct statement w.r.t. contraceptive methods?

A. In conventional vasectomy, usually transabdominal surgery is done, in which fallopian tube is cut and cut ends are tied

B. Tubectomy inhibits fertilisation by blocking formation of ova in ovary

C. In coitus interruptus, couples avoid from coitus from day 10 to 17 of the menstrual cycle

D. Surgical intervention blocks gamete transport and thereby prevents conception

Answer: D



Watch Video Solution

20. Which of the following contraceptives do not alter any hormone level in our body?

A. Mala D

B. POP

C. Norplant

D. Multiload-375

Answer: D



Watch Video Solution

21. Match the column I with column II

11. Match the column I with column II

Column I	Column II
a. Diaphragm	(i) Multiphasic oral pill
b. Triquilar	(ii) Injectable contraceptive
c. Mala L	(iii) Barrier method
d. Mesigna	(iv) Monophasic oral pill

Choose

the correct option.

A. a(iv), b(iii), c(i), d(ii)

B. a(iv), b(i), c(iii), d(ii)

C. a(iii), b(i), c(iv), d(ii)

D. a(ii), b(i), c(iv), d(iii)

Answer: C



Watch Video Solution

22. Which of the following is correct?

A. Mala D is taken once in a week from the beginning

B. Saheli is taken once in a week from the beginning

C. Vault caps are disposable devices inserted into female reproductive tract to cover cervix

D. Surgical methods are highly effective but their reversibility is very poor

Answer: D



[View Text Solution](#)

23. Consider the following methods. a) Vacuum aspiration b) Tubectomy c) Infusion of Saline solution d) Depo-provera injection e) RISUG f) Intake of RU-486 which of the above methods can be used to perform induce abortion?

A. a,e and c

B. b,d and e

C. a, c and f

D. e,c and f

Answer: C



Watch Video Solution

24. Which of the following STD is/ are completely curable if detected early and treated properly? a) Hepatitis-B b) Genital

Herpes c) HIV d) Chlamydia e) Gonorrhoea f)

Syphilis

A. only (d)

B. (a), (b) and (d) only

C. (d), (e) and (f) only

D. (a), (b), (c), (d), (e) & (f)

Answer: C



Watch Video Solution

25. Choose the incorrect statement w.r.t. Chlamydiasis.

A. It is a viral disease

B. Pathogen cannot reproduce outside the body cell

C. It can cause sterility in both male and female

D. It can be treated with tetracycline

Answer: A



26. Clap

A. Is a STD

B. Caused by virus *Neisseria gonorrhoeae*

C. Currently ceftriaxone is the antibiotic

that most effectively attacks the

pathogen of this disease

D. Both (1) and (3)

Answer: D



Watch Video Solution

27. Painless open sore called chancre is the characteristic feature of

A. Genital herpes

B. Chancroid

C. Genital wart

D. Syphilis

Answer: D



Watch Video Solution

28. Choose the incorrect match . Column I
(disease) Column II (pathogen)

A. Genital Herpes- HSV-2

B. Genital warts - HPV

C. Trichomoniasis- Non flagellated
protozoan

D. Syphilis-Treponema

Answer: C



Watch Video Solution

29. In ZIFT

- A. Fertilisation take place outside the body
- B. Embryo upto 8 blastomeres is usually transferred into uterus

C. Embryo less than 8 blastomeres is usually transferred into uterus

D. Both (1) and (2)

Answer: D



Watch Video Solution

30. Artificial insemination is used when

A. Fallopian tube is blocked in female

B. Penis erection dysfunction of male

C. Female does not produce mature ovum

D. All of these

Answer: B



Watch Video Solution