



## BIOLOGY

### NEET & AIIMS

# STRUCTURAL ORGANISATION IN ANIMALS ( ANIMAL TISSUES )

#### Example

1. List four types of animal tissues.

 [Watch Video Solution](#)

2. What is basement membrane ?

 [Watch Video Solution](#)

3. Squamous epithelium is also called

- A. germinal epithelium
- B. columnar epithelium
- C. pavement epithelium
- D. sensory epithelium

**Answer: C**

 [Watch Video Solution](#)

4. What is the significance of microvilli ?

 [Watch Video Solution](#)

5. What are goblet cells ?

 [Watch Video Solution](#)

6. Give two examples of exocrine glands



[Watch Video Solution](#)

7. Define compound epithelium



[Watch Video Solution](#)

8. Name any two cells which occur in the matrix of areolar connective tissue



[Watch Video Solution](#)

9. Which connective tissue links skeletal muscle to bone ?



[Watch Video Solution](#)

10. Cartilage-forming cells are known as \_\_\_\_



[Watch Video Solution](#)

11. Osteocytes are \_\_\_\_\_ cells



[Watch Video Solution](#)

12. What are myofibrils?



[Watch Video Solution](#)

13. State the location of smooth muscle



[Watch Video Solution](#)

14. Which uninucleate muscle fibres are found in urinary bladder?

 [Watch Video Solution](#)

15. List two muscular tissues that are involuntary

 [Watch Video Solution](#)

16. What is the special feature of a neuron?

 [Watch Video Solution](#)

17. Name the packing cells present in the brain and spinal cord which support the neurons?

 [Watch Video Solution](#)

1. The cells of epithelial tissue are \_\_\_packed with \_\_\_intercellular matrix.

 [Watch Video Solution](#)

2. The epithelial tissue rests upon a non-cellular \_\_\_\_\_.

 [Watch Video Solution](#)

3. State any two locations of squamous epithelium

 [Watch Video Solution](#)

4. State the fuction of cuboidal epithelium

 [Watch Video Solution](#)

5. What are microvilli?



[Watch Video Solution](#)

6. What is the function of brush-bordered cuboidal epithelium in PCT of nephron?



[Watch Video Solution](#)

7. State the role of ciliated columnar epithelium in the oviducts



[Watch Video Solution](#)

8. Give the location of columnar epithelium



[Watch Video Solution](#)

9. What is mucosa ?

 [Watch Video Solution](#)

10. Which epithelium lines the trachea and bronchi?

 [Watch Video Solution](#)

11. List any two areas where compound epithelium is present in our body

 [Watch Video Solution](#)

12. How do endocrine glands release their products?

 [Watch Video Solution](#)



**13.** What are unicellular glands?



**Watch Video Solution**

**14.** Give two example of multicellular glands



**Watch Video Solution**

**15.** What is the nature of white collagen fibres?



**Watch Video Solution**

**16.** Which connective tissue prevents heat loss from the body and helps in maintaining body temperature ?



**Watch Video Solution**

**17.** What are ligaments?



**Watch Video Solution**

**18.** Name the protein fibres which occur in tendons



**Watch Video Solution**

**19.** State true or false:

The matrix of bone is present in the form of layers called lacunae



**Watch Video Solution**

**20.** Name the fatty tissue that occurs in the cavity of limb bones



**Watch Video Solution**

21. What is the significance of bone marrow?



[Watch Video Solution](#)

22. Name two salts present in the matrix of bone



[Watch Video Solution](#)

23. Why skeletal muscles are known as striped muscles?



[Watch Video Solution](#)

24. Name the muscular tissue that is multinucleated



[Watch Video Solution](#)

25. Mention the shape of smooth muscle fibre





[Watch Video Solution](#)

26. Why smooth muscles are called unstriped muscles?



[Watch Video Solution](#)

27. What is the role of intercalated discs?



[Watch Video Solution](#)

28. Which muscles never get fatigued ?



[Watch Video Solution](#)

29. What are the parts of a neuron?



[Watch Video Solution](#)

**30.** What is synapse?



**Watch Video Solution**

**31.** Which part of a neuron carries impulses towards the cell body ?



**Watch Video Solution**

**32.** What are nissl's granules?



**Watch Video Solution**

**33.** Give the location of adipose tissue



**Watch Video Solution**

34. How many nuclei are present in cardiac muscle fibres?



[Watch Video Solution](#)

## Exercise

1. Endothelium lining a blood vessel is formed of

- A. Ciliated epithelium
- B. columnar epithelium
- C. cuboidal epithelium
- D. simple squamous epithelium

**Answer: D**



[Watch Video Solution](#)

2. Cells of squamous epithelium are

- A. columnar
- B. all with elongated nuclei
- C. flat plate like
- D. cube like

**Answer: C**



[Watch Video Solution](#)

3. Goblet cells are

- A. unicellular glands
- B. multicellular glands
- C. dead keratinised cells
- D. stratified epithelium

**Answer: A**



**Watch Video Solution**

**4. Simple epithelium is made of**

- A. Non-cellular layer of hyaluronic acid
- B. Actively dividing cells
- C. Loosely arranged cells
- D. Compactly packed single layer of cells

**Answer: D**



**Watch Video Solution**

**5. Compound squamous epithelium occurs in**

- A. Stomach



B. Intestine

C. Trachea

D. Pharynx

**Answer: D**

 [Watch Video Solution](#)

**6. The epithelium found in the lining layer of stomach and intestine is**

A. Columnar

B. Squamous

C. cuboidal

D. Ciliatedepithelium

**Answer: A**

 [Watch Video Solution](#)

7. Ciliated epithelium occurs in

- A. Trachea and lungs
- B. Trachea and liver
- C. Bronchioles and fallopian tubes
- D. Bronchioles and lungs

**Answer: C**



[Watch Video Solution](#)

8. Microvilli of epithelium cells

- A. Increase the surface area
- B. protect the cells
- C. Engulfs the foreign matter
- D. Give movement of cells

**Answer: A**



**Watch Video Solution**

9. Which of the following junctions help to stop substances from leaking across a tissue?

A. Adhering junctions

B. Gap junctions

C. Tight junctions

D. Both (1) & (2)

**Answer: C**



**Watch Video Solution**

10. Which of the following gland do not have duct?

- A. Salivary gland
- B. Mammary gland
- C. Intestinal gland
- D. Adrenal gland

**Answer: D**



[Watch Video Solution](#)

**11. Ligament connects**

- A. Muscle to skin
- B. Bone to bone
- C. Muscle to muscle
- D. Muscle to bone

**Answer: B**



[Watch Video Solution](#)

12. Mammalian bone differs from cartilage in the presence of

- A. Collagen
- B. Blood vessels
- C. Lymphatic vessels
- D. Harversian canals

**Answer: D**



Watch Video Solution

13. Areolar connective tissue joins

- A. Integument to muscle
- B. Bones to muscle
- C. Bone to bone

D. Fat body to muscle

**Answer: A**



**Watch Video Solution**

**14.** Collagen fibres are secreted by

A. Histiocytes

B. Fibroblasts

C. Mast\_cells

D. Macrophages

**Answer: B**



**Watch Video Solution**

**15.** Which of the following is set of connective tissue only?

- A. Blood, bone, skin
- B. Blood, bone, muscle
- C. Bone, tendon, muscle
- D. Cartilage, bone, blood

**Answer: D**

 [Watch Video Solution](#)

**16. Which is not a component of areolar tissue?**

- A. Fibroblast
- B. Macrophages
- C. Schwann cell
- D. Mast cells

**Answer: C**

 [Watch Video Solution](#)

17. Fat is stored in

- A. Liver cells
- B. Alveolar tissue
- C. Adipose tissue
- D. Lymph glands

**Answer: C**



Watch Video Solution

18. Blood consists of

- A. Plasma +W.B.Cs
- B. R.B.Cs +W.B.Cs + Platelets
- C. Plasma +Bone marrow



D. Plasma + R.B.Cs + W.B.Cs + Platelets

**Answer: D**



**Watch Video Solution**

**19.** Supportive connective tissue means

- A. Tendon and ligament
- B. Blood and lymph
- C. Adipose and areolar tissue
- D. Bone and cartilage

**Answer: D**



**Watch Video Solution**

**20.** Hardest tissue of the body is

A. Cartilage

B. Fibrous connective tissue

C. Bone

D. Areolar tissue

**Answer: C**



[Watch Video Solution](#)

**21.** The packing cells around the neurons in neural tissue are called

A. Mast cell

B. Histiocytes

C. Neuroglial cell

D. Fibroblast

**Answer: C**



[Watch Video Solution](#)

22. Intercalated disc and cross connections are the characteristic features of

- A. Cardiac muscles
- B. Skeletal muscles
- C. Smooth muscles
- D. voluntary muscle

**Answer: A**



Watch Video Solution

23. Which of the following are the characteristic of striated muscle?

- A. Cylindrical, Striped and branched
- B. Cylindrical, Striped and uninucleate

C. Spindle, unbranched and uninucleate

D. Cylindrical, Syncytial and unbranched

**Answer: D**



[Watch Video Solution](#)

**24.** Which cells do not form any layer but remain structurally separate?

A. Gland cells

B. Epithelial cells

C. Muscle cells

D. Nerve cells

**Answer: D**



[Watch Video Solution](#)

25. Which of the following muscle fibres do not show striation and taper at both ends?

- A. Cardiac muscle fibres
- B. Smooth muscle fibres
- C. Skeletal muscle fibres
- D. Voluntary muscle fibres

**Answer: B**



[Watch Video Solution](#)

26. Which one of the following has alternate striations and is branched?

- A. Biceps under autonomous control
- B. Iris muscle under control of will
- C. Heart muscle, involuntary

D. Muscle of visceral organs under autonomous control

**Answer: C**

 [Watch Video Solution](#)

**27.** Muscles involved in the movement of arm are

- A. Striated
- B. Unstriated
- C. Cardiac
- D. Smooth

**Answer: A**

 [Watch Video Solution](#)

**28.** Cardiac muscle contracts

- A. Slowly and get fatigued
- B. Quickly and do not get fatigued
- C. Slowly and do not get fatigued
- D. Quickly and get fatigued

**Answer: B**



[Watch Video Solution](#)

**29.** Units of nervous system are

- A. Cyton
- B. Axon
- C. Neuroglial cells
- D. Neurons

**Answer: D**



[Watch Video Solution](#)

 Watch Video Solution

30. Which pair of structures distinguish a nerve cell from other cells?

- A. Vacuoles and fibres
- B. Nucleus and mitochondria
- C. Perikaryon and dendrites
- D. Flagellum and medullary sheath

**Answer: C**



Watch Video Solution

## Assignment Section A

1. The term 'tissue' was introduced by

- A. Robert Hooke



B. Bichat

C. Ruysch

D. Mayer

**Answer: B**

 [Watch Video Solution](#)

2. Presence of tissues in a multicellular organisms ensures

A. Faster development

B. Division of labour

C. Higher reproductive potential

D. Body strength

**Answer: B**

 [Watch Video Solution](#)

3. A group of cells alike in form, function and origin constitute a/an

- A. Tissue
- B. Organ
- C. Organelle
- D. Organ system

**Answer: A**



[Watch Video Solution](#)

4. The tissue that external and internal surfaces of parts of body in animals is

- A. Connective
- B. Muscular
- C. Nervous

D. Epithelial

**Answer: D**



**Watch Video Solution**

5. Cells of germinal epithelium are

A. Cuboidal

B. Columnar

C. Ciliated

D. Squamous

**Answer: A**



**Watch Video Solution**

6. Cell junctions like tight, adhering and gap junctions are mainly present between the neighbouring cells of

- A. Neural tissue
- B. Connective tissue
- C. Muscular tissue
- D. Epithelial tissue

**Answer: D**



[Watch Video Solution](#)

7. Goblet cells secrete

- A. Mucus
- B. Enzymes
- C. HCl

D. Hormones

**Answer: A**



**Watch Video Solution**

**8. Pavement epithelium is an alternative name for**

- A. Squamous epithelium
- B. Cuboidal epithelium
- C. Ciliated epithelium
- D. Compound epithelium

**Answer: A**



**Watch Video Solution**

9. Match the following

Column-I	Column-II
a. Squamous epithelium	(i) Lining of intestine.
b. Cuboidal epithelium	(ii) Ovary
c. Columnar epithelium	(iii) Blood vessels
d. Ciliated epithelium	(iv) Bronchioles



Watch Video Solution

10. Brush borderd columnar epithelial tissue is located in

- A. Fallapian tube
- B. Oesophagus
- C. Trachea
- D. Small intestine

Answer: D



Watch Video Solution

11. Which of the following cells of connective tissue secrete antibodies?

- A. Mast cells
- B. Plasma cells
- C. Macrophages
- D. Fibroblasts

**Answer: B**



**Watch Video Solution**

12. Trapped dust particles are pushed out of respiratory tract by

- A. Squamous epithelium
- B. Glandular epithelium
- C. Ciliated epithelium
- D. Compound epithelium

**Answer: C**



**Watch Video Solution**

**13.** Dense irregular connective tissue is found in

- A. Skin
- B. Tendon
- C. Ligament
- D. All of these

**Answer: A**



**Watch Video Solution**

**14.** The cells of connective tissue which produce histamine are

- A. Fibroblasts



B. Macrophages

C. Mast cells

D. Plasma cells

**Answer: C**



[Watch Video Solution](#)

15. Blubber of whale and hump of camel are

A. Arealar tissue

B. Adipose tissue

C. Tendon

D. Muscular tissue

**Answer: B**



[Watch Video Solution](#)

**16.** Haversian canals are found in

- A. Matrix of mammalian bone
- B. Matrix of amphibian bone
- C. Matrix of reptilian bone
- D. All of these

**Answer: A**



**Watch Video Solution**

**17.** The protein which occurs in the matrix of bone is

- A. Ossein
- B. Chondrin
- C. Keratin
- D. Globulin

**Answer: A**



**Watch Video Solution**

**18.** Select the incorrect statement w.r.t the structure of a bone

- A. The matrix of bone is present in the form of layers called lamellae
- B. Lamellae consist of fluid filled spaces called lacunae
- C. Lacunae contain bone cells called chondrocytes
- D. The matrix is hard because of the presence of salts such as calcium phosphate

**Answer: C**



**Watch Video Solution**

19. The most widely distributed connective tissue in the body of animals is

- A. Areolar
- B. Adipose tissue
- C. Cartilage
- D. Dense irregular

**Answer: A**



[Watch Video Solution](#)

20. The connective tissue which acts as an insulator and prevent loss of heat from the body is

- A. Areolar
- B. Adipose tissue

C. Blood

D. Cartilage

**Answer: B**



**Watch Video Solution**

**21. Both RBCs and WBCs are formed in**

A. Cartilage

B. Thyroid

C. Bone marrow

D. Plasma

**Answer: C**



**Watch Video Solution**

22. Which of the following cells in areolar tissue are phagocytic?

- A. Histiocytes
- B. Fibroblasts
- C. Macrophages
- D. Both (1) & (2)

**Answer: A**



[Watch Video Solution](#)

23. The connective tissue in which the matrix is not secreted by its component cells is

- A. Skeletal
- B. Vascular/fluid
- C. Dense regular

D. Dense irregular

**Answer: B**



**Watch Video Solution**

**24.** Which of the following muscle act involuntarily?

- (a) Striated muscle
- (b) Smooth muscle
- (c) Cardiac muscle
- (d) Skeletal muscle

A. (a) & (b)

B. (b) & (C)

C. © &(d)

D. (a) &(d)

**Answer: B**



[Watch Video Solution](#)

25. In a skeletal muscle fibre, the nuclei lie are

- A. Diffused
- B. Centrally
- C. Peripherally
- D. Absent

**Answer: C**



[Watch Video Solution](#)

26. Intercalated discs are present in

- A. Striated muscles
- B. Unstriated muscles
- C. Cardiac muscles



D. Neurons

**Answer: C**



[Watch Video Solution](#)

27. Which types of muscles show peristaltic movements in the gastrointestinal tract?

A. Striated

B. Smooth muscle fibres

C. Cardiac muscles

D. Skeletal

**Answer: B**



[Watch Video Solution](#)

**28.** Cardiac muscle fibres are

- A. Striated and involuntary
- B. Striated and voluntary
- C. Non-striated and involuntary
- D. Non-striated and voluntary

**Answer: A**



**Watch Video Solution**

**29.** Gap junction are characteristically found in

- A. Skeletal muscle
- B. Cardiac muscles
- C. Multi-unit smooth muscles
- D. Striated muscles

**Answer: B**



**Watch Video Solution**

**30. Contractile proteins are found in**

- A. Bone
- B. Blood
- C. Cartilage
- D. Muscles

**Answer: D**



**Watch Video Solution**

**31. Sprain is due to pulling of**

- A. Tendon

B. Ligament

C. Muscle

D. Nerve

**Answer: B**



[Watch Video Solution](#)

**32.** The nerve cells do not possess

A. Axon

B. Dendrites

C. Nerve ending

D. Adhering junction

**Answer: D**



[Watch Video Solution](#)

**33.** Nissl's granules are present in which part of a neuron?

- A. Cyton
- B. Synaptic knobs
- C. Axon
- D. Nerve endings

**Answer: A**



**Watch Video Solution**

**34.** The functional junction between the axon of one neuron and the dendrites of the next is called

- A. Desmosome
- B. Synapse
- C. Oblique bridge

D. Tight junction

**Answer: B**



**Watch Video Solution**

**35. Neuroglia**

A. Protect neurons

B. Support neurons

C. Make up more than one-half the volume of neural tissue

D. All of these

**Answer: D**



**Watch Video Solution**

1. Epithelial cells involved in absorption of digested food have on their free surface.

- A. Pinocytic vesicles
- B. Microvilli
- C. Zymogen granules
- D. Phagocytic vesicles

**Answer: B**



[Watch Video Solution](#)

2. The epithelial tissue present on the inner surface of bronchioles and fallopian tubes is

- A. Squamous
- B. Cuboidal

C. Glandular

D. Ciliated

**Answer: D**



**Watch Video Solution**

3. Which of the following is incorrect w.r.t junction and its function?

- A. Tight junction - Promotes leaking of substances across a tissue
- B. Adhering junction - Keeps neighbouring cells together
- C. Gap junction - connects the cytoplasm of adjoining cells for rapid transfer of ions and small molecules
- D. Gap junction - Facilitates the cells to communicate with each other

**Answer: A**



**Watch Video Solution**



4. During an injury, nasal septum gets damaged and for its recovery which cartilage is preferred

Or

Which of the following is a transparent tissue

- A. Elastic cartilage
- B. Hyaline cartilage
- C. Calcified cartilage
- D. Fibrous cartilage

**Answer: B**



[Watch Video Solution](#)

5. Which cartilage is present at the end of long bones?

- A. Calcified cartilage
- B. Hyaline cartilage

C. Elastic cartilage

D. Fibrous cartilage

**Answer: B**



**Watch Video Solution**

**6.** The kind of tissue that forms the supportive structure in our pinna (external ears) is also found in -

A. Tip of the nose

B. Vertebrae

C. Nails

D. Ear ossicles

**Answer: A**



**Watch Video Solution**

7. What happens if bone of frog is kept in dilute hydrochloric acid:

- A. It becomes flexible
- B. It turns black
- C. It breaks into pieces
- D. It shrinks

**Answer: A**



[Watch Video Solution](#)

8. Which of the following is not a characteristic feature of biceps muscle?

- A. We are usually able to make it contract merely by thinking about it
- B. It has alternative light and dark bands

C. Its muscle fibre taper at both ends

D. Its muscle fibres are bundled together in a parallel fashion

**Answer: C**



[Watch Video Solution](#)

9. Which one of the following is correct pairing of a body part and the kind of muscle tissue that moves it

A. Iris - Involuntary smooth muscle

B. Heart wall - involuntry unstriated muscle

C. Biceps of upper arm - Smooth muscle fibres

D. Abdominal wall - smooth muscle

**Answer: A**



[Watch Video Solution](#)

10. Inflammatory substances produced during allergic reactions by mast cells is

- A. Histamine
- B. Heparin
- C. Serotonin
- D. Fibrinogen

**Answer: A**



[Watch Video Solution](#)

11. Which of the following cells can release heparin and histamine in the blood?

- A. Mast cells
- B. Eosinophils

C. Mast cells and basophils

D. Eosinophils and mast cells

**Answer: C**

 [Watch Video Solution](#)

**12.** Nucleus pulposus is present in

A. Centre of skull bones

B. Patella

C. Scapula

D. Centre of intervertebral disc

**Answer: D**

 [Watch Video Solution](#)

13. Unipolar neurons with an axon and no dendrite are present in :

- A. Embryos
- B. Dorsal root ganglia of spinal cord
- C. Brain
- D. Retina

**Answer: A**



[Watch Video Solution](#)

## Assignment Section C

1. Smooth muscles are

- A. involuntary, fusiform, non-striated
- B. voluntary, multinucleate, cylindrical, involuntary, cylindrical, striated

C. Involuntary, cylindrical, striated

D. voluntary, spindle-shaped, uninucleate

Answer: A



Watch Video Solution

2. Which type of tissue correctly matches with its locations ?

<b>Tissue</b>	<b>Location</b>
(1) <b>Cuboidal epithelium</b>	Lining of stomach
(2) <b>Smooth muscle</b>	Wall of intestine
(3) <b>Areolar tissue</b>	Tendons
(4) <b>Transitional epithelium</b>	Tip of nose



Watch Video Solution

3. The function of the gap junction is to

A. Stop substances from leaking across a tissue



- B. Performing cementing to keep neighbouring cells together
- C. Facilitated communication between adjoining cells by connecting the cytoplasm for rapid transfer of ions, small molecules and some large molecules
- D. Separate two cells from each other

**Answer: C**



[Watch Video Solution](#)

4. Chose the correctly matched pair : [AIMPT-2014]

- A. Tendon-specialized connective tissue
- B. Adipose tissue-dense connective tissue
- C. Areolar tissue-loose connective tissue
- D. Cartilage loose connective tissue

**Answer: C**



**Watch Video Solution**

**5. Chose the correctly matched pair : [AIMPT-2014]**

- A. Inner lining of savivary ducts - ciliated epithelium
- B. Moist surface of buccal cavity - Glandular epithelium
- C. Tubular parts of nephrons - Cuboidal epithelium
- D. Inner surface of bronchioles - Squamous epithelium

**Answer: C**



**Watch Video Solution**

**6. Which one is the most abundant protein in the animal world? [AIPMT (prelims)-2012]**

A. Insulin

B. Trypsins

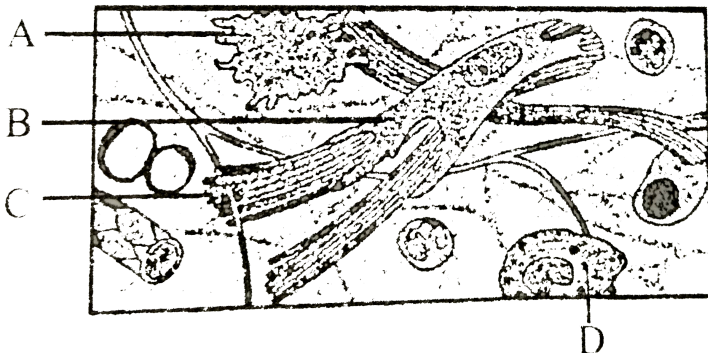
C. Haemoglobin

D. Collagen

**Answer: D**

 [Watch Video Solution](#)

7. Given below is the diagrammatic sketch of a certain type of connective tissue. Identify the parts labelled A, B, C and D, and select the right option about them.



- A. Part-A- Macrophage, Part-B-Fibroblast, Part-C-Collagen, Part-D-Mast cells
- B. Part-A-Mast-cell, Part-B-Macrophage, Part-C-Fibroblast, Part-D-Collagen fibres
- C. Part A-Macrophage, Part B- Collegen fibres, Part C- Fibroblast, Part-D- Mast cell
- D. Part A- Mast cell, Part B- Collagen fibres, Part C- Fibroblast, Part D- Macrophage

**Answer: A**



**Watch Video Solution**

8. Supportive skeletal structures in the human external ears and nose tip are of

A. Cartilage

B. Ligament

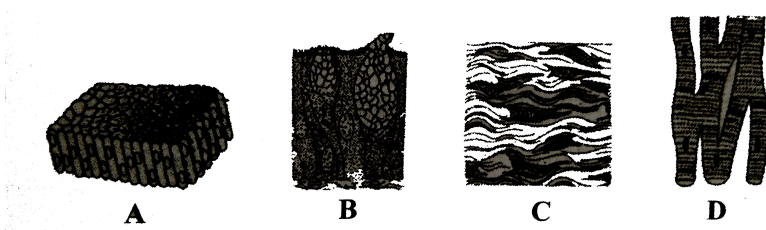
C. Areolar tissue

D. Bone

Answer: A

 Watch Video Solution

9. The four figures (A, B, C and D) given below represent four different types of animal tissues. Which one of these is correctly identified in the given options along with its correct location and function ?



A.                      Tissue    Location    Function  
(B)   Glandular epithelium   Intestine   secretion

B.

                    Tissue    Location    Function  
(C)   Collagen fibres   Cartilage   Attach skeletal muscles to bones

	Tissue	Location	Function
C.	(D) Smooth muscle tissue	Heart	Heart contraction

D.

	Tissue	Location	Function
(A)	Columnar epitherium	Nephron	secretion and absorpction

**Answer: A**



[Watch Video Solution](#)

10. The ciliated columnar epithelial cells in humans are known to occur in

- A. Fallopian tubes and urethra
- B. Eustachain tube and stomach lining
- C. Bronchioles and fallopian tubes
- D. Bile duct and oesophagus

**Answer: C**



[Watch Video Solution](#)

11. The cells lining the blood vessels belongs to the category of :

- A. Columnar epithelium
- B. Connective tissue
- C. Smooth muscle tissue
- D. Squamous epithilium

**Answer: D**



[Watch Video Solution](#)

12. The kind of epithelium which forms inner walls of blood vessels is

- A. Squamous epithelium
- B. Cuboidal epithelium
- C. Columnar epithelium

D. Ciliated columnar epithelium

**Answer: A**



**Watch Video Solution**

**13.** The epithelial tissue present on the inner surface of bronchioles and fallopian tubes is

A. Glandular

B. Ciliated

C. Squamous

D. Cuboidal

**Answer: B**



**Watch Video Solution**



14. The cell junctions called tight, adhering and gap junctions are found in :

- A. Connective tissue
- B. Epithelial tissue
- C. Neural tissue
- D. Muscular tissue

**Answer: B**



[Watch Video Solution](#)

15. The kind of tissue that forms the supportive structure in our pinna (external ears) is also found in -

- A. Nails
- B. Ear ossicles

C. Tip off the nose

D. Vertebrae

**Answer: C**

 [Watch Video Solution](#)

**16. Mast cells secrete :-**

A. Hippurin

B. Myoglobin

C. Histamine

D. Haemoglobin

**Answer: C**

 [Watch Video Solution](#)

17. Epithelial cells involved in absorption of digested food have on their free surface.

- A. Pinocytic vesicles
- B. Phagocytic vesicles
- C. Zymogen granules
- D. Micro-villi

**Answer: D**



[Watch Video Solution](#)

18. Four healthy people in their twenties got involved in injuries resulting in damage and death of few cells of the following. Which of the cells are least likely to be replaced by new cells

- A. Osteocytes
- B. Malpighian layer of the skin

C. Liver cells

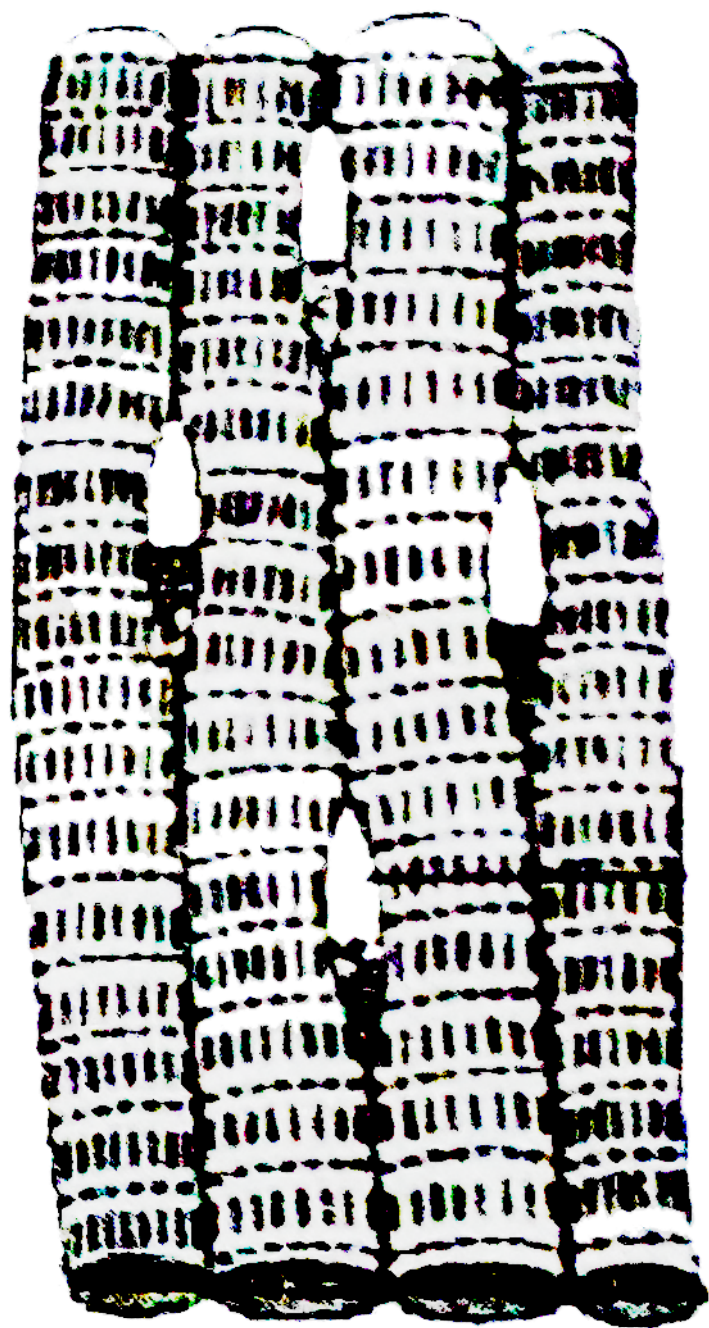
D. Neurons

**Answer: D**



**Watch Video Solution**

**19.** Identify the tissue shown in the diagram and match with its characteristics and its location



- A. Skeletal muscle, shows striations and closely attached with the bones of the limbs.
- B. Smooth muscles, show branching, found in the wall of the heart
- C. Cardiac muscles, unbranched muscles, found in the walls of the heart
- D. Striated muscles, tapering at both-ends, attached with the bones of the ribs.

**Answer: A**



**Watch Video Solution**

**20.** Which one of the following human organs is often called the "graveyard" of RBCs?

- A. Gall bladder
- B. Kidney

C. Spleen

D. Liver

**Answer: C**



**Watch Video Solution**

**21.** Phagocytosis and pinocytosis are collectively termed as

A. Endocytosis

B. Suspension feeding

C. Omnivores

D. Mucous trap

**Answer: A**



**Watch Video Solution**

22. Epithelial tissue with thin flat cells appearing like packed tiles occurs on

- A. Outer surface of ovary
- B. Inner lining of fallopian tube
- C. Inner lining of stomach
- D. Inner lining of cheeks

**Answer: D**



**Watch Video Solution**

23. Desmosomes are concerned with

- A. Cell division
- B. Cell adherence
- C. Cytolysis



D. Cellular excretion

**Answer: B**



**Watch Video Solution**

**24.** Stratum germinativum is an example of which kind of epithelium ?

A. Columnar

B. Squamous

C. Cuboidal

D. Ciliated

**Answer: A**



**Watch Video Solution**

**25.** Basement membrane is made up of

A. Cell product of epithelial cell

B. Epidermal cell only

C. Both (2) &(3)

D. d) no cell at all , but is a product of epithelial cells

**Answer: A**



[Watch Video Solution](#)

**26.** The nissl's granules of nerves cell are made up of

A. DNA

B. RNA

C. Ribosome

D. Protein

**Answer: C**



[Watch Video Solution](#)

27. Protein present in cartilage is

- A. Cartilagin
- B. Ossein
- C. Chondrin
- D. Oesein

**Answer: C**



Watch Video Solution

28. The functional unit of contractile system in a striated muscle is

- A. Sarcomere
- B. Z-band
- C. Cross bridges

D. Myofibril

**Answer: A**



**Watch Video Solution**

**29.** Which of the following is the contractile protein of a muscle?

A. Tropomyosin

B. Tubulin

C. Myosin

D. All of these

**Answer: C**



**Watch Video Solution**

**30.** Tendon is made up of

A. Yellow fibrous connective tissue

B. Modified white fibrous tissue

C. Areolar tissue

D. Adipose tissue

**Answer: B**



[Watch Video Solution](#)

**31. Ligament is**

A. Inelastic white fibrous tissue

B. Modified white fibrous tissue

C. Modified yellow elastic fibrous tissue

D. None of these

**Answer: C**



[Watch Video Solution](#)

32. Reason, why hair loss is more in old age:

- A. Reduction of blood supply
- B. Decrease in protein synthesis
- C. Low energy production
- D. Reduced storage of glycogen

**Answer: A**



Watch Video Solution

33. What happens if bone of frog is kept in dilute hydrochloric acid:

- A. Will become flexible
- B. Will turn black
- C. Will break into pieces

D. Will shrink

**Answer: A**



**Watch Video Solution**

**34.** Characteristic of simple epithelium is : -

- A. They are arranged indiscriminately
- B. They make a definite layer
- C. Continue to divide and help in organ function
- D. None of these

**Answer: B**



**Watch Video Solution**

**35.** What sacromere?

- A. Part between two H-line
- B. Part between two A-line
- C. Part between two I-band
- D. Part between two Z- line

**Answer: D**

 [Watch Video Solution](#)

**36. Which statement is correct for muscle contraction?**

- A. Length of H-zone decreases
- B. Length of A-decreases
- C. Length of I-band decreases
- D. Length of two Z- line increases

**Answer: A**

 [Watch Video Solution](#)



37. What will happen if ligaments are cut or broken :-

- A. Bone will move freely at joint and no pain
- B. Bone less movable at joint & pain
- C. Bone will become unfixed
- D. Bone will become fixed

**Answer: C**



Watch Video Solution

38. Node of Ranvier occurs where

- A. Neurilemma is discountinuos
- B. Myelin sheath is discountinuos
- C. Both neurilemma and myelin sheath are discountinuos

D. Covered by myelin sheath

**Answer: B**



[Watch Video Solution](#)

39. Which one of the following contains the largest quantity of extracellular material ?

A. Striated muscles

B. Areolar tissue

C. stratified epithelium

D. Myelinated nerve fibres

**Answer: B**



[Watch Video Solution](#)

40. What used to be described as Nissl granules in a nerve cell are now identified as

- A. Cell metabolites
- B. Fat granules
- C. Ribosomes
- D. Mitochondria

**Answer: C**



[Watch Video Solution](#)

41. Mast cells of connective tissue contain

- A. Vasopressin and relaxin
- B. Heparin and histamine
- C. Heparin and calcitonin

D. Serotonin and melanin

**Answer: B**



[Watch Video Solution](#)

42. In which one of the following preparations are you likely to come across cell junctions most frequently ?

A. Thrombocytes

B. Tendon

C. Hyaline cartilage

D. Ciliated epithelium

**Answer: D**



[Watch Video Solution](#)

43. Which one of the following mammalian cells is not capable of metabolising glucose to carbon-dioxide aerobically ?

A. Unstriated muscle cells

B. Liver cells

C. Red blood cells

D. White blood cells

**Answer: C**



[Watch Video Solution](#)

44. Which one of the following is correct pairing of a body part and the kind of muscle tissue that moves it

A. Iris - Involuntary smooth muscle

B. Heart wall - involuntry unstriated muscle

C. Biceps of upper arm - Smooth muscle fibres

D. Abdominal wall - smooth muscle

**Answer: A**



**Watch Video Solution**

## Assignment Section D

1. A: Mammary gland are apocrine glands.

R: The product of secretion is shed with the whole cell leading to its destruction.

A. If both assertion & reaction are true and the reason is the correct explanation of the assertion, then mark (1).

B. If both assertion & Reaction are true but the reaction is not the correct explanation of the assertion, then mark (2).

C. If assertion is not the correct explanation but reason is false, them mark (3).

D. If both assertion and reason are false statements, them mark (4).

**Answer: C**



**Watch Video Solution**

**2. A:** Human bone has haversian canals.

**R:** Haversian canals are interconnected by Volkmann's canals.

A. If both assertion & reaction are true and the reason is the correct explanation of the assertion, then mark (1).

B. If both assertion & Reaction are true but the reaction is not the correct explanation of the assertion, them mark (2).

C. If assertion is not the correct explanation but reason is false, them mark (3).

D. If both assertion and reason are false statements, then mark (4).

**Answer: B**



**Watch Video Solution**

3. A: In non-keratinised stratified squamous epithelium stratum corneum is without keratin.

R: Such Epithelium occurs over surfaces which are not exposed to drying but are subject to abrasions.

A. If both assertion & reaction are true and the reason is the correct explanation of the assertion, then mark (1).

B. If both assertion & Reaction are true but the reaction is not the correct explanation of the assertion, then mark (2).

C. If assertion is not the correct explanation but reason is false, then mark (3).



D. If both assertion and reason are false statements, then mark (4).

**Answer: A**



**Watch Video Solution**

4. A: The nucleus of plasma cell has cart wheel appearance.

R: Nucleus contains peripheral clumps of heterochromatin.

A. If both assertion & reason are true and the reason is the correct explanation of the assertion, then mark (1).

B. If both assertion & Reason are true but the reason is not the correct explanation of the assertion, then mark (2).

C. If assertion is not the correct explanation but reason is false, then mark (3).

D. If both assertion and reason are false statements, then mark (4).

**Answer: A**



[Watch Video Solution](#)

5. A: Yellow bone marrow is reserve erythropoietic tissue.

R: After severe bleeding yellow marrow may convert to red marrow.

A. If both assertion & reaction are true and the reason is the correct explanation of the assertion, then mark (1).

B. If both assertion & Reaction are true but the reaction is not the correct explanation of the assertion, them mark (2).

C. If assertion is not the correct explanation but reason is false, them mark (3).

D. If both assertion and reason are false statements, them mark (4).

**Answer: A**



[Watch Video Solution](#)

**6. A:** The cells that produce and secrete fibres are called fibroblasts.

**R:** Fibroblasts are the characteristic cells of all types of connective tissue.

A. If both assertion & reaction are true and the reason is the correct explanation of the assertion, then mark (1).

B. If both assertion & Reaction are true but the reaction is not the correct explanation of the assertion, then mark (2).

C. If assertion is not the correct explanation but reason is false, then mark (3).

D. If both assertion and reason are false statements, then mark (4).

**Answer: C**



**Watch Video Solution**

7. A: Gap junctions connect the cytoplasm of adjoining cells.

R: Gap junctions facilitate the cells to communicate with each other.

A. If both assertion & reaction are true and the reason is the correct explanation of the assertion, then mark (1).

B. If both assertion & Reaction are true but the reaction is not the correct explanation of the assertion, then mark (2).

C. If assertion is not the correct explanation but reason is false, then mark (3).

D. If both assertion and reason are false statements, then mark (4).

**Answer: B**



[Watch Video Solution](#)

8. A: Intercellular material is minimum between the cells of epithelial tissue.

R: Epithelial cells are not secretory in nature.

- A. If both assertion & reaction are true and the reason is the correct explanation of the assertion, then mark (1).
- B. If both assertion & Reaction are true but the reaction is not the correct explanation of the assertion, then mark (2).
- C. If assertion is not the correct explanation but reason is false, then mark (3).
- D. If both assertion and reason are false statements, then mark (4).

**Answer: C**



[Watch Video Solution](#)

9. A: Smooth muscle fibres are unstriated, fusiform and uninucleate.

R: These cells are involuntary in functions.

- A. If both assertion & reaction are true and the reason is the correct explanation of the assertion, then mark (1).
- B. If both assertion & Reaction are true but the reaction is not the correct explanation of the assertion, them mark (2).
- C. If assertion is not the correct explanation but reason is false, them mark (3).
- D. If both assertion and reason are false statements, them mark (4).

**Answer: B**



[Watch Video Solution](#)

**10. A:** The inner lining of trachea, bronchi and fallopian tubes has simple epithelium with non-motile cilia.

**R:** Cilia form the brush-border.

- A. If both assertion & reaction are true and the reason is the correct explanation of the assertion, then mark (1).
- B. If both assertion & Reaction are true but the reaction is not the correct explanation of the assertion, them mark (2).
- C. If assertion is not the correct explanation but reason is false, them mark (3).
- D. If both assertion and reason are false statements, them mark (4).

**Answer: D**



[Watch Video Solution](#)