



## **BIOLOGY**

# **BOOKS - ARIHANT NEET BIOLOGY (HINGLISH)**

## **ANIMAL TISSUES**

### **Check Point**

1. The term tissue was coined by

A. Mayer

B. Bichat

C. Leewenhoek

D. Aristotle

**Answer: B**



**Watch Video Solution**

2. The study of tissues is known as

A. tissulogy

B. histology

C. epitheology

D. anatomy

**Answer: B**



**Watch Video Solution**

**3. Epithelium cells are derived from**

A. ectoderm

B. endoderm

C. mesoderrn

D. All of these

**Answer: D**



**Watch Video Solution**

4. Presence of extracellular basement membrane is the peculiarity of

A. nervous tissue

B. vascular tissue

C. epithelial tissue

D. connective tissue

**Answer: C**



**Watch Video Solution**

5. Adjacent epithelial cells are held together by means of

- A. rnicosomes
- B. liposomes
- C. desmosomes
- D. glyoxysome

**Answer: C**



[Watch Video Solution](#)

6. These cellular junctions are meant for chemical exchange between adjacent cells.

- A. Intercellular bridges
- B. Gap junctions
- C. Anchoring junctions
- D. Tight junctions

**Answer: B**



[Watch Video Solution](#)

7. The function of microvilli is

- A. extensive movement of substances over cell surfaces
- B. increase in surface area for absorption
- C. cellular movement
- D. specialised uptake of macromolecules

**Answer: B**



**Watch Video Solution**

8. Classification of epithelia is based on thr-  
number of layers of cells and

A. shape

B. staining properties

C. size

D. location

**Answer: A**



**Watch Video Solution**



9. Squamous epithelium is also called

A. germinai epithelium

B. columnar epithelium

C. pavement epithelium

D. sensoty epithelium

**Answer: C**



**Watch Video Solution**

**10.** Bowman's capsule of mammalian nephron is lined by

- A. columnar epithelial cells
- B. squamous epithelial cells
- C. cuboidal epithelial cells
- D. ciliated columnar epithelial cells

**Answer: B**



**Watch Video Solution**

11. Transition epitheliurn lines the

A. epiglottis

B. skin

C. urinary bladder

D. Failopian tube

**Answer: C**



**Watch Video Solution**

12. Glands are formed of

- A. secretory epithelial cells
- B. transitional epithelial cells
- C. stratified epithelial cells
- D. pseudostratified epithelial cells

**Answer: A**



**Watch Video Solution**

**13.** An example of holocrine gland is a

- A. sweat gland

B. salivary gland

C. pancreatic gland

D. sebaceous gland

**Answer: D**



**Watch Video Solution**

**14.** An exocrine gland, in which a portion of the secretory cell is discharged with the secretion is termed as

A. apocrine

B. merocrine

C. endocrine

D. holocrine

**Answer: A**



**Watch Video Solution**

**15.** Epithelia are involved in all the following except

A. protection

B. secretion

C. connection

D. absorption

**Answer: C**



**Watch Video Solution**

**16. Connective tissue is**

A. helpful in the body defence

B. helpful in tissue repair

C. helpful in fat storage

D. AH of the above

**Answer: D**



**Watch Video Solution**

**17.** Which one of the following is not a connective tissue fibre?

A. Collagen fibre

B. Reticular fibre

C. Elastic fibre

D. Muscle fibre



**Answer: D**



**Watch Video Solution**

**18.** Which one of the following categories does areolar tissue belong?

- A. Epithelial
- B. Muscular
- C. Connective
- D. Neural

**Answer: C**



[Watch Video Solution](#)

**19.** Adipose tissue stores

- A. protein
- B. carbohydrates
- C. fat droplets
- D. All of these

**Answer: C**



[Watch Video Solution](#)

20. Wharton's jelly is associated with

A. pigmented connective tissue

B. mucoid connective tissue

C. reticular connective tissue

D. adipose connective tissue

**Answer: B**



**Watch Video Solution**

21. Hyaline cartilage is present at

- A. the ends of digits
- B. tip of the nose
- C. epiglottis of mammals
- D. articular ends of long bones

**Answer: D**



**Watch Video Solution**

**22. Calcified cartilage is found in**

- A. head of femur

B. pectoral girdle

C. ribs and sternum

D. Both (a) and (b)

**Answer: B**



**Watch Video Solution**

**23.** Bone forming cells are called

A. osteoclast

B. osteoblast

C. chondroblast

D. osteocyte

**Answer: B**



**Watch Video Solution**

**24.** About 60% inorganic components are present  
in

A. cartilage

B. bone

C. connective tissue

D. None of these

**Answer: B**



**Watch Video Solution**

**25.** Haversian canal in the bone of mammals are connected by small blood vessel canals called

A. Schlemm's canal

B. Volkmann's canal

C. portal capillaries

D. sinuses

**Answer: B**



**Watch Video Solution**

**26. Blood is a**

- A. epithelial tissue
- B. muscular tissue
- C. connective tissue
- D. supportive tissue

**Answer: C**



**Watch Video Solution**



 Watch Video Solution

27. The pH of human blood is

A. 4.2

B. 6.1

C. 7.3

D. 10

**Answer: C**



Watch Video Solution

28. The smallest protein present in the blood is

- A. globulins
- B. albumins
- C. prothrombin
- D. fibrinogen

**Answer: B**



**Watch Video Solution**

29. Which of the following are the defence compound(s) in blood plasma?

A. Immunoglobulins

B. Properdin

C. Lysozymes

D. All of these

**Answer: D**



**Watch Video Solution**

**30.** Non-nucleated, biconcave RBCs are found in all placentals except

A. rhesus monkey

B. bats

C. camel

D. shrew

**Answer: C**



**Watch Video Solution**

**31.** The blood haemoglobin count is done by

A. haemometer

B. spirometer

C. haernoglobrometer

D. haernoalbuminometer

**Answer: C**



**Watch Video Solution**

**32.** Blood cells are formed in bone marrow. This process is known as

A. haemolysis

B. erythroblastosis

C. haemopoiesis

D. None of these

**Answer: C**



**Watch Video Solution**

**33.** Lifespan of mammalian RBC is

A. 120 days

B. 100 days

C. less than 100 days

D. None of these

**Answer: A**



**Watch Video Solution**

**34.** How many leucocytes are present in humans in  $1\mu L$  of blood?

A. 100 million

B. 10000

C. 3.5 million

D. 5000

**Answer: D**



Watch Video Solution

35. How many types of leucocytes are found in mammals?

A. Five

B. Two

C. Four

D. Three

**Answer: B**



Watch Video Solution



36. Granutocytes are produced in

A. liver

B. bone marrow

C. sploen

D. None of these

**Answer: B**



**Watch Video Solution**

**37. Agranulocytes normally develop in**

- A. bone marrow
- B. liver
- C. lymph glands and spleen
- D. None of these

**Answer: C**



**Watch Video Solution**

**38.** The percentage of eosinophils, neutrophils and monocytes in our blood are ..... respectively.

A. 2.3%, 60% and 5%

B. 2%, 5% and 26%

C. 5%, 10% and 40%

D. 30%, 18% and 5%

**Answer: A**



**Watch Video Solution**

**39.** Which of the following WBC has many lobed nucleus?

- A. Monocytes
- B. Lymphocytes
- C. Neutrophils
- D. Basophils

**Answer: C**



**Watch Video Solution**

40. Blood platelets are present in the blood of

A. fishes

B. amphibians

C. reptiles

D. mammals

**Answer: D**



**Watch Video Solution**

**41.** Muscular tissue is derived from which dermal layer?

A. Ectoderm

B. Endoderm

C. Mesoderm

D. Both ectoderm and endoderm

**Answer: C**



**Watch Video Solution**

42. Which of the following is not a function of smooth muscle?

A. Peristalsis

B. Vasodilation of blood vessels

C. Distension of urinary bladder during micturition

D. Pumping of blood

**Answer: D**



**Watch Video Solution**

**43.** Which of the muscles are attached to bones?

A. Smooth muscles

B. Skeletal muscles

C. Cardiac muscles

D. All of these

**Answer: B**



**Watch Video Solution**

**44.** Multinucleate muscle fibres are



A. cardiac muscles

B. smooth muscles

C. skeletal muscles

D. Both (a) and (c)

**Answer: D**



**Watch Video Solution**

**45.** Each fasciculus of skeletal muscle has three coverings from outside to inside as

A. Endomysium → Epimysium →

Perirnysiurn

B. Perimysium → Epimysium →

Endomysium

C. Epirnysiurn → Perirnysiurn →

Endomysium

D. Epimysium → Endomysium →

Perimysium

**Answer: C**



**Watch Video Solution**

**46.** These muscle do not have regenerative capacity.

A. Skeletal muscle

B. Cardiac muscle

C. Smooth muscle

D. Both (a) and (b)

**Answer: B**



**Watch Video Solution**

**47.** Centrosomes are absent in

- A. nerve cells
- B. epithelial cells
- C. germinal cells
- D. All of these

**Answer: A**



**Watch Video Solution**

**48.** Neurilernma is an outer covering of

A. blood capillaries

B. muscle fibre

C. intestine

D. nerve fibre

**Answer: D**



**Watch Video Solution**

**49.** Myelin sheath around nerve fibres is secreted  
by

A. Schwann cell

B. mast cell

C. glial cell

D. astrocytes

**Answer: A**



**Watch Video Solution**

**50.** Schwann cell is found around

A. axon

B. cyton

C. dendrite

D. dendron

**Answer: A**



**Watch Video Solution**

**51. Nodes of Ranvier are found in**

A. cardiac muscle fibre

B. striated muscle fibre

C. myelinated nerve fibre

D. non-rnedullated nerve fibre

**Answer: C**



**Watch Video Solution**

**52. Apolar neurons are found in**

A. higher vertebrates

B. hurnans

C. Hydra

D. sponges



**Answer: C**



**Watch Video Solution**

**53.** Glial cells are an example of

A. epithelial cells

B. muscle cells

C. nervous tissue

D. connective tissue

**Answer: C**



**Watch Video Solution**

54. These cells makes up 90% of brain cells and they do not carry nerve impulse

- A. neuroscrrqatory cells
- B. motor neurons
- C. neurogllal cells
- D. ependymal cells

**Answer: C**



55. Ependymal cells are

- A. epithelial cells lining the ventricles of brain
- B. produce neurohormones
- C. found in close association with large nerve cells
- D. Both (a) and (c)

**Answer: A**



**Watch Video Solution**

# Chapter Exercises Taking It Together Assorted Questions Of The Chapter For Advanced Level Practice

1. A tissue is a

- A. group of separate organs that are coordinated in their activities
- B. group of similar cells that function together in a specialised activity
- C. layer of cells surrounding an organ
- D. sheet of cells, one layer thick

**Answer: B**



**Watch Video Solution**

2. The cells constituting a specific tissue have similar

A. function

B. origin

C. structure

D. All of these

**Answer: B**



[Watch Video Solution](#)

3. Cells lining the coelomic cavity are called

A. mesothelial cells

B. endothelial cells

C. epithelial cells

D. peritoneal cells

**Answer: A**



[Watch Video Solution](#)

4. Epithelial tissue always has an exposed outer surface and an inner surface anchored to connective tissue by a thin, non-cellular layer called the

- A. non-stratified layer
- B. stratified layer
- C. basement membrane
- D. fibroblast

**Answer: C**



**Watch Video Solution**

5. Identify the substance, which keeps the epithelial cells together.

A. Hyaluronic acid

B. Collagen

C. Mucin

D. Glycoprotein

**Answer: D**



**Watch Video Solution**



6. Brown fat is present in

- A. camel hump
- B. newborn babies
- C. dermis of skin
- D. GI tract

**Answer: B**



**Watch Video Solution**

7. Which type of tissue forms the inner lining of a blood vessel?

- A. Epithelial
- B. Connective
- C. Nervous
- D. Muscular

**Answer: A**



**Watch Video Solution**

8. Which type of tissue forms the thin surface for gas exchange in the lungs?

- A. Epithelial
- B. Connective
- C. Nervous
- D. Muscular

**Answer: A**



**Watch Video Solution**

9. Epithelial cells serve as

- A. lining cells
- B. secretory cells
- C. sensory cells
- D. All of these

**Answer: D**



**Watch Video Solution**

10. Epithelial cells get nutrients from

A. neighbouring cells

B. blood vessels

C. lymph vessels

D. underlying tissue

**Answer: D**



**Watch Video Solution**

**11.** The core protein present in cartilage is

A. chondrin

B. aggrecan

C. ossein

D. None of these

**Answer: B**



**Watch Video Solution**

**12.** Simple squamous epithelium is not found in

A. blood vessels

B. the lining of the mouth

C. lymph vessels

D. alveoli (air sacs) of the lungs

**Answer: B**



**Watch Video Solution**

**13.** The inability to absorb digested nutrients may be due to damage of which type of epithelium?

A. Ciliated columnar

B. Simple columnar

C. Simple squamous

D. Simple cuboidal.

**Answer: B**



**Watch Video Solution**

**14.** An epithelium with water proofing qualities is

- A. stratified cuboidal
- B. stratified columnar
- C. stratified squamous
- D. transitional epithelium



**Answer: C**



**Watch Video Solution**

**15.** Which one of the following types of cell is involved in making of the inner walls of large blood vessels'?

- A. Cuboidal epithelium
- B. Columnar epithelium
- C. Squamous epithelium
- D. Stratified epithelium

**Answer: C**



**Watch Video Solution**

**16.** Identify the animal, in which adipose tissue is excessively developed.

A. Desert rat

B. Bats

C. Whales

D. Beavers

**Answer: C**



[Watch Video Solution](#)

17. Germinal epithelial cells are present in

- A. seminiferous tubules
- B. uriniferous tubules
- C. lining of stomach
- D. inner lining of trachea

**Answer: A**



[Watch Video Solution](#)

**18.** Epidermis of skin of vcr1.cbrntcs comprises

A. adipose connective tissuc

B. epithelial tissue

C. muscular tissue

D. areolar connective tissue

**Answer: B**



**Watch Video Solution**

**19.** Which type of tissue fonns glands?

A. Epithelial

B. Connective

C. Nervous

D. Muscular

**Answer: A**



**Watch Video Solution**

**20.** The three germinal layers of the gastrula give rise to

A. epithelial tissues

B. muscular and nervous tissues

C. connective tissues

D. All of the above

**Answer: D**



**Watch Video Solution**

**21. Endocrine glands**

A. secrete hormones

B. are ductless glands

C. also secrete enzymes

D. Both (a) and (b)

**Answer: D**



**Watch Video Solution**

**22.** Adipocytes are also known as

A. fat cells

B. lipocytes

C. plasmocytes

D. Both (a) and (b)

**Answer: D**



**Watch Video Solution**

**23. Mammary glands are modified**

A. sweat glands

B. ceruminous glands

C. glands of Zeis

D. inguinal glands



**Answer: A**



**Watch Video Solution**

**24.** Which of the following is an epidermal structure of mammals?

A. Sebaceous gland

B. Receptors

C. Hair

D. Sweat gland

**Answer: A**



[Watch Video Solution](#)

25. An example of serous gland is

- A. parotid gland
- B. meibomian gland
- C. ceruminous gland
- D. preputial gland

**Answer: A**



[Watch Video Solution](#)

26. Sudoriferous glands occur in

A. lung

B. kidney

C. skin

D. alimentary canal

**Answer: C**



**Watch Video Solution**

27. The oil substance secreted by the ceruminous gland in the ear is called

A. ear wax

B. cerumen

C. oil

D. mucin

**Answer: A**



**Watch Video Solution**

**28.** The protein deposited in the dead superficial cells that makes the skin epithelium impervious to water is

A. mucus

B. elastin

C. keratin

D. collagen

**Answer: C**



**Watch Video Solution**

**29.** Goblet cells secrete

A. mucous

B. dilute HCl

C. polypeptide hormones

D. enzymes

**Answer: A**



**Watch Video Solution**

**30.** Dermis of the skin is formed of

- A. plasma and RBC
- B. plasma and thrombocytes
- C. heparin and corpuscles
- D. None of these

**Answer: D**



**Watch Video Solution**

**31. Goblet cells are a type of**

- A. multicellular gland

B. intracellular gland

C. unicellular gland

D. multicellular gland

**Answer: C**



**Watch Video Solution**

**32. Embryonic connective tissue is derived from**

A. ectoderm

B. endoderm



C. mcsoderm

D. mcsogloea

**Answer: C**



**Watch Video Solution**

**33. Maximum intercellular substance is found in**

A. connective tissue

B. nervous tissue

C. epithelial tissue

D. muscular tissue

**Answer: A**



**Watch Video Solution**

**34.** Matrix of the connective tissue is secreted by

A. fibrocytes

B. histiocytes

C. mast cells

D. plasma cells

**Answer: A**



**Watch Video Solution**

**35.** The function of dense regular connective tissue is

- A. elastic recoil
- B. binding and support
- C. treatment of anaemia
- D. articulation

**Answer: B**



Watch Video Solution

36. Vitamin-C is mainly helpful in

- A. growth of bones
- B. formation of connective tissue
- C. treatment of anaemia
- D. formation of visual pigment

**Answer: B**



Watch Video Solution

### 37. Areolar tissue

- A. is made of threads crossing each other and leaving a space between them
- B. is polymorphic
- C. is undifferentiated mesenchyma
- D. is found in hyaline cartilage

**Answer: A**



**Watch Video Solution**

**38.** Areolar tissue connects

A. the skin with muscles

B. muscles to muscles

C. bone to bone

D. bone to muscles

**Answer: A**



**Watch Video Solution**

**39.** Adipose tissue forms

- A. only during fetal development
- B. throughout life
- C. mainly during fetal development and the first postpartum year
- D. mainly at puberty

**Answer: B**



**Watch Video Solution**

**40.** To which one of the following categories does adipose tissue belong?

A. Epithelial

B. Connective

C. Muscular

D. Neural

**Answer: B**



**Watch Video Solution**

**41.** Elastin is found in

A. yellow fibres of areolar tissue



B. adipose tissue

C. cartilage

D. spongy bone

**Answer: A**



**Watch Video Solution**

**42. Yellow fibres are made up of**

A. ossein

B. elastin

C. choudrin

D. collagen

**Answer: B**



**Watch Video Solution**

**43. Wharton's jelly**

A. is found in embryo

B. contains collagen fibres

C. humnn eye

D. All of these

**Answer: D**



**Watch Video Solution**

**44.** Which epithelium is present in posterior part of iris?

A. Neurosensory

B. Transitional

C. Pigmented

D. Glandular

**Answer: C**



**Watch Video Solution**

**45.** Thousands of years old mummies are still in their condition as they were before due to the non-destruction of

- A. yellow elastin fibres
- B. white elastin fibres
- C. collagen fibres
- D. veins

**Answer: A**



**Watch Video Solution**

**46.** Which of the following is not a specialised type of cell found in connective tissues?

- A. Lymphocyte
- B. Macrophage
- C. Goblet cell
- D. Mast cell

**Answer: C**



Watch Video Solution

47. An infection would most likely increase phagocytic activity in

- A. elastic tissue
- B. transitional tissue
- C. adipose tissue
- D. reticular tissue

**Answer: D**



Watch Video Solution

**48.** Phagocytosis is a function of which type of connective tissue,?

A. Cartilage

B. Loose fibrous

C. Elastic

D. Reticular

**Answer: D**



**Watch Video Solution**

**49.** Cartilage is a non-vascular connective tissue having matrix of

A. elastin

B. keratin

C. fibrin

D. chondrin

**Answer: D**



**Watch Video Solution**

**50.** Matrix of cartilage is secreted by



A. chondrocytes

B. chondroblasts

C. osteocytes

D. histiocytes

**Answer: A**



**Watch Video Solution**

**51. Supportive connective tissue means**

A. tendon

B. cartilage and bone

C. ligament

D. blood and lymph

**Answer: B**



**Watch Video Solution**

**52. Which of the following lacks blood supply?**

A. Bone

B. Connective tissue

C. Cartilage

D. None of these

**Answer: C**



**Watch Video Solution**

**53.** Hyoid apparatus is composed of

A. hyaline cartilage

B. fibrous cartilage

C. calcified cartilage

D. elastic cartilage

**Answer: A**



**Watch Video Solution**

**54.** In hyaline cartilage, matrix is

A. granular

B. transparent

C. agranular

D. semitransparent

**Answer: B**



**Watch Video Solution**

**55. Calcified cartilage is**

A. soft

B. hard

C. fibrous

D. None of these

**Answer: B**



**Watch Video Solution**

 [Watch Video Solution](#)

**56.** Tendons are made up of

A. yellow fibrous connective tissue

B. adipose tissue

C. collagen

D. areolar tissue

**Answer: C**



[Watch Video Solution](#)

57. Intervertebral discs are composed of

- A. hyaline cartilage
- B. elastic cartilage
- C. fibrous cartilage
- D. None of these

**Answer: C**



**Watch Video Solution**

58. Ligament is made of

- A. elastic tissue
- B. areolar tissue
- C. fibrous tissue
- D. adipose tissue

**Answer: A**



**Watch Video Solution**

**59. Tendon**

- A. is made of fibrous tissue



B. connect bone with muscles

C. connect bone with bone

D. Both (a) and (b)

**Answer: D**



**Watch Video Solution**

**60.** White fibrous tissues are present at the joints of

A. cranial bones

B. humerus and glenoid cavity

C. femur and acetabulum

D. carpals and metacarpals

**Answer: A**



**Watch Video Solution**

**61. Bones and blood are**

A. mesodermal in origin

B. endodermal in origin

C. Both (a) and (b)

D. ectodermal in origin

**Answer: A**



**Watch Video Solution**

**62.** Bones of old persons are brittle and fracture more readily occur because they contain more

A. lacunae

B. organic matter

C. inorganic matter

D. bone marrow

**Answer: C**



**Watch Video Solution**

**63.** The process of bone formation is called

- A. ossification
- B. calcification
- C. calcination
- D. None of these

**Answer: A**



**Watch Video Solution**

 [Watch Video Solution](#)

64. Matrix of bone is arranged

- A. as thin plates lamellae
- B. not in concentric layers
- C. matrix forms the ground substance
- D. None of the above

**Answer: A**



[Watch Video Solution](#)

**65.** In the body, the membrane surrounding the bone is known as

- A. periosteum
- B. endosteum
- C. perichondrium
- D. chondrocytes

**Answer: A**



**Watch Video Solution**

**66.** End of long bones are covered with

A. muscles

B. cartilage

C. adipose tissue

D. bone marrow

**Answer: B**



**Watch Video Solution**

**67.** Calcium phosphate is the principal chemical constituent of

A. mammalian bone

B. fibrous cartilage

C. elastic cartilage

D. hyaline cartilage

**Answer: A**



**Watch Video Solution**

**68.** What happens to the unused haem of haemoglobin after blood formation?

A. It leads to Rauleau formation

B. It leads to formation of RBC



C. It converts into bile pigment

D. None of the above

**Answer: C**



**Watch Video Solution**

**69.** Erythropoiesis in foetus occurs in

A. bone marrow

B. spleen

C. liver

D. lymph nodes

**Answer: C**



**Watch Video Solution**

**70.** Serum is

A. whole blood

B. blood minus clotting factor

C. plasma minus clotting factor

D. blood minus blood cells

**Answer: C**



**Watch Video Solution**

**71.** Which of the following is absent in plasma of mammalian blood?

- A.  $\alpha$ ,  $\beta$  and  $\gamma$  globulin
- B. Prothrombin
- C. Blood cells
- D. Fibrinogen and inorganic ions

**Answer: C**



[Watch Video Solution](#)

72. Plasma is an example of

A. muscle tissue

B. epithelial tissue

C. nervous tissue

D. connective tissue

**Answer: D**



[Watch Video Solution](#)

73. Which of the following substances if introduced in the blood stream, would cause coagulation at the site of its introduction?

- A. Dicumarol
- B. Hirudin
- C. Heparin
- D. Thromboplastin

**Answer: D**



**Watch Video Solution**

74. Which of the following type of cells lack nucleus?

A. RBC

B. Neutrophils

C. Eosinophils

D. Erythrocytes

**Answer: A**



**Watch Video Solution**

75. RBCs that lack nuclei when they are mature present in

A. frog

B. lizard

C. man

D. birds

**Answer: C**



**Watch Video Solution**

**76.** In man , the number of R.B.C. per cubic mm of blood is

A. 1-3 million

B. 5 -5,4 million

C. less than one million, but more than 50 thousand

D. less than 50 thousand

**Answer: B**



**Watch Video Solution**



77. Which of the following is a compound alveolar gland?

- A. gastric gland in stomach
- B. parotid salivary gland
- C. mammary gland of prototherians
- D. sebaceous glands

**Answer: B**



**Watch Video Solution**

**78.** Which of the following cells does not exhibit phagocytic activity ?

A. Monocytes

B. Neutrophils

C. Basophils

D. Macrophage

**Answer: C**



**Watch Video Solution**

**79.** Which of the following layer is responsible for the difference in the body countours of male and female?

- A. Plasma membrane
- B. The panniculus adiposus
- C. Basement membrane
- D. Canaliculi

**Answer: B**



**Watch Video Solution**

**80.** Life span of WBCs in humans is

A. 100 days

B. 50 days

C. 7 days

D. None of these

**Answer: C**



**Watch Video Solution**

**81.** Which one of the following blood cells is involved in antibody production ?

A. B-lymphocytes

B. T-lymphocytes

C. RBC

D. neutrophils

**Answer: A**



**Watch Video Solution**

82. Which blood corpuscle is largest in diameter ?

A. Erythrocyte

B. Monocytc

C. Neutrophil

D. Lymphocyte

**Answer: B**



**Watch Video Solution**

83. Formulation of antibodies is the function of

A. monocytes

B. Neutrophils

C. basophils

D. lymphocytes

**Answer: D**



**Watch Video Solution**

**84.** Agranulocytes responsible for immune response of the body are

A. basophils

B. neutriohils

C. eosinophils

D. lymphocytes

**Answer: D**



**Watch Video Solution**

**85. Mark the odd one.**

A. Monocytes

B. Eosinophils



C. Neutrophils

D. Basophils

**Answer: A**



**Watch Video Solution**

**86.** Which is the most abundant among WBCs of human blood?

A. Monocyte

B. Lymphocyte

C. Thrombocyte

D. Neutrophils

**Answer: D**



**Watch Video Solution**

**87.** Formulation of platelets is known as

A. haemopoicis

B. thrombopoicis (haematopoicis)

C. haemolysis

D. None of the above

**Answer: B**



**Watch Video Solution**

**88.** Blood platelets are

- A. nucleated
- B. nucleus is many lobed
- C. nucleus is very small
- D. denucleated

**Answer: D**



**Watch Video Solution**

 [Watch Video Solution](#)

**89.** The vitamin, which is essential for blood clotting is

A. vitamin-A

B. vitamin-B

C. vitamin-C

D. vitamin-K

**Answer: D**



[Watch Video Solution](#)

**90.** Tissue (interstitial) fluid would most likely be found in

A. loose connective tissue

B. nervous tissue

C. adipose tissue

D. bone tissue

**Answer: A**



**Watch Video Solution**

**91.** Which type of rissue forms the framework of the external ear?

- A. Epithelial
- B. Connective
- C. Nervous
- D. Muscular

**Answer: D**



**Watch Video Solution**

**92.** Which of the following is not a connective tissue ?

A. Bone

B. Cartilage

C. Blood

D. Muscles

**Answer: D**



**Watch Video Solution**

**93.** The muscle cells are called as

A. myofibrils

B. chondrocytes

C. myocytes

D. osteocytcs

**Answer: C**



**Watch Video Solution**

**94.** The cytoplasm of muscle fibre is known as :



A. neuroplasm

B. protoplasm

C. germplasm

D. sarcoplasm

**Answer: D**



**Watch Video Solution**

**95.** Certain tissues in the body, like muscle are more active than others. Which organelles are

expected to be more numerous in cells of such tissues?

A. Nuclei

B. Centrioles

C. Lysosomes

D. Mitochondria

**Answer: D**



**Watch Video Solution**

**96.** In a vertebrate which germ layer forms the skeletal muscles ?

A. Ectoderm

B. Endoderm

C. Mesoderm

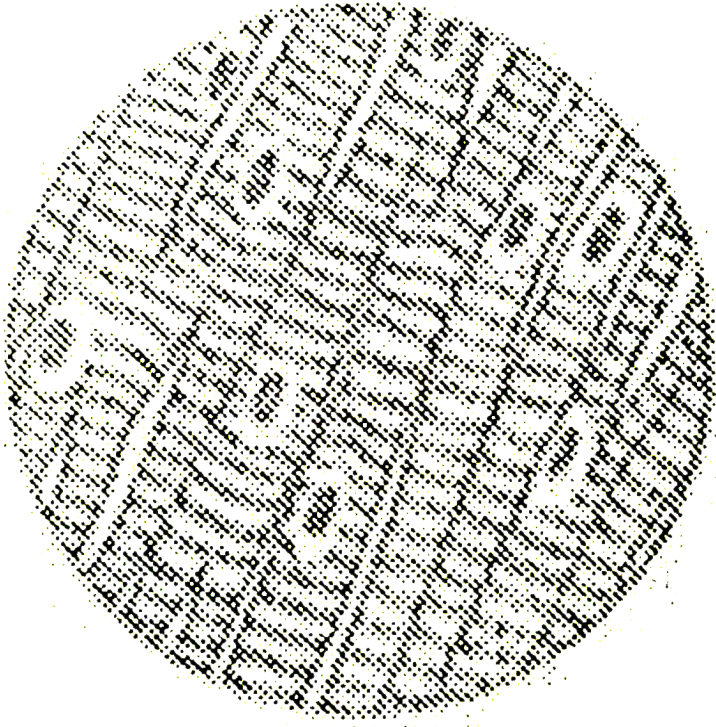
D. Both (a) and (c )

**Answer: C**



**Watch Video Solution**

97. Identifu the type of muscle in the given figure.



- A. Smooth muscle
- B. Unstriated muscle
- C. Cardiac muscle

D. None of these

**Answer: C**



**Watch Video Solution**

**98.** In which of the following fibres nodes and internodes are absent?

A. Medullated nerve fibres

B. Non-medullated nerve fibres

C. Both (a) and (b)

D. None of the above

**Answer: B**



**Watch Video Solution**

**99.** which of the following tissue originates exclusively from the ectoderm of the embryo?

- A. Muscular tissue
- B. Epithelial tissue
- C. Nervous tissue
- D. Connective tissue

**Answer: C**



Watch Video Solution

**100.** Nerve fibres differ from the muscle fibres in having

A. dendrites

B. sarcolemma

C. myofibrils

D. striations

**Answer: A**



Watch Video Solution

**101.** Which type of tissue changes the diameter of a blood vessel?

- A. Epithelial
- B. Connective
- C. Muscular
- D. Nervous

**Answer: C**



**Watch Video Solution**



**102.** Choose the odd pair out in the following :

A. Areolar connective tissue - Collagen

B. Epithelium - Keratin

C. Ncnron - Melanin

D. Muscle fibre - Actin

**Answer: C**



**Watch Video Solution**

**103.** Neurons

A. act as biological transducers

B. may be sensory or motor

C. cannot regenerate or divide

D. All of the above

**Answer: D**



**Watch Video Solution**

**104.** Nissl granules found in cytoplasm of a neuron and having affinity for basic dyes are composed of

A. DNA

B. RNA

C. proteins

D. amino acids

**Answer: B**



**Watch Video Solution**

**105.** Which of the following cells does not divide once but only differentiate?

A. Interstitial cells

B. Nerve cells

C. Blood cells

D. Glial cells

**Answer: B**



**Watch Video Solution**

**106.** Which of the following is false about glial cells?

A. Modified glial cell called Schwann cell

secretes myelin sheath

B. Assist in nourishment of neurons

C. Modulates nerves impulses

D. Secrete neurotransmitters that facilitate synaptic transmission

**Answer: D**



**Watch Video Solution**

**107.** Identify the correct statement.

- A. Majority of adult tissues originate from endoderm
- B. Multipolar neurons are found in nervous system of adult vertebrates
- C. Nodules of Ranvier are characteristic of non-myelinated neurons
- D. Lungs are lined by mesothelial cells

**Answer: B**



**Watch Video Solution**

**108.** What is false about neurons?

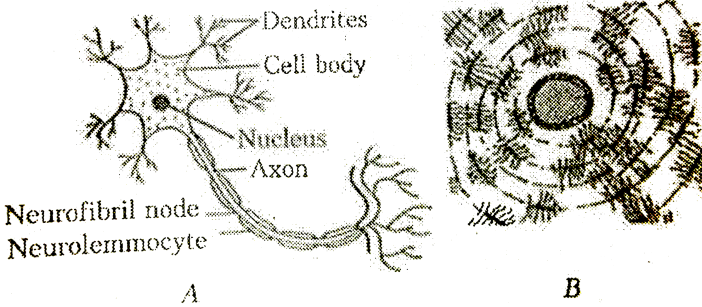
- A. Myelinated neuron contain Schwann cell and nodes of Ranvier
- B. Dendrite represent the efferent part of a neuron
- C. Nissl's granules are made up of histones
- D. Afferent neurons conduct impulses from brain to effector organs

**Answer: C**



**Watch Video Solution**

109. Identify the animal tissues in the given figure.



A. A- Nervous tissue, B-Muscular tissue

B. A-Nervous tissue, B-Epithelial tissue

C. A-Nervous tissue, B-Connective tissue

D. A-Nervous tissue, B-Cardiac tissue

**Answer: C**





Watch Video Solution

**110.** Which statements is not true about nerve fibres in mammals?

A. All nerve fibres are non-medullated

B. Afferent (sensory) nerves transmit impulses to brain and spinal cord

C. Efferent (motor) nerve carry signals from brain and spinal cord to effector organs

D. Mixed nerves carry signals in both directions

**Answer: A**



**Watch Video Solution**

**111.** Which of the following statements about muscle is true?

A. Smooth muscle is multinucleate

B. Differentiated smooth muscle cells retain the ability to undergo cell division

C. Cardiac muscle is voluntary

D. None of the above

**Answer: B**



**Watch Video Solution**

**112.** Characteristics of smooth muscle fibres are

A. spindle-shaped, unbranched, unstriated,  
uninucleate and involuntary

B. spindle-shaped, unbranched, unstriated,  
multinucleate and involuntary

C. cylindrical, unbranched, unstriated,  
multinucleate and involuntary

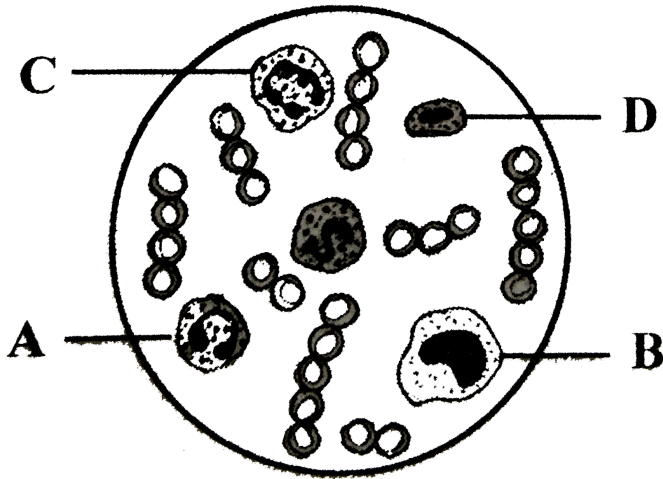
D. cylindrical, unbranched, striated,  
multinucleate and voluntary

**Answer: A**



**Watch Video Solution**

113. Study the given figure and identify the cells labelled as A, B, C and D



A. A-Eosinophil B-Erythrocyte, C-Neutrophil

B. A-Eosinophil, B-Lymphocyte, C-Neutrophil

C. A-Erythrocyte, B-Basophil, C-Neutrophil

D. A-Eosinophil, B-Monocyte, C-Neutrophil

**Answer: D**



**Watch Video Solution**

**114.** The main difference between bone and cartilage is

A. a bone is vascular while cartilage is avascular

B. bones are made up of chondroblasts and cartilage is of osteoblasts

C. bones reduce friction at joints, cartilage provides protection

D. bones reduce friction at joints, cartilage provides protection

**Answer: A**



**Watch Video Solution**

**115.** Identify the pair that does not match.



**View Text Solution**

**116.** Which of the statement is incorrect?

- A. Cartilage contain chondrin which makes the matrix
- B. Matrix of bone is formed by ossein
- C. Haversian canal system is characteristic of mammalian bone
- D. Volkmann's canal connect the lacuna present in the cartilage

**Answer: D**



**Watch Video Solution**



**117.** Select the correctly matched pair.

A. Chondroblast - Form chondrocyte in cartilage

B. Elastic cartilage - Pubic symphysis

C. Fibrous cartilage - Pinna of ear

D. Hyaline cartilage - Intervertebral disc

**Answer: A**



**Watch Video Solution**

**118.** Identify the wrong statement.

- A. Tendon connect skeletal muscle with bones
- B. Ligaments connect bones with bones
- C. Adipose tissue store fats
- D. Matrix of cartilage is filled with mast cells  
and macrophages

**Answer: D**



**Watch Video Solution**

**119.** Which statement best describes the connective tissue?

A. It is derived from endoderm and secretes metabolic substances

B. It is derived from mesoderm and conducts impulses

C. It is derived from mesoderm and contains abundant matrix

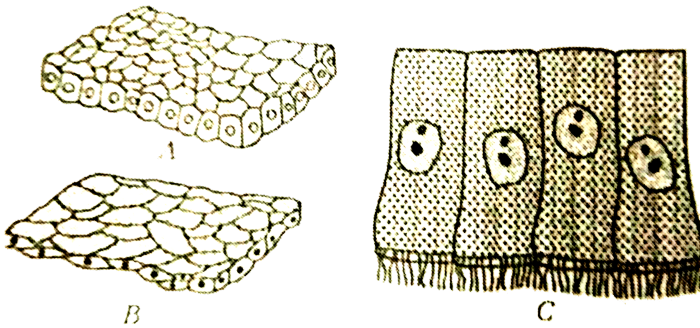
D. It is derived from ectoderm and is usually layered

Answer: C



Watch Video Solution

120. Identify A, B and C in the following figures of simple epithelium tissue.



A. A-Ciliated columnar, B-Squamous, C-Cuboidal

B. A-Cuboidal, B-Squamous, C-Ciliated  
columnar

C. A-Squamous. B-Ciliated columnar, C-  
Cuboidal

D. A-Ciliated columnar, B-Cuboidal, C-  
Squamous

**Answer: B**



**Watch Video Solution**

**121.** Which word combination applies to stratified squamous epithelium?

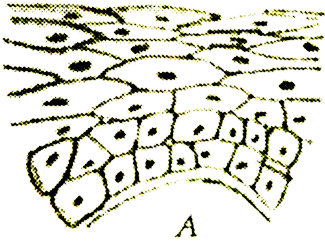
- A. Mesoderm - Calcification
- B. Ectoderm - Keratinisation
- C. Mesoderm - Ossification
- D. Endoderm - Cornification

**Answer: B**



**Watch Video Solution**

122. Identify the animal tissues in given figures.



A. A-Connective tissue, B-Muscular tissue

B. A-Epithelial tissue, B-Muscular tissue

C. A-Muscular tissue, B-Connective tissue

D. A-Epithelial tissue, B-Connective tissue

**Answer: D**



**Watch Video Solution**

**123.** Find out the wrongly matched pair

A. Squamous epithelium - Skin of frog

B. Columnar epithelium - Peritoneum of body  
cavity

C. Ciliated epithelium - Bronchioles

D. Stratified cuboidal epithelium - Oesophagus

**Answer: B**



**Watch Video Solution**



**124.** Which of the following is/are false statement?

A. Compound squamous epithelium lies in the pancreatic duct of human

B. Stratified epithelial lining is found in intestine

C. The plasma membrana of intestinal cells are modified into microvilli

D. Both (a) and (b)

**Answer: D**



Watch Video Solution

**125.** Select the correctly matched pair.

A. Cuboidal epithelium - Blood vessels

B. Columnar epithelium - Uterine  
endometrium

C. Simple epithelium - Nasal cavity





D. Stratified epithelium - Thyroid follicles

**Answer: C**



Watch Video Solution

126. Select the option having all the correct characteristics.

	Structure	Percentage of WBCs	Function
A.	(a) 	0.3 - 0.5	Phagocytic
B.	(b) 	0.5 - 10	Secrete histamine and serotonin
C.	(c) 	30 - 40	Defence against parasites
D.	(d) 	30 - 40	Allergic reactions

Answer: B



View Text Solution

1. In pseudostratified columnar epithelium, the

I. epithelium appears as multilayered.

II. cells are of more than one type .

III. longer cells extend upto the free surface, while the short cells do not reach the free surface.

IV. membrane is multilayered, but appears single layered.

Choose the option with the correct statements.

A. I, II and III

B. I and III

C. II and IV

D. All of these

**Answer: A**



**Watch Video Solution**

2. Adipose tissue is found in

I. hump of camel.

II. fibrous capsules of penis.

III. yellow bone marrow.

#### IV. Vitreous body of eyeballs.

Choose the option with the correct statements.

A. I and IV

B. II and III

C. I and III

D. II and IV

**Answer: C**



**Watch Video Solution**

3. Which of the following are types of granulocytes'?

I. Neutrophils II. Acidophils

III. Lymphocytes IV. Monocytes

Choose the option with the correct: statements.

A. I and II

B. II and III

C. III and IV

D. All of these

**Answer: A**





4. Which of the following statements is/are correct?

I. Striped muscles are in the form of bundles of cells.

II. The Pal muscle fibres, which are called fasciculi.

III. Skeletal muscles form the largest tissue in the body.

IV. Cardiac muscles in the embryo are originated from mesenchyma cell.

Choose the option with the correct statement(s).



A. Only I

B. II and III

C. I, II and III

D. II and IV

**Answer: C**



**Watch Video Solution**

## 5. Neurons

I. are considered as the shortest cells of the body.

II. arise in the embryo from neuroblast cells.

III. contain cyton, which occur in white matter of central nervous system.

IV. are without centrosome.

Choose the option with the correct statements

A. I and II

B. II and IV

C. III and IV

D. None of these

**Answer: B**



**Watch Video Solution**

## 6. Red blood cells

I. of amphibians are largest among vertebrates.

II. of mammals are smallest among vertebrates.

III. of mammals are biconcave and nucleated.

IV. are seen in all invertebrates and vertebrates.

Choose the option with the correct statements.

A. I, II and III

B. I and II

C. III and IV

D. II and IV

**Answer: B**



Watch Video Solution

7. Read the following statements and select the correct option

(i) Blood cells secrete fibres of structural proteins called collagen and elastin

(ii) Neuroglial cells protect and support the nephrons

(iii) Osteocytes are present in spaces called lacunae

(iv) Striated muscle fibres are bundled together in

a parallel fashion

(v) Biceps are involuntary and striated.

A. III and IV

B. I, II and IV

C. II and IV

D. I and IV

**Answer: B**



**Watch Video Solution**

8. From the given set of statements, identify the statements as true and false.

I. Sarcomere is the structural and functional unit of striated muscle fibres.

II. Muscles present in thigh are striated and voluntary.

III. EDTA is the anticoagulant used in blood cell counting.

IV. In mammals nervous tissue of brain have the least capacity of regeneration.

A. I is true, II, III and IV are false

B. II and III are true, I and IV are false

C. I and IV are true, II and III are false

D. All are true

**Answer: D**



**Watch Video Solution**

**9.** Read the statements carefully and identify the incorrect ones.

I. The skeletal tissue consists of organic matter called as chondroblast.

II. If a femur is kept in dilute HCl for three days it becomes brittle.

III. Haversian system is found in pigeon.

IV. Hyaline cartilage is present at the end of long bones.

A. I and II

B. I, II and III

C. Only III

D. III and IV

**Answer: B**



**Watch Video Solution**



## 10. Match the following Columns.

Column I	Column II
A. Neutrophil	1. Single large nucleus
B. Eosinophil	2. Usually trilobed nucleus
C. Basophil	3. Kidney-shaped nucleus
D. Lymphocyte	4. Multilobed nucleus
E. Monocyte	5. Bilobed nucleus

A. A B C D E  
4 1 3 5 2

B. A B C D E  
2 5 1 4 3

C. A B C D E  
4 5 2 1 3

D. A B C D E  
2 4 5 3 1

**Answer: C**



**Watch Video Solution**

## 11. Match the following Columns.

Column I	Column II
A. Pseudostratified ciliated columnar epithelium	1. Trachea and large bronchi
B. Stratified squamous epithelium	2. Lining the oral cavity
C. Transitional epithelium	3. Wall of urinary bladder
D. Simple ciliated columnar epithelium	4. Lining the respiratory tract

A. A B C D  
1 2 3 4

B. A B C D  
3 1 2 4

C. A B C D  
4 3 1 2

D. A B C D  
2 4 1 3

**Answer: A**



## 12. Match the following Columns.

Column I		Column II	
A.	Simple acinar gland	1.	Parotid gland
B.	Compound tubular gland	2.	Seminal vesicle
C.	Compound tubulo-acinar gland	3.	Intestinal gland
D.	Simple tubular gland	4.	Liver
E.	Compound acinar gland	5.	Mammary gland

A.    A   B   C   D   E  
      2   3   4   1   5

B.    A   B   C   D   E  
      4   2   1   3   5

C.    A   B   C   D   E  
      3   1   2   4   5

D.    A   B   C   D   E  
      5   4   3   2   1

Answer: A



Watch Video Solution

13. Match the following Columns.

**Column I**

- A. Adipose tissue
- B. Stratified epithelium
- C. Hyaline cartilage
- D. Fluid connective tissue

**Column II**

- 1. Nose
- 2. Blood
- 3. Skin
- 4. Fat storage

- A. A B C D  
1 2 3 4
- B. A B C D  
4 3 1 2
- C. A B C D  
3 1 4 2
- D. A B C D  
2 1 4 3

**Answer: B**



**Watch Video Solution**

**14.** Assertion Connective tissue contains a large amount of non-living intercellular or extracllular matrix.

Reason Intercellular substance is usually made up of protein fibres.

A. Both Assertion and Reason are true and

Reason is a correct explanation of the

Assertion

B. Both Assertion and Reason are true, but Reason is not the correct explanation of Assertion

C. Assertion is true, but Reason is false

D. Assertion is false, but Reason is true

**Answer: B**



**Watch Video Solution**

**15.** Assertion Pleura and pericardium are serous membranes.

Reason These membranes prevent friction between surface of different organs.

A. Both Assertion and Reason are true and

Reason is a correct explanation of the

Assertion

B. Both Assertion and Reason are true, but

Reason is not the correct explanation of

Assertion

C. Assertion is true, but Reason is false

D. Assertion is false, but Reason is true

**Answer: A**



**Watch Video Solution**

**16.** Assertion Epithelium of mucous membrane have mucous glands.

Reason Mucus provides protection to various internal organs from drying out.

A. Both Assertion and Reason are true and

Reason is a correct explanation of the

Assertion



B. Both Assertion and Reason are true, but Reason is not the correct explanation of Assertion

C. Assertion is true, but Reason is false

D. Assertion is false, but Reason is true

**Answer: A**



**Watch Video Solution**

17. Assertion White collagen fibres and yellow elastin fibres are two types of areolar fibres.

Reason Collagen fibres are found at the site of injury for repair.

A. Both Assertion and Reason are true and

Reason is a correct explanation of the

Assertion

B. Both Assertion and Reason are true, but

Reason is not the correct explanation of

Assertion

C. Assertion is true, but Reason is false

D. Assertion is false, but Reason is true

**Answer: B**



**Watch Video Solution**

**18. Assertion:** WBCs accumulate at site of wounds by diapedesis.

**Reason:** It is squeezing of leucocytes from endothelium.

A. Both Assertion and Reason are true and

Reason is a correct explanation of the

Assertion

B. Both Assertion and Reason are true, but Reason is not the correct explanation of Assertion

C. Assertion is true, but Reason is false

D. Assertion is false, but Reason is true

**Answer: B**



**Watch Video Solution**

**19.** Assertion : Histamine is related with allergic and inflammatory reactions

Reason : Histamine is a vasodilator

A. Both Assertion and Reason are true and

Reason is a correct explanation of the

Assertion

B. Both Assertion and Reason are true, but

Reason is not the correct explanation of

Assertion

C. Assertion is true, but Reason is false

D. Assertion is false, but Reason is true

**Answer: B**





Watch Video Solution

Chapter Exercises Medical Entrances Gallery  
Collection Of Questions Asked In Neet Various  
Medical Entrance Exams

1. Choose the correct statements with reference to hyaline cartilage

(a) It is bluish white translucent and glass like cartilage

(b) Matrix shows collagen fibres and elastin fibres

(c) It forms embryonic endoskeleton in cyclostomes and adult cartilage fishes

(d) It is the strongest cartilage with perichondrium.

A. I, II and IV

B. II and III

C. II, III and IV

D. I and III

**Answer: D**



**Watch Video Solution**

**2. Smooth muscles are**

- A. involuntary, fusiform, non- striated
- B. voluntary, multinucleate, cylindrical
- C. involuntary, cylindrical, striated
- D. voluntary, spindle-shaped, uninucleate

**Answer: A**



**Watch Video Solution**

**3. Which type of tissue correctly matches with its location ?**

- |    | Tissue             | Location |
|----|--------------------|----------|
| A. | (a) Areolar tissue | Tendons  |



B.

	Tissue	Location
(b)	Transitional epithelium	Tip of nose

C.

	Tissue	Location
(c)	Cuboidal epithelium	Lining of stomach

	Tissue	Location
D. (d)	Smooth muscle	Wall of intestine

**Answer: D**



**Watch Video Solution**

4. Assertion (A). In cardiac muscles , impulses are transmitted rapidly .

Reason (R) . Gap junctions allow quick passage of ions from one cell to the other.

A. Both A and R are true and R is the correct explanation of A

B. Both A and R are true, but R is not the correct explanation of A

C. A is true, but R is false

D. A is false, but R is true

**Answer: A**



**Watch Video Solution**

5. The tissue covering the external surface of animal and internal surface of visceral organs is

- A. adipose tissue
- B. connective tissue
- C. cartilaginous tissue
- D. epithelial tissue

**Answer: D**



**Watch Video Solution**

6. All the following are examples of connective tissue except

A. tendons

B. ligaments

C. muscle

D. adipose tissue

**Answer: C**



**Watch Video Solution**

7. Wharton's jelly present in umbilical cord is an example of

- A. adipose tissue
- B. mucus connective tissue
- C. areolar tissue
- D. elastic connective tissue

**Answer: B**



**Watch Video Solution**

8. Skeletal muscle fibre is a "Syncytium" which means it is

- A. made up of many fibres
- B. made up of many proteins
- C. long and slender ·
- D. multinucleated

**Answer: D**



**Watch Video Solution**

9. Choose the wrong statement with reference to smooth muscles

- A. Myofibrils show alternate dark and light bands
- B. They are spindle-shaped uninucleate cells
- C. Their contractions are under the control of autonomic nervous system
- D. They exhibit prolonged contractions

**Answer: A**



**Watch Video Solution**

**10.** Which one is a specialised connective tissue among these

A. Adipose tissue

B. Bone

C. Areolar tissue

D. Fibroblasts

**Answer: B**



**Watch Video Solution**



11. Which option is correct for the formation of 'Intrinsic factor-X activator complex for blood coagulation

A. Inactivated Christmas factor + AHG +  
Phospholipids +  $Ca^{2+}$

B. Activated Christmas factor + AHG +  
Phospholipids +  $Ca^{2+}$

C. Convertin + AHG +  $Ca^{2+}$  + FSF

D. Phospholipid + Protein complex +  
Proconvertin

**Answer: B**



**Watch Video Solution**

**12. Choose the correctly matched pair :**

A. Moist surface of buccal cavity - Glandular epithelium

B. Tubular parts of nephrons, - Cuboidal epithelium

C. Inner surface of bronchioles - Squamous epithelium

D. Inner lining of salivary ducts - Ciliated epithelium

**Answer: B**



**Watch Video Solution**

**13.** Choose the correctly matched pair

A. Adipose tissue - Dense connective tissue

B. Areolar tissue - Loose connective tissue

C. Cartilage - Loose connective tissue

## D. Tendon - Specialised connective tissue

**Answer: B**



**Watch Video Solution**

**14.** The inner lining of ducts of sweat glands and pancreatic duct is formed of epithelium

A. pseudostratified

B. transitional

C. stratified cuboidal

D. stratified non-keratinised squamous

**Answer: C**



**Watch Video Solution**

**15.** Read the following statements and choose the correct answer.

- (i) Gap junctions cement adjacent cells together.
- (ii) Areolar tissue contains fibroblasts , macrophages and mast cells.
- (iii) Tight junctions facilitate the cells to communicate with each other
- (iv) Adhering junctions help to stop substances from leaking across tissues

(v) Cells of connective tissue except blood secrete fibres of structural proteins called elastin.

A. I, II and III

B. I, III and IV

C. III and V

D. I, II and V

**Answer: D**



**Watch Video Solution**

**16.** Dense regular connective tissue is present in

- A. ligament and tendon
- B. joint capsule and Wharton's jelly
- C. periosteum and endosteum
- D. pericardium and heart valves

**Answer: A**



**Watch Video Solution**

**17. The lining of intestine and kidneys in human is**

- A. keratinised

B. brush border

C. ciliated

D. None of the above

**Answer: B**



**Watch Video Solution**

**18.** Vagina, oesophagus, urethra contain which type of tissue?

A. Stratified squamous epithelium

B. Simple squamous epithelium



C. Ciliated epithelium

D. Columnar epithelium

**Answer: A**



**Watch Video Solution**

**19.** The outer covering of cartilage is called

A. peritoneum

B. periosteum

C. endosteum

D. perichondrium

**Answer: D**



**Watch Video Solution**

**20.** Inner surface of bronchi, bronchioles and fallopian tubes is lined by

- A. cubical epithelium
- B. columnar epithelium
- C. squamous epithelium
- D. ciliated epithelium

**Answer: D**



**Watch Video Solution**

**21. Bone marrow is absent in**

A. reptiles

B. amphibians

C. fishes

D. birds

**Answer: D**



**Watch Video Solution**

 Watch Video Solution

**22.** Cardiac muscle is found in

- A. pericardium
- B. endocardium
- C. myocardium
- D. peritoneum

**Answer: C**



Watch Video Solution

23. Debove's membrane is a layer of

- A. muscular tissue cells
- B. epithelial tissue cells
- C. connective tissue cells
- D. None of these

**Answer: C**



**Watch Video Solution**

24. The type of tissue lining the nasal passage, bronchioles and Fallopian tubes is

A. columnar, ciliated epithelium

B. cuboidal epithelium

C. neurosensory epithelium

D. germinal epithelium

**Answer: A**



**Watch Video Solution**

**25.** The cell membranes of adjacent cells are fused at this cell junction

A. macula adherens

B. zonula adherens

C. zonula occludens

D. nexus

**Answer: C**



**Watch Video Solution**

**26.** Keratinized dead layer of skin is made of

A. Stratified squamous epithelium

B. simple cuboidal epithelium

C. simple columnar epithelium

D. stratified columnar epithelium

**Answer: A**



**Watch Video Solution**

**27.** The cavities of alveoli of lungs are lined by

A. cuboidal epithelium

B. columnar epithelium

C. stratified cuboidal epithelium



D. squamous epithelium

**Answer: D**



**Watch Video Solution**

**28.** Fibroblasts, macrophages and mast cells are seen in

- A. epithelial tissue
- B. connective tissue
- C. skeletal muscle tissue
- D. smooth muscle tissue

**Answer: B**



**Watch Video Solution**

**29. Agranulocytes are**

- A. lymphocytes and monocytes
- B. eosinophils and basophils
- C. lymphocytes and eosinophils
- D. basophils and monocytes

**Answer: A**



**Watch Video Solution**

 [Watch Video Solution](#)

**30.** Haemoglobin is

- A. an oxygen carrier in human blood
- B. a protein used as food supplement
- C. an oxygen scavenger in root nodules
- D. a plant protein with high lysine content

**Answer: A**



[Watch Video Solution](#)

**31.** The kind of epithelium which forms inner walls of blood vessels is

A. squamous epithelium

B. columnar epithelium

C. ciliated epithelium

D. cuboidal epithelium

**Answer: A**



**Watch Video Solution**

**32.** Which ones have round and biconcave shape

A. White blood cells

B. Red blood cells

C. Columnar epithelial cells

D. Nerve cells

**Answer: B**



**Watch Video Solution**

**33.** Histamine, serotonin and heparin are secreted  
by

A. lymphocytes

B. monocytes

C. neutrophils

D. basophils

**Answer: D**



**Watch Video Solution**

**34.** Which one of the following human cells does not contain mitochondria

A. Nerve cell

B. Red blood cells

C. Liver cell

D. White blood cells

**Answer: B**



**Watch Video Solution**

**35. They are phagocytic in nature**

A. Neutrophil, monocyte and basophil

B. Neutrophil, monocyte and macrophage

C. Neutrophil, basophil and macrophage

D. Acidophil, basophil and lymphocyte

**Answer: B**



**Watch Video Solution**

**36.** Tendons and ligaments are a kind of

A. muscular tissue

B. connective tissue

C. epidermal tissue

D. nervous tissue



**Answer: B**



**Watch Video Solution**

**37. Blood clotting corpuscle is**

A. thrombocyte

B. monocyte

C. lymphocyte

D. erythrocyte

**Answer: A**



**Watch Video Solution**

 [Watch Video Solution](#)

**38.** Which of the following serve as the anchoring junctions between the cells ?

A. Tight junctions

B. Gap junctions

C. Desmosomes

D. Nexuses

**Answer: C**



[Watch Video Solution](#)

**39.** The cell junctions called tight, adhering and gap junctions are found in :

- A. muscular tissue
- B. connective tissue
- C. epithelial
- D. neural tissue

**Answer: C**



**Watch Video Solution**

**40.** The kind of tissue that forms the supportive structure in our pinna (external ears) is also found in -

- A. vertebrae
- B. nails
- C. ear ossicles
- D. tip of the nose

**Answer: D**



**Watch Video Solution**

**41.** Blood is a kind of

- A. areolar tissue
- B. connective tissue
- C. fluid connective tissue
- D. reticular connective tissue

**Answer: C**



**Watch Video Solution**

42. Epimysium perimysium and endomysium occur in

A. nerve

B. blood vessel

C. striated muscle

D. uterus

**Answer: C**



**Watch Video Solution**

**43.** Endothelium is made up of

- A. squamous cells
- B. cuboidal cells
- C. columnar cells
- D. stratified epithelium

**Answer: A**



**Watch Video Solution**

**44.** Bipolar neurons occur in

A. vertebrate embryos

B. retina of eye

C. brain and spinal cord

D. skeletal muscles

**Answer: B**



**Watch Video Solution**

**45. Both RBCs and WBCs are formed in the**

A. spleen



B. liver

C. bone marrow

D. kidney

**Answer: C**



**Watch Video Solution**

**46.** Non-cellular layer that connects inner surface of the epithelial tissue to the connective tissue is

A. endodermis

B. cuticle

C. connective tissue

D. basement membrane

**Answer: D**



**Watch Video Solution**

**47.** In thyroid follicle which type of epithelial tissue is present ?

A. Squamous

B. Cuboidal

C. Transitional

D. Columnar

**Answer: C**



**Watch Video Solution**

**48.** Intervertebral disc consists of a shock absorber connective tissue known as

A. hyaline cartilage

B. elastic cartilage

C. fibrocartilage

D. reticulo-cartilage

**Answer: C**



**Watch Video Solution**

**49. Ligament is mainly formed by**

A. retictuin

B. elastin

C. myosin

D. collagen

**Answer: B**



**Watch Video Solution**

 Watch Video Solution

50. Achilles tendon is associated with

- A. gluteus muscle
- B. hamstring muscle
- C. quadriceps muscle
- D. gastrocnemius muscle

**Answer: D**



Watch Video Solution

51. Which part of neuron is covered by fatty sheath ?

A. Axon

B. Cyton

C. Dendrite

D. Node of Ranvier

**Answer: A**



**Watch Video Solution**

52. Nerve cells do not divide because they do not have

A. nucleus

B. centrosome

C. Golgi body

D. mitochondria

**Answer: B**



**Watch Video Solution**

**53.** Which type of white blood cells are concerned with the release of histamine and the natural anticoagulant heparin ?

A. Neutrophils

B. Basophils

C. Eosinophils

D. Monocytes

**Answer: B**



**Watch Video Solution**



54. A drop of each of the following, is placed separately on four sides. Which of them will not coagulate ?

A. Blood plasma

B. Blood serum

C. Sample from the thoracic duct of lymphatic system

D. Whole blood from pulmonary vein

**Answer: A**



**Watch Video Solution**

**55.** Which one of the following pairs of structures distinguishes a nerve cell from other types of cell

- A. Perikaryon and dendrites
- B. Vacuoles and fibres
- C. Flagellum and medullary sheath
- D. Nucleus and mitochondria

**Answer: A**



**Watch Video Solution**

**56.** In which one of the following preparations are you likely to come across cell junctions most frequently ?

A. Ciliated epithelium

B. Thrombocytes

C. Tendon

D. Hyaline cartilage

**Answer: A**



**Watch Video Solution**

**57.** Read the assertion and reason carefully to mark the correct option out of the option given below:

**Assertion:** Thick layers of muscles are present in the wall of alimentary canal.

**Reason:** These muscles help in the mixing of food materials with the enzymes coming from different glands in the alimentary canal.

A. Both Assertion and Reason are true and

Reason is the correct explanation of the

Assertion

B. Both Assertion and Reason are true, but the Reason is not the correct explanation of Assertion

C. Assertion is true, but Reason is false

D. Both Assertion and Reason are false

**Answer: A**



**Watch Video Solution**

**58.** Striped muscle fibre has

A. one nucleus

B. two nucleus

C. many nuclei

D. no nuclei

**Answer: C**



**Watch Video Solution**

**59.** Cardiac muscles are

(a) striated (b) nonstriated (c) voluntary (d)  
involuntary

A. I, II and III

B. I and II

C. II and IV

D. I and III

**Answer: D**



**Watch Video Solution**

**60.** Compound squamous epithelium occurs in

A. stomach

B. intestine

C. trachea

D. pharynx

**Answer: D**



**Watch Video Solution**

**61. Myoglobin is present in**

A. all muscle fibres

B. white muscle fibres only



C. red muscle fibres only

D. both white and red muscle fibres

**Answer: D**



**Watch Video Solution**

**62.** Epithelial cells involved in absorption of digested food have on their free surface.

A. pinocytic vesicles

B. phagocytic vesicles

C. zymogen granules

D. microvilli

**Answer: D**



**Watch Video Solution**

**63.** Which are the longest cells in human body?

A. Muscles cells of legs

B. Bone cells

C. nerve cells

D. None of these

**Answer: C**



**Watch Video Solution**