



BIOLOGY

BOOKS - TRUEMAN'S BIOLOGY (ENGLISH)

CHEMICAL COORDINATION AND INTEGRATION

Multiple Choice Questions

1. One similarity between enzyme and hormones is that both
- A. are proteins
 - B. act at a wide range of pH
 - C. are used in minute amount
 - D. can be used again and again

Answer: C

 [Watch Video Solution](#)

2. Hormones differ from enzymes in that they are

- A. found only in plants
- B. found only in animals
- C. often used up in metabolism
- D. not used up in metabolism

Answer: C

 [Watch Video Solution](#)

3. Relaxin is chemically

- A. steroid
- B. protein
- C. carbohydrate
- D. both (1) and (3)

Answer: B

 [Watch Video Solution](#)

4. Which is the following hormones attach on a specific receptor site on plasma membrane ?

- A. Oestrogen
- B. Thyroxine
- C. Epinephrine
- D. All of these

Answer: C

 [Watch Video Solution](#)

5. Which of the following hormones utilize cAMP as a second messenger ?

- A. Estrogen
- B. Aldosterone
- C. Progesterone
- D. None of these

Answer: D

 [Watch Video Solution](#)

6. In heart cells, which one serves as a second messenger, speeding up muscle cell contraction in response to adrenaline ?

- A. GTP
- B. ATP
- C. cAMP
- D. AMP

Answer: C



[Watch Video Solution](#)

7. Which of the following enzymes is related with hormonal activity ?

- A. Arginase

B. Adenylcyclase

C. Cholinesterase

D. All of these

Answer: B



Watch Video Solution

8. Which is not involved as second messenger in Ca^{2+} mediated hormone ?

A. IP^3

B. DAG

C. $cAMP$

D. Phospholipase

Answer: C

 [Watch Video Solution](#)

9. Insulin receptors are

- A. G - protein
- B. Cytoplasmic protein
- C. Membrane protein
- D. Trimeric protein

Answer: C

 [Watch Video Solution](#)

10. Which of these correctly describes the role of inositol triphosphate in hormone action ?

A. It activates adenylatecyclase

B. It simulates the release of Ca^{2+} from endoplasmic reticulum

C. It activates protein kinase

D. All of the above

Answer: B

 [Watch Video Solution](#)

11. Pituitary gland is derived from

A. ectoderm

B. endoderm

C. mesoderm

D. None of these

Answer: A



Watch Video Solution

12. Both ectoderm and mesoderm contribute in the development of

A. thyroid

B. adrenal

C. pancreas

D. None of these

Answer: B



Watch Video Solution

13. The number of hormones secreted by anterior pituitary is

A. 3

B. 4

C. 6

D. 8

Answer: C



Watch Video Solution

14. The function of ACTH is to

- A. stimulate adrenal medulla
- B. stimulate adrenal cortex to produce hormones
- C. stimulate pituitary
- D. all of these

Answer: B

 [Watch Video Solution](#)

15. If pituitary is surgically removed, blood level of sodium falls and that of potassium rises due to

- A. atrophy of adrenal cortex
- B. atrophy of adrenal medulla
- C. fact that ADH from pituitary is no longer available
- D. fact that TSH from pituitary is no longer available

Answer: A

 [Watch Video Solution](#)

16. Growth hormone

- A. increases sodium and water retention
- B. increases the breakdown of lipids
- C. decreases the synthesis of proteins
- D. decreases rate of cell division

Answer: B

 [Watch Video Solution](#)

17. Which of these hormones stimulates so - matomedin secretion ?

A. GH

B. LH

C. FSH

D. TSH

Answer: A



[Watch Video Solution](#)

18. Which one of the following pituitary hormones does not have a target gland to act upon ?

A. Thyrotropin

B. Somatotropin

C. Gonadotropin

D. Adrenocorticotropin

Answer: B



Watch Video Solution

19. Hypersecretion of growth hormone

A. increases the probability that one will develop diabetes

B. results in gigantism if it occurs in children

C. causes acromegaly in adults

D. All of the above

Answer: D

 [Watch Video Solution](#)

20. Acromegaly is a disease caused by

- A. over secretion of growth hormone in adulthood
- B. over secretion of growth hormone in childhood
- C. under secretion of growth hormone in adulthood
- D. under secretion of growth hormone in childhood

Answer: A

 [Watch Video Solution](#)

21. Select the false statement

- A. T_4 is the chief circulating form of thyroid hormone, but is less active than T_3
- B. Acromegaly is usually associated with hypoglycemia and hypotension
- C. Thyroxine promotes the body growth and metamorphosis in amphibians
- D. Hypothalamus produces the hormone concerned with milk ejection

Answer: B

 [Watch Video Solution](#)

22. Hormone prolactin is secreted by

- A. neurohypophysis

B. hypothalamus

C. anterior pituitary

D. posterior pituitary

Answer: C



Watch Video Solution

23. MSH is secreted by

A. hypothalamus

B. pars nervosa

C. parstuberalis

D. pars intermedia

Answer: D

 [Watch Video Solution](#)

24. Which of the following secretes hormones with the help of neurosecretory axons ?

- A. Pineal gland
- B. Adrenal cortex
- C. Anterior pituitary
- D. posterior pituitary

Answer: D

 [Watch Video Solution](#)

25. Which of the following hormones are produced in the hypothalamus and stored in the posterior pituitary ?

- A. FSH and LH
- B. TSH and STH
- C. ACTH and MSH
- D. ADH and oxytocin

Answer: D



Watch Video Solution

26. Alcohol inhibits the secretion of

- A. ADH
- B. Insulin
- C. Oxytocin
- D. Progesterone

Answer: A



Watch Video Solution

27. Abnormal rise in oxytocin level in a pregnant female may cause

- A. abortion
- B. high blood pressure
- C. increased ventilation
- D. increased synthesis of milk

Answer: A



Watch Video Solution

28. Point out the odd one

A. Prolactin

B. Vasopressin

C. Corticotropin

D. Noradrenaline

Answer: D



Watch Video Solution

29. Column I lists the endocrine structure and Column II lists corresponding hormones. Match the two columns and identify

the correct option from those given

Column I	Column II
A. Hypothalamus	p. Oxytocin
B. Anterior pituitary	q. Estrogen
C. Testis	r. FSH and LH
D. Ovary	s. Androgens
	t. Gonadotropin releasing hormones

A. A = t, B = r, C = s, D = q

B. A = t, B = r, C = q, D = s

C. A = p, B = q, C = s, D = r

D. A = r, B = t, C = s, D = q

Answer: A



Watch Video Solution

30. Which of these hormones is not secreted into the hypothalamohypophysial portal system ?

A. PIH

B. ADH

C. GHRH

D. GnRH

Answer: B



[Watch Video Solution](#)

31. Which pair is tyrosine derivative ?

A. FSH and GH

B. Insulin and Glucagon

C. Calcitonin and Thyroxine

D. Thyroxine and Adrenaline

Answer: D



Watch Video Solution

32. Which gland stores its hormones before their release.

A. Pineal

B. Thyroid

C. Pancreas

D. Pituitary

Answer: B



Watch Video Solution

33. Increase in BMR is due to

- A. thyroxine
- B. adrenaline
- C. calcitonin
- D. parathormone

Answer: A



Watch Video Solution

34. Which hormone produces calorogenic effect ?

- A. FSH
- B. Calcitonin

C. Thyroxine

D. All of these

Answer: C



Watch Video Solution

35. Choose the correct statement.

A. During the time of stress, cortisol acts as an anabolic hormone in muscle and adipose tissue

B. The posterior pituitary is connected to hypothalamus by a portal system

C. Prolonged lack of iodine has a significant effect on thyroxine secretion

D. Injection of calcitonin causes hypercalcemia

Answer: C



Watch Video Solution

36. Which of these occurs as a response to a thyroidectomy ?

- A. Decreased TRH secretion
- B. Increases TRH secretion
- C. Increased calcitonin secretion
- D. Increased T_3 and T_4 secretion

Answer: B



Watch Video Solution

37. The secretion of which of these hormones would be increased in a person with endemic goitre ?

- A. TSH
- B. Thyroxine
- C. Triiodothyronine
- D. All of these

Answer: A

 [Watch Video Solution](#)

38. Which one of the following pairs is mis - matched ?

- A. Hypocortisolism - Cretinism
- B. Hypothyroidism - Myxoedema

C. Hypercortisolism - Cushing's syndrome

D. Hyperthyroidism - Exophthalmic goitre

Answer: A



Watch Video Solution

39. Parafollicular cells of thyroid secrete

A. calcitonin

B. thyroxine

C. thyroglobin

D. parathormone

Answer: A



Watch Video Solution

40. Which of the following statements are false / true

(A) Calcitonin regulates the metabolism of calcium

(B) Oxytocin stimulates contraction of uterine muscles during birth

(C) Grave's disease is caused by malfunctioning of adrenal gland

(D) ADH stimulates absorption of water and increase the urine production

A. A, B and C are true, D only false

B. A only true, B, C and D are false

C. A and D are false, B and C are true

D. A and B are true, C and D are false

Answer: D



Watch Video Solution

41. Parathormone is also known as

- A. Calciferol
- B. Birth hormone
- C. Collip's hormone
- D. langerhans hormone

Answer: C



[Watch Video Solution](#)

42. Increase in bleeding time and delay in blood coagulation is due to the deficiency of which hormone?

- A. thyroxine
- B. Adrenaline

C. Noradrenaline

D. parathormone

Answer: D



Watch Video Solution

43. Calcium level is not regulated by

A. Vitamin D

B. Thyroxine

C. Calcitonin

D. Collip's hormone

Answer: B



Watch Video Solution

44. Which of these statements about the adrenal cortex is true ?

- A. It secretes some androgens
- B. The zona glomerulosa secretes aldosterone
- C. The cortex is stimulated by ACTH
- D. All of the above are true

Answer: D



[Watch Video Solution](#)

45. Glomerulosa area of adrenal cortex is mainly responsible for

- A. maintaining glucose levels
- B. carbohydrate metabolism

C. water and electrolyte balance

D. steroid and hormone secretion

Answer: C



Watch Video Solution

46. If aldosterone secretion increases

A. Acidosis results

B. blood volume increases

C. blood sodium levels decreases

D. blood potassium levels increases

Answer: B



Watch Video Solution

47. Hyperglycemia is induced by all the following hormones except

A. glucagon

B. thyroxine

C. aldosterone

D. glucocorticoid

Answer: C

 [Watch Video Solution](#)

48. Which of the following hormones has no control over gluconeogenesis ?

A. insulin

B. Glucagon

C. Vasopressin

D. Corticosterone

Answer: C



Watch Video Solution

49. Which hormone possesses anti-insulin effect ?

A. Cortisol

B. Calcitonin

C. Oxytocin

D. Aldosterone

Answer: A

 [Watch Video Solution](#)

50. Hormone useful in suppressing allergies, rheumatoid arthritis and tissue inflammation is

- A. thyroxine
- B. adrenaline
- C. glucocorticoid
- D. mineralocorticoid

Answer: C

 [Watch Video Solution](#)

51. Disease caused by undersecretion of adrenal cortex

- A. sterility
- B. Cretinism
- C. Dwarfism
- D. Addison's disease

Answer: D



Watch Video Solution

52. Excess of which of the following hormones causes Cushing's syndrome ?

- A. thyroxine
- B. Adrenaline
- C. Noradrenaline
- D. Cortisol

Answer: D



Watch Video Solution

53. Which is not a symptom of Cushing's syndrome ?

- A. Supressed immune function
- B. Hypertension
- C. bone loss
- D. Hypokalemia

Answer: D



Watch Video Solution

54. The excessive secretion of mineralocorticoids independent of renin - angiotensin - aldosterone system results in

- A. Grave's disease
- B. Conn's syndrome
- C. Addison's disease
- D. Tetany

Answer: B



[Watch Video Solution](#)

55. Melatonin is secreted by

- A. pineal
- B. pituitary

C. thymus

D. adrenal cortex

Answer: A



Watch Video Solution

56. The 24 hour (diurnal) rhythm of our body such as the sleep-wake cycle is regulated by the hormone

Or

Which hormone is secreted more in dark condition

A. Insulin

B. Melatonin

C. Thyroxine

D. Adrenaline

Answer: B

 [Watch Video Solution](#)

57. The function of pineal body is to

- A. regulates the period of puberty
- B. maintains sleep awake cycle
- C. lighten the skin colours
- D. all of the above

Answer: D

 [Watch Video Solution](#)

58. Which of the following endocrine gland functions as a biological clock and neurosecretory transducer ?

- A. Pineal gland
- B. Thymus gland
- C. Adrenal gland
- D. Pituitary gland

Answer: A



[Watch Video Solution](#)

59. Which of these hormones may have a primary role in many circadian [24 hour-diumal] rhythms ?

- A. Insulin

B. Estradiol

C. Melatonin

D. Epinephrine

Answer: C



Watch Video Solution

60. If thymus gland of an infant is removed which of the following will not form

A. Monocytes

B. Eosinophils

C. B-lymphocytes

D. T-lymphocytes

Answer: D

 [Watch Video Solution](#)

61. Hypersecretion of glucagon may cause

- A. Hypoglycemia
- B. glycosuria
- C. Hypertension
- D. diabetes insipidus

Answer: B

 [Watch Video Solution](#)

62. Insuline increases

- A. breakdown of fats
- B. breakdown of protein
- C. breakdown of glycogen in liver
- D. uptake of glucose by its target tissues

Answer: D



Watch Video Solution

63. Alloxan treatment destroys

- A. STH cells
- B. Cells of Leydig
- C. Beta cells of Islets of Langerhans
- D. Alpha cells of Islets of Langerhans

Answer: C

 Watch Video Solution

64. Match the hormones listed under column I with their functions listed under column II. Choose the answer which gives the correct combination of the alphabets of the two columns

Column I	Column II
A. Oxytocin	p Stimulates ovulation
B. Prolactin	q Implantation and maintenance of pregnancy
C. Luteinising hormone	r Lactation after childbirth
D. Progesterone	s Uterine contraction during labour
	t Reabsorption of water by nephrons

A. A = s, B = q, C = r, D = t

B. $A = t, B = r, C = p, D = s$

C. $A = s, B = r, C = p, D = q$

D. $A = t, B = p, C = s, D = r$

Answer: C



Watch Video Solution

65. Study the following table

	Endocrine gland	Hormone	Deficiency disorder
A	Neurohypophysis	Vasopressin	Diabetes insipidus
B	Adrenal cortex	Corticosteroids	Addison's disease
C	Parathyroid glands	Parathormone	Myxoedema
D	Thyroid gland	Calcitonin	Acromegaly

A. B and C

B. A and B

C. C and D

D. A and D

Answer: B

 [Watch Video Solution](#)

66. Match List I and List II and select the correct option

List I		List II	
A	Adrenaline	1.	Myxoedema
B	Hyperparathyroidism	2.	Accelerates heartbeat
C	Oxytocin	3.	Saltwater balance
D	Hypothyroidism	4.	Childbirth
E	Aldosterone	5.	Demineralization

A. A = 3, B = 4, C = 5, D = 3, E = 2

B. A = 5, B = 3, C = 2, D = 4, E = 1

C. $A = 2, B = 5, C = 4, D = 1, E = 3$

D. $A = 2, B = 3, C = 4, D = 5, E = 1$

Answer: C

 [Watch Video Solution](#)

67. Obesity of face, hyperglycemia and virilism in females are characteristics of

A. Grave's disease

B. Myxoedema

C. Cushing's syndrome

D. Addison's disease

Answer: C

 [Watch Video Solution](#)

68. The genetic deficiency of ADH - receptor leads to

- A. Glycosuria
- B. Diabetes mellitus
- C. Addison's disease
- D. diabetes insipidus

Answer: D

69. Which of the following hormones is not a steroid ?

- A. Vasopressin

B. Testosterone

C. Androgen

D. Aldosterone

Answer: A



Watch Video Solution

70. Match the hormone with its source of secretion

- A. Somatostatin
- B. Melatonin
- C. Aldosterone
- D. Progesterone
- E. HCG

- 1. Pineal gland
- 2. Corpus luteum
- 3. Placenta
- 4. Adrenal cortex
- 5. Islet of Langerhans
- 6. Adenohypophysis

A. A = 5, B = 1, C = 6, D = 3, E = 2

B. A = 1, B = 2, C = 4, D = 3, E = 5

C. A = 5, B = 1, C = 4, D = 2, E = 3

D. A = 2, B = 6, C = 4, D = 5, E = 3

Answer: C

 [Watch Video Solution](#)

71. Match List I with List II and choose the correct answer

List I		List II	
A	Hypothalamus	1.	Sperm lysins
B	Acrosome	2.	Estrogen
C	Graafian follicle	3.	Relaxin
D	Leydig cells	4.	GnRH
E	Parturition	5.	Testosterone

A. A = 4, B = 1, C = 2, D = 3, E = 5

B. A = 2, B = 1, C = 5, D = 3, E = 5

C. A = 2, B = 1, C = 5, D = 4, E = 3

D. A = 4, B = 1, C = 2, D = 5, E = 3

Answer: D



[Watch Video Solution](#)

72. Which of the following hormones is correctly matched with its deficiency disease ?

- A. Parathormone - Tetany
- B. Relaxin - Cretinism
- C. Insulin - Diabetes insipidus
- D. Prolactin - Astigmatism

Answer: A



[Watch Video Solution](#)

73. Parathormone influences calcium absorption in the small intestine by regulating the metabolism of

- A. Vitamin - C
- B. Vitamin - D
- C. Vitamin - B_6
- D. Enterogastrone

Answer: B

 [Watch Video Solution](#)

74. The inability to regulate the concentration of sodium ions in the blood could be due to the improper functioning of one of the following

- A. Pars nervosa : It produces ADH
- B. Adenohypophysis : It produces TSH
- C. Adrenal cortex - It produces aldosterone
- D. Adrenal medulla : It produces epinephrine

Answer: C

 [Watch Video Solution](#)

75. Select the correct matched pair

- A. Pineal gland - does not influence menstrual oxytocin
- B. Corpus luteum - secretes oxytocin
- C. Interstitial cells - erythropoietic
- D. Cholecystikinin - stimulates contraction of gall bladder

Answer: D



Watch Video Solution

76. Medullary thyroid carcinoma is a type of thyroid cancer that occurs in the parafollicular cells. Which of the following can be used as a tumor marker in order to identify medullary carcinoma ?

- A. Thyroid hormone
- B. Cell membrane receptors
- C. Abnormal rate of cellular division
- D. Calcitonin

Answer: D



Watch Video Solution

77. Find out the correct match

Hormone	Gland	Function
(1) Thyroxine	Thyroid gland	Decreases basal metabolic rate
(2) Glucagon	β -cells of pancreas	Stimulates glycogenolysis resulting in an increased blood sugar
(3) Calcitonin	Thyroid gland	Decreases blood calcium levels
(4) Glucocorticoids	Adrenal medulla	Stimulate gluconeogenesis, lipolysis and proteolysis

A. N/A

B. N/A

C. N/A

D. N/A

Answer: C



Watch Video Solution

78. Find the correct statement

- A. Androgens are produced by the Leydig cells and have a catabolic effect on protein and carbohydrate metabolism
- B. The corpus luteum secretes progesterone which is mainly responsible for development of female secondary sex organs
- C. The ANF is secreted by atrial wall of heart and it decreases blood pressure

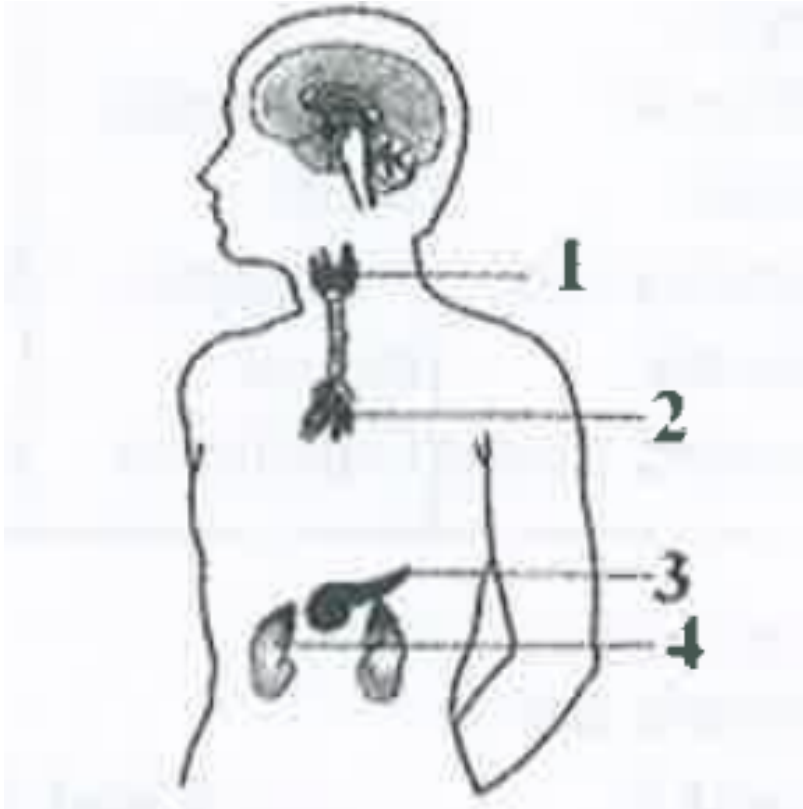
D. Aldosterone acts on kidney to increase Na^+ and K^+ reabsorption.

Answer: C



Watch Video Solution

79. Given is the figure showing location of a few endocrine glands.



choose the one correct match

- A. No Gland Associated with
1 Pituitary Humoral immunity
- B. No Gland Associated with
2 Parathyroid Calcium metabolism
- C. No Gland Associated with
3 Pancreas Fight and Flight
- D. No Gland Associated with
4 Adrenal secondary sexual characters

Answer: D



Watch Video Solution

80. Find the incorrect match

- A. Parathormone - Ca^{+} metabolism (action)
- B. ADH - Diabetes mellitus (disease)
- C. Glucagon - ' α ' cells (Source)
- D. Progesterone - Corpus Luteum (Source)

Answer: B



Watch Video Solution

81. Consider the following hormones

(i) Antidiuretic hormone

(ii) Aldosterone

(iii) Parathormone (iv) Oxytocin

In the vertebrate animals, the hormones involved in the control of osmoregulation would include

A. (i), (ii), (iii) and (iv)

B. (i), (ii) and (iii)

C. (i) and (ii)

D. (iii) and (iv)

Answer: C



Watch Video Solution

82. Match list - I with list - II and select the correct answer using the code given below the lists

List-I	List-II
A. LH	1. Suppression of growth hormone
B. Somatostatin	2. Dispersion of melanin
C. Melatonin	3. Formation of corpora lutea
D. MSH	4. Antigonadal action

A. $A \ B \ C \ D$
3 1 4 2

B. $A \ B \ C \ D$
3 1 2 4

C. $A \ B \ C \ D$
1 3 4 2

D. $A \ B \ C \ D$
1 3 2 4

Answer: A



Watch Video Solution

83. Match list - I with list - II and select the correct answer using codes given below the lists

List-I	List-II
A. Xerophthalmia	1. ACTH
B. Tetany	2. Vitamin-A
C. Beriberi	3. Vitamin-B ₁
D. Cushing's disease	4. Parathyroid
	5. Vitamin-B ₂

A. *A B C D*
2 3 1 4

B. *A B C D*
2 4 3 1

C. *A B C D*
2 5 3 1

D. *A B C D*
4 5 2 3

Answer: B



Watch Video Solution

84. Match list - I (Organ) with list - II (Hormone) and select the correct answer using the codes given below the lists

List-I	List-II
A. Adenohypophysis	1. Ecdysone
B. Ovary	2. Glucagon
C. Prothoracic gland	3. Luteinising hormone
D. Alpha cells of islets of Langerhans	4. Insulin
	5. Progesterone

A. $A \ B \ C \ D$
3 5 1 2

B. $A \ B \ C \ D$
3 4 1 2

C. $A \ B \ C \ D$
1 3 4 4

D. $A \ B \ C \ D$
4 3 5 2

Answer: A

 [Watch Video Solution](#)

85. Which one of the following pairs is not - correctly matched ?

- A. Pineal body : Dopamine
- B. Leydig cells : Androgen
- C. Intestine : Secretin
- D. Neurohypophysis : Oxytocin

Answer: A



Watch Video Solution

86. Match list - I (hormones) with list - II (effect) and select the correct answer using the codes given below the lists

List-I (Hormones)	List-II (Effect)
A. Melatonin	1. Loosening of pelvic ligaments.
B. Relaxin	2. Influences the activity of ovary.
C. MSH	3. Pigment dispersal in melanophores
D. STH	4. Synthesis and release of Glucocorticoids
	5. Metabolism of proteins and fat.

A. *A B C D*
2 1 4 3

B. *A B C D*
1 2 3 5

C. *A B C D*
1 2 4 3

D. *A B C D*
2 1 3 5

Answer: D



Watch Video Solution

87. Consider the following

1. Vasopressin deficiency
2. Insulin deficiency
3. Vasopressin hypersecretion

Which of the above causes polyuria ?

- A. 1 only
- B. 1 and 2
- C. 3 only
- D. 2 and 3

Answer: B



Watch Video Solution

88. Consider the following

1. AdenylCyclase
2. Inosital 1, 4, 5-triphosphate
3. cAMP
4. Catecholamine

Which of the above is/are second messengers ?

- A. 1, 3 and 4
- B. 2 and 3 only
- C. 1 and 3 only
- D. 1, 2, 3 and 4

Answer: B



Watch Video Solution

89. Steroid hormones

- A. Pass easily through cell membranes to act in the cell
- B. Include testosterone, estrogen, and growth hormone
- C. Are only produced in the pituitary gland
- D. Stimulate liver cells to convert glucose to glycogen

Answer: A



Watch Video Solution

90. Hormones that are hydrophobic show delay in initial action and capable of altering gene expression are

- A. Peptides
- B. Steroids

C. Catecholamines

D. Thyroid hormones

Answer: B



Watch Video Solution

91. Osteoporosis results from lesser calcium in bones. This may be due to

A. hyperactivity of both adrenal cortex and parathyroid glands

B. hypoactivity of both adrenal cortex and parathyroid glands

C. hypoactivity of adrenal cortex and hyper activity of parathyroid gland

D. hyperactivity of adrenal cortex and hypoactivity of parathyroid gland

Answer: A



Watch Video Solution

92. As part of a student project, Sheela surgically made a full cut in the hypothalamo - hypophyseal tract in pregnant rabbits and studied the physiological effects on different tissues/organs.

Which of the following should be expected ?

- (i) Formation of large volume of dilute urine
- (ii) Increased blood sugar levels
- (iii) increased heart rate
- (iv) Difficulty in parturition

A. (i) and (ii)

B. (ii) and (iii)

C. (iii) and (iv)

D. (i) and (iv)

Answer: D



[Watch Video Solution](#)

93. Decrease aldosterone level leads to increase in blood

A. pressure

B. Glucose

C. Potassium

D. All of the above

Answer: C



[Watch Video Solution](#)

94. Transection of pituitary stalk leads to increase in

- A. TSH
- B. Prolactin
- C. GH
- D. ACTH

Answer: B



[Watch Video Solution](#)

95. Anabolic hormones are all except

- A. Cortisol
- B. Testosterone
- C. Growth hormone

D. Insulin

Answer: A



Watch Video Solution

96. The metabolism of glucose is regulated by a complex orchestration of hormones. All of the following endocrine products increase blood glucose concentration except

A. Epinephrine

B. Glucagon

C. Calcitonin

D. Cortisol

Answer: C



Watch Video Solution

97. Which of the following methods can be used to obtain a definitive diagnosis of type I insulin-dependent diabetes ?

- A. Detecting the presence of islet cell antibodies
- B. Performing an insulin receptor count
- C. Testing for elevated blood sugar concentration
- D. Screening individuals for obesity

Answer: A



Watch Video Solution

98. Which of the following is the main activating factor of aldosterone secretion during periods of dehydration ?

- A. ACTH
- B. Sympathetic nervous system
- C. Renin
- D. Spontaneous adrenal release

Answer: C

 [Watch Video Solution](#)

99. Insulinoma is a common tumor of the endocrine pancreas that presents with excessive insulin secretion. Which of the following is an effect of insulinoma on the body?

- A. Hyperglycemia
- B. Low glycogen levels
- C. Decreased protein synthesis

D. Increased rate of glycolysis

Answer: D



[Watch Video Solution](#)

100. Vasopressin analogs that inhibit the synthesis of ADH would most likely work at which of the following sites ?

- A. Collecting duct
- B. Anterior pituitary
- C. Posterior pituitary
- D. Hypothalamus

Answer: D



[Watch Video Solution](#)

101. An uncontrolled diabetic patient may occasionally have glucose appear in the urine. Which of the following statements is the best explanation for this phenomenon ?

- A. High plasma levels of glucose cause glucose to be secreted by the proximal tubule.
- B. The kidney is a significant site for glucose synthesis, which causes glucose to occasionally appear in urine
- C. The high concentration of glucose saturates the reabsorption pumps, causing glucose to appear in the urine
- D. The vasa recta transports glucose into urine.

Answer: C



Watch Video Solution

102. Accidental pituitary stalk damage will cause all except

- A. Diabetes mellitus
- B. Diabetes insipidus
- C. Hypothyroidism
- D. Addison's disease

Answer: A



Watch Video Solution

103. A dopamine tract from the hypothalamus plays an important role in regulating the release of prolactin. All of the following are true regarding prolactin except

- A. It is produced by the anterior pituitary gland

B. It stimulates milk production

C. Secretion is inhibited by dopamine

D. It is produced in the same area as oxytocin

Answer: D



Watch Video Solution

104. Select the right match of endocrine gland and their hormones among the options given below

- A. Pineal (i) Epinephrine
B. Thyroid (ii) Melatonin
C. Ovary (iii) Estrogen
D. Adrenal medulla (iv) Tetraiodothyronine

A. A - (iv), B - (ii), C - (iii), D - (i)

B. A - (ii), B - (iv), C - (i), D - (iii)

C. A - (iv), B - (ii), C - (i), D - (iii)

D. A - (ii), B - (iv), C - (iii), D - (i)

Answer: D



[Watch Video Solution](#)

105. Listed below are the hormones of anterior pituitary origin.

Tick the wrong entry.

A. Growth hormone

B. Follicle stimulating hormone

C. Oxytocin

D. Adrenocorticotrophic hormone

Answer: C



[Watch Video Solution](#)

106. Choose the correct answer among the following options:

A Epinephrine

i Increase in muscle growth

V Testosterone

ii Decrease in blood pressure

C Glucagon

iii) Decrease in liver glycogen content

D Atrial natriuretic factor

iv Increase heart beat

A. A - (ii), B - (i), C - (iii), D - (i)

B. A - (iv), B - (i), C - (iii), D - (ii)

C. A - (i), B - (ii), C - (iii), D - (iv)

D. A - (i), B - (iv), C - (ii), D - (iii)

Answer: B



Watch Video Solution

107. One of the following conditions is not linked to deficiency of thyroid hormones

A. Cretinism

B. Goitre

C. Myxoedema

D. Exophthalmos

Answer: D



Watch Video Solution

108. A person passes much urine and drinks much water but his blood glucose level is normal. This condition may be the result of

A. A reduction in insulin secretion from pancreas

B. A reduction in vasopressin secretion from posterior pituitary

C. A fall in the glucose concentration in urine

D. An increase in secretion of glucagons

Answer: B



Watch Video Solution

109. The source of somatostatin is same as that of

- A. Thyroxine and calcitonin
- B. Insulin and Glucagon
- C. Somatotropin and prolactin
- D. Vasopressin and thyroxine

Answer: B



Watch Video Solution

110. Assertion : Diabetes insipidus is marked by excessive urination and too much thirst for water .

Reason : Anti-diuretic hormone (ADH) is secreted by the posterior lobe of pituitary gland .

- A. If both Assertion and Reason are true and the Reason is the correct explanation of the Assertion, then mark a.
- B. If both Assertion and Reason are true but the Reason is not the correct explanation of the Assertion, then mark a.
- C. If Assertion is true statement but Reason is false, then mark c.
- D. If both Assertion and Reason are false statements, then mark d.

Answer: B



Watch Video Solution

111. Which one of the following four glands is correctly matched with the accompanying description

- A. Thyroid - hyperactivity in young children causes cretinism.
- B. Thymus - starts undergoing atrophy after puberty
- C. Parathyroid - secretes parathormone which promotes movement of calcium ions from blood into bones during calcification.
- D. Pancreas - Delta cells of the Islets of Langerhans secrete a hormone which stimulates glycolysis in liver

Answer: B



Watch Video Solution

112. Tadpoles of Frog can be made to grow as giant sized tadpoles, if they are

- A. Administered antithyroid substance like thiourea
- B. Administered large amounts of thyroxine
- C. Reared on a diet rich in egg yolk
- D. Reared on a diet rich in both egg yolk and glucose

Answer: A



Watch Video Solution

113. Find out the correct match

Hormone	Gland	Function
(1) Thyroxine	Thyroid gland	Decreases basal metabolic rate
(2) Glucagon	β -cells of pancreas	Stimulates glycogenolysis resulting in an increased blood sugar
(3) Calcitonin	Thyroid gland	Decreases blood calcium levels
(4) Glucocorticoids	Adrenal medulla	Stimulate gluconeogenesis, lipolysis and proteolysis

A. N/A

B. N/A

C. N/A

D. N/A

Answer: C



Watch Video Solution

114. The hormone that helps in the conversion of glucose into glycogen is:

- A. Adrenaline
- B. Insulin
- C. Cortisone
- D. Bile acids

Answer: B



Watch Video Solution

115. Which of the following pairs correctly matches a hormone with the disease resulting from its deficiency ?

A. Thyroxine - Tetany

B. Parathyroid - Diabetes mellitus

C. Luteinizing hormone - Failure of ovulation

D. Insuline - Diabetes insipidus

Answer: C



Watch Video Solution

116. Which of the following is not a hereditary disease

A. Haemophilia

B. Cretinism

C. Cystic fibrosis

D. Thalassaemia

Answer: B



[Watch Video Solution](#)

117. A person is undergoing prolonged fasting. His urine would contain abnormal quantities of

A. Fats

B. Amino acids

C. Ketones

D. Glucose

Answer: C



[Watch Video Solution](#)

118. A steroid hormone which regulates glucose metabolism is

Or

Excess of which of the following hormones causes Cushing's syndrome

- A. Cortisol
- B. Corticosterone
- C. 11 - deoxycorticosterone
- D. Cortisone

Answer: A

119. Which one of the following is not a second messenger in hormone action

A. cGMP

B. Calcium

C. Sodium

D. cAMP

Answer: C



Watch Video Solution

120. Which of the following is an accumulation and release centre of neurohormones

A. Posterior pituitary lobe

B. Intermediate lobe of the pituitary

C. Hypothalamus

D. Anterior pituitary lobe

Answer: A



Watch Video Solution

121. Which of the following is an amine hormone ?

A. Progesterone

B. Thyroxine

C. Oxypurin

D. Insulin

Answer: B

122. A health disorder that results from the deficiency of thyroxine in adults and is characterized by (i) a low metabolic rate, (ii) increase in body weight, and (iii) tendency to retain water in tissues is

- A. Myxoedema
- B. Cretinism
- C. Hypothyroidism
- D. Simple goiter

Answer: A

123. Low Ca^{+} in the body fluid may be the cause of

- A. Gout
- B. Tetany
- C. Anaemia
- D. Angina pectoris

Answer: B



Watch Video Solution

124. Which one of the following pairs is incorrectly matched ?

- A. Insulin - Diabetes mellitus (disease)
- B. Glucagon - Beta cells (source)
- C. Somatostatin - Delta cells (source)

D. Corpus luteum - Relaxin (secretion)

Answer: B



[Watch Video Solution](#)

125. Injury to adrenal cortex is not likely to affect the secretion of which one of the following ?

A. Cortisol

B. Aldosterone

C. Both Androstenedione and Dehydroepiandrosterone

D. Adrenaline

Answer: D



[Watch Video Solution](#)

126. Toxic agents present in food which interfere with thyroxine synthesis lead to the development of

- A. Thyrotoxicosis
- B. Toxic goitre
- C. Cretinism
- D. Simple goitre

Answer: D



Watch Video Solution

127. Match the source gland with its respective hormone as well as the function

Source gland	Hormone	Function
(1) Anterior pituitary	Oxytocin	Contraction of uterus muscles during child birth
(2) Posterior pituitary	Vasopressin	Stimulates resorption of water in the distal tubules in the nephron
(3) Corpus luteum	Estrogen	Supports pregnancy
(4) Thyroid	Thyroxine	Regulates blood calcium level

A. N/A

B. N/A

C. N/A

D. N/A

Answer: B

128. Given below is an incomplete table about certain hormones, their source glands and one major effect of each on the body in humans. Identify the correct option for the three blanks A, B and C.

GLAND	SECRETION	EFFECT ON BODY
A	Oestrogen	Maintenance of secondary sexual characters
Alpha cells of Islets of Langerhans	B	Raises blood sugar level
Anterior pituitary	C	Over secretion leads to gigantism

- A. *A* *B* *C*
 Ovary Glucagon Growth hormone
- B. *A* *B* *C*
 Placenta Insulin Vasopressin

C. *A* *B* *C*
Ovary Insulin Calcitonin

D. *A* *B* *C*
Placenta Glucagon Calcitonin

Answer: A

 [Watch Video Solution](#)

129. Which one of the following pairs of hormones are the examples of those that can easily pass through the cell membrane of the target cell and bind to a receptor inside it (mostly in the nucleus)

- A. Thyroxin, Insulin
- B. Somatostatin, oxytocin
- C. Cortisol, testosterone
- D. Insulin, glucagon

Answer: C



Watch Video Solution

130. Select the correct matching of a hormone, its source and function.

Hormone	Source	Function
(1) Vasopressin	Posterior Pituitary	Increases loss of water through urine
(2) Norepinephrine	Adrenal medulla	Increases heart beat, rate of respiration & alertness
(3) Glucagon	Beta-cells of Islets of langerhans	Stimulates glycolysis
(4) Prolactin	Posterior Pituitary	Regulates growth of mammary glands and milk formation in females

A. N/A

B. N/A

C. N/A

D. N/A

Answer: B



Watch Video Solution

131. The 24 hour (diurnal) rhythm of our body such as the sleep-wake cycle is regulated by the hormone

Or

Which hormone is secreted more in dark condition

- A. Calcitonin
- B. Prolactin
- C. Adrenaline
- D. Melatonin

Answer: D



Watch Video Solution

132. The gland which regulates the level of calcium in the blood is

- A. Thyroid
- B. Adrenal
- C. Parathyroids
- D. Pituitary

Answer: C



Watch Video Solution

133. Hypothyroidism during pregnancy causes

- A. Goitre
- B. Cretinism

C. Hypoglycemia

D. Diabetes mellitus

Answer: B



[Watch Video Solution](#)

134. During summer season, which hormone concentration is maintained at high level

A. Insulin

B. Vasopressin

C. Oxytocin

D. Corticoids

Answer: B



[Watch Video Solution](#)

135. Somatostatin is produced by

- A. Adenohypophysis
- B. Neurohypophysis
- C. Pineal gland
- D. Basal part of diencephalon

Answer: D

136. Which of the following vitamins has some physiological effects similar to those of parathormone ?

- A. Vitamin A

B. Vitamin D

C. Vitamin C

D. Vitamin B

Answer: B



Watch Video Solution

137. Function of somatostatin is to

A. Stimulates glucagon release while inhibits insulin release

B. stimulates release of insulin and glucagon

C. inhibits release of insulin and glucagon

D. inhibits glucagon release while stimulates insulin release

Answer: C

 [Watch Video Solution](#)

138. Thymosin hormone is secreted by

- A. Thyroid gland
- B. Parathyroid gland
- C. Thymus gland
- D. Hypothalamus

Answer: C

 [Watch Video Solution](#)

139. Gigantism and acromegaly are due to

- A. Hyperthyroidism

B. Hypopituitarism

C. Hyperpituitarism

D. Hypothyroidism

Answer: C



Watch Video Solution

140. Which of the following is not correct for the effect of parathormone ?

A. It encourages the activity of osteoclasts

B. It lowers blood Ca^{2+} level

C. In its absence, body shivers due to constant muscle contraction

D. It stimulates absorption of Ca^{2+} by in testinal tract

Answer: B

 [Watch Video Solution](#)

141. In females, hormone inhibin is secreted by

- A. Granulosa cells and corpus luteum
- B. Granulosa and theca
- C. Granulosa and cumulus oophorus cells
- D. Granulosa cells and zona pellucida

Answer: A

 [Watch Video Solution](#)

142. Master gland, pituitary has a non - functional part in humans

A. Anterior pituitary

B. Pars intermedia

C. Neurohypophysis

D. Pars nervosa

Answer: B



Watch Video Solution

143. The chemical nature of hormones secreted by α and δ cells of pancreas is

A. glycolipid

B. glycoprotein

C. steroid

D. polypeptide

Answer: D

 [Watch Video Solution](#)

144. Secretion of mineralocorticoids is under control of

- A. FSH
- B. TSH
- C. ACTH
- D. ADH

Answer: C

 [Watch Video Solution](#)

145. Functioning of thyroid is under the control of TSH except for

A. Storage of iodine

B. Thyrocalcitonin

C. Thyronine

D. Thyroxine

Answer: B



Watch Video Solution

146. Damage to thymus in a child may lead to

A. loss of cell mediated immunity

B. loss of antibody mediated immunity

C. a reduction in the amount of plasma proteins

D. a reduction in the haemoglobin content in blood

Answer: A



Watch Video Solution

147. Match the hormone with its source of secretion

- | | |
|------------------|-------------------------|
| (a) Somatostatin | (A) Pineal gland |
| (b) Melatonin | (B) Corpus luteum |
| (c) Aldosterone | (C) Placenta |
| (d) Progesterone | (D) Adrenal cortex |
| (e) HCG | (E) Islet of Langerhans |
| | (F) Adenohypophysis |

A. a - E, b - A, C - F, d - C, e - B

B. a - A, b - 2, C - D, d - C, e - E

C. a - B, b - F, C - D, d - E, e - C

D. a - E, b - A, c - D, d - B, e - C

Answer: D



Watch Video Solution

148. Goitre can occur as a consequences of all the following except

- A. Grave's disease
- B. Excessive intake of exogeneous thyroxine
- C. Iodine deficiency
- D. Pituitary adenoma

Answer: B



Watch Video Solution

149. Antidiuretic hormone which is not steroid also known as

- A. Secretin

B. Vasopressin

C. Renin

D. Gastrin

Answer: B



Watch Video Solution

150. Condition of concentration of ketone body in urine is

A. acromegaly

B. diabetes mellitus

C. turner's syndrome

D. sickle - cell anaemia

Answer: B

 [Watch Video Solution](#)

151. Endemic goitre is a state of

- A. increased thyroid function
- B. normal thyroid function
- C. decreased thyroid function
- D. moderate thyroid function

Answer: C

 [Watch Video Solution](#)

152. Select the correct matched pair

- A. Pineal gland - does not influence menstrual cycle

B. Corpus luteum - secretes oxytocin

C. Interstitial cells - erythropoietic

D. cholecystokinin - stimulates pancreatic enzyme secretions

Answer: D



Watch Video Solution

153. Match the column I with column II and select the correct option

Column I	Column II
A ANF	1. Regulates blood calcium levels
B MSH	2. Decreases blood pressure
C GIP	3. Pigmentation
D TCT	4. Inhibits gastric secretion

A. A - 4, B - 1, C - 2, D - 3

B. A - 2, B - 1, C - 4, D - 3

C. A - 4, B - 1, C - 3, D - 2

D. A - 2, B - 3, C - 4, D - 1

Answer: D



Watch Video Solution

154. Which of the following is an amino acid derived hormone ?

A. insulin

B. epinephrine

C. estradiol

D. testosterone

Answer: B

 [Watch Video Solution](#)

155. Which of the following hormones is a steroid ?

A. Oestrogen

B. Insulin

C. Glucagon

D. Thyroxine

Answer: A

 [Watch Video Solution](#)

156. With reference to the pituitary , which of the following statements is true

- A. Neurohypophysis secretes vasopressin and oxytocin
- B. Neurohypophysis secretes TSH and STH
- C. Neurohypophysis collects and stores vasopressin and oxytocin
- D. adenohypophysis secretes vasopressin and oxytocin

Answer: C

 [Watch Video Solution](#)

157. Erythropoietin is released by

- A. pituitary gland

B. pancreas

C. Adrenal gland

D. kidney

Answer: A



Watch Video Solution

158. Which of the following is a gastro intestinal hormone ?

A. Prolactin

B. Enterokinase

C. GH

D. FSH

Answer: B



[Watch Video Solution](#)

159. Tetany is caused by

- A. hyperparathyroidism
- B. hypoparathyroidism
- C. hyperthyroidism
- D. Hypothyroidism

Answer: B



[Watch Video Solution](#)

160. Which of the following is a mineralocorticoid ?

- A. testosterone

B. progesterone

C. adrenaline

D. aldosterone

Answer: D



Watch Video Solution

161. ACTH is secreted from

A. adrenal cortex

B. pituitary

C. adrenal medulla

D. thyroid

Answer: B

 [Watch Video Solution](#)

162. Cretinism is caused by

- A. hypothyroidism
- B. hypoparathyroidism
- C. hyperthyroidism
- D. hyperparathyroidism

Answer: A

 [Watch Video Solution](#)

163. Which of the following is known as master endocrine gland

- A. Adrenal gland

B. Thyroid gland

C. Pituitary gland

D. Pineal gland

Answer: C



Watch Video Solution

164. Which of the following statements is correct in relation to the endocrine system.

A. Non - nutrient chemicals produced by the body in trace amount that act as intercellular messenger are known as hormones.

B. Releasing and inhibitory hormones are produced by the pituitary gland.

C. Adenohypophysis is under direct neural regulation of the hypothalamus.

D. Organs in the body like gastrointestinal tract, heart, kidney and liver do not produce any hormone.

Answer: A

 [Watch Video Solution](#)

165. Identify the hormone with its correct matching of source and function :

A. Atrial natriuretic factor - ventricular wall increases the blood pressure

B. Oxytocin - posterior pituitary, growth and maintenance of mammary glands

C. Melatonin - pineal gland, regulates the normal rhythm of sleepwake cycle

D. Progesterone - corpus luteum, stimulation of growth and activities of female secondary sex organs

Answer: C



Watch Video Solution

166. A chemical signal that has both endocrine and neural roles is

A. calcitonin

B. epinephrine

C. cortisol

D. Melatonin

Answer: B

 [Watch Video Solution](#)

167. Which one of the following hormones is not involved in sugar metabolism ?

- A. Cortisone
- B. Aldosterone
- C. Insulin
- D. Glucagon

Answer: B

 [Watch Video Solution](#)

168. Which one of the following hormones thought synthesised elsewhere, is stored and released by the master gland ?

- A. Antidiuretic hormone
- B. Luteinizing hormone
- C. Prolactin
- D. Melanocyte stimulating hormone

Answer: A

 [Watch Video Solution](#)

169. The amino acid tryptophan is the precursor for the synthesis of

- A. Thyroxine and Triiodothyronine

B. Estrogen and Progesterone

C. Cortisol and Cortisone

D. Melatonin and Serotonin

Answer: D



[Watch Video Solution](#)

170. Which of the following pairs of hormones are not antagonistic (having opposite effects) to each other ?

A. Insuline - Glucagon

B. Aldosterone - Atrial Natriuretic Factor

C. Relaxin - Inhibin

D. Parathormone - Calcitonin

Answer: C



Watch Video Solution

171. Graves' disease is caused due to

- A. hyposecretion of thyroid gland
- B. hypersecretion of thyroid gland
- C. hypersecretion of adrenal gland
- D. hyposecretion of adrenal gland

Answer: B



Watch Video Solution

172. Name a peptide hormone which acts mainly on hepatocytes, adipocytes and enhances cellular glucose uptake and utilization :

- A. Insulin
- B. Glucagon
- C. Secretin
- D. Gastrin

Answer: A

 [Watch Video Solution](#)

173. The posterior pituitary gland is not a 'true' endocrine gland because

- A. it is provided with a duct

- B. it only stores and releases hormones
- C. it is under the regulation of hypothalamus
- D. it secretes enzymes

Answer: B

 [Watch Video Solution](#)

174. Hypersecretion of Growth Hormone in adults does not cause further increase in height, because

- A. Growth Hormone becomes inactive in adults
- B. Epiphyseal plates close after adolescence.
- C. Bones loose their sensitivity to Growth Hormones in adults
- D. Muscle fibres do not grow in size after birth.

Answer: B

 [Watch Video Solution](#)

175. Which of the following is an amino acid derived hormone ?

- A. Estriol
- B. Estradiol
- C. Ecdysone
- D. Epinephrine

Answer: D

 [Watch Video Solution](#)