



BIOLOGY

BOOKS - TRUEMAN'S BIOLOGY (ENGLISH)

TRANSPORT IN PLANTS

Multiple Choice Questions

1. When castor seeds are placed in a suitable medium for germination , By which of the

following first process water enters into the seed coat ?

A. Osmosis

B. Imbibition

C. Absorption

D. Root pressure

Answer: B



Watch Video Solution

2. plant imbibants are

A. hydrophobic colloids

B. hydrophilic colloids

C. chitin and suberin

D. lignin like compounds

Answer: B



Watch Video Solution

3. When raisins (Kismis) are placed in water , they swell due to the process of

A. diffusion

B. guttation

C. imbibition

D. none of these

Answer: C



Watch Video Solution

4. Resurrection plants of Selaginella and lichens remain air dry for considerable periods because they can absorb water from the slight downpour. By which physiological process water is absorbed

A. active absorption

B. plasmolysis

C. Imbibition

D. osmosis

Answer: C





5. Mushroom buttons and grass seeds often break the asphalt and concrete pavements due to

A. diffusion pressure

B. root pressure

C. imbibition pressure

D. plasmolysis

Answer: C



Watch Video Solution

6. At the time of seed germination , when water is absorbed by the seeds due to imbibition , the seed coat breaks as it swells to a lesser degree than the kernel because

A. (a) the kernal is made up of proteins, lipids and starch while the seed coat is formed of cellulose

- B. (b) the kernel is made up of cellulose while I made the seed coat up of proteins, lipids and starch
- C. (c) both kernel and seed coat are made up of same constituents, it depends on the nature of medium
- D. (d) none of the above

Answer: A



Watch Video Solution

7. Imbibition is always accompanied by swelling or increase in the volume of the imbibant . However , the increase in the volume of the imbibant is

A. more than the volume of water imbibed

B. same as the volume of the water imbibed

C. less than the volume of the water imbibed

D. it depends upon the type of imbibant

Answer: C



Watch Video Solution

8. Another term used to indicate imbibition pressure is

- A. (a) matric potential
- B. (b) absorption potential
- C. (c) turgor potential
- D. (d) chemical potential

Answer: A



Watch Video Solution

9. With the increase in temperature , the process of imbibition

A. decreases

B. increases

C. remains the same

D. no effect

Answer: B



Watch Video Solution

10. When pea seeds and wheat seeds are put in water , which of the two will imbibe more water ?

A. Wheat seeds

B. Pea seeds

C. Both will imbibe equal amount of water .

D. pea seeds imbibe water only at alkaline pH.

Answer: B



Watch Video Solution

11. Imbibition involves

A. diffusion of water

B. movement of water into imbibant through capillarity only

C. movement of water into imbibant through adsorptive as well as capillary action

D. absorption of water .

Answer: C



Watch Video Solution

12. A bottle filled with previously moistened mustard seeds and water was screw capped tightly and kept in a corner. It blew up

suddenly after about half an hour. The phenomenon involved is

A. diffusion

B. Imbibition

C. osmosis

D. D.P.D

Answer: B



Watch Video Solution

13. Dry wooden stakes, if driven into a small crack in a rock and then soaked, can develop enough pressure to split the rock . This pressure is developed due to

A. imbibition

B. exosmosis

C. plasmolysis

D. diffusion

Answer: A



Watch Video Solution

14. Maximum and minimum imbibing capacity is found in

A. Agar > Protien > Starch >

Cellulose

B. Agar > Cellulose > Protein >

Starch > Pectin > Fat

C. Cellulose > Agar > Starch > Pectin

> Fat > Protein

D. Cellulose > Protein > Pectin > Fat
> Starch > Agar .

Answer: A



Watch Video Solution

15. The ψ_w of imbibants is

A. highly negative

B. highly positive

C. zero

D. always positive

Answer: A



Watch Video Solution

16. When a bottle of scent or ammonia is opened in one corner of a room, it can be smelled at the farthest corner after sometime due to the process of diffusion . At this stage , an equilibrium is reached due to the same concentration in space . At this point .

- A. the movement of particles stops
- B. the movement of particles continues
- C. the movement of particles becomes very fast
- D. none of the above .

Answer: B



Watch Video Solution

17. The relative rates of diffusion of substances are

A. inversely proportional to the square root of their densities

B. directly proportional to the square root of their densities .

C. there is no relation between diffusion and density

D. independent of the density of medium

Answer: A



Watch Video Solution

18. The rate of diffusion is dependent upon the permeability of the medium , it however ,

A. influences the final equilibrium of diffusion as it is never reached if the medium is dense

B. does influence the final equilibrium of
diffusion

C. does not influence the final equilibrium
of diffusion

D. none of the above .

Answer: C



Watch Video Solution

19. The translocation of substances inside a cell and over short distances in the symplast is due to the process of

A. Osmosis

B. Imbibition

C. diffusion

D. none of the above .

Answer: C



Watch Video Solution

20. The diffusion pressure of an individual substance during independent diffusion is known as

A. diffusion pressure

B. partial pressure

C. osmotic pressure

D. turgor pressure

Answer: B



Watch Video Solution

21. Selectively (differentially) permeable membrane is that which allows

A. all the solute particles to pass through it

B. none of the solute particles to pass through it

C. some of the solute particles to pass through it and prevent others

D. all the solute particles to pass through it in the beginning for 5-10 minutes , then

the rate declines

Answer: C



Watch Video Solution

22. The membrane which allows only water molecules to pass through it and no solute molecules is called

A. semipermeable membrane

B. selectively permeable

C. impermeable membrane

D. permeable membrane

Answer: A



Watch Video Solution

23. The value of osmotic potential of an electrolyte is always

A. more than non electrolyte

B. less than non electrolyte

C. same as non electrolyte

D. none of the above .

Answer: A



Watch Video Solution

24. The plasmalemma of the cell is a

A. fully permeable membrane

B. selectively permeable membrane

C. semipermeable membrane

D. impermeable membrane

Answer: B



Watch Video Solution

25. The main difference in DPD and Ψ_W is

A. DPD has negative and Ψ_W has positive value.

B. DPD depends on concentration of solvent whereas Ψ_W on concentration of

solute.

C. The direction of movement is from low

DPD to high DPD but in Ψ_W it is from

high Ψ_W to low Ψ_W .

D. All of the above .

Answer: C



Watch Video Solution

26. When a flaccid cell (e.g., grape raisin) is placed in water

- A. its OP increases
- B. its TP increases
- C. its DPD increases
- D. All of the above .

Answer: B



Watch Video Solution

27. Which has maximum diffusion pressure ?

A. Water

B. Distilled water

C. 1 M sugar solution

D. 1 M NaCl solution

Answer: B



Watch Video Solution

28. Which cell has maximum diffusion pressure deficit ?

- A. (a) Flaccid cell
- B. (b) Turgid cell
- C. (c) Prokaryotic cell
- D. (d) Eukaryotic cell

Answer: A



Watch Video Solution

29. Cell sap is

- A. a dilute solution of minerals and some organic substances in the vacuole.
- B. a dilute solution of minerals in water absorbed by the plant from the soil .
- C. exudate from the cell
- D. a solution of different organic substances dissolved in the cytoplasm.

Answer: A



Watch Video Solution

30. A cell placed in 0.5 M sugar solution was found to be with no change in cell volume. If the same cell is placed in 0.5 M of sodium chloride solution , then there will be

- A. increase in cell volume
- B. decrease in cell volume
- C. no change in volume
- D. bursting of the cell

Answer: B



Watch Video Solution

31. When osmotic pressure becomes equal to the wall pressure, then

- A. flow of water will be inside the cell
- B. flow of water will be outside the cell
- C. there will be no net flow of water
- D. none of the above .

Answer: C



Watch Video Solution

32. If a cell A with $DPD = 5$ bars is connected to cells B , C and D whose OP and TP are respectively 5 and 5, 10 and 4 and 8 and 3 the flow of water will be

A. B to A,C,D

B. A to D,B,C

C. C to A,B,D

D. A to B,C,D

Answer: A



Watch Video Solution

33. If in an osmotic system, one chamber (A) has $\Psi_w - 2000KP_a$ while the other (B) has $-1000 KP_a$, which chamber has dilute solution ?

A. Chamber A

B. Chamber B.

C. Both chambers have equal concentration.

D. Data insufficient

Answer: B



Watch Video Solution

34. When certain solute particles are added to the pure solvent the diffusion pressure of

resulting solution is lowered by an amount expressed in term of

- A. Turgor pressure (T.P.)
- B. Diffusion pressure (D.P.)
- C. Osmotic pressure (O.P.)
- D. Diffusion pressure deficit (D.P.D.)

Answer:



Watch Video Solution

35. A cell will absorb water and show deplasmolysis when it is immersed in

- A. isotonic solution
- B. hypertonic solution
- C. hypotonic solution
- D. any of the above

Answer: C



Watch Video Solution

36. The value of osmotic pressure becomes equal to turgor pressure when a cell is placed in a

A. hypertonic solution

B. hypotonic solution

C. isotonic solution

D. both (1) and (2)

Answer: B



Watch Video Solution

37. The value of osmotic pressure becomes equal to diffusion pressure deficit when a cell is placed in a

A. hypertonic solution

B. hypotonic solution

C. isotonic solution

D. both (2) and (3)

Answer: A



Watch Video Solution

38. The simple phenomenon of shrinkage of the protoplasm from the cell wall under the action of some strong solution (than that of the cell sap) is due to decrease in

- A. root pressure
- B. turgor pressure
- C. DPD
- D. osmotic pressure

Answer: B



Watch Video Solution

39. The diffusion pressure deficit of a cell protoplasm is equal to

A. wall pressure

B. turgor pressure

C. osmotic pressure

D. suction pressure

Answer: D



Watch Video Solution

40. The osmotic pressure of pure and clean water is

A. 0

B. 1

C. 2

D. 10

Answer: A



Watch Video Solution

41. Which of the following has the higher water potential ?

A. 1M salt solution

B. 1 M sugar solution

C. Distilled water

D. All have equal water potential

Answer: C



Watch Video Solution

42. During absorption of water by roots , the water potential of cell sap is lower than that of

A. pure water and soil solution .

B. neither pure water nor soil solution .

C. pure water but higher than that of soil solution .

D. Soil solution but higher than that of pure water

Answer: A



Watch Video Solution

43. An osmotically active substance is that which can

A. cause osmotic entry of some solutes

into it

B. cause osmotic entry of solutes as well as

solvent into it

C. cause an osmotic entry of water into it

D. all are correct

Answer: C



Watch Video Solution

44. The relationship of DPD , OP , TP and WP is

- A. $DPD = OP - TP(WP)$
- B. $DPD = -OP + TP(WP)$
- C. $DPD = OP + TP(WP)$
- D. $DPD = -OP - WP(TP)$

Answer: A



Watch Video Solution

45. A cell is plasmolysed after being kept in hypertonic solution . What will be present between cell wall and plasmalemma ?

- A. isotonic solution
- B. hypertonic solution
- C. Air
- D. Hypotonic solution

Answer: B



Watch Video Solution

46. The potential energy of water is referred to as

- A. water potential
- B. osmotic potential
- C. gravity of potential
- D. pressure potential

Answer: A



47. Addition of a solute to pure water causes

- A. negative water potential
- B. more negative water potential
- C. positive water potential
- D. more positive water potential

Answer: A



48. Water potential and osmotic potential of pure water are

A. zero and 100

B. 100 and zero

C. zero and zero

D. 100 and 100

Answer: C



Watch Video Solution

Cell A	Cell B
$\Psi_w = -1200 \text{ kPa}$	$\Psi_w = -800 \text{ kPa}$
$\Psi_s = -2000 \text{ kPa}$	$\Psi_s = -1400 \text{ kPa}$

49.

What would be Ψ_P in cell A and cell B respectively ?

- A. + 300, + 400kPa
- B. - 300, - 400kPa
- C. - 1100, - 1600kPa
- D. 900, + 600kPa

Answer: A



View Text Solution

50. Cell A has osmotic potential of -18 bars and pressure potential of 8 bars, whereas, cell B has osmotic potential of -14 bars and pressure potential 2 bars. The direction of flow of water will be

A. A to B

B. No movement

C. B to A

D. Equal movement in both direction.

Answer: C



Watch Video Solution

51. If a cell loses water its D.P.D.

- A. decreases
- B. increases
- C. remains same
- D. either (1) and (2)

Answer: B



Watch Video Solution

52. A cell 'A' has $\Psi_W = -18$ bars and its adjacent cell 'B' has a water potential to -23 bars . Which cell has higher Ψ_W and what will be the direction of movement of water is

- A. cell A p, from B to A
- B. cell A , from A to B
- C. cell B, in either direction
- D. cell B , no net movement

Answer: B



Watch Video Solution

53. Water potential of a solution is always

A. less than zero

B. zero

C. more than zero

D. unity

Answer: A



Watch Video Solution

54. When the cell is turgid

A. (a) $\Psi_P > \Psi_S$

B. (b) $\Psi_P < \Psi_S$

C. (c) $\Psi_P = \Psi_S$

D. (d) $\Psi_P \neq \Psi_S$

Answer: C



Watch Video Solution

55. Reduction of water potential due to presence of solute is

- A. (a) turgor potential
- B. (b) matric potential
- C. (c) pressure potential
- D. (d) osmotic potential

Answer: D



Watch Video Solution

56. If a plant cell has Ψ_S value of -10 bar and Ψ_P value of +5 bar ,its water potential (Ψ_W) will be

A. + 5 bar

B. - 5 bar

C. + 15 bar

D. - 50 bar

Answer: B



Watch Video Solution

57. Which one is correct ?

A. $\Psi_m = \Psi_p + \Psi_s + \Psi_w$

B. $\Psi_w = \Psi_p + \Psi_s + \Psi_m$

C. $\Psi_p = \Psi_w + \Psi_m + \Psi_s$

D. all are correct

Answer: B



Watch Video Solution

58. Plant cells do not burst in distilled water because

A. cell wall is elastic , rigid and gets stretched

B. cell wall is living

C. cell wall is the outermost layer in plant cell

D. cell wall is permeable

Answer: A



59. If cell (A) with $OP = 5$ and $TP = 4$ is surrounded by cells with $OP = 3$ and $TP = 1$, what will be the direction of water movement ?

A. From cell A to other cells

B. From other cells to cell A

C. Water will not move

D. Water will move in both the directions in equal amounts

Answer: A



Watch Video Solution

60. The actual pressure with which water enters into the cell is called

A. (a) DPD has negative and Ψ_W has positive value.

B. (b) Osmotic potential

C. (c) Water potential

D. (d) Diffusion

Answer: A



Watch Video Solution

61. If the plant cell is immersed in water, the water continues to enter the cell until the

A. (a) concentration of salts is the same
inside the cell as outside

B. (b) cell bursts

C. (c) diffusion pressure deficit is the same
inside the cell as outside

D. (d) concentration of water is the same
inside the cell as outside

Answer: C



Watch Video Solution

62. A cleaned goat bladder is filled with a syrup
and immersed in water . The volume of
syrup or liquid within the bladder will

A. increase

B. decrease

C. remains the same

D. undergo plasmolysis .

Answer: A



Watch Video Solution

63. Bacteria cannot survive in a highly salted pickle because

A. salt inhibits their multiplication

B. they get plamolysed and die

C. nutrients in pickle cannot support life

D. no photosynthesis occurs in pickle

Answer: B



Watch Video Solution

64. Purple cabbage leaves do not loose their colour in cold water but do so in boiling water because

A. hot water enters the cell faster

B. pigment is not soluble in cold water

C. hot water destroys the cell walls

D. hot water kills plasmalemma and makes
it permeable

Answer: D



Watch Video Solution

65. Which is possible for a fully turgid cell ?

A. (a) $DPD = 10 \text{ atm}$, $OP = 15 \text{ atm}$, $TP = 5 \text{ atm}$

B. (b) $DPD = 0.2 \text{ atm}$, $OP = 0.7 \text{ atm}$, $TP = 0.5$

atm

C. (c) $DPD = 0.0 \text{ atm}$, $OP = 15 \text{ atm}$, $TP = 15 \text{ atm}$

D. (d) $DPD = 5 \text{ atm}$, $OP = 12 \text{ atm}$, $TP = 7 \text{ atm}$

Answer: C



Watch Video Solution

66. The plants that send their roots upto fringe of the water table due to the deficiency of air are called

A. hydrophytes

B. phreatophytes

C. mesophytes

D. halophytes

Answer: B



Watch Video Solution

67. Root hairs absorb water when

A. transpiration is low

B. soil solution is isotonic

C. salt concentration of cell sap is high

D. salt concentration of soil is high.

Answer: C



Watch Video Solution

68. The root hairs absorb from soil

A. percolating water

B. capillary water

C. hygroscopic water surrounding each soil
particle

D. water from the water table

Answer: B



Watch Video Solution

69. In submerged hydrophytes, the absorption of water takes place through

A. root

B. stem

C. leaf

D. general surface of plant .

Answer: D



Watch Video Solution

70. The water available to the plant for absorption is

A. Holard

B. Chresard

C. Echard

D. Ground water

Answer: B



Watch Video Solution

71. Bulk of water requirement of plant is met through the process of

- A. (a) active absorption
- B. (b) passive absorption
- C. (c) root pressure
- D. (d) imbibition

Answer: B



Watch Video Solution

72. Plasmodesmata connections help in movement of substances between cells. They form

- A. (a) apoplast
- B. (b) symplast
- C. (c) cytoplasmic streaming
- D. (d) all of these

Answer: B



Watch Video Solution

73. Cold soils are considered to be

- A. physically dry
- B. heavy soils
- C. physiologically dry
- D. acidic soils

Answer: C



Watch Video Solution

74. A water - logged soil is considered to be physiologically dry because of

- A. decreased viscosity of water
- B. increased viscosity of water
- C. abundance of salts
- D. anaerobic conditions

Answer: D



Watch Video Solution

75. Which is influenced by opening and closing of stomata ?

- A. Active water absorption
- B. Passive water absorption
- C. Guttation
- D. Rate of growth

Answer: B



Watch Video Solution

76. During passive absorption of water , the forces originate in

A. root itself

B. shoot

C. both root and shoot

D. apical bud

Answer: B



Watch Video Solution

77. Mark the correct statement .

A. Passive absorption of water continues day and night and in all seasons.

B. Passive absorption of water occurs during the day and stops at night in all seasons.

C. Passive absorption of water occurs during the night and stops during the day time in all seasons.

D. Passive absorption of water is maximum during morning and evening in all seasons .

Answer: A



Watch Video Solution

78. The influence of metabolic inhibitors on the process of passive absorption of water is

A. little and that too indirect

B. little and direct effect

C. strong and indirect

D. strong and direct

Answer: A



Watch Video Solution

79. The rate of water absorption is considered to be approximately equal to the rate of

A. photosynthesis

B. transpiration

C. respiration

D. guttation

Answer: B



Watch Video Solution

80. When soils are deficient in oxygen and have high proportion of salts or toxic substances the process of active absorption

A. increases

B. remains unaffected

C. decreases

D. stops

Answer: C



Watch Video Solution

81. Root pressure occurs due to

A. low DPD of leaves

B. high DPD of leaves

C. osmotic flow of water into xylem and
absorbing part of root

D. imbibitional flow of water into xylem of
absorbing part of root .

Answer: C



Watch Video Solution

82. To develop root pressure , energy is used to

A. actively transport minerals into root cells

B. evaporate water in the leaves

C. condense water in the xylem

D. create suction in the xylem.

Answer: A



Watch Video Solution

83. Root pressure is maximum when

A. absorption is high but transpiration is low

B. absorption is high but transpiration is high

C. both absorption and transpiration is high

D. both absorption and transpiration is low.

Answer: A



Watch Video Solution

84. When aerial parts of a plant are cut the sap exudes from the root with a force , the phenomenon underlying this is

- A. imbibition pressure
- B. root pressure
- C. osmotic pressure
- D. capillary force

Answer: B



Watch Video Solution

85. The energy source that mainly drives the upward flow of water is

A. light

B. sucrose

C. solar heat

D. glucose

Answer: C



Watch Video Solution

86. According to Dixon and Jolly's Cohesion

Theory the channel for ascent of sap is

A. xylem parenchyma

B. lumen of vessels and tracheids of xylem

C. xylem fibre

D. cortical cells

Answer: B



Watch Video Solution

87. In a branch cut from a rapidly transpiring plant , water snaps away from the cut end . It shows that

- A. it is under tension
- B. it is in excess in vessels
- C. it has been absorbed by capillary force
- D. it has been absorbed by imbibition force.

Answer: A



Watch Video Solution

88. The osmotic pressure of the leaf cells is maximum in the afternoon, this shows relation with the

- A. (a) high rate of respiration
- B. (b) high rate of photosynthesis
- C. (c) high rate of fat metabolism
- D. (d) upward movement of water in plants

Answer: D



Watch Video Solution

89. Root pressure does not take an active part in the ascent of sap because

A. it is not found in all the plants and water can rise in the absence of roots .

B. it is seen during most favourable periods like spring or rainy season.

C. it is never found to exist in the plants .

D. (1) and (2) are correct.

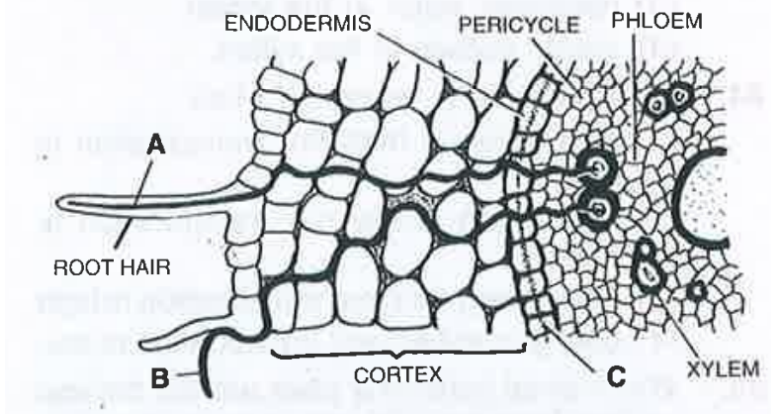
Answer: D



Watch Video Solution

90. In the given TS of root , what part A,B and

C



A. A-Symplast , B-Apoplast , C-Casparian strip

B. A-Apoplast , B-Symplast , C-Endodermis

C. A-Vascular path , B- membrane pathway , C-pericycle

D. A-Transmembrane , B-Capillary , C-Endodermis

Answer: A



Watch Video Solution

91. Cohesion transpiration pull theory operates in

- A. passive water absorption
- B. active water absorption
- C. conditions favouring guttation
- D. conditions restricting transpiration

Answer: A



Watch Video Solution

92. Which contributes most to the transport of water from the soil to the leaves of a tree ?

A. Root pressure

B. Cohesion of water and transpiration pull

C. Capillary rise of water inside xylem

D. Hydrolysis of ATP

Answer: B



Watch Video Solution

93. Movement of H_2O through cell wall is called

A. Symplast

B. Apoplast

C. Tonoplast

D. All of these

Answer: B



Watch Video Solution

94. Water lost by transpiration is

- A. pure water
- B. rich in dissolved salts
- C. rich in dissolved minerals
- D. none of the above .

Answer: A



Watch Video Solution

95. Cobalt chloride is blue in anhydrous state .

In contact with water vapours it turns

A. red

B. violet

C. pink

D. yellow

Answer: C



96. Which of the following amphistomatous leaves would dry up last ?

- A. Both surfaces ungreased
- B. Both surfaces greased
- C. Upper surface greased
- D. Lower surfaces greased

Answer: B



97. Sunken stomata are mainly seen in leaves of

A. hydrophytes

B. xerophytes

C. mesophytes

D. epiphytes

Answer: B



Watch Video Solution

98. In terrestrial habitats , temperature and rain fall conditions are influenced by

A. photoperiodism

B. transpiration

C. thermoperiodism

D. translocation

Answer: B



Watch Video Solution

99. Main function of lenticel is

- A. (a) transpiration
- B. (b) guttation
- C. (c) gaseous exchange
- D. (d) translation

Answer: C



Watch Video Solution

100. Apart from stomata through which other way can oxygen enter the plants ?

- A. Through leaf tips
- B. Through a hole in the stem
- C. Through lenticles
- D. Through scars on the leaves

Answer: C



Watch Video Solution

101. Transpiration in plants is

- A. not very important
- B. immaterial for them
- C. a serious burden
- D. a necessary evil

Answer: D



Watch Video Solution

102. Transpiration from the plants would be most rapid when

- A. there is lot of humidity in the atmosphere
- B. the air is still
- C. there is excess of water in the sky
- D. environmental conditions are dry

Answer: D



Watch Video Solution

103. When stomata open only at night they are called

A. photoactive

B. scotoactive

C. nyctinastic

D. helioactive

Answer: B



Watch Video Solution

104. Which of the following is not a function of transpiration ?

- A. Cooling of leaves
- B. Uptake of minerals
- C. Excretion of minerals
- D. Uptake of water

Answer: C



Watch Video Solution

105. The high amount of malate in guard cells of open stomata accumulates by the hydrolysis of

A. glucose

B. lignin

C. cellulose

D. starch

Answer: D



Watch Video Solution

106. The lowest water potentials in the xylem are in the

- A. root hairs
- B. vascular cylinders of roots
- C. tracheids of the stem
- D. transpiring leaves .

Answer: D



Watch Video Solution

107. Transpiration rate of a dorsiventral leaf is

- A. higher on the lower surface
- B. higher on the upper surface
- C. equal on both the surfaces
- D. dependent upon species.

Answer: A



Watch Video Solution

108. Loss of water by cells without external sign of leaf drooping is called

- A. nascent wilting
- B. temporary wilting
- C. incipient wilting
- D. permanent wilting

Answer: C



Watch Video Solution

109. Permanent wilting can be overcome by

A. increasing relative humidity

B. supplying water to the soil around the
plant

C. supplying antitranspirants

D. All of the above .

Answer: D



Watch Video Solution

110. Wilting occurs when

A. rate of transpiration is higher than absorption

B. rate of absorption is higher than transpiration

C. excess root pressure

D. high relative humidity of air

Answer: A



Watch Video Solution

111. Which is incorrect for wilting ?

A. It occurs in woody parts

B. It occurs in herbaceous plants.

C. Older leaves usually wilt before younger
leaves

D. All of the above .

Answer: A



Watch Video Solution

112. Mark the correct statement .

A. The osmotic pressure of guard cells is highest when the stomata are open and the lowest when the stomata are closed.

B. The osmotic pressure of guard cells is lowest when the stomata are open and the highest when the stomata are closed.

C. The osmotic pressure of guard cells and epidermal cells surrounding it never matters for the opening of stomata .

D. (2) and (3) are correct

Answer: B



Watch Video Solution

113. The hormone which promotes the outflow of potassium from guard cells is

A. IAA

B. gibberellins

C. ethylene

D. abscisic acid

Answer: D



Watch Video Solution

114. The hormones which help in the intake of K^+ ions by guard cells and hence speed up the opening of stomata are

A. cytokinins

B. auxins

C. gibberellins

D. ethylene

Answer: A



Watch Video Solution

115. A leaf with hair on its surface

A. increases transpiration

B. reduces transpiration

C. reduces guttation

D. reduces exchange of gases .

Answer: B



Watch Video Solution

116. Excess of CO_2 in the plant will

A. enhance the transpiration

B. reduces the transpiration

C. have no effect

D. reduce transpiration provided the temperature is $25^{\circ}C$

Answer: B



Watch Video Solution

117. Smaller plants lose more water per unit area of leaf as compared to the larger plants due to

A. high root Shoot ratio in former

B. low Root Shoot ratio in former

C. more stomatal frequency

D. value of stomatal index is high .

Answer: A



Watch Video Solution

118. Which one will reduce rate of transpiration ?

- A. Rise in temperature .
- B. Increase in water uptake .
- C. Decrease in relative humidity .
- D. Decrease in light intensity

Answer: D



Watch Video Solution

119. A passive hydathode comprises a group of loosely arranged colourless and parenchymatous cells known as

A. spongy parenchyma

B. aerenchyma

C. epithem

D. prosenchyma

Answer: C



Watch Video Solution

120. The water that comes out during guttation is

A. a solution containing many organic and inorganic substances

B. a solution containing organic substances

C. a solution containing inorganic substances

D. pure water .

Answer: A



Watch Video Solution

121. Which is the most important factor in regulation of transpiration

A. Temperature

B. Humidity

C. Light

D. Wind

Answer: A



Watch Video Solution

122. Antitranspirants

A. reduce the rate of transpiration without affecting carbon assimilation

B. reduce the rate of transpiration affecting carbon assimilation

C. reduce the rate of transpiration affecting growth of plant

D. reduce the rate of transpiration affecting protein synthesis of plant.

Answer: A



Watch Video Solution

123. Spraying the plant surfaces with silicon emulsion and phenyl mercuric acetate results in

- A. increased transpiration
- B. decrease in transpiration
- C. increase in photosynthesis
- D. increase in respiration

Answer: B



Watch Video Solution

124. Percentage of water leaf in the soil when plant wilts is known as

- A. chresard
- B. wilting coefficient
- C. field capacity
- D. holard

Answer: B



125. What is the action spectrum of transpiration ?

A. Green and ultra violet

B. Orange and red

C. Blue and far red

D. Blue and red

Answer: D



126. Which is produced during water stress that brings stomatal closure?

A. ethylene

B. Abscisic acid

C. ferulic acid

D. Coumarin

Answer: B



Watch Video Solution

127. An important factor in stomata opening is

- A. hormone content of cells
- B. protein content of cells
- C. chlorophyll content of cells
- D. shape of guard cells

Answer: D



Watch Video Solution

128. Which of the following wall of guard cells is thick

A. Lateral

B. Inner (ventral concave)

C. Outer (dorsal convex)

D. All of these

Answer: B



Watch Video Solution

129. What shall be the sequence of events during wilting of a plant

A. Endosmosis → Plasmolysis →
Temporary wilting → Permanent
wilting

B. Exosmosis → Plasmolysis →
Temporary wilting → Permanent
wilting

C. Exosmosis → Imbibition →
Plasmolysis → Temporary wilting

→ Permanent wilting

D. Exosmosis → Plasmolysis →

Deplasmolysis → Temporary wilting

→ Permanent wilting

Answer: B



Watch Video Solution

130. Conversion of starch to organic acids is required for

A. stomatal opening

B. stomatal closure

C. stomal formation

D. hydrothode functioning

Answer: A



Watch Video Solution

131. Enzyme connected with opening and closing of stomata is

A. Rubisco

B. PEP carboxylase

C. α - amylase

D. pyruvic kinase

Answer: B



Watch Video Solution

132. Match the apparatus with function

- | | |
|-----------------|---|
| a. Porometer | i. Apparatus used for measuring the rate of transpiration |
| b. Potometer | ii. Instrument for measuring relative humidity |
| c. Manometer | iii. Apparatus used for knowing relative size of stomata |
| d. Psychrometer | iv. Instrument used for measuring pressure |

A. 1) a-iv, b-i, c-ii, d-iii

B. 2) a-iii, b-i, c-iv, d-ii

C. 3) a-ii, b-iv, c-i, d-iii

D. 4) a-ii, b-iii, c-iv, d-i

Answer: B



Watch Video Solution

133. Lenticels and hydathodes are small pores with following common attributes

- A. they remain open
- B. they allow exchange of gases
- C. they always remain closed

D. they are found on the same organs of
plants

Answer: A



Watch Video Solution

134. Epithem is

A. associated with guttation

B. a group of loosely arranged green
parenchymatous cells

C. found over the tip of a petiole

D. all of the above .

Answer: A



Watch Video Solution

135. Epidermal cells containing chloroplasts are

A. Hydathode

B. Stomata

C. Guard cell

D. Epithem

Answer: C



Watch Video Solution

136. Match the experiment listed under Column I with the aim of the experiment in

Column II.

<i>Column I</i>	<i>Column II</i>
a. Girdling experiment	p. active transport
b. Cobalt chloride paper method	q. mass flow hypothesis
c. Carrier protein	r. unequal transpiration on leaf surfaces
d. Munch	s. translocation in phloem

A. $a=r, b=p, c=s, d=q$

B. $a=s, b=r, c=p, d=q$

C. $a=s, b=p, c=q, d=r$

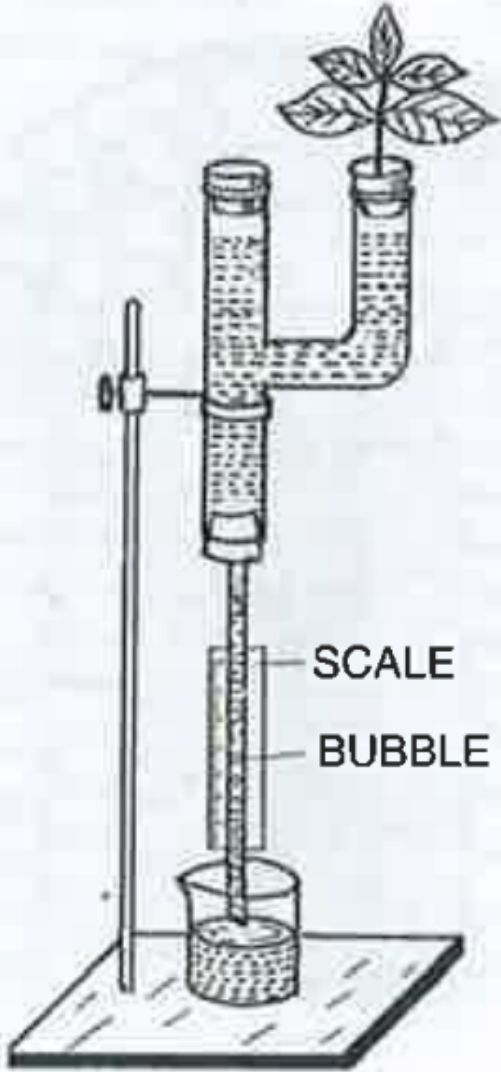
D. $a=q, b=p, c=s, d=r$

Answer: B



Watch Video Solution

137. The experiment set up shown in the following diagram is for



A. the demonstration of apoplastic pathway

B. measuring the rate of transpiration

C. the demonstration of mass flow

D. the demonstration of anaerobic
respiration

Answer: B



Watch Video Solution

138. In which of the following plants , there will
be no transpiration ?

A. submerged aquatic plants

B. Plants living in plains

C. Aquatic plants with floating leaves

D. Plants growing in hilly regions

Answer: A



Watch Video Solution

139. Oozing out of water drops from injured edges or tips is

A. bleeding

B. guttation

C. transpiration

D. oozation

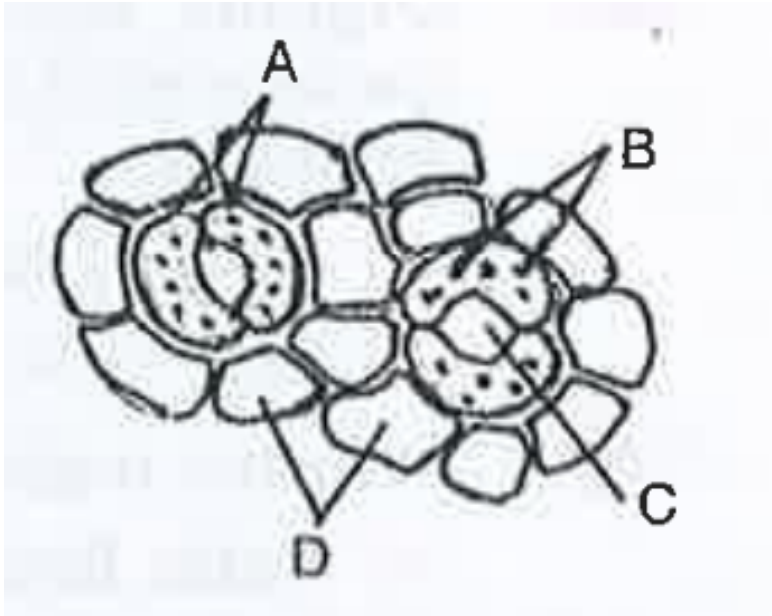
Answer: A



Watch Video Solution

140. The following figure shows the stomatal apparatus . Identify the parts labelled as A,B,C and D . Choose the correct answer from the

following



A. A=Guard cells , B=Stoma, C=Chloroplasts ,
D=Subsidiary cells

B. A=Subsidiary cells , B=Chloroplasts ,
C=Stoma, D=Guard cells

C. A=Guard cells, B=Chloroplasts, C=Stoma,

D=subsidiary cells

D. A=subsidiary cells, B=Stoma, C=

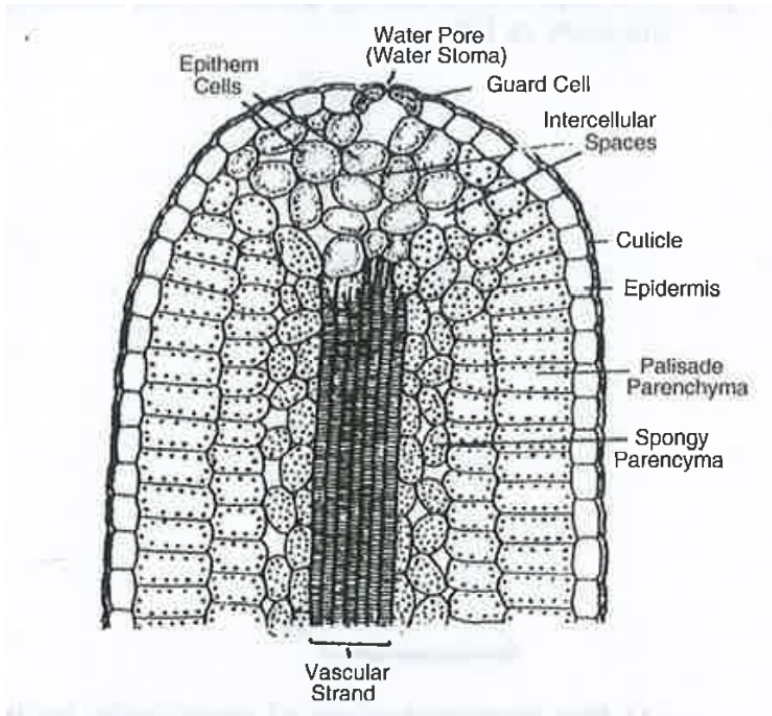
Chloroplasts , D=Guard cells

Answer: C



Watch Video Solution

141. The given diagram is of



A. Hydathode

B. Stomata

C. Lenticel

D. Porometer

Answer: A



Watch Video Solution

142. At the time of active growth (formation of buds and flowers) a part of the stored food also moves upward through

A. xylem

B. phloem

C. parenchyma

D. both xylem and phloem

Answer: A



Watch Video Solution

143. For conducting girdling experiments

A. the cortex is removed

B. the cortex and primary phloem and
removed

C. all tissues upto secondary xylem are removed

D. none of the above

Answer: C



Watch Video Solution

144. Organic substances such as sugars are translocated in the phloem. It can be demonstrated by

A. defoliation

B. ringing the stem

C. root pressure

D. grafting

Answer: B



Watch Video Solution

145. Munch's mass flow hypothesis explains

A. water flow in xylem

B. horizontal flow of water from cortex to xylem

C. translocation of solutes through phloem

D. absorption of water by roots .

Answer: C



Watch Video Solution

146. Loading of phloem is related to

A. increase of sugar in phloem

B. elongation of phloem cells

C. separation of phloem parenchyma

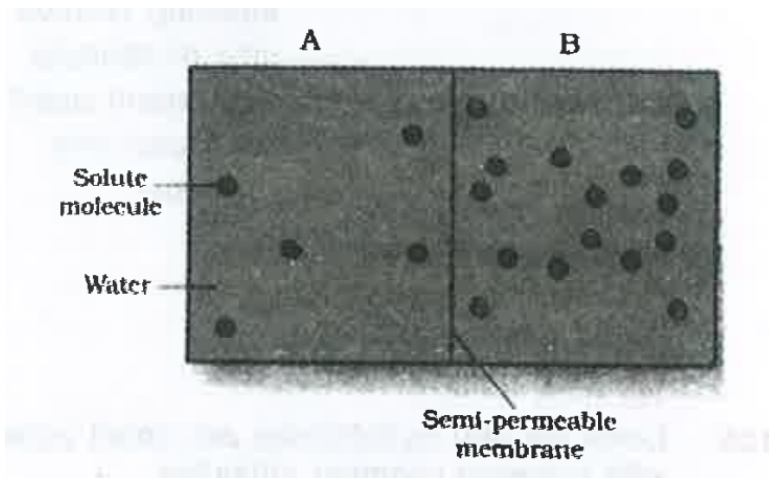
D. strengthening of phloem fibres

Answer: A



Watch Video Solution

147. Given below is a figure of solution A & B .



Which of the following are true for solution B

- (i) Solution B has a higher water potential
- (ii) Solution B has lower solute potential
- (iii) Solution B has higher DPD
- (iv) Solution B has lower OP
- (v) Its Ψ_s has a negative value

A. (i),(ii),(iv) & (v)

B. (ii),(iii) & (v)

C. (i),(ii),(iii) & (iv)

D. (i),(iii) & (iv)

Answer: B



Watch Video Solution

148. Given below some properties of transport mechanism. Which of these are true for the facilitated transport

(i) Require ATP energy

(ii) Highly selective

(iii) Uphill transport

(iv) Requires special membrane proteins

(v) Transport saturates

A. (i),(ii),(iii) ,(iv)

B. (ii),(iv),(v)

C. (i),(iii),(v)

D. (ii),(iii),(iv),(v)

Answer: B



149. Water potential in leaf tissue is 'positive' (near zero) during

A. Low transpiration

B. Excessive transpiration

C. Guttation

D. All of the above .

Answer: C



150. Most of the water lost by the plant through transpiration exist through the stomatal pores . Which of the following statements about transpiration and stomatal functioning is false ?

- A. Stomata normally open in response to a shift from dark to light conditions
- B. When the turgor pressure of guard cells increases , the stomatal aperture opens

C. With the shift from dark to light , the osmotic potential becomes less negative resulting in stomatal closure

D. The turgor pressure of guard cells increases after the osmotic potential becomes more negative

Answer: C



Watch Video Solution

151. Consider the following statements

1. Xylem vessels are semi-permeable
2. Sieve tubes translocate only solutes
3. Xylem vessels do not have a turgor pressure
4. Companion cells help in maintaining pressure gradient in the sieve tubes .

Which of the statements given above are correct ?

A. 1 and 2

B. 2 and 3

C. 1 and 3

D. 2 and 4

Answer: D



Watch Video Solution

152. Consider the following events involved in stomatal opening

1. Turgor pressure of guard cells increases
2. K^+ ions move into guard cells
3. Formation of malic acid
4. Water moves into guard cells

What is the correct sequence of these events leading to opening of stomata ?

A. 2-4-3-1

B. 3-2-4-1

C. 2-3-4-1

D. 3-1-2-4

Answer: B



Watch Video Solution

153. Consider the following statements

Osmosis is a process of transport of water across a semipermeable membrane ,

1. Down the water potential gradient .
2. Up the water potential gradient .
3. Actively
4. Passively

Of these statements

- A. 1 and 3 are correct
- B. 2 and 3 are correct
- C. 2 and 4 are correct

D. 1 and 4 correct

Answer: D



Watch Video Solution

154. Which of the following molecules is capable of generating the greatest osmotic pressure ?

A. (a) 300 mM glucose

B. 300 mM urea

C. 300 *mMNaCl*

D. 300 mM *CaCl₂*

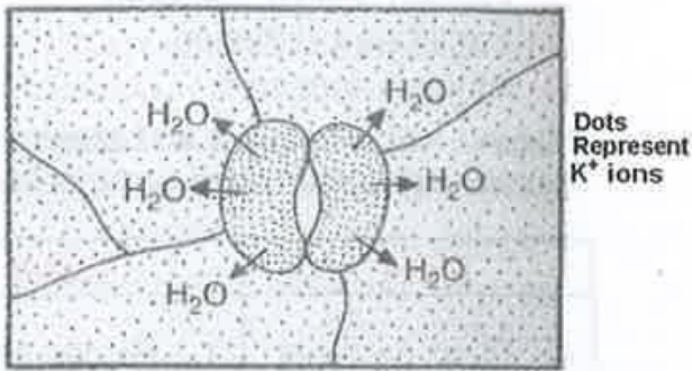
Answer: D



Watch Video Solution

155. The diagram illustrates stomatal closing .

The major mistake in the digram is



- A. The water should move inside the guard cells
- B. The peripheral walls of the guard cells should be thicker
- C. The concentration of the K^+ should be equal on both inside the outside

D. The concentration of the K^+ should be more outside the guard cells

Answer: D



Watch Video Solution

156. Pressure potential of a plant cell and its turgor pressure are

A. Numerically equal but first is in negative and second in positive value

B. Numerically equal and both positive

C. Numerically equal but first is positive
and second negative

D. Both are numerically different and are
negative

Answer: B



Watch Video Solution

157. In simple osmotic systems, at constant temperatures , the water potential results from the combined but opposite actions of

A. Relative humidity & pressure potential

B. Pressure potential and saturation

C. Saturation vapour pressure and osmotic potential

D. Osmotic potential and pressure potential

Answer: D



Watch Video Solution

158. Addition of KCN reduces the rate of water absorption in the root. This indicates the water absorption is a/an:

- A. Passive process
- B. Energy dependent process
- C. Osmotic difference dependent process
- D. Exchange diffusion process

Answer: B



Watch Video Solution

159. The carrier - mediated cotransport in which a solute is actively transported across a membrane against the gradient of electrochemical potential by coupling the uphill transport of one solute to the downhill transport of another in an example of

A. Symport transport

B. Primary active transport

C. Facilitated diffusion

D. Antiport transport

Answer: D



Watch Video Solution

160. Match List -I with List -II and select the correct answer using the codes given below

the lists

List-I	List-II
A. Field capacity	1. Forces which hold water to the soil.
B. Permanent wilting	2. Combined effect of accelerated water loss and retarded water absorption.
C. Water deficit	3. Water content of a soil
D. Soil moisture tension	4. Loss of water from plant with little chance of regaining turgidity

A. *A B C D*
3 4 2 1

B. *A B C D*
1 2 3 4

C. *A B C D*
2 4 3 1

D. *A B C D*
3 1 2 4

Answer: A



Watch Video Solution

161. A minimum ratio of transpiration to photosynthesis will be observed on a

- A. Humid and cloudy day
- B. Humid and sunny day
- C. Sunny day with no winds
- D. Sunny day with strong winds

Answer: B



Watch Video Solution

162. LAR or leaf area ratio is the total area of leaves per total plant weight . It tends to be largest in

- A. (a) hydrophytes
- B. (b) Mesophytes
- C. (c) Xerophytes
- D. (d) halophytes

Answer: A



Watch Video Solution

163. The osmotic pressure of 0.1 M glucose and 0.1 M sucrose solution are the same because

A. Both are carbohydrates

B. These are different compounds having different molecular weights

C. Both are present in the same concentration

D. Glucose is reducing sugar while sucrose is non-reducing sugar

Answer: C



Watch Video Solution

164. Addition of chemical fertilizers claims increased irrigation to avoid development of

- A. (a) excessive solute potential in soil
- B. (b) air spaces that may cause oxidation of fertilizers
- C. (c) bacteria that may decompose useful salts
- D. (d) larger root caps on the tender tips of branches of roots

Answer: A



Watch Video Solution

165. During the opening of stomata, the organic malate ions are produced in the guard cells for maintaining the

A. (a) Negative voltage to take in potassium ions

B. (b) Photosynthetic products in active osmotic form

C. (c) Calcium ions in lesser concentration

D. (d) Respiratory pathway in aerobic mode

Answer: A



Watch Video Solution

166. The translocation of organic solutes in sieve tube members is supported by

- A. Mass flow involving a carrier and ATP
- B. Cytoplasmic streaming
- C. Root pressure and transpiration pull
- D. P-proteins

Answer: D



Watch Video Solution

167. Sinks are related to

A. transport of materials

B. stomata

C. enzymes

D. phytochrome

Answer: A



Watch Video Solution

168. When the concentration of the soil solutes is low, the absorption of water

A. remains normal

B. is stopped

C. is increased

D. is decreased

Answer: C



169. Guard cells help in

- A. guttation
- B. Fighting against infection
- C. Protection against grazing
- D. Transpiration

Answer: D



170. The water potential increases due to

A. addition of solutes

B. pressure

C. guttation

D. condensation

Answer: B



Watch Video Solution

171. Translocation of sugars in flowering plants occurs in the form of

A. glucose

B. fructose

C. sucrose

D. lactose

Answer: C



Watch Video Solution

172. Plasmolysis occurs when the cell is placed in

- A. isotonic solution
- B. hypotonic solution
- C. Hypertonic solution
- D. none of the above .

Answer: C



Watch Video Solution

173. Apoplast is the system of adjacent cell walls that is continuous throughout the plant except at the

- A. Plasmodesmata
- B. Casparian strips of the endodermis
- C. Tracheids
- D. Vessel elements

Answer: B



Watch Video Solution

174. Transport of food material in higher plants takes place through

- A. Companion cells
- B. Transfusion tissue
- C. Tracheids
- D. Sieve elements

Answer: D



Watch Video Solution

175. The cause of the opening or closing of the stomata mainly depends on change in the turgidity of

- A. Microfibrils
- B. Guard cells
- C. Epidermal cells
- D. Xylem

Answer: B



Watch Video Solution

176. Function of companion cells is

- A. Providing energy to sieve elements for active transport
- B. Providing water to phloem
- C. Loading of sucrose into sieve elements by passive transport
- D. Loading of sucrose into sieve elements

Answer: D



Watch Video Solution

177. Guttation is the result of

- A. Diffusion
- B. transpiration
- C. Osmosis
- D. Root pressure

Answer: D



Watch Video Solution

178. When a cell is plasmolysed, it becomes

A. flaccid and its TP becomes 0

B. turgid and its TP becomes 0

C. turgid and TP becomes equal to OP

D. flaccid and DPD becomes 0

Answer: A



Watch Video Solution

179. Which one of the following is correctly matched ?

A. Apoplast-Plasmodesmata

B. Potassium - Readily immobilisation

C. Bakane of rice seedlings - F. Skoog

D. none of the above .

Answer: D



Watch Video Solution

180. Stomata open at night and close during the day time in

A. mesophytes

B. hydrophytes

C. succulents

D. shrubs

Answer: C



Watch Video Solution

181. Guttation takes place through

- A. cuticle
- B. stomata
- C. lenticels
- D. hydathodes

Answer: D



Watch Video Solution

182. Guttation differs from transpiration in

- A. It occurs in liquid form
- B. It occurs in vapour form
- C. It occurs during day time
- D. It is controlled by stomata

Answer: A



Watch Video Solution

183. Which of the following criteria does not pertain to facilitated transport

A. Transport saturation

B. Uphill transport

C. Requirement of special membrane proteins

D. High selectivity

Answer: B



Watch Video Solution

184. Osmotic expansion of a cell kept in water is chiefly regulated by

- A. Ribosomes
- B. Mitochondria
- C. Vacuoles
- D. Plastids

Answer: C



Watch Video Solution

185. In a ring girdled plant :

- A. the root dies first
- B. the shoot and root die together
- C. neither root nor shoot will die
- D. the shoot dies first

Answer: A



Watch Video Solution

186. Transpiration and root pressure cause water to rise in plants by

- A. pulling and pushing it respectively
- B. pushing it upward
- C. pushing and pulling it, respectively
- D. pulling it upward

Answer: A



Watch Video Solution

187. Root pressure develops due to

- A. active absorption
- B. low osmotic potential in soil
- C. passive absorption
- D. increase in transpiration

Answer: A



Watch Video Solution

188. A column of water within xylem vessels of tall trees does not break under its weight because of

- A. dissolved sugars in water
- B. tensile strength of water
- C. lignification of xylem vessels
- D. positive root pressure

Answer: B



Watch Video Solution

189. Water vapour comes out from the plant leaf through the stomatal opening. Through the same stomatal opening carbon dioxide diffuses into the plant during photosynthesis. Reason out the above statements using the following options.

A. (a) Both processes can happen together because the diffusion coefficient of water and CO_2 is different

B. (b) The above processes happen only during night time.

C. (c) One process occurs during day time, and the other at night .

D. (d) Both processes cannot happen simultaneously

Answer: A



Watch Video Solution

190. A few drops of sap were collected by cutting across a plant stem by a suitable method. The sap was tested chemically. Which one of the following test results indicates that it is phloem sap ?

A. (a) Acidic

B. (b) Alkaline

C. (c) Low refractive index

D. (d) Absence of sugar

Answer: B



Watch Video Solution

191. The water potential of pure water is

A. zero

B. less than zero

C. more than zero but less than one

D. more than one

Answer: A



Watch Video Solution

192. Which of the following facilitates opening of stomatal aperture ?

A. Contraction of outer wall of guard cells

B. Decreases in turgidity of guard cells

C. Radial orientation of cellulose

microfibrils in the cell wall of guard cells

D. Longitudinal orientation of cellulose

microfibrils in the cell wall of guard cells

Answer: C



Watch Video Solution