



BIOLOGY

BOOKS - JMD BIOLOGY (PUNJABI ENGLISH)

Environmental Issues

Exercise

1. Biochemical oxygen demand measures

A. Air pollution

B. Industrial pollution

C. Pollution capacity of effluents

D. Dissolved oxygen needed by microbes to
decompose wastes

Answer: D



Watch Video Solution

2. Which of the following statements does not apply to eutrophication?

A. It is the natural ageing of a lake by nutrient enrichment of its water

B. In a young lake the water is cold and clear and supports less life

C. The nutrients such as sulphur and phosphorus encourage the growth of aquatic organisms in the lake

D. Pollutants released by man radically
accelerate the ageing process of a lake

Answer: B



Watch Video Solution

3. Major aerosol pollution in jet plane
emission is

A. Sulphur dioxide

B. Carbon monoxide

C. Methane

D. Fluorocarbons

Answer: B



Watch Video Solution

4. Terrestrial life would become impossible with

A. Change in orbit of earth

- B. Change in atmosphere permitting all solar radiations to reach lithosphere
- C. Disappearance of moon
- D. Decrease in mean annual temperature by 10°C .

Answer: D



Watch Video Solution

5. Disease aggravated by environmental pollution is

A. Scurvy

B. Rheumatism

C. Haemophilia

D. Bronchitis

Answer: D



Watch Video Solution

6. Atmosphere of cities and metropolitan cities is polluted most by

A. Automobile exhausts

B. Pesticide residue

C. Household waste

D. Radioactive fall out

Answer: A



Watch Video Solution

7. Chief air pollutant which is likely to deplete ozone layer is

A. Sulphur dioxide

B. Carbon dioxide

C. Carbon monoxide

D. Nitrogen oxides and fluorocarbons

Answer: B



Watch Video Solution

8. Which one is not a pollutant normally?

A. Hydrocarbons

B. Carbon dioxide

C. Carbon monoxide

D. Sulphur dioxide

Answer: A



Watch Video Solution

9. Gas released during Bhopal gas tragedy (1984) was

- A. Methyl isocyanate
- B. Potassium isothiocyanate
- C. Sodium isothiocyanate
- D. Ethyl isothiocyanate

Answer: A



Watch Video Solution

10. Minamata disease is due to pollution of

A. Organic waste into drinking water

B. Oil spill in portable water

C. Industrial waste mercury or methyl
mercury fishing water

D. Arsenic into the atmosphere

Answer: C



Watch Video Solution

11. Cyclone collector is used for minimising

A. Radioactive pollution of environment

B. Air pollution of environment

C. Noise pollution of environment

D. Water pollution of environment

Answer: B



Watch Video Solution

12. Ultra-violet light causes

A. Formation of pyrimidines

B. Sticky metaphases

C. Photodynamic action

D. Destruction of hydrogen bonds between
complementary DNA strands

Answer: C



Watch Video Solution

13. Addition of phosphates and nitrates rich fertilisers into water leads to

- A. Increased growth of decomposers
- B. Reduced algal growth
- C. Increased algal growth
- D. Nutrient enrichment, i.e. eutrophication

Answer: D



Watch Video Solution

14. Air pollution is maximum due to

A. Sewage and pesticides

B. Sewage and effluents

C. Detergents and pesticides

D. Automobile exhausts and chemicals
from industries

Answer: D



Watch Video Solution

15. Air pollutant photochemical oxidants include

A. Nitrous oxide, Nitric acid and Nitric oxide

B. Oxygen, Chlorine and Nitric acid

C. Ozone, PAN and aldehydes

D. Carbon monoxide and Sulphur dioxide

Answer: C



Watch Video Solution

16. Ecological balance of a mining area is restored through

A. Conversion into agricultural area

B. Revegetation of area

C. Prevention of soil erosion

D. Protection against grazing

Answer: B



Watch Video Solution

17. Nonionizing radiations with specific biological effects are

A. UV radiations

B. Beta rays

C. Gamma rays

D. X-rays

Answer: A



Watch Video Solution

18. Domestic waste constitutes

A. Nonbiodegradable pollution

B. biodegradable pollution

C. Effluents

D. Air pollution

Answer: B



Watch Video Solution

19. Ozone layer of upper atmosphere is being destroyed by

A. Chlorofluorocarbon

B. SO_2

C. Photochemical oxidants/ O_2 and CO_2

D. Smog

Answer: A



Watch Video Solution

20. Ozone depletion in stratosphere shall result in

A. Forest fires

B. Increased incidence of skin cancer

C. Global warming

D. None of these

Answer: B



Watch Video Solution

21. Ultra-violet radiation from sunlight causes a reaction that produces

- A. Fluorides
- B. Carbon monoxide
- C. Sulphur dioxide
- D. Ozone

Answer: D



Watch Video Solution

22. Effects of today's radioactive fallout will be more on future children than children living today due to

A. Infant susceptibility to radiations

B. Increase of susceptibility to radiations with age

C. Mutated genes are usually recessive

D. Radiations have delayed effect

Answer: C



Watch Video Solution

23. Gas being produced by paddy fields and involved in global warming is

A. Chlorine

B. Methane

C. CO_2

D. H_2S

Answer: B



Watch Video Solution

24. Greenhouse effect causes warming due to

A. Infra-red rays reaching earth

B. Moisture layer in atmosphere

C. Increase in temperature due to increase
in carbon dioxide concentration of
atmosphere

D. Ozone layer of atmosphere

Answer: C



Watch Video Solution

25. Greenhouse gases include

A. CO_2 , CFC , CH_4 and N_2O

B. CO_2 , N_2 , O_2 , NO_2 and NH_3

C. CH_4 , N_2 , CO_2 and NH_3

D. CFC , CO_2 , NH_3 and N_2

Answer: A



Watch Video Solution

26. Fill in the blanks

___ are a major cause for atmospheric pollution at least in the metro cities.



[Watch Video Solution](#)

27. Fill in the blanks

___ burns most efficiently unlike petrol or diesel.



[Watch Video Solution](#)

28. Fill in the blanks

____ % impurities make domestic sewage unfit for human use.



[Watch Video Solution](#)

29. Fill in the blanks

Presence of large amount of nutrients in water causes ____ bloom.



[Watch Video Solution](#)

30. Fill in the blanks

Eutrophication is the natural ___ of a lake by biological enrichment of water.



[Watch Video Solution](#)

31. Fill in the blanks

Solid wastes refer to everything that goes out in ___.



[Watch Video Solution](#)

32. Fill in the blanks

___ are substitute for open burning dumps.



[Watch Video Solution](#)

33. Fill in the blanks

Chernobyl incident is an example of ___
leakage.



[Watch Video Solution](#)

34. Fill in the blanks

National Forest Policy was enacted in ____.



Watch Video Solution

35. Fill in the blanks

El Nino effect is ____ climatic changes.



Watch Video Solution

36. True and False Type Question

Amrita Devi was associated with the control of noise pollution.



[Watch Video Solution](#)

37. True and False Type Questions

Chipko movement was started in the year 1984.



[Watch Video Solution](#)

38. True and False Type Question

Water logging usually leads to soil erosion.



[Watch Video Solution](#)

39. True and False Type Questions

Thickness of ozone hole is measured by db.



[Watch Video Solution](#)

40. True and False Type Questions

At present average temperature of the earth is
15degc



[Watch Video Solution](#)

41. True and False Type Questions

Polyblend and bitumen are used to lay roads.



[Watch Video Solution](#)

42. True and False Type Questions

Hg and DDT undergo biomagnifications in the food chain.



[Watch Video Solution](#)

43. True and False Type Questions

Noise is undesired high level of sound.



[Watch Video Solution](#)

44. True and False Type Questions

Ramesh Chanddagar helps in forest conservation in India.



[Watch Video Solution](#)

45. True and False Type Questions

Ahmed Khan is famous for organic farming in India.



[Watch Video Solution](#)

46. What are Dobson units ?



Watch Video Solution

47. Expand CNG and BOD.



Watch Video Solution

48. Which disease is associated with eating food contaminated with cadmium ?



Watch Video Solution

49. What is chemical oxygen demand (COD) ?



Watch Video Solution

50. Write a note on Biological Oxygen Demand (BOD).



Watch Video Solution

51. Name the disease associated with accumulation of nitrates in human body.



[Watch Video Solution](#)

52. Name the disease caused due to consumption of mercury contaminated fishes in Japan.



[Watch Video Solution](#)

53. What do you understand by pollution ?



Watch Video Solution

54. Explain : Radioactive waste



Watch Video Solution

55. Discuss the role of women and communities in protection and conservation of forests.



[Watch Video Solution](#)

56. Why do pollen grains of some flowers trigger sneezing in some people?



[Watch Video Solution](#)

57. Sugarcane is propagated by

A. a. stem cutting

B. b. leaf buds

C. c. root cutting

D. d. seeds

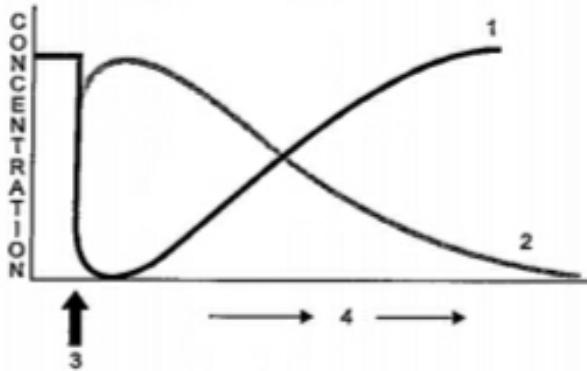
Answer: C



Watch Video Solution

58. Consider the parts labelled in 1, 2, 3 and 4 respectively in the following diagram and find

out the correct sequences



A. 1-COD, 2- BOD,3-Sewage discharge, 4-

Direction of flow

B. 1-BOD,2-Dissolved oxygen, 3- Sewage

discharge, 4- Direction of flow

C. 1-Dissolved oxygen, 2- BOD, 3- fresh water

discharge, 4- Direction of flow

D. 1-Dissolved oxygen, 2-BOD, 3-Sewage discharge, 4- Direction of flow

Answer: D



Watch Video Solution

59. Offspring formed by sexual reproduction exhibit more variation than those formed by asexual reproduction because

A. a. sexual reproduction is a lengthy process

B. b. gametes of parents have qualitatively different genetic composition

C. c. genetic material comes from parents of two different species

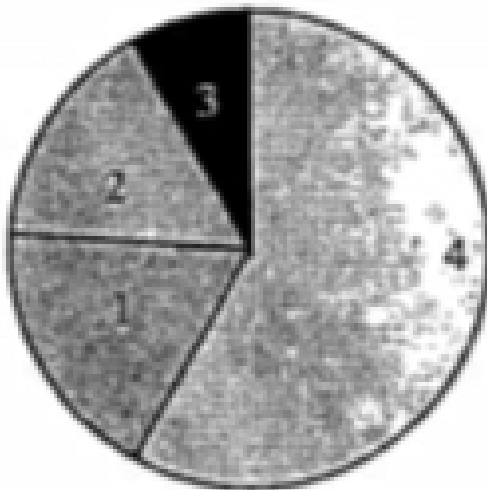
D. d. greater amount of DNA is involved in sexual reproduction.

Answer: C



Watch Video Solution

60. Which one of the following options correctly designate the per cent contribution of gases 1,2, 3 and 4 responsible of global warming ?



A. 1- CH_4 (20%),2-CFC_s(14%),3- N_2O (6%), 4-
 CO_2 (60%)

B. 1-CFC_s(20%),2- CO_2 (14%),3- N_2O (6%), 4-
 CH_4 (60%)

C. 1- N_2O (20%),2- CH_4 (14%),3-CFC_s(6%), 4-
 CO_2 (60%)

D. 1- CH_4 (20%),2- N_2O (14%),3-CFC_s(6%), 4-
 CO_2 (60%)

Answer: D



Watch Video Solution

