



BIOLOGY

BOOKS - JMD BIOLOGY (PUNJABI ENGLISH)

Human Health and Disease

Exercise

1. An immune disease in which body destroys the thyroid gland is

A. Hashimoto disease

B. Simmond's disease

C. Cretinism

D. Myxoedema

Answer: A



Watch Video Solution

2. Memory cells are

A. Cells responsible for immunologic memory

B. Antigens producing cells

C. Cells responsible for memory in brain

D. Cells of Cerebrum for balance

Answer: A



Watch Video Solution

3. What are vaccines ?

A. Curative medicines

B. Monoclonal antibodies

C. Treated bacteria or viruses or their
proteins

D. MHC-proteins

Answer: C



Watch Video Solution

4. Vaccination protects a person from disease because it

- A. Helps in better digestion
- B. Increases RBC count
- C. Stimulates production of antibodies
- D. Improves healing system

Answer: C



Watch Video Solution

5. Oto-rhino-laryneology is the study of

A. ENT

B. Bird's anatomy

C. Locomotory system

D. Brain cells

Answer: A



Watch Video Solution

6. Inflammatory response in allergy is caused by

A. Histamines

B. Antigens

C. Prothrombin

D. Antibodies

Answer: A



Watch Video Solution

7. The type of immunoglobulin present in the colostrum secreted by the mammary gland is

A. Ig A

B. Ig G

C. Ig D

D. Ig E

Answer: A



Watch Video Solution

8. Gamma-immunoglobulins are synthesized inside

A. Liver

B. Bone marrow

C. Kidney

D. Lymphoid tissue

Answer: D



Watch Video Solution

9. The type of immunoglobulin whose function is possible antigen recognition by B-cells may be

A. Ig A

B. Ig D

C. Ig E

D. Ig G

Answer: B



Watch Video Solution

10. Which of the following is correctly matched and is a sexually transmitted disease?

A. AIDS-bacterium

B. Syphilis-Treponema pallidum

C. Gonorrhoea-Mycobacterium

D. All of these

Answer: B



Watch Video Solution

11. Which of the following organisms is found in the lymph nodes?

A. Plasmodium

B. Wuchereria

C. Taenia

D. Diplococcus

Answer: B



Watch Video Solution

12. Malignant malaria is caused by

A. P.vivax

B. P.ovale

C. P.falciparum

D. P.malariae

Answer: C



Watch Video Solution

13. The disease pneumonia is caused by

A. Virus

B. Bacterium

C. Cyanobacterium

D. Protozoan

Answer: B



Watch Video Solution

14. Common intestinal bacterium of human is

A. Escherichia coli

B. Salmonella typhi

C. Entamoeba coli

D. Clostridium tetani

Answer: A



Watch Video Solution

15. Which of the following is a set of bacterial diseases?

A. Cholera, typhoid and mumps

B. Malaria,mumps and poliomyelitis

C. Tetanus,TB and Measles

D. Diphtheria,leprosy and plague

Answer: D



Watch Video Solution

16. A drunk person has ill effects the earliest on which part of the brain?

A. Cerebellum

B. Cerebrum

C. Pons Varoli

D. Medulla

Answer: B



Watch Video Solution

17. Excessive consumption of ethanol damages

A. Liver

B. Kidneys

C. Lungs

D. Heart

Answer: A



Watch Video Solution

18. Stimulant Cocaine is obtained from

A. *Thea sinesis*

B. *Papaver somniferum*

C. *Erythroxylon coca*

D. *Coffea arabica*

Answer: C



Watch Video Solution

19. Which type of cancer affects lymph nodes and spleen?

A. Carcinoma

B. Sarcoma

C. Leukaemia

D. Lymphoma

Answer: D



Watch Video Solution

20. The factor responsible for cirrhosis is

A. Alcoholism

B. Sugars

C. Fats and Oils

D. Vitamins

Answer: A



Watch Video Solution

21. Which of the following is cancerous state of blood?

A. Uraemia

B. Proteinemia

C. Leukaemia

D. Polycythaemia

Answer: C



Watch Video Solution

22. Heroin is obtained from the plant of

A. Poppy

B. Tobacco

C. Datura

D. Cannabis

Answer: A



Watch Video Solution

23. Radiation is a health hazard because it causes

A. Haemophilia

B. Leukaemia

C. Pneumonia

D. Leucopenia

Answer: B



24. The cells in the human body invaded by HIV are

- A. B-cells
- B. Macrophages
- C. Erythrocytes
- D. Helper T-cells

Answer: B



25. Which is a cancer-causing virus?

A. Myxovirus

B. Rubeolla virus

C. SV - 40

D. All of these

Answer: C



Watch Video Solution

26. Fill In The Blanks

Balanced diet, personal hygiene and regular ...
are very important to maintain good health.



[Watch Video Solution](#)

27. Fill in the blanks

Sporozoites are stored in the glands of
female Anopheles.



[Watch Video Solution](#)

28. Fill in the blanks

E. histolytica is a protozoan parasite in the intestine of human.



Watch Video Solution

29. Fill in the blanks

Filarial worm cause a slowly developing inflammation of the organs.



Watch Video Solution

30. Fill in the blanks

..... in stomach, in the mouth, from eyes
all prevent microbial growth.



[Watch Video Solution](#)

31. Fill in the blanks

The T-cells themselves do not secrete



[Watch Video Solution](#)

32. Fill in the blanks

The yellowish fluid is secreted by mother during initial days of lactation.



[Watch Video Solution](#)

33. Fill in the blanks

Allergy is due to the release of chemicals like and from the mast cells.



[Watch Video Solution](#)

34. Fill in the blanks

Cannabinoids are obtained from the of Cannabis sativa.



[Watch Video Solution](#)

35. True and False Type Questions

Higher doses of__ leading to greater intake and addiction.



[Watch Video Solution](#)

36. True and False Type Questions

Balanced diet, personal hygiene and regular exercise are very important to maintain good health.



[Watch Video Solution](#)

37. True and False Type Questions

Sporozoites are stored in the salivary glands of female Anopheles.



[Watch Video Solution](#)

38. True and False Type Questions

E. histolytica is a protozoan parasite in the large intestine of human.



[Watch Video Solution](#)

39. True and False Type Questions

Filarial worm cause a slowly developing chronic inflammation of the organs.



[Watch Video Solution](#)

40. True and False Type Questions

acid in stomach, saliva in the mouth, tears from eyes all prevent microbial growth.



[Watch Video Solution](#)

41. True and False Type Questions

The T-cells themselves do not secrete antibodies..



[Watch Video Solution](#)

42. Fill in the blanks

The yellowish fluid is secreted by mother during initial days of lactation.



[Watch Video Solution](#)

43. Fill in the blanks

Allergy is due to the release of chemicals like and from the mast cells.



[Watch Video Solution](#)

44. Fill in the blanks

Cannabinoids are obtained from the of Cannabis sativa.



[Watch Video Solution](#)

45. True and False Type Questions

Higher doses of__ leading to greater intake and addiction.



[Watch Video Solution](#)

46. List two plants with hallucinogenic properties.



Watch Video Solution

47. Which two types of lymphocytes are involved in immunity ?



Watch Video Solution

48. Name the primary and secondary lymphoid organs?



[Watch Video Solution](#)

49. Differentiate between Innate and Acquired Immunity and give examples of each.



[Watch Video Solution](#)

50. Proliferative phase of menstrual cycle is also called

A. a. follicular phase

B. b. luteal phase

C. c. secretory phase

D. d. ovulatory phase

Answer:



Watch Video Solution

51. Why are antigens called antibodies generating chemicals ?



Watch Video Solution

52. Differentiate between Active and Passive Immunity and give examples of each.



Watch Video Solution

53. Name a lymphoid organ which is reservoir of erythrocytes.



Watch Video Solution

54. What is the source of drug LSD?



Watch Video Solution

55. After the release of the secondary oocyte, the Graafian follicle develops into

A. a. corpus callosam

B. b.corpus albicans

C. c. corpus luteum

D. d.primary follicle

Answer:



Watch Video Solution

56. Briefly give an account of various hypothesis to explain how a normal cell changes into a cancer cell.



Watch Video Solution

57. What are hallucinogens? Name two hallucinogens. Write their sources.



Watch Video Solution

58. Which of the following glands is large sized at birth but reduces in sizes with aging ?

A. a. pineal

B. b. pituitary

C. c. thymus

D. d. thyroid

Answer:



Watch Video Solution

59. The substance produced by a cell on viral infection that can protect other cells from further infection is

- A. a. serotonin
- B. b. colostrum
- C. c. interferon
- D. d. histamine

Answer:



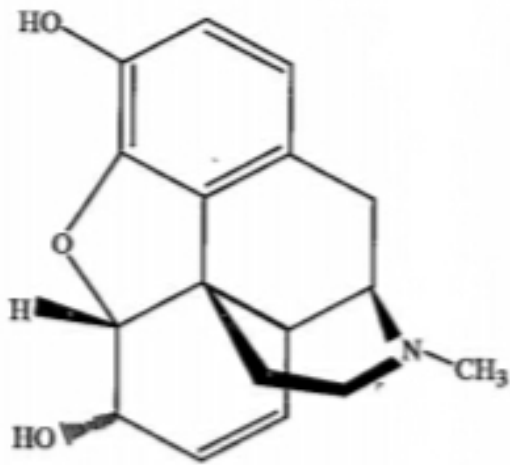
Watch Video Solution

60. α -interferon activates the immune system and help to destroy the tumor cells.this statement is truer or false?



Watch Video Solution

61. Identify the given molecule. Explain its resource and use.



Watch Video Solution