



BIOLOGY

BOOKS - JMD BIOLOGY (PUNJABI ENGLISH)

Human Reproduction

Exercise

1. Capacitation refers to changes in the

A. Sperm before fertilization

B. ovum before fertilization

C. ovum after fertilization

D. sperm after fertilization

Answer: A



Watch Video Solution

2. Which of these is not an important component of initiation of parturition in humans?

A. Increase in estrogen and progesteron
ratio

B. Synthesis of prostaglandins

C. Release of oxytocin

D. Release of prolactin

Answer: A



Watch Video Solution

3. Which of the following viruses is not transferred through semen of an infected male?

A. Hepatitis B virus

B. Human immunodeficiency Virus

C. Chikungunya virus

D. Ebola virus

Answer: D



Watch Video Solution

4. Which of the following cells during gametogenesis is normally diploid?

A. Primary polar body

B. Spermatid

C. Spermatogonia

D. Secondary polar body

Answer: A



Watch Video Solution

5. Hysterectomy is surgical removal of

A. Uterus

B. Prostate gland

C. Vas deference

D. Mammary glands

Answer: A



Watch Video Solution

6. In human females, meiosis *II* is not completed until?

A. Uterine implantation

B. Birth

C. Puberty

D. Fertilization

Answer: D



Watch Video Solution

7. Which of the following layers in an antral follicle is acellular?

A. Stroma

B. Zona pellucida

C. Granulosa

D. Theca interna

Answer: B



Watch Video Solution

8. Which of the following events is not associated with ovulation in human female?

A. Release of secondary oocyte

B. LH surge

C. Decrease in estradiol

D. Full development of Graafian follicle

Answer: C



Watch Video Solution

9. Ectopic pregnancies are referred to as

A. Implantation of defective embryo in the
uterus

B. Pregnancies terminated due to
hormonal imbalance

C. Pregnancies with genetic abnormality

D. Implantation of embryo at site other
than uterus

Answer: D



Watch Video Solution

10. Which of the following statements is correct regarding menstrual cycle?

A. LH induces rupturing of Graafian follicle

B. Proliferative phase is characterised by increased production of progesterone

C. Corpus luteum secretes large amount of estrogen

D. Both LH and FSH attain a peak level in secretory phase

Answer: A



Watch Video Solution

11. Fertilization in humans is practically feasible only if

A. a, The ovum and sperms are transported simultaneously to a. ampullary-isthmic

junction of the fallopian tube

B. b. The ovum and sperms are transported simultaneously to ampullary-isthmic junction of the cervix

C. c. The sperms are transported into cervix within 48 hours of release of ovum in uterus

D. d. The sperms are transported into vagina just after the release of ovum in fallopian tube

Answer: A



Watch Video Solution

12. Changes in GnRH pulse in frequency in females is controlled by circulating levels of

- A. Estrogen and inhibin
- B. Progesterone only
- C. Progesterone and inhibin
- D. Estrogen and progesterone

Answer: D



Watch Video Solution

13. Identify the correct statement on inhibin

A. Is produced by granulose cells in ovary

and inhibits the secretion of FSH

B. Is produced by granulose cells in ovary

and inhibits the secretion of LH

C. Is produced by nurse cells in testes and inhibits the secretion of LH

D. Inhibits the secretion of LH,FSH and prolactin

Answer: A



Watch Video Solution

14. State the incorrect statement

A. LH triggers ovulation in ovary

B. LH and FSH decrease gradually during the follicular phase

C. LH triggers secretion of androgens from the Leydig cells

D. FSH stimulates the steroli cells which help in spermiogenesis

Answer: B



Watch Video Solution

15. Embryo with more than 16 blastomeres formed due to in vitro fertilization is transferred into

A. Fimbriae

B. Cervix

C. Uterus

D. Fallopian tube

Answer: C



Watch Video Solution

16. Which of the following depicts the correct pathway of transport of sperms?

A. Rete testis rarr Vas deferens rarr

Efferent ductules rarr Epididymis

B. Efferent ductules rarr Rete testis rarr Vas

deferens rarr Epididymis

C. Rete testis rarr Efferent ductules rarr

Epididymis rarr Vas deferens

D. Rete testis rarr Epididymis rarr Efferent ductules rarr Vas deferens

Answer: C



Watch Video Solution

17. Match Column *I* with Column *II* and select the correct option using the codes given

below: (a) *monspubis*(column I), (i)

Embryo or *mation*(column II

), (b) *Antrum*(column I), (ii) *sperm*(column II

), (c) *Trophec* → *derm*(column I

), (iii) *Fema* ≤ *external* ≥ *nitilia*(column

II), (d) *Neben kern* (column I), *Graafian follicle*

(column II)

A. (a) – (iii), (b) – (i), (c) – (iv),

(d) – (ii)

B. (a) – (i), (b) – (iv), (c) – (iii),

(d) – (ii)

C. (a) – (iii), (b) – (iv), (c) – (ii),

(d) – (i)

D. (a) – (iii), (b) – (iv), (c) – (i),

(d) – (ii)

Answer: D



View Text Solution

18. Several hormones like hCG, hPL, estrogen and progesterone is produced by

A. Fallopian tube

B. Pituitary

C. Ovary

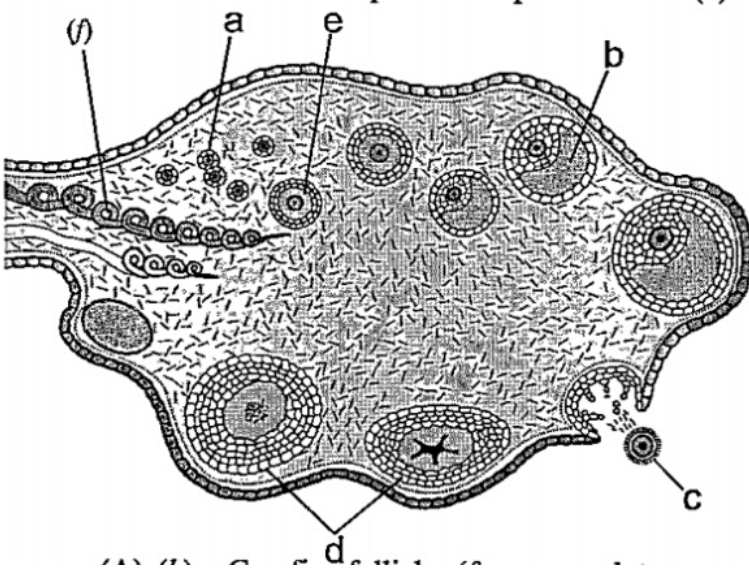
D. Placenta

Answer: D



Watch Video Solution

19. Choose the correct option from parts labelled (*a*) -



A. (b) - Graafian follicle, (f) - Corpus luteum

B. (c) - Graafian follicle , (a) - Ovum

C. (b) - Primary follicle, (c) - Tertiary follicle

showing antrum

D. (e) - Corpus callosum, (d) - Antrum cavity

Answer: C



Watch Video Solution

20. Which of the following statements is correct regarding menstrual cycle?

- A. LH induces rupturing of Graafian follicle
- B. Proliferative phase is characterised by increased production of progesterone

C. Corpus luteum secretes large amount of
estrogen

D. Both LH and FSH attain a peak level in
secretory phase

Answer: A



Watch Video Solution

21. GnRH, a hypothalamic hormone, needed in
reproduction, acts on

- A. Posterior pituitary gland and stimulates secretion of LH and relaxin
- B. Anterior pituitary gland and stimulates secretion of LH and oxytocin
- C. Anterior pituitary gland and stimulates secretion of LH and FSH
- D. Posterior pituitary gland and stimulates secretion of oxytocin and FSH

Answer: C



Watch Video Solution

22. Anaphase Promoting Complex (APC) is a protein degradation machinery necessary for proper mitosis of animal cells. If APC is defective in a human cell, which of the following is expected to occur?

A. Recombination of chromosome arms will occur

B. Chromosomes will not condense

C. Chromosomes will be fragmented

D. Chromosomes will not segregate

Answer: D



Watch Video Solution

23. Capacitation occurs in

A. Female Reproductive Tract

B. Rete testis

C. Epididymis

D. Vas deferens

Answer: A



Watch Video Solution

24. A temporary endocrine gland in the human body is

- A. Corpus allatum
- B. Pineal gland
- C. Corpus cardiacum
- D. Corpus luteum

Answer: D



Watch Video Solution

25. The amnion of mammalian embryo is derived from

- A. Endoderm and mesoderm
- B. Mesoderm and trophoblast
- C. Ectoderm and mesoderm
- D. Ectoderm and endoderm

Answer: C



Watch Video Solution

26. Fill in the blanks

The period of development before hatching or birth is called__



Watch Video Solution

27. Give the term used for the period between Fertilization and Birth of a Young One.



[Watch Video Solution](#)

28. Fill in the blanks

Placenta helps in nutrition and __



[Watch Video Solution](#)

29. Coin the term for fusion of male and female gametes?



[Watch Video Solution](#)

30. Fill in the blanks

__ Is the sexual intercourse between male and female sexes.



[Watch Video Solution](#)

31. Fill in the blanks

__ Is the process by which the sperm prepares itself to fertilise the ovum.



[Watch Video Solution](#)

32. Fill in the blanks

Parturition is controlled by__ and__ hormones.



[Watch Video Solution](#)

33. Fill in the blanks

During oogenesis, an oogonium produces__
ovum.



[Watch Video Solution](#)

34. Fill in the blanks

Cessation of menstrual cycle in a female is called__



Watch Video Solution

35. Fill in the blanks

Progesterone is secreted by__



Watch Video Solution

36. True and False Type Questions

The sperm lysin secreted by acrosome of sperm is hyaluronic acid.



[Watch Video Solution](#)

37. True and False Type Questions

Post-natal period of development occurs after hatching or birth while pre-natal period of development occurs before hatching or birth.



[Watch Video Solution](#)

38. True and False Type Questions

Process of giving birth to a young one is called parturition.



[Watch Video Solution](#)

39. True and False Type Questions

Fertilization in human being occurs in part of fallopian tube.



[Watch Video Solution](#)

40. True and False Type Questions

The expulsion of completely developed foetus from the uterus is called gestation.



[Watch Video Solution](#)

41. True and False Type Questions

Testes are primary sex organs of male while ovaries and breasts are the primary sex organs of female.



[Watch Video Solution](#)

42. True and False Type Questions

Failure of testes to descend into scrotal sacs produces sterility.



[Watch Video Solution](#)

43. True and False Type Questions

Sexual reproduction always involves the fusion of gametes of male and female parents.



[Watch Video Solution](#)

44. True and False Type Questions

The process of reproduction is essential for the maintenance of the species and not for the survival of the organisms.



[Watch Video Solution](#)

45. True and False Type Questions

Gonads are controlled by sex hormones while the reproductive ducts are controlled by the hormones from the pituitary gland.





[Watch Video Solution](#)

46. Give a schematic view of spermatogenesis in human.



[Watch Video Solution](#)

47. What are leydig's cells? Write their function.



[Watch Video Solution](#)

48. Compare mature mammalian sperm and ovum.



Watch Video Solution

49. Draw a well labelled diagram of structure of Human ovum.



Watch Video Solution

50. On which day does the ovulation occur in human female ?



[Watch Video Solution](#)

51. Write any two differences between morula and blastula.



[Watch Video Solution](#)

52. In our society women are often blamed for giving birth to daughters. Can you explain why this is not correct ?



[Watch Video Solution](#)

53. Supply the scientific term for the following

:Release of ovum from ovary.



Watch Video Solution

54. Supply the scientific term for the following

:Onset of menstrual cycle in female.



Watch Video Solution

55. Supply the scientific term for the following:
The structures that pickup ova from body cavity.



Watch Video Solution

56. What is fertilization?



Watch Video Solution

57. What is fertilization ? In which part of Human female reproductive system does it occurs ? Explain diagrammatically various physical and chemical events of fertilization in humans.



Watch Video Solution

58. Write the specific location and the functions of the following cells in human males:Leydig cells





[Watch Video Solution](#)

59. Write the specific location and the functions of the following cells in human males: Sertoli cells



[Watch Video Solution](#)

60. Write the specific location and the functions of the following cells in human males: Primary spermatocyte



[Watch Video Solution](#)

61. Explain the role of any two accessory glands in human male reproductive system.



Watch Video Solution

62. Give a schematic representation of oogenesis in human. Mention the number of chromosomes at each stage correlate the life phases of the individual with the stages of the process.



[Watch Video Solution](#)

63. Draw a labelled diagram for structure of sperm.



[Watch Video Solution](#)

64. The process of maturation of spermatid into spermatozoa is called .

.. Whereas the process of release of mature spermatozoa tubules is called ..



[Watch Video Solution](#)

65. What do you mean by menstrual cycle ?

Briefly explain its four phases.



Watch Video Solution

66. Name the term used for first occurrence of menstruation.

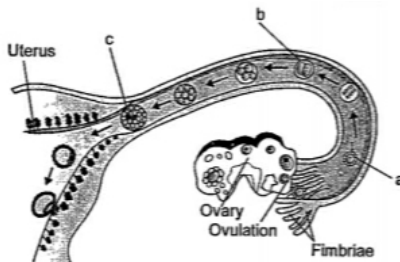


Watch Video Solution

67. Describe in detail the three phases of menstrual cycle in human female.

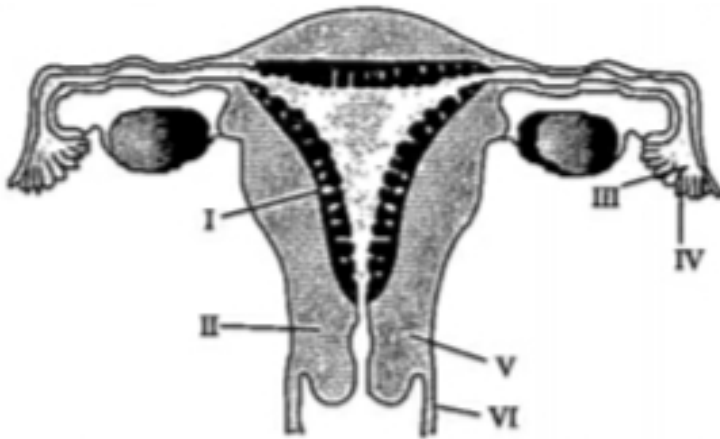
 [Watch Video Solution](#)

68. What is the nature of b in above figure?



 [Watch Video Solution](#)

69. The figure given here depicts a diagrammatic sectional view of the female reproductive system of humans. What role is played by label IV?



[Watch Video Solution](#)

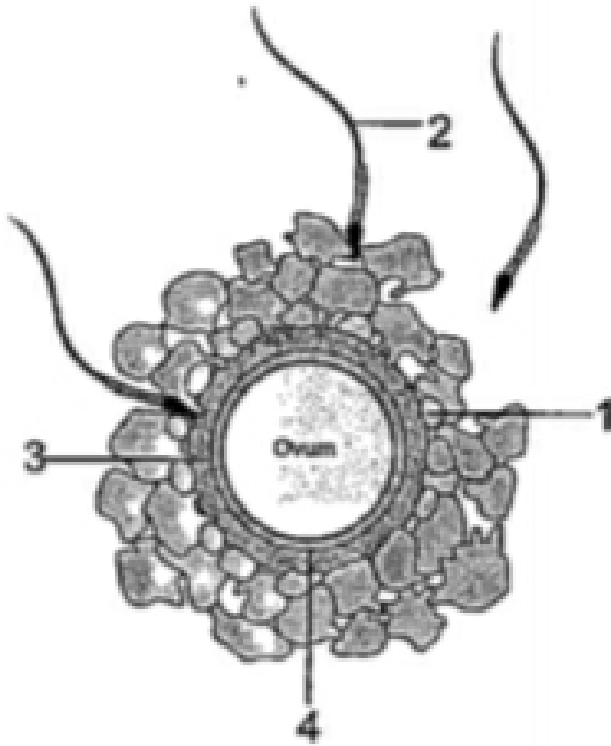
70. What is implantation ?



[Watch Video Solution](#)

71. Consider the parts labelled in 1, 2, 3 and 4 respectively in the following diagrammatic structure of Ovum surrounded by sperms: Mention the nature of Label 3 of the

ngure.



.....



[Watch Video Solution](#)

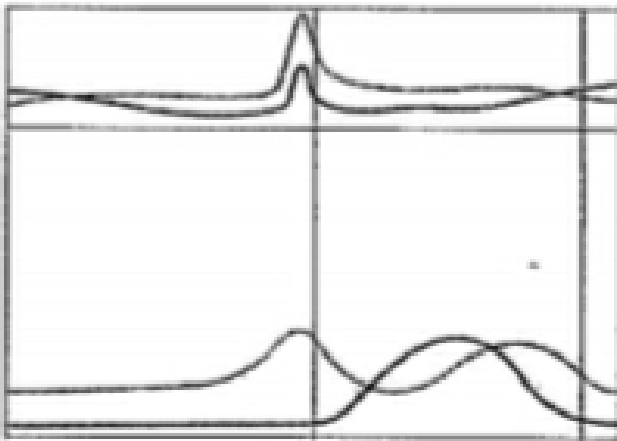
72. What is corpus luteum ?





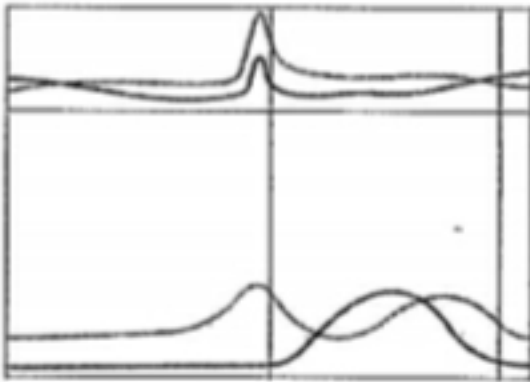
Watch Video Solution

73. The events of the menstrual cycle in Homo sapiens are represented below. Answer the following questions. In which phase of menstrual cycle does the egg travel to the fallopian tube or oviduct



Watch Video Solution

74. The events of the menstrual cycle in Homo sapiens are represented below. Answer the following questions. Why is there no menstruation cycle upon fertilization ?



[Watch Video Solution](#)

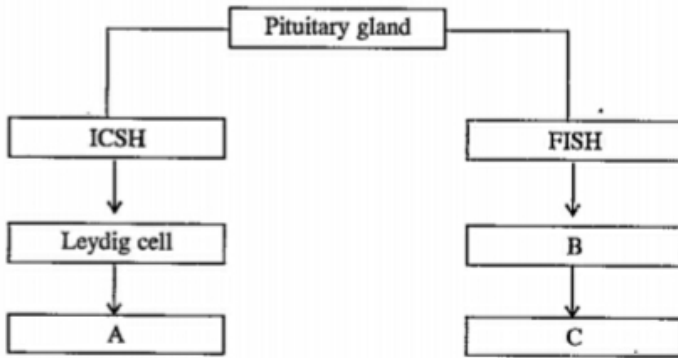
75. What is Dysmenorrhea ?



Watch Video Solution

76. Given below is an incomplete now chart showing influence of hormone on gametogenesis in male. Observe the fow chart carefully and fl in the blanks A, B and C.What

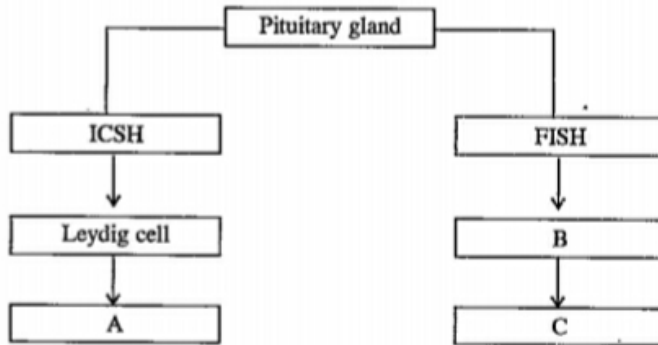
is the name of "B" cell and mention the role?



[Watch Video Solution](#)

77. Given below is an incomplete flow chart showing influence of hormone on gametogenesis in male. Observe the flow chart carefully and fill in the blanks A, B and C. What

process is does refer to ?



[Watch Video Solution](#)