



BIOLOGY

BOOKS - JMD BIOLOGY (PUNJABI ENGLISH)

Microbes in Human Welfare

Exercise

1. Which of the following is used in industrial preparation of ethanol?

A. Lactobacillus

B. Azotobacter

C. Penicillium

D. Saccharomyces

Answer: D



Watch Video Solution

2. Casein is a

A. Milk fat

B. Milk protein

C. Milk lipid

D. Milk sugar

Answer: B



Watch Video Solution

3. A distilled alcoholic beverage produced from fruit juice fermentation is

A. Vinegar

B. rum

C. beer

D. wine

Answer: D



Watch Video Solution

4. Toddy is prepared for

A. Fern

B. Apple

C. Cashewnut

D. Palm

Answer: D



Watch Video Solution

5. Penicillin, griseofulvin and cephalosporin are obtained from

A. One genera

B. Two genera

C. Three genera

D. Four genera

Answer: B



Watch Video Solution

6. Streptomycin is obtained from

A. *Streptomyces aureofaciens*

B. *Streptomyces venezuelae*

C. *Streptomyces griseus*

D. *Streptomyces ramosus*

Answer: C



Watch Video Solution

7. Enzyme tissue plasminogen activator (TPA) is used for

A. Maintaining turgor pressure

B. Dissolving blood clots

C. Stimulating thromboplastin production

D. Clearing turbidity of juices

Answer: B



Watch Video Solution

8. Pasteurised milk is

A. Sterile and never turn sour

B. free from pathogenic bacteria

C. free from all bacteria

D. all of these

Answer: B



Watch Video Solution

9. In cheese manufacture, the microorganisms are important for

A. souring from milk only

B. development of resistance to spoilage
only

C. ripening only

D. both souring and the ripening processes

Answer: D



Watch Video Solution

10. Some microorganisms live in our stomach and they play a very beneficial role in checking disease causing microbes these are

A. Fungi

B. Actinomycetes

C. Protozoans

D. Bacteria

Answer: D



Watch Video Solution

11. Curd enhances the amount of which of the following vitamin

A. vitamin B12

B. vitamin B

C. vitamin c

D. vitamin D

Answer: B



Watch Video Solution

12. *Saccharomyces cerevisiae* is not involved in production of

A. ethanol

B. fermentation of malted cereals

C. penicillin

D. fermentation of fruit juice

Answer: C



Watch Video Solution

13. Butyric acid is produced by

A. *Aspergillus niger*

B. *Acetobacter aceti*

C. *Lactobacillus lacti*

D. none of these

Answer: D



Watch Video Solution

14. "Clot buster" is used for removing clots from blood vessels of patients who have undergone myocardial infraction leading to heart attack it is obtained from

A. Bacteria

B. viroids

C. Slime mould

D. Yeast

Answer: A



Watch Video Solution

15. Statins are produced by

A. *Trichoderma polysporum*

B. *Monascus purpureus*

C. Streptococcus

D. Clostridium

Answer: B



Watch Video Solution

16. To obtain maximum useful energy which can be efficiently utilised from per kg of cow dung

A. It must be burnt directly

B. Biogas must be obtained from it

C. It must be converted to manure which
may be burnt

D. It must be burnt in semi decayed form

Answer: B



Watch Video Solution

17. Uprooting of weeds is a method of
controlling them by means.

A. Biological

B. Mechanical

C. Cultural

D. Chemical

Answer: B



Watch Video Solution

18. If BOD of sample water is a very high, the sample is

A. highly polluted

B. less polluted

C. not polluted

D. portable

Answer: A



Watch Video Solution

19. Compositated manure consists of

A. Cattle dung and crop residue

B. Cattle dung and animal waste

C. Residue of gobar gas plant

D. Rotten vegetables, crops residue and
animal refuse

Answer: D



Watch Video Solution

20. Glomus species of fungi are associated
with

A. nitrogen fixation

B. symbiotically associated with algae

C. symbiotically associated with roots of
higher plants

D. associated with biocontrol

Answer: C



Watch Video Solution

21. Which one is involved in biogas production?

A. Methanococcus

B. Halococcus

C. Thermoproteus

D. Thermoplasma

Answer: A



Watch Video Solution

22. One of the following is a very familiar beetle with red and black marking and is used to get rid of mosquitoes.

A. Lady bird

B. Dragonflies

C. Praying mantis

D. Grasshopper

Answer: A



Watch Video Solution

23. Which crop is being cultivated in some states of our country?

A. Bt cotton

B. Bt tobacco

C. Bt rice

D. Bt wheat

Answer: A



Watch Video Solution

24. Biofertilisers are organisms that enrich the nutrient quality of the soil. Which one is not a source of biofertilisers?

A. BGA

B. fungi

C. lichen

D. Bacteria

Answer: C



Watch Video Solution

25. Raising of crops for the production of ethanol is known as

A. Biomass production

B. agrotechnology

C. Energy cropping

D. Energy plantation

Answer: C



Watch Video Solution

26. Fill in the blanks

Many members of the genus _____ form mycorrhiza.



[Watch Video Solution](#)

27. Fill in the blanks

_____ and _____ are free living nitrogen fixing bacteria.



[Watch Video Solution](#)

28. Fill in the blanks

_____ is free living fungi.



Watch Video Solution

29. Fill in the blanks

Methanobacterium is commonly called
as _____.



Watch Video Solution

30. Fill in the blanks

_____ is produced by yeast *Monascus*.



Watch Video Solution

31. Fill in the blanks

_____ is caused by *Mycobacterium leprae*.



Watch Video Solution

32. Fill in the blanks

Milk is converted into curd by_____.



[Watch Video Solution](#)

33. Fill in the blanks

Swiss cheese is produced by_____.



[Watch Video Solution](#)

34. Fill in the blanks

_____commercially produces lactic acid.



Watch Video Solution

35. Fill in the blanks

_____has been commercialized as blood cholesterol lowering agents.



Watch Video Solution

36. True and False Type Questions

Large holes in Swiss cheese are due to CO_2 .



[Watch Video Solution](#)

37. True and False Type Questions

Traditional drink toddy is prepared from cashew nut.



[Watch Video Solution](#)

38. True and False Type Questions

DPT is used against the disease Kali khansi.



[Watch Video Solution](#)

39. True and False Type Questions

Citric acid is produced by *Aspergillus niger*.



[Watch Video Solution](#)

40. True and False Type Questions

Masses of bacteria is referred to as flocs.



[Watch Video Solution](#)

41. True and False Type Questions

Ladybird beetle is the predator of mosquitoes.



[Watch Video Solution](#)

42. True and False Type Questions

Nostoc has a power to fix phosphorus from the nature.



[Watch Video Solution](#)

43. True and False Type Questions

Wastewater has very low BOD.



[Watch Video Solution](#)

44. True and False Type Questions

Gal ghotu is a bacterial disease of human being.



[Watch Video Solution](#)

45. True and False Type Questions

Idli is fermented by yeast.



[Watch Video Solution](#)

46. What is Dough? Explain.



Watch Video Solution

47. What is the key difference between Primary and Secondary sewage treatment?



Watch Video Solution

48. Why are biofertilizers or biopesticides preferred over chemical fertilizers?



[Watch Video Solution](#)

49. What is sewage? In which way can this be harmful?



[Watch Video Solution](#)

50. What are Bioactive molecules? Give two examples.



[Watch Video Solution](#)

51. In which food would you find lactic acid bacteria? Mention some of their useful applications.



Watch Video Solution

52. What is a cyclosporin A and what is the importance?



Watch Video Solution

53. What is Baker's Yeast? Give its application.



Watch Video Solution

54. What are methanogens ? Give an example.



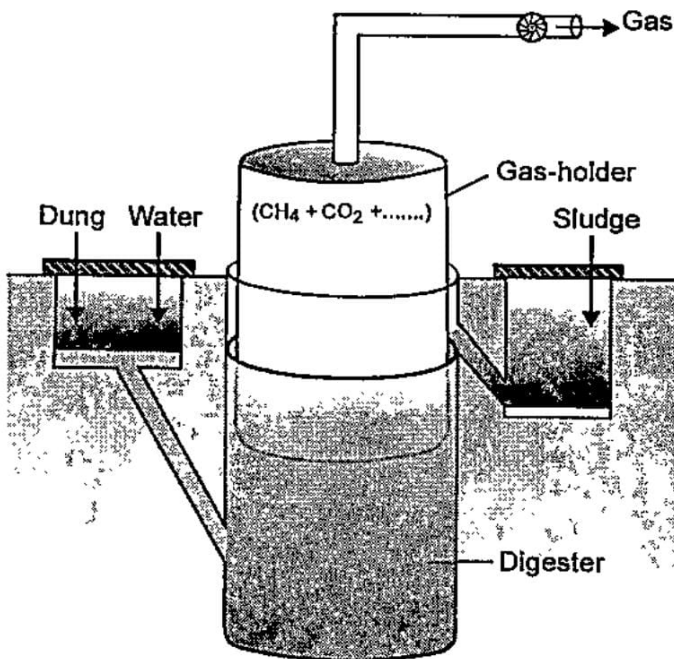
Watch Video Solution

55. Why are biofertilizers or biopesticides preferred over chemical fertilizers?



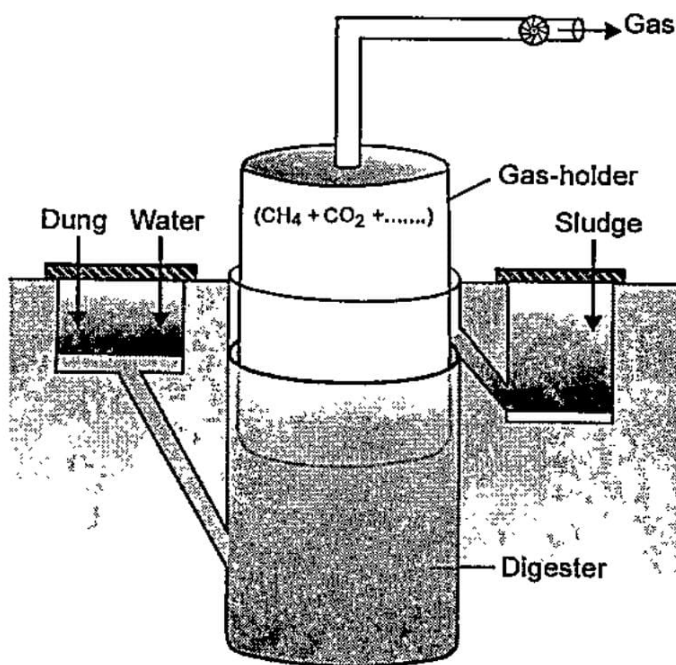
Watch Video Solution

56. With the reference to the below figure of biogas plant answer the following questions, Which institute in India has developed biogas technology ?



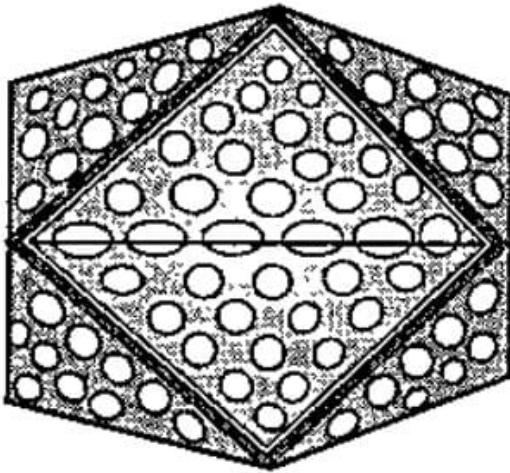
Watch Video Solution

57. With the reference to the below figure of biogas plant answer the following questions, Which type of bacteria are responsible for the production of biogas?



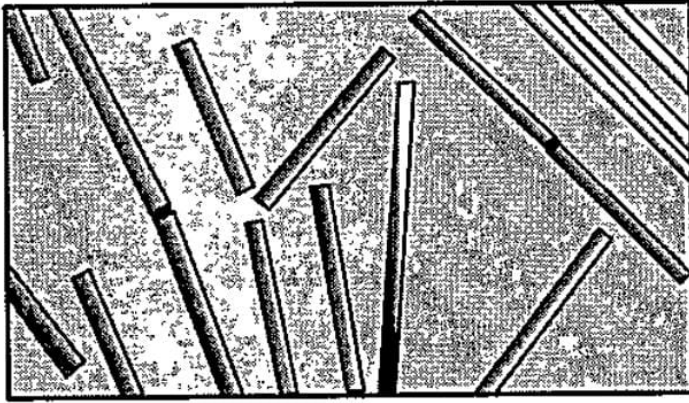
Watch Video Solution

58. Identify the given diagram of microbes and also explain its role.



Watch Video Solution

59. Identify the given diagram of microbes and mention its significance.



[Watch Video Solution](#)